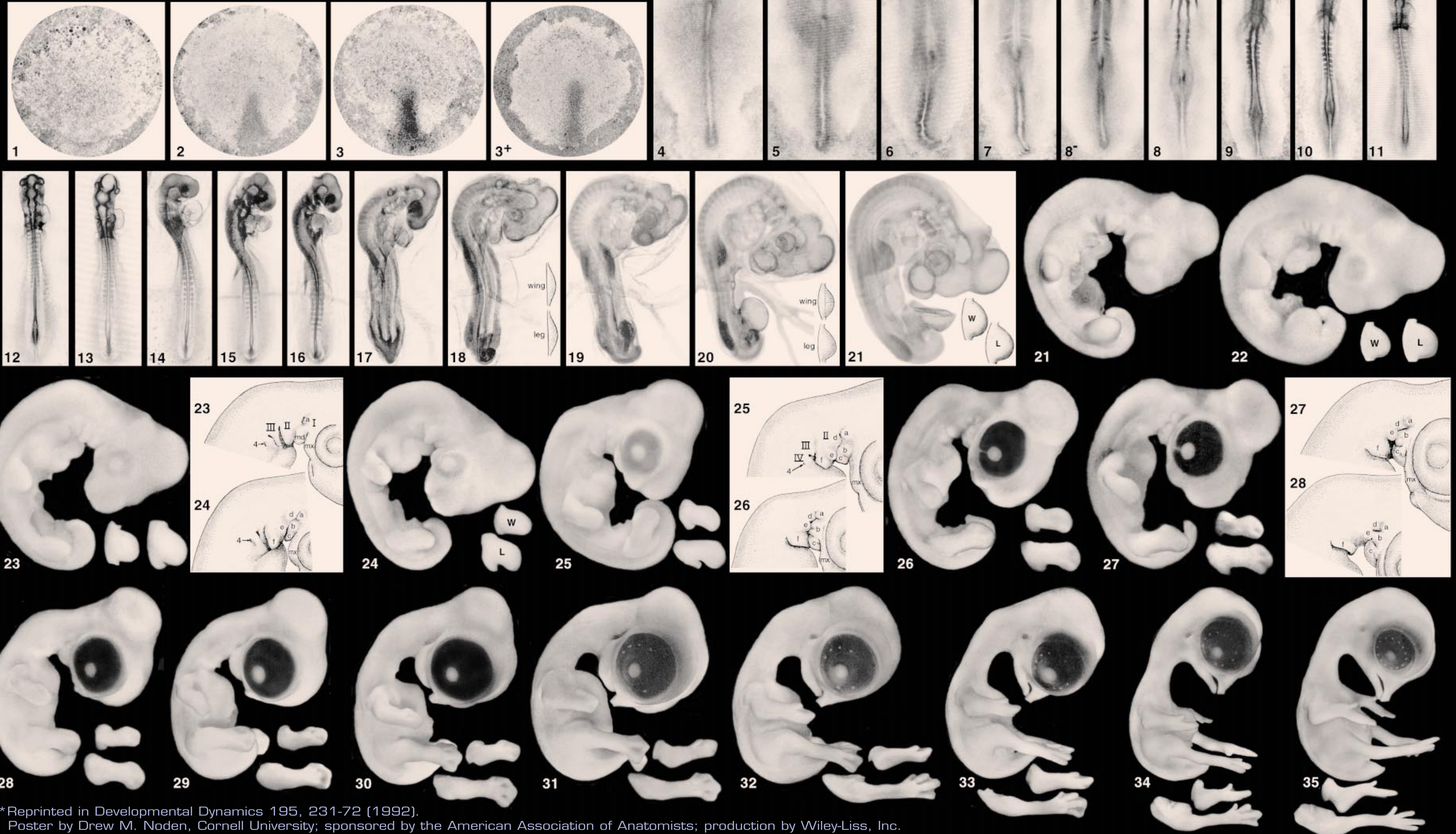


In Memory of Viktor Hamburger: 1900-2001

NORMAL STAGES OF CHICK EMBRYONIC DEVELOPMENT

Hamburger V. Hamilton H.L. 1951.

A series of normal stages in the development of the chick embryo. *J Morph* 88: 49-92.*



The stage series of normal chick embryonic development is one of the most frequently cited and enduring biomedical articles ever published, and set the standards for amniote species-specific stage series that have followed. The coauthor of this paper, Viktor Hamburger, died in June, 2001, just a few weeks prior to his 101st birthday. In recognition of the tremendous importance of this stage series to countless research and teaching laboratories around the world, and in tribute to Prof. Hamburger's many contributions to developmental biology spanning seven decades, the editors and publisher of *Developmental Dynamics* commissioned the poster that accompanies this issue. Stages 1-35 (incubation days 0 through 9) were scanned from the original 1951 publication. Embryos have been resized and cropped for this poster format, and digitally enhanced to better highlight key features of each stage. Sketches of early limb bud and branchial (pharyngeal) arch development are also included; keys for these are in the original publication.

*Reprinted in *Developmental Dynamics* 195, 231-72 (1992).

Poster by Drew M. Noden, Cornell University; sponsored by the American Association of Anatomists; production by Wiley-Liss, Inc.

Estágio HH	Horas	Dias	Somitos
1			
2			
3	12-13h	1	
4	18-19h	1	
5	19-22h	1	
6	23-25h	1	
7	23-26h	2	1
8	26-29h	2	4
9	29-33h	2	7
10	33-38h	2,5	10
11	40-45	2,5	13
12	45-49	2,5-3	16
13	48-52	2,5-3	19
14	50-53	2,5-3	22
15	50-55	2,5-3	
16	51-56	2,5-3	
17	52-64	2,5-3	
18	65-69	2,5-3	
19	68-72	2,5-3	
20	70-72	3	
21		3,5	
22		3,5	
23		3,5-4	
24		4	
25		4,5	
26		4,5-5	
27		5	
28		5,5	