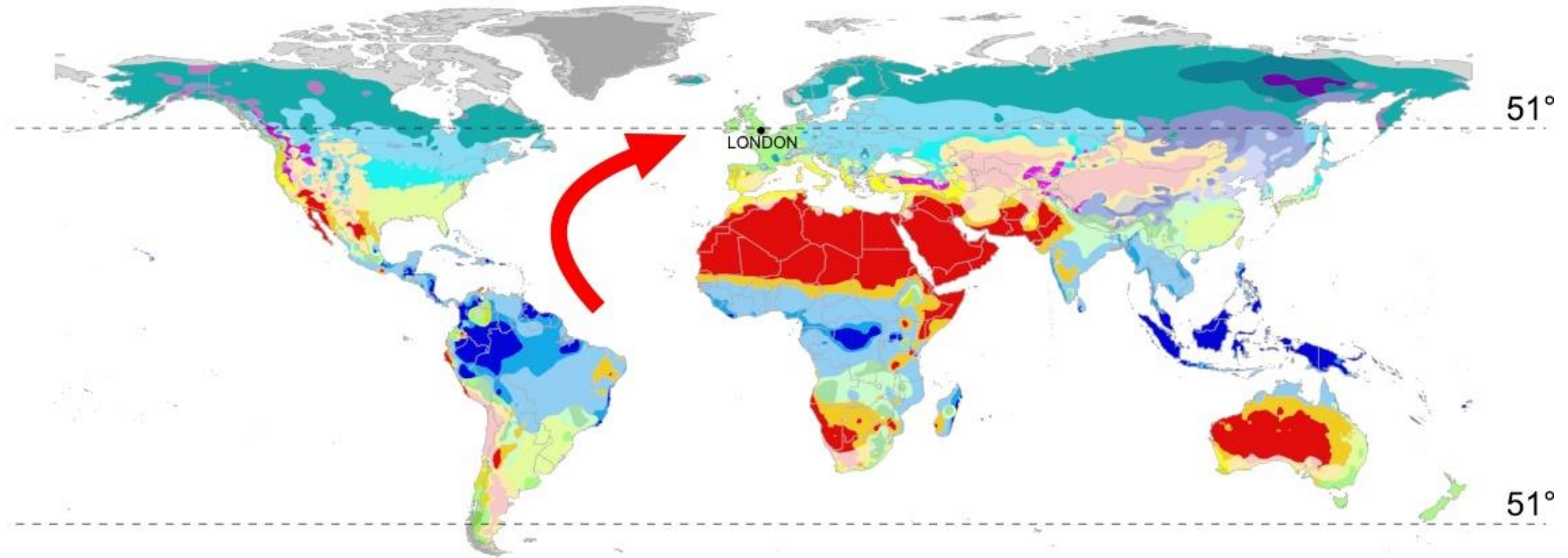


THE GULFSTREAM



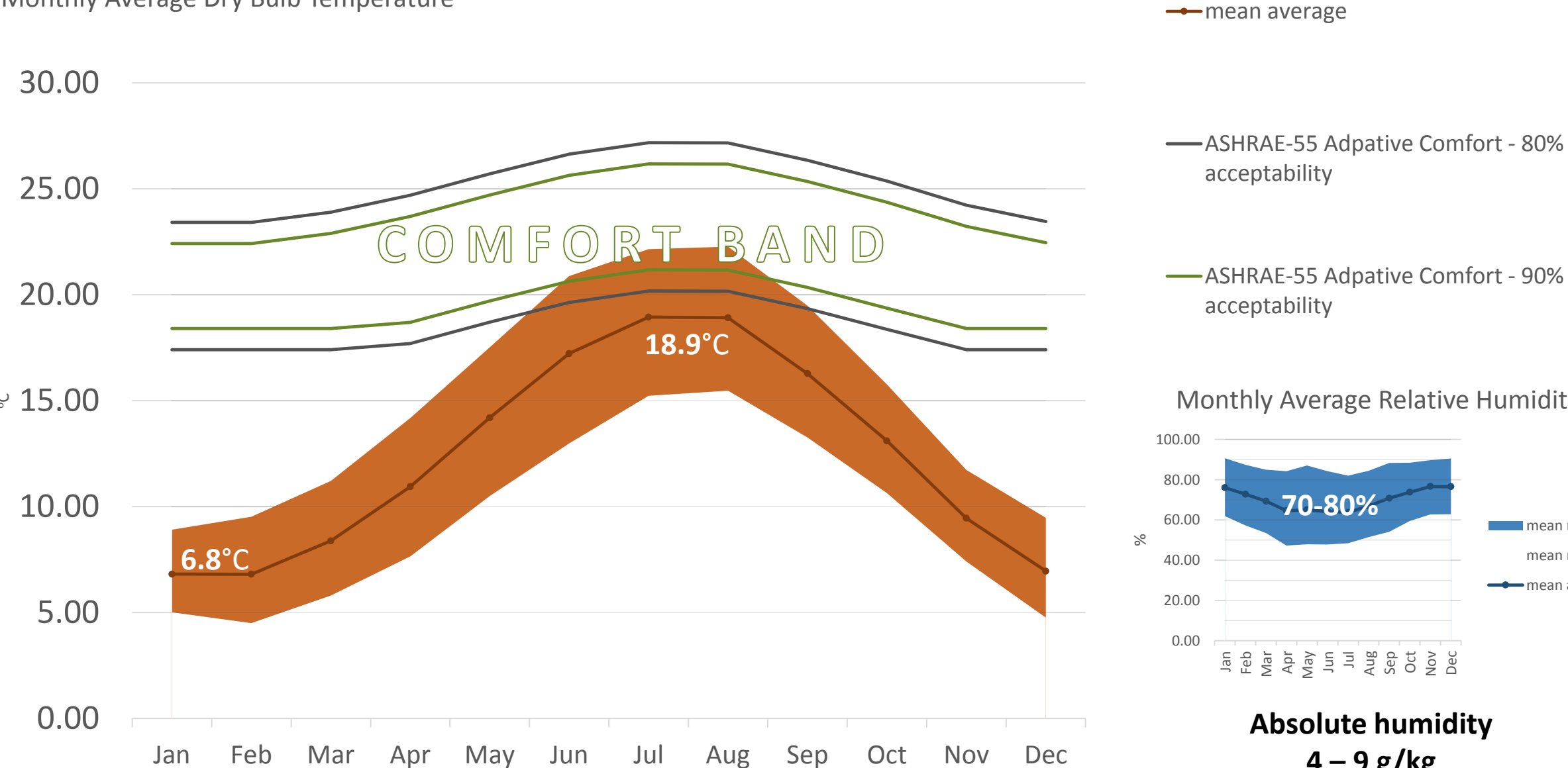
ENGLAND 51° North



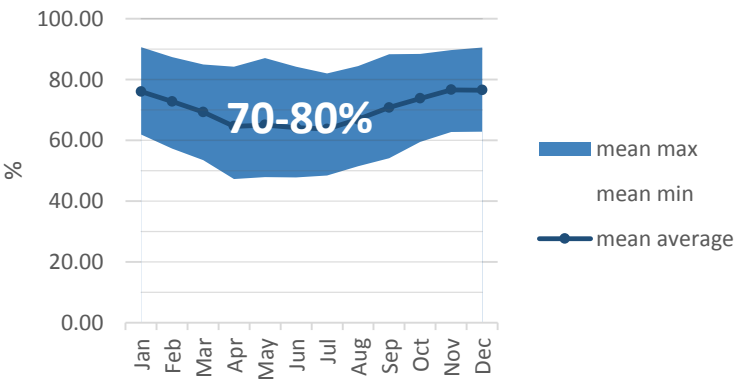
PATAGONIA 51° South

TYPICAL TEMPERATURES & HUMIDITY

Monthly Average Dry Bulb Temperature

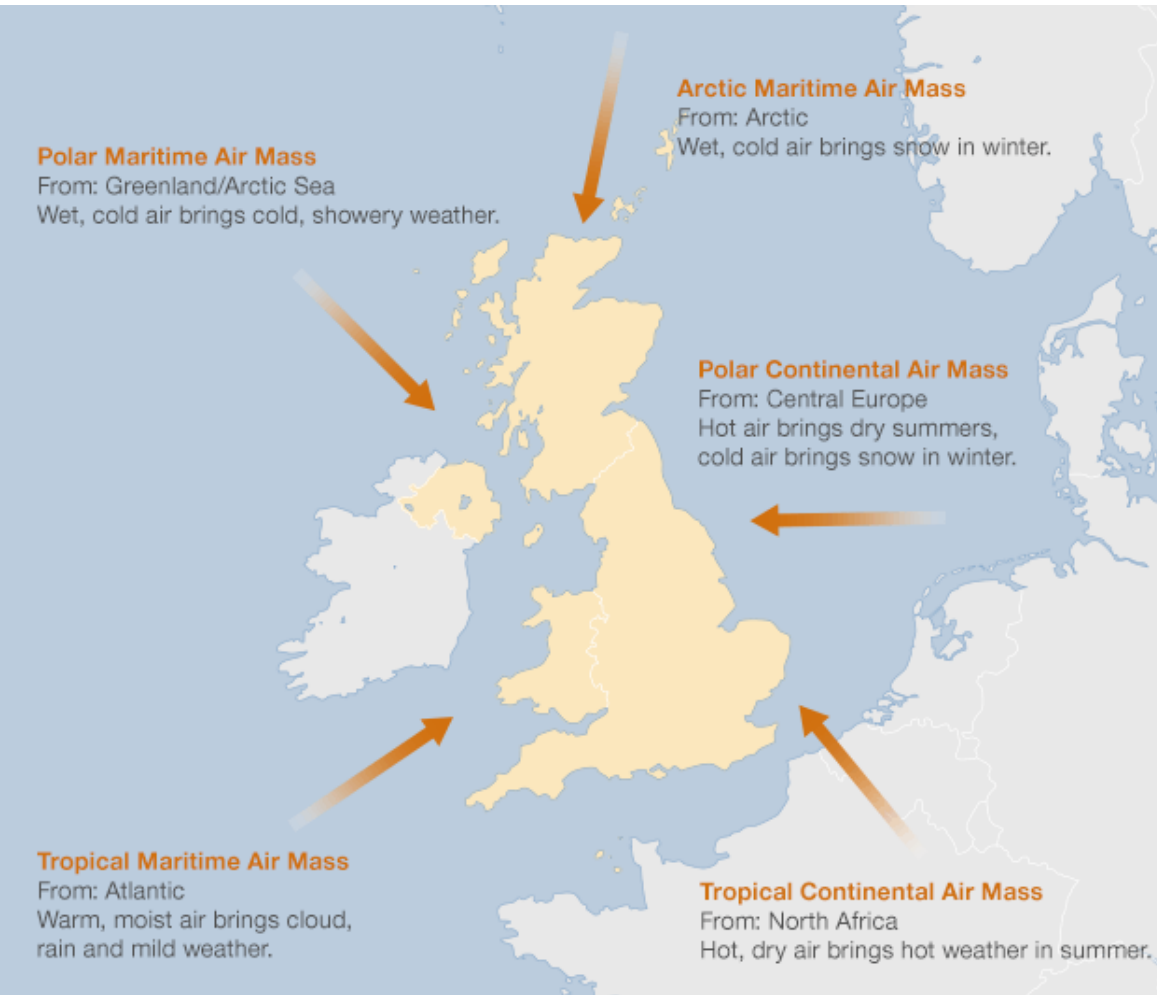


Monthly Average Relative Humidity

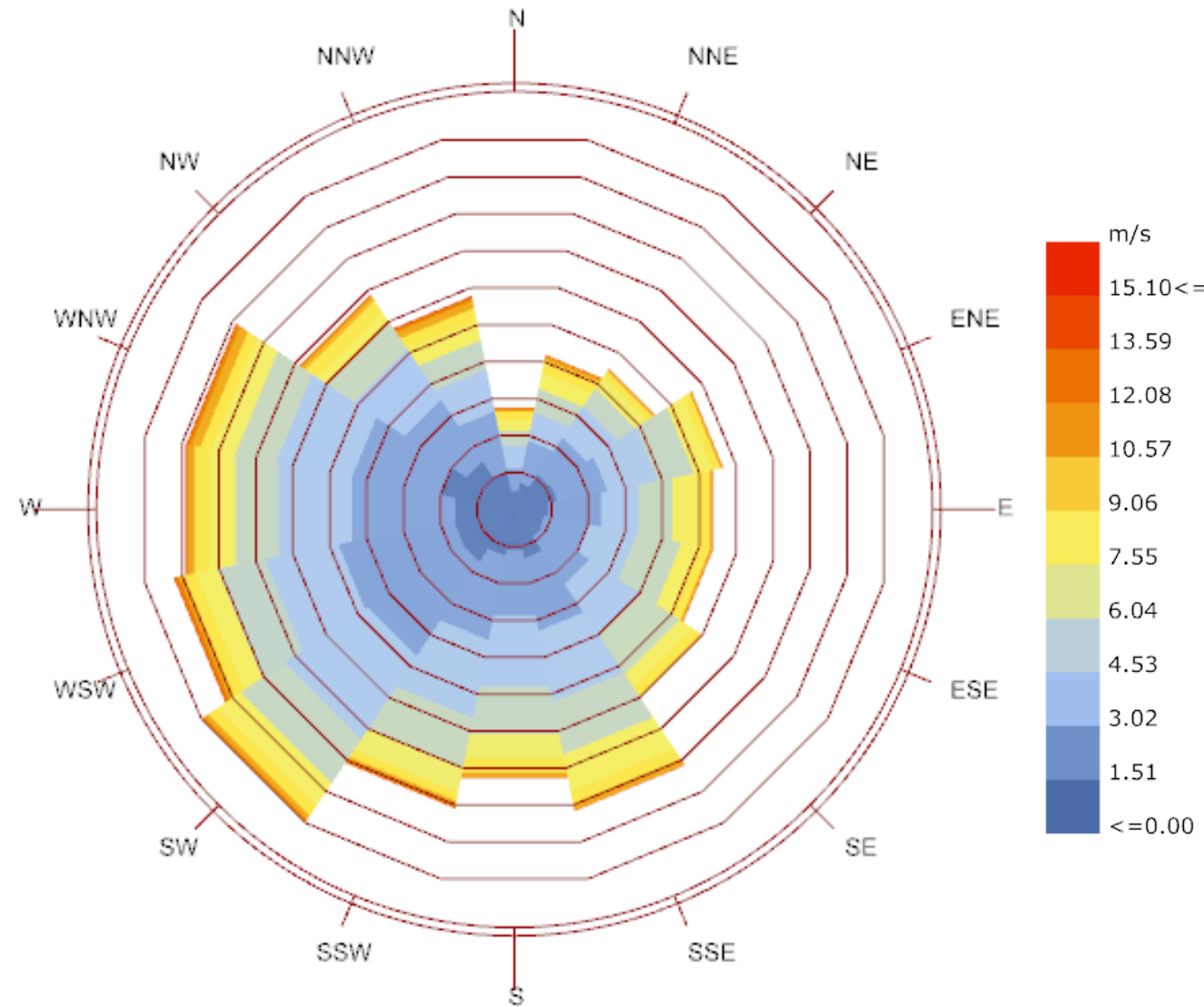


Absolute humidity
4 – 9 g/kg

WIND



ENGLAND IS AT A **JUNCTION OF 6 AIR MASSES**

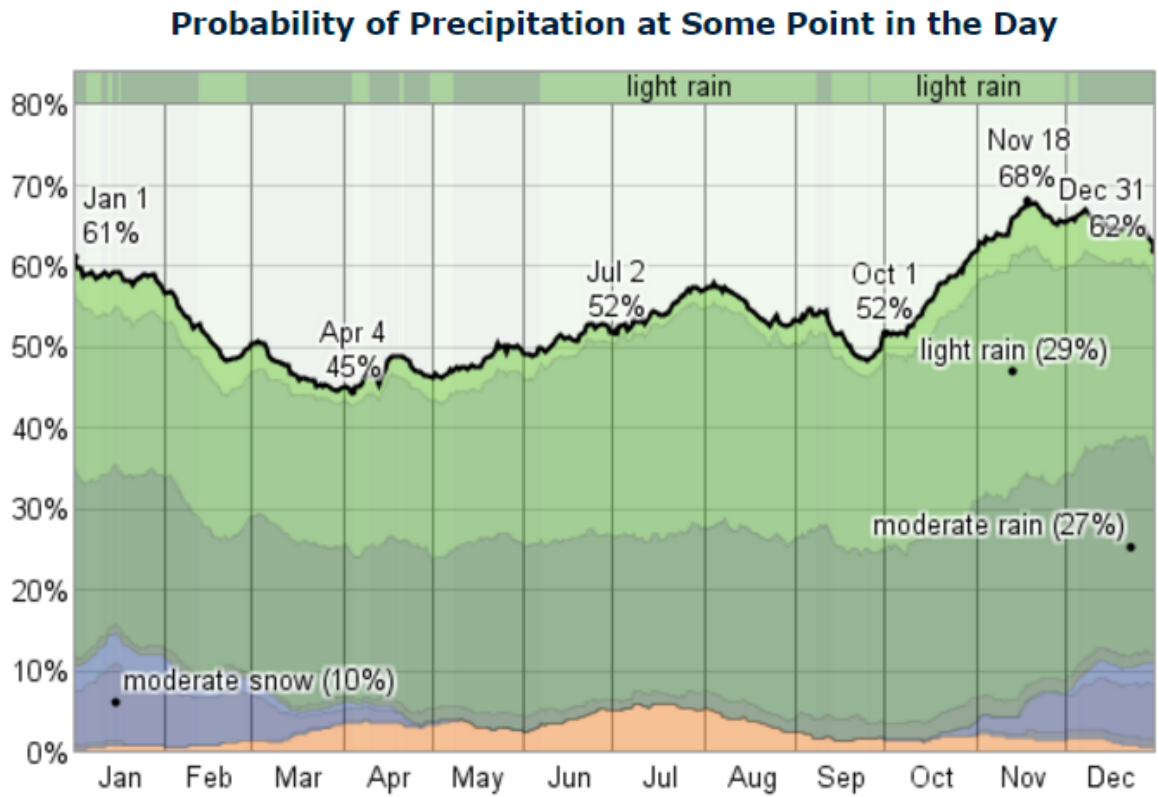


TYPICALLY:
W & SW DIRECTION
BETWEEN **2 – 5 m/s**

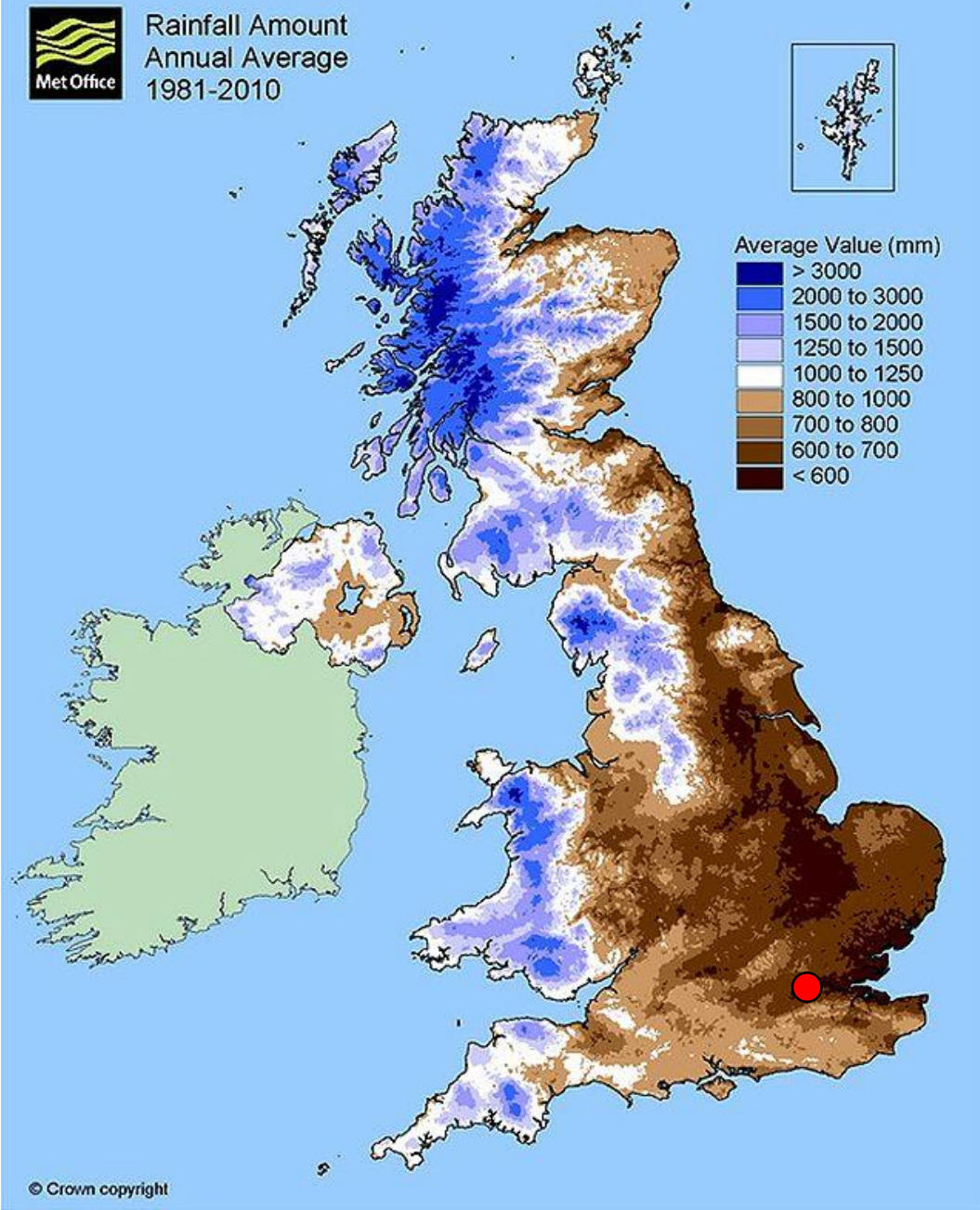
RAIN

Month	Jan	Feb	Mar	Apr	May	Jun	Jul	Aug	Sep	Oct	Nov	Dec	Year
Rainfall ≥ 1 mm days	13.2	10.4	11.5	10.4	9.9	9.6	9.5	9.9	9.9	12.6	13.1	12.7	132.8

IT RAINS ON 1/3 OF THE DAYS

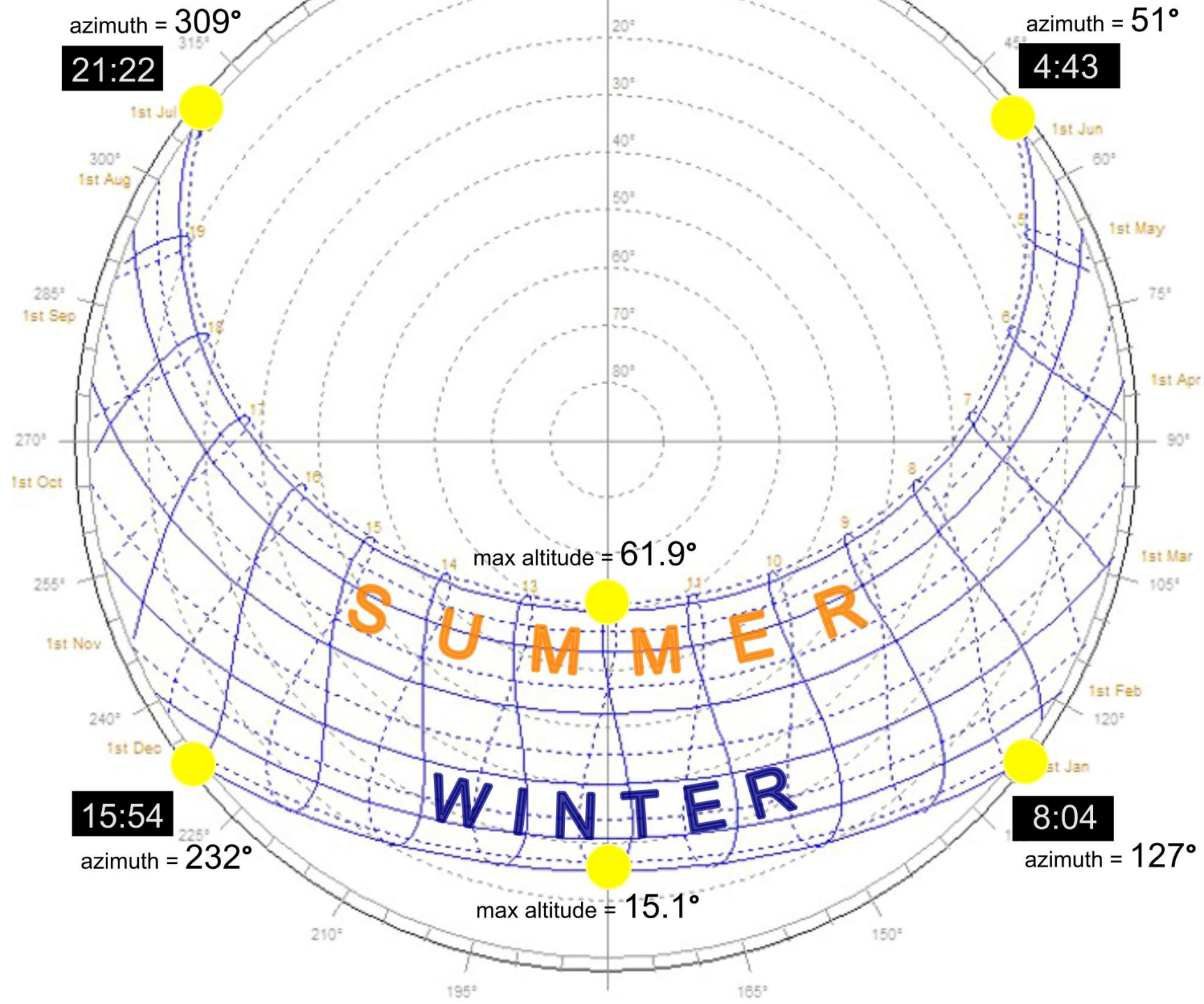


THE RAIN IS QUITE UNPERDICTABLE



LONDON RECIEVES LESS THAN 700mm OF RAIN

SOLAR PATH



OUTDOOR ILLUMINANCE & ENJOYMENT OF SUN

Month	Jan	Feb	Mar	Apr	May	Jun	Jul	Aug	Sep	Oct	Nov	Dec	Year
Mean monthly sunshine hours	59.8	79.9	118.2	173.3	205.3	203.6	218.4	211.1	146.4	117.2	70.6	49.6	1,653.4

SUNSHINE HOURS

	Jan	Feb	Mar	Apr	May	Jun	Jul	Aug	Sep	Oct	Nov	Dec	
1	0	0	0	0	0	0	0	0	0	0	0	0	1
2	0	0	0	0	0	0	0	0	0	0	0	0	2
3	0	0	0	0	0	0	0	0	0	0	0	0	3
4	0	0	0	0	0	0	0	0	0	0	0	0	4
5	0	0	0	0	1	3	1	0	0	0	0	0	5
6	0	0	0	1	8	11	9	4	0	0	0	0	6
7	0	0	0	9	19	21	19	14	6	0	0	0	7
8	0	1	8	19	31	31	30	25	15	7	1	0	8
9	1	7	16	29	41	43	40	36	24	15	6	1	9
10	6	13	24	36	51	53	50	46	35	21	11	5	10
11	11	18	30	43	56	56	57	52	41	25	15	10	11
12	13	20	33	48	54	54	53	54	41	27	17	11	12
13	13	21	35	50	54	54	55	54	40	27	16	11	13
14	14	23	33	46	50	52	52	50	41	29	16	11	14
15	10	18	27	38	47	46	46	45	35	23	11	7	15
16	4	10	19	30	39	37	40	37	24	13	4	1	16
17	0	4	11	20	28	29	31	27	14	4	0	0	17
18	0	0	3	10	17	19	20	15	4	0	0	0	18
19	0	0	0	2	7	10	10	6	0	0	0	0	19
20	0	0	0	0	1	3	2	0	0	0	0	0	20
21	0	0	0	0	0	0	0	0	0	0	0	0	21
22	0	0	0	0	0	0	0	0	0	0	0	0	22
23	0	0	0	0	0	0	0	0	0	0	0	0	23
24	0	0	0	0	0	0	0	0	0	0	0	0	24
	Jan	Feb	Mar	Apr	May	Jun	Jul	Aug	Sep	Oct	Nov	Dec	

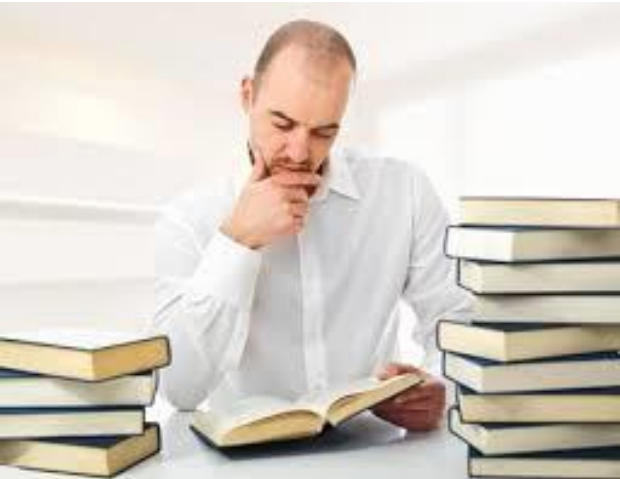
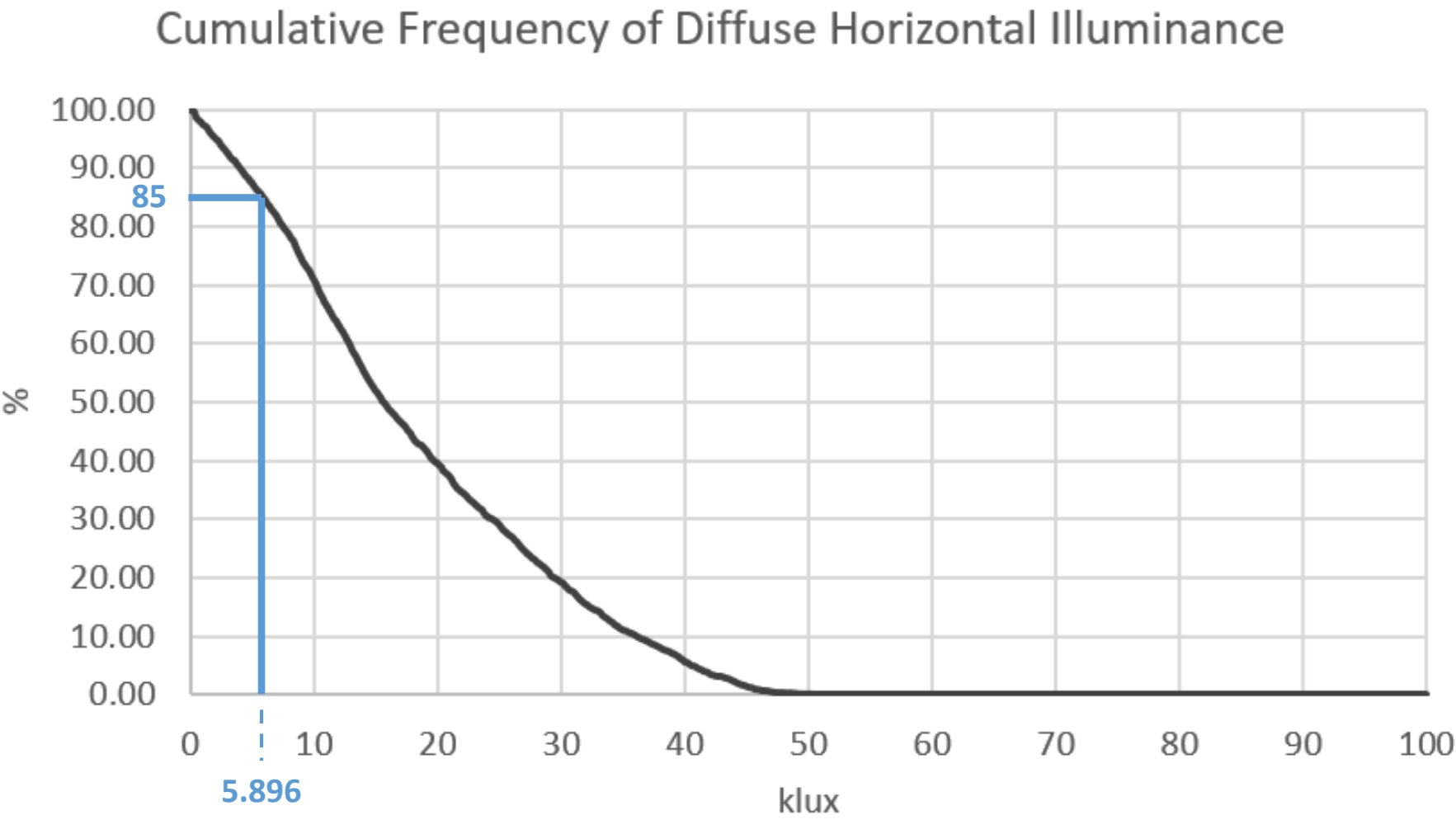
ILLUMINANCE (klux)

	Jan	Feb	Mar	Apr	May	Jun	Jul	Aug	Sep	Oct	Nov	Dec	
1	0	0	0	0	0	0	0	0	0	0	0	0	1
2	0	0	0	0	0	0	0	0	0	0	0	0	2
3	0	0	0	0	0	0	0	0	0	0	0	0	3
4	0	0	0	0	0	0	0	0	0	0	0	0	4
5	0	0	0	0	8	33	11	0	0	0	0	0	5
6	0	0	0	12	82	100	85	36	1	0	0	0	6
7	0	0	12	83	175	197	173	124	52	4	0	0	7
8	0	6	75	180	284	282	274	230	135	61	5	0	8
9	12	64	148	268	381	395	364	324	220	132	54	8	9
10	61	126	226	331	466	483	452	419	315	187	102	47	10
11	98	167	280	397	510	510	512	467	369	226	138	91	11
12	120	187	307	435	489	483	483	487	371	245	151	102	12
13	119	191	319	458	490	490	490	490	361	246	140	98	13
14	133	214	300	422	452	468	472	451	371	258	145	100	14
15	91	170	255	345	428	415	417	407	313	209	98	62	15
16	38	100	182	279	355	332	361	334	221	122	34	6	16
17	1	36	109	185	262	265	279	242	123	38	0	0	17
18	0	0	30	92	161	178	187	139	40	1	0	0	18
19	0	0	1	15	71	97	95	50	1	0	0	0	19
20	0	0	0	0	5	32	23	2	0	0	0	0	20
21	0	0	0	0	0	0	0	0	0	0	0	0	21
22	0	0	0	0	0	0	0	0	0	0	0	0	22
23	0	0	0	0	0	0	0	0	0	0	0	0	23
24	0	0	0	0	0	0	0	0	0	0	0	0	24
	Jan	Feb	Mar	Apr	May	Jun	Jul	Aug	Sep	Oct	Nov	Dec	

TOTAL RADIATION (Wh/m2)

INDOOR DAYLIGHTING DESIGN

Design Sky Illuminance: 5896 lux



500 lux

$500/5896$

DLF = 8.5%

RADIATION ON VERTICAL SURFACES

(MONTH AVG) DAILY CUMULATIVE

