



Aula Prática

Diptera - Nematocera

Carlos E. Winter

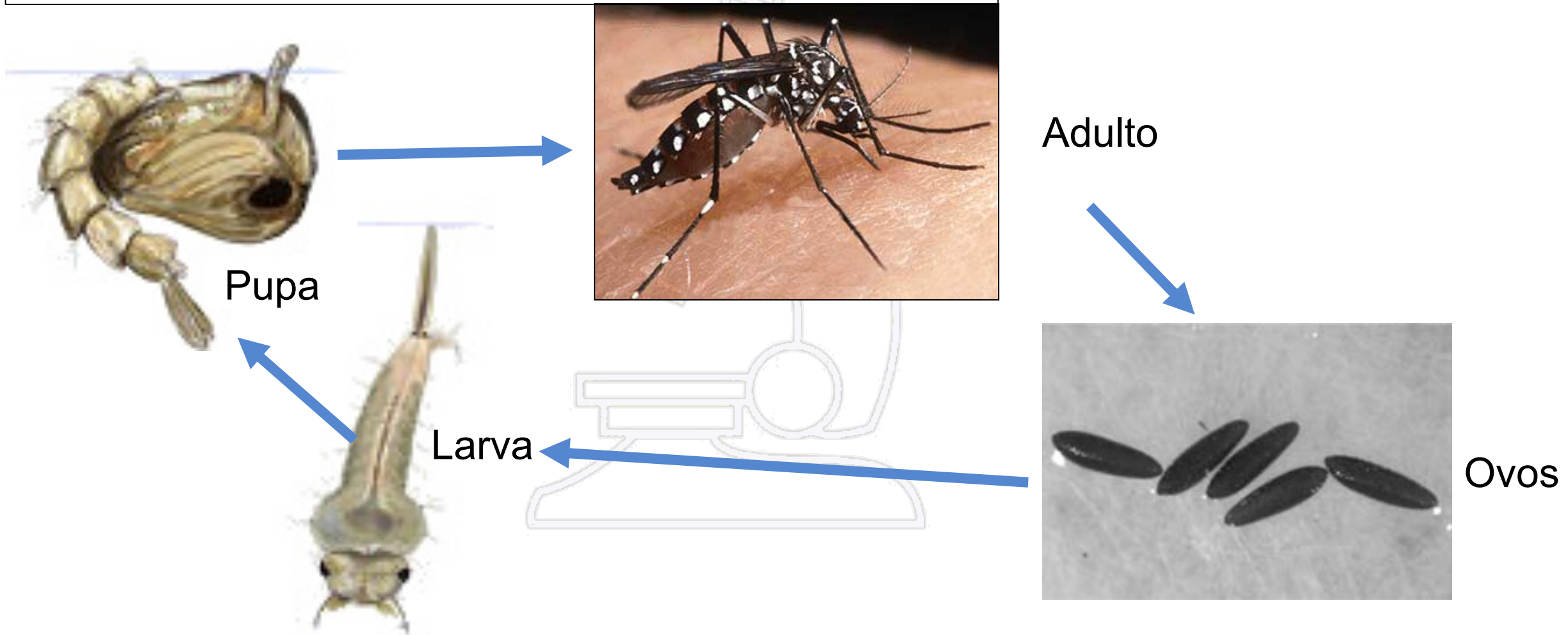
[originais de Alda Backx]



Aedes sp.



Mosquito de cor escura
Áreas claras e pernas com faixas brancas
Probóscide negra com palpos com manchas brancas



Aedes sp.



Hospedeiros: mamíferos

ADULTOS

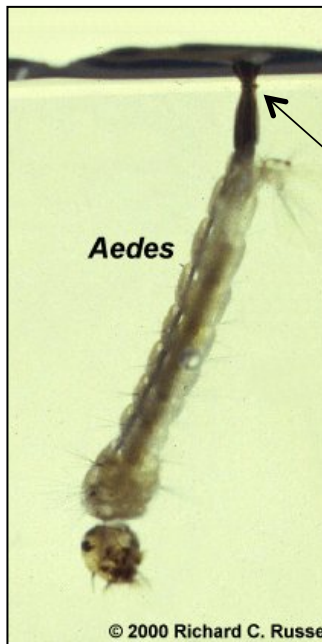


♂



♀

Larva



Aedes

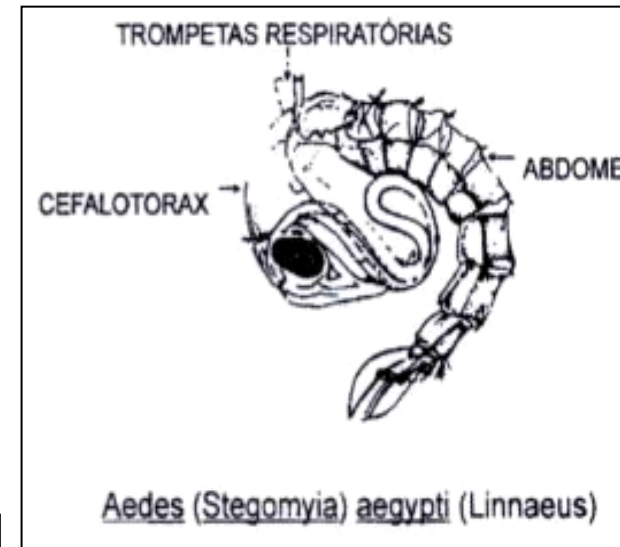
© 2000 Richard C. Russe

Larva com sifão respiratório – posição vertical

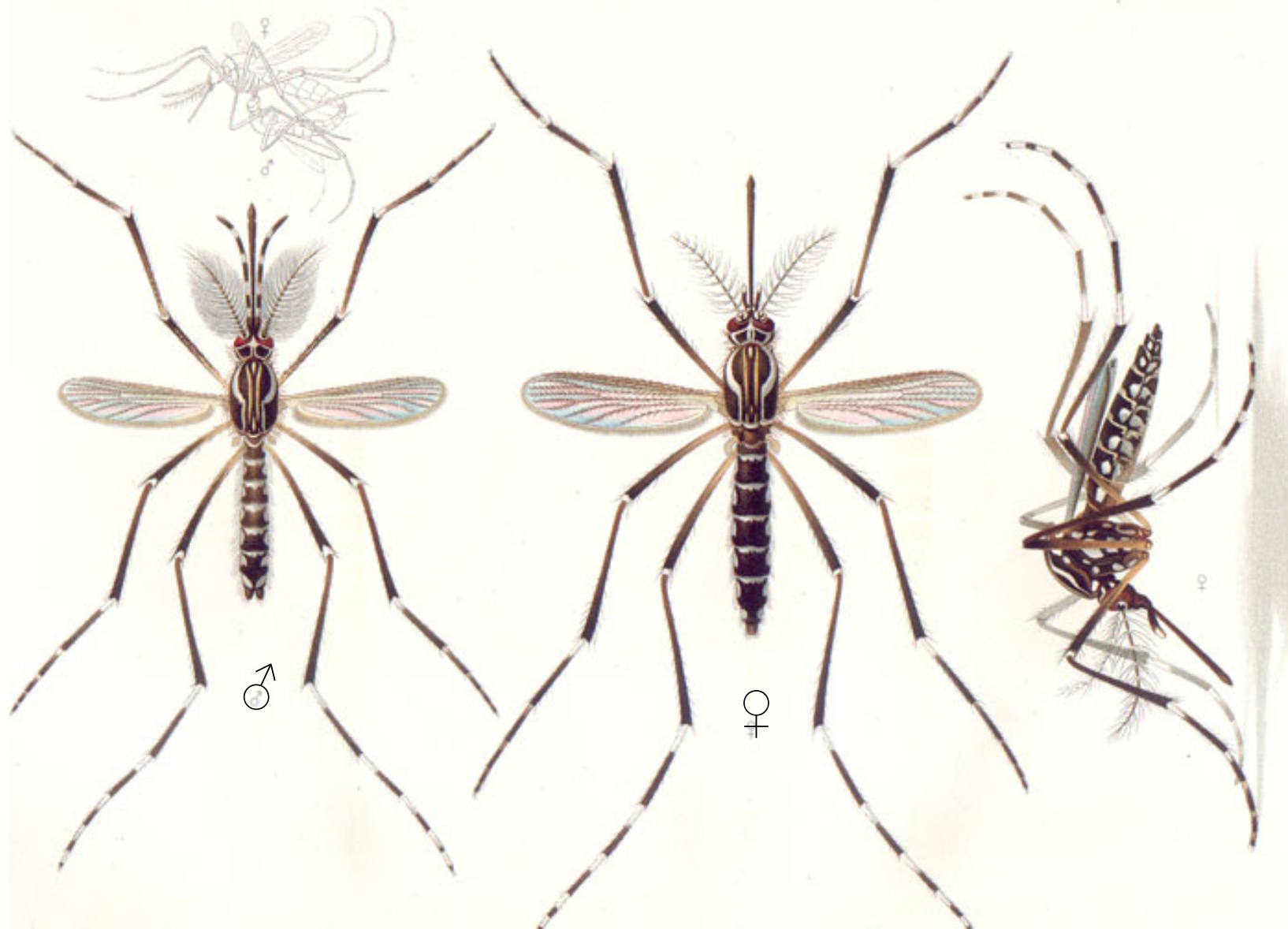


Pupa

Pupa flutua na superfície
Apresenta trompeta respiratória



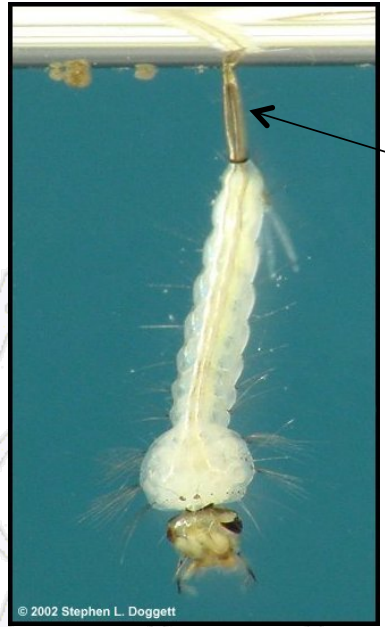
Aedes aegypti



Culex sp.



Larva



Larva com sifão respiratório



Pupa

Pupa flutua apresenta trompeta respiratória



Ovos



Adulto



♂



© 2002 Dept. Medical Entomology, ICPMR

Machos:
aparelho bucal incapaz de perfurar a pele, antenas muito plumosas de grande tamanho



© 2002 Dept. Medical Entomology, ICPMR

♀

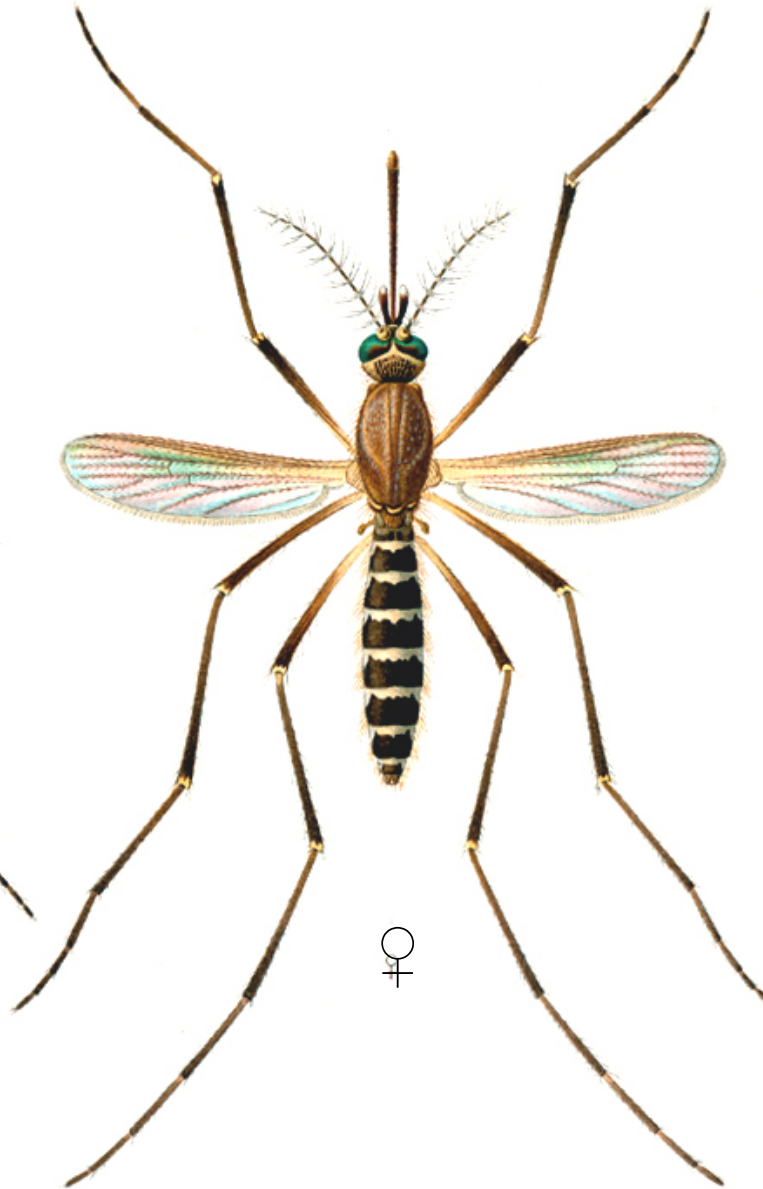
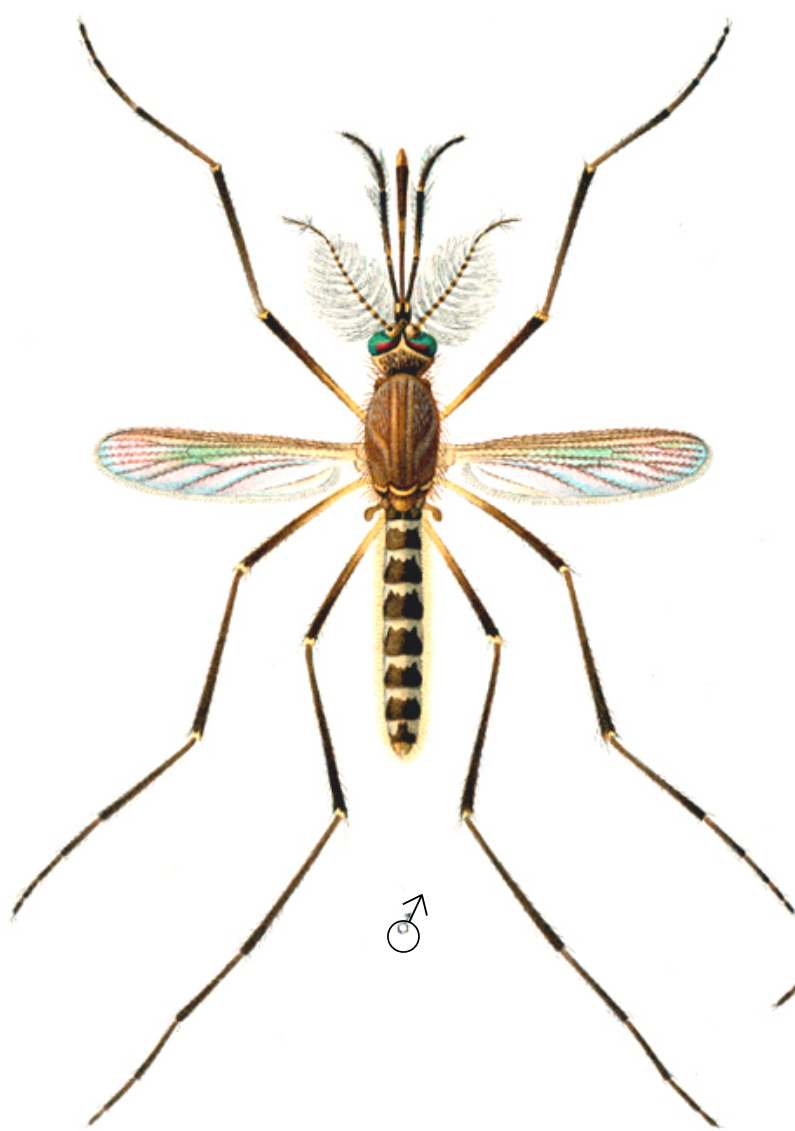


© 2002 Dept. Medical Entomology, ICPMR

Fêmea: é hematófaga, com probóscide longa

Hospedeiros: mamíferos e aves

Culex quinquefasciatus

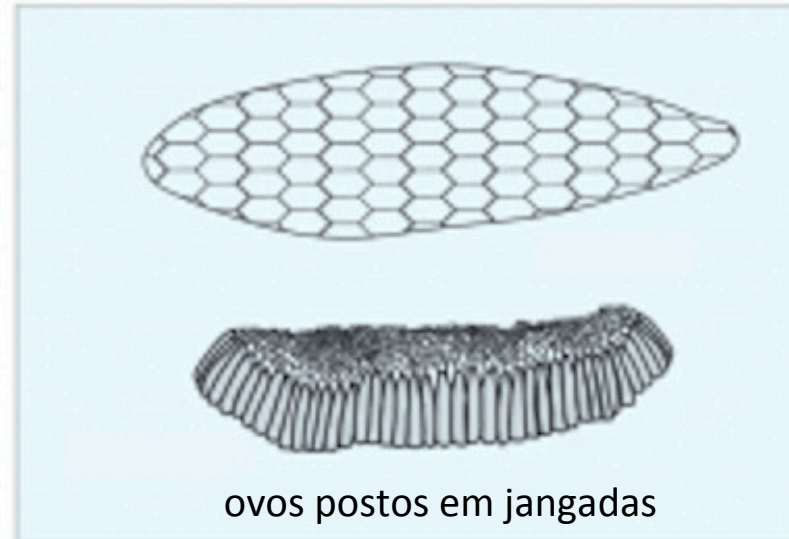




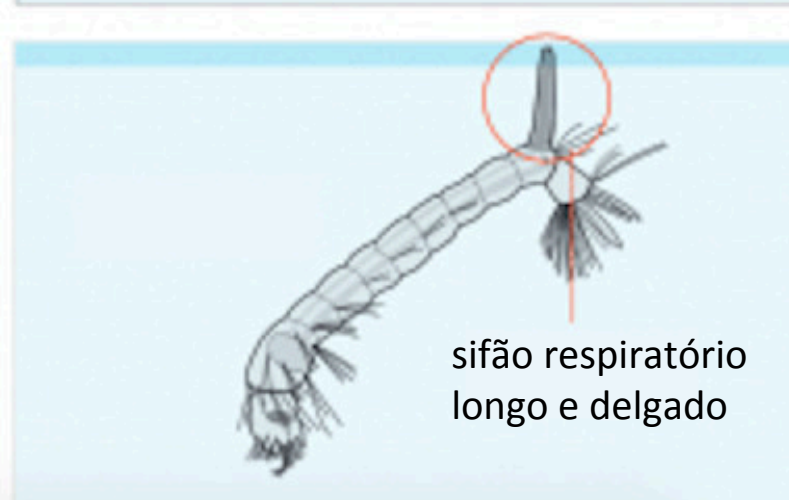
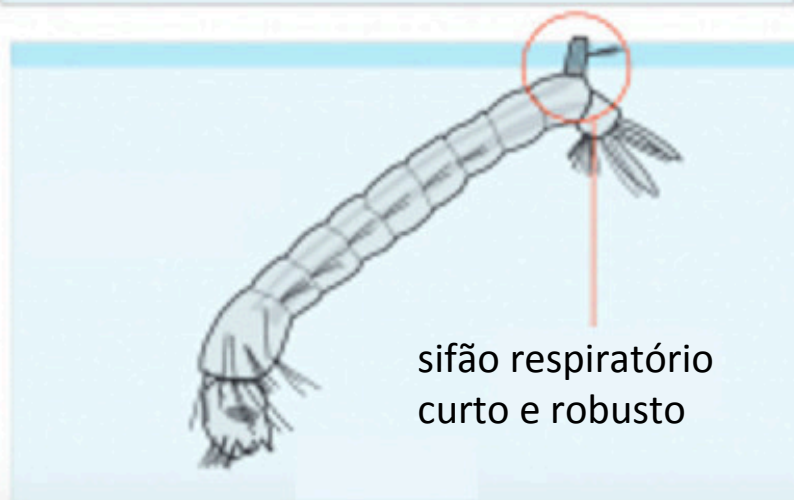
Aedes sp.



Culex sp.



OVOS



LARVAS



Aedes aegypti



Culex quinquefasciatus



<https://bit.ly/3N6QbNA>



- Tórax arqueado

- Pernas curtas

- Antenas em forma de chifre

- Asas com nervuras em somente uma parte

- Aspecto de “búfalo”

- **Hospedeiros:** mamíferos e aves

Simulium spp.

