

TG4 - grupo 5

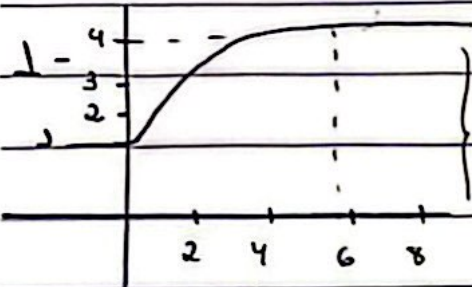
Ara Carolina Perez Comargo

Maria Julia Stankevicius

Carolina Manfredini dos Santos

Millene Siqueira Goncalves

Karina Matos Ribeiro



entrada = c

$Y(s) = K_p$

saída = cm

$Z_p \cdot s + 1$

→ a partir do gráfico consideramos $T = 7s$

$$T = 5 \cdot \tau_p \rightarrow \tau_p = 7/5 = 1,4$$

$$\rightarrow K_p = \frac{\Delta Y(+)}{\Delta c(+)} = \frac{cm}{c} = \frac{3}{3} = 1$$

$$\rightarrow G(s) = \frac{1}{1,4 \cdot s + 1}$$