



# Cortes e Seções

---

PCC3100 Mecatrônica – Representação Gráfica para  
Projeto

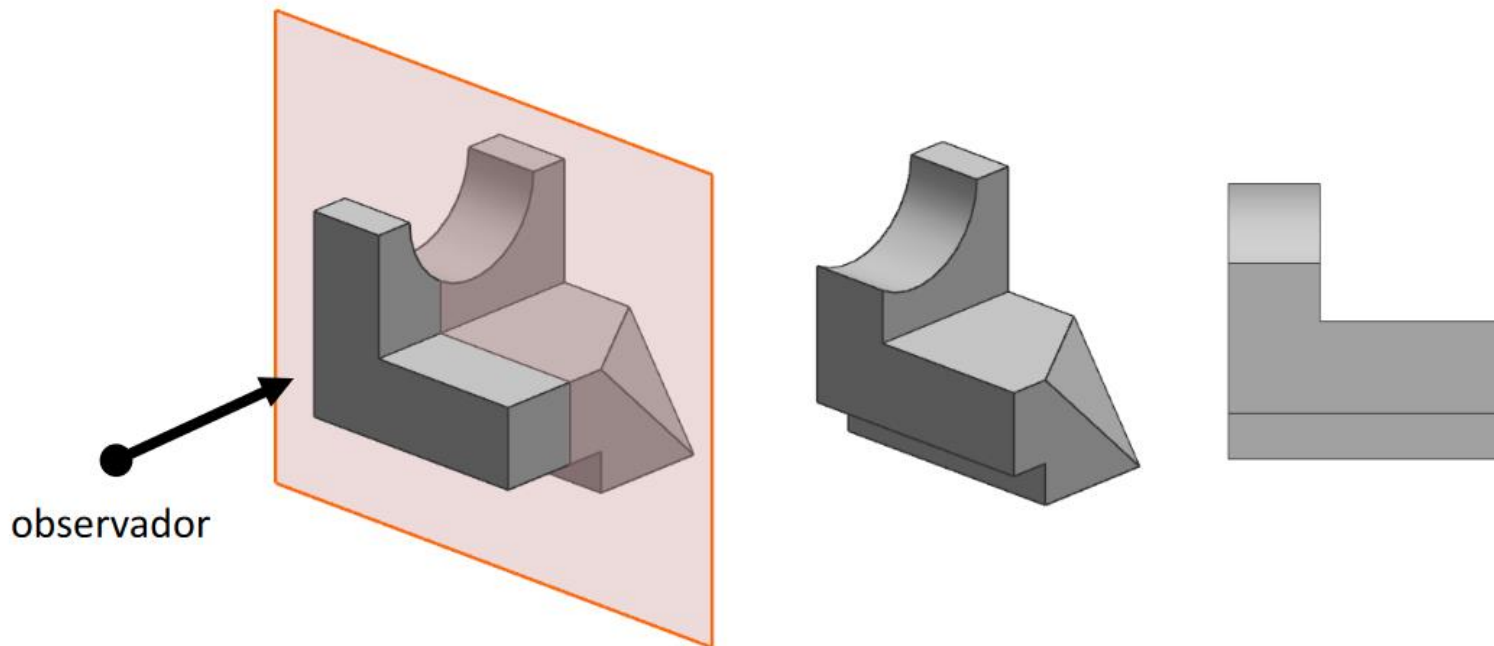


# Vistas seccionais

---

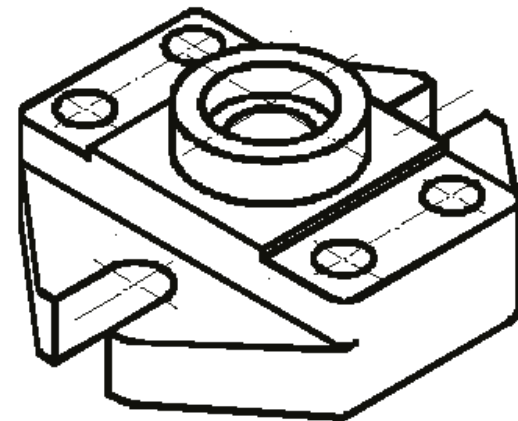
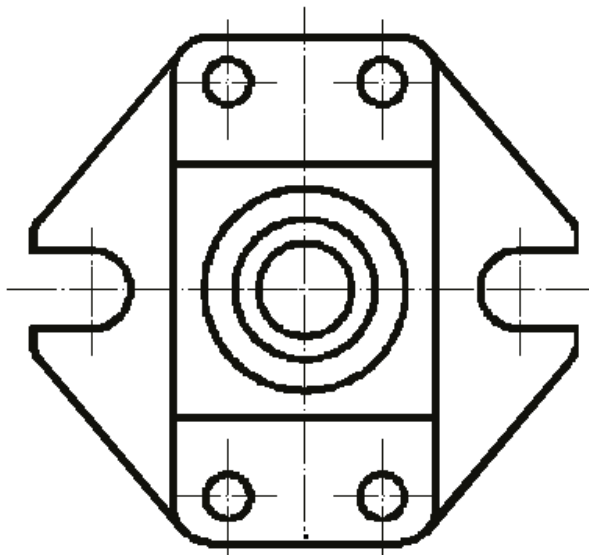
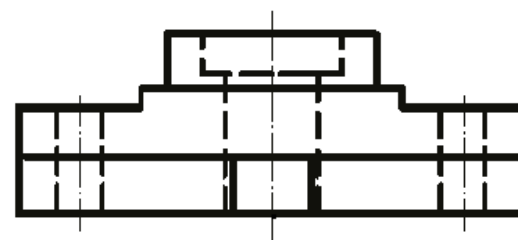
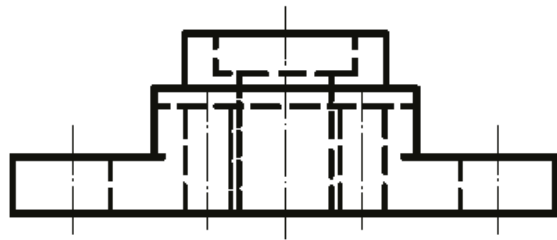
- A **Vista Ortográfica Seccional** é o desenho do que se vê como resultado do desmembramento de uma peça feito segundo um Plano Secante (determinado pelo Desenhista), retirando a parte da peça mais próxima do observador.

# Vistas seccionais





# Melhora a compreensão....



# Melhora a compreensão....

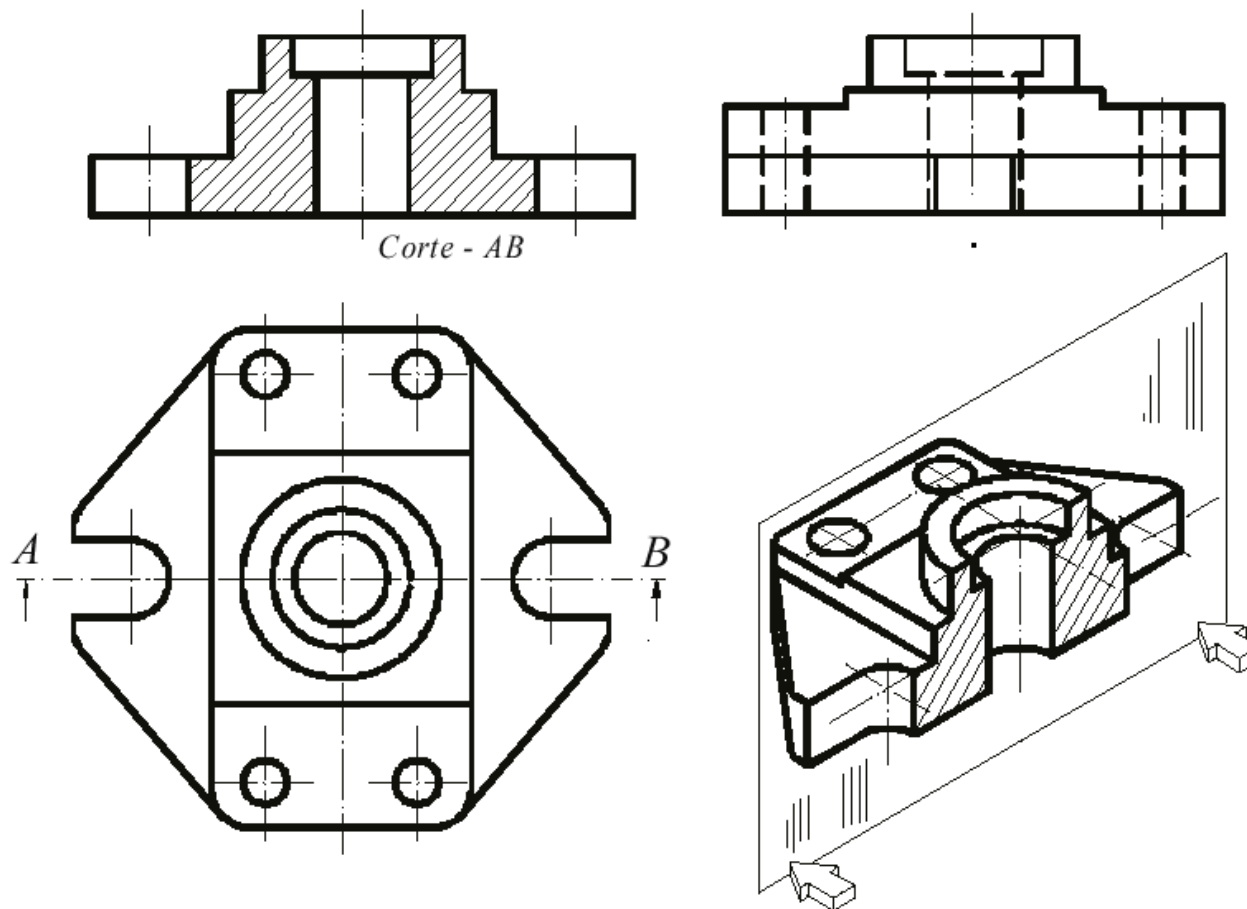
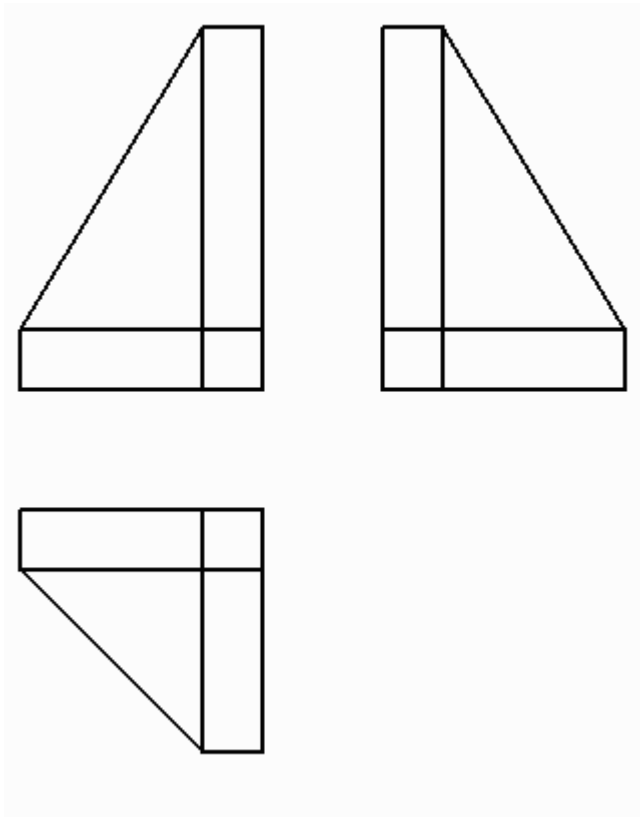


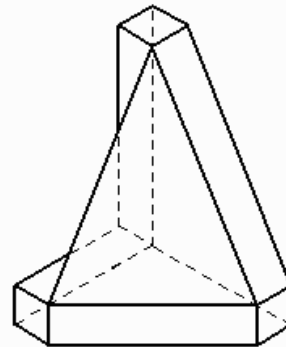
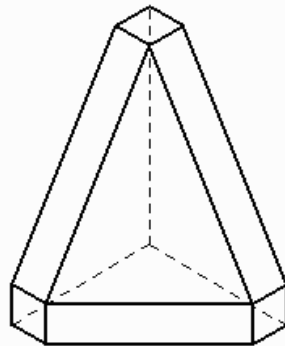
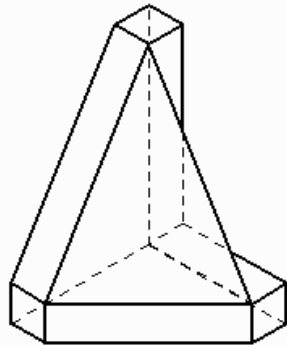
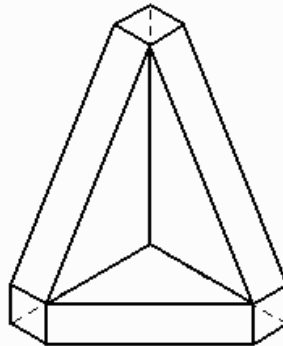
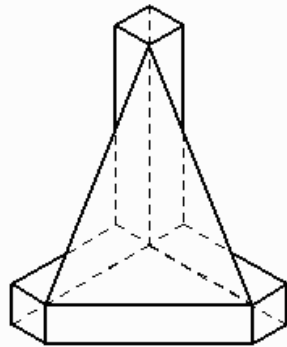
Figure 5.2

# Necessidade da vista seccional



Que peça está representada pelas vistas ao lado ?

# Necessidade da vista seccional



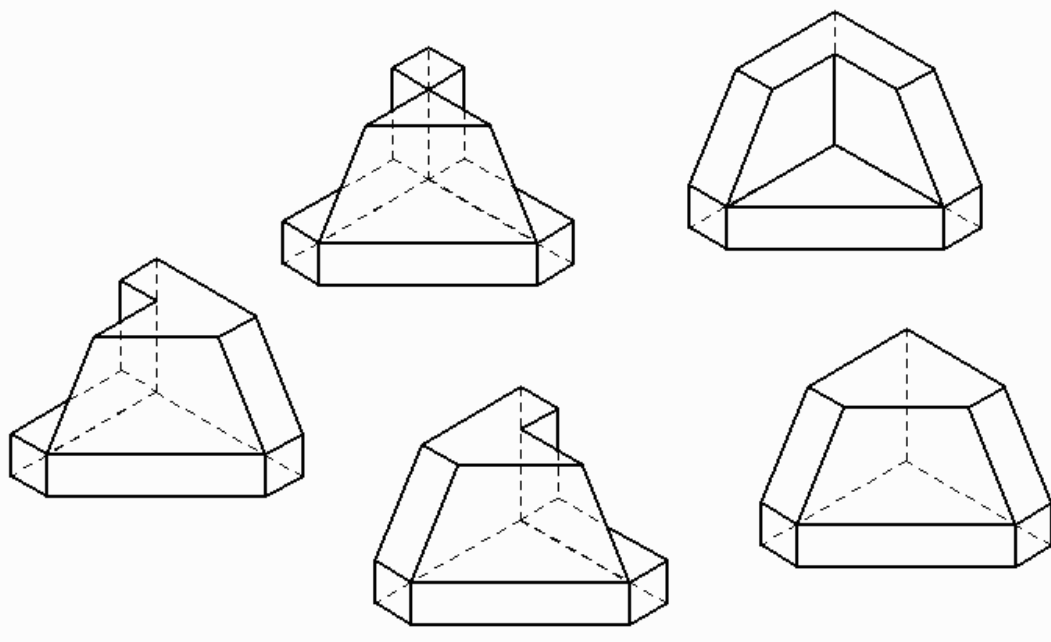
Em qual destas  
5 peças você  
pensou ?

TODAS estão  
corretas !

**∴ Estas 3 (ou  
mesmo 6)  
vistas  
produzem  
ambigüidade**



# Necessidade da vista seccional



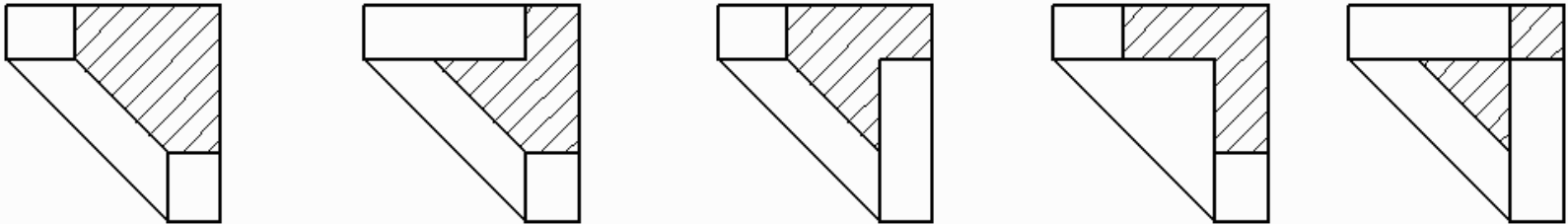
A secção de cada uma das peças é única...



# Necessidade da vista seccional

---

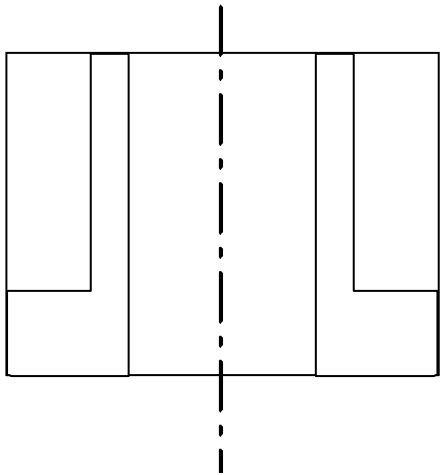
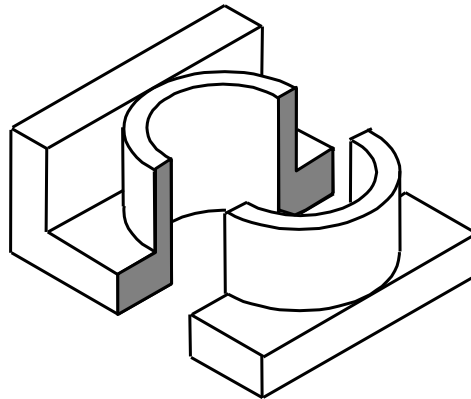
**∴ a representação da vista superior em corte elimina a ambigüidade:**



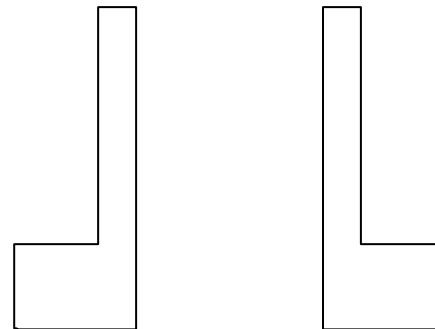


# Corte x Seção

---

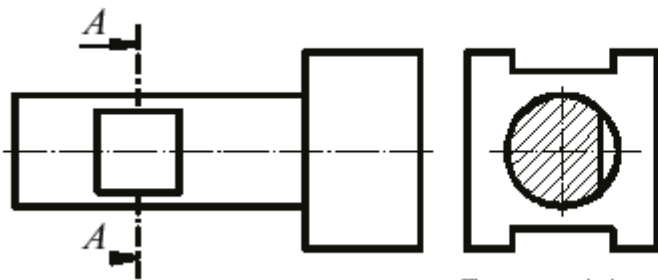


CORTE

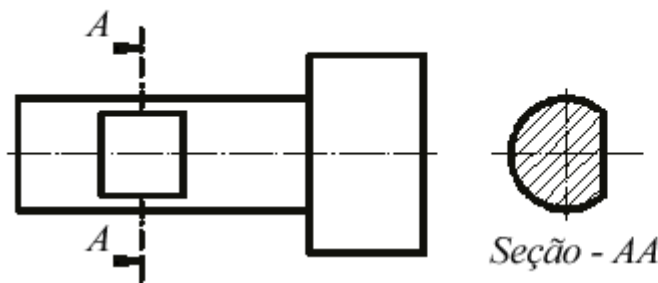


SEÇÃO

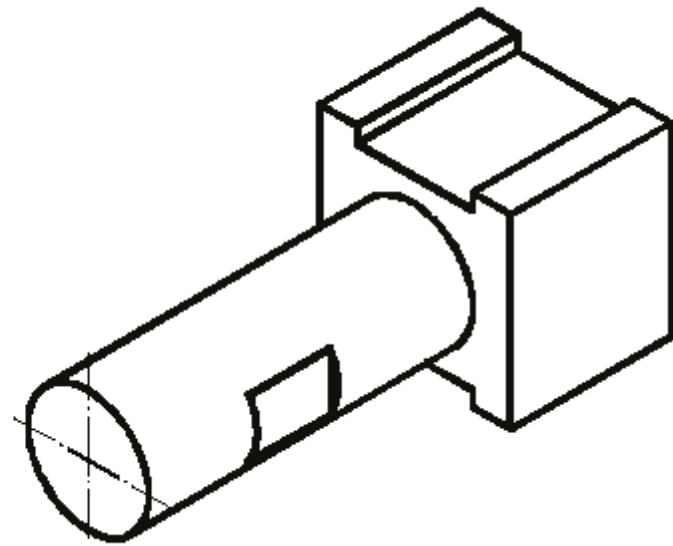
# Corte x Seção



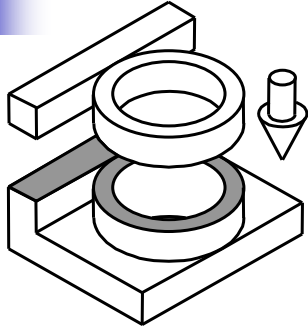
*Corte - AA*



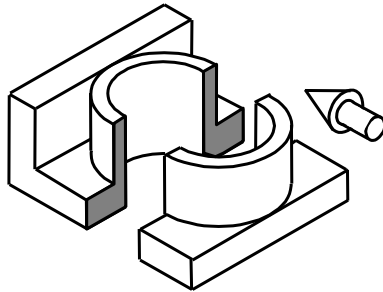
*Seção - AA*



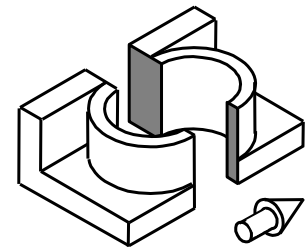
# Cortes



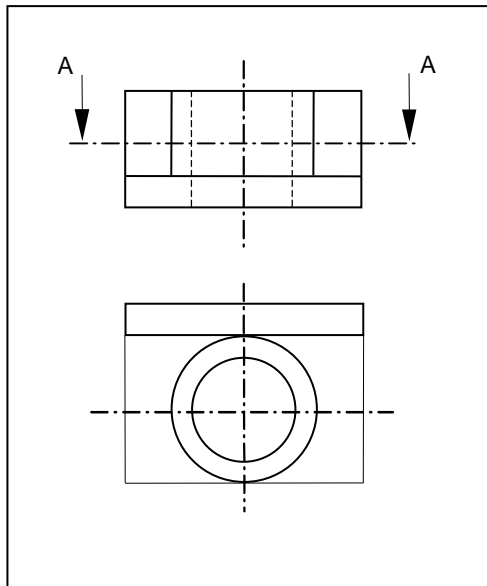
Superior



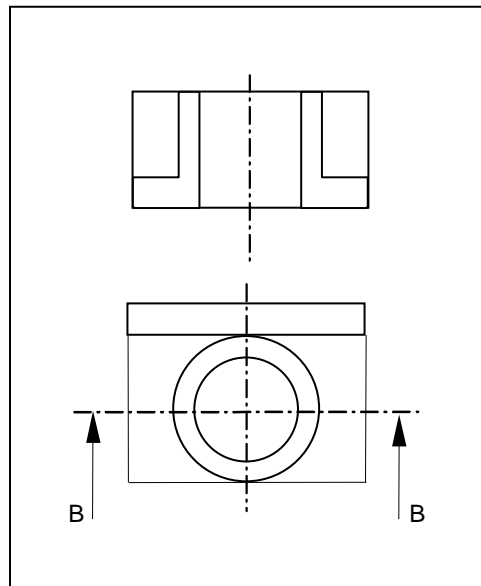
Frontal



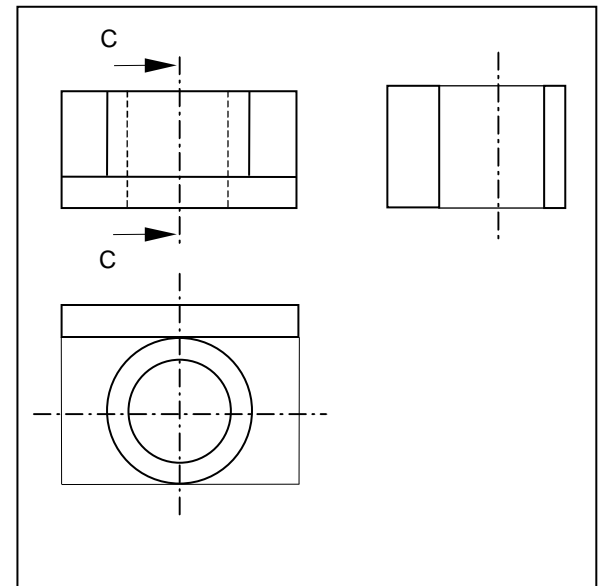
Lateral



Corte AA



Corte BB

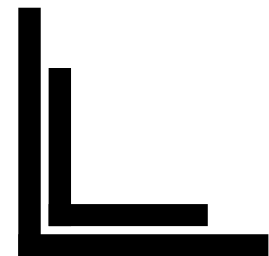
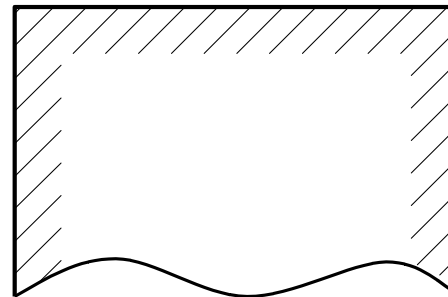
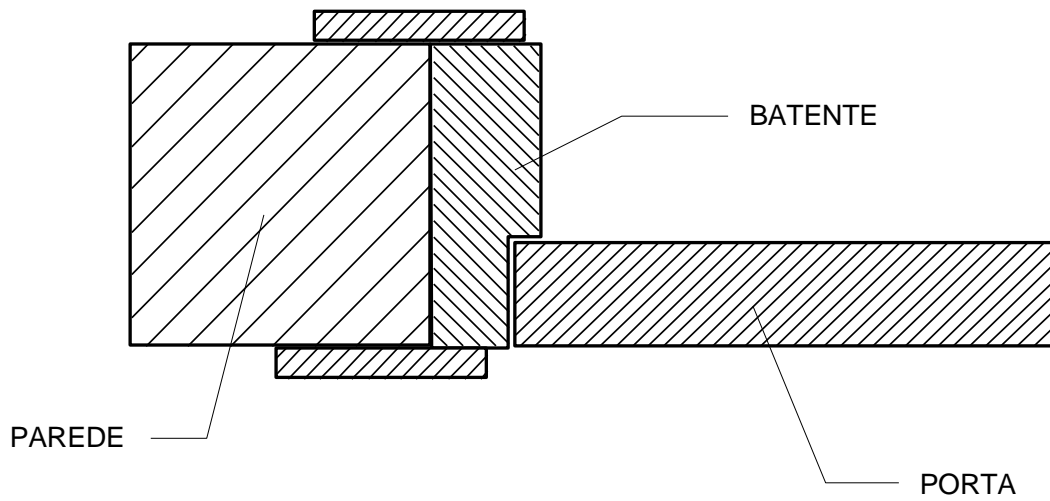


Corte CC



# Hachuras

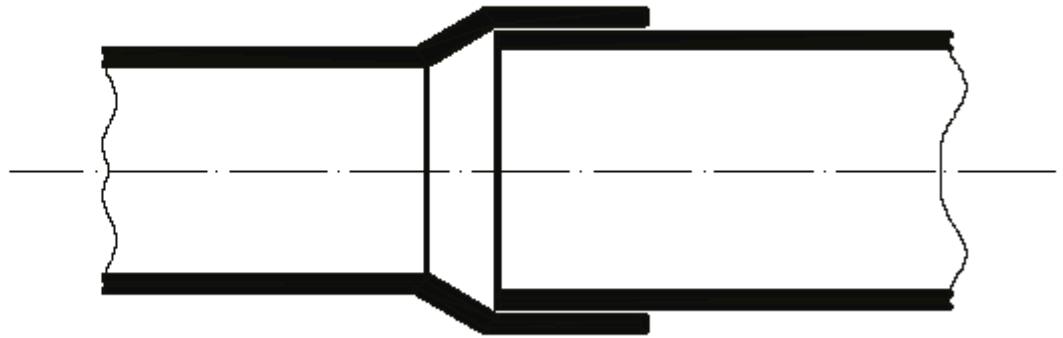
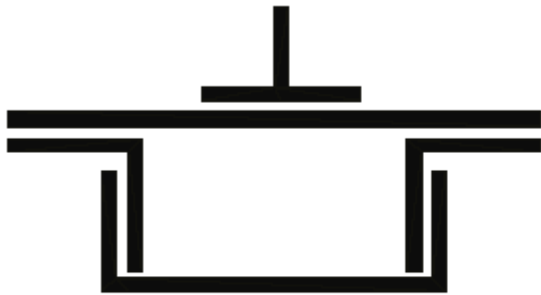
---





# Hachuras

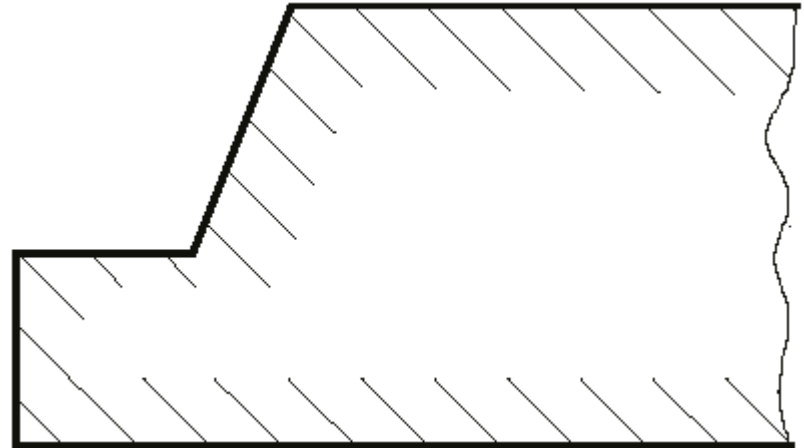
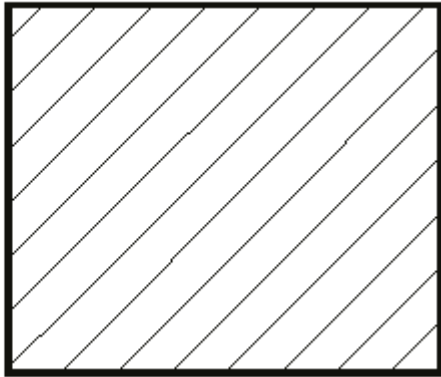
---





# Hachuras

---



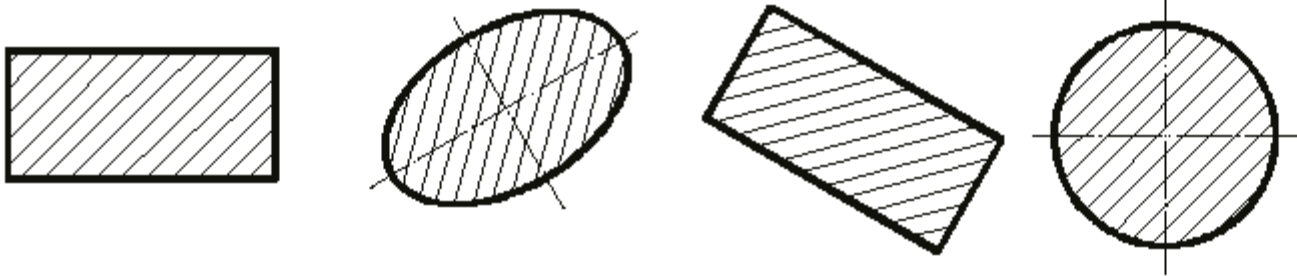
- Espaçamento varia com o tamanho da área a ser hachurada.





# Hachuras

---

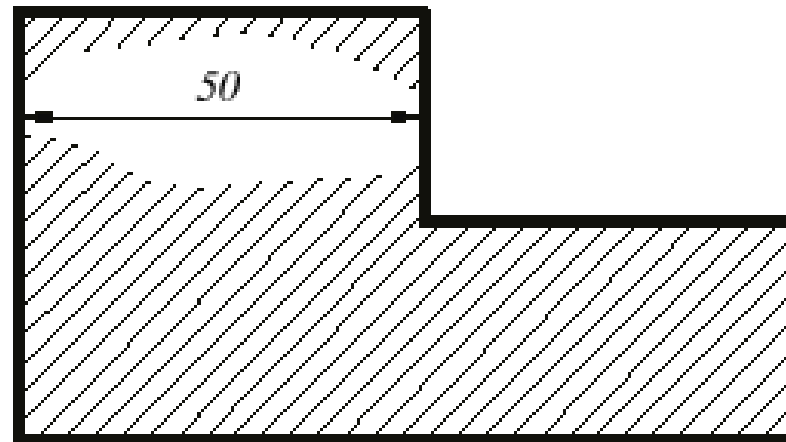


- As hachuras devem formar ângulo de  $45^\circ$  com o eixo principal da peça.



# Hachuras

---



- Se necessário, interrompa a hachura.

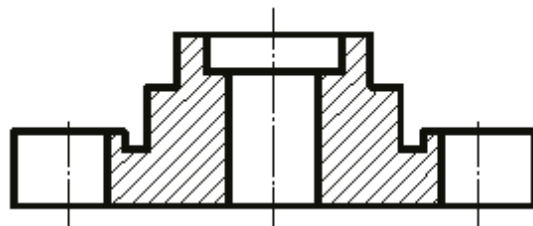


# Plano secante

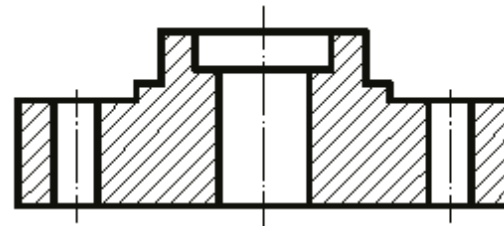
---



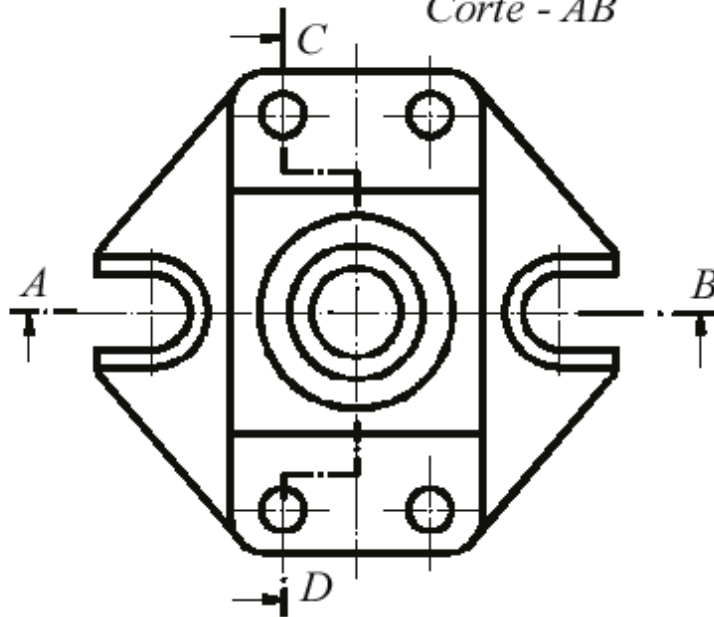
# Plano secante



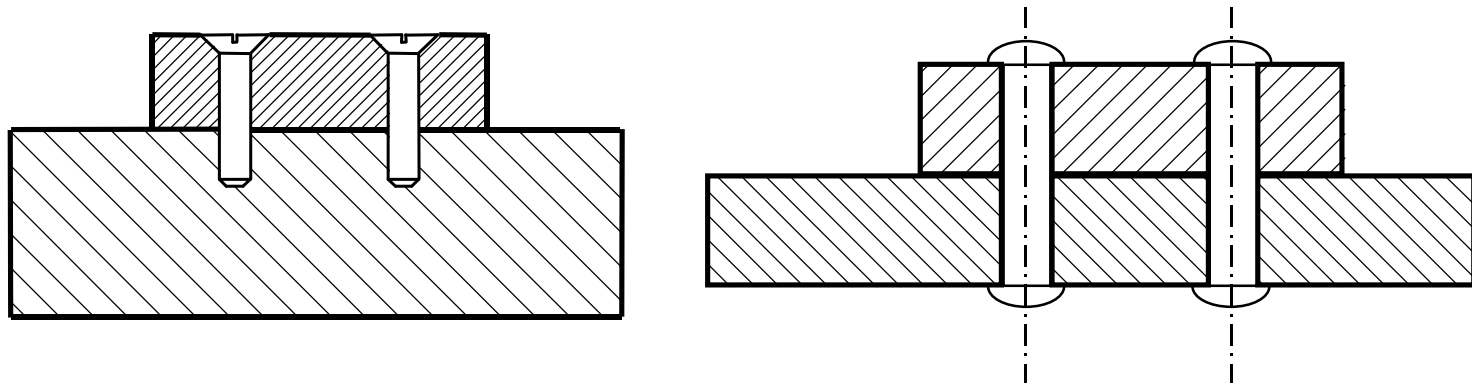
*Corte - AB*



*Corte - CD*

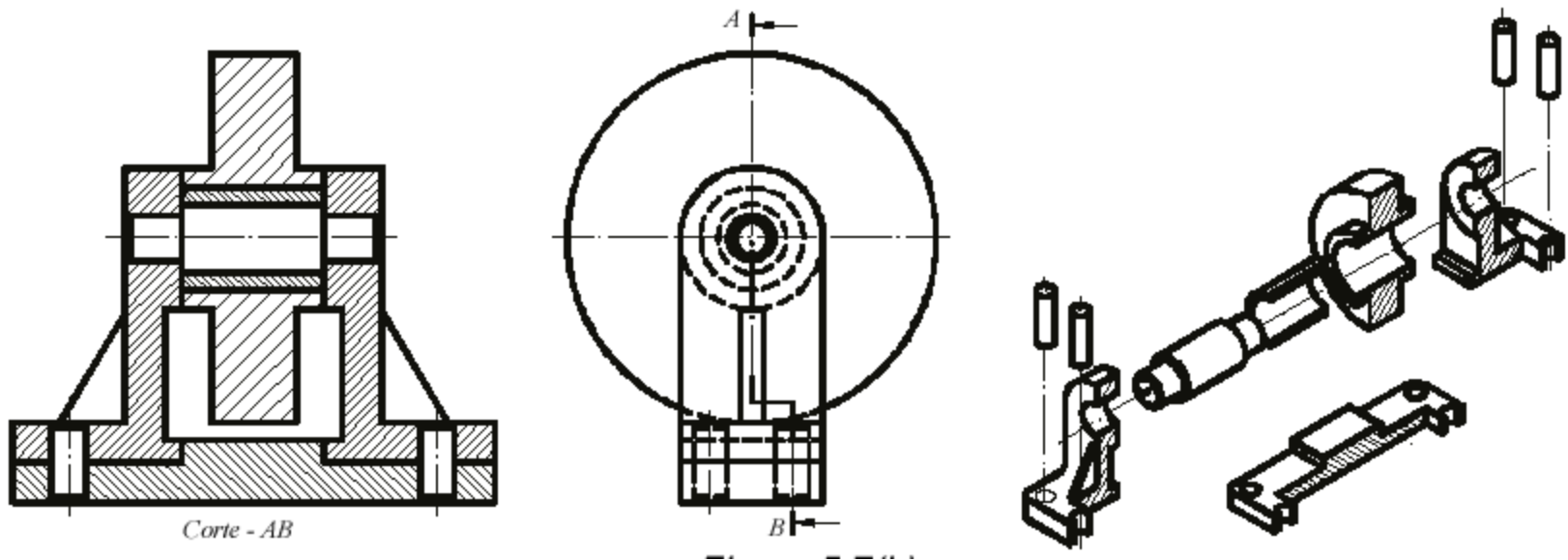


# Omissão de hachuras

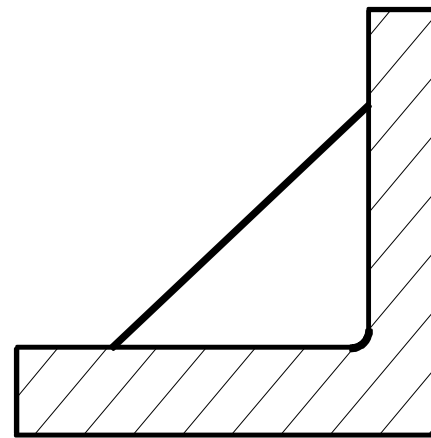
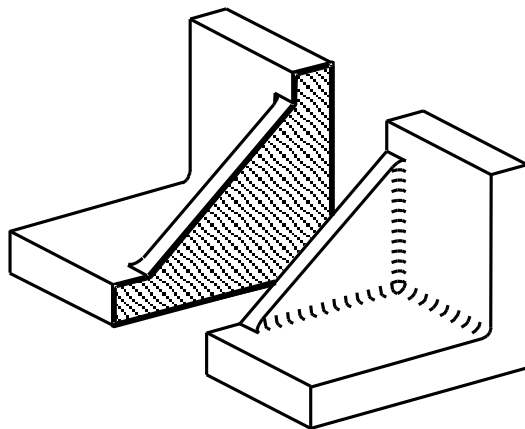


- Pinos, rebites, parafusos, porcas, arruelas, chavetas, eixos, nervuras, etc.
- Somente em corte longitudinal!

# Omissão de hachuras



# Omissão de hachuras

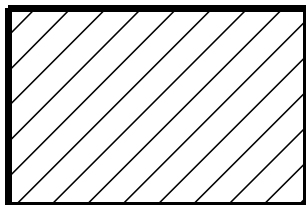


- Nervuras

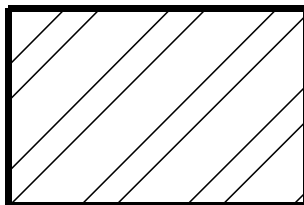


# Padrões de hachuras (1)

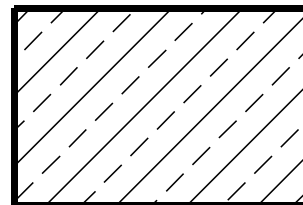
---



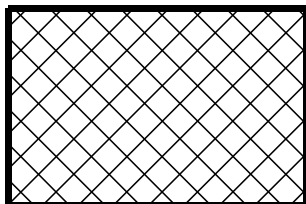
FERRO



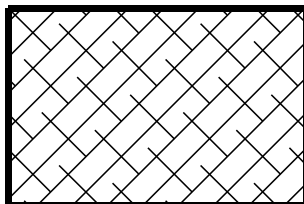
AÇO



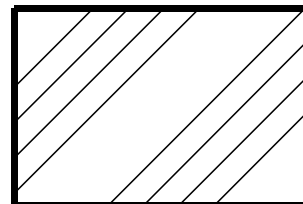
COBRE, BRONZE,  
LATÃO. ETC.



CHUMBO, ZINCO,  
LIGAS ANTI-FRICÇÃO



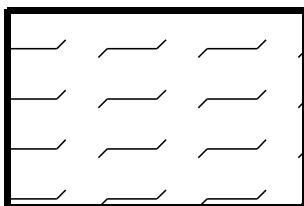
ALUMÍNIO, MAGNÉSIO,  
LIGAS LEVES



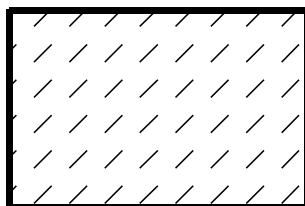
BORRACHA, PLÁSTI-  
COS E ISOLANTES



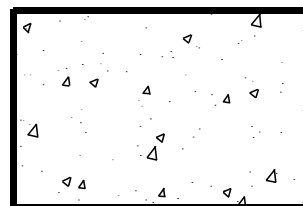
# Padrões de hachuras (2)



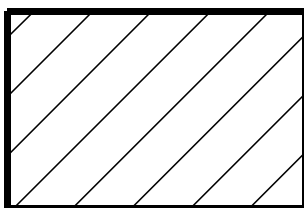
CORTIÇA, FELTRO,  
COURO, FIBRA,  
TECIDOS, ETC.



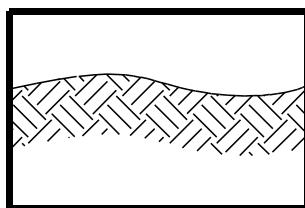
MÁRMORE, ARDÓSIA,  
PORCELANA, VIDRO,  
MATERIAL CERÂMICO



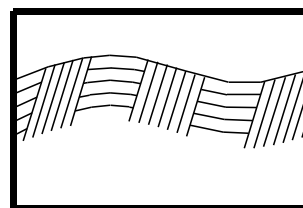
CONCRETO



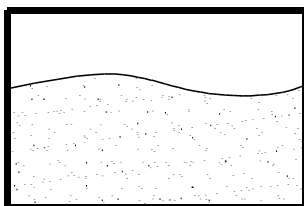
ALVENARIA



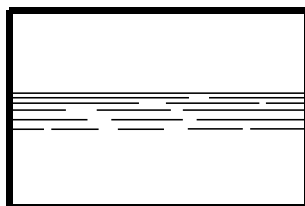
TERRA



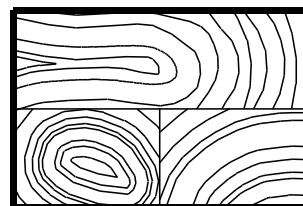
ROCHA



AREIA



LÍQUIDOS



LONGITUDINAL

TRANSVERSAL



# Tipos de Corte (1)

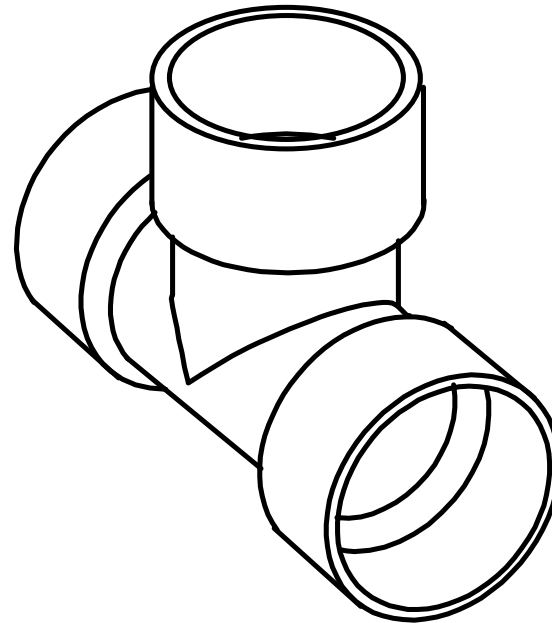
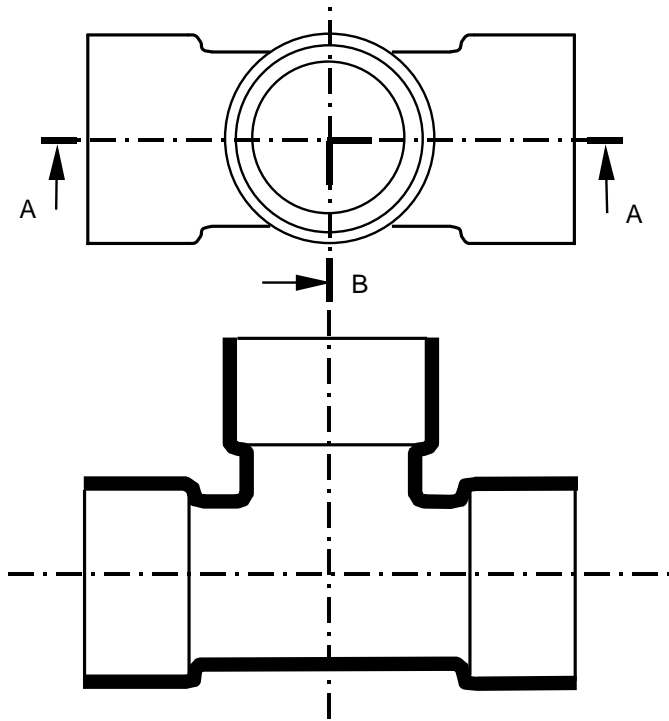
---

- Pleno ou Total;
- Meio Corte;
- Corte Composto;
- Corte Rebatido;
- Corte Parcial;
- Corte Auxiliar;
- Corte Fantasma.

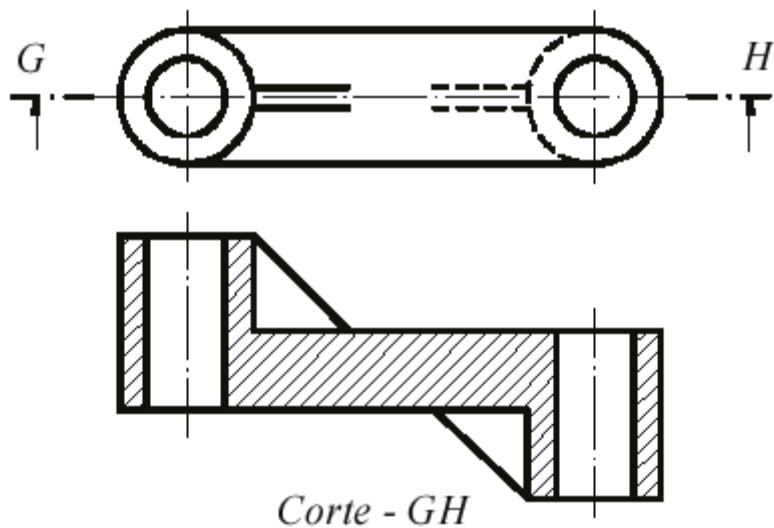


# Corte Pleno

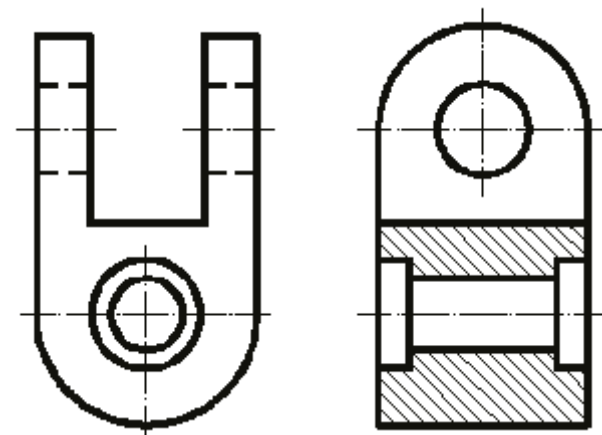
---



# Corte Pleno



*3º Diedro*

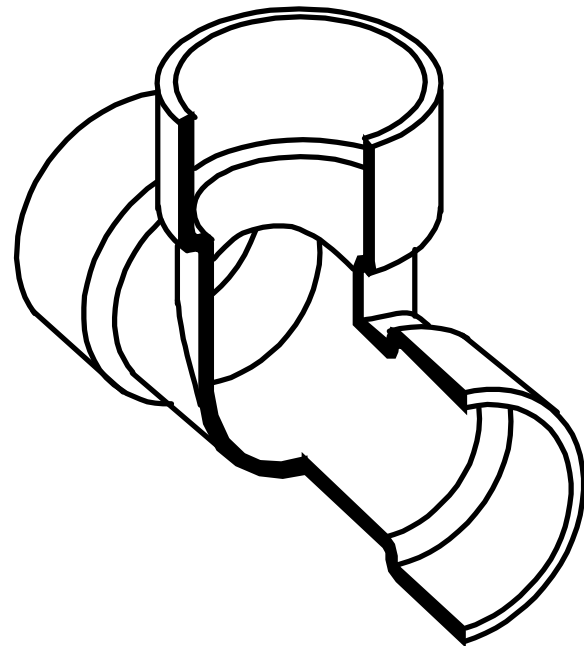
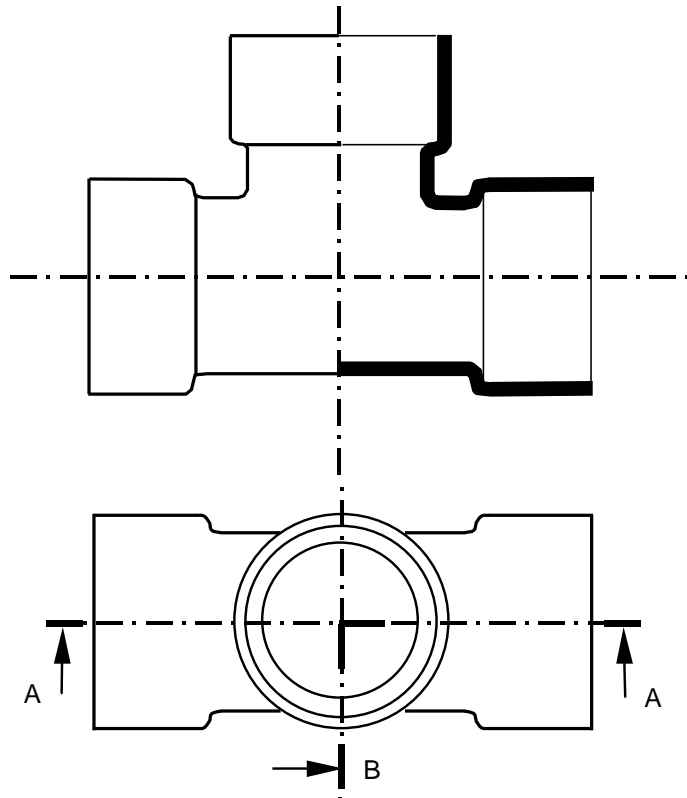


Omissão de linha de corte  
(quando é óbvia)

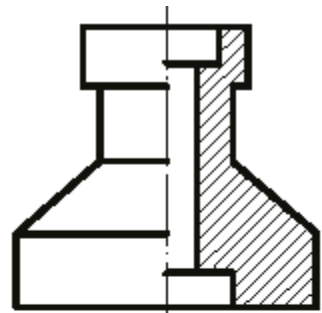


# Meio Corte

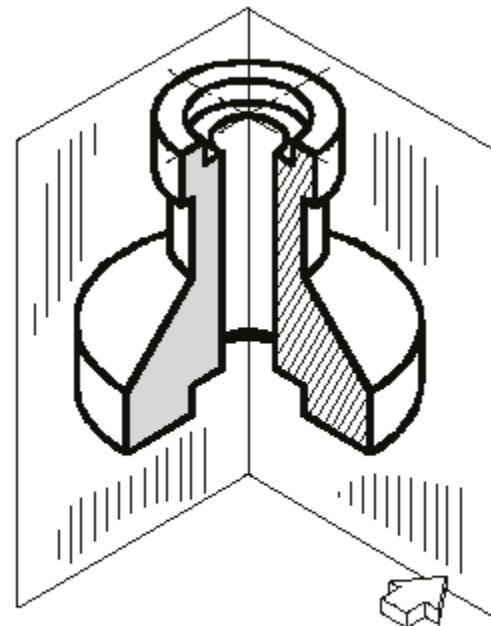
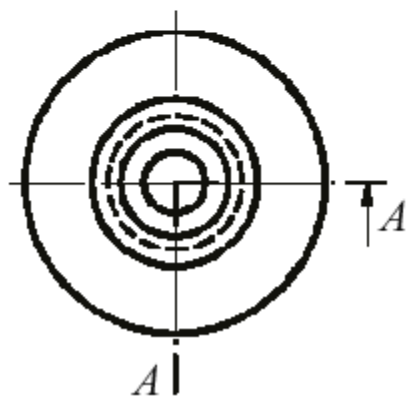
---



# Meio Corte



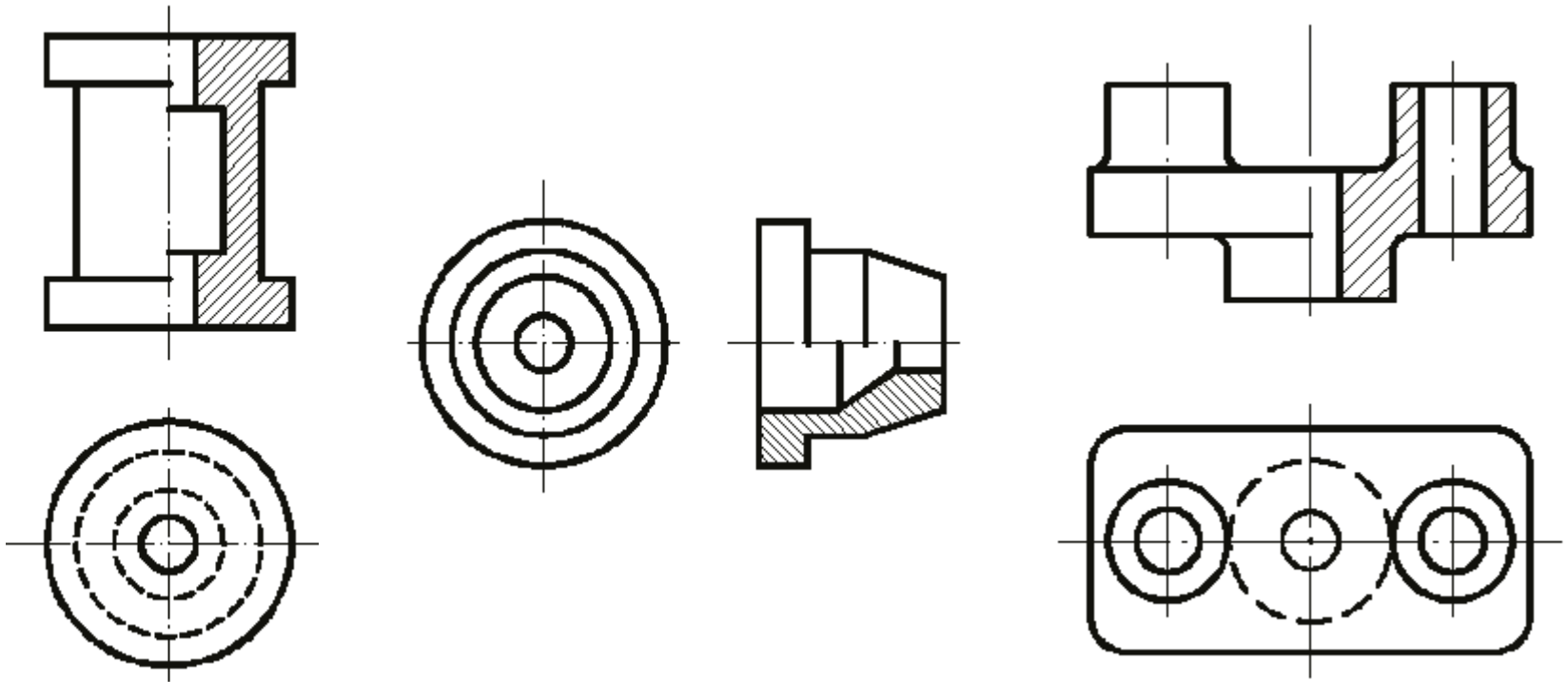
*Corte - AA*





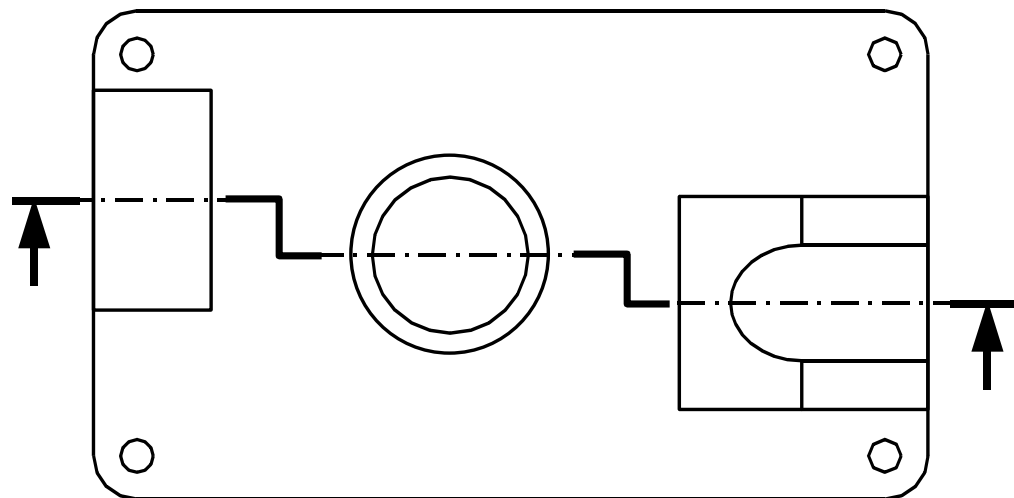
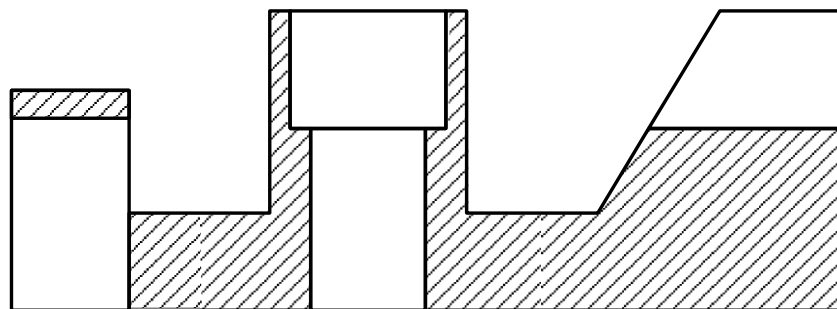
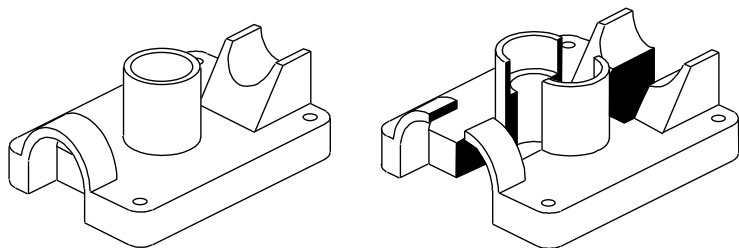
# Meio Corte

---



Metade em corte sempre no lado direito / inferior

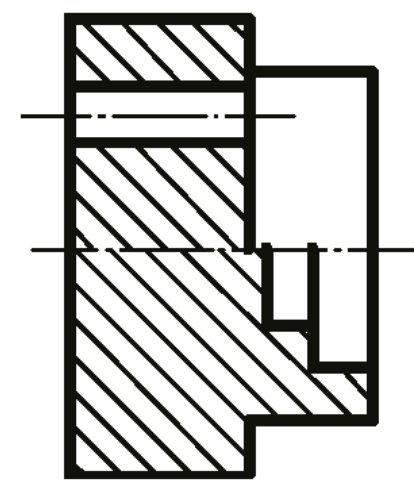
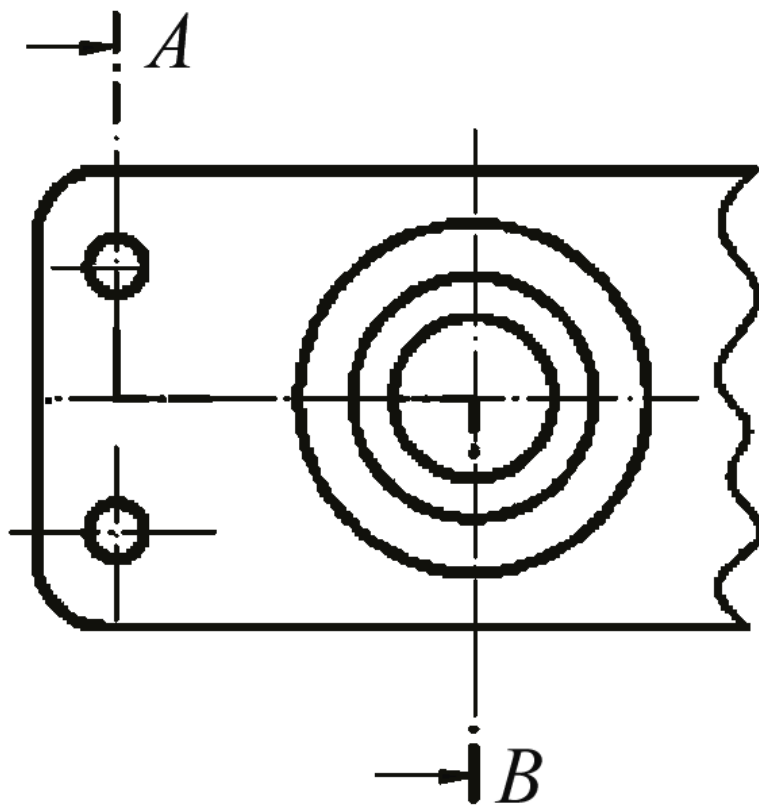
# Corte Composto





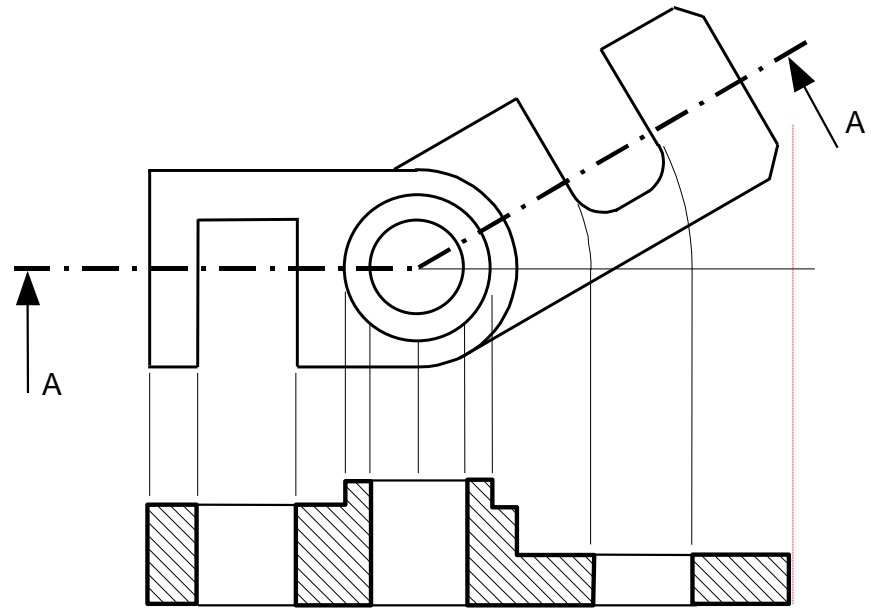
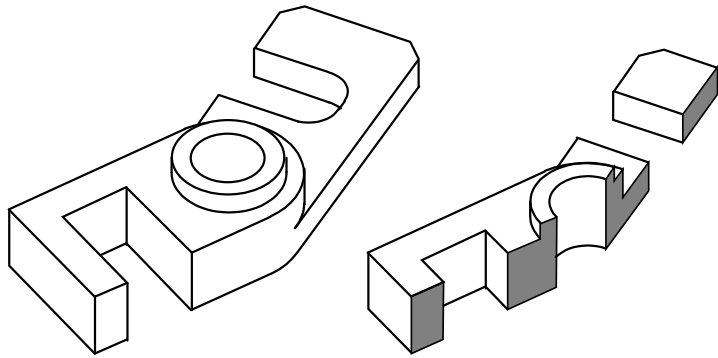


# Corte Composto

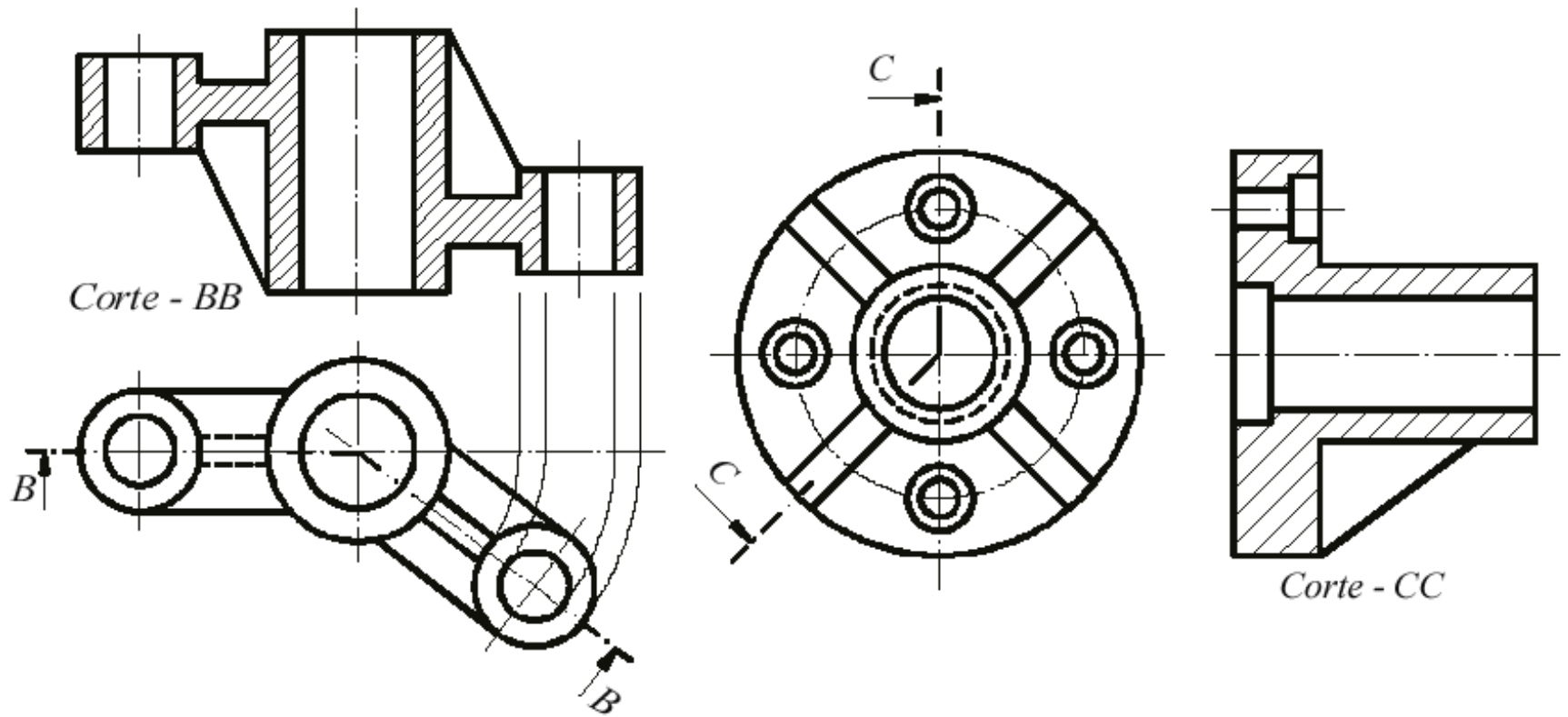


*Corte - AB*

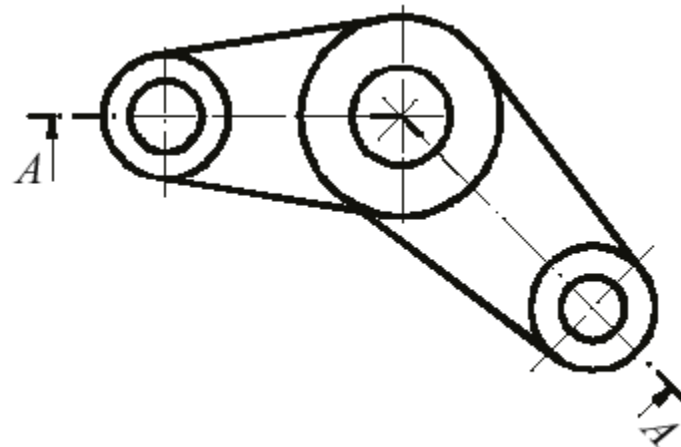
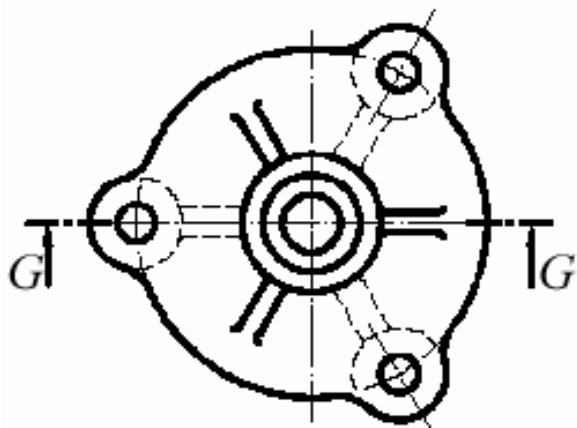
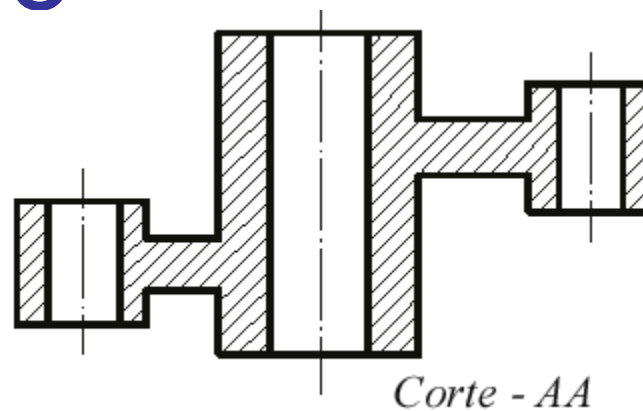
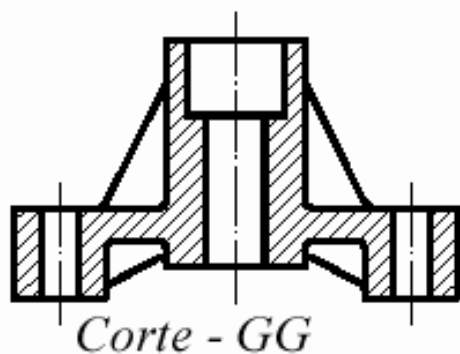
# Corte Rebatido



# Corte Rebatido

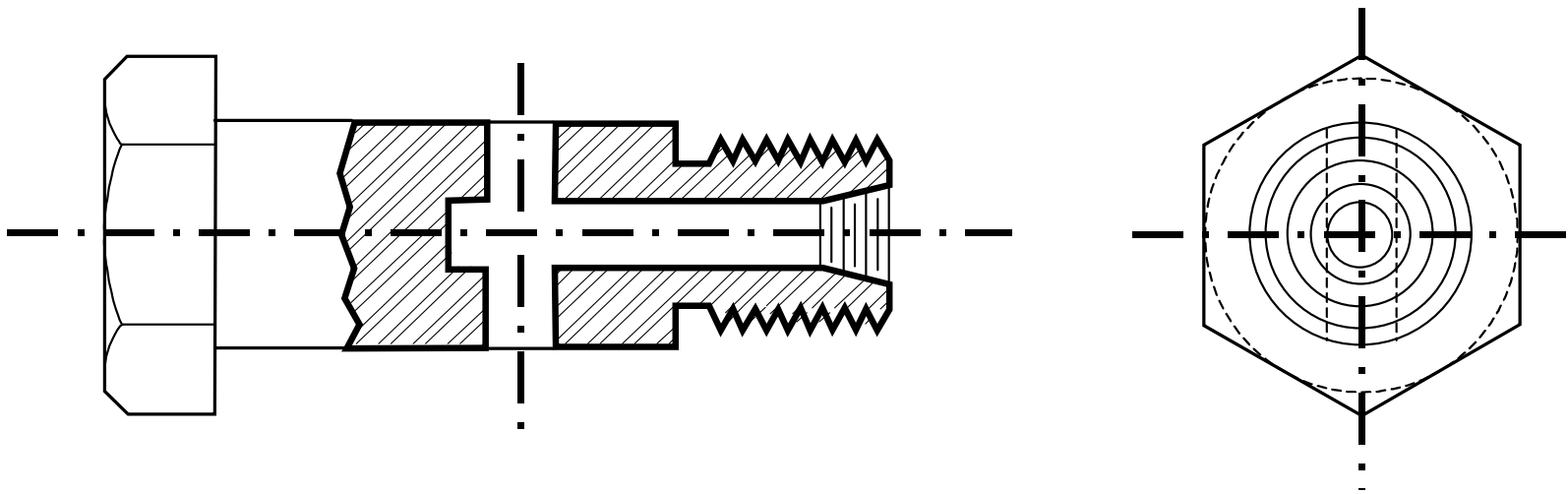


# Corte Rebatido

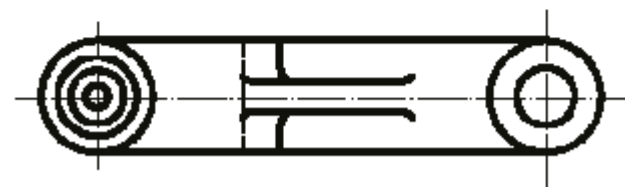
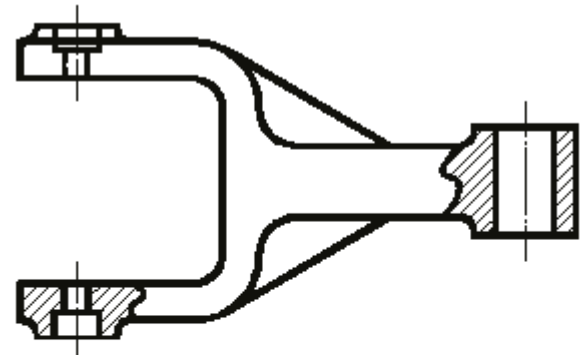
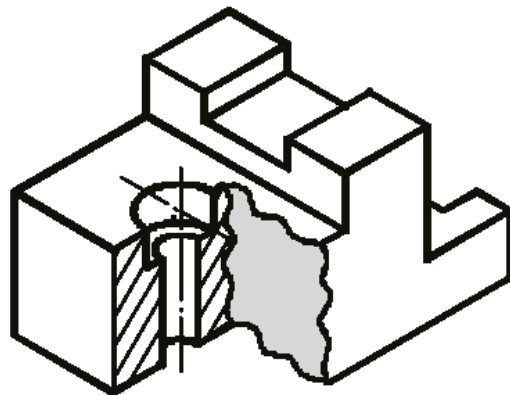
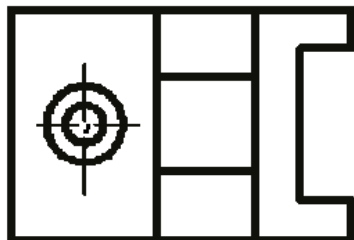
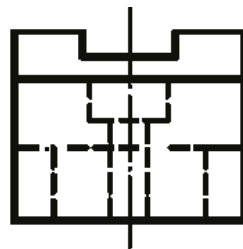
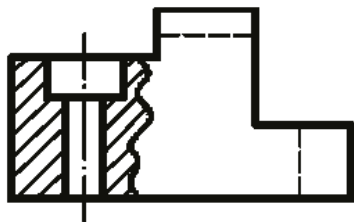


Não se coloca nenhuma indicação explícita do rebatimento

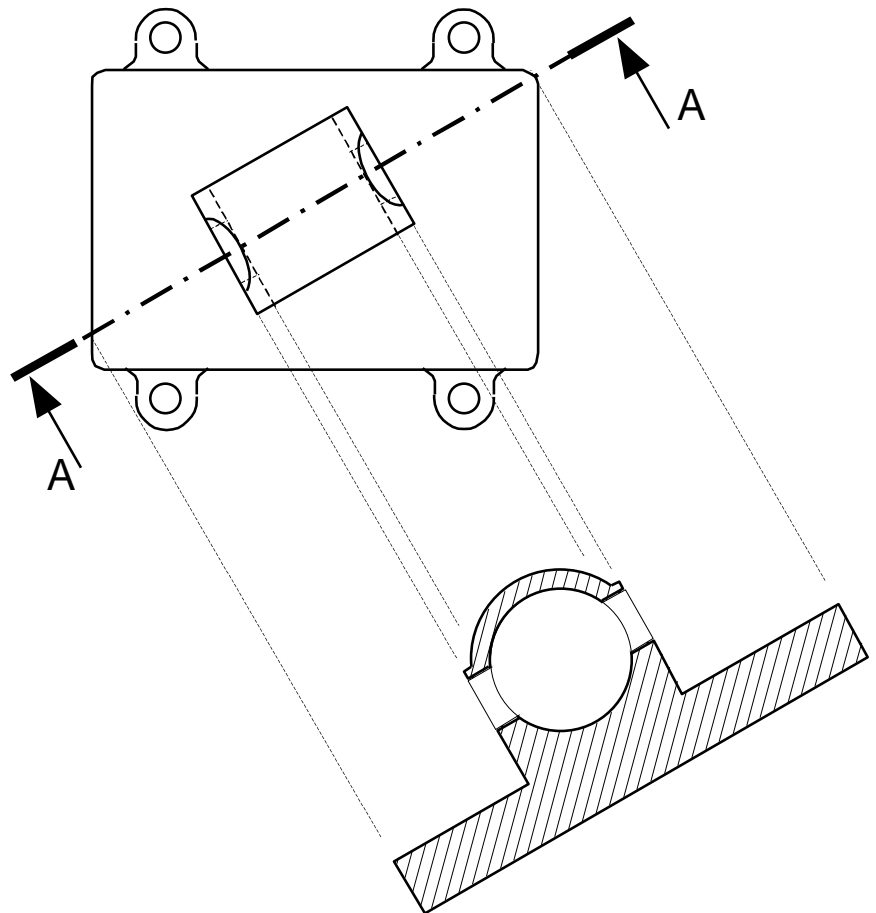
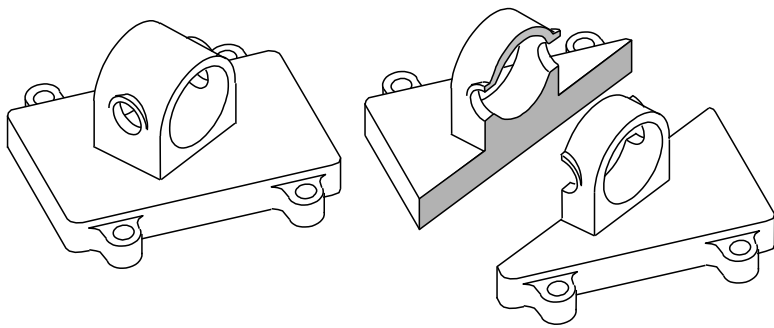
# Corte Parcial



# Corte Parcial



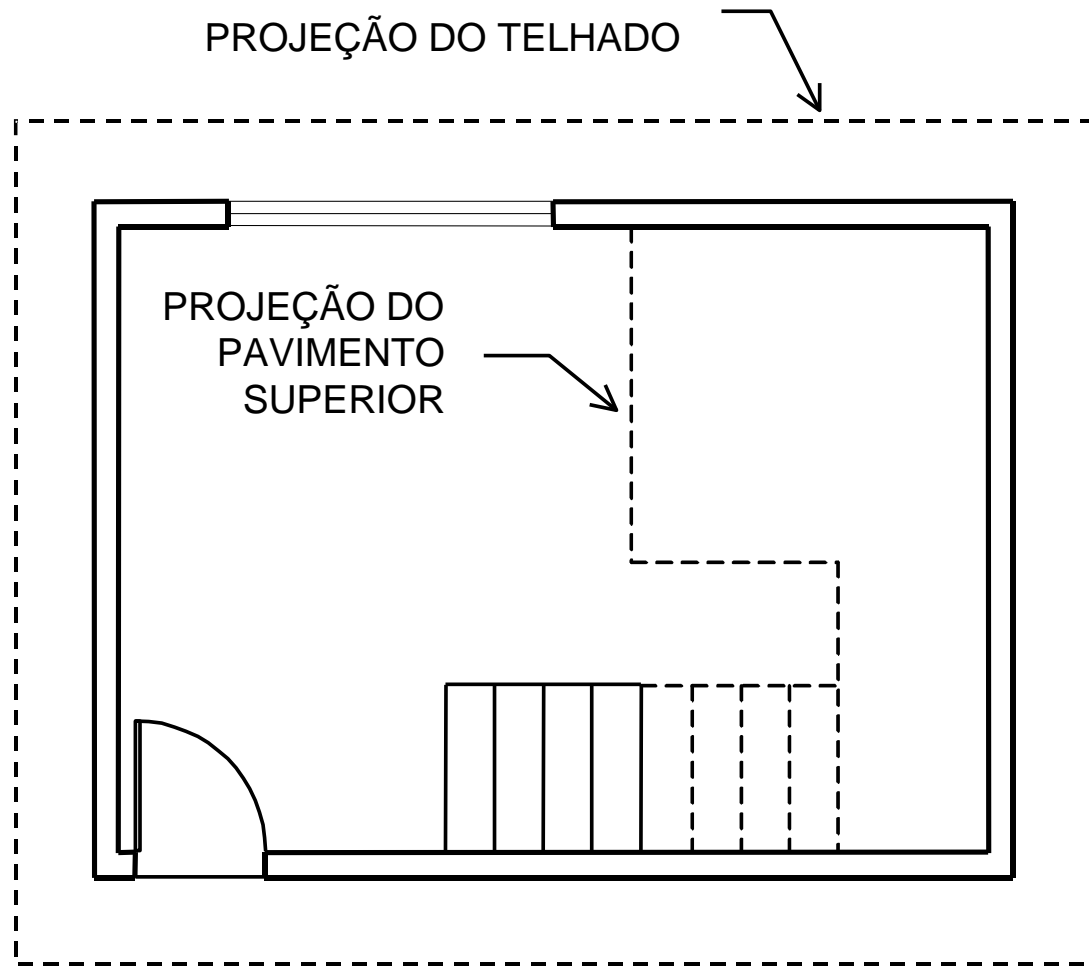
# Corte Auxiliar





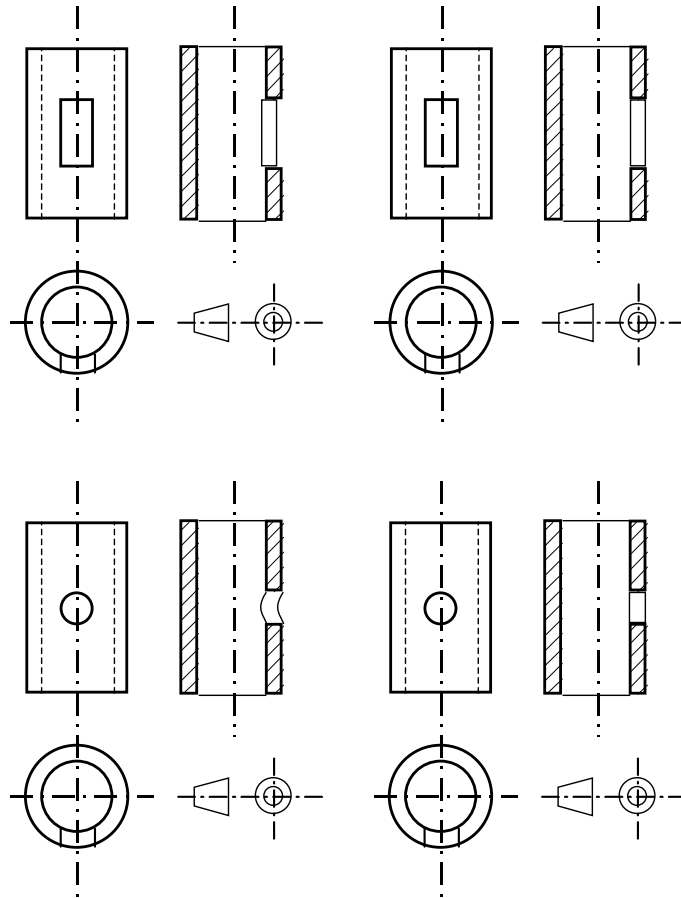
# Corte Fantasma

---





# Representação simplificada



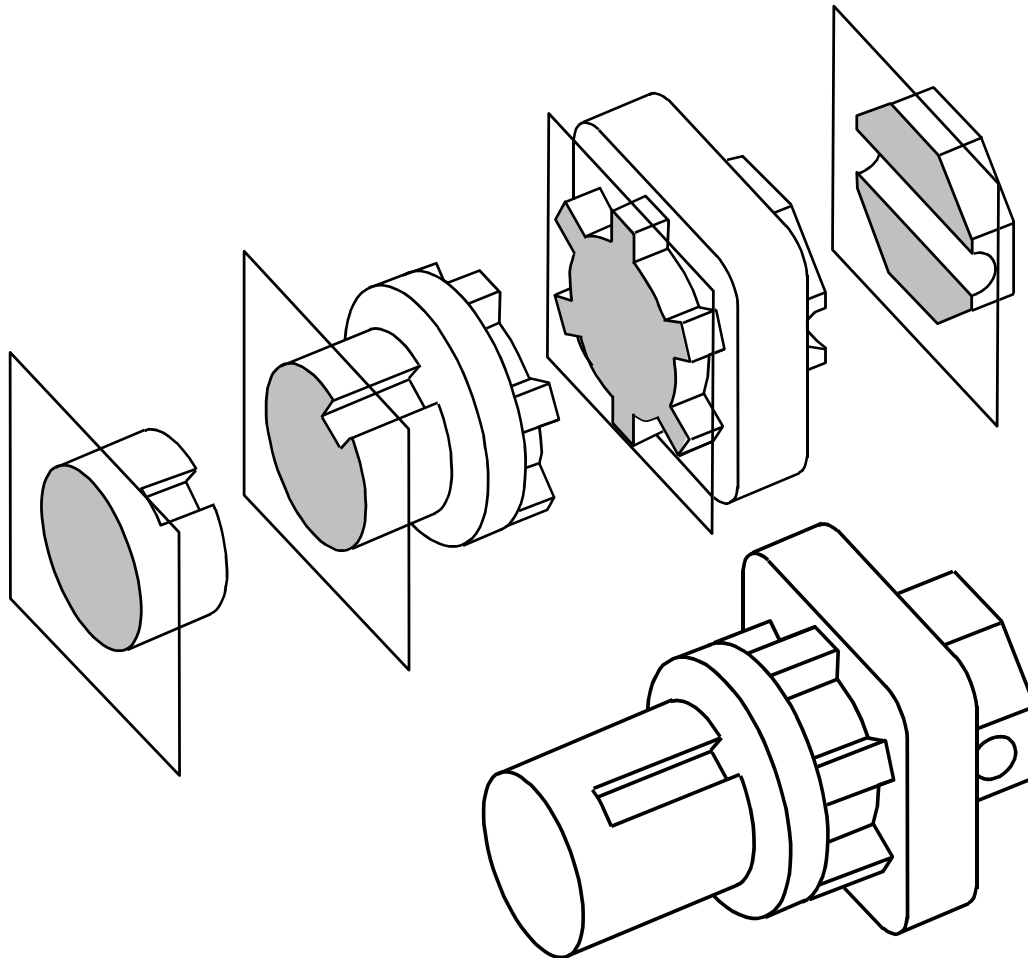


# Peças Interrompidas

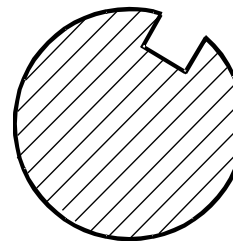
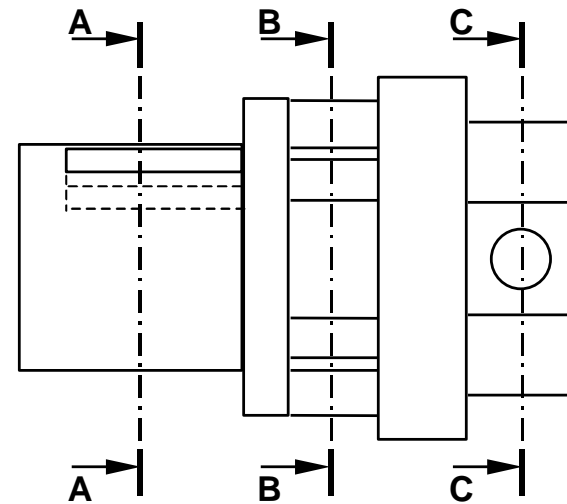
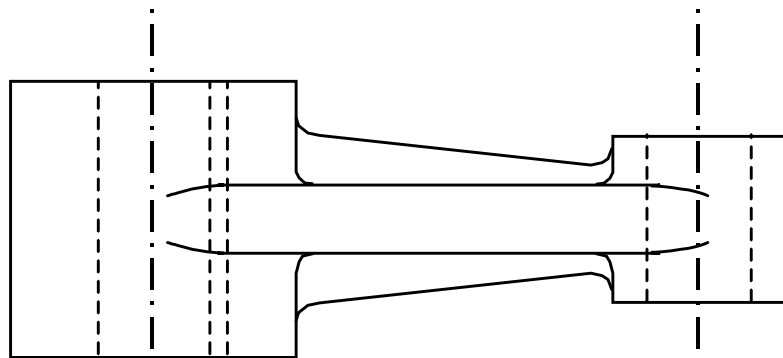
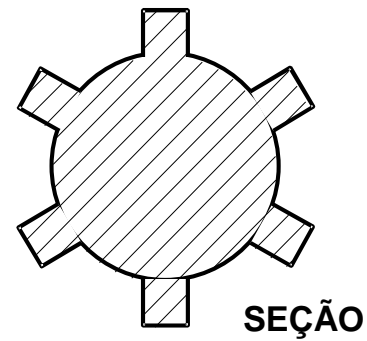
---



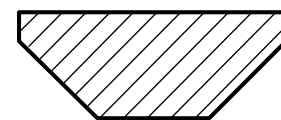
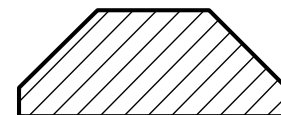
# Seções



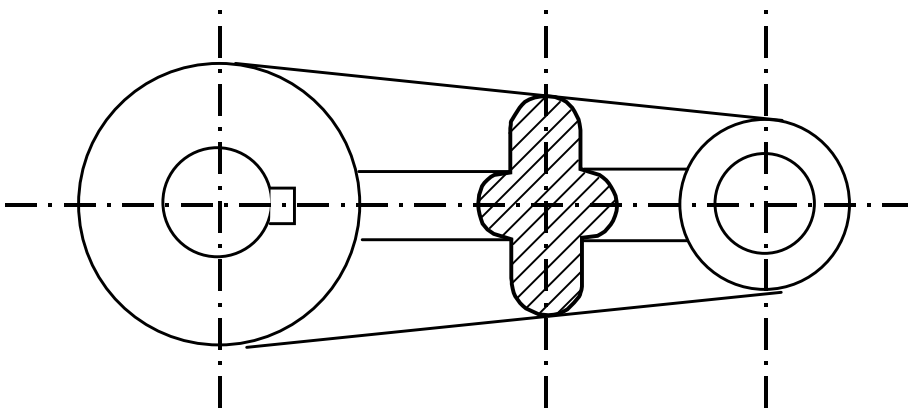
# Seções



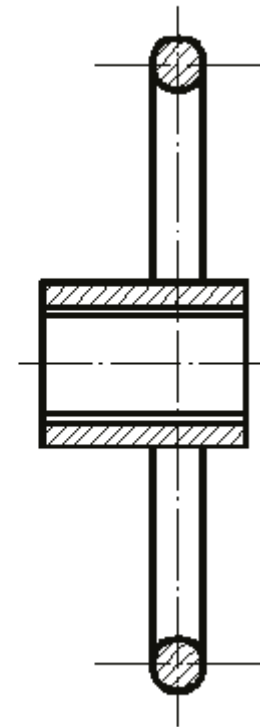
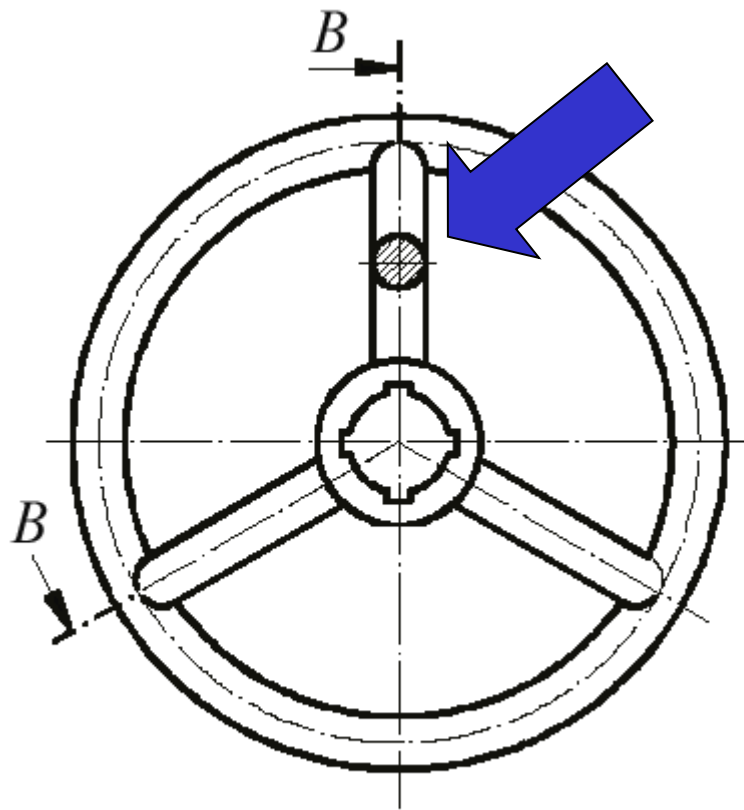
SEÇÃO



SEÇÃO



# Seções



*Corte - BB*

# Seções

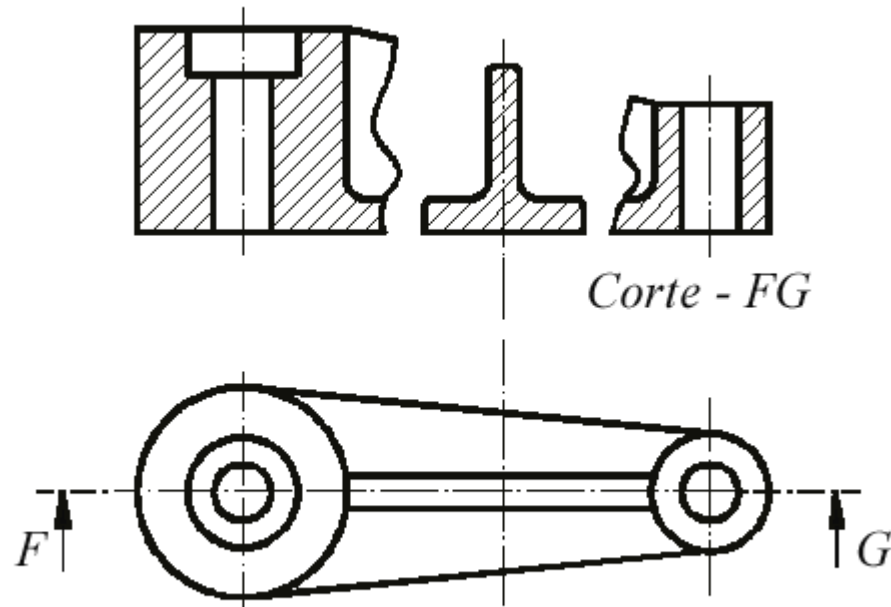
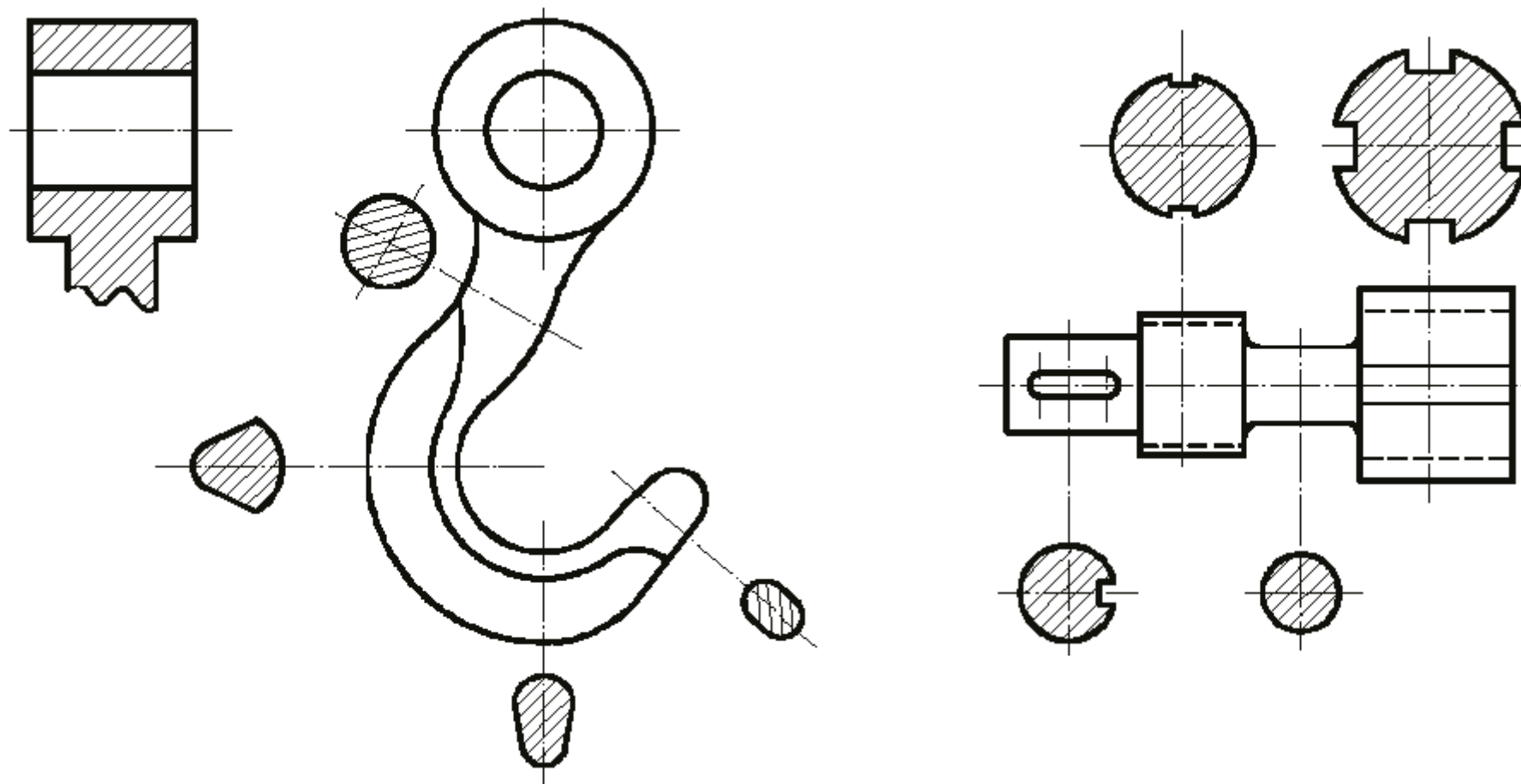


Figura 5.24

# Seções



# Seções

