

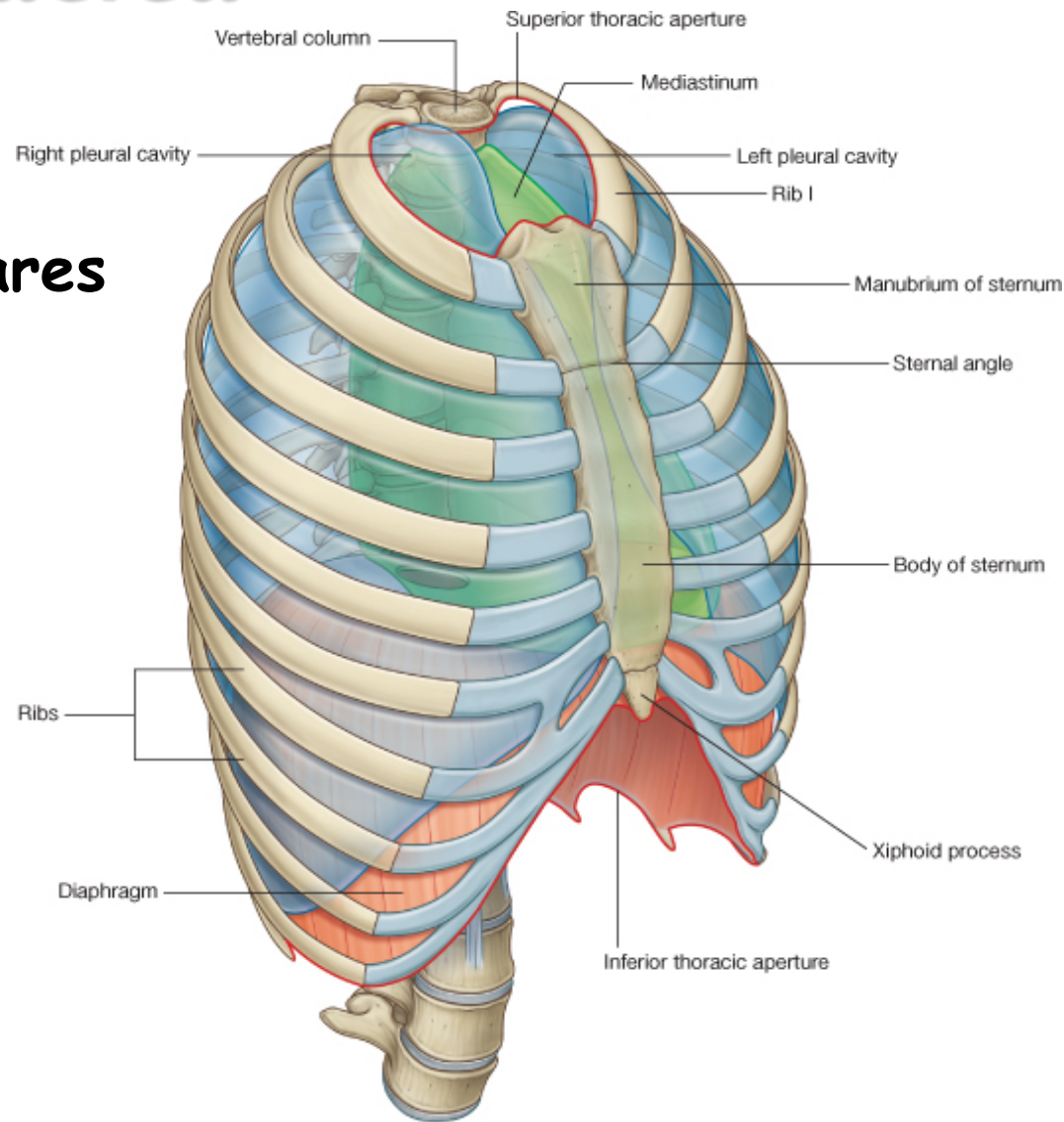
Mediastino Anterior e Superior

Profa. Dra. Valéria Paula Sassoli Fazan
vpsfazan@yahoo.com.br

Cavidade Torácica

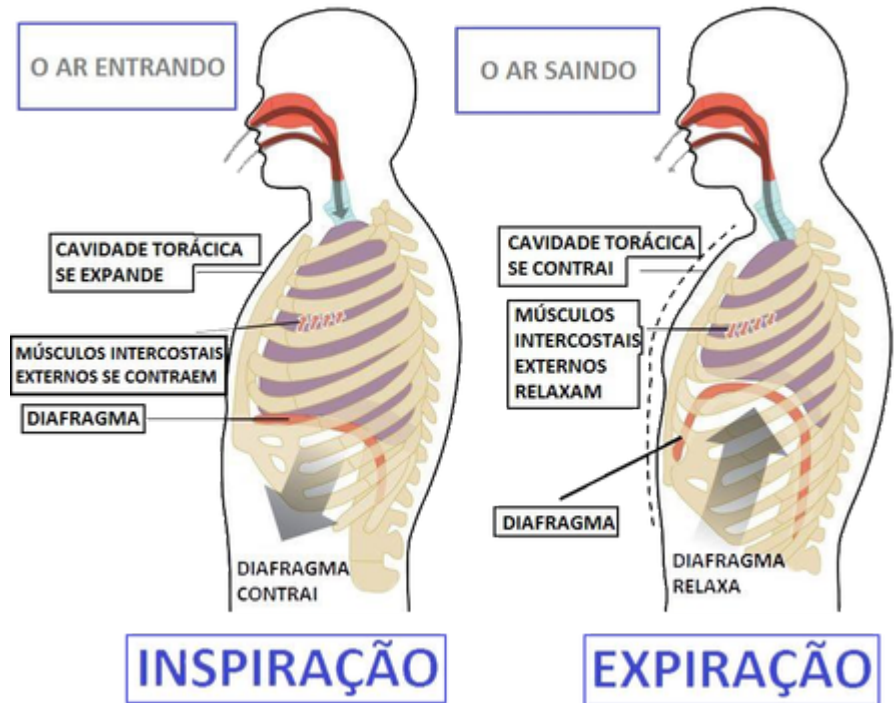
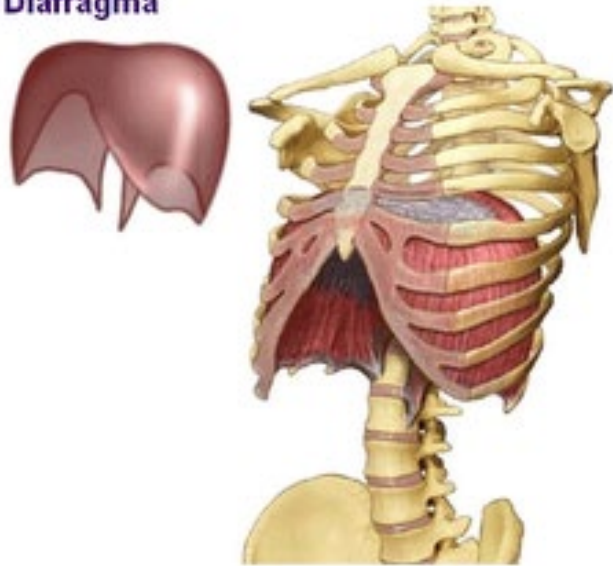
**Cavidades pleuro-pulmonares
direita e esquerda.**

Mediastino

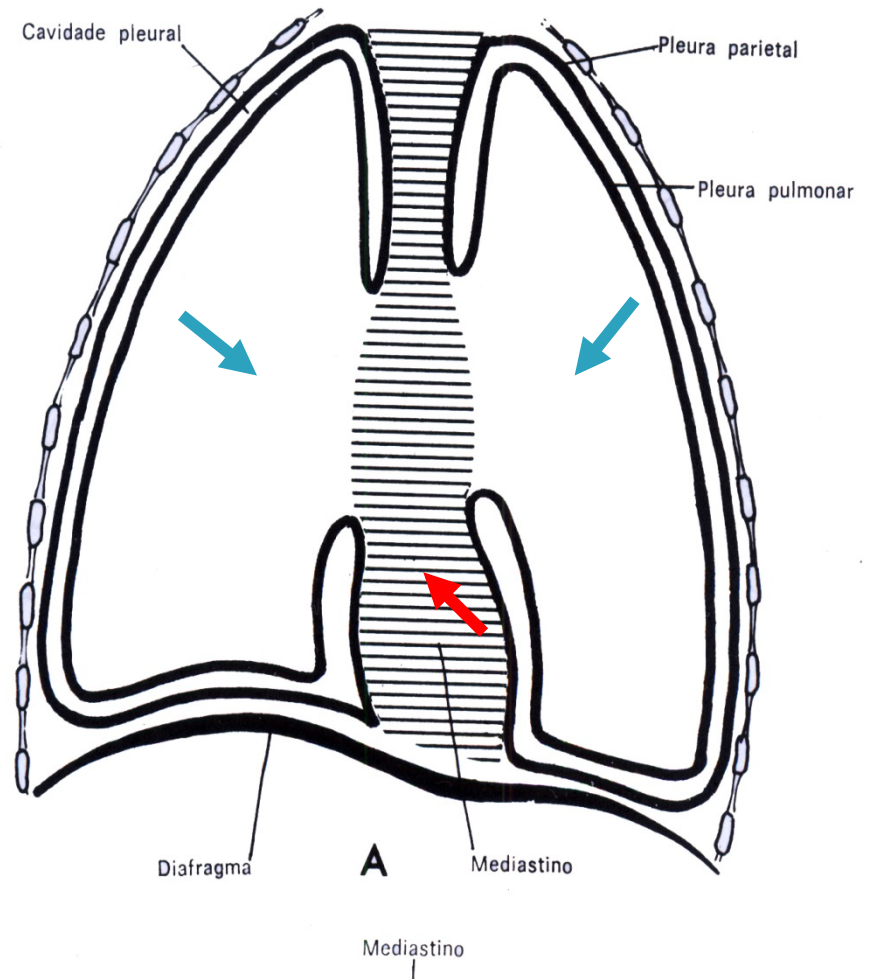
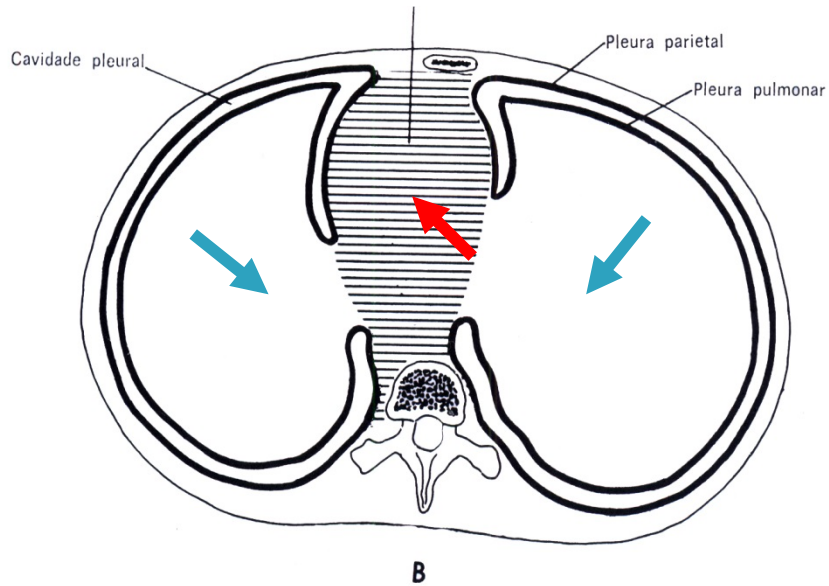


Diafragma de novo!

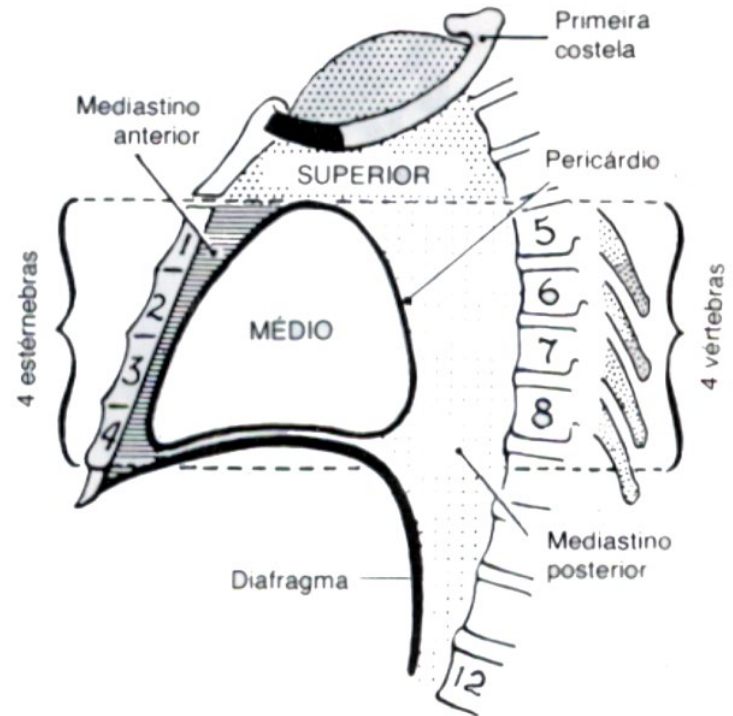
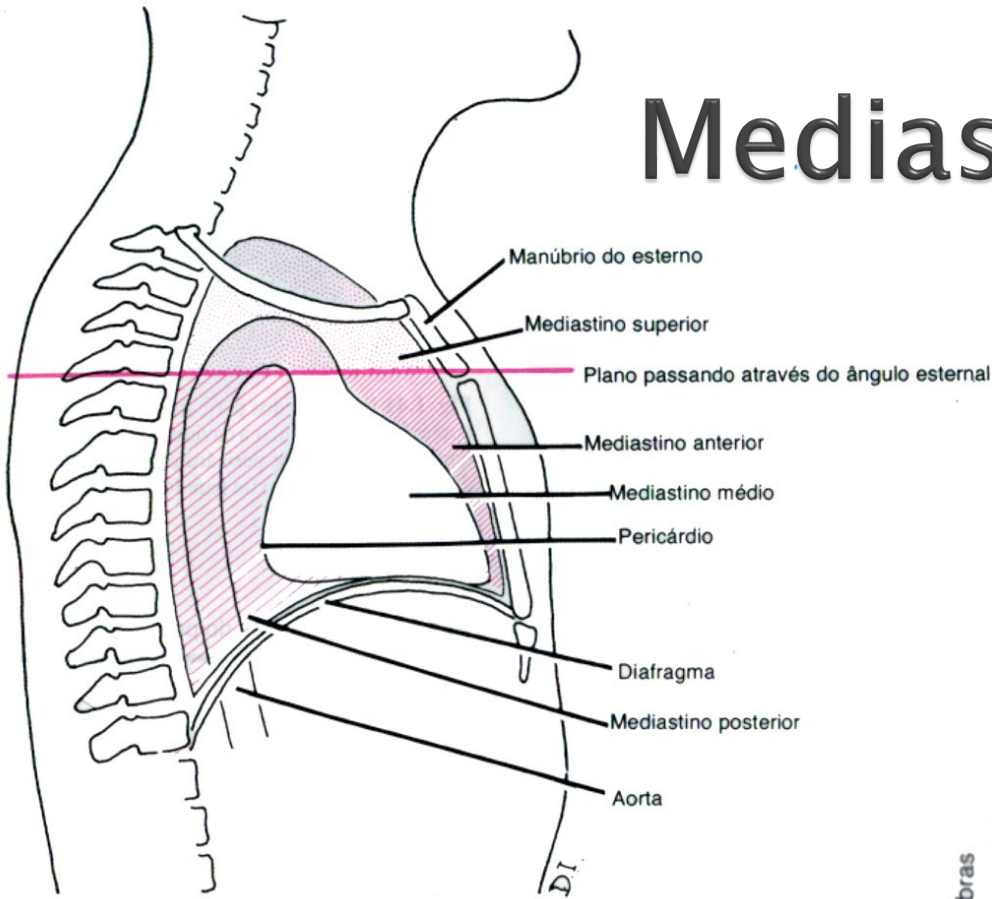
Diafragma

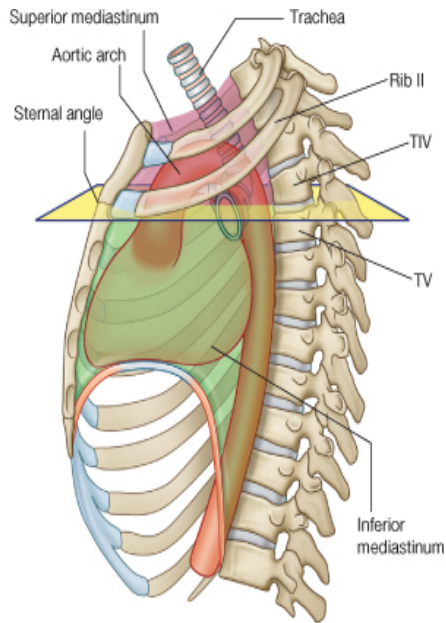


Cavidade Torácica



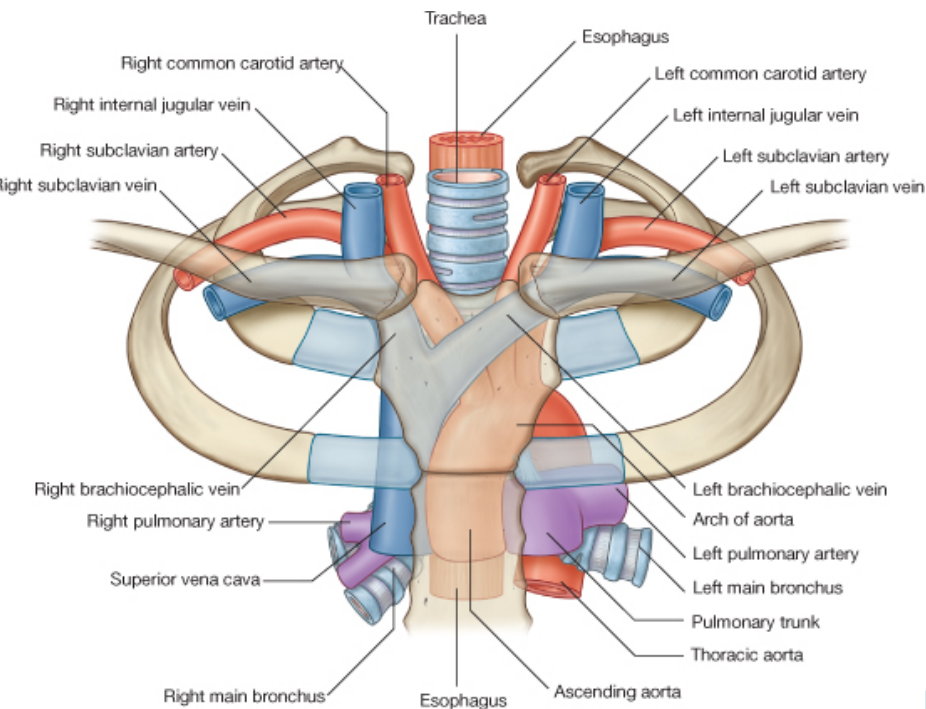
Mediastino – Divisões



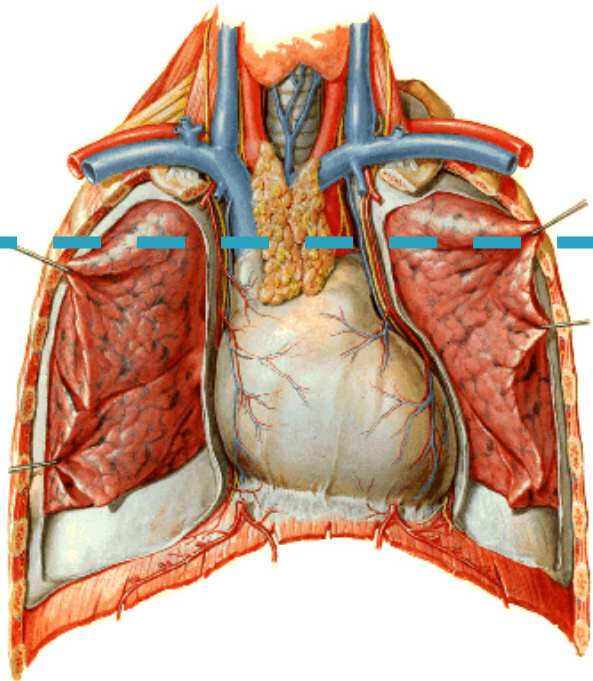


© Elsevier. Drake et al: Gray's Anatomy for Students - www.studentconsult.com

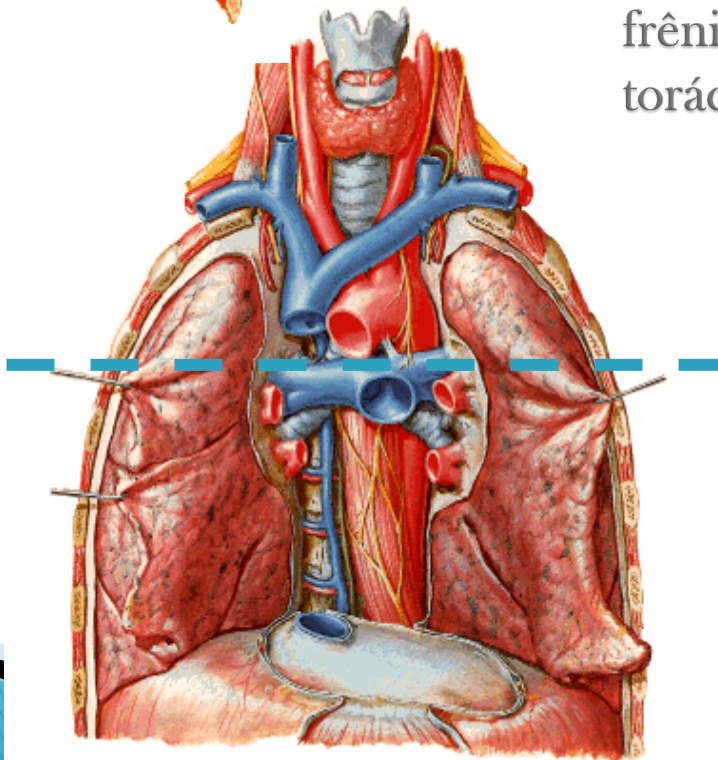
Superior: Timo, veias braquiocéfálicas, veia cava superior, arco da aorta, ramos do arco da aorta, vasos torácicos internos, ligamento arterioso, nervo vago e seu ramo laríngeo recorrente, nervo frênico, vasos pericardiofrênicos, ducto torácico, traquéia e esôfago.

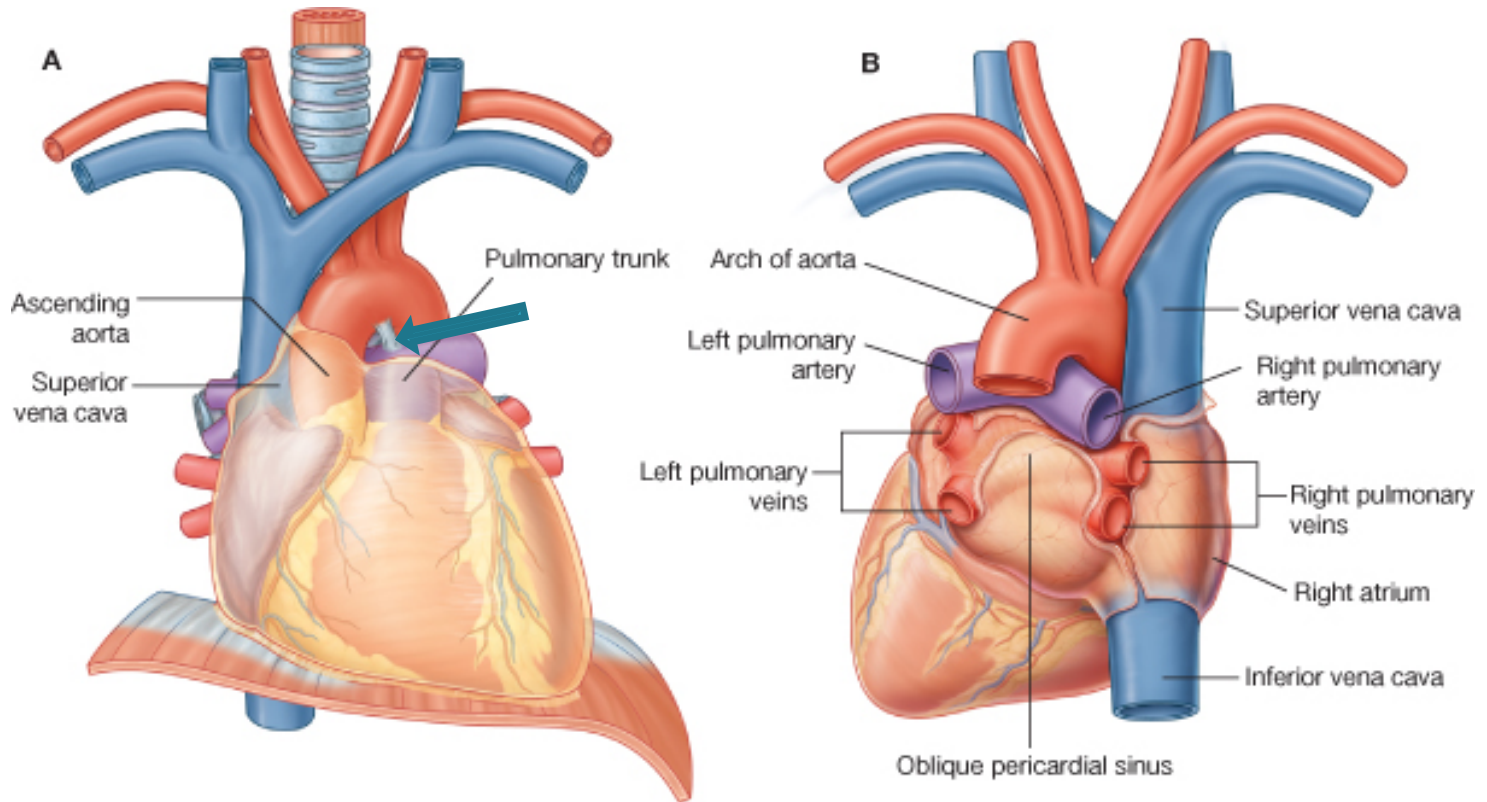


© Elsevier. Drake et al: Gray's Anatomy for Students - www.studentconsult.com



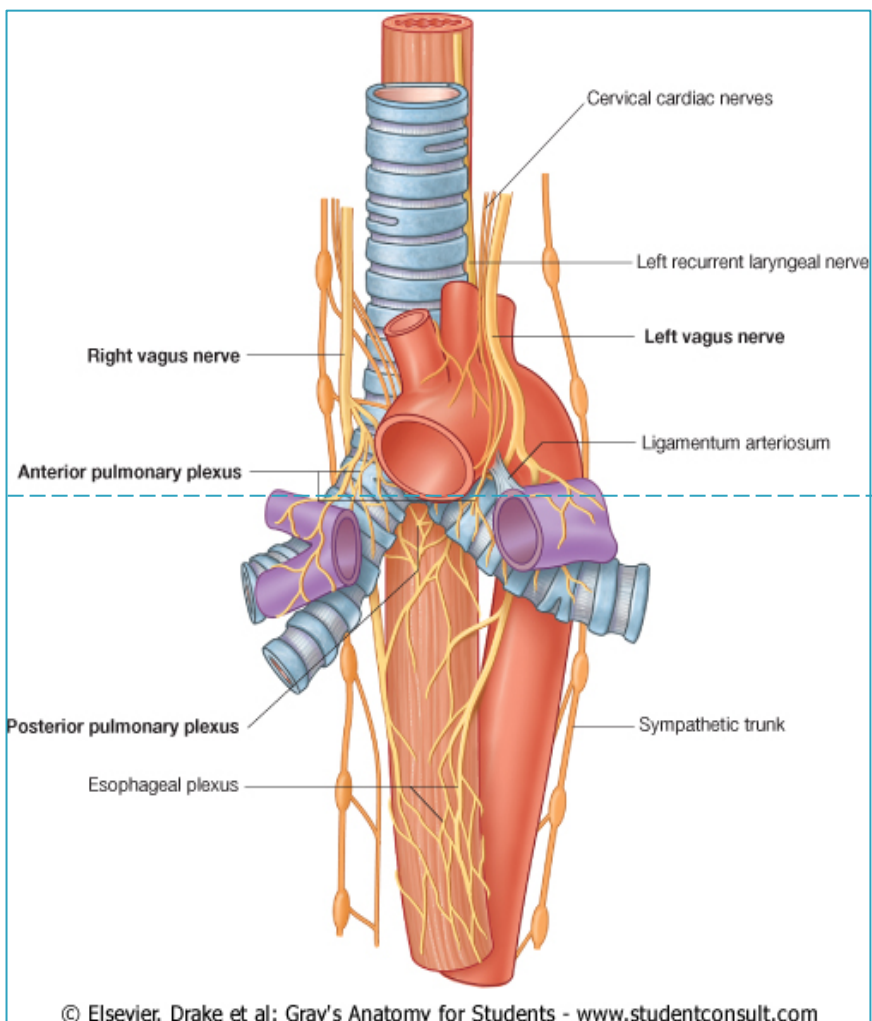
Superior: Timo, veias braquiocefálicas, veia cava superior, arco da aorta, ramos do arco da aorta, vasos torácicos internos, ligamento arterioso, nervo vago e seu ramo laríngeo recorrente, nervo frênico, vasos pericardicofrênicos, ducto torácico, traquéia e esôfago.



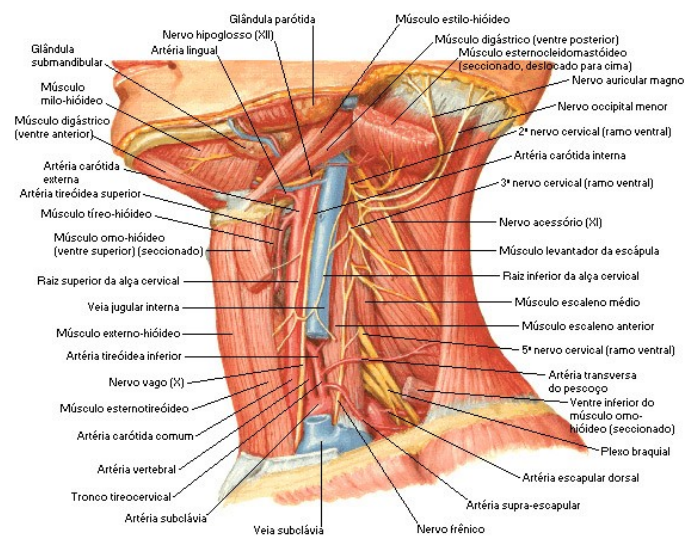


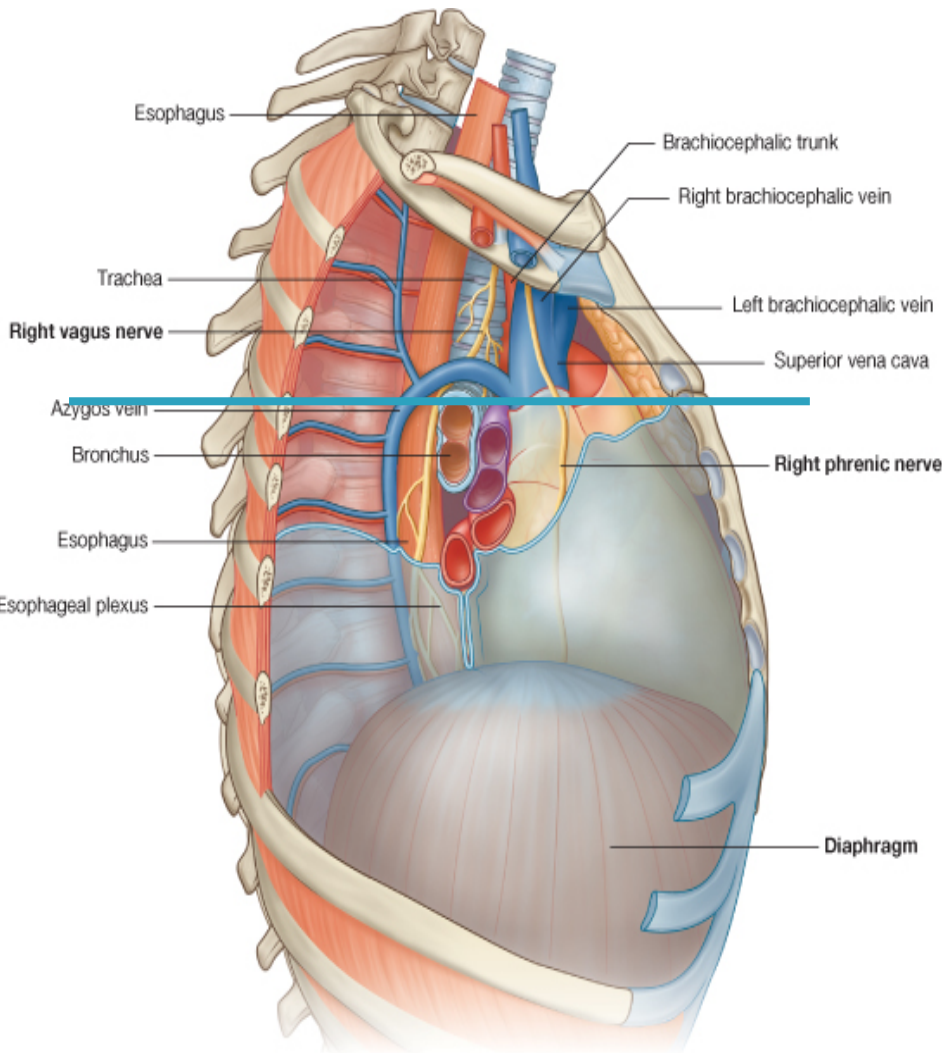
© Elsevier. Drake et al: Gray's Anatomy for Students - www.studentconsult.com

Superior: Timo, veias braquiocefálicas, veia cava superior, arco da aorta, ramos do arco da aorta, vasos torácicos internos, ligamento arterioso, nervo vago e seu ramo laríngeo recorrente, nervo frênico, vasos pericardicofrênicos, ducto torácico, traquéia e esôfago.



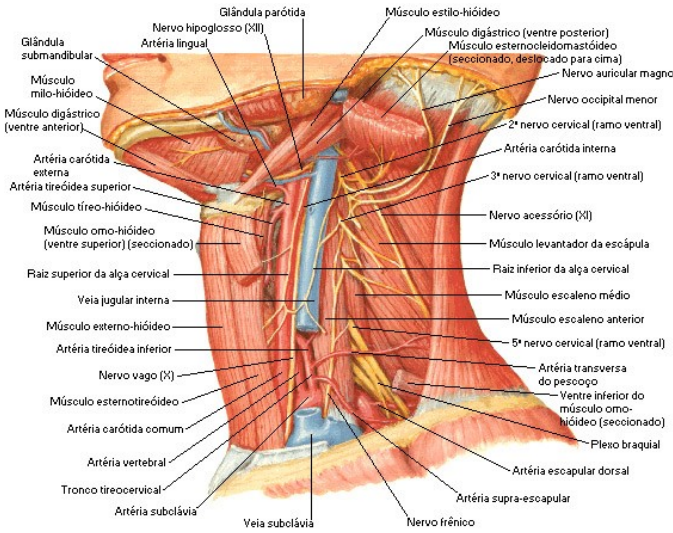
Superior: Timo, veias braquiocefálicas, veia cava superior, arco da aorta, ramos do arco da aorta, vasos torácicos internos, ligamento arterioso, nervo vago e seu ramo laríngeo recorrente, nervo frênico, vasos pericardiofrênicos, ducto torácico, traquéia e esôfago.

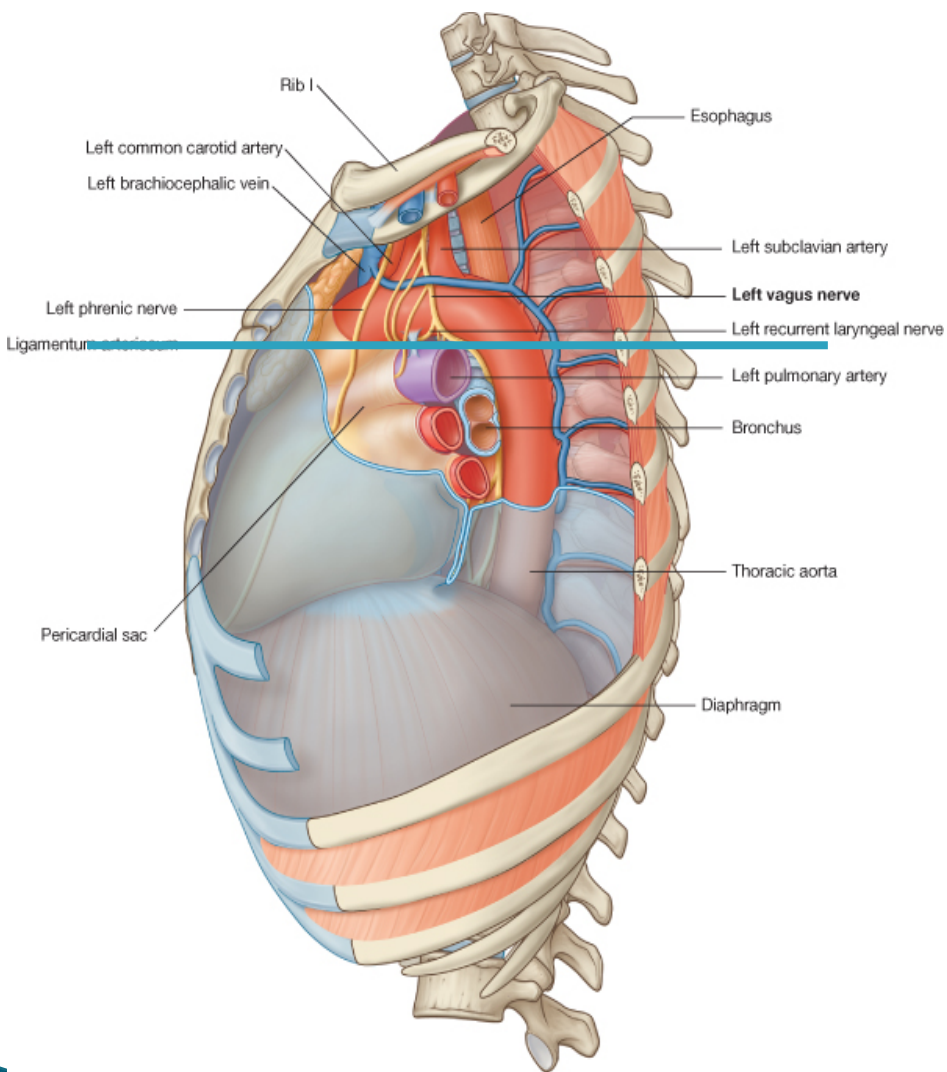




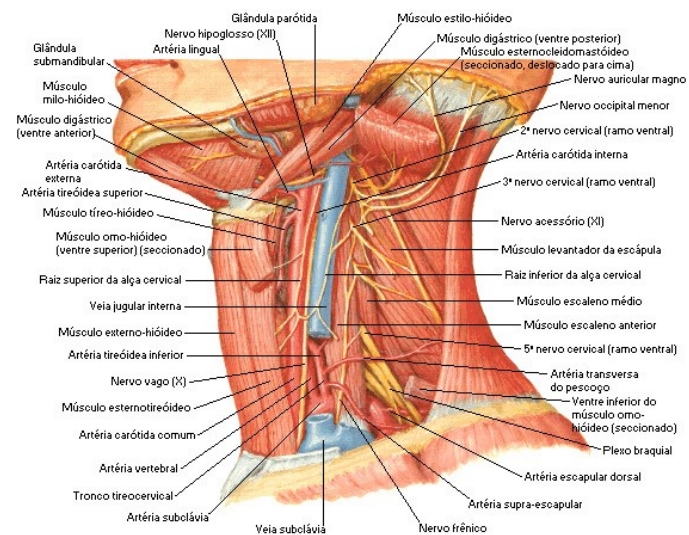
Superior: Timo, veias braquiocefálicas, veia cava superior, arco da aorta, ramos do arco da aorta, vasos torácicos internos, ligamento arterioso, nervo vago e seu ramo laríngeo recorrente, nervo frênico, vasos pericardicofrênicos, ducto torácico, traquéia e esôfago.

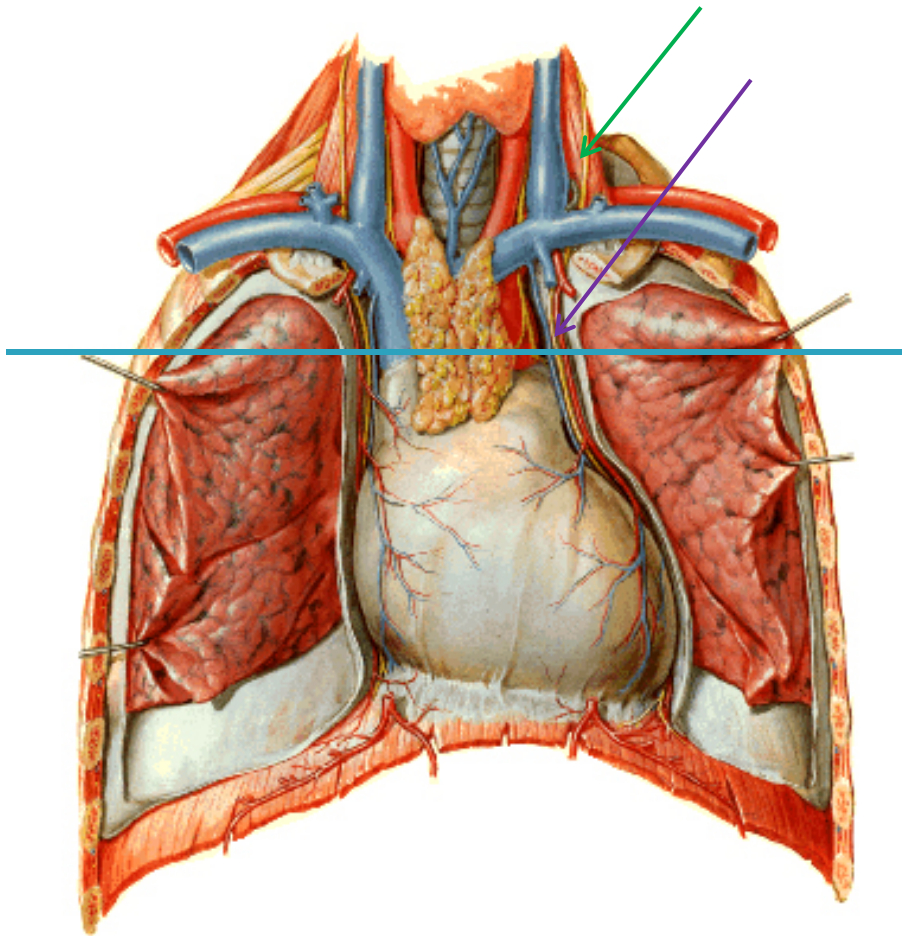
© Elsevier. Drake et al: Gray's Anatomy for Students - www.studentconsult.com





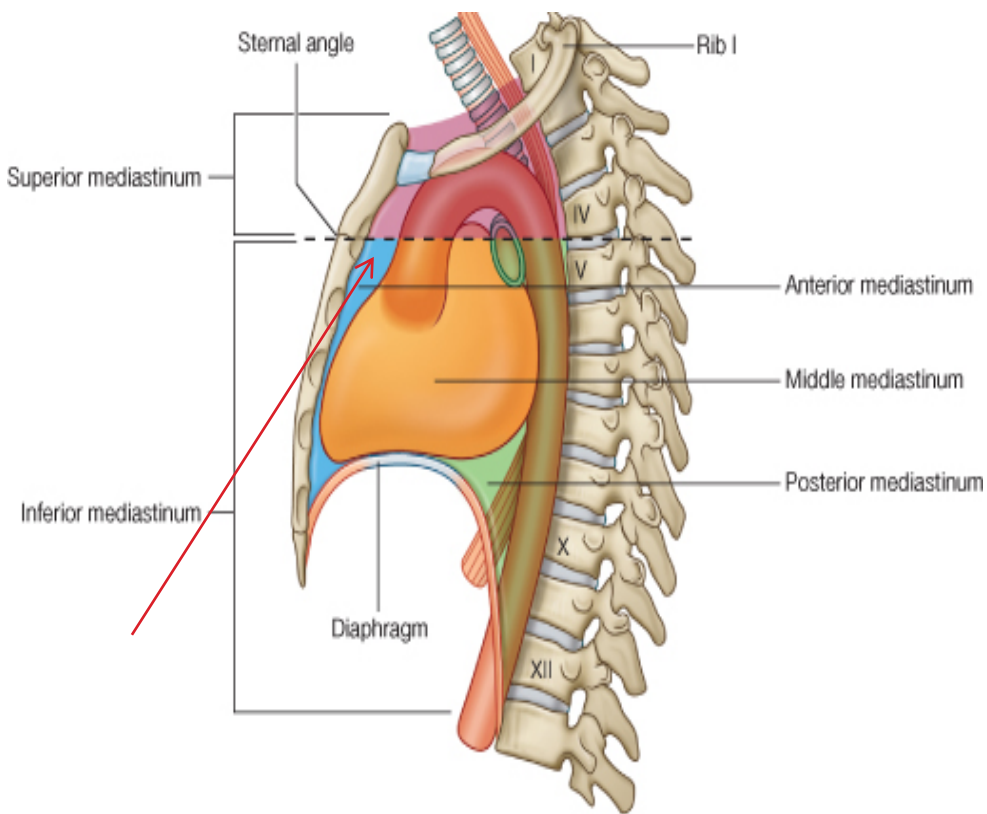
Superior: Timo, veias braquiocefálicas, veia cava superior, arco da aorta, ramos do arco da aorta, vasos torácicos internos, ligamento arterioso, nervo vago e seu ramo laríngeo recorrente, nervo frênico, vasos pericardicofrênicos, ducto torácico, traquéia e esôfago.





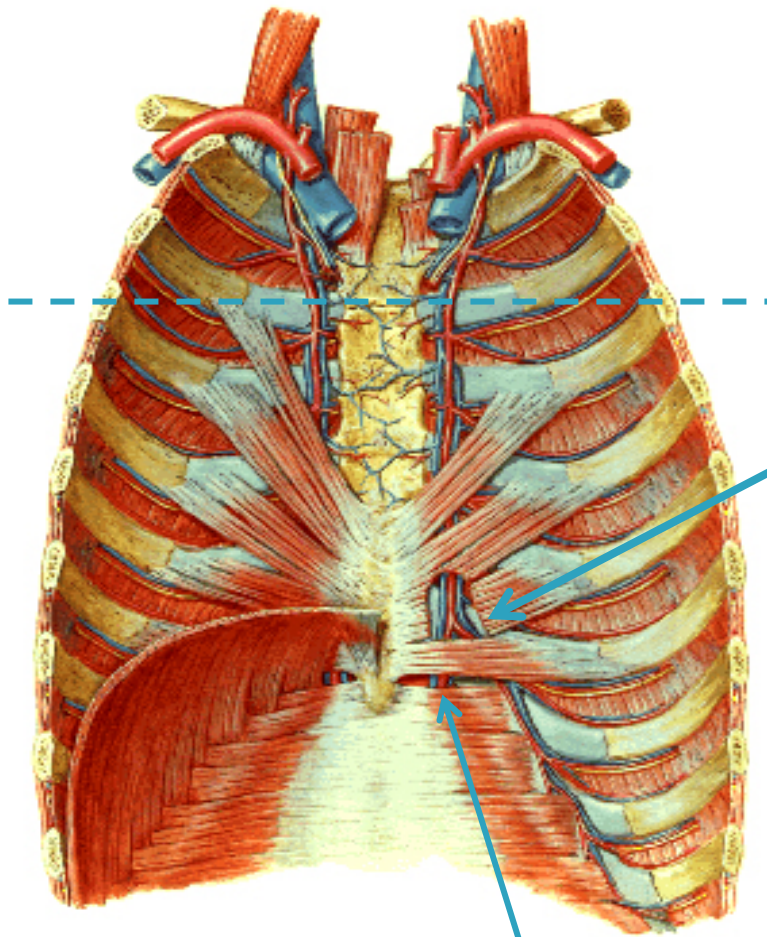
Superior: Timo, veias braquiocefálicas, veia cava superior, arco da aorta, ramos do arco da aorta, vasos torácicos internos, ligamento arterioso, nervo vago e seu ramo laríngeo recorrente, nervo frênico, vasos pericardicofrênicos, ducto torácico, traquéia e esôfago.

Anterior: Timo, artérias e veias torácicas internas, ramos intercostais anteriores, ramos perforantes, ramos mediais, ramos terminais, ligamento pericardicofrênico, ligamento esterno-pericárdico, tecido adiposo, linfonodos.



© Elsevier. Drake et al: Gray's Anatomy for Students - www.studentconsult.com

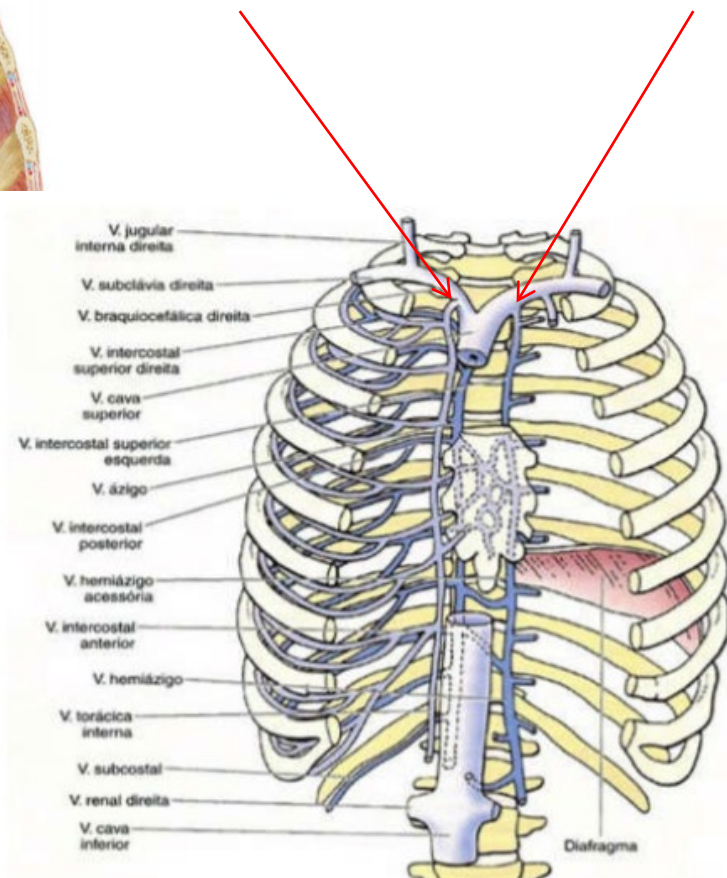
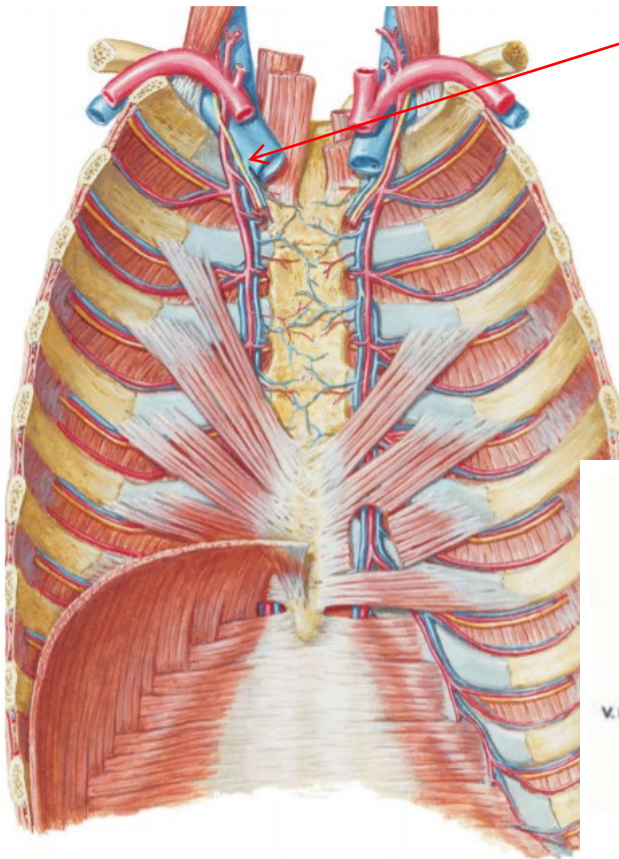
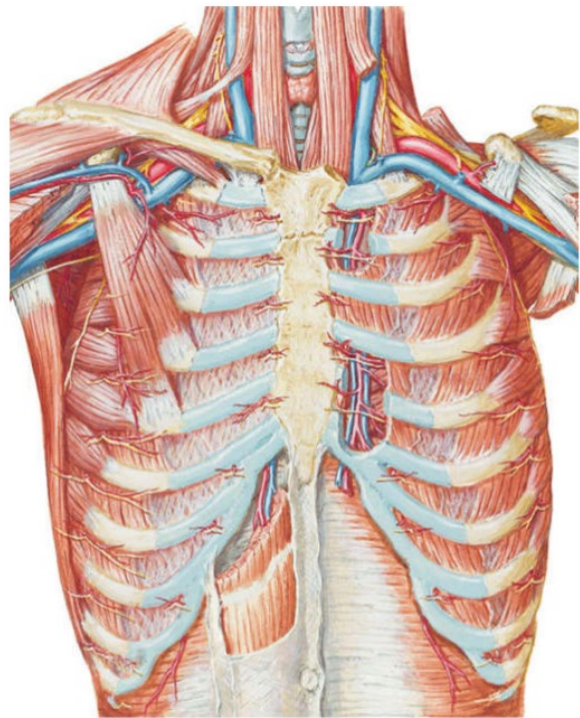
Anterior: Timo, artérias e veias torácicas internas, ramos intercostais anteriores, ramos perfurantes, ramos mediais, ramos terminais, ligamento pericardiofrênico, ligamento esterno-pericárdico, tecido adiposo, linfonodos.

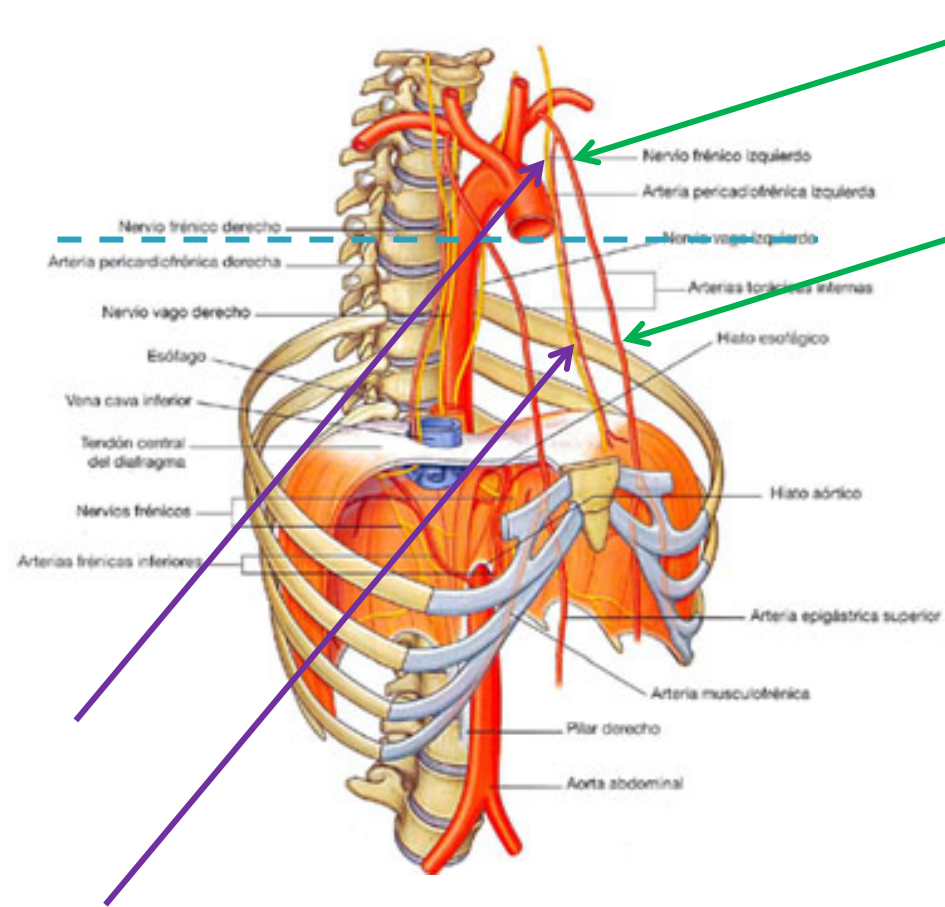


Artéria musculofrênica

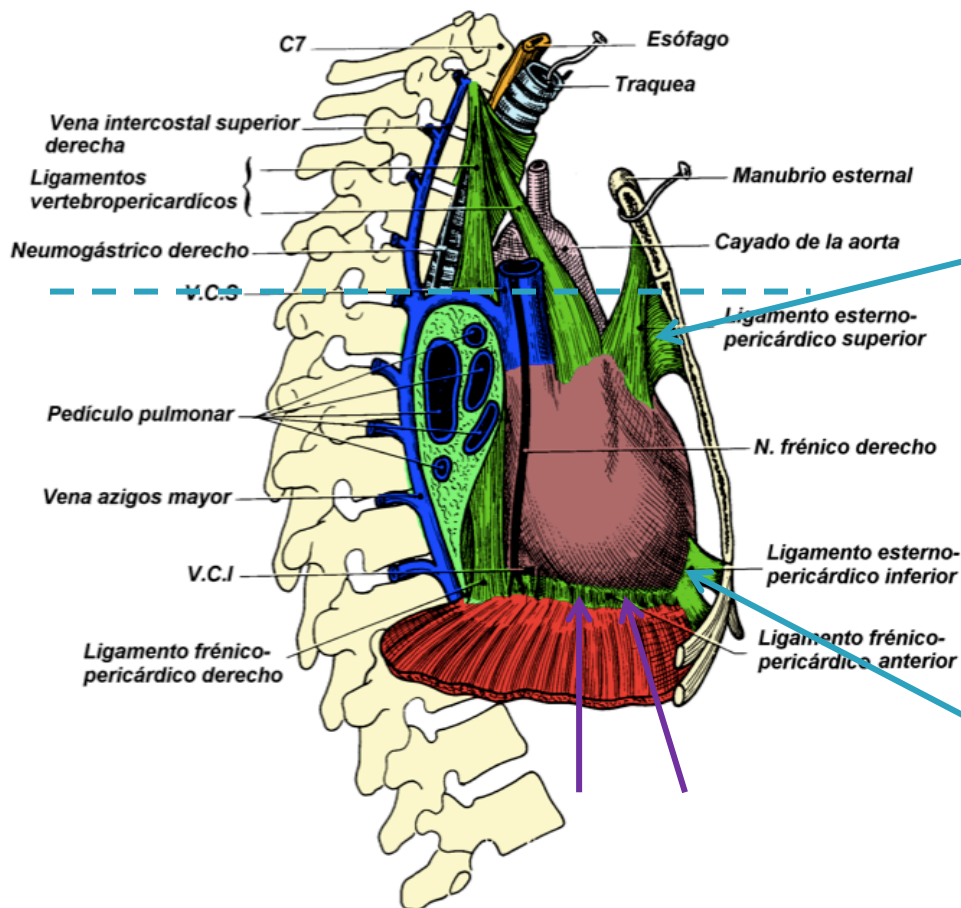
Anterior: Timo, artérias e veias torácicas internas, ramos intercostais anteriores, ramos perforantes, ramos mediais, ramos terminais, ligamento pericardicofrênico, ligamento esterno-pericárdico, tecido adiposo, linfonodos.

Artéria epigástrica superior





Anterior: Timo, **artérias** e veias torácicas internas, ramos intercostais anteriores, ramos perforantes, ramos mediais, ramos terminais, ligamento pericardiofrênico, ligamento esterno-pericárdico, tecido adiposo, linfonodos.



Anterior: Timo, artérias e veias torácicas internas, ramos intercostais anteriores, ramos perforantes, ramos terminais, ligamento **pericardiofrênico**, ligamento **esterno-pericárdico**, tecido adiposo, linfonodos.

Obrigada!

