

AGA 0100 4.1

Aglomerados e populações estelares

M 3

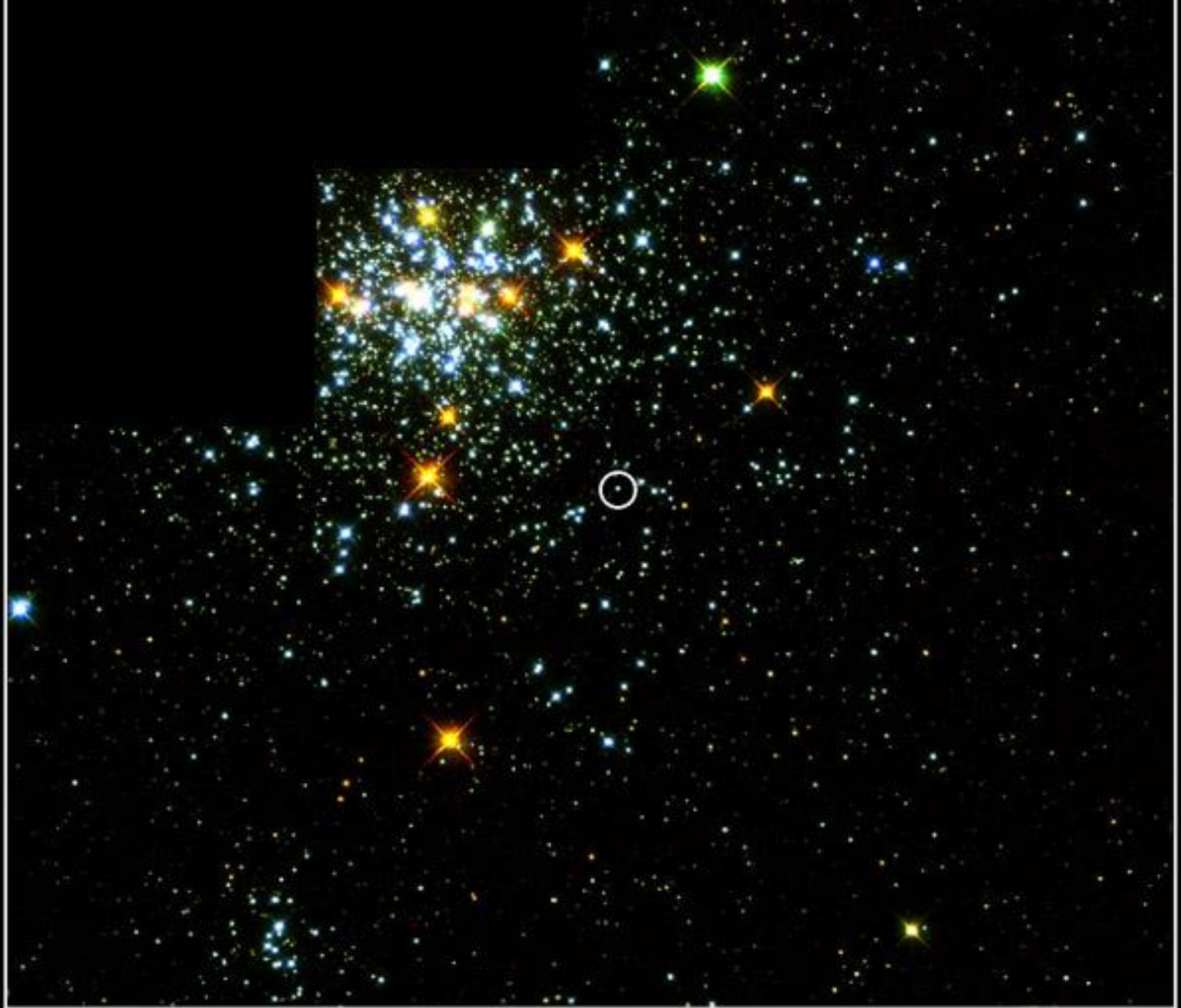


M 68



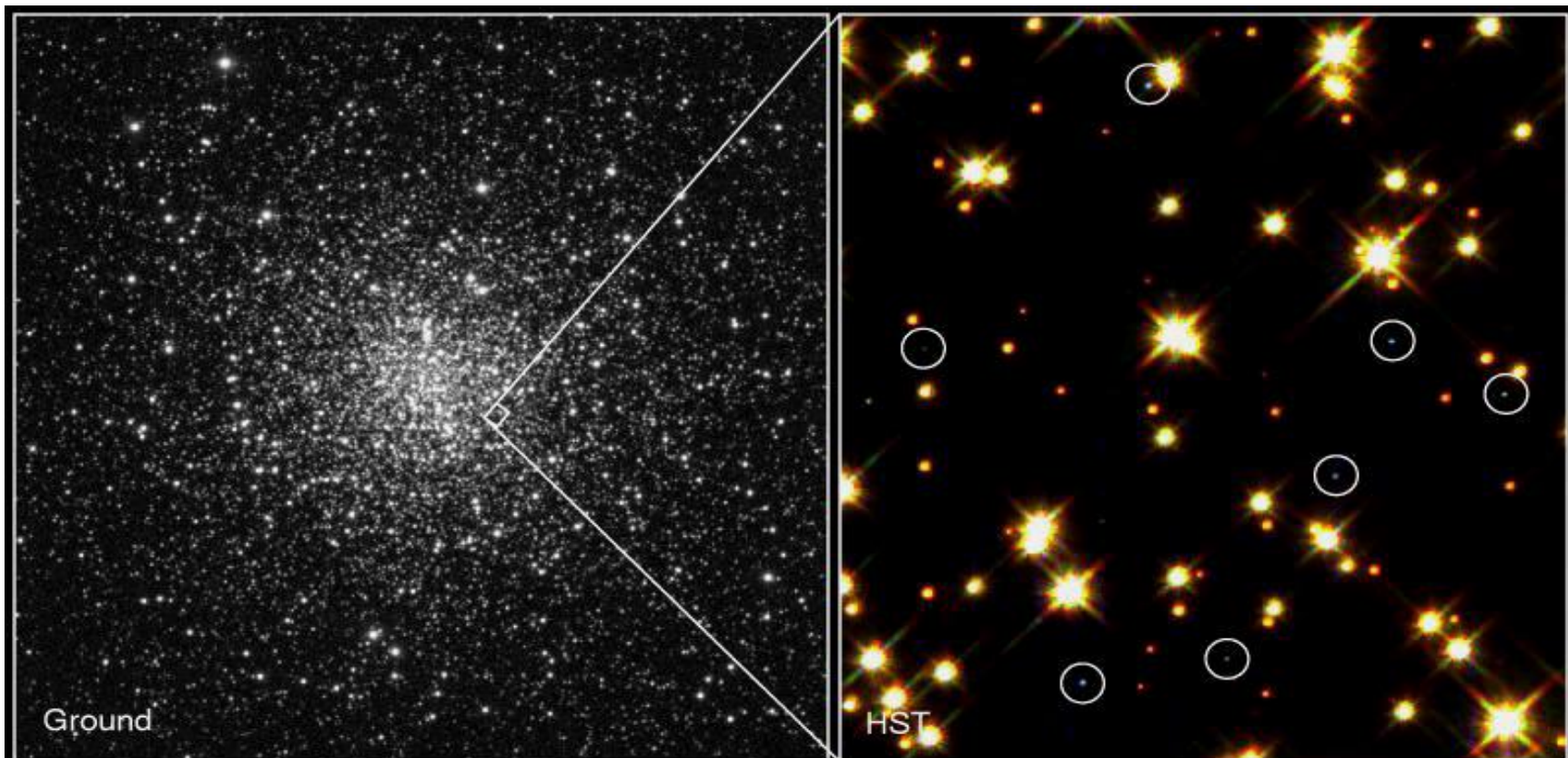
Plêiades





**Globular Cluster NGC 1818
in the Large Magellanic Cloud**

HST • WFPC2



White Dwarf Stars in M4

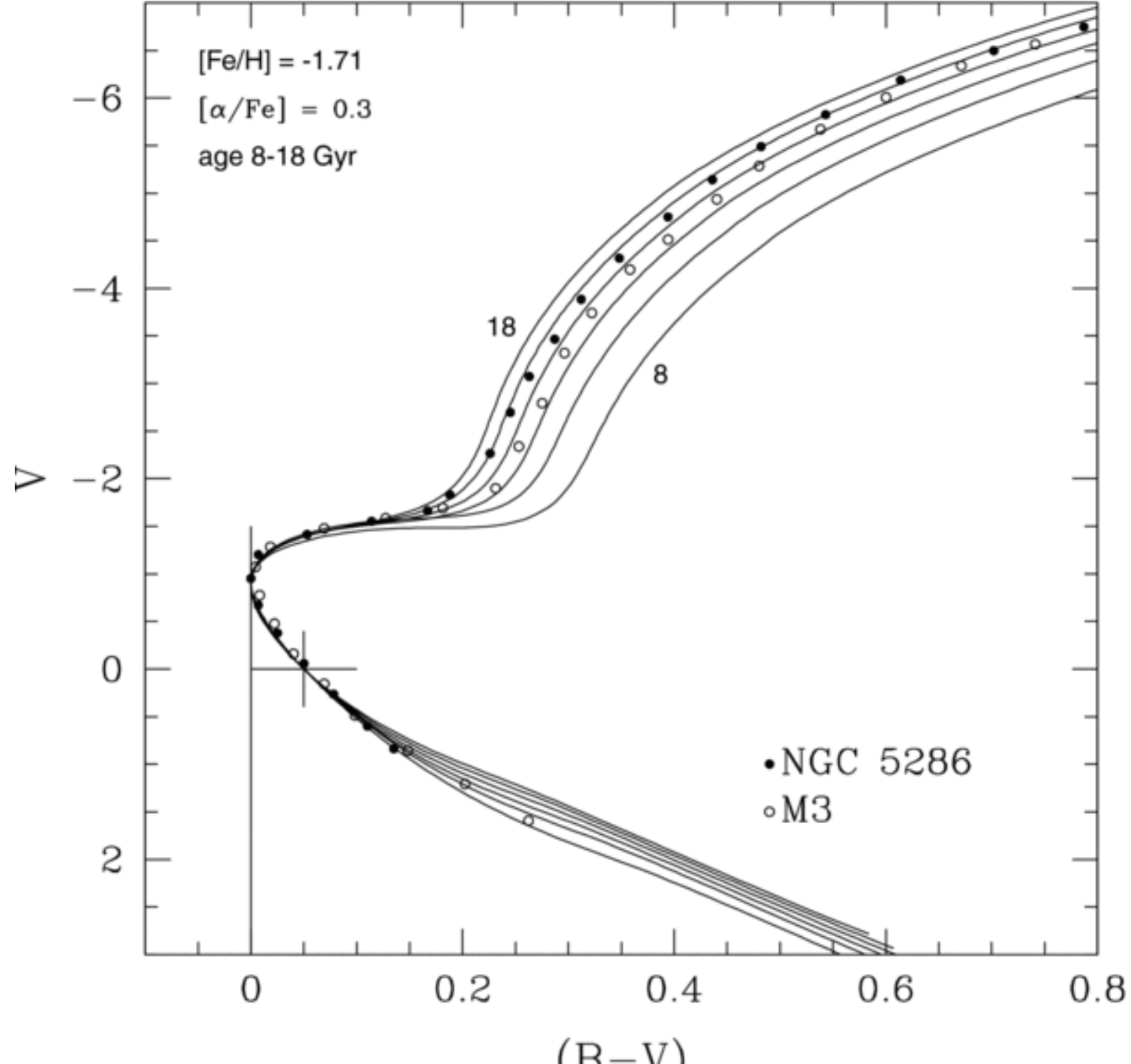
HST · WFPC2

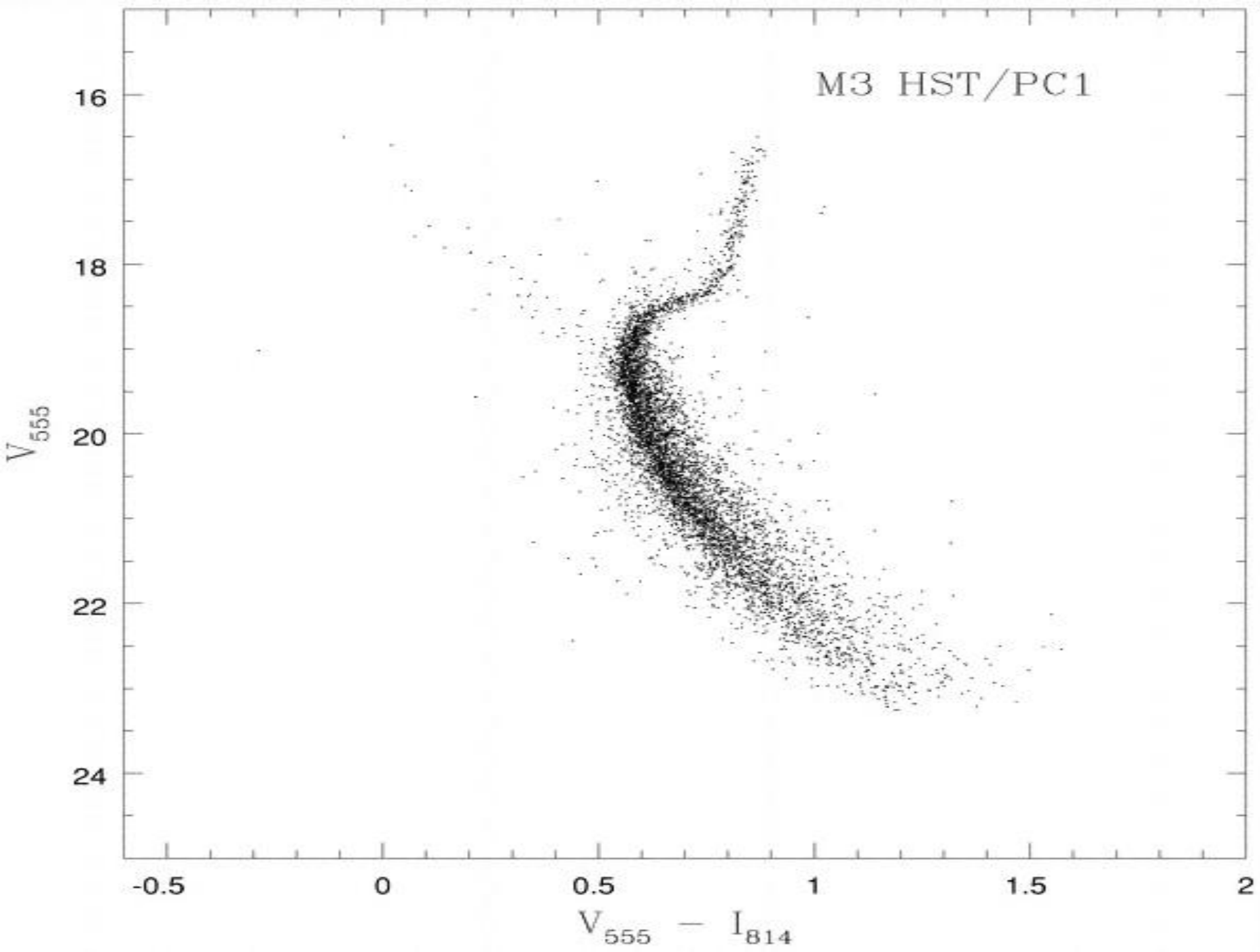
PRC95-32 · ST ScI OPO · August 28, 1995 · H. Bond (ST ScI), NASA

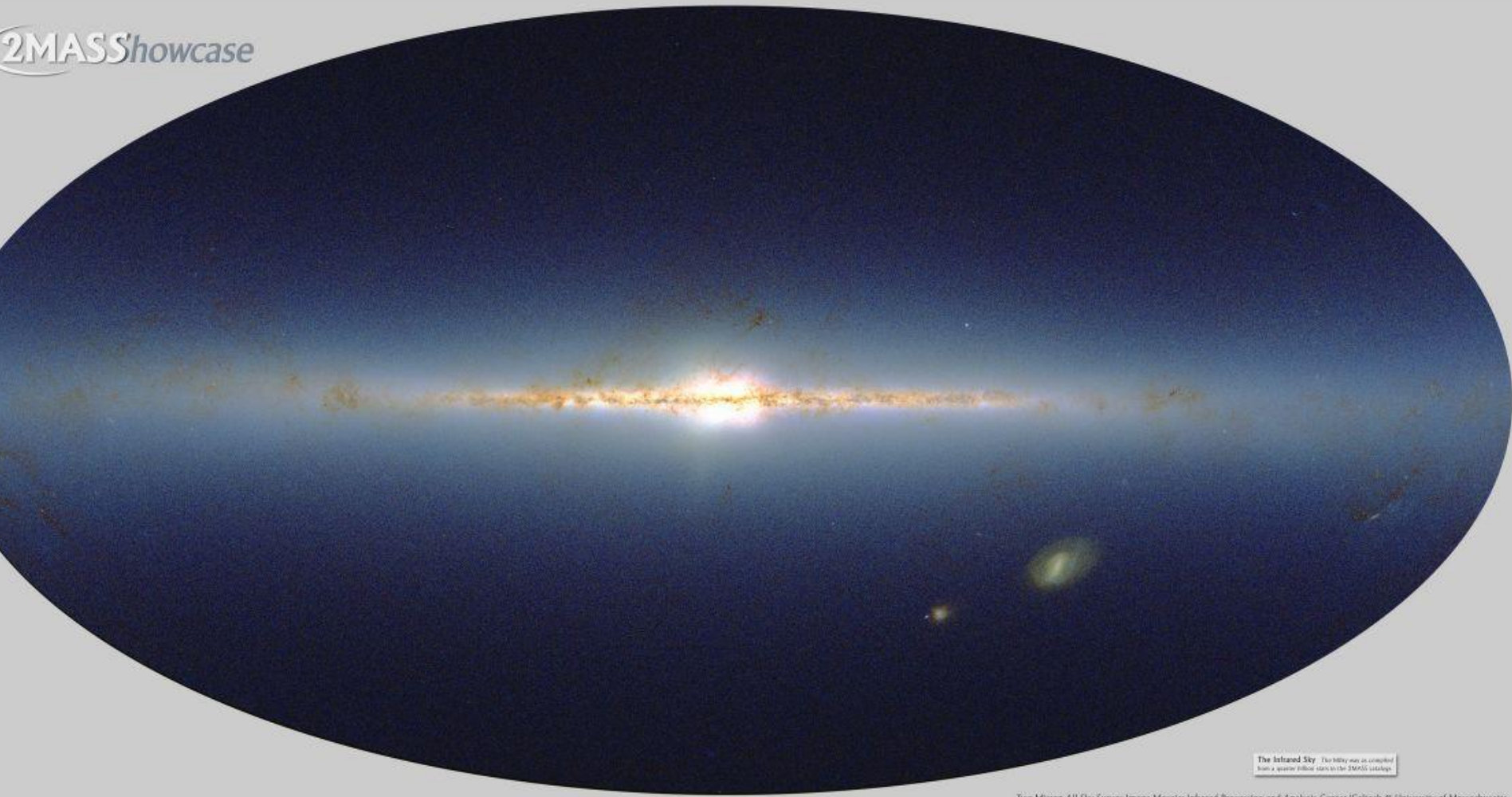










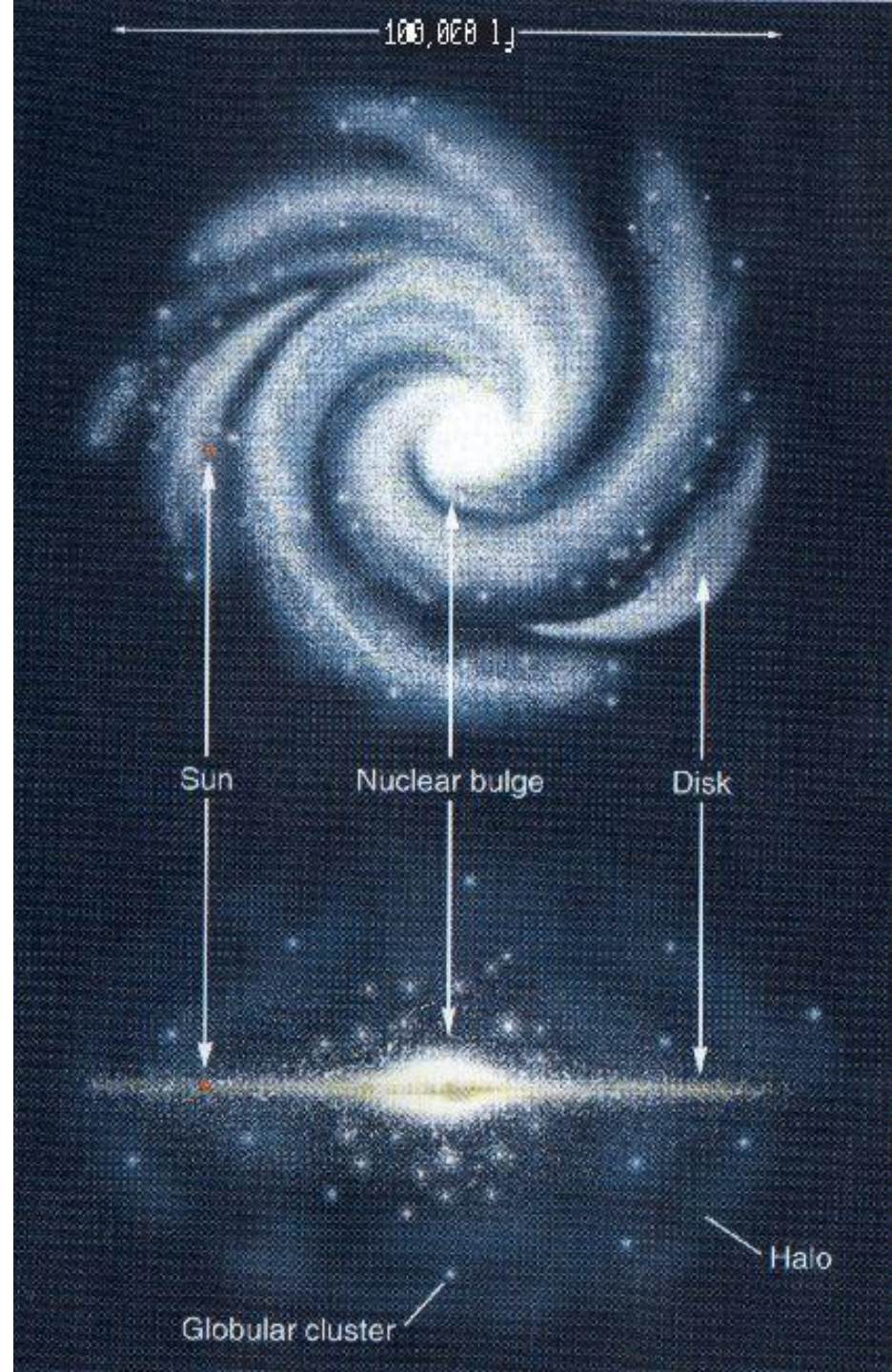


The Infrared Sky The Milky Way as compiled from a quarter billion stars in the 2MASS catalog.



A Via Láctea e seus componentes (Shapley)

- Disco
- Halo
- Bojo



| Propriedade | Disco Fino | Disco Espesso | Halo Estelar |
|----------------------------------|-------------------------------|---------------------------------|---------------------------|
| Massa das estrelas | $4 \times 10^{10} M_{\odot}$ | Alguns % da massa do disco fino | $10^{10} M_{\odot}$ |
| Luminosidade | $3 \times 10^{10} L_{\odot}$ | ? | $8 \times 10^8 L_{\odot}$ |
| Idade típica das estrelas | 1 milhão a 10 bilhões de anos | 11 bilhões de anos | 13 bilhões de anos |
| Abundância dos elementos pesados | Alta | Intermediária | Muito baixa |
| Rotação | Alta | Moderadamente alta | nenhuma |

