

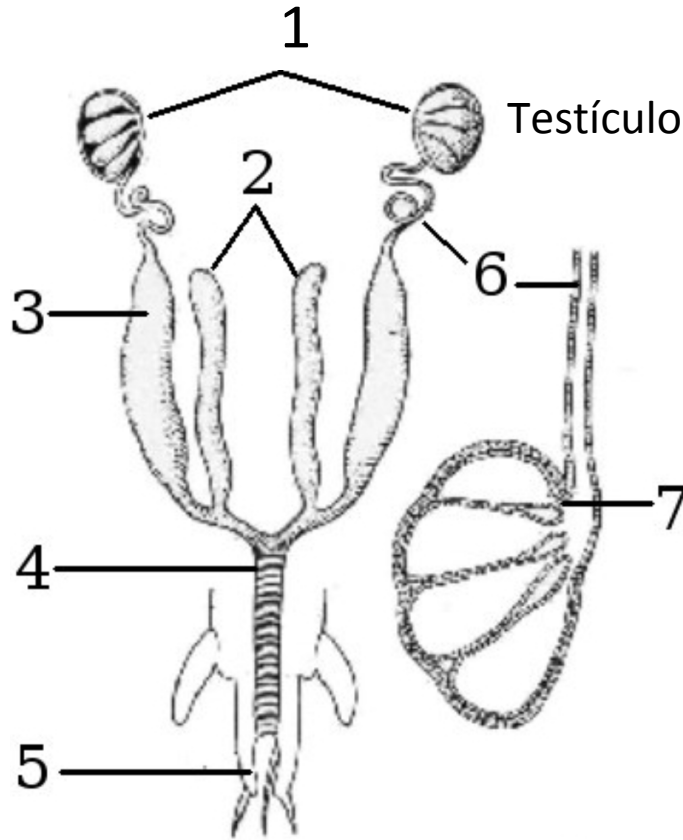


Gametogênese em Insetos



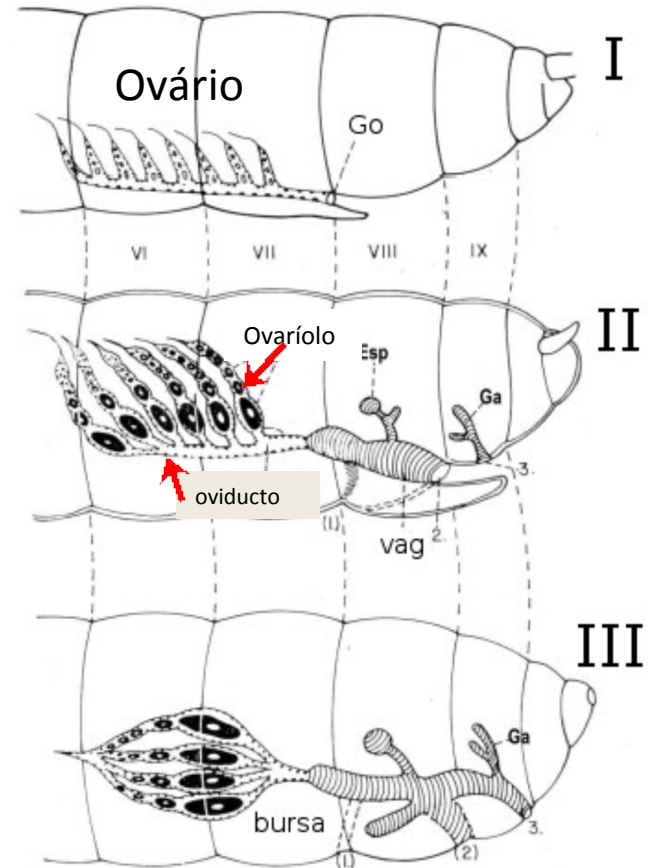
Sistema reprodutor nos insetos adultos

Macho



- 1- Testículos,
- 2- glândulas acessórias
- 3- vesículas seminais
- 4- ducto ejaculatório
- 5- gonoporo,
- 6- canal deferente,
- 7- lóbulo testicular

Fêmea

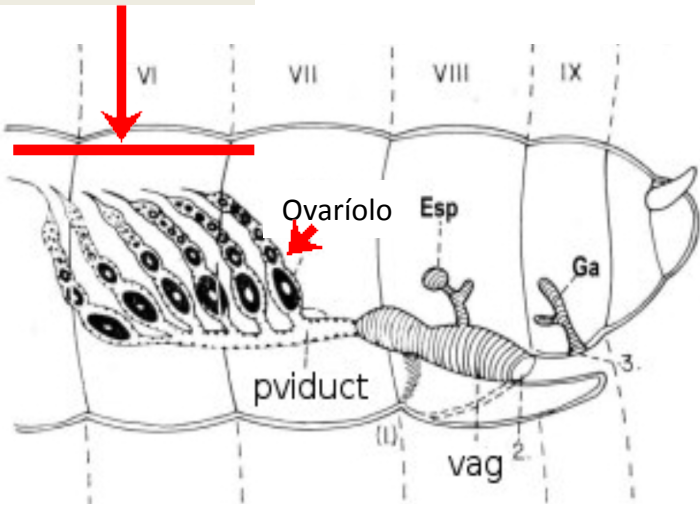


I-Ephemeroptera, II-Orthoptera, III-Lepidoptera

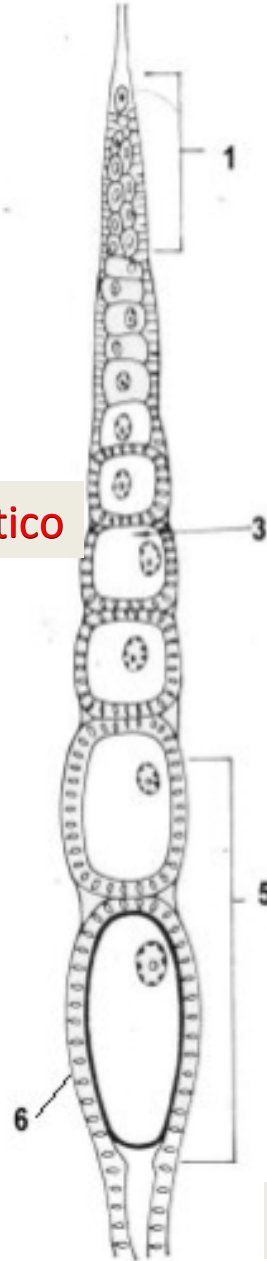
Go- gonoporo, Esp-Espermateca, Ga- gl. Acessória
vag- vagina, Ovo- ovaríolo

Ovariolos são as unidades estruturais dos Ovários de Insetos

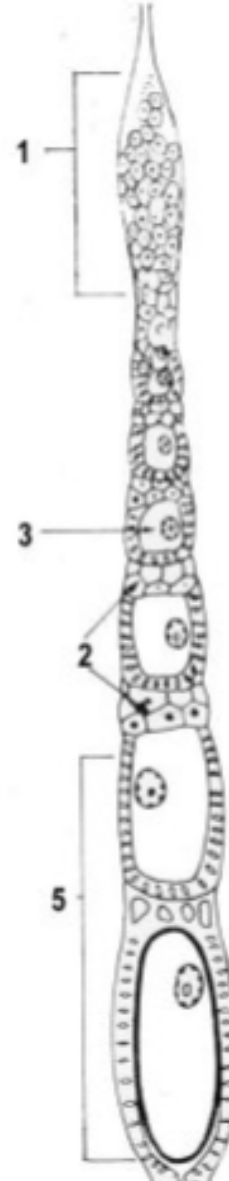
Ovário Panoístico



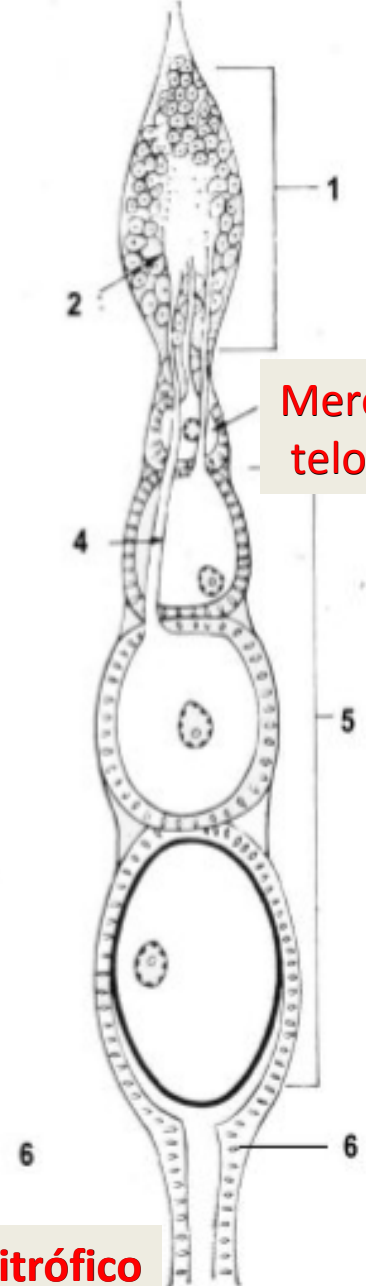
Panoístico



Meroístico politrófico

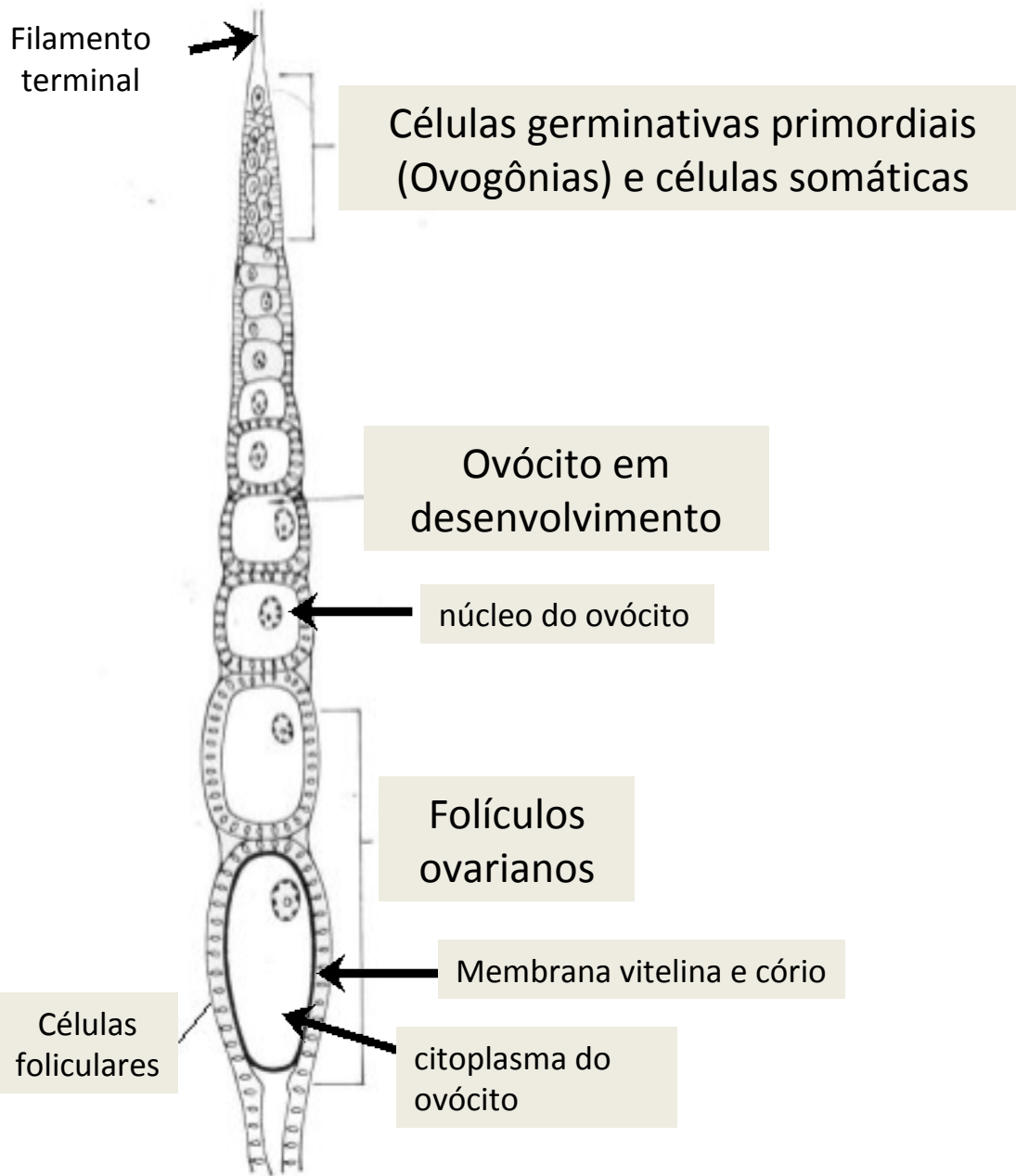


Meroístico telotrófico

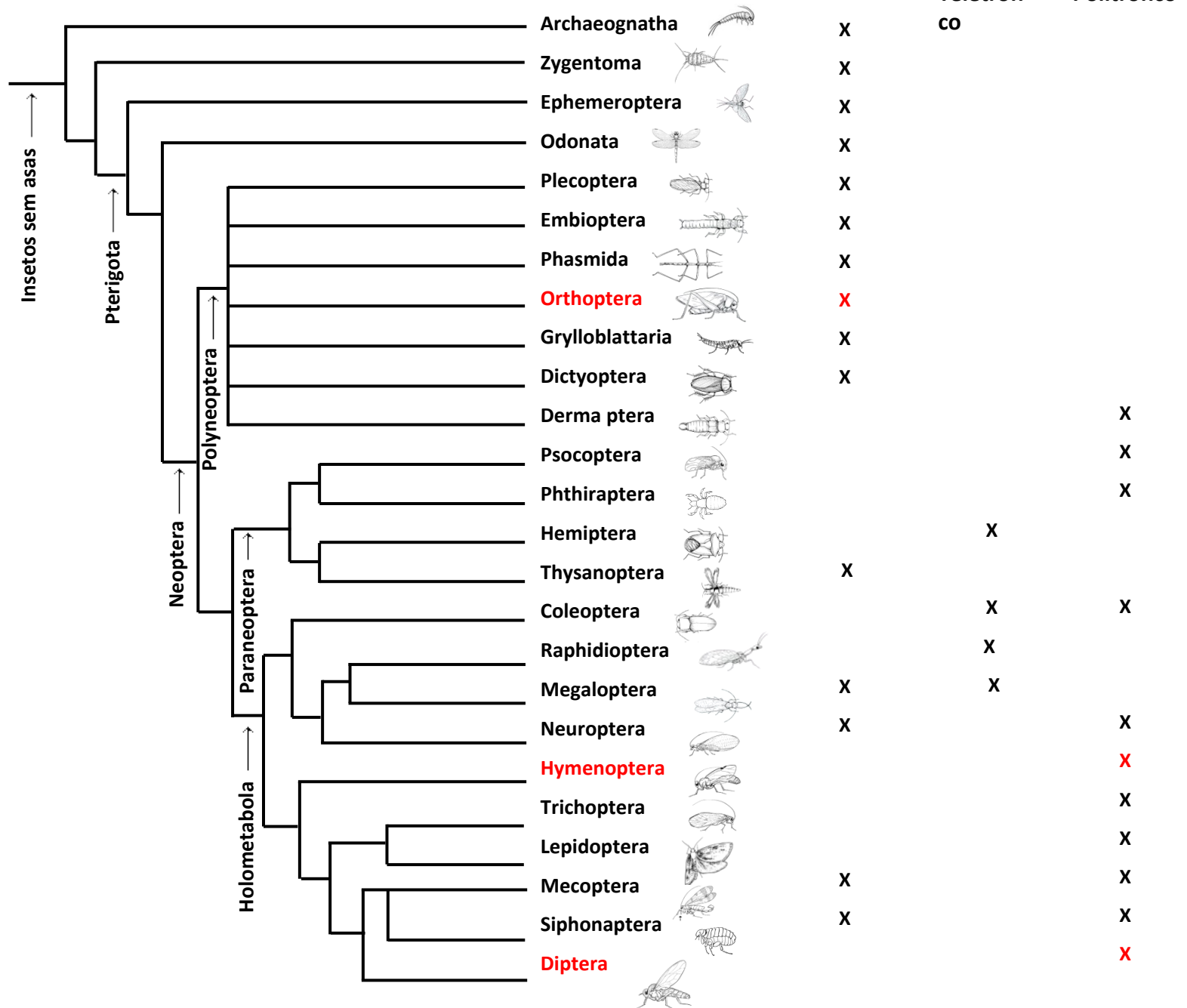


A estrutura morfológica dos ovariolos define o tipo de Ovário

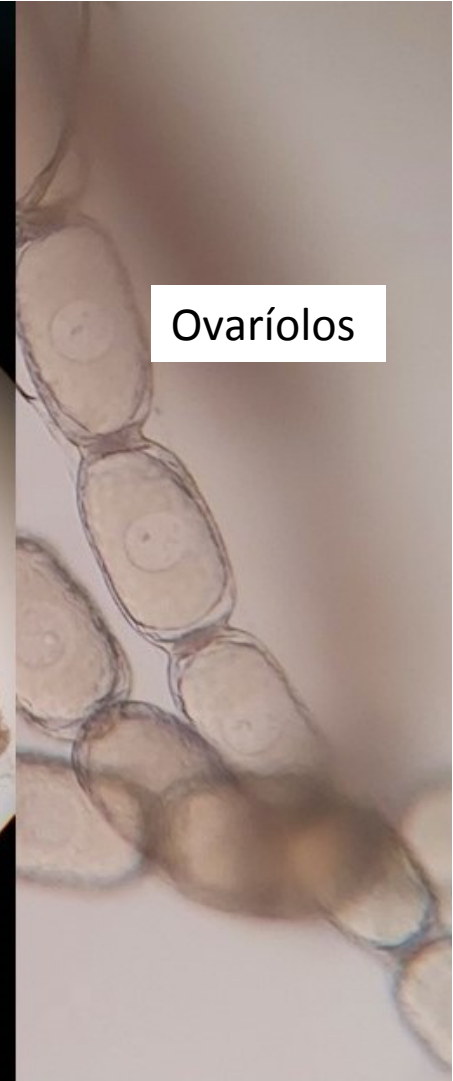
OVÁRIOLO (PANOÍSTICO): Orthoptera



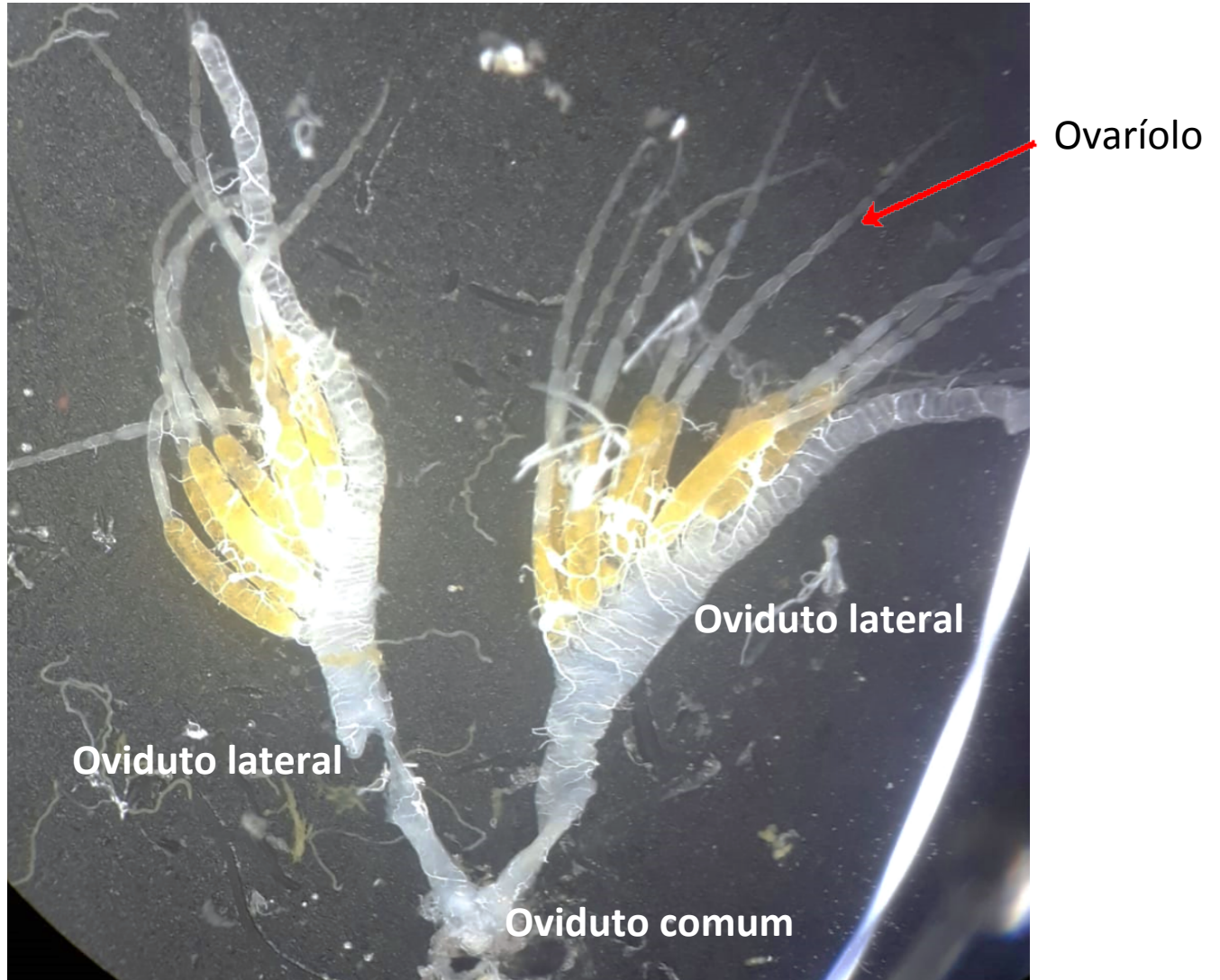
Tipos de ovários em Insetos



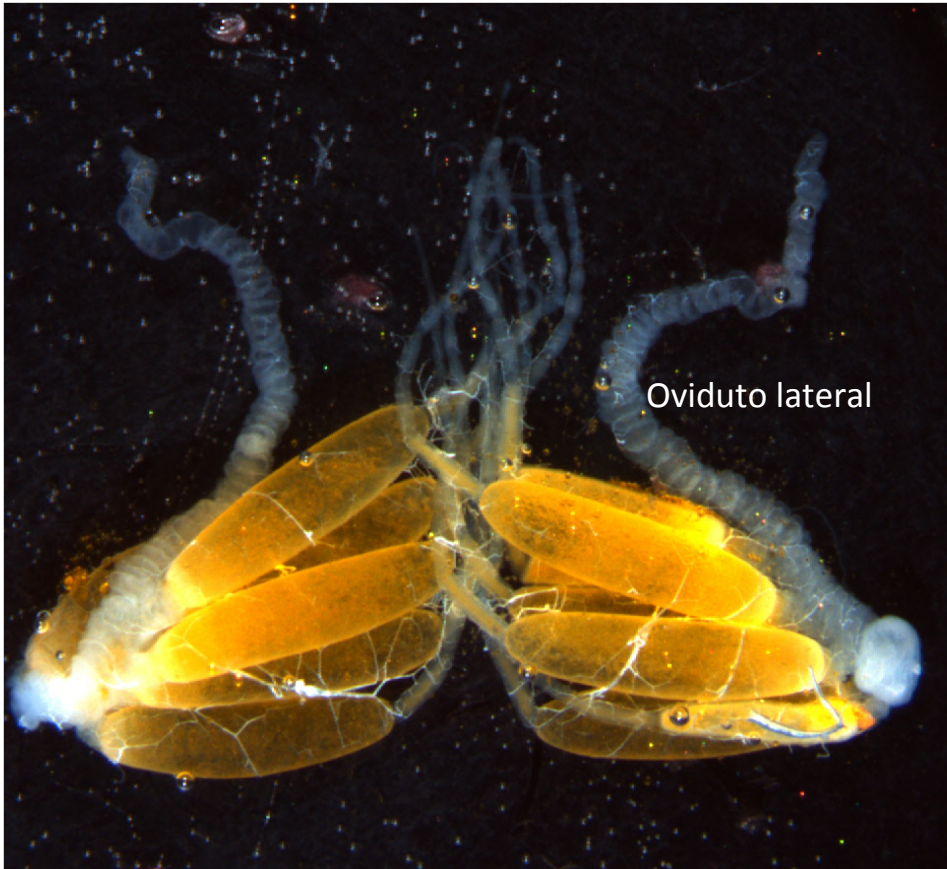
Ovário de Gafanhoto



Ovários de Gafanhoto

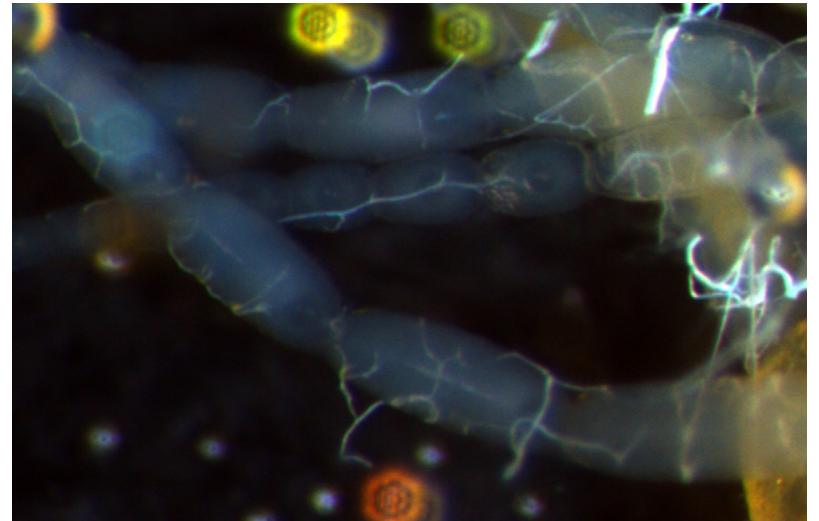


Ovários de Gafanhoto



Oviduto lateral

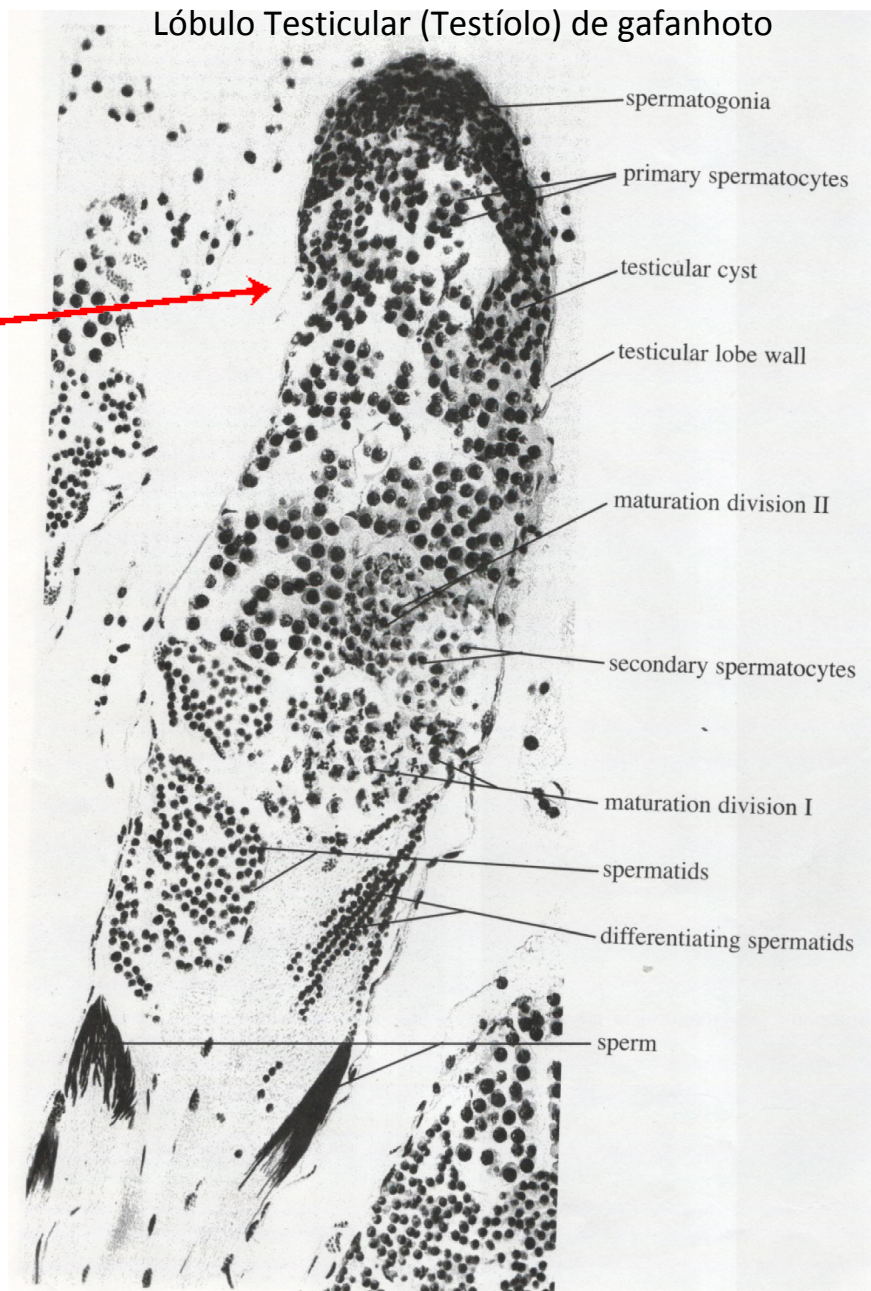
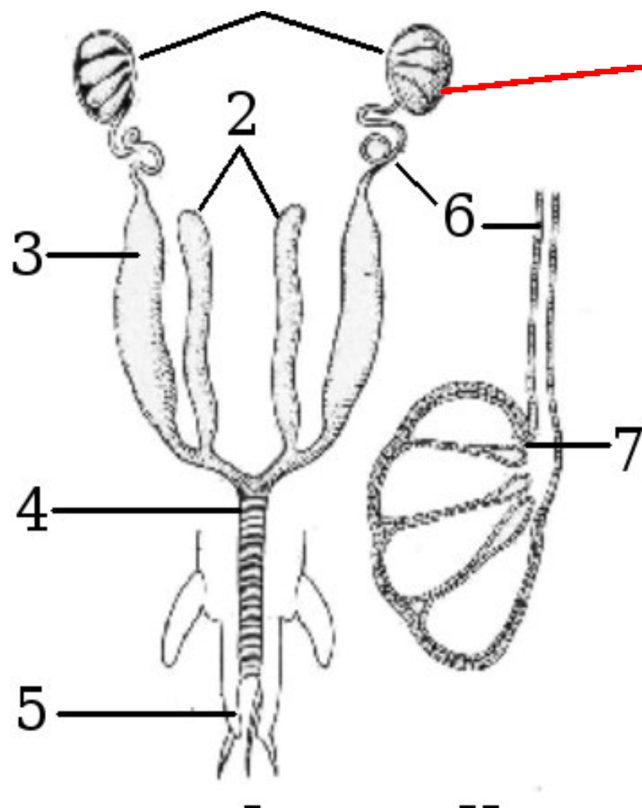
Ovários

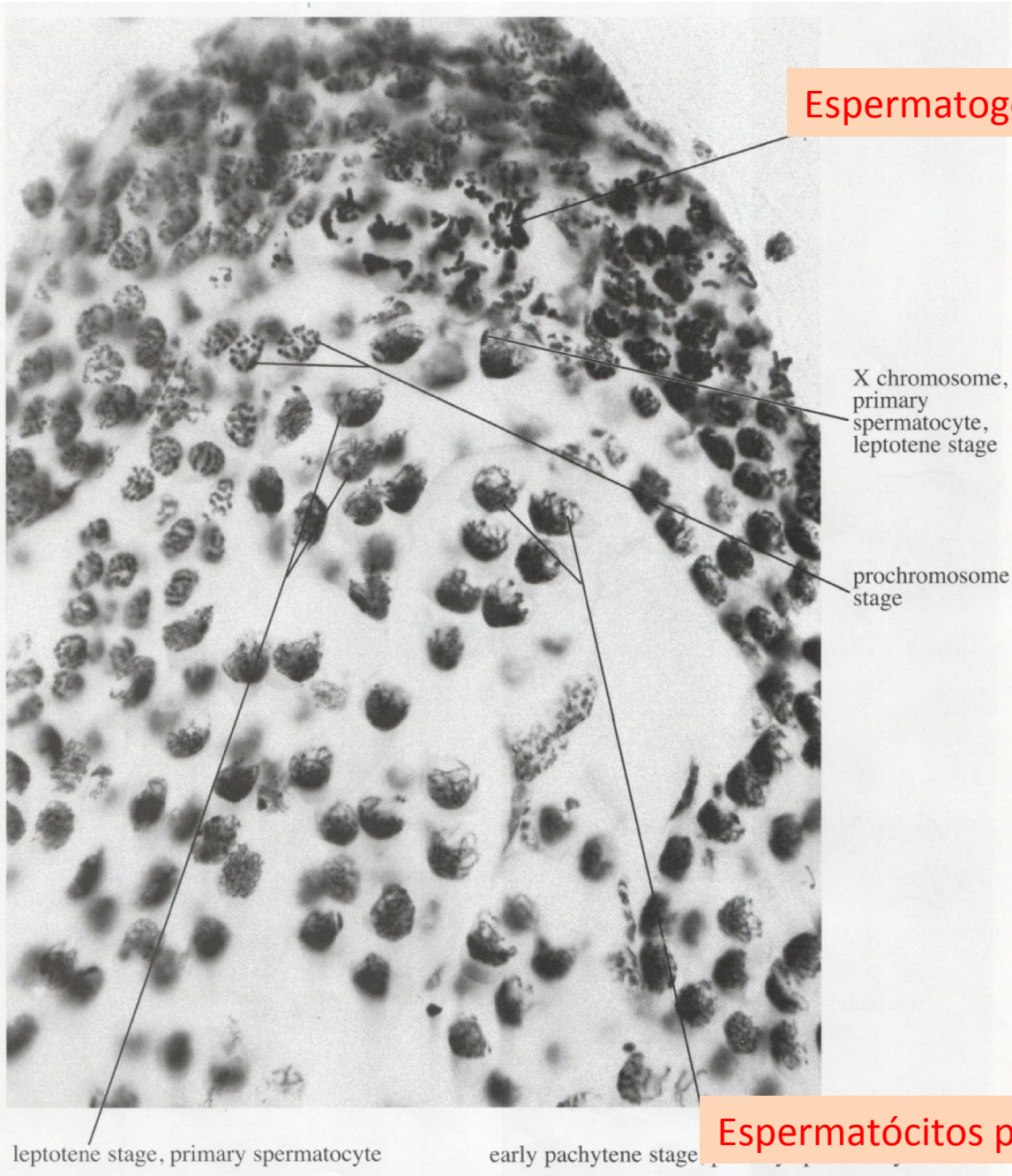


Ovaríolos

Os lóbulos testiculares (ou testíolos) são as unidades estruturais dos testículos de insetos

Sistema reprodutor de insetos machos





Espermatogônia

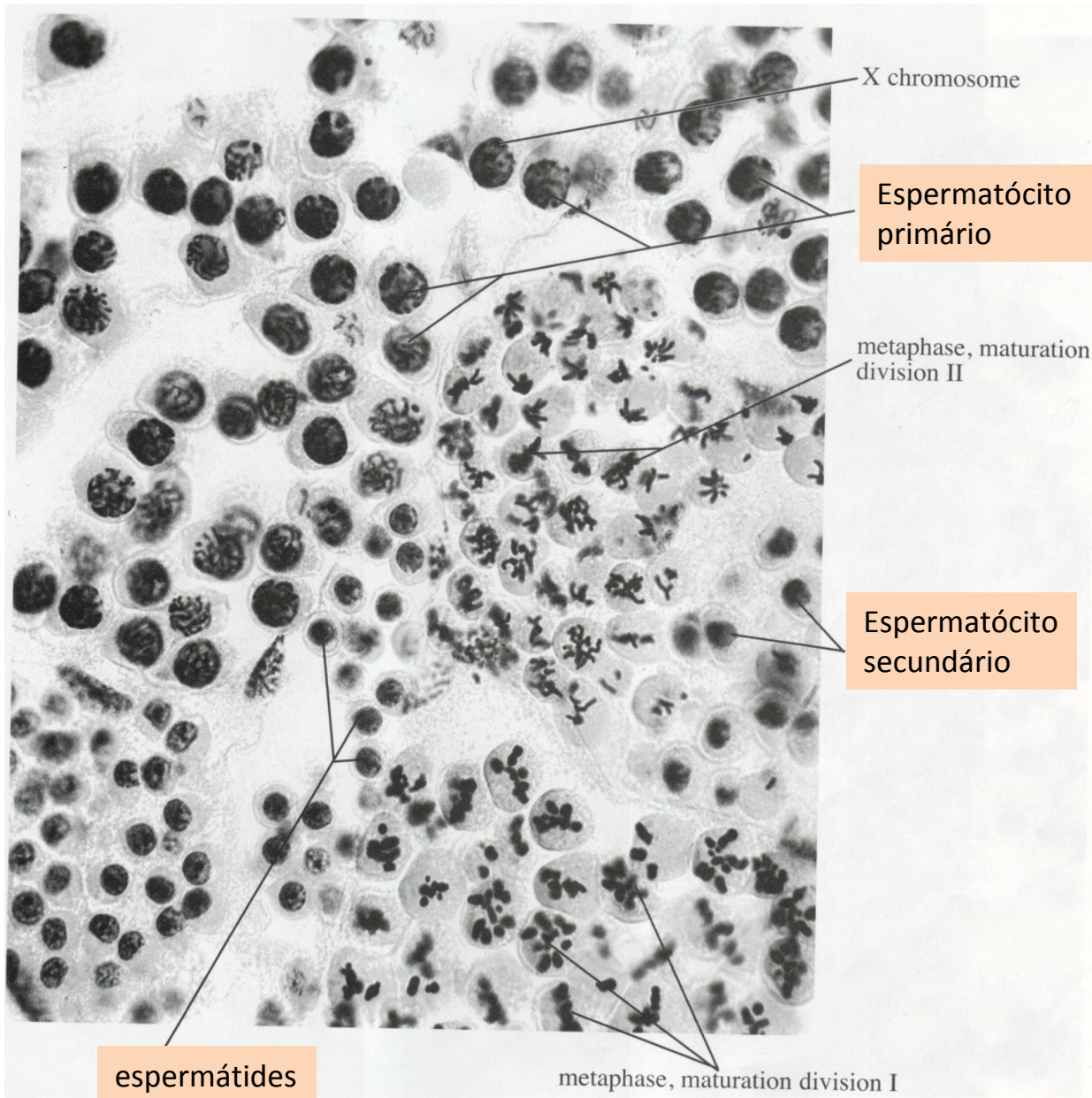
Porção apical de lóbulo testicular (gafanhoto)

A espermatogênese ocorre nos lóbulos testiculares (testíolos)

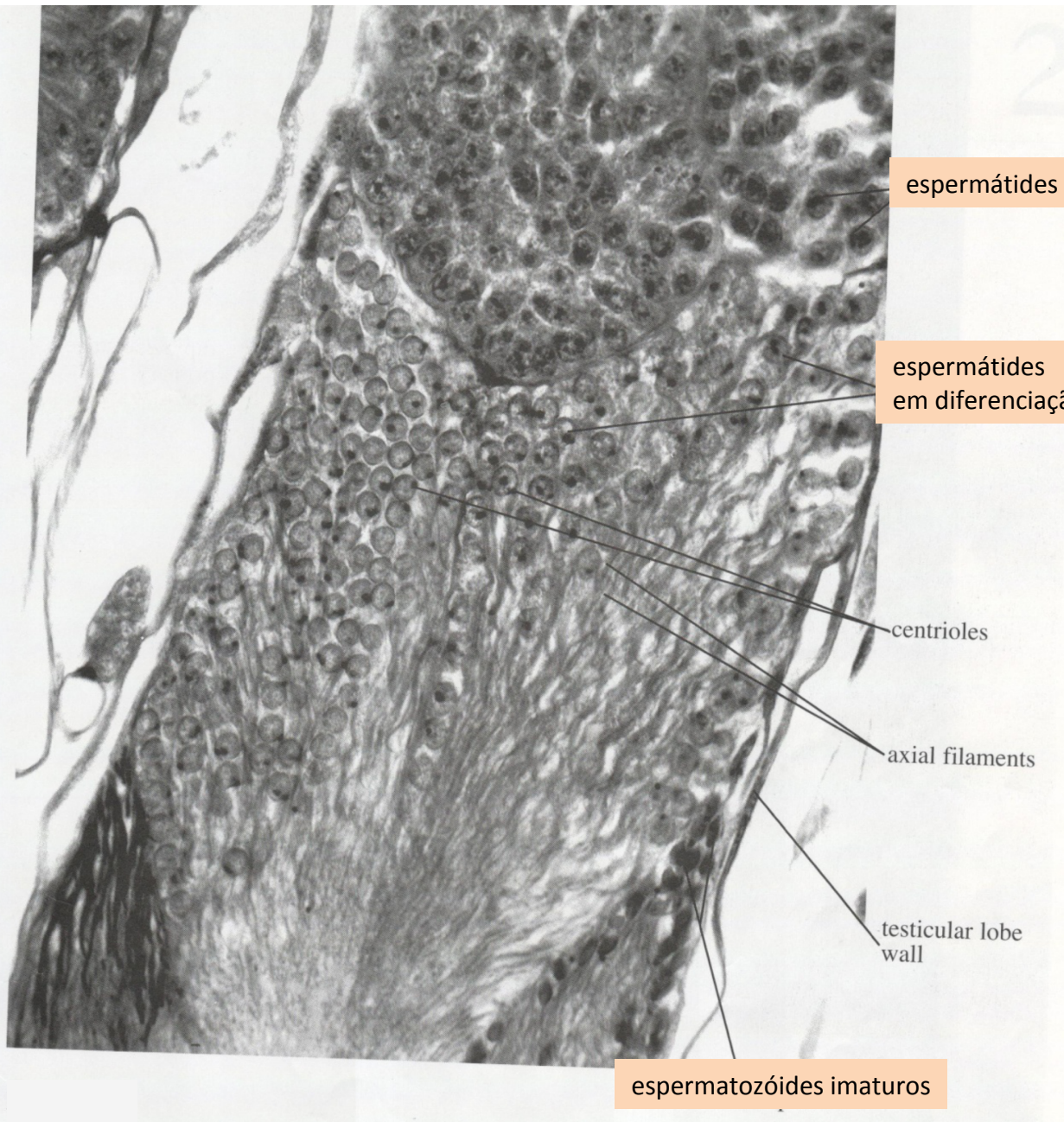
Espermatócitos primários

leptotene stage, primary spermatocyte

early pachytene stage



**Porção mediana
de lóbulo
testicular
(gafanhoto)**



espermátides

espermátides em diferenciação

centríoles

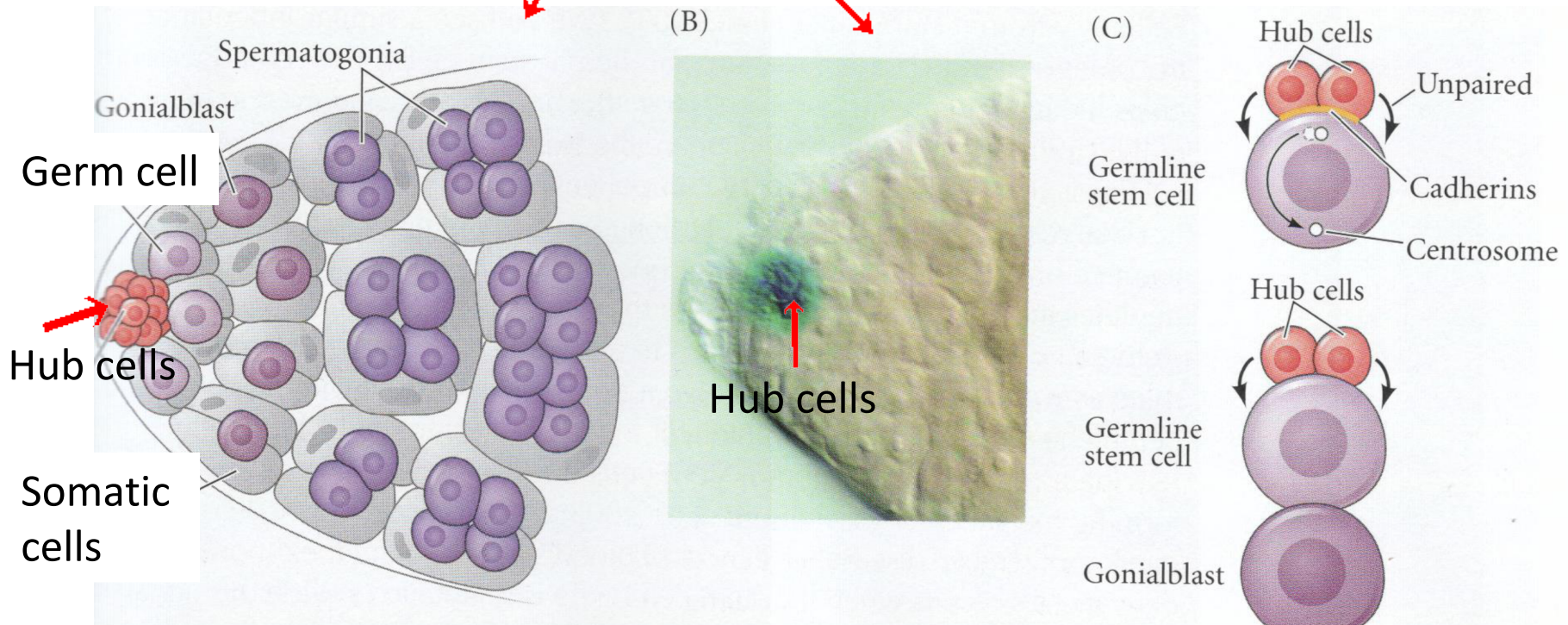
axial filaments

testicular lobe wall

espermatozóides imaturos

Porção basal de lóbulo testicular (gafanhoto)

Porção apical de um Testículo de *Drosophila*



Hub cells secretam a proteína **Unpaired** (fator parácrino) que mantém as células germinativas mais próximas como “stem cells” (indiferenciadas). As mais distantes (*gonialblasts*) iniciam o processo de diferenciação e formam os espermatozóides.

Testículo de Gafanhoto

