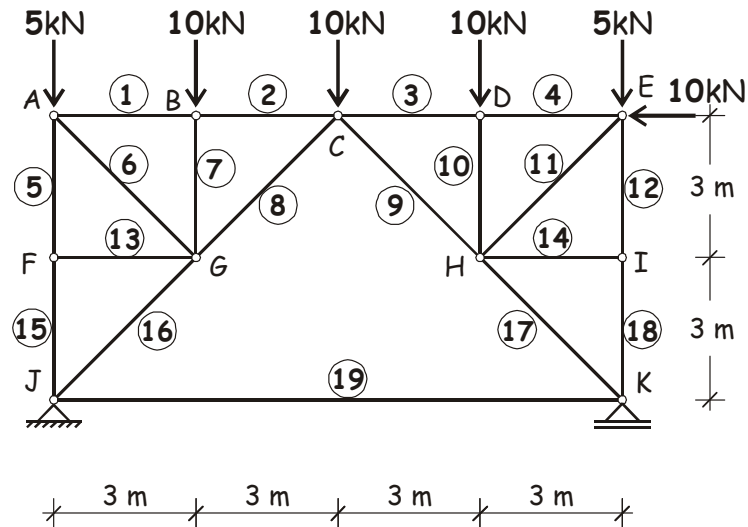


Nome do Aluno: \_\_\_\_\_ Nº USP: \_\_\_\_\_

Assinatura: \_\_\_\_\_ Nota: \_\_\_\_\_

**Q1 (3,0)** Determinar as forças normais nas barras 7, 8, 16 e 19 da treliça da figura.



**RESPOSTA:**

$$N_7 = -10 \text{ kN}$$

$$N_8 = -10\sqrt{2} \text{ kN}$$

$$N_{16} = -15\sqrt{2} \text{ kN}$$

$$N_{19} = 5 \text{ kN}$$