



Waymo Safety Report

# On the Road to Fully Self-Driving



WAYMO

## OUR MISSION

---

Waymo's mission is to bring self-driving technology to the world, making it safe and easy for people and things to move around. We believe our technology can improve mobility by giving people the freedom to get around, and save thousands of lives now lost to traffic crashes.





# We're Building a Safer Driver for Everyone



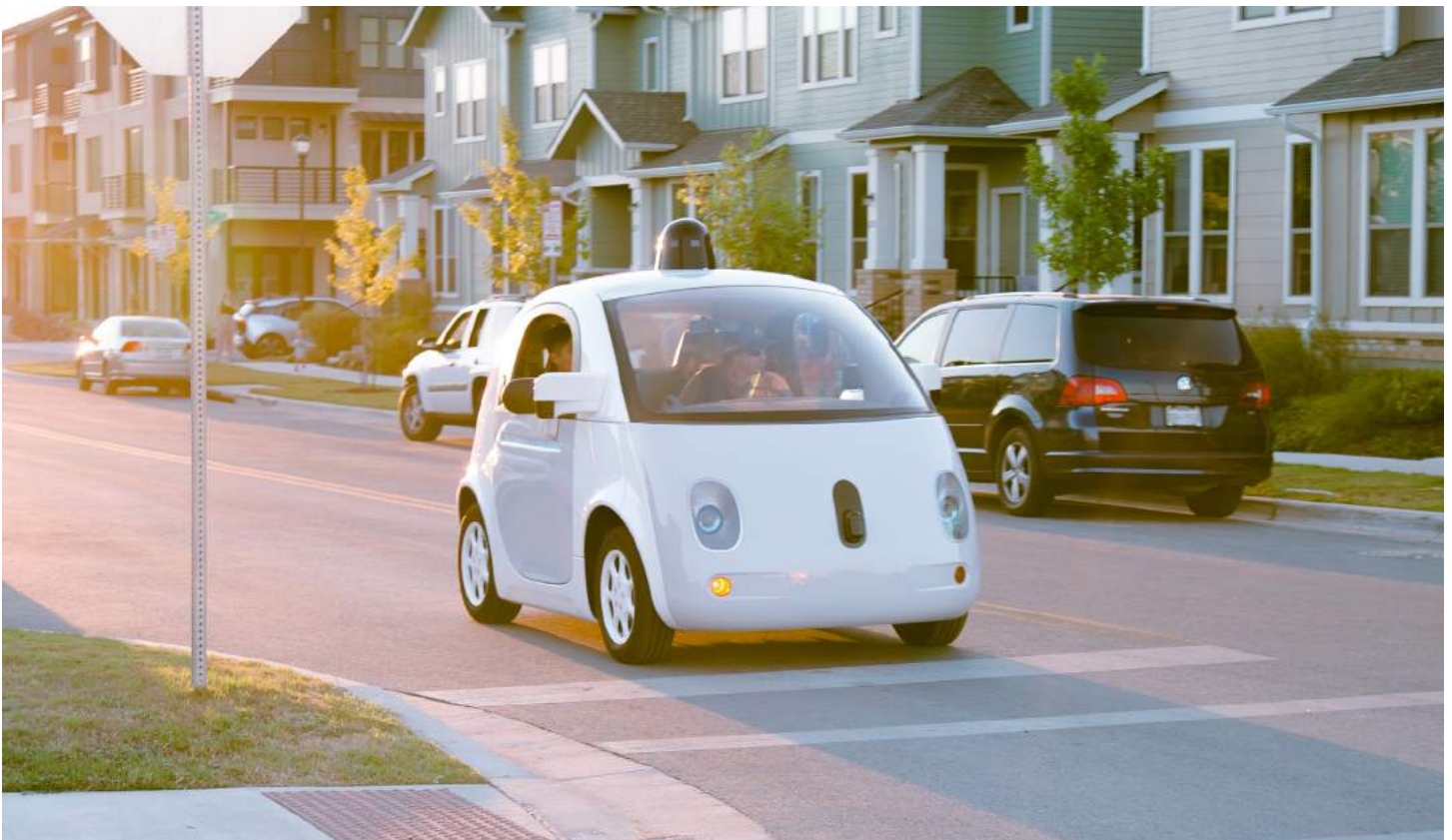
Self-driving vehicles hold the promise to improve road safety and offer new mobility options to millions of people. Whether they're saving lives or helping people run errands, commute to work, or drop kids off at school, **fully self-driving vehicles** hold enormous potential to transform people's lives for the better.

**Safety** is at the core of Waymo's mission—it's why we were founded over nine years ago as the *Google self-driving car project*.

Every year, 1.2 million lives are lost to traffic crashes around the world, and in the U.S. the number of tragedies is growing. A common element of these crashes is that 94% involve human error. Driving is not as safe or as easy as it should be, while distracted driving is on the rise. We believe our technology could save thousands of lives now lost to traffic crashes every year.

Our commitment to safety is reflected in everything we do, from our company culture to how we design and test our technology. In this, our first Safety Report on Waymo's fully self-driving technology, we detail Waymo's work on—and our commitment to—safety. This overview of our safety program underscores the important lessons learned through the 5 million miles Waymo's vehicles have self-driven on public roads and through our billions of miles of simulated driving.





---

Waymo's Safety Report also addresses the U.S. Department of Transportation (DOT) federal policy framework for autonomous vehicles: *Automated Driving Systems 2.0: A Vision for Safety*. The DOT framework outlines 12 safety design elements, and encourages companies testing and deploying [self-driving systems](#) to address each of these areas. Over the course of our Report, we will outline the processes relevant to each safety design element and how they underpin the development, testing, and deployment of fully self-driving vehicles.

Fully self-driving vehicles will succeed in their promise and gain public acceptance only if they are safe. That's why Waymo has been investing in safety and building the processes that give us the confidence that our self-driving vehicles can serve the public's need for safer transportation and better mobility.

# TABLE OF CONTENTS

---

<b>1. Our System Safety Program: Safety by Design</b>	10
Areas Addressed by Waymo’s System Safety Program	11
Safety Processes	12
<b>2. How Waymo’s Self-Driving Vehicles Work</b>	13
The Self-Driving System	13
Object and Event Detection and Response: Our Vehicle Sensors	14
Our Self-Driving Software	15
Operational Design Domain: Ensuring Our Vehicles Operate Safely Under Specific Conditions	16
Minimal Risk Condition (Fallback): Ensuring the Vehicle Can Transition to a Safe Stop	17
Data Recording and Post-Crash Behavior	18
Self-Driving Vehicle Cybersecurity	18
<b>3. Testing and Validation Methods: Ensuring Our Vehicles Are Capable and Safe</b>	20
Base Vehicle Safety	21
Self-Driving Hardware Testing	21
Self-Driving Software Testing	22
Behavioral Competencies for Normal Driving	25
Testing the Fully Integrated Self-Driving Vehicle	26
Testing on Public Roads	26
Testing Crash Avoidance Capabilities	28
Hardware Reliability and Durability Testing	29
<b>4. Interacting Safely with the Public</b>	30
Rider Experience	31
Accessibility: Unlocking Opportunities for Those Who Cannot Drive Today	32
Emergencies and Interacting With Law Enforcement and First Responders	33
<b>5. Conclusion</b>	34
<b>Appendix: Scenario Types Used for Testing and Validation</b>	35
Appendix A. Basic Behavioral Competency Testing	36
Appendix B. Avoidance or Mitigation of Common Crash Scenarios	38
<b>Glossary</b>	40
<b>End Notes</b>	42

# The World Around Us

## Safety

**94**  
**PERCENT**  
of U.S. crashes involve  
human error. [1]

**1.2**  
**MILLION**  
deaths worldwide  
due to vehicle crashes  
in 2013. [2]

**37,461**  
**ROAD DEATHS**  
in the U.S. in 2016 and  
2.4 million injuries  
in 2015. [3]

**2**  
**OUT OF 3**  
people will be involved  
in a drunk driving crash  
in their lifetime. [4]

## Society

**\$594**  
**BILLION**  
in harm from loss of life and  
injury each year. [5]

**\$277**  
**BILLION**  
in annual economic costs. [6]

**\$160**  
**BILLION**  
in gas burned and  
time lost each year. [7]

## Mobility and Quality Of Life

**3**  
**MILLION**  
Americans age 40 and older  
are blind or have low vision. [8]

**79**  
**PERCENT**  
of seniors age 65 and older  
living in car-dependent  
communities. [9]

**42**  
**HOURS**  
wasted in traffic each year  
per person. [7]

## Self-Driving Technology Can Save Lives and Improve Mobility

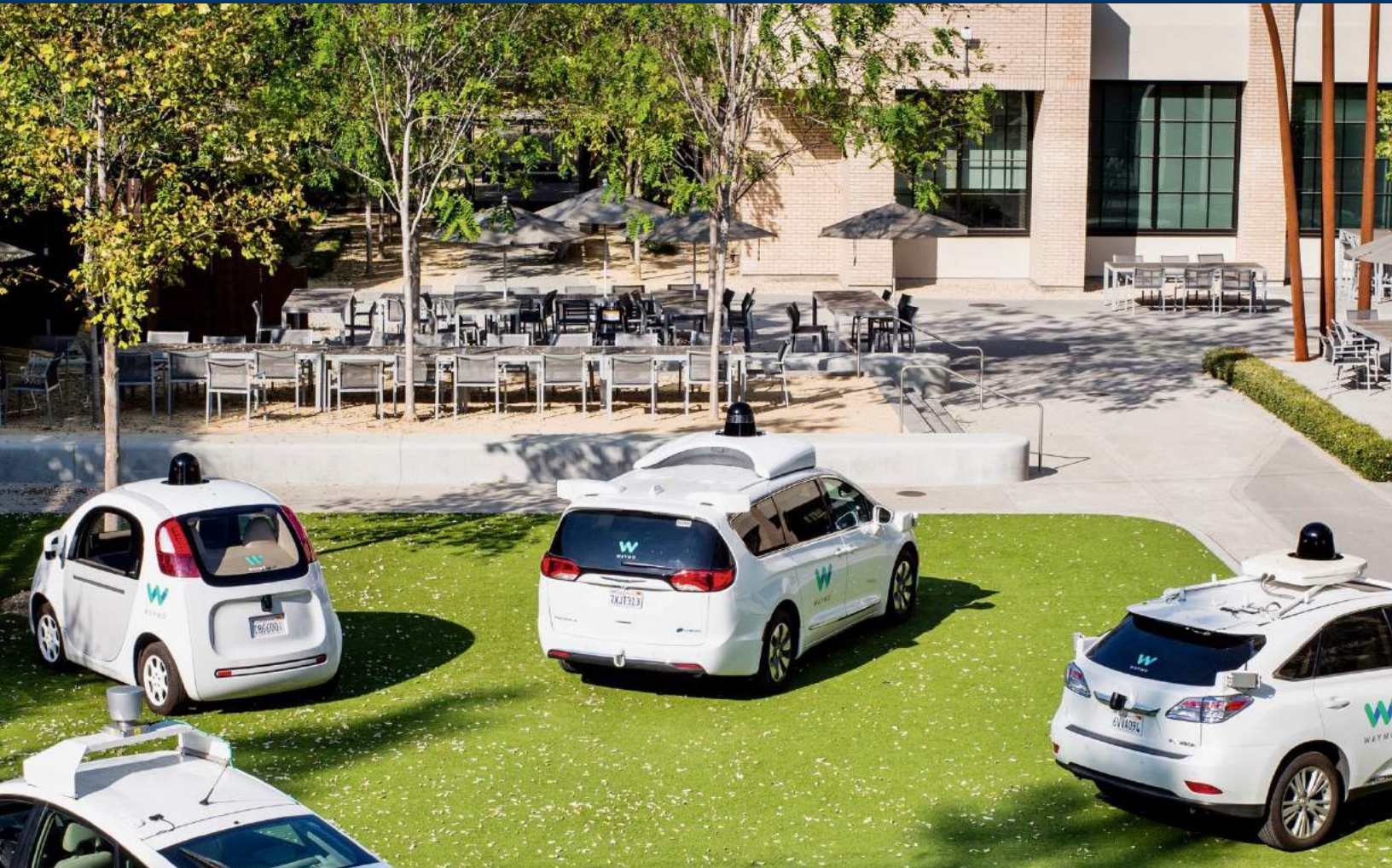


At Waymo, we're designing fully self-driving vehicles that  
make it safe and easy for everyone to get around.



# Building the World's Most Experienced Driver

Every mile, in every car, is shared with the entire fleet, giving every Waymo vehicle more experience for the next mile.



4

Generations of Self-Driving Vehicles

9

Years Self-Driving in More than 25 U.S. Cities

5

Million Real-World Miles on Public Roads

5

Billion Self-Driven Miles Simulated



# How Our Self-Driving Vehicle Sees the World and How it Works

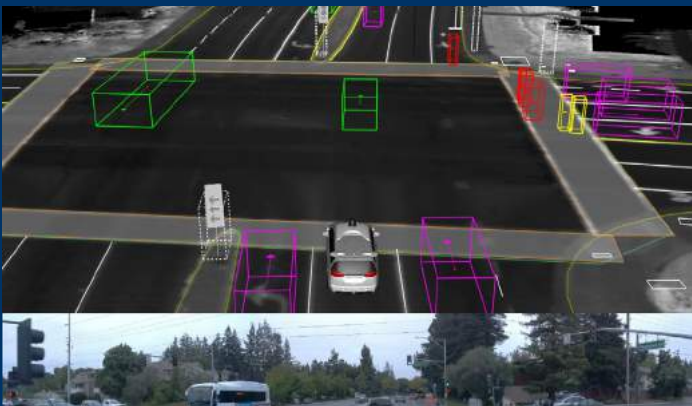
At the most basic level, human drivers need to answer four questions: “Where am I?” (perceiving the environment around you), “What’s around me?” (processing that information), “What will happen next?” (predicting how others in that environment will behave), and “What should I do?” (making driving decisions based on that information). Self-driving vehicles need to answer those questions, too.



A Waymo vehicle's onboard map view of the intersection of W. Middlefield Road at Rengstorff Avenue, Mountain View, CA.

## 1. Where Am I?

Before our cars drive in any location, our team builds our own detailed three-dimensional maps that highlight information such as road profiles, curbs and sidewalks, lane markers, crosswalks, traffic lights, stop signs, and other road features. Rather than rely on GPS, Waymo's vehicles cross-reference their pre-built maps with real-time sensor data to precisely determine their location on the road.

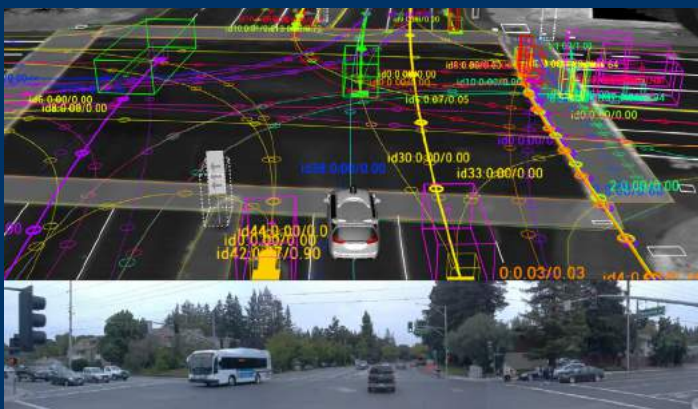


In this example, our vehicle has detected vehicles (depicted by green and purple boxes), pedestrians (in yellow), and cyclists (in red) at the intersection—and a construction zone up ahead.

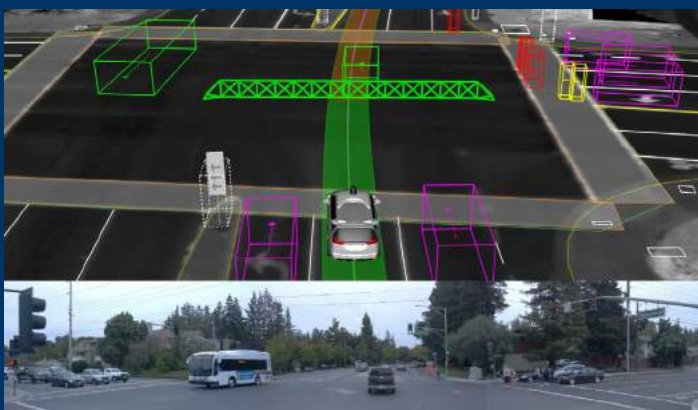
## 2. What's Around Me?

Our sensors and software scan constantly for objects around the vehicle—pedestrians, cyclists, vehicles, road work, obstructions—and continuously read traffic controls, from traffic light color and railroad crossing gates to temporary stop signs. Our vehicles can see up to 300 meters away (nearly three football fields) in every direction.





The simulated imagery shown demonstrates how our software assigns predictions to each object surrounding our vehicle—other vehicles, cyclists, pedestrians, and more.



The green path indicates the trajectory through which our vehicle can proceed ahead. The series of green fences indicate that the self-driving vehicle can proceed, and that the vehicle has identified the vehicles ahead and understands it has to maintain certain headway.

### 3. What Will Happen Next?

For every dynamic object on the road, our software predicts future movements based on current speed and trajectory. It understands that a vehicle will move differently than a cyclist or pedestrian. The software then uses that information to predict the many possible paths that other road users may take. Our software also takes into account how changing road conditions (such as a blocked lane up ahead) may impact the behavior of others around it.

### 4. What Should I Do?

The software considers all of this information as it finds an appropriate route for the vehicle to take. Our software selects the exact trajectory, speed, lane, and steering maneuvers needed to progress along this route safely. Because our vehicles are constantly monitoring the environment, and predicting the future behavior of other road users in 360 degrees around our vehicles, they're able to respond quickly and safely to any changes on the road.

A white Waymo self-driving car is shown from a front-facing perspective, driving on a residential street. The car has a black sensor dome on its roof and a person wearing sunglasses is visible in the driver's seat. The background shows a suburban neighborhood with houses and trees.

# Our System Safety Program

## SAFETY BY DESIGN

**As the first company to complete a fully self-driving trip on public roads, Waymo has had to write its own playbook.**

In the earliest days of our company, we established our [System Safety](#) Program, which documented practices that would ensure safety in the testing and development of our technology. Today, that program is a comprehensive and robust approach we call *Safety by Design*.

*Safety by Design* means we consider safety from the ground up and incorporate safety at every [system](#) level and every development stage, from design to testing and validation. It is a multi-pronged approach that builds upon best practices from a variety of industries, including aerospace, automotive, and defense (including aspects of MIL-STD-882E [10] and ISO 26262). [11]

In line with these practices, each individual component of our self-driving vehicle is tested robustly to ensure that all [subsystems](#) perform safely when integrated as a complete self-driving system. This approach also helps us validate that the vehicle works safely as a fully self-driving vehicle on the road, and understand how a change or failure in any part of the system—component, subsystem, or otherwise—causes changes throughout the rest of the self-driving system.

This process has led to many of Waymo's key safety features, including redundant critical safety systems, which enable the vehicle to come to a safe stop in the event of a technology failure, the use of complementary sensors with overlapping fields-of-view, and our extensive testing program which has helped us make rapid improvements in our technology.

---

## Areas Addressed by Waymo's System Safety Program

Our System Safety Program addresses five distinct safety areas: [behavioral safety](#), [functional safety](#), [crash safety](#), [operational safety](#), and [non-collision safety](#). Each aspect requires a combination of testing methods that, taken together, allow us to validate the safety of our fully self-driving vehicles.

### Behavioral Safety:

Behavioral safety refers to the driving decisions and behavior of our vehicles on the road. Just as for human drivers, our vehicles are subject to traffic rules and must safely navigate a variety of scenarios, both expected and unexpected. Waymo uses a combination of functional analysis, simulation tools, and on-road driving to fully understand the challenges presented within our [operational design domain](#), and to develop [safety requirements](#) and a multi-pronged testing and validation process.

### Functional Safety:

Functional safety seeks to ensure that our vehicles operate safely even when there is a system [fault](#) or failure. That means building in backup systems and redundancies to handle the unexpected. For example, all of our self-driving vehicles are equipped with a secondary computer that can take over in the event of a main computer failure, bringing the vehicle to a safe stop (i.e. a [minimal risk condition](#)). Each of our vehicles also has backup steering and braking, along with many layers of redundancies throughout the system.

### Crash Safety:

Crash safety, or crashworthiness, refers to the ability of vehicles to protect passengers inside the vehicles through a variety of measures, ranging from a structural design that shields people inside, to features like seat restraints and airbags that mitigate injury or prevent death. Crash safety in the U.S. is covered by the Federal Motor Vehicle Safety Standards (FMVSS), which are issued by the National Highway Traffic Safety Administration (NHTSA). Vehicle [manufacturers](#) must certify that their base vehicles meet applicable FMVSS requirements.

### Operational Safety:

This refers to the interaction between our vehicles and passengers. With operational safety, we can ensure that consumers have a safe and comfortable experience in our vehicles. Our approach to building a safe product is informed by our [hazard analyses](#), existing safety standards, extensive testing, and best practices from a variety of industries. For example, through initiatives like our early rider program (further described in section 4), we have developed and tested user interfaces so that passengers can clearly indicate their destination, direct the vehicle to pull over, and contact Waymo rider support.

### Non-Collision Safety:

We address physical safety for the range of people who might interact with the vehicle. For example, this includes electrical system or sensor hazards that could cause harm to occupants, vehicle technicians, test drivers, first responders, or bystanders.



---

## Safety Processes

Waymo organizes the processes we use to keep our vehicles safe through our System Safety Program. Safety requirements needed to reduce the [risk](#) of potential [hazards](#) are captured internally, addressed in design, and then verified and validated to demonstrate that safety risks have been reduced to the levels identified in the analyses.

Our approach starts with identifying hazard scenarios and potential mitigations that can be implemented to reduce risk. These mitigations may take various forms such as software or hardware requirements, hardware or software design recommendations, procedural controls, or recommendations for additional analyses. We use various hazard assessment methods such as preliminary hazard analysis, fault tree, and Design Failure Modes and Effects Analyses (DFMEA). This continuous process goes hand-in-hand with ongoing engineering and test activities and safety engineering analyses.

The hazard analysis process helps identify requirements for our self-driving system architecture, subsystems, and components. These safety requirements are developed from the use of a series of subsystem and system analysis techniques, various systems engineering processes, and Federal and State laws and regulations. The analysis also supports the development of requirements for our behavioral safety testing, and how our system detects and handles faults.

With our system architecture and requirements defined, Waymo then conducts extensive testing on public roads, a closed course, and in simulated driving. We use information gathered from this testing, as well as research into national crash data and naturalistic driving studies [12], to provide additional insights into potential hazards. The combined knowledge derived from these various tools plays a major role in our understanding of our system's readiness. Drawing on this understanding, we're able to comprehensively analyze and evaluate the safety of our system before we permit fully self-driving operation on public roads.



# How Waymo's Self-Driving Vehicles Work

## The Case for Full Autonomy: Allowing Passengers to Stay Passengers

Advanced driver-assist technologies were one of the first technologies our teams explored. In 2012 we developed and tested a Level 3 system that would drive autonomously on the freeway in a single lane but would still require a driver to take over at a moment's notice. During our internal testing, however, we found that human drivers over-trusted the technology and were not monitoring the roadway carefully enough to be able to safely take control when needed.

As driver-assist features become more advanced, drivers are often asked to transition from passenger to driver in a matter of seconds, often in challenging or complex situations with little context of the scene ahead. The more tasks the vehicle is responsible for, the more complicated and vulnerable this moment of transition becomes.

Avoiding this "handoff problem" is part of the reason why Waymo is working on *fully* self-driving vehicles. Our technology takes care of all of the driving, allowing passengers to stay passengers.



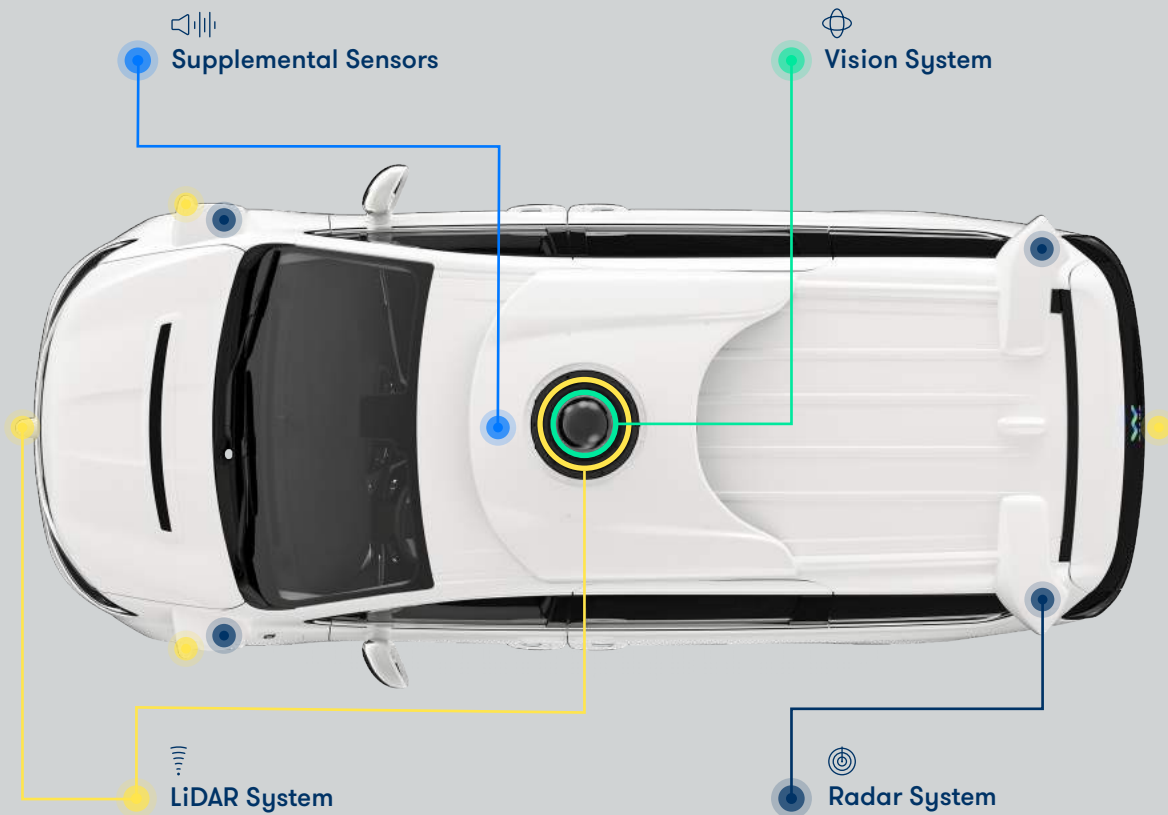
## The Self-Driving System

Our fully self-driving system is designed to operate without a human driver, unlike technologies sold in cars today such as adaptive cruise-control or lane-keeping systems which require constant monitoring by the driver. Our system includes the software and hardware that, when integrated into the vehicle, perform all driving functions.

In self-driving jargon, Waymo's self-driving system is designed to perform the entire [dynamic driving task](#) within a geographic area and under certain defined conditions, without the need for a human driver. This type of technology falls under SAE International's definition of a Level 4 automated driving system, as our technology also has the ability to bring a vehicle to a safe stop (i.e. a minimal risk condition) in the event of any system failures. Unlike autonomous systems at lower levels (Level 1, Level 2, and Level 3), a Level 4 system also has the ability to bring a vehicle to a safe stop (i.e. achieve a minimal risk condition) in the event of any system failures, without any expectation that a human driver take over. [13]

## Object and Event Detection and Response: Our Vehicle Sensors

To meet the complex demands of autonomous driving, Waymo has developed an array of sensors that allow our vehicle to see 360 degrees, both in daytime and at night, and up to nearly three football fields away. This multi-layered sensor suite works together seamlessly to paint a detailed 3D picture of the world, showing dynamic and static objects including pedestrians, cyclists, other vehicles, traffic lights, construction cones, and other road features.



### LiDAR (Laser) System

LiDAR (Light Detection and Ranging) works day and night by beaming out millions of laser pulses per second—in 360 degrees—and measuring how long it takes to reflect off a surface and return to the vehicle. Waymo’s system includes three types of LiDAR developed in-house: a short-range LiDAR that gives our vehicle an uninterrupted view directly around it, a high-resolution mid-range LiDAR, and a powerful new generation long-range LiDAR.

### Vision (Camera) System

Our vision system includes cameras designed to see the world in context, as a human would, but with a simultaneous 360-degree field of view, rather than the 120-degree view of human drivers. Because our high-resolution vision system detects color, it can help our system spot traffic lights, construction zones, school buses, and the flashing lights of emergency vehicles. Waymo’s vision system is comprised of several sets of high-resolution cameras, designed to work well at long range, in daylight and low-light conditions.

### Radar System

Radar uses wavelengths to perceive objects and movement. These wavelengths are able to travel around objects like rain drops, making radar effective in rain, fog, and snow, day or night. Waymo’s radar system has a continuous 360-degree view, so it can track the speed of road users in front, behind and to both sides of the vehicle.

### Supplemental Sensors

Waymo vehicles also have a number of additional sensors, including our audio detection system that can hear police and emergency vehicle sirens up to hundreds of feet away, and GPS to supplement our vehicles’ extensive understanding of their physical locations in the world.



---

## Our Self-Driving Software

**Our self-driving software is the “brain” of our vehicle.** It makes sense of the information coming from our sensors, and uses that information to make the best driving decisions for each situation.

Waymo has spent nine years building and refining our software, using machine learning and other advanced engineering techniques. We’ve trained our software through years of careful design and testing, more than 5 billion miles of simulated driving, and more than 5 million miles of on-road driving experience.

Our system possesses a deep, contextual understanding of the world; this is a key part of what differentiates Level 4 technology. Our self-driving software doesn’t just detect the presence of other objects; it actually understands what an object is, how it’s likely to behave, and how that should affect our vehicle’s own behavior on the road. This is how our vehicles safely navigate roads in fully autonomous mode.

While our software is made up of many different pieces, here we detail three main components: perception, behavior prediction, and planner.

### **PERCEPTION**

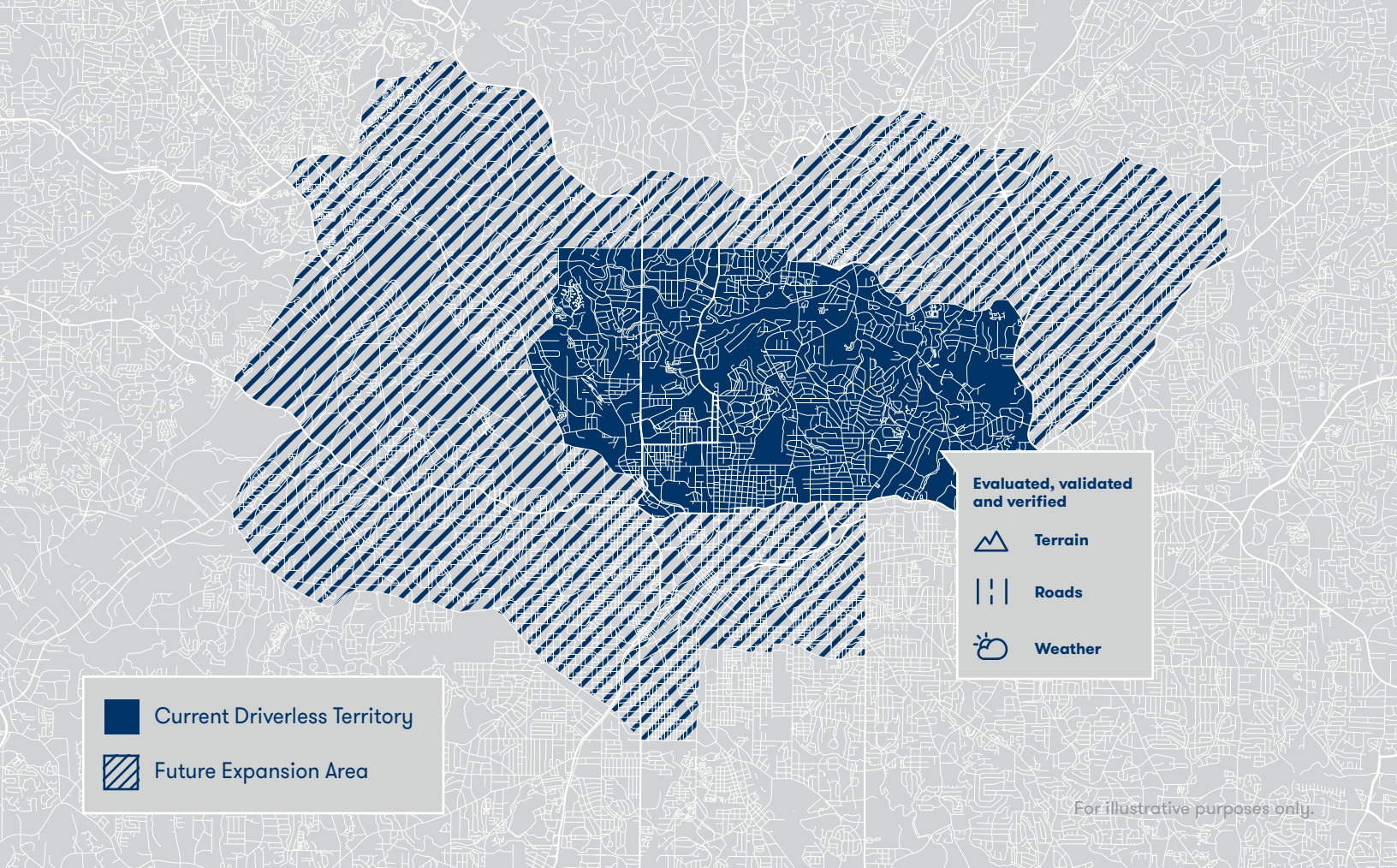
*Perception* is the part of our software that detects and classifies objects on the road, while also estimating their speed, heading, and acceleration over time. Our self-driving software takes the myriad of details coming from Waymo’s sensors and turns them into a cohesive real-time view of the world. Perception helps our vehicle distinguish pedestrians, cyclists, motorcyclists, vehicles, and more. It also distinguishes the color of static objects such as traffic signals. For these kinds of objects, perception enables our system to semantically understand the situation around our vehicle—whether a light is green and clear for the vehicle to proceed, or whether a lane is blocked because of the many cones in front of it.

### **BEHAVIOR PREDICTION**

With *behavior prediction*, our software can model, predict, and understand the intent of each object on the road. Because Waymo has millions of miles of driving experience, our vehicles have highly accurate models of how different road users are likely to behave. For example, our software understands that, though pedestrians, cyclists, and motorcyclists may look similar, their behavior can vary dramatically. Pedestrians move more slowly than either cyclists or motorcyclists, but they can change direction more suddenly.

### **PLANNER**

Our *planner* considers all the information our software has gathered from perception and behavior prediction, and plots out a path for our vehicles. In our experience, the best drivers are the defensive drivers. That’s why we’ve baked in defensive driving behaviors, such as staying out of other drivers’ blind spots and leaving extra room for cyclists and pedestrians. Waymo’s planner can also think several steps ahead. For example, if our software perceives that an adjacent lane ahead is closed due to construction, and predicts that a cyclist in that lane will move over, our planner can make the decision to slow down or make room for the cyclist well ahead of time. Using our on-road experience, we’re also refining our driving so our movements on the road are smooth and comfortable for passengers inside our vehicles, and natural and predictable for other road users.



### **Operational Design Domain: Ensuring Our Vehicles Operate Safely Under Specific Conditions**

The operational design domain refers to the conditions under which a self-driving system can safely operate. Waymo’s domain includes geographies, roadway types, speed range, weather, time of day, and state and local traffic laws and regulations.

An operational design domain can be very limited: for instance, a single fixed route on low-speed public streets or private grounds (such as business parks) in temperate weather conditions during daylight hours. However, Waymo aims to have a broad operational design domain to cover everyday driving. We’re developing self-driving technology that can navigate city streets in a variety of conditions within broad geographic areas. Our vehicles are designed with the capability to drive in inclement weather, such as light to moderate rain, and can operate in daytime and at night.

Waymo’s system is also designed so each vehicle does not operate outside of its approved operational design domain. For example, passengers cannot select a destination outside of our approved geography, and our software will not create a route that travels outside of a “geo-fenced” area, which has been mapped in detail (see “How We Build a Map for a Self-Driving Vehicle”). Similarly, our vehicles are designed to automatically detect sudden changes (such as a snowstorm) that would affect safe driving within their operational design domain and come to a safe stop (i.e. achieve a “minimal risk condition”) until conditions improve.

We design our vehicles to be capable of complying with federal, state, and local laws within their geographic area of operations. [14] Legal requirements, and any changes in those requirements, are identified and built into our system as safety requirements, including relevant speed limits, traffic signs, and signals. Before our vehicles drive in a new location, our team works to understand any unique road rules or driving customs, and we update our software so our vehicles are capable of responding safely. For example, California and Texas (home to two of Waymo’s test cities) have differing rules for how to make right turns in the presence of a bike lane.

Waymo’s operational design domain continues to evolve. Our ultimate goal is to develop fully self-driving technology that can take someone from A to B, anytime, anywhere, and in all conditions. As our system’s capabilities grow and are validated, we will expand our operational design domain to bring our technology to more people.

---

### **Minimal Risk Condition (Fallback): Ensuring the Vehicle Can Transition to a Safe Stop**

Vehicles with lower levels of automation rely on a human driver to take back control if a situation on the road becomes too complex for the technology to handle, or if the technology itself fails. As a fully self-driving system, Waymo's technology must be robust enough to handle these situations on its own.

If our self-driving vehicle can no longer proceed on a planned trip, it must be capable of performing a safe stop, known as a "minimal risk condition" or fallback. This might include situations when the self-driving system experiences a problem, when the vehicle is involved in a collision, or when environmental conditions change in a way that would affect safe driving within our operational design domain.

Waymo's system is designed to detect each one of these scenarios automatically. In addition, our vehicles run thousands of checks on their systems every second, looking for faults. Our system is equipped with a series of redundancies for critical systems, such as sensors, computing, and braking. How our vehicle responds varies with the type of roadway on which a situation occurs, the current traffic conditions, and the extent of the technology failure. Depending on these factors, the system will determine an appropriate response to keep the vehicle and its passengers safe, including pulling over or coming to a safe stop. [15]

## **Our Vehicles' Redundant Safety-Critical Systems**



### **Backup Computing**

A secondary computer in the vehicle is always running in the background and is designed to bring the vehicle to a safe stop if it detects a failure of the primary system.



### **Backup Braking**

If the primary braking system fails, we have a full secondary braking system that immediately kicks in. Either braking system can bring the vehicle to a safe stop if a failure occurs in the other.



### **Backup Steering**

The steering system features a redundant drive motor system with independent controllers and separate power supplies. Either one can manage steering in the case that a failure occurs in the other.



### **Backup Power Systems**

Independent power sources are provided for each of the critical driving systems. These independent power sources ensure that our vehicles' critical driving components remain online during single power failures or circuit interruptions.



### **Backup Collision Detection and Avoidance System**

Multiple backup systems—including independent collision avoidance systems—constantly scan the road immediately ahead and behind the vehicle for objects such as pedestrians, cyclists, and other vehicles. These redundant systems slow or stop the vehicle in the rare event that the primary system does not detect or respond to objects in the path of the vehicle.



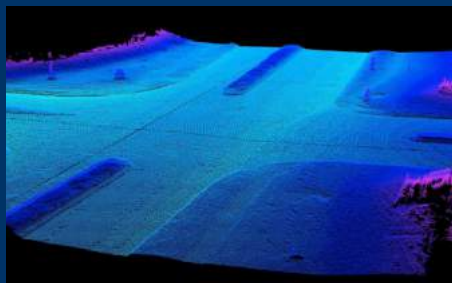
### **Redundant Inertial Measurement Systems for Vehicle Positioning**

Redundant inertial measurement systems help the vehicle accurately track its motion along the road. These two systems cross-check each other and assume control from one another, if a fault is detected in either system.

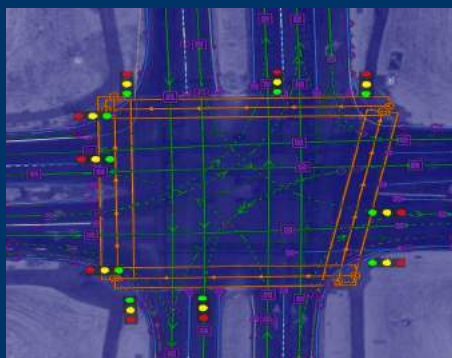


## How We Build a Map for a Self-Driving Vehicle

Before our vehicles are introduced on the road, our mapping team first uses our sensors on test vehicles to create highly detailed 3D maps. These maps are distinct from basic satellite imagery or online maps. Instead, Waymo's maps provide our vehicle with a deep understanding of the physical environment: road types, the distance and dimensions of the road itself, and other topographical features.



We take this data and add salient information that includes traffic control information such as the lengths of crosswalks, the locations of traffic lights, and relevant signage.



With our maps installed onboard our vehicle, our system can then focus on the parts of the environment that change dynamically around it, such as other road users. Our system can detect when a road has changed by cross-referencing the real-time sensor data with its on-board 3D map. If a change in the roadway (e.g., a collision up ahead that closes an intersection) is detected, our vehicle can re-route itself within the system's operational design domain and alert our operations center so that other vehicles in the fleet can avoid the area. In this case, the maps not only serve as an added reference point to our software, but also provide important feedback to our system.

These detailed custom maps give us a comprehensive understanding of the conditions in every location where we drive. When coupled with our deep knowledge of the capabilities of our system, they help us ensure that our vehicles operate only within their operational design domain.

---

## Data Recording and Post-Crash Behavior

Waymo's self-driving technology never stops improving. Waymo has a robust system for collecting and analyzing data from encounters we have on the road. [16] Anything we learn from the experience of one vehicle, we apply to our entire fleet.

Waymo's system can detect when it has been involved in a collision and will notify our Waymo operations center automatically. There our trained specialists can initiate post-crash procedures, which include procedures for interacting with law enforcement and first responders, and for sending members of our team on location. Our operations center also has rider support specialists, who can communicate directly with our passengers through our in-vehicle audio system.

Following a collision, we're able to analyze all available data, including video and other sensor data, to evaluate factors that may have contributed to the incident, and we're able to make any appropriate software changes and update every vehicle in our fleet accordingly. Any damage our vehicles sustain in a collision is repaired and the vehicles are tested for safety before they return to the road.

## Self-Driving Vehicle Cybersecurity

Waymo has developed a robust process to identify, prioritize, and mitigate cybersecurity threats. Our security practices are built on the foundation of [Google's Security](#) processes and are informed by publications like the [NHTSA Cybersecurity Guidance](#) and the Automotive Information Sharing and Analysis Center's (Auto-ISAC) [Automotive Cybersecurity Best Practices](#). To help develop future security best practices, Waymo has also joined the Auto-ISAC, an industry-operated initiative created to enhance cybersecurity awareness and collaboration across the global automotive industry.

## Waymo's Approach to Security

1

**Build Verifiable Software and Systems**

2

**Encrypt and Verify Channels of Communication**

3

**Build Redundant Security Measures for Critical Systems**

4

**Limit Communication Between Critical Systems**

5

**Provide Timely Software Updates**

6

**Model and Prioritize Threats**

---

We complete a comprehensive review of all potential security access points to our self-driving system from both the interior and exterior of the physical vehicle, and take steps to limit the number and function of those access points.

This begins by collaborating with our OEM partners at the onset to identify and mitigate vulnerabilities of the base vehicle. Our software and vehicle design processes take full account of known threats to ensure that our system and vehicle designs are protected against them. New software releases go through an extensive peer review and verification process. Our hazard analysis and risk assessment processes have been designed to identify and mitigate risks that might affect safety, including those related to cybersecurity.

In our design, safety-critical aspects of Waymo's vehicles—e.g. steering, braking, controllers—are isolated from outside communication. For example, both the safety-critical computing that determines vehicle movements and the onboard 3D maps are shielded from, and inaccessible from, the vehicle's wireless connections and systems.

We also consider the security of our wireless communication. Our vehicles do not rely on a constant connection to operate safely. While on the road, all communications (e.g., redundant cellular connections) between the vehicles and Waymo are encrypted, including those between Waymo's operations support staff and our riders. Our vehicles can communicate with our operations center to gather more information about road conditions, while our vehicles maintain responsibility for the driving task at all times.

These protections help prevent anyone with limited physical access to our self-driving vehicles, whether passengers or malicious actors nearby, from impairing or altering their security. We have diverse mechanisms for noticing anomalous behavior and internal processes for analyzing those occurrences. Should we become aware of an indication that someone has attempted to impair our vehicle's security, Waymo will trigger its company-wide incident response procedure, which involves impact assessment, containment, recovery, and remediation.

# Testing and Validation Methods

ENSURING OUR VEHICLES ARE CAPABLE AND SAFE



**Waymo’s technology undergoes extensive testing—on the road, in closed courses, and in simulation—so that every part of our system is capable, reliable, and safe when operating within its design domain.**

Waymo’s self-driving vehicles consist of three primary subsystems that are individually and rigorously tested:

1. The base vehicle, as certified by the OEM
2. Our in-house hardware, including sensors and computers
3. Our self-driving software that makes all the driving decisions

Each of these subsystems is then combined to form a fully integrated self-driving vehicle, which is then further tested and validated. Collectively testing the hardware and software ensures that our overall self-driving vehicle meets all the safety requirements that we have set for our system.



## Building a Safe and Reliable Supply Chain

Waymo works directly with our suppliers and subcontractors on the performance, safety, quality, and reliability requirements of system components. We include those suppliers in the Failures Modes and Effects Analysis (FMEA) and risk assessment processes as we work to identify potential risks associated with manufacturing processes, stand-alone components, or components when integrated with other subsystems. We monitor the performance of components in our products during manufacturing, and conduct ongoing reliability testing to make sure they meet design expectations and safety requirements before being integrated into our vehicles.

## Testing At Every Level

Our multi-layered approach to safety is influenced by the same systems engineering processes used by NASA to launch the *Mars Rover* – a self-driving vehicle that operates millions of miles from Earth.

This approach means we analyze and test our system at the lowest component level to ensure the performance and reliability of our most critical systems. For example, our vision [camera] system alone is subjected to over a hundred separate tests in our labs before a single vehicle with this technology leaves our garage.

First we perform tests on every component: we examine the individual cameras that will make up the vision system, as well as parts like cables and connectors, to determine that each works to designed specifications. Then we test again once the cameras are fully integrated. Each camera is assembled into a ring formation and we calibrate them to work together, checking that the angle and orientation of each camera combines to give a complete 360-degree view. Then we test the vision system as a whole. The assembled camera ring is added to the self-driving system and our engineers run tests to ensure our different sensors work cohesively as one.

Before we operate a single vehicle on public roads with this new vision system, we perform another level of tests, confirming that the vision system is doing its job, performing tasks like seeing traffic lights in a variety of lighting conditions, detecting pedestrians, and spotting construction cones.

Only then is this vision system, as part of our self-driving vehicle, ready for the road.

---

## Base Vehicle Safety

Waymo's current generation self-driving vehicle is a modified version of the 2017 Chrysler Pacifica Hybrid Minivan, into which we have integrated our self-driving system. The modified 2017 Chrysler Pacifica Hybrid Minivans that Fiat Chrysler Automobiles ("FCA") has sold to us have been certified by the manufacturer as compliant with all applicable Federal Motor Vehicle Safety Standards (FMVSS), which standards regulate the safety performance requirements for motor vehicles or items of motor vehicle equipment in the U.S.

## Self-Driving Hardware Testing

Through a technical collaboration between FCA and Waymo, we engineered and integrated Waymo's self-driving system, including our self-driving sensors and hardware, with the modified Chrysler Pacifica Hybrid Minivans provided by FCA. To ensure that we have properly integrated our self-driving system into the Chrysler Pacifica Hybrid Minivans that make up our fleet, Waymo has performed thousands of additional tests on top of those completed by FCA. These tests are completed at our private test tracks, in our labs, and in simulation, and are used to evaluate each safety function of the vehicle, from brakes and steering to physical vehicle controls like locks, headlights, and doors. With these tests, we can ensure that the vehicle operates safely in manual mode, self-driving mode with a test driver at the wheel, and fully self-driving mode without a person inside the vehicle. Overall, this testing seeks to ensure that our vehicle continues to function safely after the addition of our self-driving system.



---

## Self-Driving Software Testing

Like our hardware, our self-driving software is guided by our *Safety by Design* philosophy. We constantly and rigorously test the individual components of the software—including perception, behavior prediction, and planner—as well as the software as a whole.

Our technology is constantly learning and improving. Each change of our software undergoes a rigorous release process. We update our software regularly for different operational design domains. Each update is tested through a combination of simulation testing, closed course testing, and driving on public roadways:



### Simulation Testing:

In simulation, we rigorously test any changes or updates to our software before they're deployed in our fleet. We identify the most challenging situations our vehicles have encountered on public roads, and turn them into virtual scenarios for our self-driving software to practice in simulation.



### Closed-Course Testing:

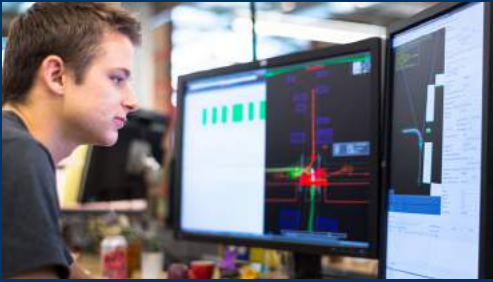
New software is pushed to a few vehicles first so that our most experienced drivers can test the new software on our private test track. We can use different releases of software for different vehicles so that we can test new or specific features within different operational design domains.



### Real-World Driving:

Once we confirm that our software is working as intended, we begin introducing the new software to our vehicles on public roads. We start small—our self-driving vehicles must show they can safely and consistently travel a predetermined route—and then we push the software update to our entire fleet. The more miles we travel on public roads, the more opportunities to monitor and assess the performance of software.

As we drive more road miles, we continue to further refine our driving and update our software. This continual feedback loop allows us to build confidence that our software reacts and responds appropriately in the operational design domain, enabling our vehicle to operate at SAE Level 4 safely.



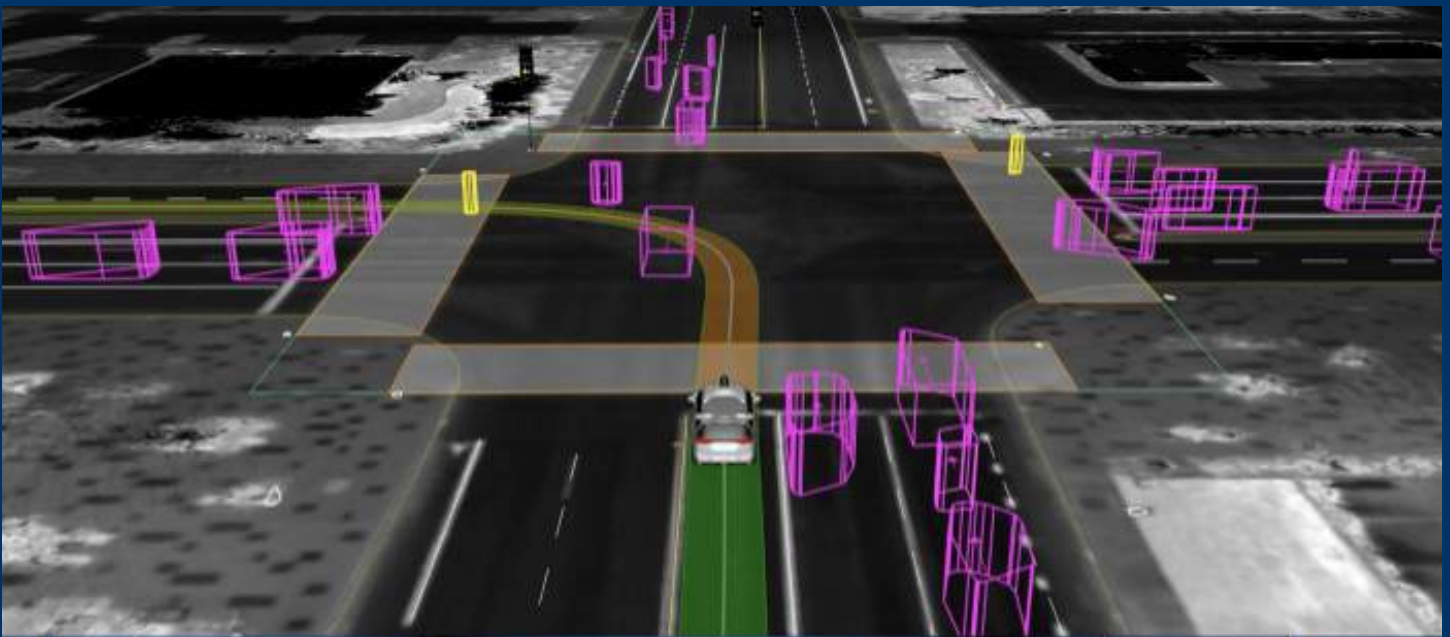
Waymo engineers build virtual scenarios that allow our self-driving vehicles to drive up to 8 million simulated miles each day.

## Simulation: How the Virtual World Helps Our Cars Learn Advanced Real-World Driving Skills

Waymo's simulator can replay the real-world miles we have driven with each new software version, but also can build completely new realistic virtual scenarios for our software to be tested against. Each day, as many as 25,000 virtual Waymo self-driving vehicles drive up to eight million miles in simulation, refining old skills and testing out new maneuvers that help them navigate the real world safely.

For example: at the corner of South Longmore Street and West Southern Avenue in Mesa, Arizona, there's a flashing yellow arrow for left turns. This type of intersection can be tricky for humans and self-driving vehicles alike—drivers must move into a five-lane intersection and then find a gap in oncoming traffic. A left turn made too early may pose a hazard for oncoming traffic; a turn made too late may frustrate drivers behind.

Simulation lets us turn a single real-world encounter like this into thousands of opportunities to practice and master a skill.



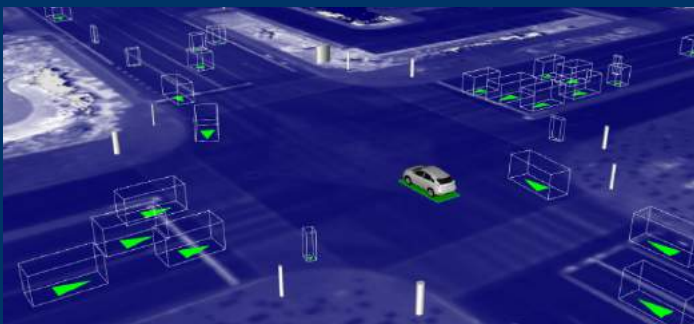
Our self-driving vehicle encounters a flashing yellow left turn arrow in Mesa, Arizona.



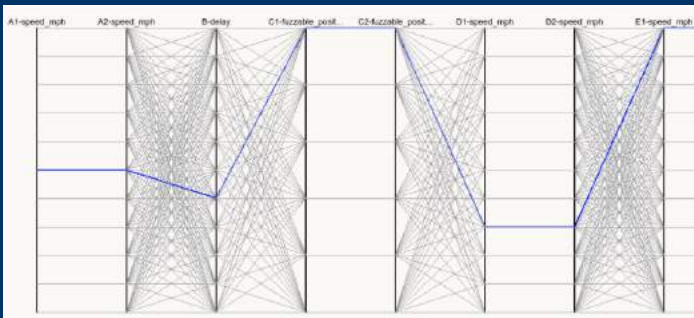
# How Simulation Works



We can recreate a highly-detailed, realistic virtual version of the East Valley.



In simulation, we can practice driving the same intersection, in the same driving conditions thousands of times, with different vehicles from our fleet. In this image, we're simulating driving the intersection with one of our Lexus vehicles.



Through a process called fuzzing, we can alter the speed, trajectory and position of objects on these virtual streets.



To make a scene more complex, we can add vehicles, pedestrians and cyclists that never existed in the original scene.

## Step 1: Start with a Highly-Detailed Vision of the World

Using a powerful suite of custom-built sensors, we build a virtual replica of the intersection, complete with identical dimensions, lanes, curbs, and traffic lights. In simulation, we can focus on the most challenging interactions—flashing yellow signals, wrong-way drivers, or nimble cyclists—rather than on monotonous highway miles.

## Step 2: Drive, Drive, and Redrive

With this flashing yellow left turn now digitized in our virtual world, our software can practice this scenario thousands of times over. Every time we update the software, we can test the change at the same intersection in a variety of driving conditions. That's how we were able to teach our vehicles to naturally inch forward at that flashing yellow light, and slot in after oncoming traffic. What's more, in simulation we can practice this new skill on every flashing yellow arrow we have ever come across, in order to improve our software even faster.

## Step 3: Create Thousands of Variations

Next, we can multiply this one tricky left turn to explore thousands of variable scenarios and “what ifs?” Through a process called fuzzing, we alter the speed of oncoming vehicles and the timing of traffic lights to make sure our vehicles can still find a safe gap in traffic. The scene can be made busier and more complex by adding simulated pedestrians, motorcycles “splitting the lane,” or even joggers zig-zagging across the street—all to see how that might change our driving.

## Step 4: Validate and Iterate

Success: Our self-driving vehicle has learned how to turn confidently at a flashing yellow arrow. That new skill becomes part of our permanent knowledge base, shared with every vehicle across the fleet. In turn, we'll use real-world driving and our private closed course testing facility to validate our simulated experience. And then the cycle begins again. Each of these eventful simulator miles is guiding us to what everyone wants: billions of safe and uneventful miles in the real world.



## Field Tests at Our Closed-Course Facility

Waymo has set up a private, 91-acre, closed-course testing facility in California specially designed and built for our own unique testing needs. This private facility, nicknamed “Castle,” is set up like a mock city, including everything from high-speed roads to suburban driveways to a railroad crossing. Our team uses this and other closed-course facilities to validate new software before it’s released to our fleet of vehicles on the road, and also to stage challenging or rare scenarios so our vehicles gain experience with unusual situations.

On our closed course, we’re able to conduct thousands of “structured tests” which recreate specific scenarios for learning and testing. To power our simulator, we’ve developed more than 20,000 simulation scenarios at Castle. Each recreates a driving situation we want to practice—an aggressive driver barreling out of a driveway, or a pedestrian suddenly emerging from a parked car—that might take hundreds of thousands of driving miles to encounter on public roads. We’ve staged people jumping out of canvas bags or porta potties on the side of the road, skateboarders lying on their boards, and thrown stacks of paper in front of our sensors. This “structured testing” is key to accelerating the progress of our technology and ensuring safety of our vehicles in both everyday and challenging driving situations.

---

## Behavioral Competencies for Normal Driving

A fully self-driving vehicle must be able to handle all the everyday driving tasks expected of human drivers within the same operational design domain. This means self-driving systems need to demonstrate they have the adequate skills—or “behavioral competencies”—required for the intended locations and conditions of operation.

The U.S. Department of Transportation has recommended that Level 3, Level 4, and Level 5 self-driving vehicles should be able to demonstrate at least 28 core competencies adapted from research by [California Partners for Advanced Transportation Technology \(PATH\)](#) at the Institute of Transportation Studies at University of California, Berkeley. DOT also encourages companies “to consider all known behavioral competencies in the design, test, and validation” of a self-driving system.

Waymo’s safety program has expanded the 28 core competencies in both breadth and depth, for which we test thousands of scenario variations—ranging in complexity—ensuring that our system can safely handle the challenges of real-world environments. In addition, we have identified further categories that expand upon the initial 28 core competencies. [17] (For a subset of Waymo’s behavioral competencies, see [Appendix A.](#))

For each competency, Waymo’s team creates a wide variety of individual tests to run on our closed course facility and in simulation. For example, to test our ability to make unprotected left turns, we stage dozens of real-life situations and test to see if our vehicles respond appropriately. We include challenging variations of this common road maneuver, including using multiple lanes of oncoming traffic, obstructing our vehicle’s field of view with a large truck, or providing a short green traffic light to make the turn.

For each of these scenarios we then use our simulator to create hundreds of different variations of the same encounter. With our virtual world testing, we can also create entirely new scenarios of unprotected left-hand turns so we can test this skill further. As we expand our operational design domain, the number of core competencies may grow (for example, to drive in northern U.S. states year-round, our system must be able to safely drive in snow) and the number of tests within each category may expand with more unique or complex scenarios.

While this type of scenario testing can demonstrate our software’s core driving skills, these competencies need to translate out into the real world. That’s why this acts merely as a starting point: our validation then moves onto testing our vehicle, hardware, and software as an integrated fully self-driving vehicle on public roads, where it demonstrates these competencies daily in real traffic situations.



---

## Testing the Fully Integrated Self-Driving Vehicle

After testing the base vehicle, the self-driving system, and the software individually, we then test the fully integrated self-driving vehicle. This includes closed-course collision avoidance testing, reliability and durability testing, and on-road testing with trained test drivers at the wheel.

### Testing on Public Roads

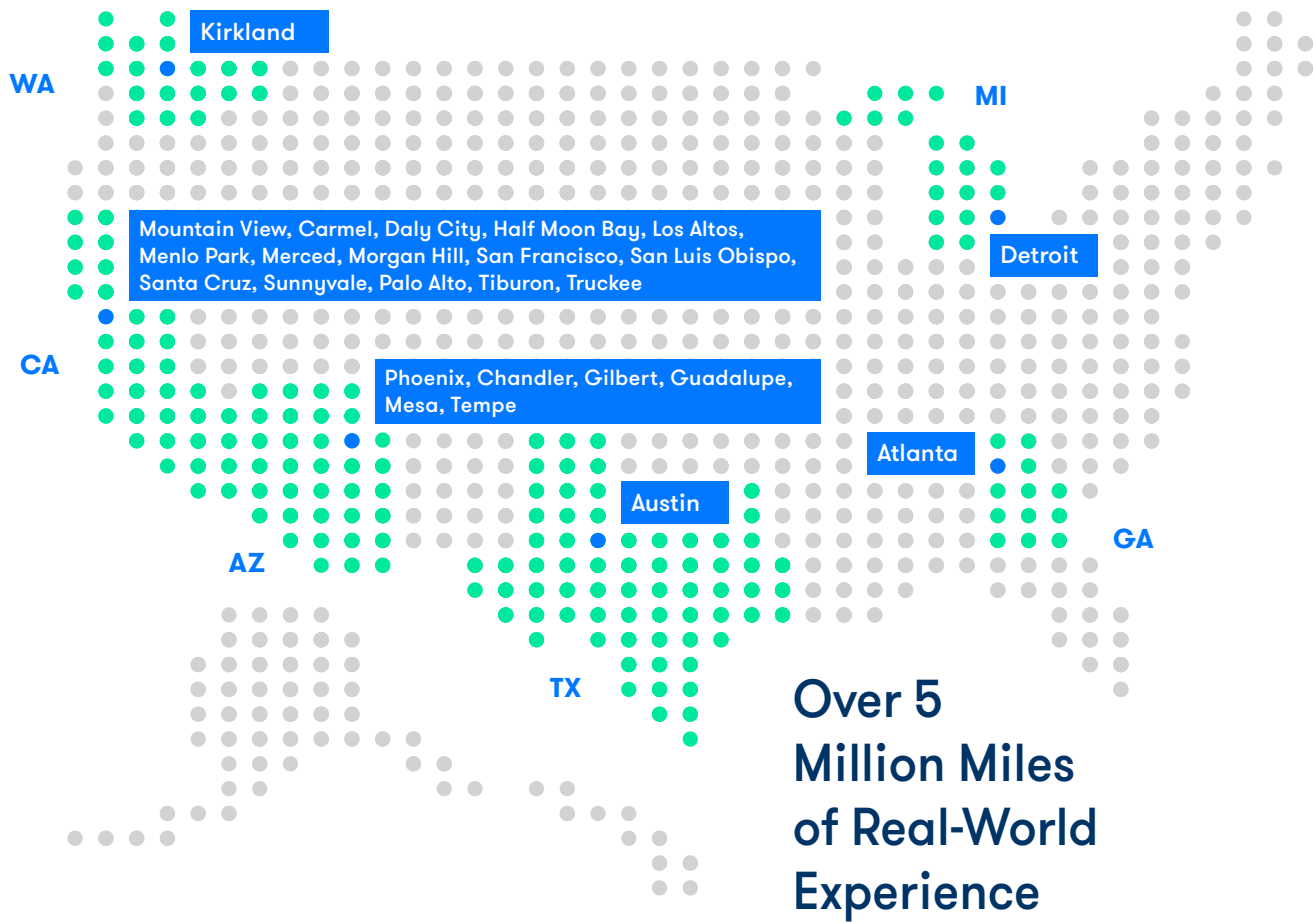
Waymo has a comprehensive on-road testing program that has been improved and refined continuously over our nine-year history. It's a critical step that allows us to validate the skills we have developed, uncover new challenging situations, and develop new capabilities.

The safety of our on-road testing program begins with highly-trained drivers. Our test drivers undergo extensive classroom training, learning about the overall system and how to monitor the vehicle safely on public roads, including taking defensive driving courses. After this training, our drivers are responsible for monitoring the system and if needed, taking control of the vehicle while we test on public roads.

Our on-road testing program drives tens of thousands of weekly miles that are used to evaluate our software. We monitor our systems to ensure they demonstrate our behavioral competencies, and we look for situations where we can build on these competencies and enable smoother driving.

Real-world testing provides a continuous feedback loop that lets us refine our system continually. Our engineers observe real-world situations, make adjustments to the software to refine our driving, and then implement those changes. This iterative approach to testing and public-road validation helps us safely scale our capabilities as we expand our operational design domain and the capabilities of our vehicles.





### Real-World Experience

Over the last nine years, Waymo has tested our vehicles in six U.S. states and self-driven in more than 25 cities—from sunny Phoenix, AZ to rainy Kirkland, WA—accumulating more than 5 million autonomous miles in the process. As we expand to new locations, we’re able to gather a wider variety of experience with different road environments, streetscapes, and driver habits.

For example, driving in Phoenix has allowed us to test our sensors and software in desert conditions, including extreme temperatures and dust in the air. We learned how to navigate more confidently around new types of vehicles, like watering trucks that move 3 mph on 45 mph roads while spraying plants in road medians. Austin provided horizontal traffic signals for the first time, while Kirkland gave us more wet weather practice.

In every new city, we meet people who aren’t used to seeing self-driving cars every day. That lets us also hear fresh perspectives from diverse populations—how people want to use self-driving vehicles, what they think of our driving, and more—who together inform how we develop and refine our self-driving technology.



## Self-Driving in Extreme Temperatures

Our self-driving vehicles need to operate reliably and safely in extreme cold and oppressive heat. Waymo engineers have developed both our self-driving hardware and software in-house to create a complete system that can work reliably in the toughest environments.

Heat poses challenges for all modern technology. Everyday electronics like cell phones can overheat and switch off when used in the bright sun. However, our self-driving system needs to operate safely even in hot conditions. Our cars are equipped with a special cooling system that lets them operate under very hot temperatures, even with an engine running at full power and systems at full capacity.

Our engineers perform extensive testing in a wind tunnel that can mimic almost any weather condition, including the hottest temperatures ever recorded on Earth.

In addition to wind tunnel testing, we have tested our self-driving vehicle in three of America's hottest places: Las Vegas, Davis Dam, and Death Valley. The Davis Dam, on the Arizona and Nevada border, has long stretches of steep desert road for us to drive under the hot sun. The Las Vegas Strip lets us test our systems in countless busy lanes of stop-and-go city traffic under intense heat. Death Valley holds the record for the highest officially recorded temperature on Earth of 134°F.

During testing we closely monitor our systems, taking over 200 different measurements per second to confirm that our in-house sensor suite and compute keeps working as intended.



## Testing Crash Avoidance Capabilities

In addition to testing core behavioral competencies, our engineers also conduct crash avoidance testing across a variety of scenarios. (To view a subset of Waymo's crash avoidance test scenarios, see [Appendix B.](#))

Waymo has completed thousands of crash avoidance tests at our private test track. Each of these individual tests recreates a distinct driving scenario and allows us to analyze our vehicles' response. We then use our simulator to test these scenarios further and improve our overall software capabilities.

We draw from a variety of sources to learn which collisions to test against. They include our own analysis of sources such as NHTSA's fatal crash data base, and use of our extensive experience operating self-driving vehicles to expand on NHTSA's 37 pre-crash scenarios. We also test situations in which other road users create potentially dangerous situations, such as vehicles suddenly pulling out of driveways, large vehicles cutting across target lanes, motorcyclists weaving through traffic, and pedestrians jaywalking.

In 2015, NHTSA published data showing the distribution of the most common pre-crash scenarios. For example, just four crash categories accounted for 84% of all crashes: rear end crashes, vehicles turning or crossing at an intersection, vehicles running off the edge of the road, and vehicles changing lanes. Therefore, avoiding or mitigating those kinds of crashes is an important goal for our testing program. [18]



Crash avoidance testing at Waymo's closed course testing facility, Castle.

---

### **Hardware Reliability and Durability Testing**

Self-driving vehicles, like their conventional counterparts, must operate reliably. That means the vehicle and each of its individual components must function under extreme environmental conditions and over the lifetime of the vehicle.

Waymo engineers design unique stress tests. Using our knowledge of the physics of failure to accelerate environmental stresses on our vehicle and its individual components, we compress years of real-world use into days and weeks of testing.

We blast our components with ultraviolet radiation, bombard them with powerful water jets, dunk them into nearly freezing vats of water, corrode them in chambers full of salty mist, shake and shock them with powerful vibrations, and heat and freeze them for weeks at a time in temperature and humidity chambers. We analyze any failures and make design improvements to increase the reliability of our components. We monitor the health of each sensor, and the vehicle itself, so we can identify and fix potential failures before they occur.







# Interacting Safely with the Public

## Waymo's Early Rider Program

We want to learn how a self-driving vehicle could fit into people's every day transportation needs—whether that's as a personal use vehicle, as a ride-share, or to make public transit more accessible. That's why in April 2017, we launched our early rider program, the first public trial of our self-driving vehicles, in the Phoenix metropolitan area.

Our riders come from all walks of life, from families with teenage kids to young professionals. They're using our vehicles for everyday activities—from commuting to work to taking the kids to soccer practice. Educating our early riders on how to use our vehicles is critical. Our research team works with each new rider to provide them with information about the program and how to use our vehicles, and also how to provide feedback.

For the last 100 years, vehicles have been designed with a human driver in mind. The experiences of our early riders will teach us about how people want to interact with our vehicles, and what it's like to ride as a passenger instead of a driver. Their experiences will help us create an in-car experience that is even more intuitive and easy-to-use.

## Our vehicles are designed to drive themselves, so our user interface focuses on passengers, not drivers.

That's why we've developed specific in-car features and user interfaces that help our passengers understand what our vehicles are doing on the road and let them do things like set a destination, ask the vehicle to pull over, and get in touch with Waymo support staff as needed. We also understand the transportation challenges that exist today, especially around accessibility, and we are working to develop solutions that work for riders of all abilities.

In addition to creating a safe and intuitive everyday ride for our passengers, Waymo has also developed procedures in case of emergency. For example, not only are our vehicles designed to detect collisions and respond appropriately to emergency vehicles on the road, but we have also conducted trainings with law enforcement and first responders who may come into contact with our vehicles.

Finally, the potential of self-driving cars will only be realized by growing public awareness and acceptance of this technology. In October 2017, Waymo helped to launch *Let's Talk Self-Driving* ([letstalkselfdriving.com](http://letstalkselfdriving.com)), the world's first public education campaign about fully self-driving vehicles. Working in partnership with national and local safety, mobility, and seniors groups, the initiative hopes to engage and educate the public about how this technology works and the enormous benefits self-driving technology could unlock.

## Making Waymo's Vehicles Easy to Use



### Display

The Waymo passenger display screen shows important trip information such as destination and time to arrival. It also visualizes static road elements like traffic lights, stop signs, and dynamic agents in the environment such as vehicles, cyclists, and pedestrians. That way, riders can understand what the vehicle is perceiving and responding to, and be confident in the vehicle's capabilities.



### Start Ride Button

Riders can start the ride whenever they're ready, using the mobile app or a button inside the vehicle.



### Pull Over Button

The vehicle features a "Pull Over" button for its riders. When pressed, the vehicle will identify the nearest location to safely pull over so that the rider can exit the vehicle before their original destination.



### Mobile App

Participants in Waymo's early rider program use a mobile app to request a ride in a Waymo vehicle to their intended destination. The app also allows users to give ride feedback and contact Waymo's rider support.



### Rider Support Team

Waymo has created a rider support team to help answer questions for our early riders. These specialists can be reached with a button-press inside the vehicle or by calling or chatting with our rider support team from the mobile app. Our rider support specialists can speak with riders during the regular course of a trip or assist in case of an emergency.

## Rider Experience

Waymo's user experience is guided by four main principles: give passengers the information they need for a seamless trip; help passengers anticipate what's next; proactively communicate the vehicle's response to events on the road; and help passengers engage safely with the vehicle.

Audio and visual information provided to passengers helps them know what to expect, reminds them of safety features such as seat belts, and permits them to communicate with Waymo's rider support personnel.

We also want our passengers to be aware of what the vehicle is perceiving, and why it is taking specific actions. Each vehicle also provides occupants with useful visual and audio information throughout the trip, to help them understand what the vehicle and other road users around it are doing. In Waymo's self-driving minivans, the in-vehicle screens are used to provide visual ride information, such as destination, current speed, and the route the vehicle intends to take. An audio system provides audible notifications and cues to all riders.

In the event of a safety-critical event, the screens and audio system are designed to provide the occupant with specific visual and audio cues depending on the nature of the event. We've designed multiple ways for our riders to interact with our vehicle, whether it's through the pressing of physical buttons, a mobile app, or by speaking with a Waymo rider support specialist.

## Accessibility Features In Development

### An Accessible Mobile App:

We're building our mobile app to be intuitive and accessible. It's designed for use with Android TalkBack, iOS VoiceOver, and other accessibility services.

### Audio Cues and Tools:

Visually impaired riders may need help locating our vehicles at their pickup locations. We're exploring specific "wayfinding" features, including ways that these riders can ask their vehicle to make a sound to help guide them to the vehicle. Additional audio cues can be turned on in the mobile app and will be available in the vehicle to keep the rider informed of their journey.

### Braille Labels:

The ride buttons in our self-driving vehicles are accompanied by Braille to allow vision-impaired riders to start the ride, pull over the vehicle, or call to speak to an operator who can provide further assistance and information. These buttons are also available in the mobile app.

### Visual Display:

Through every phase of the ride, deaf and hearing-impaired riders will have access to on-screen visual cues of what is happening around the vehicle.

### Accessible Rider Support:

Our chat-based rider support will be available to all riders of all abilities through visual displays or audio inside the vehicle.

## Accessibility: Unlocking Opportunities for Those Who Cannot Drive Today

We believe our technology holds the potential to improve safety and mobility for people around the world. From the start, Waymo has been listening to and working with the disability community. We continue to learn about the unique needs of different riders, and what we learn will inform new features that will make the experience accessible to people who have historically had to rely on others to get around.

We also know we can't reach our goals alone. Waymo is committed to working with our partners to identify vehicle platforms and solutions that can serve a broader set of individuals.







## Testing with the Chandler Arizona Police Department

We've collaborated with the Chandler Police and Fire departments in Arizona to conduct emergency vehicle testing with our self-driving minivans. Our powerful suite of sensors, including our long-range audio detection system, observed local police vehicles, motorcycles, ambulances, firetrucks, and undercover vehicles as they trailed, passed, and led our vehicles. Our sensors collected samples at various speeds, distances, and angles—building up a library of sights and sounds that will help our vehicles respond safely to emergency vehicles on the road.

---

## Emergencies and Interacting With Law Enforcement and First Responders

Our self-driving vehicles are designed to interact with law enforcement and first responders safely on road. Using our suite of custom-built sensors, including an audio detection system, our software can identify a nearby fire truck, detect its flashing lights, and hear sirens up to hundreds of feet away. Our audio sensors are designed to discern the direction sirens are likely coming from, improving our vehicles' ability to respond in both a safe and timely manner. Once an emergency vehicle is detected, our vehicle can respond by yielding, pulling over to the side of the road, or coming to a complete stop.

Waymo also briefs local authorities in every city in which we test, and offers a line of communication for further engagement. In some cities, Waymo has also conducted on-site training to help police and other emergency workers identify and access our vehicle in emergency situations. We plan to continue conducting these on-site trainings, while expanding the scope of the training program as our vehicles become more capable and our operational design domain expands.



# Conclusion

For more than nine years, Waymo has focused on one thing: bringing fully self-driving technology to the world. We are committed to *Safety By Design*, and we have built a culture that puts safety, and open communication about safety, at its core. All of us at Waymo are committed to the goal of making it safe and easy for people and things to move around.

This report summarizes our efforts to ensure the safe deployment of fully self-driving vehicles that use Waymo technology. We are excited about the potential this technology holds to improve road safety and provide new mobility options for the world. For further information about Waymo's self-driving technology, please visit [www.waymo.com](http://www.waymo.com).

# Scenario Types Used for Testing and Validation

Waymo tests our vehicles comprehensively to ensure that they are capable of operating safely in reasonably foreseeable scenarios that could present a safety hazard.

The following types of scenarios are illustrative of the breadth of our testing program and are designed to ensure our vehicles have: 1) basic behavioral competencies and 2) the ability to avoid or mitigate crashes in common crash scenarios.



## Appendix A. Basic Behavioral Competency Testing

We believe that our fully self-driving vehicles should be able to successfully demonstrate competency in a variety of reasonably foreseeable traffic situations that are within the vehicle’s operational design domain. Our system can recognize and stay within its design domain, and the set of competencies expands or shrinks in accordance with the scope of each operational design domain. For each behavioral competency shown in the table below, we test a wide range of scenarios with variations in factors such as road configuration, the speed of our vehicle or other vehicles, and lighting conditions.

Set of Behavioral Competencies Recommended by NHTSA	
1	Detect and Respond to Speed Limit Changes and Speed Advisories
2	Perform High-Speed Merge (e.g., Freeway)
3	Perform Low-Speed Merge
4	Move Out of the Travel Lane and Park (e.g., to the Shoulder for Minimal Risk)
5	Detect and Respond to Encroaching Oncoming Vehicles
6	Detect Passing and No Passing Zones and Perform Passing Maneuvers
7	Perform Car Following (Including Stop and Go)
8	Detect and Respond to Stopped Vehicles
9	Detect and Respond to Lane Changes
10	Detect and Respond to Static Obstacles in the Path of the Vehicle
11	Detect Traffic Signals and Stop/Yield Signs
12	Respond to Traffic Signals and Stop/Yield Signs
13	Navigate Intersections and Perform Turns
14	Navigate Roundabouts
15	Navigate a Parking Lot and Locate Spaces
16	Detect and Respond to Access Restrictions (One-Way, No Turn, Ramps, etc.)
17	Detect and Respond to Work Zones and People Directing Traffic in Unplanned or Planned Events
18	Make Appropriate Right-of-Way Decisions
19	Follow Local and State Driving Laws

20	Follow Police/First Responder Controlling Traffic (Overriding or Acting as Traffic Control Device)
21	Follow Construction Zone Workers Controlling Traffic Patterns (Slow/Stop Sign Holders)
22	Respond to Citizens Directing Traffic After a Crash
23	Detect and Respond to Temporary Traffic Control Devices
24	Detect and Respond to Emergency Vehicles
25	Yield for Law Enforcement, EMT, Fire, and Other Emergency Vehicles at Intersections, Junctions, and Other Traffic Controlled Situations
26	Yield to Pedestrians and Bicyclists at Intersections and Crosswalks
27	Provide Safe Distance From Vehicles, Pedestrians, Bicyclists on Side of the Road
28	Detect/Respond to Detours and/or Other Temporary Changes in Traffic Patterns

### Examples of Additional Behavioral Competencies Tested by Waymo

29	Moving to a Minimum Risk Condition When Exiting the Travel Lane is Not Possible
30	Perform Lane Changes
31	Detect and Respond to Lead Vehicle
32	Detect and Respond to a Merging Vehicle
33	Detect and Respond to Pedestrians in Road (Not Walking Through Intersection or Crosswalk)
34	Provide Safe Distance from Bicyclists Traveling on Road (With or Without Bike Lane)
35	Detect and Respond to Animals
36	Detect and Respond to Motorcyclists
37	Detect and Respond to School Buses
38	Navigate Around Unexpected Road Closures (e.g. Lane, Intersection, etc.)
39	Navigate Railroad Crossings
40	Make Appropriate Reversing Maneuvers
41	Detect and Respond to Vehicle Control Loss (e.g. reduced road friction)
42	Detect and Respond to Conditions Involving Vehicle, System, or Component-Level Failures or Faults (e.g. power failure, sensing failure, sensing obstruction, computing failure, fault handling or response)
43	Detect and Respond to Unanticipated Weather or Lighting Conditions Outside of Vehicle's Capability (e.g. rainstorm)
44	Detect and Respond to Unanticipated Lighting Conditions (e.g. power outages)
45	Detect and Respond to Non-Collision Safety Situations (e.g. vehicle doors ajar)
46	Detect and Respond to Faded or Missing Roadway Markings or Signage
47	Detect and Respond to Vehicles Parking in the Roadway

## Appendix B. Avoidance or Mitigation of Common Crash Scenarios

Certain types of crashes account for a substantial percentage of all crashes. Avoiding or mitigating those kinds of crashes, therefore, is an important goal for our vehicle development program. In late 2015, NHTSA published data showing the distribution of pre-crash scenarios. [19]

### Four scenarios accounted for the vast majority of crashes:

- 29 percent of the vehicles were involved in rear-end crashes
- 24 percent of the vehicles were turning or crossing at intersections just prior to the crashes
- 19 percent of the vehicles ran off the edge of the road
- 12 percent involved vehicles changing lanes

Therefore, these scenarios figure prominently in the evaluation of our vehicles. The table below illustrates just a few of the test scenarios we employ to determine our vehicle’s ability to avoid or mitigate crashes in these all-important situations, as well as in other crash situations.

Crash Avoidance Category	Example Test Scenario
<b>Rear-end</b> Demonstrate ability to avoid or mitigate crashes with lead vehicles.	Fully self-driving vehicle approaches stopped lead vehicle
	Fully self-driving vehicle approaches disabled vehicle
	Fully self-driving vehicle approaches lead vehicle traveling at lower constant speed
	Fully self-driving vehicle approaches lead vehicle traveling at slower speed and initiating strong braking
	Fully self-driving vehicle approaches lead vehicle accelerating
	Fully self-driving vehicle following a lead vehicle making a maneuver (e.g. cutting into lane or pulling out of driveway)
	Fully self-driving vehicle approaches lead vehicle decelerating
	Fully self-driving vehicle approaches other vehicle(s) reversing
	Fully self-driving vehicle approaches other vehicle(s) parking
<b>Intersection</b> Demonstrate ability to detect vehicle entering path at perpendicular angle and apply brakes.	Fully self-driving vehicle approaches protected intersection, Vehicle A approaches from right
	Fully self-driving vehicle approaches protected intersection, Vehicle A approaches from left
	Fully self-driving vehicle prepares to turn across unprotected intersection, oncoming Vehicle A approaches
	Crossing path collisions - other vehicle running red light
	Crossing path collisions - other vehicle running stop sign



Crash Avoidance Category (continued)	Example Test Scenario (continued)
<p><b>Road Departure</b> Demonstrate ability to steer clear of roadway edge and stay within lane.</p>	Fully self-driving vehicle travels down straight road (with or without prior vehicle maneuver)
	Fully self-driving vehicle travels down curved road (with or without prior vehicle maneuver)
	Fully self-driving vehicle travels down straight road with visible lane marking
	Fully self-driving vehicle travels down straight road with faded or missing lane marking
	Fully self-driving vehicle travels down curved road with visible lane marking
	Fully self-driving vehicle travels down curved road with faded or missing lane marking
	Fully self-driving vehicle travels down wet road with lane marking
	Fully self-driving vehicle approaches other vehicle(s) reversing
	Fully self-driving vehicle travels down wet road with faded or missing lane marking
<p><b>Lane Change</b> Demonstrate ability to avoid or mitigate crash when other vehicles make lane changes or merge.</p>	Lane changes - other vehicles turning same direction
	Lane changes - other vehicles parking same direction
	Lane changes - other vehicles changing lanes same direction
	Lane changes - other vehicles drifting same direction
	Lane merges

However, we evaluate those capabilities in many more situations than those shown here. We have developed many additional test scenarios based on NHTSA’s overall pre-crash scenarios, our analysis of additional sources such as NHTSA’s fatal crash data base, and from our own extensive experience operating self-driving vehicles. [19]

## GLOSSARY

**Behavioral Safety.** An aspect of system safety that focuses on how a system should behave normally in its environment to avoid hazards and reduce the risk of mishaps: for instance, detect objects and respond in a safe way (slow down, stop, turn, lane change, etc.).

**California Partners for Advanced Transportation Technology (PATH).** A research and development program of the University of California, Berkeley, with staff, faculty, and students from universities worldwide and cooperative projects with private industry, state, and local agencies, and nonprofit institutions. See [www.path.berkeley.edu](http://www.path.berkeley.edu).

**Crash Safety.** An aspect of system safety that focuses on reducing the consequences of collisions by reducing the severity of the event as experienced by vehicle occupants or other road users.

**Dynamic Driving Task.** All of the real-time operational and tactical functions required to operate a vehicle in on-road traffic, excluding strategic functions such as trip scheduling and selection of destinations and waypoints.

**Fault.** An abnormal condition in the system. A fault might be triggered by hardware failures, software error detection, detection of off-nominal system performance, or other conditions defined within the diagnostics capability of the system.

**Functional Safety.** An aspect of system safety that focuses on how the system should detect and respond to failures, errors, or off-nominal performance of the self-driving system (e.g., fail operational, fail safe, or transition to a minimal risk condition).

**Hazard.** Any real or potential condition that can cause injury, illness, or death to personnel; damage to or loss of a system, equipment or property; or damage to the environment. (MIL-STD-882E).

**Hazard Analysis.** A process of identifying or recognizing hazards that may arise from a system or its environment, and analyzing their potential causes for the purpose of assessing risk and initiating actions necessary to reduce the risk to acceptable levels. Results of hazard analyses are also used to develop verification and validation approaches and procedures to demonstrate that hazard risks have been mitigated to acceptable levels.

**Manufacturer.** An individual or company that manufactures self-driving vehicles or equipment for testing and deployment on public roadways.

**Minimal Risk Condition.** A low-risk operating mode in which a fully self-driving vehicle operating without a human driver achieves a reasonably safe state, such as bringing the vehicle to a complete stop, upon experiencing a failure of the self-driving system that renders the vehicle unable to perform the entire dynamic driving task.

**Mishap.** An event or series of events resulting in death, injury, illness, or damage to property.

**Mishap Risk.** See Definition for Risk.

**Object and Event Detection and Response.** The perception by the system of any circumstance that is relevant to the immediate driving task, as well as the appropriate driver or system response to such a circumstance.

**Operational Design Domain.** A description of the specific operating conditions in which a self-driving system is designed to properly operate, including but not limited to roadway types, speed range, environmental conditions (weather, daytime/nighttime, etc.), and other domain constraints.

---

**Operational Safety.** An aspect of system safety that focuses on the interaction between our vehicles and passengers.

**Non-Collision Safety.** An aspect of system safety that focuses on physical non-collision hazards.

**Requirement.** A general term used to describe the set of statements that identifies a system's functions, characteristics, or constraints.

**Risk.** An expression of the possibility and impact of a [mishap](#) in terms of hazard severity and hazard probability of occurrence. It routinely reflects conditions such as personnel error, environmental conditions, design characteristics, procedural deficiencies, or subsystem or component failure or malfunction.

**SAE J3016.** "Taxonomy and Definitions for Terms Related to Driving Automation Systems for On-Road Motor Vehicles," published by SAE International in September 2016.

**Safety.** Freedom from those conditions that can cause death, injury, occupational illness, damage to or loss of equipment or property, or damage to the environment. (MIL-STD-882E).

**Safety Requirement.** 1) A system or subsystem requirement that is associated with a hazard mitigation or reduces the risk of an identified hazard. 2) A regulatory safety requirement generated from a governing agency. 3) Safety requirement derived from an industry standard or published best practice.

**Self-Driving System.** A Level 4 or 5 system which has hardware and software that are collectively capable of performing the entire dynamic driving task, without a human driver. This distinguishes it from Level 1, 2, or 3 systems that require a human driver.

**Fully Self-Driving Vehicle.** A vehicle equipped with a self-driving system designed to function without a human driver as a level 4 or 5 system.

**Subsystem.** 1) A grouping of items satisfying a logical group of functions within a particular system. (MIL-STD-882E) 2) A major part of a system which in itself has the characteristics of a system, usually consisting of several components.

**System.** 1) An integrated composite of people, products, and processes that provide a capability to satisfy a stated need or objective. (MIL-STD-882E) 2) The organization of hardware, software, material, facilities, personnel, data, and services needed to perform a designated function within a stated environment with specified results.

**System Safety.** 1) The application of engineering and management principles, criteria, and techniques to achieve acceptable [mishap risk](#), within the constraints of operational effectiveness and suitability, time, and cost, throughout all phases of a system life cycle. (MIL-STD-882E) 2) The optimum degree of safety within the constraints of operational effectiveness, time, and cost attained through specific application of [system safety engineering](#) throughout all phases of a system (McGraw Hill Dictionary of Technical Terms).

**System Safety Engineering.** 1) An engineering discipline that employs specialized professional knowledge and skills in applying scientific and engineering principles, criteria, and techniques to identify and eliminate hazards, in order to reduce the associated mishap risk. (MIL-STD-882E) 2) An element of systems management involving the application of scientific and engineering principles for the timely identification of hazards, and initiation of those actions necessary to prevent or mitigate hazards within the system.



## END NOTES

- [1] “Critical Reasons for Crashes Investigated in the National Motor Vehicle Crash Causation Survey.” National Highway Traffic Safety Administration, February 2015. <https://crashstats.nhtsa.dot.gov/Api/Public/ViewPublication/812115>
- [2] “Global Status Report on Road Safety 2015.” World Health Organization, 2015. [http://www.who.int/violence\\_injury\\_prevention/road\\_safety\\_status/2015/en/](http://www.who.int/violence_injury_prevention/road_safety_status/2015/en/)
- [3] “2016 Fatal Motor Vehicle Crashes: Overview.” National Highway Traffic Safety Administration, October 2017. <https://crashstats.nhtsa.dot.gov/Api/Public/ViewPublication/812456>; “Quick Facts 2015.” National Highway Traffic Safety Administration, May 2017 (updated). <https://crashstats.nhtsa.dot.gov/Api/Public/ViewPublication/812348>
- [4] “The Economic and Societal Impact Of Motor Vehicle Crashes, 2010.” National Highway Traffic Safety Administration, May 2014, DOT HS 812 013. <https://www-nrd.nhtsa.dot.gov/Pubs/812013.pdf>
- [5] “The Economic and Societal Impact Of Motor Vehicle Crashes, 2010.” National Highway Traffic Safety Administration, May 2015 (revised). <https://crashstats.nhtsa.dot.gov/Api/Public/ViewPublication/812013>
- [6] *ibid.*
- [7] Schrank, D., Eisele, B., Lomax, T., and Bak, J. “2015 Urban Mobility Scorecard.” The Texas A&M Transportation Institute and INRIX, August 2015. <https://static.tti.tamu.edu/tti.tamu.edu/documents/mobility-scorecard-2015.pdf>
- [8] “Quieter Cars and the Safety Of Blind Pedestrians: Phase I.” National Highway Traffic Safety Administration, April 2010. <https://www.nhtsa.gov/DOC/NHTSA/NVS/Crash%20Avoidance/Technical%20Publications/2010/811304rev.pdf>
- [9] Rosenbloom, Sandra. “The Mobility Needs of Older Americans: Implications for Transportation Reauthorization.” The Brookings Institution, July 2003. [https://www.brookings.edu/wp-content/uploads/2016/06/20030807\\_Rosenbloom.pdf](https://www.brookings.edu/wp-content/uploads/2016/06/20030807_Rosenbloom.pdf)
- [10] “MIL-STD-882E: Standard Practice: System Safety.” U.S. Department of Defense, 11 May 2012.
- [11] “ISO 26262: Road Vehicles – Functional Safety.” The International Organization for Standardization (ISO), 15 Nov 2011.
- [12] “Description of the SHRP 2 Naturalistic Database and the Crash, Near-Crash, and Baseline Data Sets.” Virginia Tech Transportation Institute (VTTI), April 2016. [https://vtechworks.lib.vt.edu/bitstream/handle/10919/70850/SHRP\\_2\\_CrashNearCrashBaselineReport\\_4-25-16.pdf?sequence=1](https://vtechworks.lib.vt.edu/bitstream/handle/10919/70850/SHRP_2_CrashNearCrashBaselineReport_4-25-16.pdf?sequence=1)
- [13] “SAE J3016. Taxonomy and Definitions for Terms Related to Driving Automation Systems for On-Road Motor Vehicles.” SAE International, September 2016.
- [14] “Federal Automated Vehicles Policy.” National Highway Traffic Safety Administration, September 2016. (See Safety Assessment notes on page 15.) <https://www.transportation.gov/AV/federal-automated-vehicles-policy-september-2016>
- [15] As NHTSA has noted: “A minimal risk condition will vary according to the type and extent of a given failure, but may include automatically bringing the vehicle to a safe stop, preferably outside of an active lane of traffic.” (See Automated Driving Systems 2.0 on page 8.)

---

**[16]** Crashes are reported consistent with state law and we cooperate with law enforcement under established legal process.

**[17]** "Input to NHTSA's Development of Guidelines for the Safe Deployment and Operation Of Automated Vehicle Safety Technologies." Google, Inc., May 2016. <https://drive.google.com/file/d/0Byq-WVq3Y4HEcWVvVjc3TXEwOEE/view?usp=sharing>

**[18]** "New Car Assessment Program (NCAP), 80 Fed Reg 78522 at 78552, December 16, 2015] <https://www.federalregister.gov/documents/2015/12/16/2015-31323/new-car-assessment-program>

**[19]** Our test scenarios are derived from multiple sources, including: Najm, W. G., Smith, J. D., and Yanagisawa, M. "DOT HS 810 767: Pre-Crash Scenario Typology for Crash Avoidance Research." National Highway Traffic Safety Administration, April 2007. [https://www.nhtsa.gov/sites/nhtsa.dot.gov/files/pre-crash\\_scenario\\_typology-final\\_pdf\\_version\\_5-2-07.pdf](https://www.nhtsa.gov/sites/nhtsa.dot.gov/files/pre-crash_scenario_typology-final_pdf_version_5-2-07.pdf)

Data from the NHTSA's Fatality Analysis Reporting System (FARS) database <https://www.nhtsa.gov/research-data/fatality-analysis-reporting-system-fars> and hazardous situations Waymo has encountered during our nine years of driving experience.