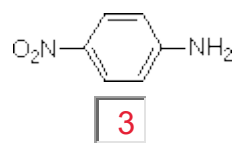
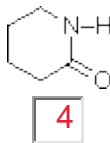
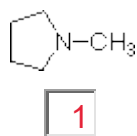


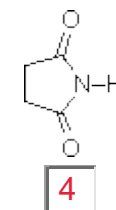
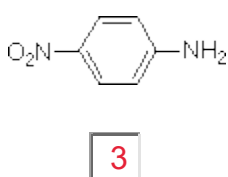
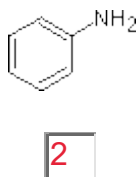
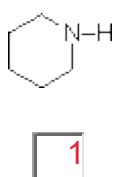
QFL0342- QUÍMICA ORGÂNICA II
FARMÁCIA (NOTURNO) – Lista suplementar Acidez-Basicidade

1) Ordene os conjuntos de compostos nitrogenados listados abaixo segundo sua basicidade (1 para a base mais forte até 4 para a base mais fraca)

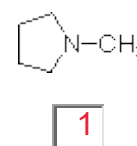
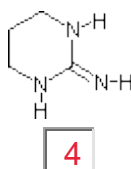
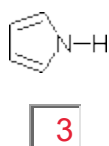
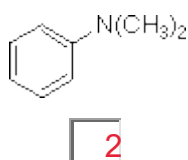
(A)



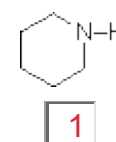
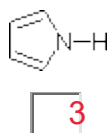
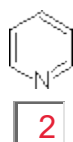
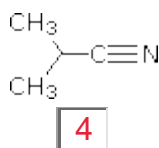
(B)



(C)



(D)

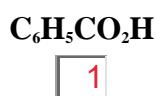
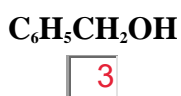


2) Ordene os conjuntos de compostos listados abaixo segundo sua acidez (1 para o ácido mais forte até 4 para o ácido mais fraco)

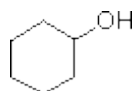
(A)



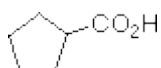
(B)



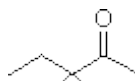
(C)



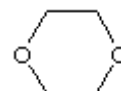
2



1

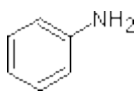


3

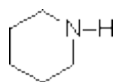


4

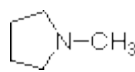
(D)



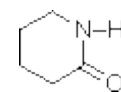
2



4



3



1

Problema	A	B	C	D	Qual o ácido mais forte?	Qual o ácido mais fraco?
1	<chem>C1CCOCC1</chem>	<chem>C1CCCC1C(=O)O</chem>	<chem>C1CCCCC1=O</chem>	<chem>C1CCCC1CO</chem>	<input type="radio"/> A <input checked="" type="radio"/> B <input type="radio"/> C <input type="radio"/> D	<input checked="" type="radio"/> A <input type="radio"/> B <input type="radio"/> C <input type="radio"/> D
2	<chem>Oc1ccccc1</chem>	<chem>COc1ccccc1</chem>	<chem>Oc1ccccc1</chem>	<chem>Oc1ccc([N+](=O)[O-])cc1</chem>	<input checked="" type="radio"/> A <input type="radio"/> B <input type="radio"/> C <input type="radio"/> D	<input type="radio"/> A <input checked="" type="radio"/> B <input type="radio"/> C <input type="radio"/> D
3	<chem>O=C1CC(=O)N1</chem>	<chem>C1CCNCC1</chem>	<chem>O=C1CCNCC1</chem>	<chem>CN1CCCC1</chem>	<input checked="" type="radio"/> A <input type="radio"/> B <input type="radio"/> C <input type="radio"/> D	<input type="radio"/> A <input checked="" type="radio"/> B <input type="radio"/> C <input type="radio"/> D
4	<chem>C1CCCC1C(=O)O</chem>	<chem>C1CCCC1C(Cl)C(=O)O</chem>	<chem>C1CCCC1C(Cl)C(=O)O</chem>	<chem>C1CCCC1C(Cl)C(=O)O</chem>	<input type="radio"/> A <input type="radio"/> B <input type="radio"/> C <input checked="" type="radio"/> D	<input checked="" type="radio"/> A <input type="radio"/> B <input type="radio"/> C <input type="radio"/> D