

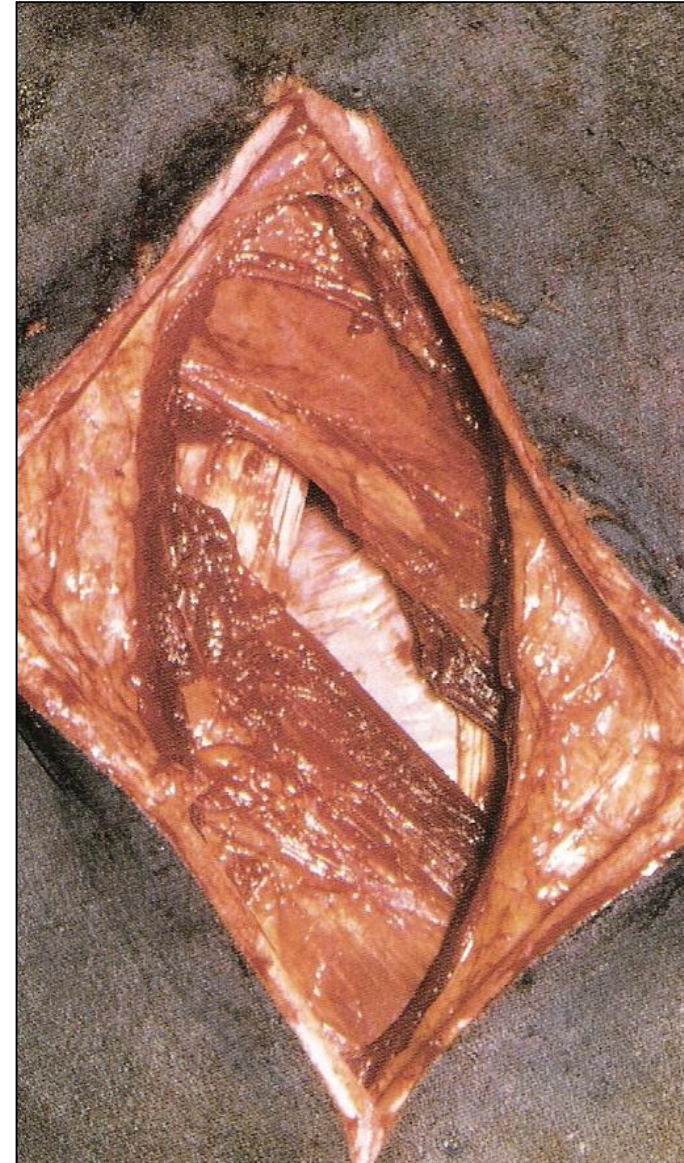
VCI 516 – Cirurgia de Grandes Animais

AFECÇÕES CIRÚRGICAS DO SISTEMA DIGESTÓRIO DOS RUMINANTES

Prof. Dr. Rodrigo Romero Corrêa
romero@usp.br

LAPAROTOMIA EXPLORATÓRIA

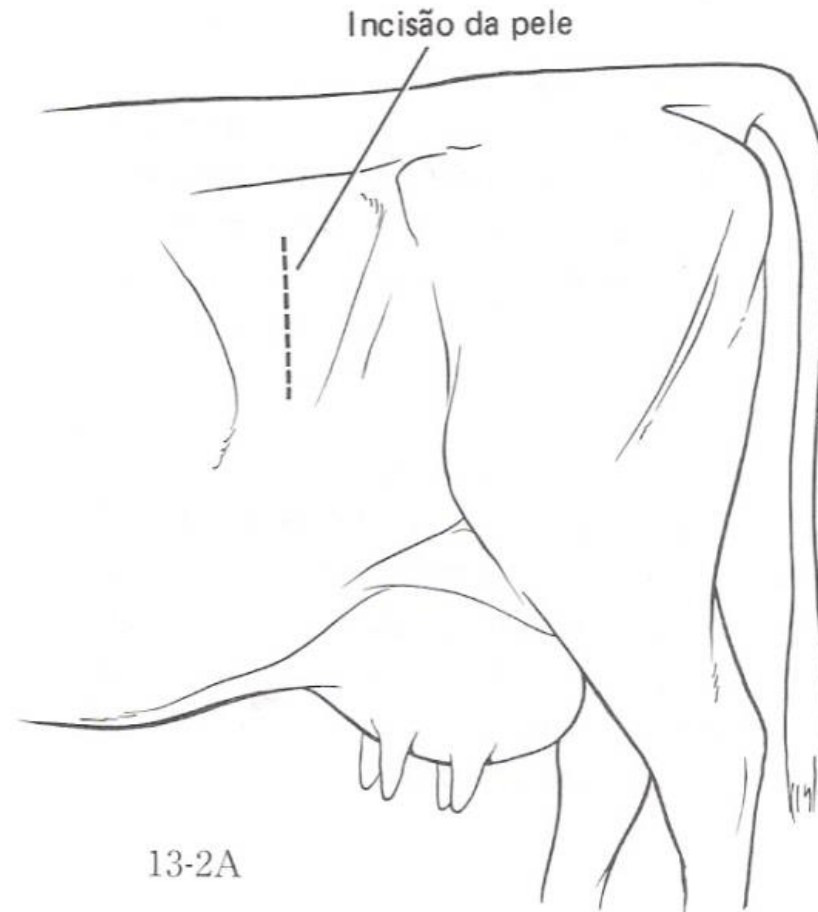
- Indicações
- Acessos cirúrgicos
- Pré-operatório
- Técnicas cirúrgicas
- Pós-operatório



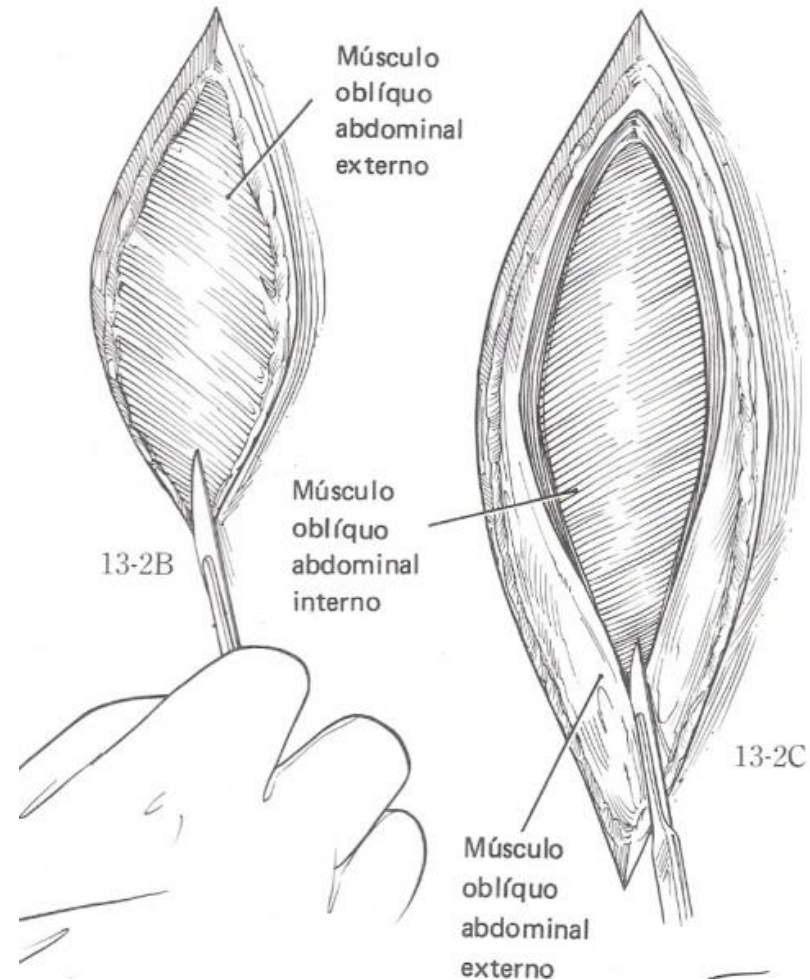
LAPAROTOMIA PELO FLANCO ESQUERDO RUMENOTOMIA



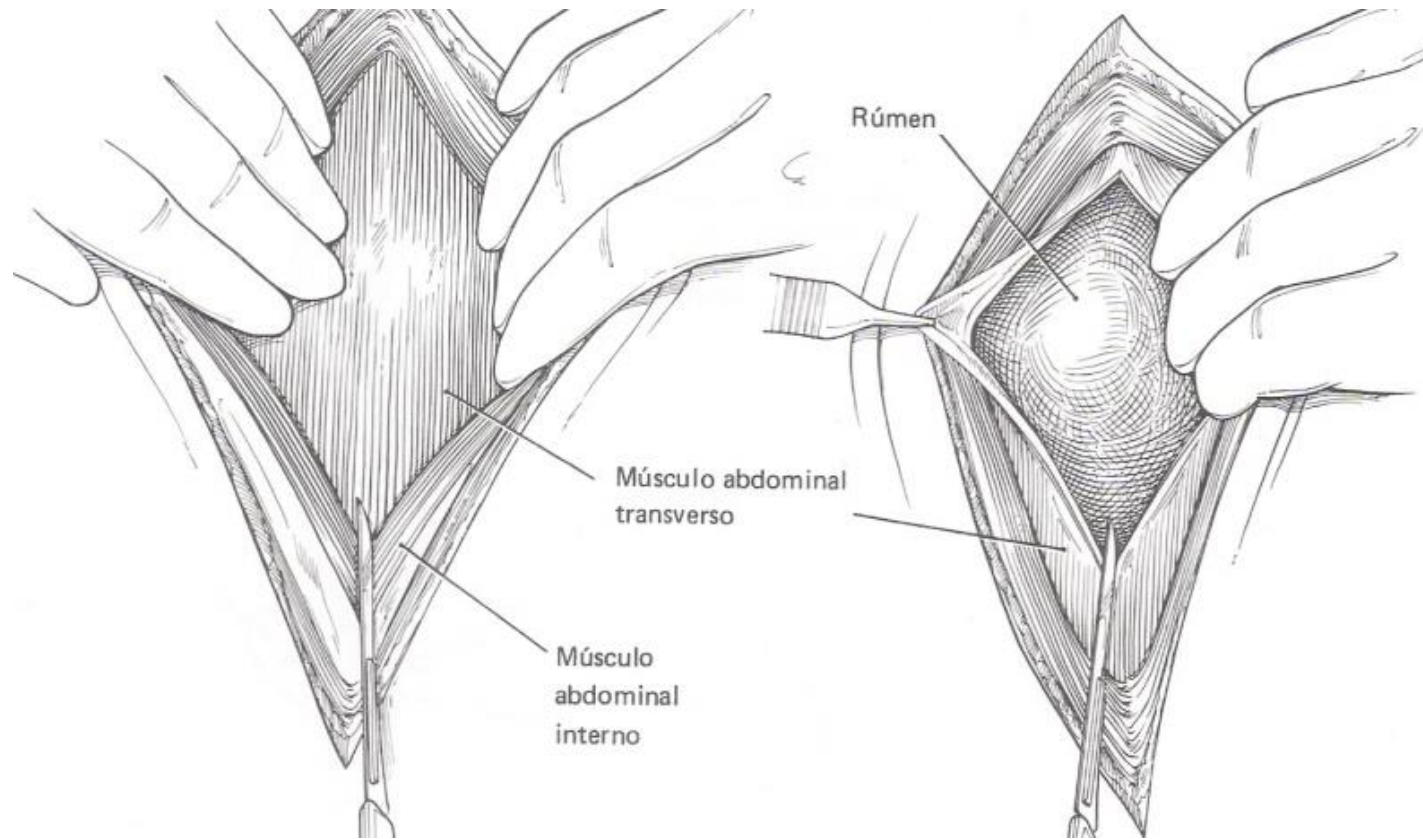
LAPAROTOMIA PELO FLANCO ESQUERDO RUMENOTOMIA



LAPAROTOMIA PELO FLANCO ESQUERDO RUMENOTOMIA



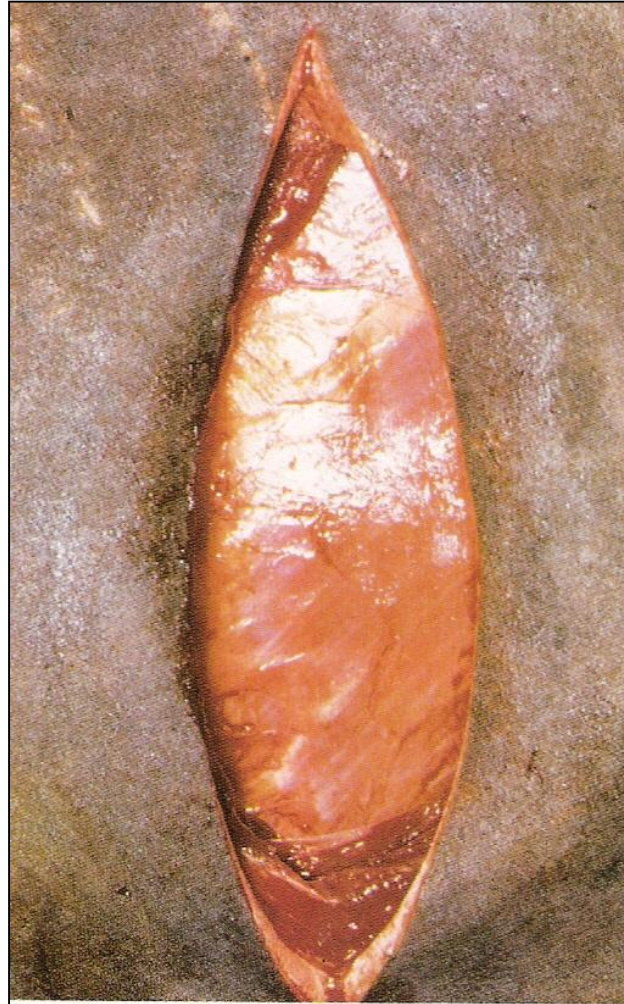
LAPAROTOMIA PELO FLANCO ESQUERDO RUMENOTOMIA



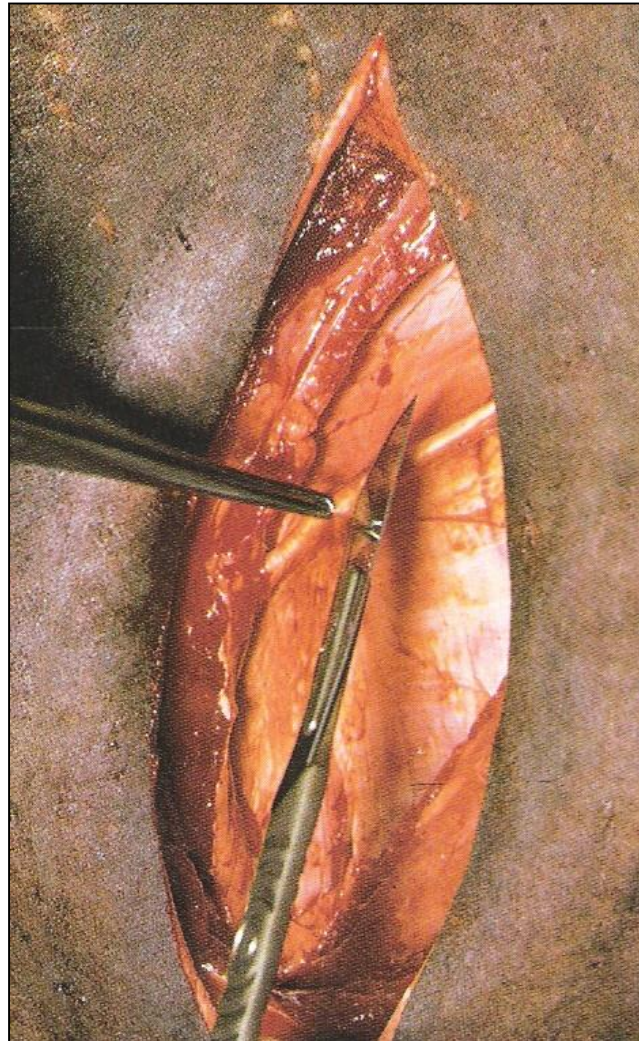
LAPAROTOMIA PELO FLANCO ESQUERDO RUMENOTOMIA



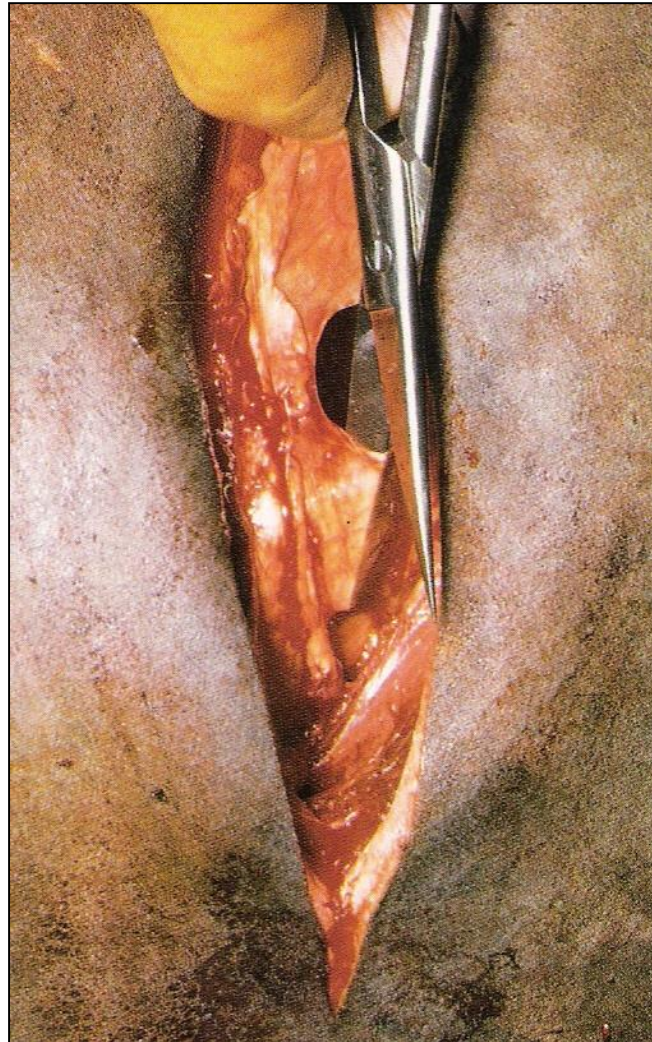
LAPAROTOMIA PELO FLANCO ESQUERDO RUMENOTOMIA



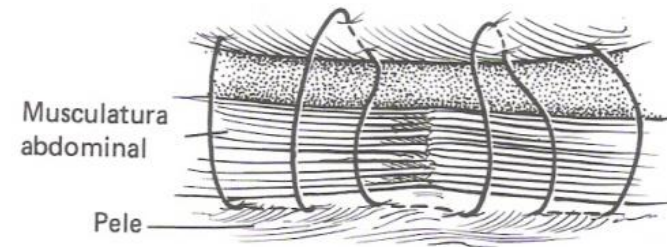
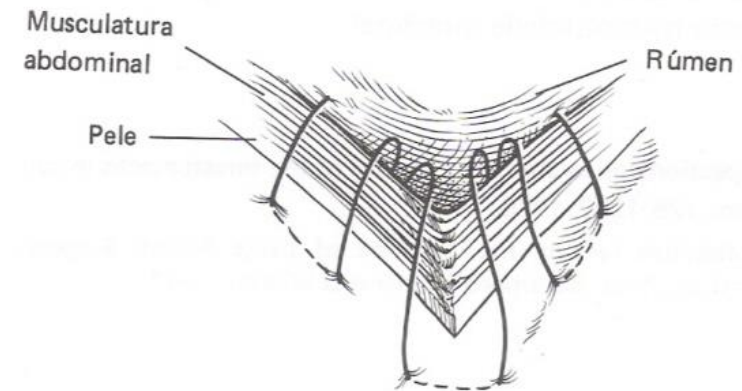
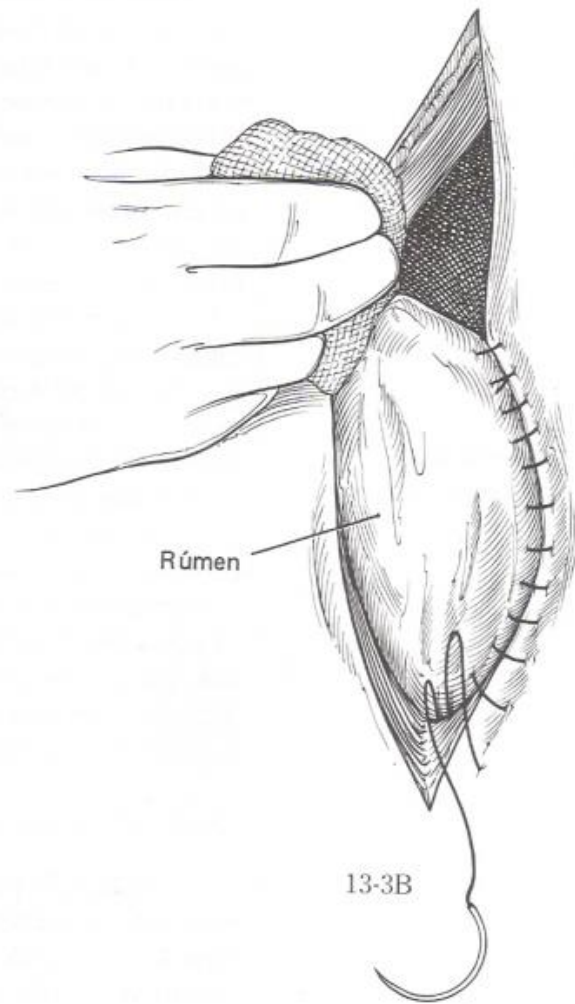
LAPAROTOMIA PELO FLANCO ESQUERDO RUMENOTOMIA



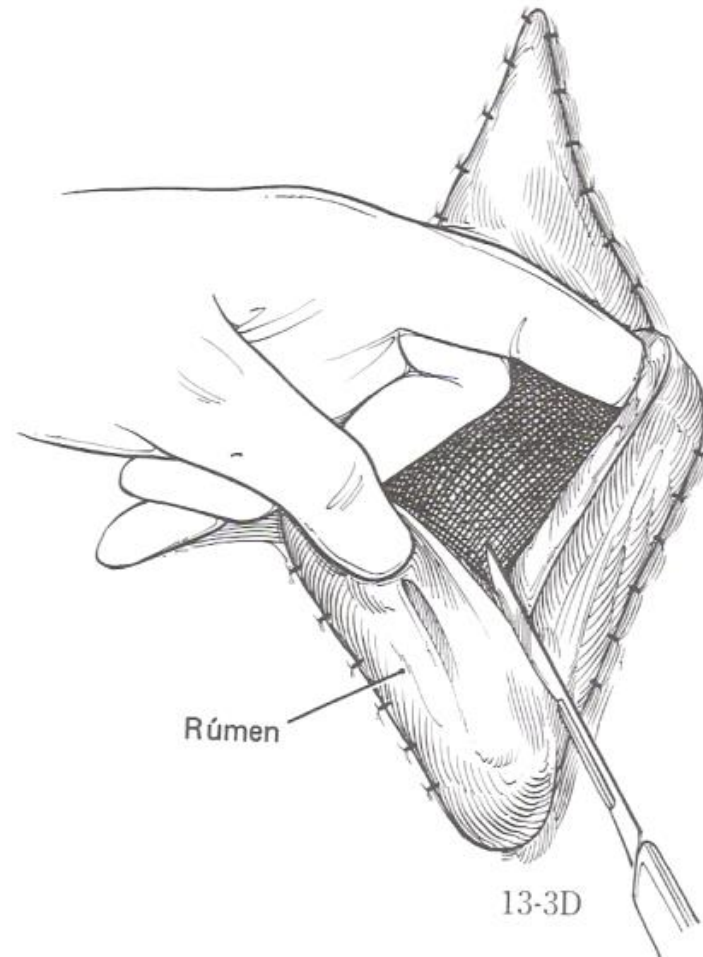
LAPAROTOMIA PELO FLANCO ESQUERDO RUMENOTOMIA



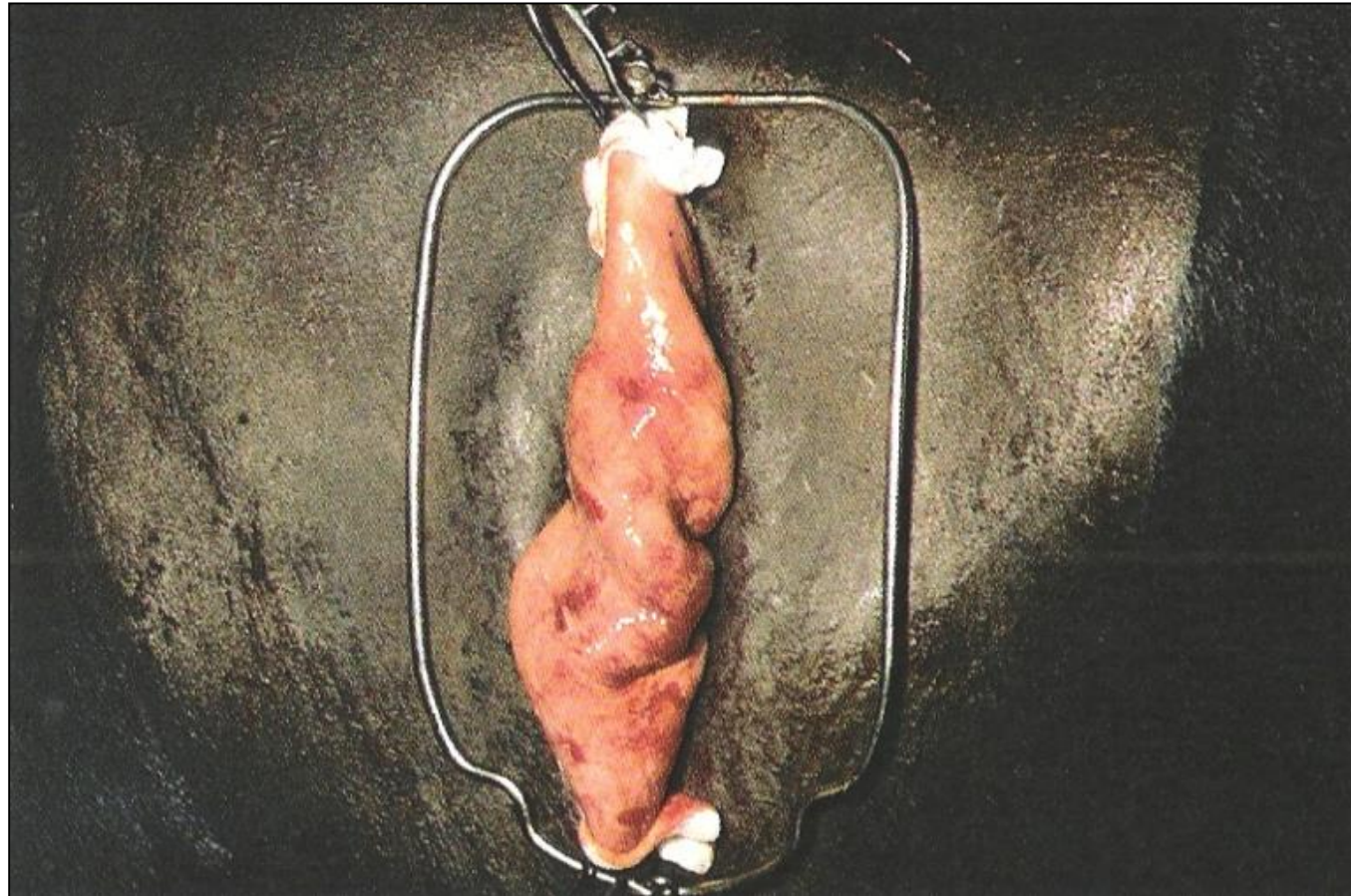
LAPAROTOMIA PELO FLANCO ESQUERDO RUMENOTOMIA



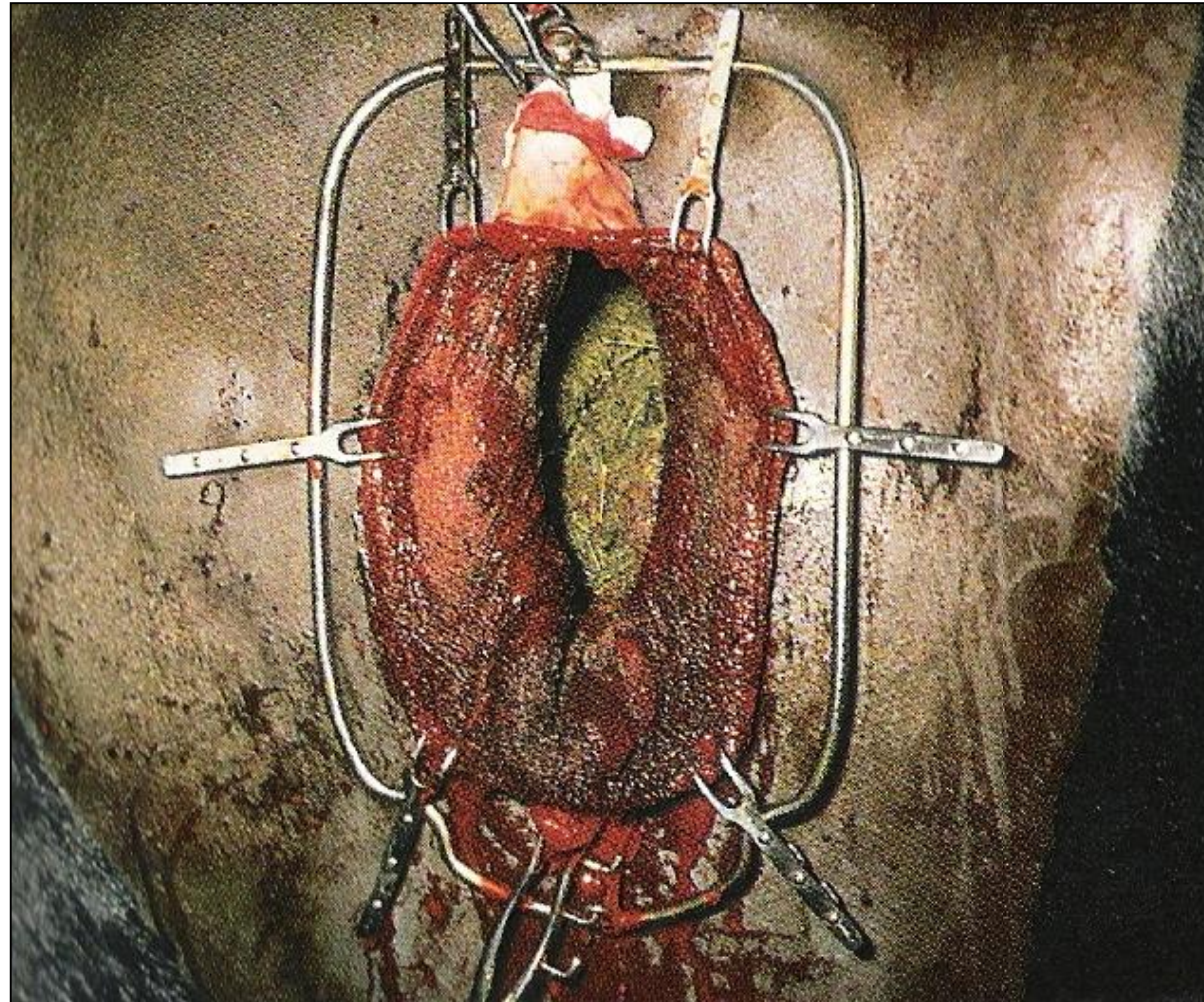
LAPAROTOMIA PELO FLANCO ESQUERDO RUMENOTOMIA



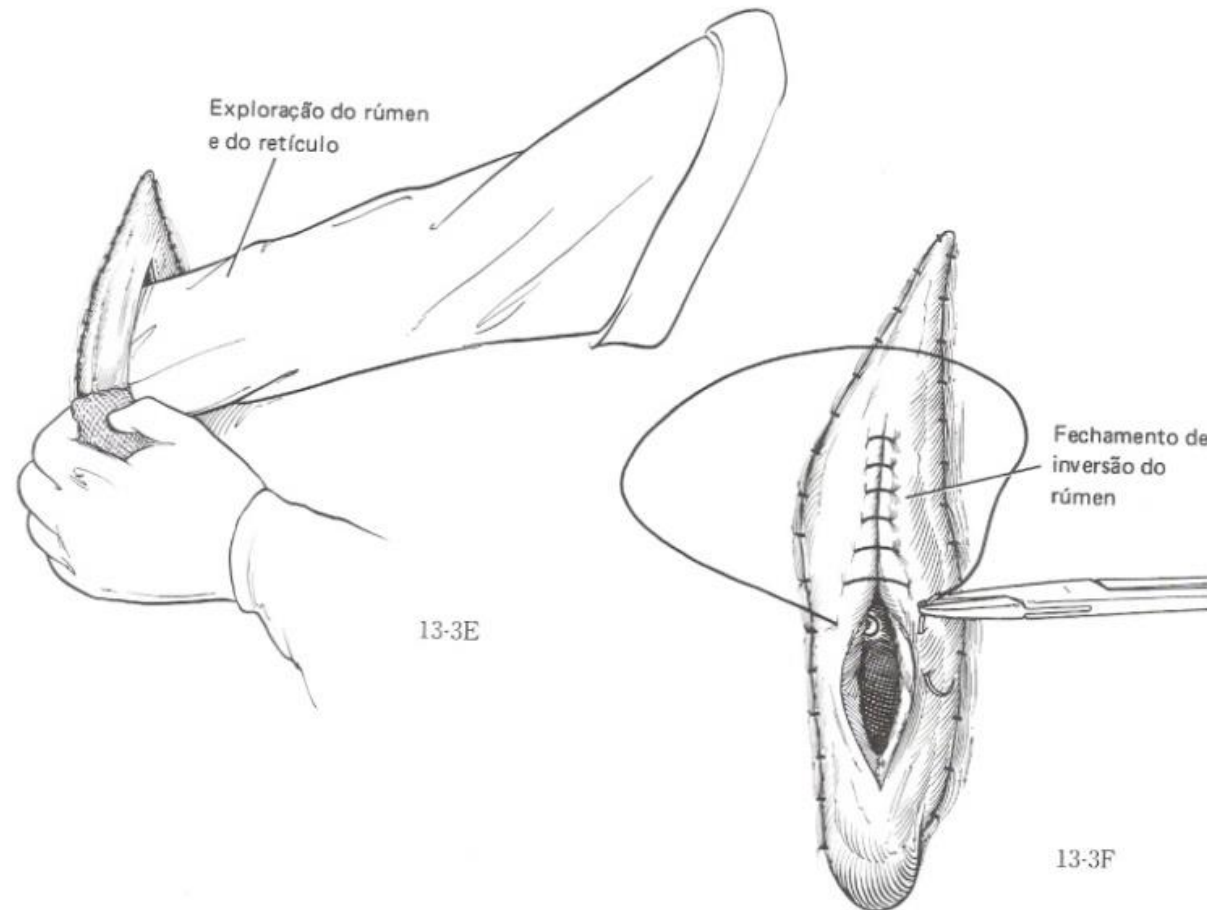
LAPAROTOMIA PELO FLANCO ESQUERDO RUMENOTOMIA



LAPAROTOMIA PELO FLANCO ESQUERDO RUMENOTOMIA



LAPAROTOMIA PELO FLANCO ESQUERDO RUMENOTOMIA



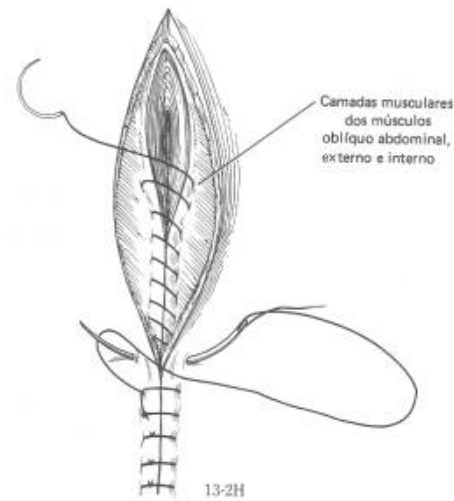
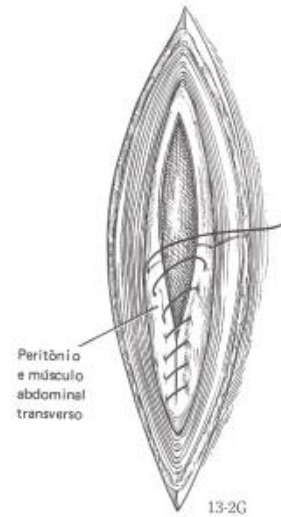
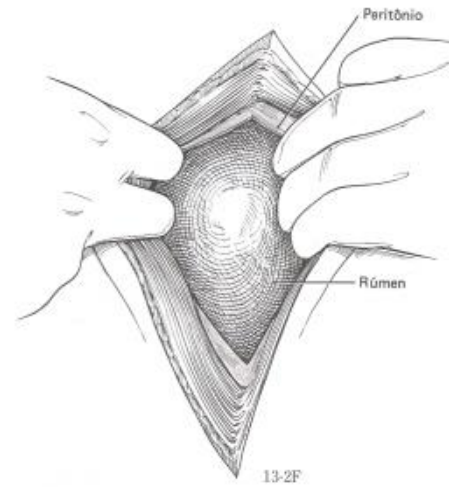
LAPAROTOMIA PELO FLANCO ESQUERDO RUMENOTOMIA



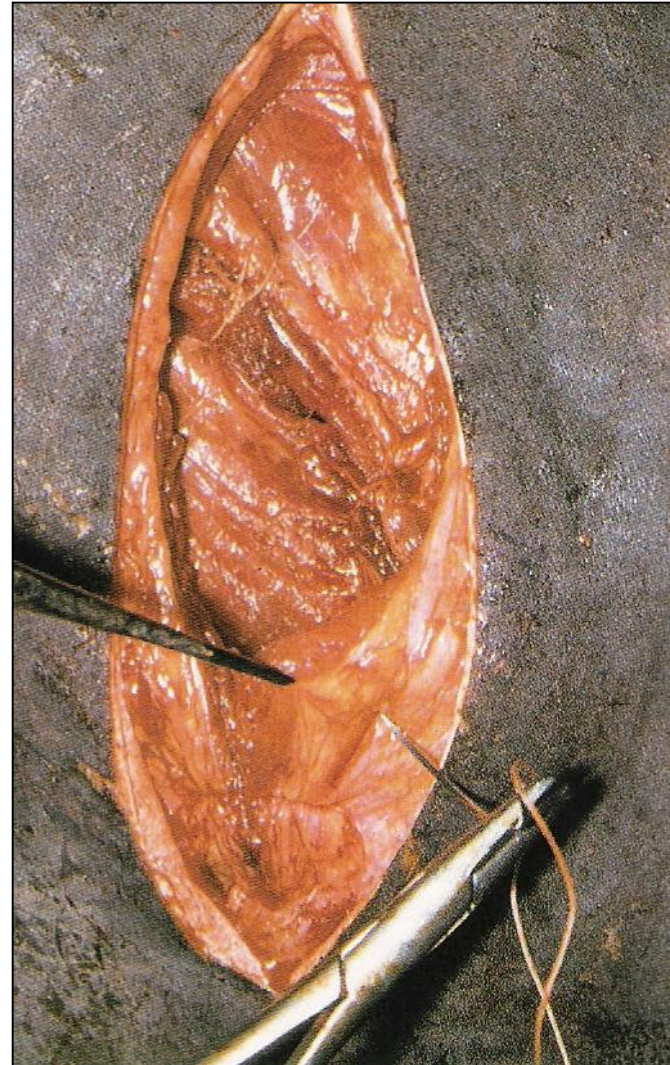
LAPAROTOMIA PELO FLANCO ESQUERDO RUMENOTOMIA



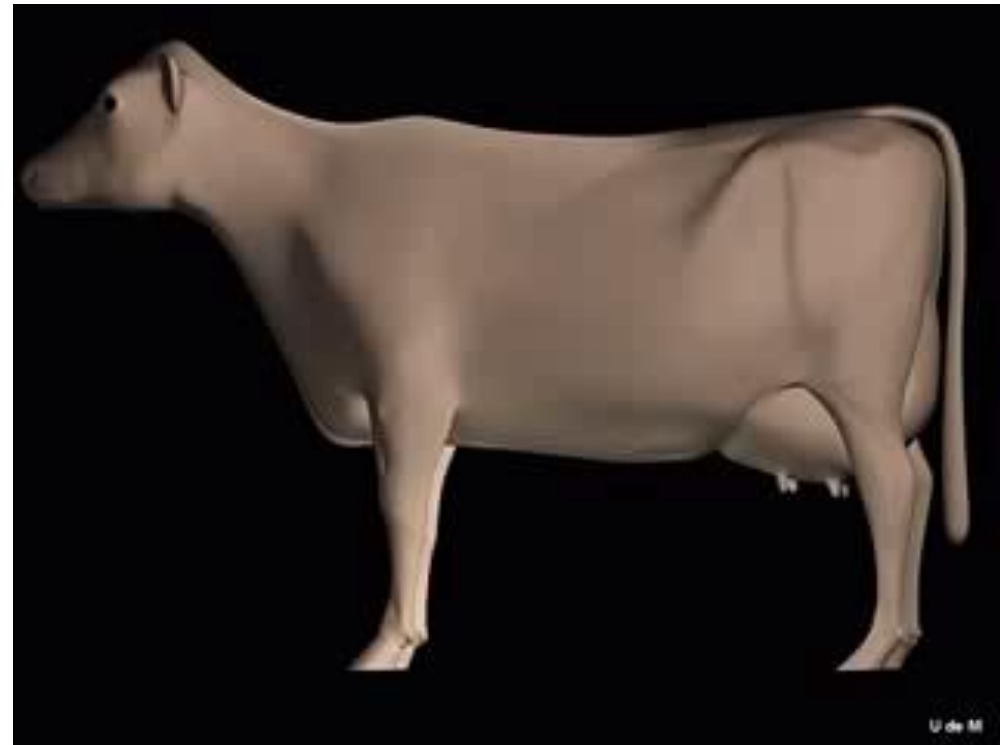
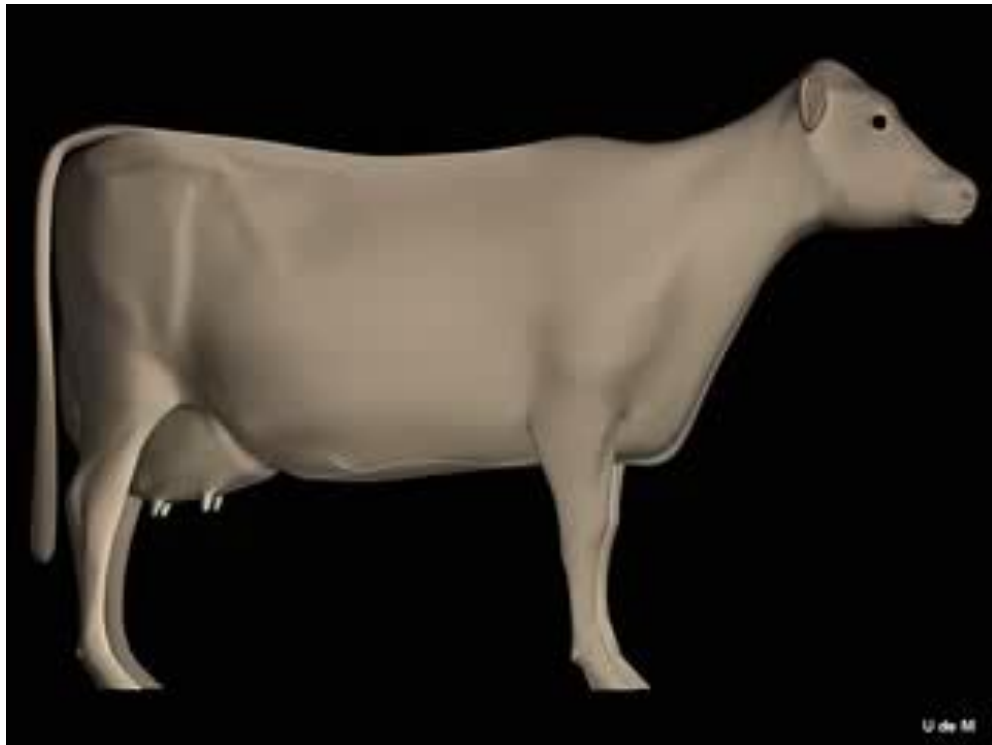
LAPAROTOMIA PELO FLANCO ESQUERDO RUMENOTOMIA



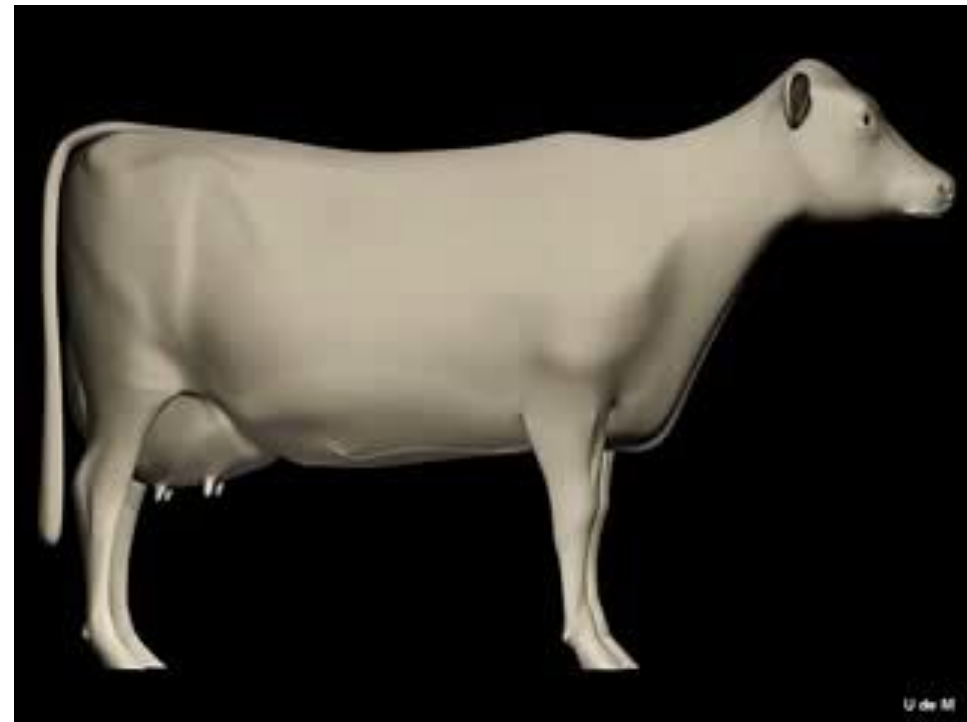
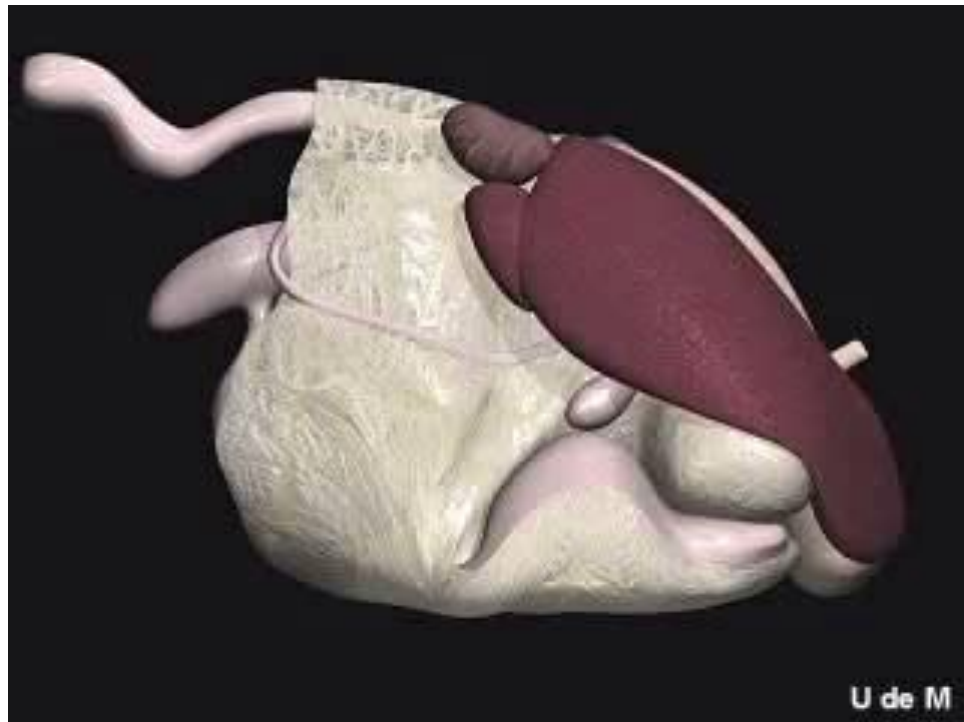
LAPAROTOMIA PELO FLANCO ESQUERDO RUMENOTOMIA



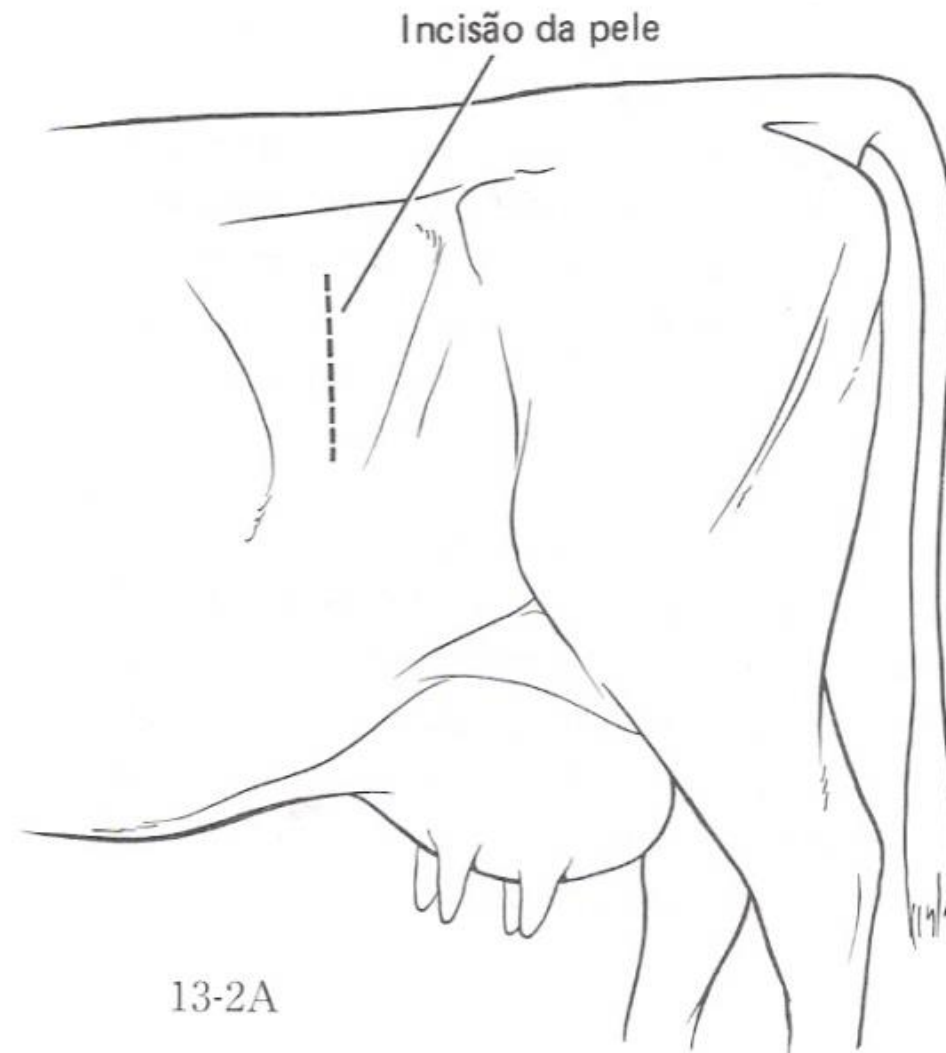
Deslocamento de abomaso à esquerda



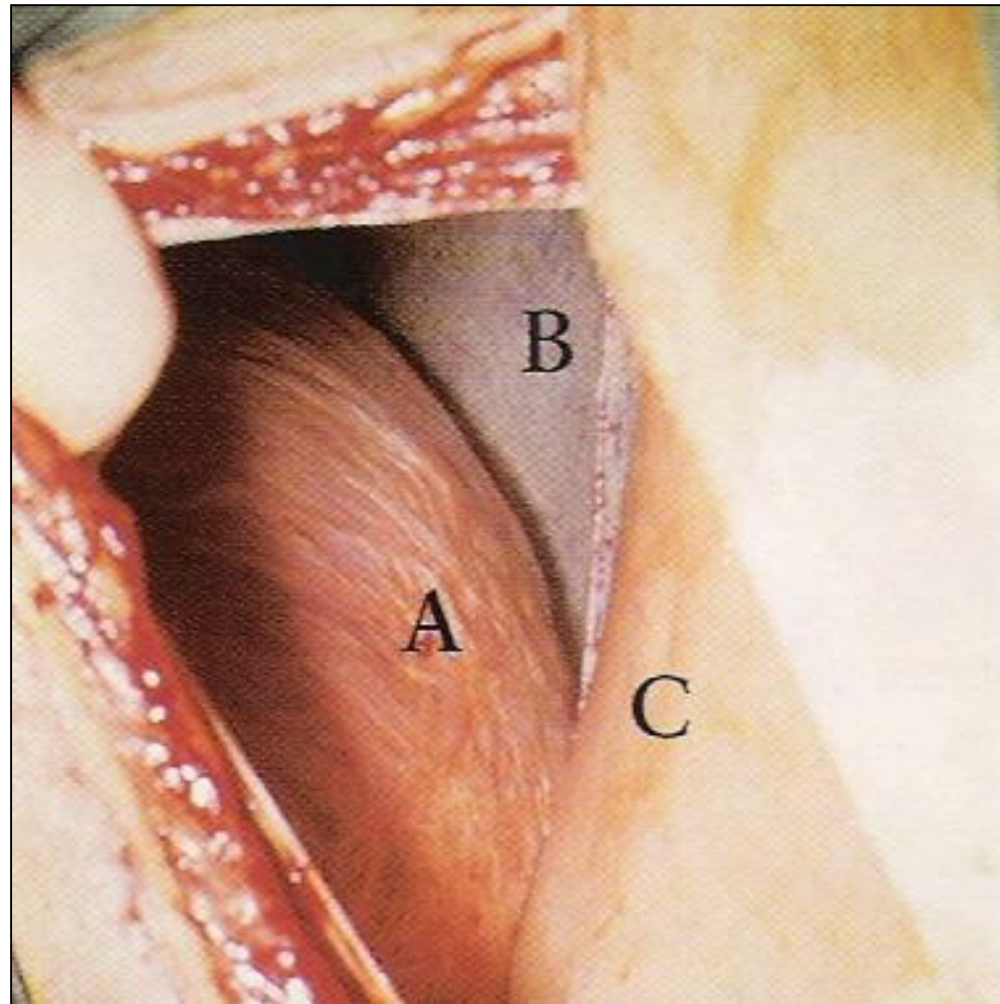
Deslocamento de abomaso à direita



ABOMASOPEXIA PELO FLANCO ESQUERDO



ABOMASOPEXIA PELO FLANCO ESQUERDO



ABOMASOPEXIA PELO FLANCO ESQUERDO

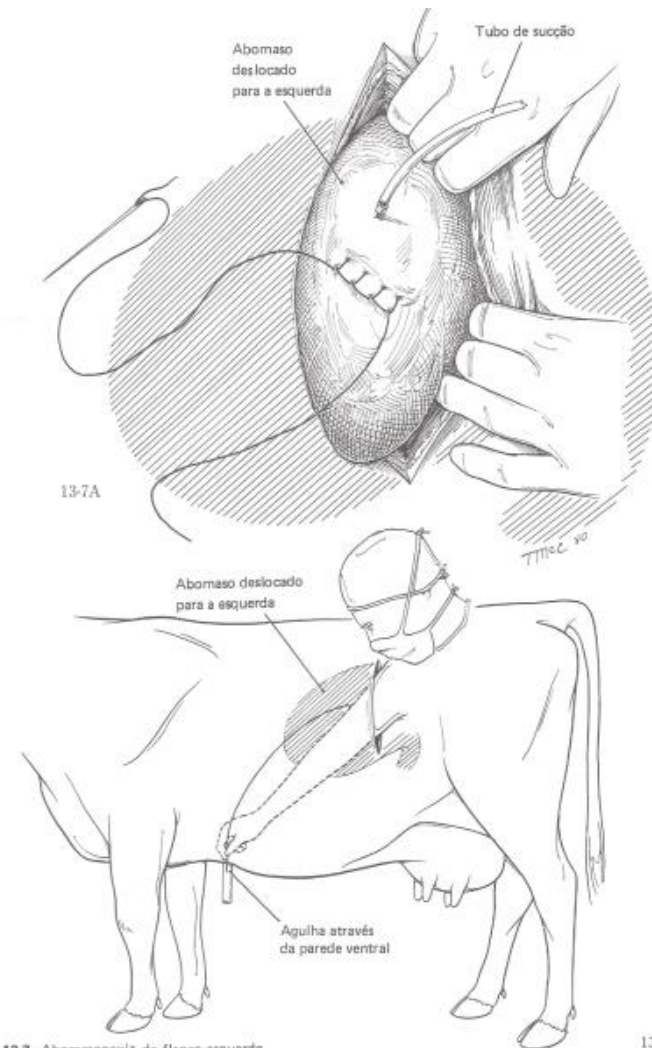
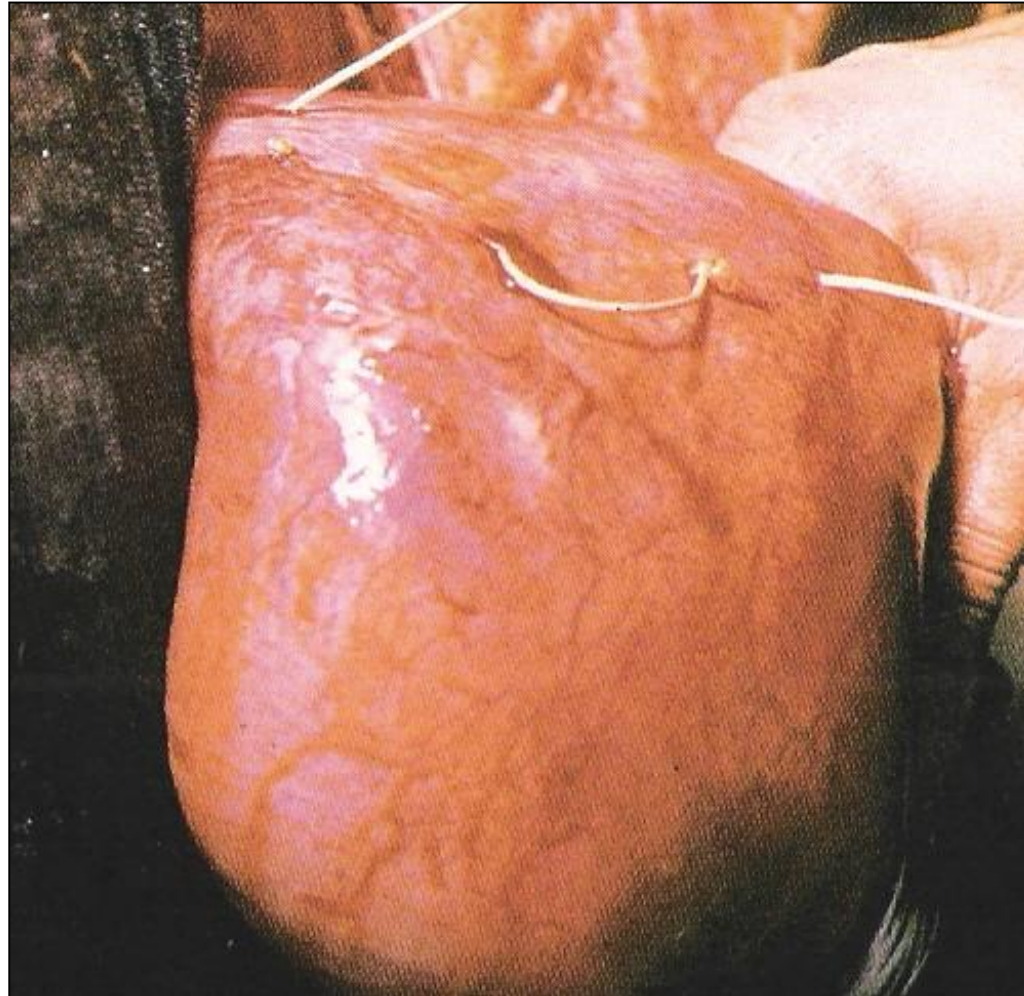
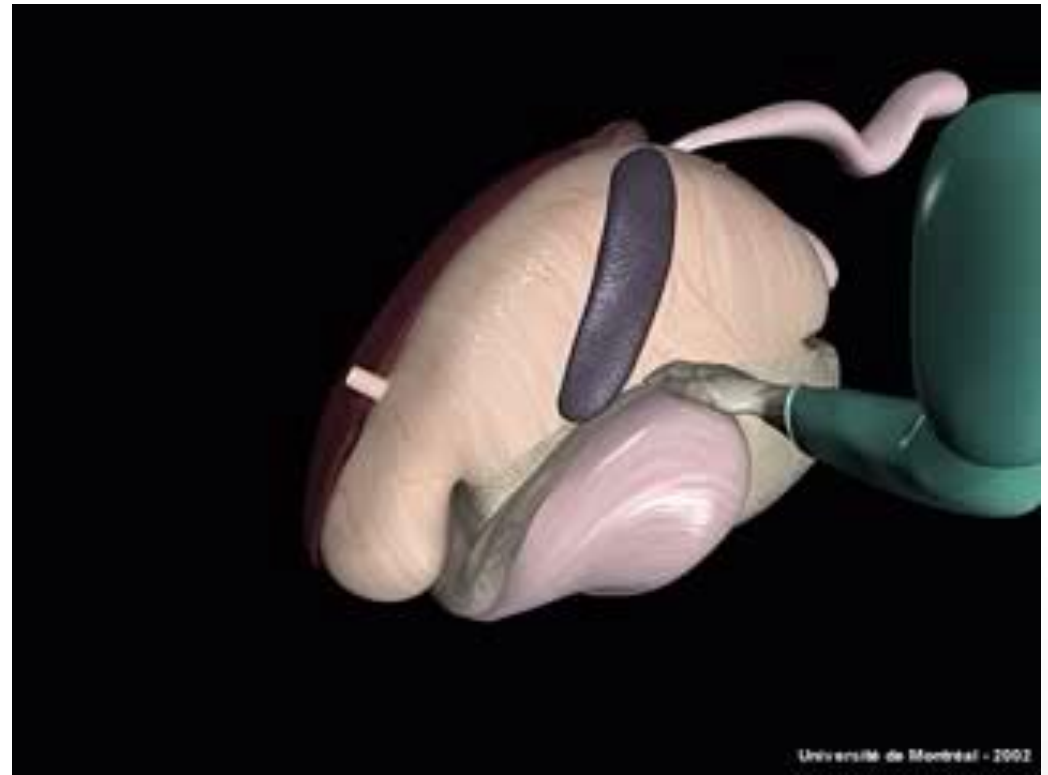
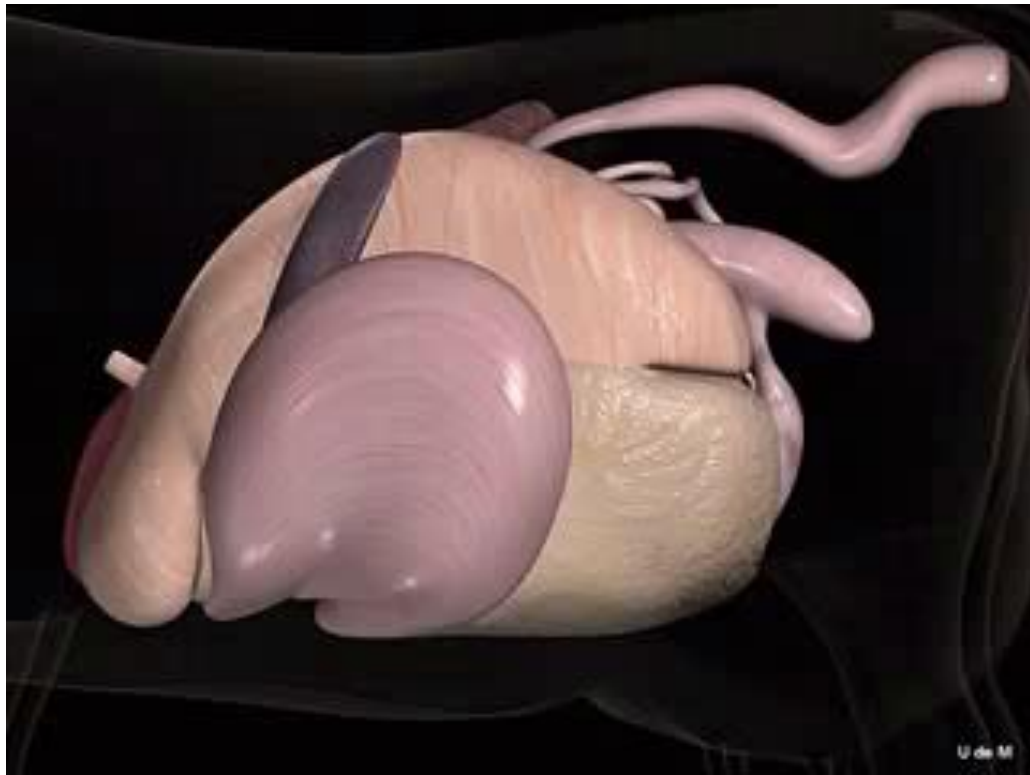


Fig. 13-7. Abomasopexia do flanco esquerdo.

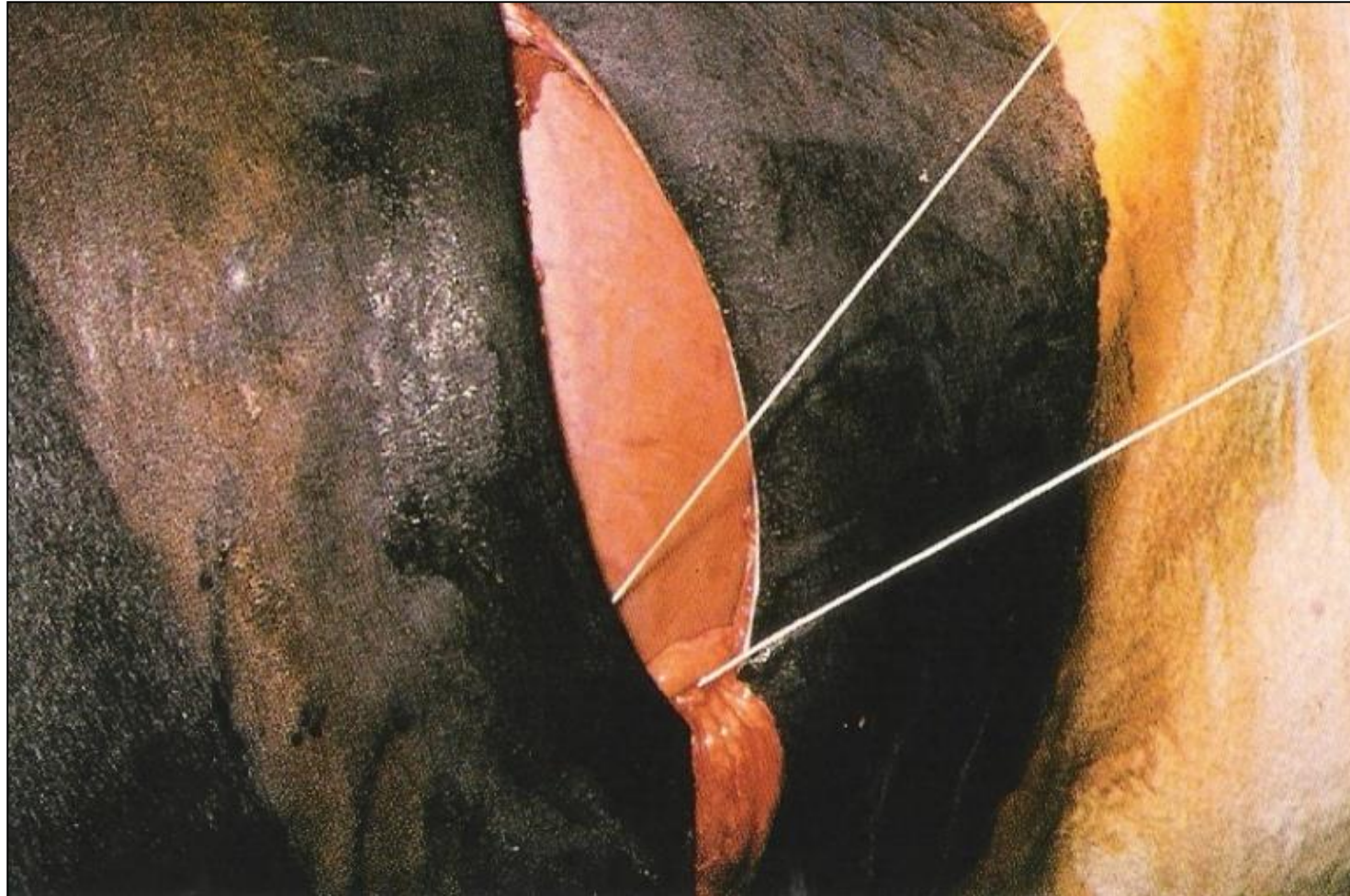
ABOMASOPEXIA PELO FLANCO ESQUERDO



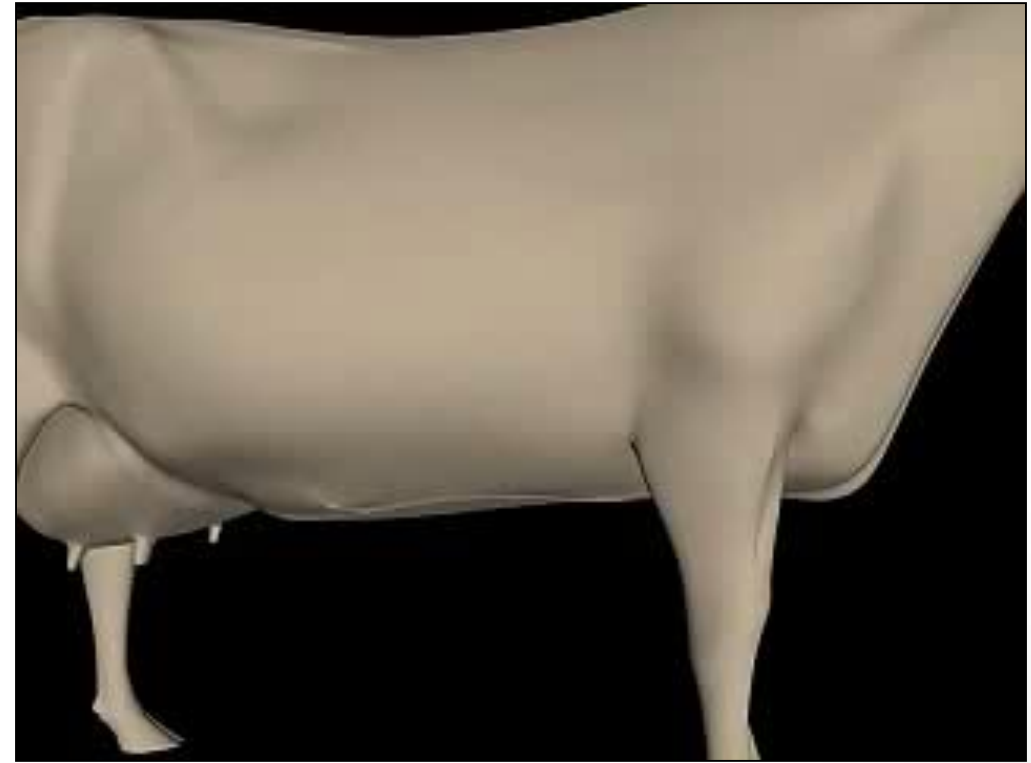
Redução pelo flanco esquerdo: DAE



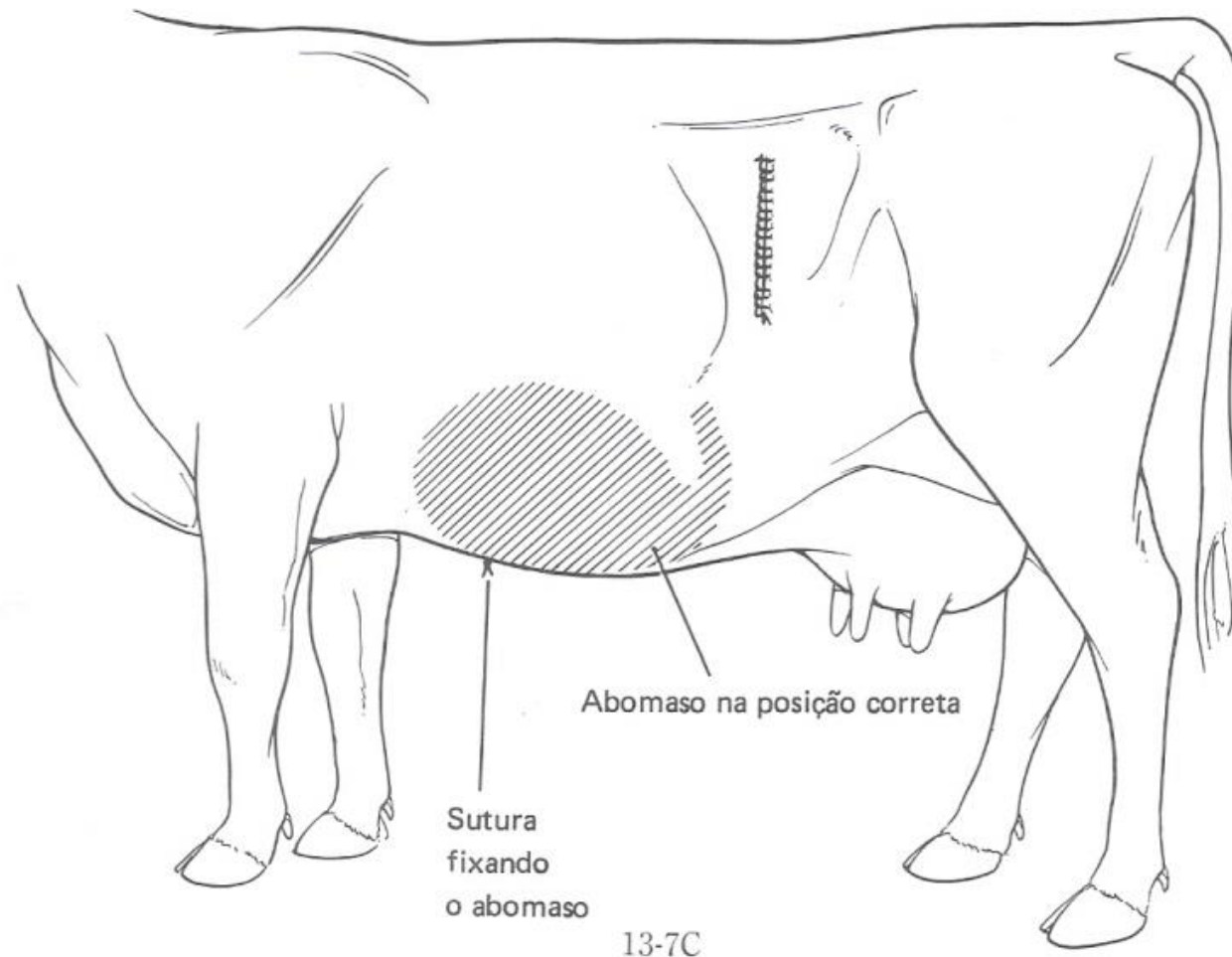
ABOMASOPEXIA PELO FLANCO ESQUERDO



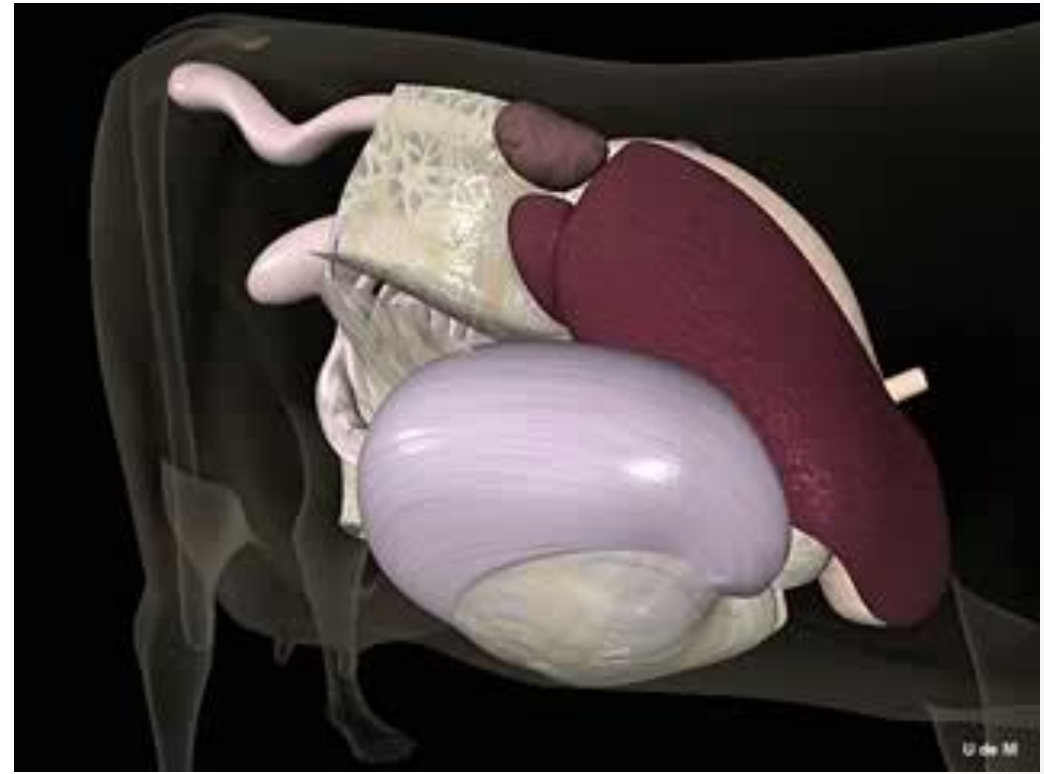
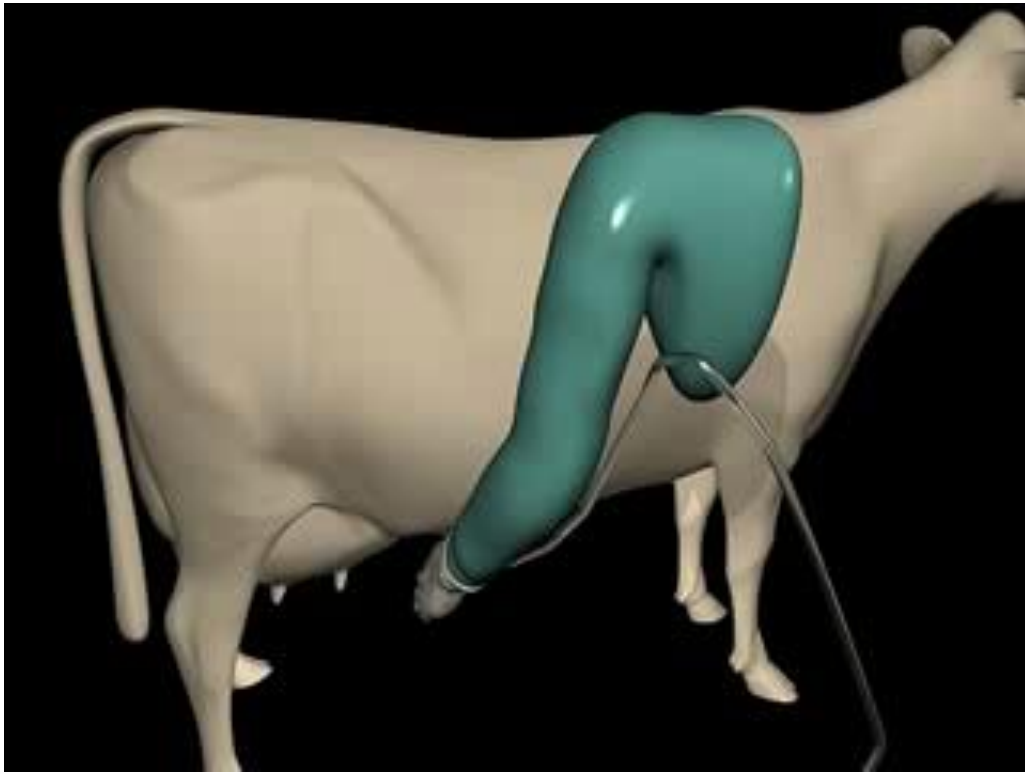
ABOMASOPEXIA PELO FLANCO ESQUERDO



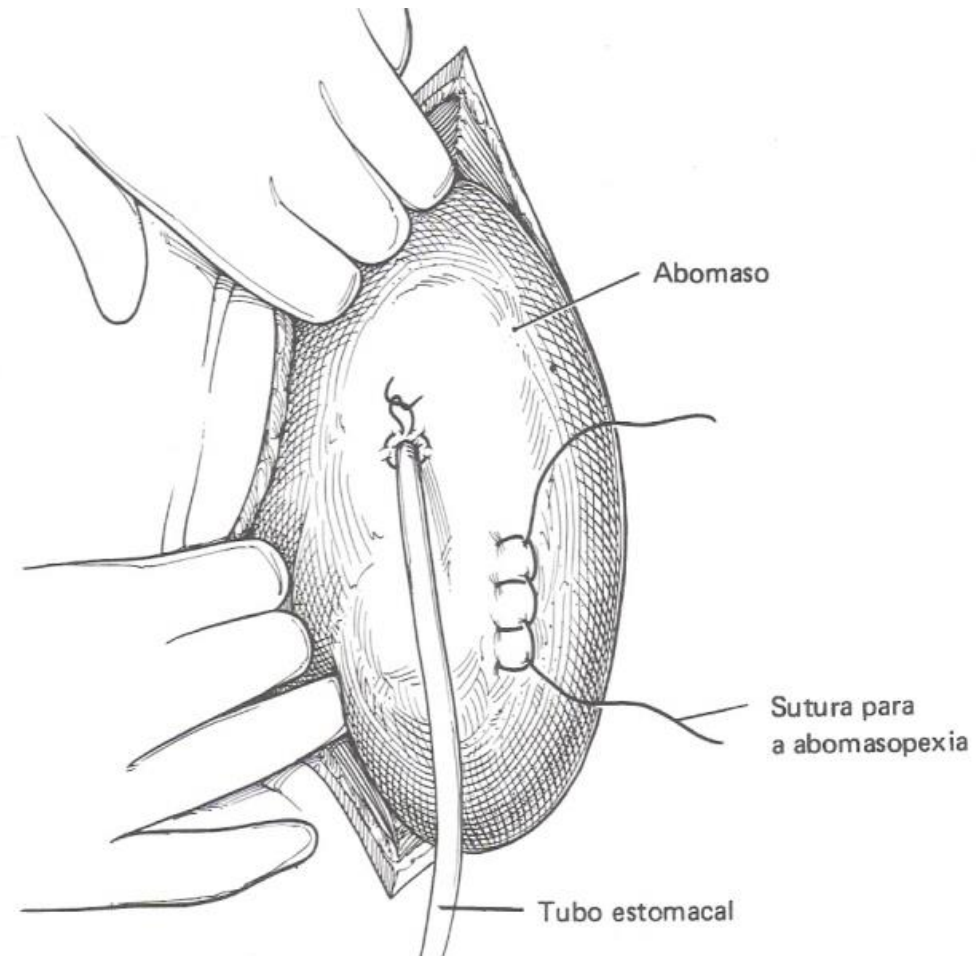
ABOMASOPEXIA PELO FLANCO ESQUERDO



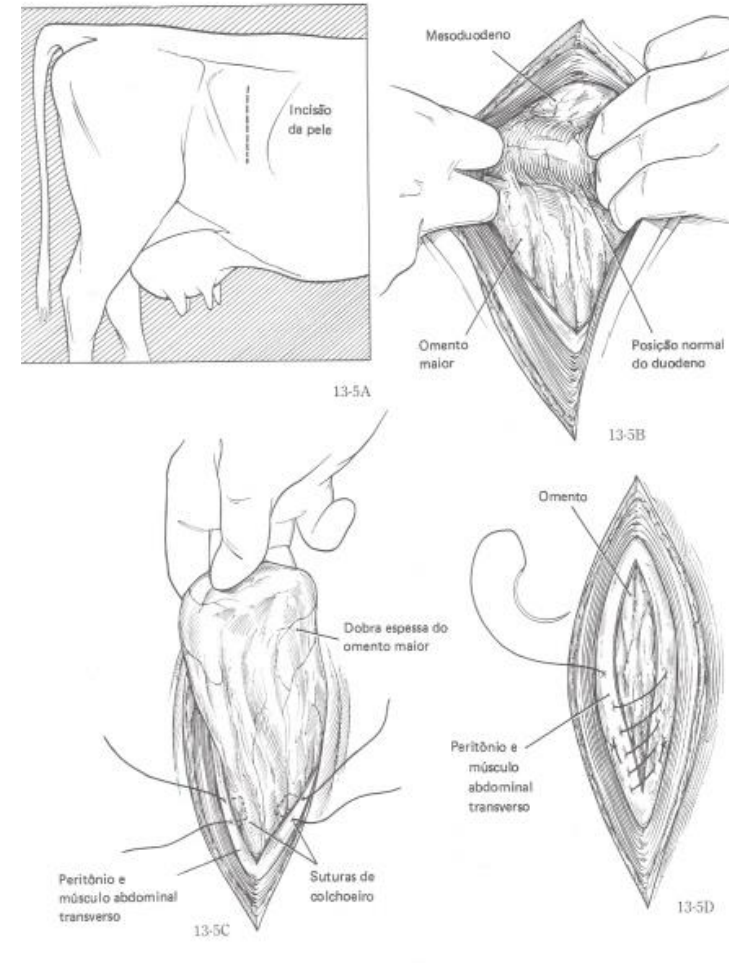
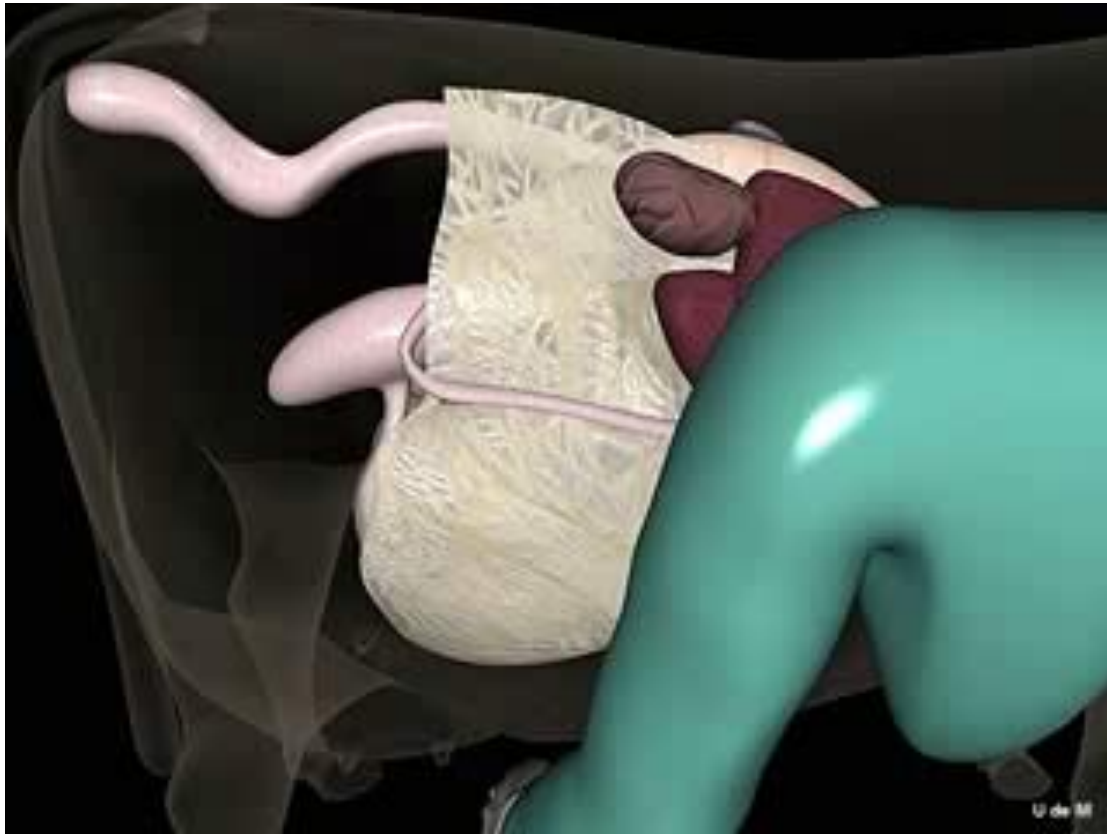
Acesso pelo flanco direito



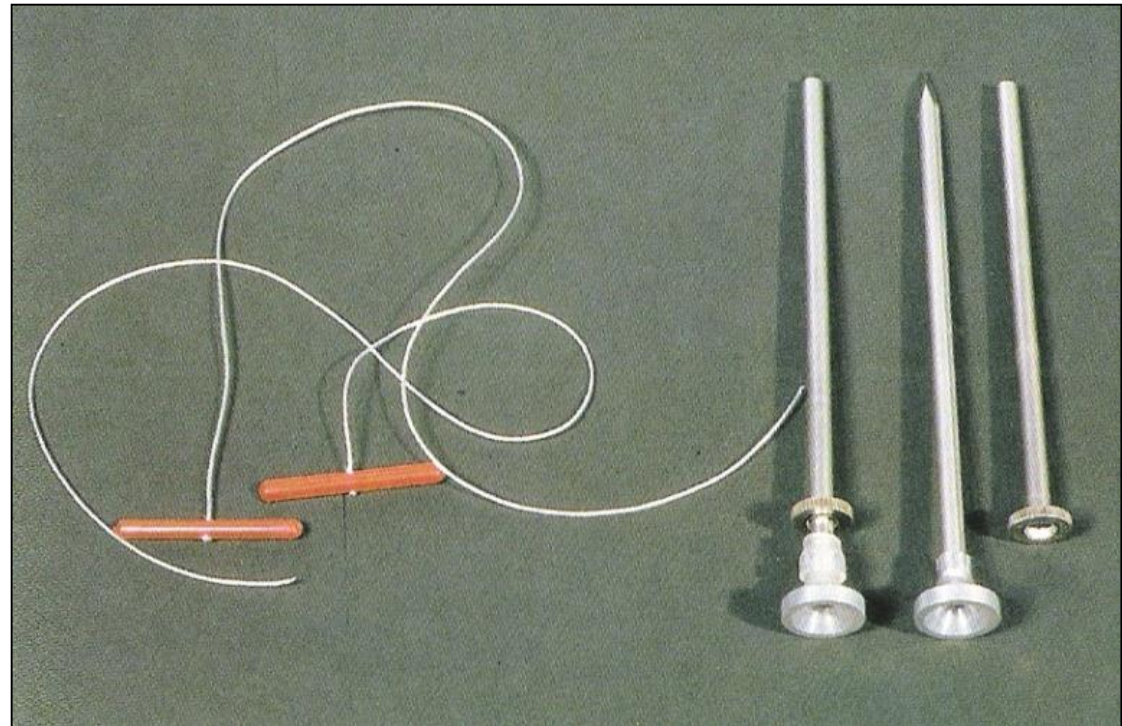
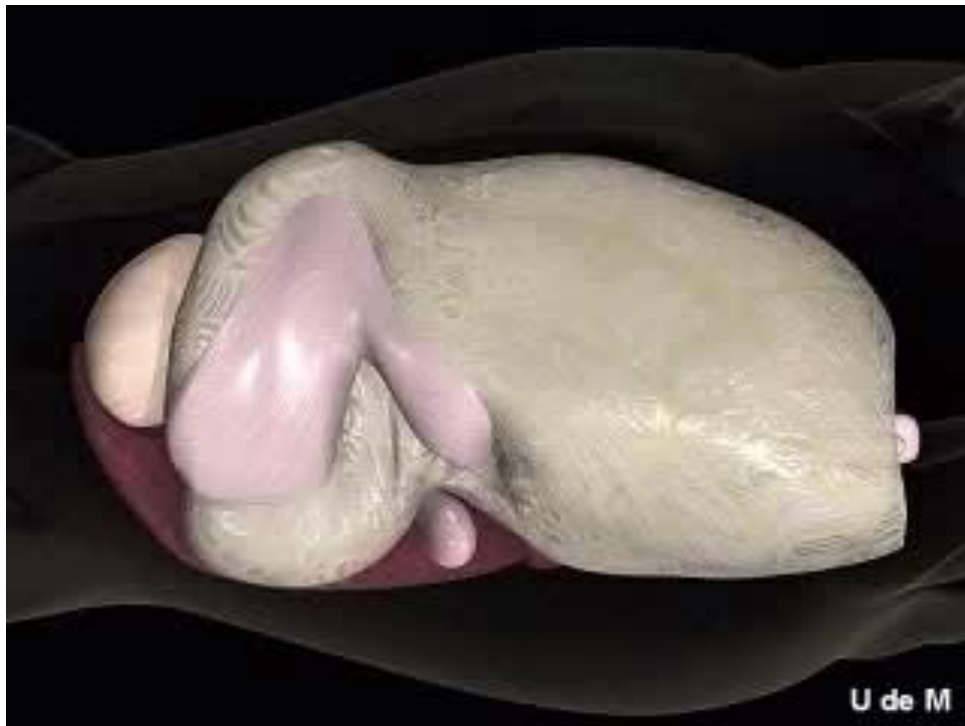
ABOMASOPEXIA / OMENTOPEXIA PELO FLANCO DIREITO



ABOMASOPEXIA / OMENTOPEXIA PELO FLANCO DIREITO



Rolamento e abomasopexia



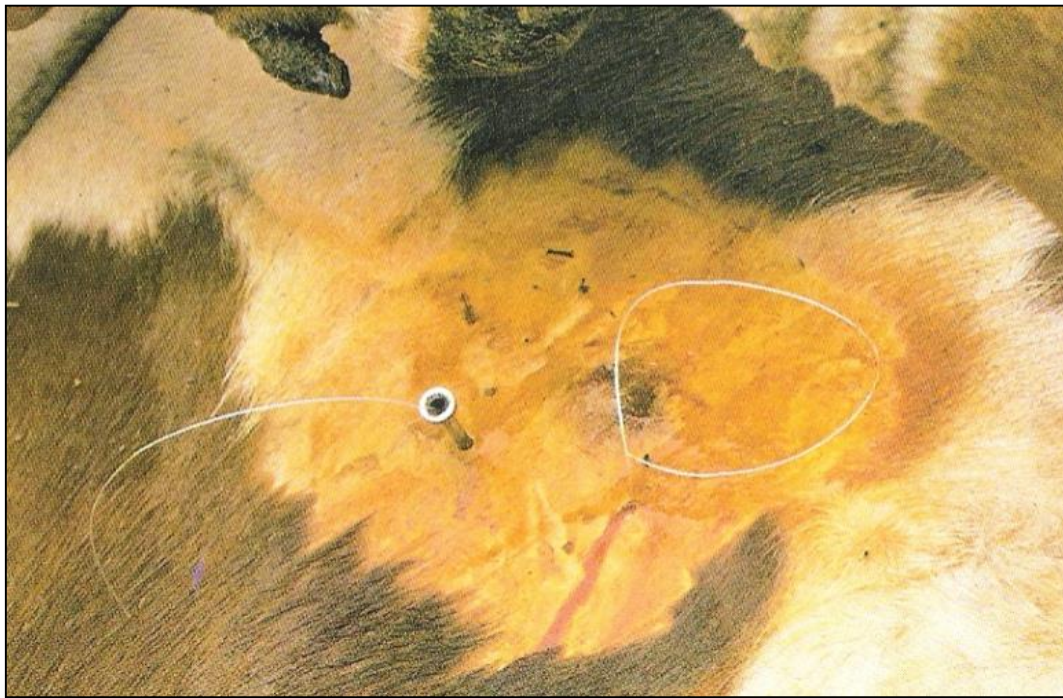
ABOMASOPEXIA

Técnica fechada



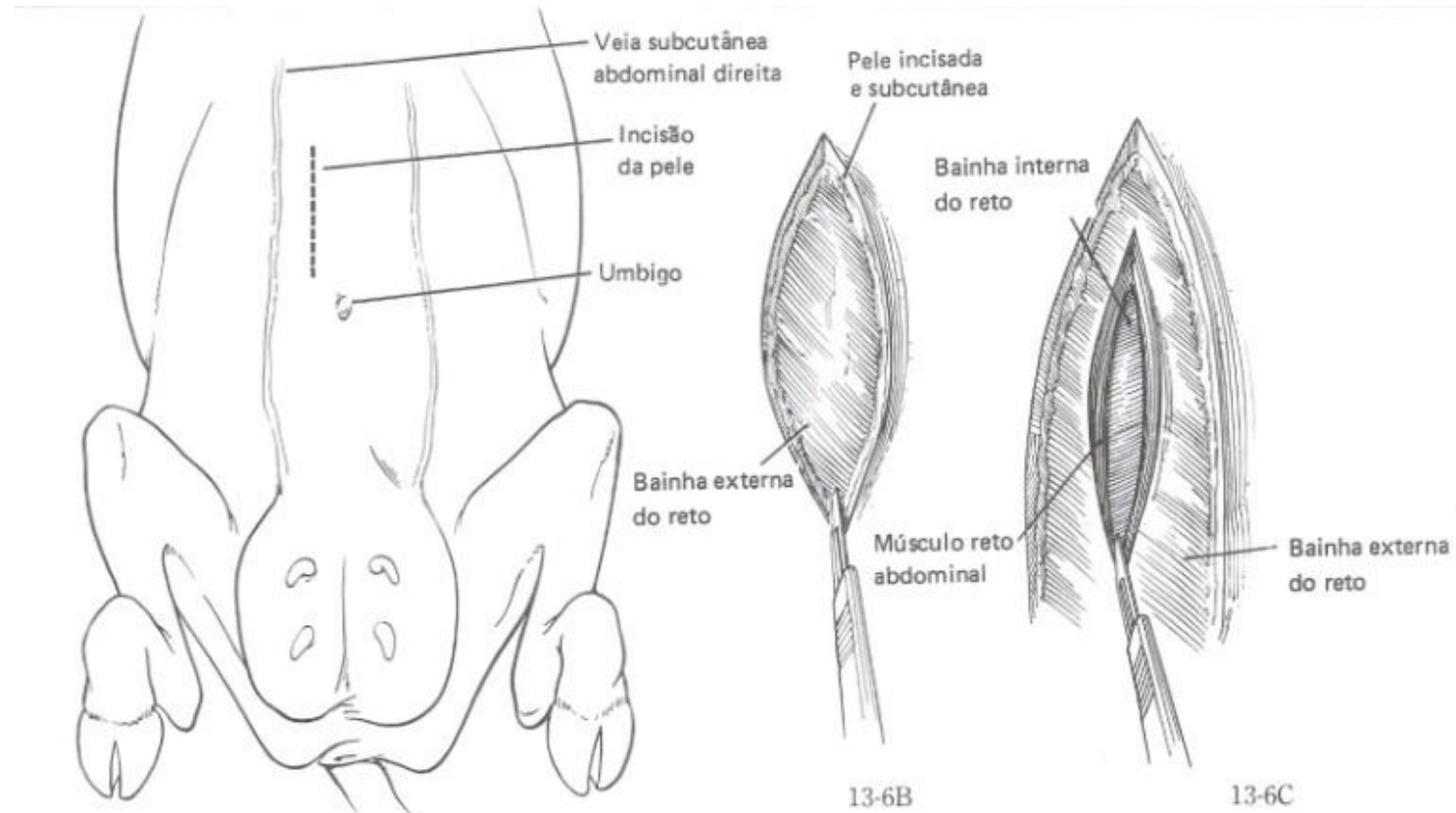
ABOMASOPEXIA

Técnica fechada



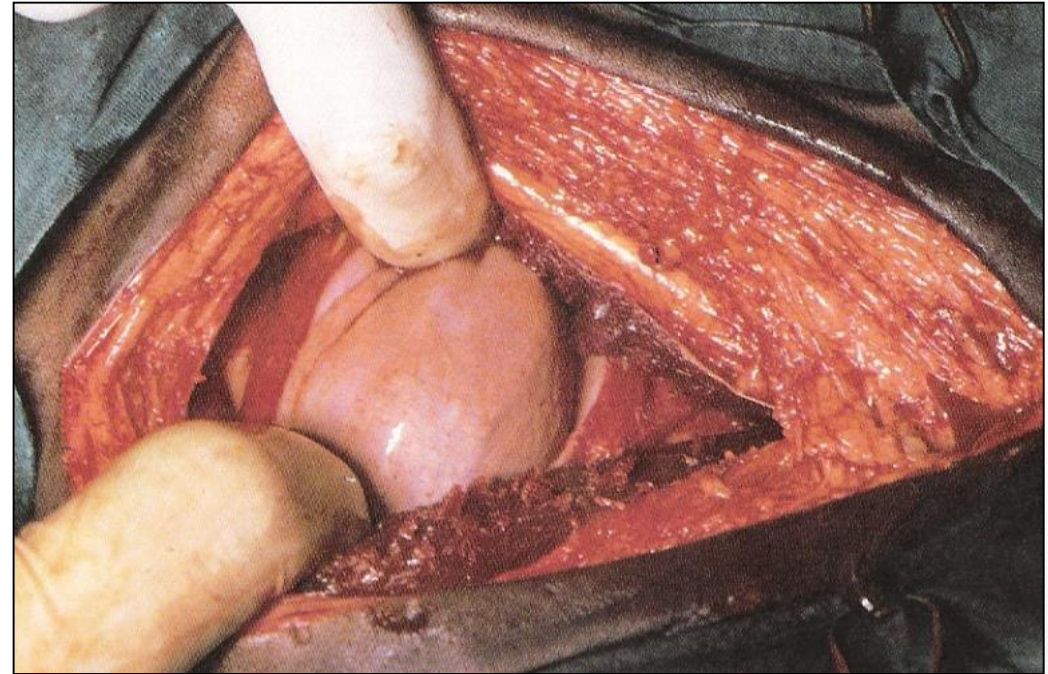
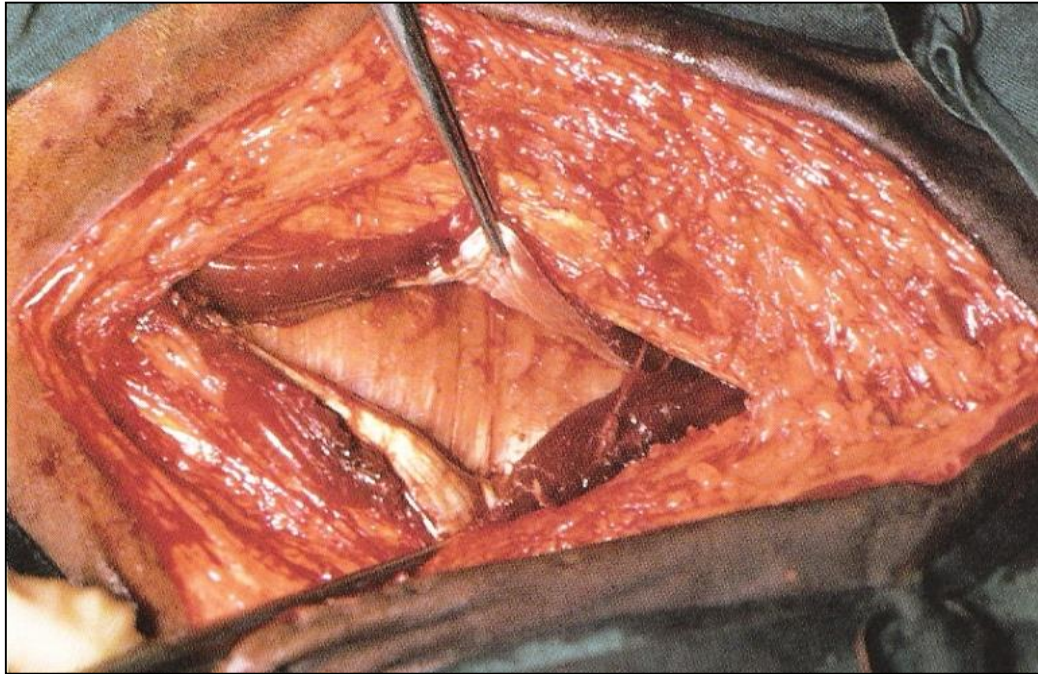
ABOMASOPEXIA

Laparotomia paramediana



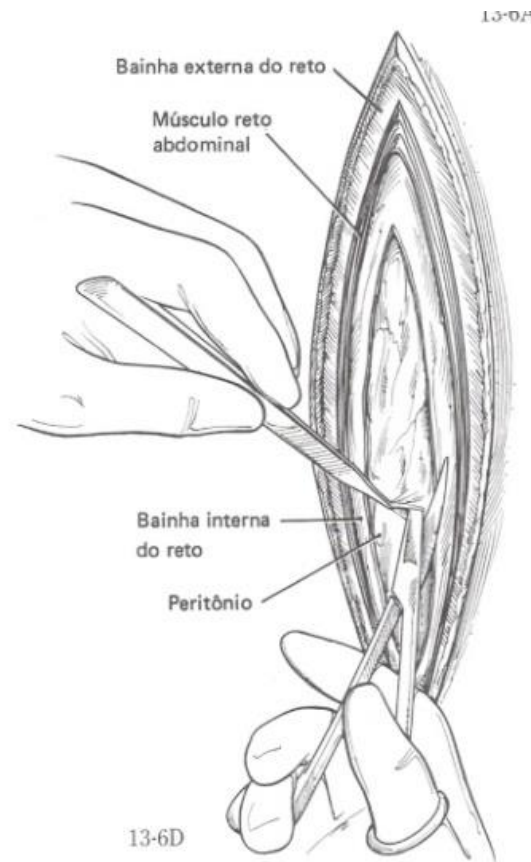
ABOMASOPEXIA

Laparotomia paramediana

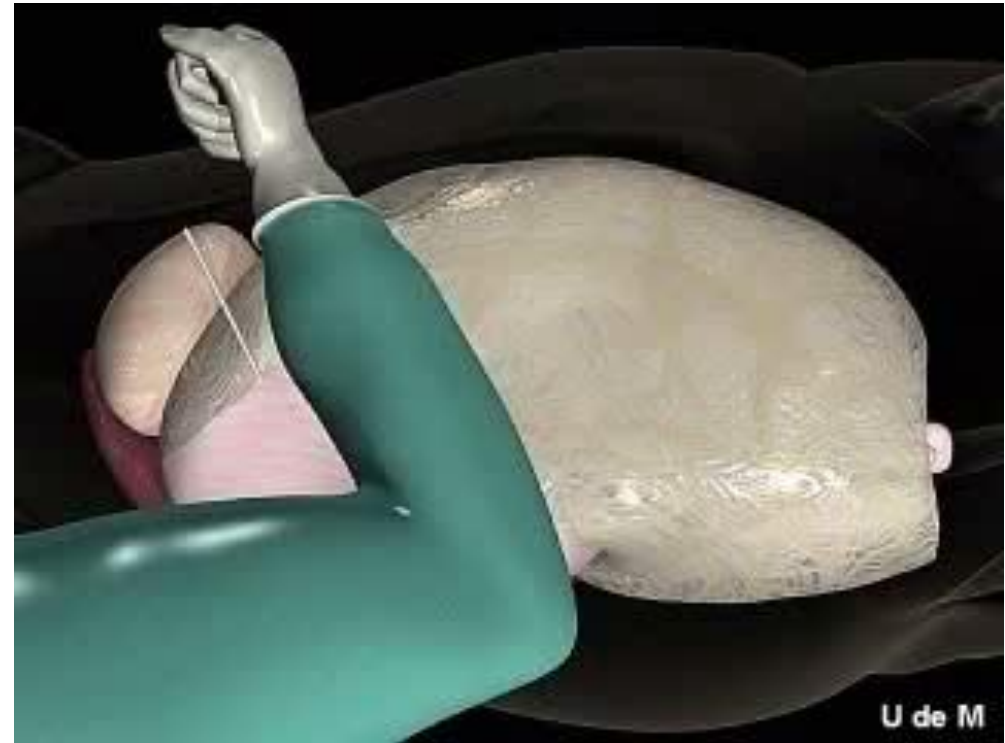
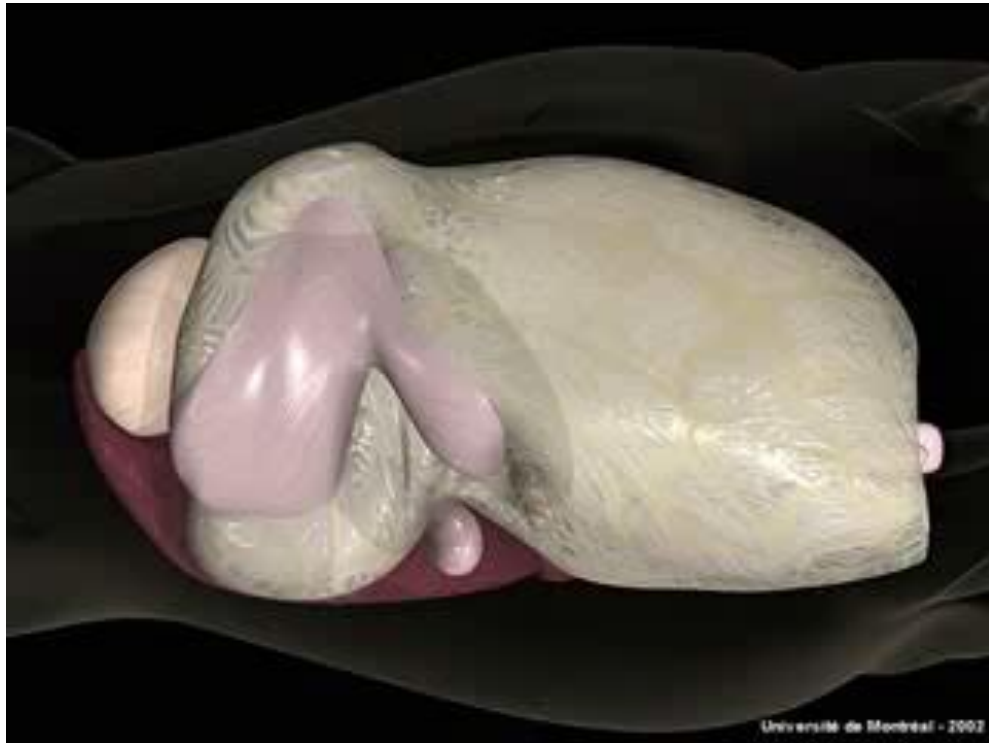


ABOMASOPEXIA

Laparotomia paramediana

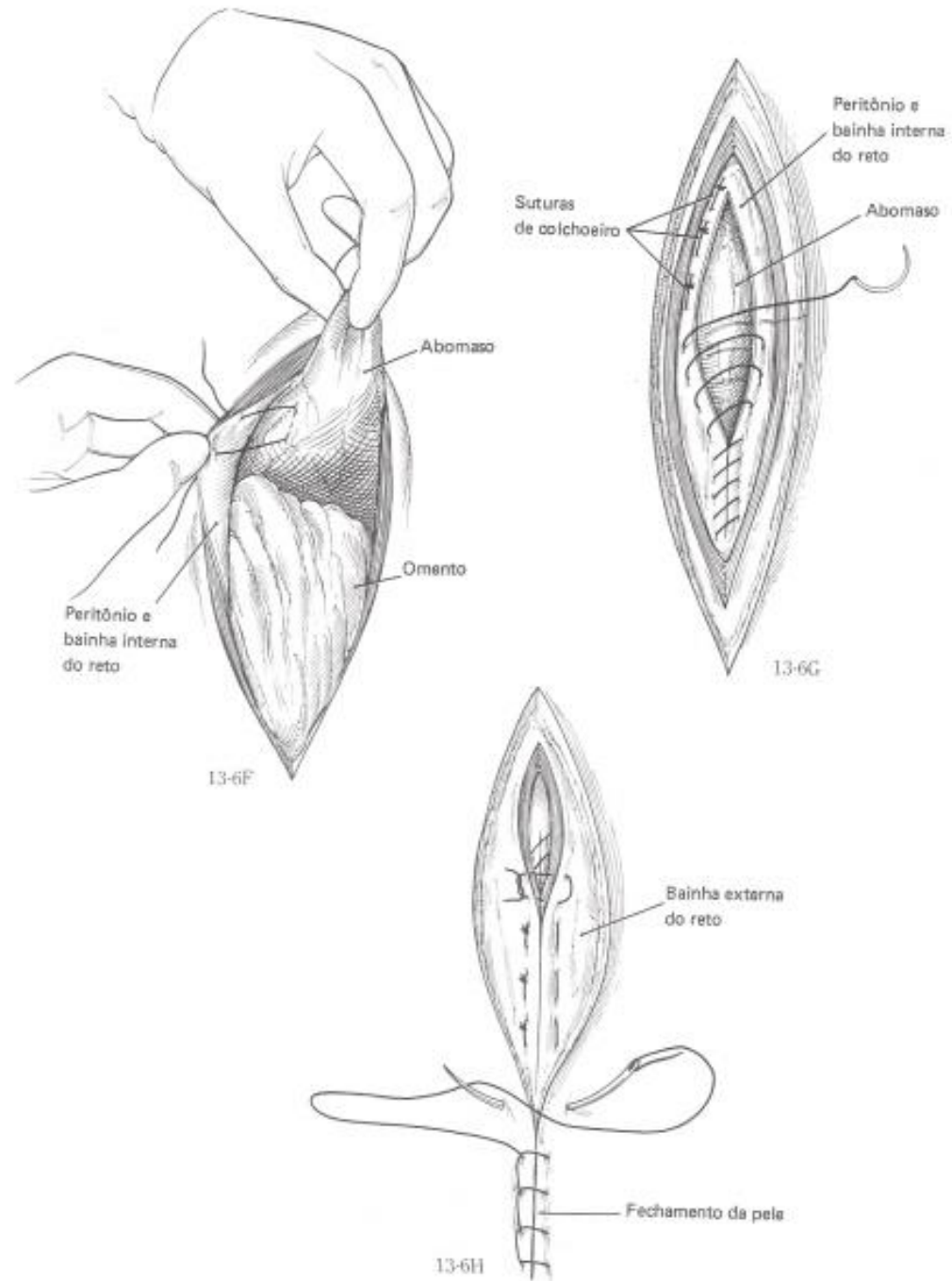


Laparotomia paramediana



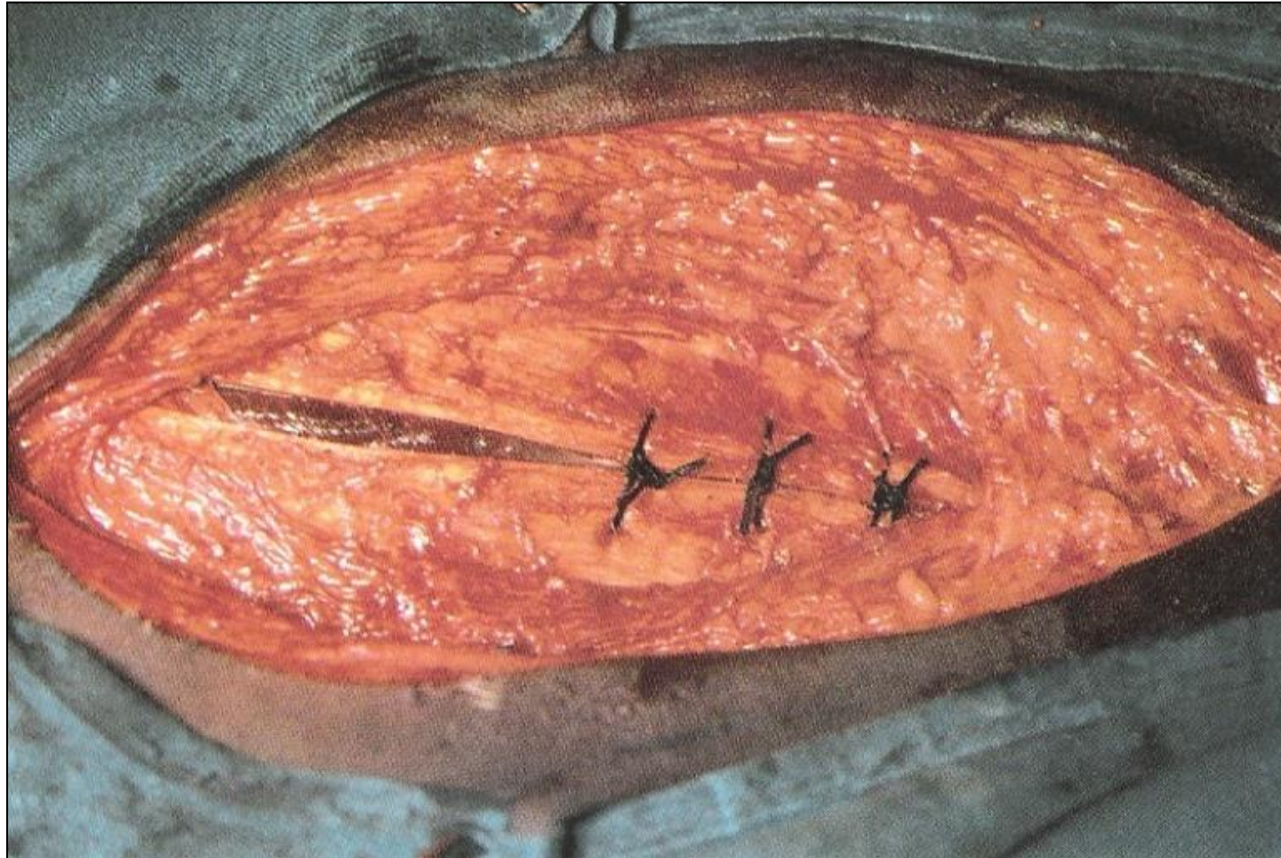
ABOMASOPEXIA

Laparotomia paramediana



ABOMASOPEXIA

Laparotomia paramediana



Obrigado

Prof. Dr. Rodrigo Romero Corrêa
Departamento de Cirurgia FMVZ-USP

romero@usp.br