

Chew on this: amoebic trogocytosis and host cell killing by *Entamoeba histolytica*

Katherine S. Ralston

Department of Microbiology and Molecular Genetics, University of California, Davis, CA 95616, USA

***Entamoeba histolytica* was named ‘histolytica’ (from *histo-*, ‘tissue’; *lytic-*, ‘dissolving’) for its ability to destroy host tissues. Direct killing of host cells by the amoebae is likely to be the driving factor that underlies tissue destruction, but the mechanism was unclear. We recently showed that, after attaching to host cells, amoebae bite off and ingest distinct host cell fragments, and that this contributes to cell killing. We review this process, termed ‘amoebic trogocytosis’ (*trogo-*, ‘nibble’), and how this process interplays with phagocytosis, or whole cell ingestion, in this organism. ‘Nibbling’ processes have been described in other microbes and in multicellular organisms. The discovery of amoebic trogocytosis in *E. histolytica* may also shed light on an evolutionarily conserved process for intercellular exchange.**

Amoebiasis

Entamoeba histolytica is a protozoan parasite and the causative agent of amoebiasis in humans (Figure 1). *E. histolytica* cysts are found in contaminated food or water sources, and, following ingestion and excystation, motile amoeboid trophozoites colonize the colon (Figure 1). This can be asymptomatic or result in diarrheal symptoms. Trophozoites can invade the intestine, resulting in amoebic colitis with profound ulceration that is associated with bloody diarrhea (Figure 1). They can also disseminate and cause abscess formation in other sites in the body, most commonly in the liver (Figure 1). While it is difficult to obtain an exact measurement of the burden of disease, *E. histolytica* is remarkably common in developing nations, and is responsible for an estimated 50 000 000 diarrheal infections per year [1]. Amoebic liver abscess results in an estimated 100 000 deaths annually [1]. Birth cohort studies indicate that in the first year of life approximately 50% of infants in an urban slum in Dhaka, Bangladesh are infected [2]. Malnourishment and stunting are associated with repeated infections in children [3]; hence, children are a vulnerable group.

There is no vaccine, although acquired resistance to infection is associated with mucosal IgA directed to the

trophozoite surface D-galactose/*N*-acetyl-D-galactosamine (Gal/GalNAc)-specific lectin, suggesting that the Gal/GalNAc lectin represents a vaccine candidate [4]. Vaccination with fragments of the Gal/GalNAc lectin heavy chain has been shown to be protective in animal models [5–12]. Treatment with metronidazole is the standard [13,14] although it has toxic side effects [13] and *E. histolytica* can develop resistance *in vitro* [15,16]. Some second-line drugs are available [13,14], and the repurposed drug auranofin holds promise as a potential new therapeutic option [17]. Given the paucity of available drugs, resistance is a concern [15,16]. Improved understanding of disease pathogenesis and the development of new therapeutics are key priorities.

Host cell killing and pathogenesis

The organism was named ‘histolytica’ for its ability to damage tissue. *E. histolytica* trophozoites are profoundly cytotoxic, making it likely that direct killing of host cells underlies the ability of trophozoites to invade and destroy host tissues [18–22]. Despite the fundamental importance in pathogenesis, the precise mechanism by which *E. histolytica* trophozoites kill host cells has been unclear. In studies where *E. histolytica* trophozoites were incubated with a combination of living and pre-killed host cells, they appeared to preferentially ingest pre-killed cells, which suggested that the trophozoites kill host cells before ingestion [23]. Thus the prevailing model has been that trophozoites first kill host cells before ingesting dead cell corpses [18,23,24].

Cell killing is an active process

Host cell killing by *E. histolytica* is contact-dependent and requires the trophozoite surface Gal/GalNAc lectin for host cell attachment [25,26]. Gal/GalNAc lectin engagement might also transduce signals that initiate the cell killing mechanism [26]. An intact, viable trophozoite is required and there does not appear to be a secreted toxin because neither trophozoite extracts, supernatants, nor killed trophozoites are cytotoxic [19,20,27]. Killing is an active process because amoebic cytoskeletal rearrangements are also necessary [25]. In addition, trophozoite acidic intracellular vesicles have been implicated in cell killing because the addition of weak bases raises the vesicular pH and blocks cytotoxicity [28]. The precise role of these vesicles in killing is unknown. In host cells, calcium

Corresponding author: Ralston, K.S. (ksralston@ucdavis.edu).

Keywords: *Entamoeba*; phagocytosis; trogocytosis; cytotoxic; cell death.

1471-4922/

© 2015 Elsevier Ltd. All rights reserved. <http://dx.doi.org/10.1016/j.pt.2015.05.003>

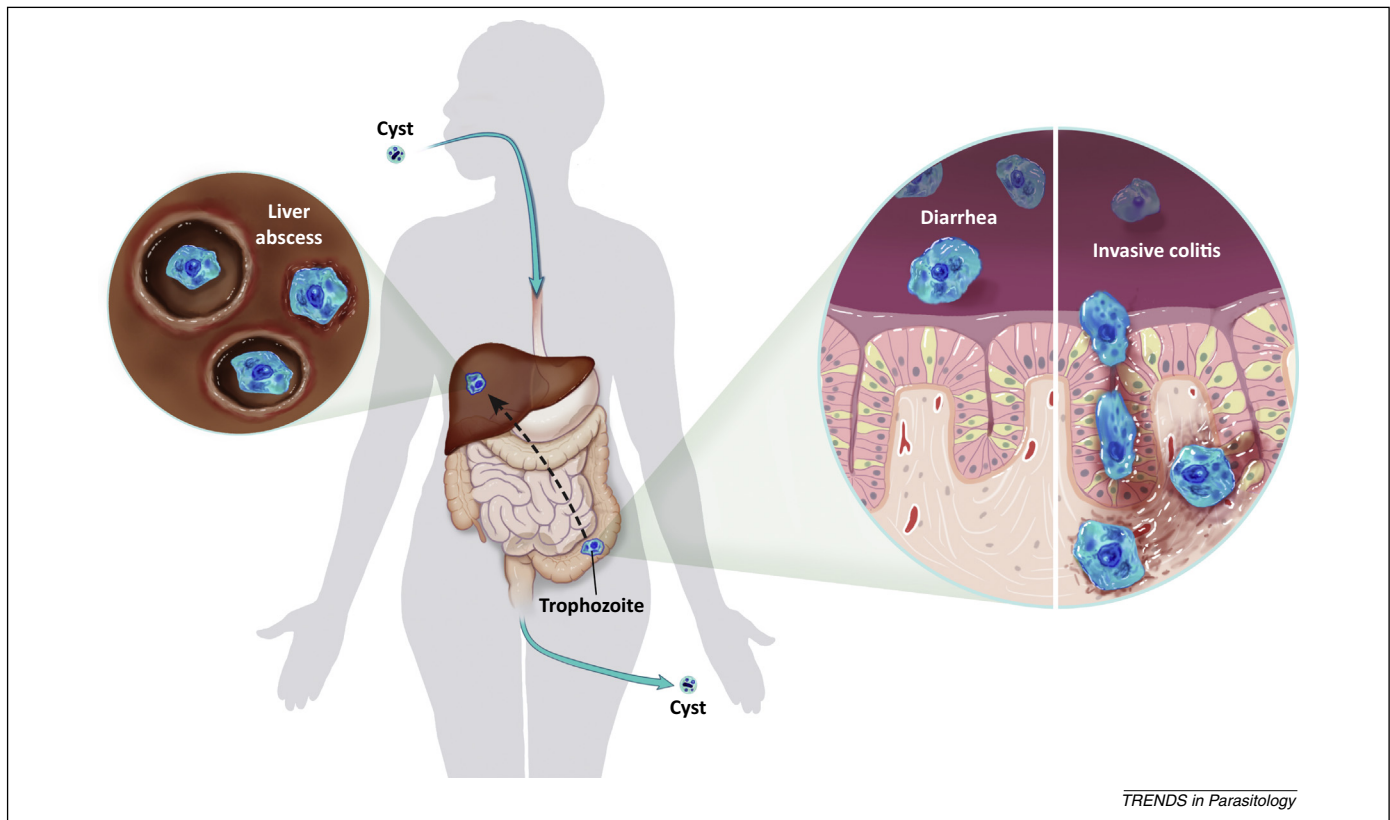


Figure 1. Amoebiasis in humans. Model for the *Entamoeba histolytica* life cycle and pathogenesis of disease in humans. Infection occurs following the ingestion of *E. histolytica* cysts that are found in contaminated water or food sources. Following excystation, motile amoeboid trophozoites colonize the large intestine. Encystation can occur to produce new cysts. Both cysts and trophozoites are found in the feces of infected individuals. Colonization with *E. histolytica* trophozoites can be asymptomatic or lead to diarrheal symptoms, and the trophozoites are thought to be noninvasive in these situations. Trophozoites can also invade and damage the large intestine, resulting in ulceration and dysentery symptoms. Less commonly, trophozoites can spread to other tissues in the body, and they most often spread to the liver. Trophozoites that have spread outside the intestine result in abscesses that can be fatal.

becomes elevated shortly after contact with an amoebic trophozoite [27]. Global dephosphorylation of tyrosine residues has also been reported to occur in host cells following contact [29].

Putative cell killing effectors

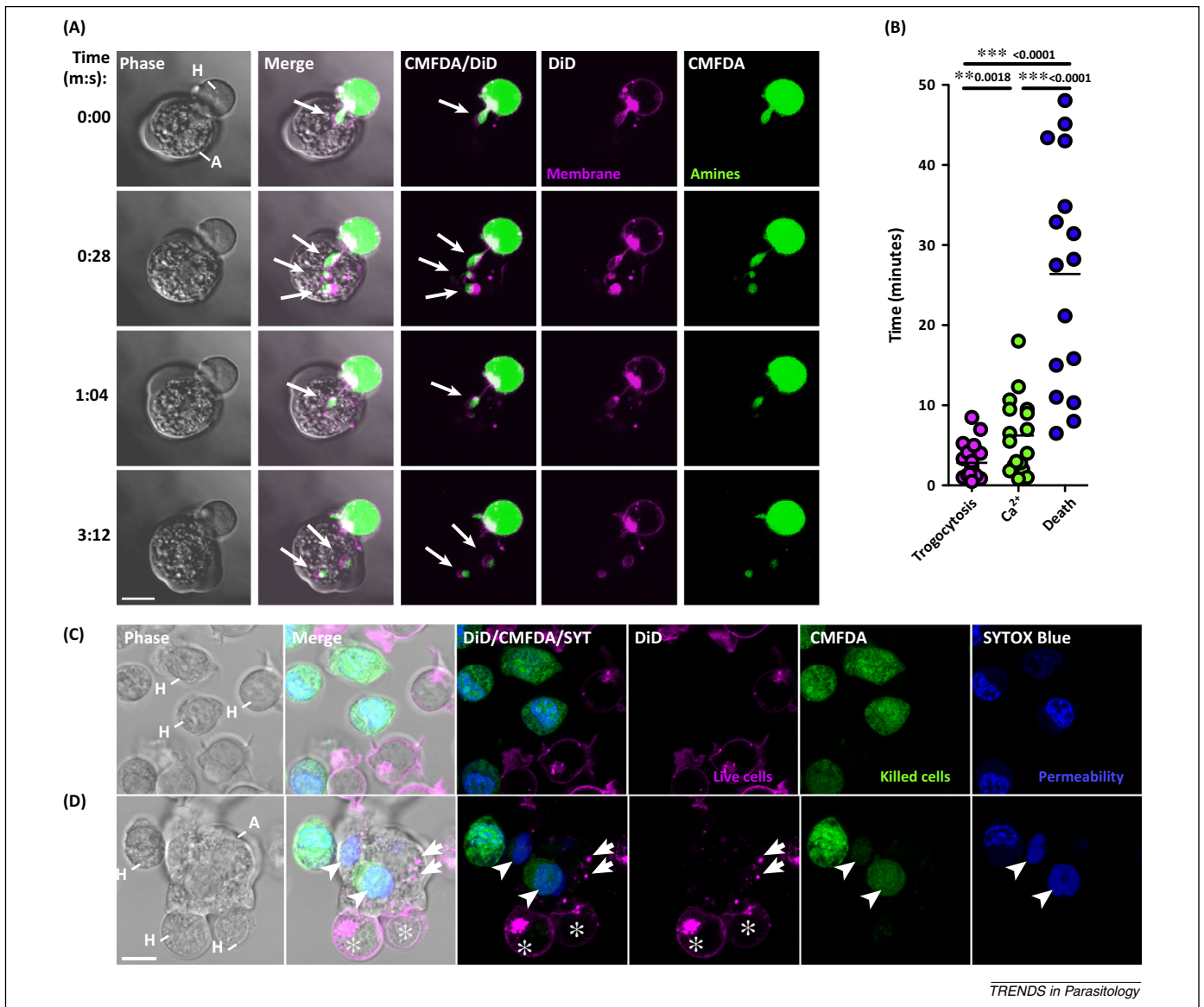
It has been hypothesized that the pore-forming ‘amoebapore’ proteins mediate cell killing by acting as secreted toxins [30], although the lack of killing activity in amoebic lysates or supernatants is not supportive of the presence of a toxin [19,20]. The three amoebapores, A, B, and C, have sequence similarity to the mammalian membrane-permeabilizing proteins NK-lysin and granulysin [31]. All three amoebapores induce pore formation in synthetic liposomes [32]. However, there is no experimental evidence to demonstrate secretion and transfer of amoebapores to host cells. The amoebapores require pH ~5.2 for pore-forming activity [32], due to pH-dependent dimerization [33], therefore a low pH environment would be needed for activity on host cell membranes. Amoebapore A has been epigenetically silenced, and this led to a decrease in liver abscess diameter in mice [34,35], but silenced trophozoites were not defective in the SCID-hu-int model of intestinal amoebiasis (in which human intestinal xenografts are established in severe combined immunodeficient mice) [36], and they were not defective in tissue invasion in an *ex vivo* human intestine model [37]. Hence amoebapore A does not appear to be absolutely required for tissue destruction *in*

vivo, although it was required for monolayer disruption *in vitro* [35].

E. histolytica possesses genes encoding at least 50 cysteine proteases, some of which are secreted [38]. It has been hypothesized that secreted amoebic cysteine proteases are also involved in cell killing [39–41], but again the lack of killing activity in amoebic lysates or supernatants is not supportive of a role for proteases in cell killing [19,20]. The assay used to examine the potential contribution of cysteine proteases to cell killing was the measurement of the total dye remaining in a methylene blue stained monolayer following exposure to trophozoite extracts or cysteine protease-overexpressing trophozoites. The assay does not specifically measure cell death and is complicated by the monolayer-disrupting activity of amoebic cysteine proteases. Amoebic cysteine proteases are capable of acting on a variety of host substrates including mucin, collagen, and extracellular matrix (ECM) from vascular smooth muscle [42–46]. Studies employing *ex vivo* human intestine [37] suggest that amoebic cysteine proteases, particularly CP-A5, are likely to play a crucial role in tissue invasion and damage that is independent of cell killing [37,47,48].

Amoebic trophocytosis

To improve understanding of the mechanisms underlying host cell killing, we recently employed live-imaging studies to examine cell killing in real time. Unexpectedly, we found that, following host cell attachment, *E. histolytica*



TRENDS in Parasitology

Figure 2. Amoebic trogocytosis is specific to live human cells and occurs before human cell death. **(A)** Example of amoebic trogocytosis. Time-lapse confocal microscopy demonstrating the ingestion of fluorescently labeled 'bites' of human cell material by an amoebic trophozoite. Human Jurkat T cells were pre-labeled with 1,1'-dioctadecyl-3,3,3',3'-tetramethylindodicarbocyanine, 4-chlorobenzenesulfonate (DiD) and 5-chloromethylfluorescein diacetate (CMFDA). DiD (shown in pink) labels the plasma membrane, whereas CMFDA (shown in green) labels amines. H, human cell; A, amoeba. Arrows, ingested 'bites.' Time is indicated in minutes:seconds (m:s). Bar, 10 μ m. **(B)** Timing of the first occurrence of events, as detected by live confocal microscopy, relative to the time that trophozoites were combined with human Jurkat T cells. Human Jurkat T cells were pre-labeled with DiD and pre-loaded with the calcium indicator Fluo4. SYTOX blue was present in the media during imaging. Amoebic trogocytosis was detected by the appearance of DiD-labeled human cell bites within the trophozoites. Calcium elevation was assessed by the appearance of a sustained increase in the intensity of Fluo4. Cell death was assessed by the uptake of SYTOX blue, reflecting loss of membrane integrity. Sixty cells from 15 independent experiments were quantified; shown are the individual datapoints, means, and SDs. *P* values from statistical analyses are indicated. **(C,D)** Human Jurkat T cells were either alive or pre-killed via heat treatment, and separately labeled. Live human cells were labeled with DiD (pink). Heat-killed human cells were labeled with CMFDA (green). SYTOX blue was present in the media during imaging. **(C)** Pre-killed and live human cells were combined at an equal ratio in the absence of *Entamoeba histolytica*. SYTOX blue labeling demonstrates that heat-killed human cells are dead. **(D)** Pre-killed and live human cells were combined with *E. histolytica* at a ratio of one amoeba to five pre-killed and five living human cells. Pre-killed cells were ingested whole (arrowheads, ingested pre-killed cells). Live cells (asterisks) were ingested by amoebic trogocytosis (arrows, ingested bites of live cells). Bar, 10 μ m. Reprinted with permission from [49].

trophozoites ingested distinct 'bites' of host cells (Figure 2A), which we termed 'amoebic trogocytosis' [49]. Within 1 min of host cell contact, amoebic trogocytosis was initiated. Host cells were alive when this process began, but eventually died as evidenced by loss of membrane integrity (Figure 2B) [49]. Interestingly, once host cells had been killed, amoebic ingestion ceased and trophozoites detached from dead cell corpses [49]. When trophozoites were incubated with a combination of living and pre-killed host cells, the live host cells were ingested by

amoebic trogocytosis, whereas the pre-killed host cells were ingested whole (Figure 2C,D). The ingestion of pre-killed cells is consistent with previous studies [23]. It is possible that pre-killed host cells have different surface characteristics from cells directly killed by the amoebae, and that these surface characteristics determine the type of ingestion that occurs (see below).

Combined use of pharmacological, biochemical, and genetic approaches demonstrated that amoebic trogocytosis requires physiological temperature, amoebic actin

Table 1. Amoebic molecules with roles in amoebic trogocytosis and phagocytosis in *E. histolytica*^a

Amoebic molecule	Process	Function (or subcellular location)	Host cell types	Refs
Gal/GalNAc lectin	Amoebic trogocytosis and phagocytosis	Attachment to Gal or Gal/NAc, initiation of amoebic trogocytosis	Live cells (numerous cell lines and cell types)	[4,23,26,49,69]
EhRom1	Phagocytosis	Attachment, cleavage of Gal/GalNAc lectin and unknown substrates	Live CHO cells, apoptotic CHO cells, erythrocytes	[70,71]
EhMSP-1	Phagocytosis	Attachment, cleavage of unknown substrates	Live Jurkat cells, apoptotic Jurkat cells	[73]
SREHP	Phagocytosis	Attachment	Apoptotic Jurkat cells	[74]
Calreticulin	Phagocytosis	Attachment to C1q and unknown substrates	Apoptotic Jurkat cells, apoptotic Jurkat cells opsonized with C1q, ionophore-treated erythrocytes	[76]
TMK39	Phagocytosis	Attachment	Apoptotic Jurkat cells	[77]
TMKb1-9	Phagocytosis	Attachment	Fixed CHO monolayers	[78]
PATMK	Phagocytosis	Attachment	Ionophore-treated erythrocytes	[79]
EhSTIRP	Phagocytosis	Attachment	Live CHO cells	[82]
EhCPADH	Phagocytosis	Attachment	Erythrocytes	[83]
KERP1	Phagocytosis	Attachment	Fixed Caco2 monolayers, fixed CHO monolayers	[84,85]
EhC2PK	Amoebic trogocytosis and phagocytosis	Initiation of ingestion, binding to amoebic PS and recruitment of EhCaBP1	Live Jurkat cells, erythrocytes	[49,67]
EhCaBP1	Phagocytosis	Initiation of ingestion, recruitment of EhAK1	Erythrocytes	[89,90]
EhAK1	Phagocytosis	Phosphorylation of G-actin	Erythrocytes	[91]
EhCaBP3	Phagocytosis	Initiation of ingestion, binding to amoebic membrane and actin, actin remodeling	Erythrocytes	[92]
EhCaBP5	Phagocytosis	Myosin light chain	Erythrocytes	[93]
Myosin	Phagocytosis	Actin binding, force transduction, intracellular trafficking	Likely numerous cell types and both live and dead cells	[87]
Actin	Amoebic trogocytosis and phagocytosis	Cell shape changes, cell motility, intracellular trafficking	Likely numerous cell types and both live and dead cells	[49,87]
PI3K	Amoebic trogocytosis and phagocytosis	Generation of phosphoinositides, leading to phagosome formation and actin remodeling	Live Jurkat cells, erythrocytes	[49,66,94]
EhFP4 and other FYVE-domain proteins	Phagocytosis	Phosphatidylinositol 3-phosphate-binding	Live CHO cells, erythrocytes	[64,94]
p21RacA	Phagocytosis	Likely regulates actin remodeling	Erythrocytes	[66]
EhRabB	Phagocytosis	(Phagocytic cup)	Erythrocytes	[99–101]
EhRab5	Phagocytosis	Pre-phagosomal vacuole formation	Erythrocytes	[103]
EhRab7A	Phagocytosis	Phagosome maturation	Erythrocytes	[103]
EhRab7B	Phagocytosis	Lysosome maturation	Erythrocytes	[104]

^aLikely functions of each protein are summarized or, in cases where functional information is not available, subcellular localization is indicated. Host cell types that have been characterized are listed. Abbreviations: CHO, Chinese hamster ovary cell; CPADH, cysteine protease and adhesin complex; EhSTIRP, serine-, threonine-, and isoleucine-rich protein family; Gal/GalNAc, D-galactose/*N*-acetyl-D-galactosamine-specific lectin; PS, phosphatidyl serine; TMK, transmembrane kinase.

rearrangements, Gal/GalNAc lectin, EhC2PK (*E. histolytica* C2-domain-containing protein kinase), and PI3K (phosphoinositide 3-kinase) signaling [49]. Although these proteins also have roles in phagocytosis in *E. histolytica* (Table 1), amoebic trogocytosis is predominant with living host cells. Therefore, interference with actin, Gal/GalNAc lectin, EhC2PK, or PI3K quantitatively reduced amoebic trogocytosis of living human cells, as measured by imaging flow cytometry. In all cases, when amoebic trogocytosis was quantitatively reduced, there was a corresponding reduction in host cell death. Cell death following amoebic trogocytosis might be due to the accumulation of physical damage in the nibbled cell. Host cells retained membrane integrity for an average of ~27 min (Figure 2B) [49], suggesting that either numerous bites are needed to precipitate cell death or that, following the initial damage,

a cell death program is initiated that takes some time to complete.

Trogocytosis in other organisms

Morphologically similar processes occur in a variety of amoebae. In some cases, these processes have been termed ‘trogocytosis’, but the extent to which the mechanisms are similar is not yet known. The term was first coined in studies of the interactions between the pathogenic amoeba *Naegleria fowleri* and host cells [50]. Before this there were reports of ‘nibbling, piecemeal’ ingestion of red blood cells by *N. fowleri* and *Hartmanella* [51,52]. A process termed ‘nibbling’ has also been described in *Dictyostelium caveatum* during predation of other *Dictyostelium* species [53,54]. Because amoebae do not form a taxonomic group, it is notable that nibbling processes have been observed in

numerous amoebae from at least two eukaryotic supergroups, the Amoebozoa and Excavates.

In addition to the occurrence of nibbling processes in amoebae, a morphologically similar process, also termed trogocytosis, occurs in multicellular organisms [55]. This was first described at the immunological synapse in mammalian immune cells, where lymphocytes obtain plasma membrane fragments and surface molecules from antigen-presenting cells [56–59]. Trogocytosis is now recognized to occur between a variety of different immune cell types [60]. A key difference between the processes in multicellular organisms and in amoebae is that trogocytosis in multicellular organisms does not appear to result in cell death. The reason for this distinction is not yet apparent, but this may be because the described examples of trogocytosis in multicellular organisms involve the exchange of fewer bites, and these bites are primarily fragments of cell membrane. By contrast, in amoebic trogocytosis, ingested bites commonly contain target cell cytoplasm and can also contain organelles [49,50].

Amoebic trogocytosis versus phagocytosis in *E. histolytica*

An important question is whether amoebic trogocytosis is mechanistically distinct from phagocytosis in *E. histolytica*. Because the underlying mechanistic differences are not yet apparent, we will refer here to ‘trogocytosis’ as ingestion in which bites of cellular material are internalized, and ‘phagocytosis’ as ingestion in which an entire cell is internalized. In other organisms, the mechanistic basis for trogocytosis is not known and specific signaling processes have not been well defined. Notably, in T cell trogocytosis two small GTPases have been identified that are involved, TC21 and RhoG [61]. RhoG has an established role in phagocytosis [61]. In addition, trogocytosis by CD4⁺ T cells has been shown to involve actin rearrangements as well as PI3K, Src, and Syk signaling [61,62]. Thus the relationship between trogocytosis and phagocytosis is not understood in any organism, although it appears that the two processes share some features.

Effect of target cell deformability

In the case of amoebic trogocytosis, the occurrence of this process or phagocytosis appears to depend on qualities of the target cell, including its deformability, whether it is viable, and its size (Figure 3). Target cell deformability appears to be important during *E. histolytica* ingestion because cell distortion during phagocytosis by *E. histolytica* has been previously reported [63,64]. During ingestion of Chinese hamster ovary (CHO) cells, a ‘tunnel’ of CHO cell material was stretched into the trophozoite, which sometimes preceded ingestion of the entire CHO cell, and sometimes persisted indefinitely [64]. A similar tunnel of material, referred to as ‘suction’ or ‘micro-phagocytosis’, occurred during the ingestion of human red blood cells, and 90% of human red blood cells were ingested in this manner [63]. The remaining 10% were directly ingested as a single unit [63]. We have observed similar tunnels during amoebic trogocytosis, and have sometimes detected both the

appearance of a tunnel and bites (e.g., Figure 2A), suggesting that the observed bites may potentially fragment off from the stretched tunnel of intracellular material. In the case of red blood cells, increasing the rigidity by pre-exposing red blood cells to increasing concentrations of fixative before co-incubation with trophozoites led to a reduction in micro-phagocytosis [65]. Therefore, natural differences in the deformability of different cell types could influence the extent of fragmentation that occurs during ingestion, and whether phagocytosis or amoebic trogocytosis occurs.

Effect of target cell viability

The viability of the target cell may also be an important determinant for the occurrence of amoebic trogocytosis or phagocytosis (Figure 3). When trophozoites were coincubated with a combination of living host cells, and host cells that had been pre-killed, the living cells were ingested by amoebic trogocytosis and the pre-killed cells were ingested by phagocytosis (Figure 2D) [49]. The dependence of amoebic trogocytosis on living host cell targets may again suggest that the deformability of the target cell influences its fate during amoebic ingestion because dead cells are likely to be less deformable than living cells. Alternatively, differences in amoebic surface proteins that bind to living versus dead cells (see below) may activate different downstream signaling pathways in the trophozoite, leading to amoebic trogocytosis of live cell targets and phagocytosis of dead cell targets. An additional possibility is that living host cells actively contribute to amoebic trogocytosis in some way, making amoebic trogocytosis only possible with living host cell targets.

Effect of target cell size

Finally, whether amoebic trogocytosis or phagocytosis occurs also depends the size of the target cell. With smaller cells, such as human red blood cells (diameter ~7 µm, thickness ~2 µm), both micro-phagocytosis and phagocytosis were reported to occur, and we have also detected the occurrence of amoebic trogocytosis [49,63,65]. Very little red blood cell material remains extracellular following ingestion [49,63,65], reflecting that either the entire red blood cell has been ingested in successive bites or that phagocytosis has occurred. Slightly larger cells such as human Jurkat T cells (diameter ~12 µm, thickness ~12 µm) are also ingested by both amoebic trogocytosis and phagocytosis, although the balance is shifted toward amoebic trogocytosis in this case [49]. We detected up to ~20% of Jurkat cells that are ingested by phagocytosis, with the remainder being ingested by amoebic trogocytosis [49]. Significantly more material remains extracellular in this case, including the prominent, undigested Jurkat cell nuclei [49].

Common features of amoebic trogocytosis and phagocytosis

Because no unique signaling pathways specific to trogocytosis have been defined in any organism, it has only been possible to test whether proteins with known roles in phagocytosis in *E. histolytica* also play a role in amoebic trogocytosis. By defining that amoebic trogocytosis

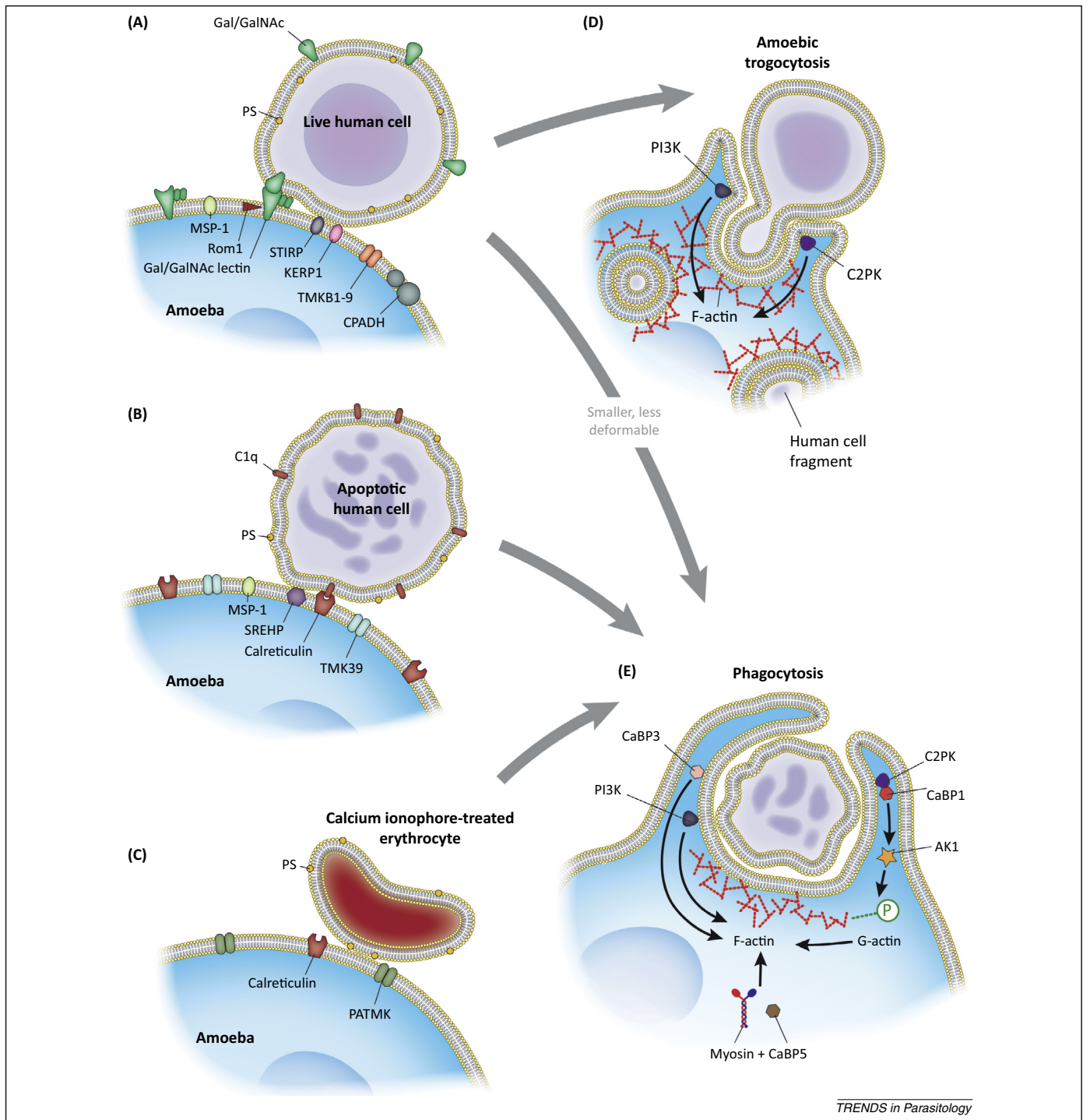


Figure 3. Amoebic trogocytosis and phagocytosis. Model for amoebic attachment to different host cell types, and signal transduction during amoebic trogocytosis or phagocytosis. **(A)** Attachment to live host cells is mediated by the amoebic Gal/GalNAc lectin that binds to Gal or GalNAc residues on host surface proteins. The Gal/GalNAc lectin consists of a heavy chain that binds to Gal or GalNAc, a covalently associated light chain, and a non-covalently associated intermediate chain. The rhomboid protease EhRom1 can cleave the Gal/GalNAc lectin heavy chain. The metalloprotease MSP-1 is also involved. Other amoebic proteins that are involved in attachment to live cells include the family of predicted transmembrane serine-, threonine-, and isoleucine-rich proteins, known as EhSTIRP, the transmembrane kinase family member TMKB1-9, and the 112 kDa cysteine protease and adhesin complex CPADH. KERP1 may also be involved in attachment. **(B)** Attachment to host cells that have been induced to undergo apoptosis involves the serine-rich *Entamoeba histolytica* protein SREHP, MSP-1, and the transmembrane kinase family member TMK39. Attachment to host cells that have been induced to undergo apoptosis cells and have subsequently been opsonized with C1q or collectin family members involves amoebic calreticulin. **(C)** Attachment to calcium ionophore-treated erythrocytes involves the transmembrane kinase family member PATMK and calreticulin. Exposed phosphatidyl serine (PS) appears to be a ligand for amoebic binding. **(D,E)** Larger or more deformable cells are more likely to be ingested by amoebic trogocytosis, while smaller or less deformable cells are more likely to be ingested by phagocytosis. Pre-killed cells that are killed via heat treatment are ingested by phagocytosis (Figure 2C), making it likely that host cells that have been induced to undergo apoptosis and calcium-treated erythrocytes are also ingested by phagocytosis. Dead cells are also likely to be less deformable. **(D)** Signal transduction in the initiation of amoebic trogocytosis includes PI3K and EhC2PK, both of which influence actin polymerization. **(E)** Signal transduction in the initiation of phagocytosis includes EhCaBP3 and PI3K, both of which influence actin polymerization. EhC2PK also recruits EhCaBP1, which recruits EhAK1. EhAK1 phosphorylates G-actin, and thereby promotes actin polymerization. EhCaBP5 appears to be a light chain of myosin.

TRENDS in Parasitology

requires physiological temperature, amoebic actin rearrangements, Gal/GalNAc lectin, and EhC2PK and PI3K signaling (Figure 3), thus far all tested proteins that are required for phagocytosis [23,66,67] are also required for amoebic trogocytosis [49]. In addition, it appears that amoebic trogocytosis is under 'feed-forward' regulation, as has been demonstrated during amoebic phagocytosis of beads [68]. During amoebic phagocytosis of beads, trophozoites that had previously been exposed to beads up-regulated numerous different genes and were 'primed' to undergo enhanced ingestion of beads relative to trophozoites that had not been exposed to beads [68]. Similarly, trophozoites that had previously undergone amoebic trogocytosis were primed to undergo more ingestion and more cell killing than trophozoites that had not undergone amoebic trogocytosis [49].

Phagocytosis in *E. histolytica*

As outlined above, some features are common to both amoebic trogocytosis and phagocytosis. It is not yet clear whether there are also mechanistic distinctions between the two processes. We summarize here the current paradigms for phagocytosis in *E. histolytica*, highlighting aspects that could potentially be relevant to amoebic trogocytosis.

Target cell attachment in phagocytosis

Many *E. histolytica* surface proteins have roles in attachment to host cells, including some with roles that are specific for live or dead cells, and this may be relevant to the specificity of amoebic trogocytosis for living cells (Figure 3). Engagement of different surface receptors by live and dead host cells could potentially trigger different ingestion processes. The amoebic Gal/GalNAc lectin plays a more significant role in attachment to living cells than to apoptotic cells or calcium ionophore-treated erythrocytes [23,69]. The rhomboid protease EhRom1 can cleave the Gal/GalNAc lectin heavy subunit [70], and knockdown of EhRom1 reduces attachment [71] as well as cell motility [72]. The attachment defect in the EhRom1 knockdown mutant was specific to live host cells, and attachment to apoptotic host cells was normal [71]. These data together imply a significant role for the Gal/GalNAc lectin in recognition of living cells. There is some evidence that suggests signaling downstream of the lectin might regulate amoebic trogocytosis. Blocking-antibody studies previously suggested that lectin engagement plays a role in initiating the cell killing program [26], and lectin signaling also appears to be crucial in regulating amoebic trogocytosis because the same blocking antibody reduced amoebic trogocytosis [49]. Hence it is possible that engagement of the Gal/GalNAc lectin by living cells triggers ingestion via amoebic trogocytosis.

In the recognition of dead cells, amoebic binding to host cells that have been chemically induced to undergo apoptosis has been the most characterized. The surface metalloprotease EhMSP-1 was shown to have a role in attachment to both live and apoptotic cells [73]. A blocking antibody directed to the serine-rich *E. histolytica* protein SREHP reduced attachment to apoptotic host cells but had a much smaller effect on attachment to live host cells [74].

E. histolytica trophozoites can bind to phosphatidylserine (PS) [69]. Opsonization of apoptotic cells with complement C1q or collectin family members enhanced uptake by *E. histolytica* [75], and C1q has been shown to bind to trophozoite surface calreticulin [76]. Together, these findings suggest that both PS and additional physiological ligands present on apoptotic cells may be important determinants for amoebic attachment.

Additional proteins with roles in attachment include the transmembrane kinase family members TMK39 [77], TMKb1-9 [78], and PATMK [79]. There are ~90 genes encoding TMKs in the *E. histolytica* genome [80,81], making it likely that other TMKs are involved in recognition and attachment to different ingestion targets. Most of the TMKs await functional characterization. Another gene family involved in attachment is the family of predicted transmembrane serine-, threonine-, and isoleucine-rich proteins known as EhSTIRP [82]. In addition, the 112 kDa cysteine protease and adhesin complex, EhC-PADH, contributes to attachment [83]. Finally, the lysine- and glutamic acid-rich protein KERP1 may also be involved in host cell attachment [84,85]. Notably, the recent cell surface proteome of *E. histolytica* identified 693 candidate membrane proteins but, strikingly, 49% of the identified proteins lack conserved surface-association domains or motifs [86]. Hence there are far more proteins present on the trophozoite surface than previously understood, and it is likely that at least some of these proteins contribute to attachment.

Initiation of phagocytosis

As in other organisms, phagocytosis in *E. histolytica* requires actin and myosin [87]. In the process of initiating phagocytosis and regulating actin rearrangements, there are roles for a family of calcium-binding proteins (CaBPs) unique to *Entamoeba* (Figure 3) [88]. There are 27 genes encoding CaBPs with multiple EF-hand calcium-binding domains in the *E. histolytica* genome [88]. Characterized CaBPs do not have conserved actin-binding or lipid-binding domains, but many of them functionally interact with actin or lipids, making it possible that, in addition to actin remodeling, CaBPs are also involved in initiating membrane deformation, which is also a necessary event in initiating ingestion. Some of the CaBPs represent independent regulators of ingestion, making it possible that differential triggering of CaBPs could influence the ingestion mechanism engaged by different host cell targets. Additional complexity to CaBP signaling comes from the fact that some key protein-protein and protein-lipid interactions are calcium-independent, whereas others are dependent on calcium.

Calcium-binding protein 1 (EhCaBP1), together with EhC2PK, is part of a signaling pathway that initiates ingestion. EhC2PK binds to amoebic PS in the presence of calcium and recruits EhCaBP1 to the cell membrane [67]. EhCaBP1 binds to F-actin and is crucial for F-actin dynamics because its loss affects cell proliferation, phagocytosis, and fluid-phase endocytosis [89,90]. EhCaBP1 also recruits the alpha kinase EhAK1, which was recently shown to directly phosphorylate G-actin [91]. The interaction of EhCaBP1 and EhAK1 is calcium-dependent [91],

whereas the interaction of EhCaBP1 and EhC2PK is calcium-independent [67]. Such behavior of EhCaBP1 may be responsible for giving rise to mechanistic differences in fluid-phase endocytosis versus phagocytosis and spatial regulation of actin dynamics. Another CaBP, EhCaBP3, interacts with lipids directly and may function in initiation of phagocytosis independently of the EhCaBP1/EhC2PK pathway [92]. EhCaBP3 also binds directly to actin and influences bundling and polymerization, and may regulate closure of phagocytic cups because phagocytosis is slowed when EhCaBP3 expression is knocked down [92]. Finally, another CaBP, EhCaBP5, was recently shown to interact with myosin 1B in a calcium-independent manner and may represent a myosin light chain [93].

Intracellular trafficking in phagocytosis

PI3K signaling is important in the early stages of phagosome formation, and there is a role for FYVE-domain proteins [64,94]. Following initiation of ingestion and the formation of a phagosome, intracellular trafficking in *E. histolytica* appears to be complex. The Rab, Arf, Rho, and Rac GTPase gene families are all greatly expanded in *E. histolytica* [81,95]. Many of the small GTPases, and other candidate phagosome proteins, have been identified in proteomic analyses of *E. histolytica* phagosomes and await functional characterization [79,96–98]. It is an intriguing possibility that the expansion of small GTPases reflects the complexity of ingestion in *E. histolytica*, and potentially different intracellular trafficking may take place in phagocytosis and amoebic trogocytosis. However, how the small GTPases intersect with amoebic trogocytosis is not yet clear.

Small GTPases that have been characterized to have roles in phagocytosis in *E. histolytica* include the Rac protein p21RacA [66]. Among Rab proteins, EhRabB localizes to the phagocytic cup during phagocytosis [99–101] and appears to interact with a candidate G protein-coupled receptor, EhGPCR-1 [102]. EhRab5 does not appear to be involved in endocytosis as in other organisms, and, together with a Rab7 homolog, EhRab7A, it localizes to a pre-phagosomal vacuole [103]. These pre-phagosomal vacuoles appear to arise *de novo* and are distinct from phagosomes [103]. Following dissociation of EhRab5, the pre-phagosomal vacuole fuses with the phagosome, and EhRab7A dissociates [103]. EhRab7B appears to play a role in late endosome–lysosome fusion [104]. EhRab7A may also be involved in secretion [105]. Finally, additional Rabs with likely roles in the *E. histolytica* secretory pathway include EhRab11B, EhRab8, and EhRabA [40,106,107].

Amoebic trogocytosis in tissue invasion and destruction

An important question is how amoebic trogocytosis and/or phagocytosis influence tissue invasion and damage *in vivo*. Amoebic trogocytosis occurs in the context of *ex vivo* mouse intestinal tissue [49]. Perhaps in the context of the intestinal epithelium, with the tight intercellular connections between cells, phagocytosis of entire cells is difficult or impossible. Amoebic trogocytosis of cells, on the other hand, may allow trophozoites to ingest portions of intestinal epithelial cells, with the consequence of ultimately

leading to cell death and localized tissue damage. This could potentially facilitate a subsequent opportunity for trophozoites to breach the epithelial barrier and invade. Amoebic trogocytosis might provide an opportunity for environmental sensing by allowing amoebic trophozoites to sample different cell types, or it could serve a nutritional role by providing amoebae with macromolecules that are costly to synthesize. Given the finding that amoebic trogocytosis occurs during tissue invasion, and that inhibition of amoebic trogocytosis quantitatively reduces invasion depth of *ex vivo* mouse intestinal tissue [49], there appears to be a role for this process in invasive pathology. Further suggesting a role for amoebic trogocytosis in tissue damage, in a 3D liver culture model, trophozoites invading the upper layer of liver sinusoidal endothelial cells (LSEC) were observed to contain fragments of the LSEC, potentially reflecting the occurrence of amoebic trogocytosis [108].

Concluding remarks

Tissue lysis underlies pathogenesis of invasive amoebiasis and is the feature for which the pathogen was named. Direct killing of host cells is likely to be a major contributor to tissue damage. With the discovery of amoebic trogocytosis we have a new model for how amoebae kill host cells. With this new model there are many questions about how amoebic trogocytosis interplays with phagocytosis, and whether there are distinct pathways for each process (Box 1). Given the abundance of amoebic receptors for host cell attachment, and the existence of receptors that are specific for living versus dead host cells, it is likely that engagement of different receptors triggers amoebic trogocytosis or phagocytosis. In addition, with the expansion of genes involved in vesicle trafficking, and the large number of CaBPs that regulate ingestion in this organism, it is possible that distinct intracellular machinery is engaged for each process.

Although amoebic trogocytosis has been demonstrated in a tissue model, it will be of interest to better define how this process influences pathogenesis *in vivo*. In addition, amoebic trogocytosis in *E. histolytica* may be relevant beyond amoebiasis as a cell biological process that also appears to be relevant to many organisms. ‘Nibbling’ processes occur in a variety of amoebae as well as multicellular organisms. It will be of interest to better understand why trogocytosis in multicellular organisms does not appear to result in cell death, but it is associated with killing of nibbled cells by microbes. One possibility is that a common

Box 1. Outstanding questions

- Does engagement of different amoeba surface receptors by live and dead cells dictate whether amoebic trogocytosis or phagocytosis occurs?
- What are the ligands of the large family of TMKs?
- Are there more receptors for host attachment among the large number of recently discovered *E. histolytica* membrane proteins?
- Do distinct mechanisms occur in phagocytosis and amoebic trogocytosis?
- Are there shared mechanisms for cell nibbling processes that are seen in other organisms?
- Is trogocytosis a more widespread form of intercellular exchange than we currently appreciate?

pathway for intercellular exchange has been taken to the extreme in the case of cytotoxic microbes, which appear to ingest more cellular material during nibbling, both in terms of cellular contents and the sheer amount of ingested material. Studies of amoebic trophocytosis in *E. histolytica* may shed light on a potentially evolutionarily conserved process that can result in cellular communication or death. It is certainly 'food for thought'.

Acknowledgments

I am grateful to colleagues for thoughtful comments on the manuscript, and apologize to those whose work could not be covered owing to space limitations. I thank Anita Impagliazzo for preparing the artwork in Figures 1 and 3. Work in my laboratory is supported by a National Institutes of Health (NIH) National Institute of Allergy and Infectious Diseases (NIAID) Career Transition Award (1K22AI108814).

References

- WHO/PAHO/UNESCO (1997) A consultation with experts on amoebiasis. Mexico City, Mexico 28–29 January. *Epidemiol. Bull.* 18, 13–14
- Korpe, P.S. *et al.* (2013) Breast milk parasite-specific antibodies and protection from amebiasis and cryptosporidiosis in Bangladeshi infants: a prospective cohort study. *Clin. Infect. Dis.* 56, 988–992
- Mondal, D. *et al.* (2006) *Entamoeba histolytica*-associated diarrheal illness is negatively associated with the growth of preschool children: evidence from a prospective study. *Trans. R. Soc. Trop. Med. Hyg.* 100, 1032–1038
- Petri, W.A. *et al.* (2002) The bittersweet interface of parasite and host: lectin-carbohydrate interactions during human invasion by the parasite *Entamoeba histolytica*. *Annu. Rev. Microbiol.* 56, 39–64
- Haupt, E. *et al.* (2004) Prevention of intestinal amebiasis by vaccination with the *Entamoeba histolytica* Gal/GalNac lectin. *Vaccine* 22, 611–617
- Lotter, H. *et al.* (2000) Protection of gerbils from amebic liver abscess by vaccination with a 25-mer peptide derived from the cysteine-rich region of *Entamoeba histolytica* galactose-specific adherence lectin. *Infect. Immun.* 68, 4416–4421
- Soong, C.J. *et al.* (1995) A recombinant cysteine-rich section of the *Entamoeba histolytica* galactose-inhibitable lectin is efficacious as a subunit vaccine in the gerbil model of amebic liver abscess. *J. Infect. Dis.* 171, 645–651
- Zhang, T. and Stanley, S.L., Jr (1994) Protection of gerbils from amebic liver abscess by immunization with a recombinant protein derived from the 170-kilodalton surface adhesin of *Entamoeba histolytica*. *Infect. Immun.* 62, 2605–2608
- Guo, X. *et al.* (2011) CD4⁺ and CD8⁺ T cell- and IL-17-mediated protection against *Entamoeba histolytica* induced by a recombinant vaccine. *Vaccine* 29, 772–777
- Guo, X. *et al.* (2009) Protection against intestinal amebiasis by a recombinant vaccine is transferable by T cells and mediated by gamma interferon. *Infect. Immun.* 77, 3909–3918
- Barroso, L. *et al.* (2014) Expression, purification, and evaluation of recombinant LecA as a candidate for an amebic colitis vaccine. *Vaccine* 32, 1218–1224
- Ivory, C.P. and Chadee, K. (2007) Intranasal immunization with Gal-inhibitable lectin plus an adjuvant of CpG oligodeoxynucleotides protects against *Entamoeba histolytica* challenge. *Infect. Immun.* 75, 4917–4922
- Petri, W.A., Jr (2003) Therapy of intestinal protozoa. *Trends Parasitol.* 19, 523–526
- Debnath, A. (2014) Drug development: old drugs and new lead. In *Amebiasis: Biology and Pathogenesis of Entamoeba* (Nozaki, T. and Bhattacharya, A., eds), pp. 553–564, Japan, Springer
- Samarawickrema, N.A. *et al.* (1997) Involvement of superoxide dismutase and pyruvate:ferredoxin oxidoreductase in mechanisms of metronidazole resistance in *Entamoeba histolytica*. *J. Antimicrob. Chemother.* 40, 833–840
- Wassmann, C. *et al.* (1999) Metronidazole resistance in the protozoan parasite *Entamoeba histolytica* is associated with increased expression of iron-containing superoxide dismutase and peroxiredoxin and decreased expression of ferredoxin 1 and flavin reductase. *J. Biol. Chem.* 274, 26051–26056
- Debnath, A. *et al.* (2012) A high-throughput drug screen for *Entamoeba histolytica* identifies a new lead and target. *Nat. Med.* 18, 956–960
- Ralston, K.S. and Petri, W.A., Jr (2011) Tissue destruction and invasion by *Entamoeba histolytica*. *Trends Parasitol.* 27, 254–263
- Ravdin, J.I. *et al.* (1980) Cytopathogenic mechanisms of *Entamoeba histolytica*. *J. Exp. Med.* 152, 377–390
- Ravdin, J.I. and Guerrant, R.L. (1980) Studies on the cytopathogenicity of *Entamoeba histolytica*. *Arch. Invest. Med. (Mex.)* 11 (Suppl. 1), 123–128
- Bercu, T.E. *et al.* (2007) Amebic colitis: new insights into pathogenesis and treatment. *Curr. Gastroenterol. Rep.* 9, 429–433
- Skappak, C. *et al.* (2014) Invasive amoebiasis: a review of *Entamoeba* infections highlighted with case reports. *Can. J. Gastroenterol. Hepatol.* 28, 355–359
- Huston, C.D. *et al.* (2003) Apoptotic killing and phagocytosis of host cells by the parasite *Entamoeba histolytica*. *Infect. Immun.* 71, 964–972
- Sateriale, A. and Huston, C.D. (2011) A sequential model of host cell killing and phagocytosis by *Entamoeba histolytica*. *J. Parasitol. Res.* 2011, 926706
- Ravdin, J.I. and Guerrant, R.L. (1981) Role of adherence in cytopathogenic mechanisms of *Entamoeba histolytica*. Study with mammalian tissue culture cells and human erythrocytes. *J. Clin. Invest.* 68, 1305–1313
- Saffer, L.D. and Petri, W.A., Jr (1991) Role of the galactose lectin of *Entamoeba histolytica* in adherence-dependent killing of mammalian cells. *Infect. Immun.* 59, 4681–4683
- Ravdin, J.I. *et al.* (1988) Relationship of free intracellular calcium to the cytolytic activity of *Entamoeba histolytica*. *Infect. Immun.* 56, 1505–1512
- Ravdin, J.I. *et al.* (1986) Acid intracellular vesicles and the cytolysis of mammalian target cells by *Entamoeba histolytica* trophozoites. *J. Protozool.* 33, 478–486
- Teixeira, J.E. and Mann, B.J. (2002) *Entamoeba histolytica*-induced dephosphorylation in host cells. *Infect. Immun.* 70, 1816–1823
- Leippe, M. and Herbst, R. (2004) Ancient weapons for attack and defense: the pore-forming polypeptides of pathogenic enteric and free-living amoeboid protozoa. *J. Eukaryot. Microbiol.* 51, 516–521
- Bruhn, H. *et al.* (2003) Amoebapores and NK-lysin, members of a class of structurally distinct antimicrobial and cytolytic peptides from protozoa and mammals: a comparative functional analysis. *Biochem. J.* 375, 737–744
- Andra, J. *et al.* (2003) Amoebapores, archaic effector peptides of protozoan origin, are discharged into phagosomes and kill bacteria by permeabilizing their membranes. *Dev. Comp. Immunol.* 27, 291–304
- Hecht, O. *et al.* (2004) Solution structure of the pore-forming protein of *Entamoeba histolytica*. *J. Biol. Chem.* 279, 17834–17841
- Bracha, R. *et al.* (2006) Transcriptional silencing of multiple genes in trophozoites of *Entamoeba histolytica*. *PLoS Pathog.* 2, e48
- Bracha, R. *et al.* (1999) Antisense inhibition of amoebapore expression in *Entamoeba histolytica* causes a decrease in amoebic virulence. *Mol. Microbiol.* 34, 463–472
- Zhang, X. *et al.* (2004) Expression of amoebapores is required for full expression of *Entamoeba histolytica* virulence in amebic liver abscess but is not necessary for the induction of inflammation or tissue damage in amebic colitis. *Infect. Immun.* 72, 678–683
- Bansal, D. *et al.* (2009) An *ex-vivo* human intestinal model to study *Entamoeba histolytica* pathogenesis. *PLoS Negl. Trop. Dis.* 3, e551
- Tillack, M. *et al.* (2007) The *Entamoeba histolytica* genome: primary structure and expression of proteolytic enzymes. *BMC Genomics* 8, 170
- Hellberg, A. *et al.* (2001) Overexpression of cysteine proteinase 2 in *Entamoeba histolytica* or *Entamoeba dispar* increases amoeba-induced monolayer destruction *in vitro* but does not augment amoebic liver abscess formation in gerbils. *Cell. Microbiol.* 3, 13–20
- Mitra, B.N. *et al.* (2007) Rab11B small GTPase regulates secretion of cysteine proteases in the enteric protozoan parasite *Entamoeba histolytica*. *Cell. Microbiol.* 9, 2112–2125

- 41 Tillack, M. *et al.* (2006) Increased expression of the major cysteine proteinases by stable episomal transfection underlines the important role of EhCP5 for the pathogenicity of *Entamoeba histolytica*. *Mol. Biochem. Parasitol.* 149, 58–64
- 42 Keene, W.E. *et al.* (1986) The major neutral proteinase of *Entamoeba histolytica*. *J. Exp. Med.* 163, 536–549
- 43 Lauwaet, T. *et al.* (2000) Do *Entamoeba histolytica* trophozoites signal via enteric microvilli? *Arch. Med. Res.* 31 (Suppl. 4), S124–S125
- 44 Li, E. *et al.* (1995) Interaction of laminin with *Entamoeba histolytica* cysteine proteinases and its effect on amebic pathogenesis. *Infect. Immun.* 63, 4150–4153
- 45 Lidell, M.E. *et al.* (1995) *Entamoeba histolytica* cysteine proteases cleave the MUC2 mucin in its C-terminal domain and dissolve the protective colonic mucus gel. *Proc. Natl. Acad. Sci. U.S.A.* 103, 9298–9303
- 46 Luaces, A.L. and Barrett, A.J. (1988) Affinity purification and biochemical characterization of histolysin, the major cysteine proteinase of *Entamoeba histolytica*. *Biochem. J.* 250, 903–909
- 47 Thibeaux, R. *et al.* (2012) Newly visualized fibrillar collagen scaffolds dictate *Entamoeba histolytica* invasion route in the human colon. *Cell. Microbiol.* 14, 609–621
- 48 Thibeaux, R. *et al.* (2014) The parasite *Entamoeba histolytica* exploits the activities of human matrix metalloproteinases to invade colonic tissue. *Nat. Commun.* 5, 5142
- 49 Ralston, K.S. *et al.* (2014) Trophocytosis by *Entamoeba histolytica* contributes to cell killing and tissue invasion. *Nature* 508, 526–530
- 50 Brown, T. (1979) Observations by immunofluorescence microscopy and electron microscopy on the cytopathogenicity of *Naegleria fowleri* in mouse embryo-cell cultures. *J. Med. Microbiol.* 12, 363–371
- 51 Chi, L. *et al.* (1959) Selective phagocytosis of nucleated erythrocytes by cytotoxic amebae in cell culture. *Science* 130, 1763
- 52 Culbertson, C.G. (1971) The pathogenicity of soil amoebae. *Annu. Rev. Microbiol.* 25, 231–254
- 53 Nizak, C. *et al.* (2007) Exploitation of other social amoebae by *Dictyostelium caveatum*. *PLoS ONE* 2, e212
- 54 Waddell, D.R. and Vogel, G. (1985) Phagocytic behavior of the predatory slime mold, *Dictyostelium caveatum*. Cell nibbling. *Exp. Cell Res.* 159, 323–334
- 55 Joly, E. and Hudrisier, D. (2003) What is trophocytosis and what is its purpose? *Nat. Immunol.* 4, 815
- 56 Batista, F.D. *et al.* (2001) B cells acquire antigen from target cells after synapse formation. *Nature* 411, 489–494
- 57 Huang, J.F. *et al.* (1999) TCR-Mediated internalization of peptide–MHC complexes acquired by T cells. *Science* 286, 952–954
- 58 Hudrisier, D. *et al.* (2001) Cutting edge: CTLs rapidly capture membrane fragments from target cells in a TCR signaling-dependent manner. *J. Immunol.* 166, 3645–4369
- 59 Hudson, L. *et al.* (1974) B cell-derived immunoglobulin on activated mouse T lymphocytes. *Nature* 251, 60–62
- 60 Davis, D.M. *et al.* (2007) Intercellular transfer of cell-surface proteins is common and can affect many stages of an immune response. *Nat. Rev. Immunol.* 7, 238–243
- 61 Martinez-Martin, N. *et al.* (2011) T cell receptor internalization from the immunological synapse is mediated by TC21 and RhoG GTPase-dependent phagocytosis. *Immunity* 35, 208–222
- 62 Aucher, A. *et al.* (2008) Capture of plasma membrane fragments from target cells by trophocytosis requires signaling in T cells but not in B cells. *Blood* 111, 5621–5628
- 63 Lejeune, A. and Gicquaud, C. (1987) Evidence for two mechanisms of human erythrocyte endocytosis by *Entamoeba histolytica*-like amoebae (Laredo strain). *Biol. Cell* 59, 239–245
- 64 Nakada-Tsukui, K. *et al.* (2009) Phosphatidylinositol-phosphates mediate cytoskeletal reorganization during phagocytosis via a unique modular protein consisting of RhoGEF/DH and FYVE domains in the parasitic protozoan *Entamoeba histolytica*. *Cell Microbiol.* 11, 1471–1491
- 65 Lejeune, A. and Gicquaud, C. (1992) Target cell deformability determines the type of phagocytic mechanism used by *Entamoeba histolytica*-like, Laredo strain. *Biol. Cell* 74, 211–216
- 66 Ghosh, S.K. and Samuelson, J. (1997) Involvement of p21racA, phosphoinositide 3-kinase, and vacuolar ATPase in phagocytosis of bacteria and erythrocytes by *Entamoeba histolytica*: suggestive evidence for coincidental evolution of amebic invasiveness. *Infect. Immun.* 65, 4243–4249
- 67 Somlata, S. *et al.* (2011) A C2 domain protein kinase initiates phagocytosis in the protozoan parasite *Entamoeba histolytica*. *Nat. Commun.* 2, 230
- 68 Sateriale, A. *et al.* (2012) Feed-forward regulation of phagocytosis by *Entamoeba histolytica*. *Infect. Immun.* 80, 4456–4462
- 69 Boettner, D.R. *et al.* (2005) *Entamoeba histolytica* and *Entamoeba dispar* utilize externalized phosphatidylserine for recognition and phagocytosis of erythrocytes. *Infect. Immun.* 73, 3422–3430
- 70 Baxt, L.A. *et al.* (2008) An *Entamoeba histolytica* rhomboid protease with atypical specificity cleaves a surface lectin involved in phagocytosis and immune evasion. *Genes Dev.* 22, 1636–1646
- 71 Baxt, L.A. *et al.* (2010) Downregulation of an *Entamoeba histolytica* rhomboid protease reveals roles in regulating parasite adhesion and phagocytosis. *Eukaryot. Cell* 9, 1283–1293
- 72 Rastew, E. *et al.* (2015) *Entamoeba histolytica* rhomboid protease 1 has a role in migration and motility as validated by two independent genetic approaches. *Exp. Parasitol.* 154, 33–42
- 73 Teixeira, J.E. *et al.* (2012) Control of *Entamoeba histolytica* adherence involves metalloproteinase 1, an M8 family surface metalloproteinase with homology to leishmanolysin. *Infect. Immun.* 80, 2165–2176
- 74 Teixeira, J.E. and Huston, C.D. (2008) Participation of the serine-rich *Entamoeba histolytica* protein in amebic phagocytosis of apoptotic host cells. *Infect. Immun.* 76, 959–966
- 75 Teixeira, J.E. *et al.* (2008) C1q- and collectin-dependent phagocytosis of apoptotic host cells by the intestinal protozoan *Entamoeba histolytica*. *J. Infect. Dis.* 198, 1062–1070
- 76 Vaithilingam, A. *et al.* (2012) *Entamoeba histolytica* cell surface calreticulin binds human C1q and functions in amebic phagocytosis of host cells. *Infect. Immun.* 80, 2008–2018
- 77 Buss, S.N. *et al.* (2010) Members of the *Entamoeba histolytica* transmembrane kinase family play non-redundant roles in growth and phagocytosis. *Int. J. Parasitol.* 40, 833–843
- 78 Shrial, S. *et al.* (2010) Serum-dependent selective expression of EhTMKB1-9, a member of *Entamoeba histolytica* B1 family of transmembrane kinases. *PLoS Pathog.* 6, e1000929
- 79 Boettner, D.R. *et al.* (2008) *Entamoeba histolytica* phagocytosis of human erythrocytes involves PATMK, a member of the transmembrane kinase family. *PLoS Pathog.* 4, e8
- 80 Beck, D.L. *et al.* (2005) Identification and gene expression analysis of a large family of transmembrane kinases related to the Gal/GalNAc lectin in *Entamoeba histolytica*. *Eukaryot. Cell* 4, 722–732
- 81 Loftus, B. *et al.* (2005) The genome of the protist parasite *Entamoeba histolytica*. *Nature* 433, 865–868
- 82 MacFarlane, R.C. and Singh, U. (2007) Identification of an *Entamoeba histolytica* serine-, threonine-, and isoleucine-rich protein with roles in adhesion and cytotoxicity. *Eukaryot. Cell* 6, 2139–2146
- 83 Garcia-Rivera, G. *et al.* (1999) *Entamoeba histolytica*: a novel cysteine protease and an adhesin form the 112 kDa surface protein. *Mol. Microbiol.* 33, 556–568
- 84 Seigneur, M. *et al.* (2005) A lysine- and glutamic acid-rich protein, KERP1, from *Entamoeba histolytica* binds to human enterocytes. *Cell. Microbiol.* 7, 569–579
- 85 Perdomo, D. *et al.* (2013) The alpha-helical regions of KERP1 are important in *Entamoeba histolytica* adherence to human cells. *Sci. Rep.* 3, 1171
- 86 Biller, L. *et al.* (2014) The cell surface proteome of *Entamoeba histolytica*. *Mol. Cell. Proteomics* 13, 132–144
- 87 Voigt, H. *et al.* (1999) Myosin IB from *Entamoeba histolytica* is involved in phagocytosis of human erythrocytes. *J. Cell Sci.* 112, 1191–1201
- 88 Bhattacharya, A. *et al.* (2006) Calcium-binding proteins of *Entamoeba histolytica*. *Arch. Med. Res.* 37, 221–225
- 89 Jain, R. *et al.* (2008) Calcium-binding protein 1 of *Entamoeba histolytica* transiently associates with phagocytic cups in a calcium-independent manner. *Cell. Microbiol.* 10, 1373–1389
- 90 Sahoo, N. *et al.* (2004) Calcium binding protein 1 of the protozoan parasite *Entamoeba histolytica* interacts with actin and is involved in cytoskeleton dynamics. *J. Cell Sci.* 117, 3625–3634

- 91 Mansuri, M.S. *et al.* (2014) A novel alpha kinase EhAK1 phosphorylates actin and regulates phagocytosis in *Entamoeba histolytica*. *PLoS Pathog.* 10, e1004411
- 92 Aslam, S. *et al.* (2012) The calmodulin-like calcium binding protein EhCaBP3 of *Entamoeba histolytica* regulates phagocytosis and is involved in actin dynamics. *PLoS Pathog.* 8, e1003055
- 93 Kumar, S. *et al.* (2014) Crystal structure of calcium binding protein-5 from *Entamoeba histolytica* and its involvement in initiation of phagocytosis of human erythrocytes. *PLoS Pathog.* 10, e1004532
- 94 Powell, R.R. *et al.* (2006) *Entamoeba histolytica*: FYVE-finger domains, phosphatidylinositol 3-phosphate biosensors, associate with phagosomes but not fluid filled endosomes. *Exp. Parasitol.* 112, 221–231
- 95 Saito-Nakano, Y. *et al.* (2005) The diversity of Rab GTPases in *Entamoeba histolytica*. *Exp. Parasitol.* 110, 244–252
- 96 Marion, S. *et al.* (2005) Signalization and cytoskeleton activity through myosin IB during the early steps of phagocytosis in *Entamoeba histolytica*: a proteomic approach. *Cell. Microbiol.* 7, 1504–1518
- 97 Okada, M. *et al.* (2005) Proteomic analysis of phagocytosis in the enteric protozoan parasite *Entamoeba histolytica*. *Eukaryot. Cell* 4, 827–831
- 98 Okada, M. *et al.* (2006) Kinetics and strain variation of phagosome proteins of *Entamoeba histolytica* by proteomic analysis. *Mol. Biochem. Parasitol.* 145, 171–183
- 99 Rodriguez, M.A. *et al.* (2000) An *Entamoeba histolytica* rab-like encoding gene and protein: function and cellular location. *Mol. Biochem. Parasitol.* 108, 199–206
- 100 Hernandez-Alejandro, M. *et al.* (2013) The small GTPase EhRabB of *Entamoeba histolytica* is differentially expressed during phagocytosis. *Parasitol. Res.* 112, 1631–1640
- 101 Guzman-Medrano, R. *et al.* (2005) *Entamoeba histolytica*: alterations in EhRabB protein in a phagocytosis deficient mutant correlate with the *Entamoeba dispar* RabB sequence. *Exp. Parasitol.* 110, 259–264
- 102 Picazarri, K. *et al.* (2005) *Entamoeba histolytica*: identification of EhGPCR-1, a novel putative G protein-coupled receptor that binds to EhRabB. *Exp. Parasitol.* 110, 253–258
- 103 Saito-Nakano, Y. *et al.* (2004) Rab5-associated vacuoles play a unique role in phagocytosis of the enteric protozoan parasite *Entamoeba histolytica*. *J. Biol. Chem.* 279, 49497–49507
- 104 Saito-Nakano, Y. *et al.* (2007) Two Rab7 isotypes, EhRab7A and EhRab7B, play distinct roles in biogenesis of lysosomes and phagosomes in the enteric protozoan parasite *Entamoeba histolytica*. *Cell. Microbiol.* 9, 1796–1808
- 105 Welter, B.H. *et al.* (2002) Characterization of a Rab7-like GTPase, EhRab7: a marker for the early stages of endocytosis in *Entamoeba histolytica*. *Mol. Biochem. Parasitol.* 121, 254–264
- 106 Juarez, P. *et al.* (2001) Characterization of the Ehrab8 gene, a marker of the late stages of the secretory pathway of *Entamoeba histolytica*. *Mol. Biochem. Parasitol.* 116, 223–228
- 107 Welter, B.H. and Temesvari, L.A. (2009) Overexpression of a mutant form of EhRabA, a unique Rab GTPase of *Entamoeba histolytica*, alters endoplasmic reticulum morphology and localization of the Gal/GalNAc adherence lectin. *Eukaryot. Cell* 8, 1014–1026
- 108 Petropolis, D.B. *et al.* (2014) A new human 3D-liver model unravels the role of galectins in liver infection by the parasite *Entamoeba histolytica*. *PLoS Pathog.* 10, e1004381