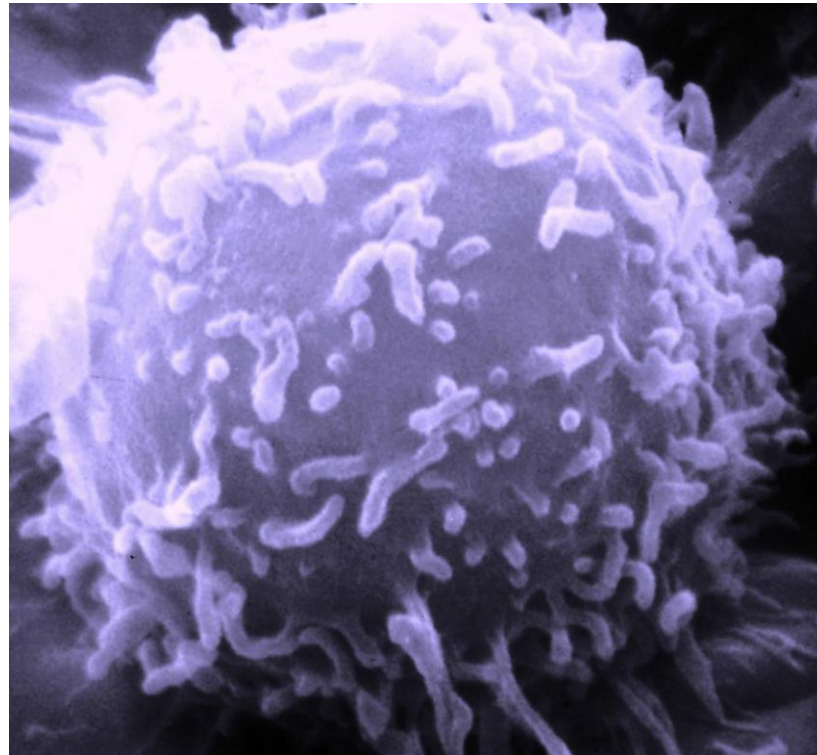


Sistema Linfático



Francisco Javier Hernandez Blazquez

Sistema Linfático

Aplicações em MV

Patologia

Imunologia

Oncologia

Diagnóstico

Inspeção de carnes

Sistema Linfático

Sistema hematolinfático – unidade funcional

Sistema secundário de defesa

Funções

Fagocitose

Filtração da linfa e do sangue

Produção de células de defesa

Produção de imunoglobulinas

Transporte de materiais pelos vasos linfáticos

Estruturas Linfáticas

1- Sistema de capilares e vasos linfáticos

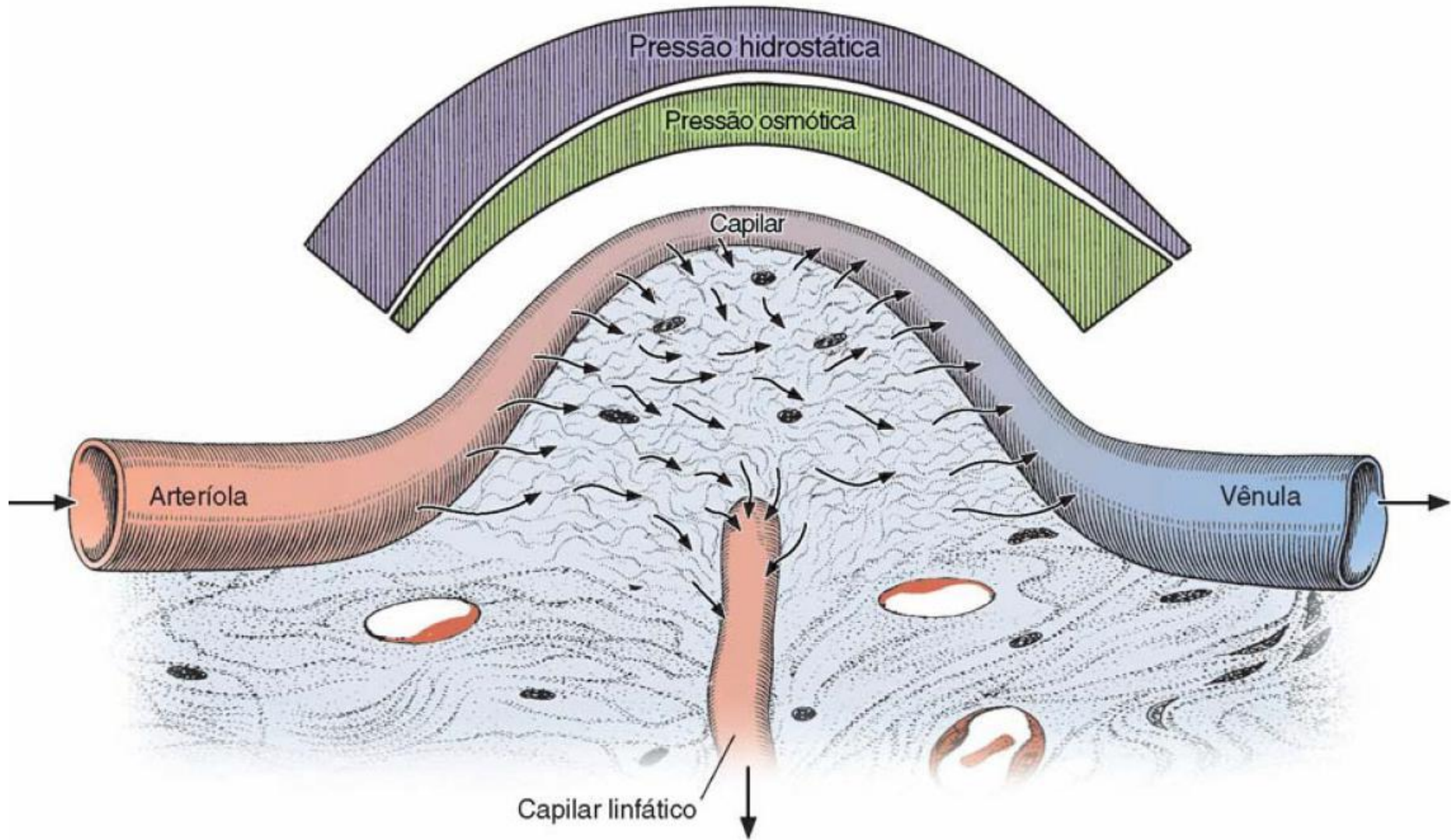
2 -Tecido linfóide que forma agregados

- Difuso

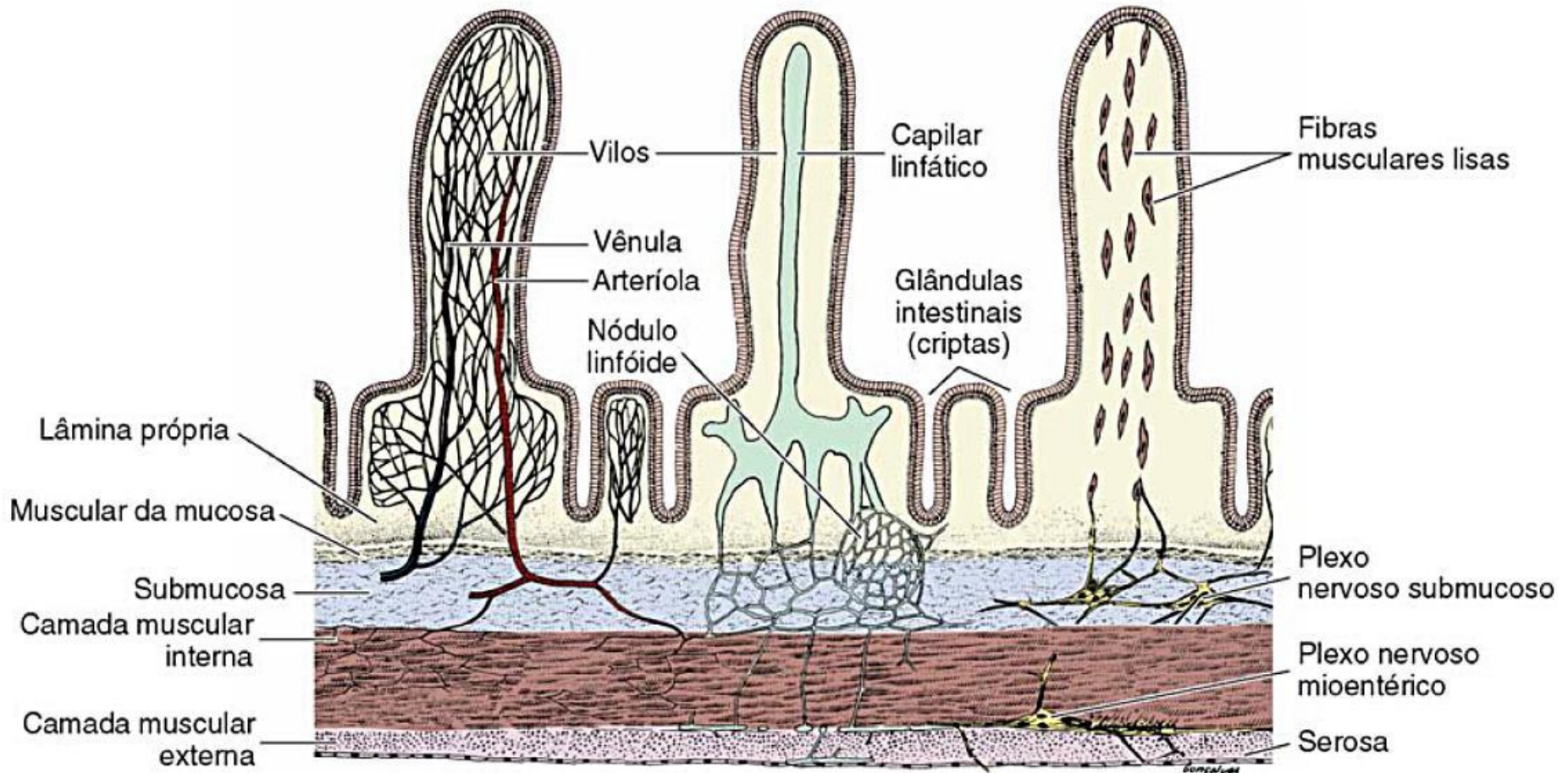
- Denso

- Denso encapsulado

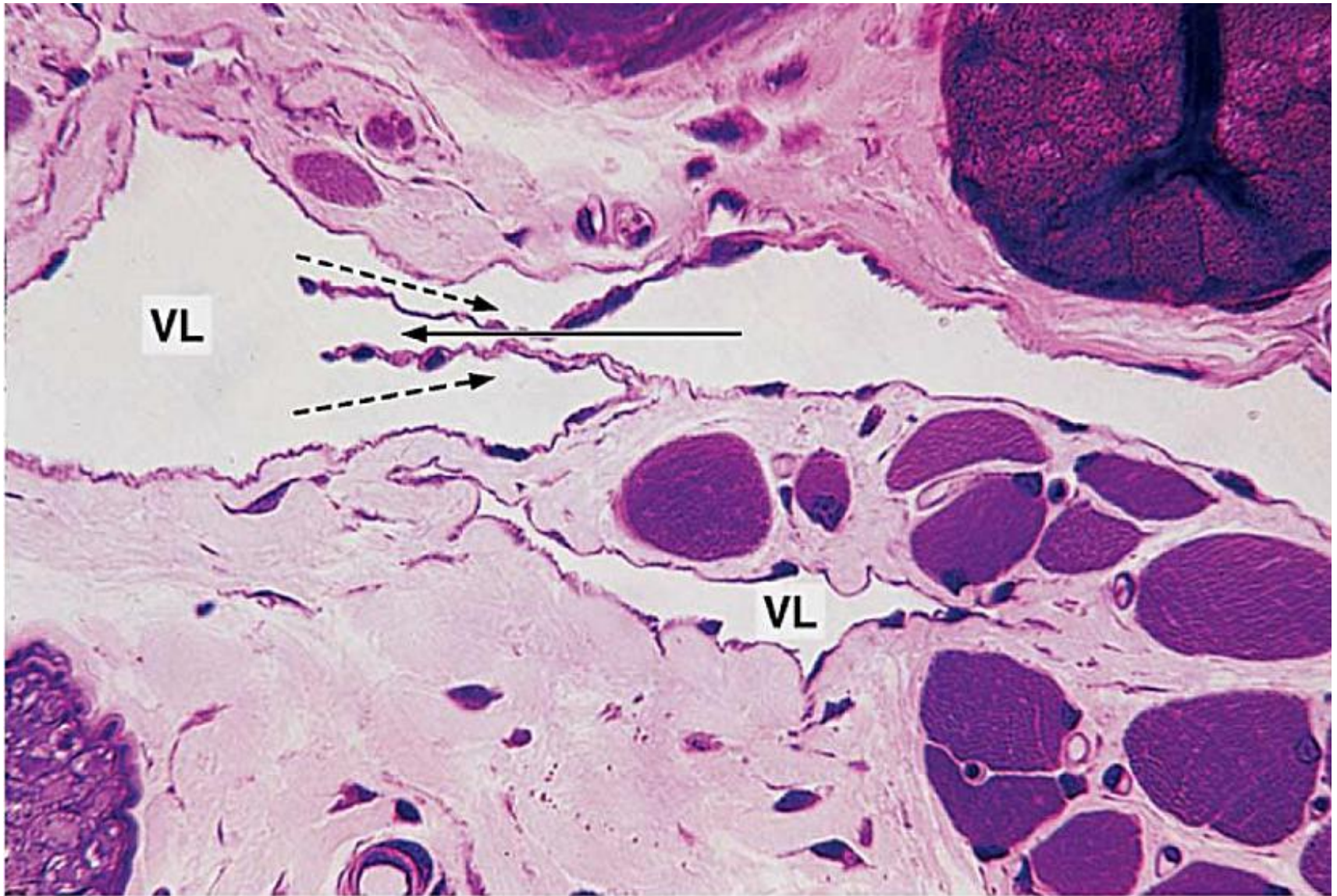
Estruturas Linfáticas



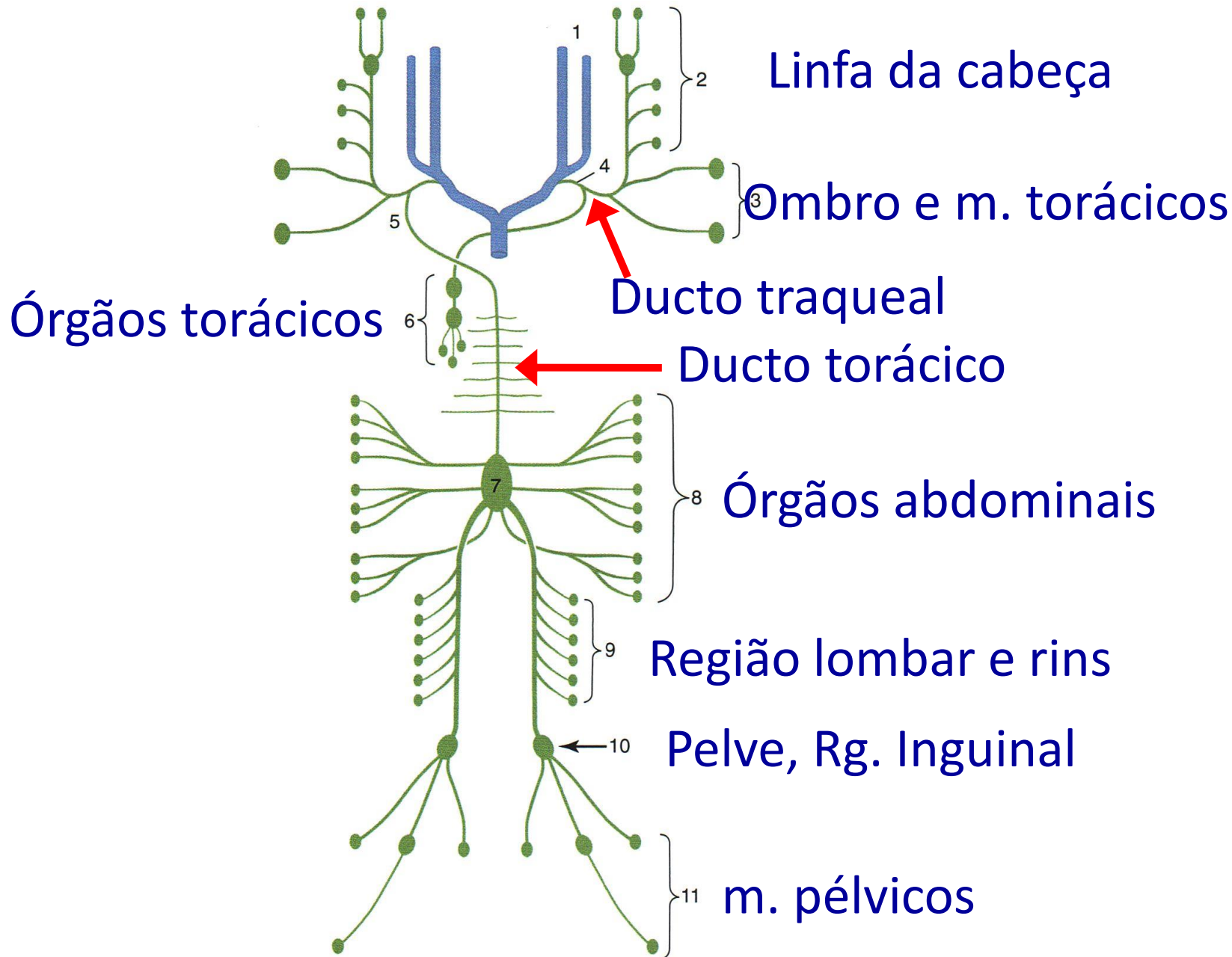
Estruturas Linfáticas



Estruturas Linfáticas

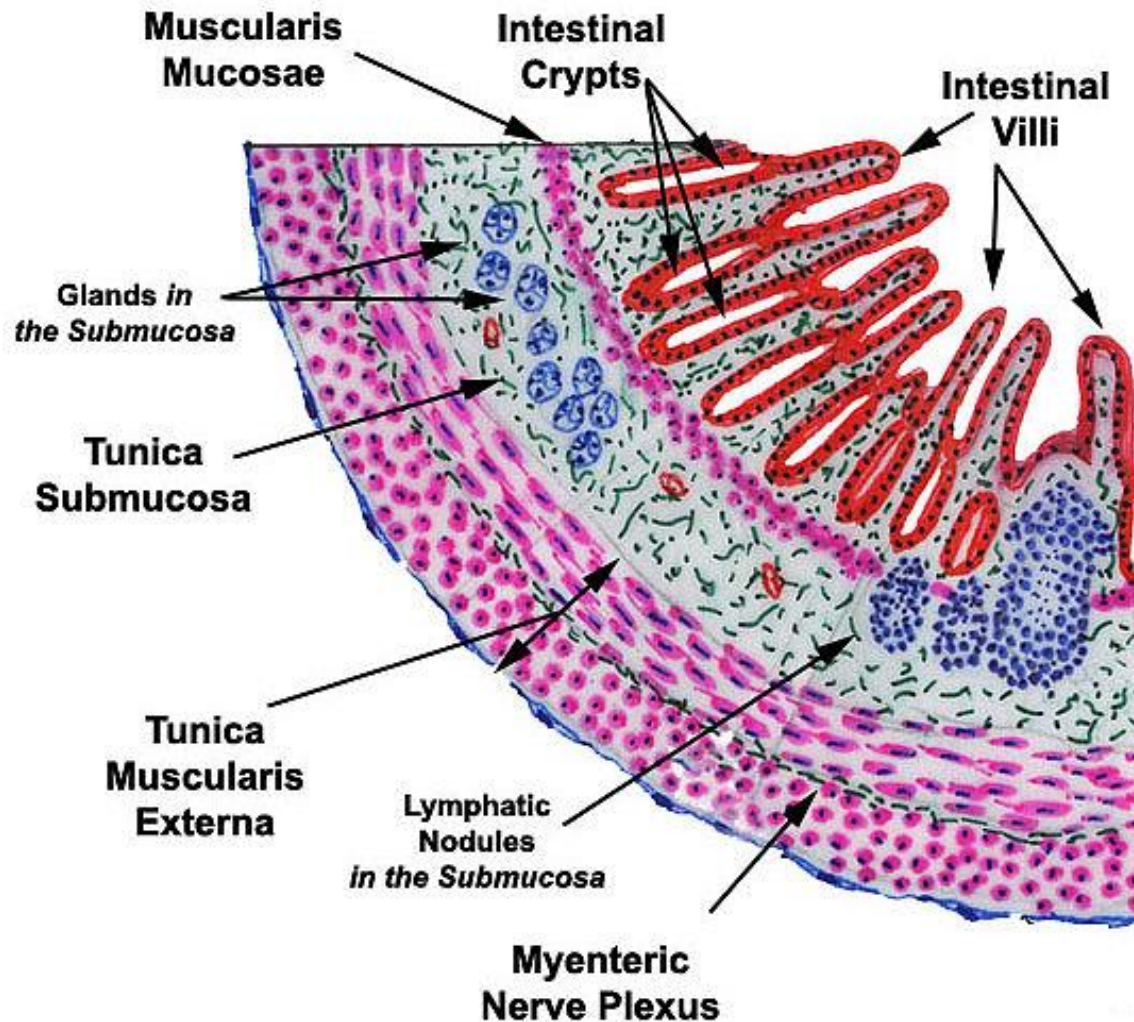


Estruturas e Circulação Linfáticas



Nódulos Linfáticos Isolados

GALT (gut associated lymphatic tissue)

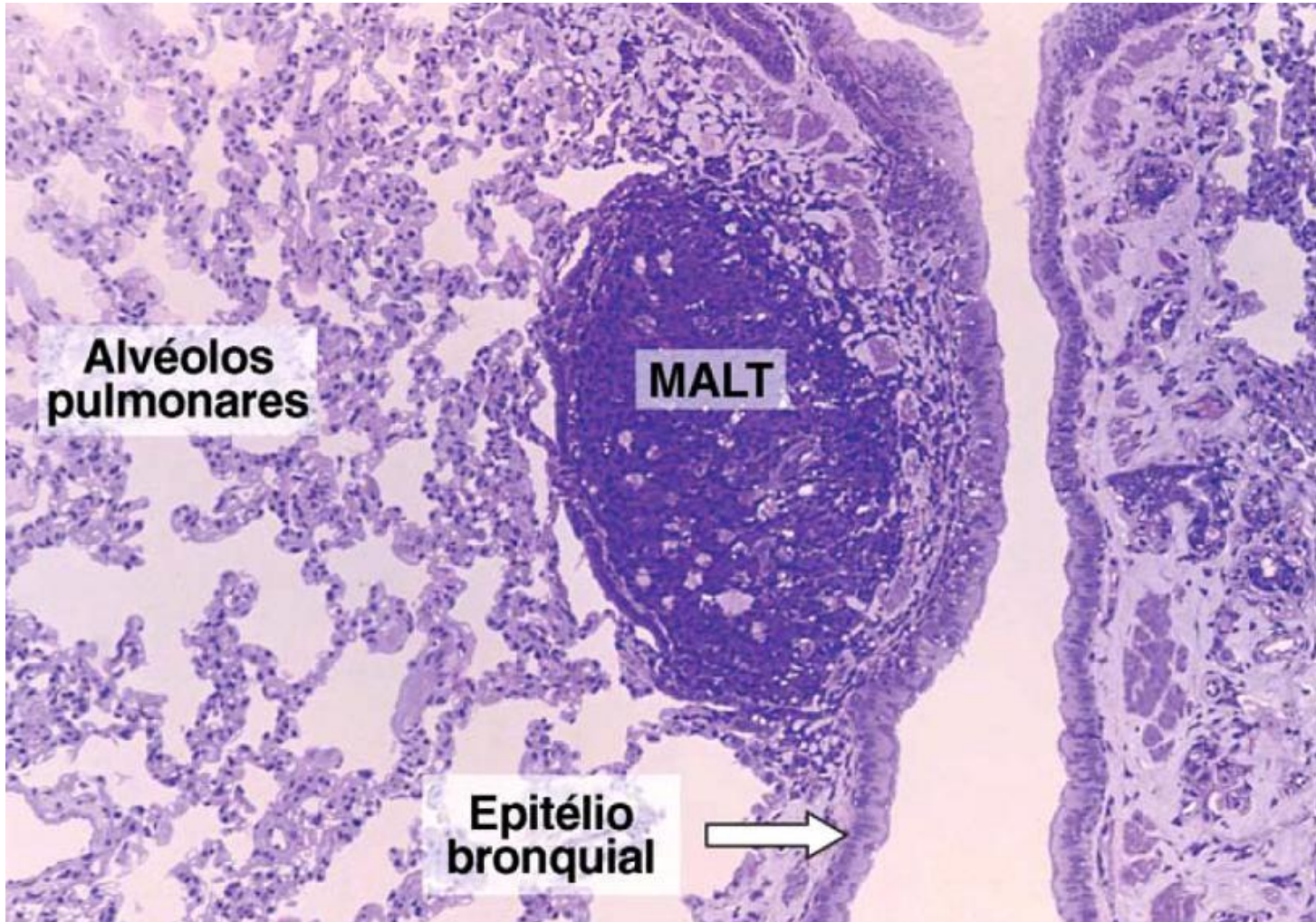


Nódulos Linfáticos Isolados

MALT (mucosa associated lymphatic tissue)

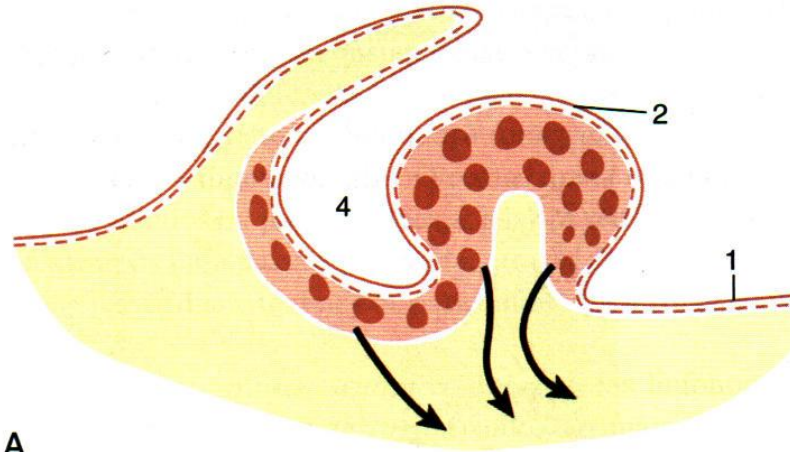
GALT (gut associated lymphatic tissue)

BALT (bronchial associated Lymphatic tissue)

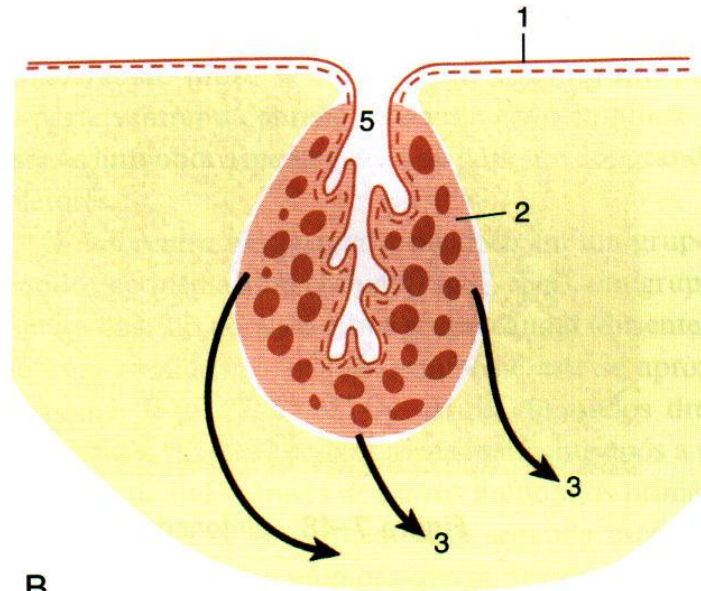


Nódulos Linfáticos Agregados

Tonsilas Faríngeas (palatinas, faríngeas, linguais, tubária)



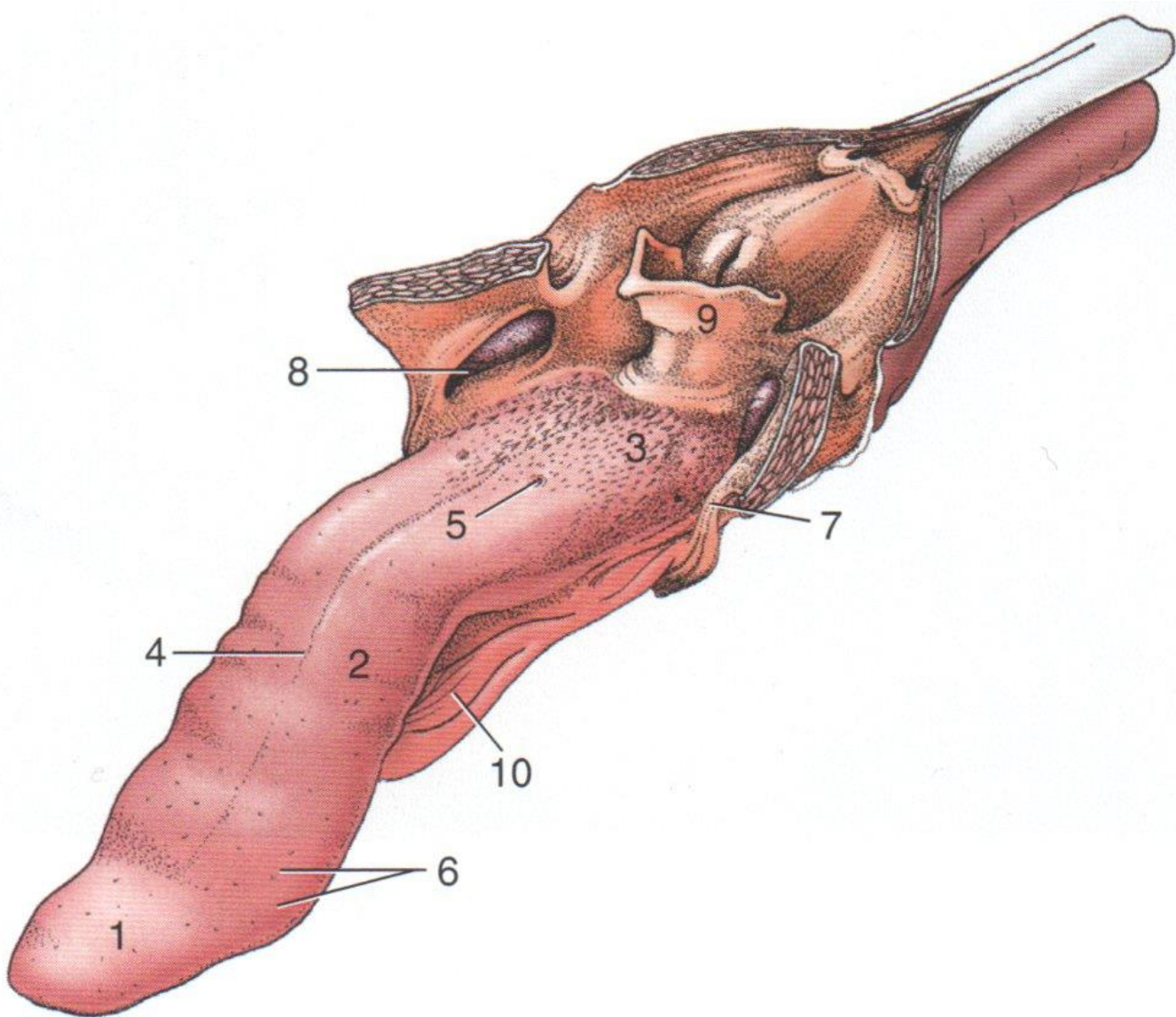
A



B

Nódulos Linfáticos Agregados

Tonsilas Palatinas (palatinas, faríngeas, linguais, tubária)



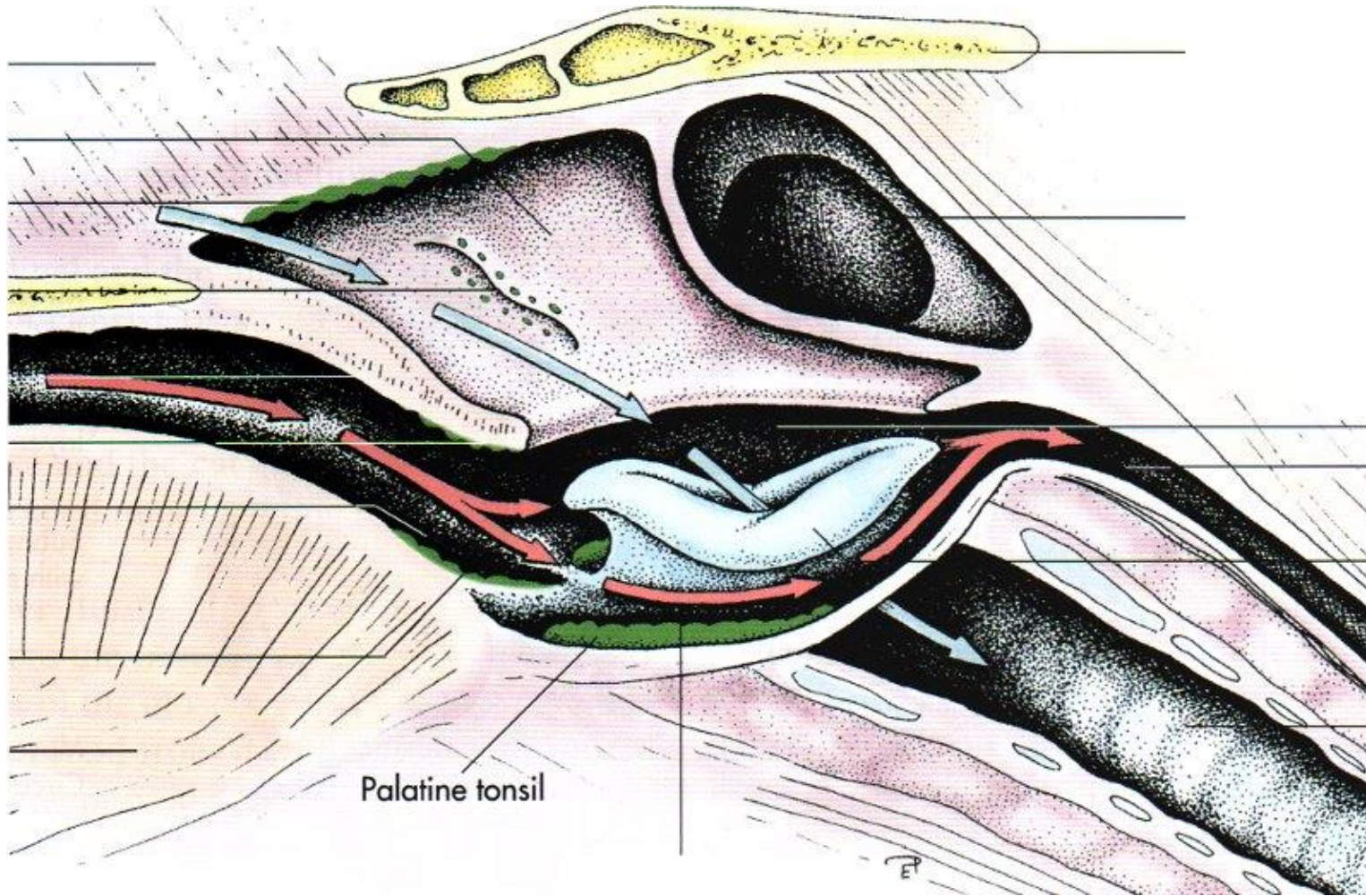
Nódulos Linfáticos Agregados

Tonsilas Palatinas (palatinas, faríngeas, linguais, tubária)



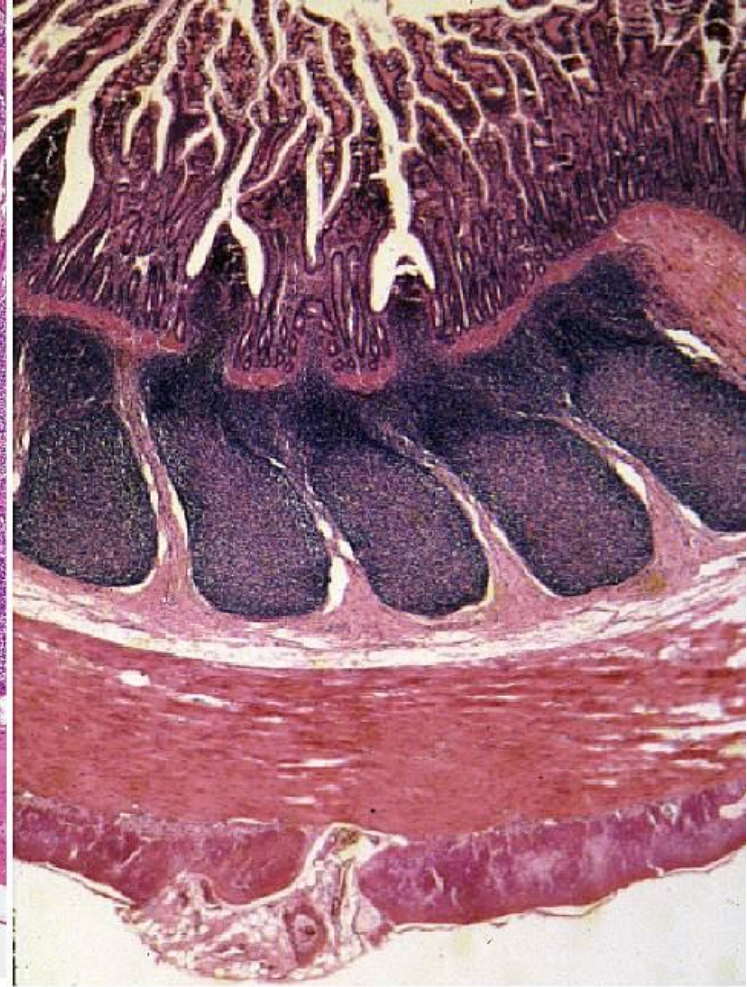
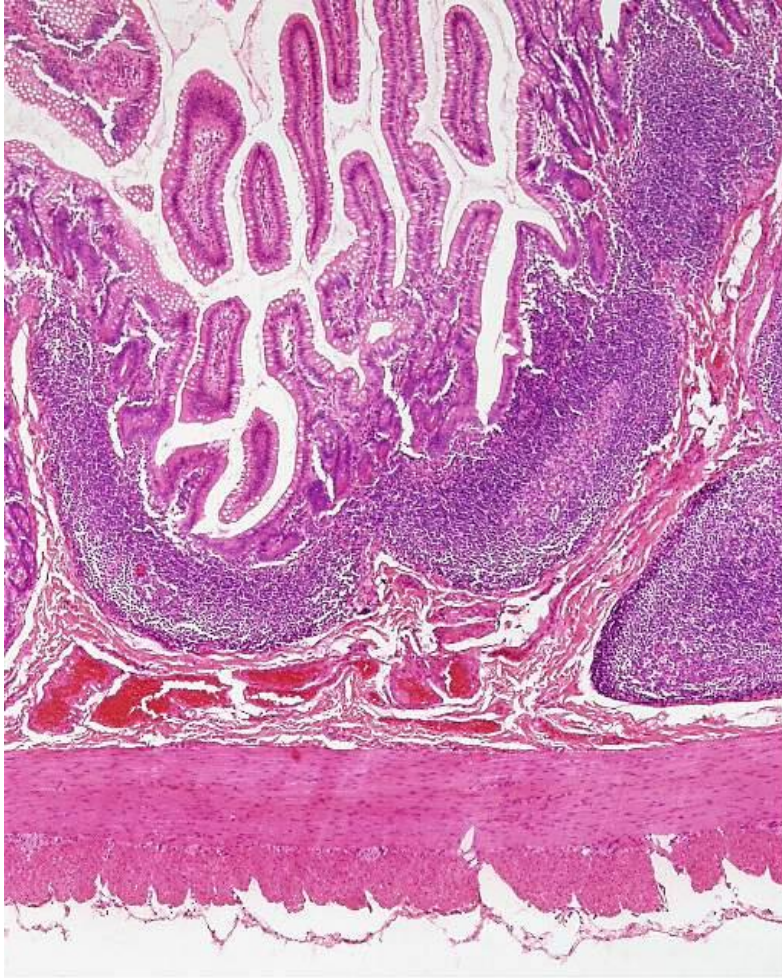
Nódulos Linfáticos Agregados

Tonsilas Tubárias (palatinas, faríngeas, linguais, tubária)



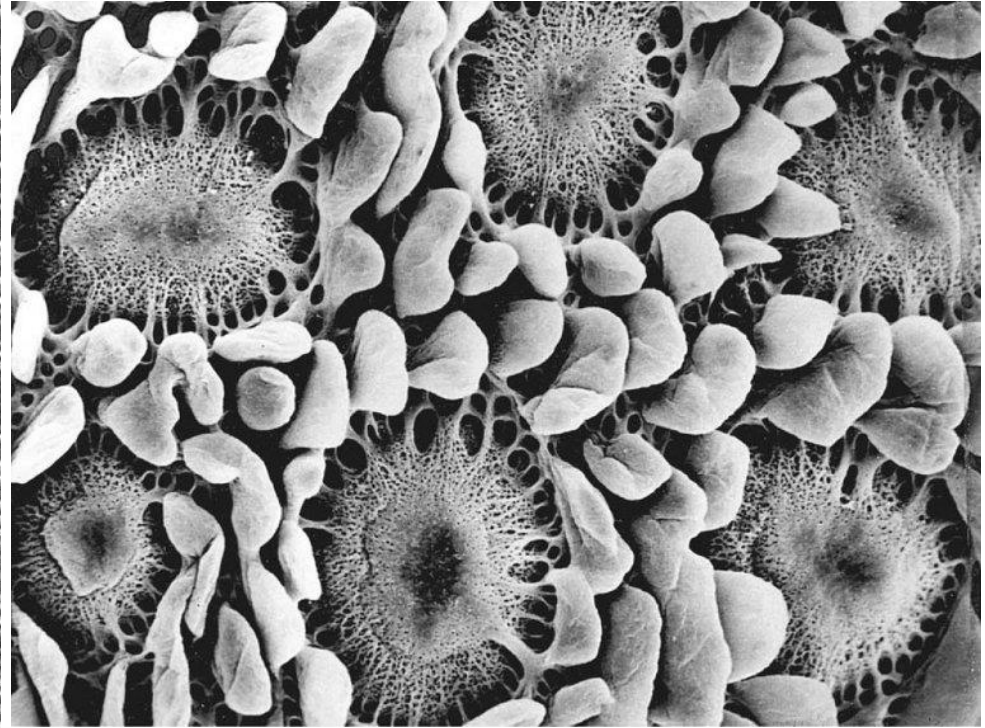
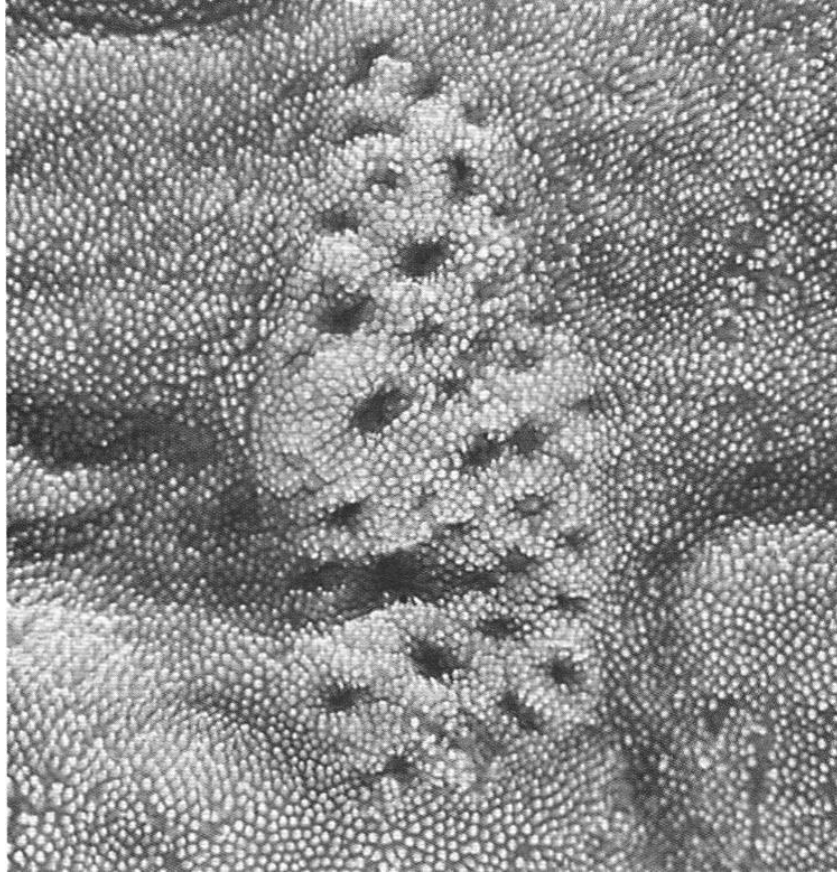
Nódulos Linfáticos Agregados

Nódulos linfáticos agregados do íleo (placas de Peyer)



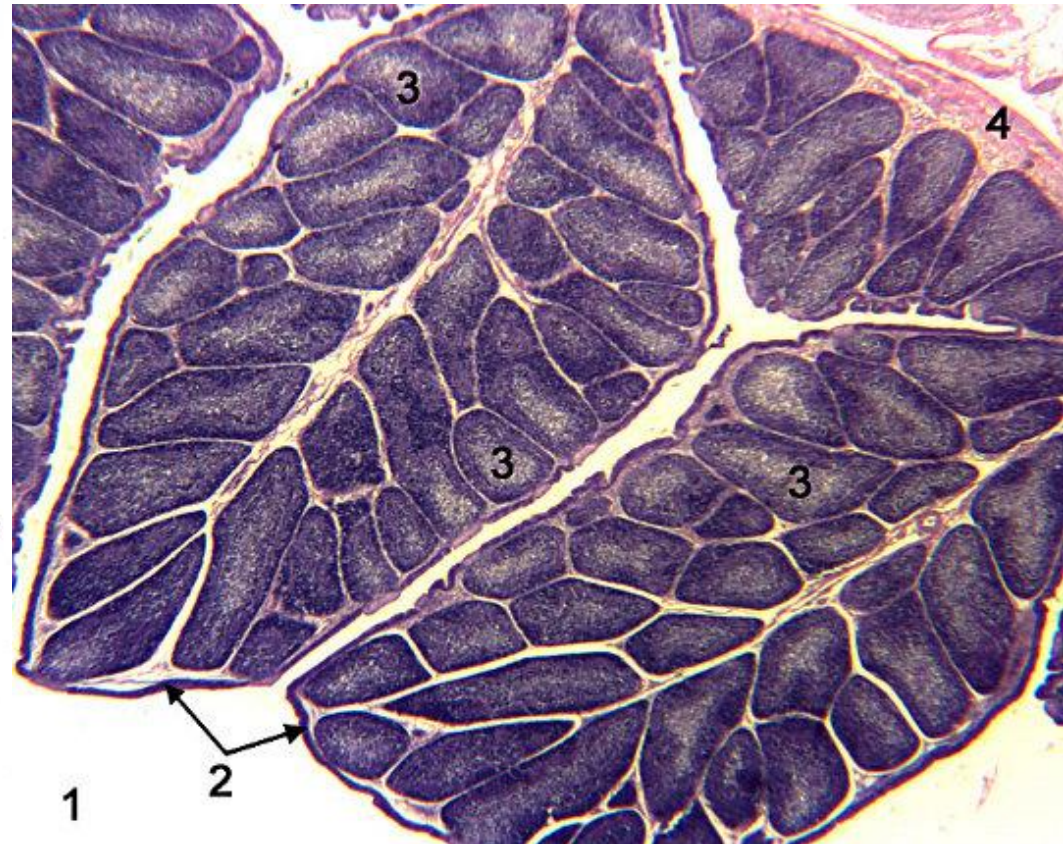
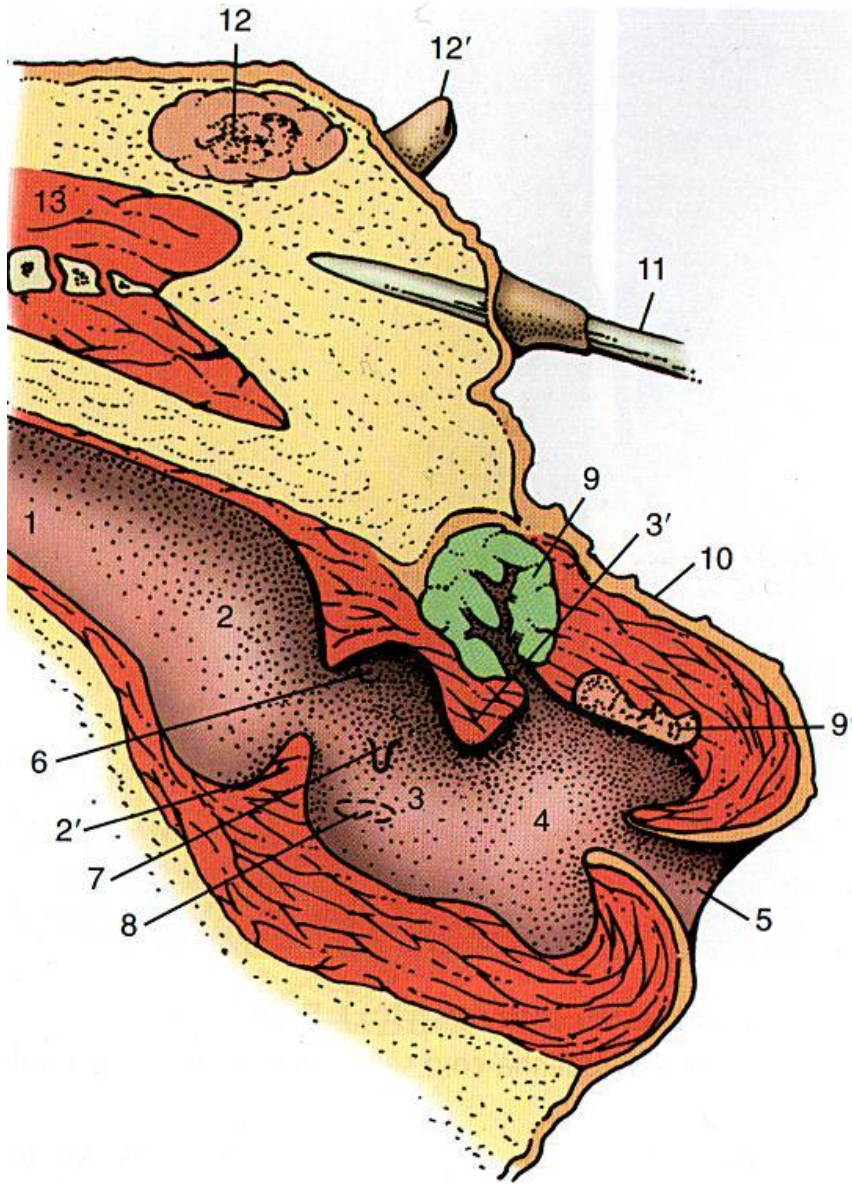
Nódulos Linfáticos Agregados

Nódulos linfáticos agregados do íleo (placas de Peyer)

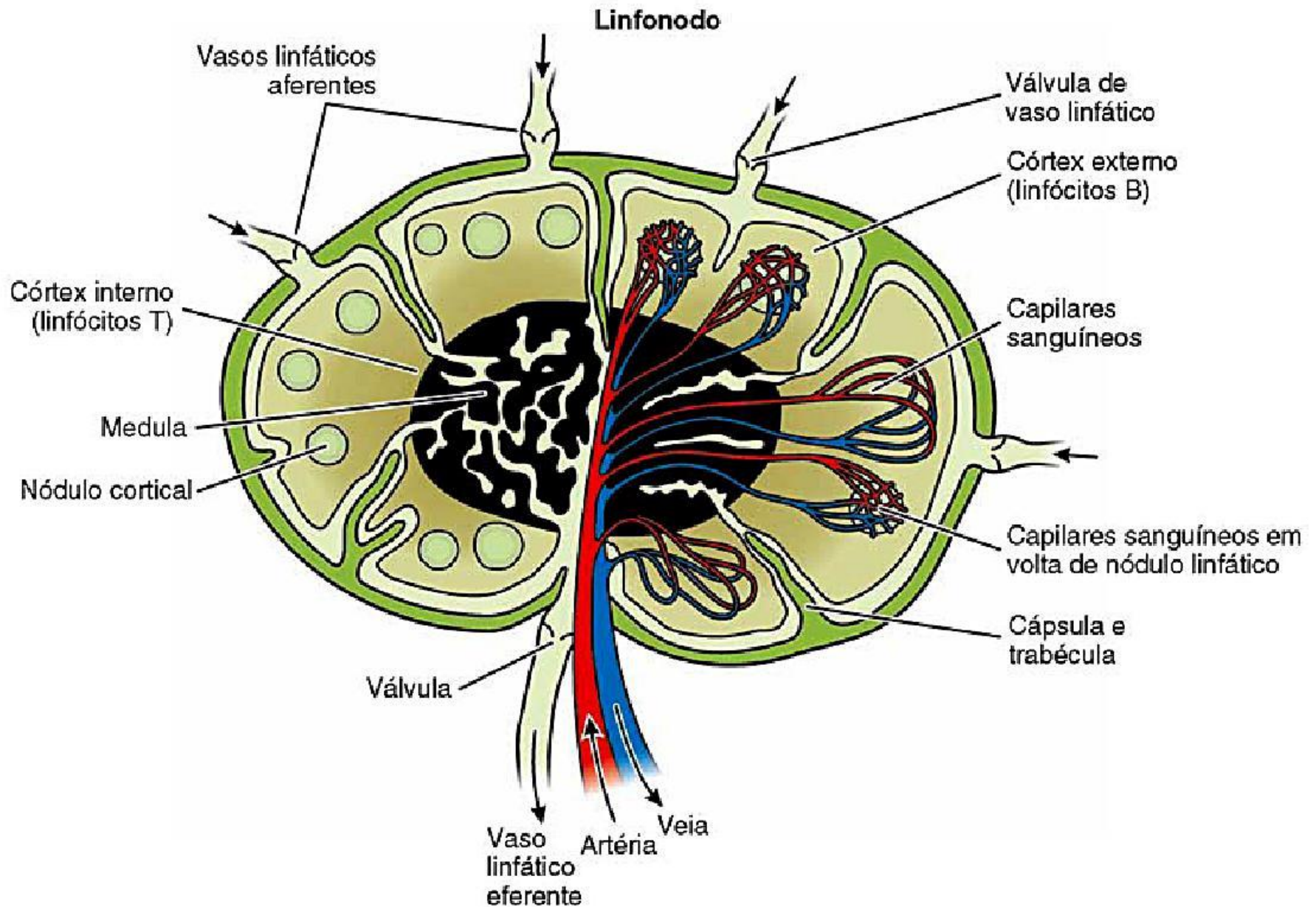


Nódulos Linfáticos Agregados

Bolsa Cloacal das Aves (Bursa de Fabrícus)

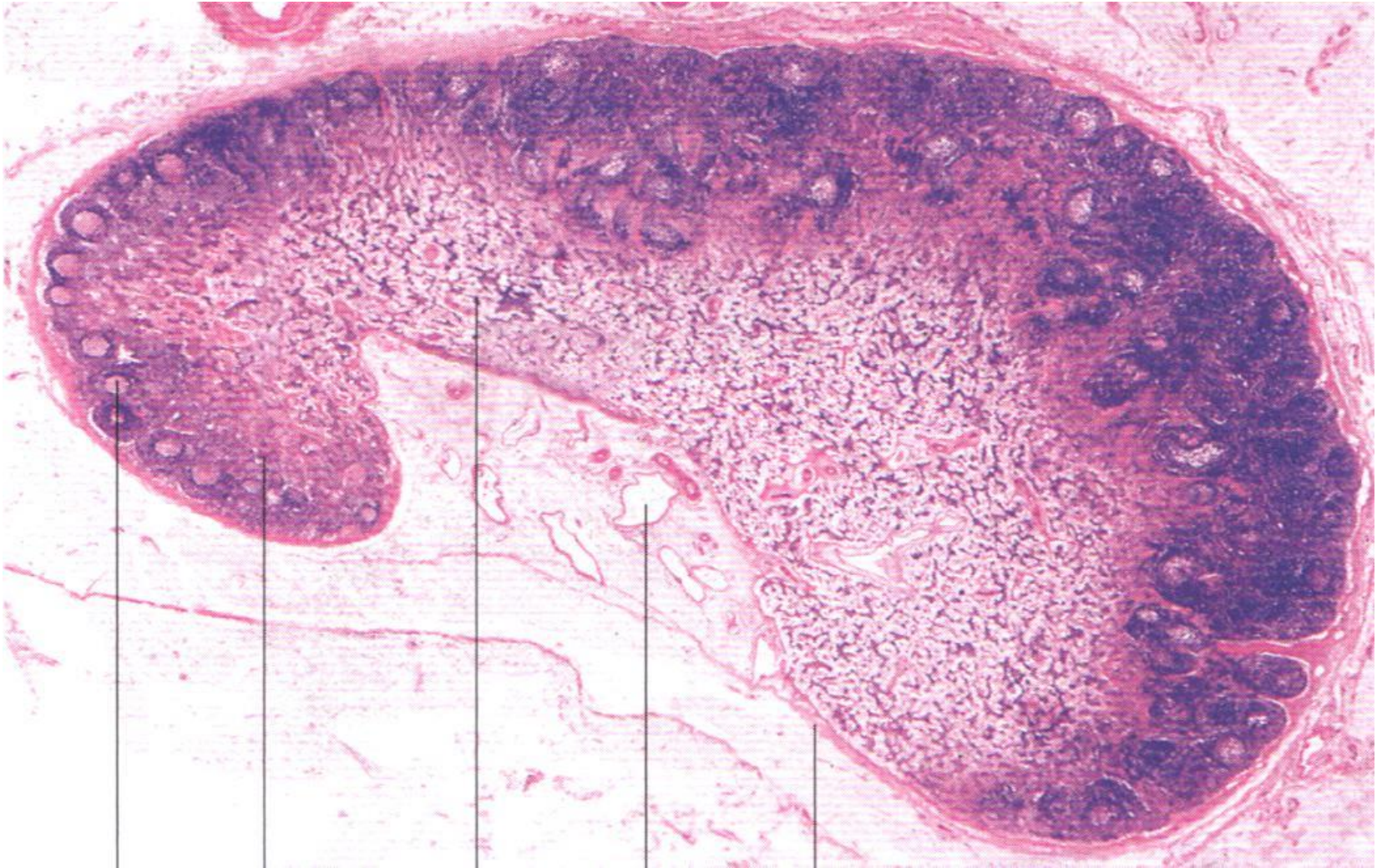


Linfonodos (Tec. Linf. Encapsulado)



Linfonodos

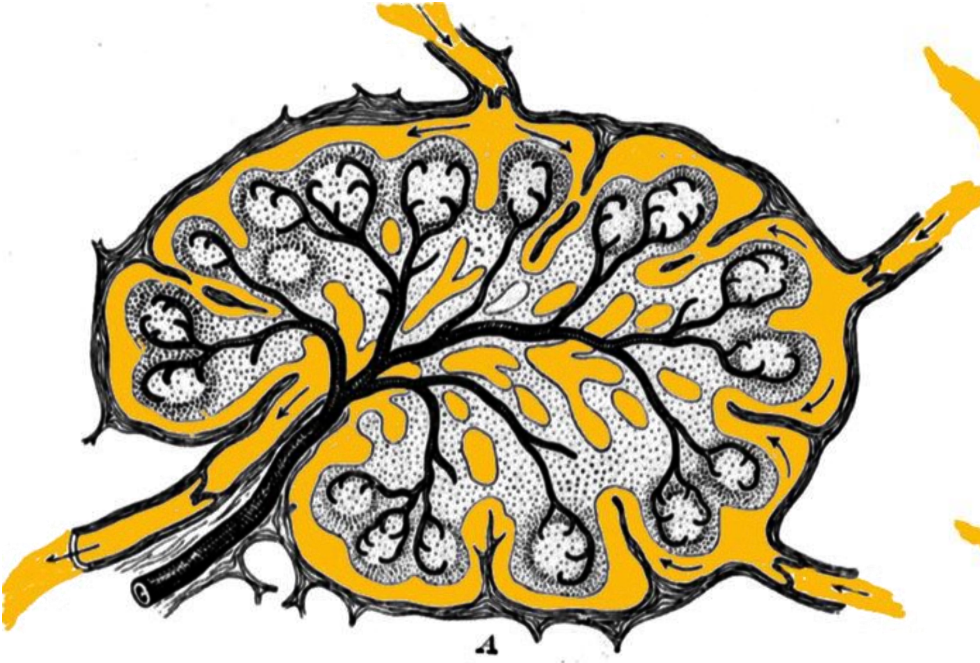
Folículos linfóides



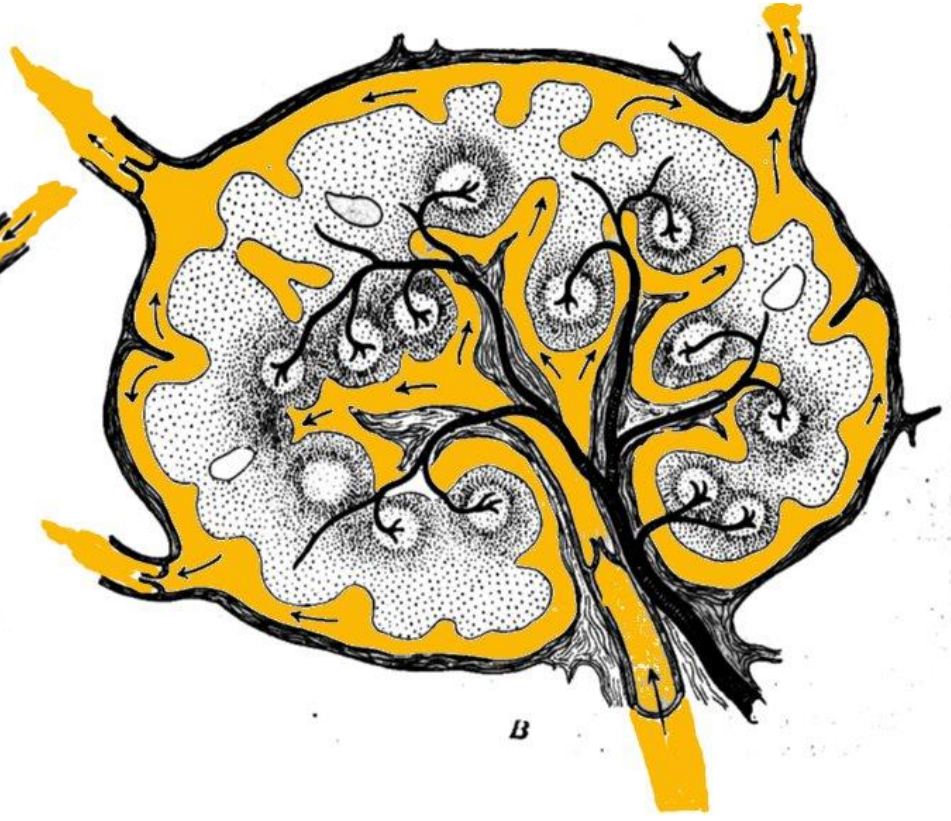
Linfonodos

Cão

Suíno



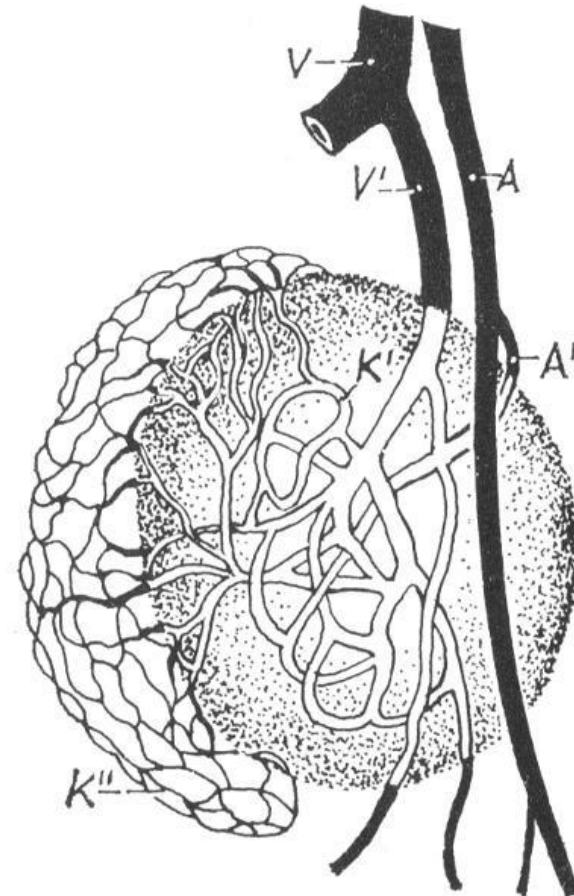
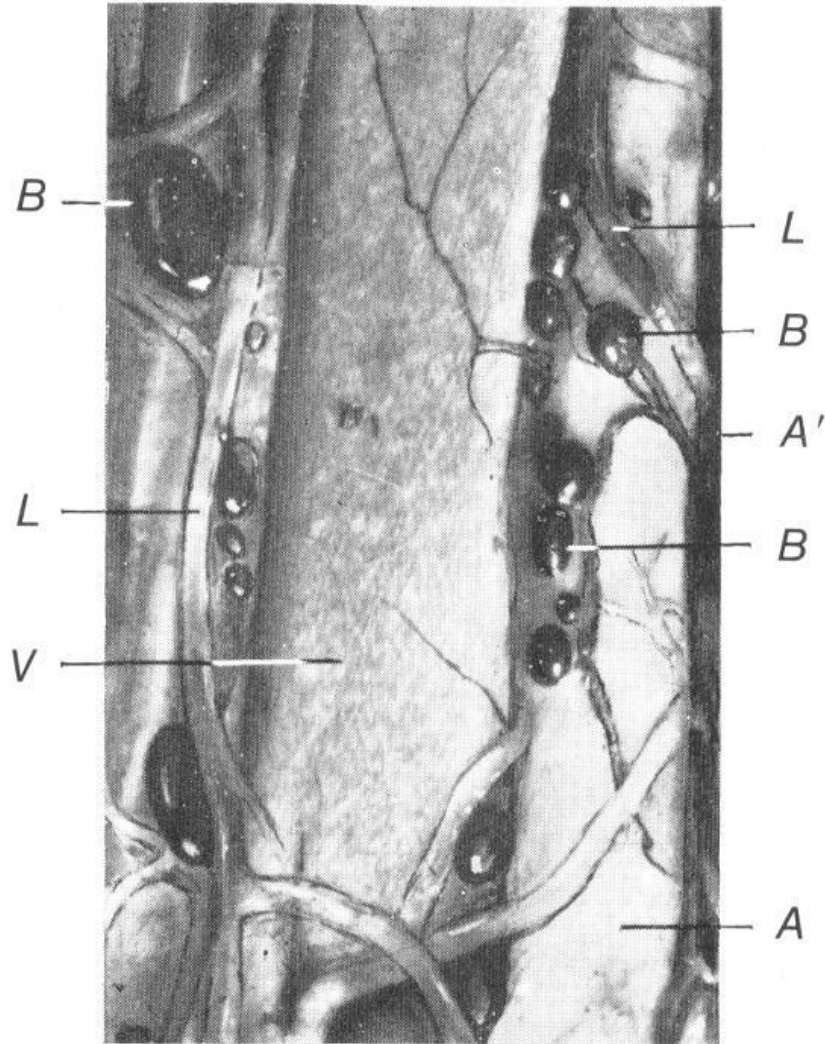
A



B

Linfonodos

Linfonodos hemais e hemolinfonodos

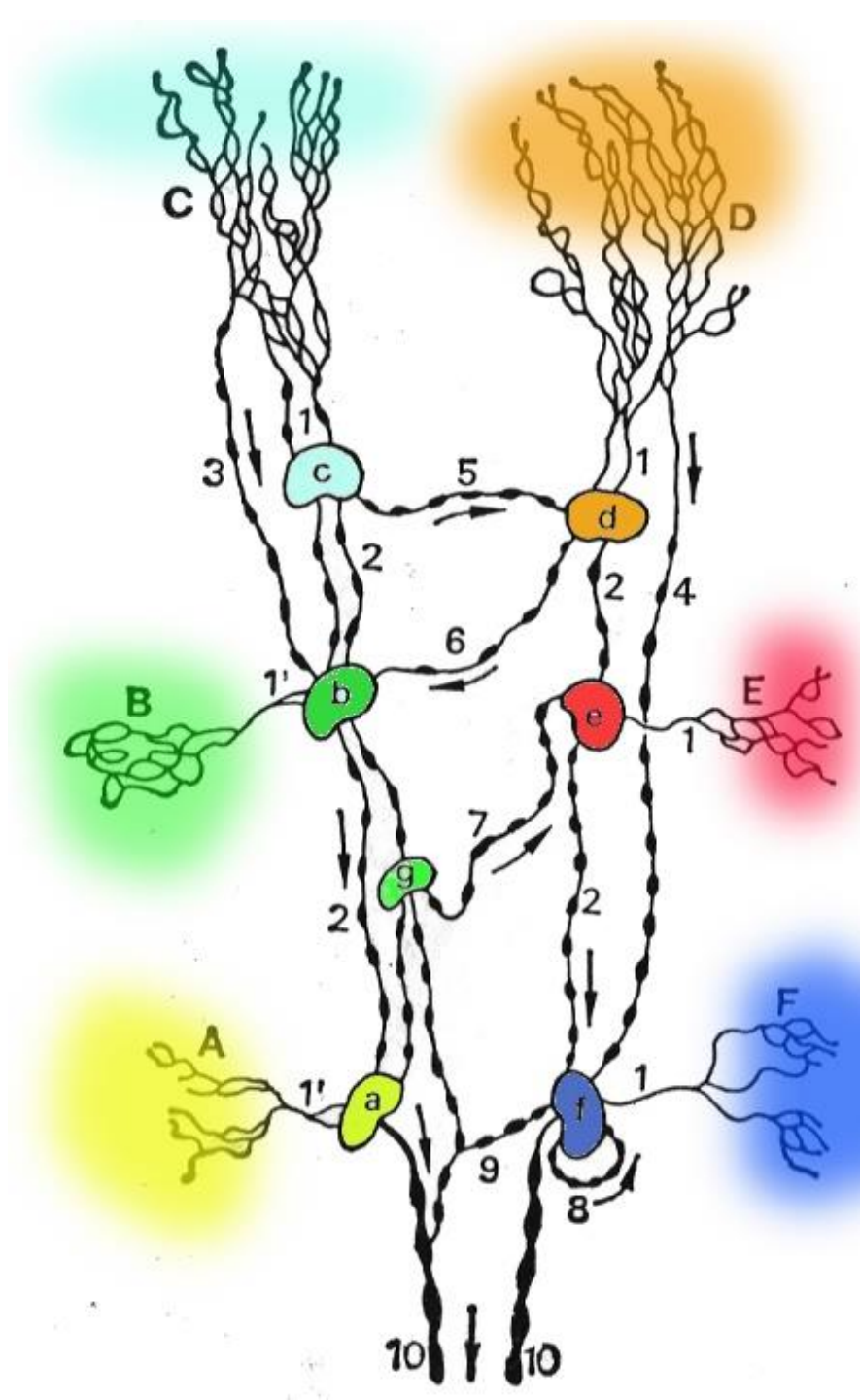


Topografia: linfonodos e vasos linfático

Linfonodos regionais
Área de drenagem

Linha Primária

Linha Secundária



Linfonodos

Nomenclatura: baseada na localização

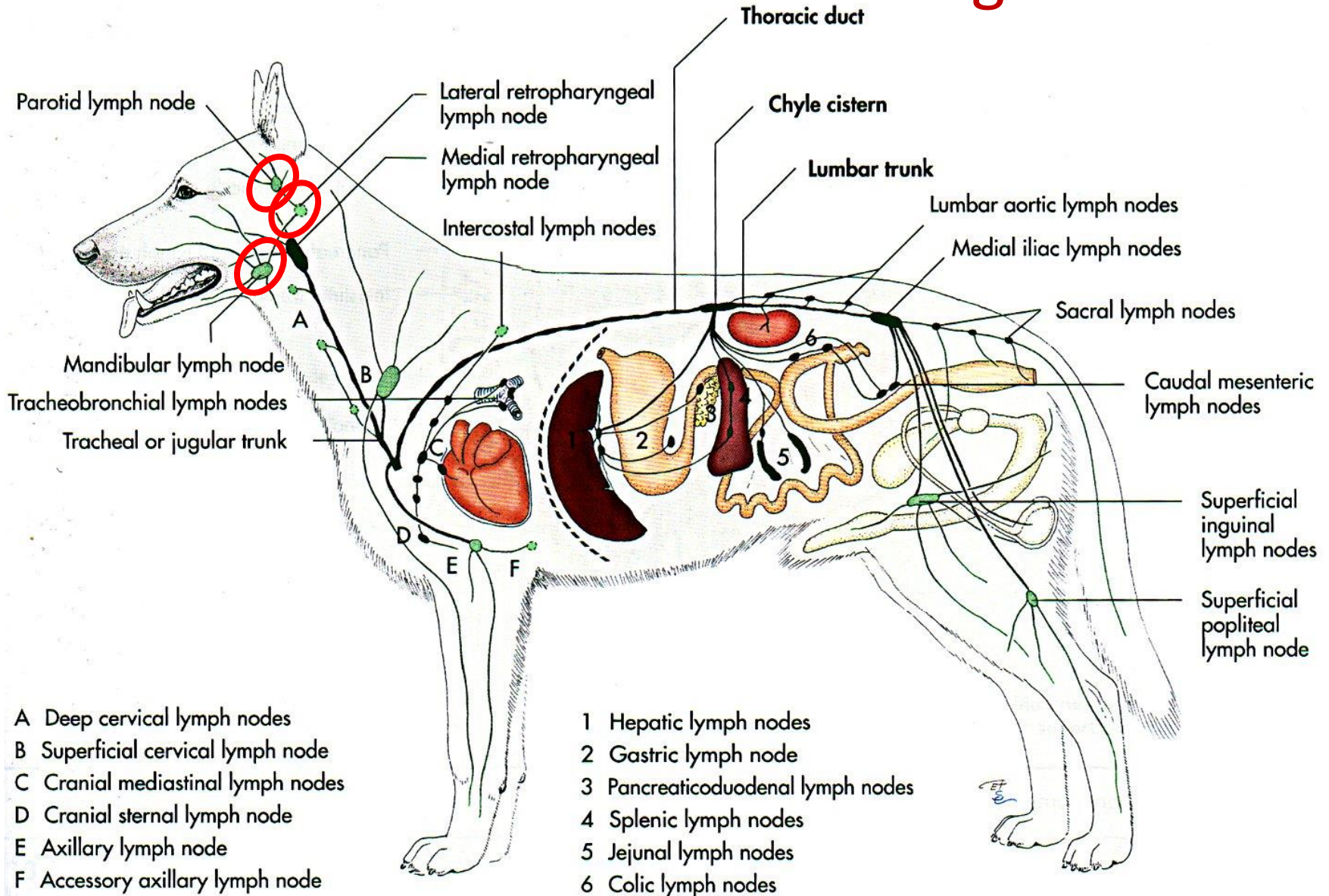
Cães e ruminantes – em geral um ou dois linfonodos por região

Equinos e suínos – vários pequenos linfonodos por região

Linfocentros

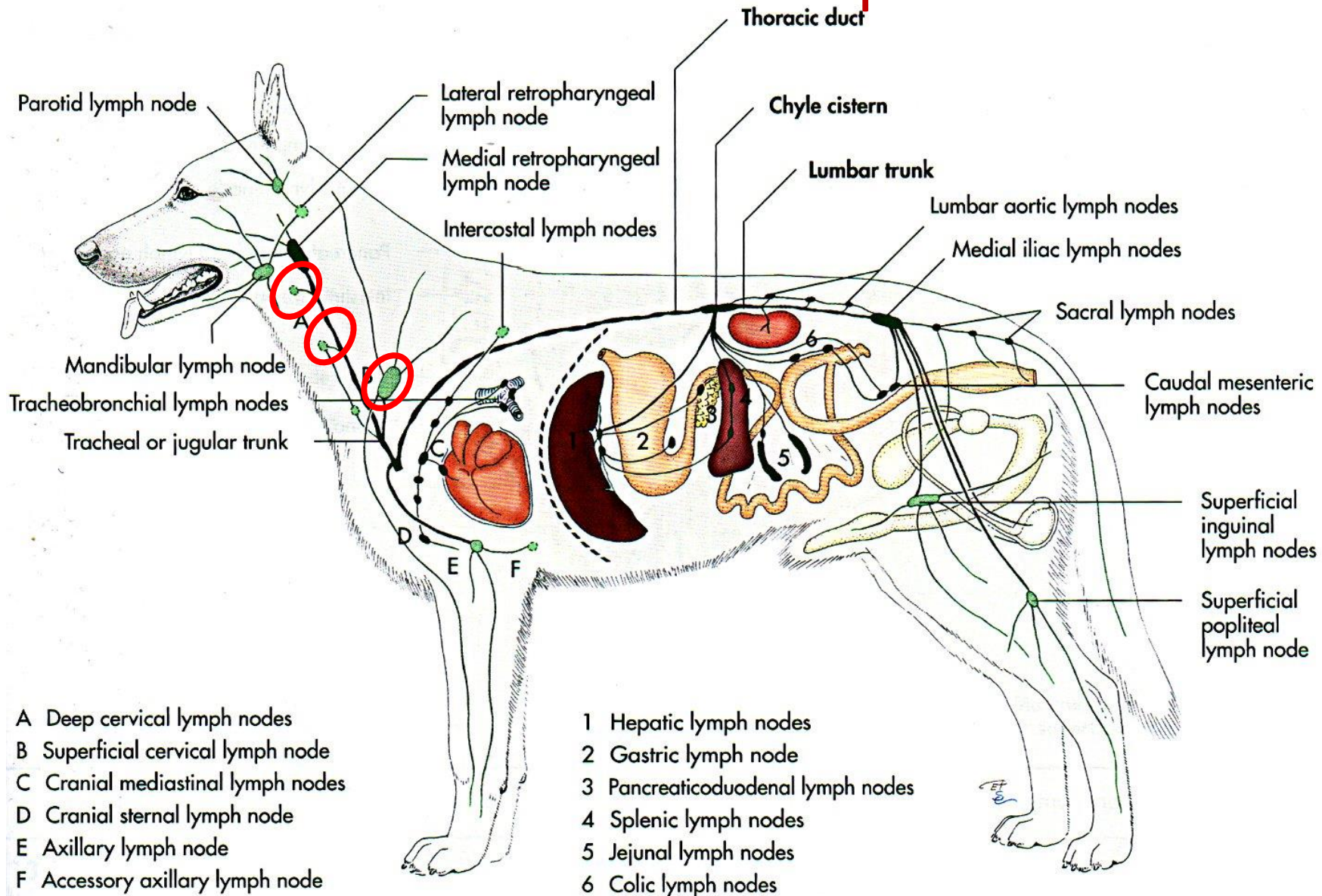
Linfonodos da Cabeça

Linfocentro ~~Retrofaringeo~~ ~~Retrofaringeo~~



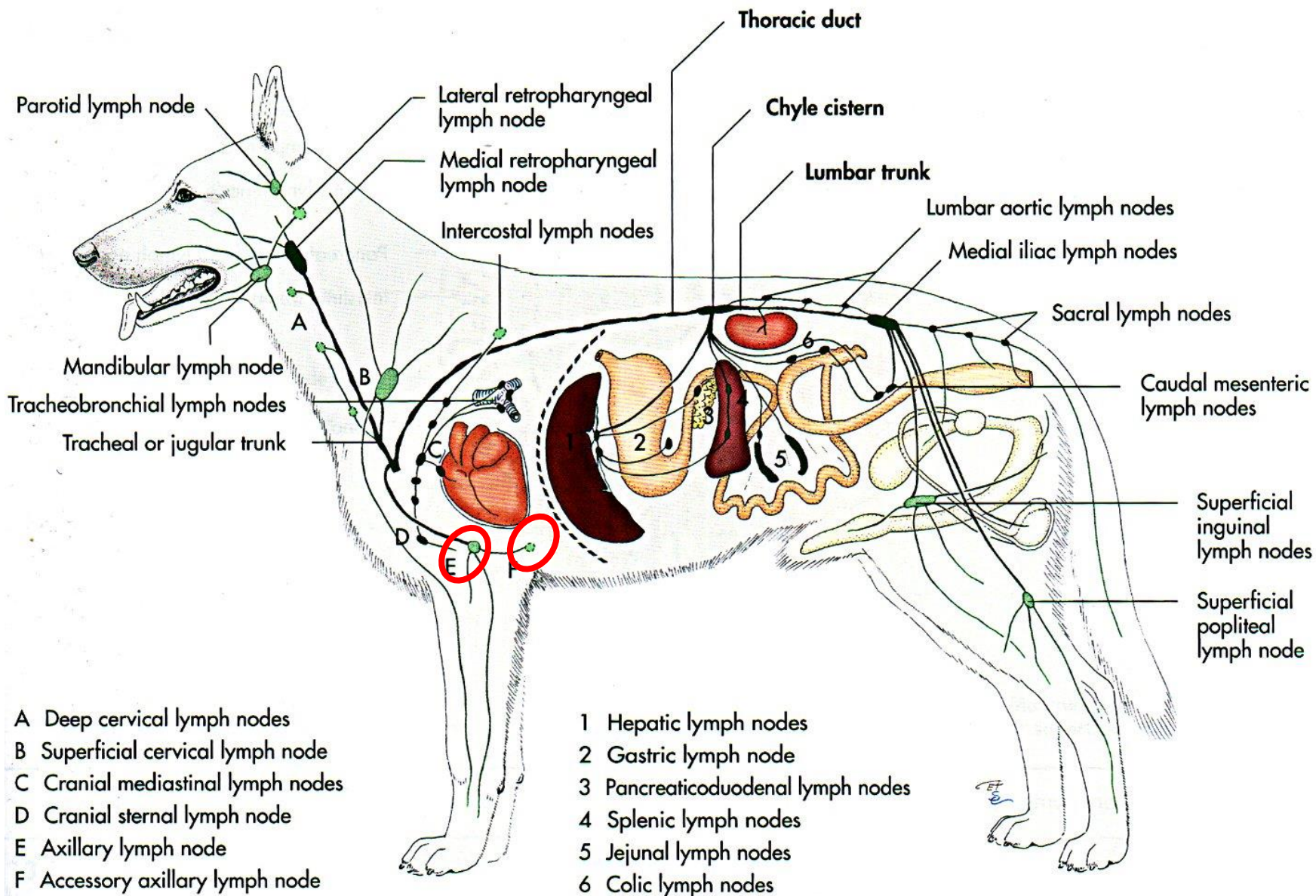
Linfonodos do pescoço

Linfocentro Cervical Superficial



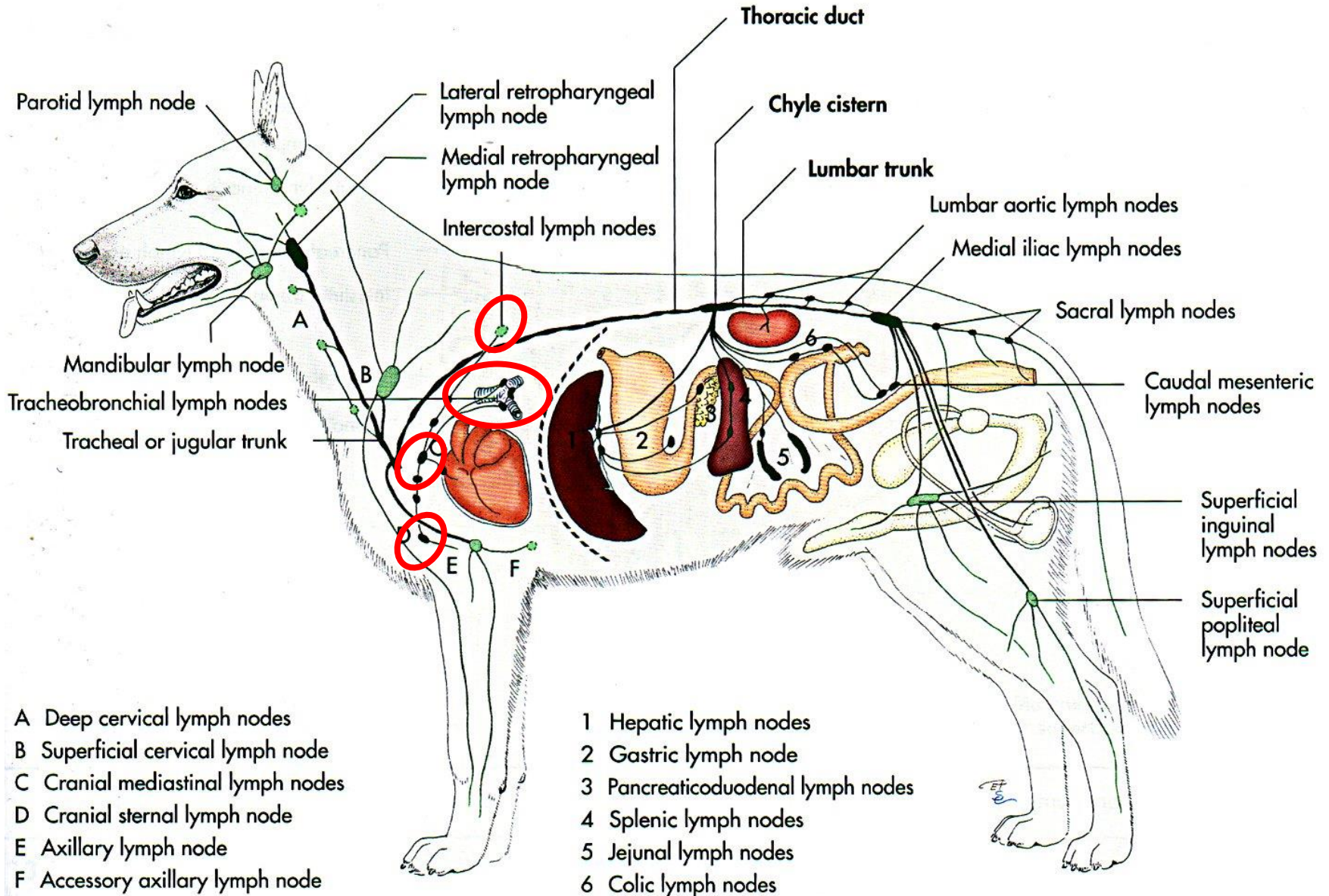
Linfonodos dos membros torácicos

Linfocentro axilar



Linfonodos do Tórax

Linfocentro Veterinária

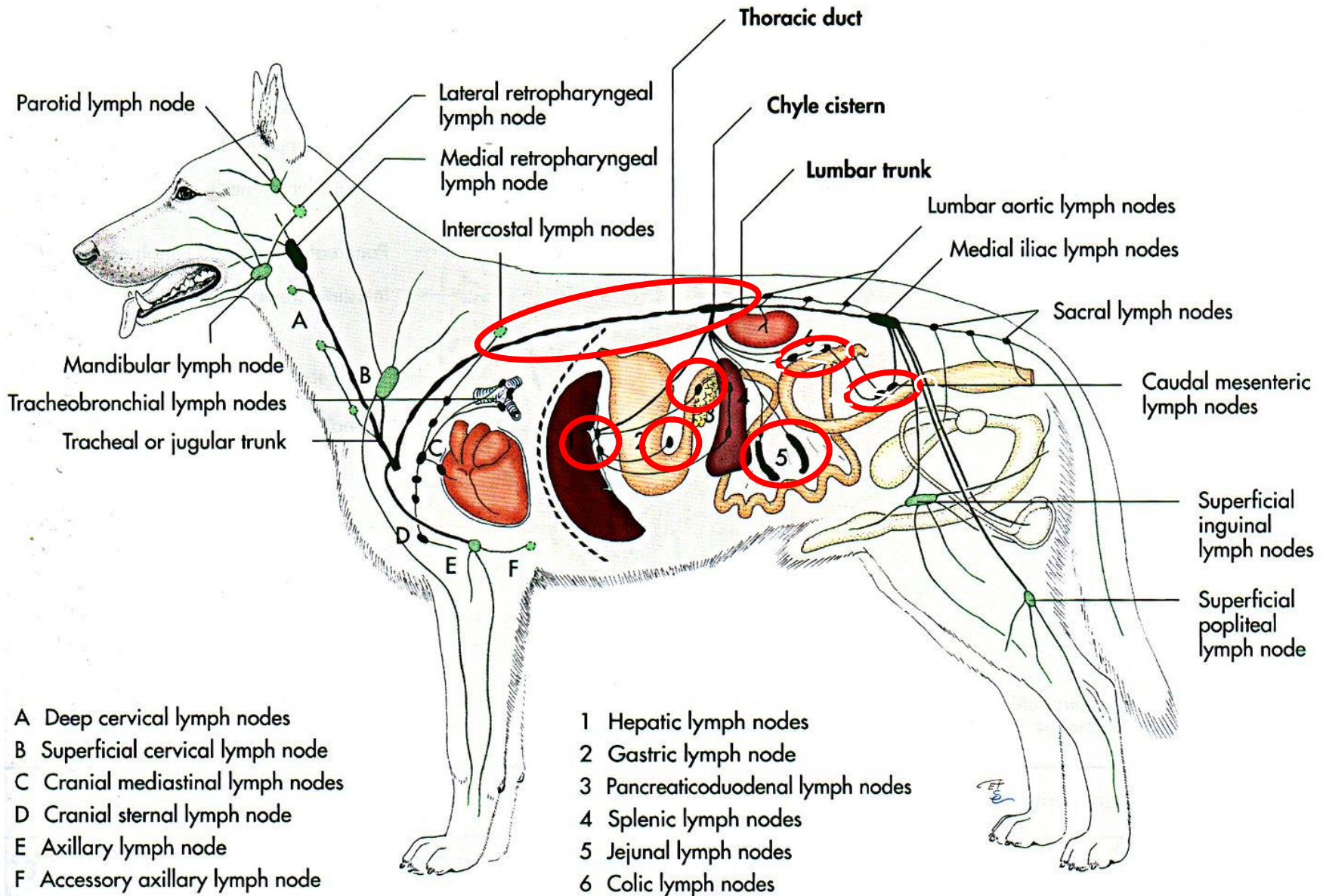


- A Deep cervical lymph nodes
- B Superficial cervical lymph node
- C Cranial mediastinal lymph nodes
- D Cranial sternal lymph node
- E Axillary lymph node
- F Accessory axillary lymph node

- 1 Hepatic lymph nodes
- 2 Gastric lymph node
- 3 Pancreaticoduodenal lymph nodes
- 4 Splenic lymph nodes
- 5 Jejunal lymph nodes
- 6 Colic lymph nodes

Ducto Torácico

Cisterna do Quilo

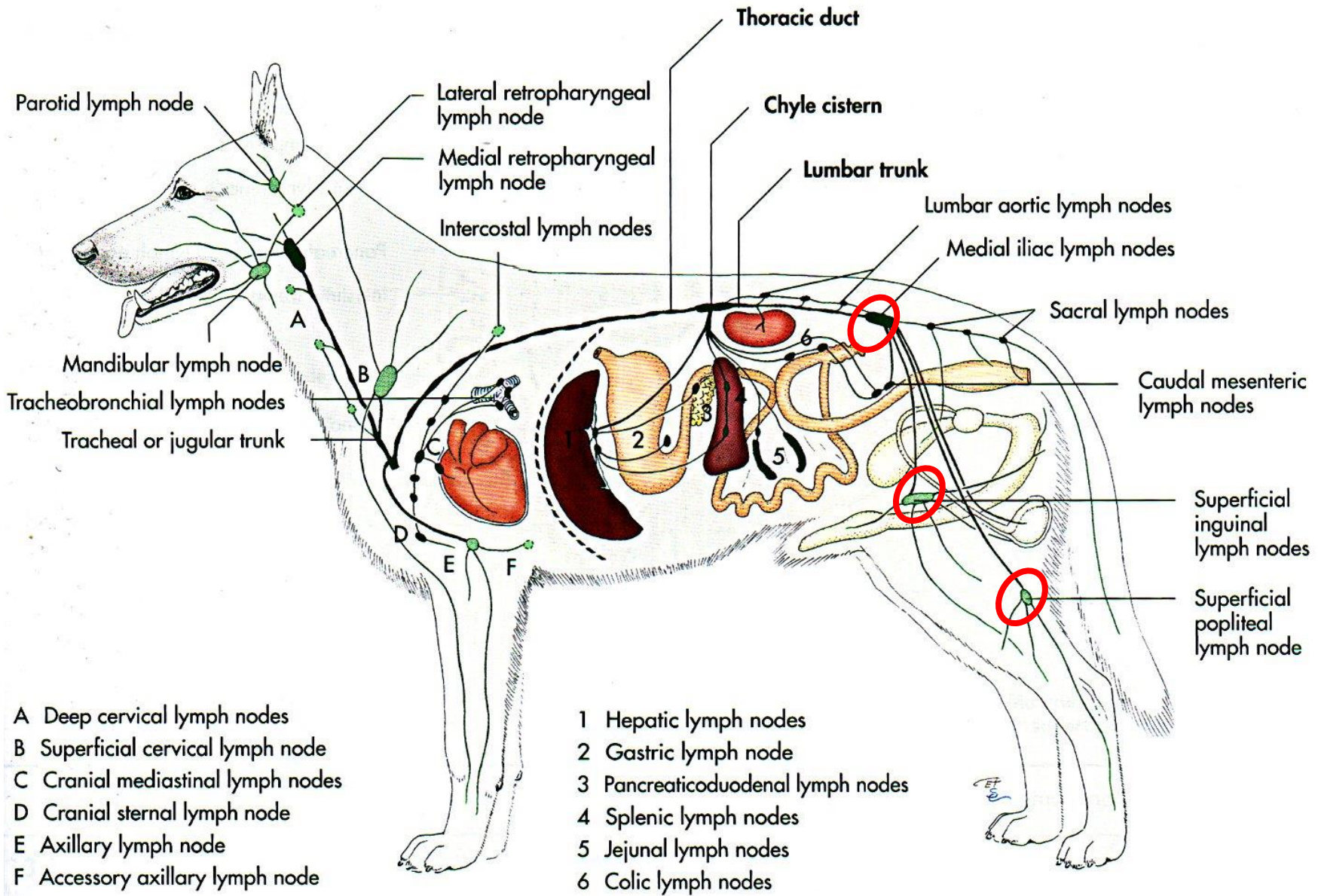


- A Deep cervical lymph nodes
- B Superficial cervical lymph node
- C Cranial mediastinal lymph nodes
- D Cranial sternal lymph node
- E Axillary lymph node
- F Accessory axillary lymph node

- 1 Hepatic lymph nodes
- 2 Gastric lymph node
- 3 Pancreaticoduodenal lymph nodes
- 4 Splenic lymph nodes
- 5 Jejunal lymph nodes
- 6 Colic lymph nodes

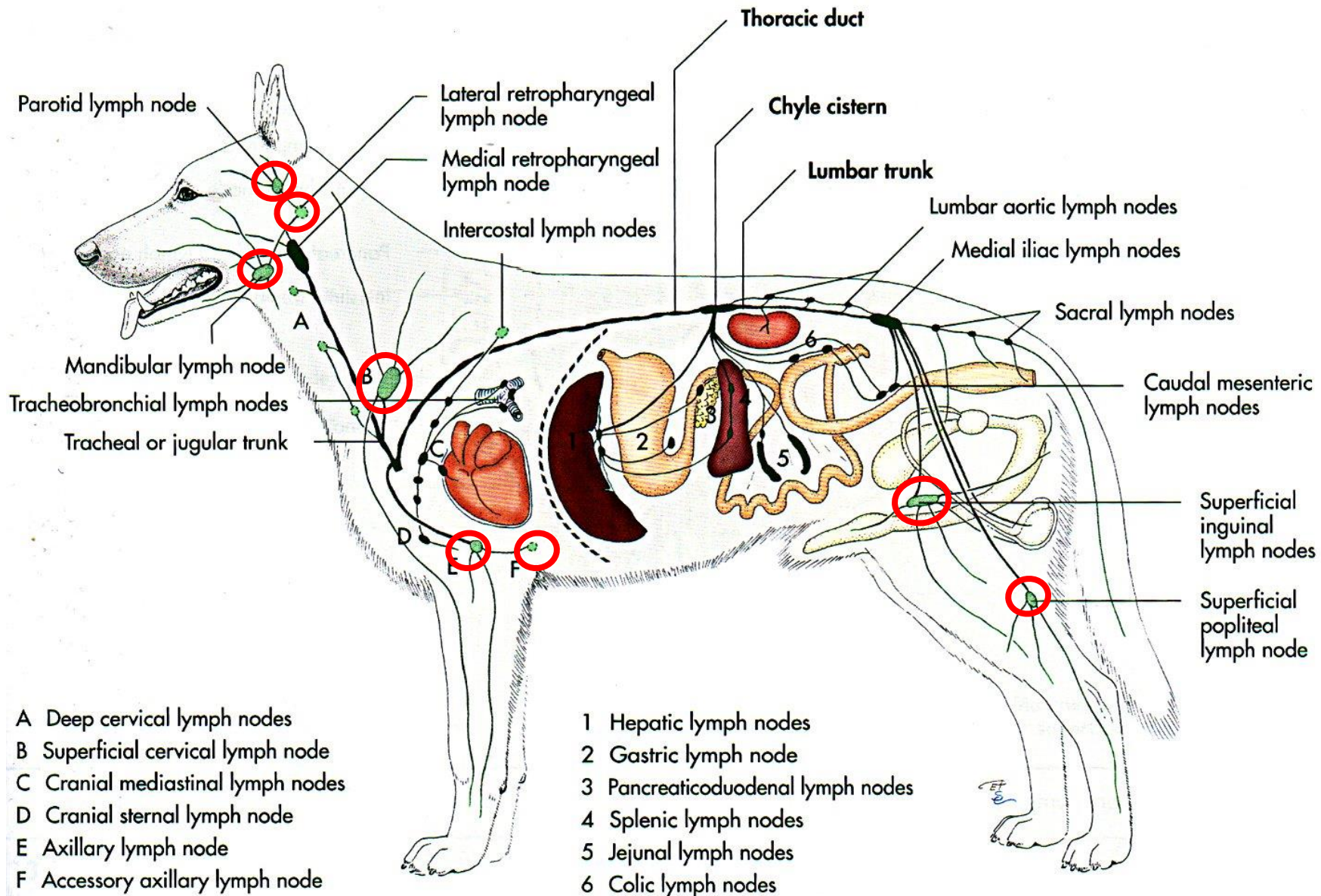
Linfonodos do membro pélvico, pelve e abdome

Linfocentro Regional Superficial

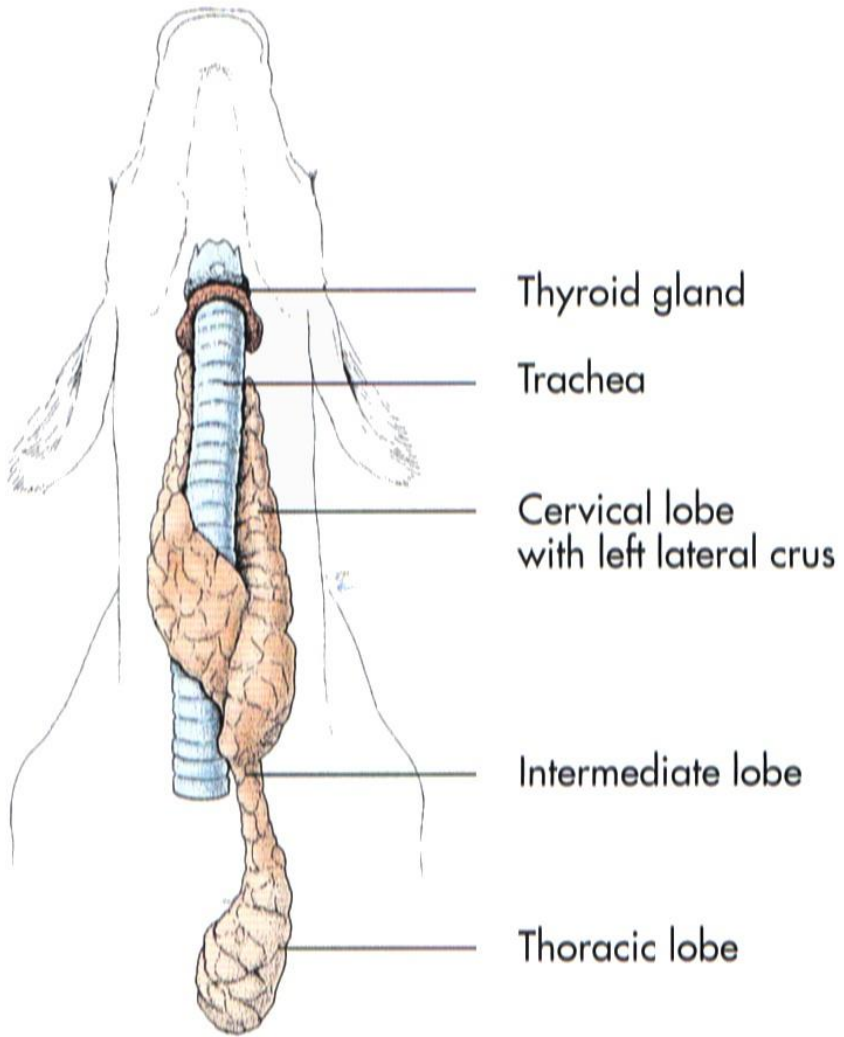


- A Deep cervical lymph nodes
- B Superficial cervical lymph node
- C Cranial mediastinal lymph nodes
- D Cranial sternal lymph node
- E Axillary lymph node
- F Accessory axillary lymph node

Linfonodos Palpáveis no Cão

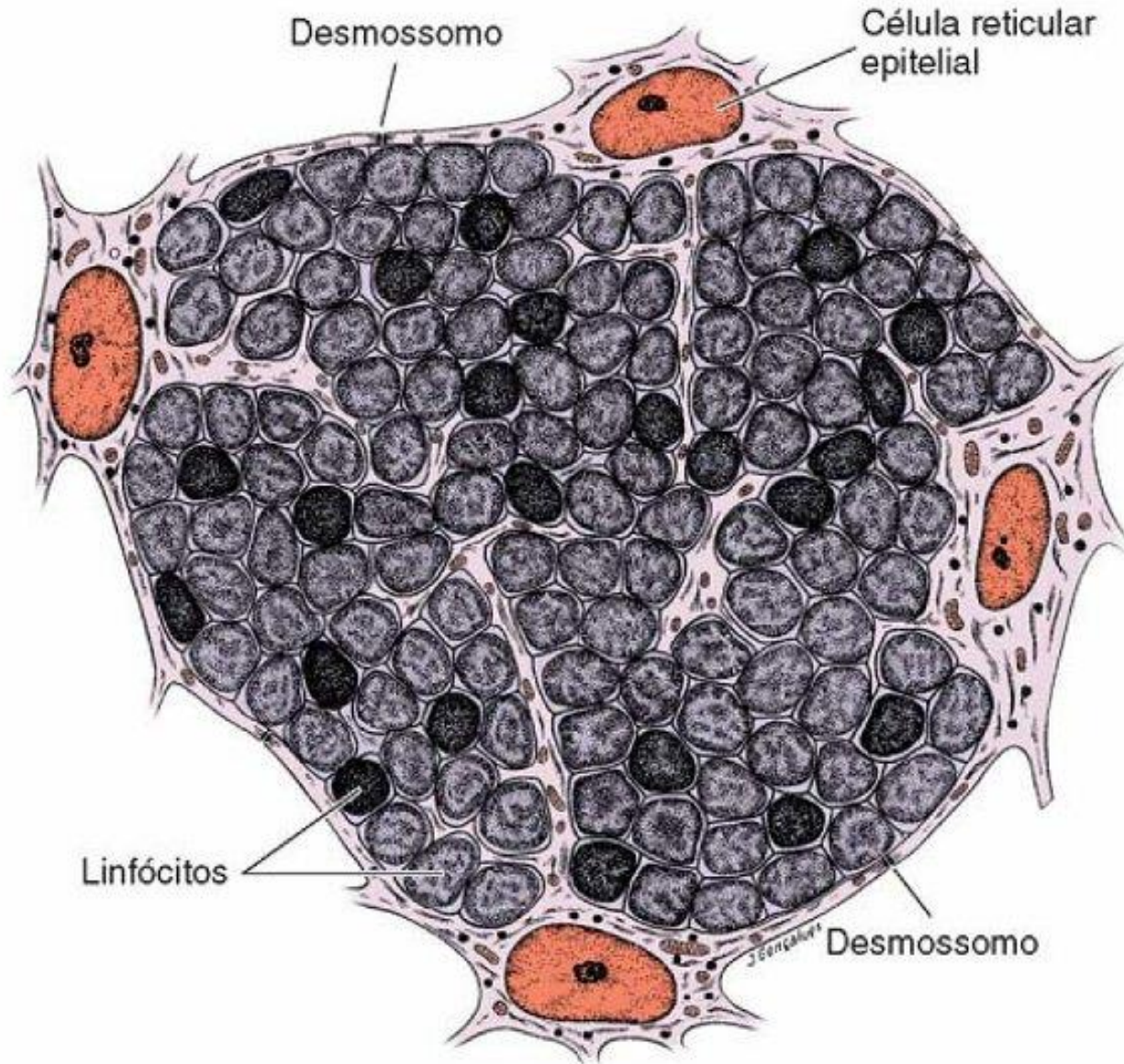


Timo



Timo

Histologia



Timo

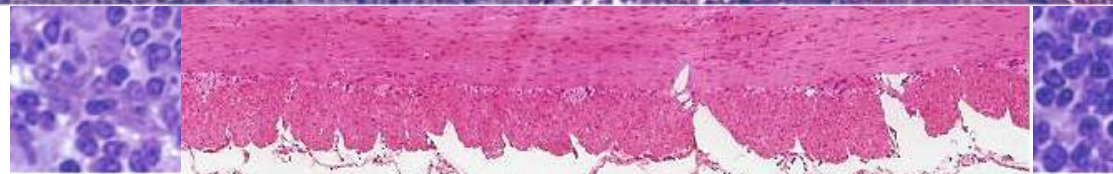
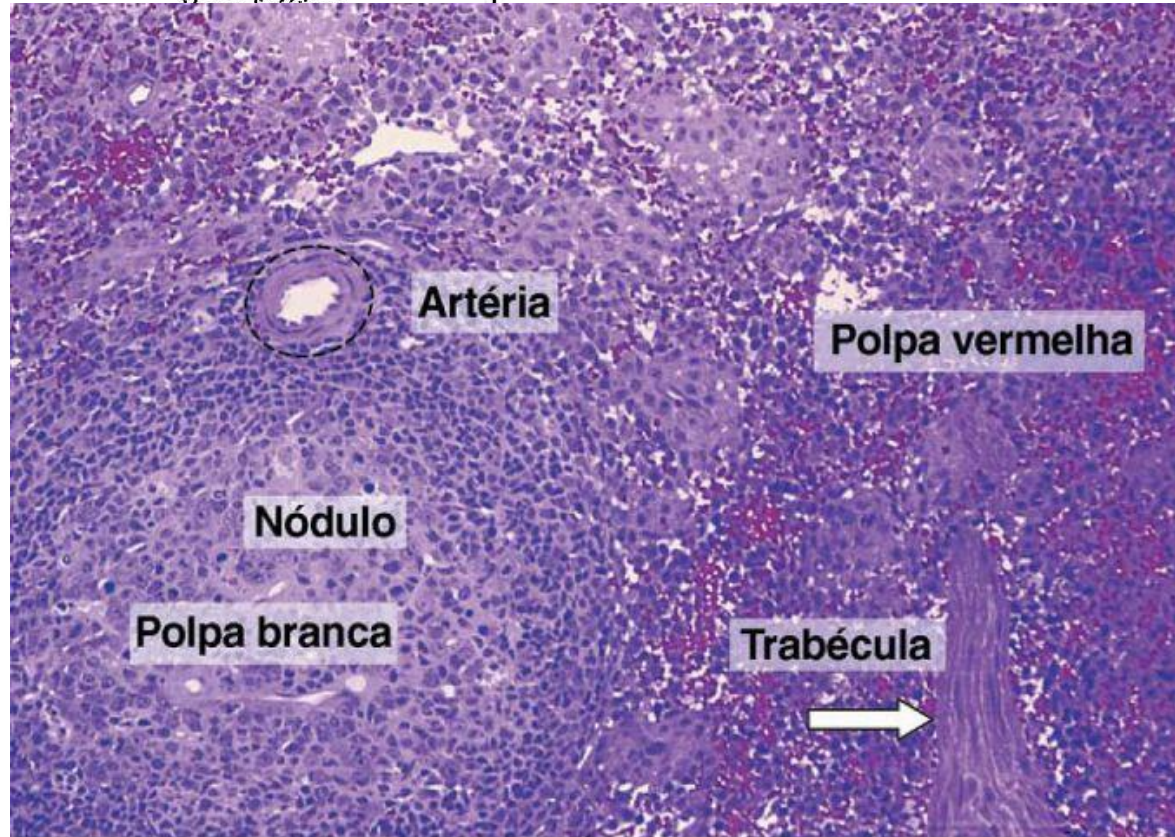
Corpúsculo tímico (Hassal)

Zonas Timo-dependentes

Timopoiatina

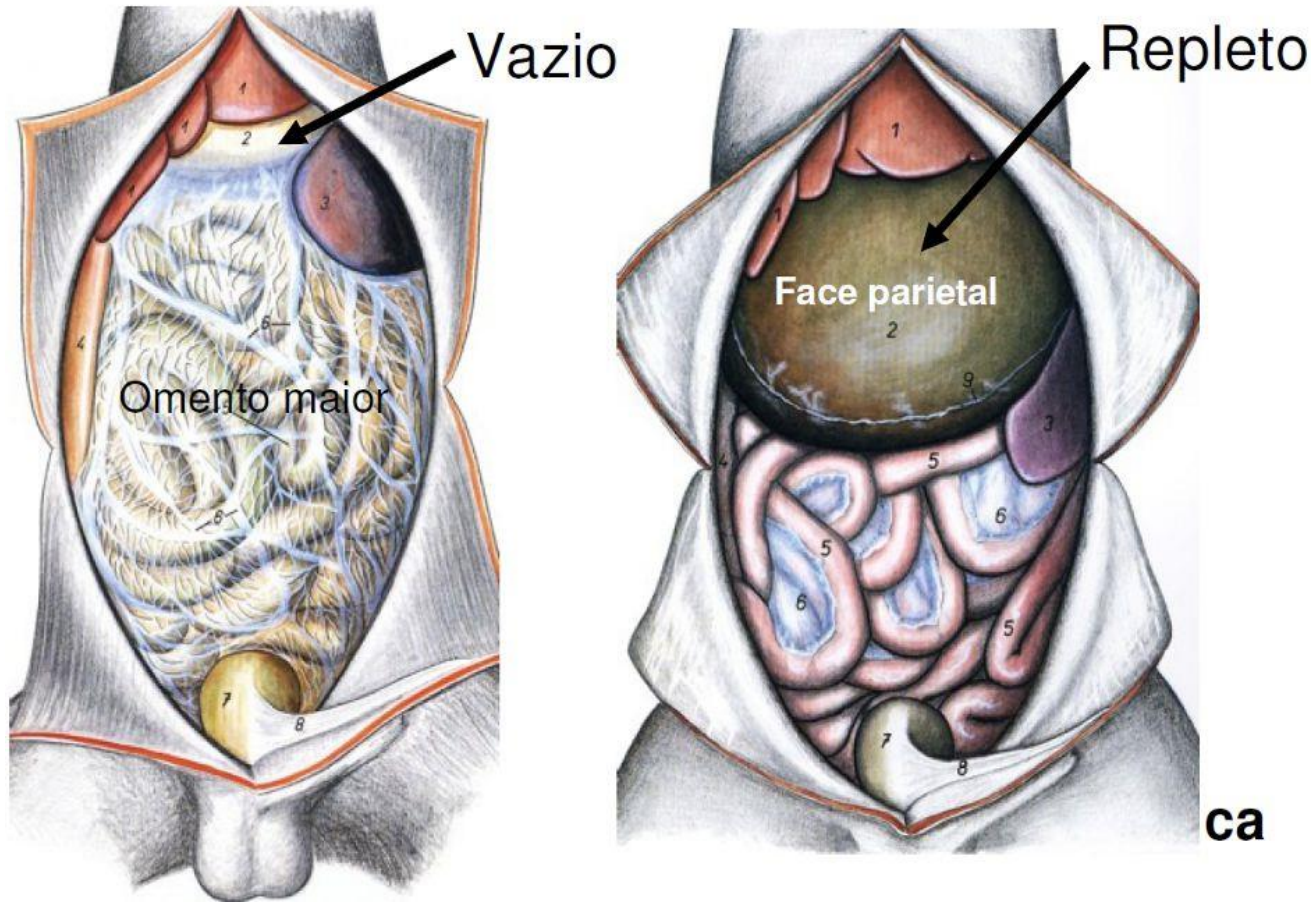
Zona Paracortical dos
Baixa periarterial da
Placas de Peyer
Linfonodos
polpa branca do baço

Linfonodo



Baço

Topografia e Sintopia

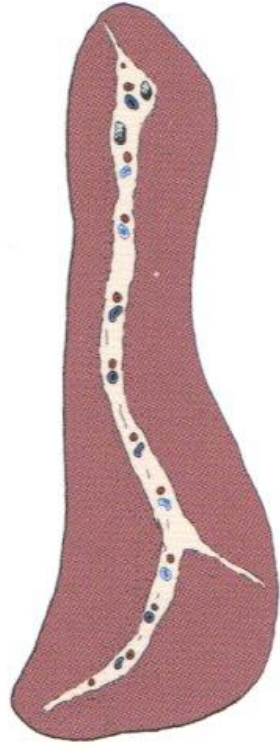


Ligamento gastroesplênico

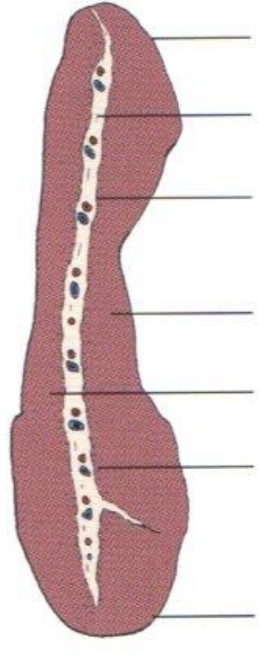
Baço



Pig



Dog



Cat

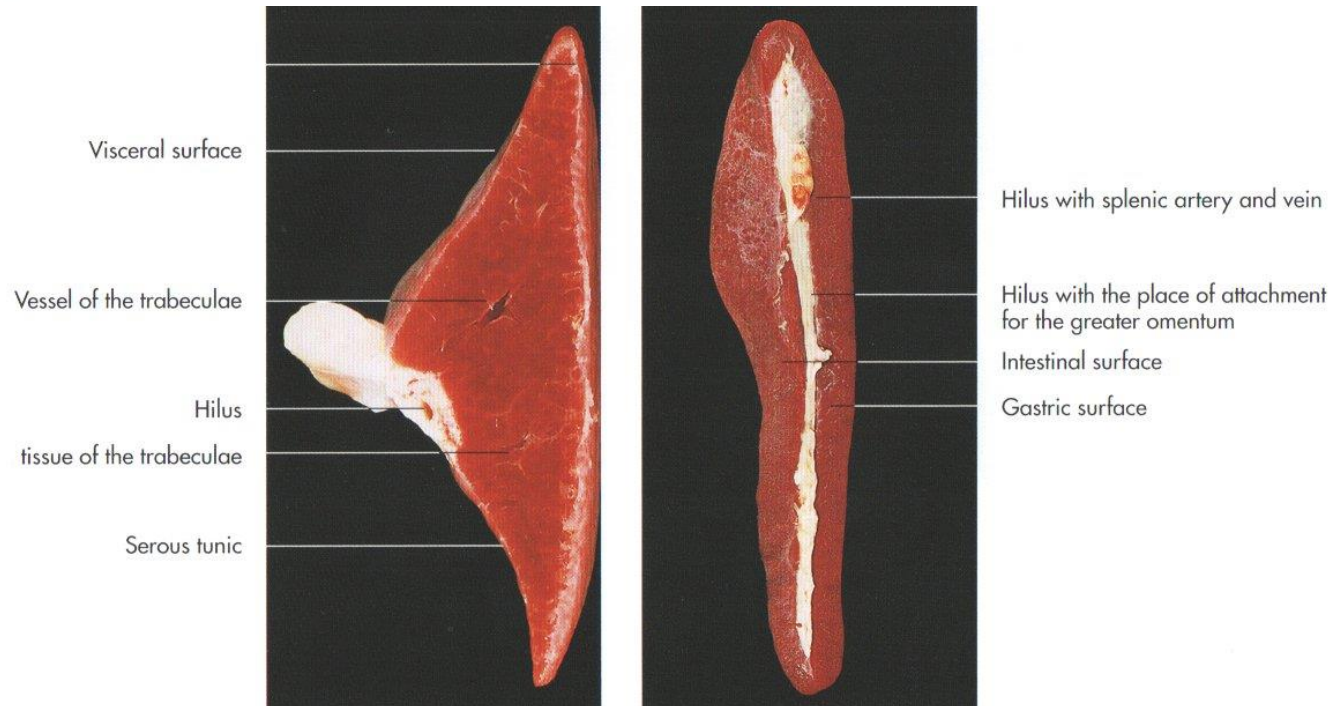
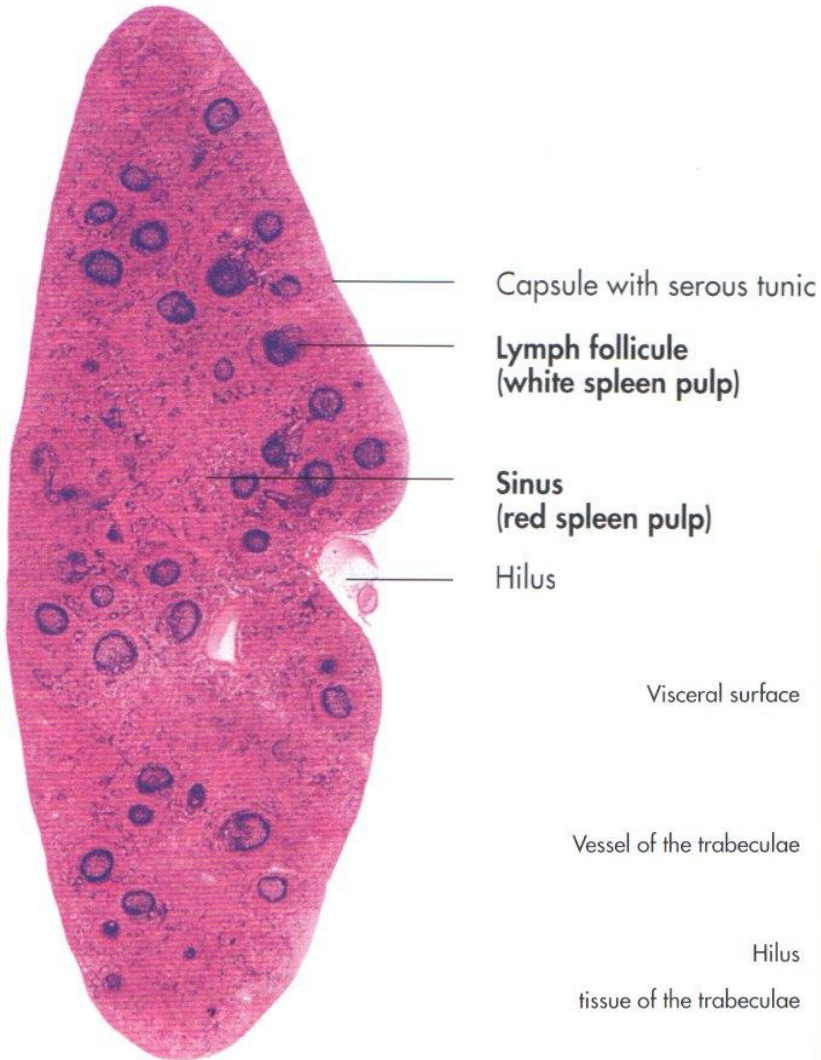
- Dorsal extremity
- Hilus
- Place of attachment for the greater omentum
- Gastric surface
- Intestinal surface
- Splenic artery and vein
- Ventral extremity

Baço

Polpa vermelha

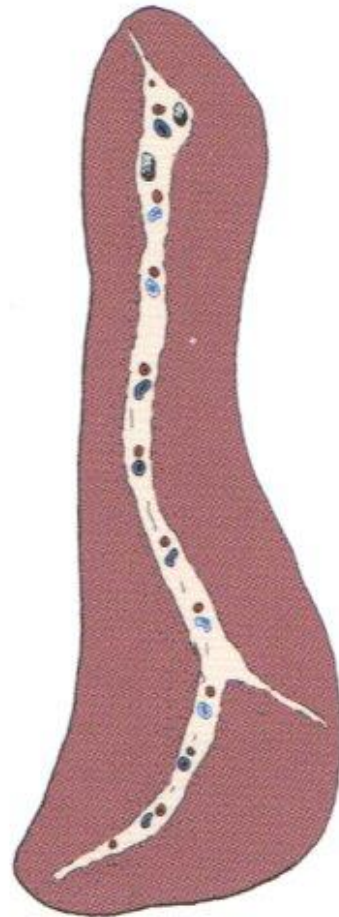
Polpa branca

Hilo

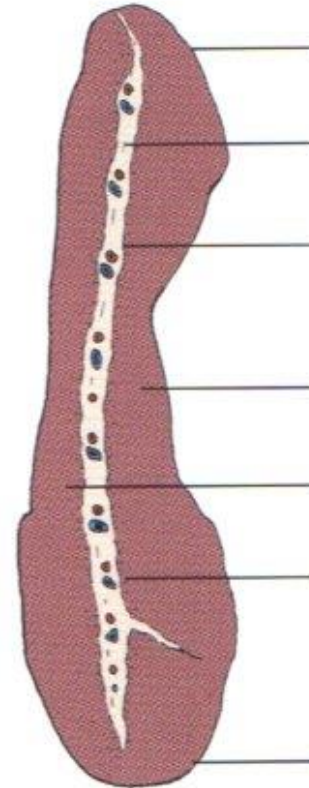




Pig



Dog



Dorsal extremity

Hilus

Place of attachment for the greater omentum

Gastric surface

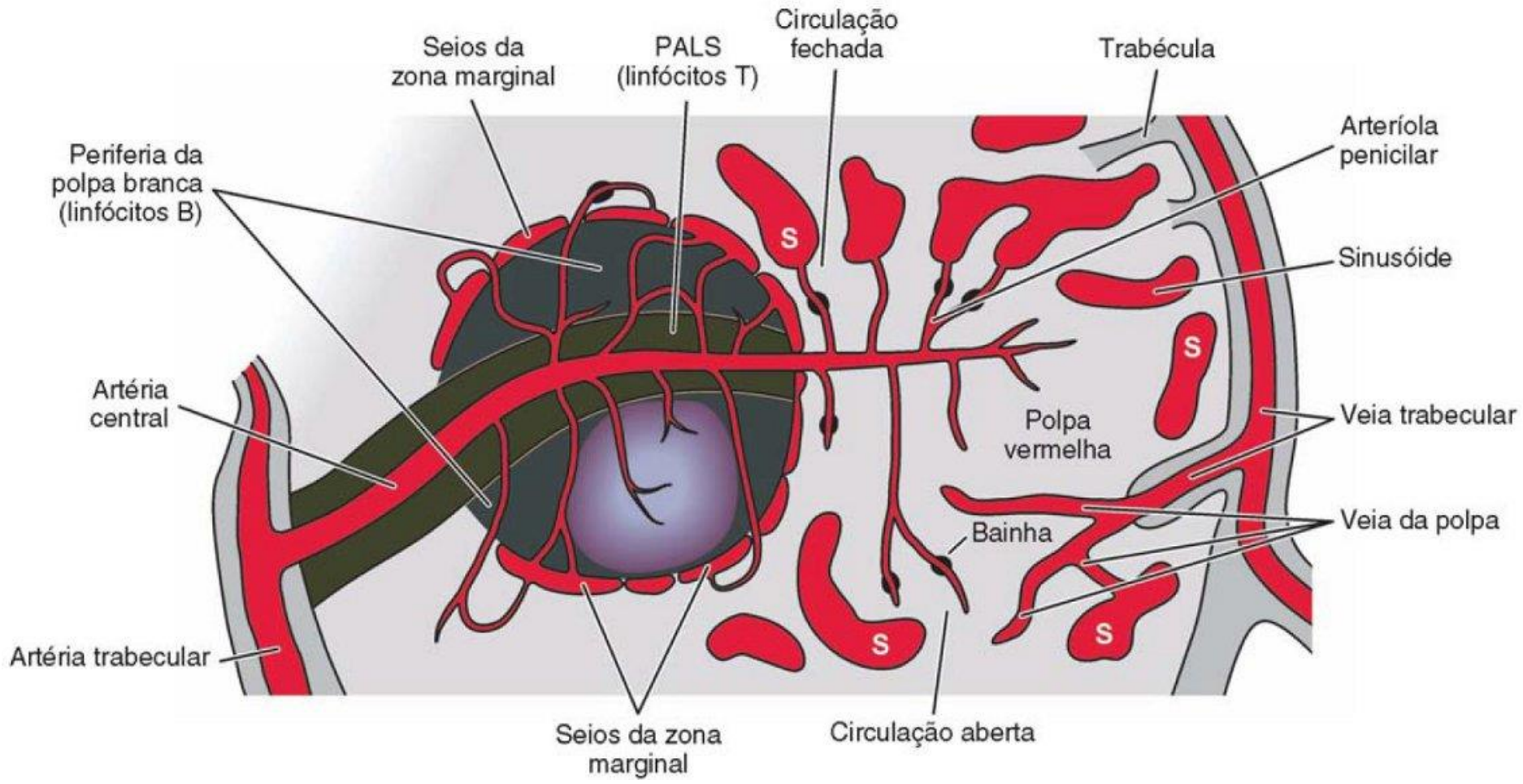
Intestinal surface

Splenic artery and vein

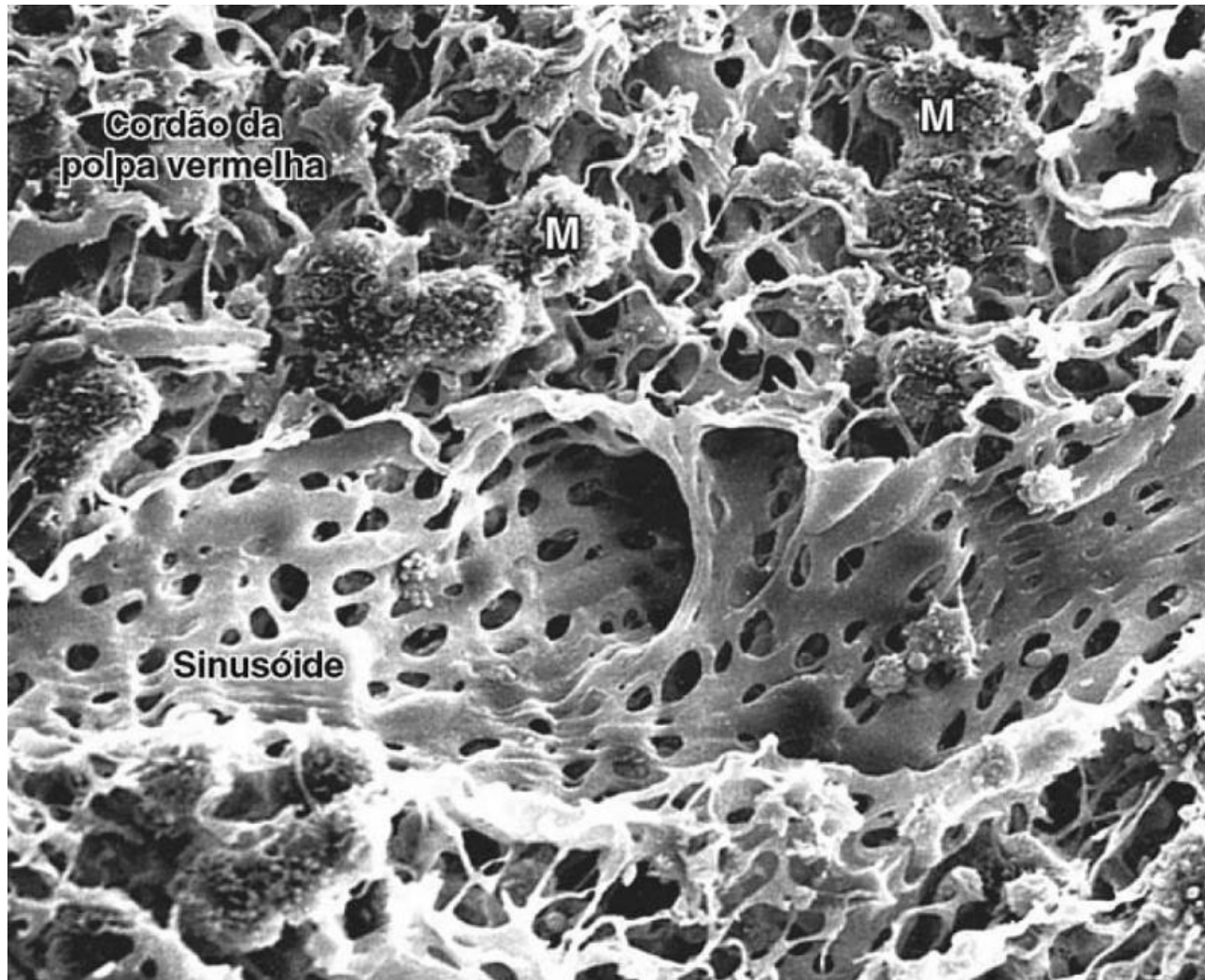
Ventral extremity

Cat

Baço



Baço



Obrigado pela atenção

FIM