

Legitimacy in Criminal Governance: Managing a Drug Empire from Behind Bars

BENJAMIN LESSING *University of Chicago*

GRAHAM DENYER WILLIS *University of Cambridge*

States, rebels, and mafias all provide governance beyond their core membership; increasingly, so do prison gangs. US gangs leverage control over prison life to govern street-level drug markets. Brazil's Primeiro Comando da Capital (PCC) gang goes further, orchestrating paralyzing attacks on urban targets, while imposing a social order throughout slums that sharply reduces homicides. We analyze hundreds of seized PCC documents detailing its drug business and internal disciplinary system. Descriptively, we find vast, consignment-based trafficking operations whose profits fund collective benefits for members' families; elaborate bureaucratic procedures and recordkeeping; and overwhelmingly nonviolent punishments for debt-nonpayment and misconduct. These features, we argue, reflect a deliberate strategy of creating rational-bureaucratic legitimacy in criminal governance. The PCC's collectivist norms, fair procedures, and meticulous "criminal criminal records" facilitate community stigmatization of infractors, giving mild sanctions punitive heft and inducing widespread voluntary compliance without excessive coercion. This has aided the PCC's rapid expansion across Brazil.


Rebel groups often provide governance as a means of contesting formal state power (Arjona, Kasfir, and Mampilly 2015), but criminal groups with narrower aims also govern people and spaces. Criminal governance can extend beyond organizations' core members to entire illicit markets and the civilian communities where such markets operate. Canonically associated with mafias and protection rackets (e.g., Blok 1974; Skaperdas and Syropoulos 1997; Tilly 1985), criminal governance is increasingly being provided by drug-trafficking organizations (DTOs), quite often ones

based *within* prison. Scholarship on US prison gangs has provided foundational insights (Skarbek 2011), but generally lacks systematic data on the practices that sustain and constitute prison-based criminal governance, especially beyond the prison walls. Moreover, US cases do not cover the empirical range of prison-based governance: Brazilian prison gangs govern more intensely and extensively, ruling large urban populations and across enormous swaths of territory. This article explores the governance practices of São Paulo's Primeiro Comando da Capital (PCC), likely the most powerful prison gang in the world and *the* leading case of prison-based criminal governance. We analyze a trove of the PCC's own financial and disciplinary records, identifying a novel form of criminal governance and theorizing its underlying mechanisms.

Founded within a São Paulo prison in 1993 by a handful of inmates, the PCC has grown into Brazil's foremost threat to state authority. With some 29,000 "baptized" members as of 2018 (Paes Manso and Dias 2018, 19), it is among the largest criminal organizations in the hemisphere. The PCC now controls over 135 prisons in São Paulo state alone and has established cells in all 27 Brazilian states and at least five neighboring countries. It leverages this control to project its power onto the streets, with countervailing effects. The PCC has repeatedly orchestrated debilitating terror attacks on state and civilian targets. Yet it also banned unauthorized killings throughout the informally urbanized peripheries where it wields influence, contributing to a drastic and sustained reduction in statewide homicide rates of about 75 percent.

We analyze systematic data on the PCC's street-level drug business and internal disciplinary system, making empirical and theoretical contributions. Empirically, we find that drug retailing is consignment-based, punishments are mild and meticulously recorded, default rates are low, and the resulting profits fund welfare for member families. These features, we hypothesize, flow jointly from the PCC's overarching approach to governance: not just

Benjamin Lessing , Assistant Professor of Political Science, The University of Chicago, blessing@uchicago.edu.

Graham Denyer Willis , University Senior Lecturer, Department of Politics and International Studies, University of Cambridge, gdw27@cam.ac.uk.

For their thoughtful comments, we thank Peter Andreas, Desmond Arias, Marcelo Bergman, Thomas Grisaffi, Stathis Kalyvas, Mark Kleiman, Beatriz Magaloni, Roger Myerson, Robert Pape, Robert Powell, Jacob Shapiro, David Skarbek, Paul Staniland, and Lisa Wedeen, and three anonymous APSR reviewers. We also thank the participants of the National Bureau of Economic Research Summer Institute, workshops at University of Cambridge, University College London, and the America Latina Crime and Policy Network (AL CAPONE). Douglas Block and Wenyan Deng provided invaluable research assistance. All errors are our own.

We gratefully acknowledge financial support from the Social Science Research Council/Open Society Foundations, the Harry Frank Guggenheim Foundation, the Department of Politics and International Studies at the University of Cambridge, the Center for International Social Science Research and the Pearson Institute for the Study and Resolution of Global Conflict at the University of Chicago, and the Social Science and Humanities Research Council of Canada. Benjamin Lessing received additional support from award W911-NF-1710044 from the US Department of Defense and US Army Research Office/Army Research Laboratory under the Minerva Research Initiative. The views expressed are those of the authors and should not be attributed to any of these agencies or foundations. Replication files are available at the American Political Science Review Dataverse: <https://doi.org/10.7910/DVN/QVY8JO>.

Received: March 6, 2017; revised: February 6, 2018; accepted: December 10, 2018.

imposing its rule, but establishing a form of legitimacy along Weberian, rational-bureaucratic lines. This approach induces voluntary compliance among members while minimizing internal violence, keeping a decentralized, credit-based drug business profitable in spite of endemic agency problems, and in the face of intense militarized policing.

The descriptive findings in this trove are varied. For example, the same organization that loans guns and rent money to recently released members getting a fresh start also spent USD 500 on children's Easter eggs. We highlight four sets of substantively and theoretically puzzling findings.

First, the PCC's trafficking operations in upstate São Paulo—the region covered by our data—run on a consignment basis. This contrasts with the hierarchical franchise structure and territorial control employed by Rio de Janeiro's Comando Vermelho—an older prison-gang-cum-drug-cartel that the PCC initially emulated—and the Chicago gang analyzed by Levitt and Venkatesh (2000). In the five months that we observe, the PCC consigned 550 kg of crack and 90 kg of powder cocaine to a decentralized, competitive network of some 500 individual dealers across 89 municipalities, extending about USD 3.2 million in microcredit.¹ The nonpayment rate, we estimate, was lower than the 30.7 percent markup the PCC charges dealers.

Second, the resulting profits are not paid out to an “owner” or “shareholders” but rather used to provide collective goods. After paying off bulk drug purchases, revenues primarily financed an elaborate transportation network for members' families to far-flung prisons on visitation days and other member welfare benefits, such as funeral costs.

Third, the PCC possesses a complex system of internal discipline characterized by clear rules, collectivist norms, and administrative procedures to ensure transparency and fairness. Critically, unpaid debts were punished exclusively with nonviolent sanctions such as suspension or expulsion from the organization, and physical punishment was exceedingly rare.

Fourth, the documents reveal a thoroughgoing embrace of bureaucracy: codified structures and procedures, reflected in meticulous recordkeeping. While attention to detail is unsurprising in financial documents, even greater care goes into maintaining the individual personnel files we dub “criminal criminal records,” which track members' background and history of interactions with the organization, including previous infractions. The PCC, our trove reveals, is a prodigious producer and keeper of data.

We advance a theory of legitimate criminal governance to explain these findings. The PCC's consignment model is subject to agency problems: It requires regular repayment by far-flung dealers with incentives to default. The procedurally fair and meticulously documented system of “criminal criminal justice” solves this problem, inducing widespread voluntary compliance

through several complementary mechanisms. At the level of individual rationality, the PCC's procedures yield accurate records and common knowledge of dealers' past performance and infractions, so that even a mild punishment like a short suspension (by far the most common punishment observed) carries a powerful stigma, incentivizing timely debt repayment. At a more systemic level, the relative mildness of the PCC's enforcement regime, its attention to fairness in business dealings (including negotiated solutions for debtors in dire straits), and its prioritization of public-goods and welfare provision all flow from a depersonalized bureaucracy oriented around a body of collectivist norms, rules, and practices. The result is a criminal form of legitimate, rational-bureaucratic authority (Weber 1968) characterized by submission and loyalty not to individual charismatic leaders but to a fair, efficacious, and universal “law.”

How do mild punishments like suspension from the organization induce individual compliance? Ultimately, it is by providing information to other criminals. As Gambetta (2009) observes, for criminals to work together, they need to identify and reliably assess one another without revealing themselves to authorities. Gambetta focuses on symbolic codes as signals, but suggests that incarceration, ironically, can solve this adverse-selection problem since “just being a prisoner is a clear and simple sign that one is criminally inclined” (2009, 11). Moreover, the fairer the official criminal justice system, that is, the more accurately it distinguishes the guilty from the innocent, the more reliable the signal that incarceration sends.

An inverse logic applies to prison gangs' internal disciplinary systems. A member in good standing, besides having been convicted by the state, carries the gang's seal of approval; an expelled or punished member has been found wanting. What others can infer from gang punishment depends on that gang's rules, norms, and disciplinary practices. If sanctions are meted out arbitrarily, they convey little information about punished members' actual performance or “type.” Conversely, the fairer the “criminal criminal justice” system, the clearer the signal that punishment sends. A mild, nonviolent punishment, if fairly meted out and meticulously recorded, can carry a burdensome stigma.

The PCC's elaborate, standardized procedures must be understood in this light. Its system of graded punishments for dealers with overdue consignment debts—including an escalating “three strikes” rule—is tempered by flexibility and patience when dealers face unpredictable setbacks (such as arrest) or make good faith efforts to repay. For more serious infractions, the PCC employs lengthy and potentially risky semi-public trials, often adjudicated by imprisoned “elders,” and designed to reduce false convictions and excessive punishment (e.g., Feltran 2010). The costs of operating this system, we argue, are offset by important dividends: The PCC's reputation for *not* being hasty, arbitrary, or unfair increases the stigma of suspension or expulsion, because those convicted cannot credibly claim innocence.

¹ Our financial data spans September 2011–April 2012; for convenience, we use the January 1, 2012, exchange rate (1.867 BRL/USD) throughout. The rate has depreciated significantly since.

The PCC's meticulous recordkeeping amplifies this effect; who needs symbolic codes when you have detailed records of previous misconduct and punishment, including a cell phone number to call for case details? This use of recordkeeping to induce good behavior recalls several theorized mechanisms in the literature. Shapiro and Siegel (2012) show how the institutional memory that recordkeeping facilitates allows terrorist leaders to better motivate operatives who may otherwise slack or skim.² Relevant too is Milgrom et al.'s model of the Law Merchant, in which accurate, centralized recordkeeping can produce cooperation "without the benefit of state enforcement of contracts" (1990, 2). Such conditions prevail in the criminal underworld, especially in the far-flung regions covered by our trove, where the PCC's ability to physically punish rulebreakers may be relatively weak.

However, the PCC also employs elaborate bureaucracy, codified procedures, normative appeals, and generally mild punishment in places where its punitive power is immense: within prison (Dias and Salla 2013) and São Paulo's urban periphery (e.g., Feltran 2010). Moreover, our data suggest that even when PCC leaders harshen discipline to address excessive non-compliance, they avoid draconian measures that might maximize short-term profits at the expense of fairness. Thus, we argue, the PCC deliberately eschews raw coercive power in order to maintain a form of legitimacy, along rational-bureaucratic lines.

It is an enduring irony that trustworthy, efficient, "Weberian" governance should arise among the targets of a state coercive apparatus guided by a brutal and corrupt "unrule of law" (Mendez, O'Donnell, and Pinheiro 1999), in a country long hamstrung by bureaucratic inefficiency and patrimonialism (Evans 1995). More ironic still, PCC governance depends on the state's own mass-incarceration policies, which swell the PCC's ranks and—by raising the chances of eventual incarceration—give it leverage over criminals on the street (Lessing 2017). In São Paulo, these policies inadvertently, perversely helped create a criminal "pocket of efficiency" (Geddes 1990) capable of governing a sprawling prison system, a decentralized criminal network, and a vast, impoverished urban periphery. While not the first or only Brazilian prison gang to establish street-level governance, the PCC's rational-bureaucratic structure contrasts with more charismatic, territorial, and violent approaches, constituting a novel and potentially transformative model for organizing crime from behind bars. The PCC's ongoing expansion throughout the prisons and peripheries of Brazil and into neighboring countries is chilling evidence of this.

In the sections below, we conceptualize criminal governance, provide empirical background, describe our data and related ethical and methodological issues, present empirical findings, and discuss these findings in light of our theory of the PCC's legitimacy-based

approach to governance. We conclude with implications for literatures on state formation and insurgency.

VARIETIES OF CRIMINAL GOVERNANCE³

Criminal governance is more varied than rebel governance in terms of who is governed. "Rebel governance" generally refers to rebel–civilian interactions, and criminal organizations may also impose rules on and/or provide public goods to noncriminal "civilian" populations (e.g., Leeds 1996; Ley, Mattiace, and Trejo 2018). However, "criminal governance" may also refer to groups' internal governance (e.g., Leeson and Skarbek 2010), or their governance over wider populations of criminal actors, often within a specific illicit economy, ethnicity, or territory (e.g., Campana and Varese 2018; Skarbek 2011). This capacious understanding of "criminal governance" is worth maintaining, since governance mechanisms and institutions often operate across these levels (Lessing 2018).

Criminal governance also varies in terms of what is governed, and where. Both criminal and rebel governance tend to occur in places where the state is weak. Yet, criminal groups rarely pursue rebels' overarching goal of "competitive state-building" (Kalyvas 2006). Rather than challenging state power directly, criminal governance flourishes in its interstices. These power vacuums can result from state neglect or absence, as in the Sicilian hinterlands where the Mafia arose (Blok 1974), but also through state prohibition of economic activities, producing illicit markets (Skaperdas and Syropoulos 1997). Criminal governance is often narrow, covering some criminal markets and informal economies but not others; when it extends over civilian life, it often does so unevenly. A gang might monopolize drug sales, prohibit property crime, and punish civilian contact with police, but leave realms such as informal transport and electoral politics unregulated. Consequently, the boundary between criminal and formal state governance is routinely jagged, shifting, and even porous (Arias 2006).

Another source of variation is the type of organization that governs. Whereas traditional mafias, drug cartels, and street gangs tend to govern the areas and social strata where they are physically based (Campana and Varese 2018; Levitt and Venkatesh 2000), prison gangs have demonstrated a capacity to govern from a distance. This allows them to organize retail drug markets throughout cities and even states, something street gangs and mafias have rarely if ever accomplished (e.g., Hagedorn 1994). The ethnic, racial, and cultural bases of group membership are also important. US prison gangs are sharply divided by race and ethnicity, and generally only govern co-ethnic street gangs, limiting their geographic and demographic reach. In Brazil, a myth of "racial democracy" obscures both the racialized conditions of urban poverty, violent policing, and mass incarceration that foster prison gangs (Alves 2015), and, ironically, produces racially integrated gangs capable of city- or statewide hegemony.

² Like the PCC, many terrorist organizations prefer suspensions to firing or killing operatives, although the authors attribute this to a lack of ready replacements.

³ This section builds on Lessing's (2018) conceptual framework.

A critical dimension of variation, we argue, concerns the “how” of criminal governance. Conventional wisdom portrays criminal governance as highly coercive, personalistic, and arbitrary. Dons, capos, and gang bosses are often charismatic authority figures, cultivating fearful reputations, and deploying violence strategically to assert dominance and reward loyalty. The PCC, we argue, has developed a style of criminal governance closer to Weber’s (1968) notion of rational-bureaucratic legitimacy.

One of our contributions is to broaden the observed empirical range of these dimensions. We analyze a rare body of systematic data on the administrative and disciplinary practices that support the PCC’s prison-based governance over a vast street-level network of sworn members and autonomous affiliates and the retail drug markets they operate in. Additional sources suggest that it adopts similar governance practices both within prison and over noncriminal civilian populations. That makes PCC governance, relative to US cases, more universal, covering diverse populations across large urban peripheries; more extensive, covering all of São Paulo state and expanding rapidly throughout Brazil; and, we suspect, less violent.

THE PCC

The PCC is the largest and most sophisticated of Brazil’s *facções criminosas*, or “criminal factions”—gangs born and based in prison that come to control “slum” territories and illicit markets beyond prison. The PCC initially modeled itself on the Comando Vermelho (CV) faction, which formed in the prisons of Brazil’s military dictatorship in the 1970s and dominated Rio de Janeiro’s favelas in the 1980s. The CV then fractured, fighting brutally against rivals and police ever since. In contrast, the PCC maintains hegemony over São Paulo’s prison system since the 1990s and its urban periphery since the 2000s. It also developed into a more complex organization than the CV, with distinctive governance practices and a deliberate policy of expansion beyond São Paulo to other Brazilian states and even neighboring countries. Since 2000, the rest of Brazil has become increasingly “factionalized,” with local “copycat” factions emerging in the wake of the PCC’s (and to a lesser extent, the CV’s) arrival.

Recalling social movements in some ways, Brazil’s factions often frame their organizing purpose as a “struggle” (*luta*) against violence and abuse, particularly by the state. This intermingling of normative and criminal goals began with the CV. Its founders entered prison as common criminals, but gleaned collectivist techniques from Cold War leftists they were unwisely housed with by the military dictatorship. Whereas the middle-class, predominantly white leftists eventually won amnesty by distinguishing themselves from common criminals, one CV founder explains, “Our path could only be the opposite: integration with the prison masses and the fight for liberty using our own resources” (Lima 1991, 43).⁴

⁴ All translations are the authors’.

The PCC’s founding was also catalyzed by state repression: the 1992 Carandiru prison massacre, in which São Paulo Military Police killed 111 mostly defenseless prisoners who had rioted to protest guard abuse. A group of survivors, transferred to a harsh maximum-security prison under Carandiru’s former warden, formed the PCC in 1993. Its founding statute states: “We must remain united and organized to avoid a similar or worse massacre than [Carandiru], a massacre that will never be forgotten in the conscience of Brazilian society... because we, the Comando, will change current carceral practices, inhumane, full of injustice, oppression, torture, and massacres.” The statute declared an alliance with the CV and adopted its motto “Peace, Justice, and Liberty.” The statute has been updated several times and further distilled into a guiding mission: “Peace among thieves and war against the state” (Biondi 2016).

As the CV did in Rio, the PCC violently eliminated its rivals in São Paulo’s prisons, imposing a governance regime that won the allegiance of inmates. It prohibits theft, rape, crack cocaine use, and unauthorized violence; provides limited welfare (food, medicine, and hygiene products) for the poorest inmates; ensures the supply of drugs, cell phones, and other contraband; effectively administers daily prison life; and bargains collectively for improvements in prison conditions, especially around family and conjugal visits. A disastrous official policy of transferring PCC leaders to other prisons (in hopes of neutralizing them) helped them dominate São Paulo’s prison system and establish cells throughout Brazil (Figure 1).

A 2002 internal coup led to a “democratizing” reform, symbolized by the addition of “Equality” to the “Peace, Liberty, and Justice” motto (Biondi 2016, 60). The new leader, alias “Marcola,” replaced the PCC’s personalistic, “pyramidal” structure with a flattened hierarchy of institutionalized posts called *responsas* (“responsibilities”), through which members rotate. Marcola deliberately minimized his own leadership role, and extended the PCC’s practice of open discussion to every level of decision-making, supported by norms against pulling rank (*igualdade* and *humildade*). In sworn testimony, one deposed PCC founder highlighted the radical nature of Marcola’s reform: “In our time there was no such circulating system of authority. We were the founders. We had the last word and everyone else... obeyed and did exactly what we ordered. There was nothing about consulting two, three, four, or twenty opinions” (in Marques 2010, 325).

In the wake of the 2002 coup, and as the PCC established hegemony within prison, it moved away from brutal executions of rivals and noncompliers, adopting a system of graduated, mostly nonviolent punishments (Dias and Salla 2013) similar to the one outside prison we document. It also institutionalized formal tribunals (*debates*) for serious violations in which juries of imprisoned leaders hear testimony from witnesses, victims, and even “counsel” (Biondi 2016; King and Valensia 2014), all anchored in a rich normative vocabulary emphasizing individual moral uprightness (*proceder*) and a collective “ethos of crime” (Marques 2010).

FIGURE 1. Geography of PCC Expansion in South America

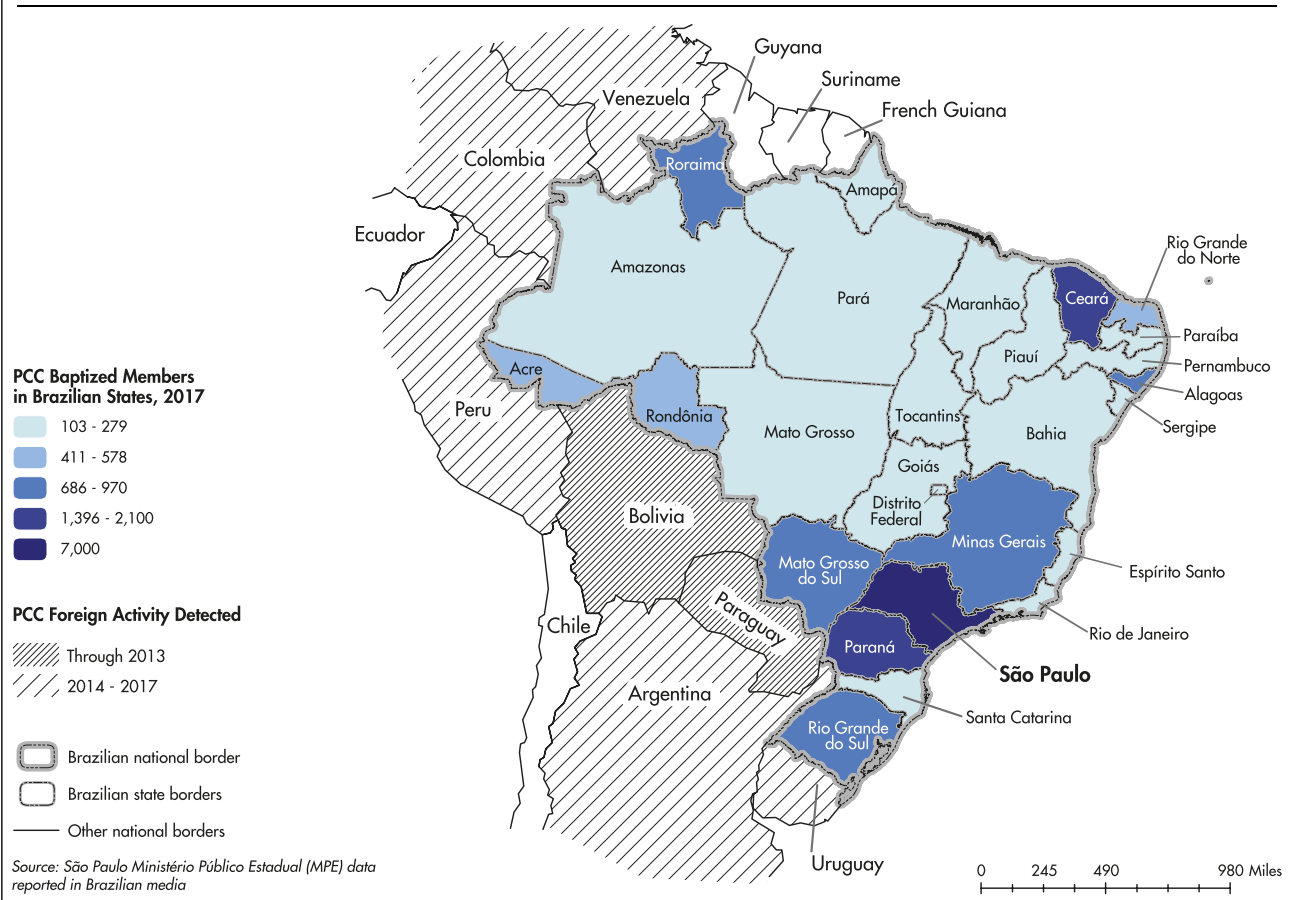
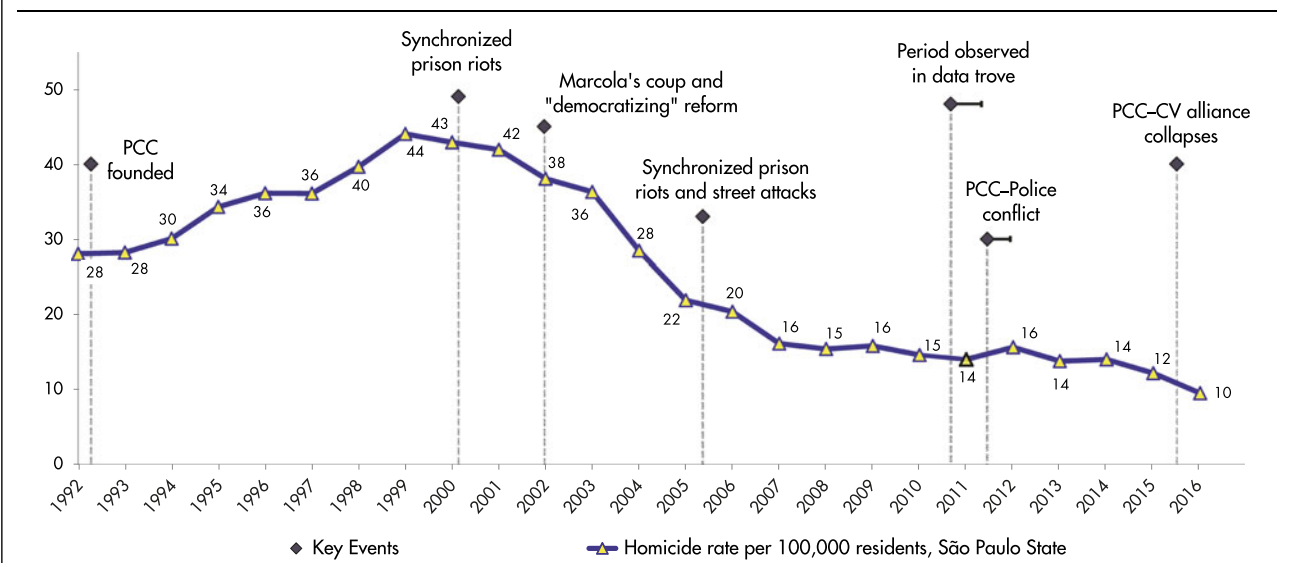


FIGURE 2. Timeline of the PCC



From 2000 on, the PCC extended both its criminal activity and governance practices from prison to the urban periphery of São Paulo and beyond. Whereas the

CV took militarized control over Rio's peripheral communities, granting its semi-autonomous bosses local monopolies on drug sales (Grillo 2013), the PCC

Downloaded from https://www.cambridge.org/core. Eden-Webster Library, on 22 Feb 2019 at 21:48:44, subject to the Cambridge Core terms of use, available at https://www.cambridge.org/core/terms. https://doi.org/10.1017/S0003055418000928

established its authority without hard territorial control, regulating criminal activity and supplying drugs to a wide network of members and affiliates.

The PCC claimed a monopoly not on drug retailing but on the legitimate use of force, banning killings except those sanctioned by its prison-based tribunals (Feltran 2018). Ethnographies of low-income neighborhoods in the early 2000s document the imposition of this “criminal code of conduct” (*lei do crime*)—sometimes violently resisted by incumbent criminal groups but often peacefully acceded to—and the subsequent drop in killings that were “no longer allowed” (e.g., Alves 2015; Feltran 2010; Hirata 2010). Biderman et al.’s (2018) difference-in-differences analysis confirms that PCC arrival in neighborhoods caused local reductions in homicides, contributing significantly to São Paulo’s massive crime drop since 2001 (Figure 2). The PCC’s tribunal system is now used throughout São Paulo’s periphery, including by noncriminals for everyday dispute resolution. It has a high bar for conviction and deters false accusations by sanctioning unsuccessful plaintiffs (Biondi 2016; Feltran 2010).

In 2006, the PCC used its power on the streets to launch a synchronized wave of attacks on São Paulo’s urban transportation, police, and banking infrastructure, while instigating simultaneous riots in over 90 prisons. The attacks brought São Paulo to a standstill for four days, ending only after officials met face-to-face with Marcola. Since 2006, São Paulo has seen relative calm, suggesting unspoken accords between authorities and the PCC; a brief outbreak of PCC–state conflict in 2012 was likely the result of a renegotiation of this tenuous “consensus” (Denyer Willis 2015). Meanwhile, the PCC’s early, haphazard spread gave way to a deliberate strategy of expansion to every corner of Brazil and even neighboring countries (Figure 1). This colonizing project has brought it into conflict with CV-allied local factions, contributing to the 2016 collapse of the PCC–CV alliance and the subsequent outbreak of street-level turf wars and prison massacres throughout Brazil, leaving hundreds dead (Paes Manso and Dias 2018).

DATA

A trove of internal PCC documents, our primary source, was given unsolicited to Denyer Willis by a São Paulo state bureaucrat involved in investigations of the PCC, during ethnographic research. We describe these data, address ethical and methodological concerns, and discuss the additional sources we use to increase reliability and provide context.

The document trove consists of computer files and scans of a handwritten notebook seized by police during the 2012 arrests of two PCC members who held the posts of bookkeeper (*livro*) and disciplinarian (*disciplina*). Almost all the documents relate to and were created by the administrative unit known as the “Interior,” covering most of São Paulo state outside Greater São Paulo city, and its seven regional subdivisions (*Regionais*). The documents refer overwhelmingly to the period September 2011–October 2012.

The trove contains over 500 files, including duplicates and dozens of .mp3 music files apparently intended to deceive investigators if seized. We focus on a subset of unique documents:

- 23 ledgers (*fechamentos*, literally “closings”) (19 weekly, 1 bi-weekly, and three monthly).
- 15 “X-Ray” documents (*raio X*) detailing individual drug consignments to members and affiliates.
- 5 “bad-debt reports” (*relatórios*) listing debts thought to be uncollectable because of individuals’ expulsion, disappearance, imprisonment, or death.
- 66 scanned pages from the disciplinarian’s handwritten notebook (henceforth “DHN”), mostly detailing individual punishments.
- A set of 98 Word files, each recording an individual punishment, seized together with DHN (henceforth “DWF”).
- 10 assorted Word and Excel documents, including intra-organizational communiqués (*salves*).

Such data raise important ethical and methodological concerns. Critical to both, our trove is almost certainly part of a larger cache of internal PCC documents amassed by the São Paulo Office of the Public Prosecutor (Ministério Público do Estado, MPE) during a major investigation that produced over 150 indictments—though few convictions—in 2013. We sought, unsuccessfully, to obtain the complete MPE cache. However, detailed accounts of these documents and the MPE’s analysis of them appear in the State Record of Judicial Proceedings (Diário Oficial de Justiça de São Paulo, DJSP); sample documents and summary findings were also published by journalists who were given partial access (e.g., Barbieri 2014; Godoy and Paes Manso 2014). These sources’ descriptions of the documents’ formatting and structure match those in our trove. Moreover, it is unlikely that state officials possessed our trove yet withheld it from the MPE. Hence, our supposition that the MPE’s cache includes our trove, and our confidence that our documents are genuine.

Our data contain personally identifiable information (PII) about individuals’ criminal association and drug trafficking; none of these individuals gave informed consent, raising serious ethical concerns. We obtained waivers of consent from our respective IRB boards⁵ based on our anonymization of results; our data security regime; and the low risk of additional harm to subjects and families from inadvertent leaks, since the data were previously vetted by state prosecutors.

The data also raise questions of reliability and bias. How do we know these documents are genuine and that they provide a representative picture of the PCC? We follow Mafia scholars’ advice both to seek external validation using “all available contextual evidence”—including official files and interviews with key informants—and to carry out “internal validity

⁵ See Protocol IRB17-1552 (Chicago).

control” by checking consistency across our documents and analyzing their metadata (Campana 2016, 5).

Both external and internal evidence suggests our trove was not forged. The MPE’s description (DJSP 2015) of its cache of documents closely resembles ours, including the “smokescreen” .mp3 files. Our trove’s internal consistency also makes a forgery by officials implausible; for example, the ledgers’ closing dates match their respective “last-modified” dates in the file metadata. The PCC *could* have fabricated or falsified the data to mislead officials, but then why would it include so much evidence of criminal activity, linked to hundreds of individual names? That the documents were seized in raids along with drugs and weapons casts further doubt on this possibility. As an additional check, we located media reports and official records validating numerous individual arrests and the single execution recorded in our data.

A key concern for reliability is the incompleteness of our data on two fronts. First, as is often true of seized internal documents (Gutiérrez Sanín 2008), the trove is a nonrandom sample; it covers less than a year in the life of one PCC administrative subunit, limiting our view geographically (only part of São Paulo state), structurally (only the street-level drug business, from the interior level downward), and temporally. This could lead to bias if the region, administrative practice, and/or period we observe are exceptional. We draw on secondary evidence suggesting that operations elsewhere are broadly similar. However, the PCC is a large and evolving organization. Without additional systematic data, we cannot be sure our findings apply beyond the time and places observed.

Second, some documents are clearly missing: at least one monthly ledger and several “X-Ray” documents. These gaps seem minor—there is enough redundancy across documents to fill in most missing information, or make educated guesses. However, we cannot be sure that an entire document type is missing. The most relevant possibility is that violent punishments were carried out but not documented together with the nonviolent punishments recorded by the disciplinarian. If true, our claim that the PCC relies almost exclusively on nonviolent punishment would be biased. However, the recording of a single execution—as well as many nonviolent punishments—in the bad-debt reports suggests that, had other executions occurred, we would have some record of them.

The trove’s incompleteness, and any resulting bias, is unlikely to be due to deliberate withholding of documents. First, Denyer Willis watched the bureaucrat copying the trove, and saw no effort to selectively include or exclude material. Second, following Robertson (2007, 790–91), we can consider the likely motives of the officials who provided sensitive data. Similar data were provided to Brazilian media around this time; the resulting articles emphasized the PCC’s size and brazenness, suggesting that if officials leaked selectively, they did so to foster a fearful image of the gang. Yet, our trove lacks data on the PCC’s core drug markets (Greater São Paulo), and points to less sensational qualities than officials hypothetically sought to convey. Our informant might have

sought to counteract prior leaks, but handing a carefully curated data trove to a then-graduate student seems like a suboptimal way to do so. In any case, the caveats above apply to any bias, whether accidental or deliberate.

A final reliability concern involves interpretation. Formatting, orthography, and accounting conventions are extremely erratic; nicknames, abbreviations, slang, and code words are ubiquitous and inconsistent. While both authors are fluent in Portuguese and familiar with gang tropes, the nature of the data called for thoughtful approaches to analysis and, at times, careful conjecture.

To “stay true” to the data, we conducted our analysis before turning to additional sources for triangulation and context. The MPE’s analysis and secondary sources largely corroborate our assessment of the PCC’s structure and interpretation of key terms. Two additional data sources come from the authors’ field research. The first is a smaller trove of seized PCC documents (henceforth S2) obtained by Denyer Willis via a different state source. Unlike our primary trove, S2 covers Greater São Paulo, but thinly; it covers a wider variety of PCC administrative subunits, including prison administration, but does not contain punishment records. Because of S2’s variegated but limited nature, we do not systematically analyze it. Rather, it corroborates some findings, and provides context about the PCC’s larger structure and division of labor. Second, we draw on Lessing’s ongoing study of the PCC’s expansion throughout Brazil, including interviews with incarcerated PCC members, state officials, and favela residents.⁶ This study excludes São Paulo state to focus on PCC expansion, so it cannot directly corroborate our data. However, it includes places like Paraná state that resemble São Paulo’s Interior in terms of PCC penetration and distance from São Paulo city.

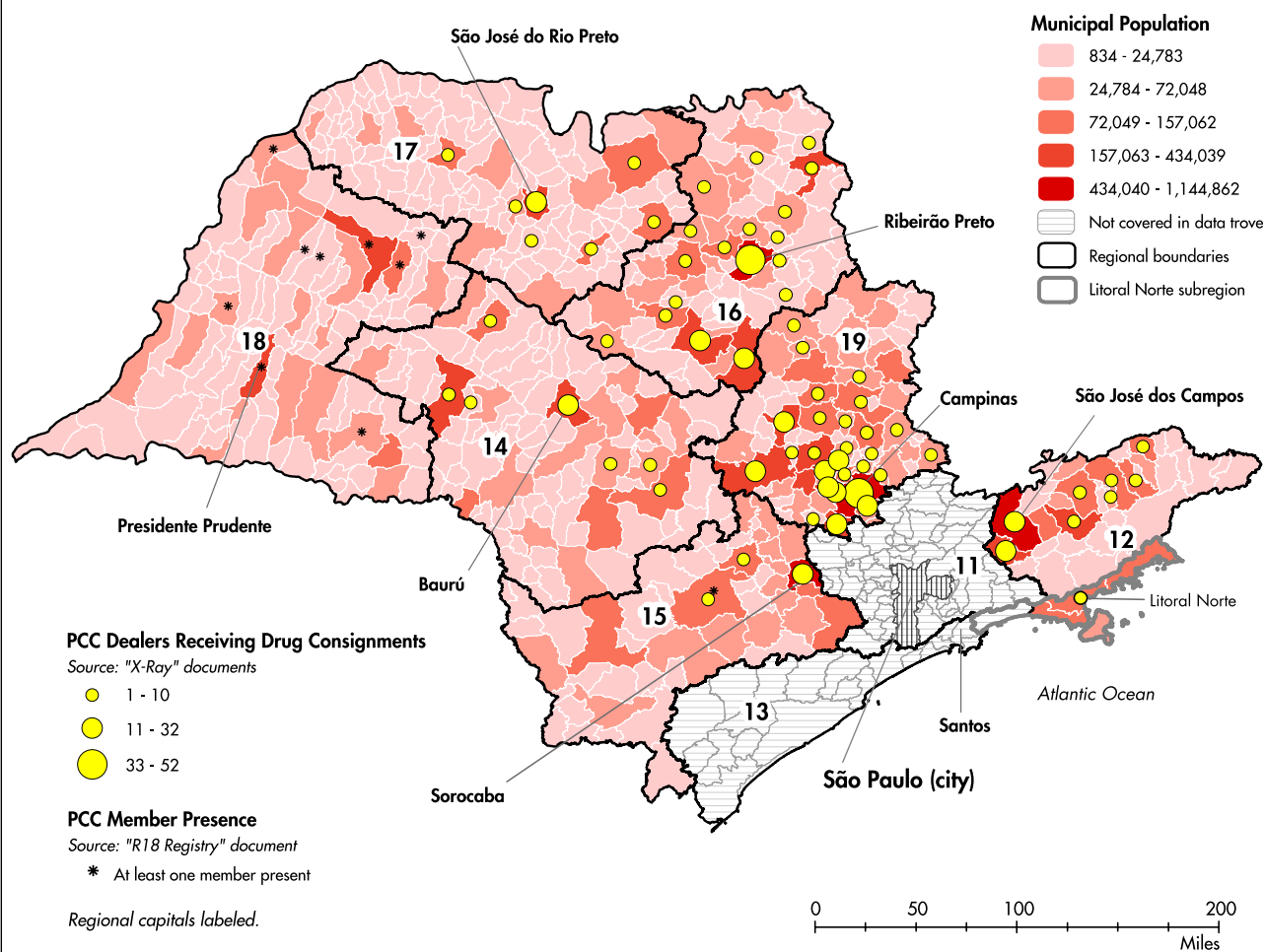
FINDINGS

Organizational Structure

The PCC has a sophisticated bureaucratic structure, made up of executive and managing committees (*sintonias*, literally “getting in tune”) for different functions, replicated across multiple administrative levels. Our data directly confirm the existence of at least three levels, Regionals, Interior, and at the very top, the *Sintonia Geral e Final* (which we call “Central Management”). Composed of the PCC’s ranking leaders, mostly housed together in a single prison, Central Management has final authority over the entire organization inside and outside prison. We observe this authority in the communiqué (*salve geral*) and “aid bank” documents discussed below.

Journalistic accounts and the MPE’s analysis (DJSP 2015) report that beneath Central Management lie four main branches, also coordinated by *sintonias*: the prison system (*sistema*), the “street” (*rua*), other states beyond São Paulo (*estados*), and a “support” branch (*apoio*)

⁶ This study received separate, full-board approval: Protocol IRB16-1521.

FIGURE 3. PCC Administrative Structure and Drug Trafficking in São Paulo's Interior

"Regionals" are defined and numbered by telephone area codes; the Interior administrative unit covers Regionals 12 and 14–19. Circles represent the number of unique dealers (members and affiliates) per municipality who received consignments in our individual-level data. No consignments went to Regional 18 in the period observed, though outstanding debt indicates prior consignments were made. A separate "R18 Registry" lists members there, indicated with stars.

overseeing numerous specialized *sintonias*.⁷ The "street" branch has eight geographic subdivisions: five for the capital city and one each for the São Paulo suburbs (*ABC*), the port city of Santos and coastal lowlands (*Baixada Santista*), and the remainder of the state (*Interior*).

The PCC's division of the Interior into Regional subunits follows São Paulo state's official telephone area codes (Figure 3). Our documents refer to the Interior as comprising Regionals 12 and 14–19. Beyond references to "Capital" as an administrative unit, our documents shed no light on how Regionals 11 (Greater São Paulo) and 13 (Baixada Santista) are administered. In the Interior, our data show, Regional-level administrators interact directly with individual dealers in over one hundred *quebradas* ("locales," mostly single

municipalities in our data); the Regionals answer to the Interior which in turn answers to Central Management, as in the MPE's analysis.

Replicated across this vertical structure is a horizontal division of labor into institutionalized job posts (*responsas*). At each level, there is a financial, disciplinary, and general manager or council, and other key posts such as bookkeeper (*livro*, "book") and messenger (*jato*, "jet"). Posts are reportedly unpaid (Barbieri 2014), and our documents contain no record of salaries. One-year bans on holding posts are common punishments, one reason why rotation is frequent.

Our data tell us little about how the PCC operates inside prison. It does confirm that the collection of members' dues (a monthly fee plus obligatory participation in a raffle) is separate from the administration of the street-level drug trade. Our primary trove covers only the latter, whereas S2 includes files from the dues unit, confirming oversight by Central Management.

⁷ Including membership dues (*cebola*), welfare assistance for members (*ajuda*), lawyers (*gravatas*, literally, "neckties"), and cigarettes (*cigarro*).

Drug Trafficking Operations

Consignment-Based Business Model

Roughly half the trove concerns the financial side of the PCC's drug operation, detailing an elaborate consignment system for retailing crack, cocaine, and marijuana. Consignment differs from two more commonly observed models of drug retailing: "freelance" operations where individual dealers purchase their supplies up front from wholesalers, and "franchise-model" firms, whose owners pay dealers fixed salaries or commissions and claim residual profits (Johnson, Hamid, and Sanabria 1991). Each model has strengths and weaknesses. Levitt and Venkatesh (2000) report that the takeover of a Chicago drug market from a gang employing a freelance model by a more sophisticated gang using a franchise model led to a tripling of profits; they attribute this to the severe credit constraints endemic to freelance systems. Hagedorn (1994) also finds centralized, business-model retailing operations to be highly profitable, but more visible and hence vulnerable to law enforcement, and less adaptable to changing circumstances.

Similar dynamics prevailed in many Brazilian cities, including São Paulo prior to the PCC's widespread involvement, where the concentration of retail drug markets varied as smaller firms expanded into freelancers' territory while larger firms fell prey to repression and succession battles (Lessing 2008). For decades the key exception was Rio's CV, which has always been organized on the franchise model, as a confederation of bosses running their own firms, with hierarchies, salaried or commission-based posts, and a local monopoly within his turf (Grillo 2013; Misse 2011). While the CV has survived and at times proven quite lucrative, it has suffered both intense militarized state repression and predation by corrupt police, losing considerable ground since 2008.

The PCC's consignment model constitutes a middle path, alleviating the credit constraints of freelance operations by extending microcredit to dealers, while avoiding the risks and costs of maintaining local monopolies over retail turf associated with hierarchical models.⁸ The consignment model also provides money-making opportunities for members and affiliates while isolating these from the PCC's collective (and collectivist) endeavors. On the other hand, it creates agency problems, requiring mechanisms to track dealers' debts and induce timely repayment.

Profits Fund Collective Goods.

How profitable is the PCC's drug business? The timing of drug consigning and repayment coupled with the relatively short period we observe complicates estimation. Nonetheless, the nonpayment rate on

⁸ Our primary trove indicates that the Interior operated on a purely consignment basis; S2 shows that in Greater São Paulo, the PCC complements consignment with direct operation of drug retailing points (*bicas*). Conversely, Misse (2011) reported that Rio's CV operated on a consignment basis in the 1990s, while Grillo (2013, 83) found that the CV "no longer" employed consignment.

consignment debt appears to be less than the Interior's markup, suggesting the business is basically profitable. In terms of cash flow, total revenues equal total outlays, with no profits explicitly reported. However, reported expenses include costs of a major transportation network for incarcerated members' families and other welfare benefits. Overall, we conclude that the business made enough "profit" to finance this network and replenish its drug inventory. We turn to the details.

In our data, crack is by far the dominant economic activity (accounting for 92 percent of revenue), followed by powder cocaine, with marijuana a distant third. The Interior makes wholesale purchases of drugs (100–500 kg in our sample) from unspecified "suppliers." Drugs are disbursed among the Regionals in lots of 5–103 kg and thence consigned (at a markup) to individual dealers. Dealers can be baptized PCC members (*irmãos*, "brothers") or unbaptized "affiliates" (*companheiros*) and can obtain consignments of virtually any size, for which they incur debt at a fixed per-kilo rate of BRL 8,500 (USD 4,552) for crack and BRL 5,000 (USD 2,678) for cocaine.⁹ No marijuana consignments occur in the period we observe, although small outstanding debts indicate that previous consignments occurred.

The Interior purchases crack from its supplier at a flat rate of BRL 6,500/kg, retaining a BRL 2,000/kg (30.7 percent) markup. Our data contain one wholesale marijuana purchase of 500 kg at BRL 700/kg but no consignments to dealers, and consignments of cocaine at BRL 5,000/kg but no wholesale purchases, so we cannot calculate either markup. Wholesale purchases are paid in installments; for example, a note in the December 2011 ledger (Figure 4) discusses the purchase of 150 kg of crack at BRL 6,500/kg (for a total of BRL 975,000), stating that two payments have already been made and that BRL 63,576.50 "remains to be paid to the supplier." The same note details the disbursement of 150 kg of crack to the Regionals, along with their corresponding increases in the Interior's outstanding debt at the BRL 8,500/kg rate (totaling BRL 1,275,000).

The fact that the Interior makes bulk purchases (partially) on credit suggests that the "supplier" could be PCC Central Management, essentially consigning large shipments to the Interior. However, in contrast to Regionals' debt to the Interior, the documents never mention an Interior debt to Central Management; rather, outstanding debts to suppliers are noted haphazardly in text boxes pasted into ledger spreadsheets, and installment payments are recorded as business expenses. Moreover, the marijuana wholesale purchase is described as "for the Capital" (hence, its disbursement does not appear in our data) while the 120 kg of powder cocaine the Interior had on hand in December was "being disbursed, with 30 to the Capital and 90 [kg] to the Interior." The only other recorded financial interactions between the Interior and the rest of the organization are two business expenses totaling BRL

⁹ This price differential suggests that powder cocaine is highly diluted; a note repeated in several weekly ledgers confirms this: "the 20 [kg] of pure [cocaine] in our stockpile has been cut into 120 kg of cocaine for retail sale."

FIGURE 4. Typical Ledger Note Detailing Bulk Drug Purchase by Interior From Unidentified “Supplier” and Marked-Up Disbursements to Regionals

Translation	Original
<p>NOTE: With respect to the purchase of 150 boxes [i.e. kilos] of PT [i.e. crack] of 12/2011, 6,500.00 was paid for each box for a total of 975,000, but we already made a payment of 655,703.50 date 12/20/2011 and another for 255,720.00 date 12/26/2011 totaling 911,423.50 already paid to the supplier of PT remaining to be paid 63,576.50 of PT to the supplier.</p> <p>NOTE: In this month’s ledger there were added 90 boxes [i.e. kilos] of ML [i.e. cocaine] with a value of 5,000.00 each box with a total value of 450,000.00 being added to the Interior’s ML debt, and also added were 150 boxes of PT with a value of 8,500.00 each box for a total value of 1,275,000.00 being added to the Interior’s PT debt. And in the regionals the following values were added:</p> <p>Regional 019: 225,000.00 → 45 box of ML Regional 016: 100,000.00 → 20 box of ML Regional: 015: 25,000.00 → 05 box of ML Regional 014: 60,000.00 → 12 box of ML Regional 012: 40,000.00 → 08 box of ML Regional 019: 595,000.00 → 70 box of PT Regional 017: 85,000.00 → 10 boxes of PT Regional 016: 255,000.00 → 30 box of PT Regional: 015: 85,000.00 → 10 box of PT Regional 014: 127,500.00 → 15 box of PT Regional 012: 127,500.00 → 15 box of PT</p>	<p>OBS: Referente a compra de 150 caixas de PT do mes 12/2011 foi pago 6.500,00 cada caixa num valor total de 975.000,00, mais já fizemos um arremesso de 655.703,50 data 20/12/2011 e outro de 255.720,00 data 26/12/2011 totalizando 911.423,50 já pago para o fornecedor de PT restando para pagar 63.576,50 de PT ao fornecedor.</p> <p>OBS: Nesse fechamento foi acrescentado 90 caixas de ML no valor de 5.000,00 cada caixa num valor total de 450,000,00 sendo acrescentado no debito de ML do interior, tambem foi acrescentado 150 caixas de PT no valor de 8.500,00 cada caixa num valor total de 1.275.000,00 sendo acrescentado no debito de PT do interior. E nas regionais foram acrescentados os seguintes valores abaixo:</p> <p>Regional 019: 225.000,00 → 45 caixa de ML Regional 016: 100.000,00 → 20 caixa de ML Regional: 015: 25.000,00 → 05 caixa de ML Regional 014: 60.000,00 → 12 caixa de ML Regional 012: 40.000,00 → 08 caixa de ML Regional 019: 595.000,00 → 70 caixa de PT Regional 017: 85.000,00 → 10 caixas de PT Regional 016: 255.000,00 → 30 caixa de PT Regional: 015: 85.000,00 → 10 caixa de PT Regional 014: 127.500,00 → 15 caixa de PT Regional 012: 127.500,00 → 15 caixa de PT</p>

Note: Original formatting and orthography maintained.

57,000 to Central Management for a “project” (*progresso*) in March.¹⁰ Many potential financial and logistical arrangements between the Interior, the Capital, and Central Management are consistent with these limited observations.

There is significant regional variation in trafficking volume. Regional 19, containing Campinas, the second largest city in the state, was responsible for 47 percent of incoming revenue, while the sparsely populated Regional 18 received no new consignments and made a single small debt repayment. There is also temporal variation, with the largest disbursements in late November 2011 and February 2012, and none in March or the first three weeks of April (Figure 5). Seasonal variation is a plausible explanation: The end of November marks the beginning of summer in Brazil, and the lead-up to Christmas vacation. Summer continues through Carnival, which fell on February 17–21 in 2012, when drug consumption is probably very high.

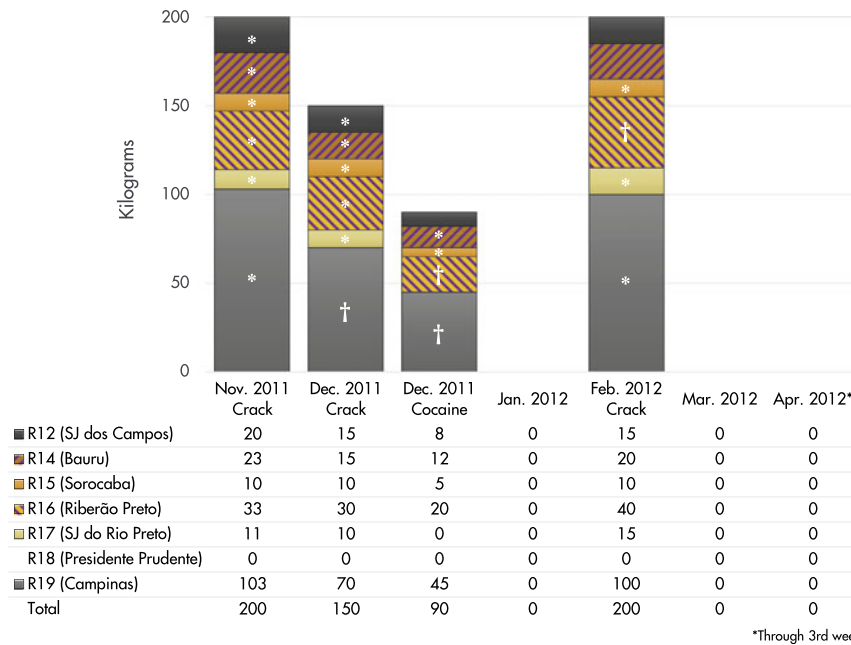
¹⁰ *Progresso* usually means “the drug business,” but can refer to other collective projects, such as a planned prison break or bank robbery (Biondi 2016, 170).

Work rhythms resume in March, and it is possible that retail drug markets contract accordingly.

We do not observe dealers’ income from drug sales, nor the markup they charge consumers. We do, however, observe the repayment of consignments by the Regionals to the Interior, which is quite variable likely due to the vagaries of retail-level drug sales and the fates of individual dealers. Figure 6 shows the Interior’s outstanding debt (accounts receivable) and revenues from debt repayments over the period observed. Overall, the Interior took in BRL 3,938,605 and made BRL 3,425,000 in new consignments; an additional BRL 502,647.50 of debt disappears from the books, due, we conjecture, to a write-off of uncollectable debt.

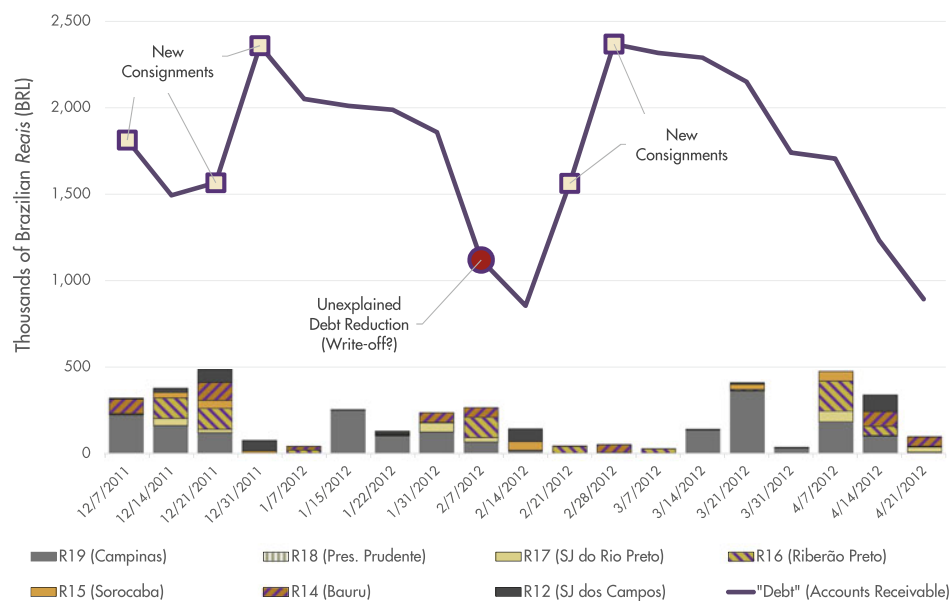
Is the PCC’s drug business profitable? The Interior stood to make BRL 2000/kg on the 550 kg it consigned; assuming the same markup (30.7 percent) for cocaine and that the 19 weeks we observe were representative, an upper-bound estimate for yearly profits would be BRL 3,297,895 (USD 1,766,319). However, consignment debts are not always repaid in a timely fashion, or at all.

FIGURE 5. Drug Disbursements by Regional



Symbols indicate disbursements for which the X-Ray documents provide complete (*) or partial (†) data on individual consignments.

FIGURE 6. Interior’s Total Outstanding Debt (Accounts Receivable) and Debt Repayments by Regional



A large debt reduction in excess of repayments occurs between the January 31 and February 7 weekly ledgers; the January monthly ledger that should explain it is missing, and no other such reduction occurs in the data. We conjecture it was a one-time write-off authorized by Central Management.

We estimate a nonrepayment rate of 14–27 percent based on an analysis of “*relatório*” (report) documents. These running tallies of overdue debts among dealers who have gone missing, died, or been arrested or

expelled are not consistently organized or dated, and do not tell us the share of loans repaid on-time. However, two reports list “total overdue [debt],” “total current [debt]” (i.e., recently issued consignments) and “total

FIGURE 7. Estimated Non-payment Rates, Based on Bad-Debt Reports' Totals for Overdue and Current Debt

	Document name:	relatorio (3).doc	relatorio (2°).doc
	Last-modified date:	8/23/2012	9/27/2012
Translation	Original entry		
Value to be received by the Interior.	Valor a receber no interior.		
Overdue crack:	PT atrasado:	247.107,85	248.452,50
Overdue cocaine:	MI atrasado:	126.756,50	150.567,00
Overdue marijuana:	Bob atrasado:	9.025,00	9.025,00
Current crack:	PT atual:	1.396.390,00	1.099.438,00
Total overdue:	Valor total atrasado:	382.889,35	408.044,50
Total current:	Valor total atual:	1.396.390,00	1.099.438,00
Total debt:	Valor total do debito:	1.779.279,35	1.507.482,50
Authors' estimate of non-payment rate		21,5%	27,1%
Debt of the interior.	Debito do interior		
Overdue crack:	PT atrasado:	166.607,35	144.473,35
Overdue cocaine:	ML atrasado:	51.062,00	51.062,00
Overdue marijuana:	Bob atrasado:	13.169,00	13.169,00
Current crack:	PT atual:	1.396.390,00	1.099.438,00
Total debt	Valor total do debito	1.627.228,35	1.308.142,35
Authors' estimate of non-payment rate		14,2%	16,0%

Besides our estimates, labels, and translations (shaded), the original formatting is maintained.

debt" (the sum of overdue and current debt) for the Interior, allowing us to estimate the nonpayment rate as: total overdue/total debt. This estimate is biased, since changes in current debt (new accounts receivable) affect it independently of the repayment rate on prior debts. Moreover, these line items occur twice in each report, consecutively, under different headings, with different values for "overdue debt." Figure 7 illustrates this, combining the two reports, maintaining the original terms and formatting, and adding translations and our nonpayment rate estimates. We suspect that the bottom entries (*débito do Interior*) exclude debts considered irrecoverable, but the debt for marijuana *increases* between the top and bottom entries (the Regional subtotals show similar increases for crack and cocaine). Regardless, most of the estimates fall below the 23.5 percent nonpayment rate at which the PCC would break even on its 30.7 percent markup on crack. Since many of these overdue debts had been on the books for over a year, this seems like a manageable level of nonpayment.

The Interior appears not to owe its overdue debts as accounts payable to Central Management, but it is

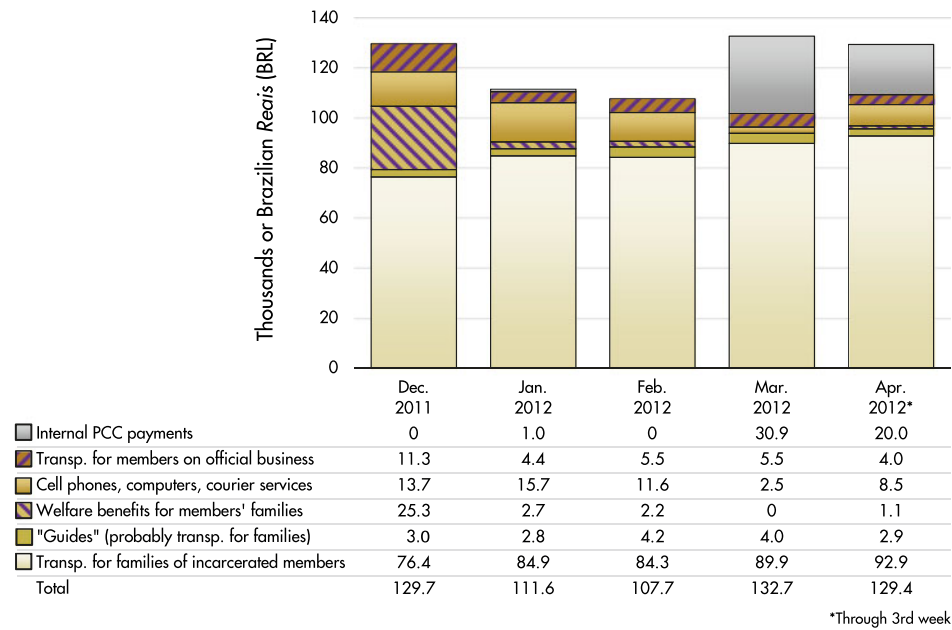
under pressure to balance its books from Central Management, which can cancel debts it deems uncollectible, as this note in the earliest bad-debt report indicates:

Report of debts among the expelled and of unknown whereabouts who have not settled their debts until today whose values are just bulking up the regional spreadsheets and making it difficult to balance our books, and we are forwarding these names to Central Management, to be analyzed case by case and together with us from the Interior begin to remove from our ledgers this backlog of values that we are not managing to collect.¹¹

Our trove also contains a *salve geral* (a communiqué from Central Management to all members) dated (and last modified) January 23, 2012:

Central Management hereby communicates, by means of this memo, to all those with outstanding debts with the drug

¹¹ Grammatical errors maintained from the original.

FIGURE 8. “Operating Expenses” (*Saida de Dinheiro*) in Monthly Ledgers

This heading includes welfare benefits for members' families, but excludes wholesale drug purchases.

trade and finance sector to take responsibility and pay off your debts.

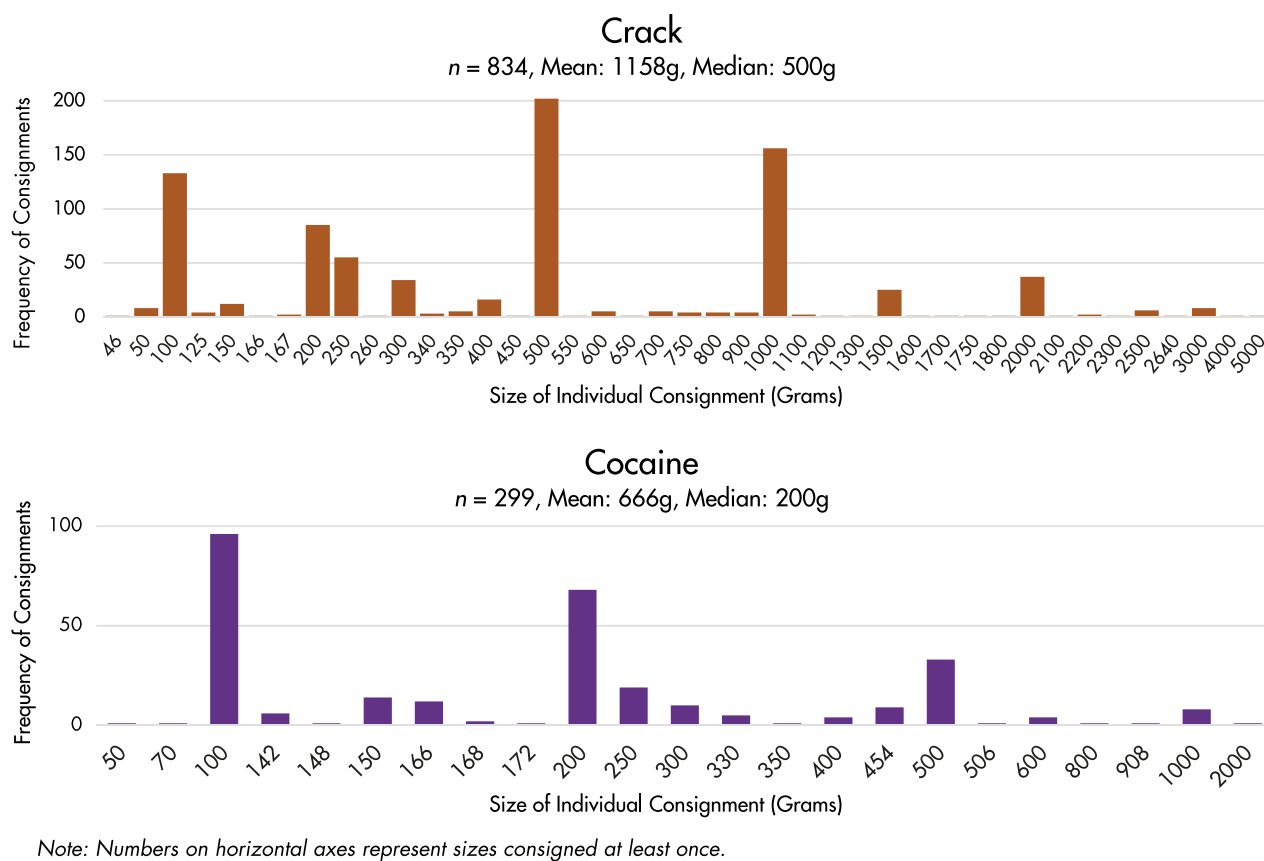
From the date February 20, 2012, those who have not zeroed their overdue debts will be communicated within the central disciplinary sector (*nossa disciplina*). It will not be necessary for the regional disciplinarian to personally meet each one to let them know, since from now on [if one's allotted time for repayment] has expired he is automatically suspended[.] Everyone knows their responsibility, and defaulting on debts sets back all of the family's [i.e., PCC's] activities.

Around the time of this *salve*, we observe a permanent and unexplained reduction in the Regionals' debt to the Interior by BRL 502,647.50, about one-third of the total outstanding. We conjecture that this was a one-time write-off authorized by Central Management, in conjunction with the disciplinary reform described in the *salve*. We note, however, that no reduction occurred in the Interior's accounts-payable debt to its wholesale "supplier" (which may or may not be Central Management), which received payment in full for the wholesale purchases we observe.

No "profits" appear in the Interior's cash flows, recorded as revenues and expenses (*entrada e saida de dinheiro*), but significant expenditures on collective benefits for members' families appear as "expenses." In these ledger entries, revenue consists of dealers' debt repayments, while expenses are divided into wholesale drug purchases—about 90 percent of outflows—and operating expenses that account for the rest. Critically, operating expenses are dominated by expenditures on

an elaborate network of vans and busses for transporting families of incarcerated members to far-flung prisons for visitation (Figure 8). These expenditures total about BRL 85,000/month (USD 45,525), while traditional business expenses such as cell phones and courier services account for only about BRL 20,000. The remaining cash on hand, anywhere from BRL 500,000–1,000,000, goes toward bulk drug purchases, often paying down the Interior's debt to its supplier for prior shipments.

Thus, although the Interior records no profits per se, it clearly directs revenue from its drug business toward collective benefits for members. This collectivist approach is echoed in another document proposing Regional "aid banks" that provide loans of guns and money to members recently released from prison, to help them "get on their feet." Each bank should have on hand BRL 500,000 (USD 267,800) and a standing inventory of twenty automatic rifles, fifteen sub-machine guns, fifty pistols, thirty grenades, and twenty revolvers. Gun loans must meet a "principle of proportionality" in which "nobody requests a machine gun to rob a car." In return, the PCC asks only for "increased commitment to assume existing responsibilities." The proposal, directed at Central Management, exemplifies how collectivist norms infuse the PCC's rhetoric and praxis: By establishing these banks, the proposers write, "The family puts the theory of equality into practice, with criminals aiding criminals, recovering the spirit of struggle surrounding our organization." A note from Central Management approving the project suggests this appeal was successful.

FIGURE 9. Histograms of Drug Consignments to Individual Dealers by Size

Competitive Retail Drug Markets.

The “X-Ray” documents shed light on the structure of drug markets in the Interior. Each records individual consignments to dealers, organized by municipality, for a single drug disbursement (crack or cocaine in our trove). These are compiled first by Regional bookkeepers, then merged into a master document for the Interior. We have the complete master document for the November 2011 crack disbursement; in the other four cases, we are missing X-Ray documents for some Regionals (Figure 5).

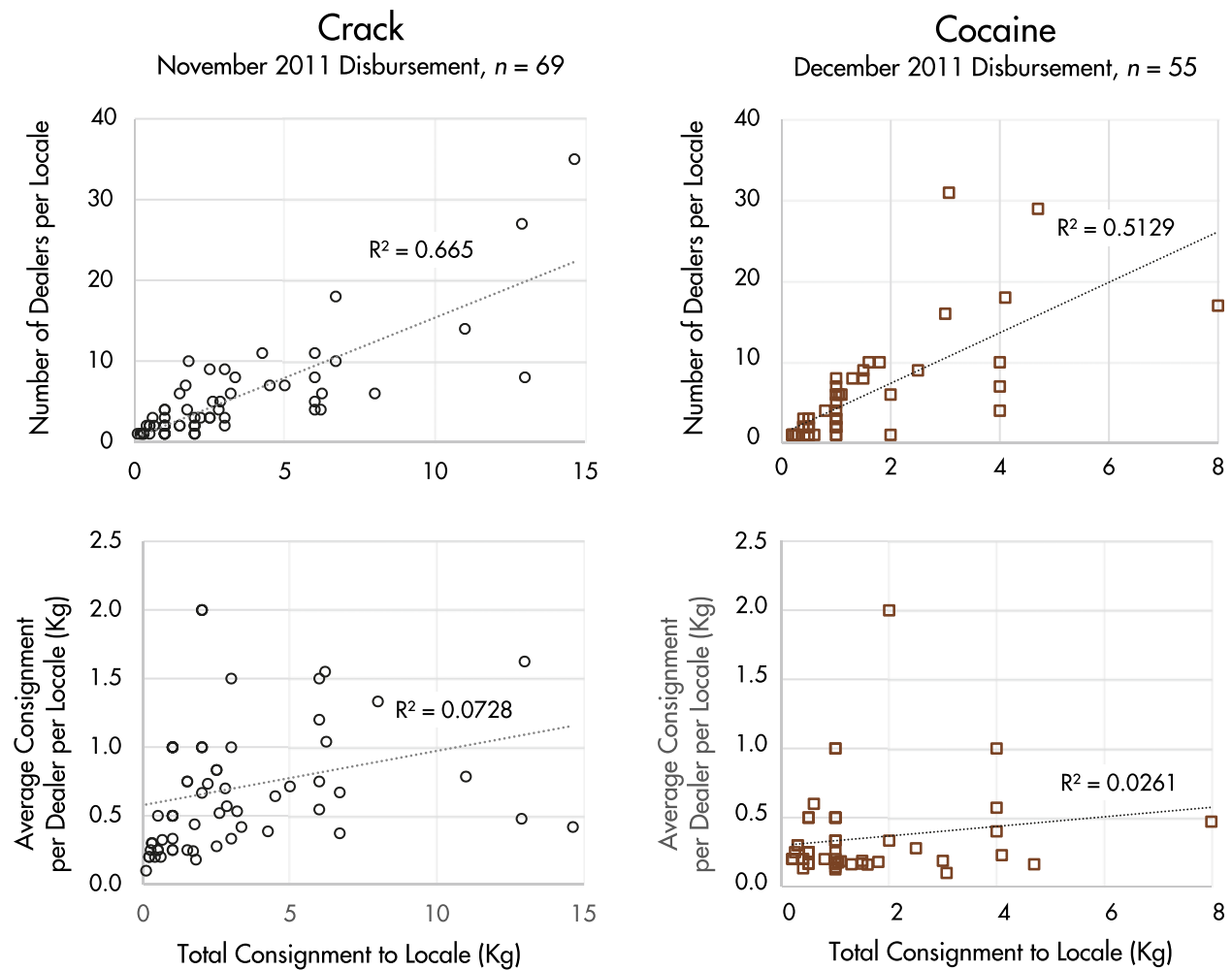
Pooling the available X-Ray documents, we observe 1,134 consignments to about 500 individual dealers¹² operating in 89 municipalities (Figure 3). These are conservative estimates, since there are likely active dealers in other municipalities who did not receive consignments in these specific disbursements. In particular, Regional 18 received no consignments but carried debts, indicating that it *sometimes* receives consignments. Including the municipalities mentioned in a Regional 18 membership registry (the only such

registry in our trove) and the “bad-debt reports” yields 117 municipalities with PCC activity. As Figure 3 reveals, PCC activity is concentrated in the most populous municipalities, encompassing roughly 14 million people, or about 69 percent of the Interior’s population.

The median and modal consignments for crack were 500 g, with 100 g, 200 g, and 1 kg consignments also quite common. However, many odd-sized consignments (e.g., 46 g or 2640 g) occur, suggesting that dealers can request any size consignment they wish. Cocaine saw smaller consignments overall, though this could be due to the limited sample size (one disbursement). Figure 9 plots histograms; numbers on the horizontal axes represent sizes with at least one observation.

Retail drug markets appear to be relatively competitive. We analyze the crack disbursement for which we have complete consignment-level data (November 2011), as well as the single cocaine disbursement (December 2011). Figure 10 shows that for both drugs, the number of active dealers in each of municipality is correlated with the total amount consigned to that city so that larger markets have more dealers operating. Consequently, the degree of concentration (i.e., the mean consignment per dealer operating in each locale) is essentially uncorrelated with the total size of consignments to that locale. In fact, the “biggest fish” seem to operate in smaller ponds. These data corroborate

¹² Dealers are identified by nickname, and some common nicknames (e.g., “Fatso”) appear in multiple, often distant municipalities within single disbursements. Assuming one dealer per nickname across municipalities yields 488 dealers; assuming one dealer per nickname per municipality yields 632 dealers.

FIGURE 10. Number and Average “Size” of Dealers per Municipality

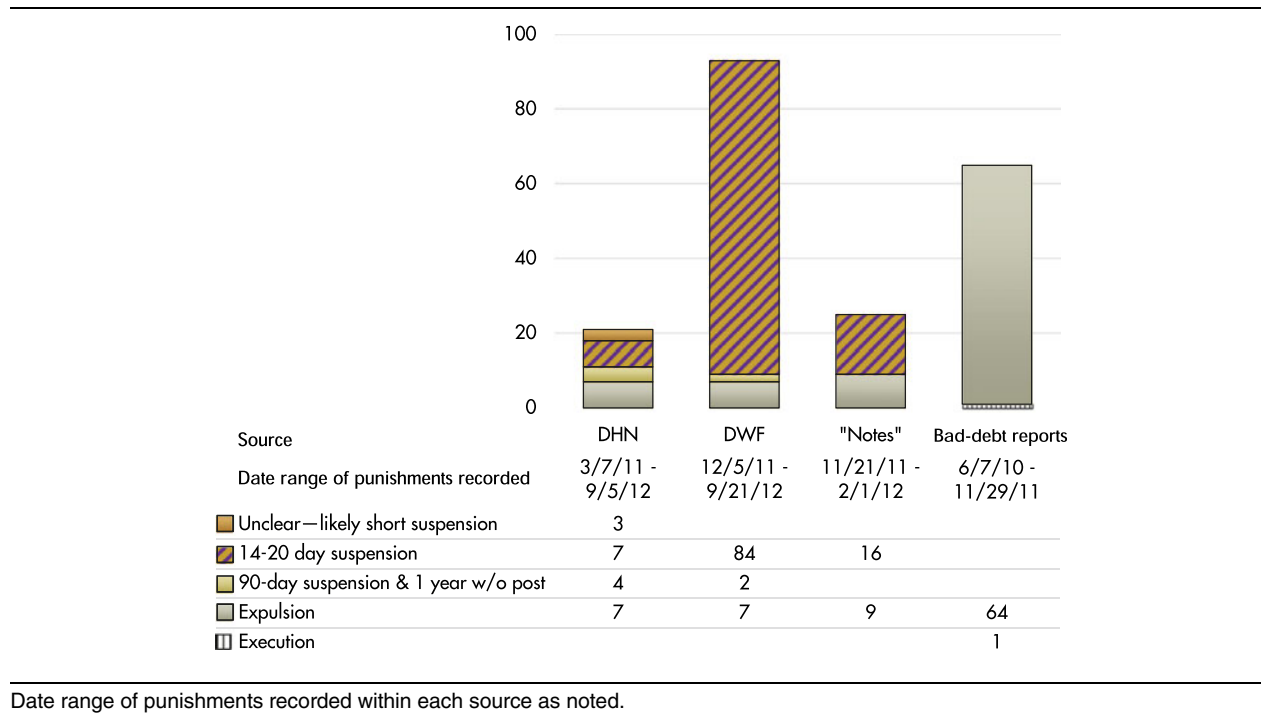
Points represent locales (*quebradas*, in our sample almost all municipalities) that received drug consignments in the respective disbursements. The top panels show how many dealers received consignments in each municipality; the bottom panels show the average consignment per dealer in each municipality.

Feltran's (2018) claim that the PCC does not attempt to monopolize retail trade.

Discipline and Punishment

Internal discipline is a challenge for all organizations, but it is a critical one for the PCC's drug operation because of dealers' temptation to default. While we might imagine repayment, and gang rules in general, being enforced at gunpoint, there are reasons to avoid extreme punishment. Dealers face great uncertainty and risk, and outcomes are not perfectly correlated with effort. Under those circumstances, overly harsh punishments can encourage exit. More broadly, the PCC's normative mission centers on *proceder*, or proper criminal comportment (Biondi 2016; Marques 2010); its moral authority could be undercut if punishment were seen as arbitrary, disproportionate, or vindictive.

We present two main descriptive findings. First, the PCC, at least in the Interior during the period observed, relies overwhelmingly on suspensions and expulsions. Of the 203 individual punishments documented in our trove, only one—an execution—involved physical violence. Second, the PCC maintains a centralized, queryable system of “criminal criminal records” of members' and affiliates' history, including past infractions. Punishment is highly bureaucratized, involving significant, standardized paperwork and numerous mechanisms for administrative review. Though strict and meticulous, the PCC is also clearly concerned with fairness and “hearing out” suspects of wrongdoing. While we lack systematic data for other Brazilian factions, the contrast with Misse's description of Rio's CV is startling: “Non-repayment [of debts] is interpreted as fraud, theft, or error, and the debtor on the first repeat offense is killed in a public ritual of cruelty” (2011, 237).

FIGURE 11. Punishments Recorded in Disciplinarian's Handwritten Notebook (DHN) and Word Files (DWF), "Notes" File, and Bad-Debt Reports

Punishment is Mild

Punishment data come from several different sources within our documents. The most direct evidence comes from the disciplinarian's handwritten notebook (DHN) and Word files (DWF). DHN contains 21 standardized punishment records, blank templates, and instructions for filling them in, as well as other notes and records. DWF contains 100 Word files: 95 unique, individual punishment records, three duplicate records, and 2 punishment-record templates. Because DWF does not duplicate any records from DHN, while both cover punishments that occurred from late 2011 through September 2012, we suspect the disciplinarian was still digitizing the records in DHN when he was arrested in early October. Another file, "Anotações do Caderno Parte 1," henceforth "Notes," contains 25 additional unique records from November 2011 through January 2012. These three sources provide the best measure of the relative proportions of different punishments meted out over time. Additionally, the bad-debt reports (*relatórios*) mention punishments in the context of overdue debts belonging to members who have been expelled or killed; as such, they capture only a subset of total expulsions and executions, and exclude suspensions entirely.

We coded the punishments recorded in these four sources by type (Figure 11). The overwhelming majority of punishments are 15–20 day suspensions, but a significant number of expulsions also occurred. This is particularly true of the period covered by the bad-debt reports.

No executions appear among the DHN, DWF, and "Notes" files; we suspect that none occurred during the periods covered, but cannot rule out the possibility that executions occurred but were not recorded alongside other punishments. However, the bad-debt reports *do* document an execution, strongly suggesting that the PCC does not systematically hide violent punishments. Moreover, this likely represents *all* cases of executed debtors, because these reports detail uncollectable debts to be written off by Central Management, and, as the authors note, "we know that the debts of killed members are automatically written off." Executions of members *without* debts would not be reported here, but we suspect such executions are rare, since theft from the organization is a prime motivation for execution. More broadly, the entire trove evinces the PCC's fervor for recordkeeping, suggesting that, like many regimes, it keeps careful track of even its most repressive actions. In any case, only one out of 203 punishments in our data corresponded to an execution.

Most punishments were the result of the PCC's automatic, graded punishment system for overdue drug debt, laid out in this template from DHN.

Members: first suspension is 15 days. If they pay, they're back, if they don't pay they're out of the Comando.

Second suspension: 90 days automatically and 15 more days to pay up. If they don't pay, they're out.

FIGURE 12. “Criminal Criminal Records”: Data Fields in Punishment-Record Templates

Data field	Literal translation	Explanatory note
<i>Nome</i>	Name	
<i>Matrícula</i>	Member number	Assigned by government upon entering prison system, used by PCC as ID number.
<i>Vulgo</i>	Nickname	
<i>Quebrada</i>	Locale	In the Interior, <i>quebradas</i> mostly correspond to municipalities; in Greater São Paulo <i>quebradas</i> can refer to neighborhoods.
<i>Três últimas</i>	Last three [places imprisoned]	
<i>Punição anterior</i>	Previous punishment	Date, location, and motive also recorded where relevant.
<i>Linha Vermelha</i>	Hotline	Cell phone number of PCC member with knowledge/ records of the subject.
<i>Três últimas responsa</i>	Last three posts	Unpaid “positions of responsibility”, like bookkeeper, disciplinarian, or manager.
<i>Data batismo</i>	Date of Baptism	Baptisms require sponsoring members
<i>Local batismo</i>	Place of Baptism	(“godfathers”), usually three. Godfathers’ home locales are also recorded.
<i>Padrinho</i>	Godfather	
<i>Data de saída</i>	Date of exit [from prison]	

Third suspension: Automatic Expulsion. And they enter an “affiliate’s twenty-day suspension.”

“Affiliates” are immediately subject to twenty-day suspensions when they do not pay.

The January 2012 *salve* quoted above suggests that this automatic-suspension policy was new, although numerous first suspensions occur in the months prior as well.

Expulsion usually comes as an automatic response to nonpayment of debts, but we also observe expulsions for being “out of touch” (*falta de sintonia*), and for lack of “vision,” “responsibility,” and “transparency.” Expulsion is considered a major punishment and bureaucratic safeguards are in place to ensure that it is not wrongfully applied, as a note in DHN explains:

All Expulsions must be sent through a disciplinarian or general manager. Never record an Expulsion reported by a member who does not hold a post (*responsa*) nor without the knowledge of Central Management or of the Regional. ... We bookkeepers should never record an Expulsion without first having the Summary (*Resumo*) from Central Management.

Multiple references to the *Resumo*, in our trove and interviews, indicate that it is a mechanism by which Central Management both authorizes individual punishments and conveys the relevant information to branch officials, including bookkeepers. We now explore the PCC’s information-sharing mechanisms.

Centralized “Criminal Criminal Records” Support Voluntary Reporting

The very production and centralization of the punishment records in our trove constitutes an important empirical observation. All large organizations face the challenge of keeping track of members’ performance; for criminal organizations the challenge is exacerbated, since records can be seized by authorities and used as evidence. Many gangs maintain, at best, a membership roster, with reputation based on collective memory, word of mouth, and codes of learned behavior (Gambetta 2009). This can become problematic in large, dispersed organizations.

The PCC, in contrast, has developed a system of uniform personnel records consisting of standardized data fields covering individuals’ history with the organization; these (empty) fields compose the punishment-record templates in our trove (Figure 12). These same data fields appear in other PCC documents, particularly when a member or affiliate comes under scrutiny. Because these data “follow” individuals, and because they include previous punishments (*punição anterior*)¹³ and the bureaucratic processes that

¹³ The recurrence of “punição” (punishment) throughout our documents contrasts with Biondi’s claim that “[PCC] Brothers do not use the term ‘punishment’ [punição],” preferring “consequences” as a way to “turn sanctions into the expected, or naturalized, results of one’s own actions” (2016, 80). This may reflect the PCC’s linguistic norms evolving over time, a process Biondi observes and discusses in later work (2018).

FIGURE 13. Example of “Criminal Criminal Record” Data Reappearing in a Bad-Debt Report

Translation	Original
Regional 019	Regional 019
Expelled [members]. --	Excluído. --
Name: ■■■■■■	Nome: ■■■■■■
Nickname: ■■■■■■	Vulgo: ■■■■■■
Locale: Itacemópolis	Quebrada: Itacemópolis
Godfathers: ■■■■■■, ■■■■■■	Padrinhos: ■■■■■■
Date of Baptism: 5/21/2009	Data de batismo: 21-05-2009
Last three [places imprisoned]: CDP de Piracicaba, CPD de Americana and P2 de Itapetininga	Três últimas: CDP de Piracicaba, CPD de Americana e P2 de Itapetininga
[Prior] Punishment: Private-debt suspension prior to expulsion.	Punição: Um prazo particular antes da exclusão.
Motive for expulsion: Private-debt suspension expired with outstanding debt of BRL 5,350.00	Motivo da exclusão: Prazo particular vencido no valor de 5.350,00
Date of expulsion: 6/7/2010	Data da exclusão: 07-06-2010
Value of outstanding debt: BRL 3,000 in crack and BRL 925 in cocaine June 2010 On 8/20/2011 BRL 1,300 was paid = Current debt BRL 2,625 crack for October	Valor dos débitos: 3.000,00 de PT e 925,00 de MI 06/2010 Dia 20/08/2011 foi arremessado 1.300 = Dívida atual 2.625 PT mês 10
NOTE: This person has an expired suspension period and is in the street as of 6/7/2010, he was in Ribeirão Preto on 8/7/2011 we spoke with him by phone he said he didn't have the money, he asked for a few days along with brother [i.e. baptized member] ■■■■ and ■■■■ agreed to bring the report and at that time asked that the report be made, the person in question is working in the street and earning a monthly salary of BRL 1,000.	OBS: O mesmo está no prazo vencido na rua da data 07-06-2010, encontra-se em Ribeirão Preto na data 07-08-2011 trouxemos o mesmo na linha ele passou que estava sem a moeda, pediu alguns dias junto com o irmão ■■■■ o ■■■■ ficou de vim com o relatório e na mesma hora pediu para que fosse feito o relatório, o mesmo está trabalhando na rua e salariado com o valor de 1.000,00 mensal.

This individual's prior punishment for a private debt seems to have influenced his expulsion in June 2010. He was contacted 14 months later by the PCC and ended up paying back a third of his outstanding debt.

accompanied them, we call them “criminal criminal records.”¹⁴ While we lack similar data for other gangs, intelligence officials in seven Brazilian states believe that no other faction approaches this level of record-keeping. One leader of a CV-allied faction admitted having difficulty maintaining even a basic roster, and being unable to incorporate “previous punishments” and other data fields.¹⁵

Explicit instructions accompany the templates in DHN: “When registering a suspension, all personal data is required. Name, nickname [etc.]... if he’s received a punishment by the family [i.e., the PCC] and if so, its locale, motive, and date.” For expulsions, additional information is required: motive, locale, date, and *acompanhamento* (“oversight”), a list of PCC officials involved in judging the case, running from the Regional disciplinarian up through Central Management, whose authorization must be conveyed via the Summary (*Resumo*). The two digital templates in DWF appear to further standardize PCC recordkeeping: All subsequent punishment records (by last-modified date) follow these templates, while earlier ones present the same data in varied formats. The disciplinarian himself may have innovated, or simply adopted, a systemwide innovation.

These data reappear when individuals are mentioned in other documents. For example, the bad-debt reports contain 63 unique records of expulsions for overdue debt. Although these reports focus on

tracking and recovering debts rather than punishment per se, they recapitulate key data from individuals’ “criminal criminal records.” Figure 13 provides an anonymized example, with data-field names and key entries translated, and the original formatting preserved.

These cross-listings strongly suggest that “criminal criminal records” can be queried by members, at least those occupying posts. For example, the entry in Figure 13 was prepared sometime between July 2011 (the last date mentioned in the entry) and September 27, 2012 (the file’s last-modified date), but references an expulsion from July 2010. File metadata reveals that these reports’ authors are not the same as the punishment records’, and the former were unlikely to know the relevant facts offhand. Key elements of members’ “criminal criminal record” are similarly reproduced across PCC documents, suggesting that the underlying data are accessible, possibly by requesting a Summary from Central Management.

Lessing’s interviews with imprisoned PCC leaders in other states corroborate this view. One mentioned a queryable “center” (*central*) of personnel records in São Paulo.¹⁶ The other explained that newly arrived inmates are expected to report the information in their “criminal criminal record” to local PCC representatives, including “previous punishments”:

BL: ...I’m asking because I’m doing a study with [PCC] documents from São Paulo, ... and they always note “previous punishments.”

¹⁴ PCC members often refer to these as *cadastros* (registers) or, collectively and humorously, as their *cara-crachá* (a members-only credentialing system, as at a private club).

¹⁵ Interview, August 28, 2018.

¹⁶ Interview, July 25, 2017.

I: “Previous punishment” is asked about. If someone shows up and doesn’t report it, “Ah, I have a punishment in São Paulo but I won’t report it here.” But management is centralized (*Mas a geral é uma só*).

BL: You would have a way to find that out?

I: Absolutely. [...] We can find that out here. I’m just the representative for this wing, but there is a General Manager (*geral do estado*) for the whole state, he has our registry (*cadastro*) and it will go into the Summary (*Resumo*), the Summary records all of Brazil, it will be noted there in the registry, dates of baptism by his godfathers...

BL: Will “previous punishments” also be recorded?

I: “Previous punishments,” absolutely. Every act is recorded there.

BL: But you guys, being in other states [i.e., not São Paulo], do you have a way to consult it?

I: We do.

BL: Send a message, “Hey, can you look this guy up?”

I: We do, we do.¹⁷

Intriguingly, this ability to query—combined with moral sanction for lack of transparency—seems to induce an equilibrium in which truthful provision of personal information is the dominant strategy, and querying is rarely necessary:

I: Every time a member or affiliate arrives here in our wing, he comes to us, and if he has something to tell us, if he has a debt with the Comando, he will pass along the information. Transparency speaks volumes in a situation like that. If you arrive here full of lies, and later we get confirmation that those situations were true that you failed to tell us about, that generates a *different* type of situation. [...]

BL: You won’t trust the guy as much?

I: Right. [...] All of us, whenever there is contact. If I were released today, I’ll find the Comando wherever I end up, I will seek out the representative of that city, that neighborhood, that disciplinarian, that prison unit, and I’ll pass along my record (*cadastro*). I will have to act with transparency, because a Comando member is like that, he *is* transparency, he cannot lie.¹⁸

Our data support the idea of a voluntary-transparency equilibrium, documenting multiple expulsions for “lies” or “lack of transparency,” and a possible example of the equilibrium at work, from a note on an uncollected debt from an imposter:

...Upon incarceration he opened his heart... he told the truth that he wasn’t a member and had been using the name [of a member] while in the street.

With staggering irony, the PCC appears to have built what the state has conspicuously failed to: a true pan-opticon, in which the possibility of being observed at any time leads all inmates to act as though they were being observed always.

DISCUSSION

We argue that four central empirical findings—the PCC’s consignment-based drug trafficking business, its relatively mild and “sympathetic” punishment regime, and resource-intensive recordkeeping, and its use of profits for collective benefits—are causally interconnected. Analyzed together, they reveal a powerful approach to criminal governance that has probably facilitated the PCC’s unprecedented growth and resilience.

One advantage of the PCC’s consignment model is its potential for flexible, decentralized expansion. Yet, consignment only works if dealers regularly repay their debts in a timely fashion. Dealers have incentives to pay up and receive the next consignment, but in the rough-and-tumble world of drug dealing, there are countless frictions that can make delay or default tempting, hence the need, articulated in our documents, to “lean on” debtors. Yet, the very decentralization that consignment permits, particularly in “Frontier” areas such as São Paulo’s Interior, means that physically coercing individual street dealers could be costly or impractical.

The PCC has an elegant solution to this agency problem. First, it is inadvertently aided by the state, which—through its mass incarceration policies—directs significant resources to arresting dealers and bringing them to places where the PCC *can* easily punish them: the prison system. Crackdowns that drive up incarceration rates (and at 530 per 100,000 residents in 2016, São Paulo state’s is *very* high) raise dealers’ expected probability of being sent to a PCC-controlled prison and hence increase the downside risk of running afoul of its disciplinarians (Lessing 2017).¹⁹

Even in prison, though, the PCC metes out little physical punishment. We observe dozens of individual records of dealers imprisoned while holding debt; among these, only suspensions and expulsions are noted. This corroborates Dias and Salla’s (2013) finding that graded punishments replaced more violent and arbitrary sanctions within prison. Here too, the PCC benefits from the actions of the state, which—despite extensive prison construction—maintains a burgeoning inmate population (over 237,000 as of 2016) in conditions of intense overcrowding, precarious infrastructure, and insufficient and/or abusive guards. Under

¹⁷ Interview, July 3, 2017.

¹⁸ *Ibid.*

¹⁹ Even when state forces resort to lethal violence—São Paulo police killed 856 people in 2016—it can strengthen the PCC, whose stated mission is to protect criminals against state oppression.

such conditions, the prospect of losing PCC protection and welfare is a powerful incentive for repayment.

The PCC's internal disciplinary system further amplifies the force of nonviolent punishments in two key ways. First, in combining automatic suspensions with a system of jury trials and appeals, the PCC guarantees procedural justice (Tyler 2003): Sentences are handed down in a consistent, transparent, and nonarbitrary way. Mechanisms to avoid false positives ensure that only the guilty are punished.

Second, the PCC's "criminal criminal records" guarantee that infractions and resulting punishments become and remain common knowledge. PCC members, and potentially affiliates, can learn about someone's past actions and make accurate inferences about their future reliability. Suspensions may carry only a minor direct cost in missed opportunities for profit, but, like low credit scores, they hurt members' reputation in the eyes of potential future collaborators.

Do members and affiliates in fact stigmatize the punished? Within prison, Dias and Salla note that even brief suspensions involve "losing social status before the prison population." (2013, 404). In the urban periphery, Feltran's (2010) account of a PCC-led trial of a non-member, accused of embezzling from a local non-PCC drug firm, is illustrative. The accused's defense was strong and courageous, but a previous 30-day suspension counted against him, and he was sentenced to a beating. The true punishment, however, was the stigma attached to his conviction, as a relative explained: "He was completely demoralized in the world of crime, and there was no way he could return." (Quoted in Feltran 2010, 65). Our data suggests that this example is not atypical: Of the 63 expulsions recorded in the "bad-debts" documents, 27 note that the expelled member fled his home municipality and could not be located.

Of course, meticulous recordkeeping alone does not guarantee fairness or induce compliance; after all, many authoritarian regimes have kept detailed records of genocide, mass killings, and torture.²⁰ Rather, record-keeping works in conjunction with an efficacious and procedurally fair "criminal criminal justice" system to create the conditions for widespread voluntary compliance (Tyler 2003). The resulting system of governance, we argue, approximates Weber's ideal type: "[legitimation of] domination by virtue of 'legality,' by virtue of the belief in the validity of legal statute and functional 'competence' based on rationally created rules." (1946, 79).

Weber's concepts are meant to be scientific and observable (1968, 215), but we rarely know whether subjects truly believe in the legitimacy of the authorities to which they submit (Wedeen 2015, xiv). PCC specialists disagree about this very point: In Biondi's (2016) prison ethnography, PCC authority derives entirely from shared norms, whereas other scholars emphasize fear of punishment (Dias and Salla 2013; King and Valensia 2014).

While our data cannot decide the question, our theory illuminates the potential complementarity between the PCC's collectivist norms and its "criminal criminal justice" system. In our story, members know that suspensions and expulsions (1) reflect accurate assessments of behavior, (2) are carefully recorded and can be queried, and hence (3) are generally voluntarily reported to unfamiliar members, who will then (4) treat infractors accordingly. While such a system could plausibly be sustained on a purely materialistic, instrumental basis, norms can buttress each step: If the behavior in question is seen as unethical (and not merely prohibited), members are more likely to stigmatize transgressors. Punishment by an unreliable tyrant can be quite harsh, but it will carry little additional stigma if others perceive the accusation as potentially false or the violated rules as arbitrary. Punishment by a decentralized and deliberative network of dedicated volunteers committed to a clear set of rules can be mild precisely because its mere application is a trustworthy signal of rule-breaking to others. In the PCC's case, those rules reflect shared norms of integrity and equanimity that, when collectively practiced, produce a better criminal underworld for everyone. Thus, their violation induces, in an organic way, a strong social stigma. Obsessive recordkeeping and a norm of transparency ensure this stigma will be long-lasting and far-reaching.

Supporting the idea that norms play a key role in sustaining criminal governance, new factions throughout Brazil, often formed in opposition to PCC expansion, nonetheless borrow and adapt its normative language and appeals. As one informant from a state only partially dominated by the PCC told Lessing, "The PCC may not have won the war of territory, but it won the war of ideas."²¹ The "aid bank" document discussed above, and at length in Denyer Willis (2014), exemplifies this: Its authors invoke the PCC's moral precepts to advocate, apparently successfully, for implementing a criminal redistributive mechanism.

To clarify, our claim is not that legitimacy and a perception of fairness are necessary to generate compliance nor that they always induce *more* compliance than brute coercion, at least locally. Had the PCC adopted harsher punishments, it is quite possible that nonpayment rates would have been lower. Indeed, many expelled members simply flee rather than paying up; in one case, a member accused of unauthorized killing—an infraction punishable by death—is given a chance to collect evidence for his defense prior to PCC trial and takes the opportunity to flee. Such underpunishment likely motivated the January 2012 *salve*, which made punishment marginally harsher in response to excessive outstanding debts. Yet, this readjustment did not affect the overall mildness and procedurally transparent aspects of the PCC disciplinary regime. This suggests that Central Management takes a profit-satisficing approach, adjusting the harshness of its punishment practices to maintain basic profitability, but

²⁰ We thank an anonymous reviewer for this point.

²¹ Interview, Curitiba, August 2017.

stopping short of draconian punishments that might undercut perceived legitimacy.

This hypothesized prioritization of legitimate governance and procedural justice over profits finds evidentiary support in the PCC's bookkeeping practices. Punishment records are decidedly more detailed and meticulous than the purely financial documents; the bad-debt reports—containing both financial and personnel data—offer the clearest evidence. Whereas each individual's "criminal criminal record" is dutifully reproduced, including negotiated repayment schedules, excuses given, rumored whereabouts, and PCC personnel involved in punishment decisions, the actual debt totals are inconsistent and frequently differ from the sum of individual outstanding debts. The individual consignment data contain clerical errors; the expense accounting in the ledgers is haphazard; and one major reduction in outstanding debt goes unaccounted for. However important bookkeeping is to the PCC's successful scaling up of drug trafficking operations, financial efficiency does not seem to drive its embrace of bureaucracy.

All of this suggests that the PCC views drug profits less as an end than as a necessary means to strengthen and expand the organization, a view consistent with its use of those profits to fund collective goods such as transportation for members' families. Indeed, the PCC seems to have deliberately designed flexible business-side rules in order to produce a perception of equanimity and fairness. The severest punishments are reserved for betrayals of core organizational values; if that means a somewhat higher (but manageable) level of non-payment on debts, so be it.

This view flows from the data in our trove, but is consistent with Marcola's testimony concerning the "democratizing" reforms he implemented after his 2002 coup. These were meant to put an end to both the violence being meted out by the PCC's founders and the extortionate "pyramid scheme" it supported:

"The leadership was drunk with its own success [...] and ended up committing atrocities worse than those they had sought to restrain [...] It was a huge abuse of power, 80 or 90 inmates assassinated per year. [...] From the moment that I distributed it, that power was divided, the pyramid ended... from that moment on, my leadership also ended" (Marques 2010, 322–4).

While we cannot know how a counterfactually draconian PCC would have fared, it is undeniable that PCC expansion accelerated after Marcola ended its founders' harsh, personalistic rule. Perhaps the PCC's apparent preference for legitimacy is part of a long con, trading short-run revenues for expansion but eventually reverting to predatory, profit-maximizing rule. A more plausible explanation is that establishing legitimacy is itself part of a long-term maximization strategy, one intriguingly anticipated in Skaperdas and Syropoulos' "Gangs as Primitive States" (1997). These, they conjecture, "once established through coercion, [might] improve efficiency later on... [by] reduc[ing] the waste of resources associated with the use of force and

protracted conflict if it could be done with minimal threat to their rule. One way to do that would be to convince their subjects of their rule's legitimacy" (1997, 74).

CONCLUSION

We draw on internal PCC financial and disciplinary records to argue that it has developed a form of criminal governance characterized by rational-bureaucratic legitimacy. That is, its authority rests less on violence and the charismatic qualities of individual leaders—as in the CV and the pre-Marcola period of the PCC itself—than on the "legality of enacted rules and the right of those elevated to authority under such rules to issue commands" (Weber 1968). Naturally, the PCC only approximates Weber's ideal type: Occasional betrayals and brutal purges still occur, as do vestiges of charismatic authority—including Marcola himself, his protestations notwithstanding. Yet, the PCC's own trajectory recalls Weber's "routinization of charisma" (1968), linking premodern and modern forms of governance. In a similar vein, upstart factions in Brazil's poorer states often formally emulate the PCC's codes, norms, and bureaucratic structure while generally failing to achieve "Weberian" efficiency, which should surprise few scholars of development. These echoes suggest connections among criminal governance, state-formation, and insurgency, to which we now turn.

Scholars have long compared state-making to banditry and racketeering (e.g., Olson 1993; Scott 2009; Tilly 1985). Up to a point, these metaphors can be fruitfully reversed to illuminate criminal governance. If California prison gangs function as Olsonian stationary bandits (Skarbek 2011), Brazilian prison-gang expansion has a Tillyian cast: The PCC made war, and war made the PCC. Like the CV before it, the PCC eliminated armed rivals within a delimited territory (the prison system), established a monopoly on the use of force, provided order in exchange for tribute, and proceeded to expand to new territories (the urban periphery) where the process repeated. This process both fed and was fed by the factions' development of internal organizational structures and outward governance practices. The PCC's structure and approach to governance diverged from the CV's, and so too have its ambitions. In Tillyian fashion, thirty years of increasingly competitive expansion have left the most territorially extensive criminal faction with the most sophisticated bureaucracy and organizational structure.

The Tillyian framework is misleading in at least two respects, however. First, prison-gang governance and expansion do not occur in a stateless realm. In the spaces where criminal organizations arise and assert control (prisons, urban peripheries, and illicit markets), the state may be weak, but it is far from absent. Indeed, these spaces are shaped and often constituted by state policies and actions and are embedded within state-led societies. Tilly's proto-states clash on an empty stage, constrained only by geography; the topology that constrains prison-gang expansion—prison versus

street, state versus federal prisons—is primarily legal and jurisdictional, *state-made*. Critically, so are many of the mechanisms by which prison gangs traverse these obstacles: the flux of criminals through the prison system, their segregation by prison officials according to gang affiliation, and the transfer of gang leaders across state lines. Above all, the governance that prison gangs establish usually overlaps or meshes with state authority, at least partially. While this intersection can be violent and antagonistic, it can also exhibit quiet coexistence and even mutual dependence, through an everyday “consensus” that can be broken and mended (Denyer Willis 2015). Prison-gang governance is thus deeply paradoxical, both opposed to and symbiotic with the state.

Second, any legitimacy in criminal governance is, by its nature, bottom-up. In Tilly’s cynical view, “Legitimacy is the probability that other authorities will act to confirm the decisions of a given authority” (1985, 171). If this view is contentious with respect to states, it is clearly wrong with respect to criminal groups. Factions are illegal, regularly demonized and actively combated by state authorities. While states do, in practice, defer to criminal authority in prisons and peripheries, such deference is shameful and thus closeted. Similarly, although factions may resemble social movements in their self-professed struggles against oppression, they remain movements by, of, and for criminals: Factions may fight for inmates’ human rights, but they also have, since their founding, trafficked drugs, organized robberies, and orchestrated prison breaks and mass violence on the streets. No faction has articulated a real political program, including the PCC—despite its nickname “the party of crime.” As such, factions lie beyond the pale of mainstream civil society and politics. If the PCC’s governance is legitimate, it is because the marginalized people it governs see it as such.

In their oppositional stance, factions resemble insurgencies. Both go beyond social movements by drawing on episodes of state oppression to mobilize violent opposition. Both seem to benefit from an ability to motivate members with ideological rather than purely materialistic appeals (Gutiérrez Sanín 2008; Weinstein 2006). Although scholars often assume criminal groups are fundamentally profit-maximizers (e.g., Skaperdas and Syropoulos 1997), smaller gangs are often held together primarily by culture and identity (e.g., Hagedorn 1994). The PCC’s approach to governance depends on the factors that are similarly non-materialistic, but centered on universal norms and objectives—a kind of criminal ideology—rather than specific, local identities.

Yet, prison gangs, the PCC included, are not engaged in competitive state-building, and the PCC’s ideology, unlike those typical of insurgencies, does not promise a utopian future after victory. Indeed, its lofty mission of “peace among thieves and war on the state” translates into relatively mundane practical demands when members interact with officials: the “dignified serving of one’s time” (Biondi 2016, 63) and observance of the rights guaranteed by Brazil’s own penal code. These are hardly revolutionary objectives. Indeed, they may be

largely satisfied in São Paulo, where prison violence and unrest has become rare. And though the PCC is expansionist, it seeks neither revolution nor secession, but rather leeway to govern spaces and populations that the state seemed unable or disinclined to govern itself. To win that leeway in São Paulo, the PCC orchestrated debilitating terror attacks; under hegemony, ironically, the PCC holds its capacity for disruption in reserve, and the threat it poses to state authority has become oblique.

The PCC’s uncontested rule in São Paulo and rapid expansion throughout Brazil suggest the comparative advantages of rational-bureaucratic legitimacy in criminal governance. That even upstart local factions contesting PCC expansion emulate its form suggests that the rise of rational-bureaucratic authority may be as irreversible in the criminal realm as it was in that of states and firms at the dawn of modernity. Yet, the PCC’s colonial project has faced serious setbacks, while the CV, with its confederacy of autonomous franchises run by charismatic leaders, has shown signs of resilience and resurgence, building a system of flexible alliances with local factions rather than an integrated (but threatening) organizational presence. With the collapse of the PCC-CV nonaggression pact in 2016 and the ensuing eruption of inter-faction conflict throughout the country, the coming years will provide grim evidence of which approach is superior. Meanwhile, research on prison gangs, criminal governance, and perhaps armed groups in general can benefit from comparison with the PCC’s astonishing example.

SUPPLEMENTARY MATERIAL

To view supplementary material for this article, please visit <https://doi.org/10.1017/S0003055418000928>.

Replication materials can be found on Dataverse at: <https://doi.org/10.7910/DVN/QVY8JO>.

REFERENCES

- Alves, Jaime Amparo. 2015. “‘Blood in Reasoning’: State Violence, Contested Territories and Black Criminal Agency in Urban Brazil.” *Journal of Latin American Studies* 48 (1): 61–87.
- Arias, Enrique Desmond. 2006. “The Dynamics of Criminal Governance: Networks and Social Order in Rio de Janeiro.” *Journal of Latin American Studies* 38 (02): 293–325.
- Arjona, Ana, Nelson Kasfir, and Zachariah Mampilly, eds. 2015. *Rebel Governance in Civil War*. New York: Cambridge University Press.
- Barbieri, Cristiane. 2014. “Os Negócios Do PCC.” *Época Negócios* (December).
- Biderman, Ciro, João M.P. De Mello, Renato S. De Lima, and Alexandre Schneider. 2018. “Pax Monopolista and Crime: The Case of the Emergence of the Primeiro Comando Da Capital in São Paulo.” *Journal of Quantitative Criminology*. Online First: November 2018.
- Biondi, Karina. 2016. *Sharing This Walk: An Ethnography of Prison Life and the PCC in Brazil*. Durham: University of North Carolina Press.
- Biondi, Karina. 2018. *Proibido Roubar Na Quebrada: Território, Hierarquia e Lei No PCC*. São Paulo: Terceiro Nome.
- Blok, Anton. 1974. *The Mafia of a Sicilian Village, 1860–1960: A Study of Violent Peasant Entrepreneurs*. Oxford: Blackwell.
- Campana, Paolo. 2016. “Explaining Criminal Networks: Strategies and Potential Pitfalls.” *Methodological Innovations* 9: 1–10.

- Campana, Paolo, and Federico Varese. 2018. "Organized Crime in the United Kingdom: Governance of Markets and Communities." *British Journal of Criminology* 58 (6): 1381–400.
- Denyer Willis, Graham. 2014. *The Gun Library*. Boston Review (April 8).
- Denyer Willis, Graham. 2015. *The Killing Consensus*. Berkeley: University of California Press.
- Dias, Camila Nunes, and Fernando Salla. 2013. "Organized Crime in Brazilian Prisons: The Example of the PCC." *International Journal of Criminology and Sociology* 2: 397–408.
- DJSP. 2015. "Public Presentment of Indictment." *Diário Oficial de Justiça de São Paulo* 1815: 394–405.
- Evans, Peter B. 1995. *Embedded Autonomy: States and Industrial Transformation*. Princeton: Princeton University Press.
- Feltran, Gabriel de Santis. 2010. "Crime e Castigo Na Cidade: Os Repertórios Da Justiça e a Questão Do Homicídio Nas Periferias de São Paulo." *Caderno CRH* 23 (58): 59–73.
- Feltran, Gabriel de Santis. 2018. *Irmãos: Uma História Do PCC*. São Paulo: Companhia das Letras.
- Gambetta, Diego. 2009. *Codes of the Underworld*. Princeton: Princeton University Press.
- Geddes, Barbara. 1990. "Building 'State' Autonomy in Brazil, 1930–1964." *Comparative Politics* 22 (2): 217–35.
- Godoy, Marcelo, and Bruno Paes Manso. 2014. "20 Anos de PCC—o Efeito Colateral Da Política de Seguranc; a Pública." *Interesse Nacional* 6 (24), 26–35.
- Grillo, Carolina C. (2013). "Coisas Da Vida No Crime: Tráfico e Roubo Em Favelas Cariocas." Ph.D. Dissertation: Universidade Federal do Rio de Janeiro, Rio de Janeiro.
- Gutiérrez Sanín, Francisco. 2008. "Telling the Difference: Guerrillas and Paramilitaries in the Colombian War." *Politics & Society* 36 (1): 3–34.
- Hagedorn, John M. 1994. "Neighborhoods, Markets, and Gang Drug Organization." *Journal of Research in Crime and Delinquency* 31 (3): 264–94.
- Hirata, Daniel V. 2010. "Sobreviver Na Adversidade: Entre o Mercado e a Vida." Ph.D. Dissertation: Universidade de São Paulo, São Paulo.
- Johnson, Bruce D., Ansley Hamid, and Harry Sanabria. 1991. "Emerging Models of Crack Distribution." In *Drugs, Crime, and Social Policy: Research, Issues, and Concerns*, ed. Thomas Mieczkowski. Boston: Allyn and Bacon, 58–78.
- Kalyvas, Stathis N. 2006. *The Logic of Violence in Civil War*. Cambridge: Cambridge University Press.
- King, Roy D., and Bruna Valensia. 2014. "Power, Control, and Symbiosis in Brazilian Prisons." *South Atlantic Quarterly* 113 (3): 503–28.
- Leeds, Elizabeth. 1996. "Cocaine and Parallel Politics in the Brazilian Urban Periphery: Constraints on Local-Level Democratization." *Latin American Research Review* 31 (3): 47–83.
- Leeson, Peter, and David Skarbek. 2010. "Criminal Constitutions." *Global Crime* 11 (3): 279–97.
- Lessing, Benjamin. 2008. "As Facções Cariocas Em Perspective Comparativa." *Novos Estudos CEBRAP* 27 (1): 43–62.
- Lessing, Benjamin. 2017. "Counterproductive Punishment: How Prison Gangs Undermine State Authority." *Rationality and Society* 29 (3): 257–97.
- Lessing, Benjamin. 2018. "Conceptualizing Criminal Governance." Paper presented at Criminal Governance in the Americas Conference, University of Chicago, October 26, 2018.
- Levitt, Steven D., and Sudhir A. Venkatesh. 2000. "An Economic Analysis of a Drug-Selling Gang's Finances." *The Quarterly Journal of Economics* 115 (3): 755–89.
- Ley, Sandra, Shannan Mattiace, and Guillermo Trejo. 2018. "Indigenous Resistance to Criminal Governance." Paper presented at the Annual Meeting of the American Political Science Association, Boston, September 1.
- Lima, William da Silva. 1991. *Quatrocentos Contra Um: Uma História Do Comando Vermelho*. Rio de Janeiro: ISER.
- Marques, Adalton. 2010. "'Liderança', 'Proceder' e 'Igualdade': Uma Etnografia Das Relações Políticas No Primeiro Comando Da Capital 'Leadership.'" *Etnográfica* 14 (2): 311–55.
- Mendez, Juan E., Guillermo O'Donnell, and Paulo Sérgio Pinheiro, eds. 1999. *The (Un)Rule of Law and the Underprivileged in Latin America*. South Bend: University of Notre Dame Press.
- Milgrom, Paul R., Douglass C. North, and Barry R. Weingast. 1990. "The Role of Institutions in the Revival of Trade: The Law Merchant, Private Judges, and the Champagne Fairs." *Economics and Politics* 2 (1): 1–23.
- Misse, Michel. 2011. *Crime e Violência No Brasil Contemporâneo*. Rio de Janeiro: Lumen Juris.
- Olson, Mancur. 1993. "Dictatorship, Democracy, and Development." *American Political Science Review* 87 (3): 567–76.
- Paes Manso, Bruno, and Camila Nunes Dias. 2018. *A Guerra*. São Paulo: Todavia.
- Robertson, Graeme B. 2007. "Strikes and Labor Organization in Hybrid Regimes." *American Political Science Review* 101 (4): 781–98.
- Scott, James C. 2009. *The Art of Not Being Governed: An Anarchist History of Upland Southeast Asia*. New Haven: Yale University Press.
- Shapiro, Jacob N., and David A. Siegel. 2012. "Moral Hazard, Discipline, and the Management of Terrorist Organizations." *World Politics* 64 (1): 39–78.
- Skaperdas, Stergios, and Constantinos Syropoulos. 1997. "Gangs as Primitive States." In *The Economics of Organised Crime*, eds. Gianluca Fiorentini and Sam Peltzman. New York: Cambridge University Press, 61–78.
- Skarbek, David. 2011. "Governance and Prison Gangs." *American Political Science Review* 105 (4): 702–16.
- Tilly, Charles. 1985. "War Making and State Making as Organized Crime." In *Bringing the State Back In*, eds. Peter B. Evans, Dietrich Rueschemeyer, and Theda Skocpol. Cambridge: Cambridge University Press, 169–87.
- Tyler, Tom R. 2003. "Procedural Justice, Legitimacy, and the Effective Rule of Law." *Crime and Justice* 30: 283–358.
- Weber, Max. 1946. "Politics as a Vocation." In *Max Weber: Essays in Sociology*. New York: Oxford University Press, 77–128.
- Weber, Max. 1968. *Economy and Society: An Outline of Interpretative Sociology*. eds. Hans Heinrich Gerth and C. Wright Mills. Berkeley: University of California Press.
- Wedeen, Lisa. 2015. *Ambiguities of Domination*, 2nd edition. Chicago: The University of Chicago Press.
- Weinstein, Jeremy M. 2006. *Inside Rebellion: The Politics of Insurgent Violence*. New York: Cambridge University Press.