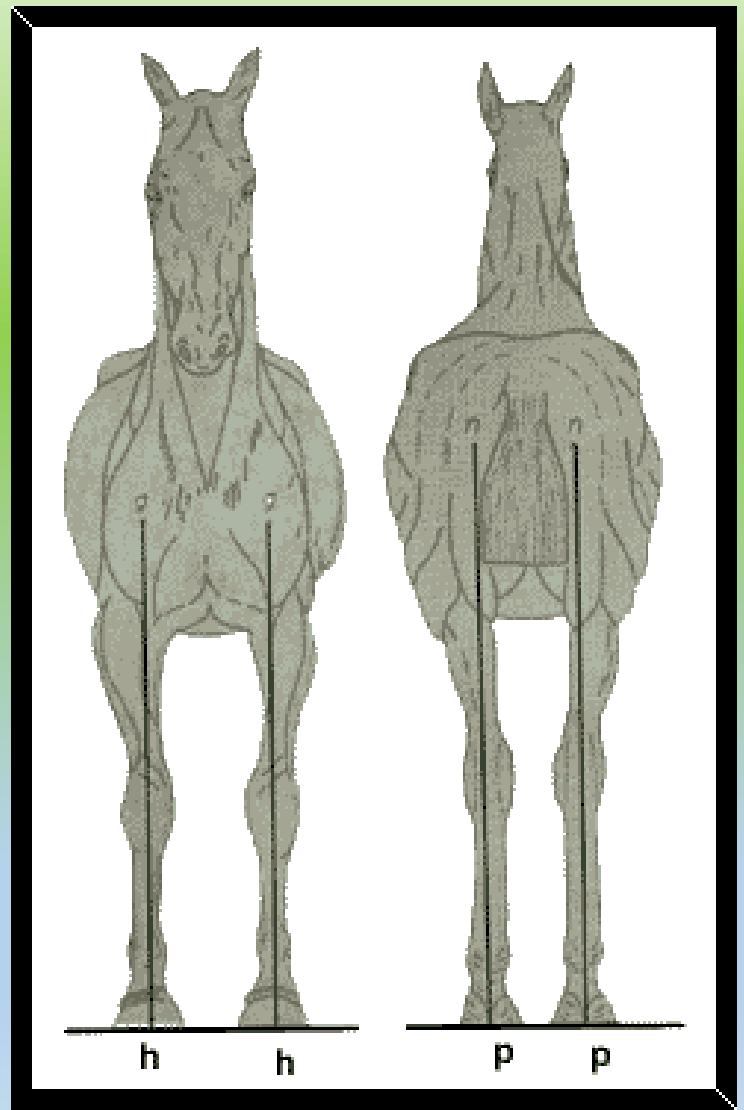
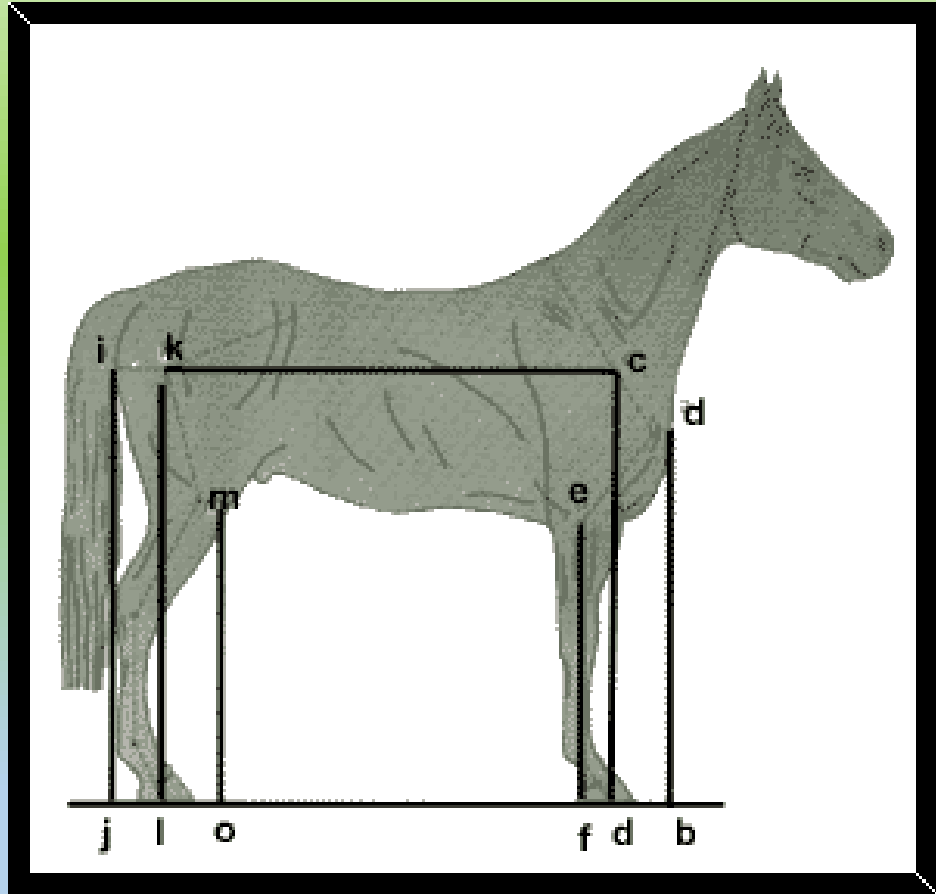


APRUMOS DE EQUINOS E BOVINOS



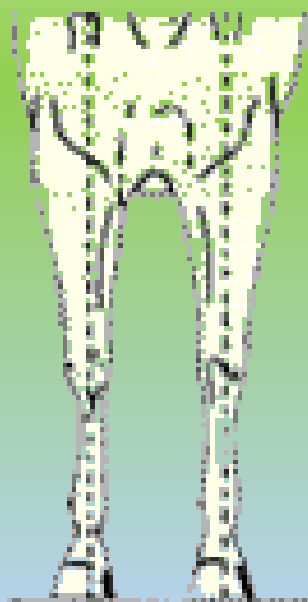
Prof. Titto, 2021

APRUMOS DO CAVALO



APRUMOS DO CAVALO

Visto de frente



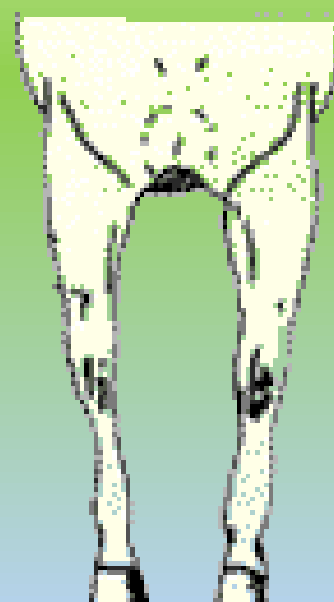
Regular



Aberto



Fechado

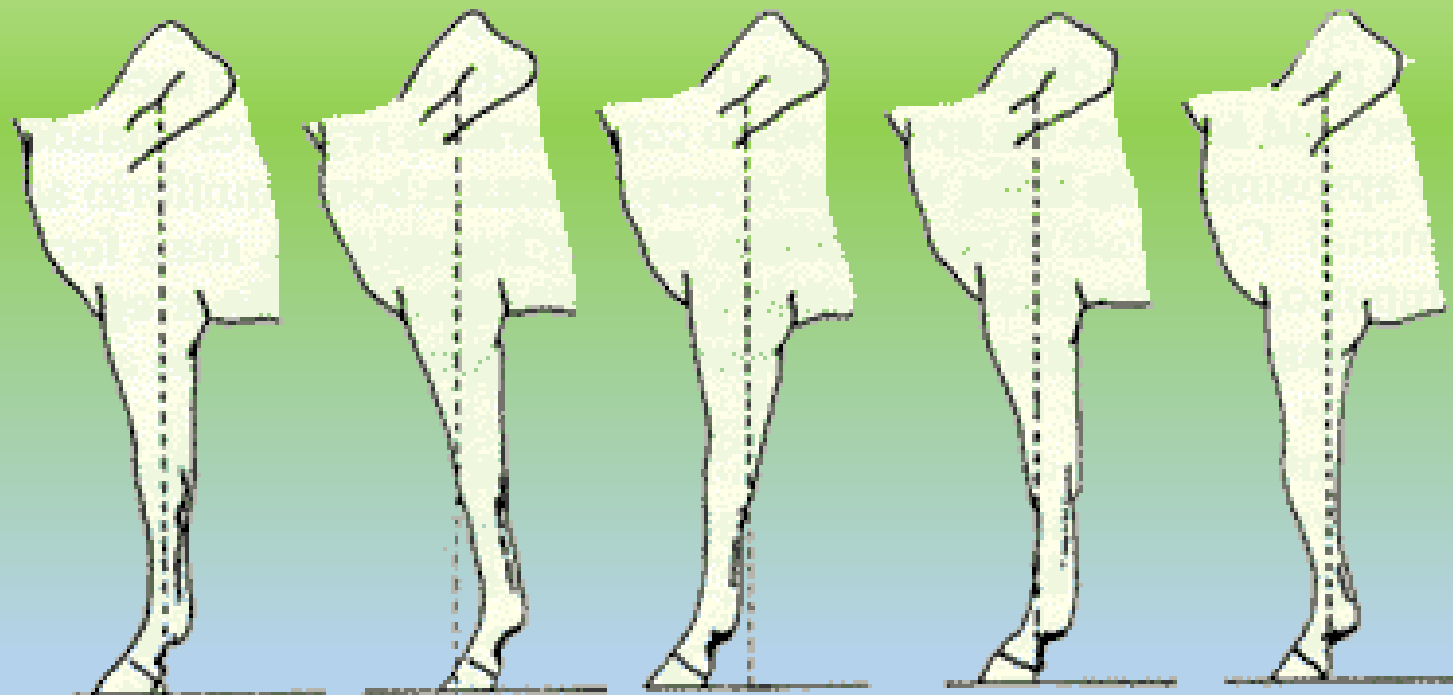


Joelhos esquerdos



Joelhos cambaios

Visão lateral dos membros



Regular

Debruçado

**Acampado
de diante**

Trascurvo

Ajoelhado

APRUMOS DO CAVALO

Visto de trás



Normal



Jarretes abertos



Jarretes cambaios



Aberto de trás

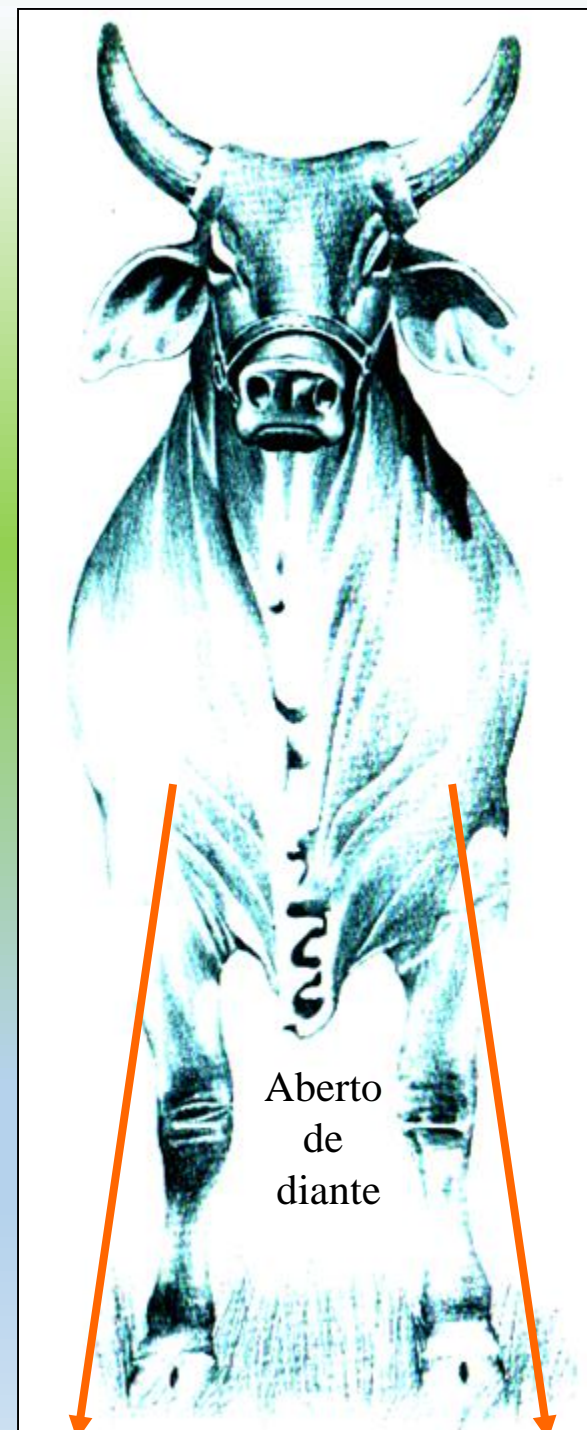


Fechado de trás

CAVALOS DE SELA E TRAÇÃO

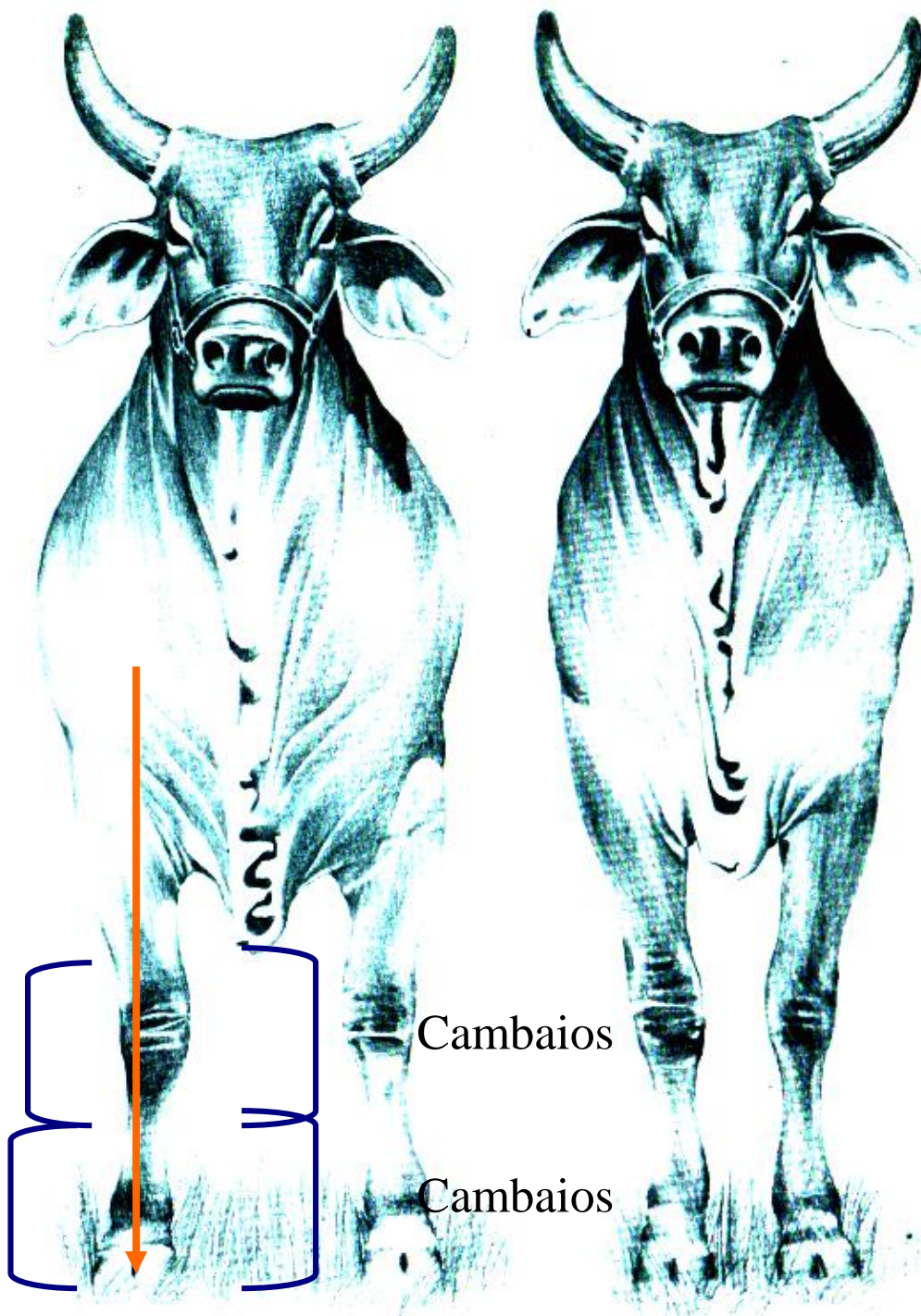


©Aprumos vistos de frente



😊 Aprumos vistos de frente

LABE



Arqueados

Cambaios

Arqueados

Cambaios

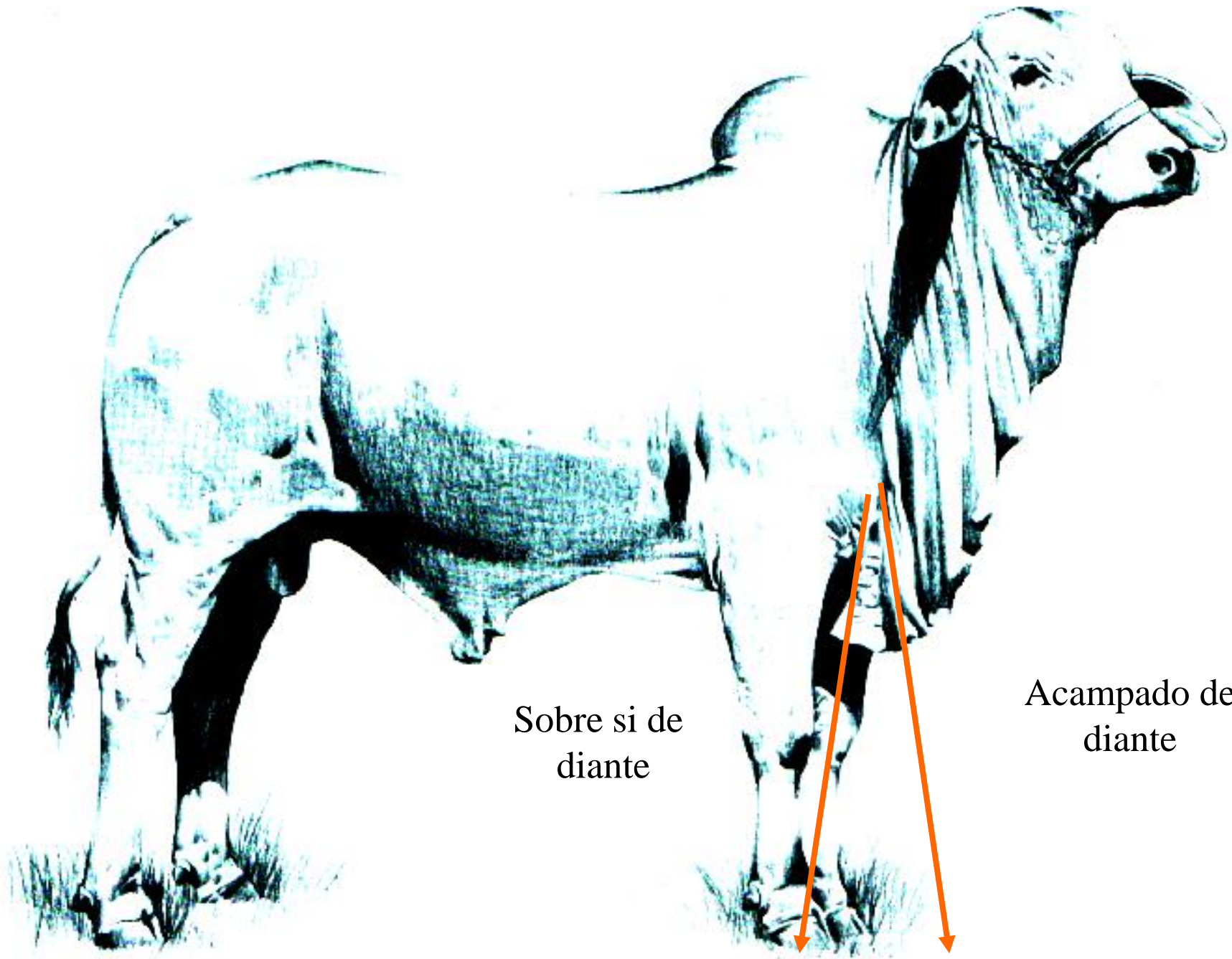
©Aprumos vistos
de lado



Aprumos corretos

5 a 10 cm

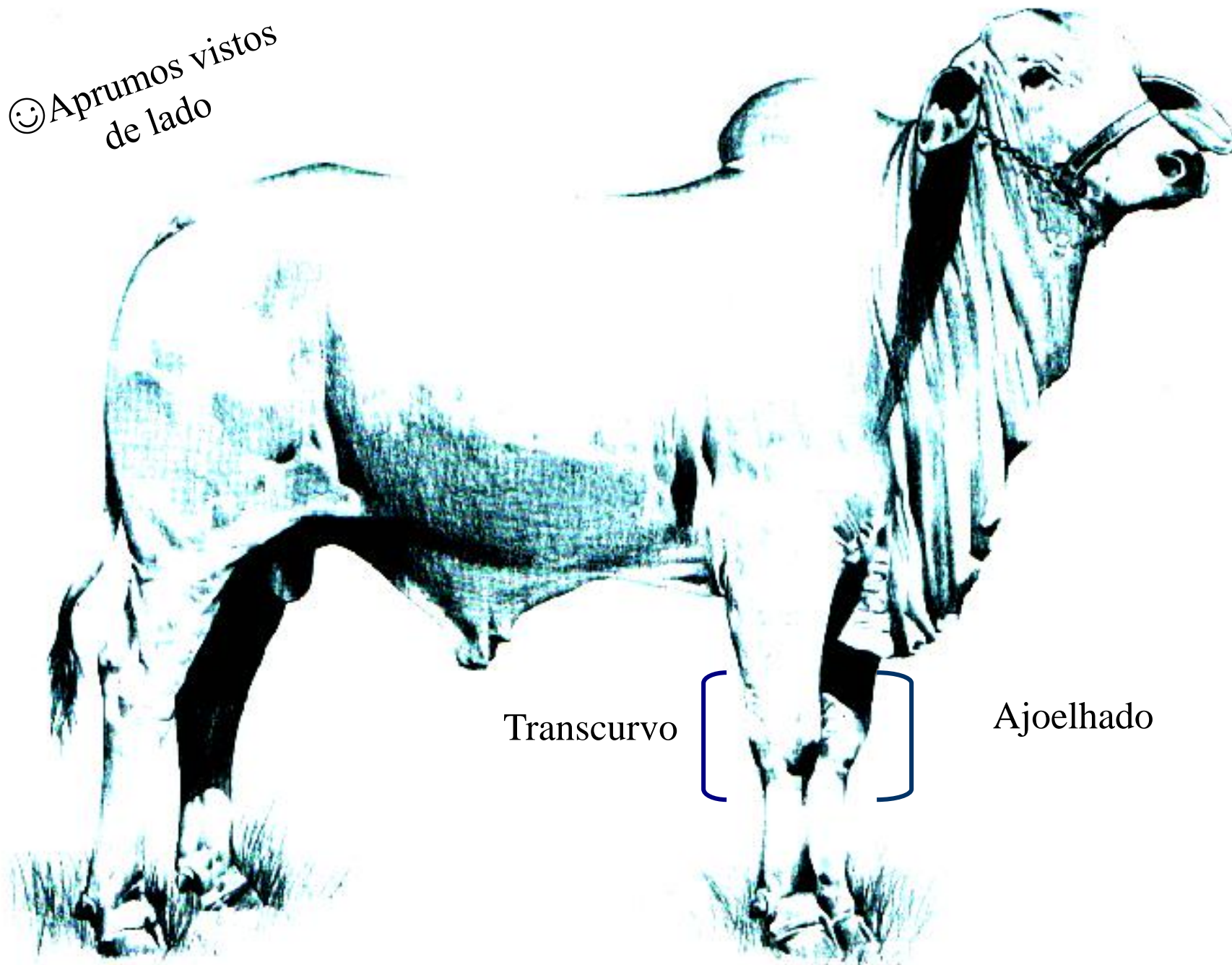
© Aprumos vistos
de lado



Sobre si de
diante

Acampado de
diante

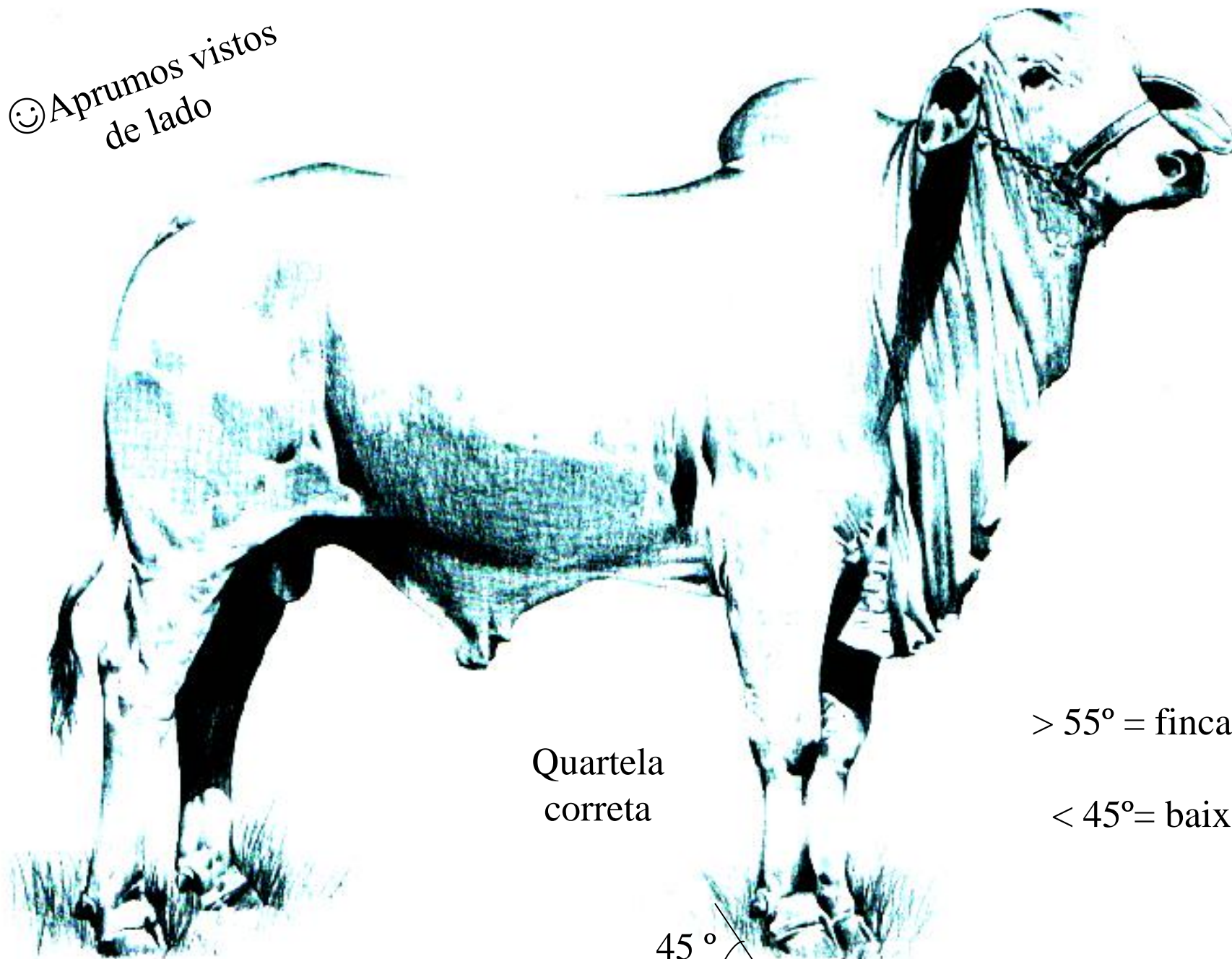
😊 Aprumos vistos
de lado



Transcurvo

Ajoelhado

☺ Aprumos vistos
de lado



Quartela
correta

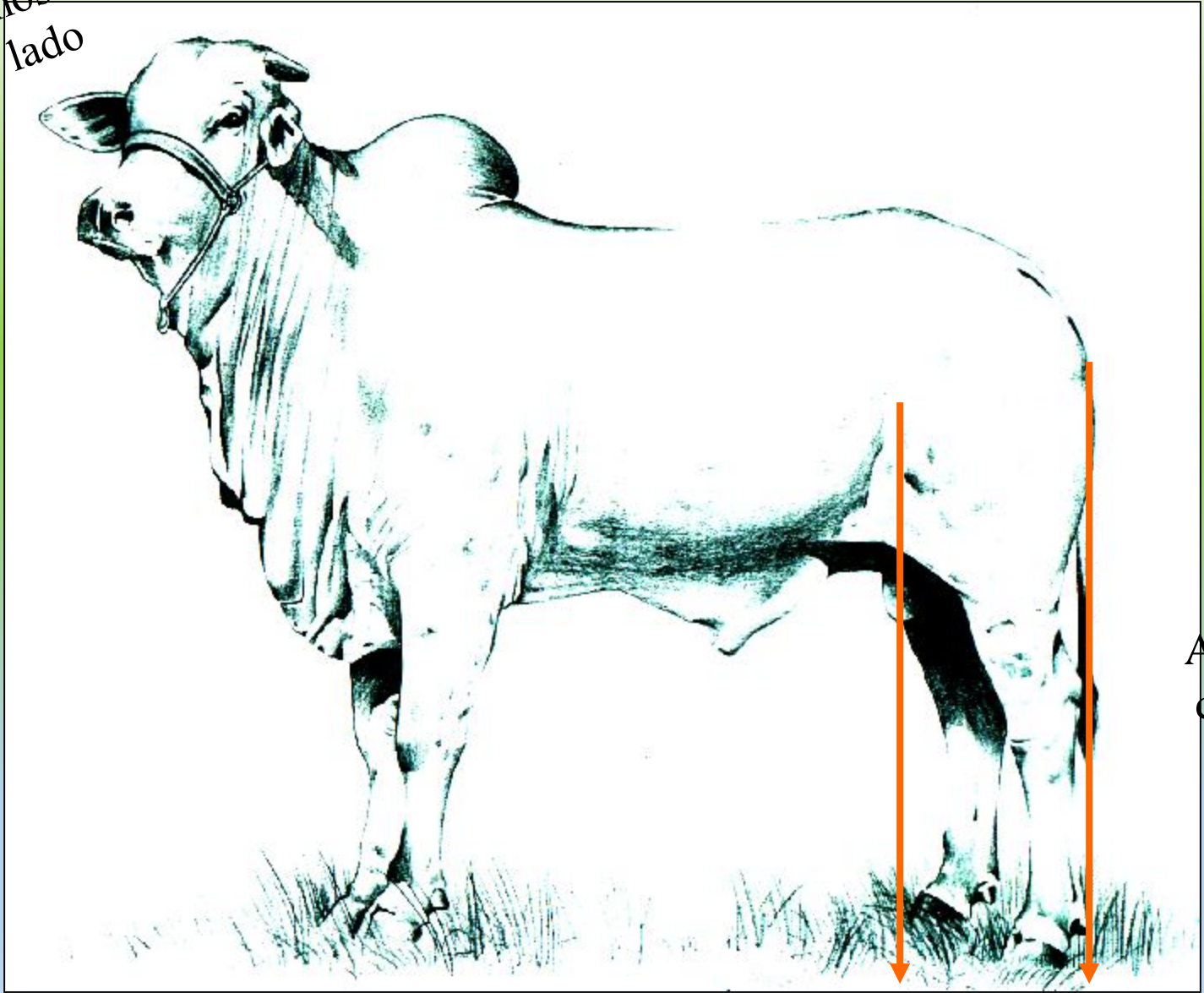
45°

> 55° = fincado

< 45° = baixo

☺ Aprumos vistos
de lado

LABE

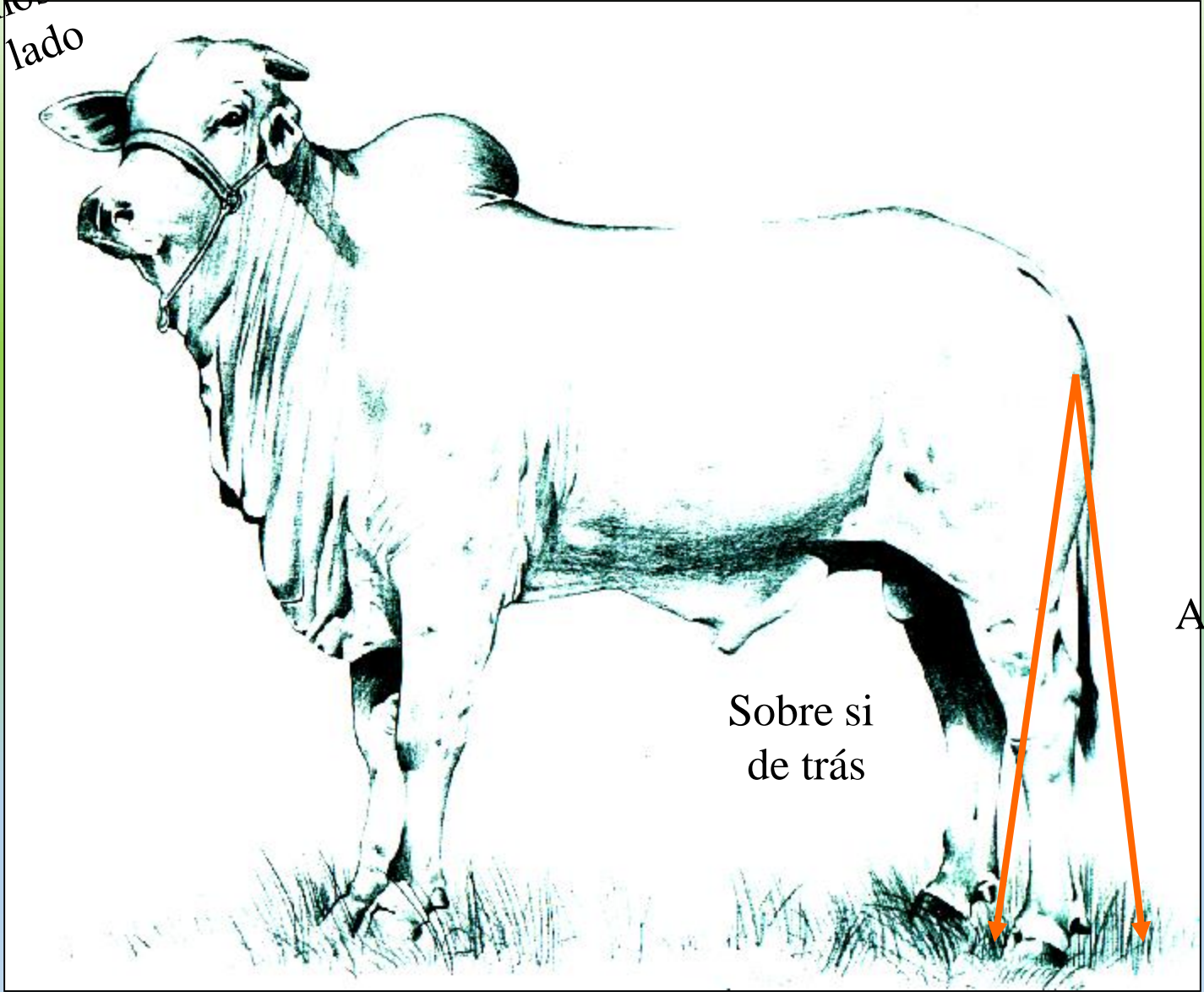


Aprumos
corretos

5 - 8 cm

☺ Aprumos vistos
de lado

LABE

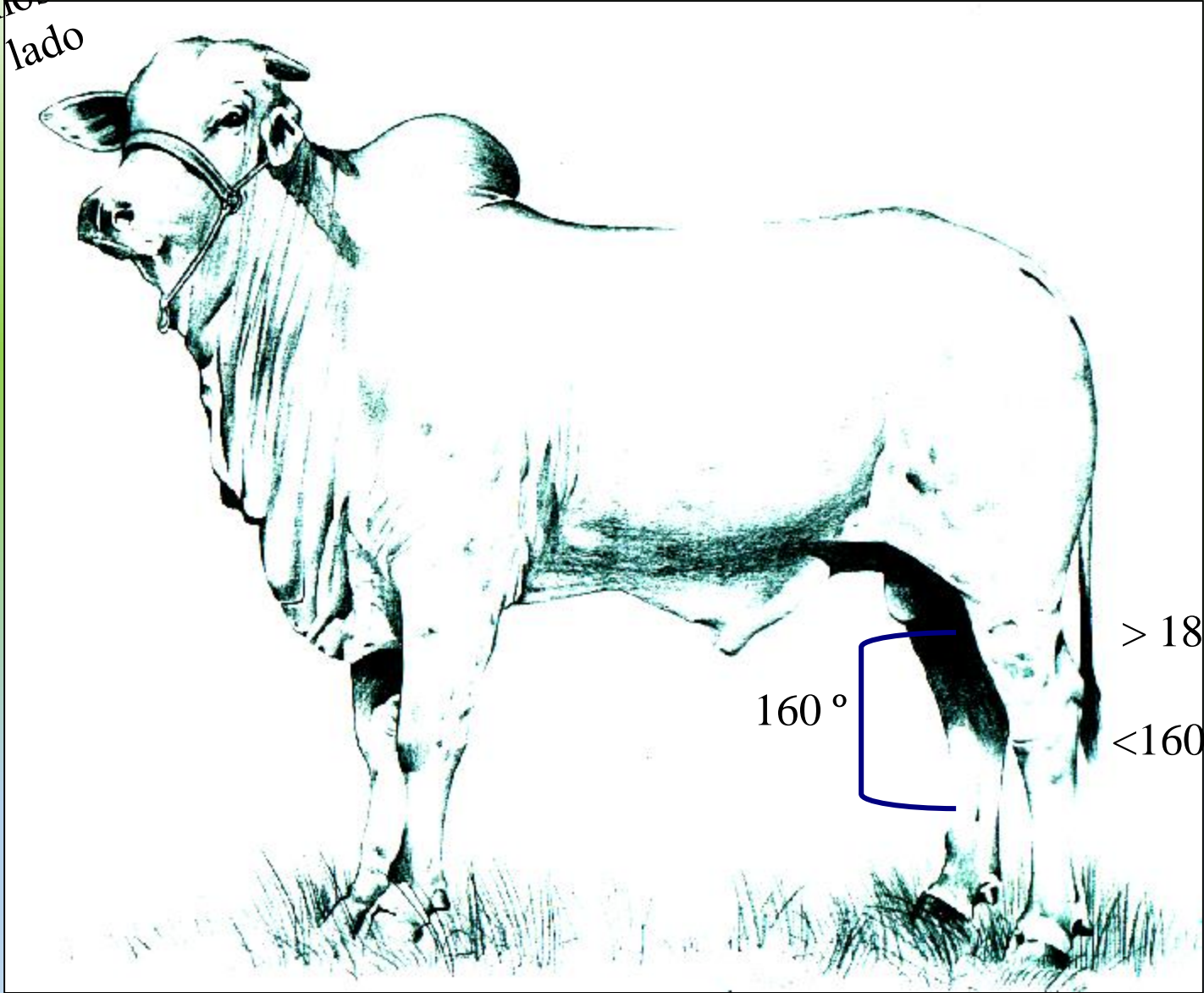


Sobre si
de trás

Acampado
de trás

☺ Aprumos vistos de lado

LABE

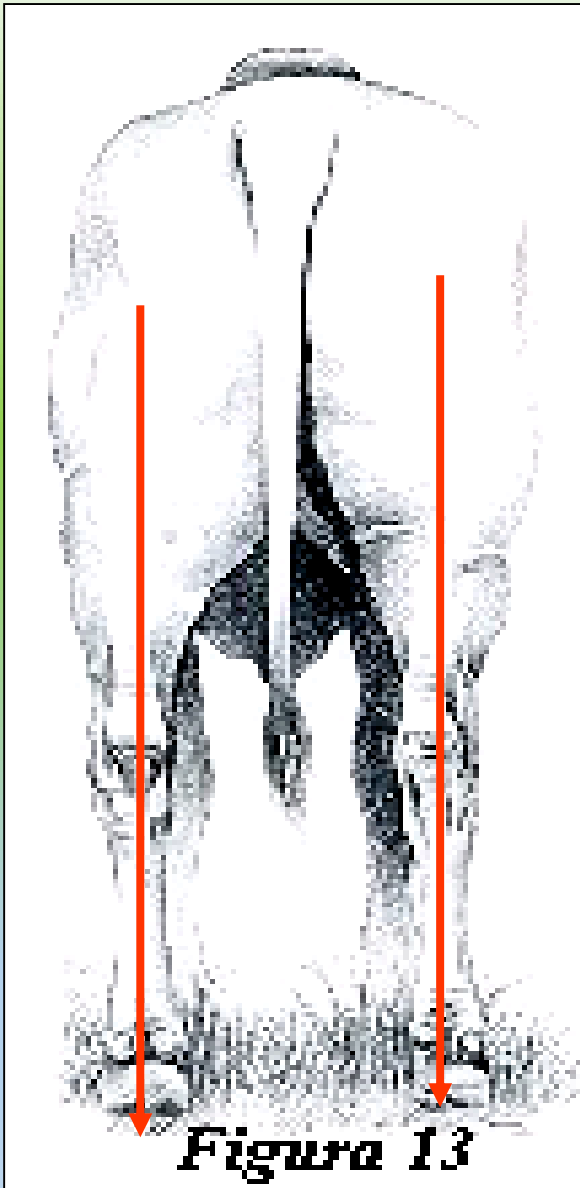


$> 180^\circ =$ aberto

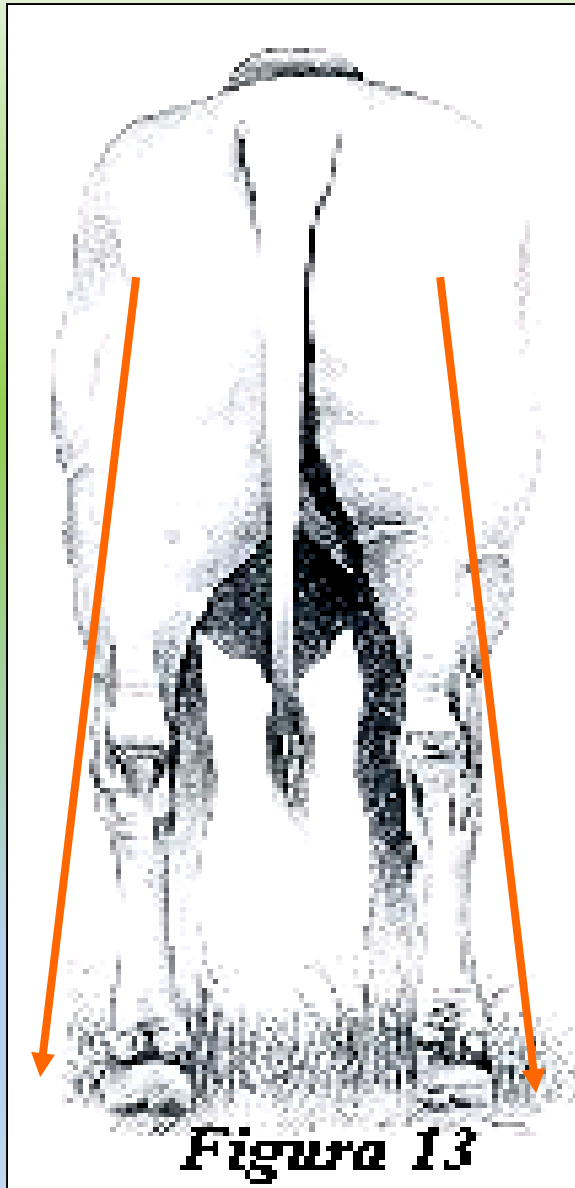
160°

$< 160^\circ =$ fechado

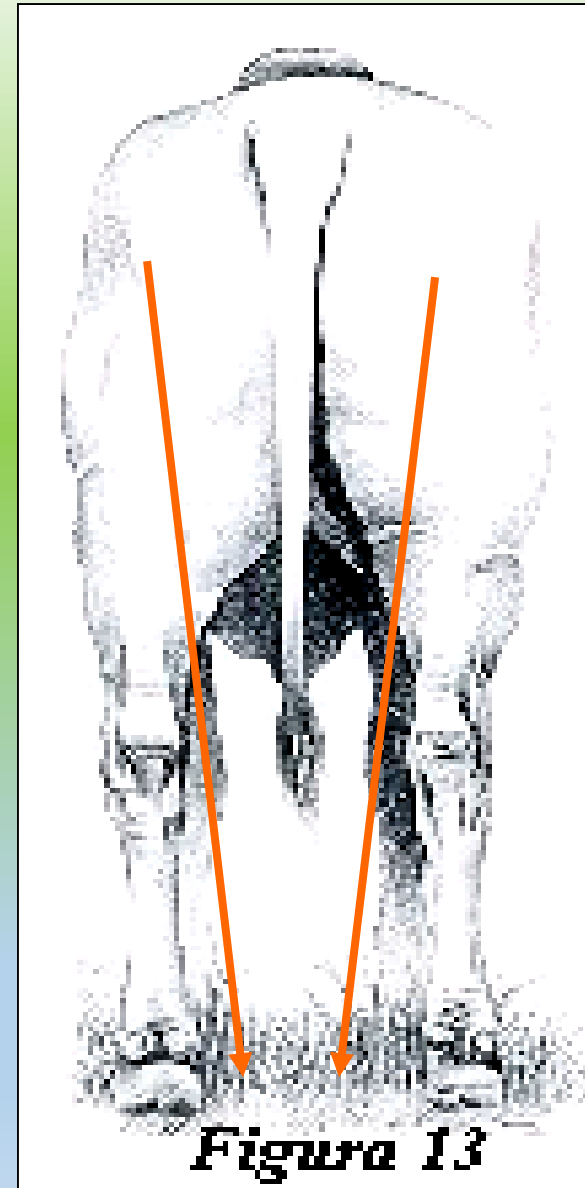
☺ Aprumos vistos de trás



Aprumos corretos



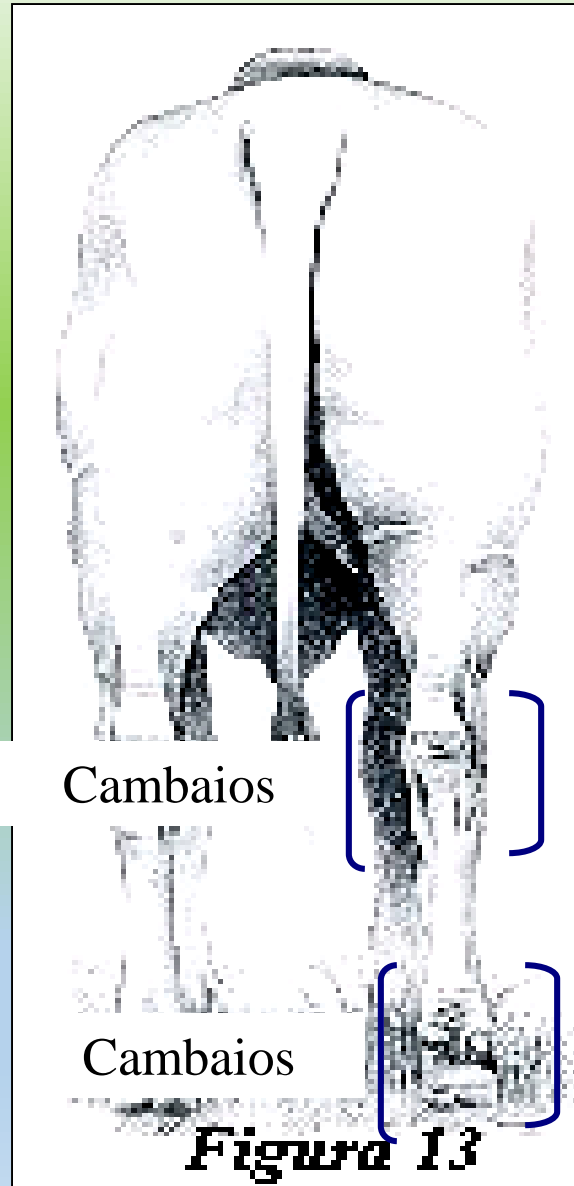
Aberto de trás



Fechado de trás

😊 Aprumos vistos de trás

LABE



Cambaios

Arqueados

Cambaios

Arqueados

Figura 13

Exame dos Aprumos

LABE



Importância dos Aprumos nos Bovinos

LABE

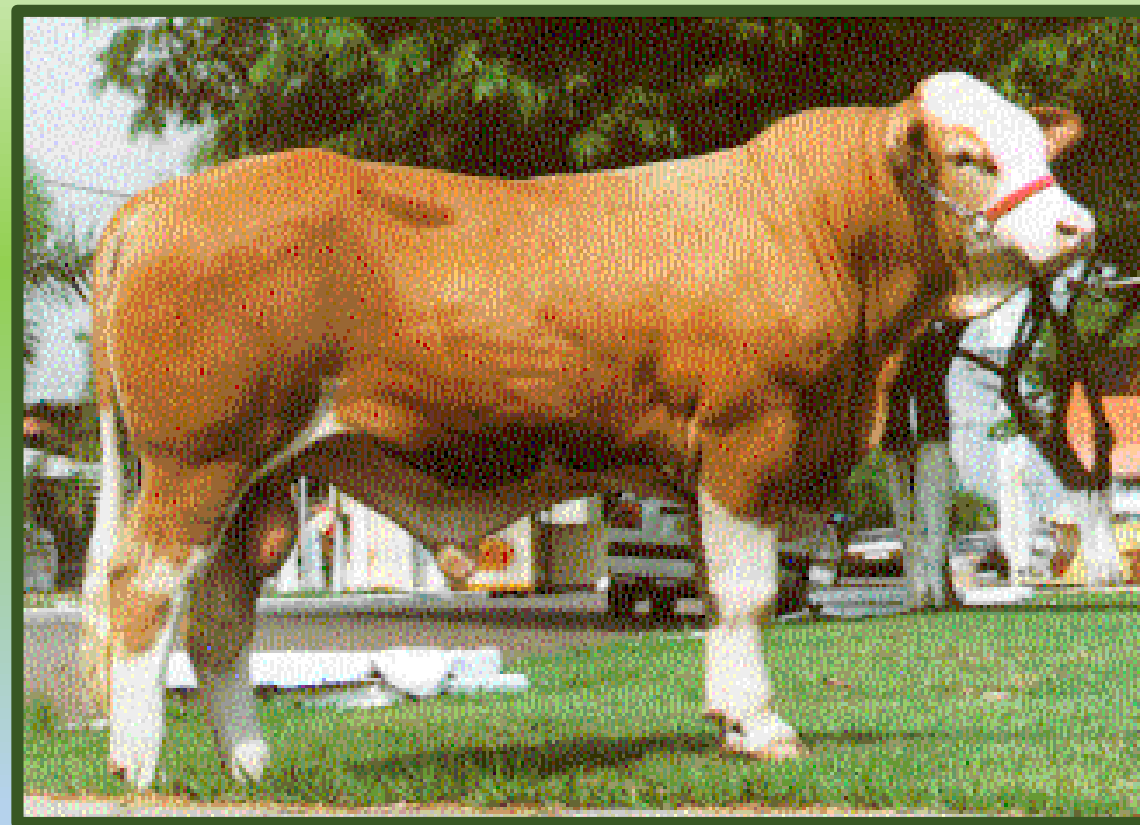


Importância dos Aprumos nos Bovinos

LABE



“O bem-estar deles também depende de bons aprumos”



titto@usp.br