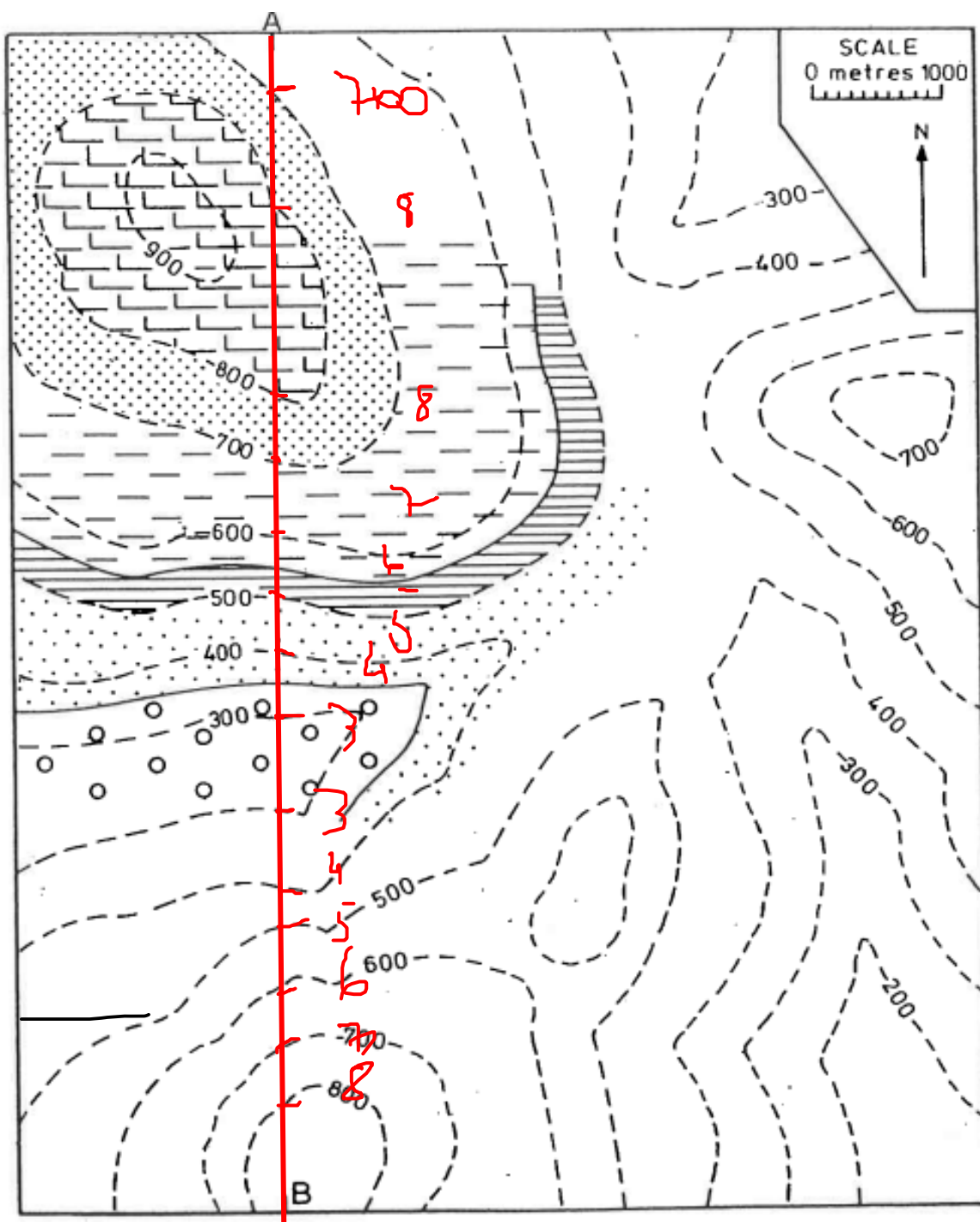


Geologia Geral – Sistema Terra

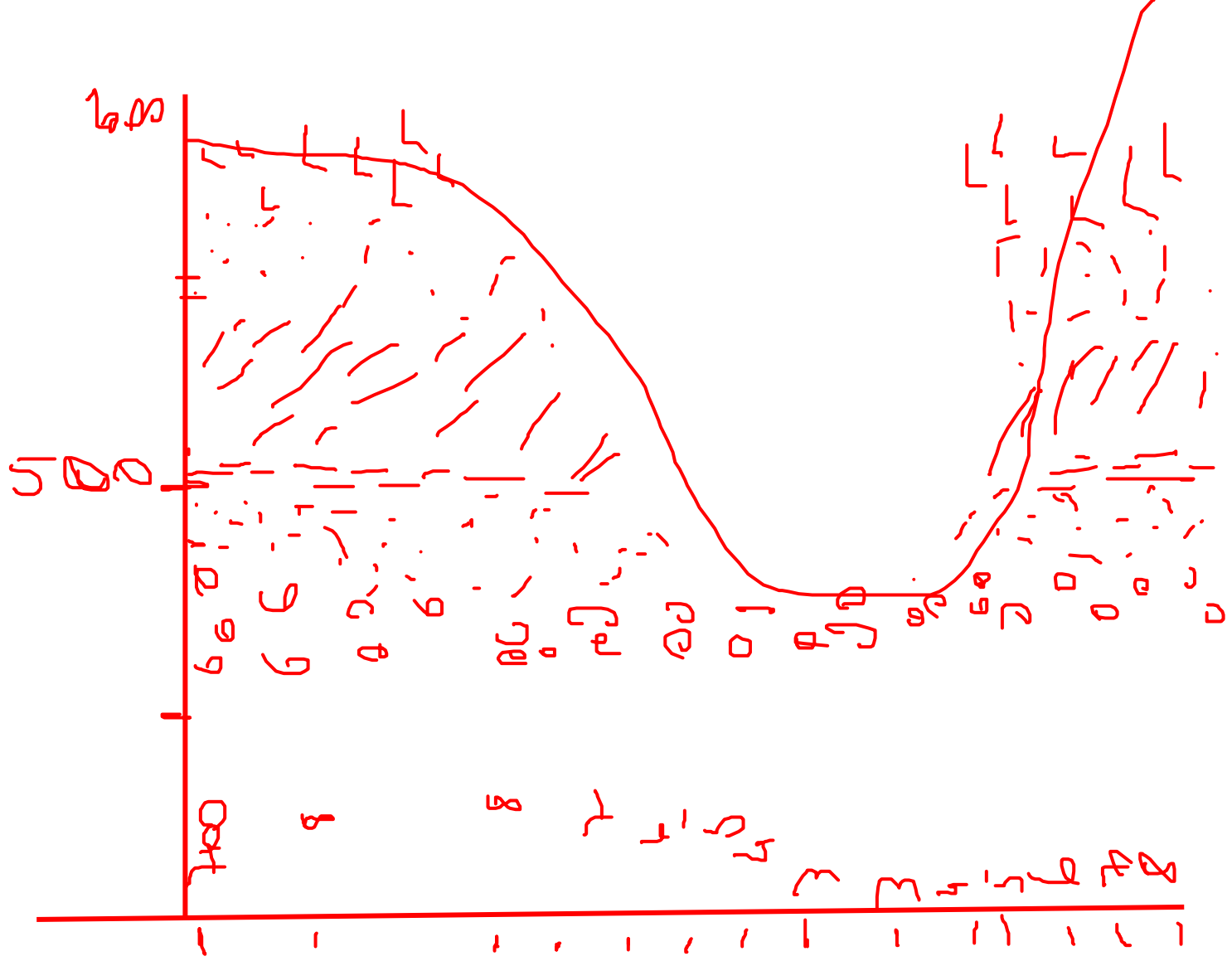
Prática com mapa geológico

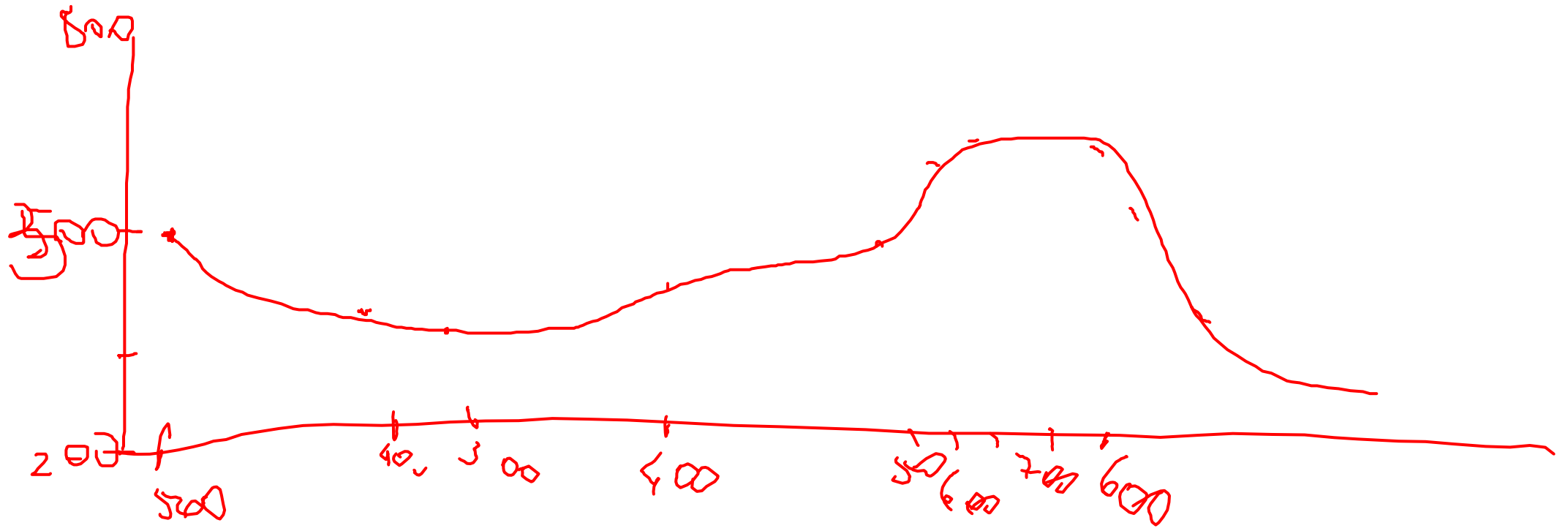
Camadas horizontais

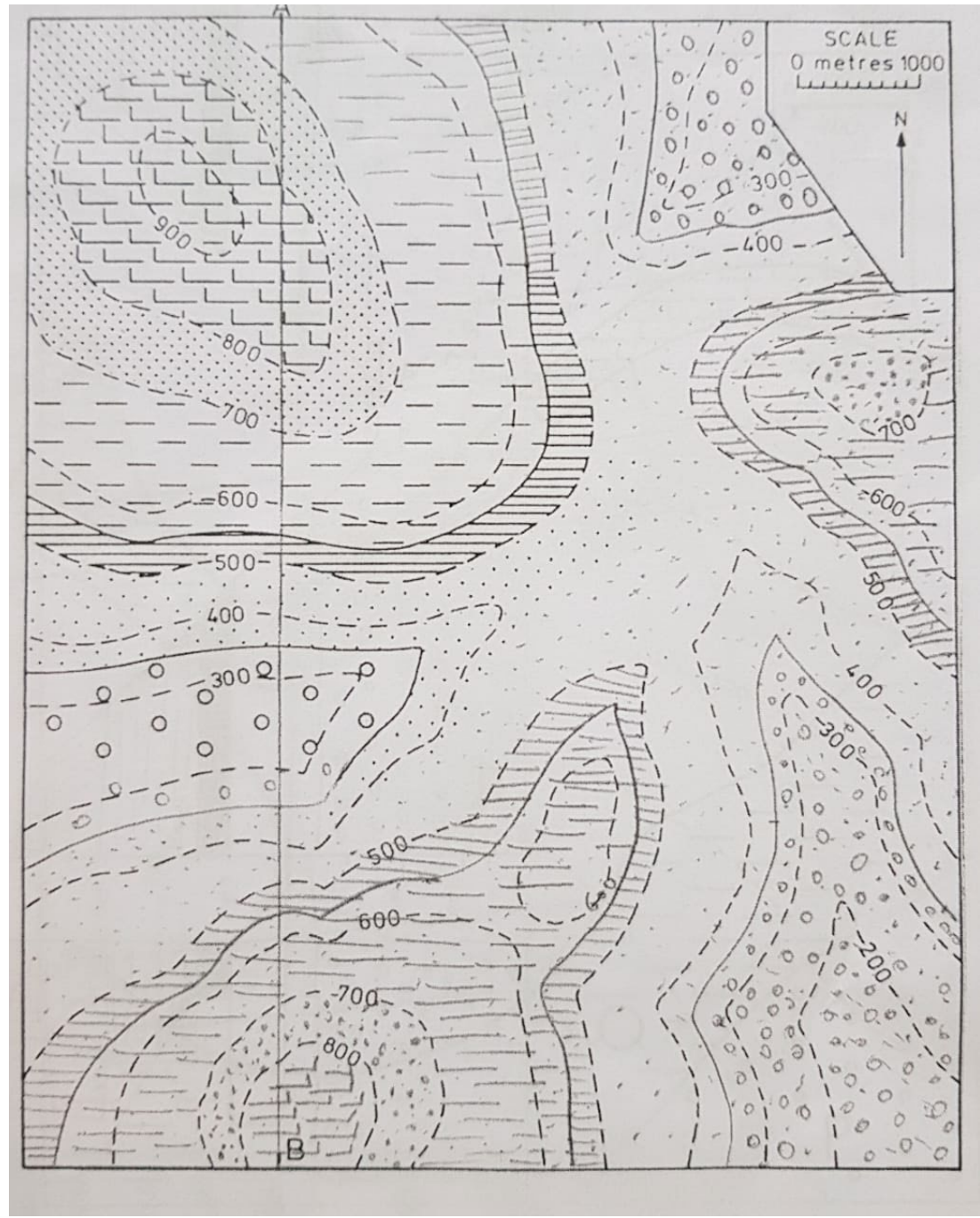


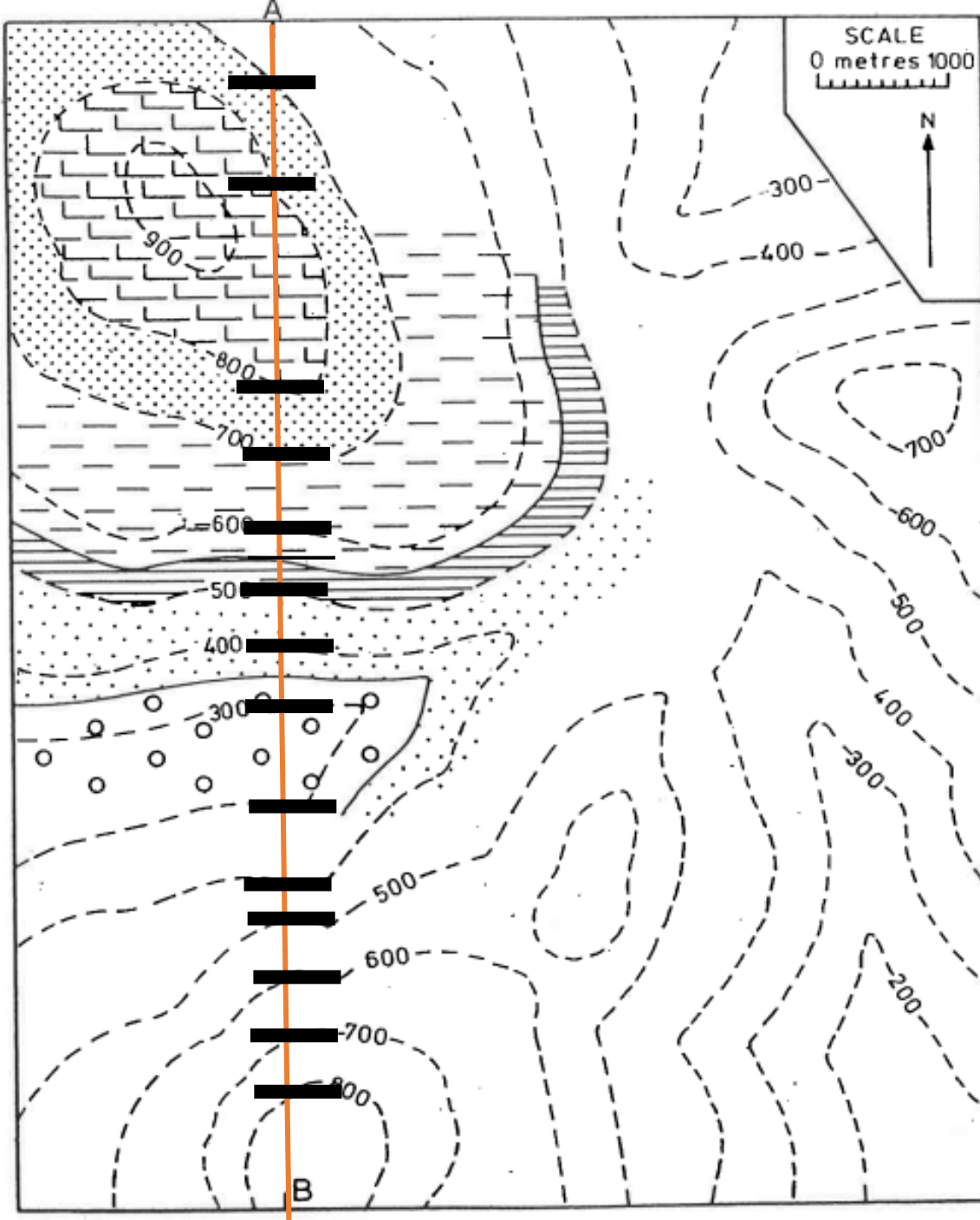
Contatos geológicos entre as unidades litológicas coincidem ou são paralelos às curvas de nível – **camadas horizontais**

- 1) Complete traçado dos contatos litológicos ao longo de todo mapa
- 2) Confeccione uma coluna estratigráfica na escala 1:10.000
- 3) Confeccione uma seção geológica entre os pontos A e B



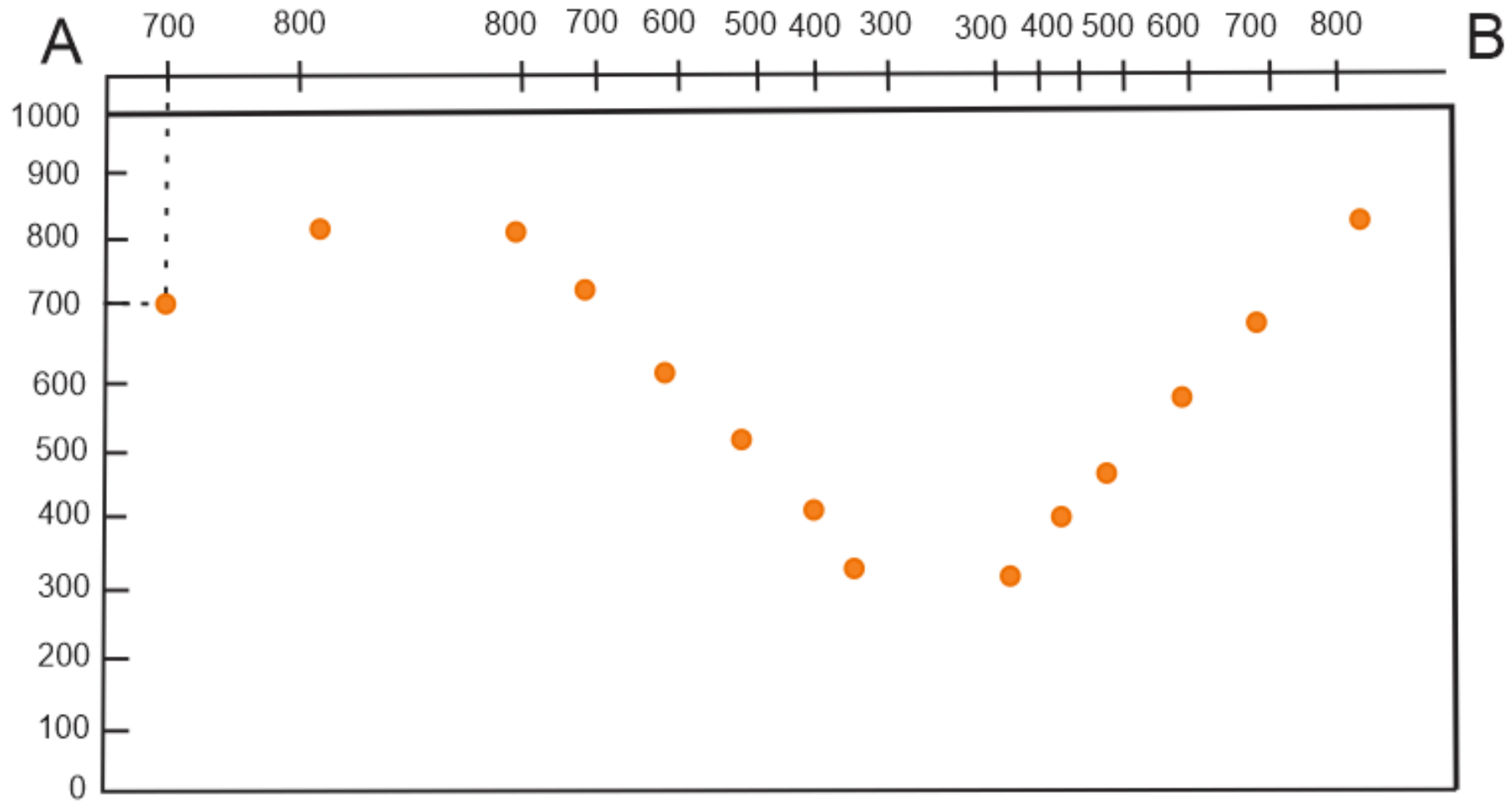






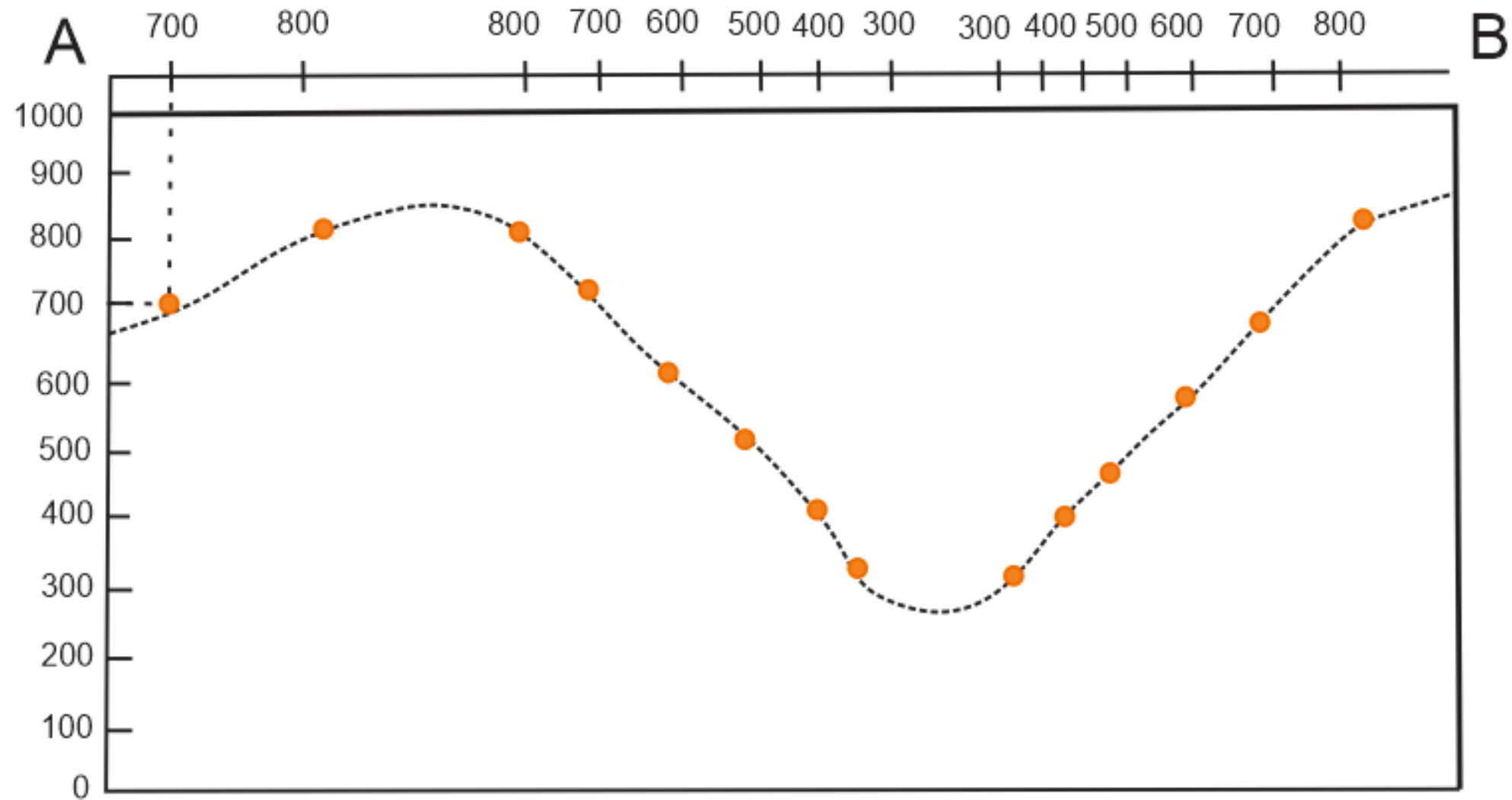
Marcar linhas de cota e traçar **perfil topográfico!**

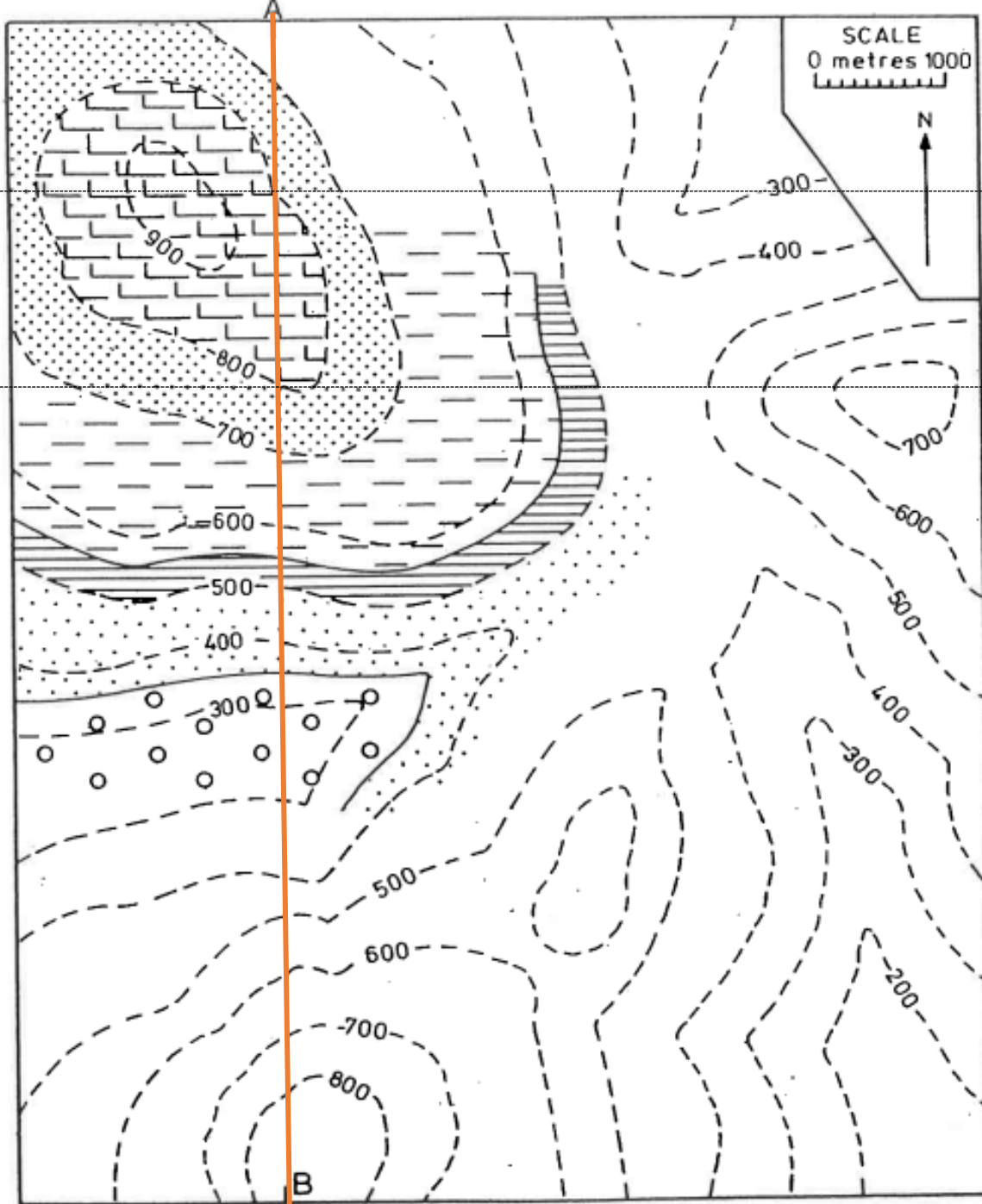
Escala vertical = escala horizontal



Colocar orientação!!

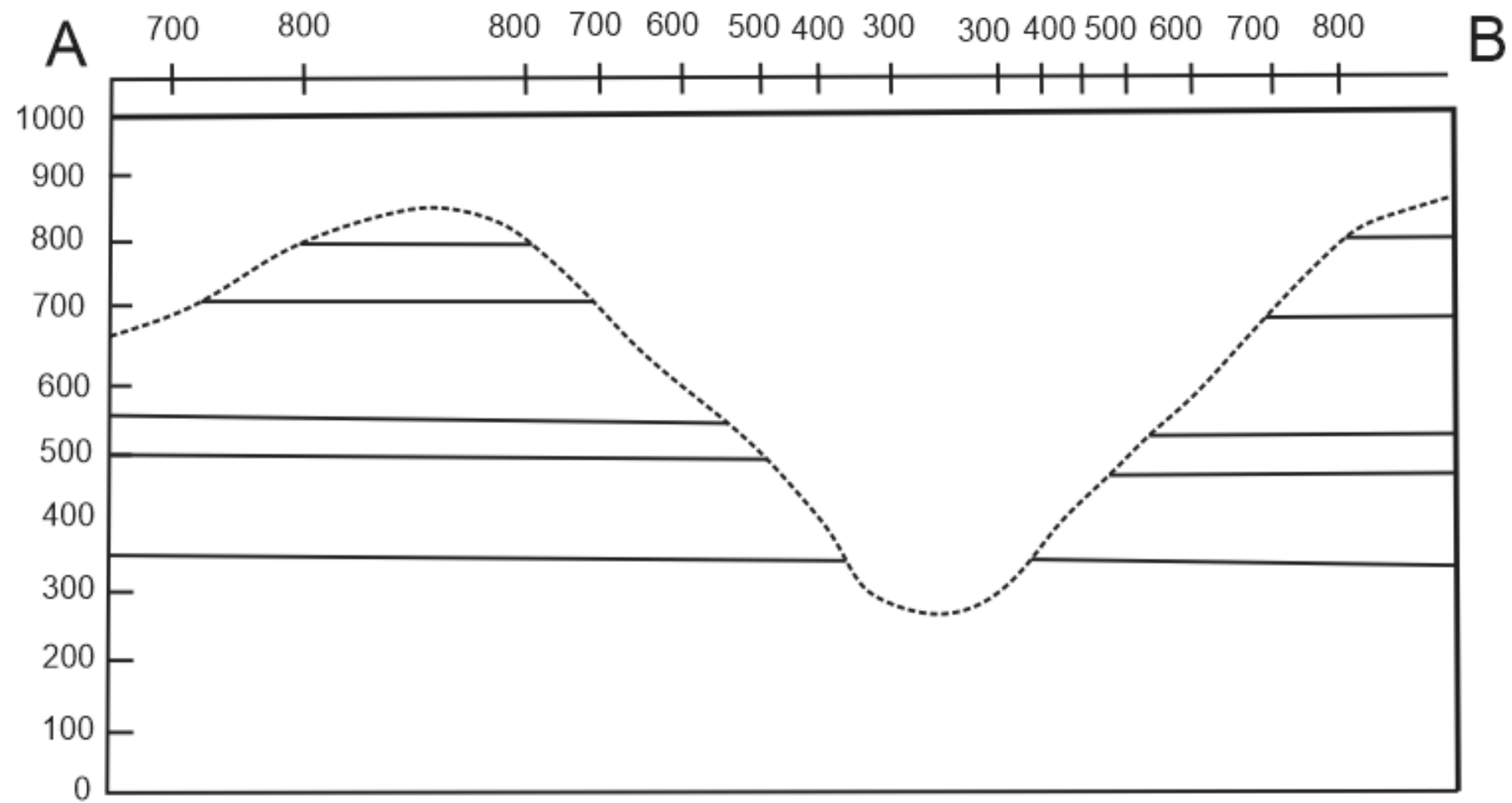
Perfil N-S

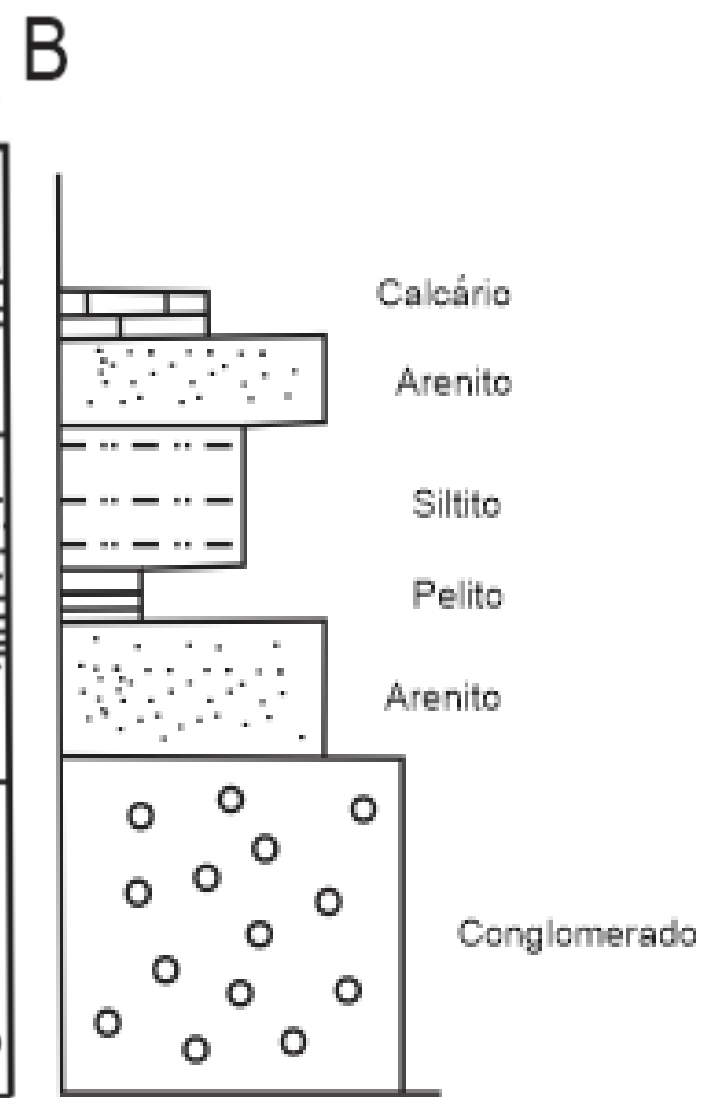
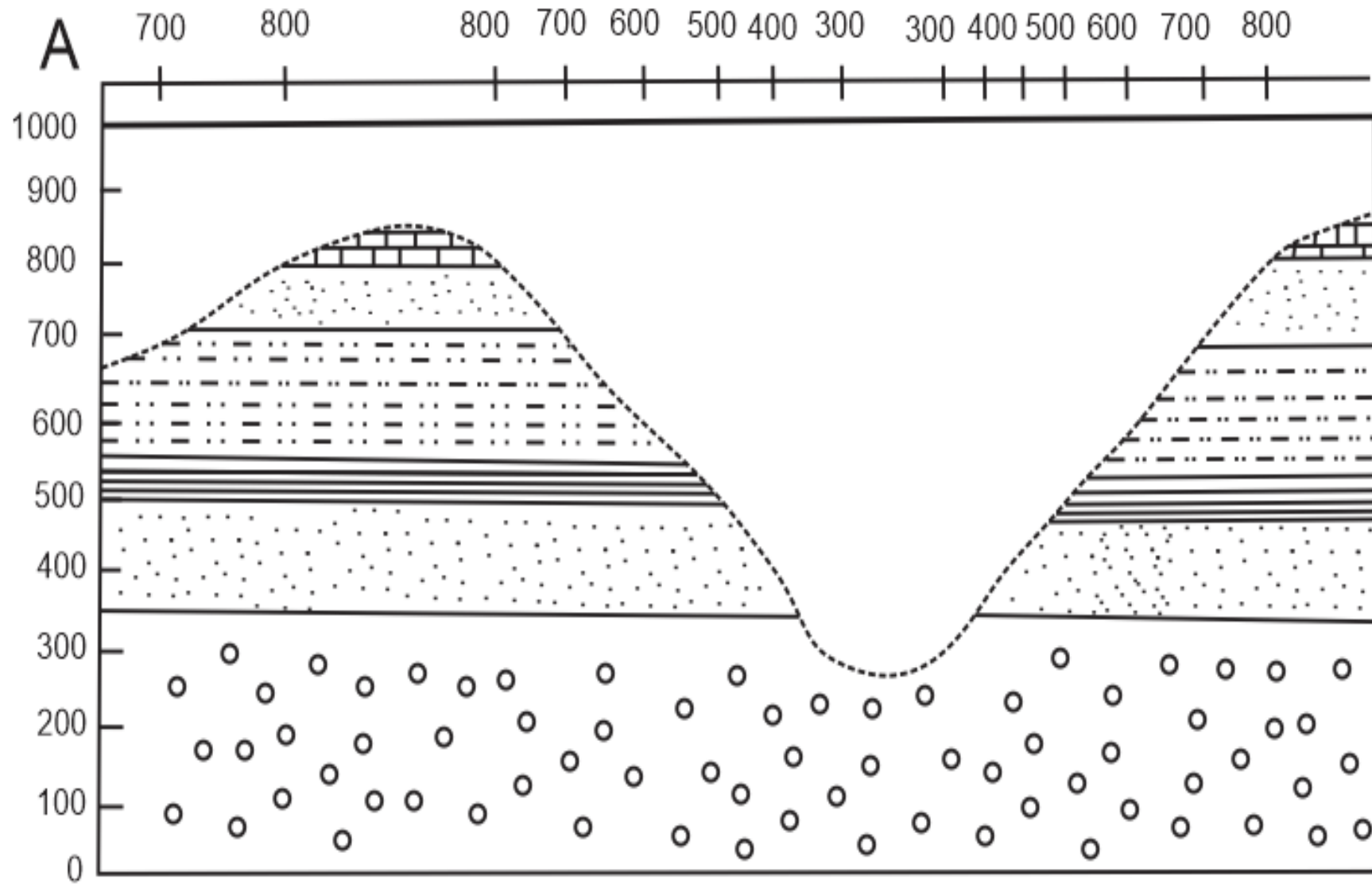




Espeçura
camada calcáριο
(Cota 900 à 800)

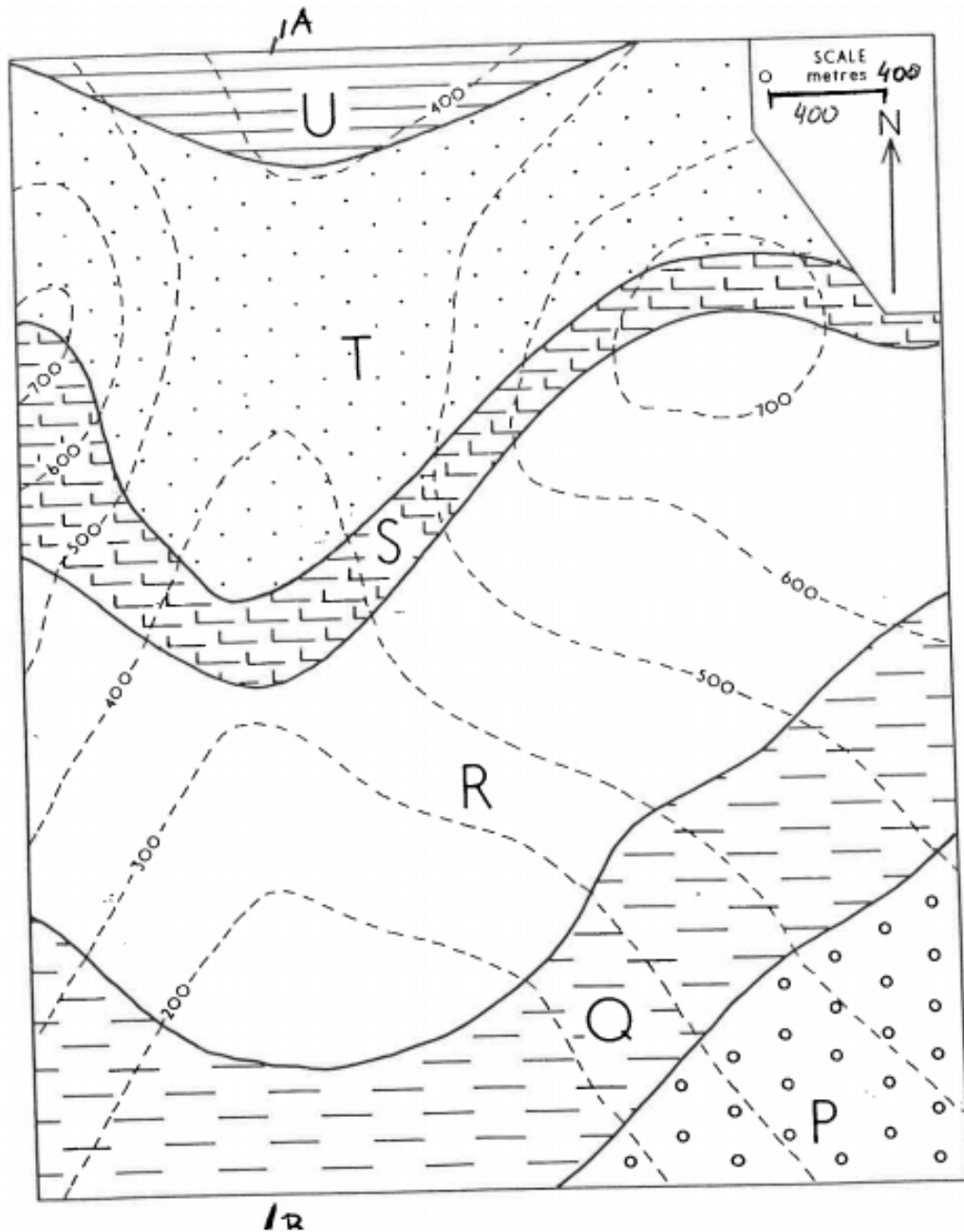
Calcular espeçura da
camada de acordo com a
esçala!





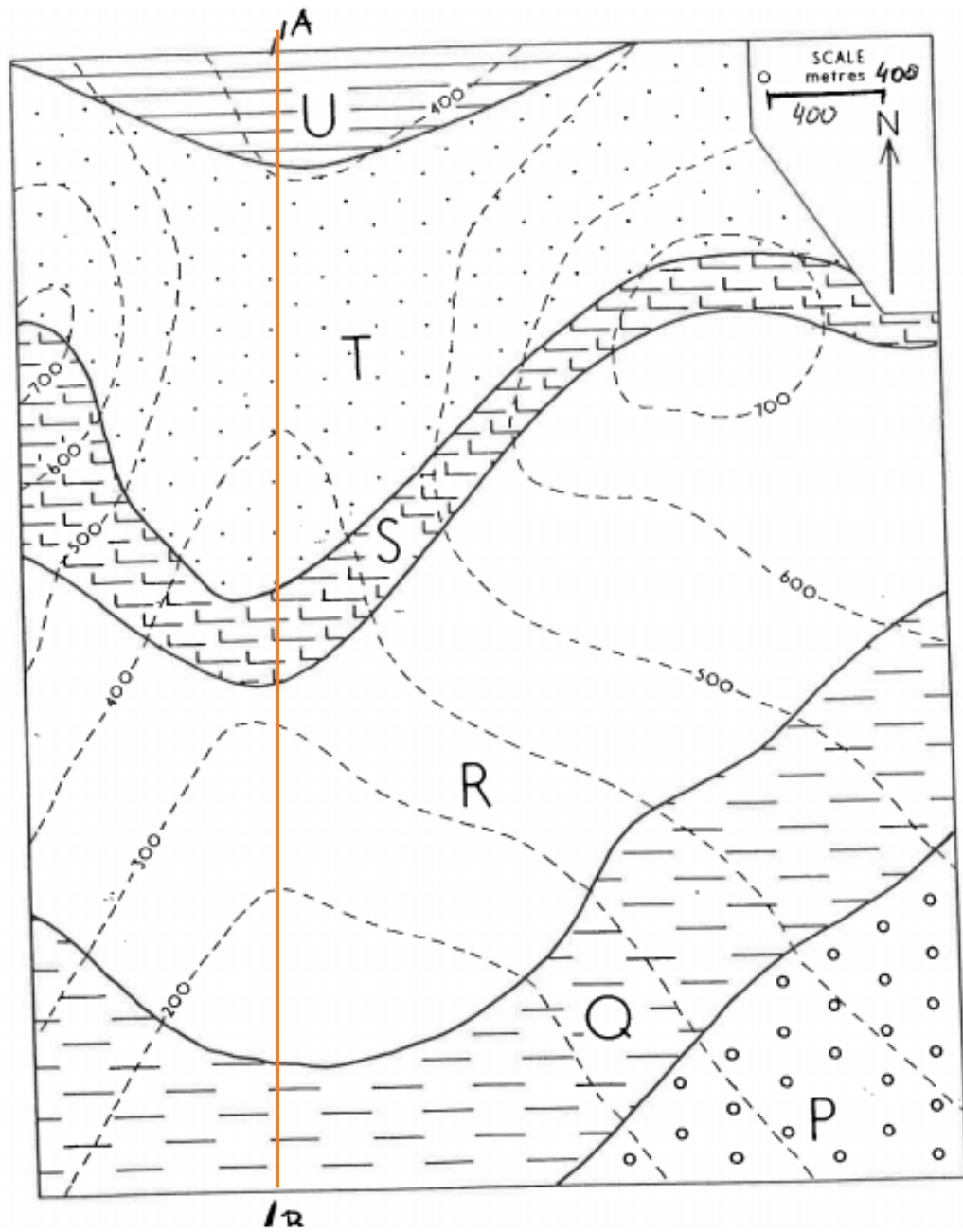
Coluna Estratigráfica

Camadas inclinadas

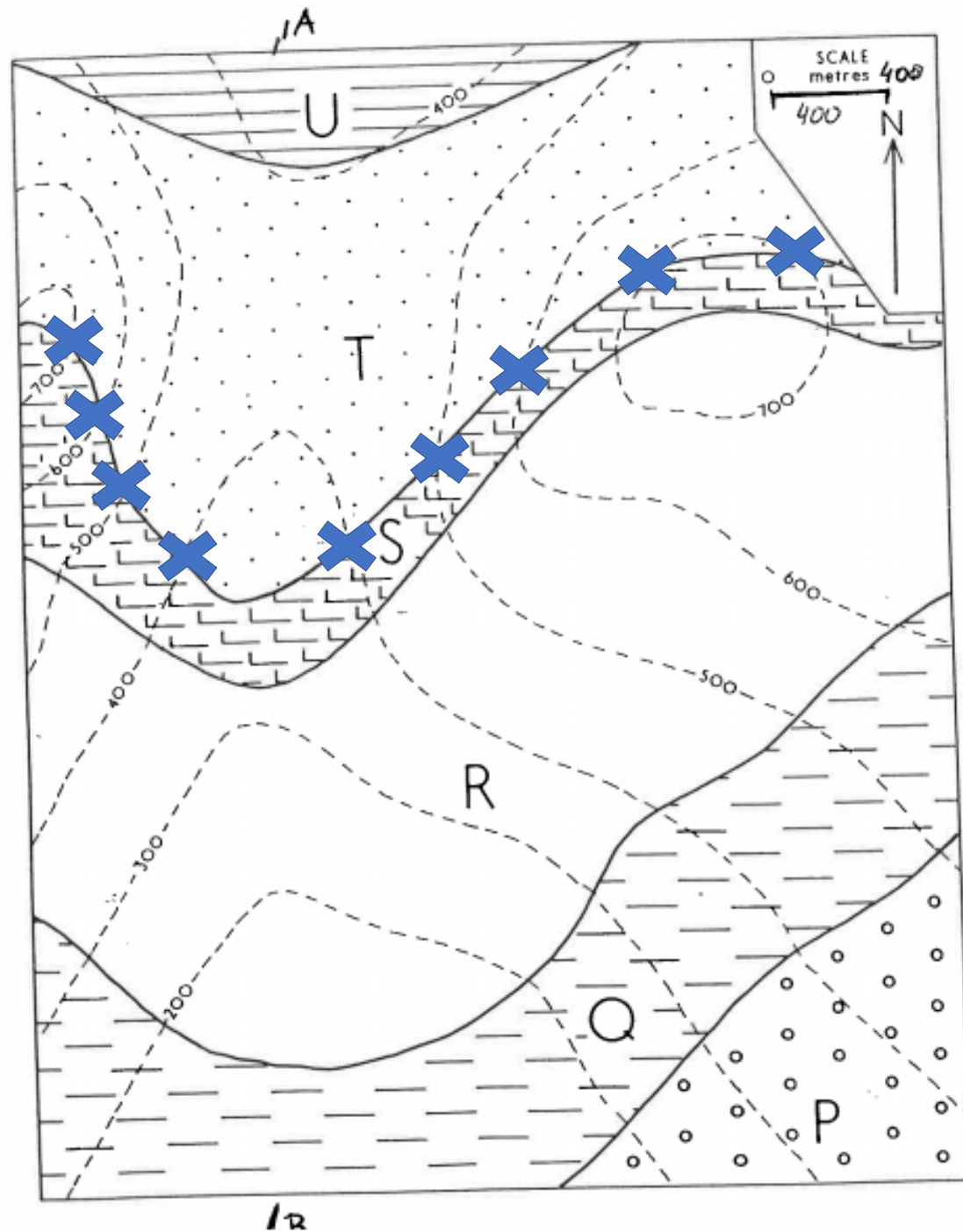


Traços dos contatos litológicos não são paralelos às curvas de nível e interceptam as linhas de mesma cota – **camadas inclinadas**

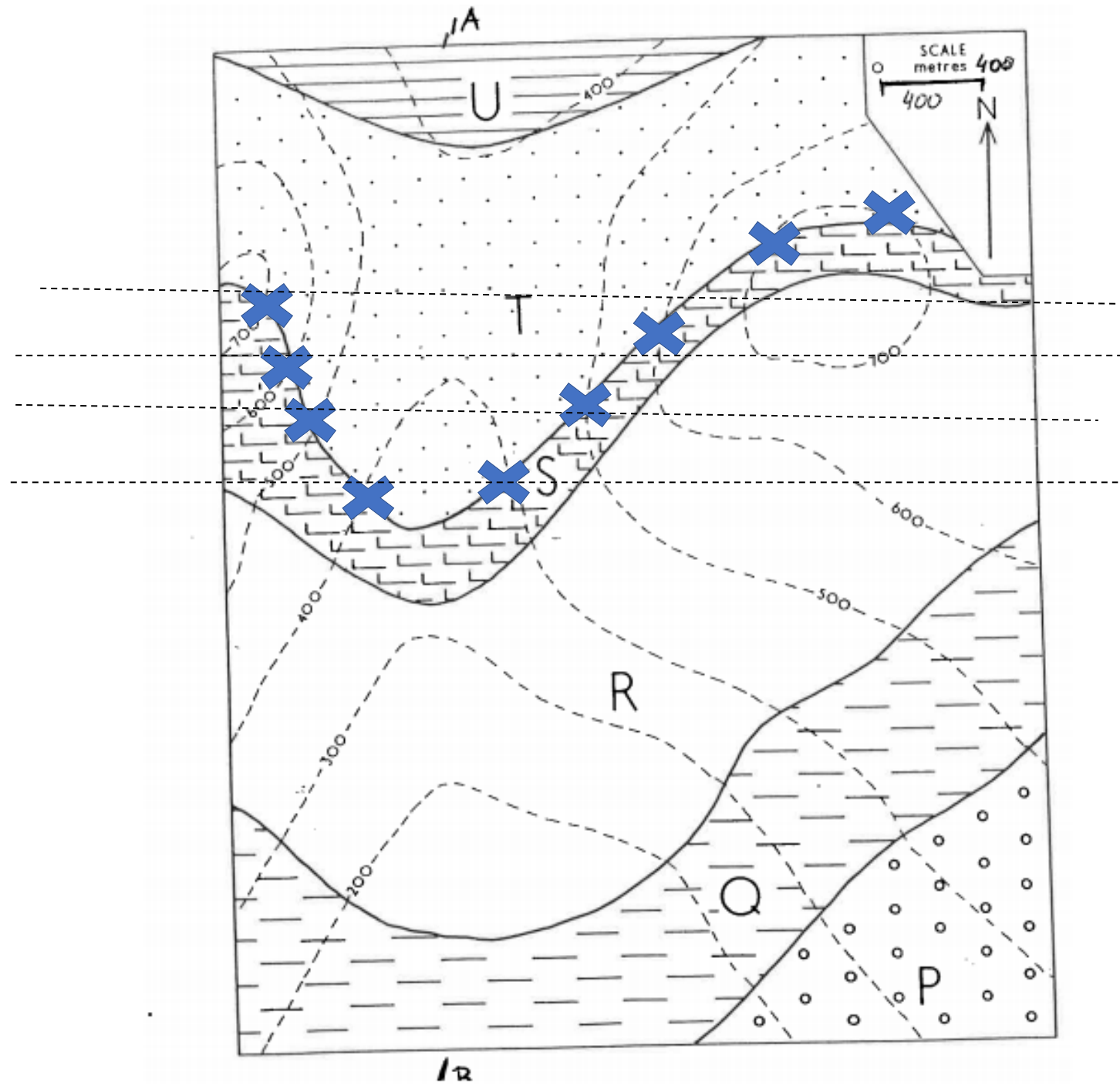
- 1) Deduza sentido do mergulho das camadas
- 2) Confeccione uma seção geológica A-B

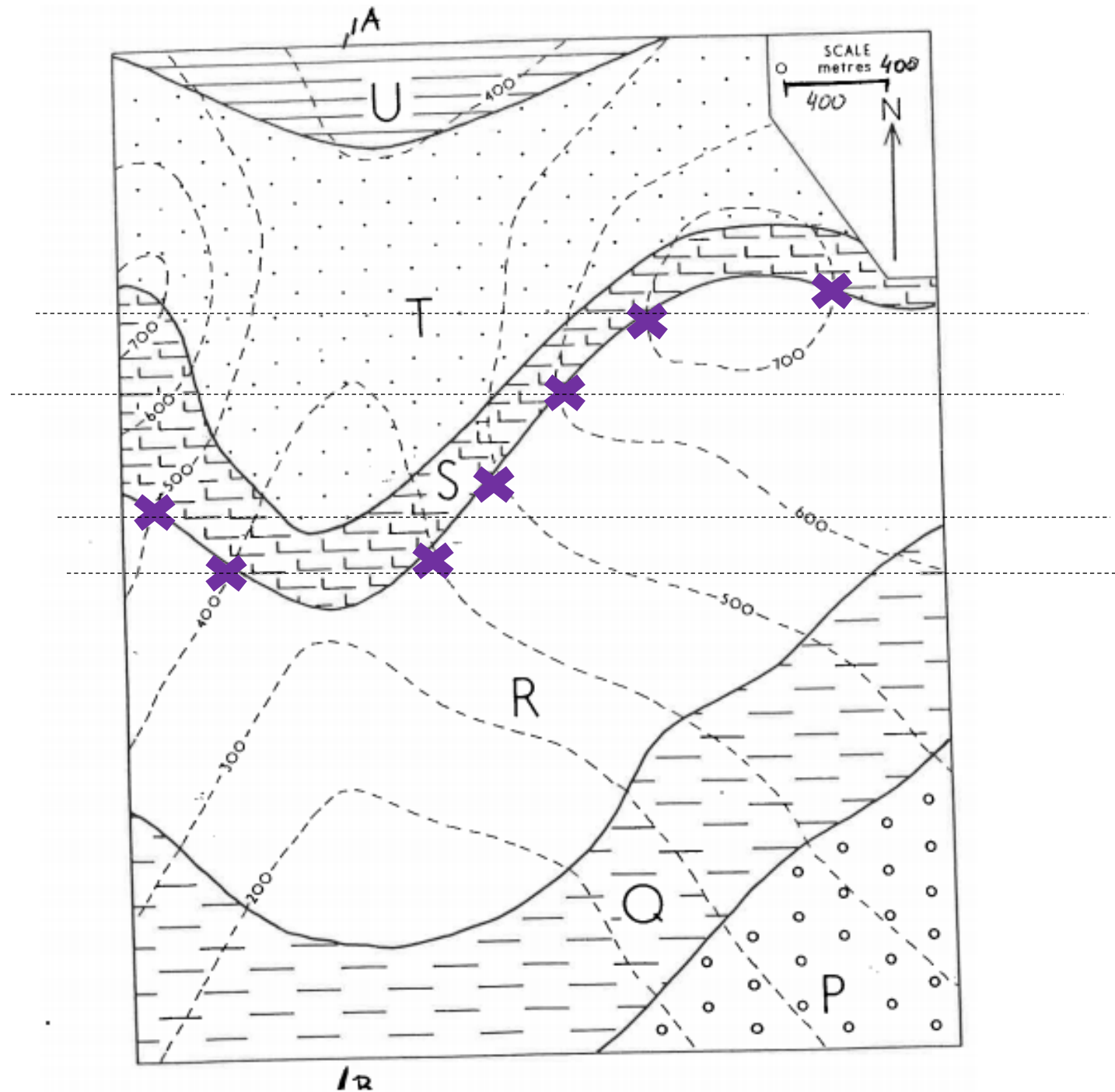


Camada S –
"guia":
Marcar onde
intercepta curvas
de nível



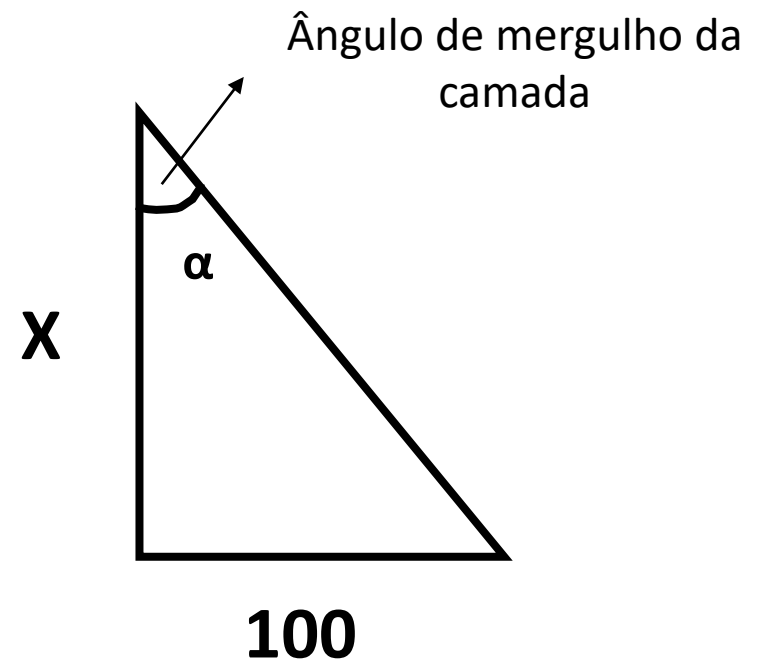
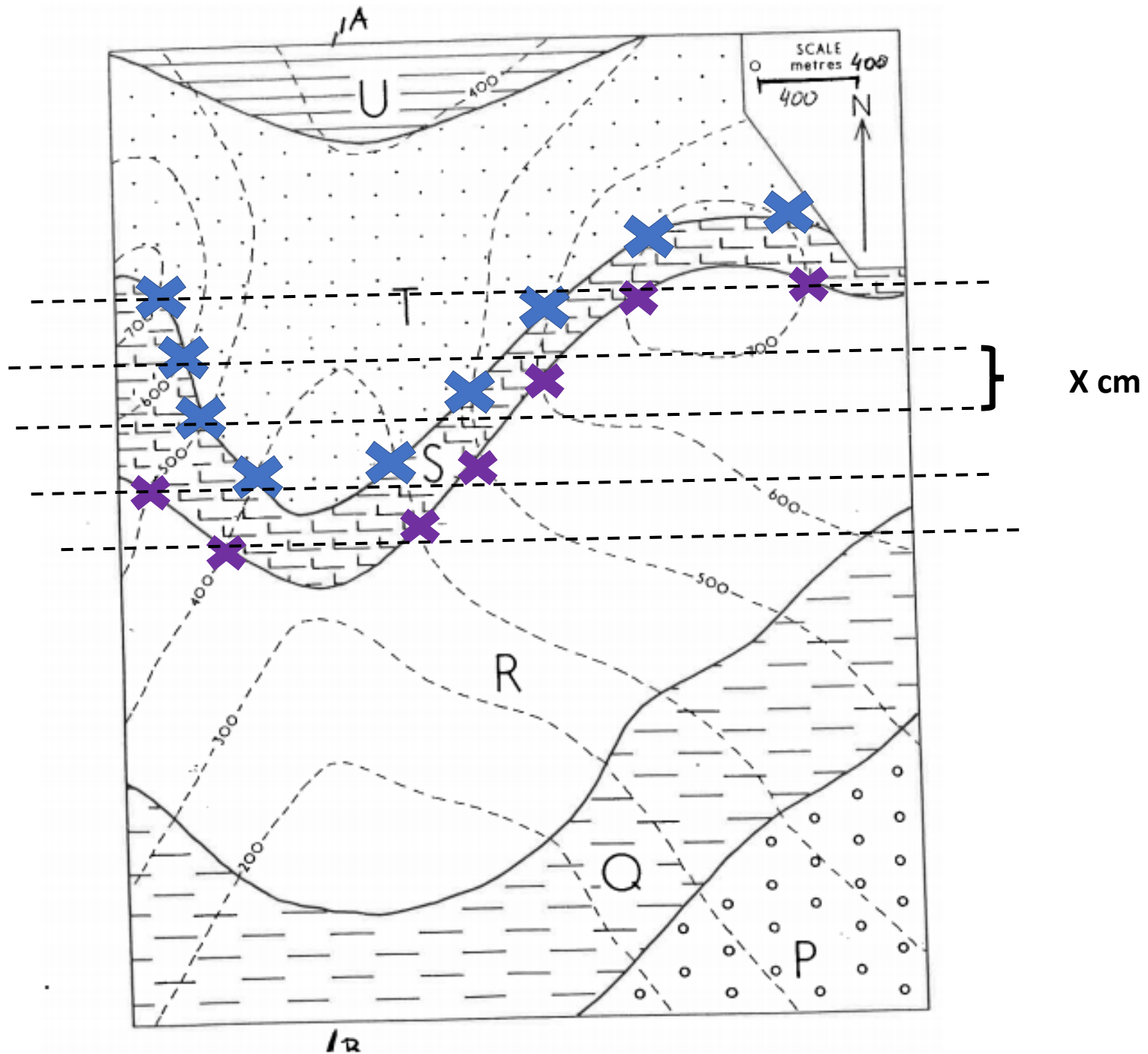
TOPO

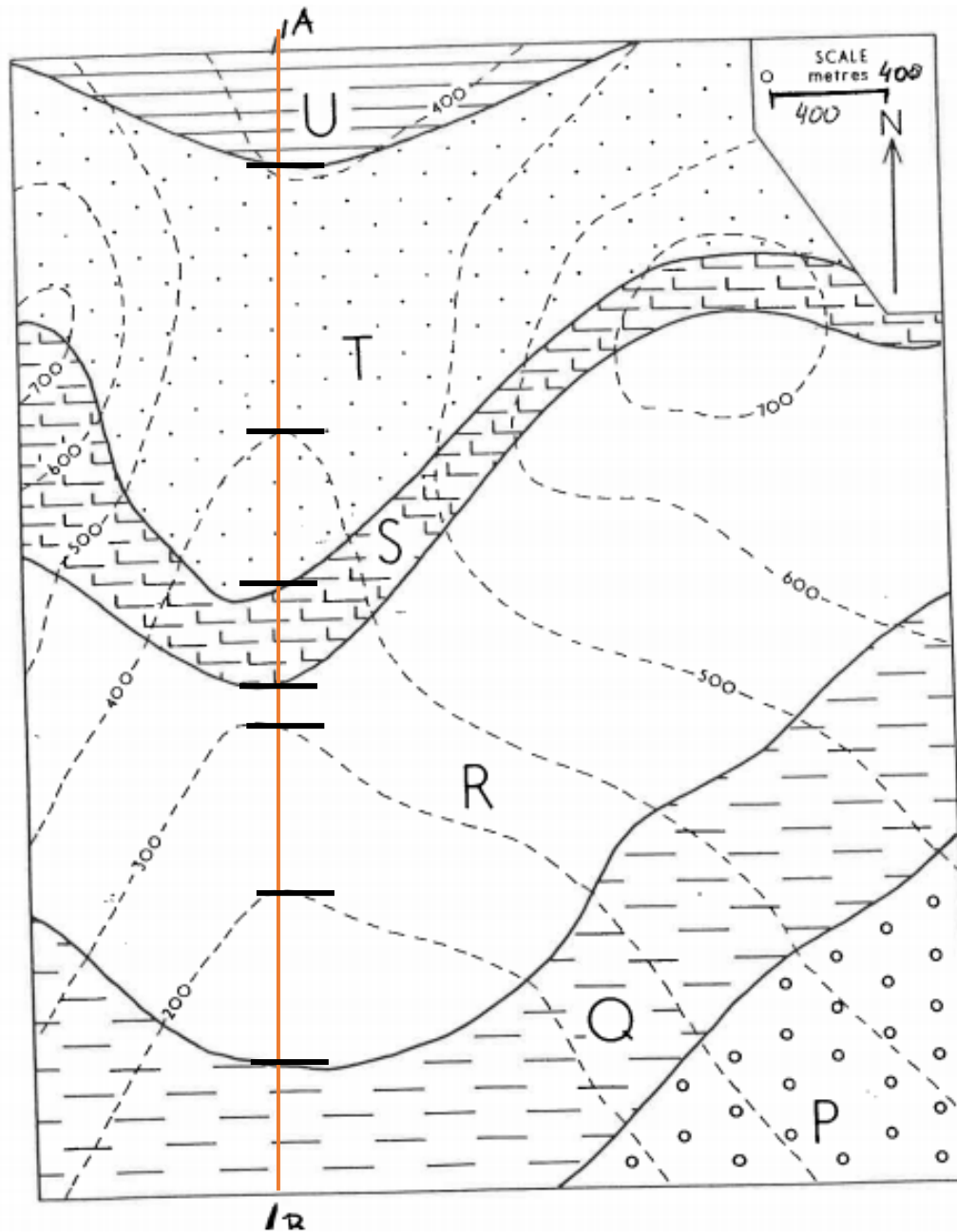




BASE

A-B





Marcar linhas de cotas e contatos entre as camadas!

