

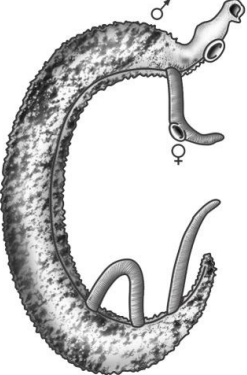
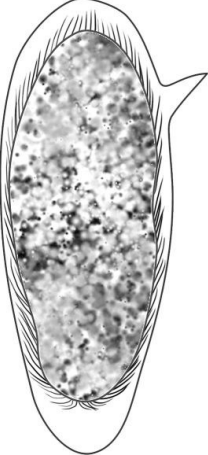
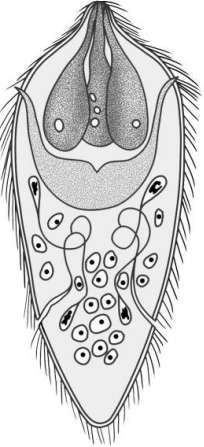

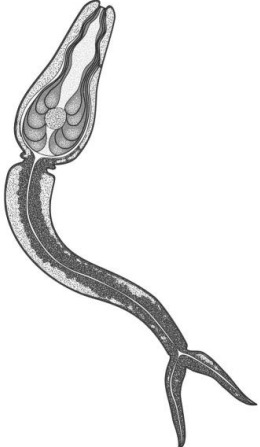
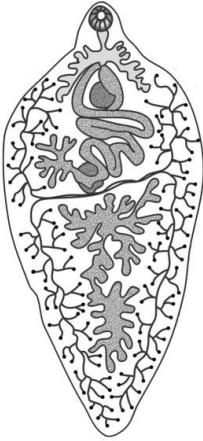
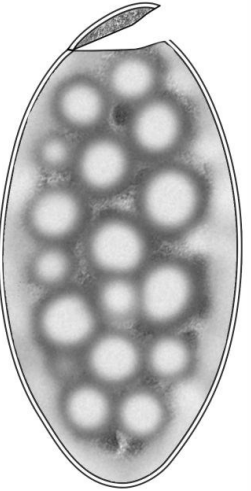
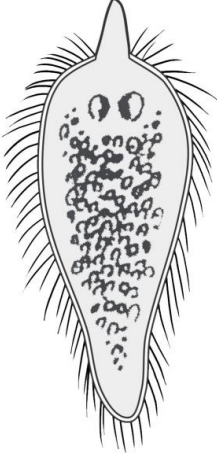
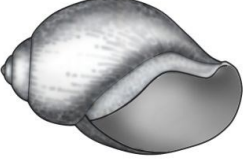

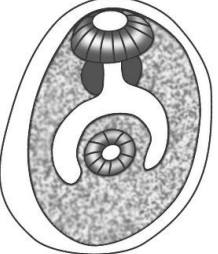
Schistosoma mansoni e a esquistossomose

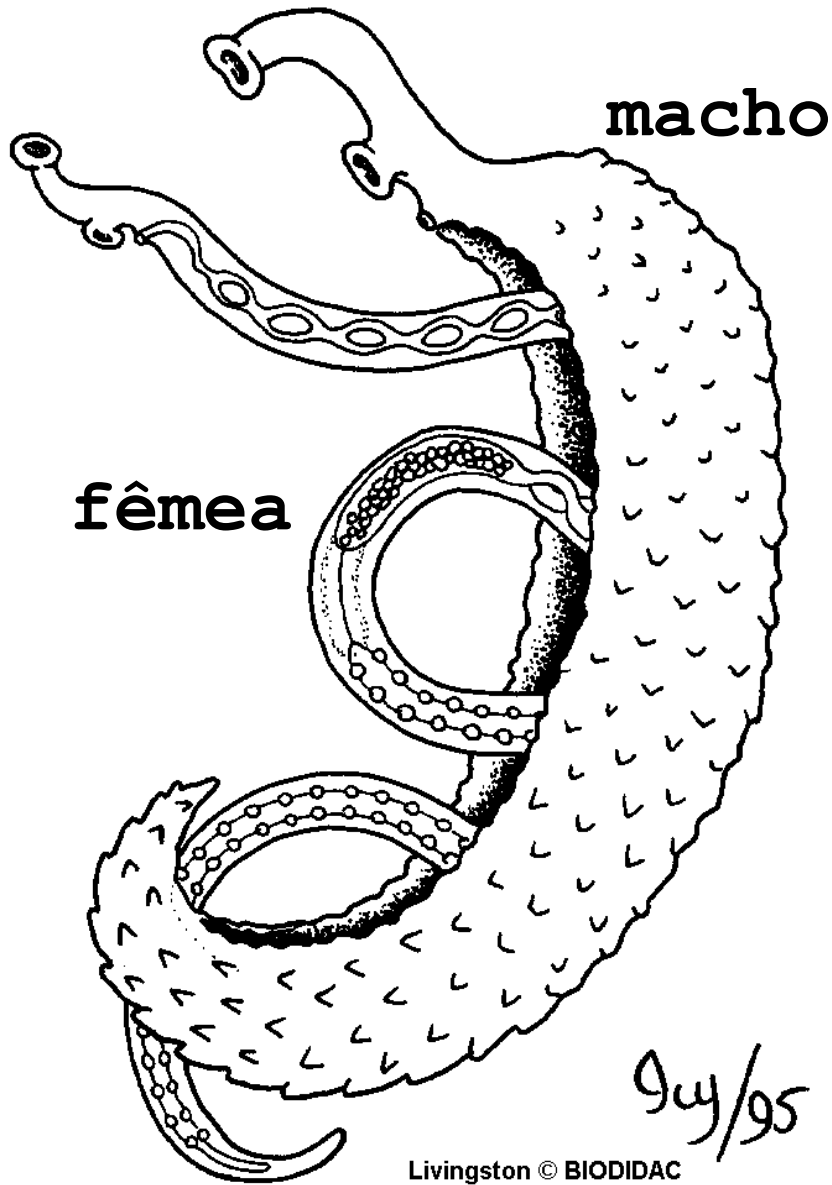
Marcelo Urbano Ferreira
Departamento de Parasitologia
Instituto de Ciências Biomédicas
Universidade de São Paulo
www.icb.usp.br/~muferrei

Trematódeos:

Vermes chatos (filo Platyhelminthes), em
forma de folha, pertencentes à classe
Trematoda

Trematódeos digenéticos de importância médica no Brasil

	Verme adulto	Ovo	Miracídio	Hospedeiro intermediário	Cercária	Metacercária
<i>Schistosoma mansoni</i>						
<i>Fasciola hepatica</i>						



Schistosoma

S. mansoni

S. japonicum

S. haematobium

S. meckongi

S. intercalatum

S. malayensis

Parasitas do homem, de roedores e primatas

Distribuição global das esquistossomoses

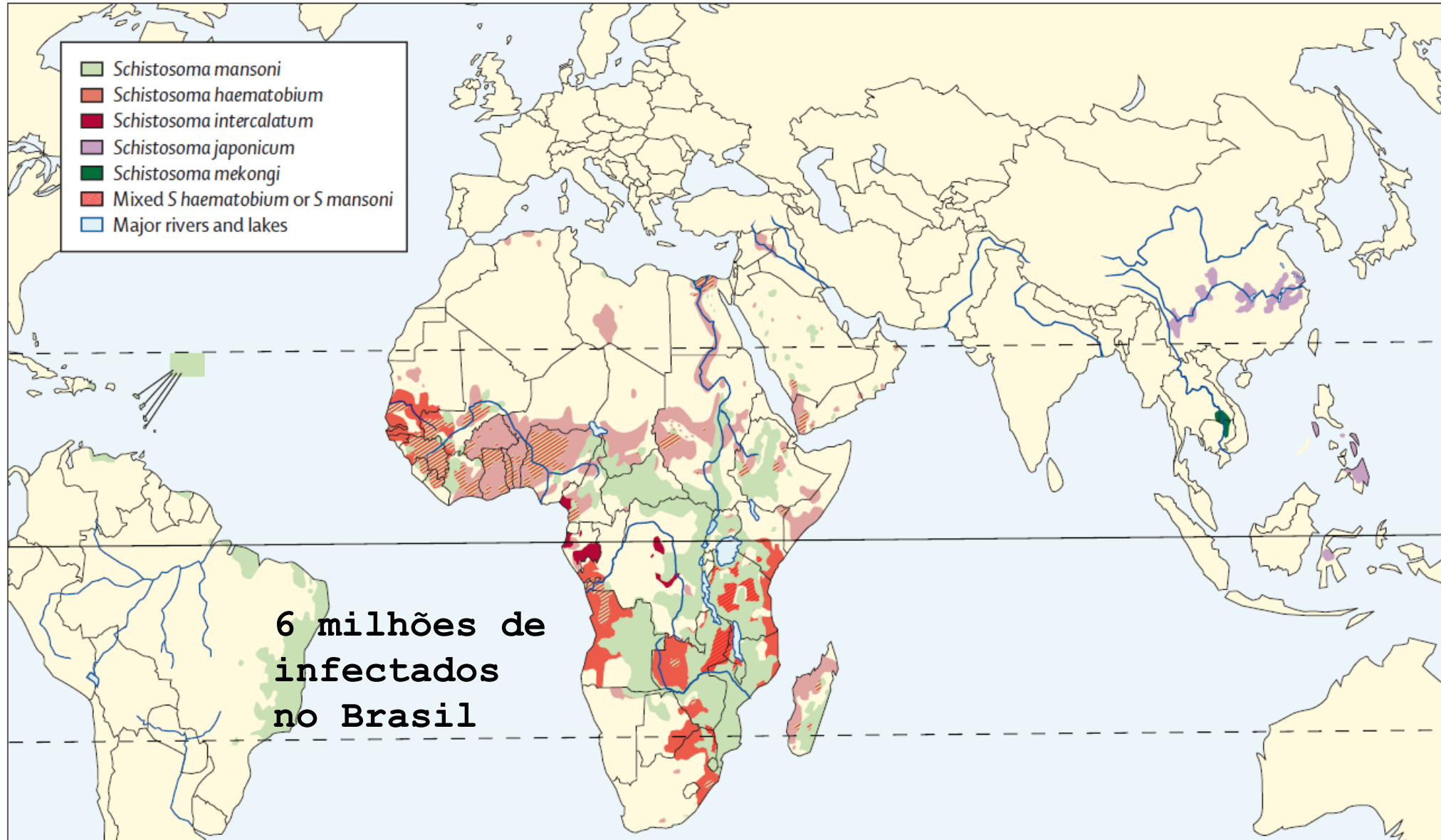
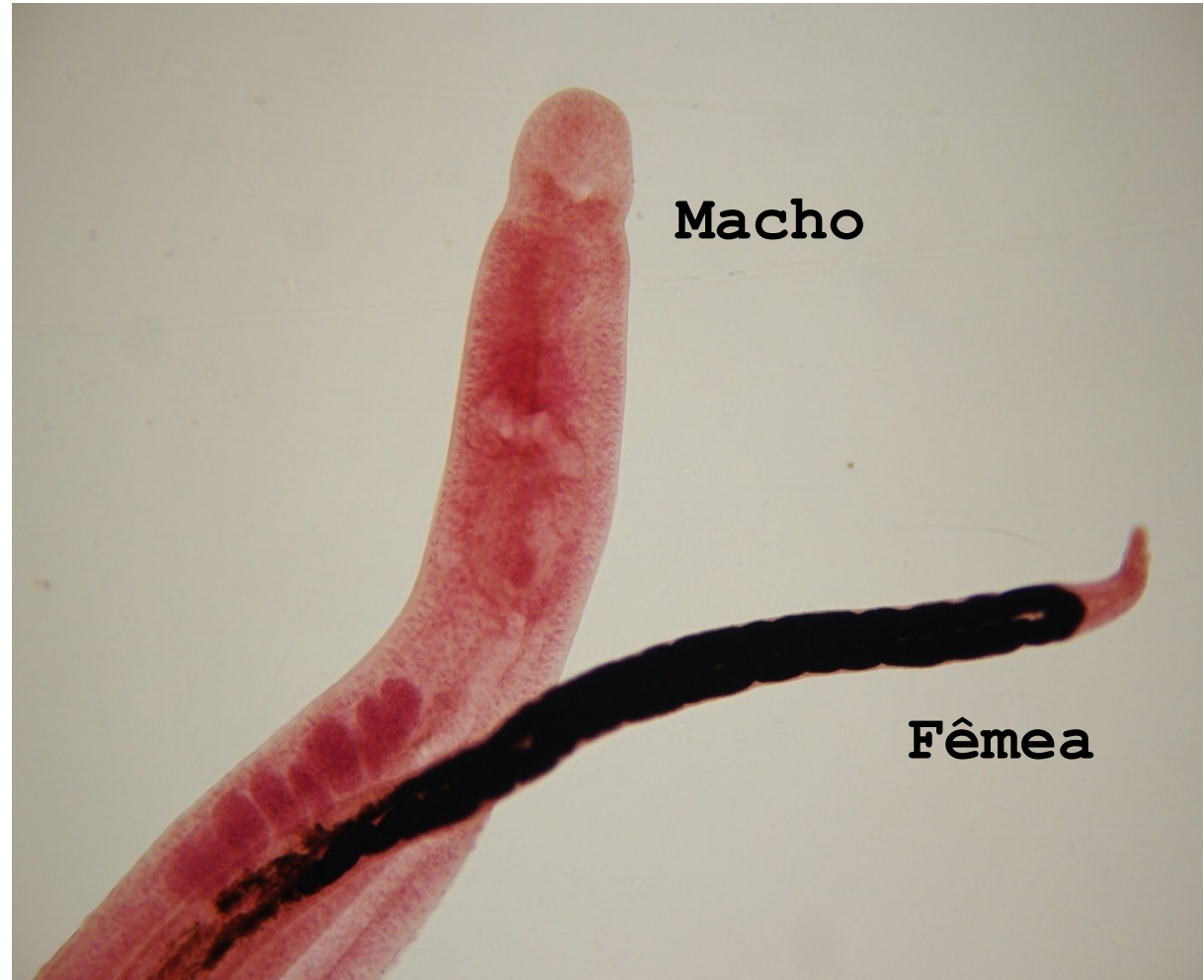
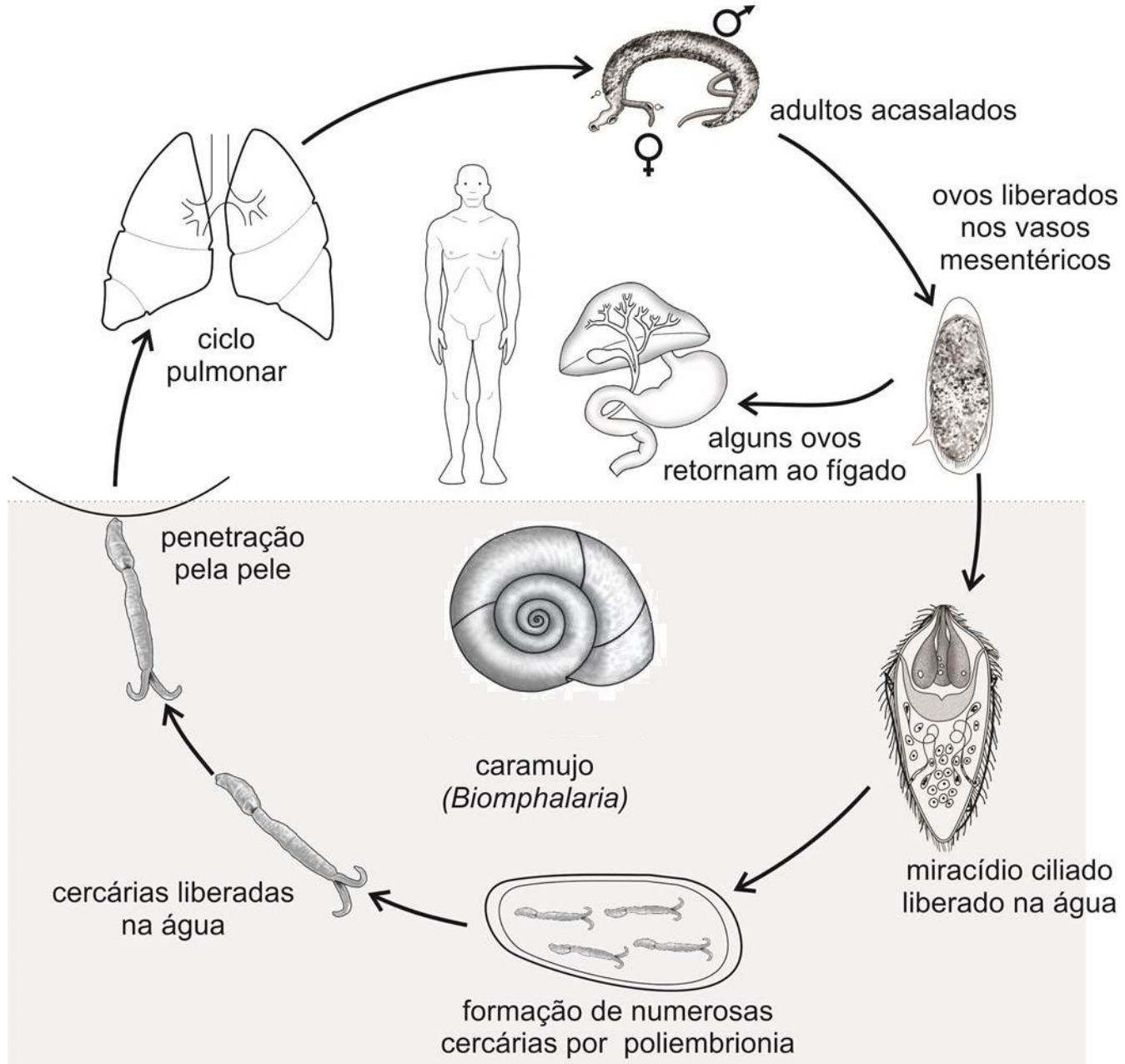


Figure 2: Global distribution of countries where human schistosomiasis is transmitted.

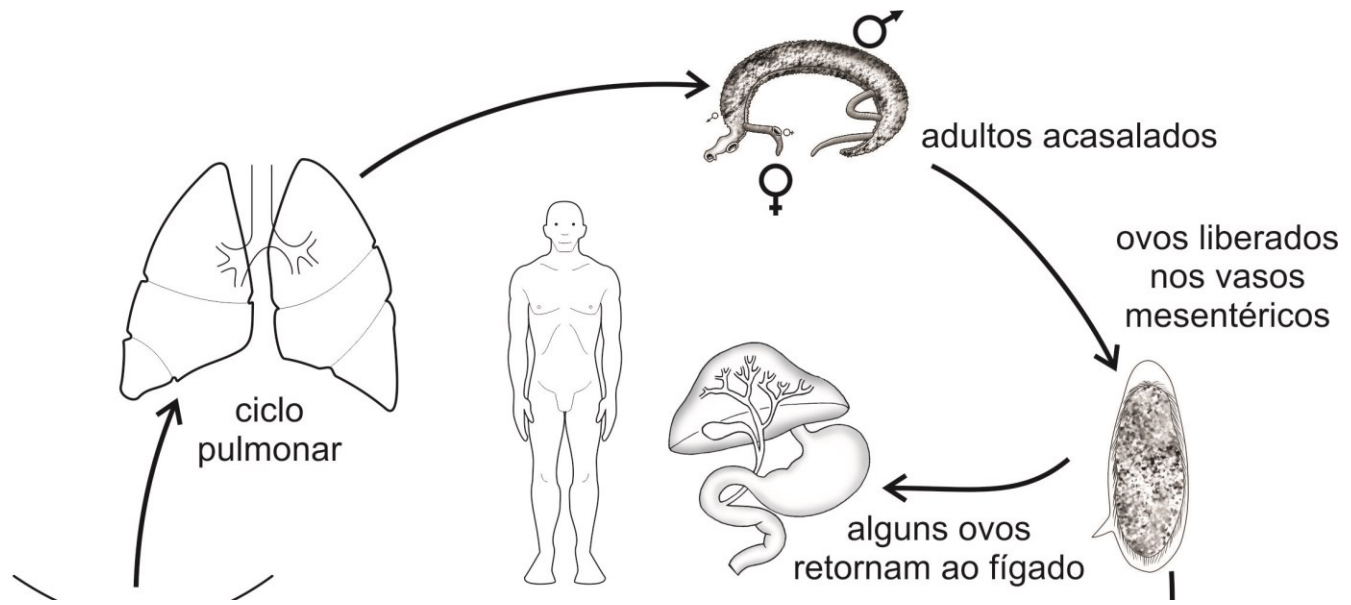
Schistosoma mansoni



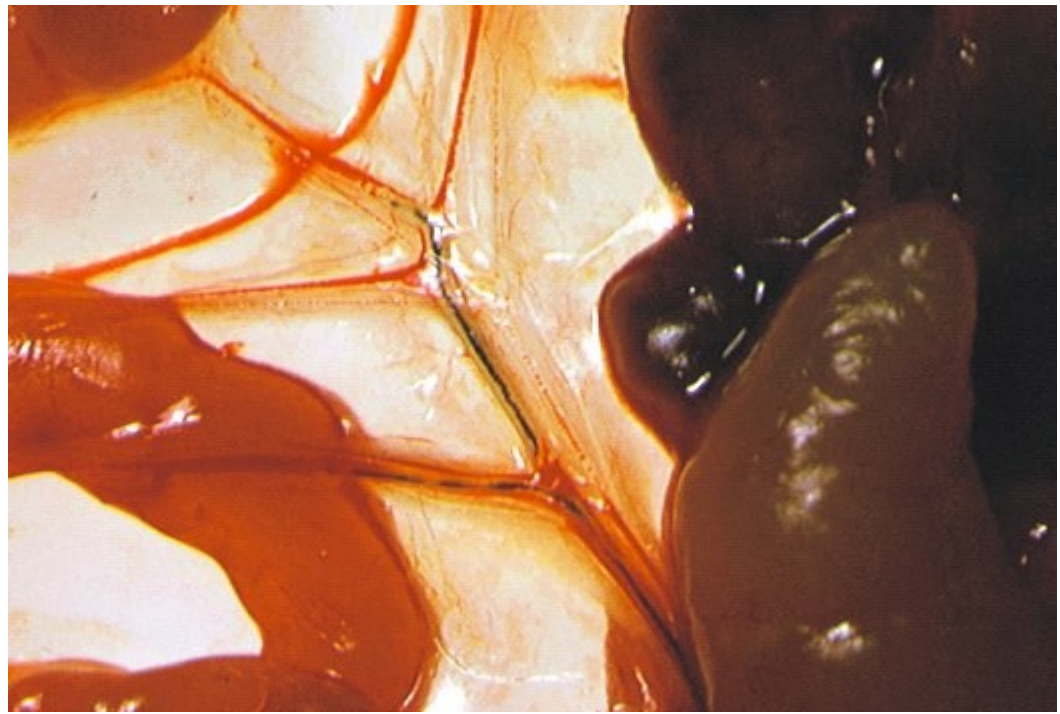
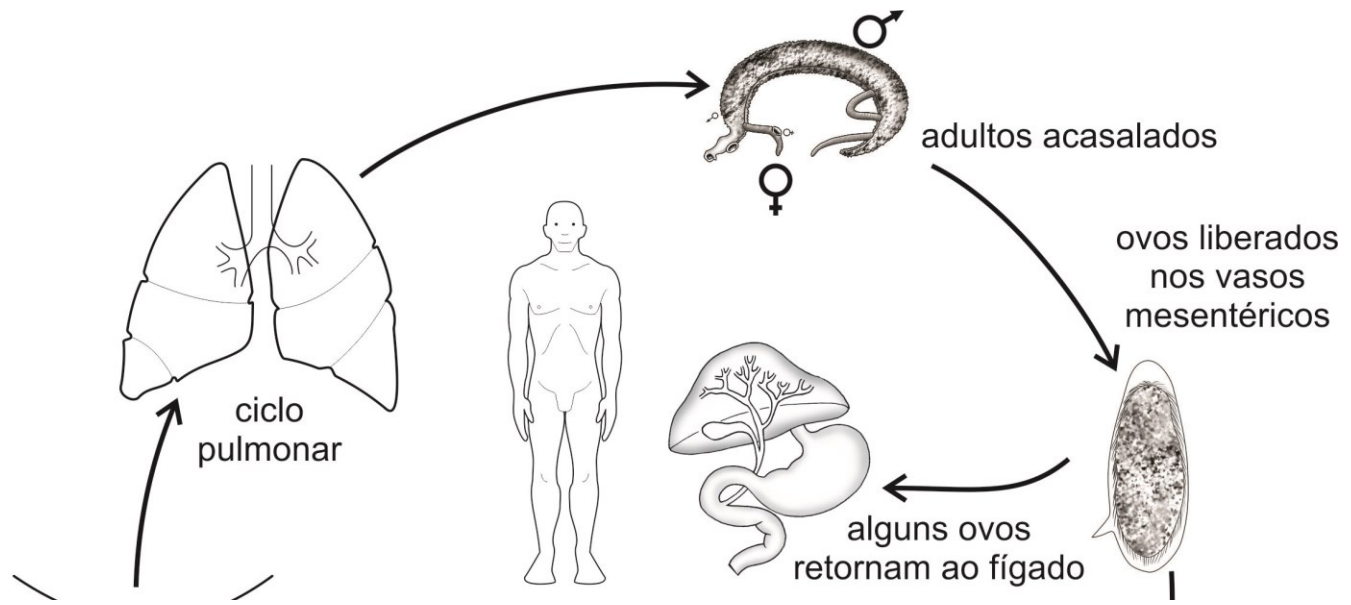
Schistosoma mansoni



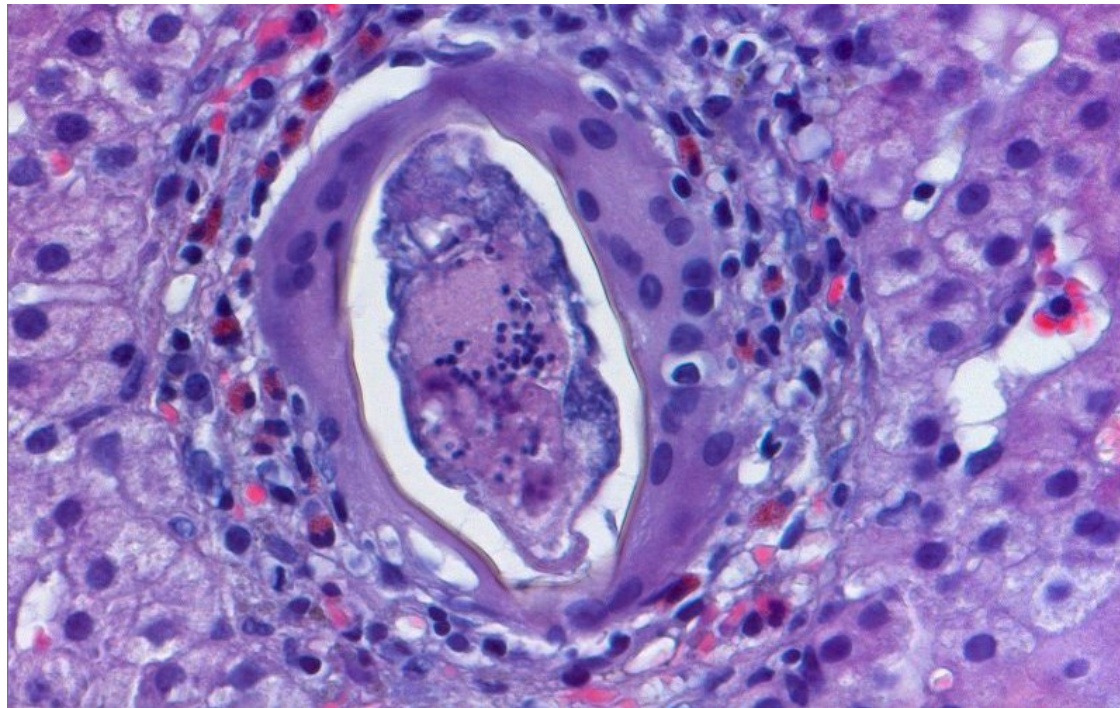
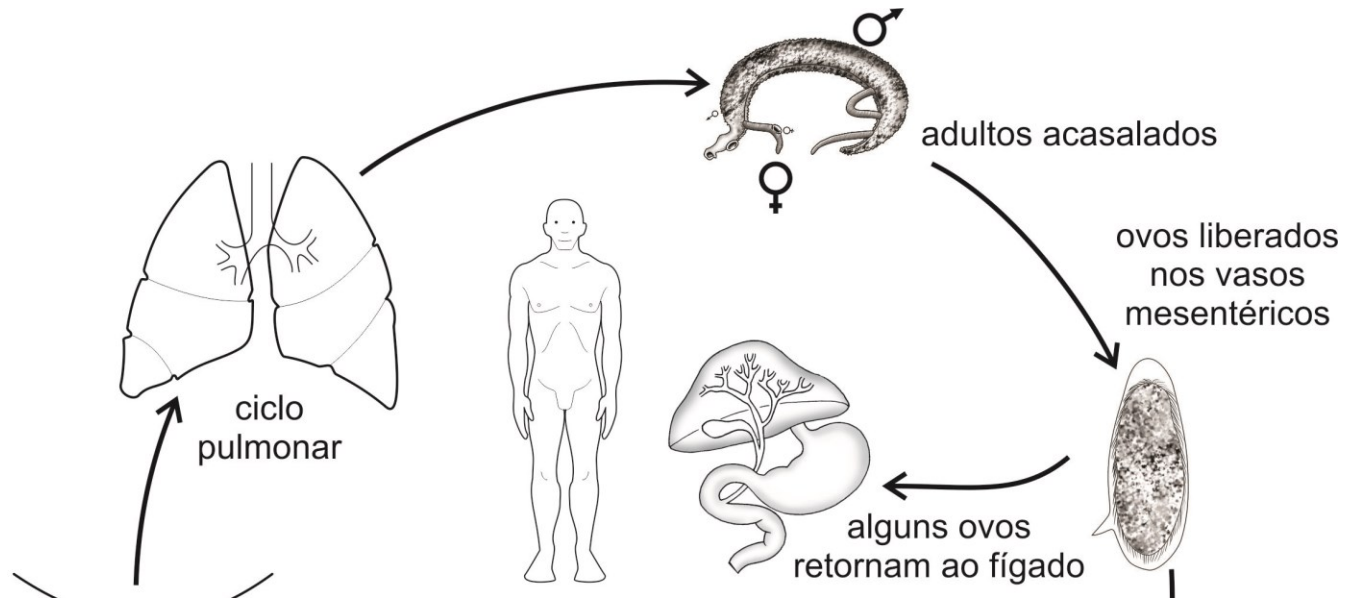
Schistosoma mansoni



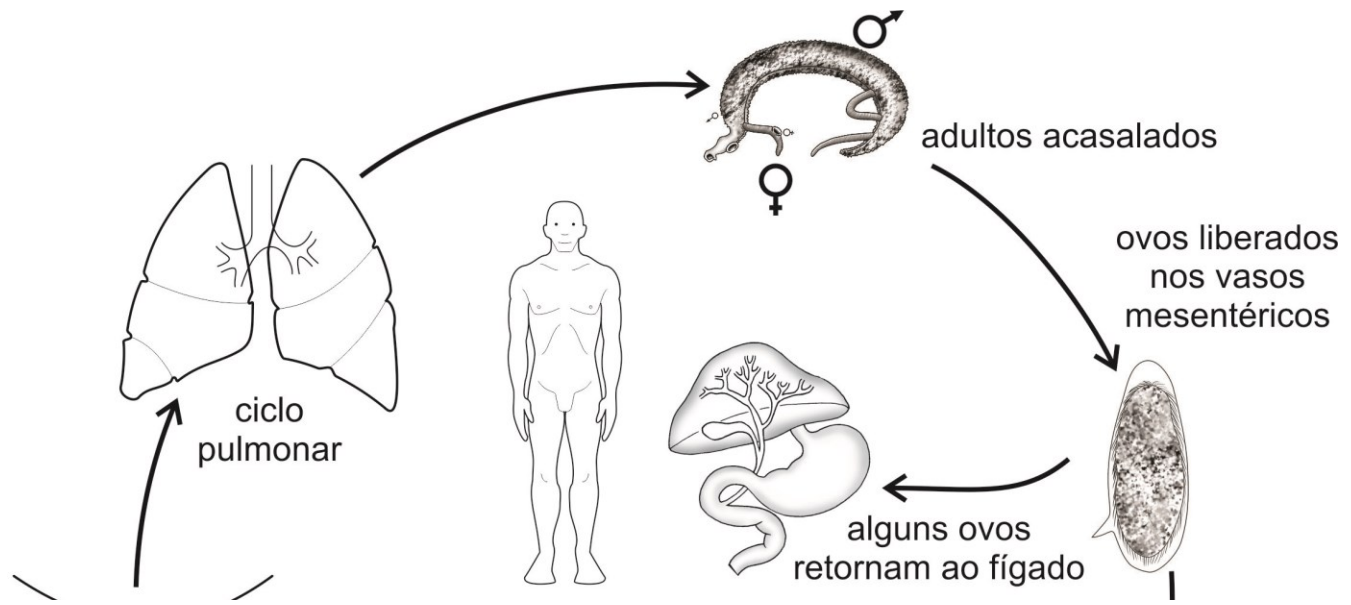
Schistosoma mansoni



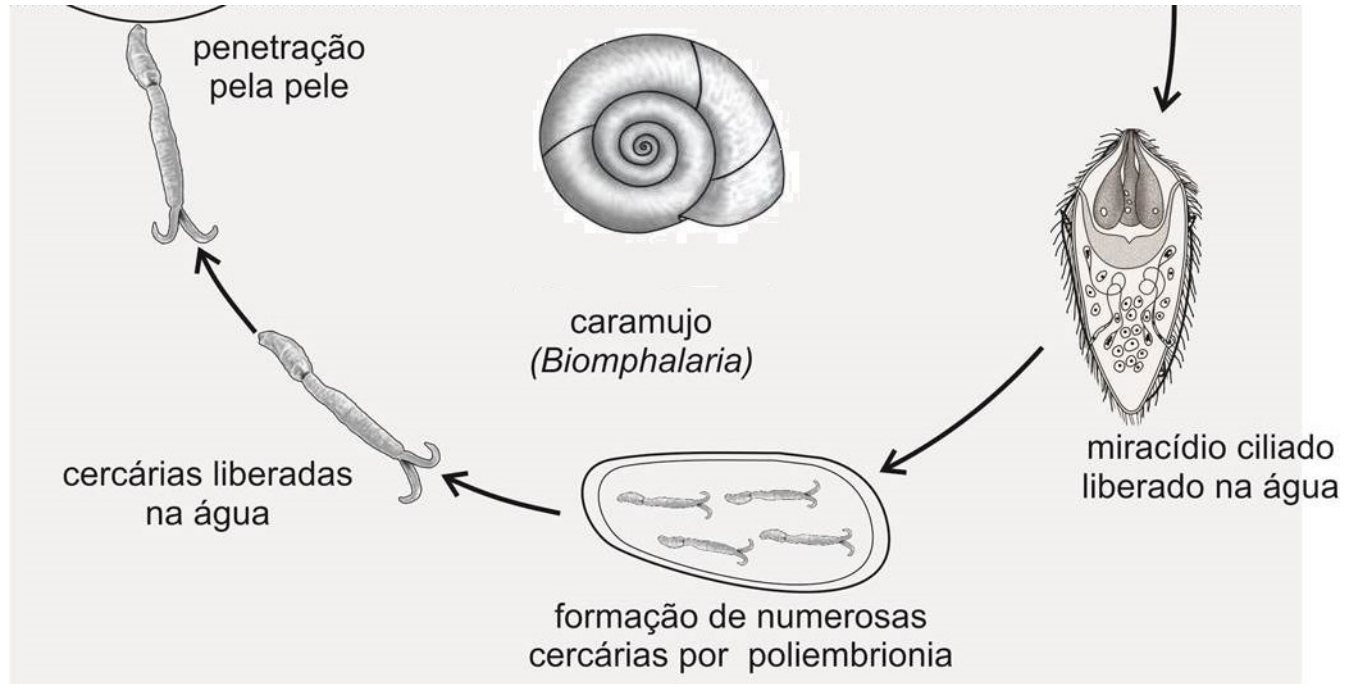
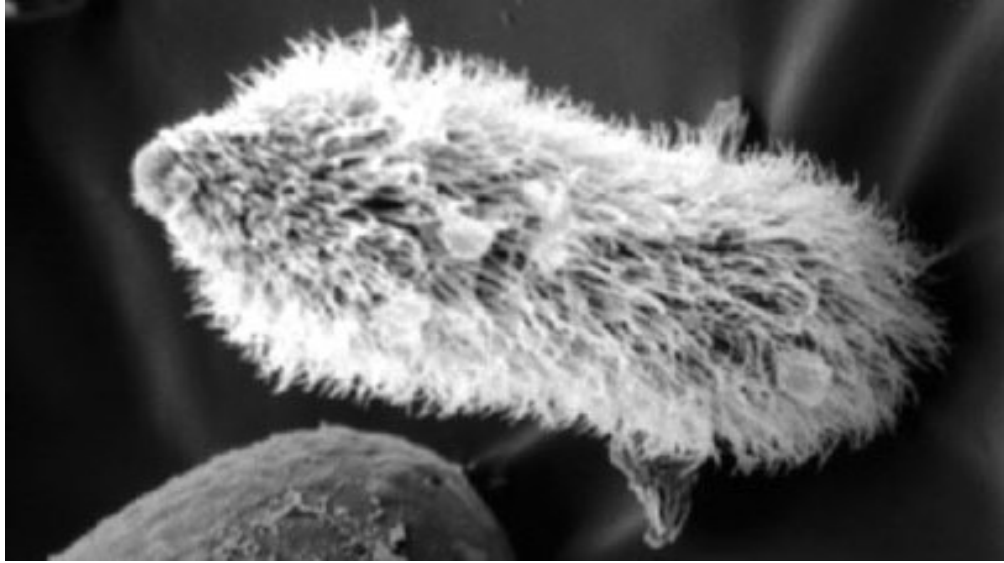
Schistosoma mansoni



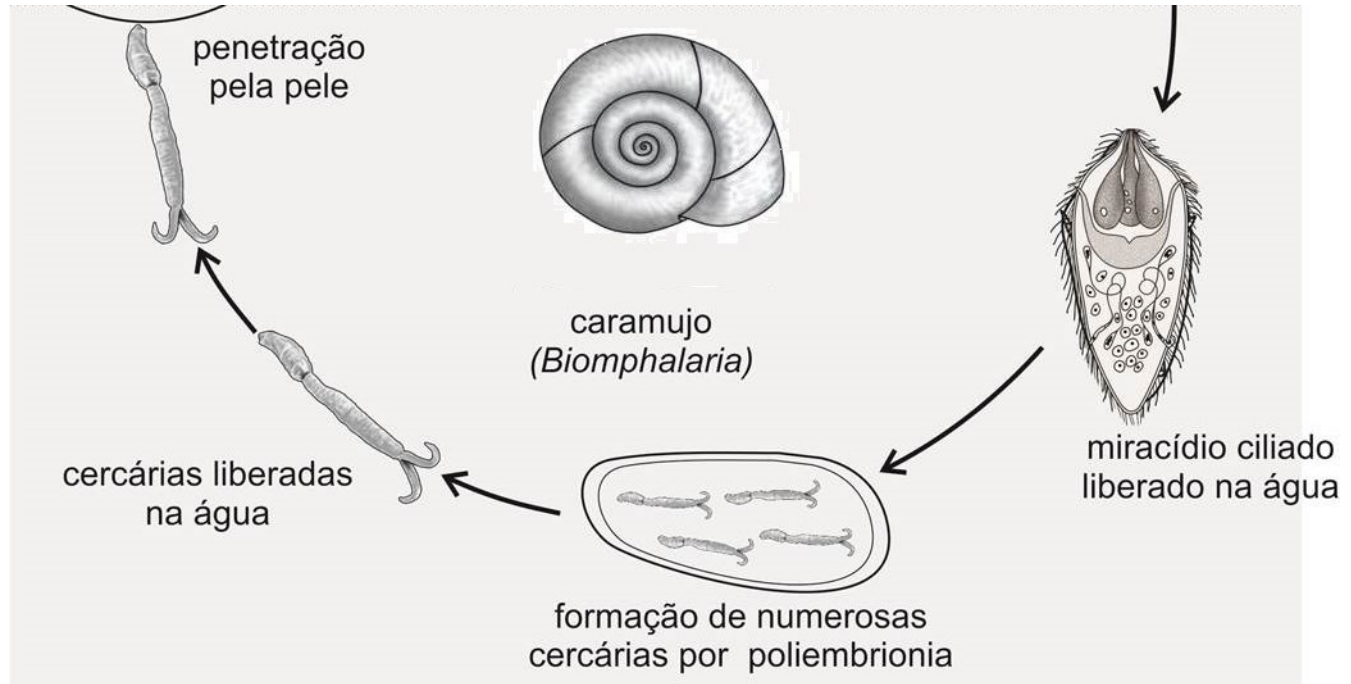
Schistosoma mansoni



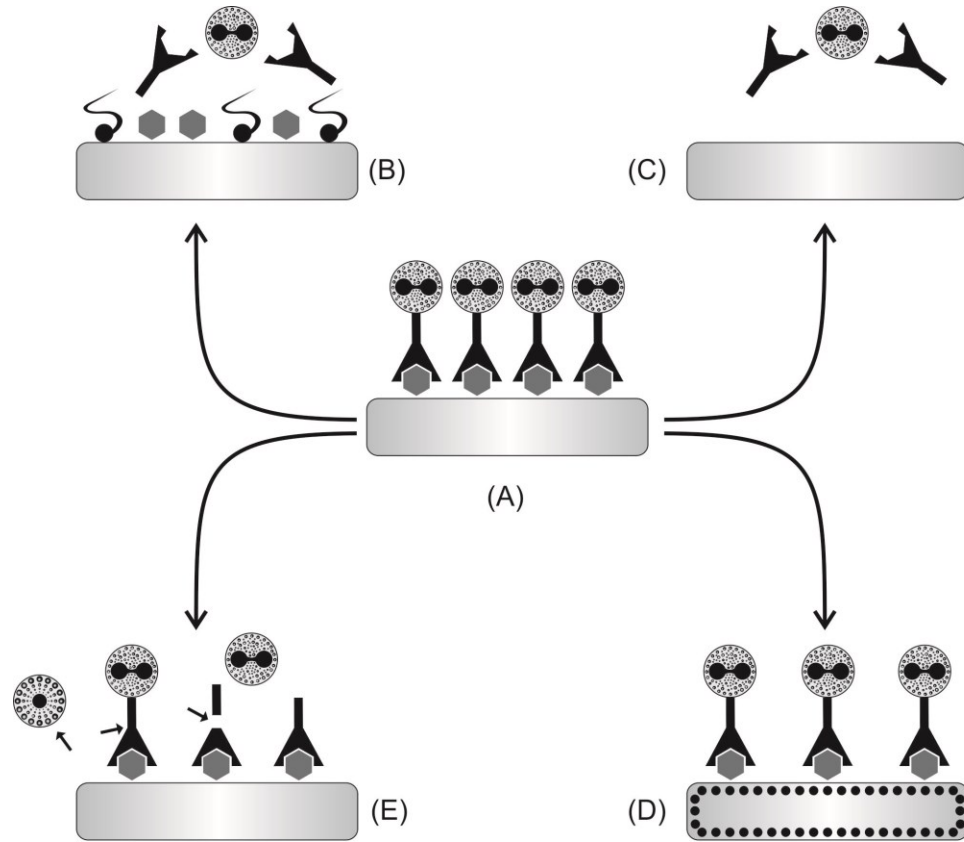
Schistosoma mansoni






Schistosoma mansoni



Imunidade concomitante



 Antígeno de superfície do parasita	 Mastócito			
<table border="0"> <tr> <td>— Normal</td> <td rowspan="2">} Tegumento do parasita</td> </tr> <tr> <td>... Refratário</td> </tr> </table>	— Normal	} Tegumento do parasita	... Refratário	 Eosinófilo
— Normal	} Tegumento do parasita			
... Refratário				
 Anticorpo	 Molécula derivada do hospedeiro			

Diagnóstico

Pesquisa de ovos nas fezes (métodos de concentração, Kato-Katz)

Teste de eclosão de miracídios

Biópsia retal

Intradermorreação

Pesquisa de anticorpos?

Pesquisa de antígenos circulantes



Diagnóstico: método de Kato-Katz

