

Supplementary Information: P52

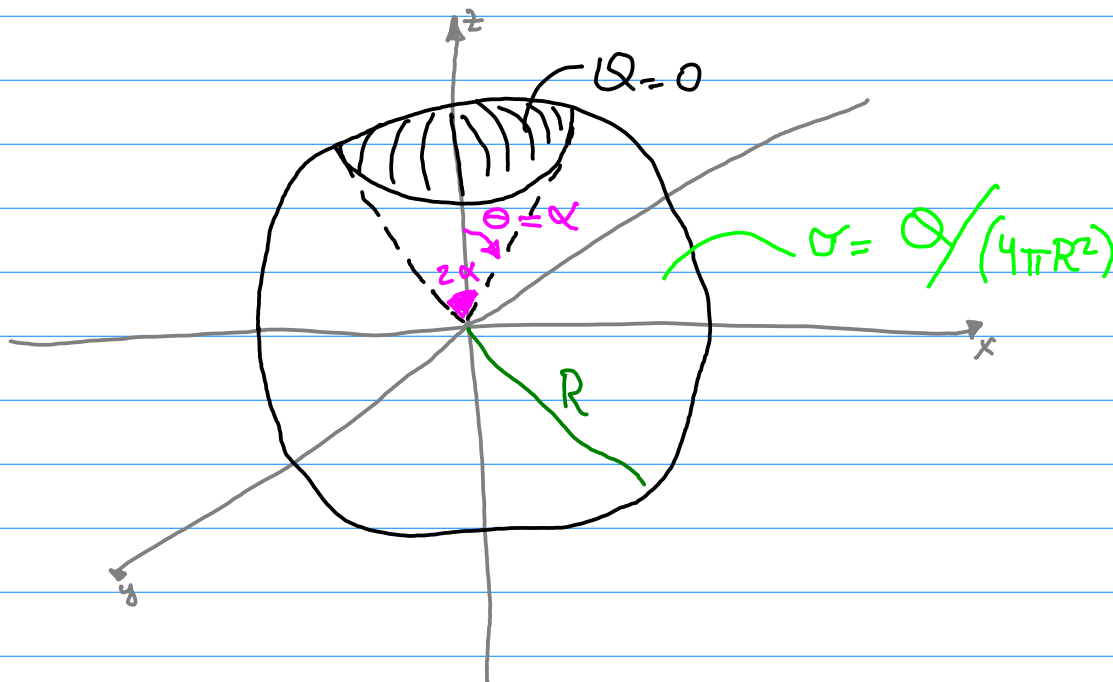
System of Units

In order to be consistent with the lectures, please, feel free to solve the P52 in International Units System (SI). The next P5s will be in this system too.

Question 2

Give your item (b) answer in terms of: a , b , q and L

Question 5



So, consider the cone with the polar angle as: $\theta = \alpha$, as described in the exercise!