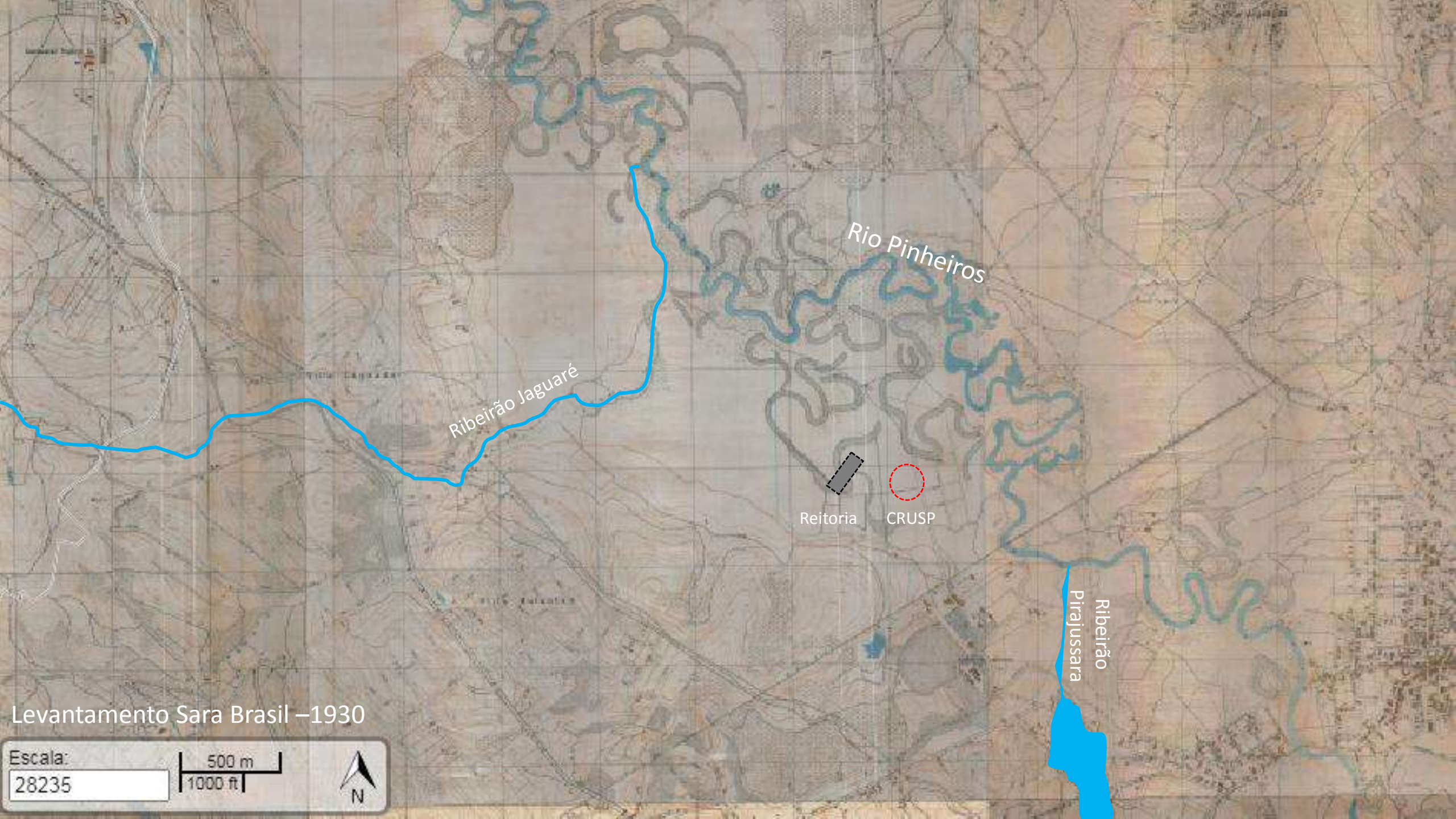


AUP 650 – ARQUITETURA DA PAISAGEM
2020/2021

Água – Referências de projeto



Ribeirão Jaguaré

Rio Pinheiros

Reitoria

CRUSP

Ribeirão
Pirajussara

Levantamento Sara Brasil - 1930

Escala: 28235

500 m
1000 ft

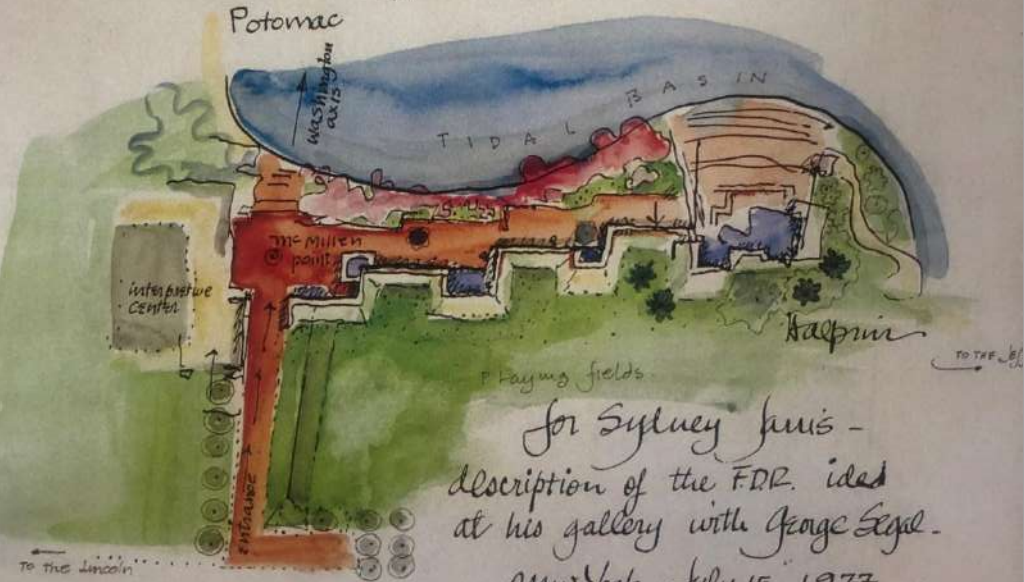
N



Levantamento Vasp-Cruzeiro - 1954

Escola:
10000

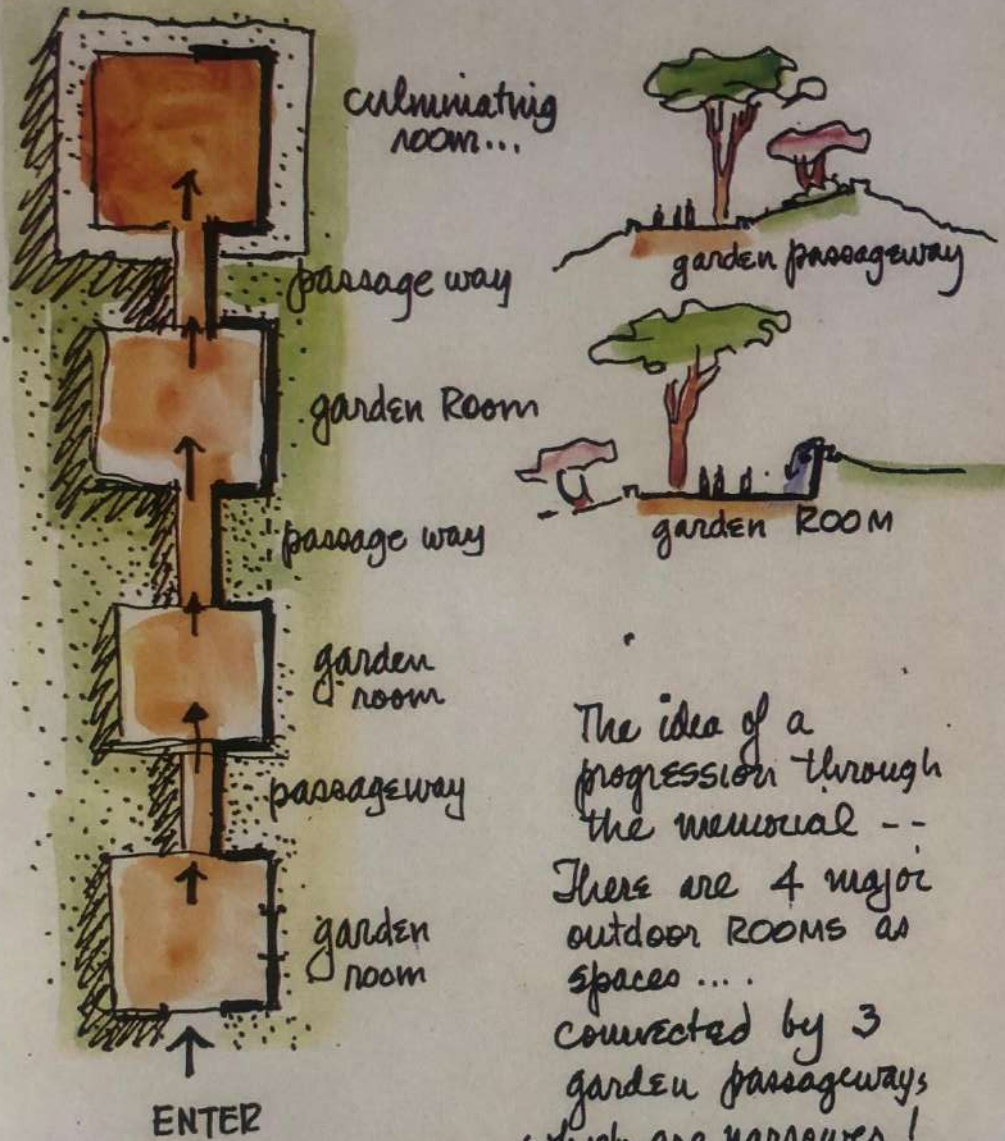
100 m
500 ft



for Sydney Juis -
description of the FDR. idea
at his gallery with George Segal -
New York - July 15, 1977

Halprin

Memorial Franklin Roosevelt
Washington
(Lawrence Halprin)



The idea of a progression through the memorial -- There are 4 major outdoor ROOMS as spaces ... connected by 3 garden passageways which are narrower!

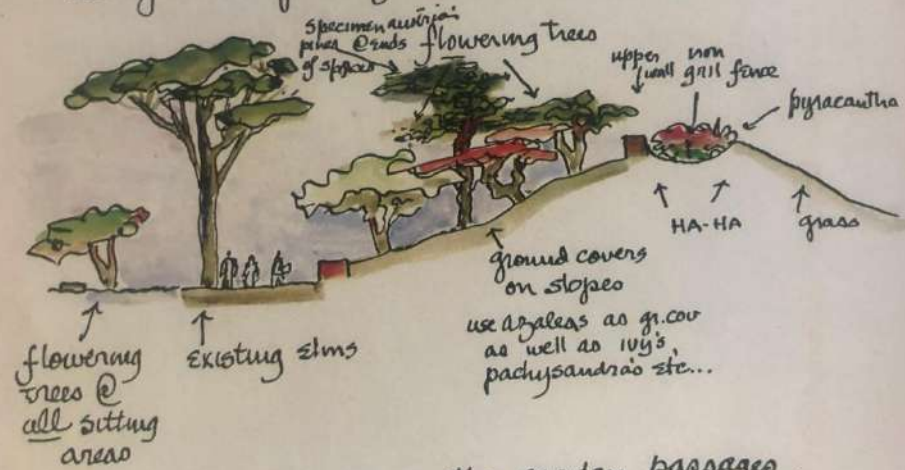
THE MEMORIAL AS A SERIES OF processional spaces



In one of the 4 "garden room" spaces - JDR Memorial on Washington's birthday

construction phase -- I suppose the playing fields area will have to be closed as a corporation yard !!

Within the memorial area flowering trees: -- many on slopes & along the lower wall in the garden passages: -----



Section in the garden passages.

the summer in Washington you really all paved

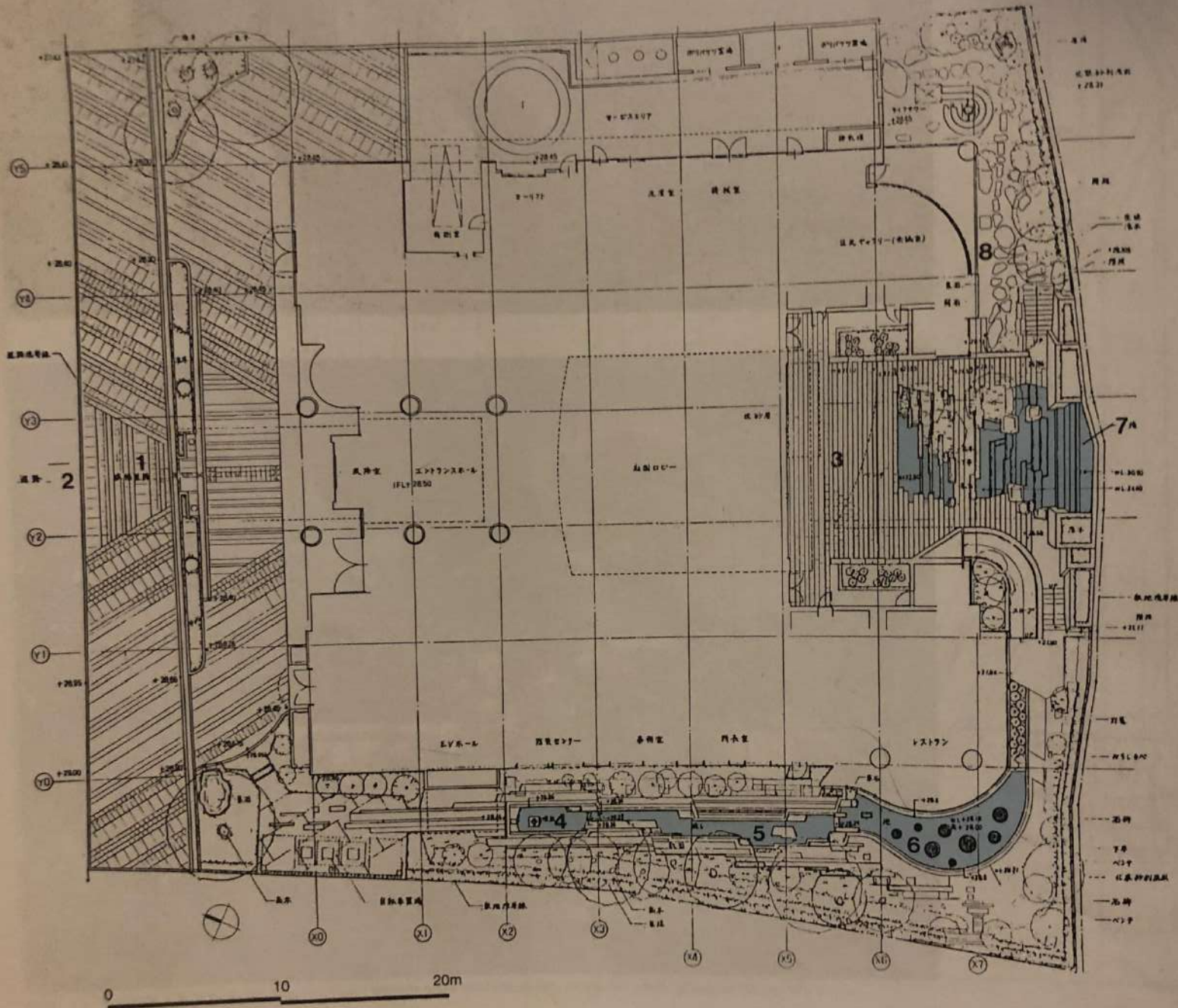
enclose the spaces & create rooms & passages. they carry the water in falls & rivulets & hold the incised quotations.

- Trees & plantings create the gardens which Roosevelt loved.



- The great views out to the 3 memorials to Lincoln, Jefferson & Washington & across the Tidal Basin link FDR to monumental Washington
- SCULPTURE in the memorial is to humanize personalize & make content visible... it articulates the events of FDR's times - so conceived





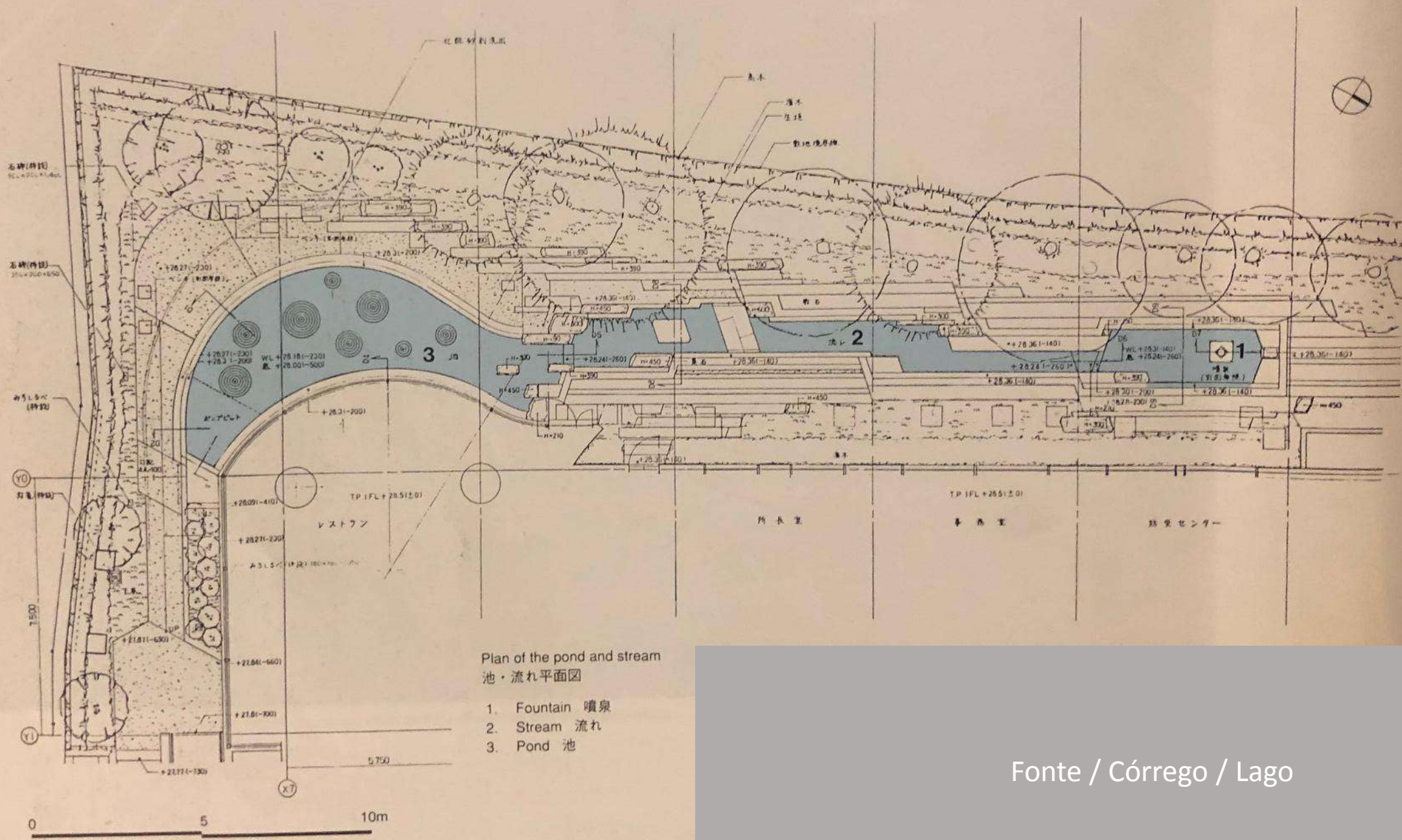
Plan

- 1. Entrance
- 2. Road
- 3. Steps
- 4. Fountain
- 5. Stream
- 6. Pond
- 7. Waterfall
- 8. Japanese garden

平面図

- 1. エントランス
- 2. 道路
- 3. 階段
- 4. 噴泉
- 5. 流れ
- 6. 池
- 7. 滝
- 8. 和風庭園

Praça Ichiban-cho
 Distrito de Chiyoda / Tokyo
 (Shodo Suzuki)



Plan of the pond and stream
池・流れ平面図

- 1. Fountain 噴泉
- 2. Stream 流れ
- 3. Pond 池

Fonte / Córrego / Lago



Vista geral lateral oeste



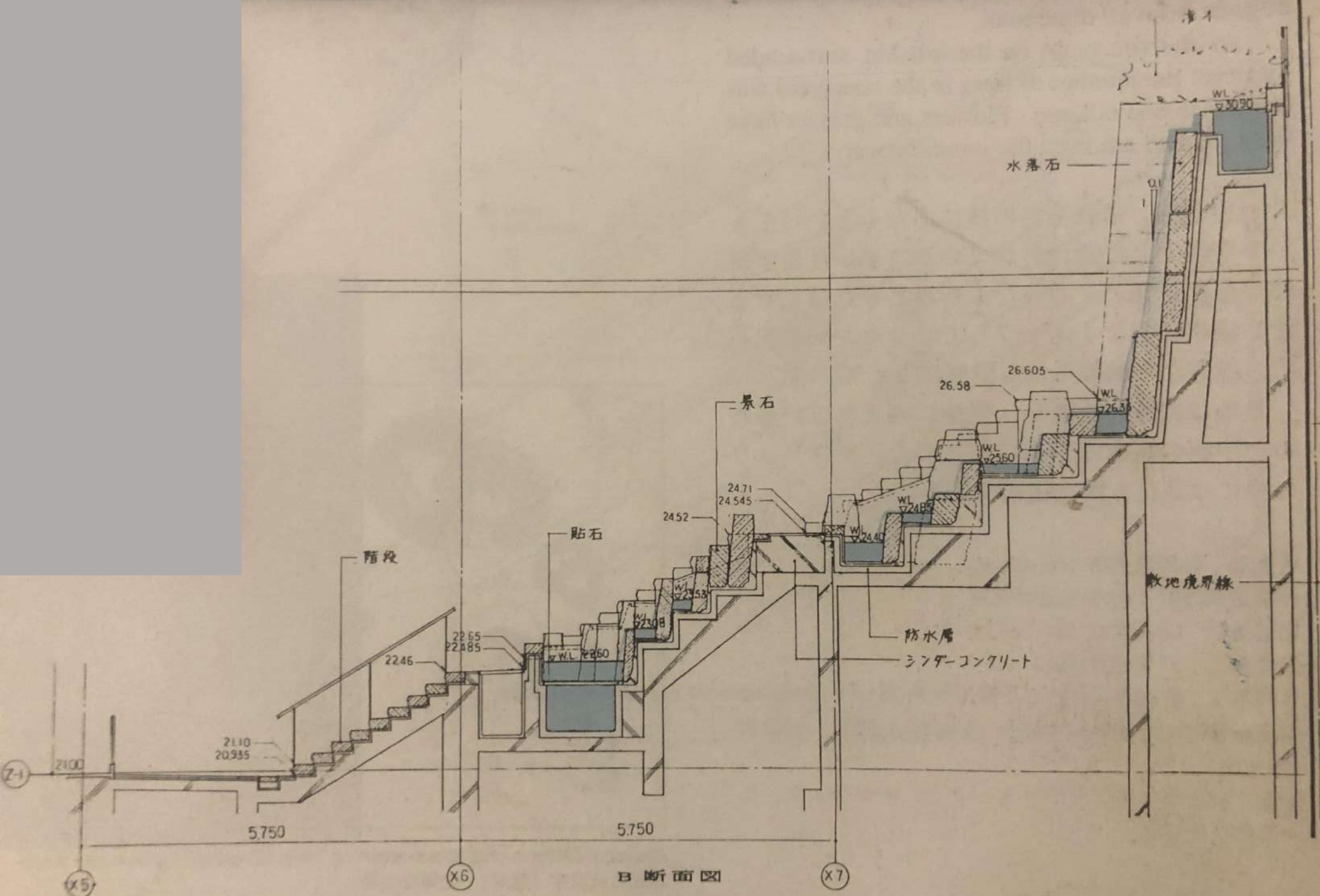


Ponte sobre o córrego





Cascata



B 断面図

Cascata
Seção transversal

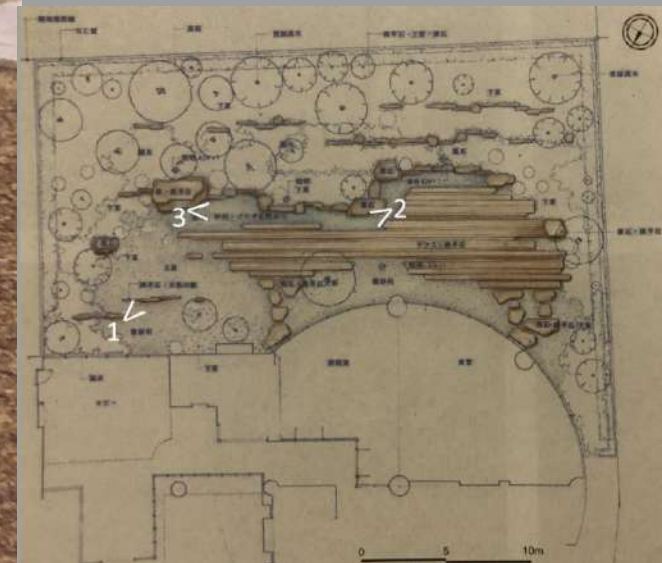


Foto 1

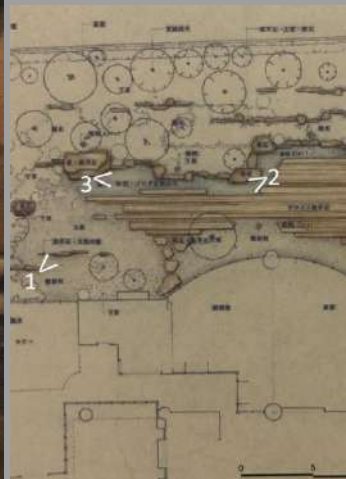


Foto 2

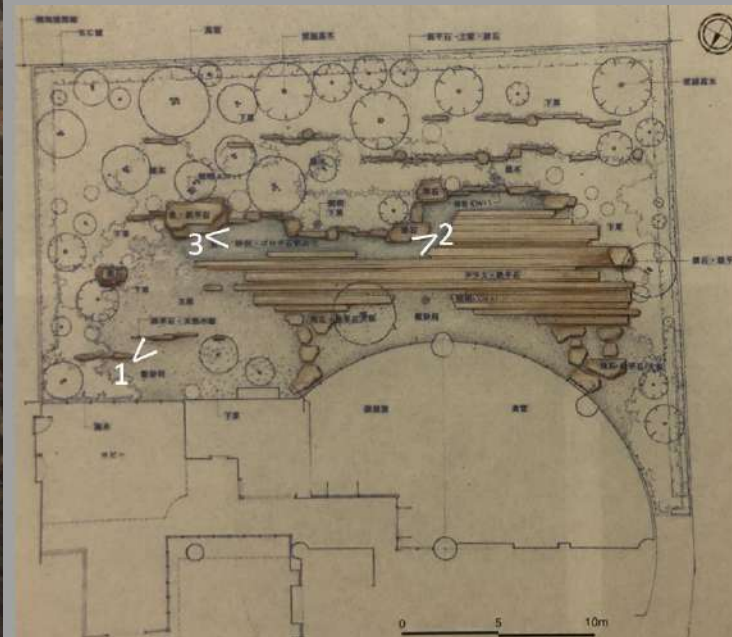
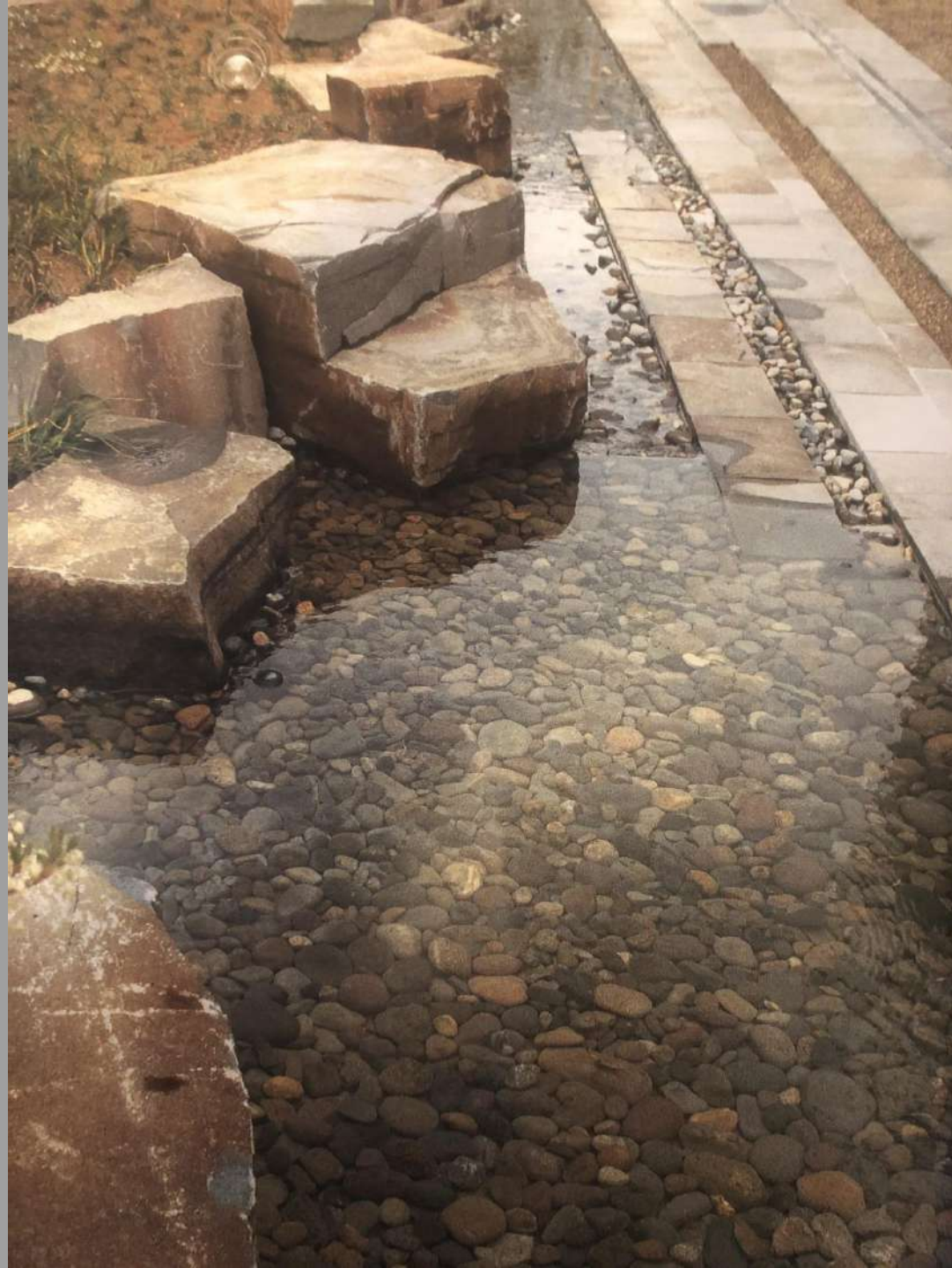
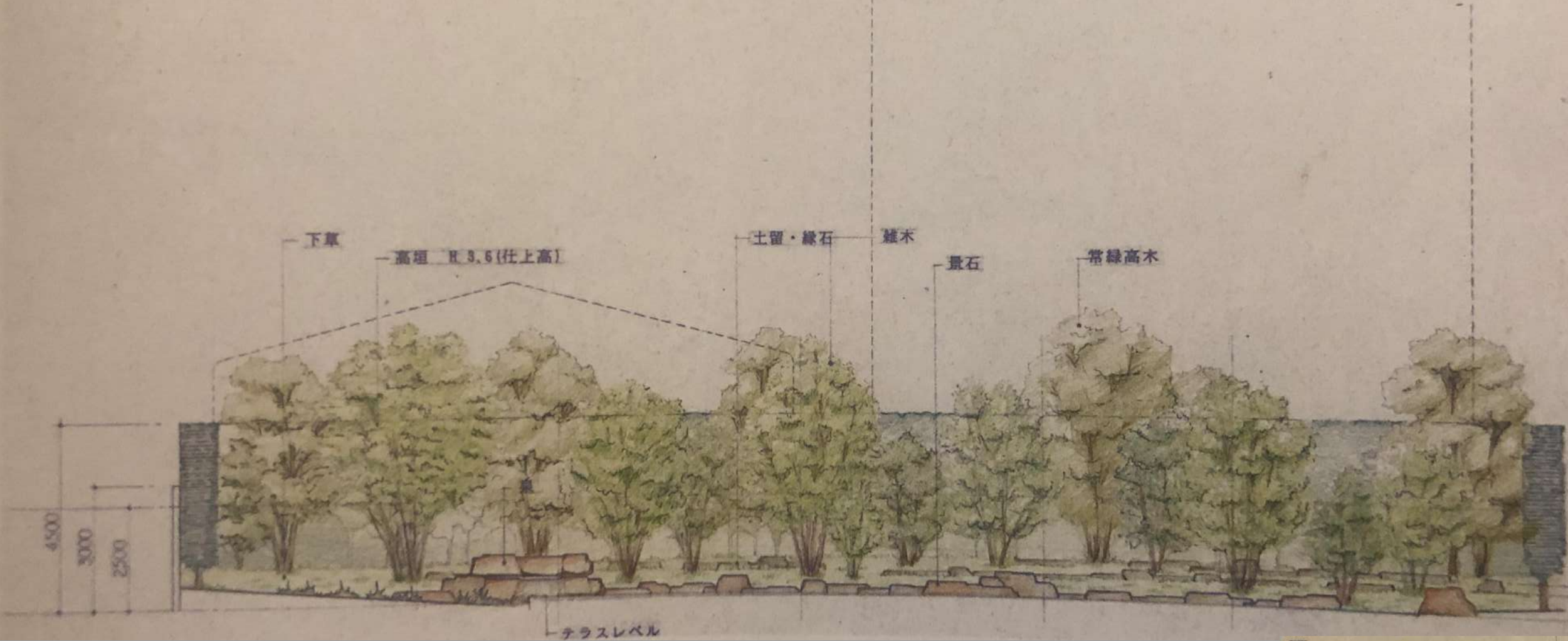
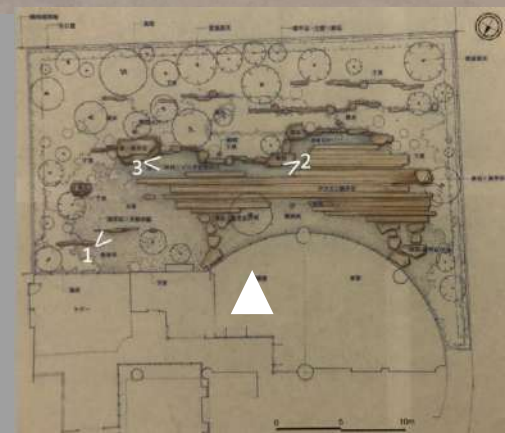


Foto 3

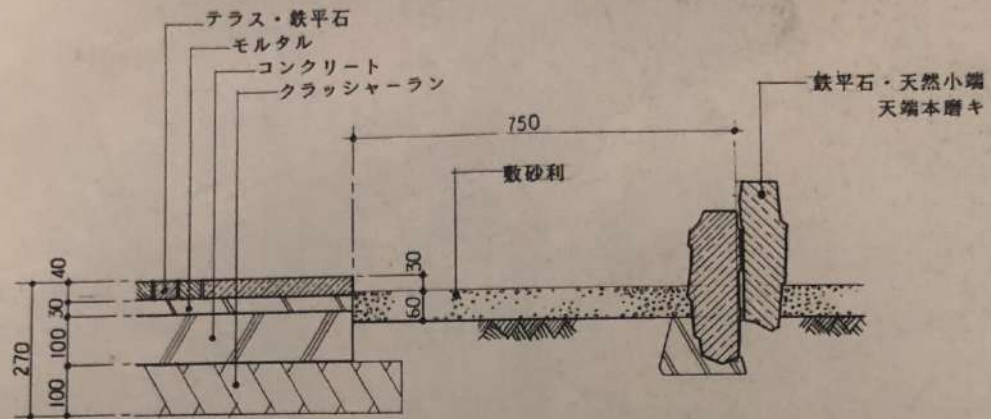


Elevação

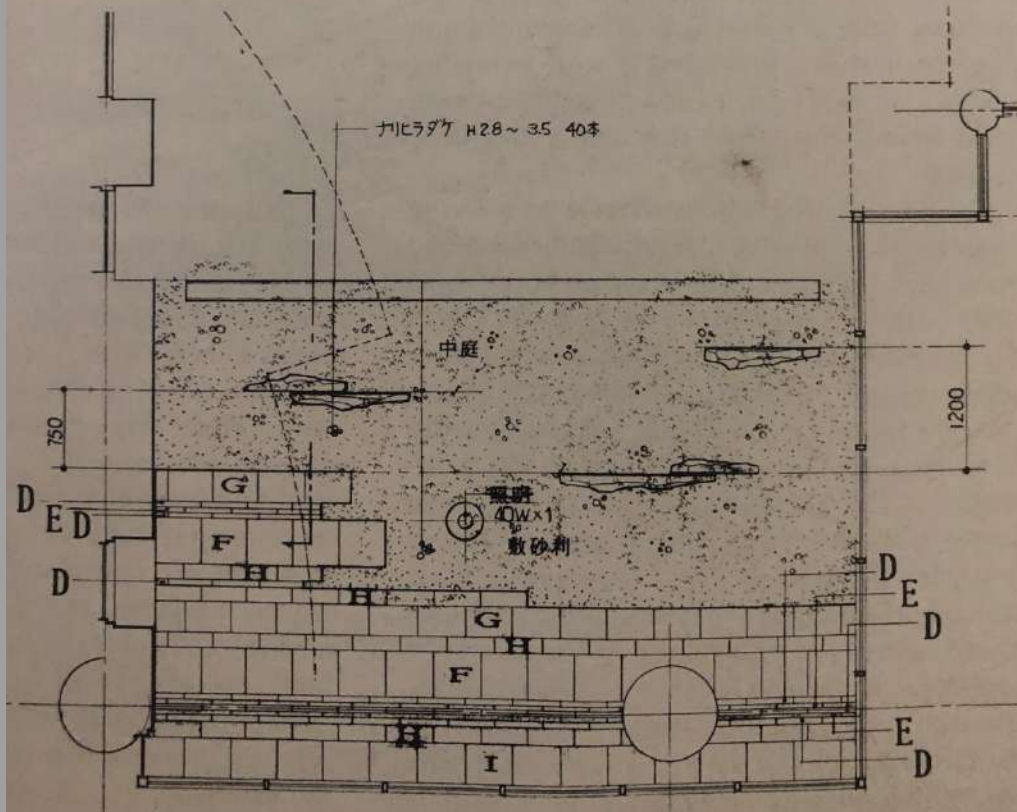




Pátio



Section detail 断面詳細図



Parque Tanner Springs
Portland
(Atelier Dreiseitl)



O Parque Tanner Springs (Portland) está 1,5 m abaixo do nível da rua, o que proporciona certo grau de silêncio e isolamento.

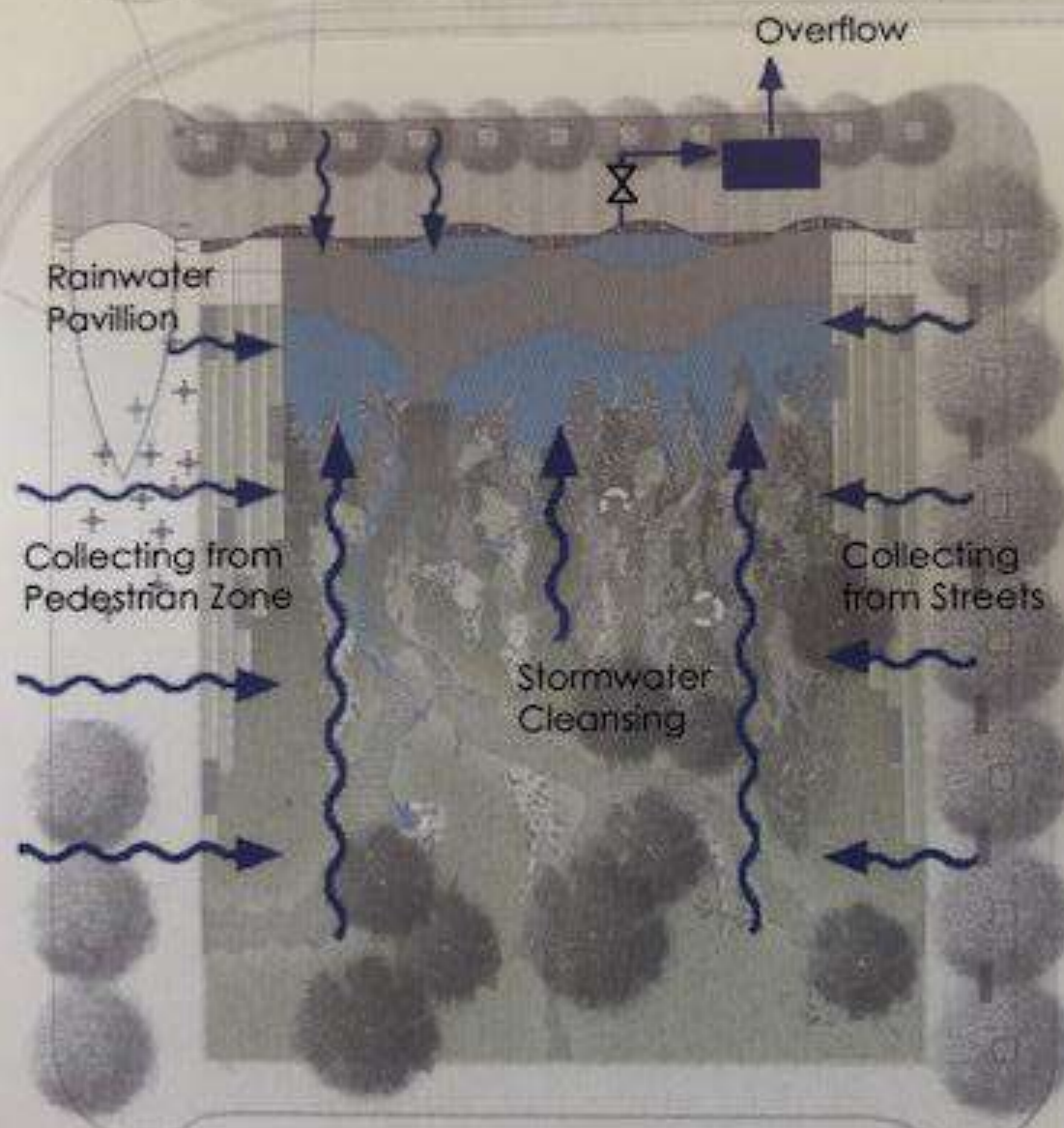
A área era um pântano quando a cidade foi construída. Os córregos que o alimentavam foram então tubulados para que o pântano fosse “recuperado” (conforme o vocabulário do século XIX), criando terreno firme para um curtume.

A água do parque provém da área circundante. Ela é limpa pelo bioma do brejo e depois lançada na Tanner Creek.

No “painel” foram usados 368 trilhos em desuso, provenientes de uma ferrovia local.

A comunidade foi envolvida no processo de design e agora assume a responsabilidade pela manutenção do parque.





Parque Tanner Springs
Portland
(Atelier Dreiseitl)













Maximum Height of steel rails 7.50 above Boardwalk

▼ Altura máxima dos trilhos: 7,50m acima do deck do passeio

Minimum Height of steel rails 3.66 above Boardwalk

▼ Altura mínima dos trilhos: 3,66m acima do deck do passeio

nível do deck (variável)

elev. of boardwalk varies

Ponte flutuante

For Pontoon see series 300

PONTOON 33.90

Max. Wl. 33.65

Max. Wl. 33.15

31.94

31.61

30.95

2%

2%

1 PAINEL DE TRILHOS - SEÇÃO TIPO

scale 1/2" = 1'

Fixação da manta de impermeabilização:
min. 18" acima do nível máx. da água

Manta de impermeabilização

Manta permeável

Parede de concreto

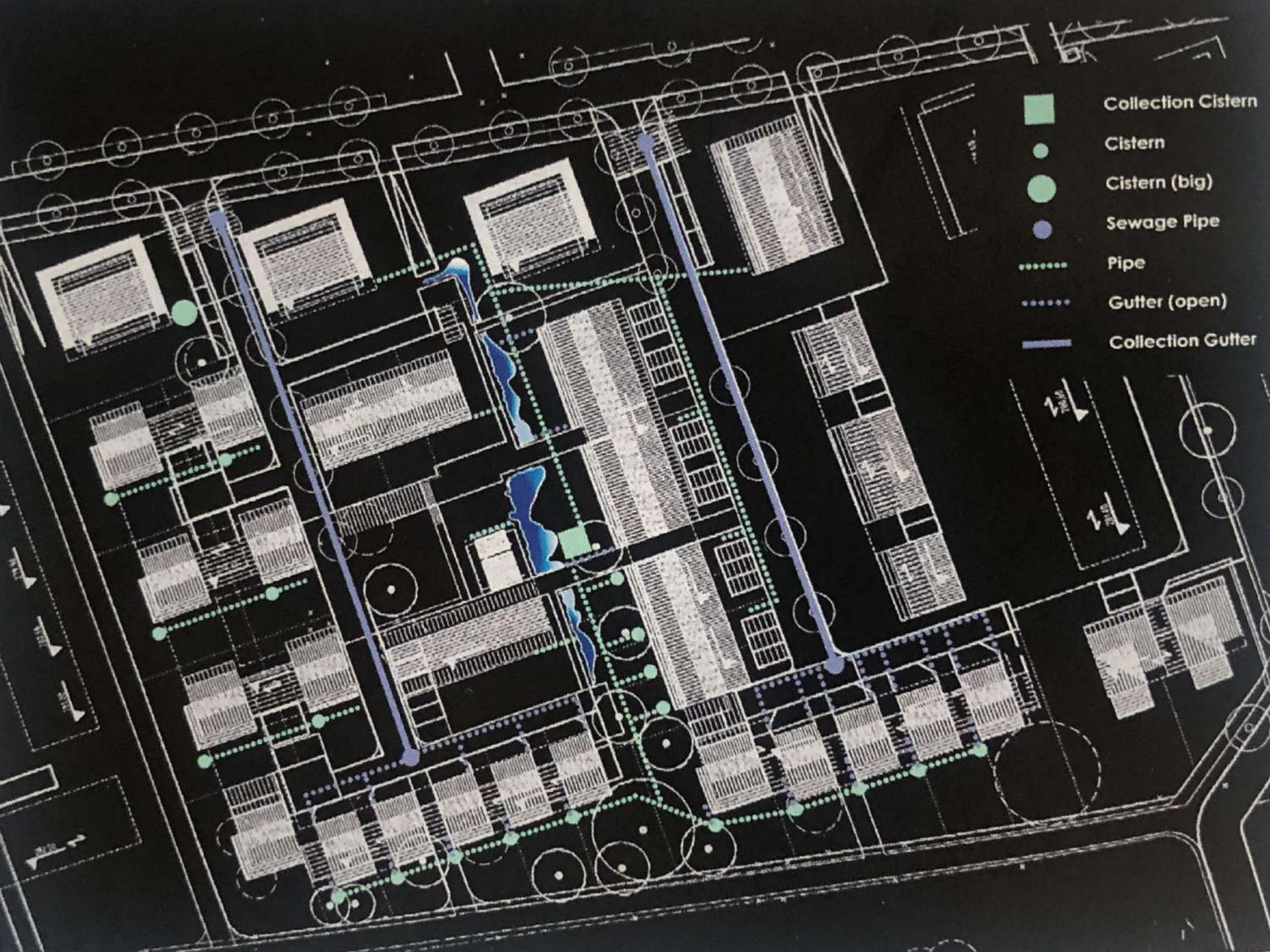
Cascalho arredondado

Tubo de drenagem

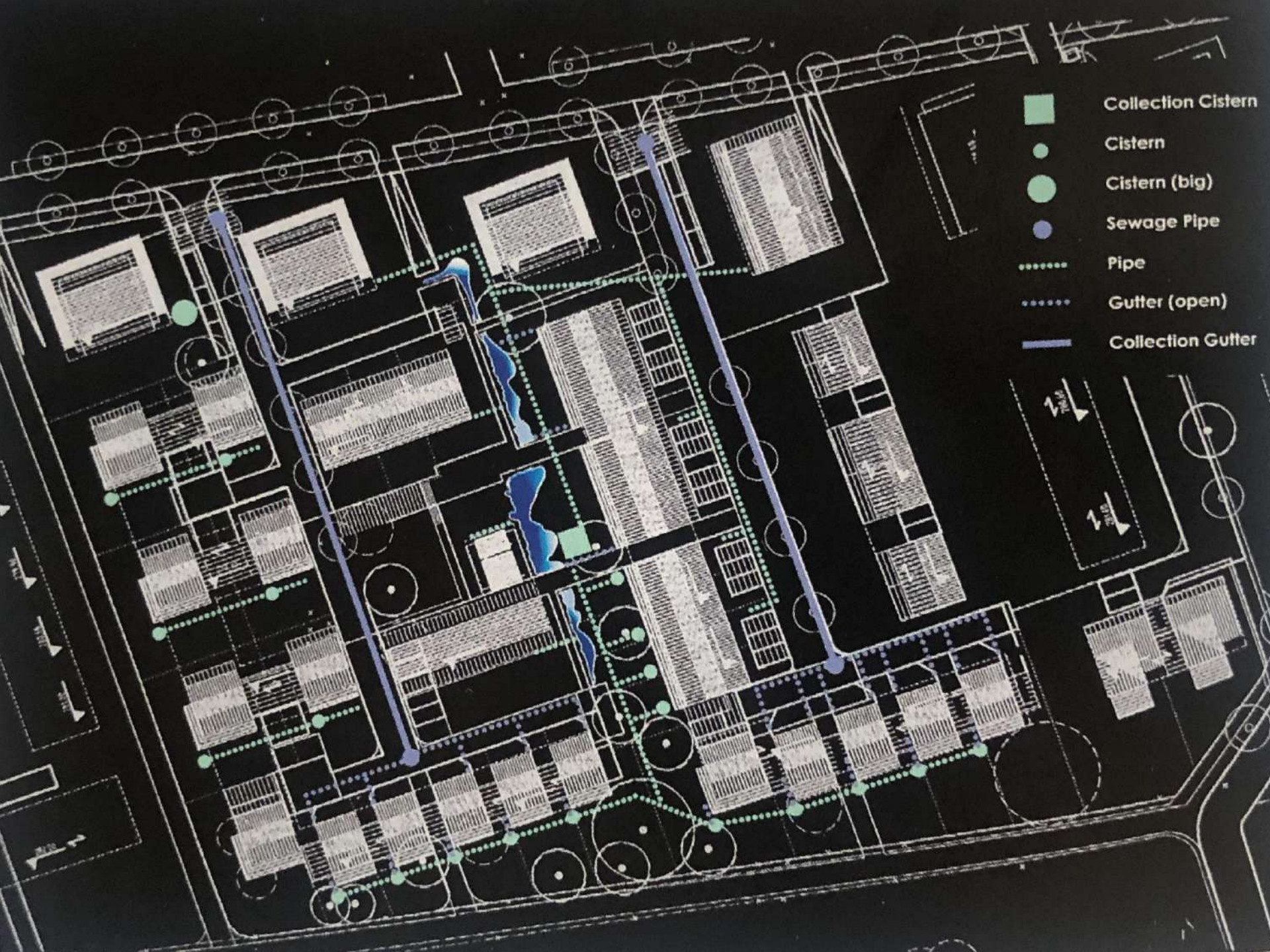
Concreto lançado após colocação dos trilhos

Base de concreto

Terra compactada



Conjunto Habitacional
Arkadien Asperg
Stuttgart
(Atelier Dreiseitl)

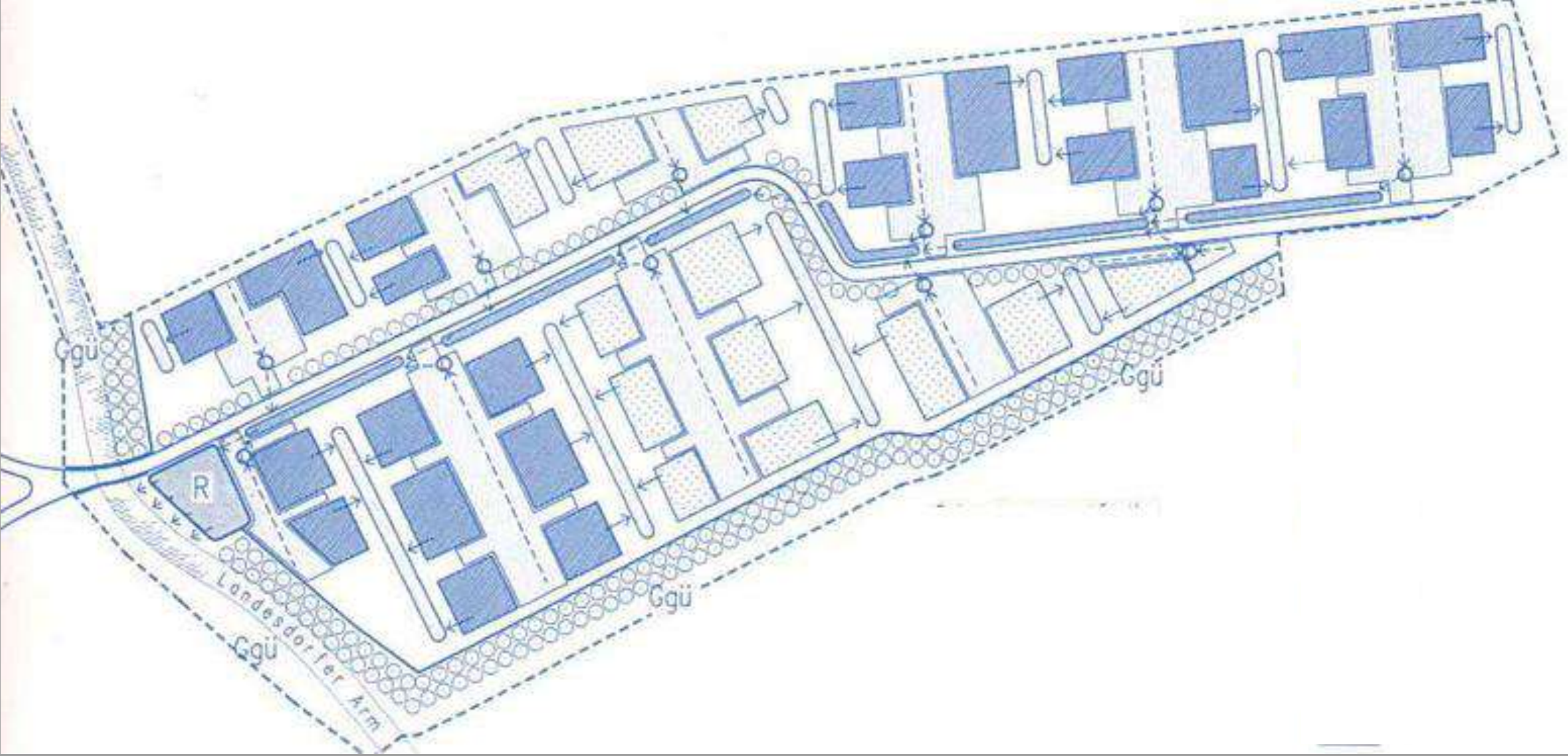


- Collection Cistern
- Cistern
- Cistern (big)
- Sewage Pipe
- Pipe
- - - - - Gutter (open)
- Collection Gutter

Cisterna coletora
Cisterna
Cisterna grande
Tubulação de esgoto
Tubo
Calha aberta
Calha coletora



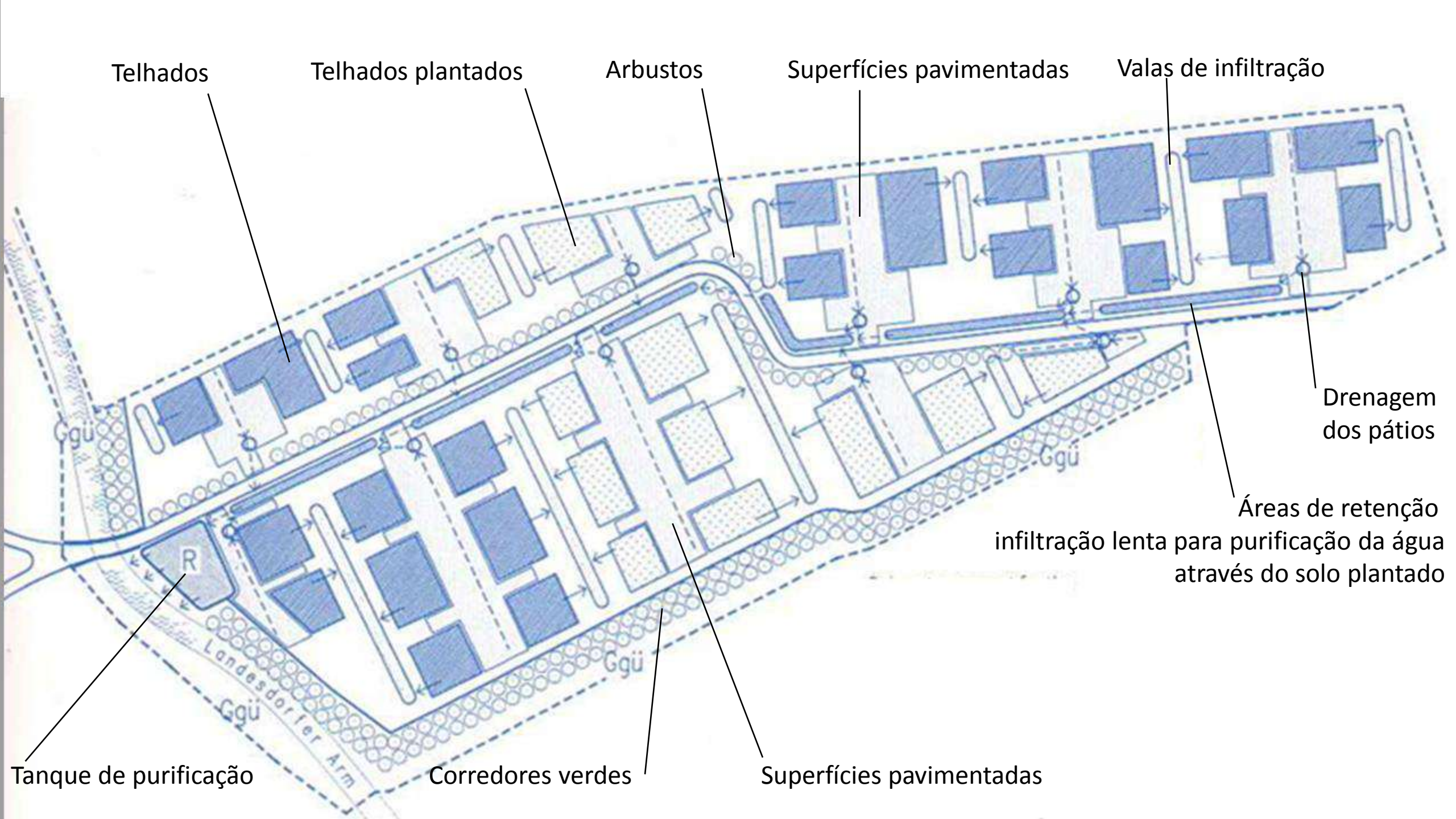




Gestão da água da chuva em Krams Park

Áustria

(Atelier Dreiseitl)





Sistema de valas junto às vagas de estacionamento



A água da chuva escoar para as valas pelas aberturas no meio-fio



A água infiltra pelas juntas do piso



Bacia de retenção com a água infiltrando após chuva forte



Vala gramada entre as vagas de estacionamento



Valas vegetadas com alto potencial de purificação

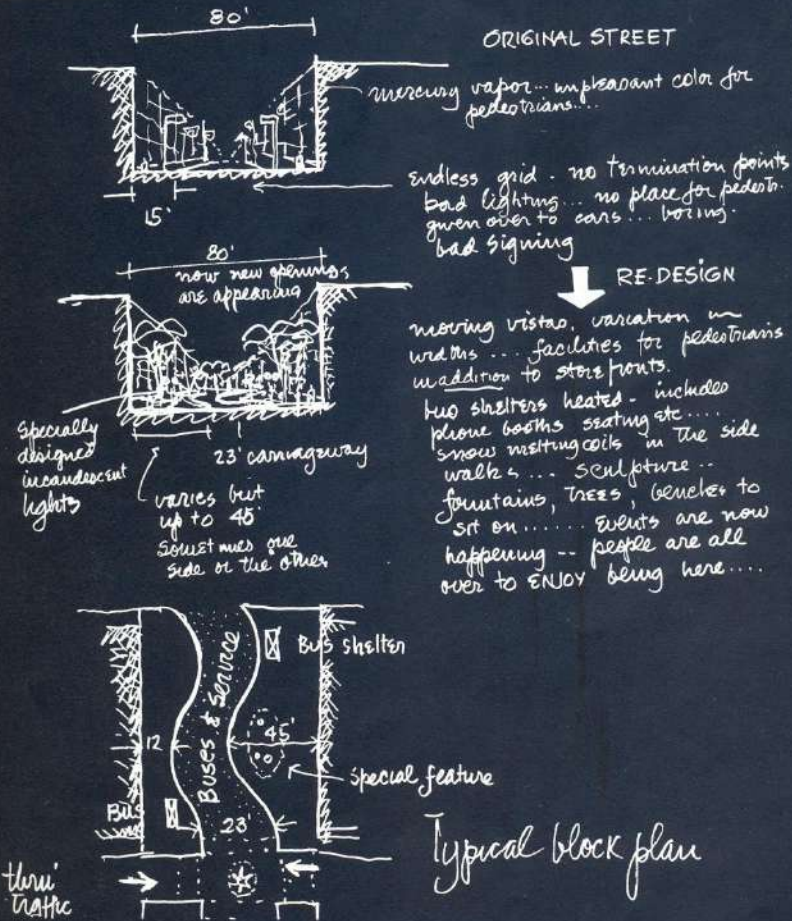
NICOLLET MALL

MINNEAPOLIS, MINNESOTA, 1967

ニコレット・モール

Dec 24...
NEW EDITION for CITIES

NICOLLET



Nicollet Mall
Minnesota
(Lawrence Halprin)



4. 平面図 Plan of Mall

