

Comprehensive gene and taxon coverage elucidates radiation patterns in moths and butterflies

Marko Mutanen^{1,*}, Niklas Wahlberg² and Lauri Kaila³

¹Zoological Museum, Department of Biology, University of Oulu, PO Box 3000, Oulu 90014, Finland

²Laboratory of Genetics, Department of Biology, University of Turku, Turku 20014, Finland

³Finnish Museum of Natural History, University of Helsinki, PO Box 17, Helsinki 00014, Finland

Lepidoptera (butterflies and moths) represent one of the most diverse animals groups. Yet, the phylogeny of advanced ditrysian Lepidoptera, accounting for about 99 per cent of lepidopteran species, has remained largely unresolved. We report a rigorous and comprehensive analysis of lepidopteran affinities. We performed phylogenetic analyses of 350 taxa representing nearly 90 per cent of lepidopteran families. We found Ditrysia to be a monophyletic taxon with the clade Tischerioidea + Palaephatoidea being the sister group of it. No support for the monophyly of the proposed major internested ditrysian clades, Apoditrysia, Obtectomera and Macrolepidoptera, was found as currently defined, but each of these is supported with some modification. The monophyly or near-monophyly of most previously identified lepidopteran superfamilies is reinforced, but several species-rich superfamilies were found to be para- or polyphyletic. Butterflies were found to be more closely related to ‘microlepidopteran’ groups of moths rather than the clade Macrolepidoptera, where they have traditionally been placed. There is support for the monophyly of Macrolepidoptera when butterflies and Calliduloidea are excluded. The data suggest that the generally short diverging nodes between major groupings in basal non-tineoid Ditrysia are owing to their rapid radiation, presumably in correlation with the radiation of flowering plants.

Keywords: Lepidoptera; molecular systematics; phylogeny; rapid radiation

1. INTRODUCTION

Lepidoptera (moths and butterflies) with over 160 000 described and 500 000 estimated species are among the most diverse animal groups (Kristensen *et al.* 2007). Together with Coleoptera, Hymenoptera and Diptera, they cover well beyond one half of all described organism species (Hunt *et al.* 2007; Sharkey 2007; Yeates *et al.* 2007). Their fascinating appearance renders them the most adored group of insects. They have been bred for sericultural purposes for at least 5000 years, and the detailed life histories of countless numbers of species have been investigated since then. Lepidoptera include many serious pest species and they have been popular organisms in various model systems (Roe *et al.* 2010). The phylogenetics of some major lepidopteran groups have been intensively studied on the basis of their morphology, and more recently also based on DNA data. While the interrelationships of the earliest lineages of Lepidoptera have been intensively studied for decades (Kristensen & Skalski 1998; Kristensen *et al.* 2007), the largest radiation of Lepidoptera, the Ditrysia has eluded analytical studies until recently (Regier *et al.* 2009). However, even this analysis was based on a limited set of taxa and taxon sampling heavily biased towards ‘advanced’ Lepidoptera.

Hence, the order itself lacks a rigorous evolutionary framework. In addition to a lack of phylogenetic analyses

with comprehensive taxon sampling, we can see two additional reasons for the existing situation. First, groups of ditrysian Lepidoptera are morphologically homogeneous, and their phylogenetic affinities are therefore especially difficult to unravel (Kristensen & Skalski 1998), and second, there has been a shortage of phylogenetically informative genetic markers suitable for routine phylogenomic analyses. Owing to recent pioneering work in designing appropriate nuclear genomic markers (Wahlberg & Wheat 2008), there is now a good set of suitable genetic markers for use in lepidopteran phylogenomics.

The aim of this research was to clarify broad patterns of lepidopteran affinities using a wide array of molecular markers and a comprehensive taxon sampling. We performed phylogenetic analyses of 350 taxa that represent 43 out of 45 recognized lepidopteran superfamilies and nearly 90 per cent of lepidopteran families. These taxa altogether represent over 99 per cent of described moth and butterfly species. The analyses are based on eight gene regions, of which seven are from the nuclear genome and one from the mitochondrial genome. Our results show several unexpected patterns as well as corroborate many previous groupings.

2. MATERIAL AND METHODS

(a) Material acquisition and taxon sampling

The taxon sampling was planned largely based on the tentative lepidopteran phylogeny of Minet (1991) and Kristensen *et al.* (2007). Basically, all taxa at the subfamily level for which suitable material was available were included,

* Author for correspondence (marko.mutanen@oulu.fi).

Electronic supplementary material is available at <http://dx.doi.org/10.1098/rsob.2010.0392> or via <http://rsob.royalsocietypublishing.org>.

supplemented with many taxa for which phylogenetic affinities have remained ambiguous, a total of 350 taxa (see the electronic supplementary material, table S1). The study covers all the lepidopteran superfamilies except Simaethistoidea and Whalleyanoidea, for which recent material is not known. Of the 124 lepidopteran families listed in Kristensen *et al.* (2007), 111 (89.5%) are included in this study (see the electronic supplementary material, table S1). They are divided into 252 named subfamilies, accounting for 75.2 per cent of the subfamilies listed in Kristensen *et al.* (2007). The classification and nomenclature follow Kristensen *et al.* (2007), except in Lypusidae and Cimelioidea, where subsequent classifications were followed (Yen & Minet 2007; Heikkilä & Kaila 2010). The bulk of the DNA material was gathered from the DNA collections of the authors. Notable additions were received from the ATOLep DNA collection at the University of Maryland (<http://www.leptree.net>), the Australian National Collection (ANIC) at the Commonwealth Scientific and Industrial Research Organization, and several private collections.

(b) *Molecular techniques*

Usually, legs preserved in 100 per cent alcohol were used for DNA extraction, but sometimes also other body parts or larvae were used. In several cases, air-dried specimens up to 10 years old yielded DNA of good quality, indicating that also nuclear DNA of unrelaxed material kept in dry and cool conditions can successfully be amplified using standard extraction and sequencing protocols even after a relatively long time of preservation (Wahlberg & Wheat 2008). Notably, material of the ANIC and some private collections were found to be very useful, emphasizing the importance of proper preservation conditions in museum collections, and at the same time warning against water relaxation of specimens, as such an operation almost certainly fragments the nuclear DNA. Remaining parts of specimens were stored to serve as vouchers. Total genomic DNA was extracted and purified using Qiagen's DNeasy extraction kit. DNA amplification and sequencing were carried out following protocol explained in detail elsewhere (Wahlberg & Wheat 2008). Sequencing was performed mainly with an ABI 3730 capillary sequencer (Oulu), and a smaller part with an ABI PRISM 3130×1 capillary sequencer (Turku). One mitochondrial (*COI*) and seven protein-coding nuclear gene regions (*EF-1α*, *Wingless*, *RpS5*, *MDH*, *GAPDH*, *CAD* and *IDH*) were sequenced, accounting for a total of 6303 bp with gaps. For details on the sequencing success and GenBank accession numbers of each species and gene, see the electronic supplementary material, table S2.

(c) *Phylogenetic analyses*

The sequence alignments were carried out manually using BioEdit 7.0.4.1. (Hall 1999). Overall, alignment of the gene regions was straightforward, however, there are short regions in *Wingless* and *RpS5* in which unambiguous alignment was not possible across all sequences. Consequently, we excluded these regions from the data, leaving 6157 bp for analysis. To minimize the risk of any kind of confusion during the sequencing protocol and errors in alignments, we constructed neighbour-joining and maximum likelihood trees separately for each gene and checked them carefully for identical sequences and other doubtful patterns. Furthermore, to minimize the risk of wrong identification, all the specimens were cross-checked with their DNA barcodes in

BOLD (Barcode of Life Data Systems, <http://www.barcodinglife.org/views/login.php>) (Ratnasingham & Hebert 2007), where reference specimens were available for many of the species used in this study (see the electronic supplementary material, table S1).

In a few cases where material of excellent quality was not available, sequence data were constructed by combining sequences from two individuals. This was done only if sequences successful in both individuals showed perfect or very close identity, suggesting no doubt about their conspecificity.

Since we were particularly interested in basal splitting events of ditrysian Lepidoptera, we evaluated the information value of third positions of codons in each gene separately. Changes in third positions represent mostly synonymous substitutions, and are hence unlikely to provide useful information at the deeper level of lepidopteran phylogeny, but may instead considerably increase the amount of uninformative 'noise' (homoplasy). After examining gene trees and a number of trials with various gene and taxon sets, we excluded third positions from the data in all genes except *EF-1α*, which evolves more slowly than any of the other genes (Wahlberg & Wheat 2008) and which, based on our evaluation, showed better resolution with third positions than without them. The trials with third positions included showed overall lower support values, and a few deviating groupings were regularly poorly supported and considered unlikely to be true. The effect of third positions was however not crucial as differences between the trials were not remarkable. With third positions excluded from all genes, except *EF-1α*, the data consisted of 4451 bp.

The phylogenetic analyses were carried out with both the model-based (maximum likelihood and Bayesian inference) and parsimony methods. We rooted our trees with Micropterigidae, arguably the sister group to other Lepidoptera (Kristensen & Skalski 1998; Wiegmann *et al.* 2002; Kristensen *et al.* 2007). The maximum likelihood analyses were carried out under the GTR + G model, chosen by MODELTEST v. 3.7, and the data were partitioned into eight gene regions. The maximum likelihood analysis was implemented using the online version of RAXML (<http://phylobench.vital-it.ch/raxml-bb/index.php>) (Stamatakis *et al.* 2008). Supports for nodes were evaluated with 1000 bootstrap replicates of the data. We considered groups supported by over 50 per cent and strongly supported by over 90 per cent bootstrap support values.

The Bayesian analyses were carried out on a subset of the data using BEAST v. 1.4.8. (Drummond & Rambaut 2007). This analysis specifically aimed at clarifying basal branching events in Ditrysia and was performed with a subset of 118 species, because independent runs of the full set of taxa failed to converge in 20 million generations. The data were partitioned into the mitochondrial gene region (*COI*), the full *EF-1α* gene region and the combined nuclear genes with third codon positions removed (*CAD*, *GAPDH*, *IDH*, *MDH*, *RpS5* and *Wingless*). The tree prior was set to the birth–death process, the independent models for the three partitions were all set to the GTR + G model, while all other priors were left to defaults. The branch lengths were allowed to vary under a relaxed clock model with an uncorrelated lognormal distribution. The analyses were run three times independently for 20 million generations, with every 1000th generation sampled. Using TRACER software

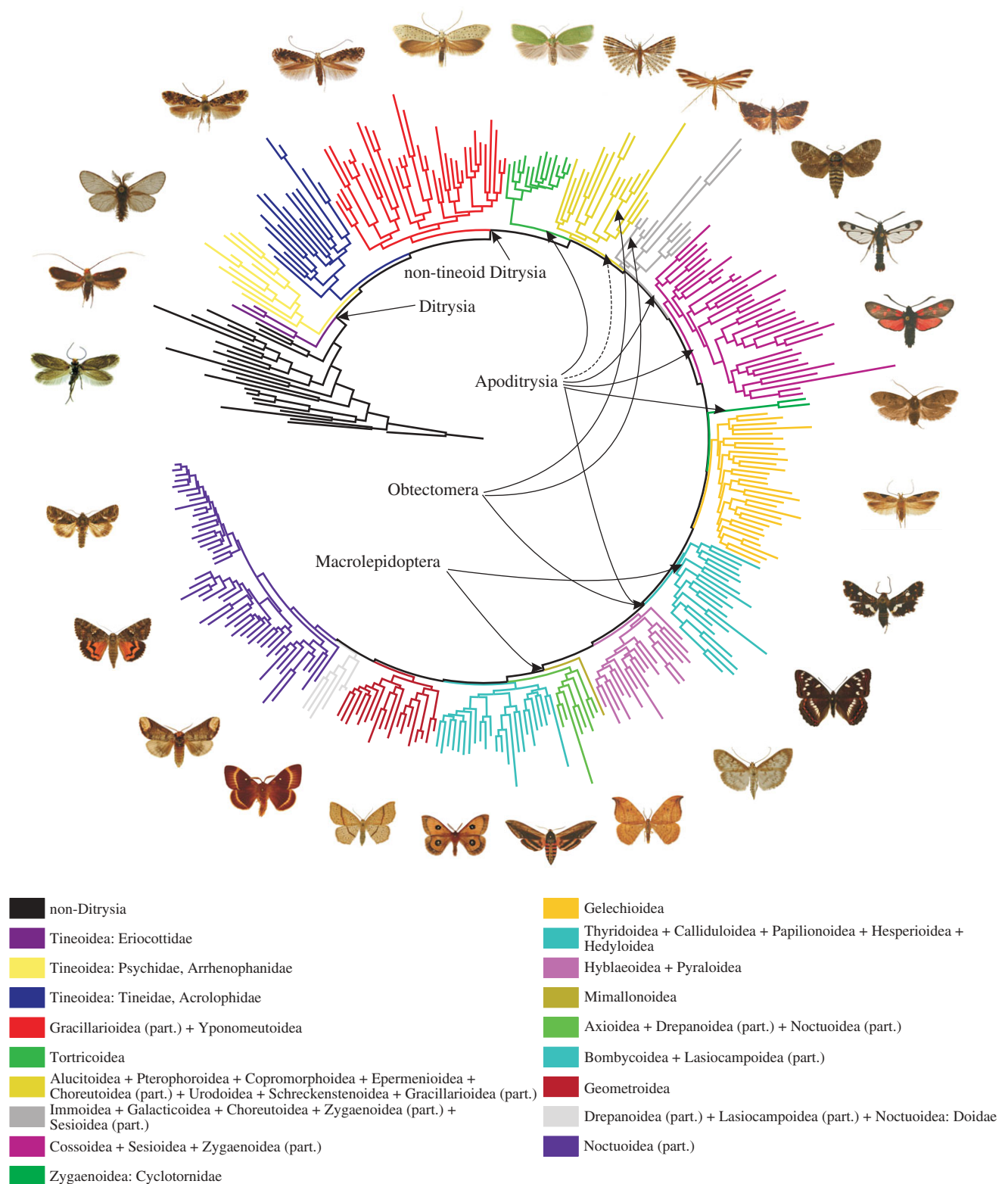


Figure 1. Overview of the 350-taxon RAXML maximum likelihood analysis. The tree was rooted on *Micropteryx*, a taxon likely to be a sister group to all other Lepidoptera. Non-ditryisian clades are all shown in black. Major ditryisian branches are coloured and their content indicated at the superfamily level. Putative ditryisian clades are shown by arrows in the middle of the circle. A solid line indicates complete inclusion and a dashed line partial inclusion in the named clade.

(part of the BEAST package), we confirmed that the three runs had converged to a stationary distribution after the burn-in stage, which left a total of 36 000 samples describing the posterior distribution. Note that the age of the root was arbitrarily set to 100. Since Bayesian posterior probability values have a tendency toward ‘overcredibility’ (Suzuki

et al. 2002; Kolaczowski & Thornton 2009), we interpreted the Bayesian posterior probabilities conservatively and considered groups supported only if over 0.9, or preferably full 1.0, posterior probability was achieved. However, we did not consider posterior probability estimates entirely uninformative because groups strongly supported in posterior

probabilities were usually found in maximum likelihood analysis as well.

The parsimony analysis was carried out using TNT (Goloboff *et al.* 2008). We used the ‘modern technology search’, including sectorial search, ratchet, drift and tree fusing; data compressed; gap = 5th state; ‘set initial level’—more than 60, random seed 100. The search was interrupted at 169 h 8 min (2 392 708 427 536 rearrangements tried by then). The best score (40 007 steps) was hit six times, and with 19 trees retained. The trees were further swapped using the tree bisection and reconnection in a ‘traditional search’. A total of 11 808 equally parsimonious trees were found. Bremer supports were calculated with a script for TNT that uses anticonstraints (Peña *et al.* 2006).

3. RESULTS AND DISCUSSION

All the methods agreed on the broad patterns of relationships recovered (figures 1 and 2; see the electronic supplementary material, figures S1 and S2). The best obtained maximum likelihood tree is presented in figure 1 and in more detail in the electronic supplementary material, figure S1. We used this tree as a basis for most of our conclusions. A Bayesian tree of a ditrysian subset of taxa is presented in figure 2. Results of this tree were used to draw conclusions only when very high posterior probability was achieved. The result of the unconstrained parsimony analysis is in general agreement with those obtained using model-based analyses (see the electronic supplementary material, figure S2). The main discrepancies are lower general resolution with many polytomies, and a general pattern of clustering of the most divergent taxa together. This implies the vulnerability of the parsimony analysis to long-branch attraction (Felsenstein 1978). This appears particularly strong in the pattern of long-branched basal non-tineoid ditrysians (bucculatricid complex, Lithocolletiinae + Phyllocnistinae and most divergent putative zygaenoids, Heterogyniidae and Epipyropidae), among which even non-ditrysians Tischeriidae and Nepticulidae, with very long branches, grouped (see the electronic supplementary material, figure S2). Another probable reason for the underperformance of parsimony analysis is its vulnerability to large amounts of homoplasy (Whitfield & Kjer 2008); a feature almost inherently present in nucleotide data. In such cases, likelihood or Bayesian methods applying complex evolutionary models have reported to generally outperform parsimony methods (Gadagkar & Kumar 2005; Gaucher & Miyamoto 2005).

(a) Major phylogenetic patterns

Our results consistently support the sister group relationship between Agathiphaeidae and Heterobathmiidae. The monophyly of Glossata, including all Lepidoptera except Micropterigoidea, Agathiphaeidae and Heterobathmiidae, is supported. Of the other named clades below Ditrysia, we found support for the monophyly of Heteroneura, while our results do not support the monophyly of Coelolepida, Myoglossata and Neolepidoptera. Eulepidoptera become monophyletic after the inclusion of Andesianidae, which always group with Incurvarioidea, not with Tischerioidea as suggested by Simonsen (2009). We found support for the sister group relationship between Tischerioidea and Palaephatoidea, as

suggested in Davis (1986) and Nielsen (1989). They together form the sister group to Ditrysia.

Morphological evidence of the monophyly of Ditrysia is convincing (Nielsen 1989; Kristensen & Skalski 1998), and this huge assemblage is supported by our molecular evidence, as well (but see note about parsimony analysis above). Tineoidea may not be monophyletic, as they are often divided into three separate and always strongly supported lineages, Eriocottidae, Psychidae, including Arrhenophanidae, and Tineidae, including Acrolophidae. The shift of Lypusidae from Tineoidea to Gelechioidea as in Heikkilä & Kaila (2010) is supported. The monophyly of non-tineoid Ditrysia is well supported, although morphological evidence of this assemblage has been scanty (Minet 1991; Kristensen & Skalski 1998).

While non-tineoid Ditrysia and many superfamilies therein appear monophyletic, the relationships within the clade remain largely questionable. Despite low support at many basal nodes, we do not consider the observed patterns uninformative for two reasons. First, the position of non-tineoid ditrysian superfamilies remained constant in various analyses we carried out. Second, there seems to be remarkable congruence between our result and that of Regier *et al.* (2009), even though the two studies are based largely on non-overlapping data. Hence, we consider it justified to keep the tentative branches uncollapsed. Regier *et al.* (2009) concluded that the low ‘backbone’ supports are most likely owing to the short internode branch lengths along the ‘backbone’, reflecting rapid radiation of major ditrysian lineages in the past. This feature, common in many other insect groups as well (Whitfield & Kjer 2008), renders resolving the basal internode relationships challenging.

The supposedly more advanced Ditrysia, i.e. superfamilies other than Tineoidea, Gracillarioidea, Yponomeutoidea and Gelechioidea, have been thought to form three internested clades: Apoditrysia, Obectomera and Macrolepidoptera (Minet 1986, 1991; Nielsen 1989). None of them appeared monophyletic. This result is consistent with that of Regier *et al.* (2009) as a broad pattern, but there are several differences in details. Apoditrysia become monophyletic if Douglassiidae and Gelechioidea as in Kaila (2004) are included. The pattern is largely the same as the one observed by Regier *et al.* (2009), but with a significant conflict in the position of Choreutoidea, Alucitoidea and Urodoidea, which Regier *et al.* (2009) often found among the most basally branching ditrysian lineages after Tineoidea. A reason behind this discrepancy might be the rather unrepresentative taxon sampling in lower Ditrysia in their study. Obectomera are monophyletic if Copromorphoidea and Immoidea are excluded. Immoidea were not included in Regier *et al.* (2009) and Copromorphoidea was similarly found to often fall outside Obectomera. Overall, we found Obectomera to be a more coherent assemblage than did Regier *et al.* (2009). Macrolepidoptera *sensu* Minet (1991) get support only if butterflies (including Hedyloidea and Hesperioidea) and Calliduloidea are excluded; a result consistent with that of Regier *et al.* (2009).

Gracillarioidea never come out as a monophyletic entity, with Douglassiidae consistently coming out as an apoditrysian taxon. Lithocolletiinae and the remaining Gracillarioidea are not always associated with each

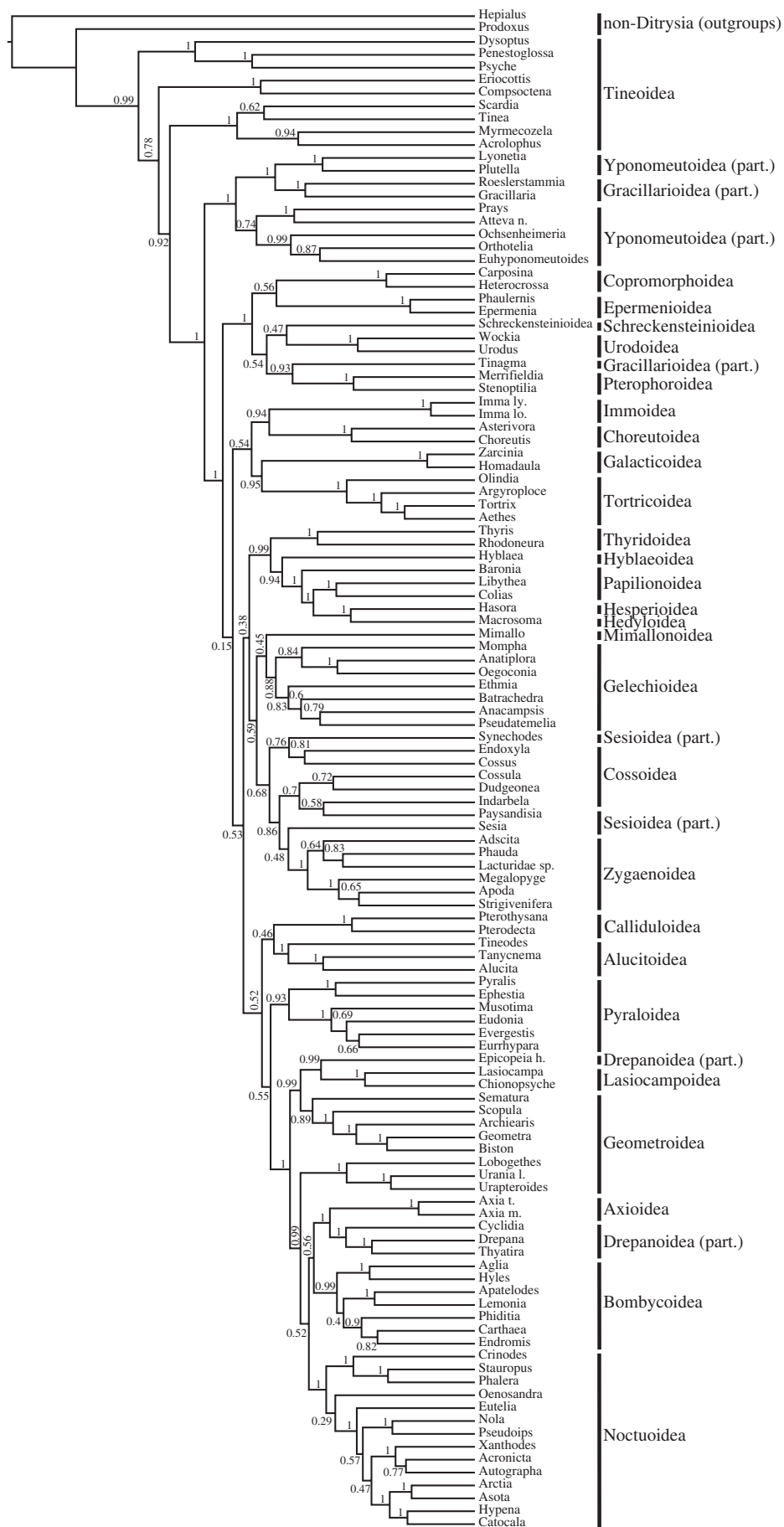


Figure 2. Cladogram of the Bayesian tree of the 118-taxon subset of ditrysian taxa. Posterior probabilities estimated under the GTR + G model (three BEAST runs of 20 million generations each) are shown above the branches. Ditrysian superfamilies are shown on the right.

other. The status of the bucculatricid complex as a gracilarioid taxon is ambiguous. Bucculatricidae are linked with *Ogmograptis* and *Tritymba*, both Australian taxa, the first tentatively associated with Bucculatricidae, and the second formerly placed in Plutellidae (Yponomeutoidea). This complex may alternatively be linked with Zygaenoidea. The remaining Gracillarioidea are found to be either a sister group to, or embedded in, Yponomeutoidea. While almost consistently occurring, this connection is strongly supported only in a Bayesian analysis. Yponomeutoidea (with *Tritymba* excluded) are usually found to be monophyletic (although not in parsimony analysis or Bayesian analysis of a subset of taxa), but similarly consist of only loosely connected taxa. Lyonetiidae appear polyphyletic and Yponomeutidae paraphyletic, with Plutellidae and Lyonetiinae embedded therein. Glyphipterigidae are paraphyletic, with Acrolepiidae and the New Zealand, Tasmanian 'megaplutellids' included.

While being found within the core Macrolepidoptera, the other members of the 'butterfly assemblage' of Minet (1991), including Cimelioidea, Geometroidea and Drepanoidea, do not form a clade. Regier *et al.* (2009) came to the same conclusion. Within Macrolepidoptera, the status of Mimallonoidea as a sister taxon to all the others is often found, which fits their peculiarity of having both microlepidopteran and macrolepidopteran morphological features (Minet 1991). Like Regier *et al.* (2009), we found Mimallonoidea to be an unstable taxon, which in various trials associated with 'microlepidoptera', Bombycoidea or other groups, or even formed its own lineage, leaving its affinities unclear.

Of the most species-rich ditrysian superfamilies, the monophyly of Tortricoidea, Pyraloidea and Noctuoidea are supported, with the exception that Doidae associate with Drepanoidea instead of Noctuoidea. This finding is identical with that observed in Regier *et al.* (2009). Gelechioidea also appear monophyletic, although with low statistical support. A particularly problematic assemblage of ditrysian Lepidoptera concentrates around Cossioidea, Sesiioidea and Zygaenoidea. None of these morphologically heterogeneous superfamilies appear monophyletic, but together they form a near-monophyletic assemblage, with the enigmatic and unstable zygaenoid families Epipyropidae and Cyclotornidae and, curiously, Tinthiinae of Sesiidae falling outside. This pattern is similar to that first suggested by Scott (1986), and observed also by Regier *et al.* (2009), albeit with less comprehensive taxon sampling. Even though Tinthiinae cannot be firmly associated with any other taxa, they never group with Sesiidae, and hence the wasp-like appearance of Sesiidae appears to have evolved twice independently. The unsigned Australian *Heliocosma* group is found within this loose assemblage of taxa.

Several small apoditrysian superfamilies form loose coalitions in the basal region of ditrysian Lepidoptera. Even though each of these superfamilies is found to be monophyletic, their relationships to other groups remain without good support. An assemblage formed of Alucitoidea, Pterophoroidea, Epermenioidea, Schreckensteinoidea, Copromorphoidea and Urodoidea is often found, supplemented with Douglassiidae (Gracillarioidea) and Millieriinae (Choreutoidea). Near that lies another loose concentration of small superfamilies, including Immoidea, Galacticoidea and the core Choreutoidea.

These three superfamilies alternatively form a monophylum with Tortricoidea. Millieriinae never associate with Choreutidae, and Choreutoidea as currently delimited are thus polyphyletic.

True butterflies (Papilionoidea) appear paraphyletic with good support, both Hesperioidea and Hedyloidea nesting within them. A similar result was reported earlier based on molecular data, but this result was obscured by morphological evidence (Wahlberg *et al.* 2005), and later again by Regier *et al.* (2009). Also supporting the finding of Regier *et al.* (2009), Papilionidae seems to be the sister lineage of the other butterflies and skippers. Thyridoidea and Calliduloidea are found to be closely related to butterflies, with the association of Thyridoidea and butterflies being strongly supported in the Bayesian analysis.

The position of Hyblaeoidea, with only one species sampled, is unstable, and we cannot make firm statements about their affinities. They associate sometimes with Pyraloidea, but more often with Thyridoidea and butterflies. With Hyblaeoidea excluded, the clade including Pyraloidea and core Macrolepidoptera becomes well supported, placing most lepidopterans with tympanal organs together. In Macrolepidoptera, Bombycoidea form a monophyletic group, with Anthelidae included, as recently suggested (Regier *et al.* 2008; Zwick 2008). Lasiocampoidea are not found as a sister group to it, contradicting the findings of Regier *et al.* (2008). The core groups of Drepanoidea are monophyletic, with Doidae and Cimelioidea associating with them and Epicopeiidae falling outside, forming a sister group to Lasiocampoidea. This unexpected finding may also be supported by morphology (J. Holloway 2009, personal communication). The association of Lasiocampoidea with Epicopeiidae or the placement of Lasiocampoidea as distinct from Bombycoidea are, however, not well supported findings, and firm statements of their affinities cannot be drawn. Drepanoidea were not found to be a sister group to Geometroidea in any trials.

The monophyly of Geometroidea remains uncertain. Uraniidae, often with Sematuridae, usually form a monophylum with Geometridae, but this is not supported in the Bayesian analysis of the limited subset of taxa. The position of Sematuridae is similarly unstable. It may be the sister group to Uraniidae or Geometridae, may be nested within Geometridae, or alternatively, may form its own lineage within Macrolepidoptera. With the exception of the affinities of Epicopeiidae, these observations are in general agreement with those reported by Regier *et al.* (2009). Noctuoidea without Doidae are a well-supported monophyletic entity. They are divided into six well-supported clades, of which the isolation of the Euteliinae + Stictopterinae clade from 'quadrifine' Noctuidae is a novel finding.

(b) Lower-level interrelationships

An overview of lower-level lepidopteran taxa that were not found monophyletic compared with the classification of Kristensen *et al.* (2007) is presented in the electronic supplementary material, table S3. The putative monophyly of Tineoidea cannot be ruled out with certainty. The superfamily is divided into three well-supported clades, which follows the traditional division (Robinson 1988;

Davis & Robinson 1998) otherwise, but with Arrhenophanidae and Acrolophidae embedded in Psychidae and Tineidae, respectively. Within Psychidae, many interrelationships are well-resolved. Typhoniinae get support as being a sister to the other taxa. The next splitting event is found between Placodominae and the remaining Psychidae. Naryciinae are found paraphyletic with respect to Taleporiinae. In Tineidae, interrelationships remain mostly weakly supported. Harmacloninae often form a sister group to the remaining Tineidae. The two representatives of Myrmecozelinae do not form a monophyletic group, as postulated by Robinson (2009).

In Yponomeutoidea, our results strongly support the monophyly of Ypsolophidae as consisting of Ypsolophinae and Ochsenheimeriinae (Kyrki 1990). In Yponomeutidae, Praydinae and Attevininae are often found as sisters, but in the presented maximum likelihood tree this is obscured by the inclusion of the unstable Cemiostominae (Lyonetiidae) within it. The two subfamilies of Lyonetiidae never formed a monophylum, but both groups are somewhat unstable and branch leading to Cemiostominae is long. Bedelliidae are also unstable, though always found within Yponomeutoidea. The New Zealand and Tasmanian 'megaplutellids', here represented by *Proditrix* and *Doxophyrtis*, are found close to Orthoteliinae of Glyphipterigidae, as suggested by Heppner (2003). Overall, although we tentatively consider Yponomeutoidea monophyletic, it is heterogeneous, and many interrelationships remain to be clarified.

Our findings provide support for the position of Chlidanotinae as a sister group to the other two subfamilies of Tortricidae. Olethreutinae and Tortricinae are both found to be monophyletic and sister groups to each other. *Isonomeutis*, considered an unusual member of Copromorphoidea (Dugdale *et al.* 1998), shows affinities with Alucitoidea. This association is supported by morphology (L. Kaila 2009, personal observation). Tineodidae are paraphyletic, with Alucitidae nested within it.

Neither Cossoidea nor Sesiioidea form monophyletic assemblages, but are embedded within each other; a result generally consistent to that reported in Regier *et al.* (2009). Zygaenoidea are found subordinate to this assemblage. Sesiioidea are found to be polyphyletic, with Tinthiinae falling outside the Sesiioidea–Cossoidea assemblage and Castniidae, Brachodidae and Sesiidae each associating with various taxa of Cossoidea or the unassigned *Heliocosma* group of species. Regier *et al.* (2009) also found Castniidae always associating with Cossoidea rather than Sesiidae. Affinities and composition of the Australian *Heliocosma* group remain to be examined in more detail. *Piestoceros* has been placed under Psychidae in collections and lists (Nielsen *et al.* 1996), although this group has never really been studied. We find it related to *Heliocosma*. Cossidae are found to be polyphyletic, with Dudgeonidae, Metarbelinae and Cossulinae associated with groups other than 'core Cossidae' *i.e.* Cossinae + Zeuzerinae. Alternatively, Cossidae can be considered paraphyletic as Sesiioidea and Zygaenoidea fall within it in this study.

Zygaenoidea are a heterogeneous group of moths defined by hardly any shared characters (Epstein *et al.* 1998). Zygaenoidea are consistently found subordinate to the Cossoidea–Sesiioidea complex, as reported in Regier *et al.* (2009). With the exception of the parasitic

Epipyropidae and Cyclotornidae, which have very long branches and cannot safely be placed anywhere, the superfamily is usually found to be monophyletic, and most interrelationships within the superfamily remain without strong support. The 'core Zygaenoidea' are divided into two lineages, roughly following the patterns found by Regier *et al.* (2009), but with some notable exceptions. Dalceridae are not found as a part of the 'limacodid group', but closer to Zygaenidae and a sister group to Phaudinae, which in turn are supported as falling outside of Zygaenidae, as recently suggested (Fänger *et al.* 1998; Niehuis *et al.* 2006). Lacturidae, Heterogynidae, Dalceridae and Phaudinae together form a sister group to 'core Zygaenidae'. The 'limacodid group' is consistently found, but with Dalceridae excluded and with inclusion of Himantopteridae and Anomoeotidae, which were not included in Regier *et al.*'s (2009) study. These two closely related families group with Aididae, together forming a strongly supported clade. It is therefore probable that Himantopteridae, Anomoeotidae, Somabachyidae and Aididae form a monophyletic clade within the Limacodidae, rendering this family paraphyletic. Even though there is no molecular evidence supporting the placement of Epipyropidae and Cyclotornidae within Zygaenoidea, the morphology of their immature stages is in favour of this position (Epstein *et al.* 1998).

Within Gelechioidea our results support some of the groupings of Hodges (1998) and Kaila (2004), but most affinities remain without support. Xyloryctinae get support as being a sister to Coleophorinae rather than Scythridinae. Autostichidae become monophyletic only with Glyphidoceridae and Deoclonidae included. *Stathmopoda* is not closely related to *Oecophora*, and it is therefore unlikely that Oecophoridae (*sensu* Hodges 1998) are monophyletic, a result also observed by Kaila (2004). Elachistidae (*sensu* Hodges 1998 or Kaila 2004) never form a monophyletic entity. The division of Pyraloidea into Pyralidae and Crambidae (Solis & Mitter 1992) is supported with high confidence. In Pyralidae, the result is consistent with that presented in Regier *et al.* (2009). In Crambidae, our results are not consistent with those reported earlier (Solis & Maes 2002), with their main division between 'spilomeline' and 'pyraustine' groups not supported. Our results broadly agree with the results of Regier *et al.* (2009).

In Lasiocampoidea, Chionopsychinae were found to be the first diverging lineage and Lasiocampinae were a sister to Poecilocampinae, the latter finding being contradictory to that observed by Regier *et al.* (2008). Within Geometridae, our findings are in moderate agreement with those of Young (2006) and agree almost perfectly with those observed by other recent studies (Yamamoto & Sota 2007; Regier *et al.* 2009; Wahlberg *et al.* in press). Larentiinae + Sterrhinae are found to form the sister group to all other Geometridae. Archiariae, formerly considered the first diverging lineage, are supported as subordinate to Larentiinae + Sterrhinae and sister to the lineage comprising Geometrinae, Oenochrominae and Ennominae.

While all maximum likelihood analyses supported Oenosandridae as being the sister group to all other Noctuoidea, this result was not unambiguously achieved in the Bayesian analysis. The monophyly of Notodontidae, Nolidae, Erebiidae and Noctuidae is supported.

Euteliinae + Stictopterinae form a separate, strongly supported lineage, which is found as a sister group to Noctuidae. Formerly, the group has been associated with 'quadrifine Noctuidae' or Erebiidae (Lafontaine & Fibiger 2006; Mitchell *et al.* 2006). As first observed by Weller *et al.* (1994) and later further supported by Mitchell *et al.* (2006), the arctiids and lymantriids, formerly considered valid families within Noctuoidea, are deeply embedded in Noctuidae. We found them both within Erebiidae, which is consistent with the findings of Mitchell *et al.* (2006).

(c) *Lepidoptera-flowering plant co-radiation*

Lepidoptera are the largest group of insects that are almost exclusively dependent on angiosperm plants (Powell *et al.* 1998) and are clearly a difficult group to resolve phylogenetically (Regier *et al.* 2009). The other megadiverse clades of insects have phytophagous groups, but large components of those clades feed on other resources. Lepidoptera are likely to have diversified in concert with angiosperm plants, which have an evolutionary history reaching back about 150 Myr (Magallón & Castillo 2009). Even though angiosperms prevail as the hosts of most monotrysian Lepidoptera as well, it is possible that the advent of Ditrysia coincided with the timing of the great diversification of flowering plants, thus facilitating fast adaptive radiation of these Lepidoptera (Whitfield & Kjer 2008). Our results with short basal branches in the ditrysian clade suggest that the initial expansion onto angiosperm plants may have happened rapidly and led to a rapid radiation of lineages that we now recognize as superfamilies. However, a formal analysis of this hypothesis is beyond the scope of this study.

4. CONCLUSIONS

This study, to our knowledge the most comprehensive analytical study on ditrysian lepidopteran phylogeny so far, suggests that the ditrysian Lepidoptera are monophyletic, with Tischerioidea + Palaephatoidea being their sister group. The superfamilies and most families are connected to each other with short nodes, but the findings are, in spite of the weak statistical support for many groupings, often in close agreement with another recent study (Regier *et al.* 2009). The non-tineoid Ditrysia is well supported. Even though none of the proposed major clades of more advanced Ditrysia, i.e. Apoditrysia, Obtectomera and Macrolepidoptera was supported as currently delineated, they get support from the present analysis after some adjustment. Many recognized superfamilies and families were found to be either para- or polyphyletic, though generally with weak support. The generally short nodes supporting the monophyly of most superfamilies imply a rapid radiation in the past, presumably in concert with the diversification of flowering plants. We anticipate that a more comprehensive taxon and gene sampling, supported by a rigorous analysis of comprehensive morphological data, will, in the future, provide a more robust backbone for the phylogeny of Lepidoptera.

A notable amount of material for this study was provided by the Leptree project, headed by C. Mitter (US NSF award no. 0531769). The following people also helped in obtaining DNA material for the study: K. Ambil, E. D. Edwards, S. Haapala, P. Hirvonen, R. Hoare, M. Horak, J. Itämes, D. Janzen (US NSF awards nos DEB0072730 and

DEB0515699), J. Junnilainen, U. Jürivete, J. Kaitila, A. Kallies, A. Karhu, O. Karsholt, T. Klemetti, C. Kokx, H. Kronholm, J. Kullberg, J.-F. Landry, J. Lehto, P. Malinen, V. S. Monteys, T. Mutanen, E. Nieuwerkerken, K. Nupponen, O. Pellmyr, T. Roslin, P. Välimäki, B. Wikström and J. Zwier. We are grateful to M. Heikkilä for commenting and editing the text, K. Kosola for improving language, and L. Kvist, P. Kärkkäinen and R. Zahiri for their technical help. We also thank R. Hoare, M. Horak and C. Young for hosting our visits to Australia and New Zealand, C. Peña for providing efficient facilities for sequence handling, two anonymous referees for useful comments, as well as M. Horak, J. Holloway, C. Mitter and many other colleagues for fruitful discussions. This work was funded by the Academy of Finland through grants awarded to L.K. (project 1110906) and N.W. (projects 118369 and 129811).

REFERENCES

- Davis, D. R. 1986 A new family of monotrysian moths from austral South America (Lepidoptera: Palaephatidae), with a phylogenetic review of the Monotrysia. *Smith. Contr. Zool.* **434**, 1–202.
- Davis, D. & Robinson, G. S. 1998 The Tineoidea and Gracillarioidea. In *Handbook of zoology, vol. IV, Arthropoda: Insecta, part 35, Lepidoptera, moths and butterflies*, vol. 1 (ed. N. P. Kristensen), pp. 91–117. Berlin, Germany: Walter de Gruyter.
- Drummond, A. J. & Rambaut, A. 2007 BEAST: Bayesian evolutionary analysis by sampling trees. *BMC Evol. Biol.* **7**, 214. (doi:10.1186/1471-2148-7-214)
- Dugdale, J. S., Kristensen, N. P., Robinson, G. S. & Scoble, M. J. 1998 The smaller Microlepidoptera-grade superfamilies. In *Handbook of zoology, vol. IV, Arthropoda: Insecta, part 35, Lepidoptera, moths and butterflies*, vol. 1 (ed. N. P. Kristensen), pp. 217–232. Berlin, Germany: Walter de Gruyter.
- Epstein, M. E., Geertsema, H., Naumann, C. M. & Tarmann, G. M. 1998 The Zygaenoidea. In *Handbook of zoology, vol. IV, Arthropoda: Insecta, part 35, Lepidoptera, moths and butterflies*, vol. 1 (ed. N. P. Kristensen), pp. 159–180. Berlin, Germany: Walter de Gruyter.
- Fänger, H., Yen, S.-H. & Naumann, C. M. 1998 External morphology of the last instar larva of *Phauda mimica* Strand, 1915 (Lepidoptera: Zygaenoidea). *Entomol. Scand.* **29**, 429–450.
- Felsenstein, J. 1978 Cases in which parsimony or compatibility methods will be positively misleading. *Syst. Zool.* **27**, 401–410. (doi:10.2307/2412923)
- Gadagkar, S. R. & Kumar, S. 2005 Maximum likelihood outperforms maximum parsimony even when evolutionary rates are heterotachous. *Mol. Biol. Evol.* **22**, 2139–2141. (doi:10.1093/molbev/msi212)
- Gaucher, E. A. & Miyamoto, M. M. 2005 A call for likelihood phylogenetics even when the process of sequence evolution is heterogeneous. *Mol. Phyl. Evol.* **37**, 928–931. (doi:10.1016/j.ympev.2005.03.027)
- Goloboff, P. A., Farris, J. S. & Nixon, K. C. 2008 TNT, a free program for phylogenetic analysis. *Cladistics* **24**, 774–786. (doi:10.1111/j.1096-0031.2008.00217.x)
- Hall, T. A. 1999 BioEdit: a user-friendly biological sequence alignment editor and analysis program for Windows 95/98/NT. *Nucleic Acids Symp. Ser.* **41**, 95–98.
- Heikkilä, M. & Kaila, L. 2010 Reassessment of the enigmatic Lepidopteran family Lypusidae (Lepidoptera: Tineoidea; Gelechioidea). *Syst. Entomol.* **35**, 71–89. (doi:10.1111/j.1365-3113.2009.00483.x)
- Hepner, J. B. 2003 Primitive sedge moths from New Zealand and Tasmania: transfer of *Proditrix* and relatives

- to Orthoteliinae (Lepidoptera: Glyphipterigidae). *Lepid. News* **1–2**, 31–42.
- Hodges, R. W. 1998 The Gelechioidea. In *Handbook of zoology, vol. IV, Arthropoda: Insecta, part 35, Lepidoptera, moths and butterflies*, vol. 1 (ed. N. P. Kristensen), pp. 131–158. Berlin, Germany: Walter de Gruyter.
- Hunt, T. *et al.* 2007 A comprehensive phylogeny of beetles reveals the evolutionary origins of a superradiation. *Science* **318**, 1913–1916. (doi:10.1126/science.1146954)
- Kaila, L. 2004 Phylogeny of the superfamily Gelechioidea (Lepidoptera: Ditrysia): an exemplar approach. *Cladistics* **20**, 303–340. (doi:10.1111/j.1096-0031.2004.00027.x)
- Kolaczowski, B. & Thornton, J. W. 2009 Long-branch attraction bias and inconsistency in Bayesian phylogenetics. *PLoS One* **4**, e7891. (doi:10.1371/journal.pone.0007891)
- Kristensen, N. P. & Skalski, A. W. 1998 Phylogeny and palaeontology. In *Handbook of zoology, vol. IV, Arthropoda: Insecta, part 35, Lepidoptera, moths and butterflies*, vol. 1 (ed. N. P. Kristensen), pp. 7–25. Berlin, Germany: Walter de Gruyter.
- Kristensen, N. P., Scoble, M. & Karsholt, O. 2007 Lepidoptera phylogeny and systematics: the state of inventorying moth and butterfly diversity. *Zootaxa* **1668**, 699–747.
- Kyrki, J. 1990 Tentative reclassification of holarctic Yponomeutoidea (Lepidoptera). *Nota Lepid.* **13**, 28–42.
- Lafontaine, J. D. & Fibiger, M. 2006 Revised higher classification of the Noctuidae (Lepidoptera). *Can. Entomol.* **138**, 610–635. (doi:10.4039/N06-012)
- Magallón, S. & Castillo, A. 2009 Angiosperm diversification through time. *Am. J. Bot.* **96**, 349–365. (doi:10.3732/ajb.0800060)
- Minet, J. 1986 Ebauche d'une classification moderne de l'ordre des Lépidoptères. *Alexandria* **14**, 291–313.
- Minet, J. 1991 Tentative reconstruction of the ditrysiian phylogeny (Lepidoptera: Glossata). *Entomol. Scand.* **22**, 69–957.
- Mitchell, A., Mitter, C. & Regier, J. C. 2006 Systematics and evolution of the cutworm moths (Lepidoptera: Noctuidae Noctuoidea): evidence from two protein-coding nuclear genes. *Syst. Entomol.* **31**, 21–46. (doi:10.1111/j.1365-3113.2005.00306.x)
- Niehuis, O., Yen, S.-H., Naumann, C. M. & Misof, B. 2006 Higher phylogeny of zygaenid moths (Insecta: Lepidoptera) inferred from nuclear and mitochondrial sequence data and the evolution of larval cuticular cavities for chemical defence. *Mol. Phylogenet. Evol.* **39**, 812–829. (doi:10.1016/j.ympev.2006.01.007)
- Nielsen, E. S. 1989 Phylogeny of major lepidopteran groups. In *The Hierarchy of Life* (eds B. Fernholm, K. Bremer & H. Jörnvall), pp. 281–294. Amsterdam, The Netherlands: Elsevier.
- Nielsen, E. S., Edwards, E. D. & Rangsi, T. V. 1996 *Checklist of the Lepidoptera of Australia*. Monographs on Australian Lepidoptera, vol. 4. Canberra, Australia: CSIRO publishing.
- Peña, C., Wahlberg, N., Weingartner, E., Kodandaramaiah, U., Nylin, S., Freitas, A. V. L. & Brower, A. V. Z. 2006 Higher level phylogeny of Satyrinae butterflies (Lepidoptera: Nymphalidae) based on DNA sequence data. *Mol. Phylogenet. Evol.* **40**, 29–49. (doi:10.1016/j.ympev.2006.02.007)
- Powell, J. A., Mitter, C. & Farrell, B. 1998 Evolution of larval food preferences in Lepidoptera. In *Handbook of zoology, vol. IV, Arthropoda: Insecta, part 35, Lepidoptera, moths and butterflies*, vol. 1 (ed. N. P. Kristensen), pp. 403–422. Berlin, Germany: Walter de Gruyter.
- Ratnasingham, S. & Hebert, P. D. 2007 BOLD: the barcode of life data systems. *Mol. Ecol. Notes* **7**, 355–364. (doi:10.1111/j.1471-8286.2007.01678.x)
- Regier, J. C., Cook, C. P., Mitter, C. & Hussey, A. 2008 A phylogenetic study of the 'bombycoid complex' (Lepidoptera) using five protein-coding nuclear genes, with comments on the problem of macrolepidopteran phylogeny. *Syst. Entomol.* **33**, 175–189.
- Regier, J. C. *et al.* 2009 Toward reconstructing the evolution of advanced moths and butterflies (Lepidoptera: Ditrysia): an initial molecular study. *BMC Evol. Biol.* **9**, 280. (doi:10.1186/1471-2148-9-280)
- Robinson, G. S. 1988 A phylogeny for the Tineoidea (Lepidoptera). *Entomol. Scand.* **19**, 117–129.
- Robinson, G. 2009 *Biology, distribution and diversity of tineid moths*. Kuala Lumpur, Malaysia: Natural History Museum.
- Roe, A. D. *et al.* 2010 Evolutionary framework for Lepidoptera model systems. In *Genetics and molecular biology of lepidoptera* (eds M. Goldsmith & F. Marec), pp. 1–24. Boca Raton, FL: CRC Press.
- Scott, J. A. 1986 On the monophyly of the Macrolepidoptera, including a reassessment of their relationship to Cossioidea and Cstnioidea, and a reassignment of Mimallonidae to Pyraloidea. *J. Res. Lepid.* **25**, 30–38.
- Sharkey, M. J. 2007 Phylogeny and classification of Hymenoptera. *Zootaxa* **1668**, 521–548.
- Simonsen, T. 2009 Wing vestiture of the newly described monotrysiian Lepidoptera family Andesianidae Davis and Gentili suggests affinity with the putative Tischerioidea–Ditrysia clade (Insecta: Lepidoptera). *Stud. Neotrop. Fauna Environ.* **44**, 109–114. (doi:10.1080/01650520902956042)
- Solis, M. A. & Maes, K. V. N. 2002 Preliminary phylogenetic analysis of the subfamilies of Crambidae (Pyraloidea: Lepidoptera). *Belgian J. Entomol.* **4**, 53–95.
- Solis, M. A. & Mitter, C. 1992 Review and phylogenetic analysis of the Pyralidae (*sensu stricto*) (Lepidoptera: Pyralidae) and placement of the Epipaschiinae. *Syst. Entomol.* **17**, 79–90. (doi:10.1111/j.1365-3113.1992.tb00323.x)
- Stamatidakis, A., Hoover, P. & Rougemont, J. A. 2008 Rapid bootstrap algorithm for the RAxML web-servers. *Syst. Biol.* **75**, 758–771.
- Suzuki, Y., Glazko, G. V. & Nei, M. 2002 Overcredibility of molecular phylogenies obtained by Bayesian phylogenetics. *Proc. Natl Acad. Sci. USA* **99**, 16 138–16 143. (doi:10.1073/pnas.212646199)
- Wahlberg, N. & Wheat, C. H. 2008 Genomic outposts serve the phylogenetic pioneers: designing novel nuclear markers for genomic DNA extractions of Lepidoptera. *Syst. Biol.* **57**, 231–242. (doi:10.1080/10635150802033006)
- Wahlberg, N. *et al.* 2005 Synergistic effects of combining morphological and molecular data in resolving the phylogeny of butterflies and skippers. *Proc. R. Soc. B* **272**, 1577–1586. (doi:10.1098/rspb.2005.3124)
- Wahlberg, N., Snäll, N., Viidalepp, J., Ruohomäki, K. & Tammaru, T. In press The evolution of female flightlessness among Ennominae of the Holarctic forest zone (Lepidoptera, Geometridae). *Mol. Phylogenet. Evol.* (doi:10.1016/j.ympev.2010.01.025)
- Weller, S. J., Martin, J. A. & Constable, J. L. 1994 Phylogeny of Noctuid moths and the utility of combining independent nuclear and mitochondrial genes. *Syst. Biol.* **43**, 194–211.
- Whitfield, J. B. & Kjer, K. M. 2008 Ancient rapid radiations of insects: challenges for phylogenetic analysis. *Annu. Rev. Entomol.* **53**, 449–472. (doi:10.1146/annurev.ento.53.103106.093304)

- Wiegmann, B. M., Regier, J. C. & Mitter, C. 2002 Combined molecular and morphological evidence of the phylogeny of the earliest lepidopteran lineages. *Zoologica Scripta* **31**, 67–81. (doi:10.1046/j.0300-3256.2001.00091.x)
- Yamamoto, S. & Sota, T. 2007 Phylogeny of the Geometridae and the evolution of winter moths inferred from a simultaneous analysis of mitochondrial and nuclear genes. *Mol. Phylogenet. Evol.* **44**, 711–723. (doi:10.1016/j.ympev.2006.12.027)
- Yeates, D. K., Wiegmann, B. M., Courtney, G. W., Meier, R., Lambkin, C. & Pape, T. 2007 Phylogeny and systematics of Diptera: two decades of progress and prospects. *Zootaxa* **1668**, 565–590.
- Yen, S.-H. & Minet, J. 2007 Cimelioidea: a new superfamily name for the gold moths (Lepidoptera: Glossata). *Zool. Stud.* **46**, 262–271.
- Young, C. J. 2006 Molecular relationships of the Australian Ennominae (Lepidoptera: Geometridae) and implications for the phylogeny of the Geometridae from molecular and morphological data. *Zootaxa* **1264**, 1–147.
- Zwick, A. 2008 Molecular phylogenetics of Anthelidae and other bombycoid taxa (Lepidoptera: Bombycoidea). *Syst. Entomol.* **33**, 190–209.