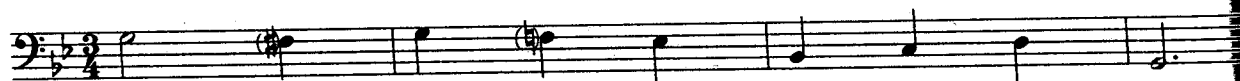


Given problem:



1. Chords analyzed: i $\frac{6}{5}$ V $\frac{6}{5}$ i v6 iv6 i6 ii $\frac{0}{6}$ V# i

2. Structural pitches:



3. Filling in:



4. Checking:

n.t. p.t. susp. p.t. p.t. p.t.

g: i $\frac{6}{5}$ i v6 iv6 i6 ii $\frac{0}{6}$ V# i

GIVEN UPPER VOICE

1. Work out the chordal and nonharmonic tone implications and cadence type. Give alternate possible chord choices.
2. Write a bass line resulting from your chord choices, working for typical progressions, strong harmonic intervals, a strong line, typical use of inversions and nonharmonic tones, and a good contrapuntal relationship to the given voice.
3. Check your work, analyzing all chords, nonharmonic tones, and vertical intervals.

Given problem (analyzed):