



***IRRIGAÇÃO  
ARTERIAL E  
VENOSA DA  
CABEÇA***

## **OBJETIVOS GERAIS**

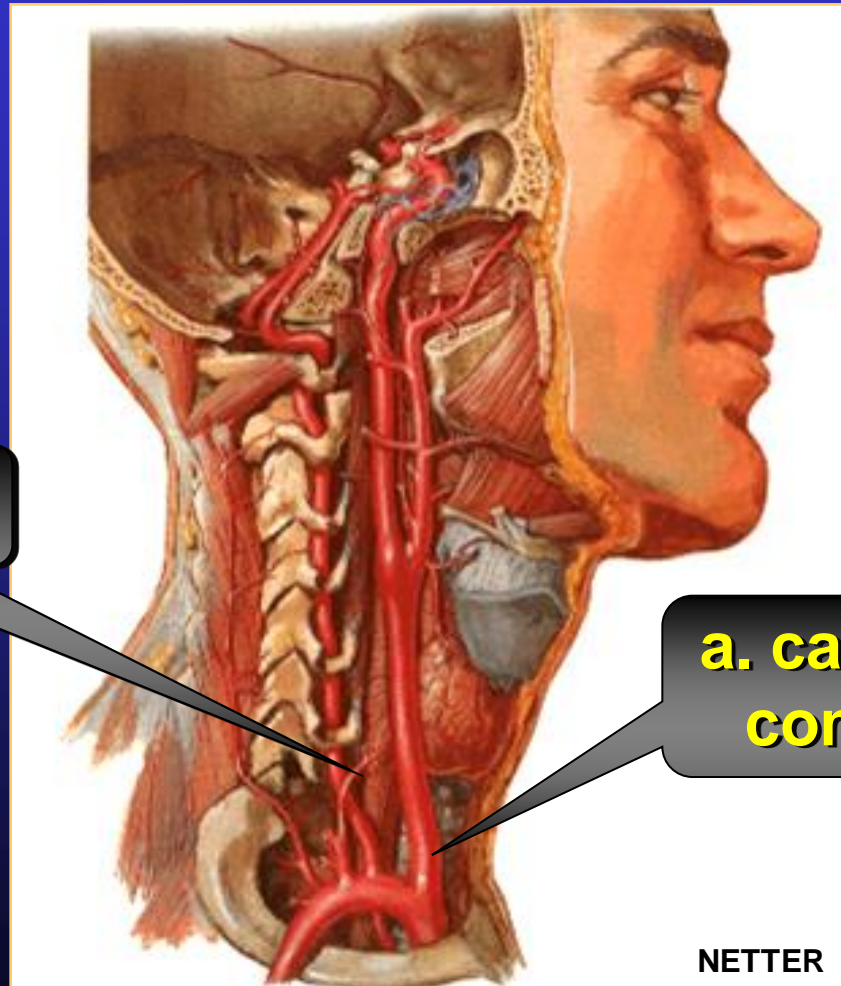
- **Fornecer informações anatômicas básicas sobre a irrigação arterial e venosa da cabeça, para favorecer a compreensão de conteúdos que serão ministrados concomitante ou posteriormente, como a fisiologia e a patologia que acometem o sistema estomatognático.**
- **Fornecer as relações anatômicas das principais artérias e veias que irrigam a cabeça, para favorecer a intervenção clínica segura, pelos alunos do curso de Odontologia .**

# Diferenças entre artérias e veias

- Quanto as:
- 1) camadas ou túnicas constituintes
- 2) número e calibre
- 3) profundidade
- 4) tensão elástica
- 5) trajeto (retilíneo e sinuoso)
- 6) secção transversal
- 7) variação anatômica
- 8) anastomoses
- 9) válvulas
- 10) sentido da circulação em relação ao coração

# Drenagem arterial da cabeça e pescoço

# ARTÉRIAS QUE SUPREM A CABEÇA E PESCOÇO



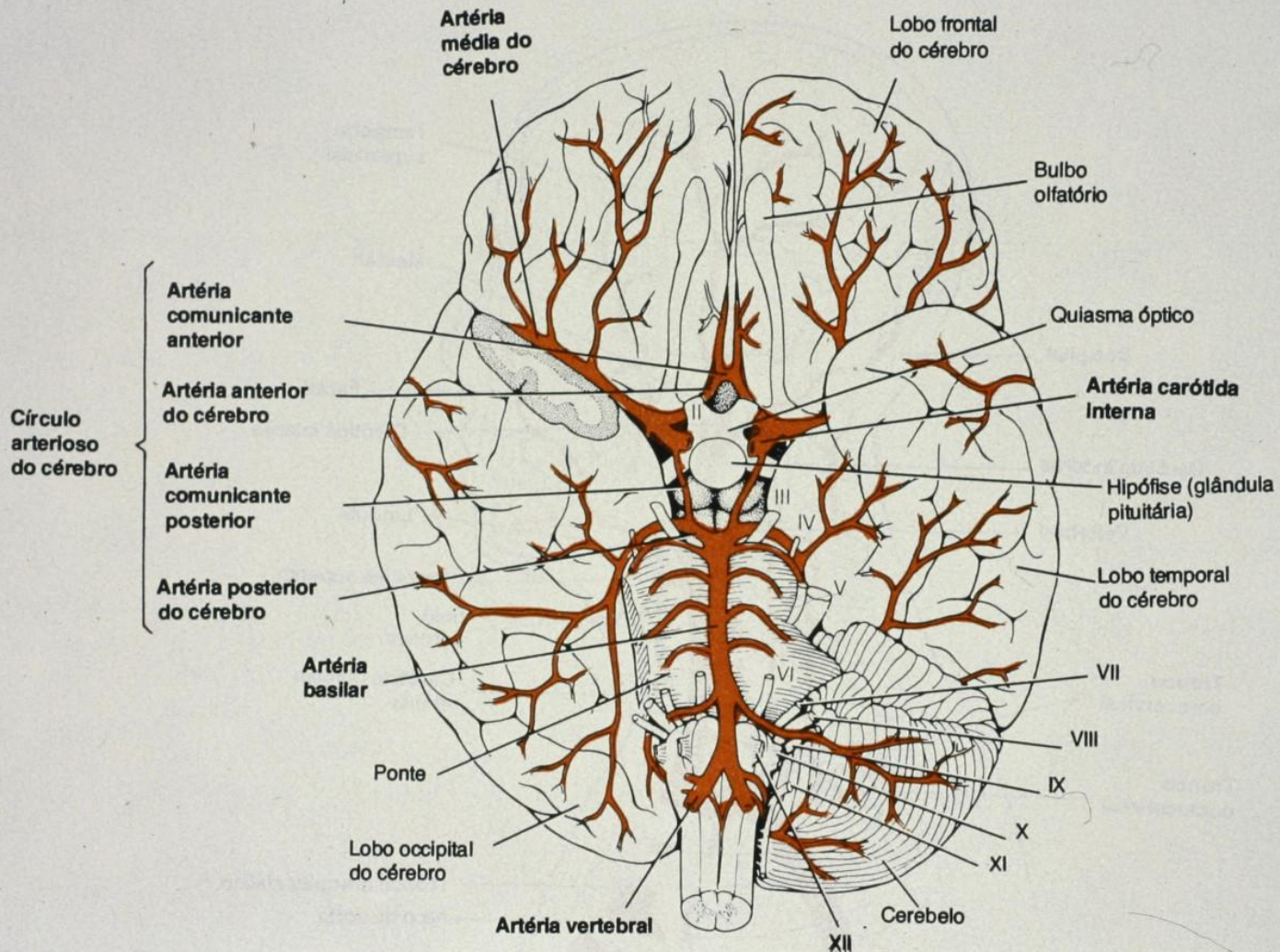
**a. vertebral**

**a. carótida  
comum**

NETTER



# ARTÉRIA VERTEBRAL



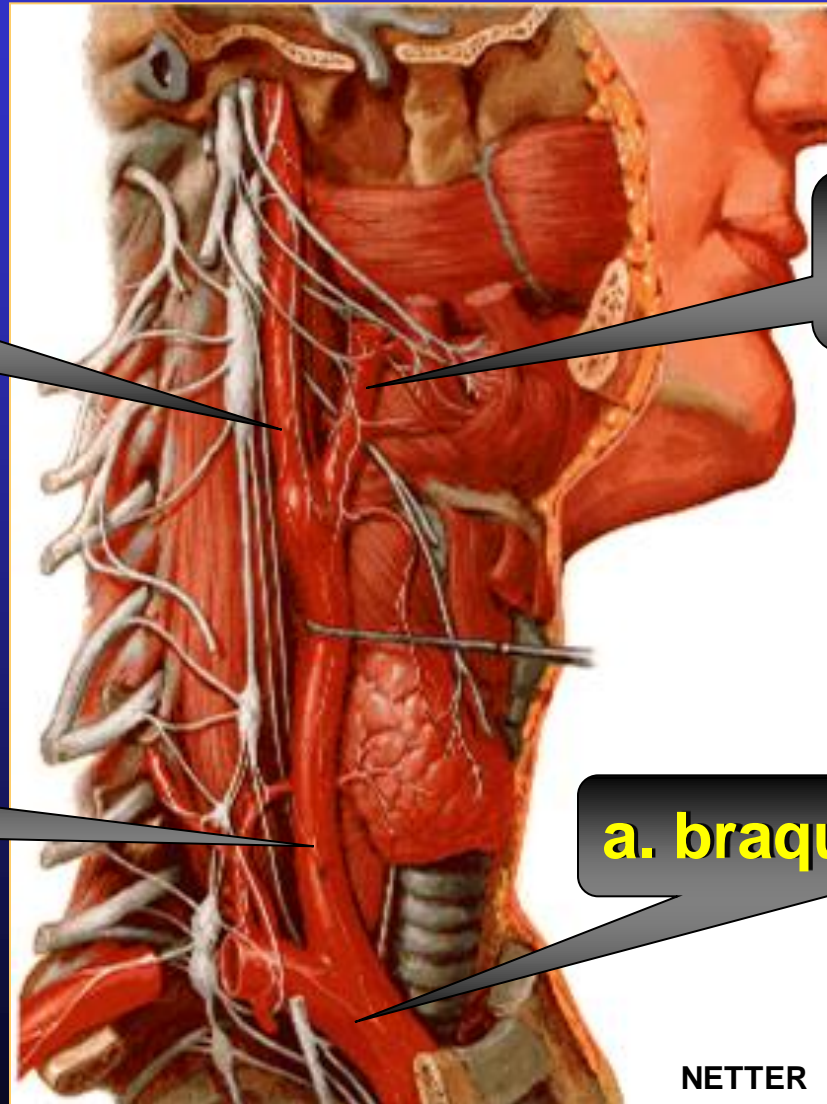
# ARTÉRIA CARÓTIDA COMUM

**a. carótida  
interna**

**a. carótida  
externa**

**a. carótida  
comum**

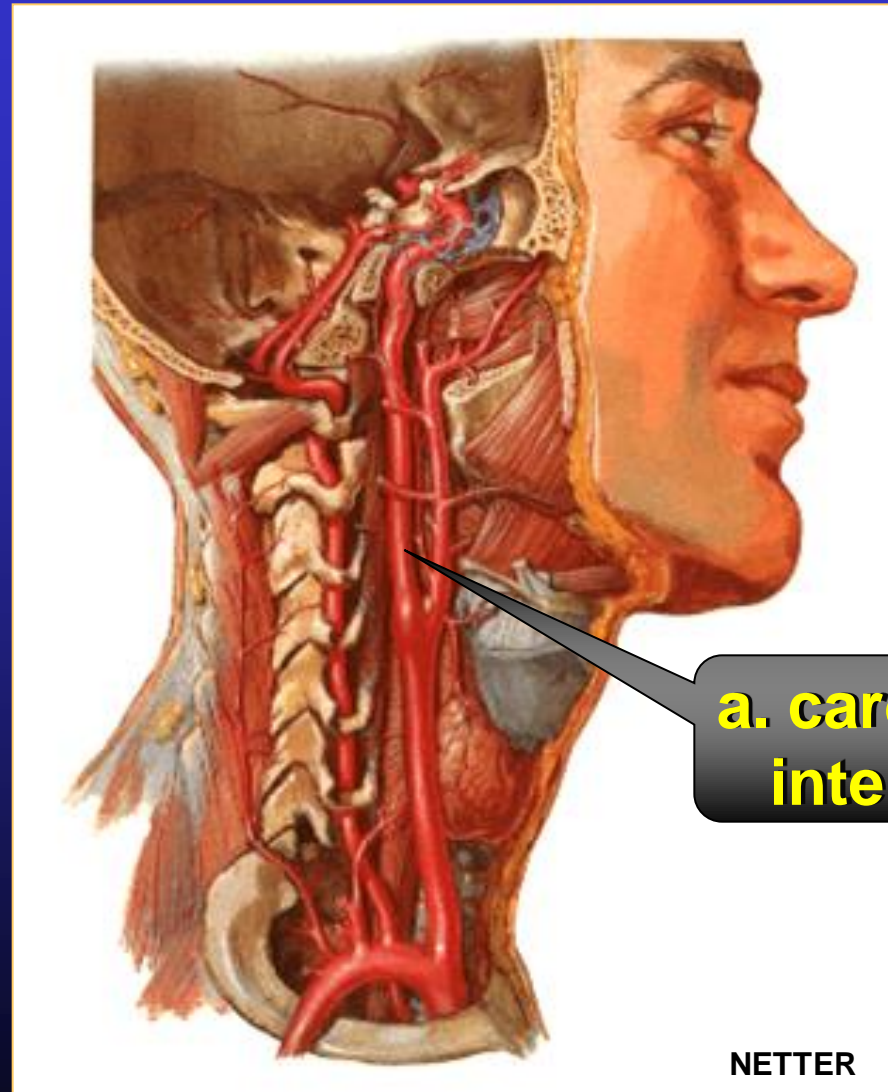
**a. braquiocefálica**



NETTER

# ARTÉRIA CARÓTIDA INTERNA

- ✓ Origem
- ✓ Destino
- ✓ Acidente anatômico



**a. carótida  
interna**

NETTER



# ARTÉRIA CARÓTIDA EXTERNA

**Origem:**

✓ a. carótida comum

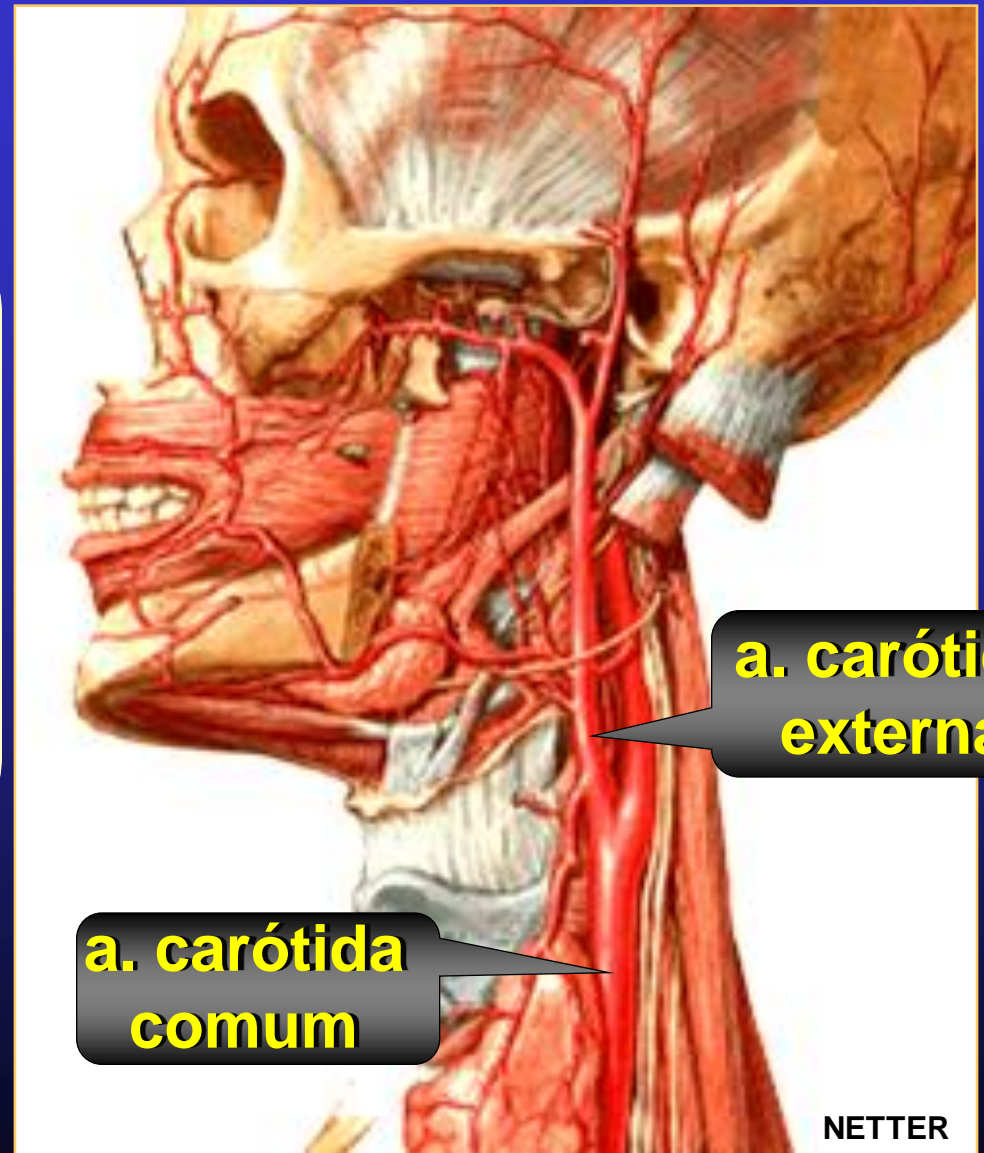
**Destino:**

✓ cavidade bucal

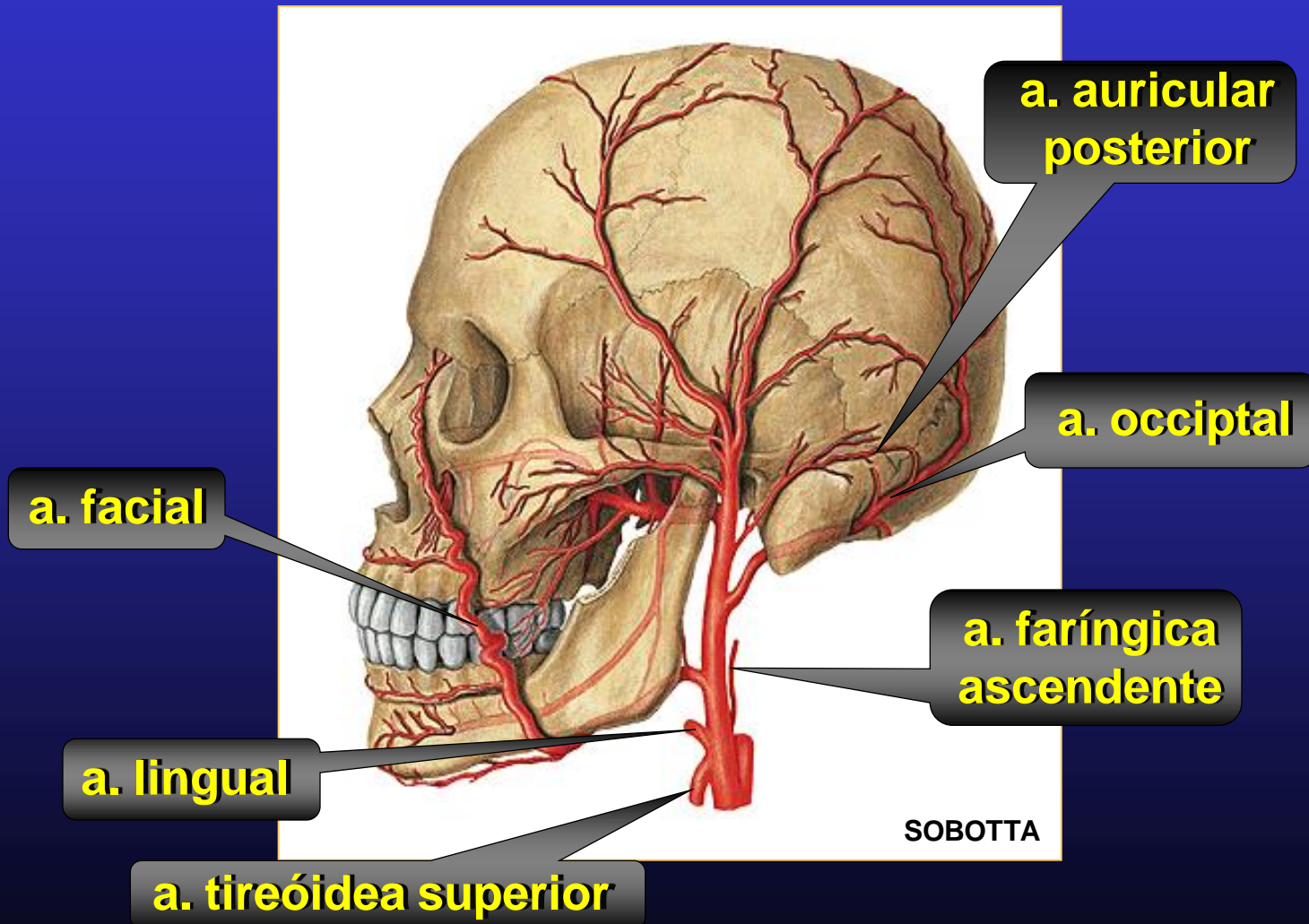
✓ partes moles da cabeça

✓ meninges

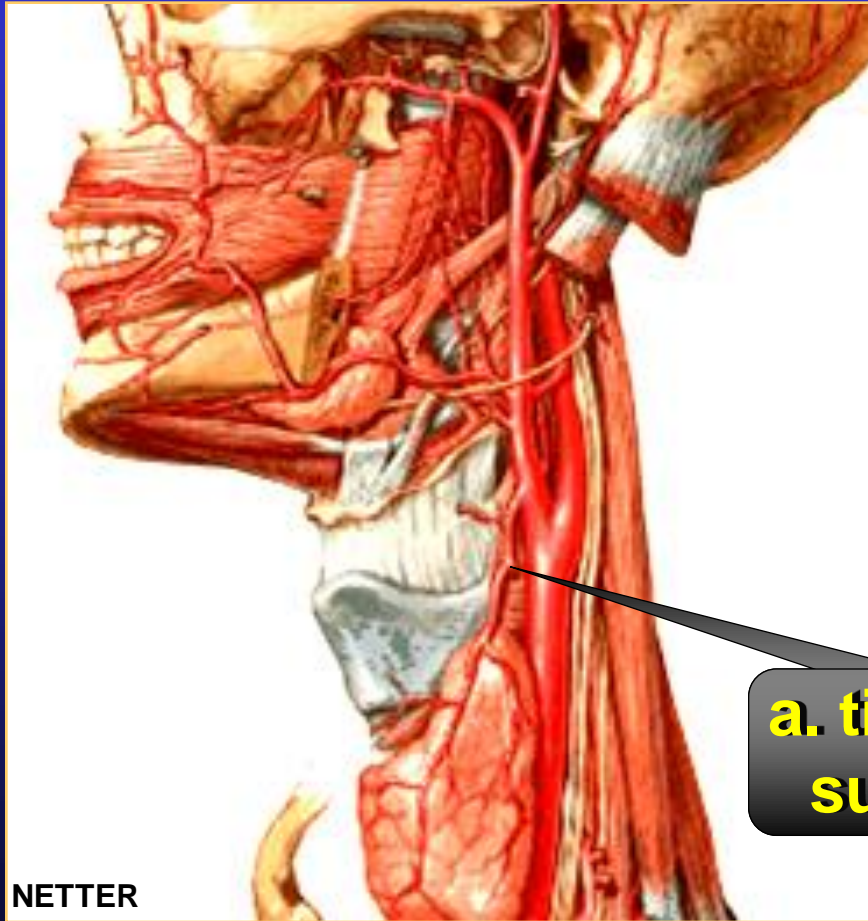
✓ regiões do pescoço



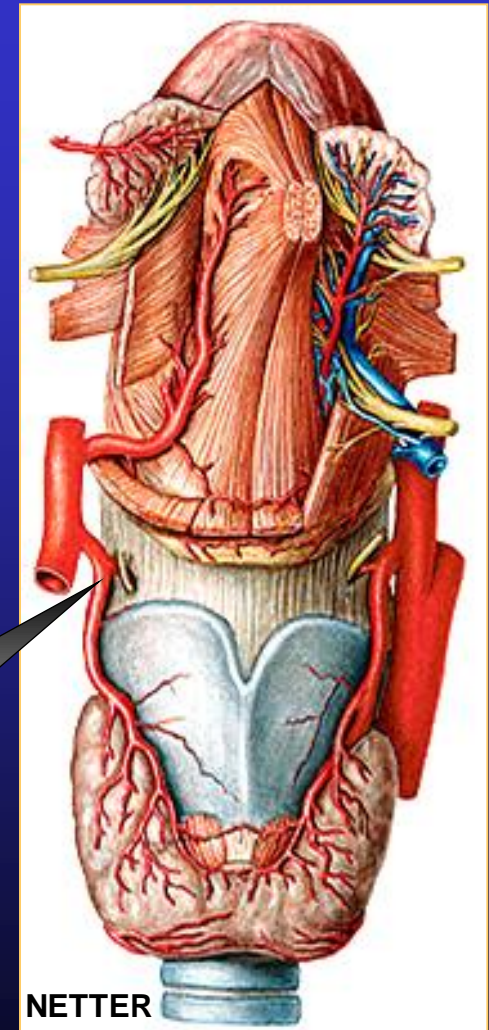
# Ramos colaterais da ARTÉRIA CARÓTIDA EXTERNA



# ARTÉRIA TIREÓIDEA SUPERIOR

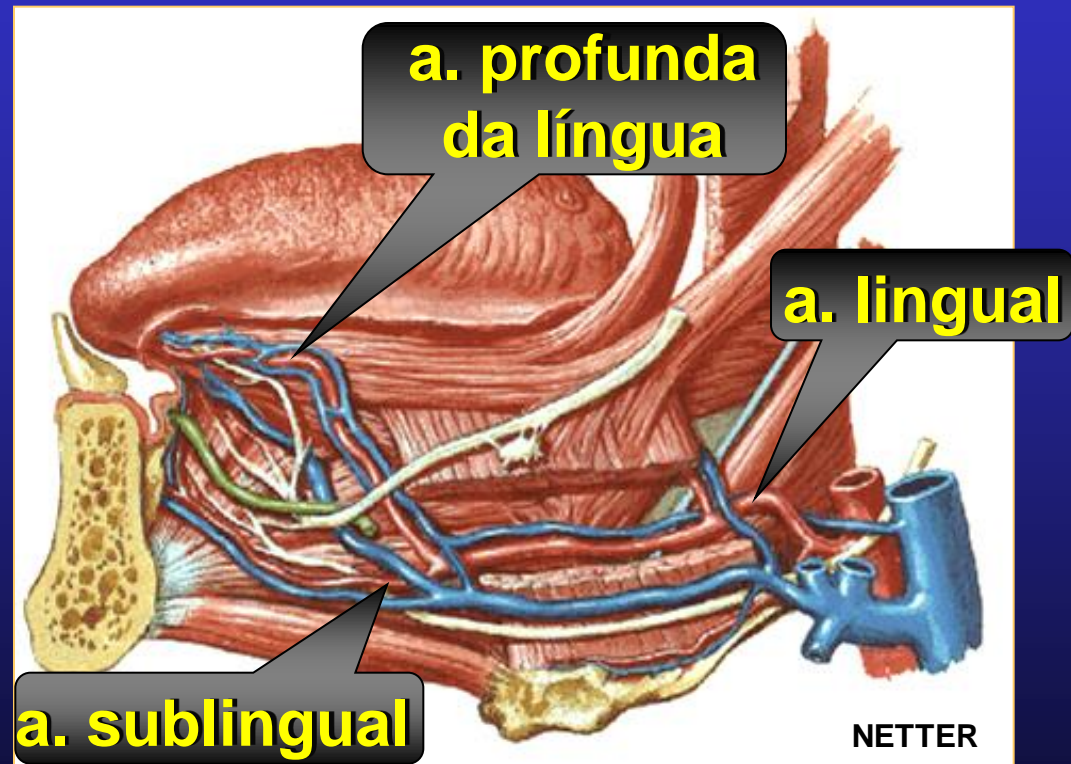
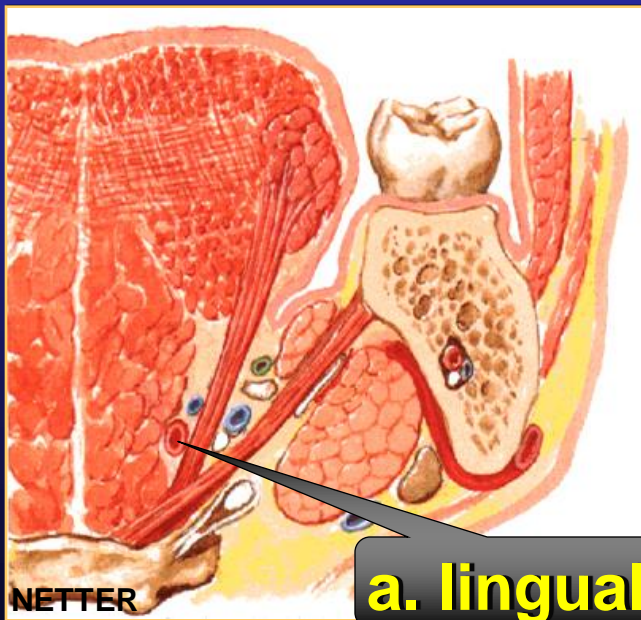
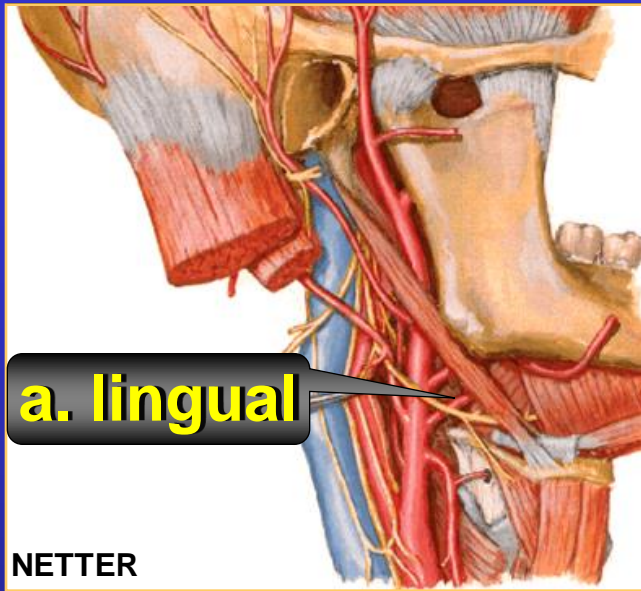


**a. tireóidea superior**

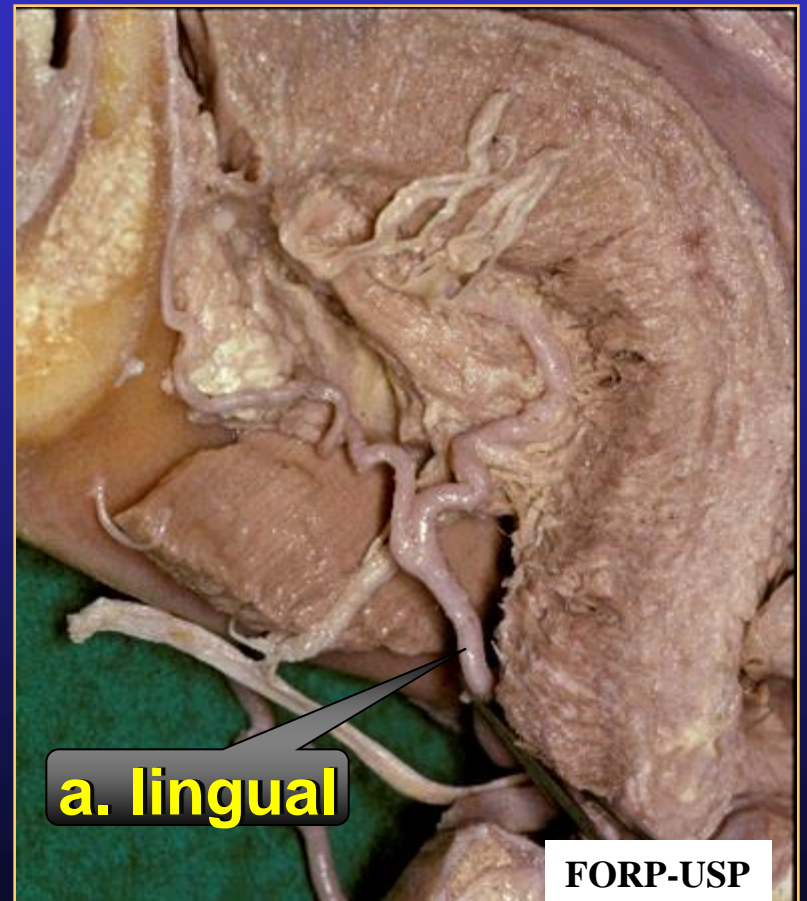
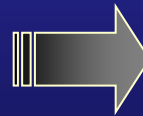
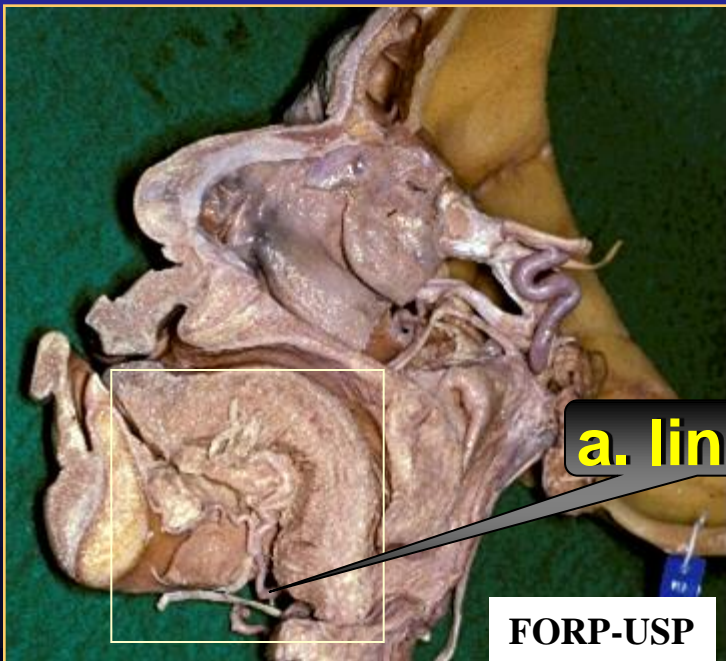




# ARTÉRIA LINGUAL

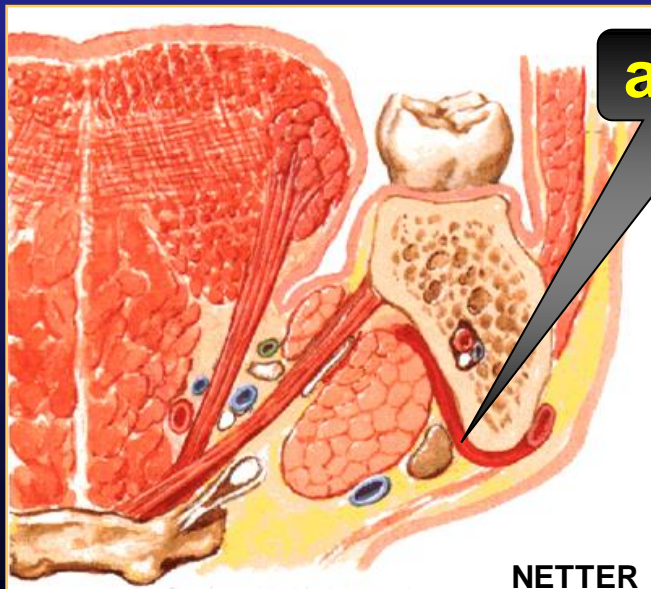
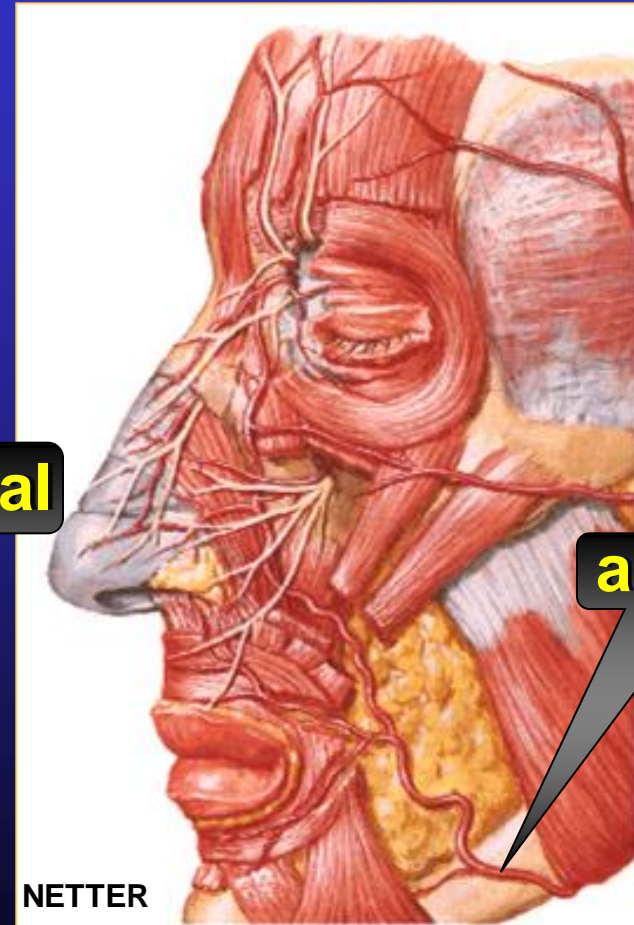
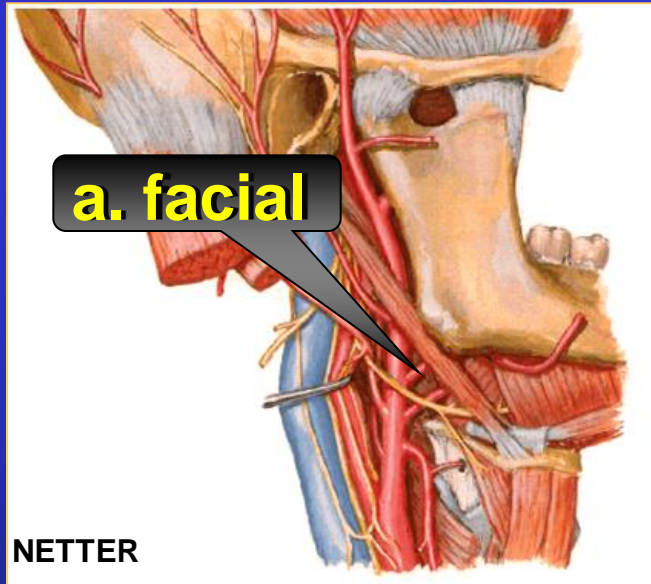


# ARTÉRIA LINGUAL



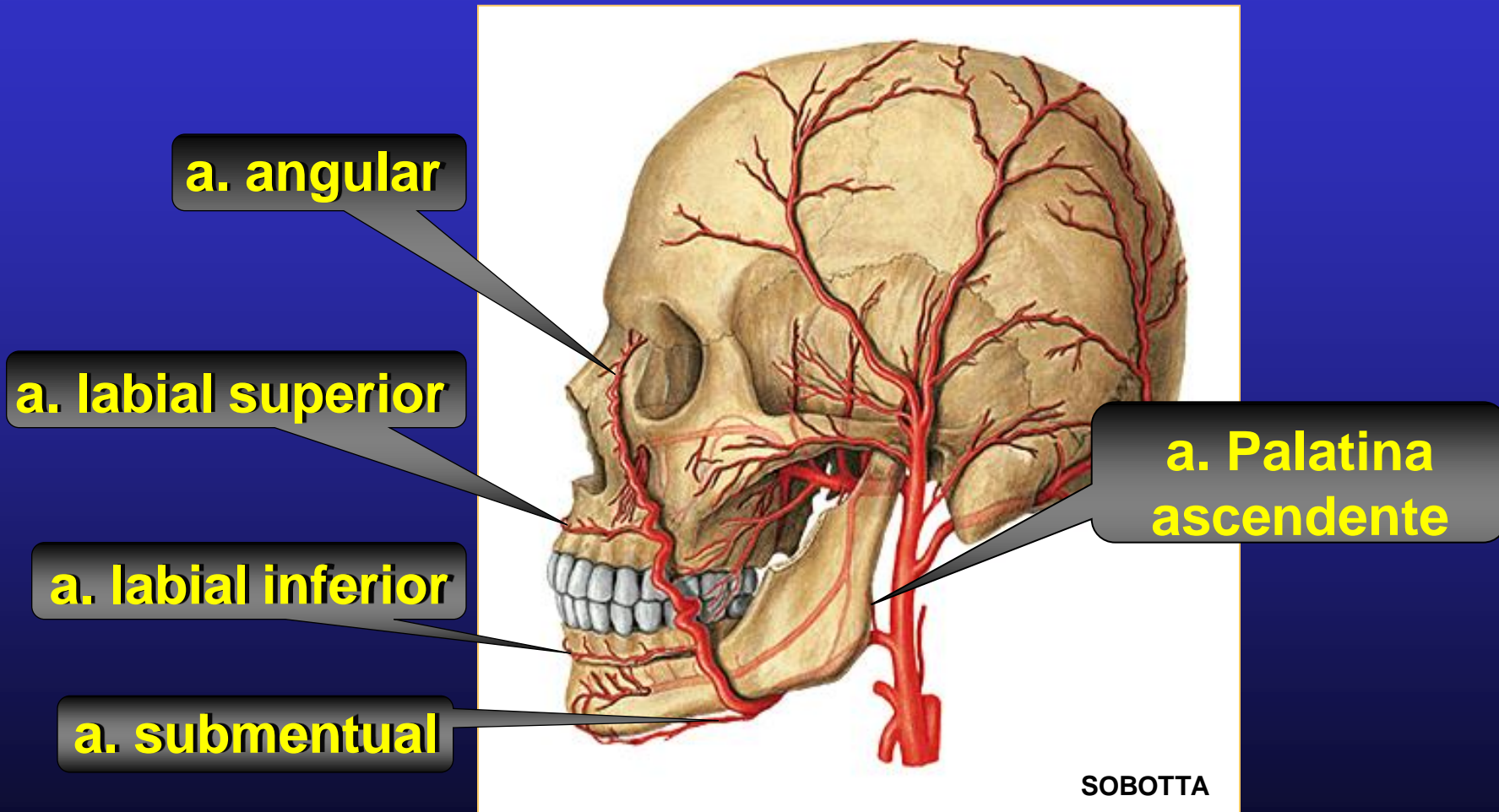


# ARTÉRIA FACIAL



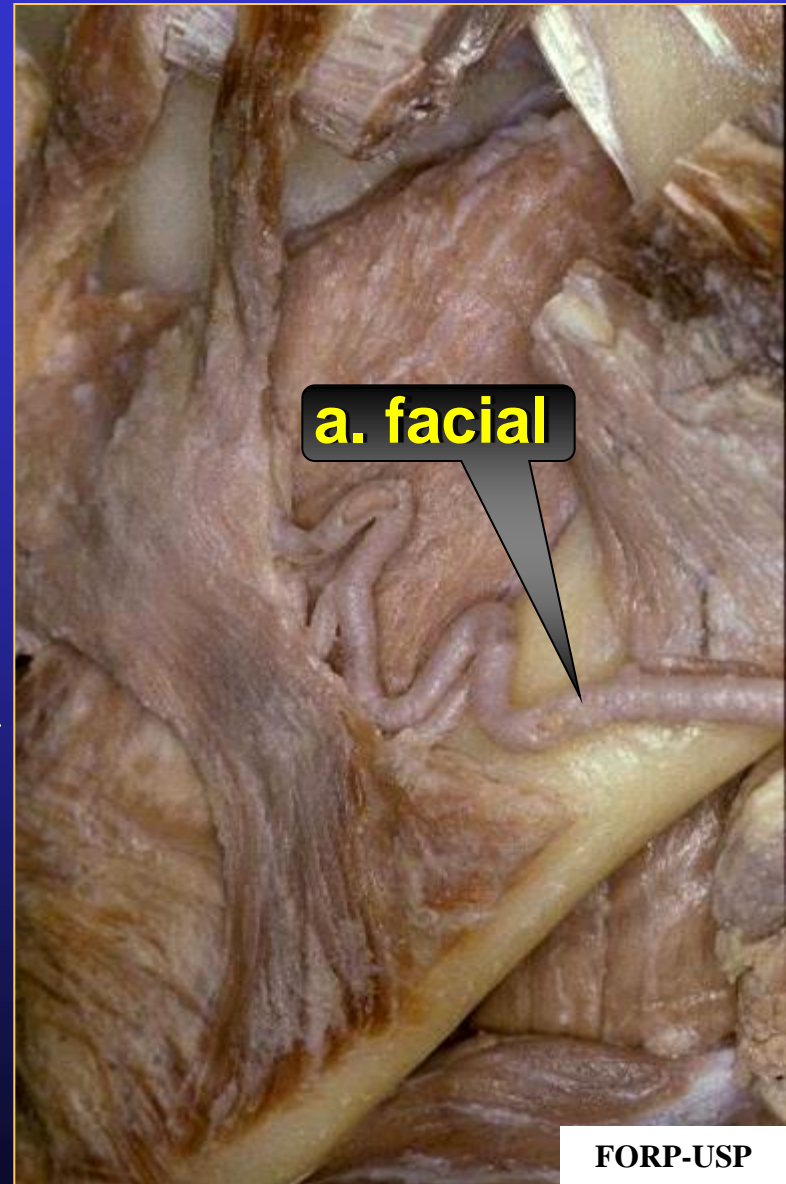
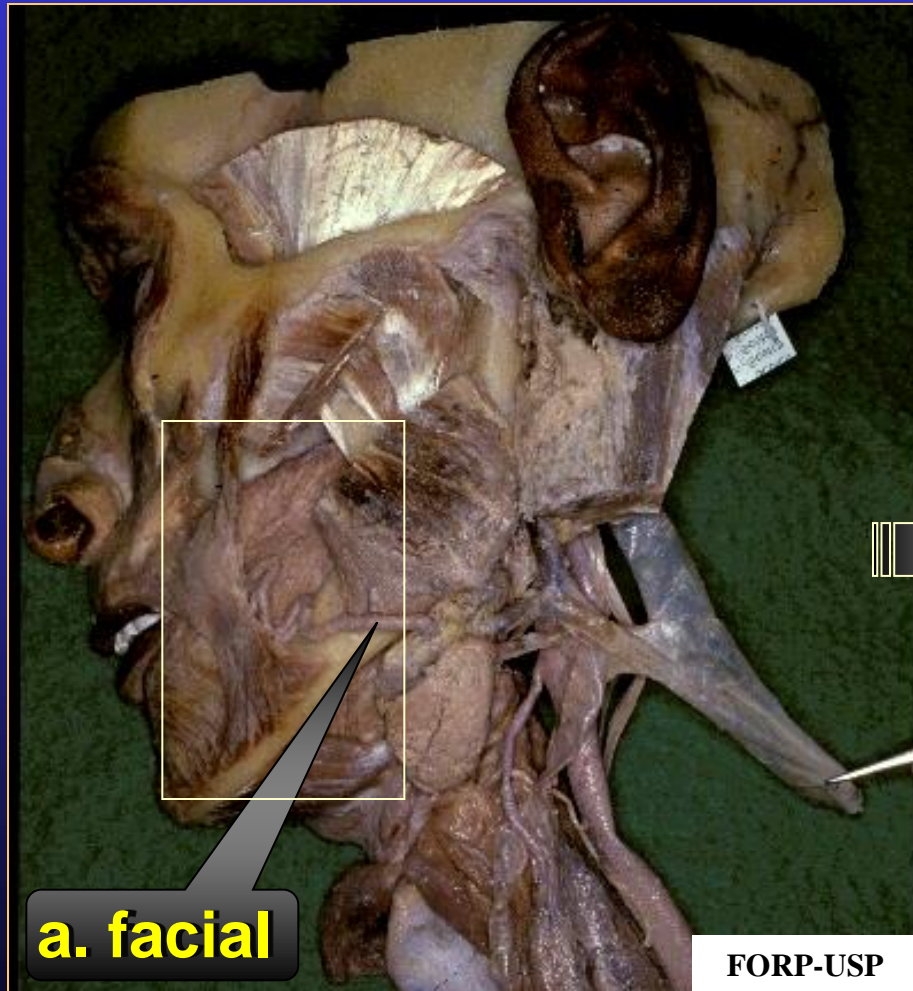
**a. facial**

# Ramos da ARTÉRIA FACIAL

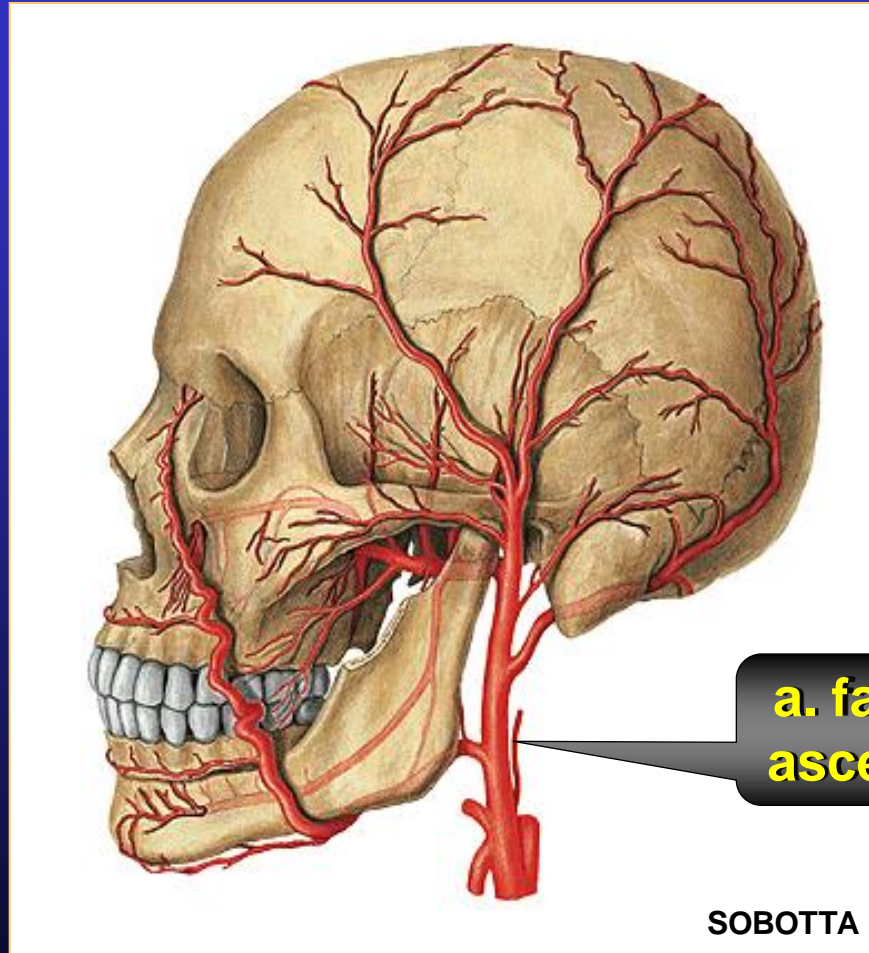




# ARTÉRIA FACIAL



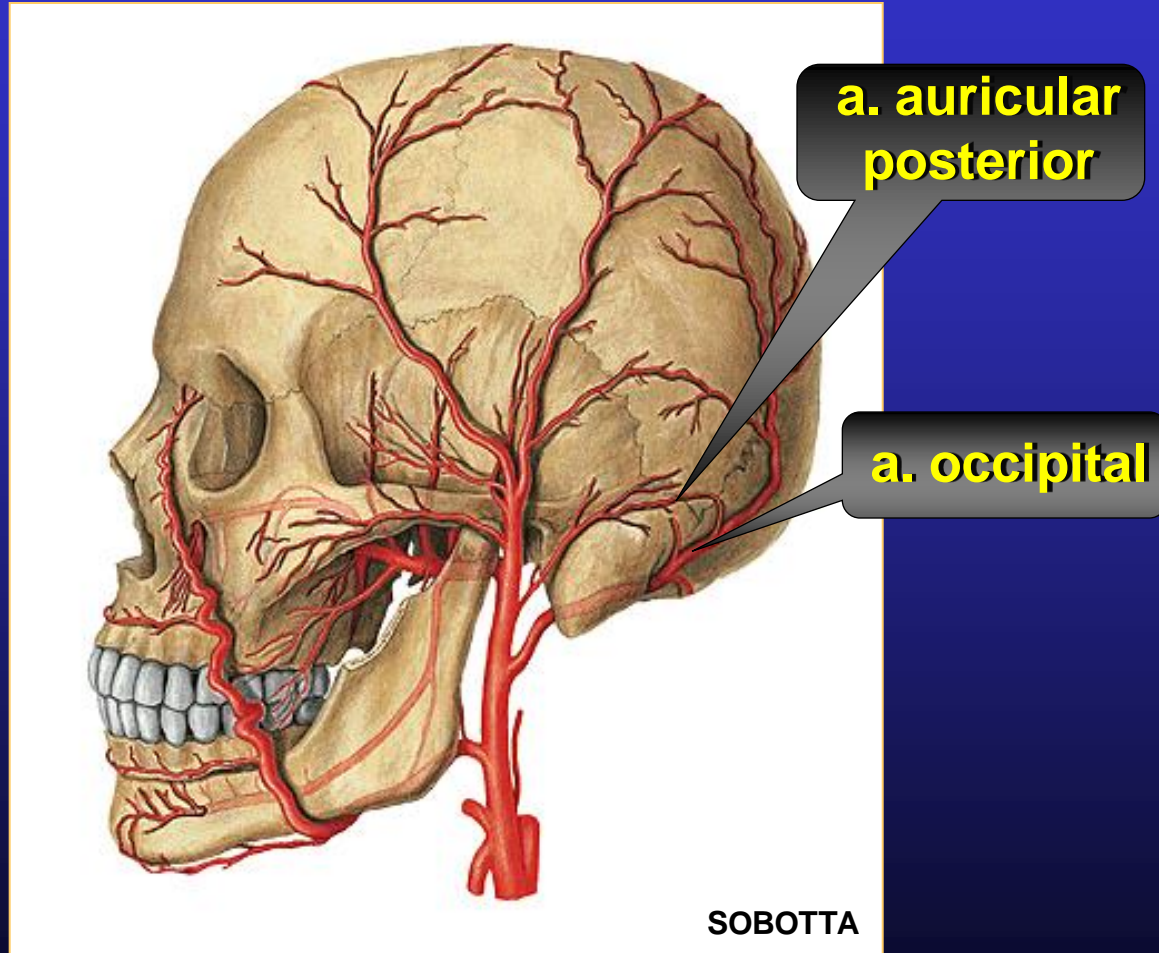
# Ramo intermediário da ARTÉRIA CARÓTIDA EXTERNA



**a. faríngeica  
ascendente**

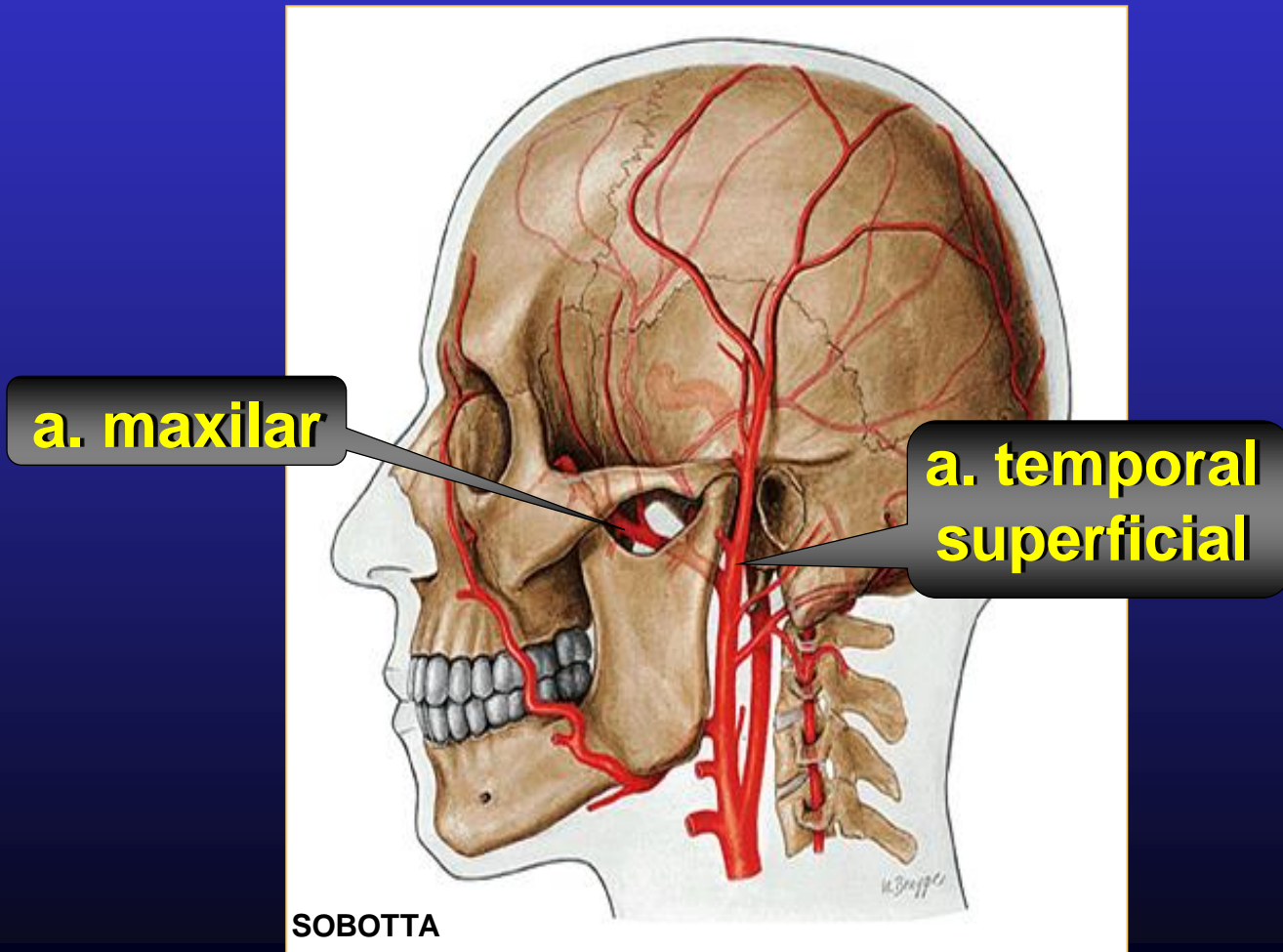
SOBOTTA

# Ramos posteriores da ARTÉRIA CARÓTIDA EXTERNA





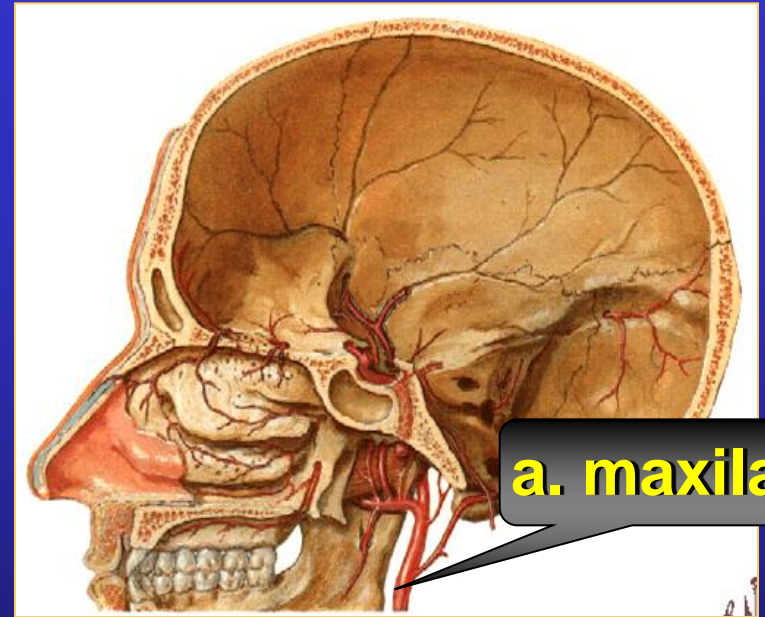
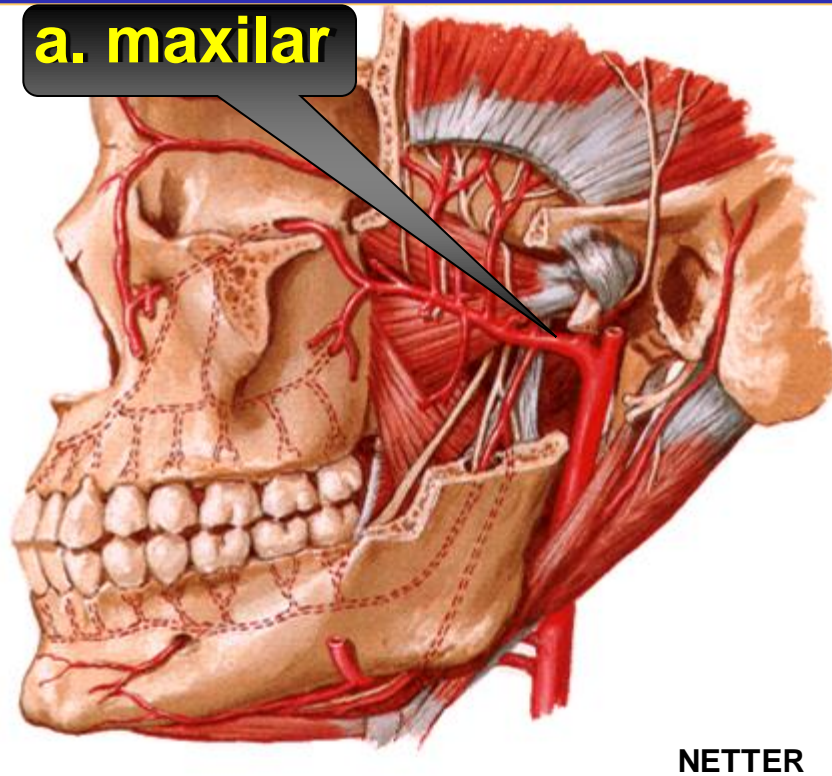
# Ramos terminais da ARTÉRIA CARÓTIDA EXTERNA



# ARTÉRIA MAXILAR

Ramo terminal da  
a. carótida externa

**a. maxilar**

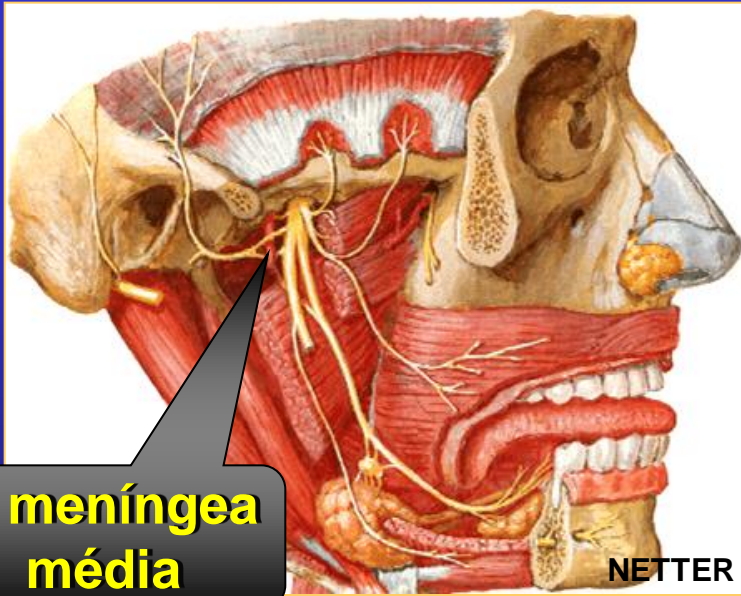


**DESTINO:**

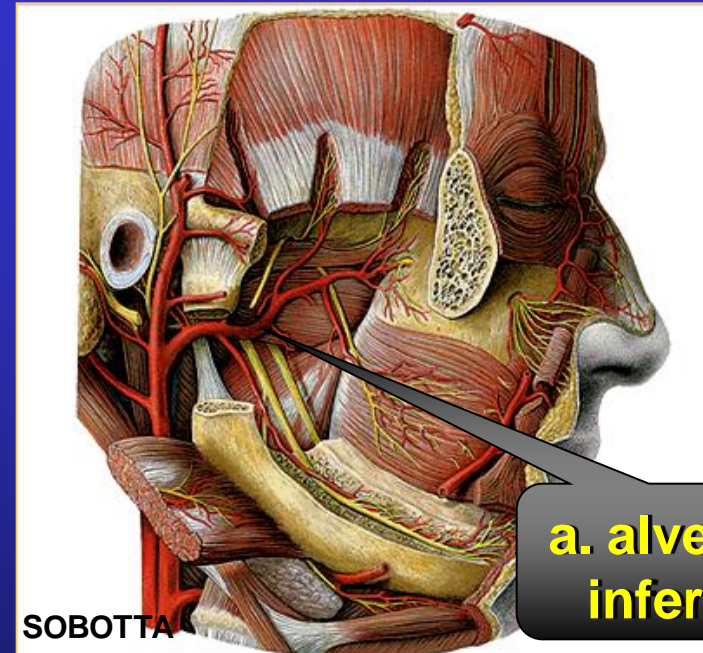
- ✓ regiões profundas da face
- ✓ dentes superiores
- ✓ dentes inferiores



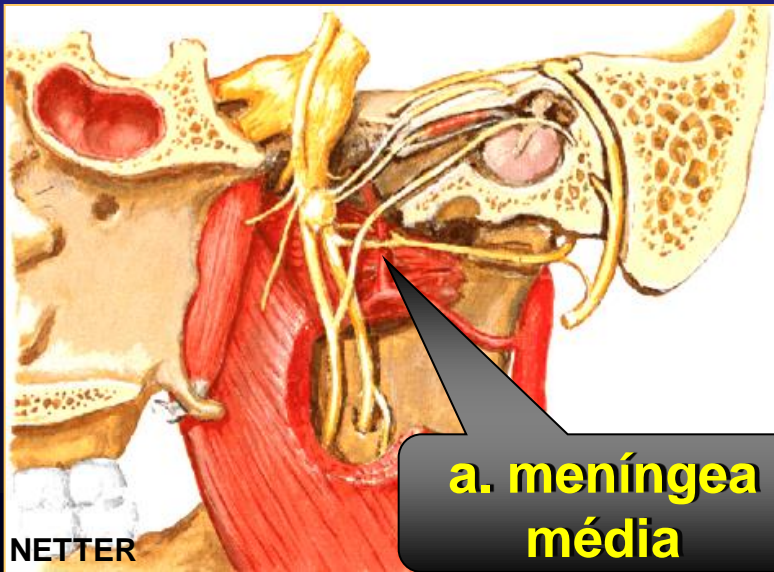
# Ramos da primeira porção da ARTÉRIA MAXILAR



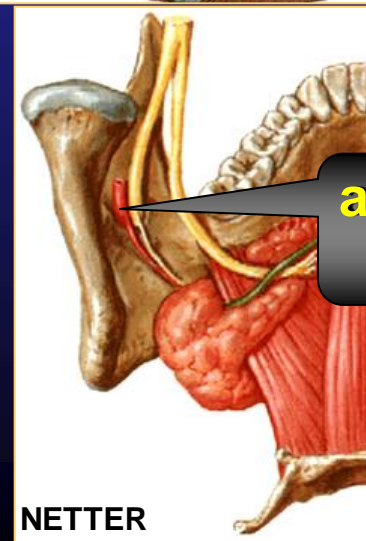
**a. meníngea  
média**



**a. alveolar  
inferior**



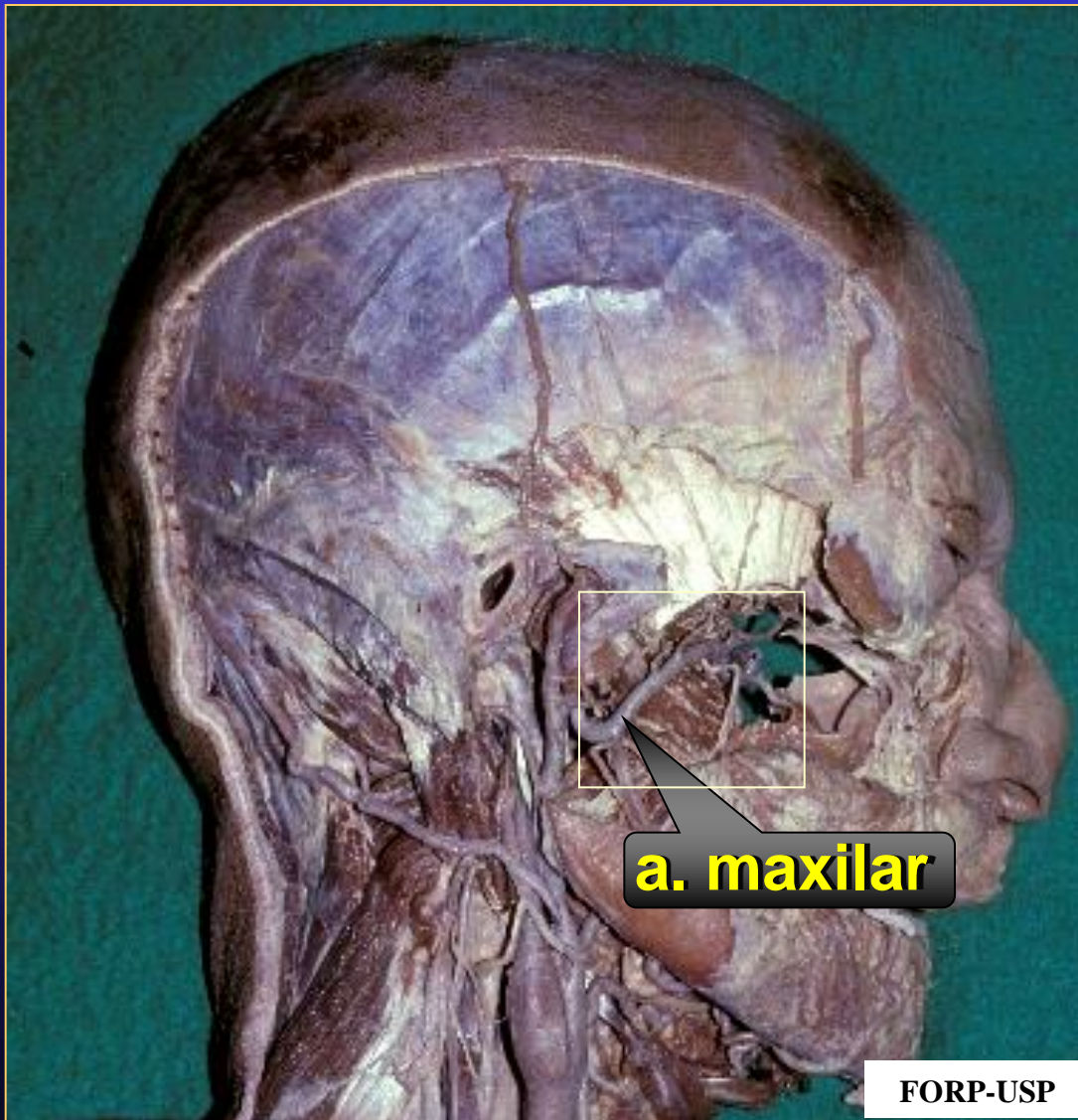
**a. meníngea  
média**



**a. alveolar  
inferior**



# ARTÉRIA MAXILAR



# Ramos da segunda porção da ARTÉRIA MAXILAR

**a. temporal profunda posterior**

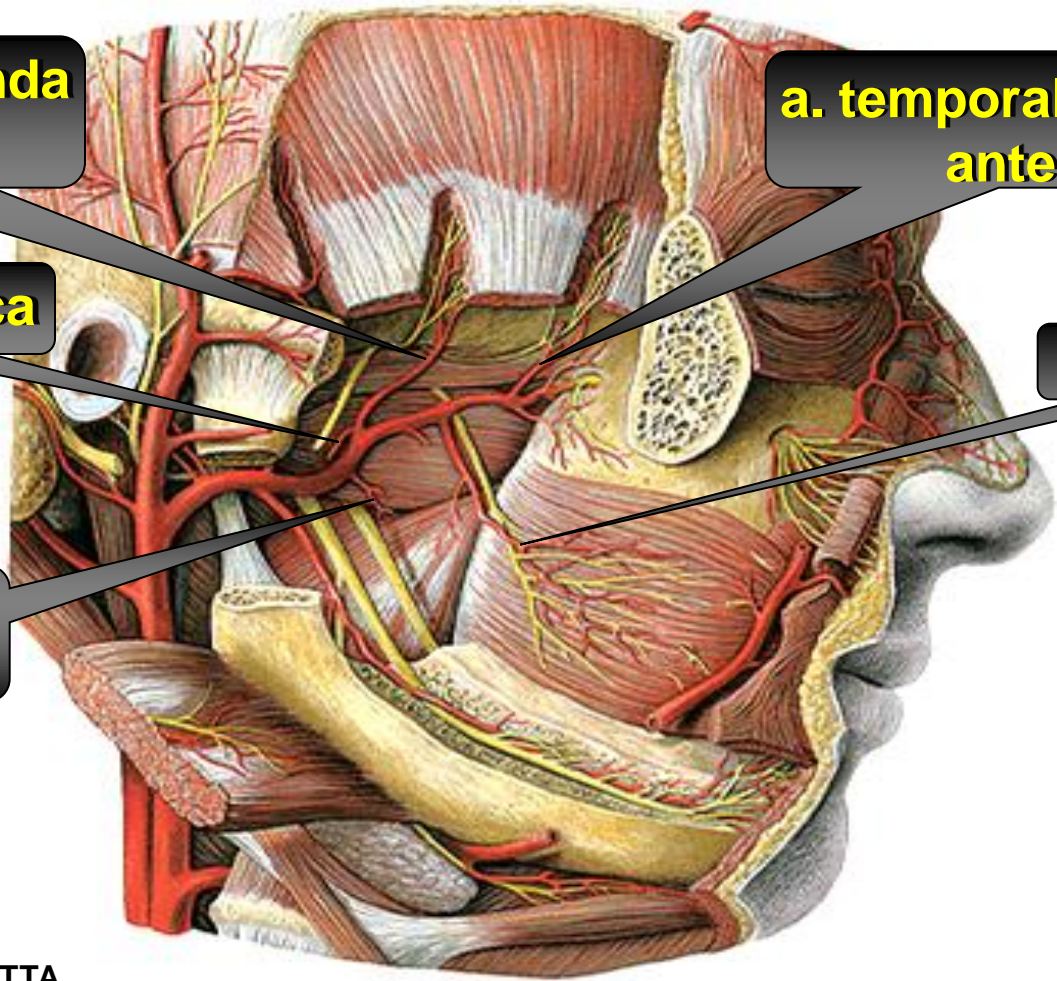
**a. temporal profunda anterior**

**a. massetérica**

**a. bucal**

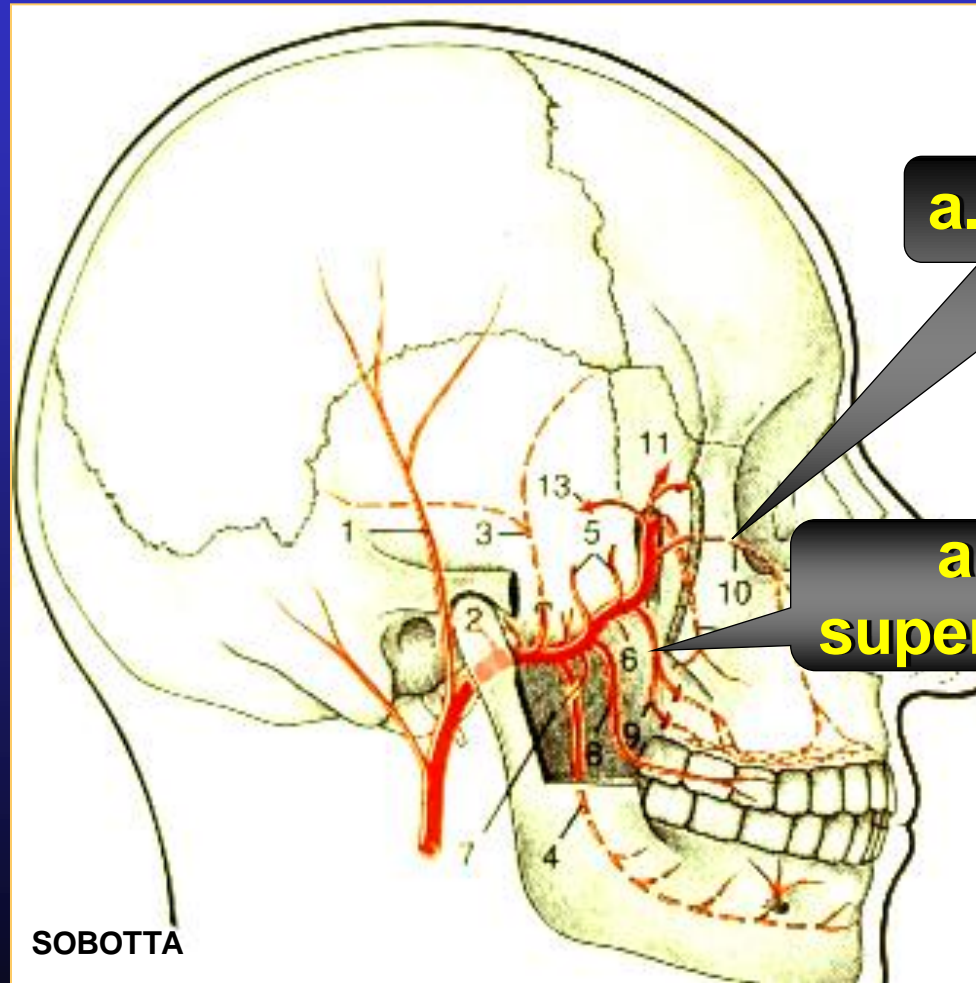
**ramos pterigóideos**

SOBOTTA





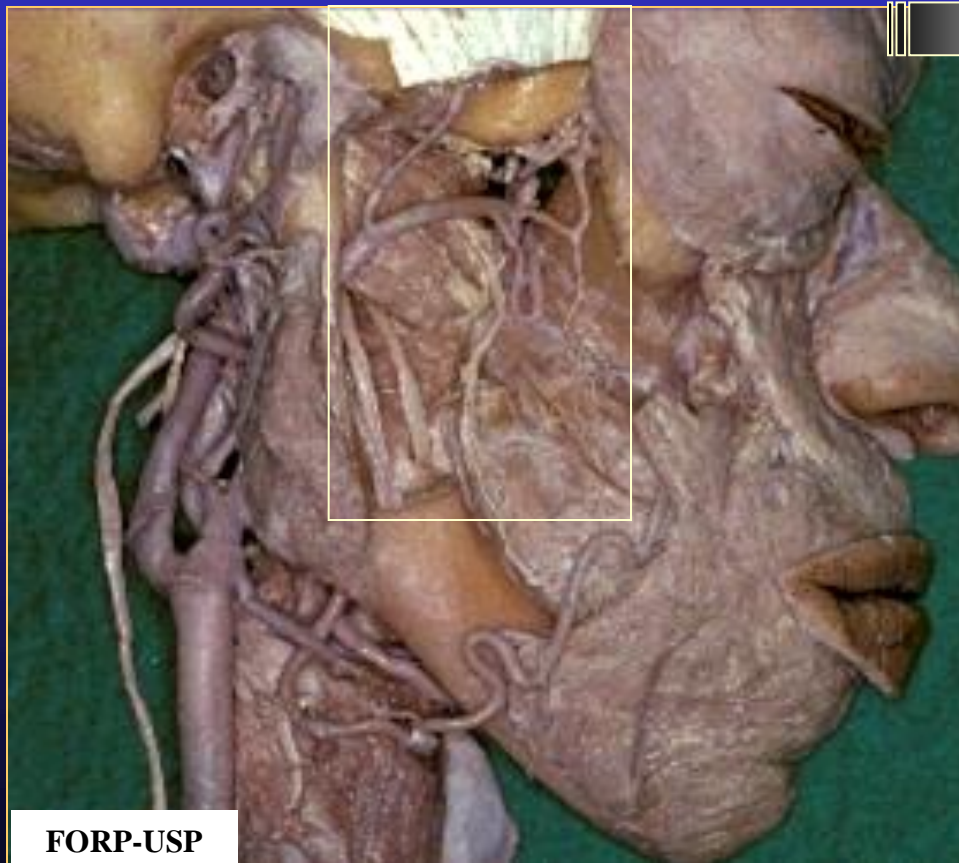
# Ramos da terceira porção da **ARTÉRIA MAXILAR**



**a. infraorbital**

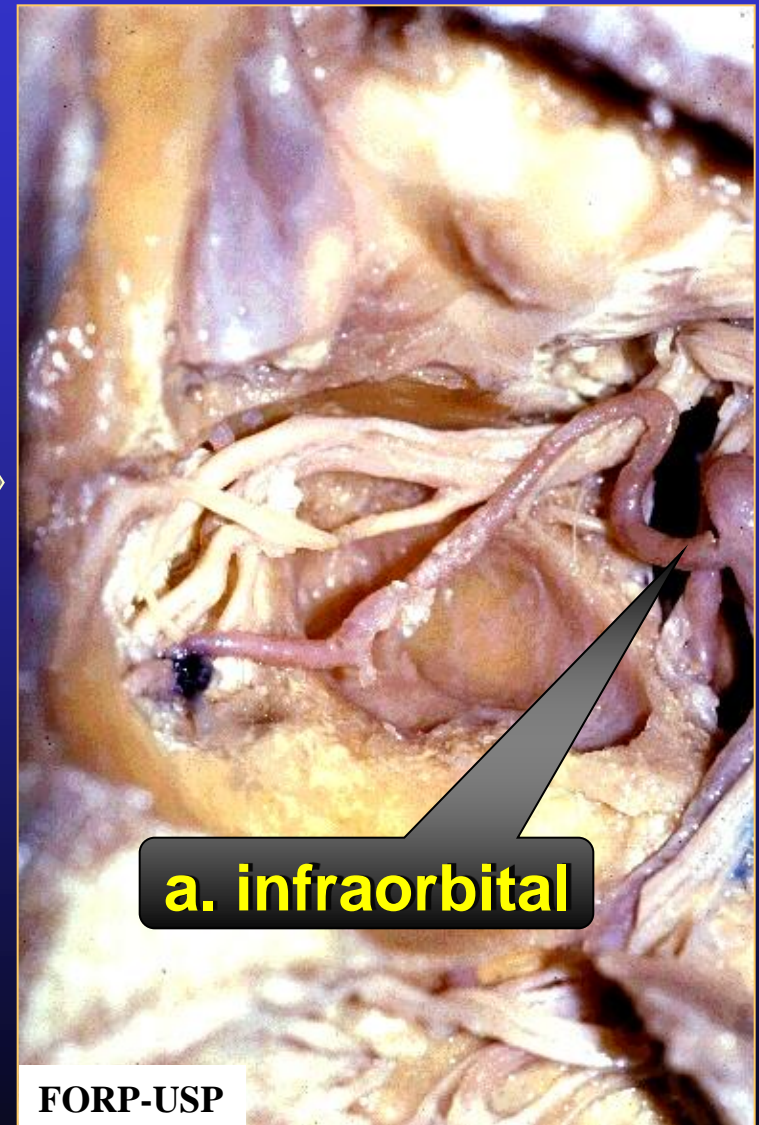
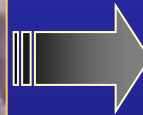
**a. alveolar superior posterior**

# Ramos da terceira porção da ARTÉRIA MAXILAR

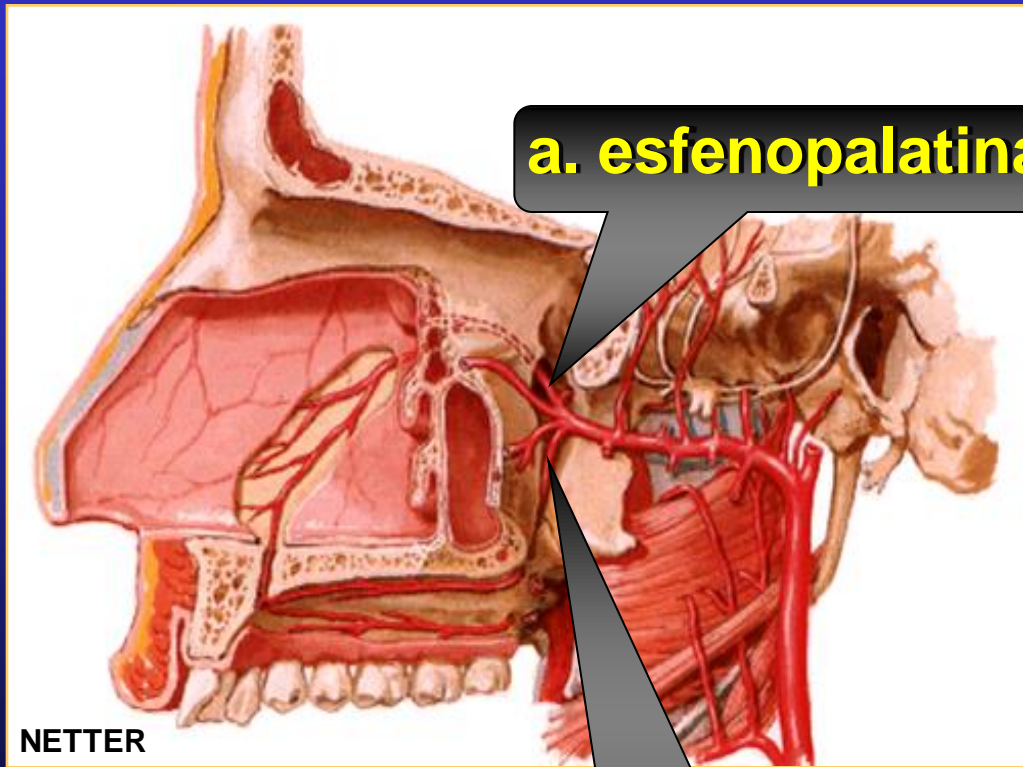




# Vista medial da **ARTÉRIA INFRAORBITAL**

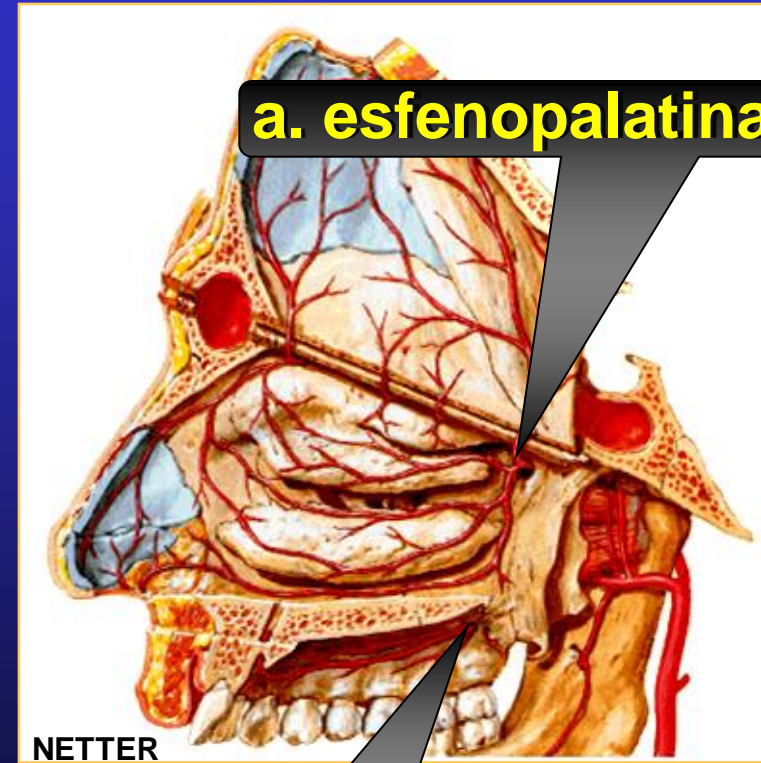


# Ramos da quarta porção da ARTÉRIA MAXILAR



**a. esfenopalatina**

**a. palatina  
descendente**

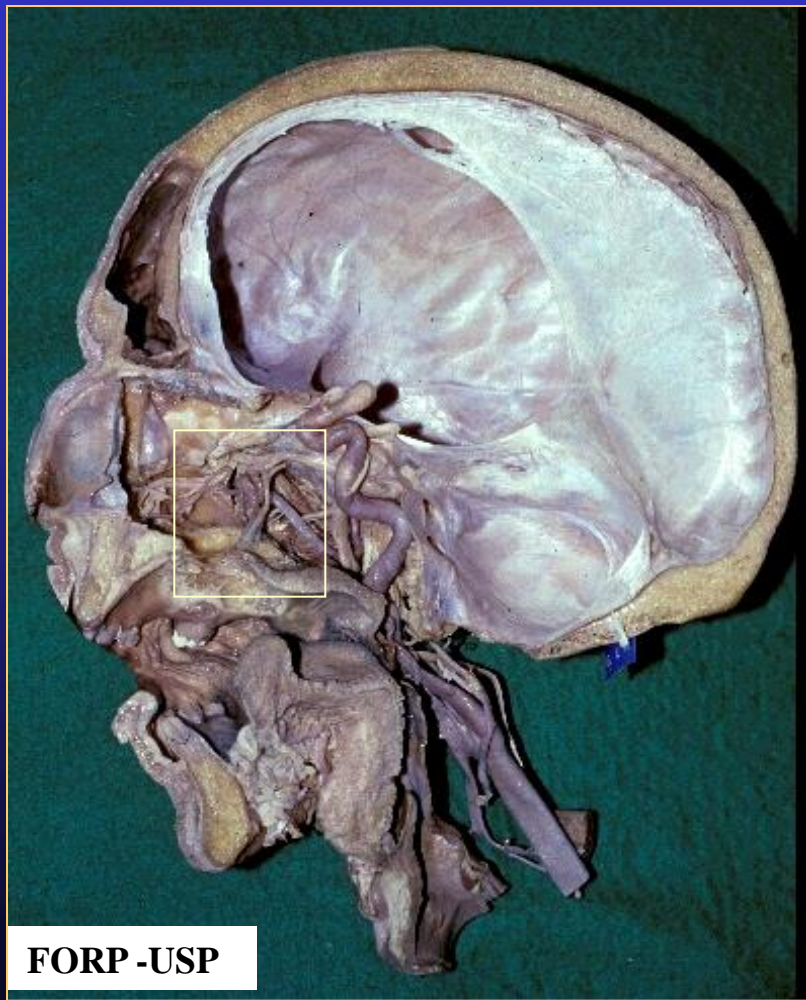


**a. esfenopalatina**

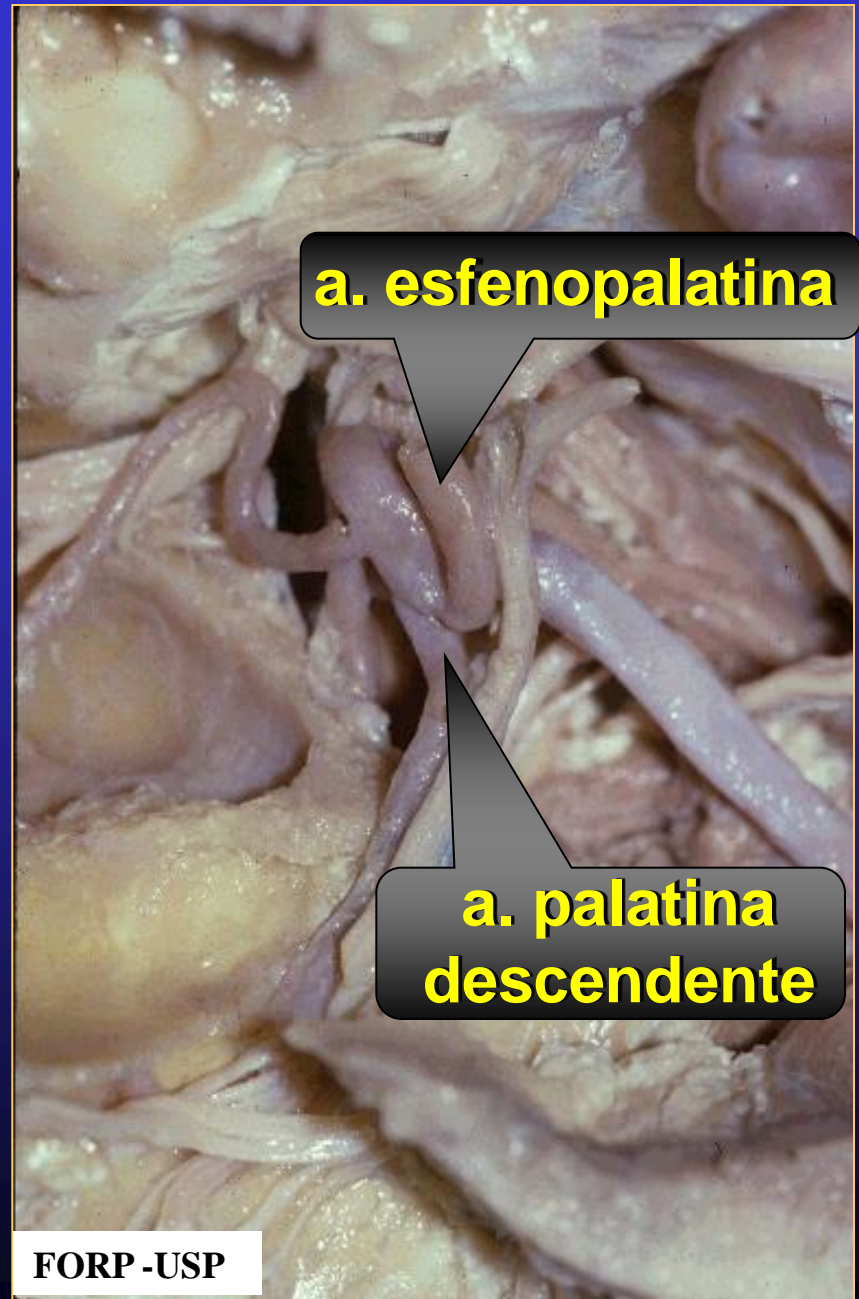
**a. palatina  
maior**



# Ramos da quarta porção ARTÉRIA MAXILAR



FORP -USP



FORP -USP

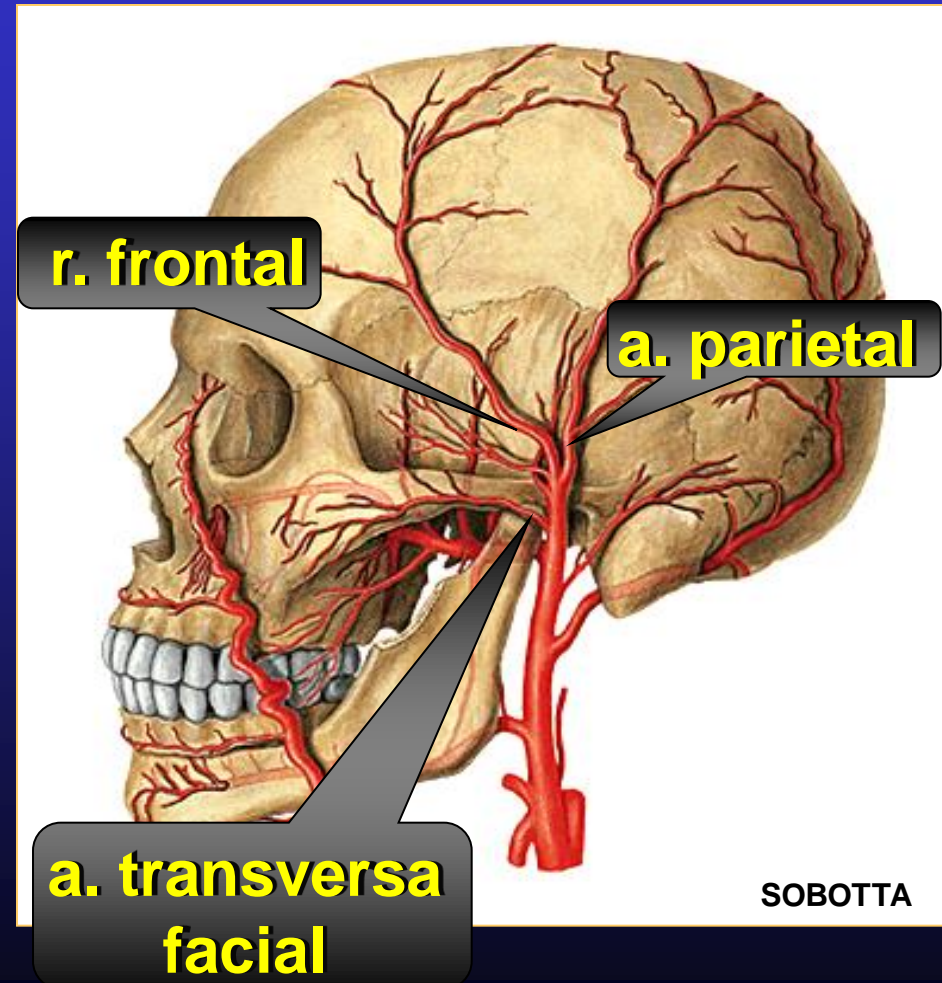
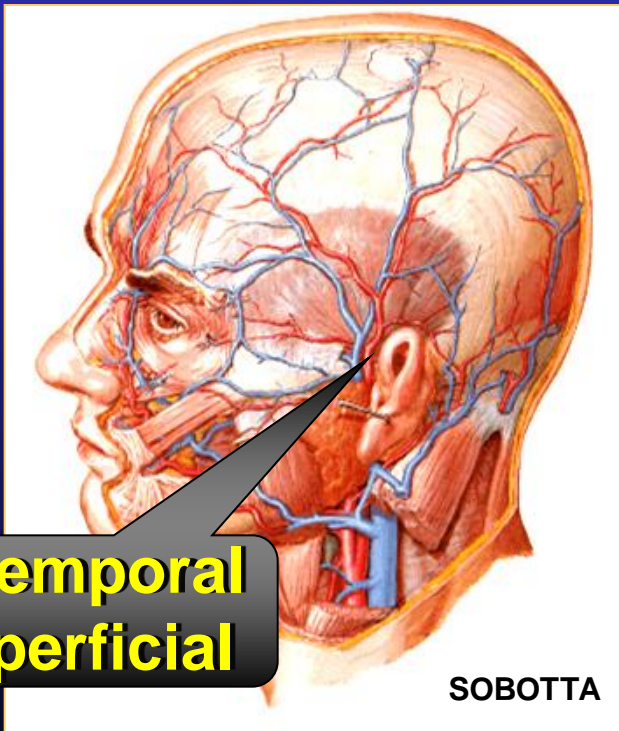


# a. palatina descendente



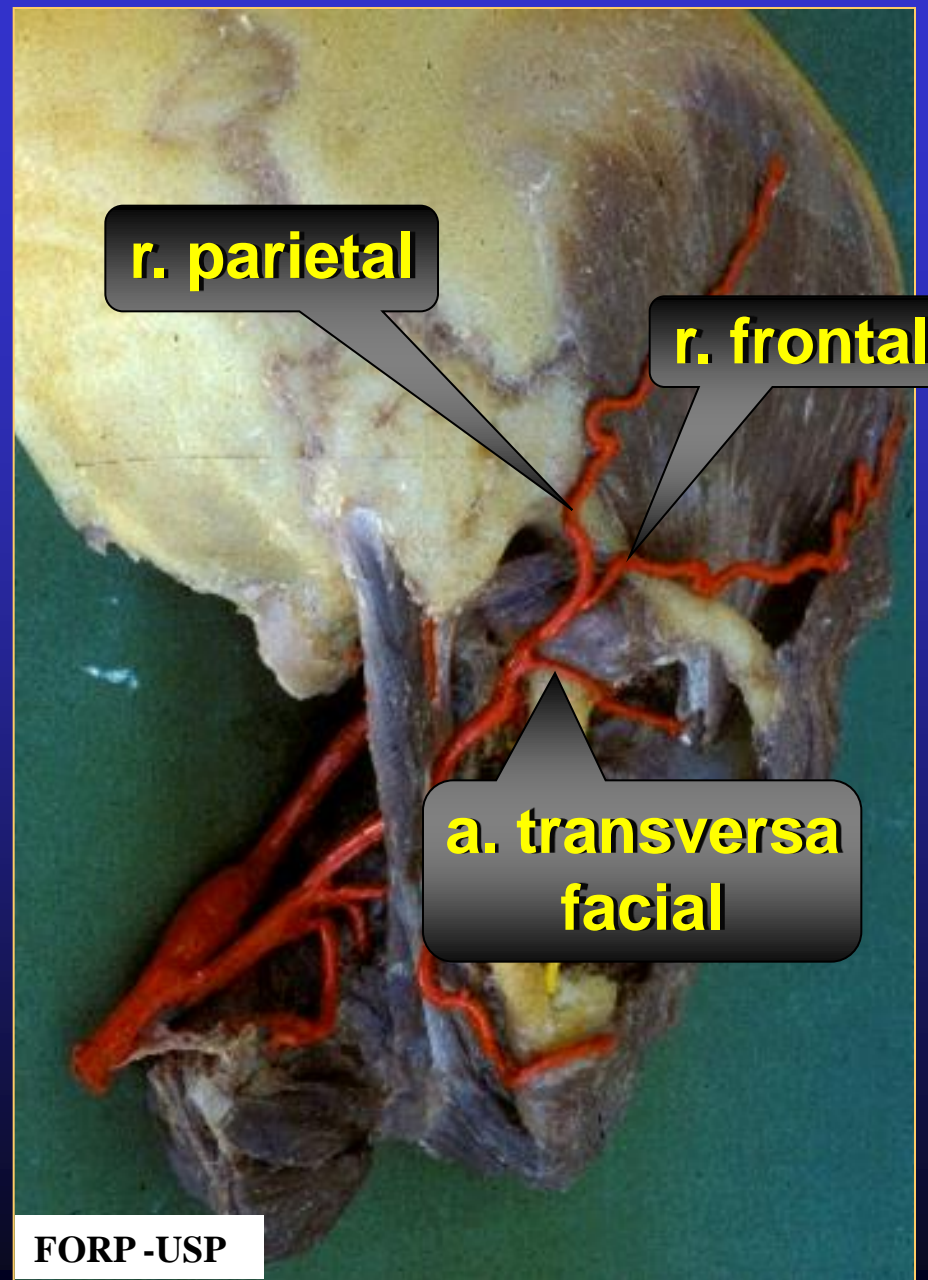
# ARTÉRIA TEMPORAL SUPERFICIAL

Ramo terminal da  
a. carótida externa



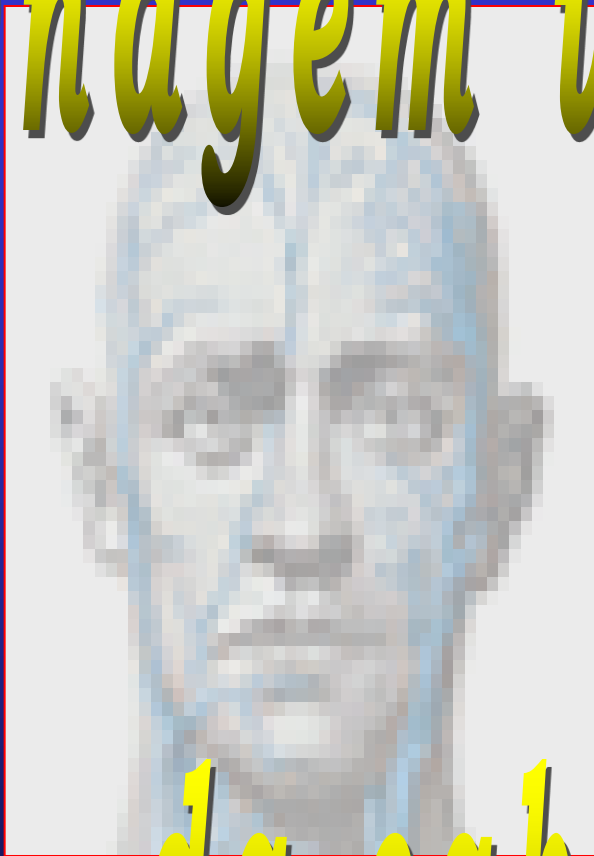


**Ramos da  
ARTÉRIA  
TEMPORAL  
SUPERFICIAL**



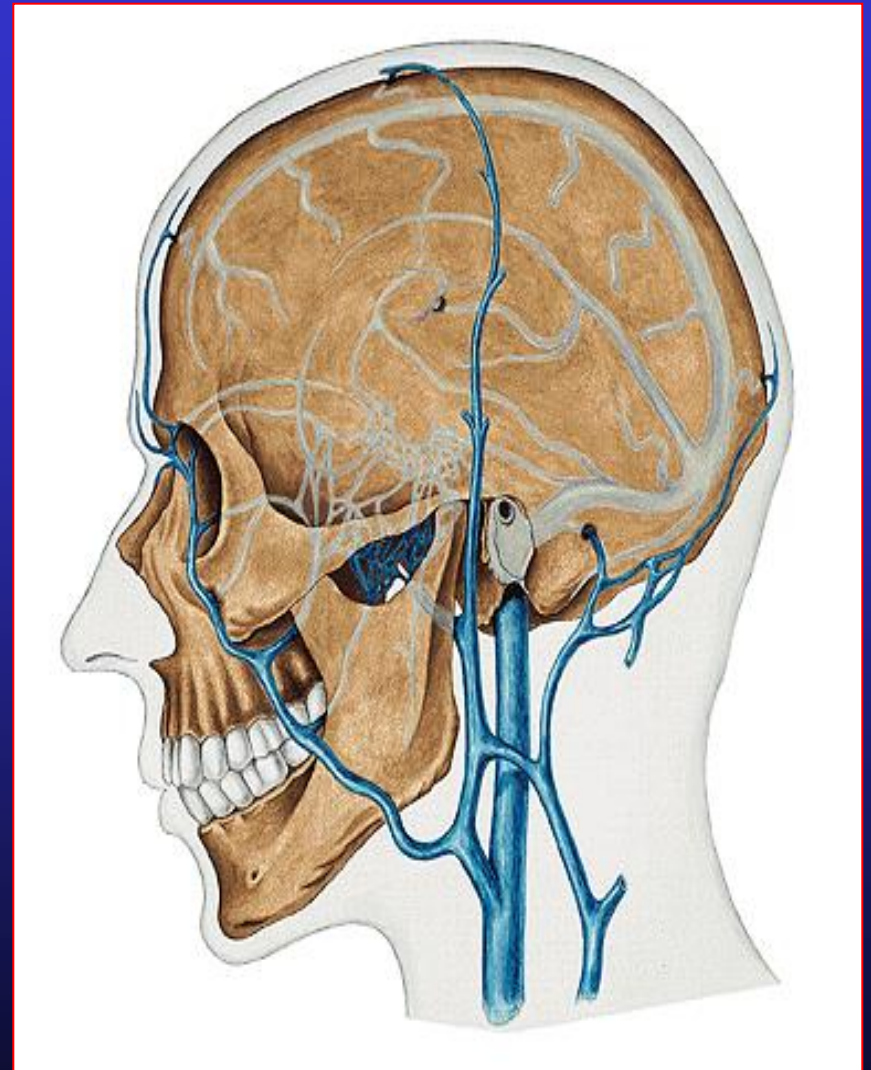


# Drenagem venosa

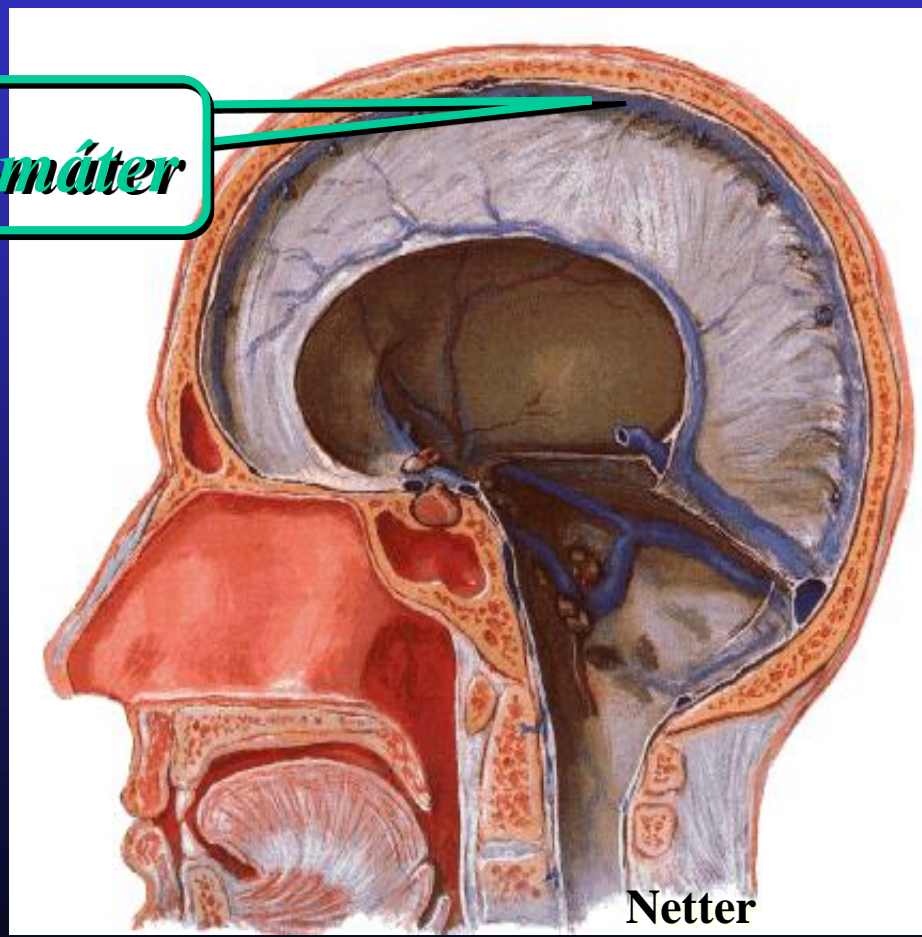
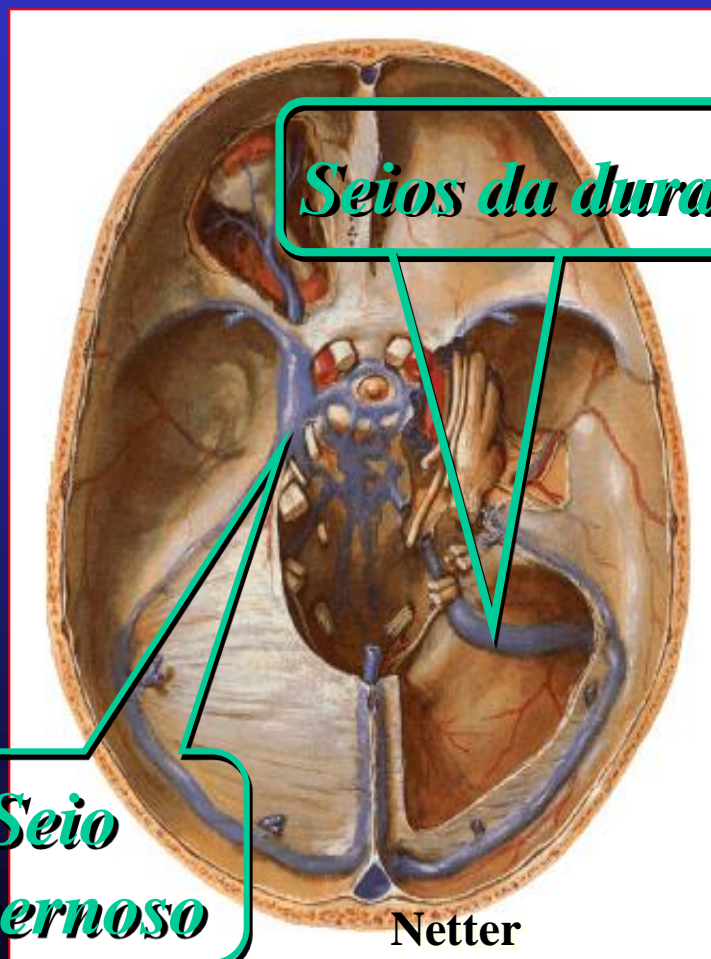


# da cabeça e pescoço

*O sangue conduzido  
pelas artérias à  
cabeça e ao pescoço  
retornam através de  
diferentes tipos de  
vasos.*



Entre os dois folhetos da dura-máter estão os seios venosos que se reúnem para formar a v. jugular interna



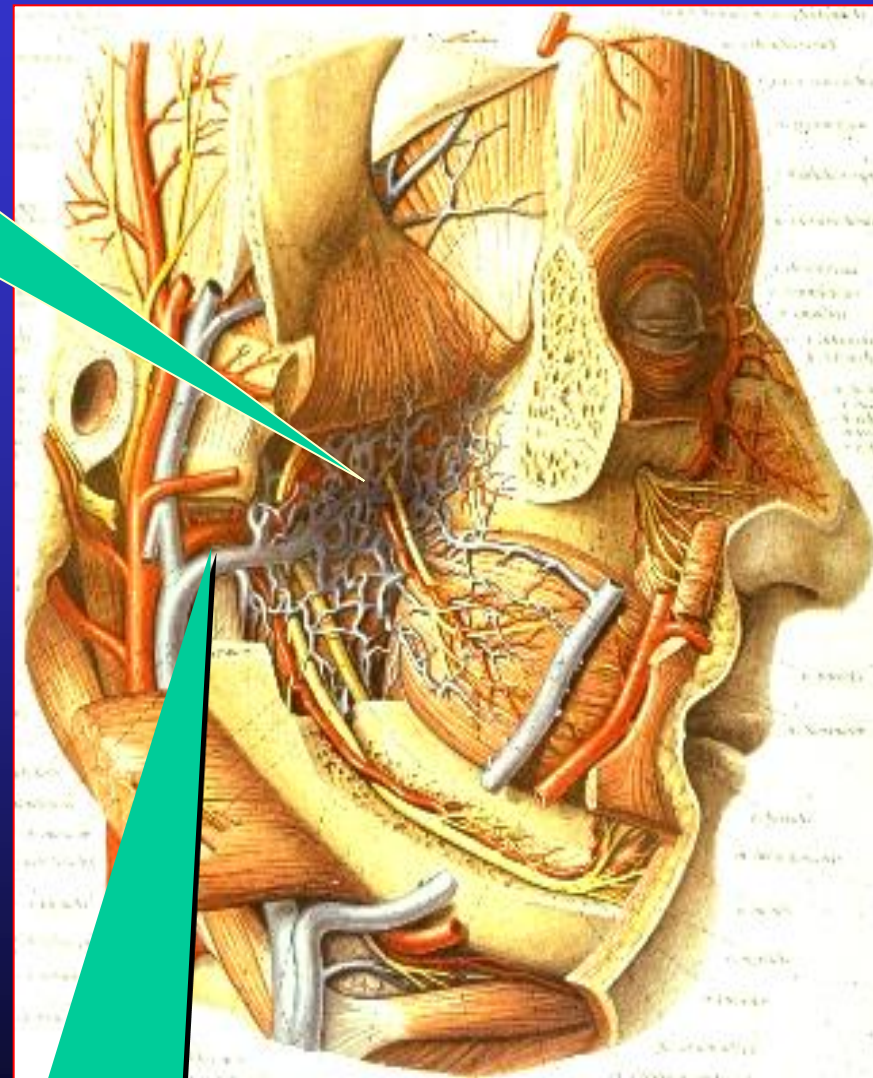
*Seios da dura-máter*



## *Plexo pterigóideo*

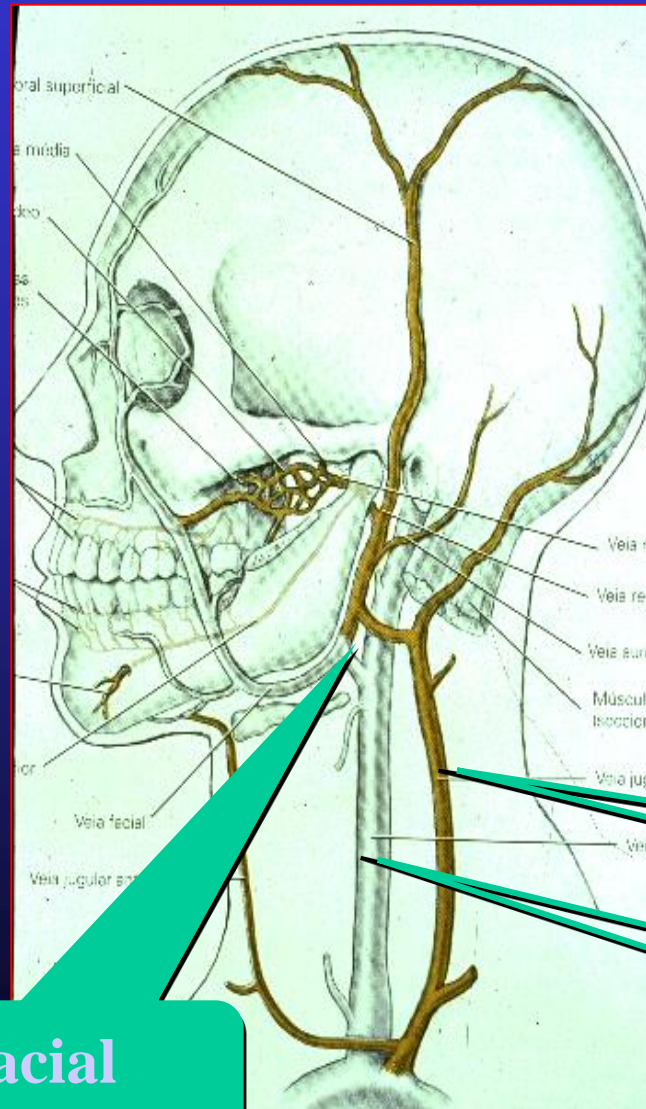
Formado por veias que trazem o sangue de:

- músculos da mastigação
- cavidade nasal e do palato
- dentes e seus tecidos de suporte



**Drenam para a**  
*Veia maxilar*

*As vv. retromandibular e facial drenam  
para a v. facial comum*



**veia facial  
comum**

**Veia jugular externa**

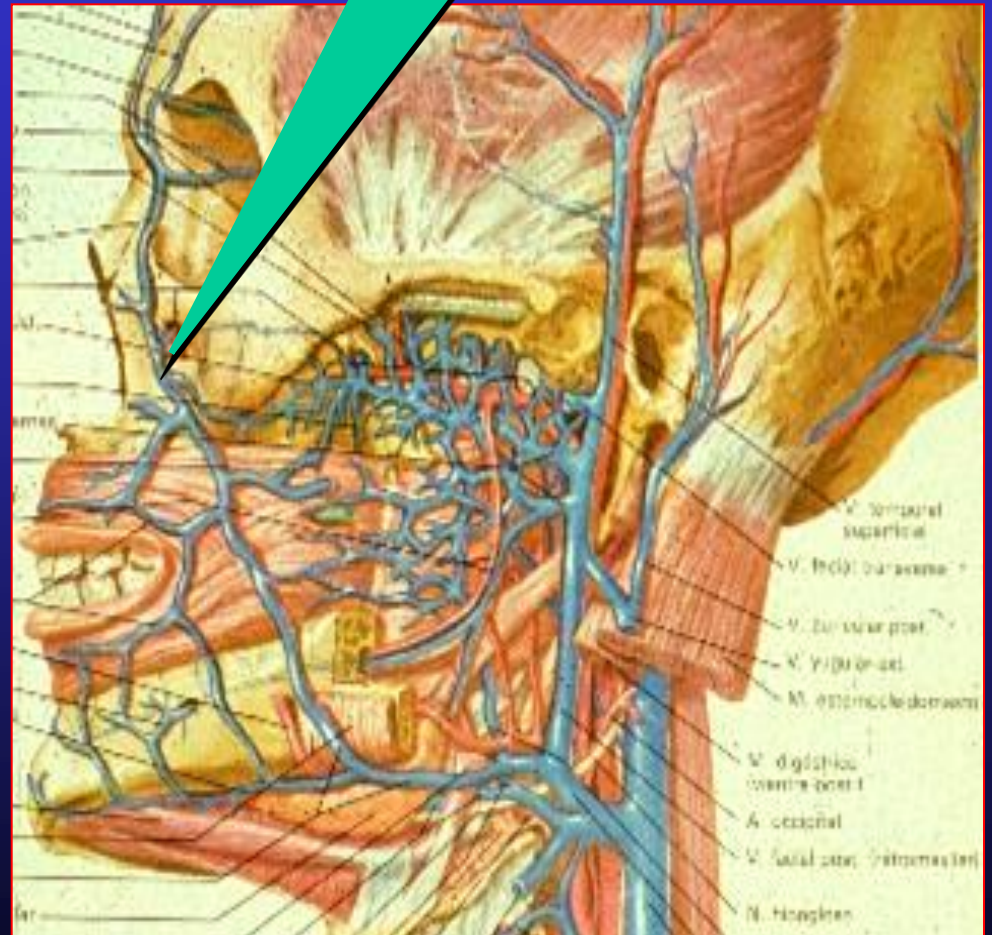
**Veia jugular interna**

## *Veia Facial*

• **As tributárias da *v. facial***

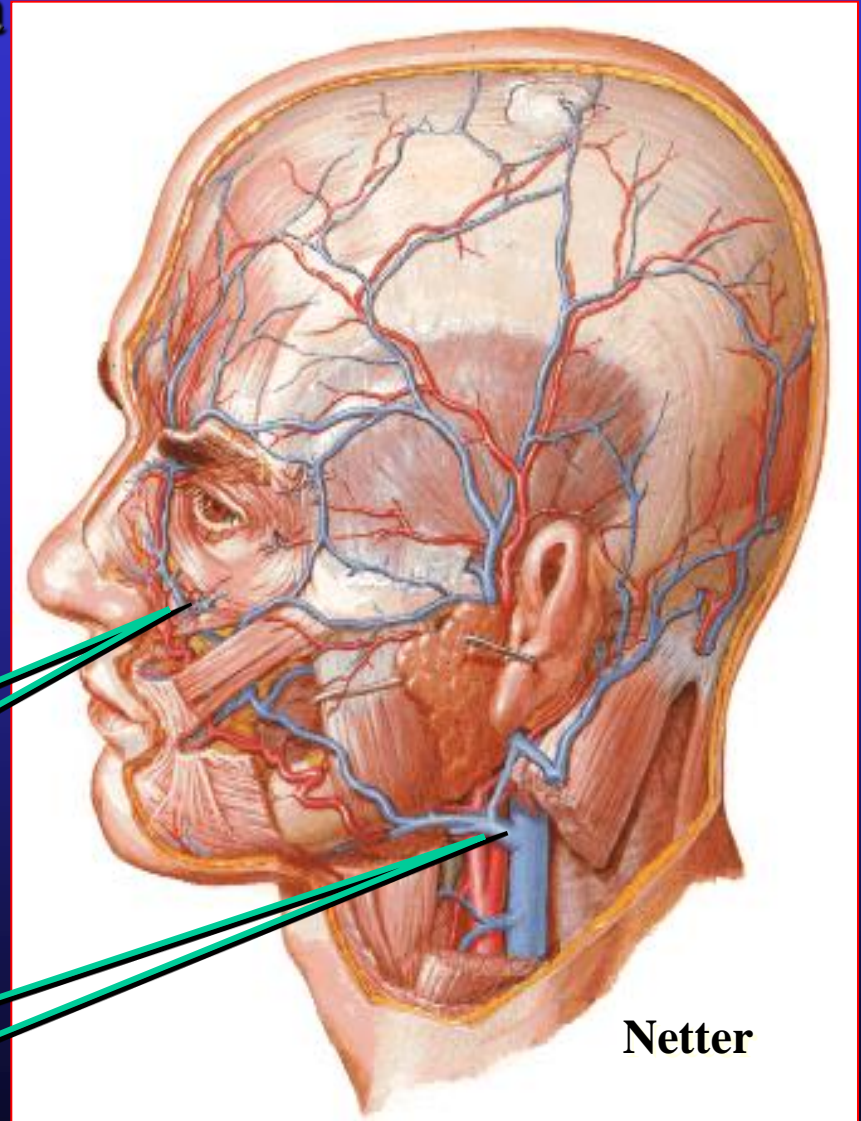
**são:**

- *veias nasal externa*
- *labial superior*
- *labial inferior*
- *submentoniana*
- *palatina externa*
- *profunda da face*





O sangue da *v. Facial* drena  
para a *v. facial comum*



*v. facial*

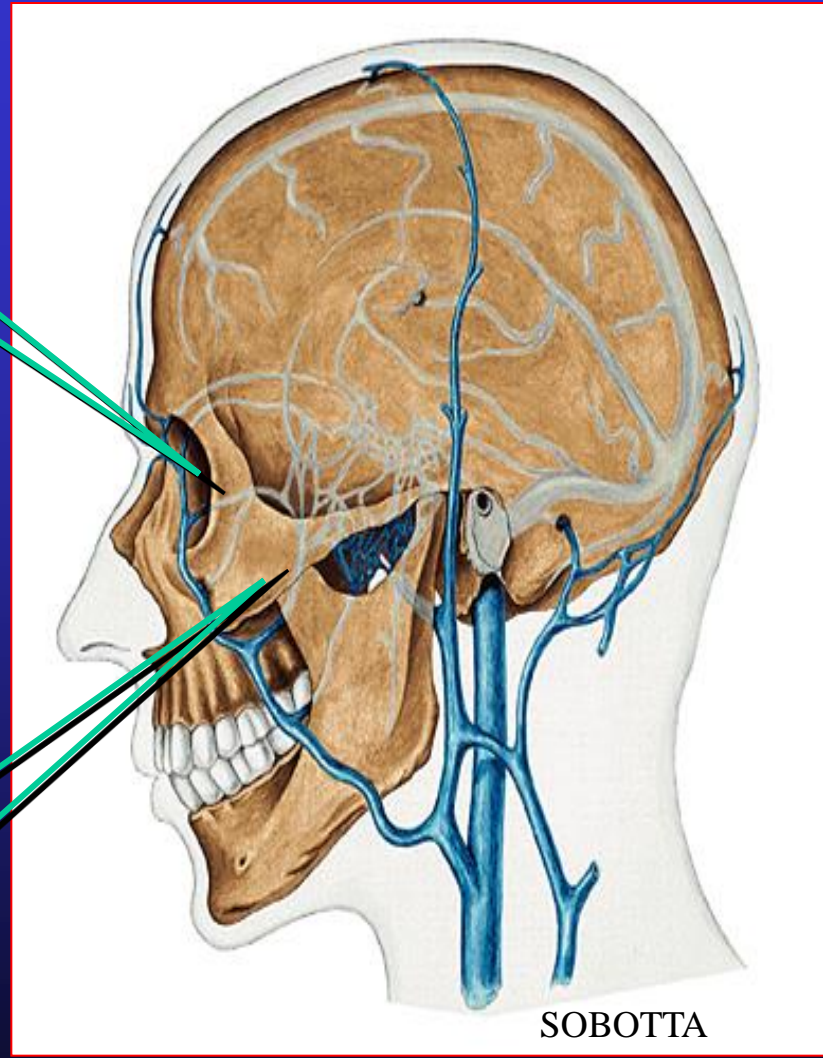
*v. facial comum*

Netter

## **Veias emissárias**

- **Não têm válvulas**
- **Estabelecem anastomoses entre os seios da dura-máter e as veias extracranianas.**

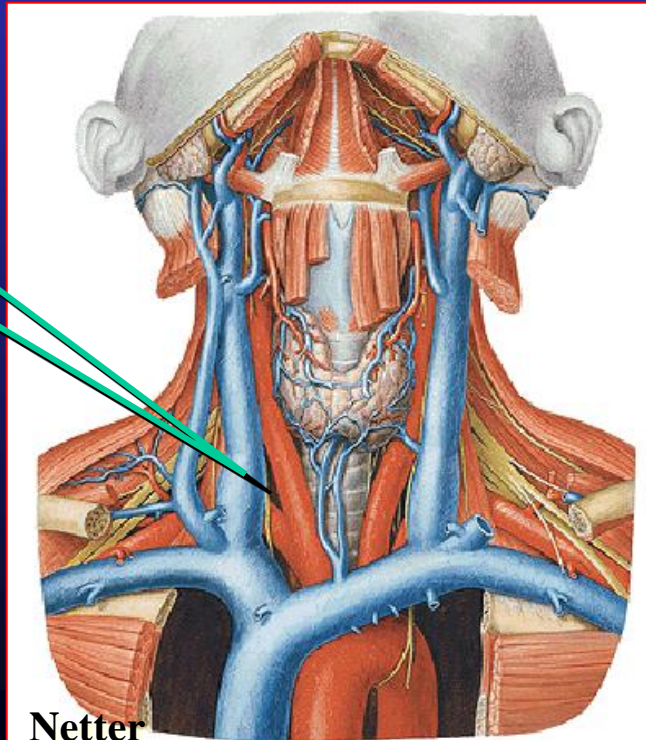
## **Veias emissárias**



## *v. Jugular Interna*

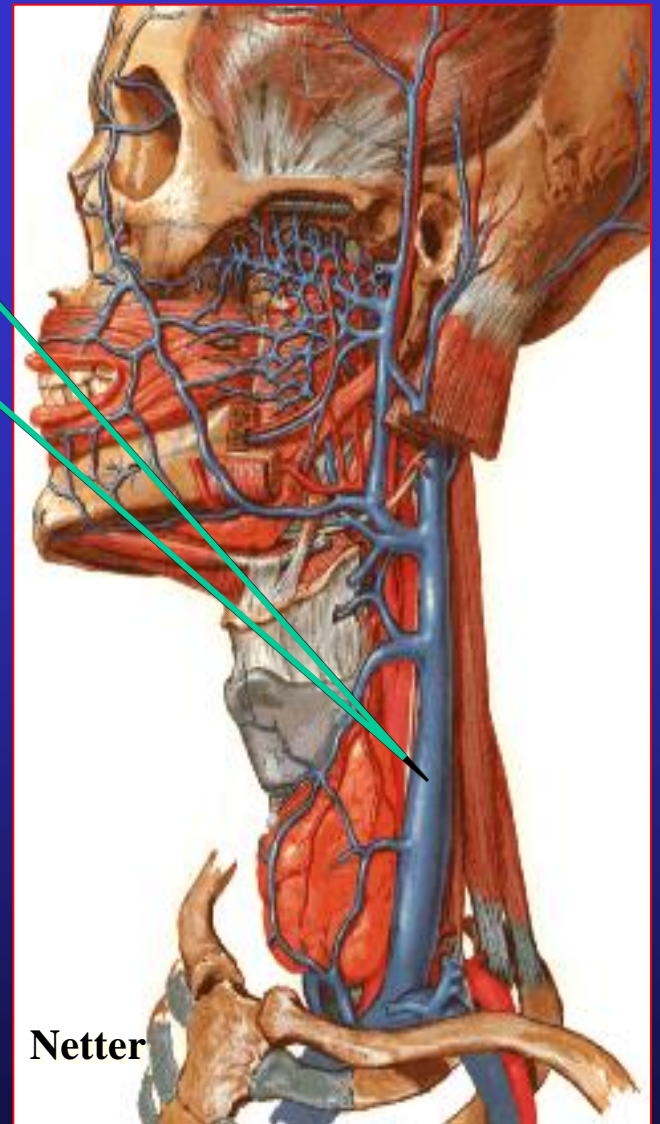
- inicia-se no forame jugular
- Sob o m. esternocleidomastóideo
- termina atrás da clavícula ao se unir com a veia subclávia.

## *v. jugular interna*



Netter

SOBOTA 2000



Netter