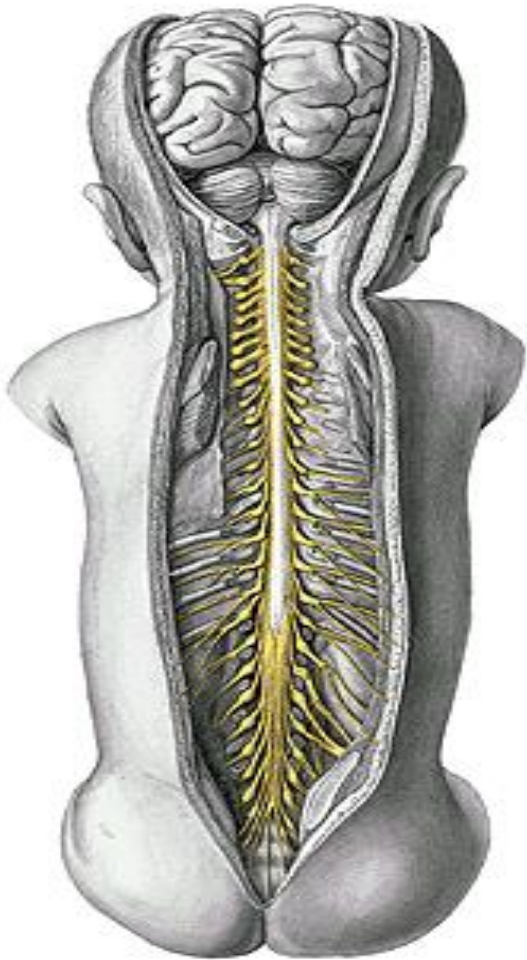


UNIVERSIDADE DE SÃO PAULO
FACULDADE DE ODONTOLOGIA DE RIBEIRÃO PRETO
DEPARTAMENTO DE BIOLOGIA BÁSICA E ORAL

SISTEMA NERVOSO



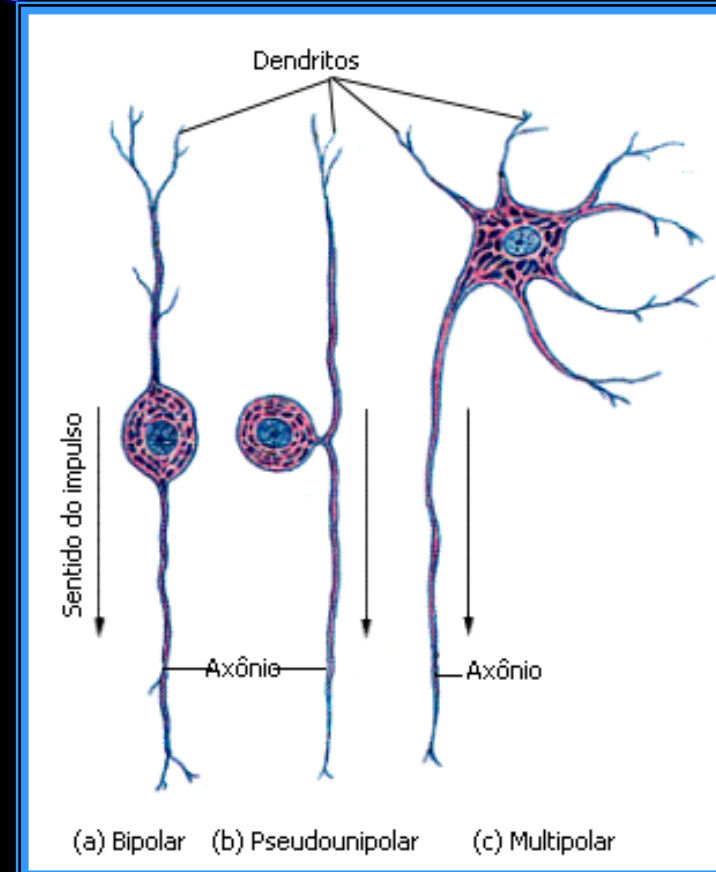
Sistema Nervoso



- Capta alterações no meio externo e interno, interpreta-as e responde-as
- Composto por órgãos: encéfalo, medula espinal e nervos

Neurônio - Classificação Morfofuncional

- Neurônio sensitivo ou aferente
- Neurônio motor ou eferente
- Neurônio de associação



Organização do Sistema Nervoso

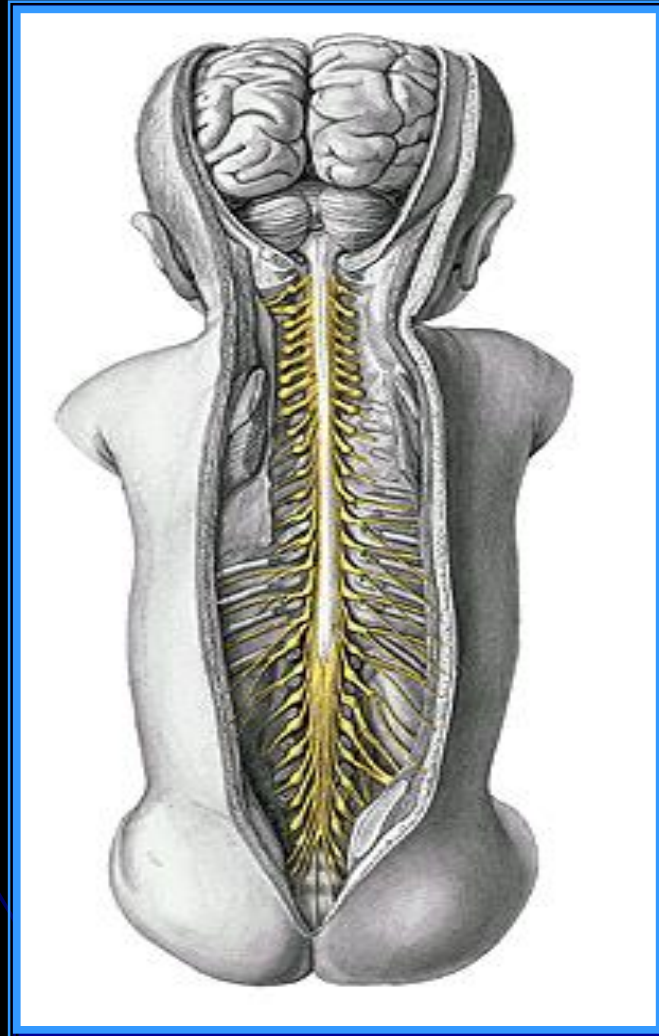
Critério Anatômico:

- Sistema nervoso central
- Sistema nervoso periférico

Critério Funcional:

- Sistema nervoso somático
- Sistema nervoso visceral

Sistema Nervoso Central



Sistema Nervoso Central

Medula espinal

31 segmentos

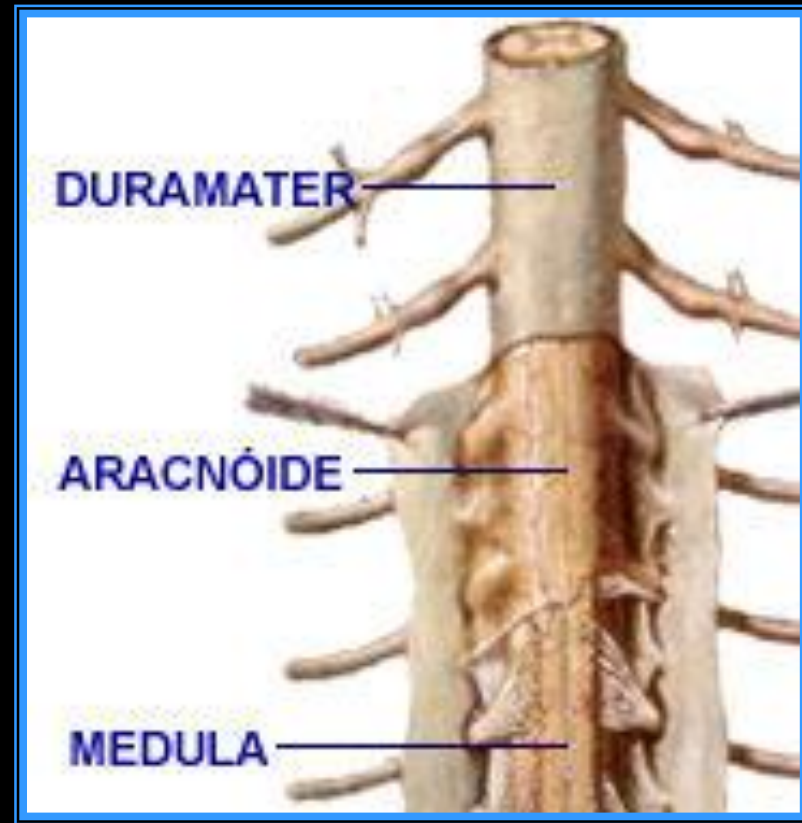
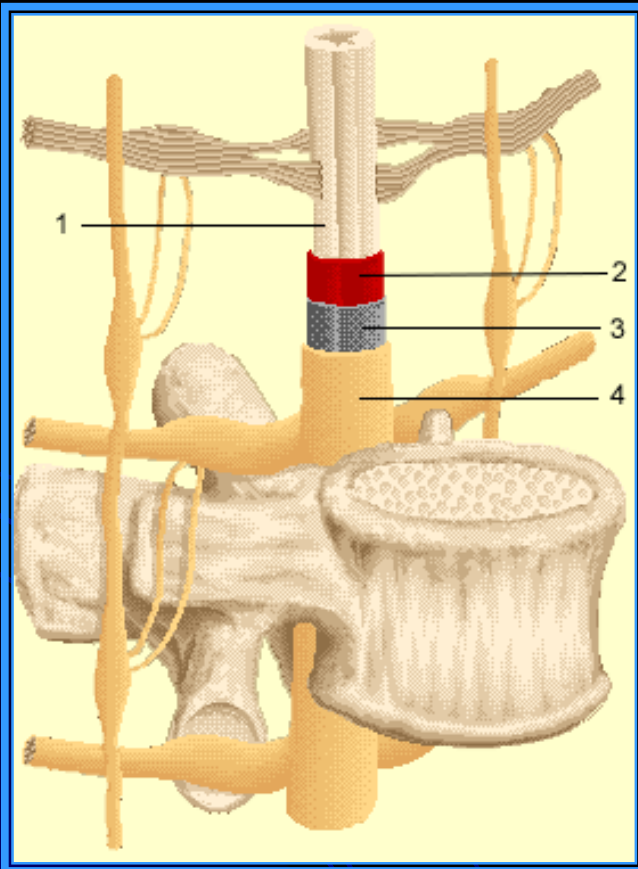
Forame magno até L₂

Cauda equina

Intumescência cervical e lombar



Meninges da medula espinal



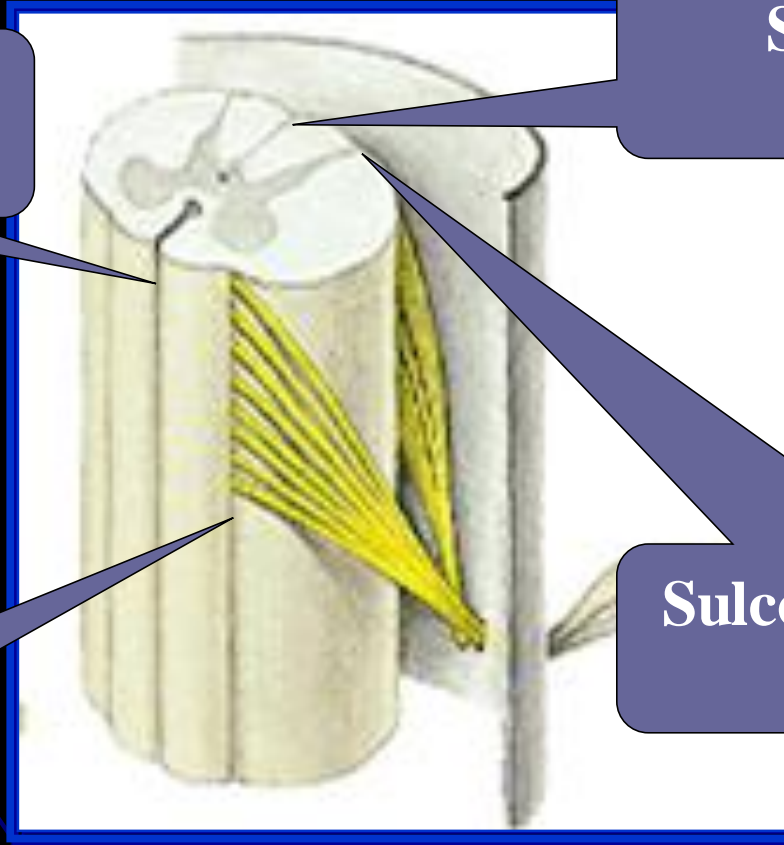
Medula Espinal- morfologia

Fissura mediana anterior

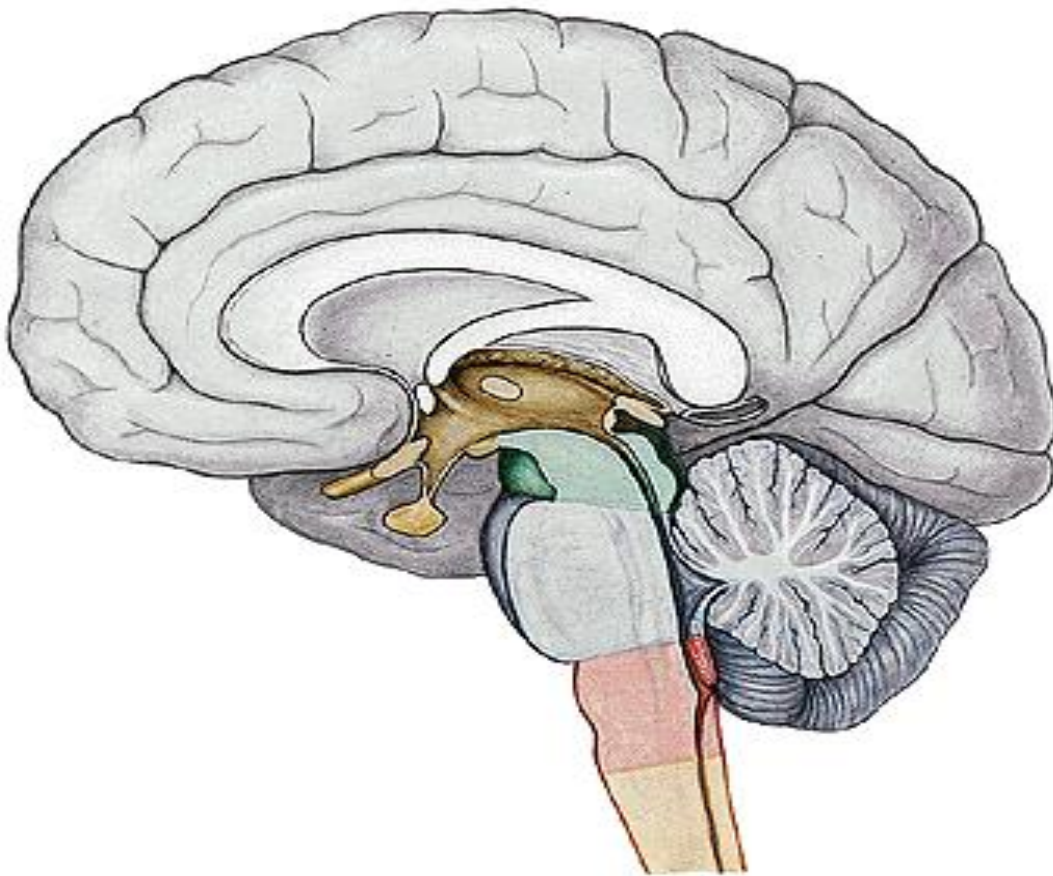
Sulco mediano posterior

Sulco lateral anterior

Sulco lateral posterior



Sistema Nervoso Central



Encéfalo

Telencéfalo

Diencéfalo

Tronco encefálico

Cerebelo

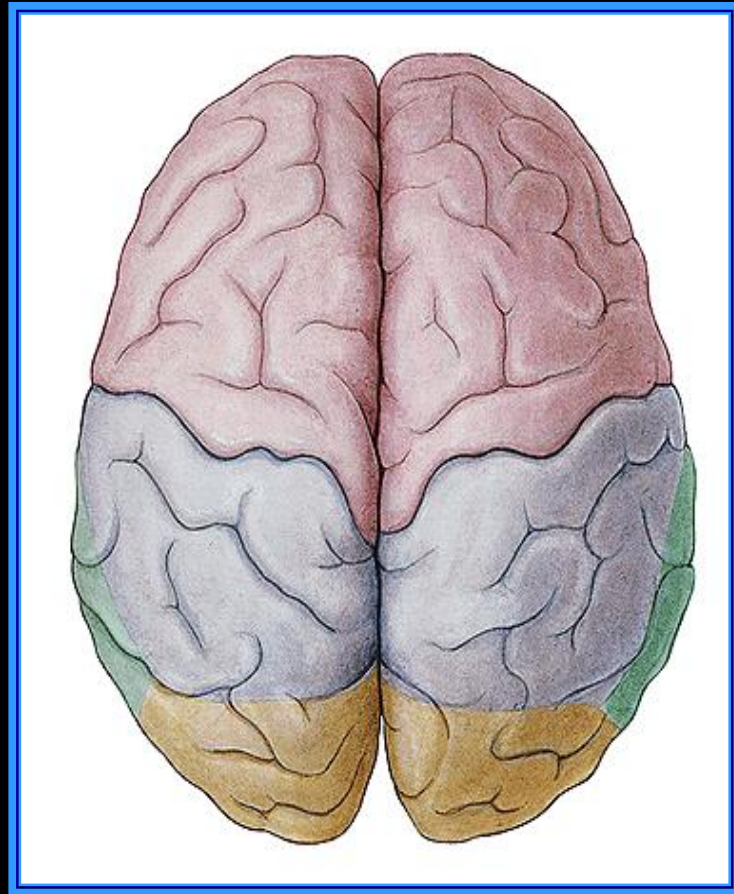
Telencéfalo

Superfície do telencéfalo:

Fissura

Giro

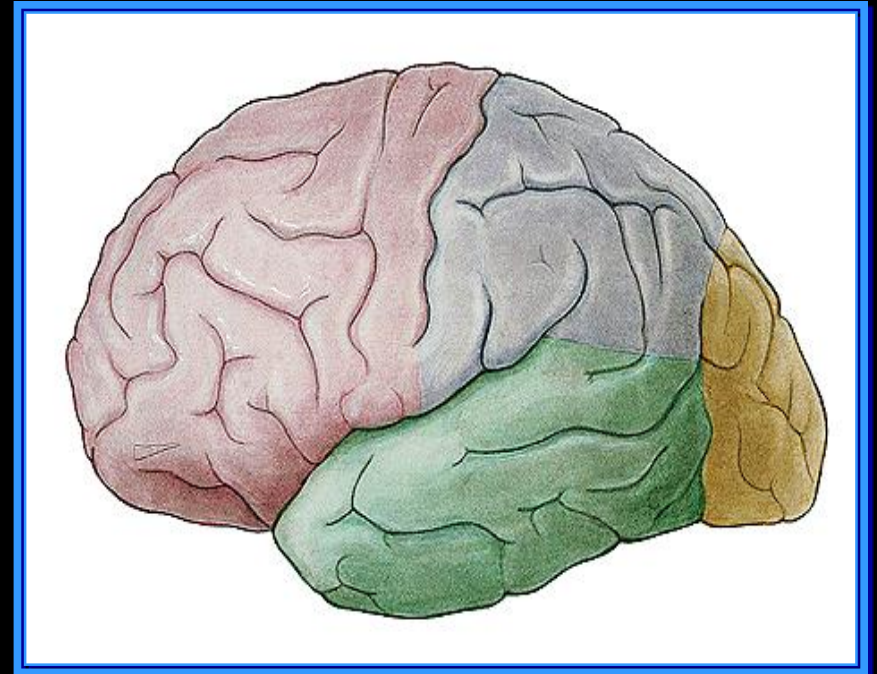
Sulcos



Telencéfalo

Lobos:

Frontal
Parietal
Temporal
Occipital
Ínsula

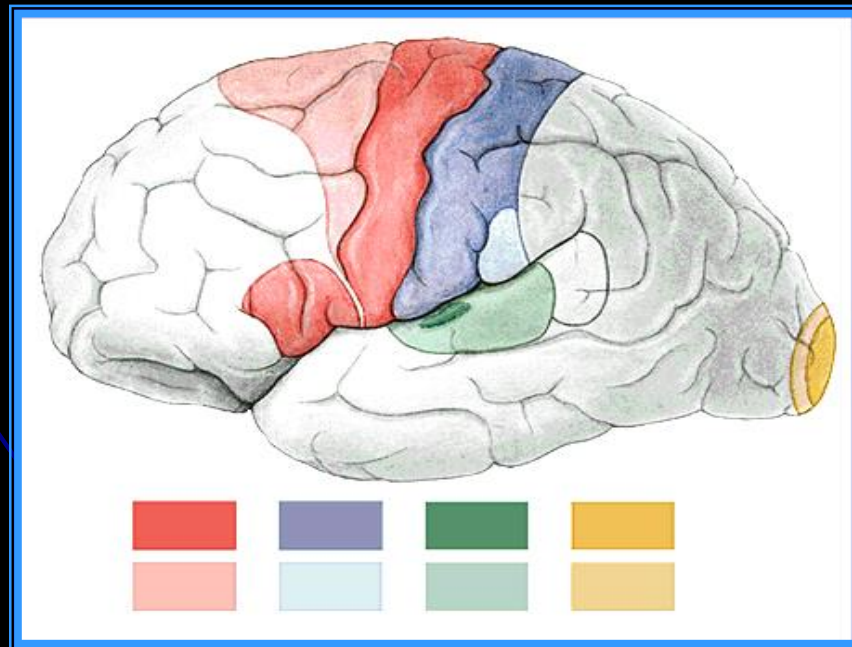


Telencéfalo

Sulco central

Giro pré-central - área motora primária

Giro pós-central - área sensitiva primária



Núcleos da base- córtex cerebral

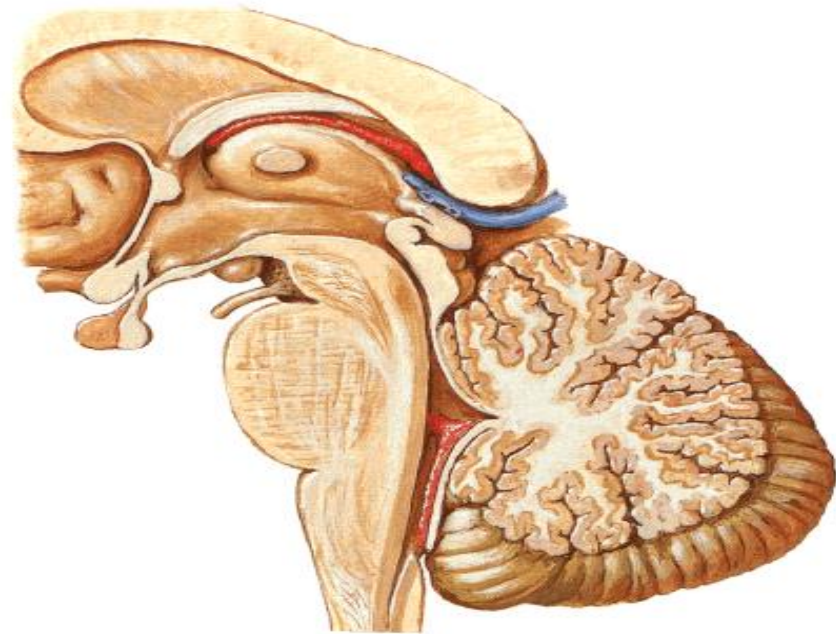


Diencéfalo

Porções:

Tálamo
Hipotálamo
Epitálamo

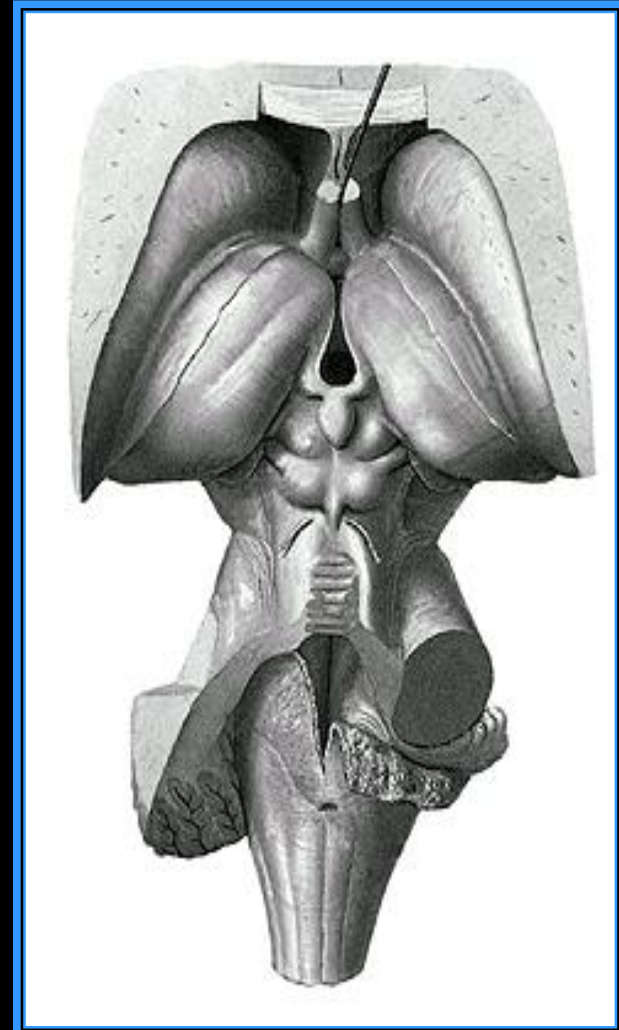
Fourth Ventricle and Cerebellum
Median Sagittal Section



NETTER

Diencéfalo

Tálamo

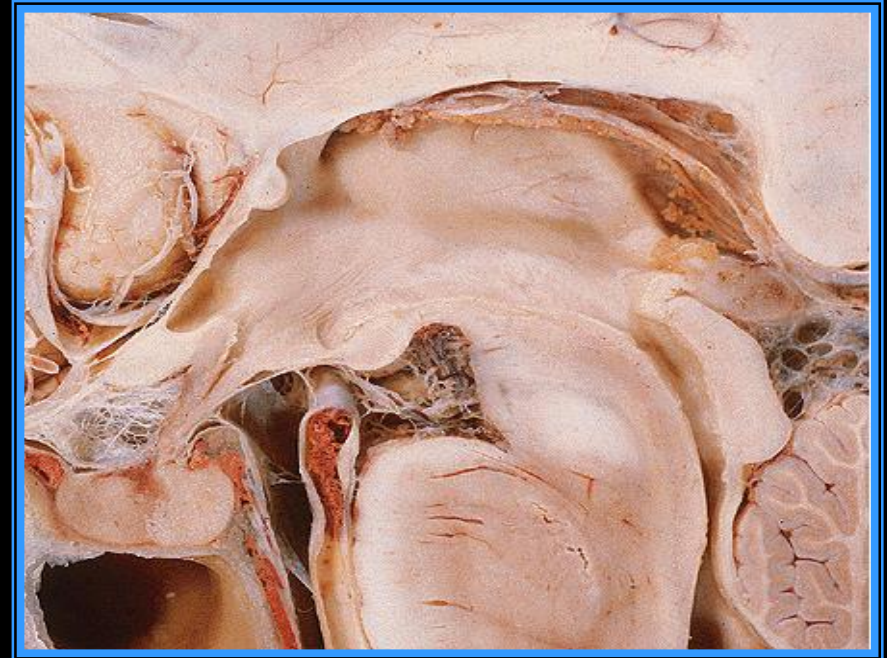


Diencéfalo

Hipotálamo

Composto por:

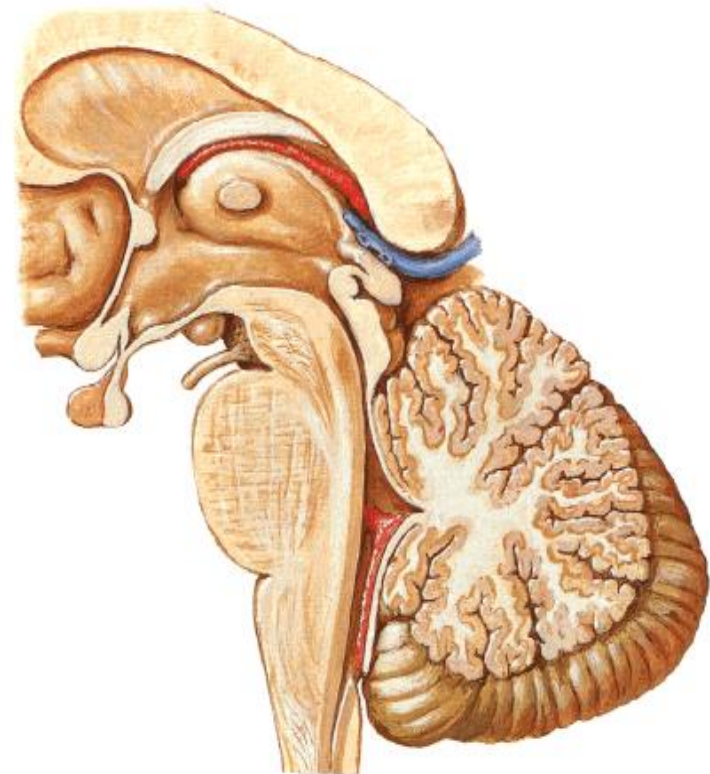
- Corpos mamilares
- Túber cinéreo
- Infundíbulo
- Quiasma óptico



Diencéfalo

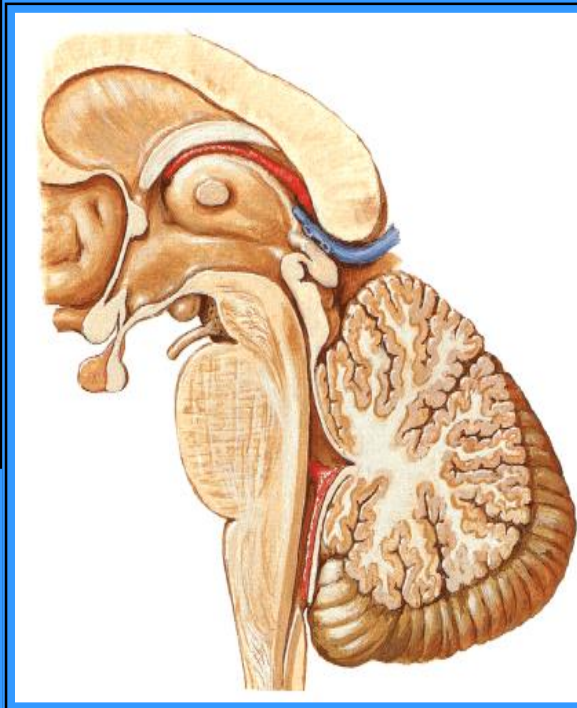
Epitálamo

Fourth Ventricle and Cerebellum
Median Sagittal Section

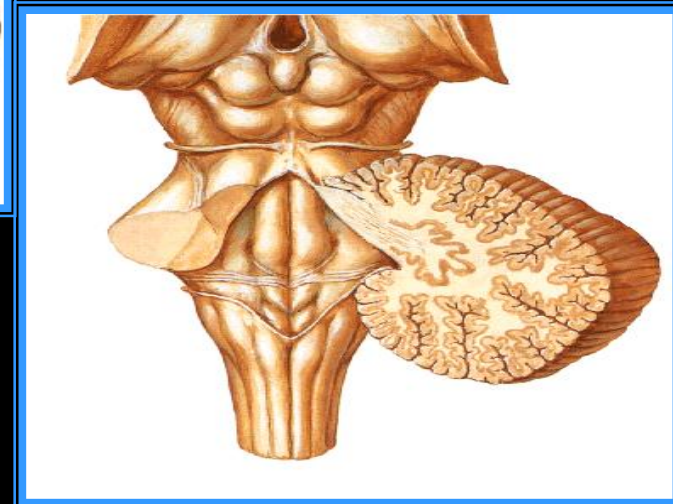
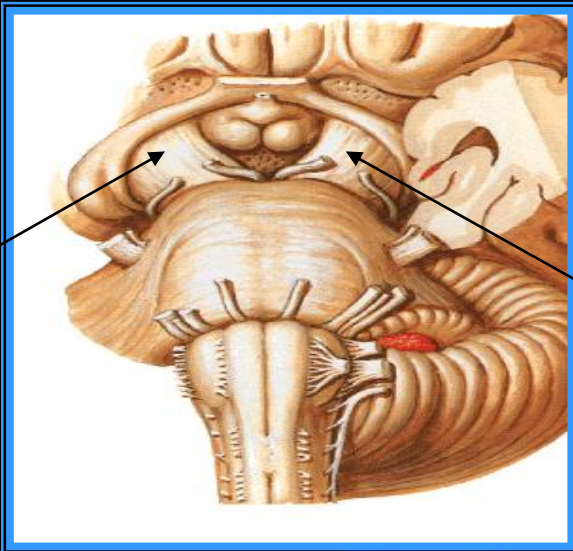


Tronco Encefálico-Mesencéfalo

Parte ventral:
pedúnculos
cerebrais



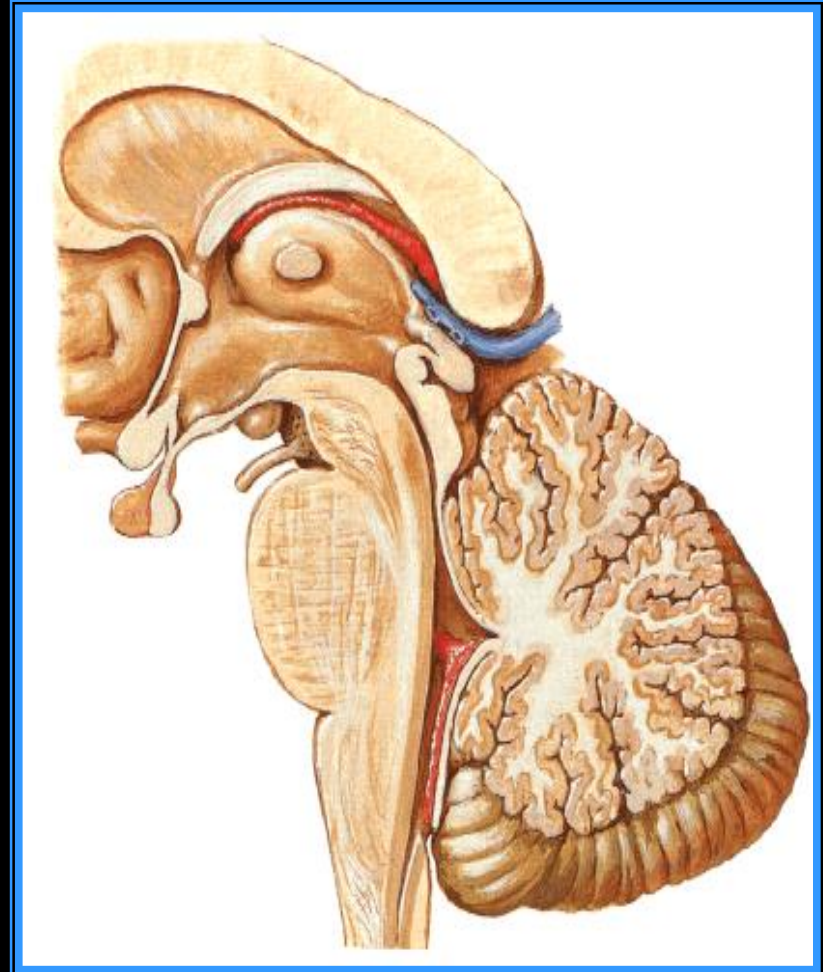
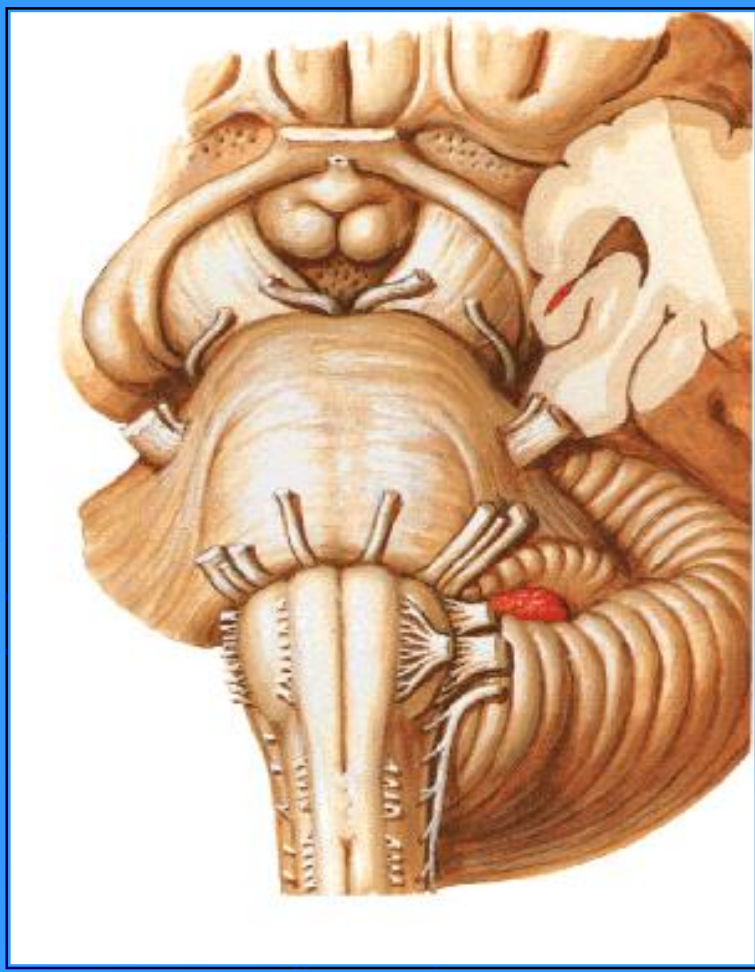
Parte dorsal:
teto (corpos
quadrigêmeos)



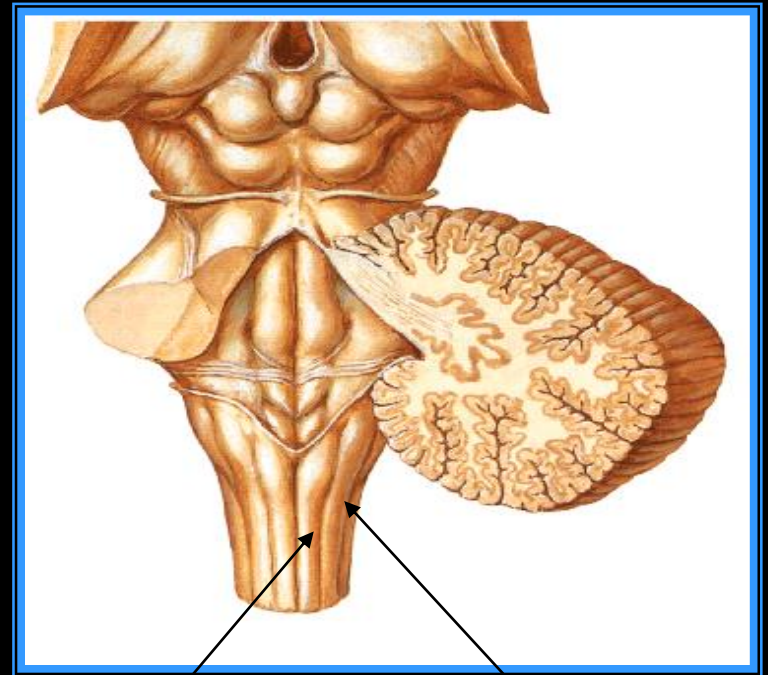
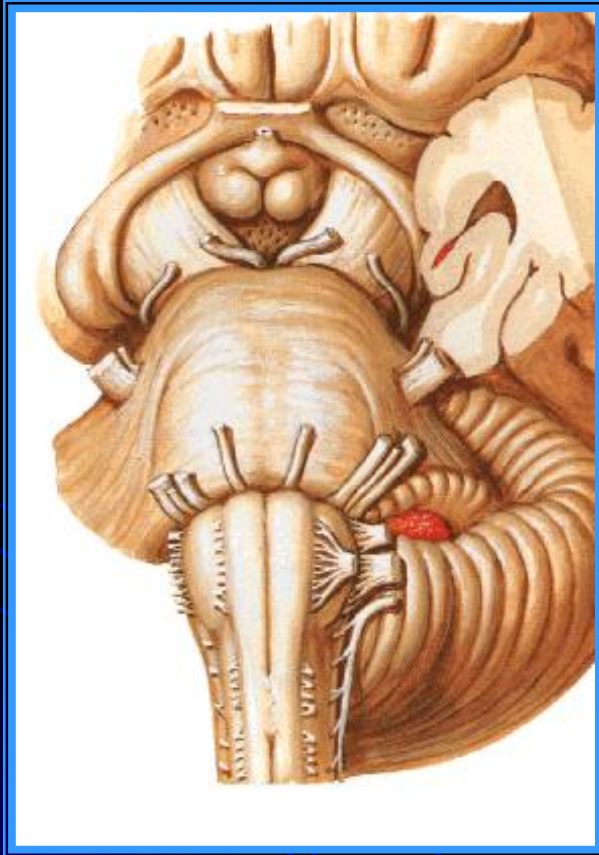
NETTER

NETTER

Tronco Encefálico-Ponte



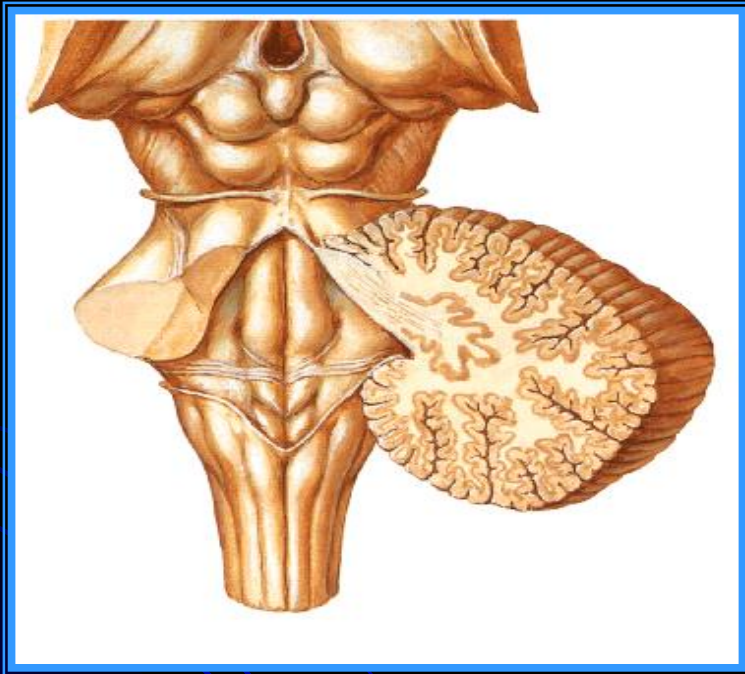
Tronco Encefálico-Bulbo



Fascículo grácil

Fascículo
cuneiforme

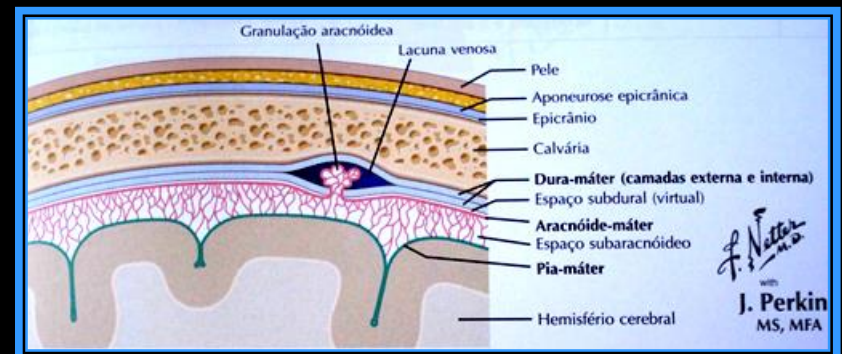
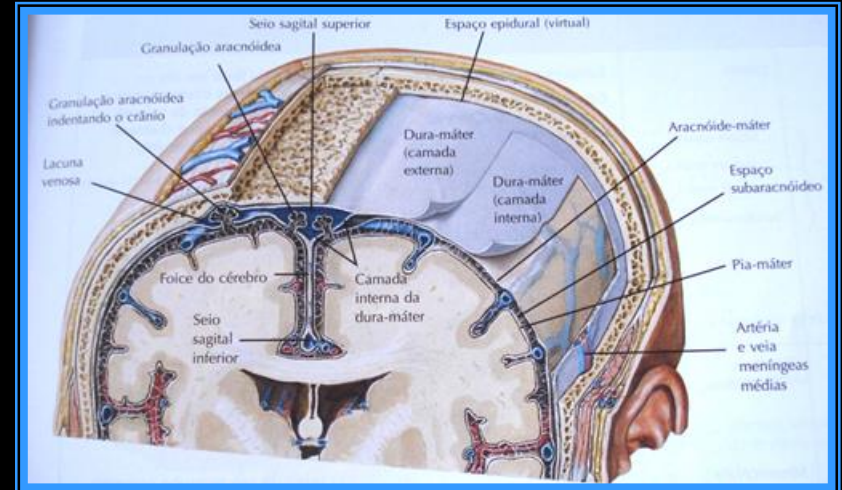
Cerebello



NETTER

Meninges

- Dura-máter
- Aracnóide
- Pia-máter



Ventrículos

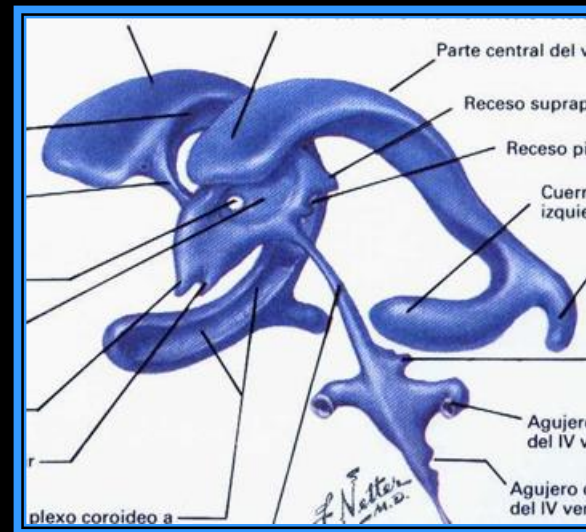


Expansões da luz do tubo neural primitivo

Presença da tela coriácea

Nomes dos ventrículos:

Laterais ,Terceiro e Quarto



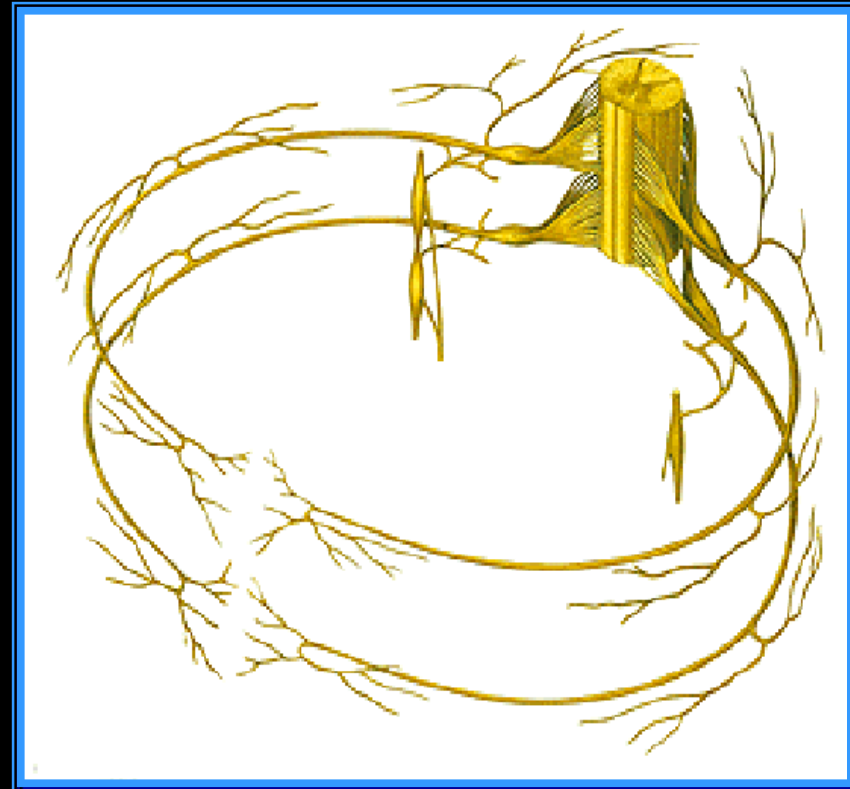
Sistema Nervoso Periférico

✓ Nervos Espinais e Cranianos

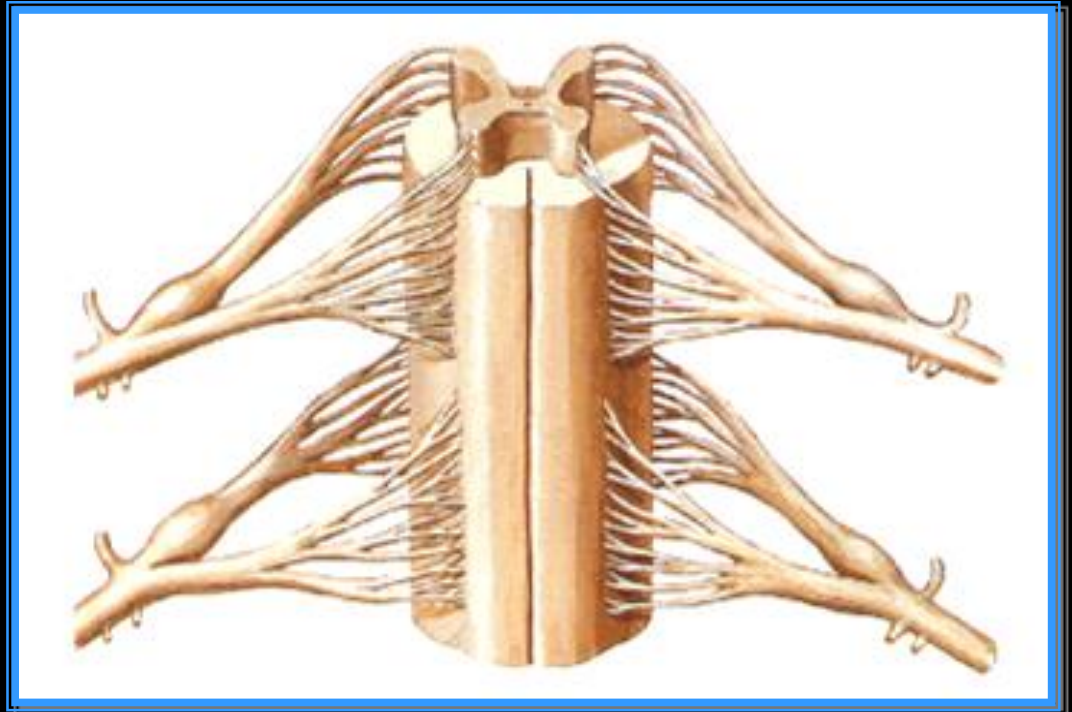
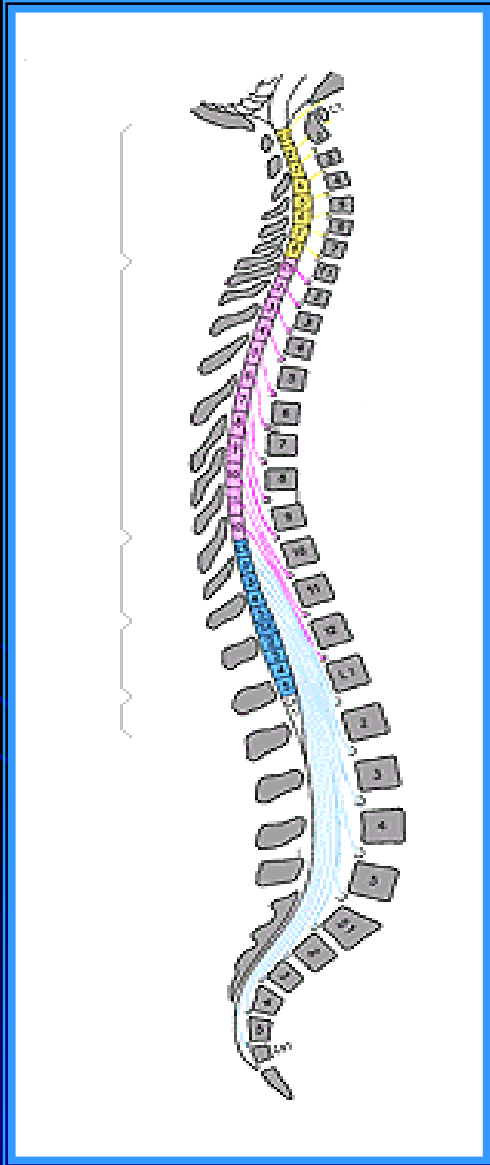
✓ Gânglios

✓ Terminações

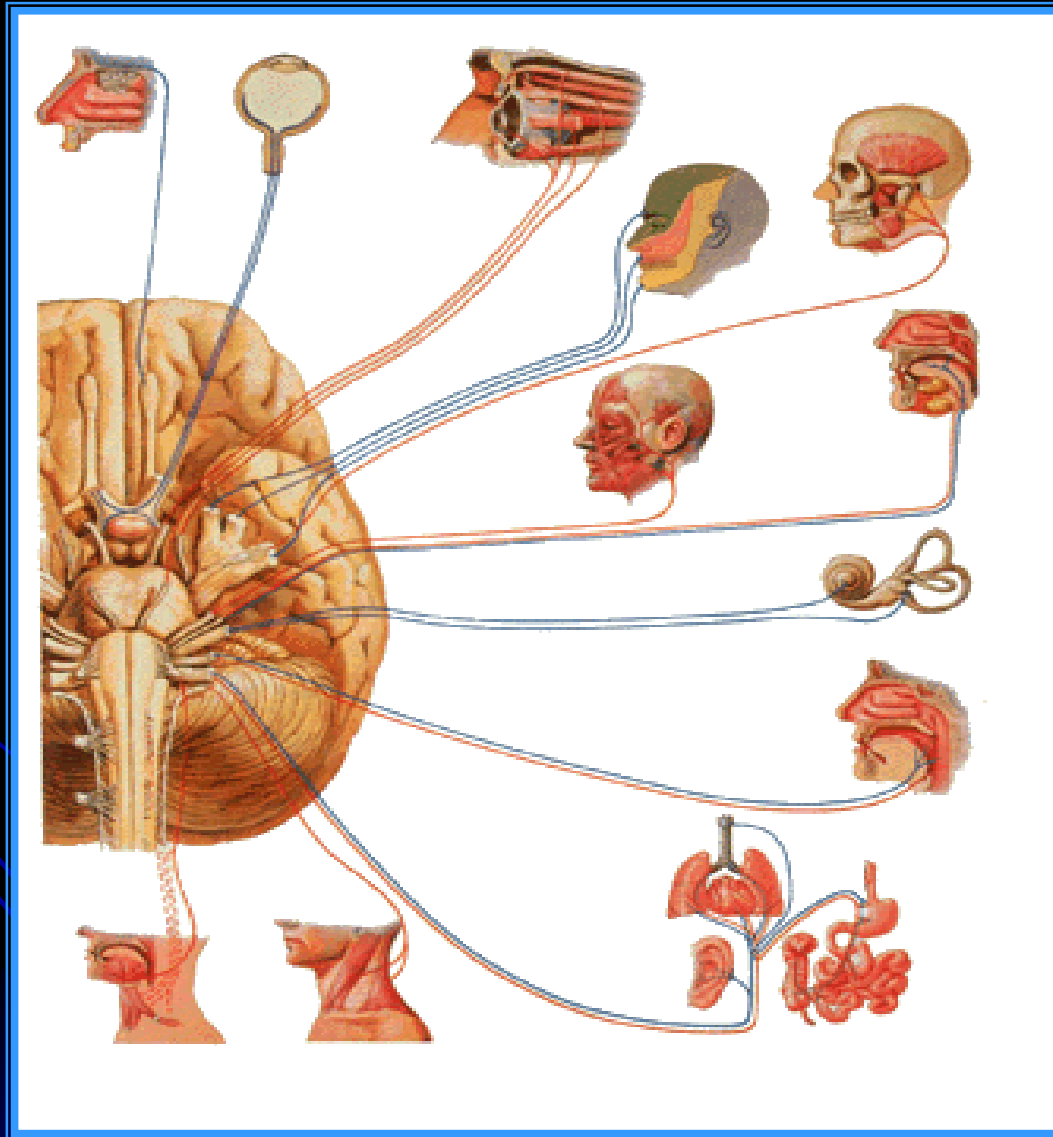
nervosas



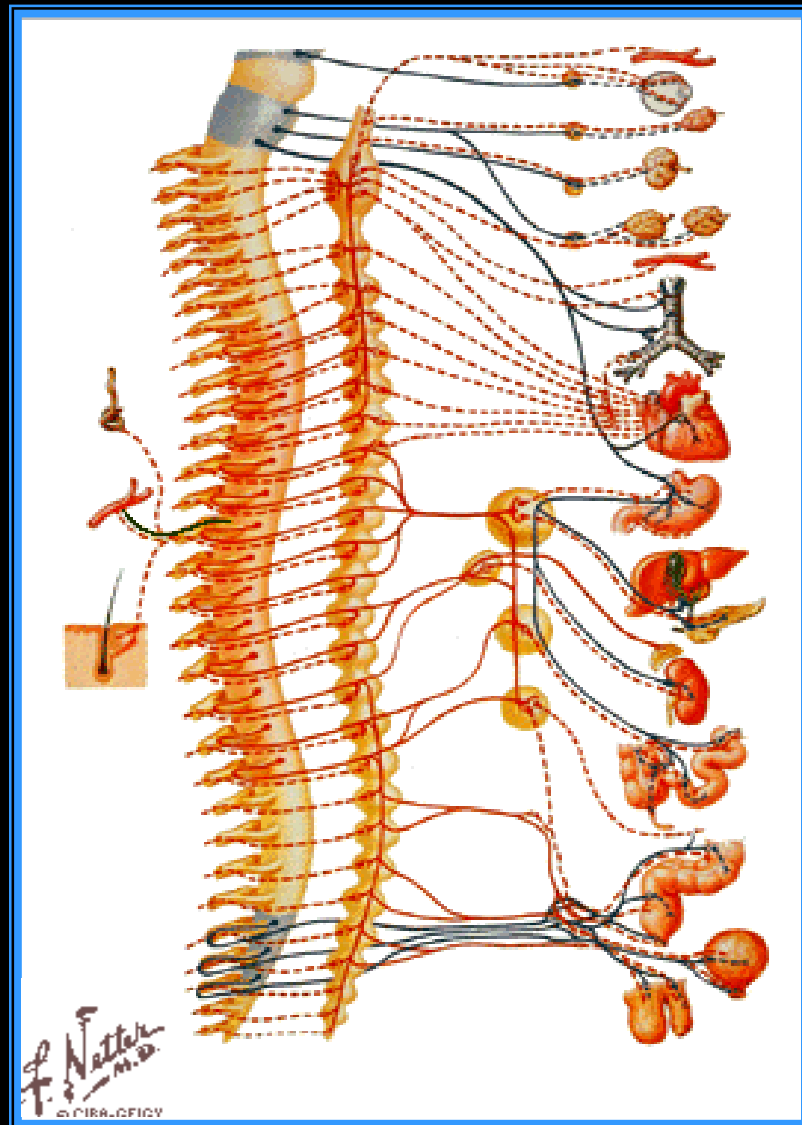
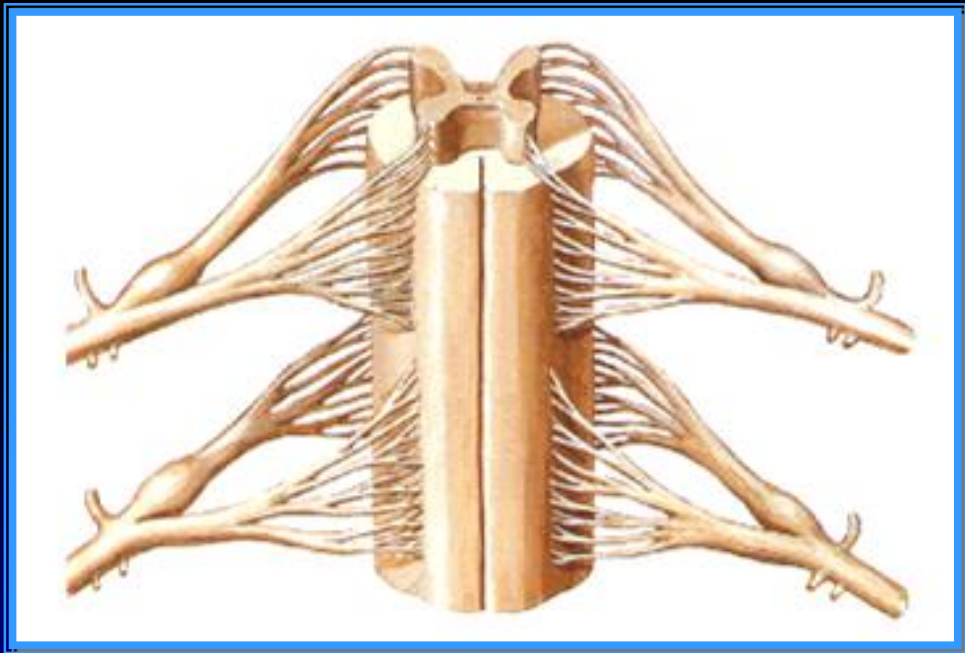
Nervos Espinais



Nervos Cranianos

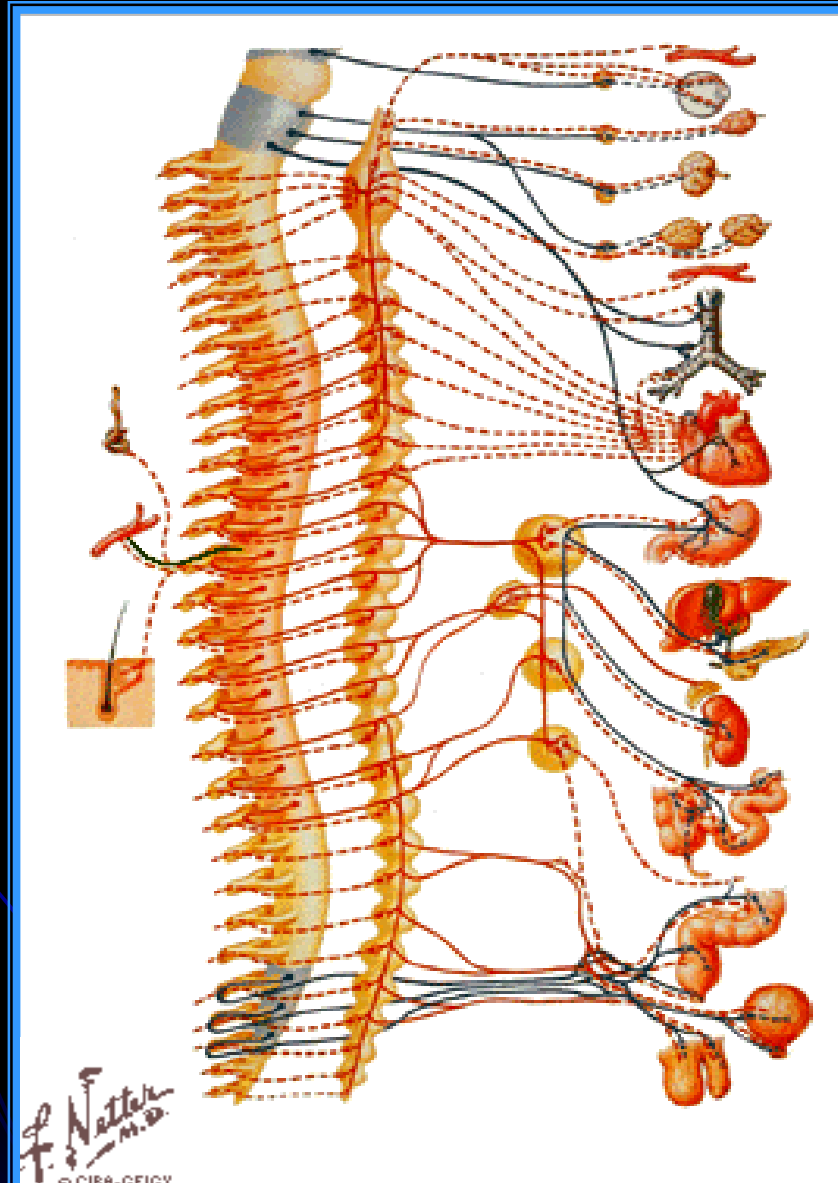


Gânglios



NETTER

Sistema Nervoso Autônomo



NETTER

Ao aluno de Anatomia,

“O cadáver transcende ao simples valor de objeto de aprendizado; e nos fala em linguagem universal que nos educa na humildade da limitação humana. Assim a atitude física, mental e verbal do aluno de anatomia deve ser de sobriedade, meditação e elevada compostura, manuseando as peças anatômicas com o mais profundo sentimento de respeito e carinho.”

Prof. Dr. Renato Locchi-USP 1963