

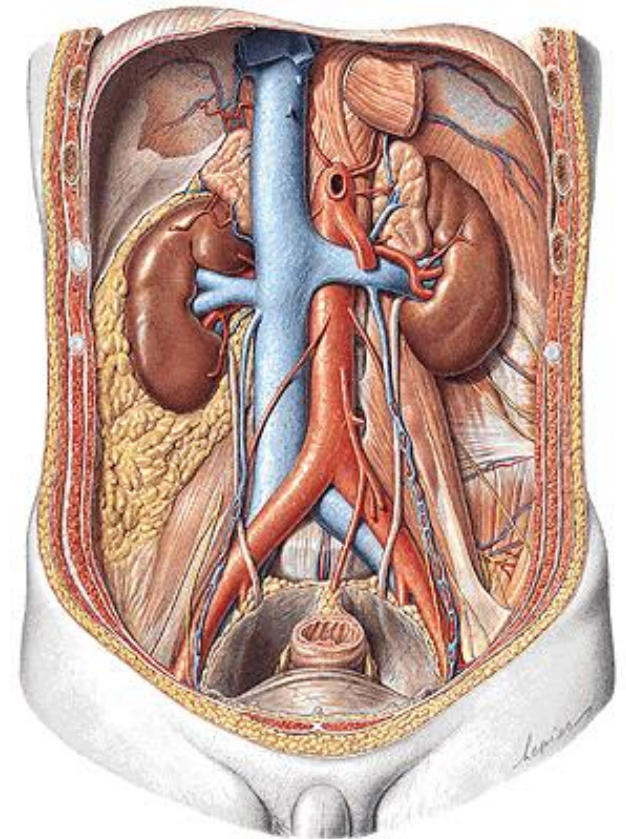
Universidade de São Paulo
Faculdade de Odontologia de Ribeirão Preto
Departamento de Biologia Básica e Oral

Sistema

Urinário

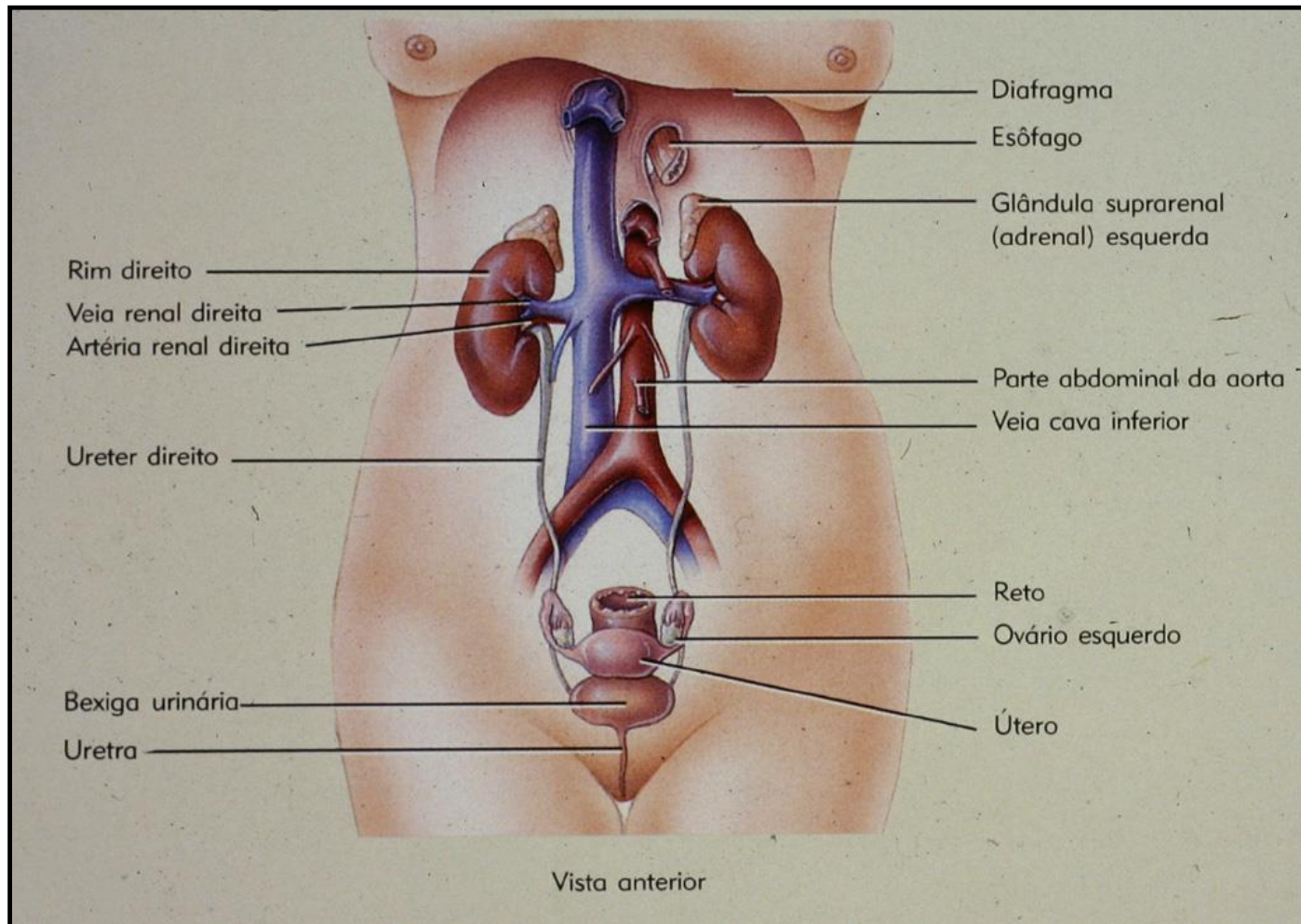
SISTEMA URINÁRIO

As atividades orgânicas resultam na decomposição de proteína, lipídios e carboidratos, acompanhada de liberação de energia e formação de produtos que devem ser eliminados para o meio externo



SISTEMA URINÁRIO

RINS, URETERES, BEXIGA E URETRA

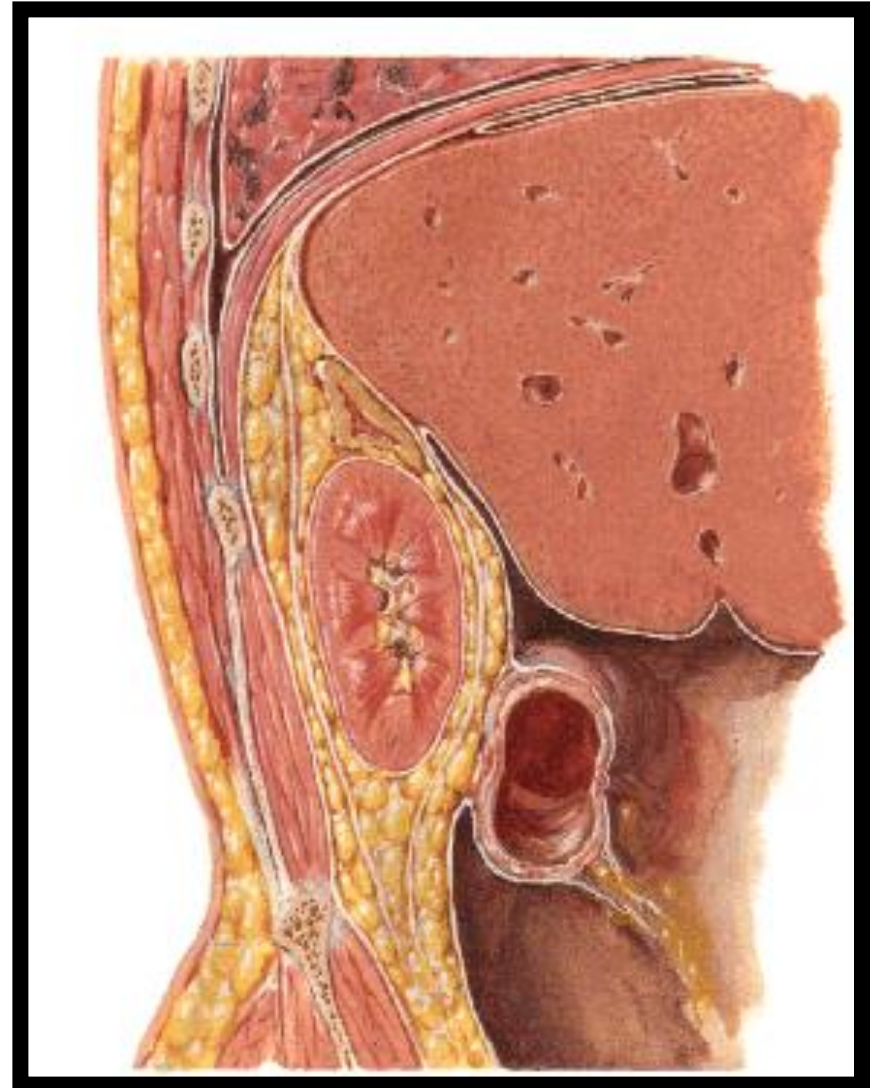


REVESTIMENTOS DOS RINS

CÁPSULA FIBROSA

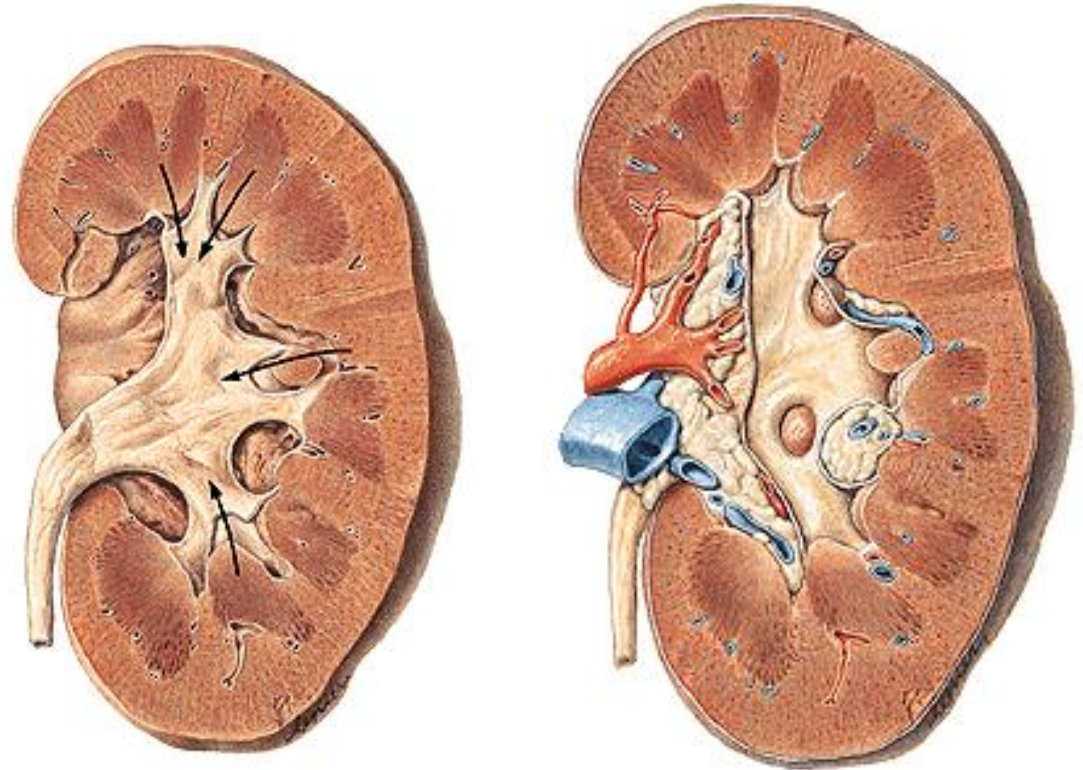
CÁPSULA ADIPOSA

FÁSCIA RENAL



HILO DOS RINS

- URETER
- ARTÉRIA
- VEIAS
- VASOS LINFÁTICOS
- NERVOS RENAIIS

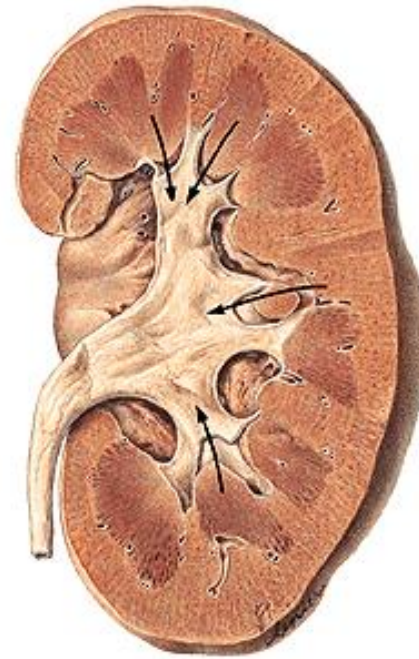


SISTEMA URINÁRIO - RIM

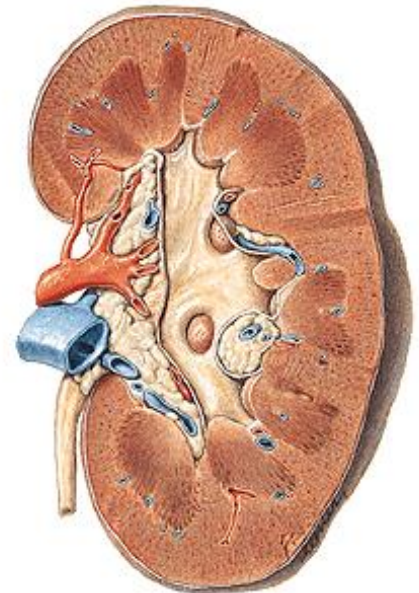
- **FACES: ANTERIOR E POSTERIOR**
- **MARGENS: MEDIAL E LATERAL**
- **EXTREMIDADES OU PÓLOS: SUPERIOR E INFERIOR**
- **GLÂNDULA SUPRA-RENAL**
- **RIM ADULTO: 10 A 12 CM COMPRIMENTO; 5 A 7,5 CM DE LARGURA E 2,5 CM DE ESPESSURA**



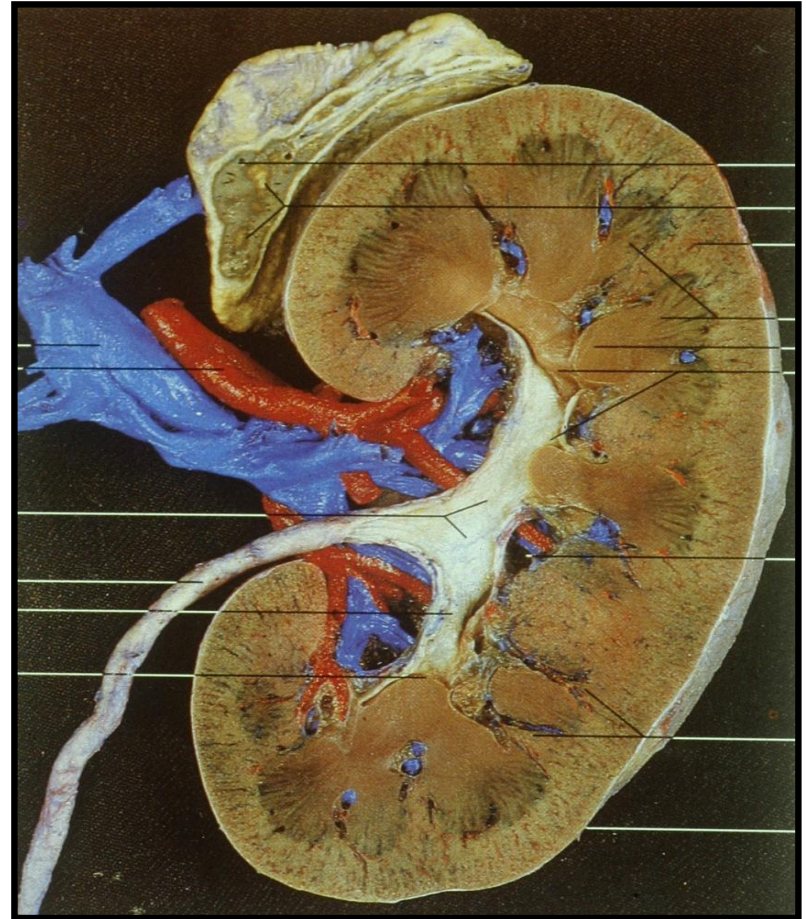
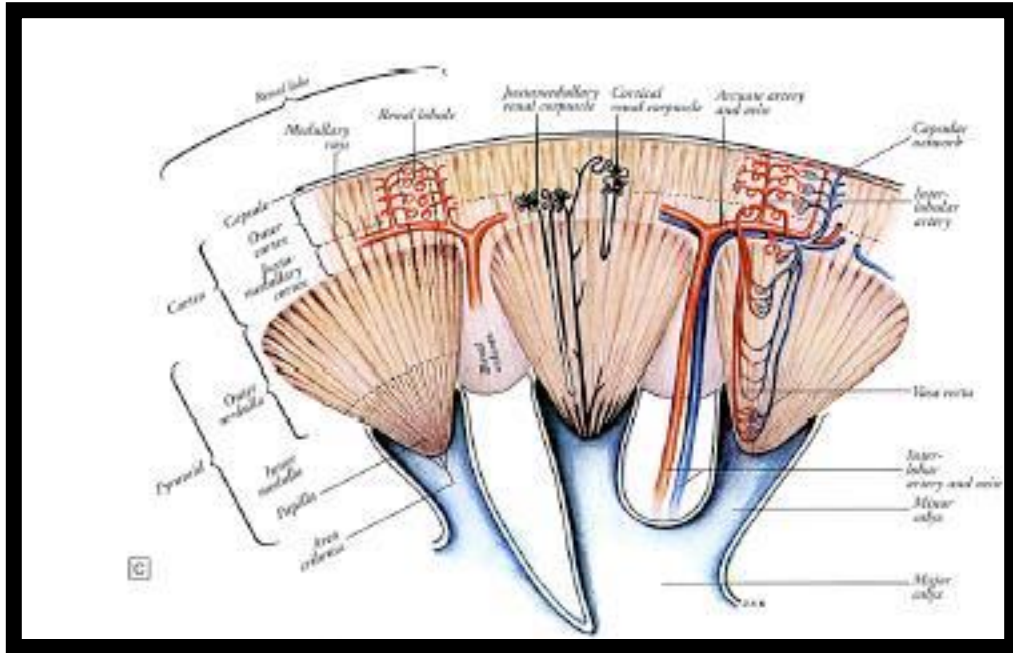
- **Córtex Renal**
- **Coluna Renal**
- **Pirâmides Renais**
- **Papila Renais**
- **Cálice Renais Maiores**
- **Cálice Renais Menores**
- **Pelve Renal**
- **Seio Renal**

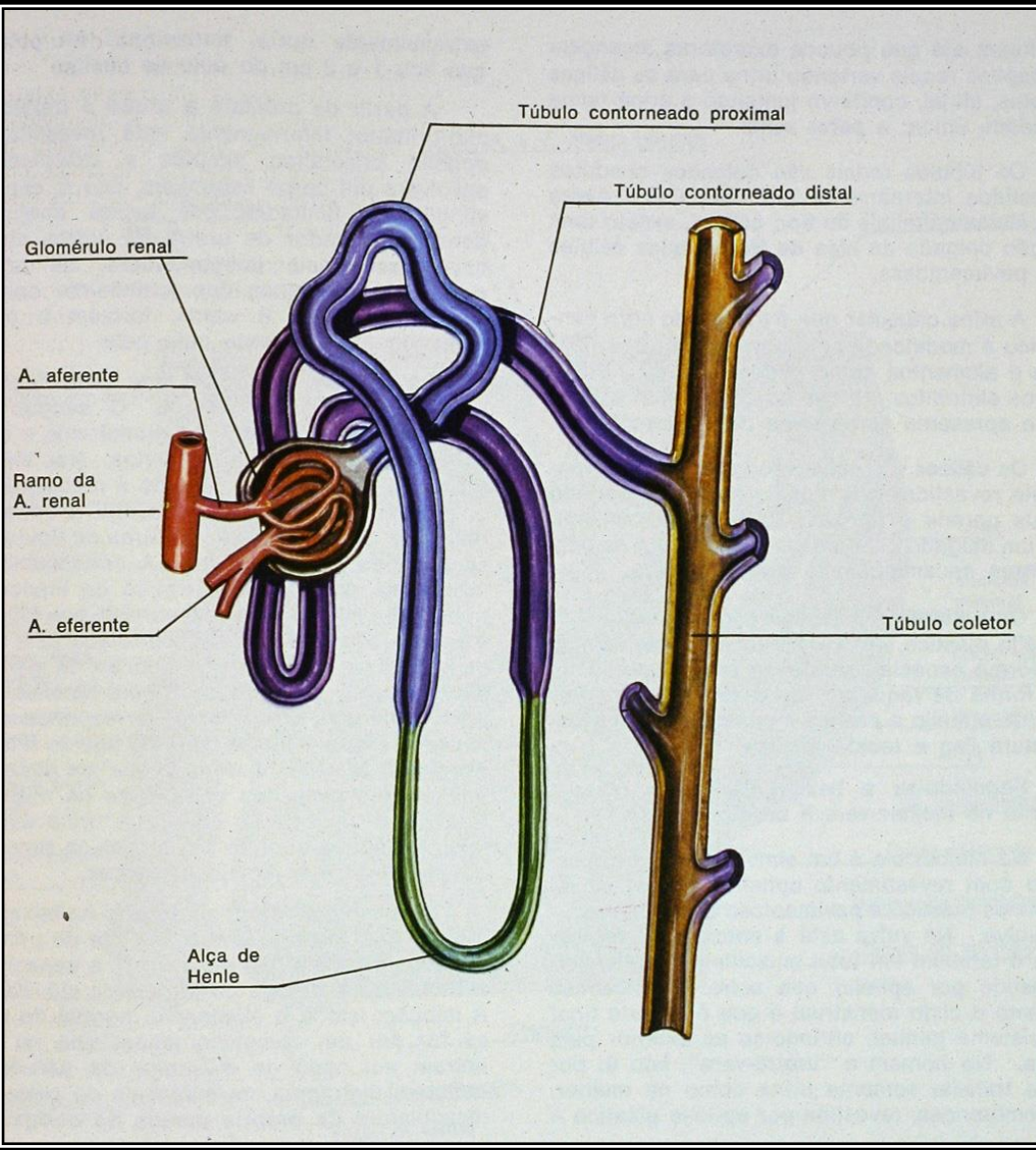


RIM

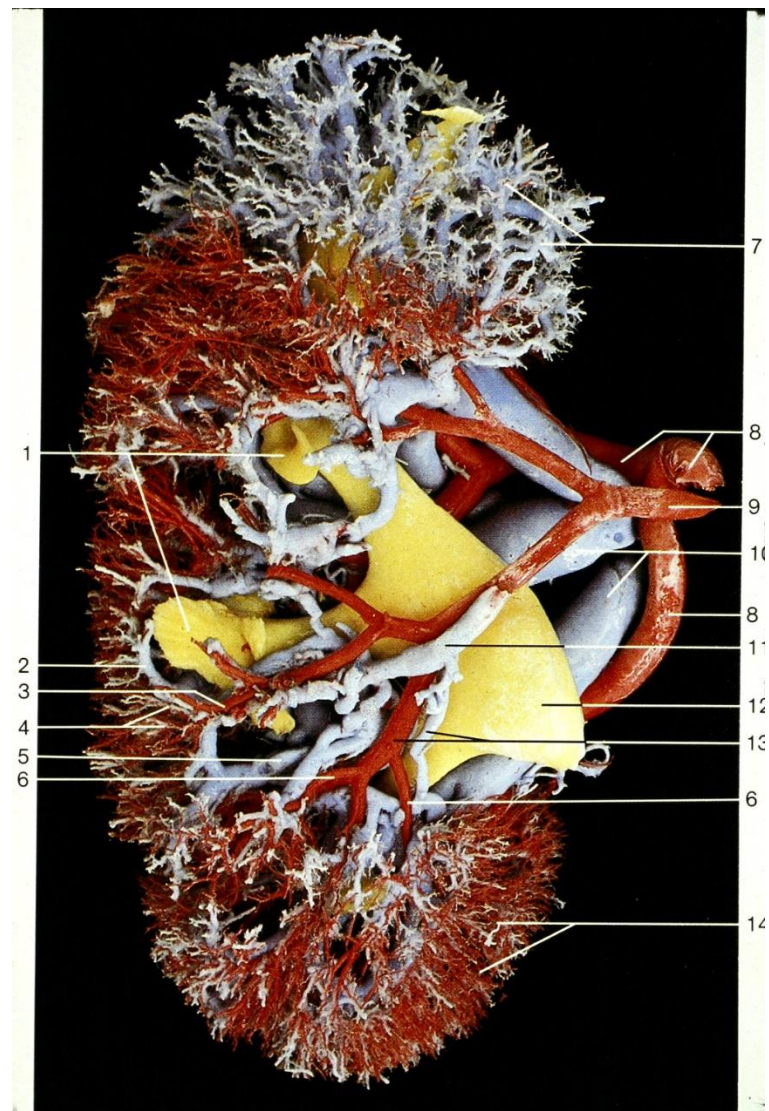


SISTEMA URINÁRIO





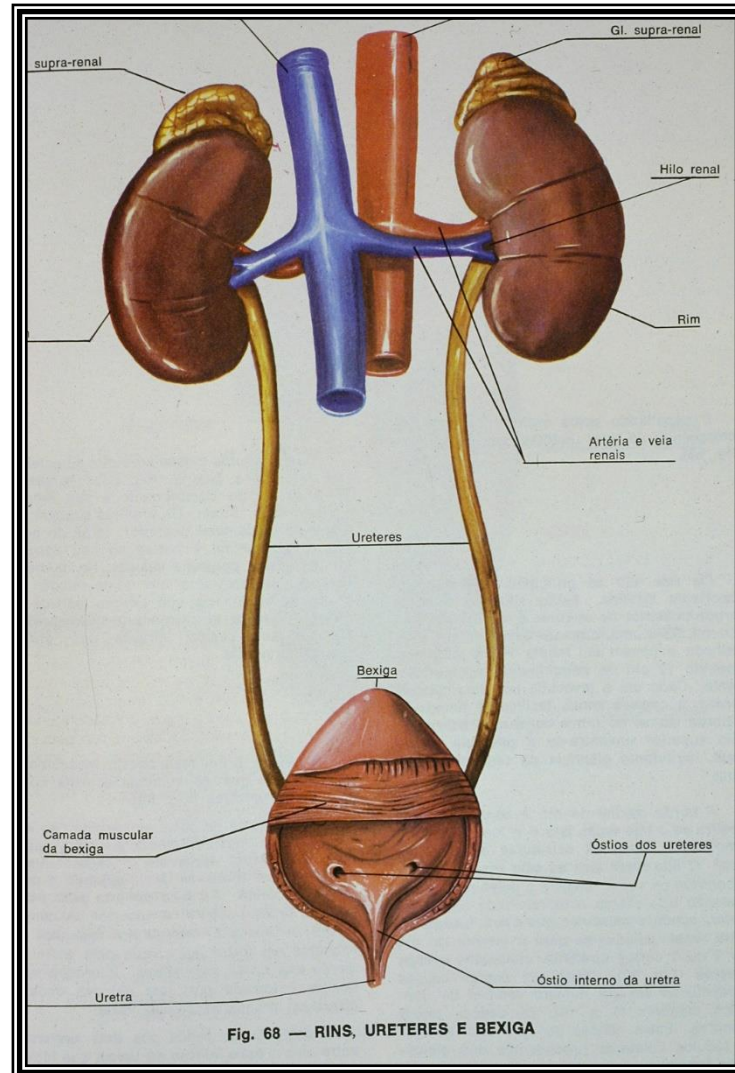
Unidade Funcional - Néfron



Vascularização

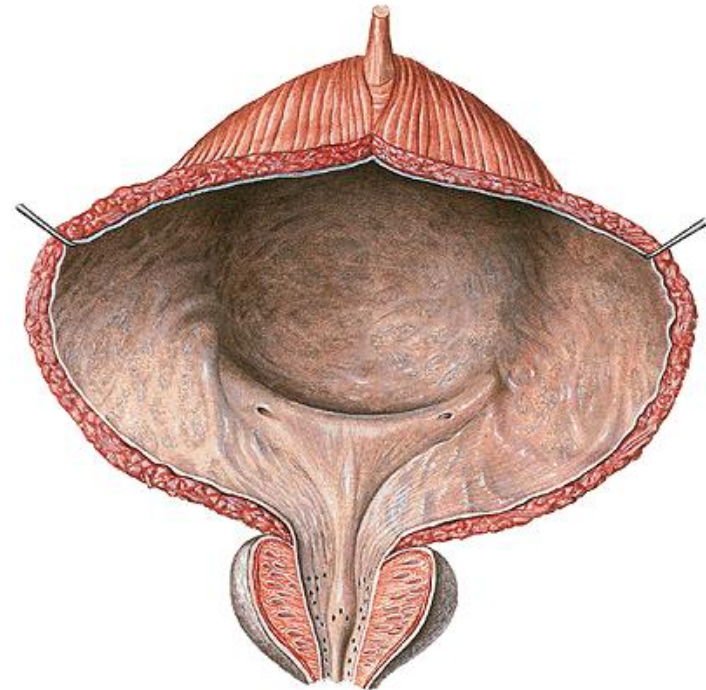
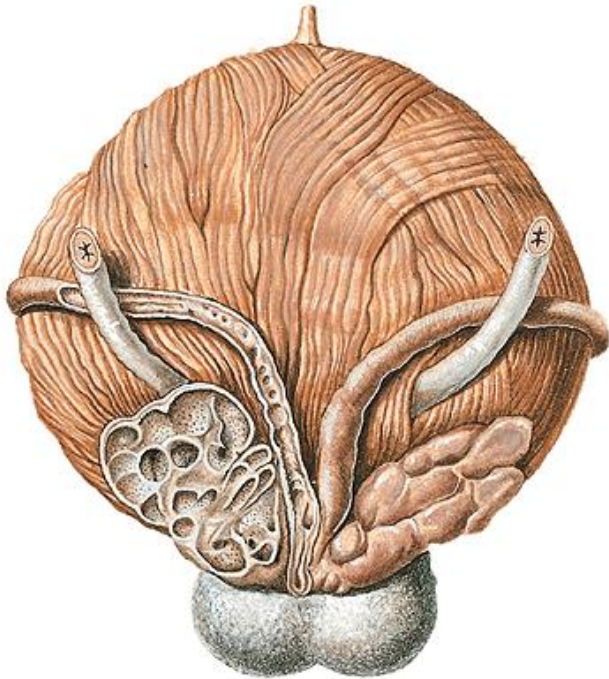
URETER

- **PARTE ABDOMINAL**
- **PARTE PÉLVICA**
- **PARTE INTRAMURAL**



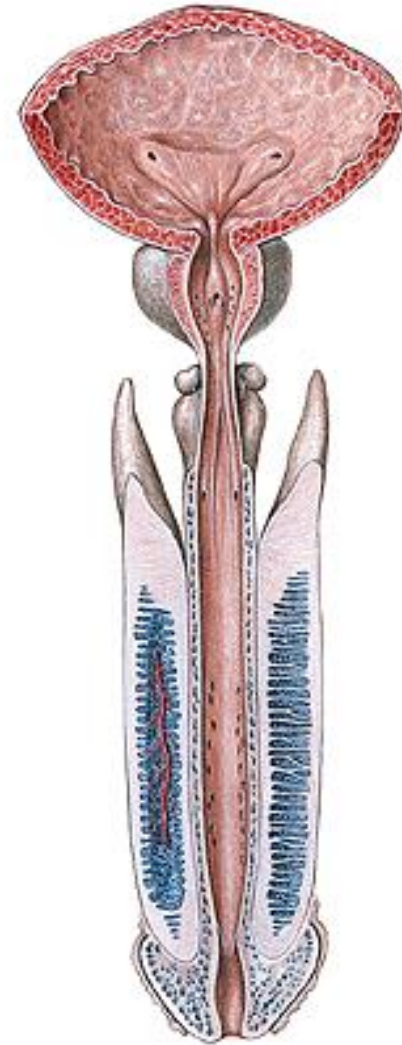
BEXIGA

- **ÓSTIOS URETERAIS**
- **ÓSTIO INTERNO DA URETRA**
- **TRÍGONO VESICAL DA BEXIGA**



URETRA MASCULINA

- MICÇÃO E EJACULAÇÃO:
- PARTE PROSTÁTICA
- PARTE MEMBRANÁCEA
- PARTE ESPONJOSA –
FOSSA NAVICULAR-
ÓSTIO EXTERNO DA
URETRA



URETRA FEMININA

- URETRA FEMININA - MICÇÃO

