



Sistema

Genital

# SISTEMA GENITAL MASCULINO

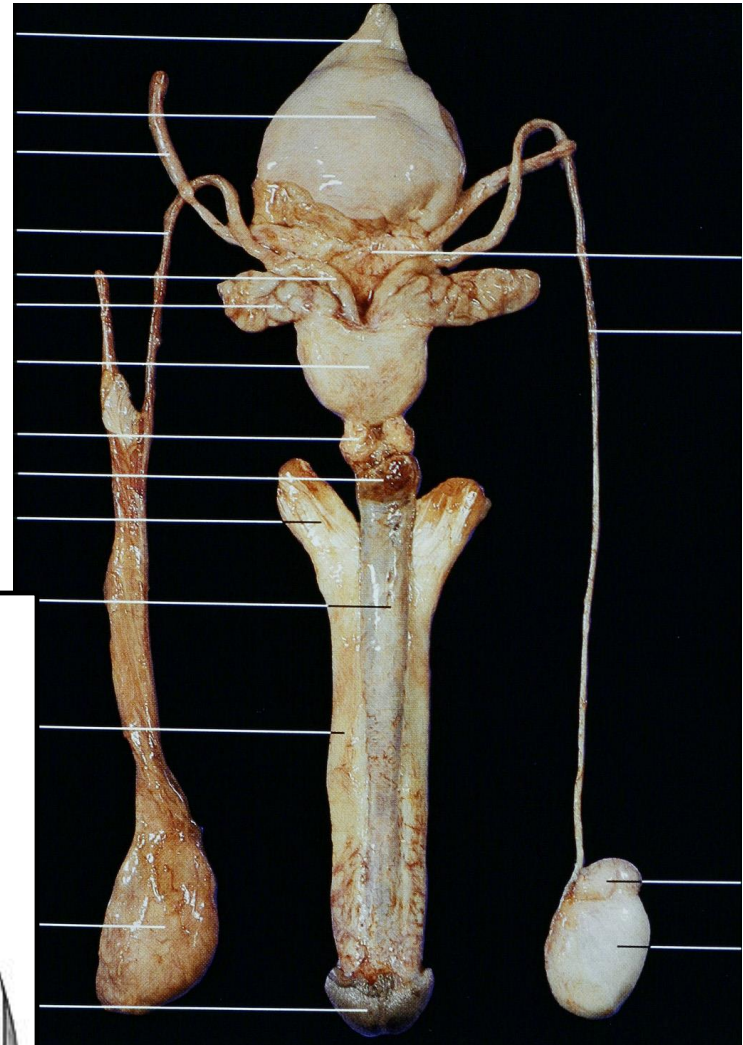
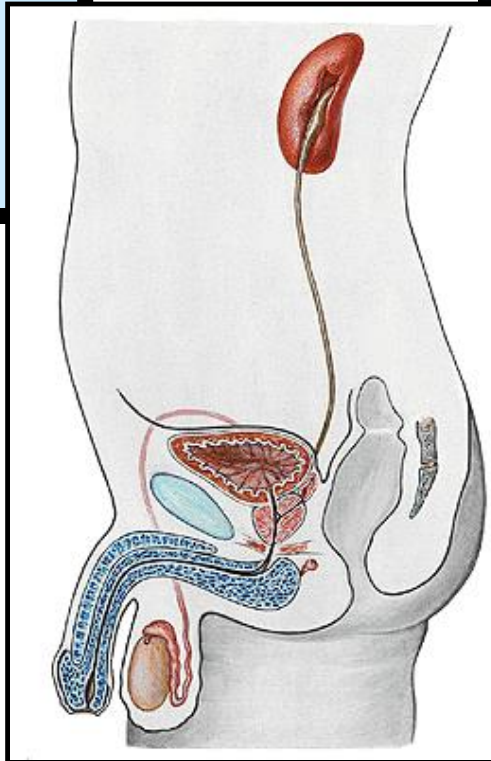
# SISTEMA GENITAL MASCULINO

- **O sistema reprodutor é o encarregado da reprodução na espécie humana, bem como na maioria dos animais superiores, a reprodução é sexuada, realizada por células especiais – gametas – zigoto**

# GENITAL MASCULINO

- GÔNADAS – TESTÍCULOS
- VIAS CONDUTORAS DE GAMETAS – TÚBULOS E DÚCTULOS DOS TESTÍCULOS, EPIDÍDIMO, DUCTO DEFERENTE, DUCTO EJACULATÓRIO E URETRA
- ÓRGÃO DE CÓPULA – PÊNIS

- Glândulas Anexas – Próstata e Glândula Bulbo-uretrais

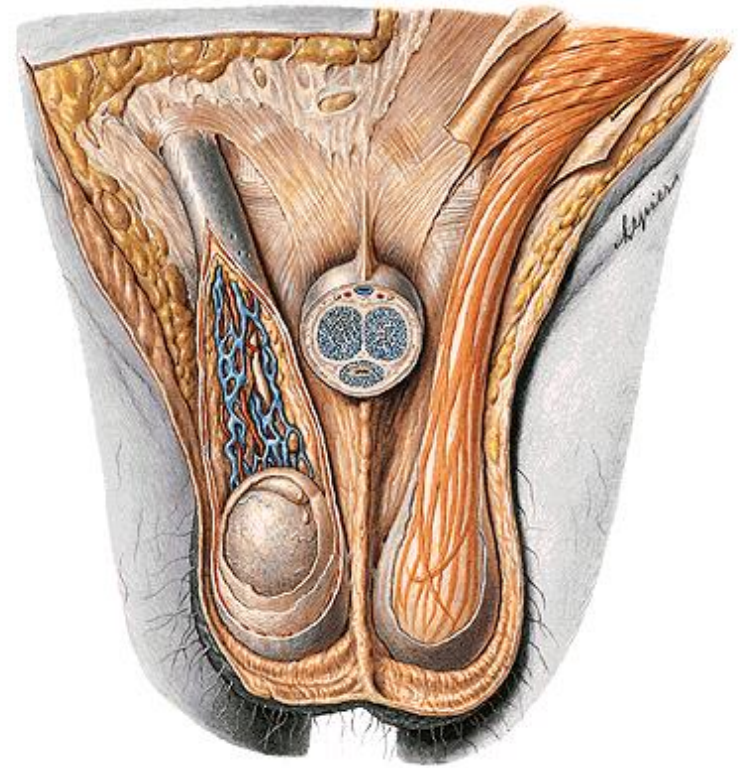


# GÔNADAS - TESTÍCULOS

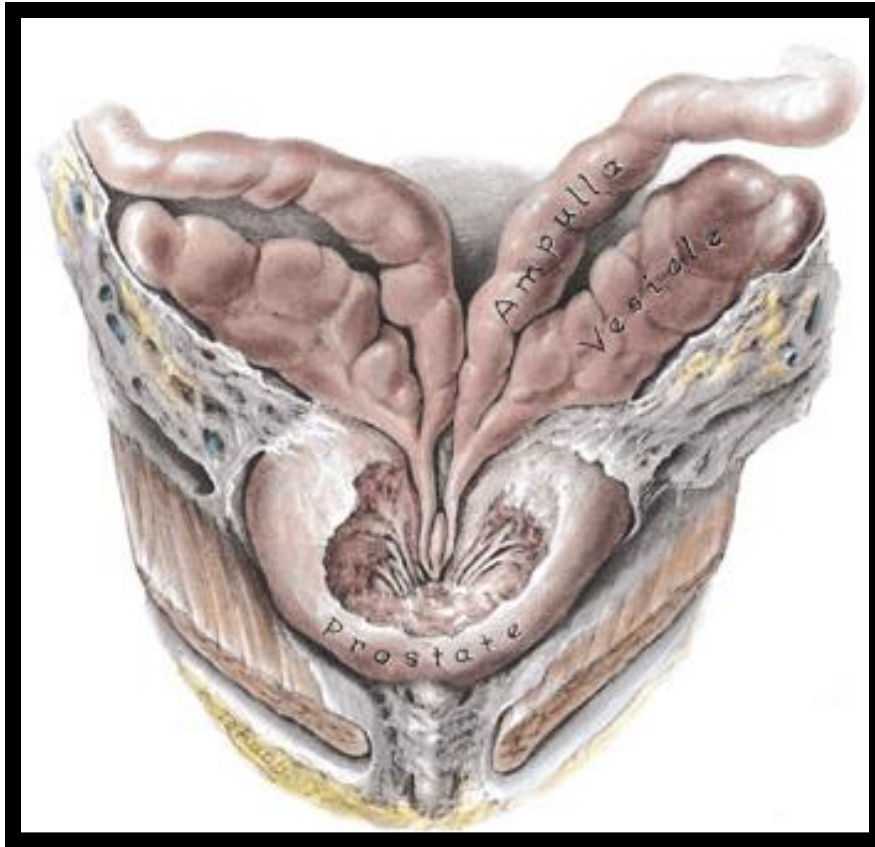
- VIAS CONDUTORAS DE GAMETAS – TÚBULOS E DÚCTULOS DOS TESTÍCULOS, EPIDÍDIMO, DUCTO DEFERENTE
- REVESTIMENTOS DO TESTÍCULOS – ESCROTO, TÚNICA DARTOS, FÁSCIA ESPERMÁTICA EXTERNA E INTERNA, TÚNICA VAGINAL PARIETAL E VISCERAL E TÚNICA ALBUGÍNEA

## MEMBRANAS DE REVESTIMENTO

- TÚNICA ALBUGÍNEA
- FUNÍCULO ESPERMÁTICO
- MÚSCULO CREMÁSTER
- TÚNICA DARTOS
- ESCROTO

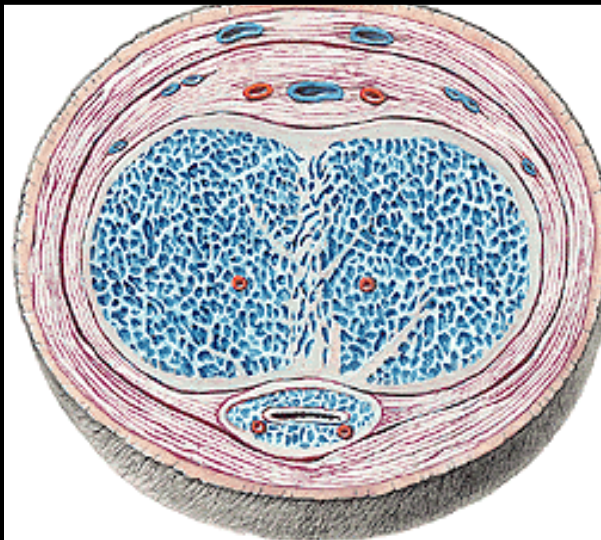
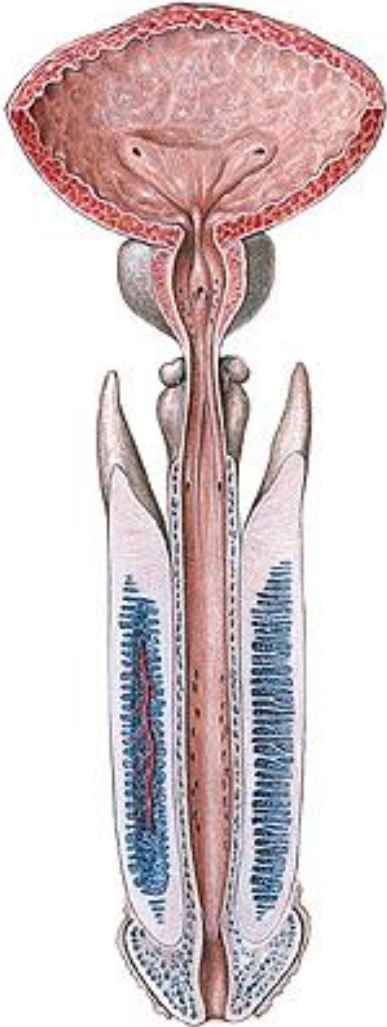


# DUCTOS DEFERENTE E DUCTOS DAS VESÍCULAS SEMINAIS: DUCTO EJACULATÓRIO



# PÊNIS

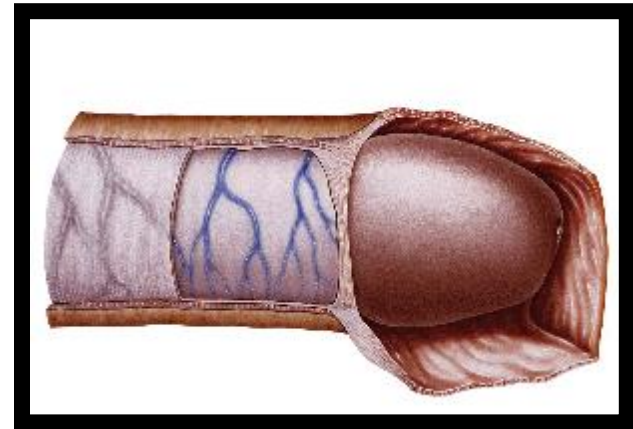
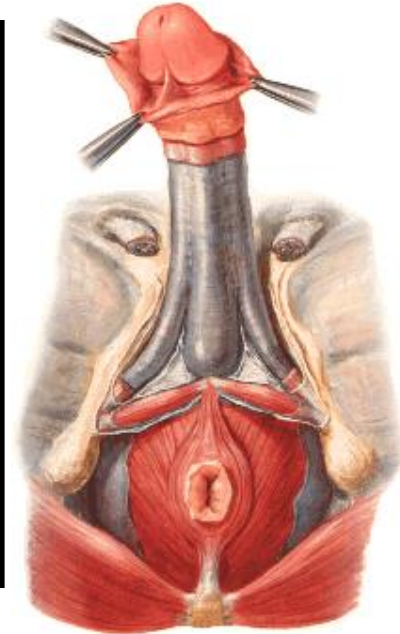
- É O ÓRGÃO DA CÓPULA, SENDO FORMADO POR DOIS CORPOS CAVERNOSOS E UM CORPO ESPONJOSO, SENDO DIVIDIDO EM :  
UMA RAIZ, UM CORPO E UMA GLANDE
- REVESTIDO PELO PREPÚCIO
- O CORPO DO PÊNIS É FORMADO PELO BULBO E PELA GLANDE DO PÊNIS
- RAIZ DO PÊNIS : BULBO DO PÊNIS E RAMOS DO PÊNIS



# ÓRGÃOS GENITAIS EXTERNO - PÊNIS E ESCROTO



# PÊNIS





# Sistema Urogenital Feminino

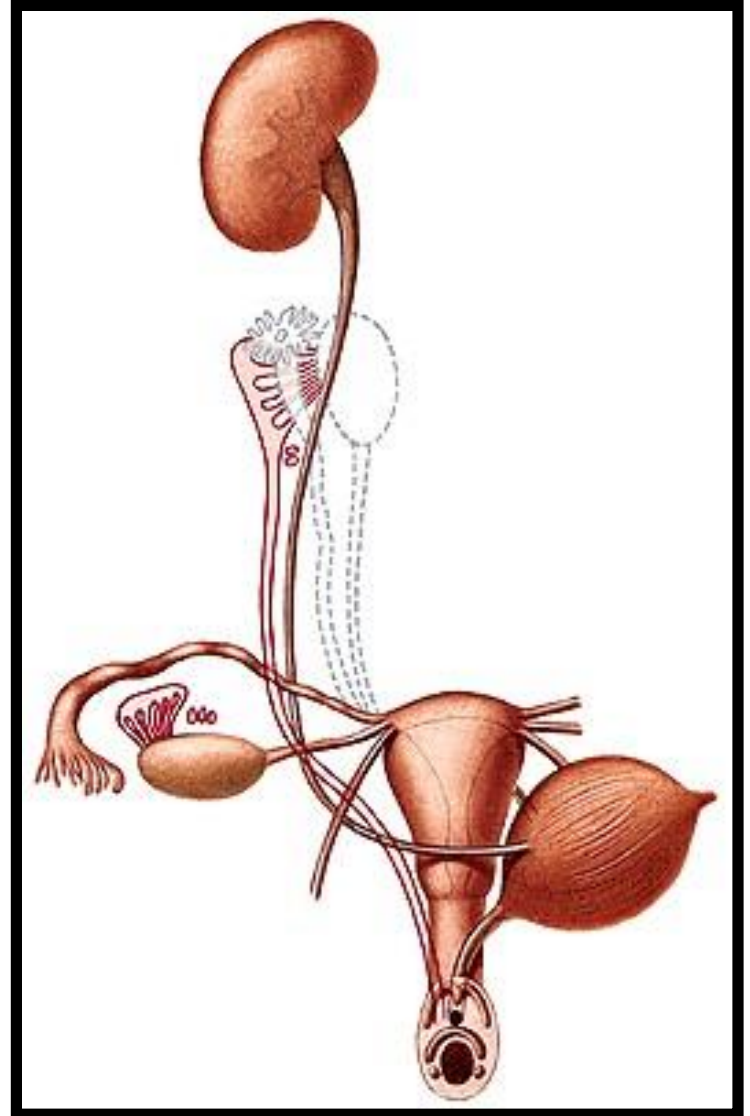
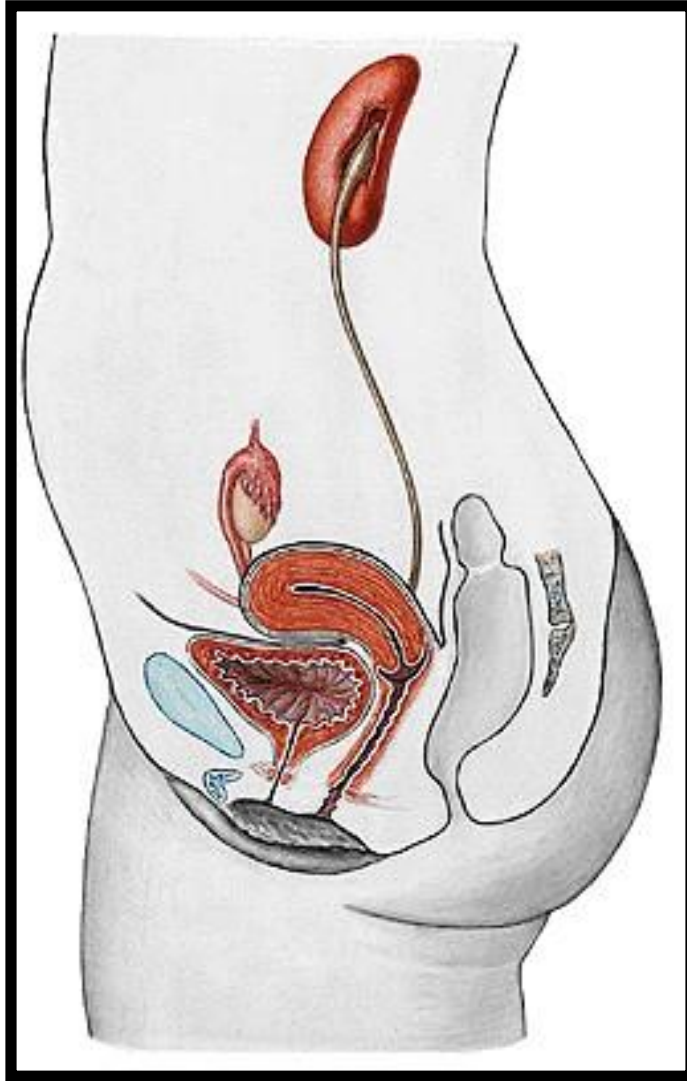
Ovário

Tuba uterina

Útero

Canal vaginal

Bexiga

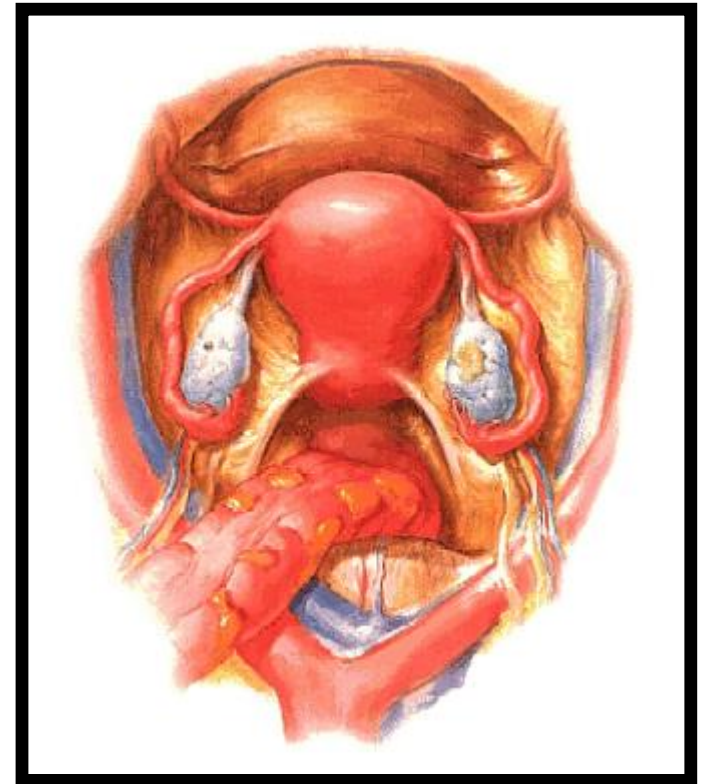
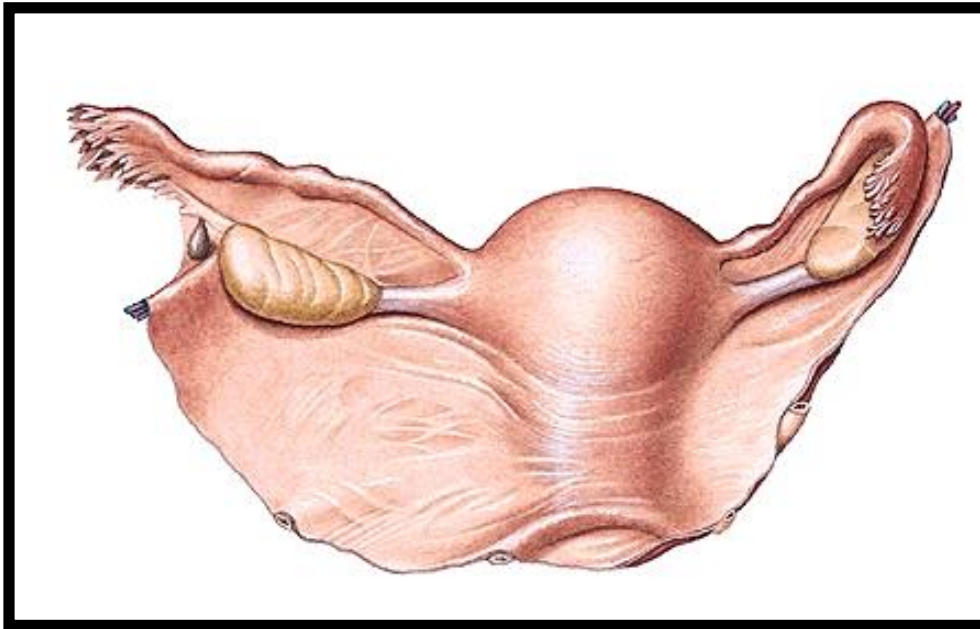


# Ovários

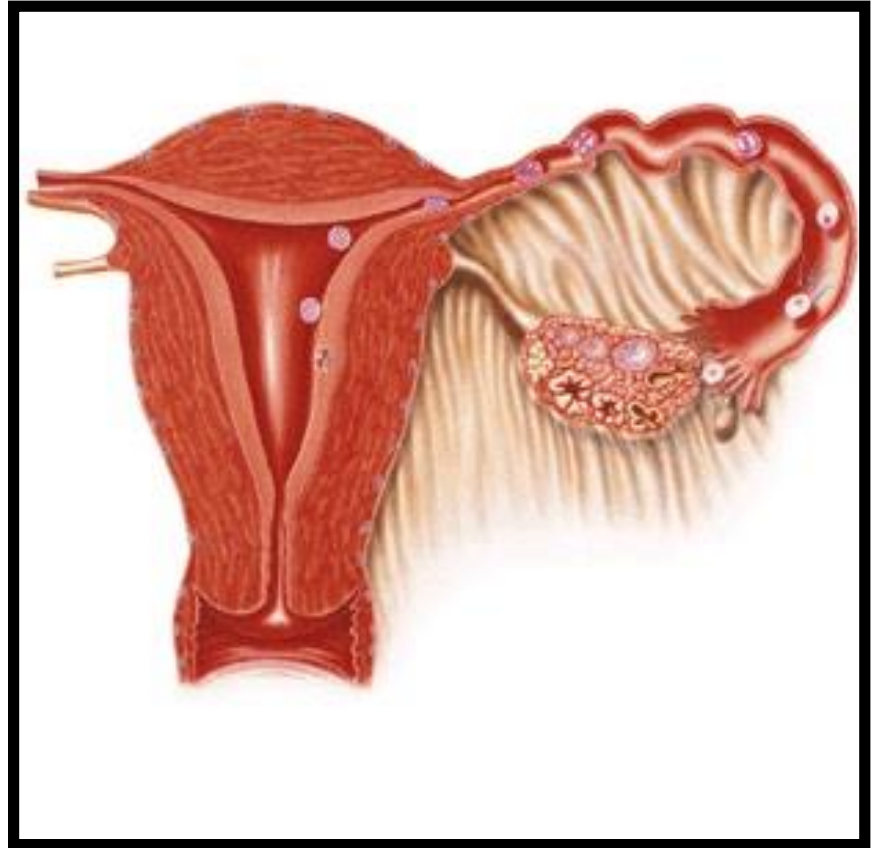
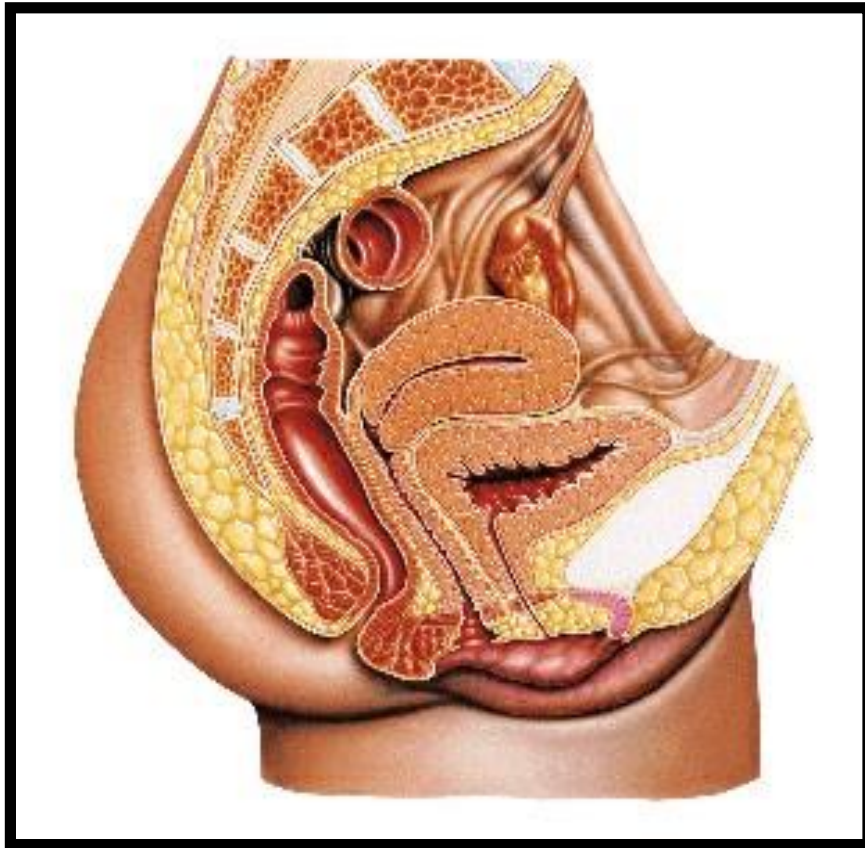
Ovários - estruturas de posicionamento

Ligamento útero-ovárico (próprio)

Ligamento largo



# Ovário - fecundação



# Tuba uterina - divisões

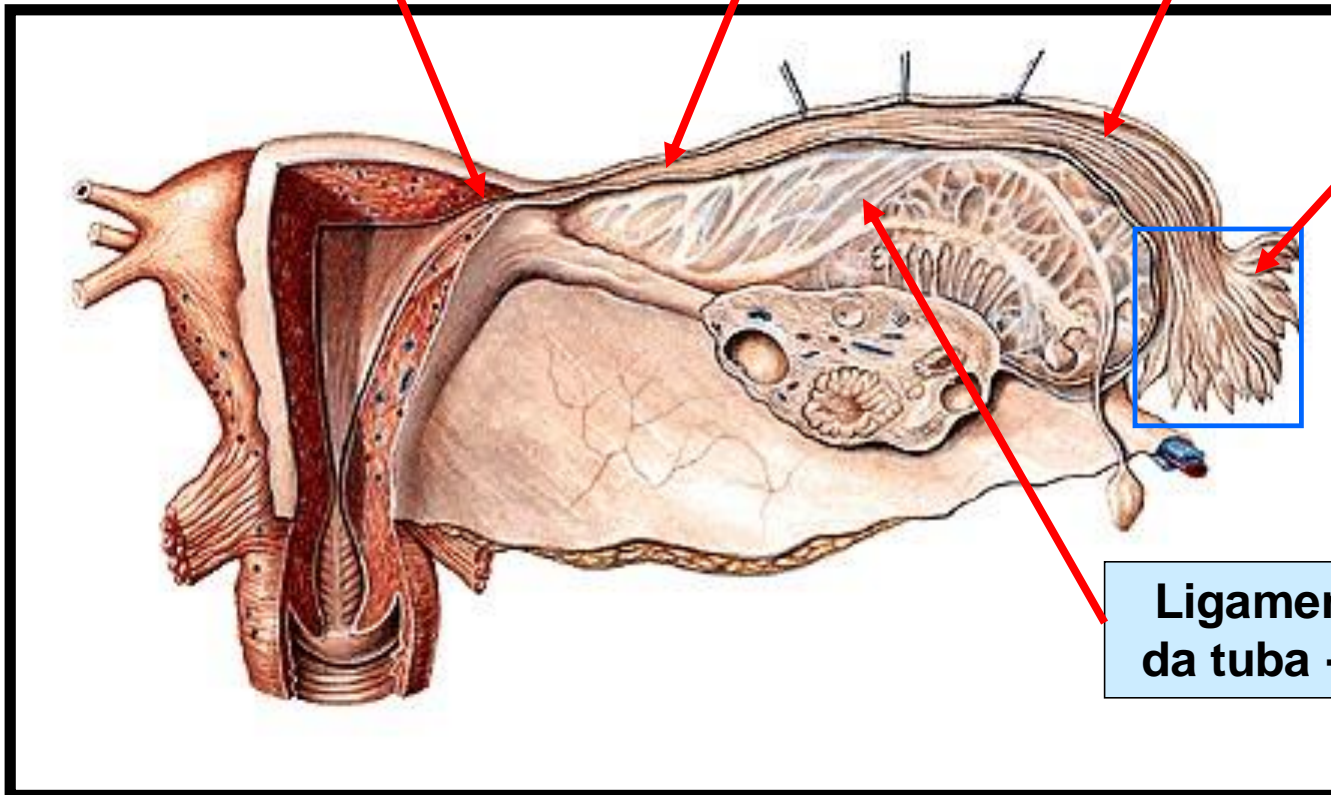
intramural

istmo

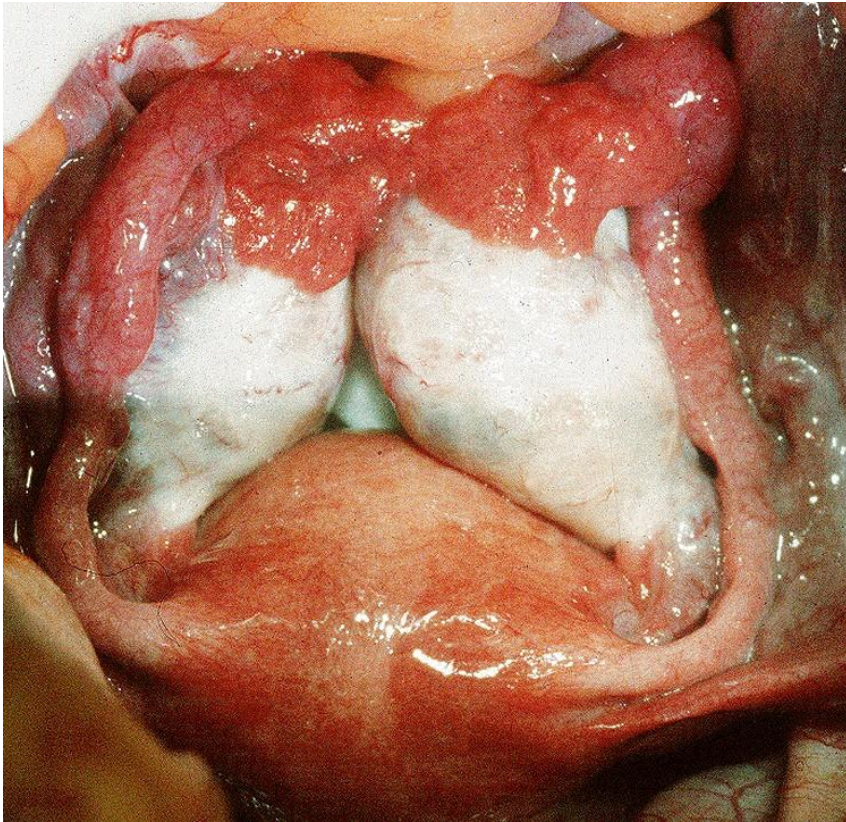
ampola

infundíbulo

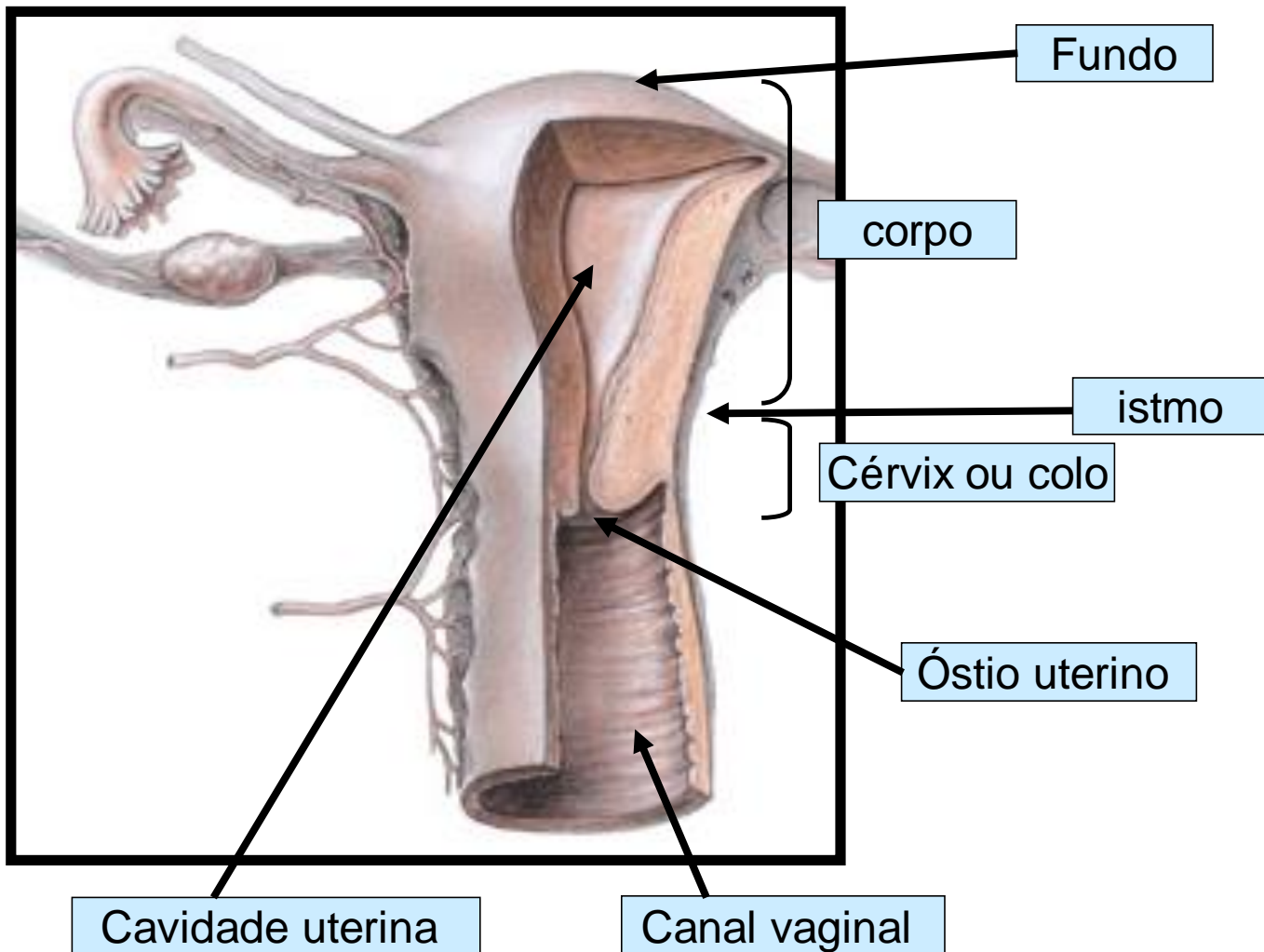
Ligamento de fixação  
da tuba - mesosalpinge



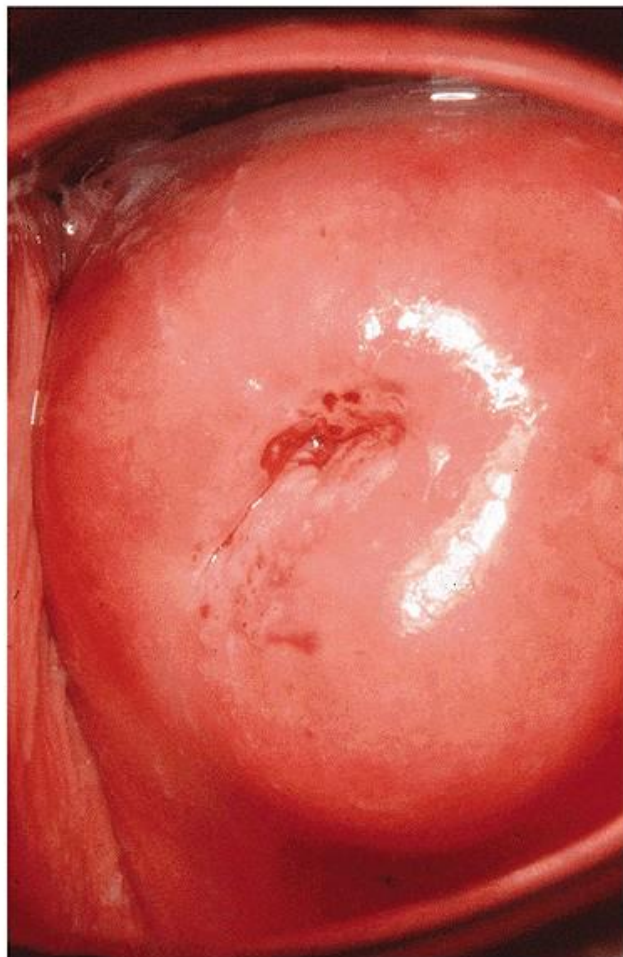
# Endoscopy



# Útero - divisões ou porções



# Óstio uterino



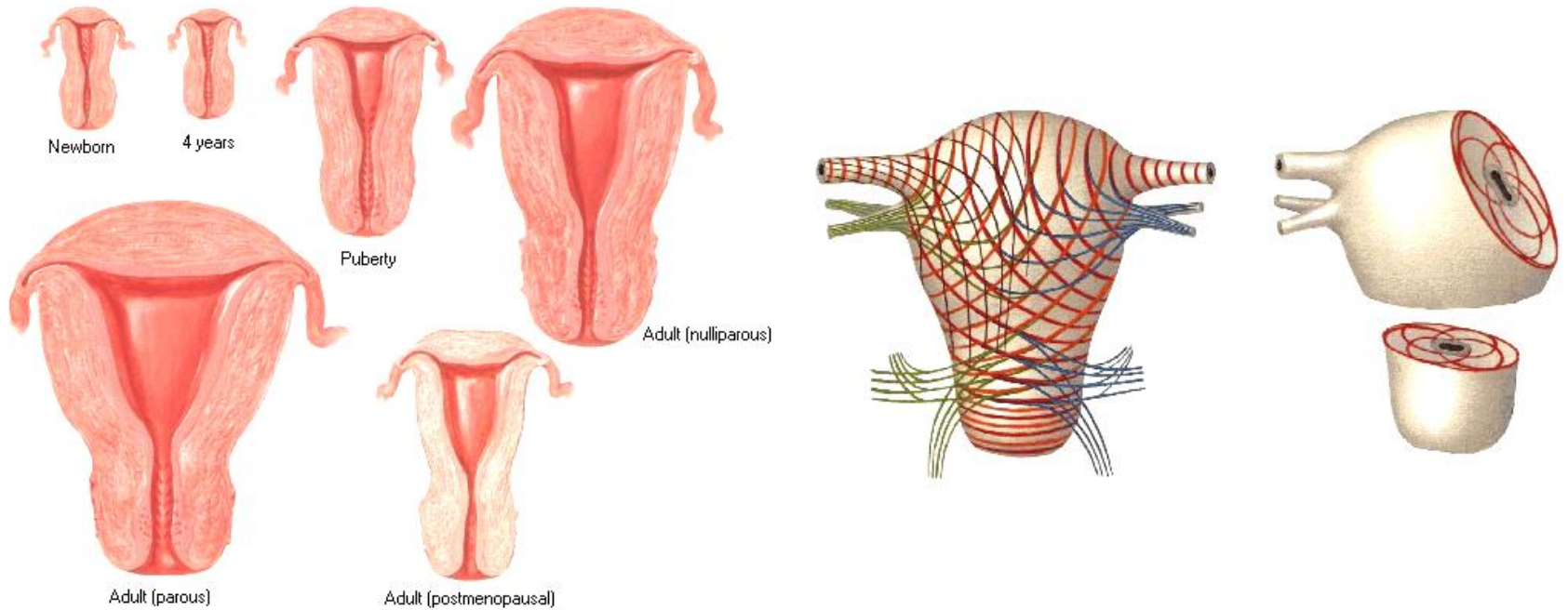
Nulípara

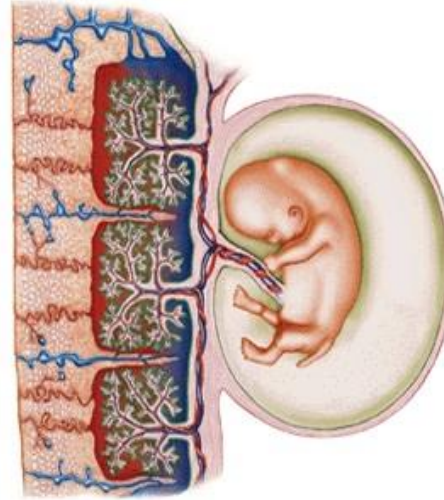
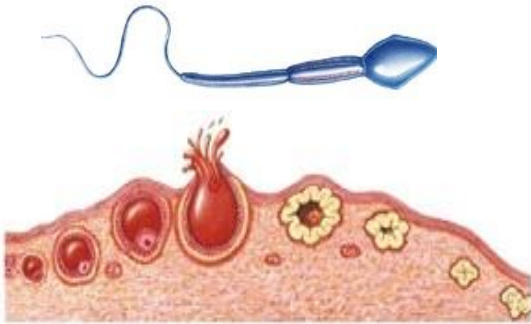


Multípara (02 filhos)

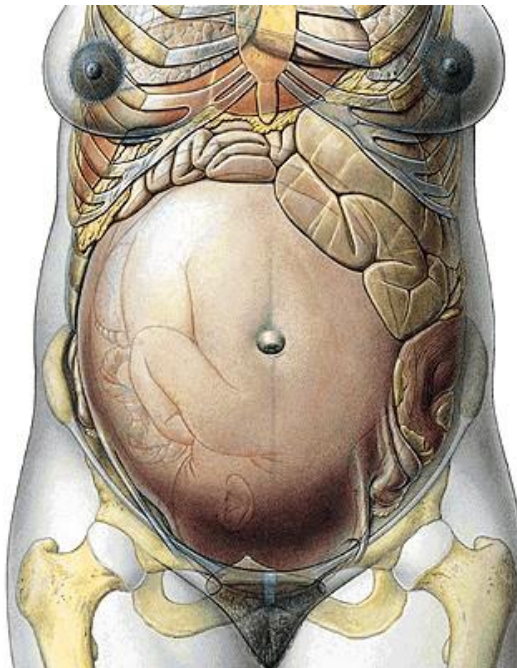
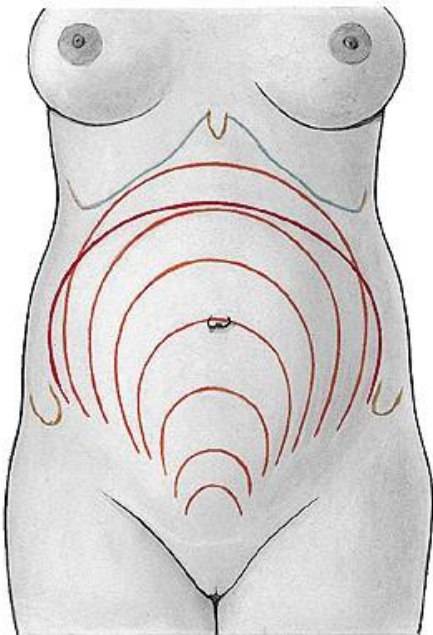


# Útero - arquitetura





REPRODUÇÃO



GRAVIDEZ

# Ultrasonografia

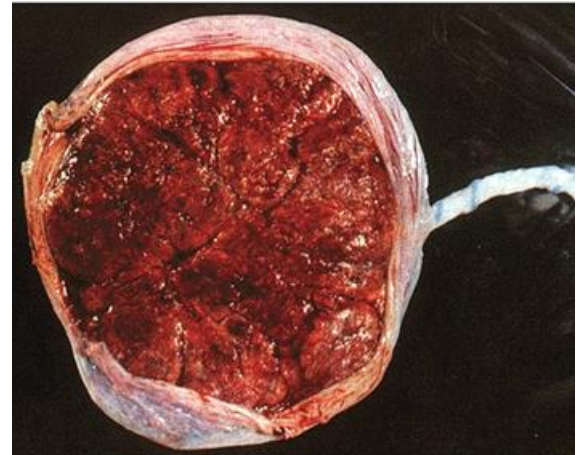
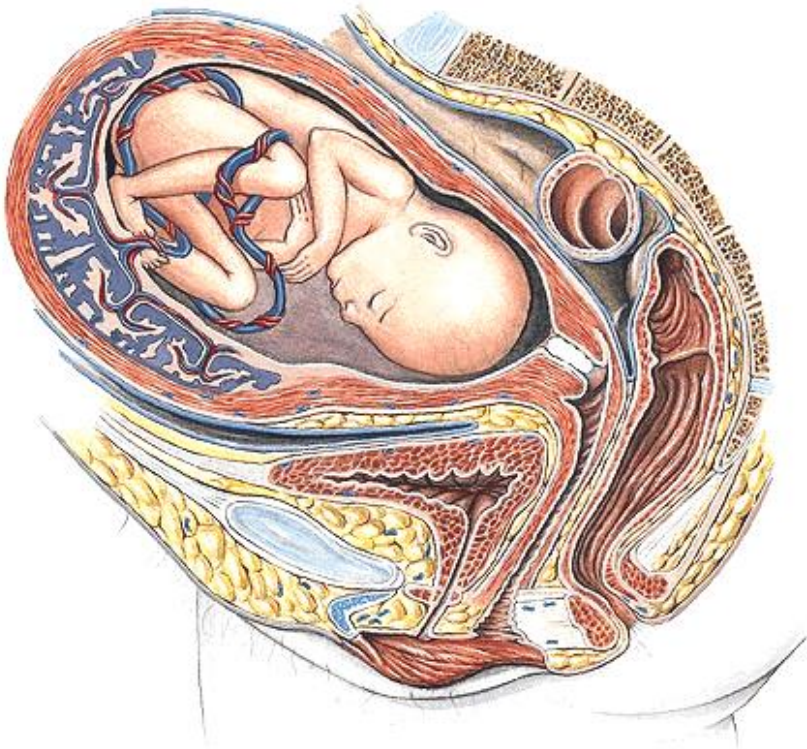


Embrião de 10  
semanas

Feto de 28  
semanas



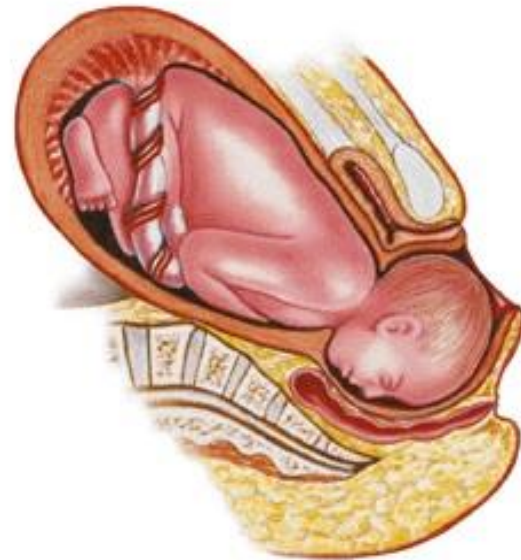
# Gravidez e placenta



# Posicionamento



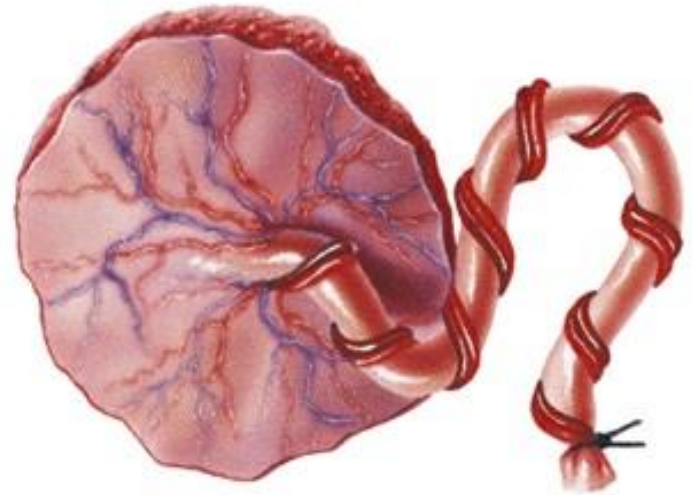
# 1º estágio



# 2º estágio



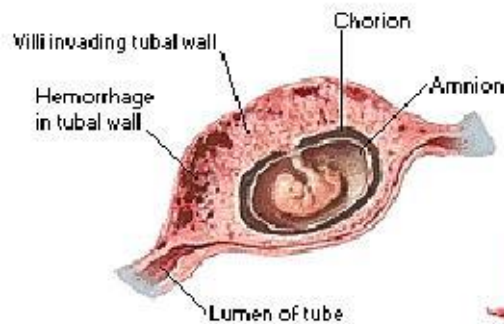
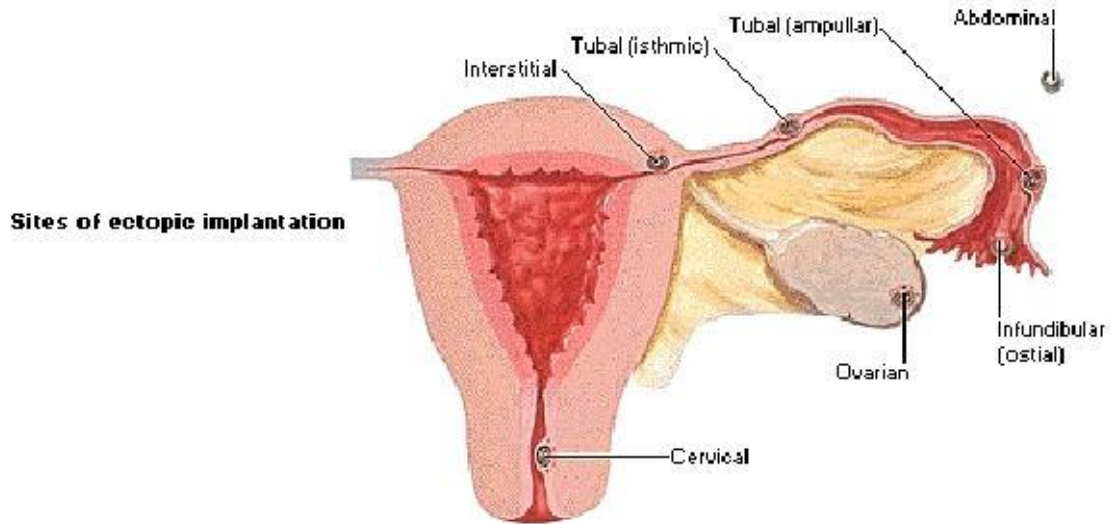
# 3º estágio - Expulsão da placenta



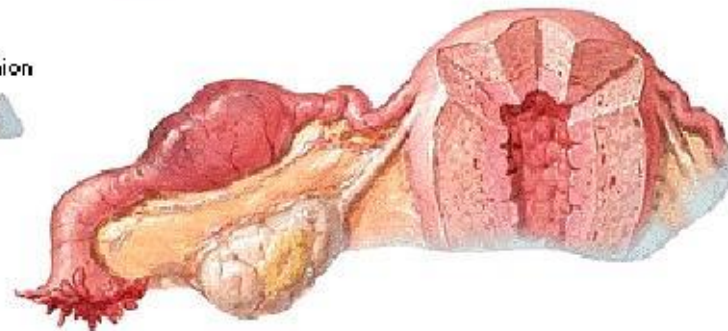


# Anatomía clínica

## Gravidez ectópica



**Section through tubal pregnancy**



**Unruptured tubal pregnancy**

# Sistema Urogenital Feminino

Vísceras externas

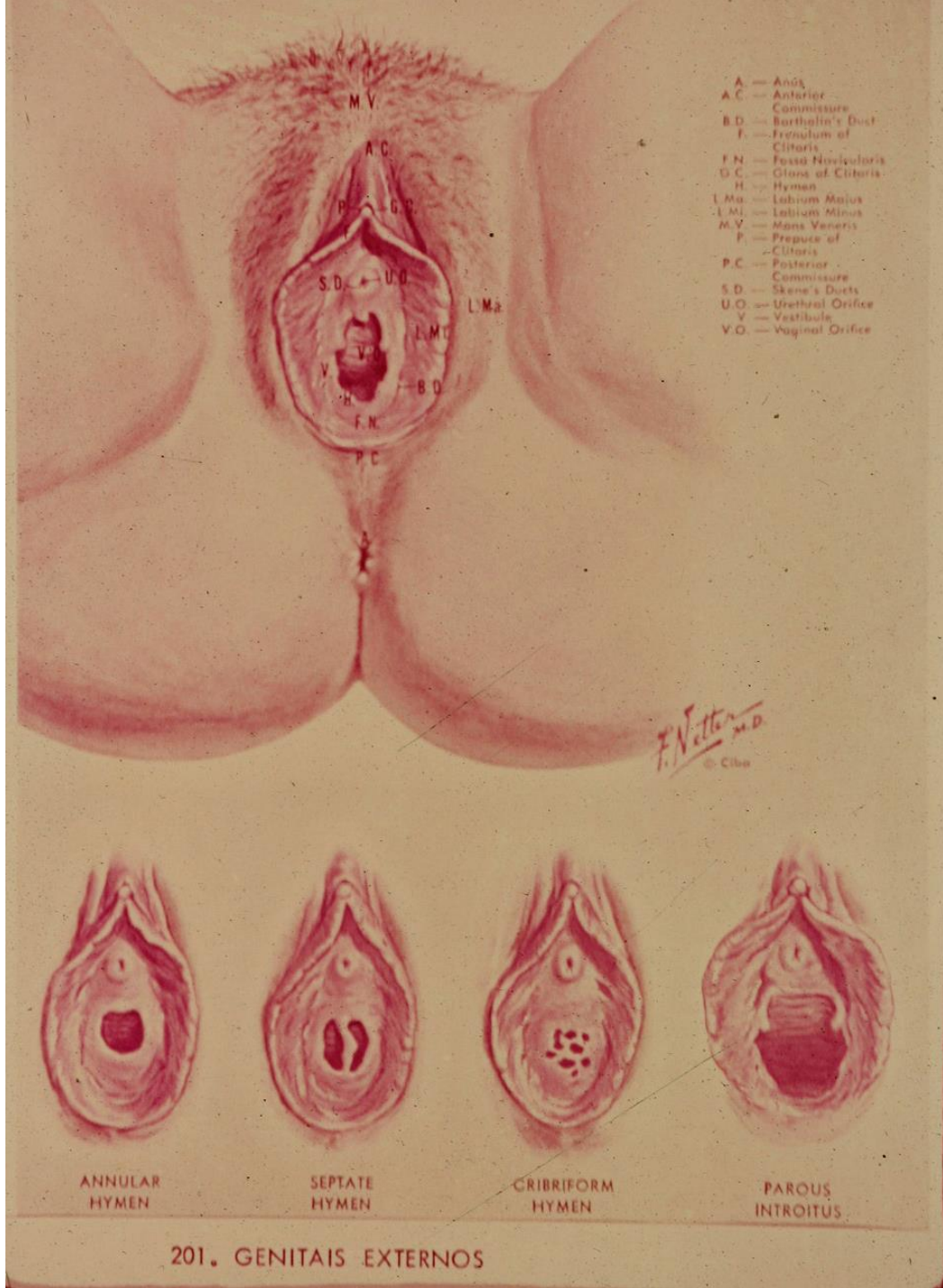
## **GENITÁLIA EXTERNA (VULVA OU PUDENDO)**

- Monte púbico, lábios maiores e menores, vestíbulo da vagina, clitóris, bulbo do vestíbulo e glândulas vestibulares maiores**
- Vestíbulo da vagina - abertura dos óstios: vagina (abertura), uretra e glândulas vestibulares maiores**

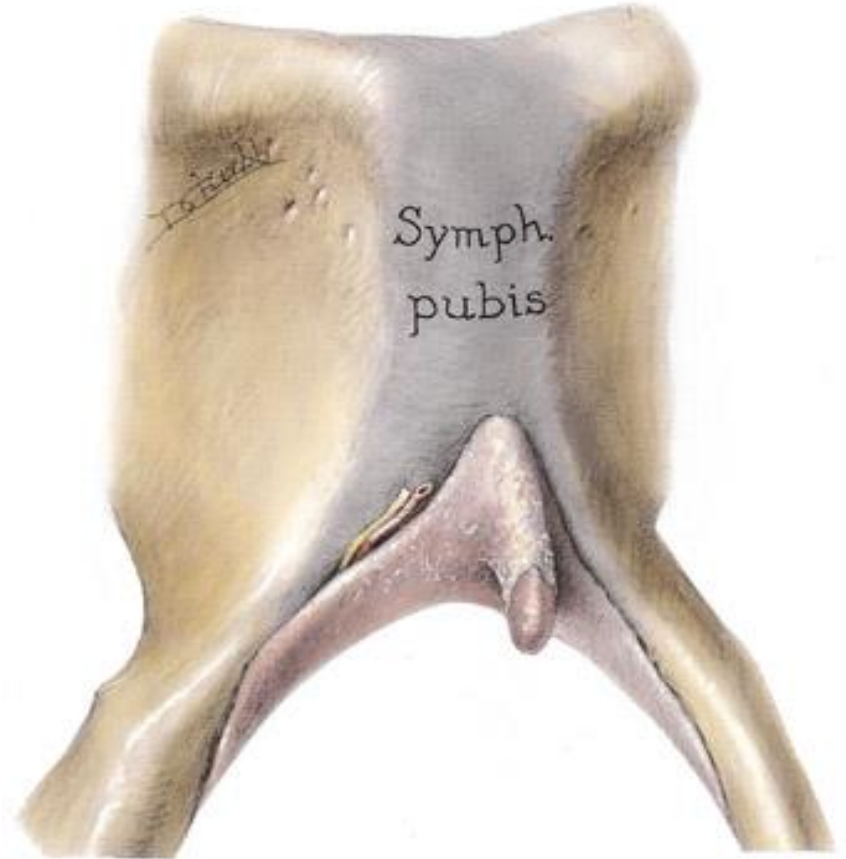
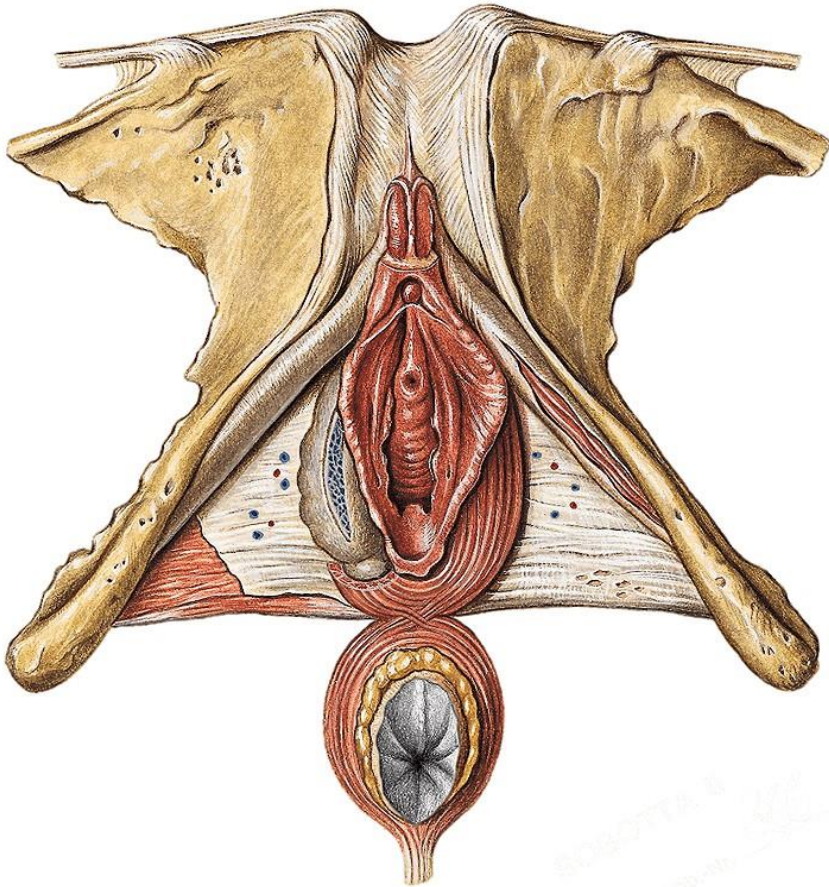
# VULVA OU PUDENDO



# Hímem



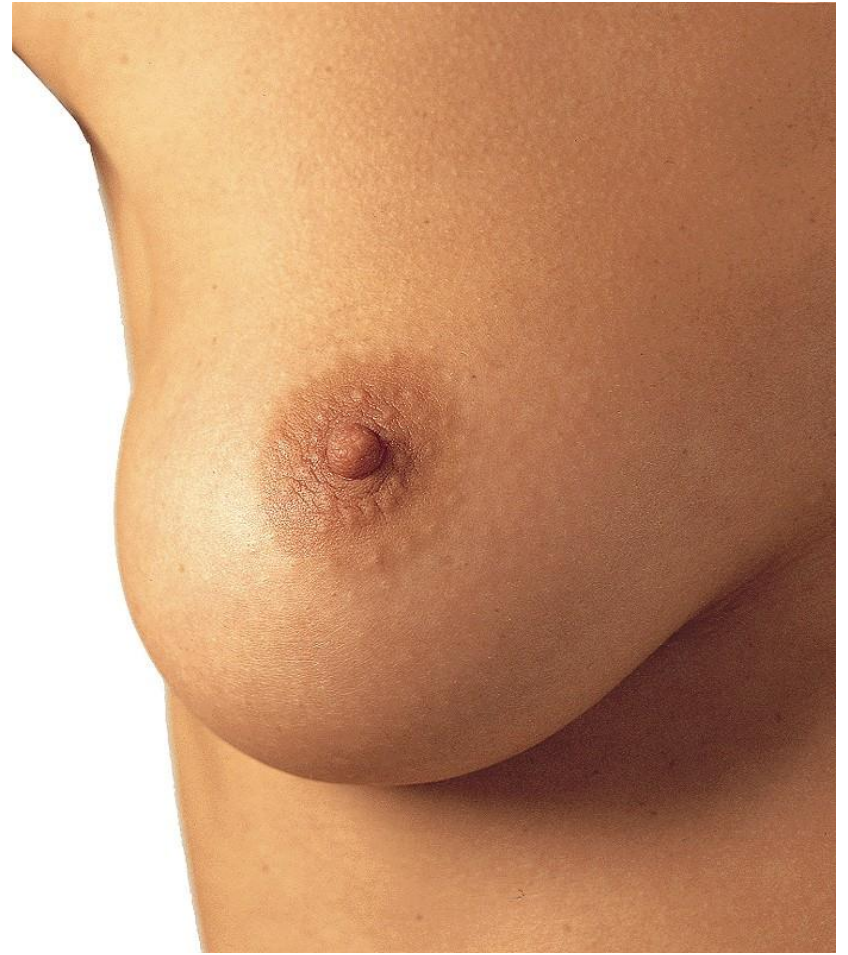
# Clitóris e vestíbulo



# Sistema Urogenital Feminino

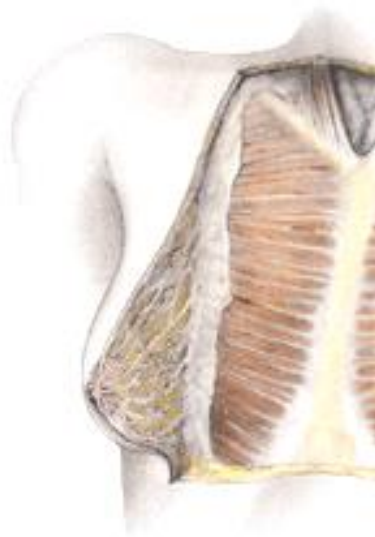
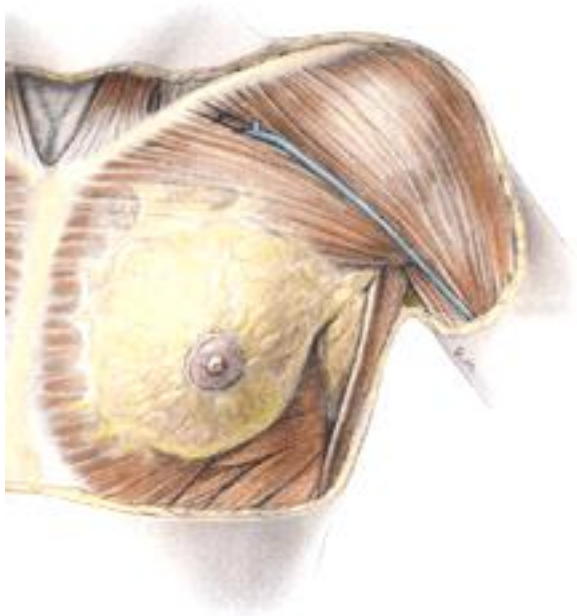
Estudo das mamas

# Mama





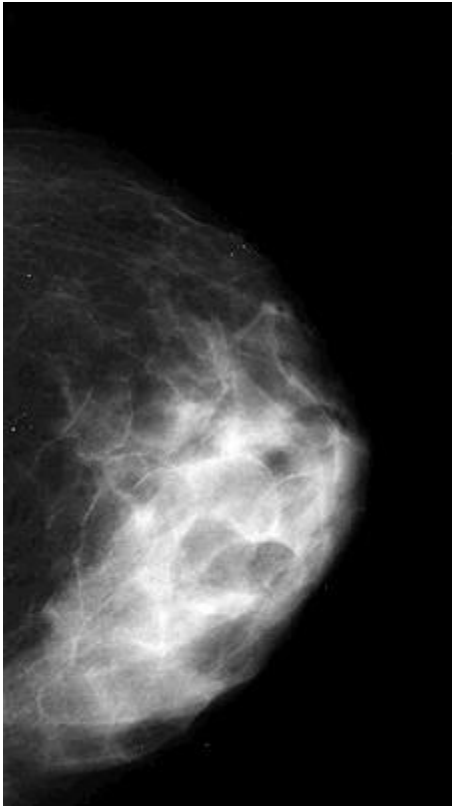
# Localização



# Mamilo e aréola



# Mamografias - Imagens



Courtesy Dr. K. Bukhanov  
University of Toronto  
Toronto, Ontario, Canada



Courtesy Dr. K. Bukhanov  
University of Toronto  
Toronto, Ontario, Canada