

# SCIENTIFIC REPORTS



OPEN

## Evolutionary dynamics of mycorrhizal symbiosis in land plant diversification

Frida A. A. Feijen<sup>1,2</sup>, Rutger A. Vos<sup>3,4</sup>, Jorinde Nuytinck<sup>3</sup> & Vincent S. F. T. Merckx<sup>3,4</sup> 

Mycorrhizal symbiosis between soil fungi and land plants is one of the most widespread and ecologically important mutualisms on earth. It has long been hypothesized that the Glomeromycotina, the mycorrhizal symbionts of the majority of plants, facilitated colonization of land by plants in the Ordovician. This view was recently challenged by the discovery of mycorrhiza-like associations with Mucoromycotina in several early diverging lineages of land plants. Utilizing a large, species-level database of plants' mycorrhiza-like associations and a Bayesian approach to state transition dynamics we here show that the recruitment of Mucoromycotina is the best supported transition from a non-mycorrhizal state. We further found that transitions between different combinations of either or both of Mucoromycotina and Glomeromycotina occur at high rates, and found similar promiscuity among combinations that include either or both of Glomeromycotina and Ascomycota with a nearly fixed association with Basidiomycota. Our results portray an evolutionary scenario of evolution of mycorrhizal symbiosis with a prominent role for Mucoromycotina in the early stages of land plant diversification.

Land plants diverged from aquatic algae in the Neoproterozoic as a lineage that would eventually undergo the ecological transition to terrestrial life<sup>1,2</sup>. This transition – a major turning point in the history of life on earth – reshaped the global climate and the biosphere through an increase in atmospheric oxygen levels, carbon fixation, and biotic chemical weathering of rocks<sup>3,4</sup>. Terrestrial life requires plants to extract nutrients and moisture from the substrate. As roots only evolved after the transition to land<sup>5</sup>, initial plant colonization of the terrestrial environment was likely facilitated through interactions with symbiotic fungi where the latter provided inorganic nutrients and water to the host plant and received carbohydrates in return<sup>5,6</sup>.

Mycorrhizal symbiosis is found in over 90% of extant land plant species, and all major lineages of land plants, except for mosses<sup>7,8</sup>. Land plants form mycorrhiza-like associations with members of three different fungal phyla: Mucoromycota, Basidiomycota, and Ascomycota<sup>9,10</sup>. The great majority of land plants associate with arbuscular mycorrhizal fungi from the Mucoromycota subphylum Glomeromycotina, while other types of symbiotic associations, such as ectomycorrhiza, ericoid mycorrhiza, and orchid mycorrhiza, are formed by fungi of the Basidiomycota or Ascomycota<sup>9</sup>. Fossil evidence suggests that Glomeromycotina have coevolved with land plants for at least 407 Myr, as vesicles, spores, intracellular coils, and arbuscule-like structures resembling extant symbiotic colonizations were found in Rhynie Chert fossils of *Horneophyton lignieri*<sup>11</sup>. Further support for ancient origin of these interactions comes from genomics, as genes involved in the formation of arbuscular mycorrhizal colonizations are homologs and were acquired in a stepwise manner, with potentiation starting as early as the last common ancestor of Charophytes and Embryophytes<sup>12–14</sup>.

This evidence has led to the wide acceptance of the view that Glomeromycotina were the ancestral mycorrhizal symbionts of land plants<sup>15,16</sup>. The ancestral symbiosis is assumed to have been replaced in several plant lineages by other types of symbiotic associations in multiple independent shifts<sup>7,17</sup>. However, the recent discovery that many members of early diverging lineages of land plants, including liverworts, hornworts, and early diverging vascular plants, engage in mycorrhizal symbiosis with the Mucoromycota subphylum Mucoromycotina, challenged this hypothesis and suggests that either Mucoromycotina rather than Glomeromycotina could have

<sup>1</sup>Eawag, Swiss Federal Institute of Aquatic Science and Technology, 8600, Dübendorf, Switzerland. <sup>2</sup>ETH Zürich, Institute of Integrative Biology (IBZ), 8092, Zürich, Switzerland. <sup>3</sup>Naturalis Biodiversity Center, Vondellaan 55, 2332 AA, Leiden, The Netherlands. <sup>4</sup>Institute of Biology Leiden, Leiden University, Sylviusweg 72, 2333 BE, Leiden, The Netherlands. Correspondence and requests for materials should be addressed to V.S.F.T.M. (email: [vincent.merckx@naturalis.nl](mailto:vincent.merckx@naturalis.nl))

facilitated terrestrialisation<sup>16</sup>, or that early land plants formed dual Mucoromycotina–Glomeromycotina partnerships<sup>18–21</sup>. After this discovery, Rhynie Chert fossils were re-evaluated, revealing mycorrhiza-like colonizations resembling both Glomeromycotina and Mucoromycotina<sup>11</sup>. Moreover, mycorrhiza-formation genes from Mucoromycotina-associated liverworts recover the Glomeromycotina-associated phenotype in a transformed mutant of the angiosperm *Medicago truncatula*, which reveals that the genes required for symbiosis have been conserved among liverworts that associate exclusively with Mucoromycotina as well as higher plants that associate exclusively with Glomeromycotina<sup>13,20</sup>.

Given that Ascomycota, Basidiomycota, Glomeromycotina, and Mucoromycotina likely diverged prior to the divergence of land plants<sup>22,23</sup>, it is possible to treat different combinations of symbiotic association with these phyla as categorical character states on the plant phylogeny and analyse transition dynamics between the states in a Bayesian phylogenetic comparative context. Considering the uncertainty of the evolutionary relationships of early Embryophytes<sup>24,25</sup>, we assessed the probability of all possible combinations of mycorrhizal associations for the most recent common ancestor of land plants.

## Results

We obtained a dataset of 732 species of land plants for which the mycorrhizal fungi have been identified with molecular methods. 45 species were added to represent non-mycorrhizal lineages. We used the plant chloroplast DNA markers *psbA*, *rbcL* and *rps4* to infer phylogenetic relationships between these species. Our estimates of phylogeny correspond well with the prevailing understanding of the systematics of the land plants at least so far as the monophyly of major groups and the relative branching order of these groups under the different rooting scenarios are concerned<sup>26,27</sup>.

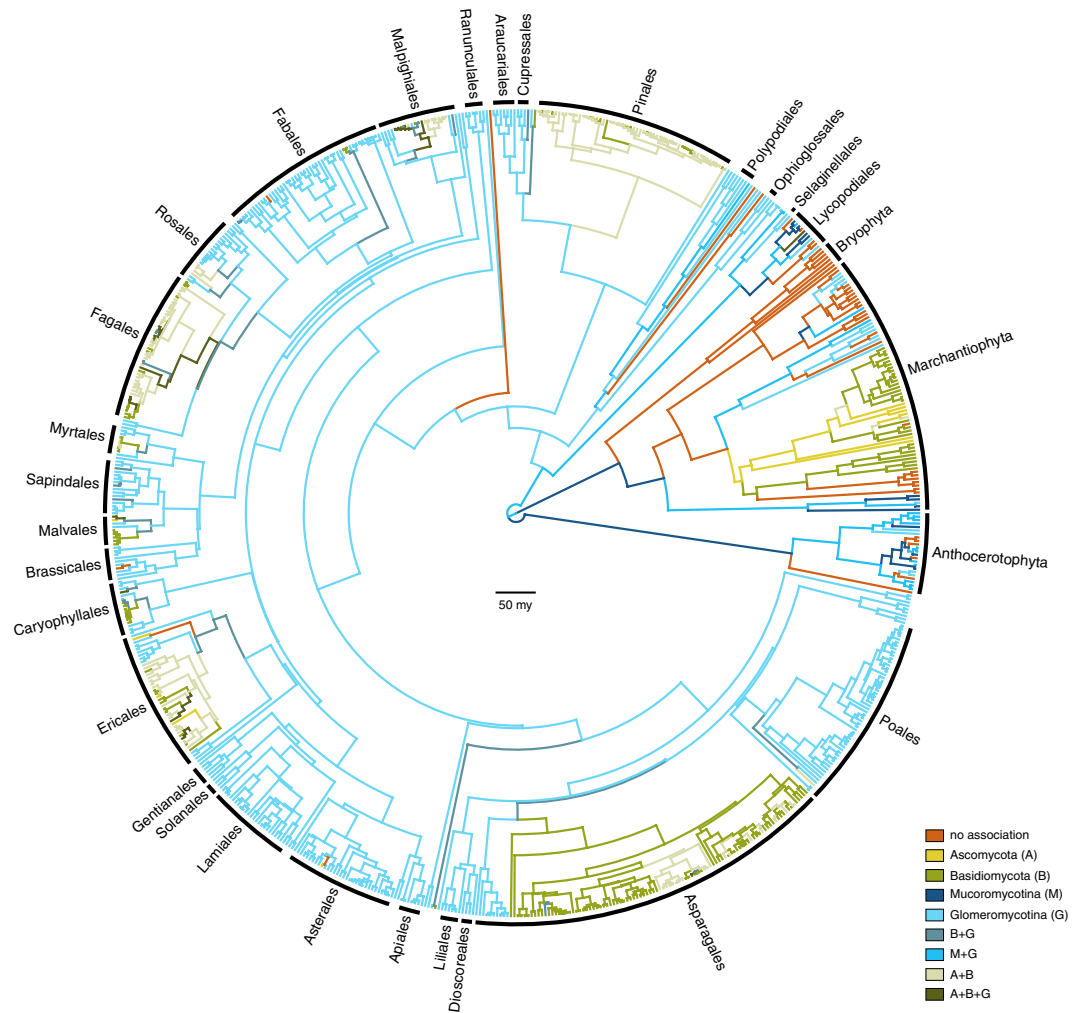
Optimising the observed repertoires of mycorrhizal association as transitioning categorical states on our phylogenetic estimates resulted in a general pattern of phylogenetic conservatism: major plant groups associate quite uniformly with major fungal groups (Fig. 1). Our ancestral state reconstructions recover strong support for the presence of mycorrhiza-like association for the most recent common ancestor of the land plants. However, the particular state for the root was equivocal, showing comparable levels of support for i) an association just with Mucoromycotina, ii) a repertoire comprising both Mucoromycotina and Glomeromycotina; and iii) no mycorrhizal association at all (Figure S1). The relative levels of support, and the inclusion of additionally supported root states, were influenced by different rooting scenarios (Figure S2).

The pattern of transitions among different repertoires of symbiotic association suggests two main paths along which individual associations within a larger repertoire are gained and lost relatively promiscuously (Fig. 2). The first of these paths involves Mucoromycotina and Glomeromycotina: the association with Glomeromycotina is added to, and subtracted from, the association with Mucoromycotina at relatively high instantaneous transition rates. The association with Mucoromycotina within a repertoire that spans both is also lost at relatively high rates, but gained at much lower rates, suggesting that the association with Glomeromycotina is relatively more facultative within this repertoire. The second path includes gains and losses of Ascomycota, and losses of Glomeromycotina (but gains less so), at high rates within repertoires in which the association with Basidiomycota appears more obligate.

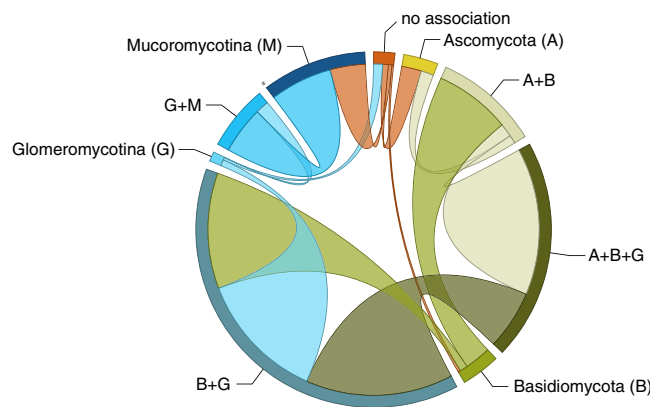
Explicit hypothesis testing to quantify which transition away from a state of no mycorrhizal association is best supported prefers Mucoromycotina under all four rooting scenarios: in three out of four, the Bayes Factor (BF) was larger than 10, interpreted as strong support, in the fourth scenario (hornworts sister to all other land plants) the BF was ~8.35, which is generally interpreted as substantial support<sup>28</sup> (Table S1). Placing the evolution of mycorrhizal associations on a temporal axis in a sliding window analysis (Fig. 3) shows Mucoromycotina and Glomeromycotina dominating early associations, while associations that include Basidiomycota and Ascomycota become more pervasive later in land plant evolution.

## Discussion

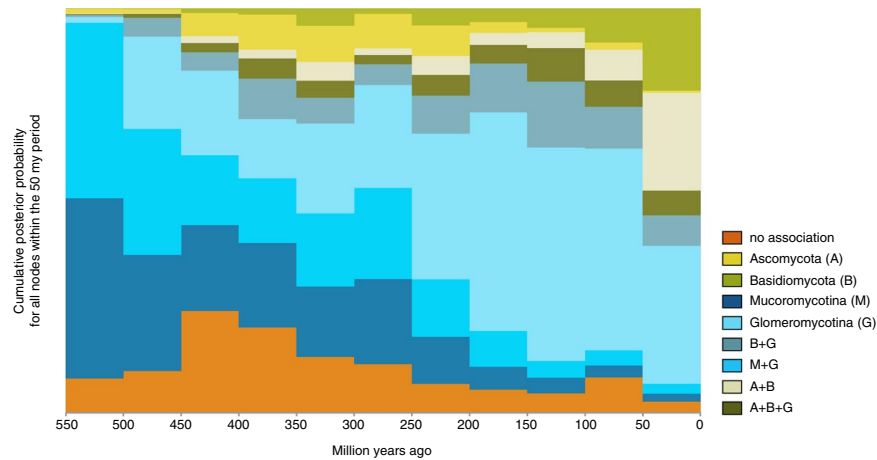
For each evaluated scenario of land plant evolution, our results support the hypothesis that the most recent common ancestor of land plants was involved in symbiotic interactions with fungi. This result is in accordance with evidence from the fossil record<sup>11</sup> and genomics<sup>12–14</sup>. For the small, rootless, leafless plants with rhizoid-based absorbing systems that started colonizing the land, the alliance with fungi is hypothesized to have been essential in overcoming major issues of nutrient and water limitation in the absence of existing soils<sup>29,30</sup>. Our analyses suggest that the fungal associates of these earliest land plants most likely included Mucoromycotina, and not exclusively Glomeromycotina, as commonly assumed<sup>1,31,32</sup>. An exclusive association with Mucoromycotina for the root of the land plants received the highest support of all possible mycorrhizal repertoires, for all hypotheses of the relationships between the main land plant lineages. Furthermore, our hypothesis tests supported Mucoromycotina over Glomeromycotina as the initial gain for the most recent common ancestor of the land plants. However, our reconstructions also suggest that a repertoire comprising both Mucoromycotina and Glomeromycotina cannot be ruled out, and we find high rates for transitions in which Glomeromycotina are gained and lost in combination with Mucoromycotina (Fig. 2), suggesting a versatile scenario for the evolution of association with both groups. Mucoromycotina have been recorded in the rhizoids and roots of extant liverworts<sup>16</sup>, hornworts<sup>18</sup>, lycophytes<sup>21</sup>, ferns<sup>21</sup>, gymnosperms<sup>33,34</sup>, and angiosperms<sup>35</sup>, but within early diverging land plant lineages (except for the liverwort lineage Haplomitriopsida)<sup>16</sup> they were mostly found simultaneously with Glomeromycotina<sup>16,18,21</sup>. The association with both fungal lineages was likely also present in the Devonian fossil plant *Horneophyton ligneri*<sup>11</sup>, and Field *et al.*<sup>19</sup> speculated that the ability to associate with more than one fungal partner was an ancient strategy that allowed the earliest land plants to occupy highly heterogeneous and dynamic environments. However, this plasticity appears to not be maintained: once association with Mucoromycotina is lost, reversals occur at a low rate (Fig. 2) resulting in a predominance of strictly Glomeromycotina associations in extant plants. The scenario presented here is contingent on our current understanding of the early diversification of fungi and plants. Both



**Figure 1.** Evolution of mycorrhiza-like associations in land plants. Chronogram showing the ancestral state reconstructions of mycorrhiza-like associations in land plants ( $n = 732$  species) using a phylogenetic hypothesis in which a clade consisting of liverworts and mosses are the sister group of all other land plant species. Branches are coloured according to the most probable state of their ancestral nodes. Main plant lineages are marked with black labels. Branch lengths represent time in million years. Bar is 50 million years.



**Figure 2.** Transitions of mycorrhiza-like associations in land plant evolution. Frequency of transitions between different repertoires of mycorrhiza-like association as optimised on our phylogeny (Fig. 1). The band size for each state (labelled next to the bands) represents the number of transitions from that state proportional to the total number of reconstructed transitions; and the width of the ribbons is proportional to the numbers of transitions starting from that state.



**Figure 3.** Evolution of mycorrhiza-like associations through time. The proportion of each mycorrhizal state relative to the total number of branches at that particular point in time, sampled at 50 million year intervals on our phylogeny with ancestral state reconstructions (Fig. 1).

Mucoromycotina and Glomeromycotina are part of the monophyletic phylum Mucoromycota<sup>10</sup>, and their divergence has been estimated to predate the colonization of land by plants<sup>23</sup>. However, extant symbiotic species of Mucoromycotina are part of the order Endogonales<sup>10,16,36</sup> and the phylogenetic position of this group – and thus the timing of its origin relative to the emergence of land plants – remains to be investigated. Moreover, a recent molecular clock analysis estimated the living clade of land plants to have emerged in the middle Cambrian – Early Ordovician<sup>2</sup>, which presents the possibility of an interaction between early land plants and the common ancestor of Mucoromycota<sup>23</sup>. Under this alternative scenario, symbioses formed by Mucoromycotina and Glomeromycotina result from a single evolutionary event within fungi, and, consequently, this would imply that other nutritional strategies within Mucoromycota (mostly plant pathogens and decomposers)<sup>10</sup> represent derived states within this group. Under our current understanding of the evolution and nutritional modes of early diverging fungi, this scenario is unlikely<sup>37</sup>.

From the prevalent association with strictly Glomeromycotina, there have been multiple independent evolutionary shifts towards Ascomycota and Basidiomycota, leading to increasingly prevalent reconstruction of these interactions over the course of plant diversification (Fig. 3). Our results suggest that these transitions started with a gain of Basidiomycota, rather than Ascomycota (Fig. 2). Subsequent gains of Ascomycota and losses of Glomeromycotina occur at high rates, leading to various association repertoires that include either or both Ascomycota and Basidiomycota. These repertoires are present in several extant land plant lineages and represent the ectomycorrhizal, orchid mycorrhiza, and ericoid mycorrhizal types<sup>9,17</sup>. The ability to recruit saprotrophic lineages of wood and litter decaying fungi from among Ascomycota and Basidiomycota into novel symbioses was likely instrumental for plant adaptation to various ecological challenges<sup>5</sup>. For example, for Orchidaceae, the most species-rich lineage of non-arbuscular mycorrhizal plants, the transition from associations with Glomeromycotina to Ascomycota and Basidiomycota is linked to niche expansions and radiations, which in synchrony with the development of specialized pollination syndromes has promoted speciation in the largest family of plants on earth<sup>38,39</sup>. Similarly, the independent evolution of ericoid mycorrhiza in Diapensiaceae and Ericaceae, estimated to date back to the Cretaceous<sup>40,41</sup>, is a potential adaptation to nutrient poor, acidic soils<sup>31</sup>. Also, transitions to ectomycorrhiza independently evolved in various gymnosperm (e.g. Pinaceae, *Gnetum*, *Taxus*) and angiosperm lineages (e.g. Nyctaginaceae, Polygonaceae, Myrtaceae, Malvales, Malpighiales, Fabaceae, Fagales; Fig. 1). Parallel to the latter, a shift towards fungi involved in the ectomycorrhizal and ericoid symbiosis has also occurred in liverworts (Fig. 1). Although relatively few plant species – mostly trees and shrubs – are ectomycorrhizal, the worldwide importance of the ectomycorrhizal association is considerable, due to its dominance in temperate and boreal forests, and in tropical rainforests in Southeast Asia<sup>17</sup>. Ectomycorrhizal symbioses likely emerged in semi-arid forests dominated by conifers under tropical to subtropical climates and diversified in angiosperms and conifer forests driven by a change to cooler climate during the Cenozoic<sup>42,43</sup>. Loss of mycorrhizal symbiosis has occurred from all single association states, mostly at relatively low transition rates (Fig. 3). These transitions are explained by plant adaptations to either nutrient-rich or extremely nutrient-poor soils, for which the benefits of the symbiosis do not outweigh its costs<sup>44</sup>. However, transition rates towards the non-mycorrhizal state may have been underestimated here, since several non-mycorrhizal angiosperm lineages (all with a recent evolutionary origin<sup>45</sup>) have not been included. A notable increase in the proportion of non-mycorrhizal lineages around 450–400 mya is caused by the origin of mosses and the diversification of non-mycorrhizal liverworts. Similar to Maherali *et al.*<sup>45</sup> we reconstructed a regain of symbiosis from a non-mycorrhizal ancestor for a few lineages. Because it is not known whether the mycorrhizal symbiosis can be recovered after loss, it is possible that this pathway may not occur in nature.

Our results portray an evolutionary scenario of evolution of mycorrhizal symbiosis with a prominent role for Mucoromycotina in the early stages of land plant diversification. In most plant lineages, Glomeromycotina, the dominant mycorrhizal symbionts of extant land plants, subsequently replaced Mucoromycotina. Later on, several

transitions from Glomeromycotina to various Ascomycota and Basidiomycota lineages have occurred, establishing novel mycorrhizal syndromes, such as orchid, ericoid, and ectomycorrhizas. Our findings demonstrate the importance of Mucoromycotina fungi for our understanding of the early evolution of the mycorrhizal symbiosis. We still know very little about the biology of symbiotic Mucoromycotina<sup>36</sup>, but experimental evidence suggests they form mycorrhizas that are physiologically and functionally different from symbioses with Glomeromycota<sup>20</sup>. Their presence as symbiotic fungi in land plants has been overlooked until recently<sup>16,20</sup>, and it is likely that further screening of land plants will reveal that many more plant taxa are associated with Mucoromycotina.

## Methods

**Data collection.** To compile a dataset of plants and their symbiotic fungi, we searched the NCBI Nucleotide databank for records of Glomeromycotina (at the time of the search ‘Glomeromycota’), Mucoromycotina, Ascomycota and Basidiomycota that had annotations recording the plant host species (Figure S3). Subsequently, for each of these plant host species we conducted a GenBank search and reduced our dataset to all records with an *rbcL* sequence available for the plant host. For the remaining records, we verified mycorrhizal status through literature study and discarded all unconfirmed records from the dataset. We then performed a literature search for plant orders that were not in the dataset as well as for early diverging lineages of land plants. Because it is difficult to discriminate among symbioses formed by Glomeromycotina and Mucoromycotina by morphological observations, we only included mycorrhizal associations based on DNA identification for these fungi. For lycopods, polypod ferns, hornworts and liverworts, species that were not found to harbour mycorrhiza-like associations during literature surveys were classified as non-mycorrhizal, although this could be a sampling artefact for some species. Furthermore, mosses and *Nymphaea alba* were included to represent major non-mycorrhizal lineages. The final dataset covers 732 plant species distributed over 78 plant orders. The dataset includes 24 hornworts (11% of extant species diversity<sup>46</sup>), 7 mosses (0.06%)<sup>46</sup>, 76 liverworts (0.84%)<sup>46</sup>, 518 angiosperms (0.18%)<sup>46</sup>, 73 gymnosperms (6.77%)<sup>46</sup>, 16 lycopods (1.24%)<sup>46</sup>, and 18 polypod ferns (0.17%)<sup>46</sup>. For these plants species, we found associations with 150 Ascomycota, 305 Basidiomycota, 385 Glomeromycotina, 28 Mucoromycotina and 45 non-mycorrhizal species (Table S2).

DNA sequence data of the plants, including members of the mosses, were obtained from GenBank to reconstruct phylogenetic relationships. For liverworts, hornworts, polypod ferns, and lycopods, we added several species to the dataset to increase taxon sampling, resulting in a total of 759 species for phylogenetic analysis. For 146 species, full or partial chloroplast genomes were available, which we used to extract sequences for *psbA*, *rbcL* and *rps4*. For other species, *rps4* and *psbA* sequences were downloaded, where possible, to supplement the *rbcL* dataset. Accession numbers are listed in the supplementary data (Table S3).

**Phylogenetic analysis and divergence dating.** For each marker, we aligned the sequences with MAFFT v.7<sup>47</sup> using the FFT-NS-i Iterative refinement method, and then selected the substitution model with jModel-Test 2.1.10<sup>48,49</sup>. For each marker, 3 substitution schemes were tested on a neighbor-joining topology, including models with unequal base frequencies, rate heterogeneity, and a proportion of invariant sites. The GTR + I +  $\gamma$  model was selected for all partitions using the AIC. We performed divergence dating with BEAST2 v2.3.2<sup>50</sup> using four fossil calibration points and one age estimate from literature for the crown node of liverworts to date the phylogeny. We selected a uniform distribution for each of the calibration points using the minimum and maximum estimates for these nodes from literature (Table S4). We chose a Yule prior with a uniform birth rate for the analysis, a lognormal relaxed clock model, and estimated the clock rate. We applied the GTR substitution model with a Gamma category count of 4 and estimated shape parameter value of 1.0. The proportion of invariant sites was estimated (initial value 0.01) and the mean substitution rate fixed. We selected an exponential distribution for the prior on the mean substitution rate. To test the effect of different phylogenetic hypotheses<sup>24,27,51</sup> for the deep-time relationships of land plants on ancestral state reconstruction, we reconstructed four phylogenetic hypotheses under the following constraints: (1) hornworts sister to all other land plants, with liverworts and mosses in a monophyletic group (‘ABasal’); (2) liverworts and mosses monophyletic and sister to the other land plants (‘ATxMB’); (3) liverworts, mosses, and hornworts monophyletic and sister to the rest of the land plants (‘TBasal’); and (4) liverworts sister to the rest of the land plants (‘MBasal’; Figure S1). The first three hypotheses have recently been proposed as the best-supported explanations using a large transcriptomic dataset<sup>27</sup>. The fourth hypothesis has been traditionally regarded as the most accurate representation of early land plant diversification (e.g. Field *et al.*<sup>19</sup>). During the MCMC analyses, trace files were updated every 1000 generations, and trees sampled every 10,000 generations, until the effective sample size of major traced parameters exceeded 200 (and all others exceeded 100) using a burn-in of  $100 \times 10^6$  generations. We thus terminated the runs after, respectively, 374,735,000 generations for ABasal; 354,497,000 generations for ATxMB; 345,720,000 for MBasal; and 374,254,000 for TBasal. We then constructed the maximum clade credibility tree using Tree Annotator v2.2.1.

**Comparative analysis and hypothesis tests.** In our analysis we assume that the four major fungal groups of which members participate in symbiotic associations were already in existence prior to the diversification of land plants<sup>23</sup>. Therefore, we treat each distinct repertoire of associations that land plants form with members of these groups as a discrete state whose evolutionary transition dynamics we modelled subsequent to two additional assumptions. First, because there are qualitative differences between the types of symbiotic associations that are formed with some of the different fungal groups (e.g. intracellular versus ectomycorrhizal association), we assumed that the evolutionary adaptations required to enable such associations are not gained (or lost) instantaneously. Hence, we disallowed state shifts that implied multiple, simultaneous gains and losses such that, for example, a change from a state representing a repertoire confined to Glomeromycotina to one confined to Mucoromycotina has to pass through an intermediate state where the repertoire is broadened to include both groups. Second, because the respective adaptations that enable different types of mycorrhiza-like association are likely subject to evolutionary

trade-offs such that repertoires of associations cannot expand infinitely we limited any intermediate states to those we observe in nature. For example, simultaneous association with both Glomeromycotina and Mucoromycotina does occur in our dataset of extant taxa, but complete generalism that includes all fungal groups in a single repertoire does not, which is why we allowed the former, but not the latter, as possible ancestral states.

A convenient side effect of these assumptions was that this limited the number of free parameters in the state transition ( $Q$ ) matrix, which otherwise would have undergone a combinatorial explosion had we included all possible permutations in the repertoires of mycorrhiza-like association as distinct states, which would have impeded convergence in our analyses. To mitigate such proliferation of potentially unneeded, free parameters further, we performed our analyses using Reversible-Jump MCMC, as implemented in BayesTraits's 'multistate' analysis mode. We ran each of our analyses in triplicate for  $10^6$  generations, as initial experimentation had demonstrated reasonable convergence in our data under these settings. In cases where we required estimates of marginal likelihoods, i.e. for hypothesis testing by Bayes factor analysis, we approximated these using a stepping stone sampler that we ran for 100 stones, with 200,000 iterations per stone.

Using this approach, we reconstructed the ancestral states for the four different rootings of our phylogeny. However, although such analyses result in estimates for the posterior distribution of states at any given node (such as the root), they do not necessarily provide the false certainty on which to base a single, unambiguous scenario for the order in which symbiotic associations are acquired, especially not when multiple states are reconstructed with similarly large posterior probabilities at deep nodes (as was the case). Given the number of fungal groups and the differences and similarities among these with respect to the types of mycorrhizal associations they participate in, we expected there to be distinct paths along which repertoires of association have evolved. Interrogation and visualisation of the  $Q$  matrix showed that, broadly, two such paths appear to exist: one where various permutations of association with Glomeromycotina and Mucoromycotina are gained and lost, and another that traverses Ascomycota, Basidiomycota in addition to Glomeromycotina. However, which of these paths was taken first was not yet evident.

We therefore constructed explicit hypothesis tests to distinguish between various plausible scenarios. To do so, in addition to the assumptions affecting the  $Q$  matrix outlined above, we further constrained our analyses to require the absence of any mycorrhizal association on the root node, and then tested which initial gain was best supported by the data. To quantify this, we estimated the marginal likelihood of the model where the root is constrained to have no association but without any additional constraints on the order in which subsequent associations are acquired (beyond the general assumptions already discussed), and compared this with models where, respectively, each of the initial gains of a single fungal group is disallowed. The logic here is that disallowing the initial shift that best fits the data will result in the marginal likelihood that differs most significantly from the less-constrained model.

Lastly, to place the expansion of repertoires of symbiotic association on a temporal axis, we placed the ancestral state reconstructions for the scenario where the root node has no mycorrhizal association in bins of 50 Myr to visualise these in a states-through-time plot (Fig. 3). All data and scripts are available (<https://doi.org/10.5281/zenodo.1037586>).

**Data availability.** The datasets generated during and/or analysed during the current study are available in the GitHub repository, <https://doi.org/10.5281/zenodo.1037586>.

## References

- Delwiche, C. F. & Cooper, E. D. The evolutionary origin of a terrestrial flora. *Curr. Biol.* **25**, R899–R910 (2015).
- Morris, J. L. *et al.* The timescale of early land plant evolution. *Proc. Natl. Acad. Sci. USA* early view, <https://doi.org/10.1073/pnas.1719588115> (2018).
- Selosse, M.-A., Strullu-Derrien, C., Martin, F. M., Kamoun, S. & Kenrick, P. Plants, fungi and oomycetes: a 400-million year affair that shapes the biosphere. *New Phytol.* **206**, 501–506 (2015).
- Lenton, T. M., Crouch, M., Johnson, M., Pires, N. & Dolan, L. First plants cooled the Ordovician. *Nat. Geosci.* **5**, 86–89 (2012).
- Brundrett, M. C. Coevolution of roots and mycorrhizas of land plants. *New Phytol.* **154**, 275–304 (2002).
- Pirozynski, K. A. & Malloch, D. W. The origin of land plants: A matter of mycotrophism. *BioSystems* **6**, 153–164 (1975).
- Wang, B. & Qiu, Y. L. Phylogenetic distribution and evolution of mycorrhizas in land plants. *Mycorrhiza* **16**, 299–363 (2006).
- Pressel, S., Bidartondo, M. I., Ligrone, R. & Duckett, J. G. Fungal symbioses in bryophytes: New insights in the Twenty First Century. *Natural History* **253**, 238–253 (2010).
- van der Heijden, M. G. A., Martin, F. M., Selosse, M.-A. & Sanders, I. R. Mycorrhizal ecology and evolution: the past, the present, and the future. *New Phytol.* **205**, 1406–1423 (2015).
- Spatafora, J. W. *et al.* A phylum-level phylogenetic classification of zygomycete fungi based on genome-scale data. *Mycologia* **108**, 1028–1046 (2016).
- Strullu-Derrien, C. *et al.* Fungal associations in Horneophyton ligneri from the Rhynie Chert (c. 407 million year old) closely resemble those in extant lower land plants: Novel insights into ancestral plant-fungus symbioses. *New Phytol.* **203**, 964–979 (2014).
- Karandashov, V., Nagy, R., Wegmüller, S., Amrhein, N. & Bucher, M. Evolutionary conservation of a phosphate transporter in the arbuscular mycorrhizal symbiosis. *Proc. Natl. Acad. Sci. USA* **101**, 6285–90 (2004).
- Wang, B. *et al.* Presence of three mycorrhizal genes in the common ancestor of land plants suggests a key role of mycorrhizas in the colonization of land by plants. *New Phytol.* **186**, 514–525 (2010).
- Delaux, P.-M. *et al.* Algal ancestor of land plants was preadapted for symbiosis. *Proc. Natl. Acad. Sci.* **112**, 13390–13395 (2015).
- Ligrone, R. *et al.* Glomeromycotean associations in liverworts: A molecular, cellular, and taxonomic analysis. *Am. J. Bot.* **94**, 1756–1777 (2007).
- Bidartondo, M. I. *et al.* The dawn of symbiosis between plants and fungi. *Biol. Lett.* **7**, 574–577 (2011).
- Brundrett, M. C. & Tedersoo, L. Evolutionary history of mycorrhizal symbioses and global host plant diversity. *New Phytol.* early view <https://doi.org/10.1111/nph.14976> (2018).
- Desirò, A., Duckett, J. G., Pressel, S., Villarreal, J. C. & Bidartondo, M. I. Fungal symbioses in hornworts: a chequered history. *Proc. R. Soc. London B Biol. Sci.* **280**, 20130207 (2013).
- Field, K. J., Pressel, S., Duckett, J. G., Rimington, W. R. & Bidartondo, M. I. Symbiotic options for the conquest of land. *Trends Ecol. Evol.* **30**, 477–486 (2015a).
- Field, K. J. *et al.* First evidence of mutualism between ancient plant lineages (Haplomitriopsida liverworts) and Mucoromycotina fungi and its response to simulated Palaeozoic changes in atmospheric CO<sub>2</sub>. *New Phytol.* **205**, 743–756 (2015).
- Rimington, W., Pressel, S., Duckett, J. & Bidartondo, M. I. Fungal associations of basal vascular plants: reopening a closed book? *New Phytol.* **205**, 1394–1398 (2015).

22. Rubinstein, C. V., Gerrienne, P., de la Puente, G. S., Astini, R. A. & Steemans, P. Early Middle Ordovician evidence for land plants in Argentina (eastern Gondwana). *New Phytol.* **188**, 365–369 (2010).
23. Chang, Y. *et al.* Phylogenomic analyses indicate that early fungi evolved digesting cell walls of algal ancestors of land plants. *Genome Biol. Evol.* **7**, 1590–1601 (2015).
24. Cox, C. J., Li, B., Foster, P. G., Embley, T. M. & Civan, P. Conflicting Phylogenies for Early Land Plants are Caused by Composition Biases among Synonymous Substitutions. *Syst. Biol.* **63**, 272–279 (2014).
25. Wickett, N. J. *et al.* Phylotranscriptomic analysis of the origin and early diversification of land plants. *Proc. Natl. Acad. Sci.* **111**, E4859–E4868 (2014).
26. Ruhfel, B. R., Gitzendanner, M. A., Soltis, P. S., Soltis, D. E. & Burleigh, J. G. From algae to angiosperms—inferring the phylogeny of green plants (Viridiplantae) from 360 plastid genomes. *BMC Evol. Biol.* **14**, 23 (2014).
27. Puttick, M. N. *et al.* The interrelationships of land plants and the nature of the ancestral embryophyte. *Current Biol.* **28**, 733–745 (2018).
28. Kass, R. E. & Raftery, A. E. Bayes factors. *J. Am. Stat. Assoc.* **90**, 773–795 (1995).
29. Kenrick, P. & Crane, P. R. The origin and early evolution of plants on land. *Nature* **389**, 33–39 (1997).
30. Kenrick, P. & Strullu-Derrien, C. The origin and early evolution of roots. *Plant Physiol.* **166**, 570–580 (2014).
31. Parniske, M. Arbuscular mycorrhiza: the mother of plant root endosymbioses. *Nat. Rev. Micro.* **6**, 763–775 (2008).
32. Smith, S. E. & Read, D. J. *Mycorrhizal symbiosis*, 3rd edn. London, UK: Academic Press (2008)
33. Tedersoo, L. & Smith, M. E. Lineages of ectomycorrhizal fungi revisited: foraging strategies and novel lineages revealed by sequences from belowground. *Fungal Biol. Rev.* **27**, 83–99 (2013).
34. Yamamoto, K., Endo, N., Degawa, Y., Fukuda, M. & Yamada, A. First detection of *Endogone* ectomycorrhizas in natural oak forests. *Mycorrhiza* **27**, 295–301 (2017).
35. Orchard, S. *et al.* Fine endophytes (*Glomus tenue*) are related to Mucoromycotina, not Glomeromycota. *New Phytol.* **213**, 481–486 (2017).
36. Desirò, A. *et al.* Multigene phylogeny of Endogonales, an early diverging lineage of fungi associated with plants. *IMA Fungus* **8**, 245–257 (2017).
37. Berbie, M. L., James, T. & Strullu-Derrien, C. Early diverging Fungi: diversity and impact at the dawn of terrestrial life. *Annu. Rev. Microbiol.* **71**, 41–60 (2017).
38. Ogura-Tsujita, Y., Gebauer, G., Hashimoto, T., Umata, H. & Yukawa, T. Evidence for novel and specialized mycorrhizal parasitism: the orchid *Gastrodia confusa* gains carbon from saprotrophic *Mycena*. *Proc. Biol. Sci.* **276**, 761–767 (2009).
39. Yukawa, T., Ogura-Tsujita, Y., Shefferson, R., Yokoyama, J. & Ogura-Tsujita, Y. Mycorrhizal diversity in *Apostasia* (Orchidaceae) indicates the origin and evolution of orchid mycorrhiza. *Amer. J. Bot.* **96**, 1997–2009 (2009).
40. Cullings, K. Single phylogenetic origin of ericoid mycorrhizae within the Ericaceae. *Can. J. Bot.* **74**, 1896–1909 (1996).
41. Schwery, O. *et al.* As old as the mountains: the radiations of the Ericaceae. *New Phytol.* **207**, 355–367 (2015).
42. Matheny, P. B. *et al.* Out of the Palaeotropics? Historical biogeography and diversification of the cosmopolitan ectomycorrhizal mushroom family Inocybaceae. *J. Biogeograph.* **36**, 577–792 (2009).
43. Looney, B. P., Ryberg, M., Hampe, F., Sánchez-García, M. & Matheny, P. B. Into and out of the tropics: global diversification patterns in a hyperdiverse clade of ectomycorrhizal fungi. *Mol. Ecol.* **25**, 630–647 (2016).
44. Lambers, H. & Teste, F. P. Interactions between arbuscular mycorrhizal and non-mycorrhizal plants: do non-mycorrhizal species at both extremes of nutrient availability play the same game? *Plant Cell Environm.* **36**, 1911–1915 (2013).
45. Maherali, H., Oberle, B., Stevens, P. F., Cornwell, W. K. & McGlenn, D. J. Mutualism persistence and abandonment during the evolution of the mycorrhizal symbiosis. *Am. Nat.* **188**, E113–E125 (2016).
46. Christenhusz, M. J. M. & Byng, J. W. The number of known plant species in the world and its annual increase. *Phytotaxa* **261**, 201–217 (2016).
47. Katoh, K. & Standley, D. M. MAFFT Multiple Sequence Alignment Software Version 7: Improvements in Performance and Usability. *Mol. Biol. Evol.* **30**, 772–780 (2013).
48. Guindon, S. & Gascuel, O. A simple, fast and accurate method to estimate large phylogenies by maximum-likelihood. *Syst Biol* **52**, 696–704 (2003).
49. Darriba, D., Taboada, G. L., Doallo, R. & Posada, D. jModelTest 2: more models, new heuristics and parallel computing. *Nature Methods* **9**, 772 (2012).
50. Bouckaert, R. *et al.* BEAST 2: a software platform for Bayesian evolutionary analysis. *PLoS Comput Biol* **10**, e1003537 (2014).
51. Clarke, J. T., Warnock, R. C. M. & Donoghue, P. C. J. Establishing a time-scale for plant evolution. *New Phytol.* **192**, 266–301 (2011).

## Acknowledgements

We thank Andrew Meade for help with BayesTraits, and Francis Martin and two anonymous reviewers for valuable comments on a previous version of the manuscript.

## Author Contributions

V.S.F.T.M. initiated and supervised the project. F.A.A.F. compiled the data with input from J.N.; F.A.A.F. and R.A.V. performed the analyses. All authors wrote the manuscript.

## Additional Information

**Supplementary information** accompanies this paper at <https://doi.org/10.1038/s41598-018-28920-x>.

**Competing Interests:** The authors declare no competing interests.

**Publisher's note:** Springer Nature remains neutral with regard to jurisdictional claims in published maps and institutional affiliations.



**Open Access** This article is licensed under a Creative Commons Attribution 4.0 International License, which permits use, sharing, adaptation, distribution and reproduction in any medium or format, as long as you give appropriate credit to the original author(s) and the source, provide a link to the Creative Commons license, and indicate if changes were made. The images or other third party material in this article are included in the article's Creative Commons license, unless indicated otherwise in a credit line to the material. If material is not included in the article's Creative Commons license and your intended use is not permitted by statutory regulation or exceeds the permitted use, you will need to obtain permission directly from the copyright holder. To view a copy of this license, visit <http://creativecommons.org/licenses/by/4.0/>.

© The Author(s) 2018