



A escolarização das mulheres no Brasil

Ana Maria F. Almeida
FE/UNICAMP

Sobre as palavras

- Escolarização
- Mulheres
- Brasil

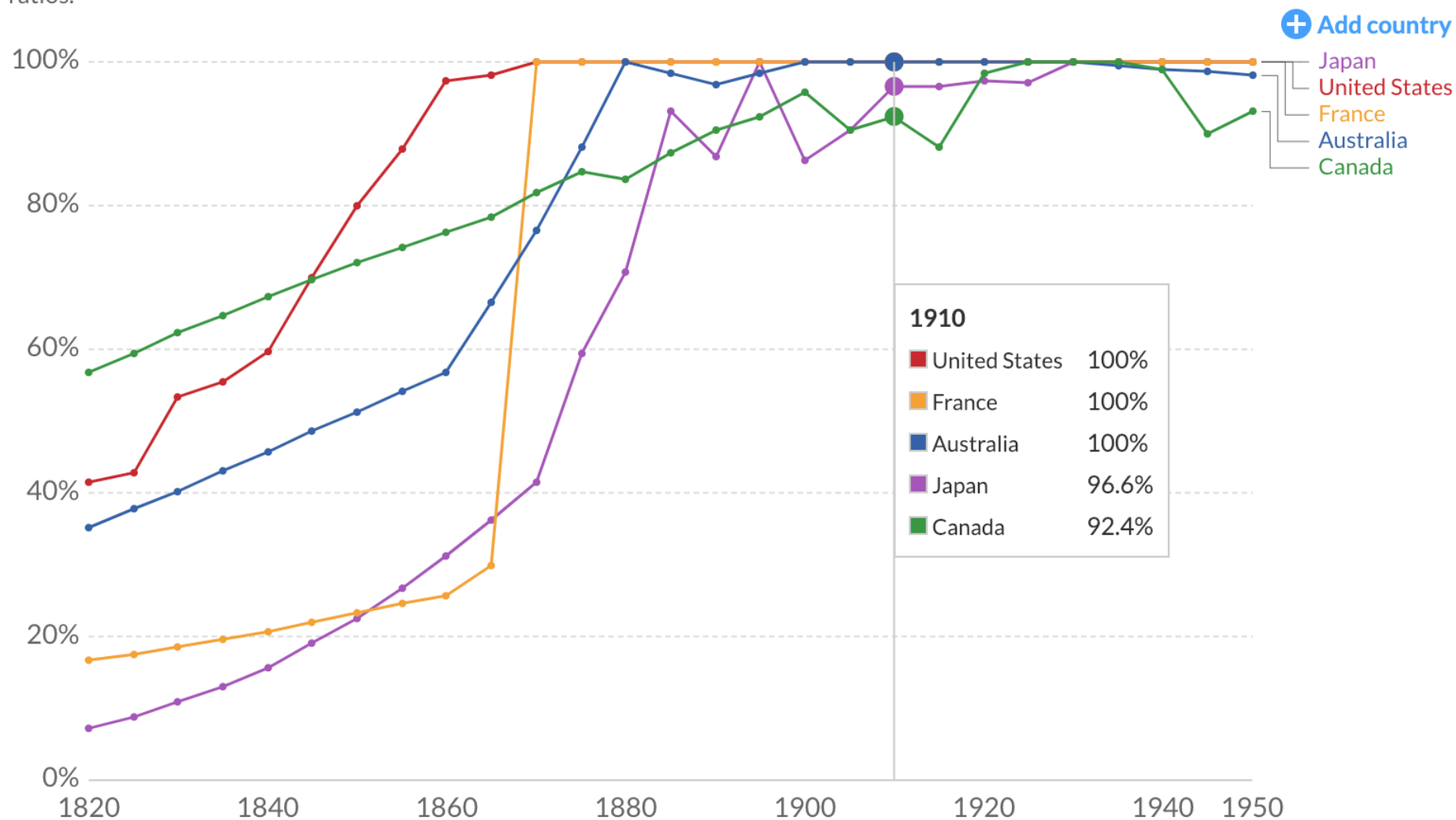
Escolarização



Escolarização obrigatória

Primary school enrollment

Estimated enrollment ratios for total population aged 15-64, primary education level. Estimates adjusted with repetition ratios.

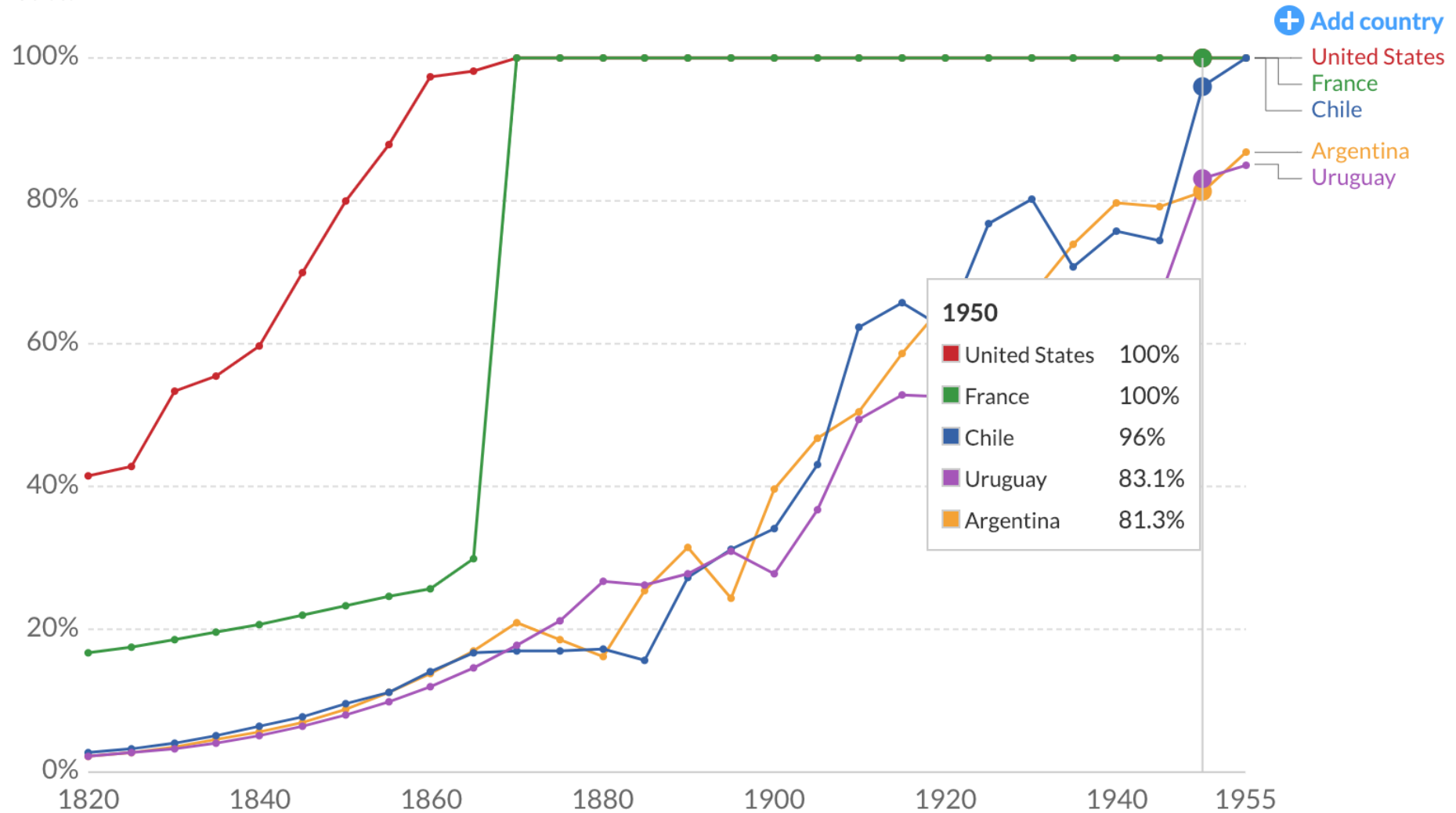


Source: Lee and Lee (2016)

CC BY

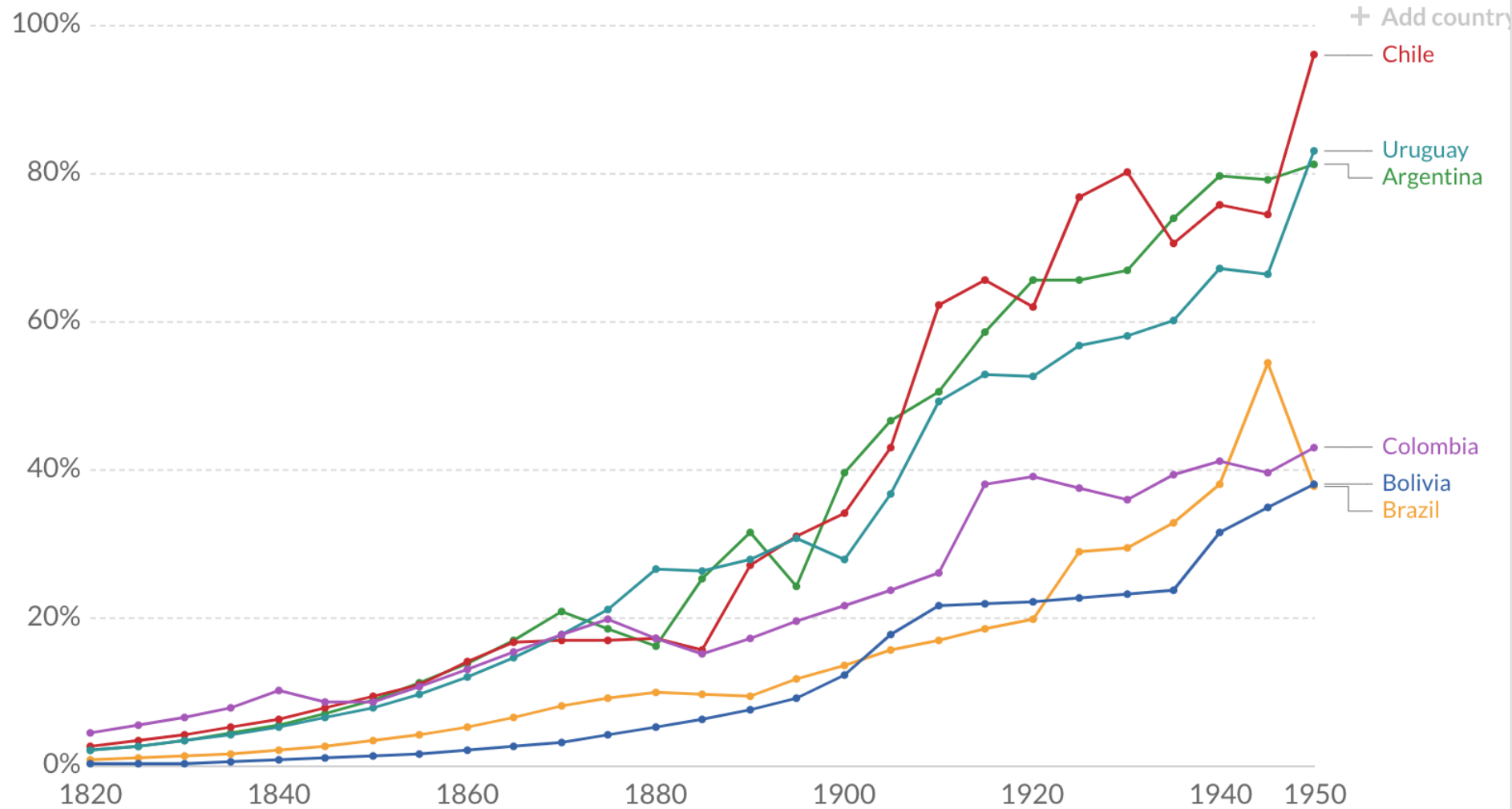
Primary school enrollment

Estimated enrollment ratios for total population aged 15-64, primary education level. Estimates adjusted with repetition ratios.



Primary school enrollment

Estimated enrollment ratios for total population aged 15-64, primary education level. Estimates adjusted with repetition ratios.



Source: Lee and Lee (2016)

CC BY

Escolarização obrigatória

1 - Escola

um lugar separado das lides práticas da vida

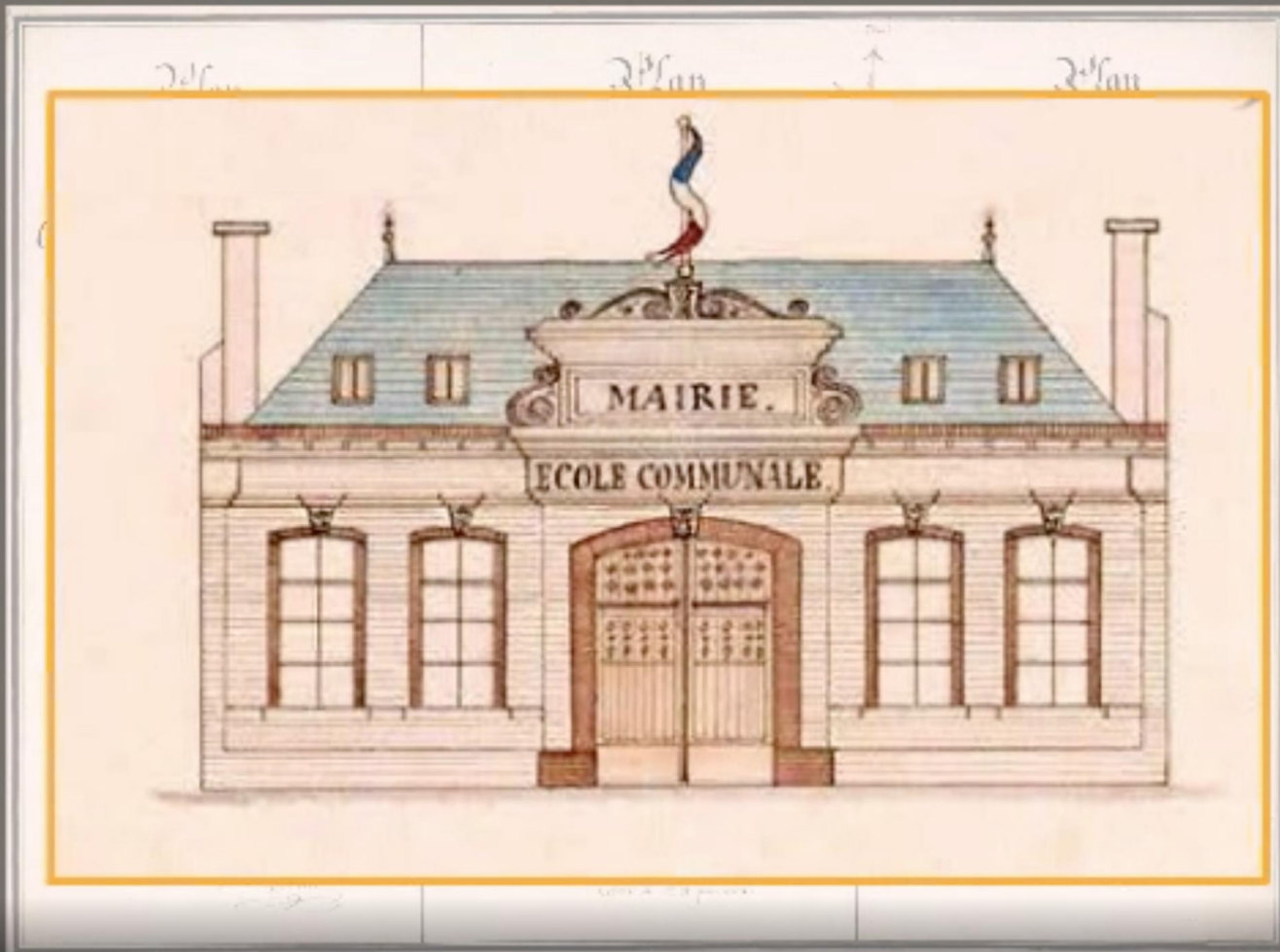


THE FIRST LATIN SCHOOL, ON NORTH SIDE OF SCHOOL STREET. 1635.

<https://www.massmoments.org/moment-details/massachusetts-passes-first-education-law.html>



<https://chicagohistoricschools.wordpress.com/2012/11/12/augustus-h-burley-elementary-school/>



1:29 / 4:59



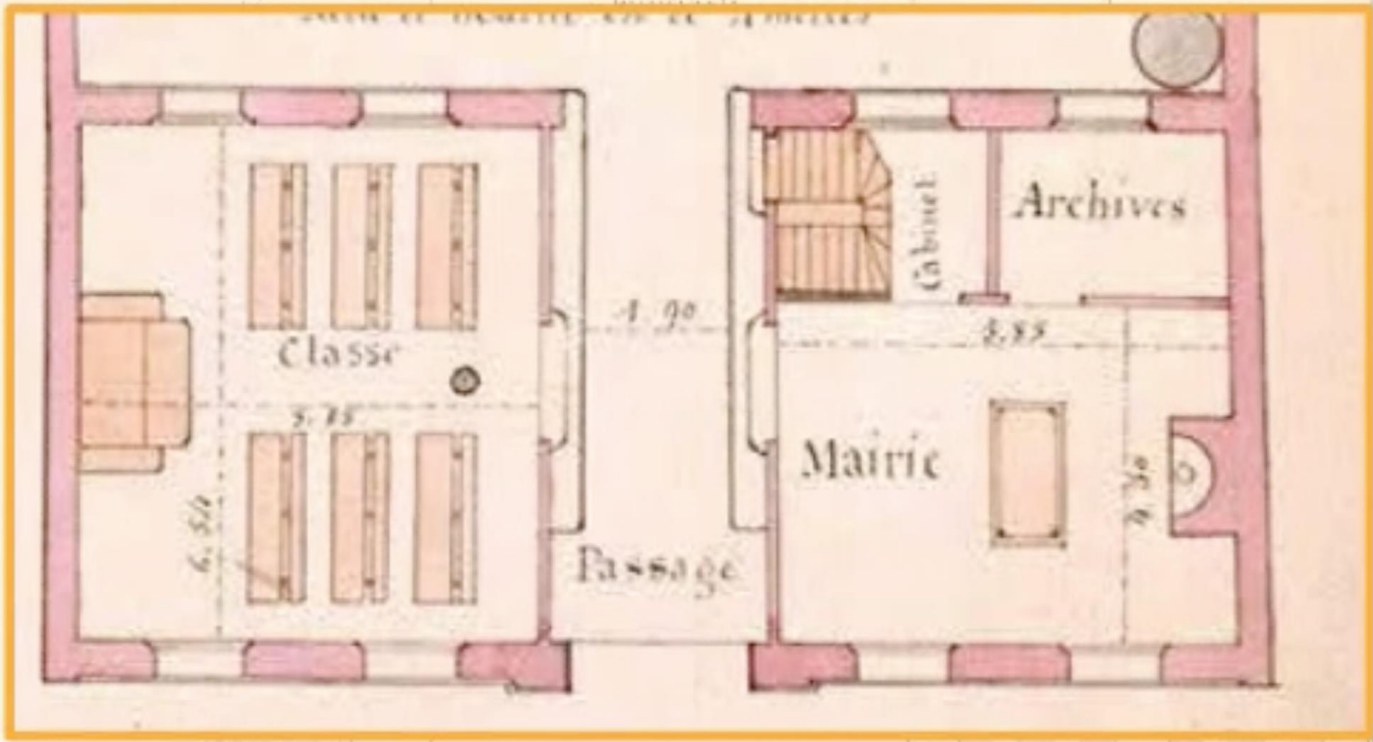
Escola de meninos (1871), Essertaux, FR (552 hab) <https://histoire-image.org/fr/etudes/construction-ecoles-somme-xixe-siecle>

Plan
de l'École des Garçons.

Plan
d'élévation de la Façade



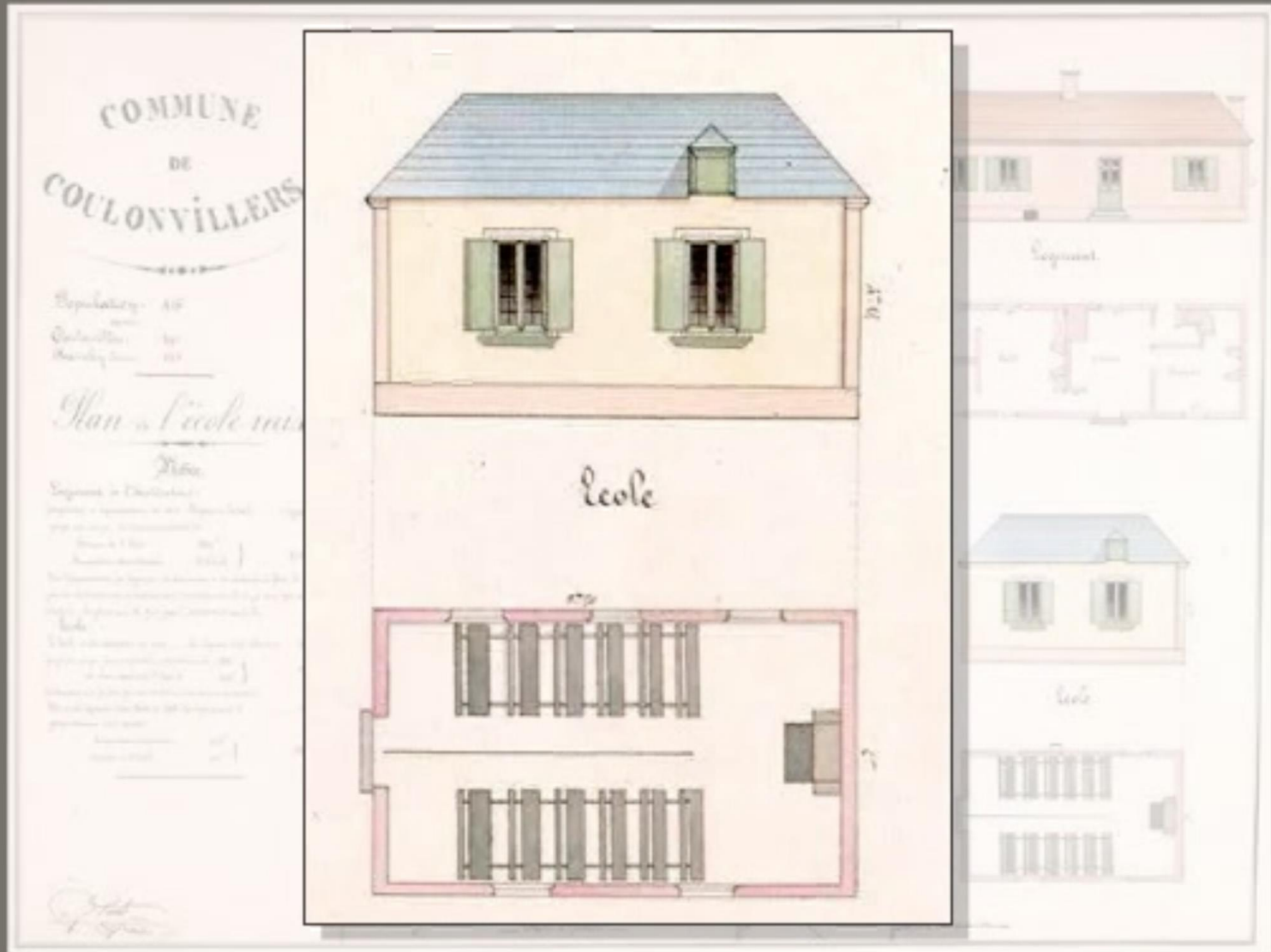
Plan
partiel ou d'ensemble



Plan

Ch. de la rue de la...

Ch. de la rue de la...



Escola Mista (1871), Coulonvillers e d'Hanchy, FR (416 hab) <https://histoire-image.org/fr/etudes/construction-ecoles-somme-xixe-siecle>



*Classe de garçons. Ecole d'Hellemmes.
Archives départementales du Nord*



Press esc to exit full screen



Classe de filles. Ecole d'Hellemmes.
Archives départementales du Nord

0:09 / 4:00



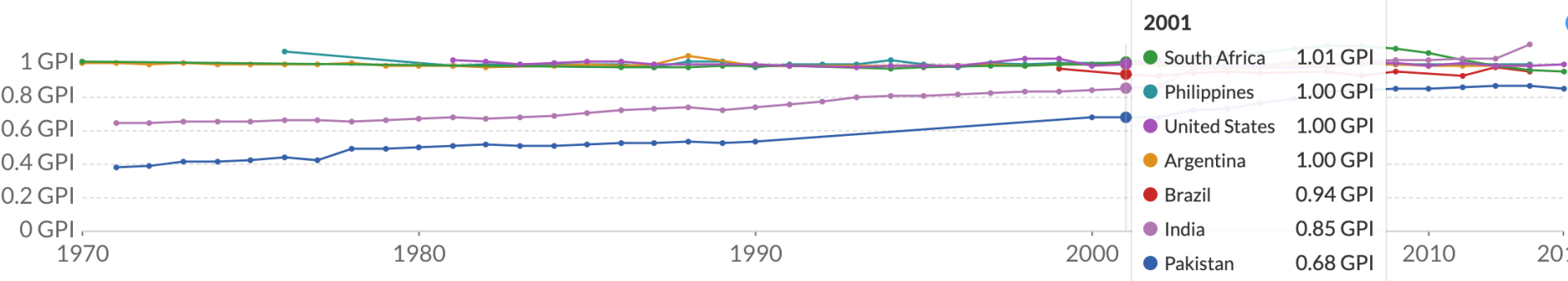
A escolaridade das mulheres



Uma história de sucesso

Gross enrolment ratio, primary, gender parity index (GPI), 1970 to 2014

Ratio of female gross enrolment ratio for primary to male gross enrolment ratio for primary education. It is calculated by dividing the female value for the indicator by the male value for the indicator. A GPI equal to 1 indicates parity between females and males. In general, a value less than 1 indicates disparity in favor of males and a value greater than 1 indicates disparity in favor of females.

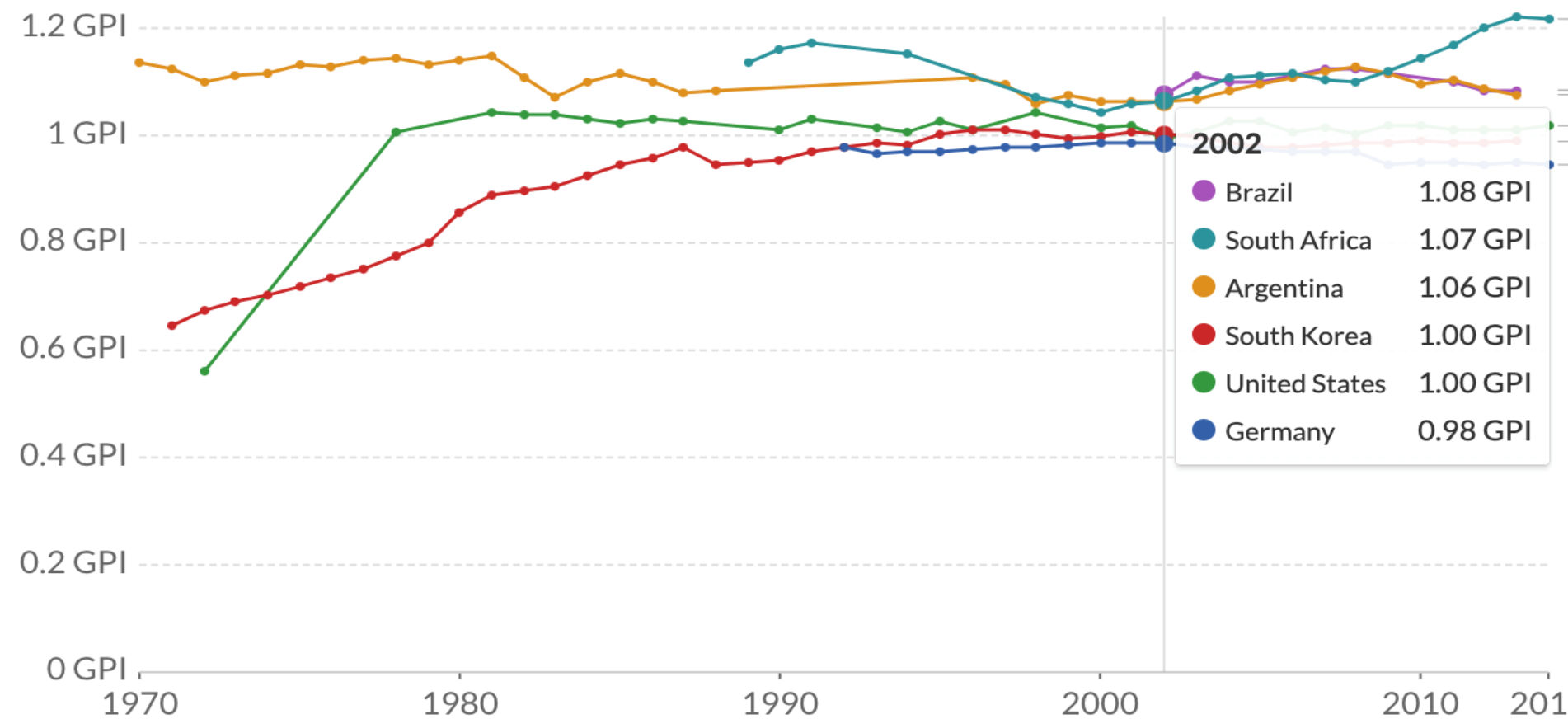


Source: World Bank



Gross enrolment ratio, secondary education, gender parity index (GPI), 1970 to 2014

Ratio of female gross enrolment ratio for secondary to male gross enrolment ratio for secondary. It is calculated by dividing female value for the indicator by the male value for the indicator. A GPI equal to 1 indicates parity between females and males in general, a value less than 1 indicates disparity in favor of males and a value greater than 1 indicates disparity in favor of females.

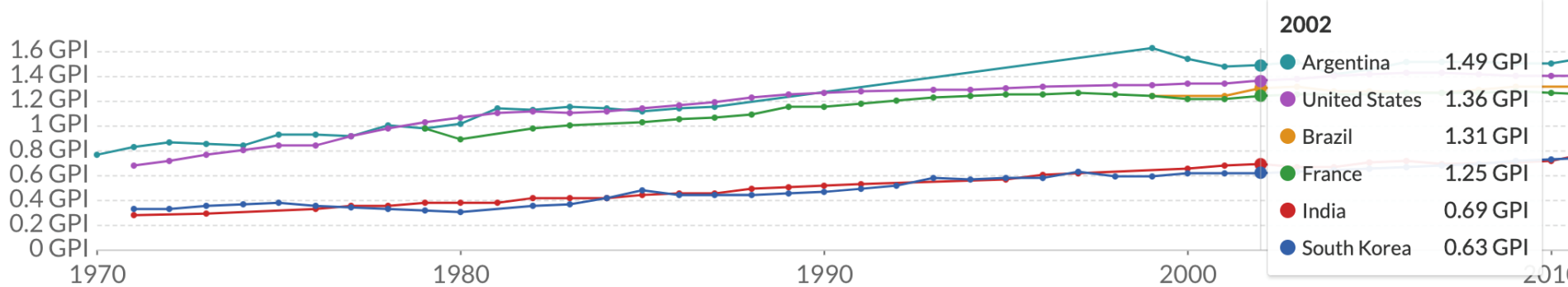


Source: World Bank

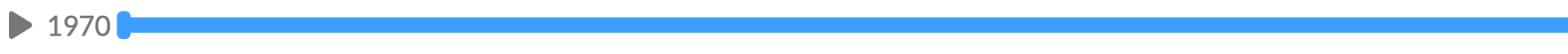
▶ 1970

Gross enrolment ratio, tertiary, gender parity index (GPI), 1970 to 2014

Ratio of female to male net enrolment ratio for tertiary education. It is calculated by dividing the female value for the indicator by the male value for the indicator. A value of 1 indicates parity between females and males. In general, a value less than 1 indicates disparity in favor of males and a value greater than 1 indicates disparity in favor of females. Gender Parity is defined as a GPI between 0.97 and 1.03.



Source: World Bank



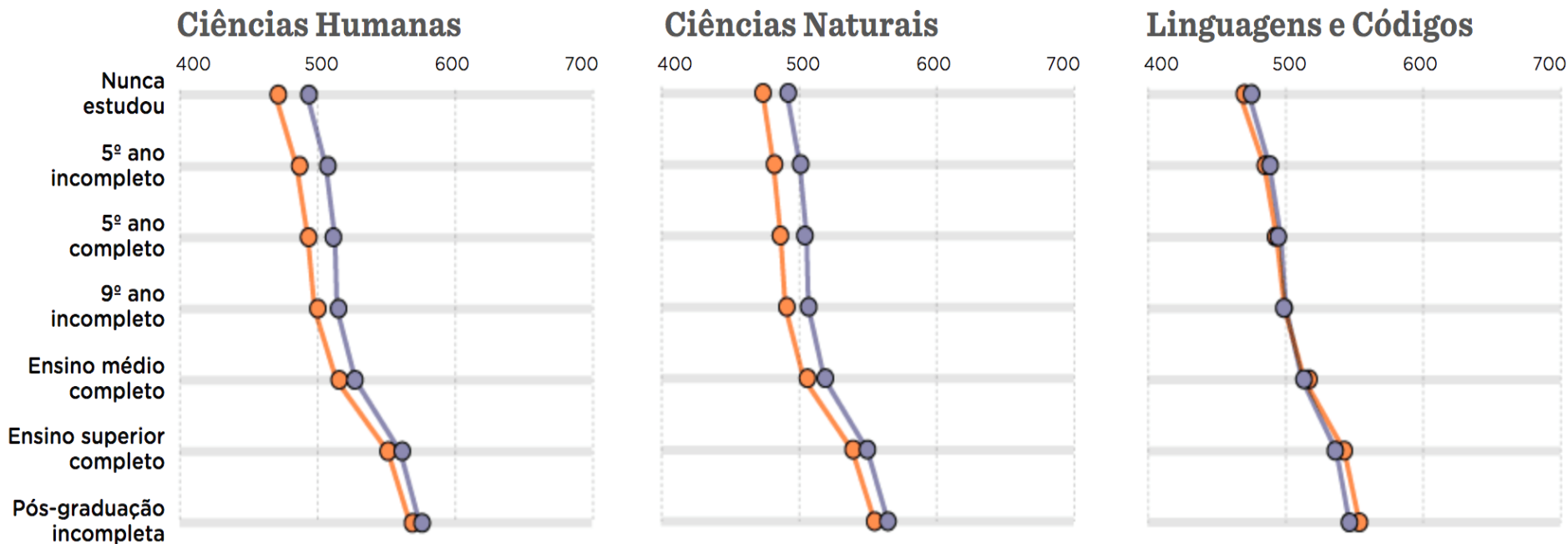
Distribuição das notas dos participantes no ENEM por gênero e área

NOTA DO PARTICIPANTE DE ACORDO COM GÊNERO

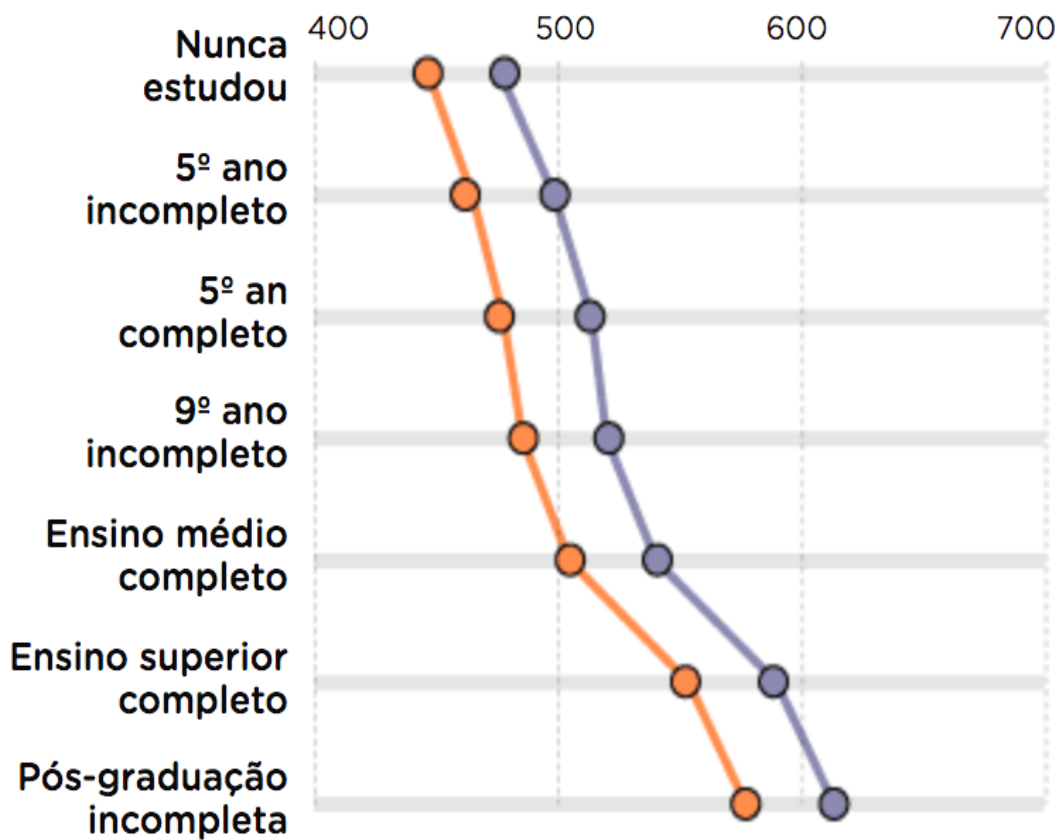
Por área do conhecimento, considerando o pai ou mãe com maior escolaridade

GÊNERO

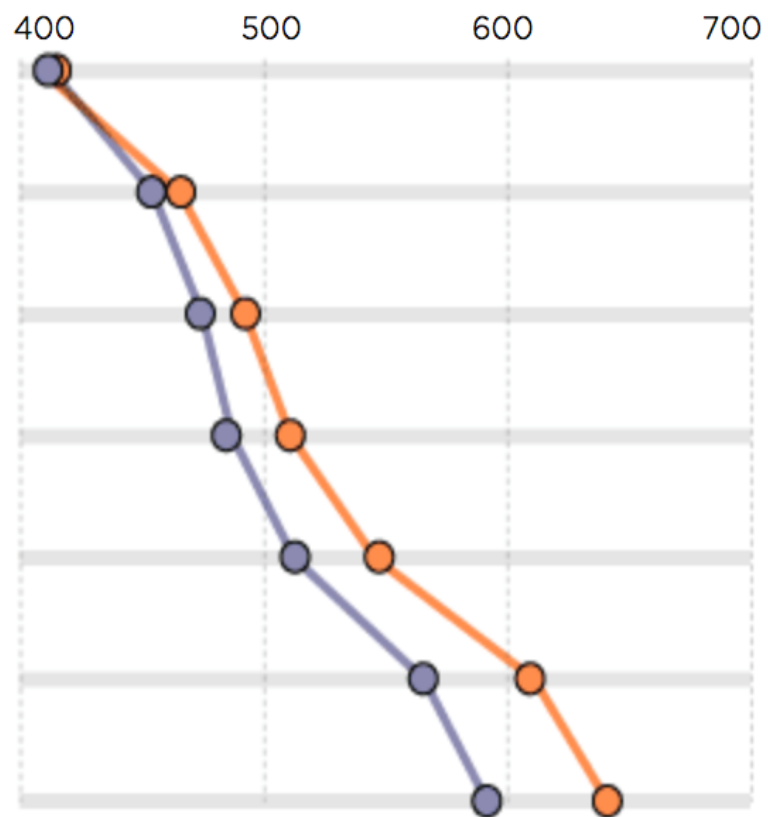
— FEMININO — MASCULINO



Matemática



Redação



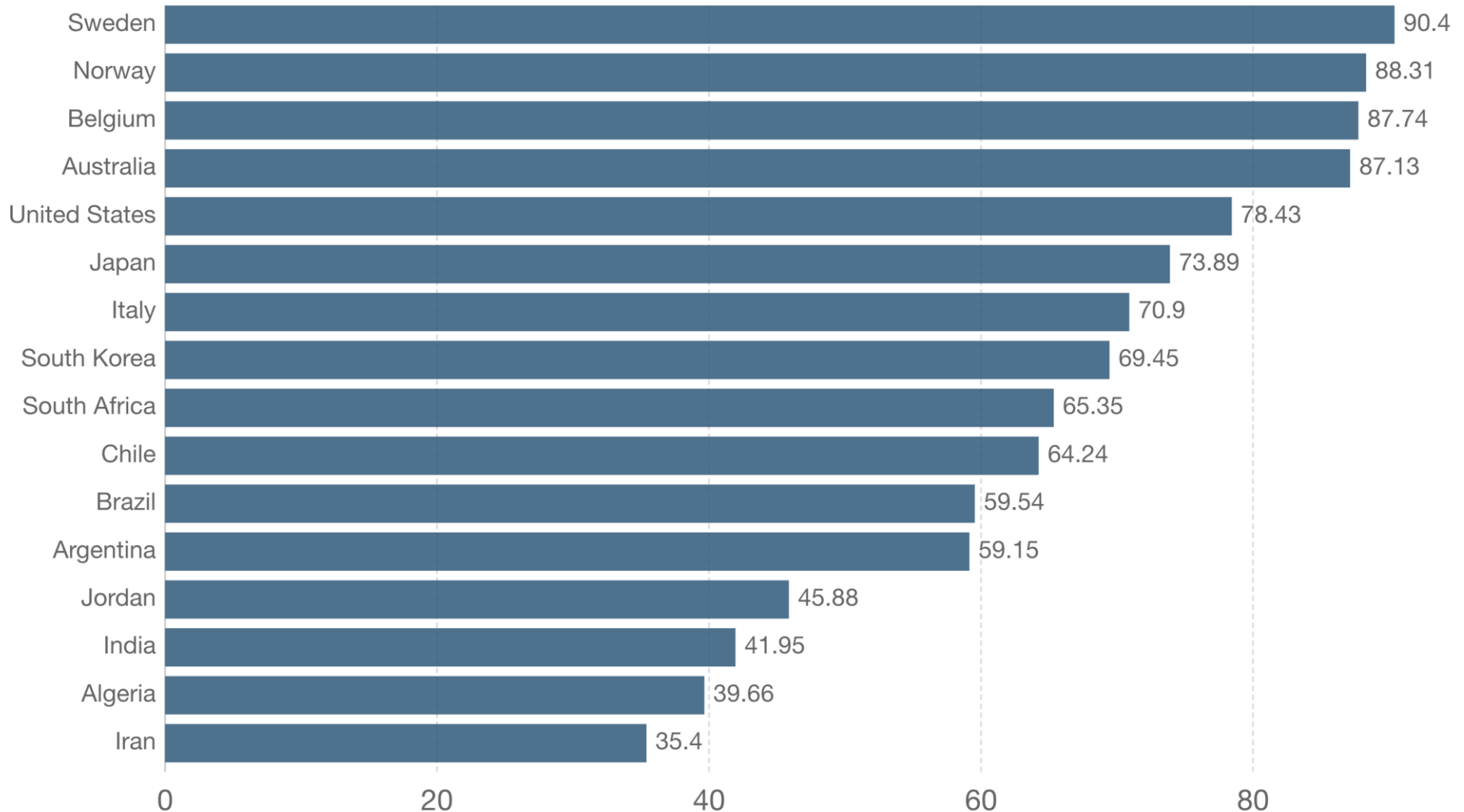
Como explicar essas diferenças?

- 1) A “ameaça do estereótipo” (Spencer, Steele, Quinn, 1999; Tomasetto et al., 2011)
- 2) Diferenças na alocação de recursos pelas famílias
- 3) Diferenças de tratamento e expectativas no interior das escolas.

A escola liberta as mulheres
mas....

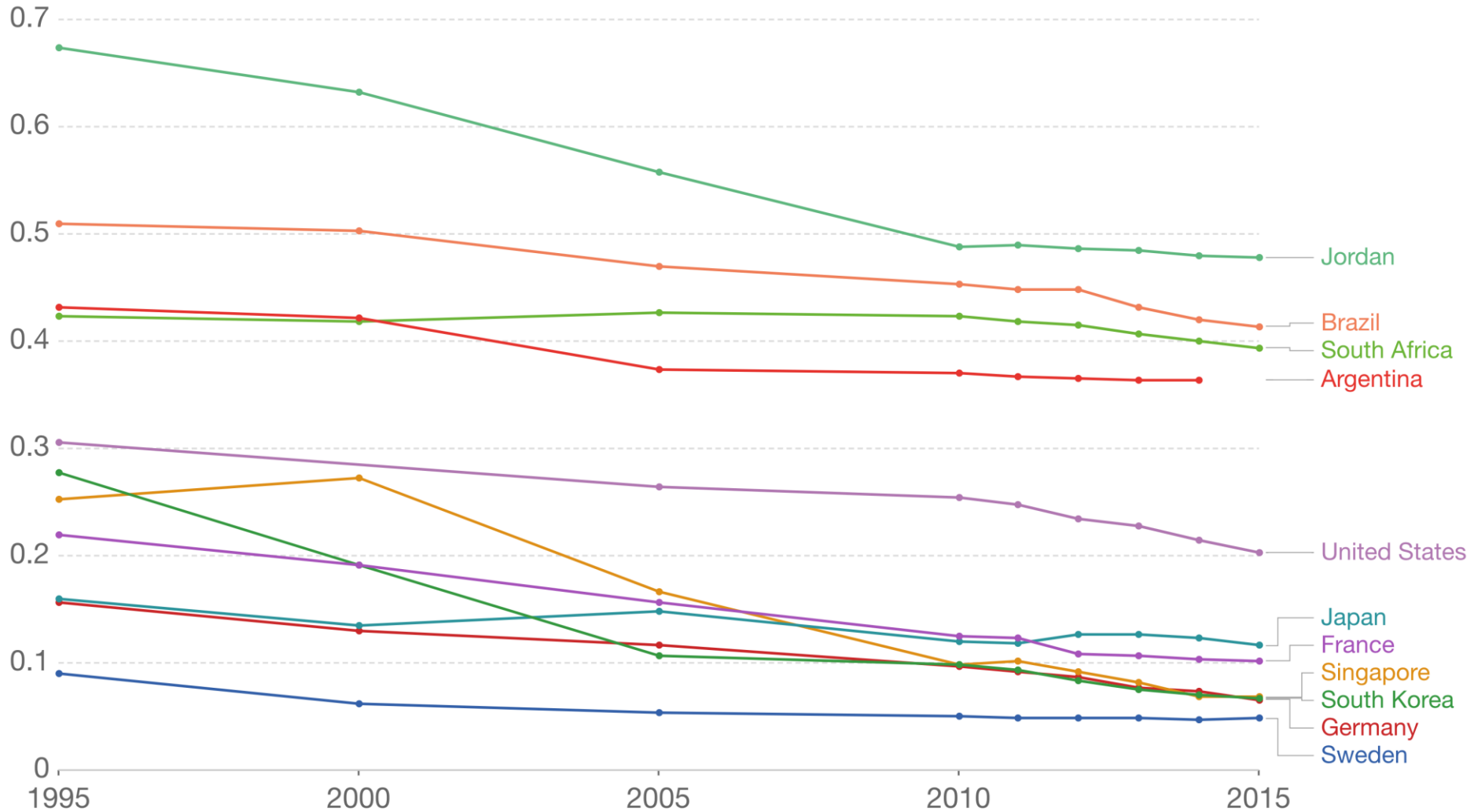
Women's Economic Opportunity Index, 2012

This index is based on five underlying indicators: Labor policy and practice; Access to Finance; Education and training; Women's legal and social status; and the General business environment. Scores are scaled 0-100. Higher values denote more opportunities.



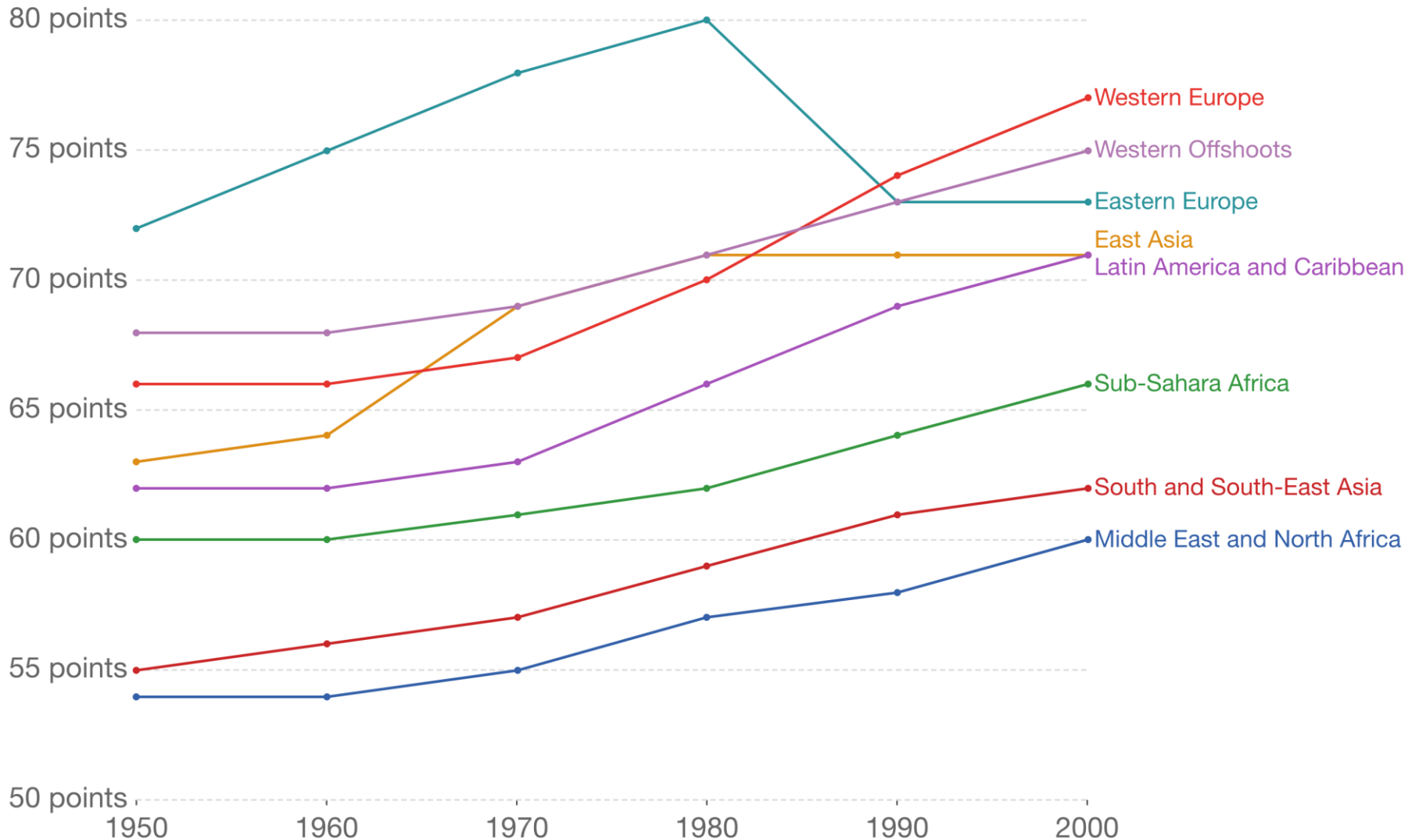
Gender Inequality Index from the Human Development Report, 1995 to 2015

This index covers three dimensions: reproductive health, empowerment, and economic status. Scores are between 0-1 and higher values indicate higher inequalities.



Historical Gender Equality Index, 1950 to 2000

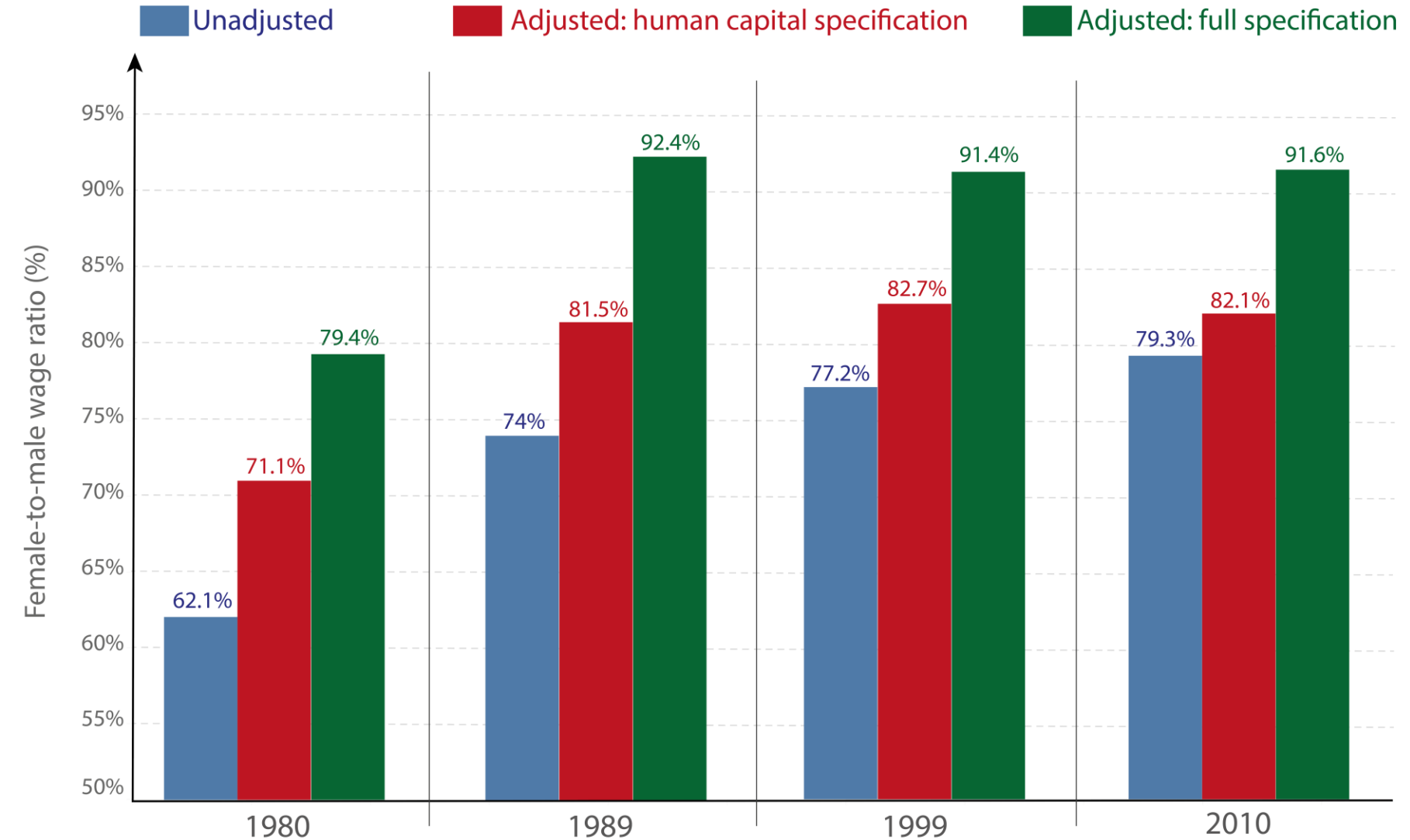
This index is based on gender ratios across four dimensions: (i) Health; (ii) Socio-economic resources; (iii) Gender disparities in the household; and (iv) Gender disparities in politics. Higher scores denote less inequality.



Female-to-male wage ratio in the US

Shown is the evolution of the female to male wage ratios from the years 1980 to 2010 under three scenarios:

- (i) Unadjusted for co-variates (blue);
 - (ii) Adjusted, controlling for gender differences in human capital, i.e. education and experience (red);
 - (iii) Adjusted, controlling for a full range of covariates, including human capital, occupation, region, race etc. (green).
- The difference between 100% and the full specification (shown in green) is the “unexplained” residual.



À guisa de conclusão

- O século XX foi o século das mulheres na educação.
- Os ganhos não foram homogêneos para todos os grupos sociais.
- Os ganhos não se traduzem imediatamente no mercado de trabalho.

Obrigada!