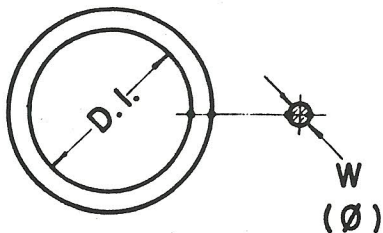
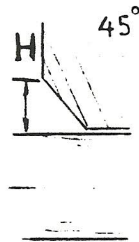
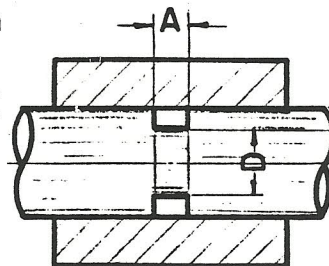
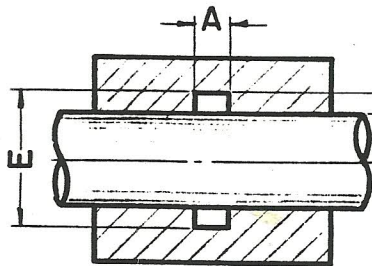
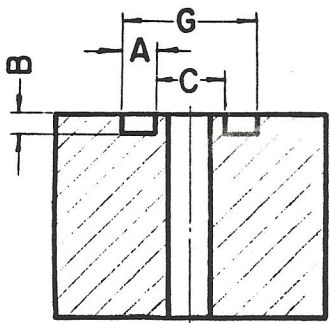


O - RINGS

APLICAÇÃO ESTÁTICA

APLICAÇÃO DINÂMICA



W	Ø	EST.		DIN.		H
		A	B	A	B	
1/16	1,78	2,4	1,4	2,3	1,3	2,3
3/32	2,62	3,6	2,3	3,2	2,1	3,4
1/8	3,53	4,8	3,1	4,2	2,9	4,6

NOTAS:

W = DIA. NOMINAL E Ø = DIA. REAL
 NO DES. DEVEM SER COTADOS OS VALORES DE "C", "B" E "G" SENDO $G = C + 2A$.

Nº	D.I.	W	C	D	E	Nº	D.I.	W	C
1820 - 1	1/8	1/16	3.2	3.5	5.9	1866 - 1	1 5/8	1/8	41.3
" - 2	5/32		4.0	4.3	6.7	" - 2	1 3/4		44.5
" - 3	3/16		4.8	5.1	7.5	" - 3	1 7/8		47.7
" - 4	7/32		5.6	5.9	8.3	" - 4	2		50.8
" - 5	1/4		6.4	6.7	9.1	" - 5	2 1/8		54.0
" - 6	5/16		7.9	8.2	10.7	" - 6	2 1/4		57.2
" - 7	3/8		9.5	9.8	12.3	" - 7	2 3/8		60.4
" - 8	3/8	3/32	9.5	9.7	14.0	" - 8	2 1/2		63.5
" - 9	7/16		11.1	11.3	15.6	" - 9	2 5/8		66.7
" - 10	1/2		12.7	12.9	17.1	" - 10	2 3/4		69.9
" - 11	9/16		14.3	14.5	18.7	" - 11	2 7/8		73.1
" - 12	5/8		15.9	16.1	20.3	" - 12	3		76.2
" - 13	11/16		17.5	17.7	21.9	" - 13	3 1/8		79.4
" - 14	3/4		19.0	19.2	23.5	" - 14	3 1/4		82.6
" - 15	3/4	1/8	19.0	19.2	25.2	" - 15	3 3/8		85.8
" - 16	13/16		20.6	20.8	26.7	" - 16	3 1/2		88.9
" - 17	7/8		22.2	22.4	28.3	" - 17	3 5/8		92.1
" - 18	15/16		23.8	24.0	29.9	" - 18	3 3/4		95.3
" - 19	1		25.4	25.6	31.5	" - 19	4		98.5
" - 20	1 1/16		27.0	27.2	33.1	" - 20	4 1/8		101.6
" - 21	1 1/8		28.6	28.8	34.6	" - 21	4 1/4		104.8
" - 22	1 3/16		30.2	30.3	36.2	" - 22	4 3/8		108.0
" - 23	1 1/4		31.8	31.9	37.9	" - 23	4 1/2		111.2
" - 24	1 5/16		33.3	33.4	39.4	" - 24	4 5/8		114.3
" - 25	1 3/8		34.9	35.0	41.0	" - 25	4 3/4		117.5
" - 26	1 7/16		36.5	36.6	42.6	" - 26	4 7/8		120.7
" - 27	1 1/2		38.1	38.2	44.2				

AS DIMENSÕES SÃO EM MM. EXCETO W E D.I. QUE SÃO EM POL.

Oring 1/8

4 3/4

178

Nº (422)

GO-02

RO-35

GC-01

PC-14

"TABELA DE ROSCAS"

LABORATÓRIO PELLETRON LINC - JCTERRASSI - 09/JUN/03

ROSCA AMERICANA FINA NF (UNF)

Tamanho	Ø externo	fios p/ pol.	Ø da broca
n°0	1, 529	80	1, 20
n°1	1, 854	72	1, 50
n°2	2, 184	64	1, 80
n°3	2, 515	56	2, 10
n°4	2, 845	48	2, 35
n°5	3, 175	44	2, 65
n°6	3, 505	40	2, 90
n°8	4, 166	36	3, 50
n°10	4, 826	32	4, 10
n°12	5, 486	28	4, 60
1/4"	6, 350	28	5, 50
5/16"	7, 938	24	6, 90
3/8"	9, 525	24	8, 50
7/16"	11, 113	20	9, 90
1/2"	12, 700	20	11, 50
9/16"	14, 288	18	13, 00
5/8"	15, 875	18	14, 50
3/4"	19, 050	16	17, 50
7/8"	22, 225	14	20, 50
1"	25, 400	14	23, 50
1. 1/8"	28, 757	12	26, 50
1. 1/4"	31, 750	12	29, 50
1. 3/8"	34, 925	12	33, 00
1. 1/2"	38, 100	12	36, 00

ROSCA AMERICANA GROSSA NC (UNC)

Tamanho	Ø externo	fios p/ pol.	Ø da broca
n°1	1, 854	64	1, 50
n°2	2, 184	56	1, 75
n°3	2, 515	48	2, 00
n°4	2, 845	40	2, 25
n°5	3, 175	40	2, 60
n°6	3, 505	32	2, 75
n°8	4, 166	32	3, 40
n°10	4, 826	24	3, 80
n°12	5, 486	24	4, 50
1/4"	6, 350	20	5, 10
5/16"	7, 938	18	6, 60
3/8"	9, 525	16	8, 00
7/16"	11, 113	14	9, 40
1/2"	12, 700	13	10, 50
9/16"	14, 288	12	12, 00
5/8"	15, 875	11	13, 50
3/4"	19, 050	10	16, 50
7/8"	22, 225	9	19, 50
1"	25, 400	8	22, 50
1. 1/8"	28, 575	7	25, 00
1. 1/4"	31, 750	7	28, 00
1. 3/8"	34, 925	6	31, 00
1. 1/2"	38, 100	6	34, 00
1. 3/4"	44, 450	5	40, 50
2"	50, 800	4. 1/2	46, 50