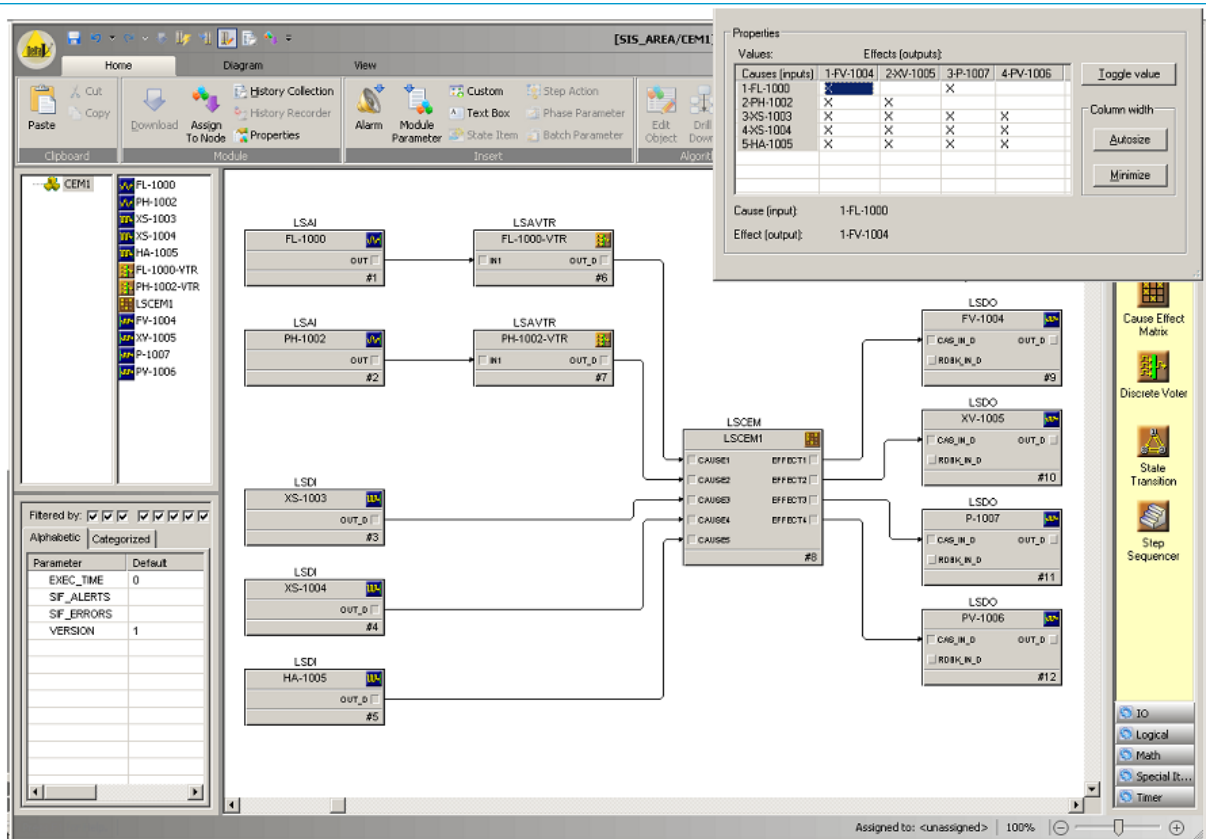


Número		18	19	20	21	22	23
Fluxograma DE-ABC-2020		005	005	005	005	005	005
Efeito	Tag	PSV-1223007	PSV-1223008	LV-1223005	LV-1223006	PSV-1223009	LV-1223007
	Evento	Abre PSV-007	Abre PSV-008	Abre LV-005	Fecha LV-006	Abre PSV-009	Fecha LV-007
Causa	Evento						
Evento	Tag						
Pressão muito alta no TQ-006	PSHH-006		X			X	
Pressão muito baixa no TQ-005	PSLL-005	X				X	
...							

TAG #	Description	SIL	INSTRUMENT RANGE	TRIP VALUE	UNITS	OPENS VALVE FV-1004	OPEN VALVE XV-1005	STOP PUMP P-1007	CLOSE VALVE PV-1006	NOTES
FL-1000	Flow to main reactor R-100	2	0-200	100.0	gpm	X		X		1
PH-1002	Reactor internal pressure	2	0-800	600	psi	X	X			1, 2
XS-1003	Loss of control power					X	X	X	X	
XS-1004	Loss of instrument air					X	X	X	X	
HA-1005	Manual shutdown					X	X	X	X	

Notes:
1. Two-second delay required before closing FV-1004.
2. Reset located at valve PV-1006.

	Output 1	Output 2	Output 3	Output 4	Output 5	Output 6	Output 7	Output 8	Output 9	Output 10
Input 1	OR		OR							OR
Input 2							AND	OR		OR
Input 3							OR	AND		OR
Input 4	OR	OR	OR		OR			OR		OR
Input 5	OR									OR
Input 6					AND					OR
Input 7				OR	AND			OR		
Input 8		OR								OR
Input 9										OR



SIMATIC Safety Matrix - [Safety_Matrix --]

File Edit View Tools Window Help

SIMATIC SAFETY MATRIX

All Groups

Groups	Input Tag	Func	Limit/Trip	EngUnit	Cause Description	Num	1	2	3	4	5	6	7	8	9	10	11	12	13	14	15	16	
						1																	
						2																	
						3																	
						4																	
						5																	
						6																	
						7																	
						8																	
						9																	
						10																	
						11																	
						12																	
						13																	
						14																	
						15																	
						16																	

User Major Revisions:

- 1 -
- 2 -
- 3 -
- 4 -
- 5 -
- 6 -

Legend:

Intersection Types:

- N - Not-Stored
- S - Set-Stored
- V - Override
- R - Resettable Override

User Notes:

- 1 -
- 2 -
- 3 -
- 4 -
- 5 -
- 6 -
- 7 -
- 8 -
- 9 -
- 10 -
- 11 -
- 12 -
- 13 -
- 14 -
- 15 -
- 16 -
- 17 -
- 18 -
- 19 -
- 20 -

Title:

Project:

Not associated with SIMATIC Project

SIMATIC SAFETY MATRIX

	ACK Drivers		View Tags	View Status
	Bypass	View Events	Clear Events	Bypass Report
All Groups	▼			Select

Input Tag	Values	Func	Limit/Trip	EngUnit	Cause Description	Num	Action	Output Tag	Values	Effect Description		
PS_100	FALSE		FALSE		Feed Pump High Pressure Switch	1	ShutDown	PM_100*	TRUE	Feed pump		
LSL_100	TRUE		TRUE		Tank_100 Level switch high	2	Close	BV_100A*	TRUE	Feed block valve		
LSL_200	FALSE		TRUE		Hopper_200 Level switch Low	3	Close	BV_100B*	TRUE	Feed block valve		
PSH_200	FALSE		TRUE		Hopper_200 High Pressure	4	close	BV_200	FALSE			
PT_100	7.2336		H 38.00	PSIG	Feed pressure	5	notify	#OUT_TO_AREA1	FALSE			
LT_100	24.4568		H 50.00	Feet	Tank Level	6	notify	#OUT_TO_AREA2	FALSE			
PT_101	13.3822		H 26.00		Tank Pressure	7	notify	#OUT_TO_AREA3	FALSE	Hopper Feed block valve		
PT_102	13.1688	Vote	D 3.0	in_H20				notify	#OUT_TO_AREA3		FALSE	
PT_103	12.478							notify	#OUT_TO_AREA3		FALSE	
LT_200	16.999		H 50.00	Ft	Hopper Level	8	Open	BV_300	TRUE	Tank Drain block valve		
TS_101	TRUE		FALSE		Tank_100 High Temperature switch	9	~OPEN	#ESD	TRUE	ESD shutdown		
TS_102	TRUE	AND	FALSE							SV_100*	TRUE	Tank relief valve
TS_103	TRUE		FALSE									
TS_104	FALSE		FALSE									
TS_105	FALSE	AND	FALSE									
TS_106	FALSE		FALSE									
TS_107	FALSE		FALSE									
TS_108	FALSE	AND	FALSE									
TS_109	FALSE		FALSE									

Input Tag	Values	Func	Limit/Trip	EngUnit	Cause Description	Num	1	2	3	4	5	6	7	8	9	10	11	12	13	14	15	16			
PS_100	FALSE		FALSE		Feed Pump High Pressure Switch	1	N																		
LSL_100	TRUE		TRUE		Tank_100 Level switch high	2		N																	
LSL_200	FALSE		TRUE		Hopper_200 Level switch Low	3		N	N																
PSH_200	FALSE		TRUE		Hopper_200 High Pressure	4		N	N																
PT_100	7.2336		H 38.00	PSIG	Feed pressure	5		S	S	S															
LT_100	24.4568		H 50.00	Feet	Tank Level	6		2S	N	N															
PT_101	13.3822		H 26.00		Tank Pressure	7																			
PT_102	13.1688	Vote	D 3.0	in_H20																					
PT_103	12.478																								
LT_200	16.999		H 50.00	Ft	Hopper Level	8																			
TS_101	TRUE		FALSE		Tank_100 High Temperature switch	9																			
TS_102	TRUE	AND	FALSE																						
TS_103	TRUE		FALSE																						
TS_104	FALSE		FALSE																						
TS_105	FALSE	AND	FALSE																						
TS_106	FALSE		FALSE																						
TS_107	FALSE		FALSE																						
TS_108	FALSE	AND	FALSE																						
TS_109	FALSE		FALSE																						

User Notes
1 - 10A demo