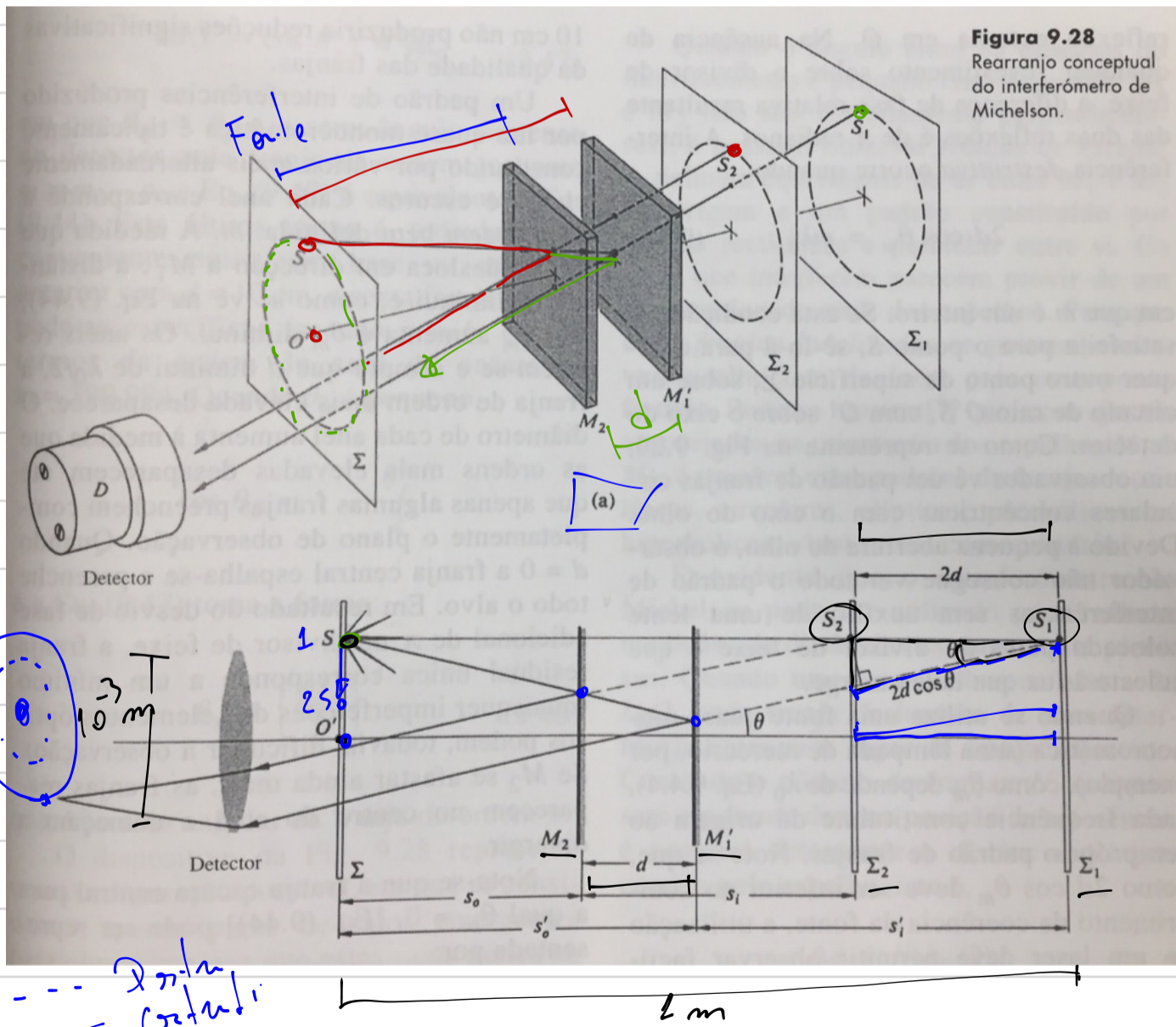


Reflexões espúrias
 $\phi = +\pi$
 Filme metálico
 $\Delta\phi = +\pi$
 $\Delta x \rightarrow \frac{\lambda}{4}$
 feixe (1+2) $\Delta\phi = +\pi$
 antiparalelo \rightarrow Sem luz. I.I. destrutiva
 só o que em $I_{máx}$ construtivo



$2d \cos \theta$

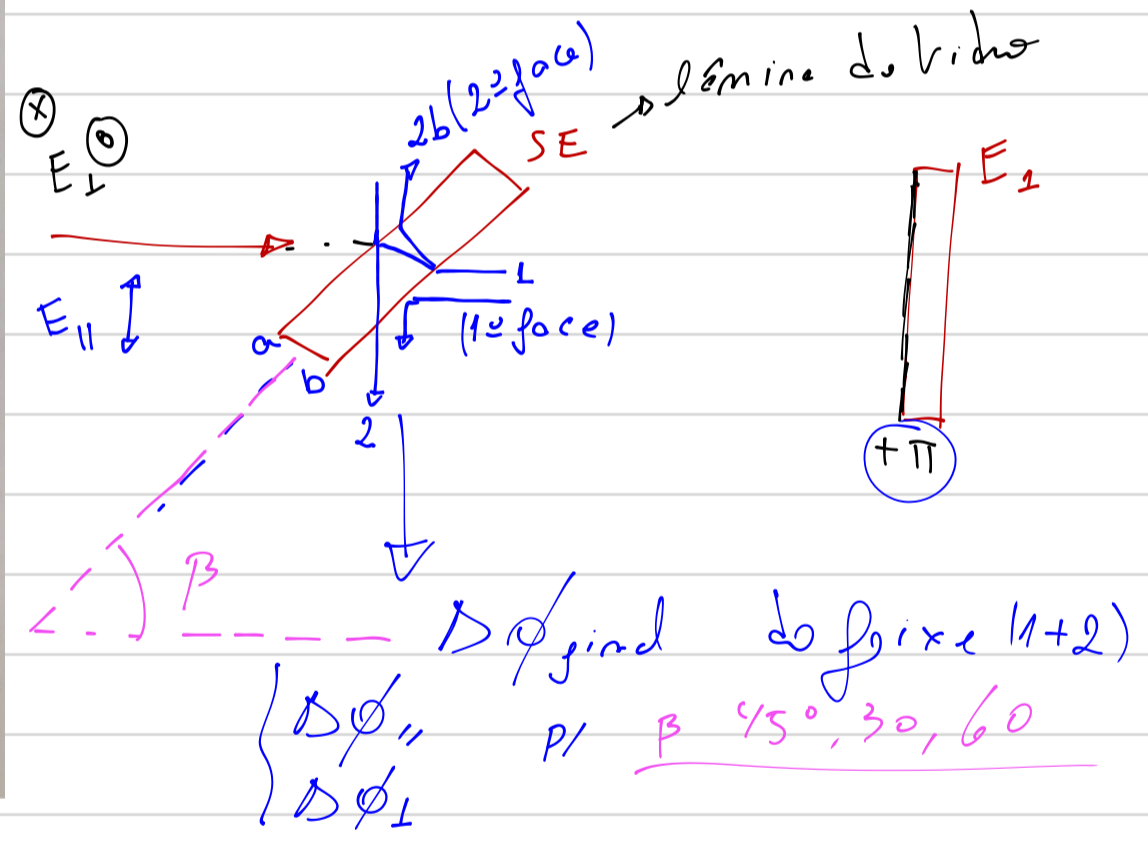
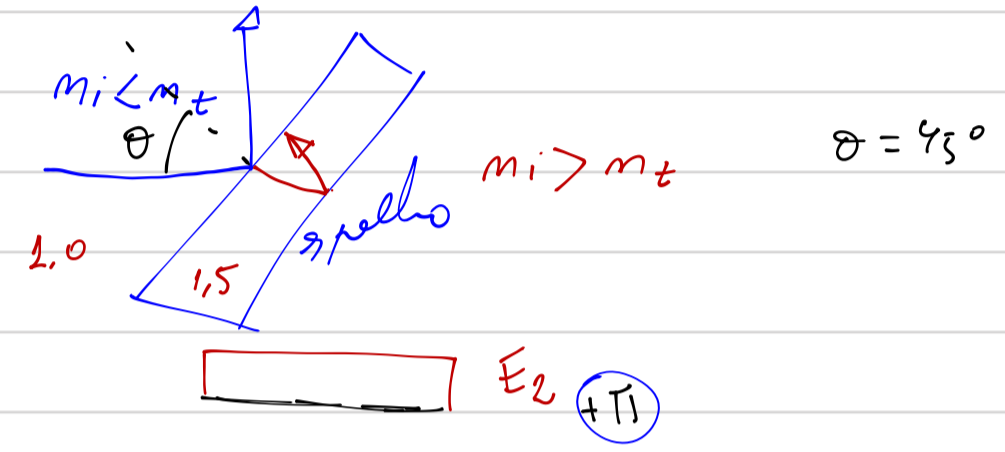
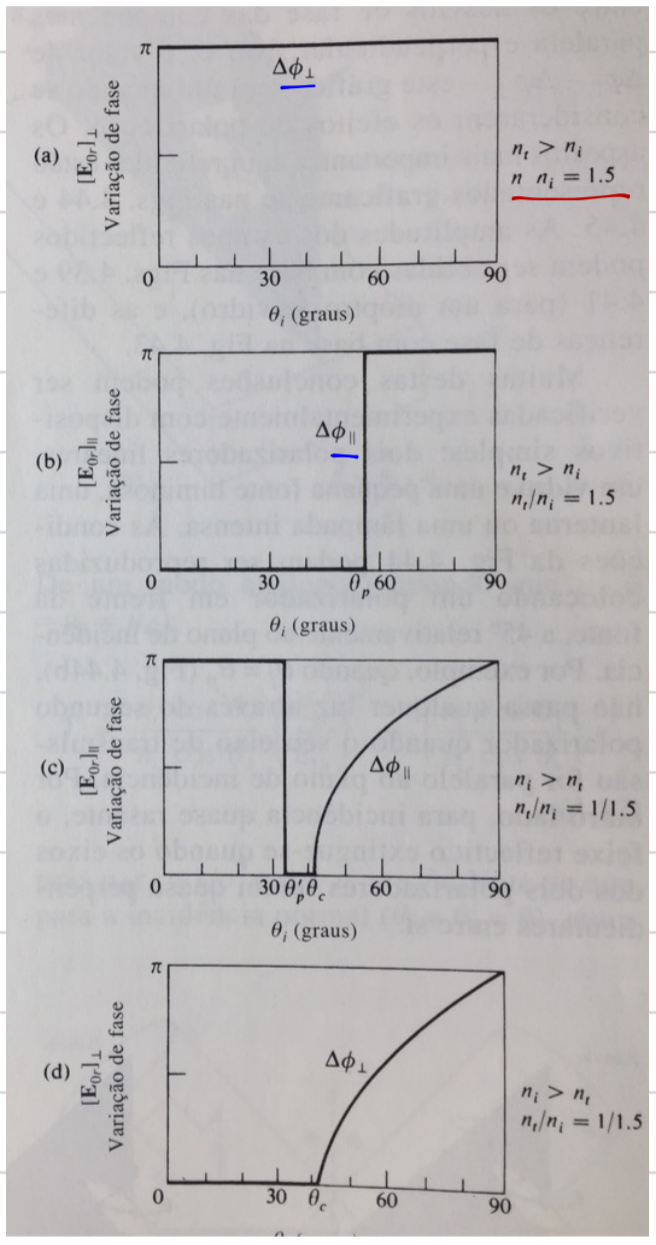
$2d \cos \theta = m\lambda \rightarrow I_{máx}$ construtivo

porque $\forall 2d \cos \theta = \text{quero} \Rightarrow I_{mín}$ destrutivo ($m=0$)

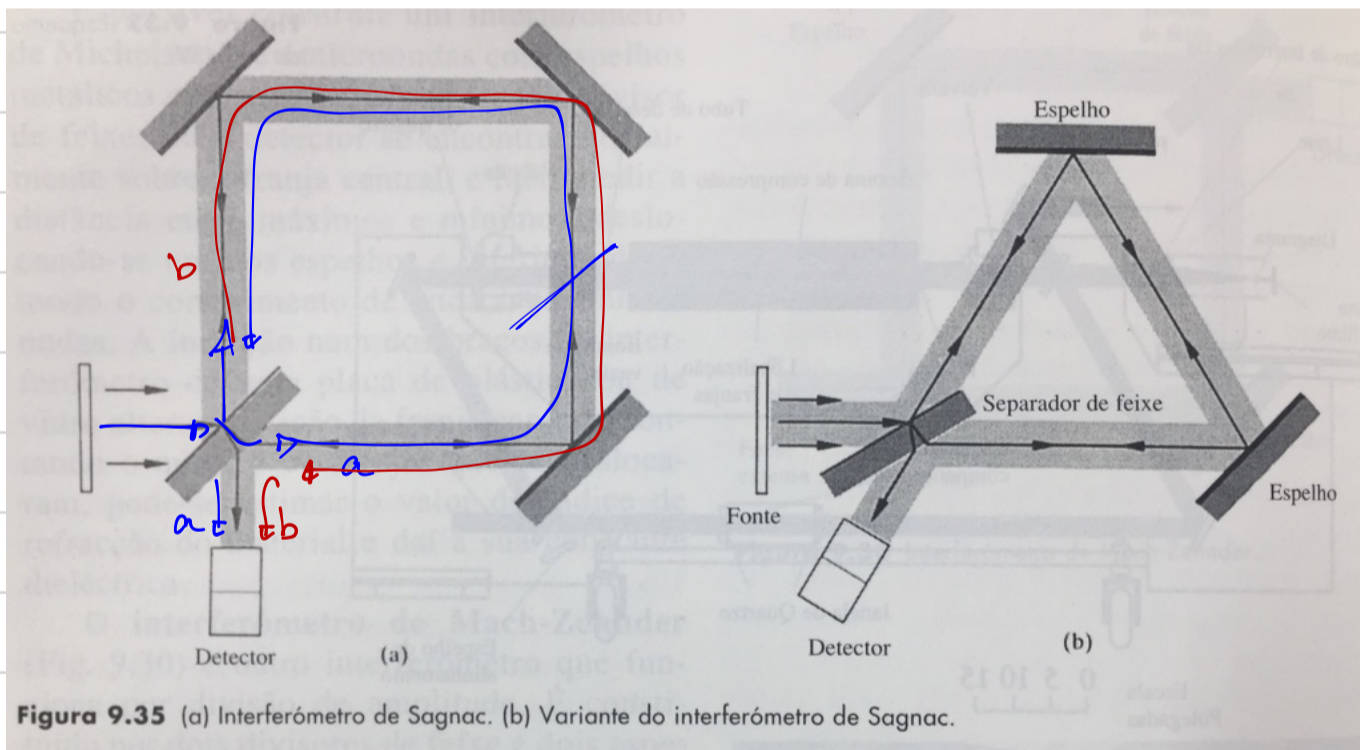
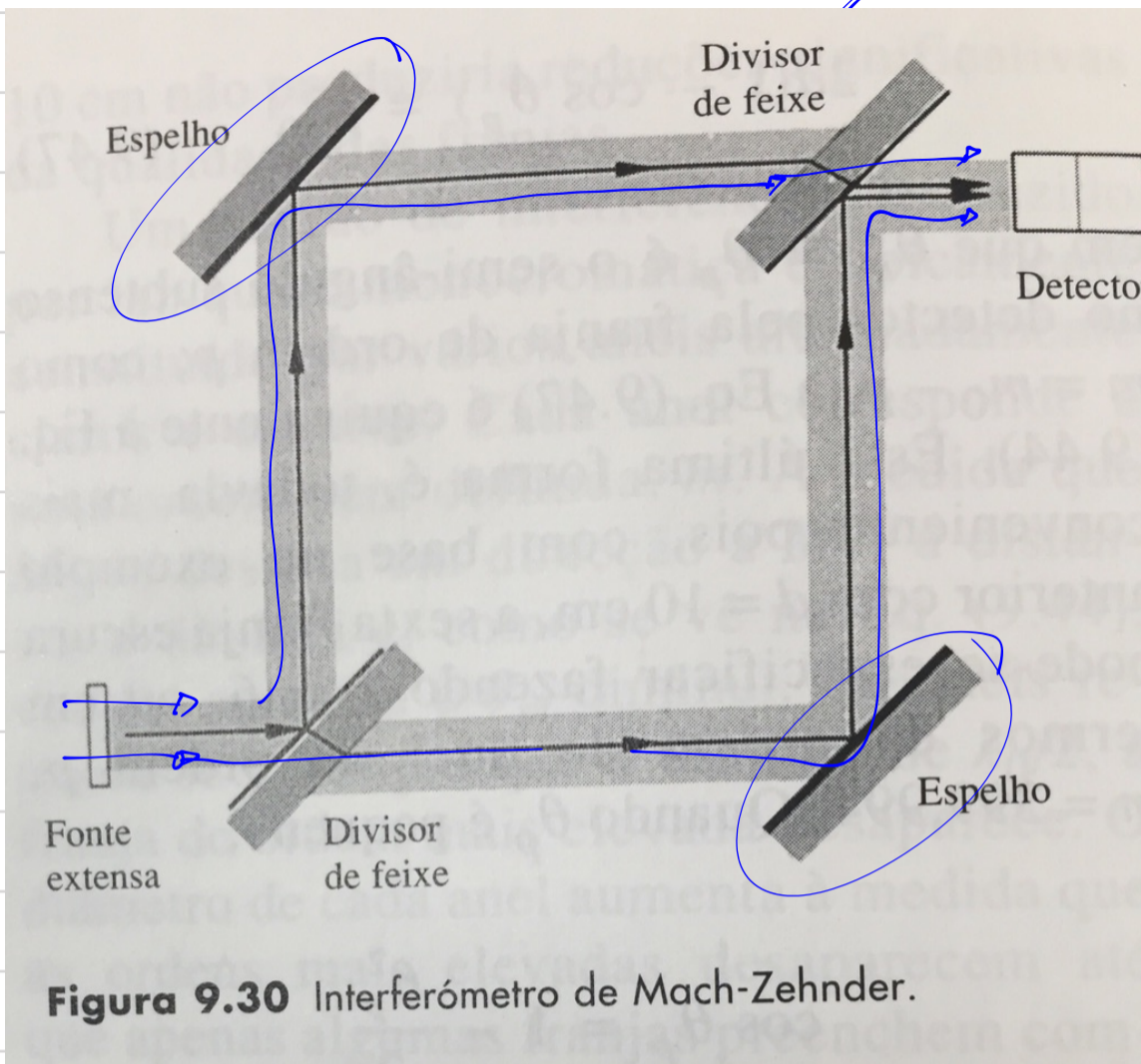
$2d \cos \theta = m \lambda$ $m = 0, \pm 1, \pm 2, \dots$ ordens de
 Int. Destrutiva

$2d \cos \theta = (m + \frac{1}{2}) \lambda$ Int. Construtiva luz

Atividade Prática

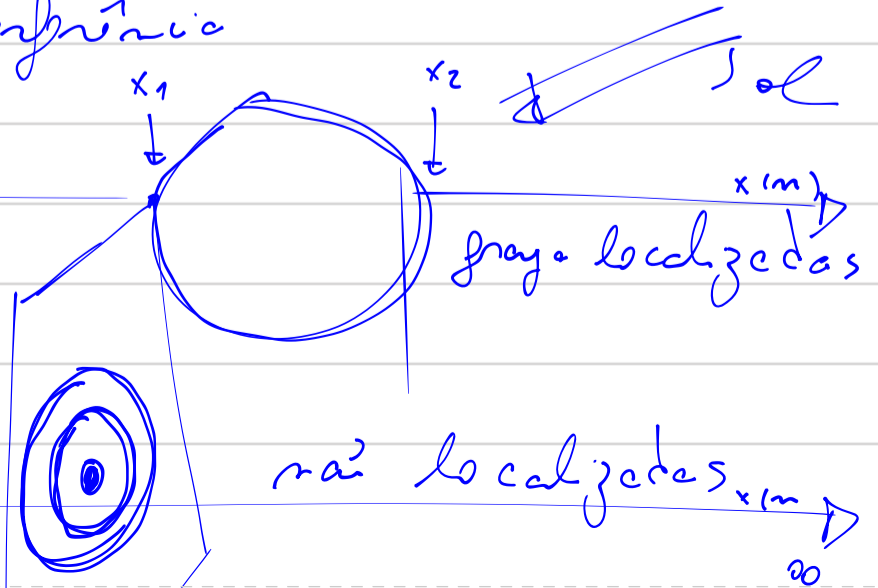
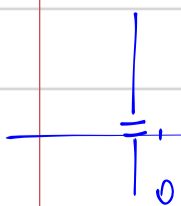


Int. interferência de Mach-Zehnder



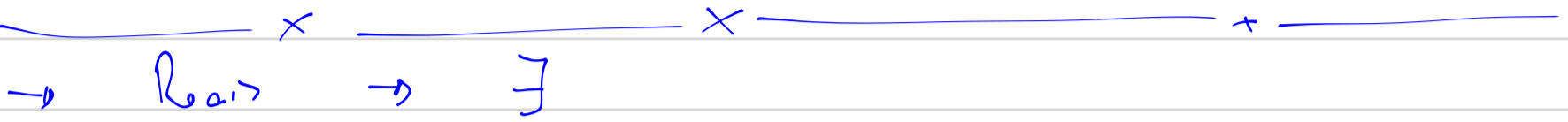
Frangos de Interferência

- localizados
- não localizados



$$X_{bs} = X_1 \text{ e } X_2$$

$$X_0 = 0 < X_0 < \infty$$



→ Reais → \exists
→ Virtuais → \nexists

