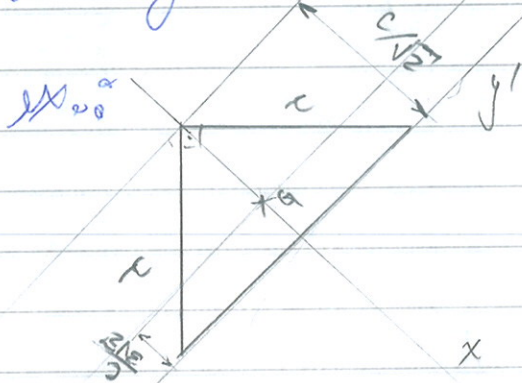


Nome: Guilherme Oliveira Rodrigues, nup: 8043121



eixos centrais?  
momentos centrais?

Por simetria  $I_x$  é um eixo central de inércia, com  
isso, temos:

$$I_x = 2 \cdot \left( \frac{c\sqrt{2}}{2} \right) \cdot \left( \frac{c}{\sqrt{2}} \right)^3 = \frac{c^4}{24}$$

$$I_y = \frac{c\sqrt{2}}{36} \cdot \left( \frac{c}{\sqrt{2}} \right)^3 = \frac{c^4}{72}$$

$$\therefore I_1 = \frac{c^4}{24}, \quad I_2 = \frac{c^4}{72}$$