

Parte A

Fig. 3 Box plot graphic comparing the percentage of residual root filling material left in the canal after retreatment using R-Endo instruments, with or without additional use of SAF, in the cold lateral condensation (CLC) and vertical condensation (VC) groups

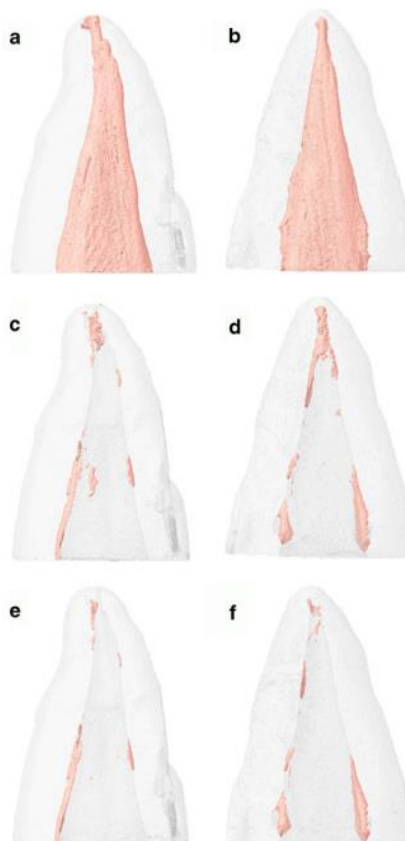
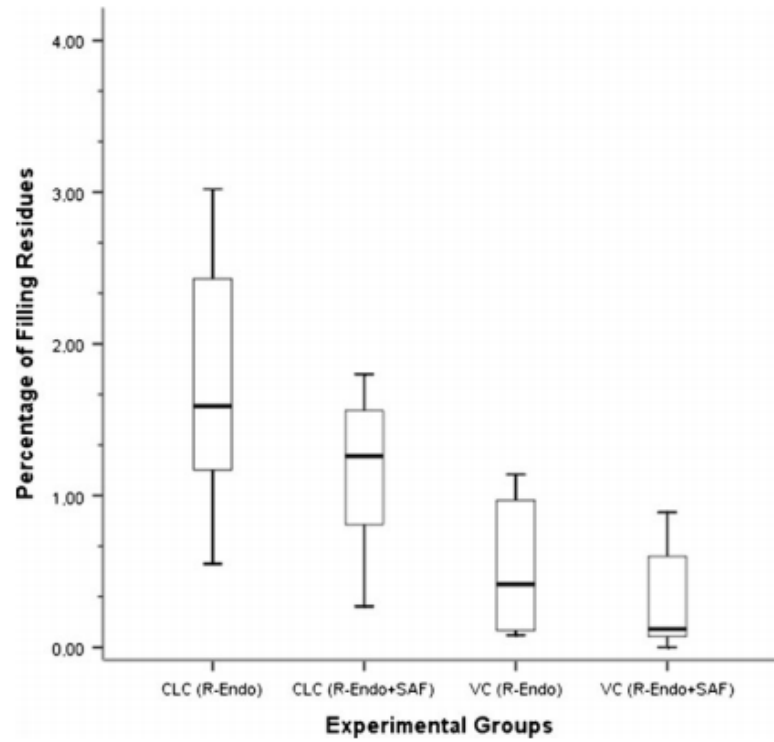


Fig. 2 Representative three-dimensional reconstructions of two one-rooted maxillary premolars with oval-shaped canals filled with cold lateral condensation (a) and vertical condensation (b) techniques. Root filling material is depicted in pink; c, d remaining root canal filling material after retreatment procedure with R-Endo instruments; e, f remaining root canal filling material after additional use of SAF

Parte B

Table 3: Comparison of plaque index between two groups using unpaired t-test							
Component	Mean**	SD****	N***	t-value	df*	p-value	Significance*****
B1	1.2035	0.2872	220	12.3616	448	<0.0001	S
B2	1.5733	0.2823	230				

*Degree of freedom; **Mean score of plaque index for all five visits time intervals; ***Number of observations; ****Mean standard deviation score of plaque index for all five visits time intervals; *****Significant

Table 4: Comparison of gingival index between two groups using unpaired t-test							
Component	Mean**	SD****	N***	t-value	df*	p-value (5% level)	Significance*****
B1	1.4016	0.3082	220	6.7751	448	<0.0001	S
B2	1.5733	0.2246	230				

*Degree of freedom; **Mean score of plaque index for all five visits time intervals; ***Number of observations; ****Mean standard deviation score of plaque index for all five visits time intervals; *****Significant