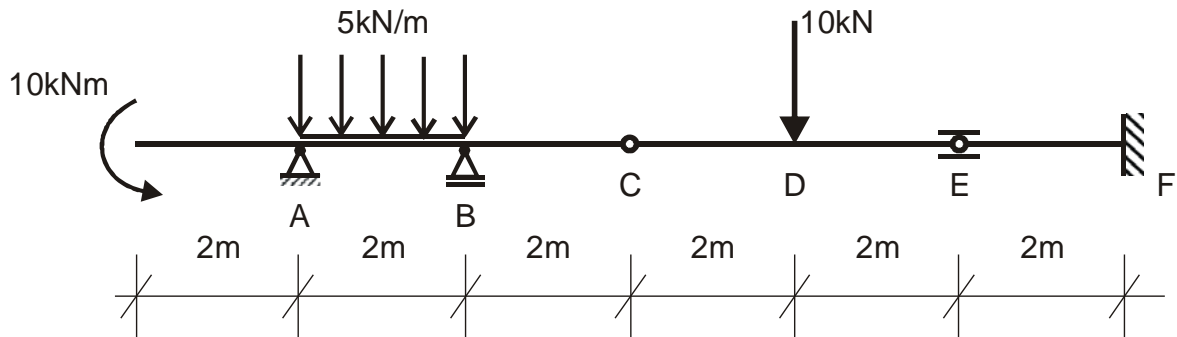


nome.....n°USP.....

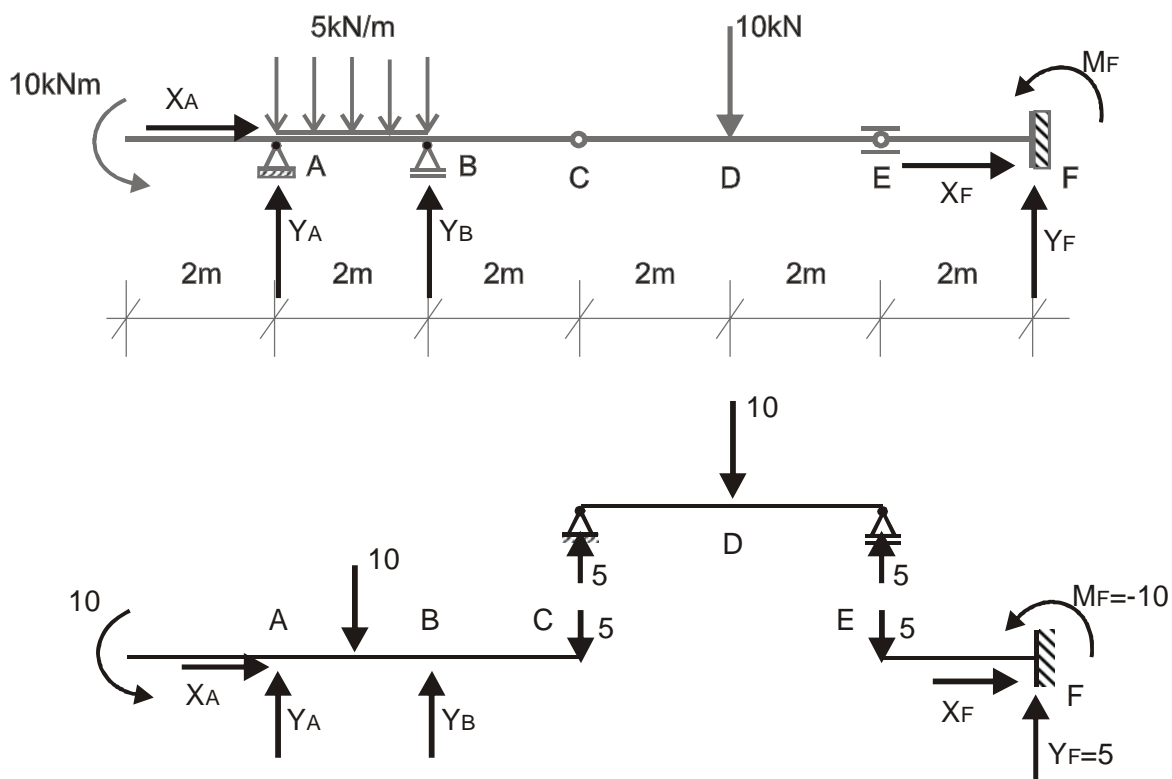
Questão 1 (3,5) Na viga Gerber da figura:

- a) Determine as reações de apoio em A, B e F;
- b) Trace o diagrama dos momentos fletores.



Resposta:

a) (1,5)



$$10 - 10 \cdot 1 + Y_B \cdot 2 - 5 \cdot 4 = 0 \quad \longrightarrow \quad Y_B = 10$$

$$10 - Y_A \cdot 2 + 10 \cdot 1 - 5 \cdot 2 = 0 \quad \longrightarrow \quad Y_A = 5$$

b) (2,0)

