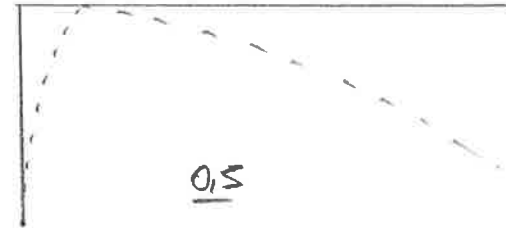
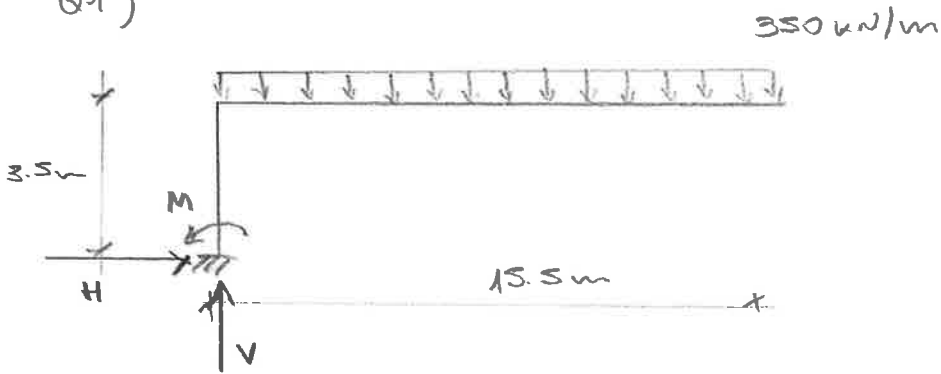


Q1)



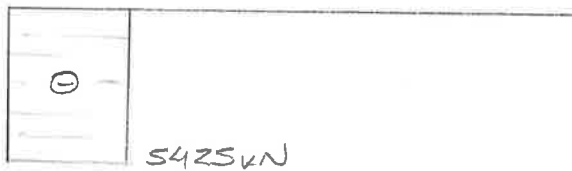
a)  $\sum F_H = 0: H = 0$  0,2

0,4  $\sum F_Y = 0: V - 350 \cdot 15,5 = 0$   
 $V = 5425 \text{ kN}$

0,4  $\sum M = 0: M - 350 \cdot 15,5 \cdot \frac{15,5}{2} = 0 \Rightarrow M = 42043,8 \text{ kN}\cdot\text{m}$

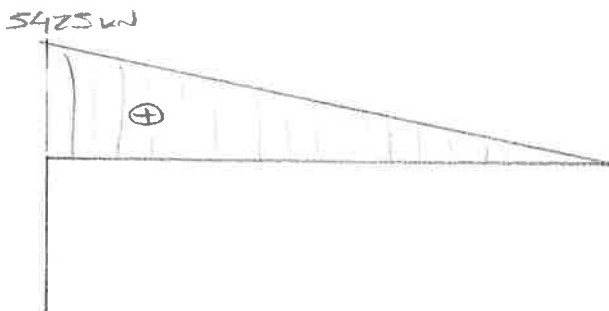
b)

0,3



DEU

0,5



DEC

0,7



DEM

42043

