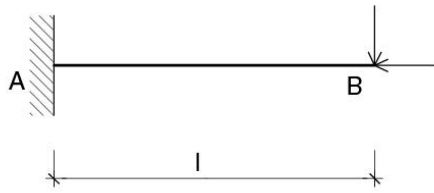


Resolução:

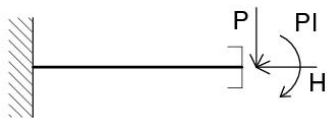
2



$$N = -H \text{ (compressão)}$$

$$V = P \text{ (sentido horário)}$$

$$M = -P \cdot x'$$

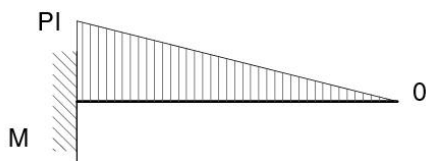
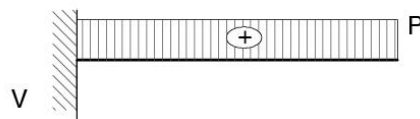
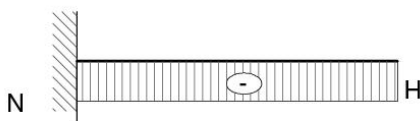


$$M(0) = 0$$

$$M(l) = -P \cdot l$$

(tracionando as fibras superiores)

cut



deformada

a concavidade da linha elástica é voltada para o lado comprimido da barra

e a tangente à linha elástica no engastamento é horizontal.