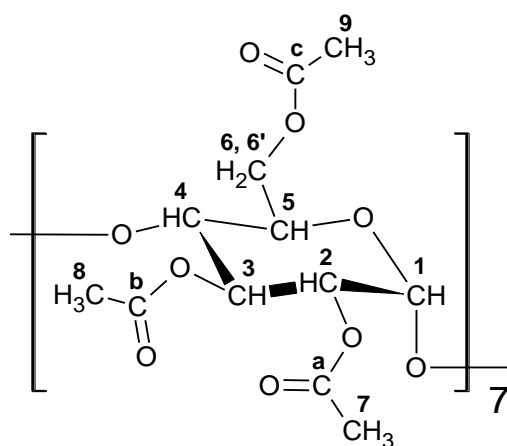


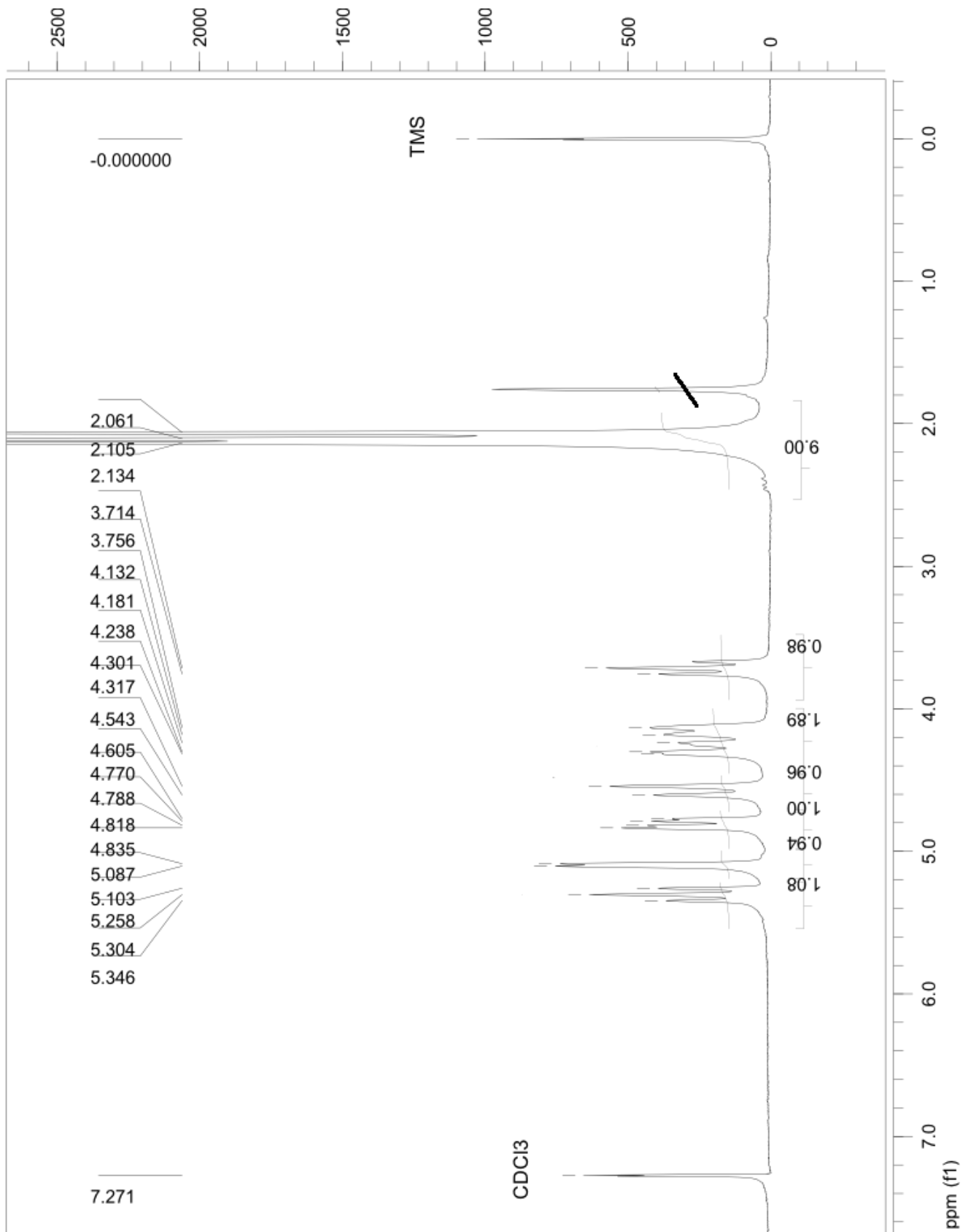
## $\beta$ -Ciclodextrina Acetilada (CDPA)

### Espectros de RMN e de Infravermelho

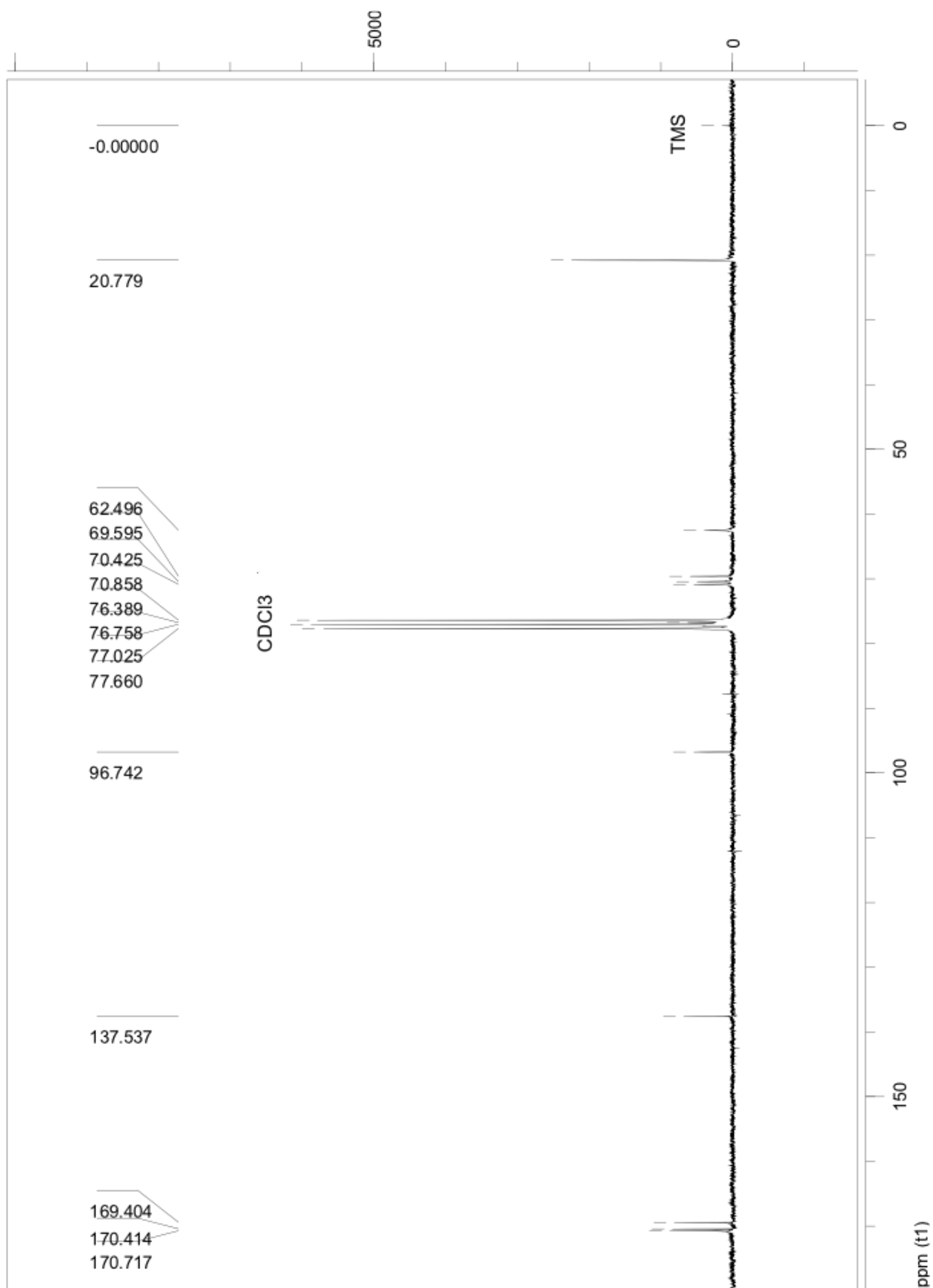
Utilize a numeração apresentada no esquema da molécula a seguir para a atribuição dos sinais de RMN de  $H^1$  e de  $C^{13}$



Espectro de  $^1\text{H}$ -RMN ( $\text{CDCl}_3$ , 0,05% TMS, ppm)



Espectro de  $^{13}\text{C}$ -RMN ( $\text{CDCl}_3$ , 0,05% TMS, ppm)



# Espectro de Infravermelho da CDPA

