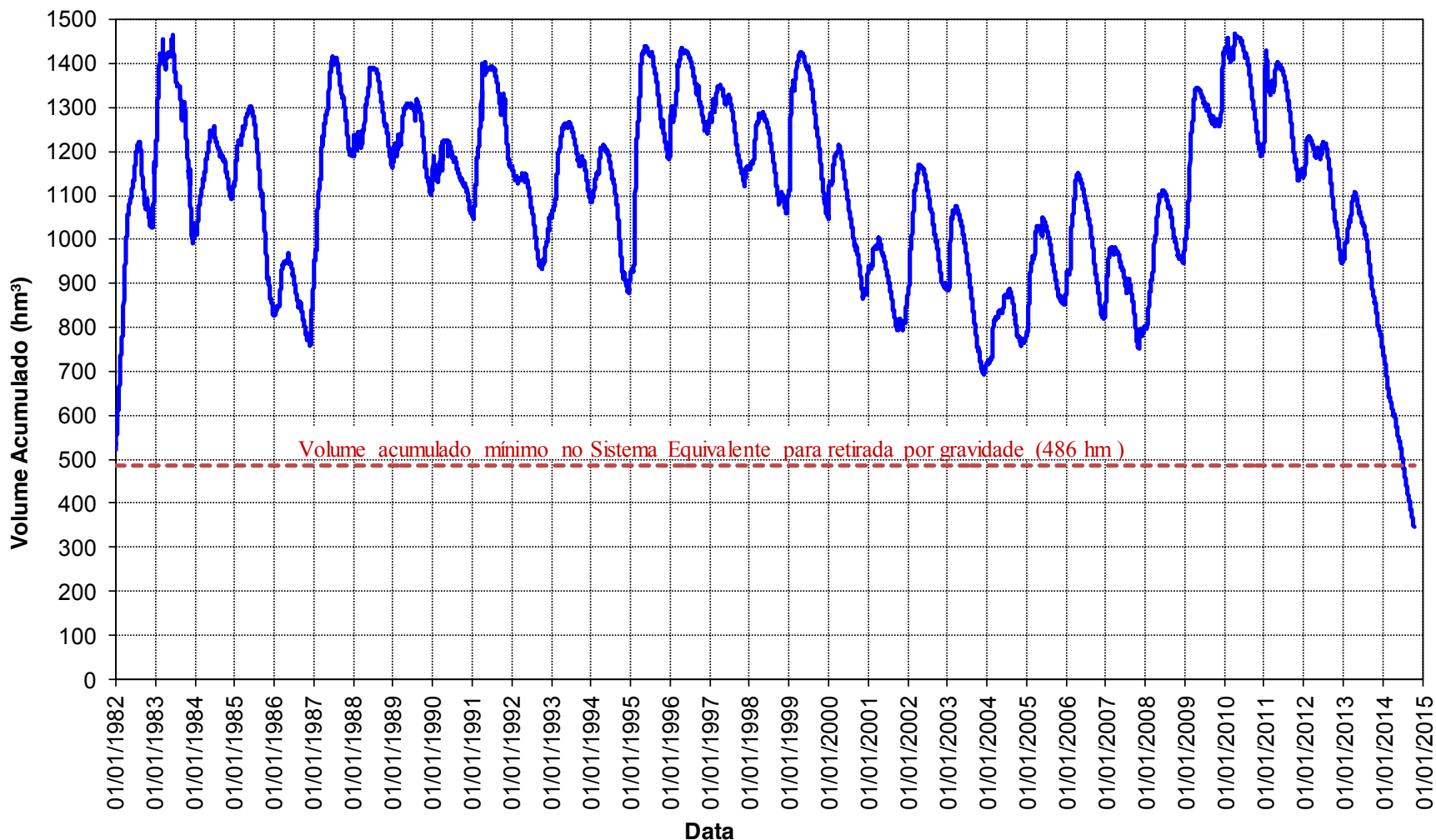
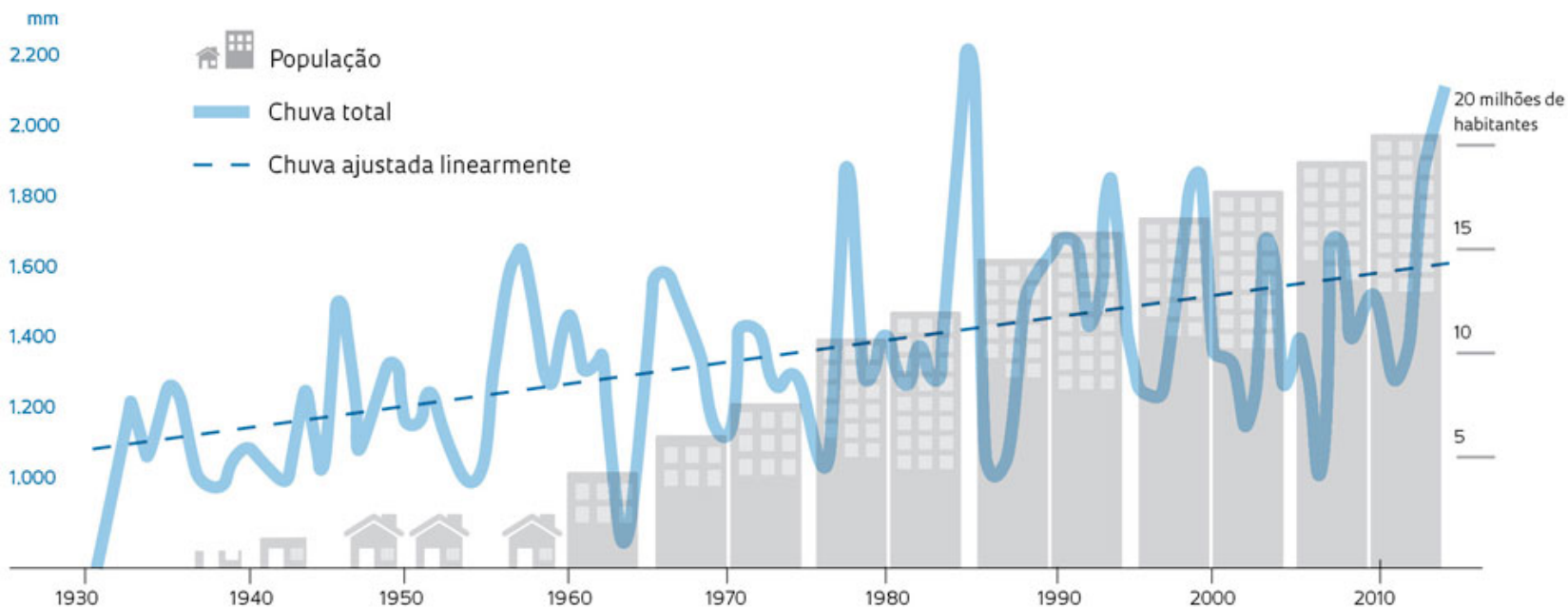


EVOLUÇÃO DO VOLUME ACUMULADO NO SISTEMA EQUIVALENTE - a partir de 1982

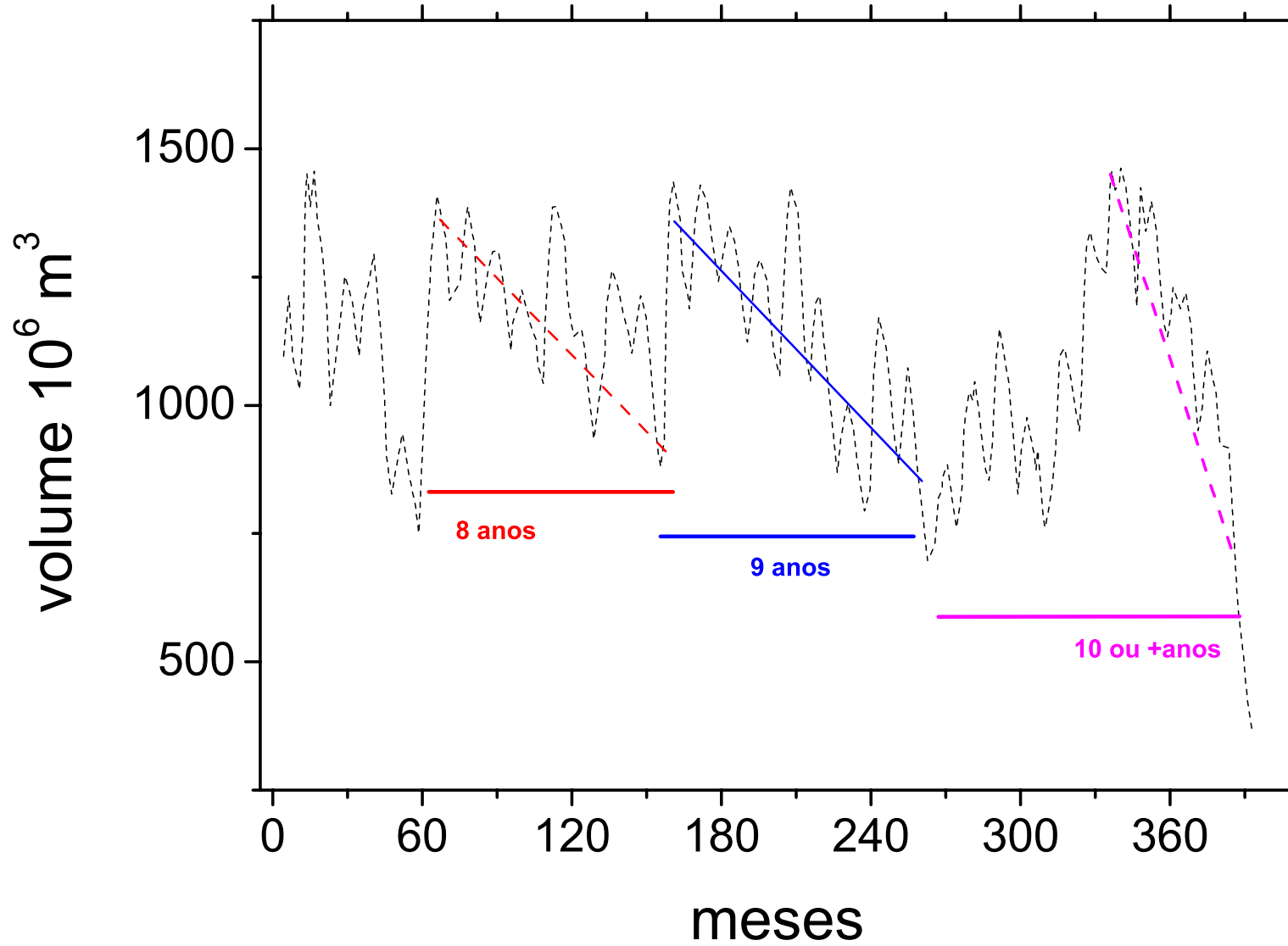


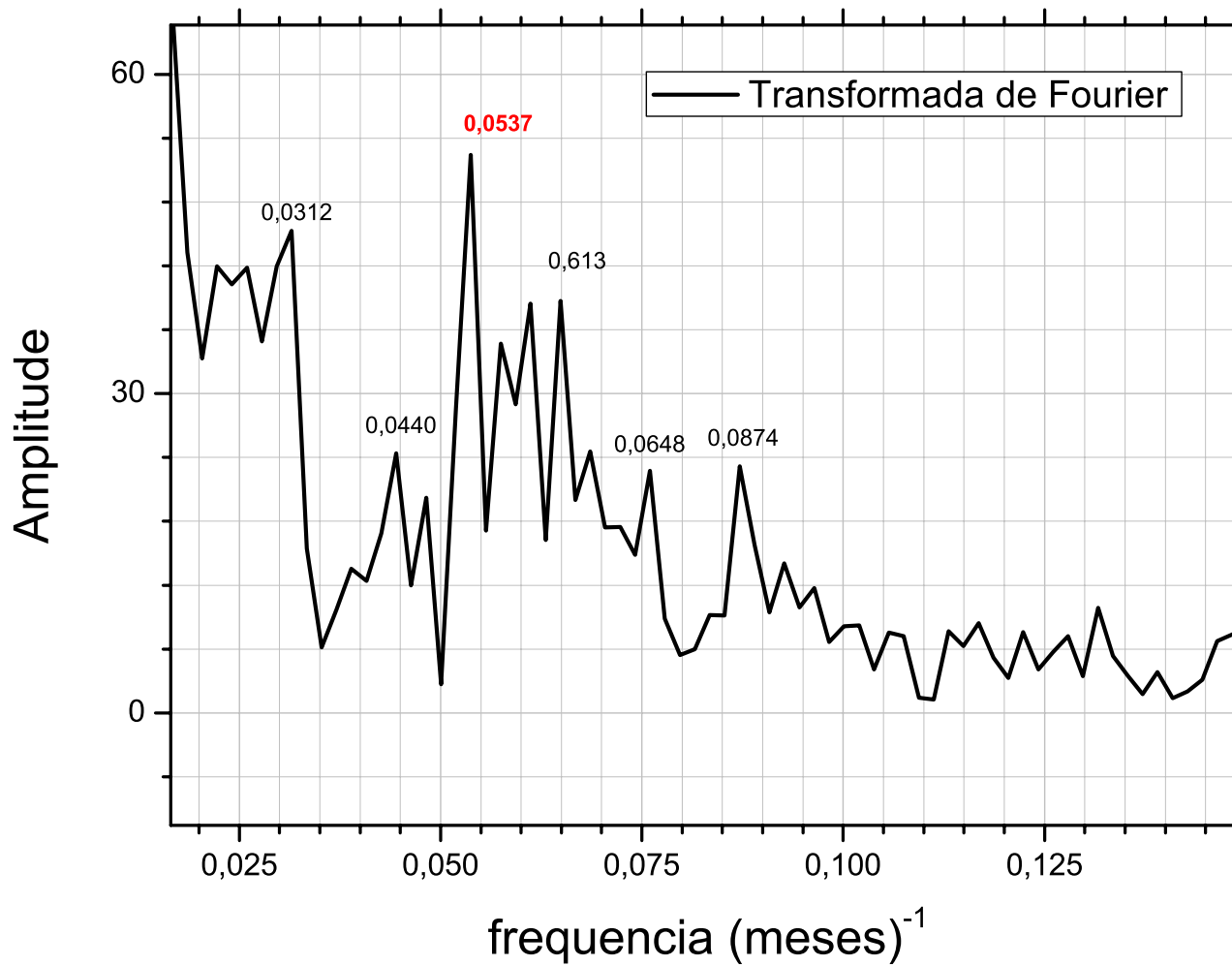
Uma metrópole cada vez mais úmida

Evolução do total anual de chuvas na Região Metropolitana de São Paulo



<http://revistapesquisa.fapesp.br/2012/05/11/da-garoa-a-tempestade/>





$$T = 2\pi / \omega$$

$$\omega \cong 0,06 \text{ mes}^{-1}$$

$$T \cong 105 \text{ meses} \cong 8,7 \text{ anos}$$