

RMN H<sup>1</sup>

3.856

2.434



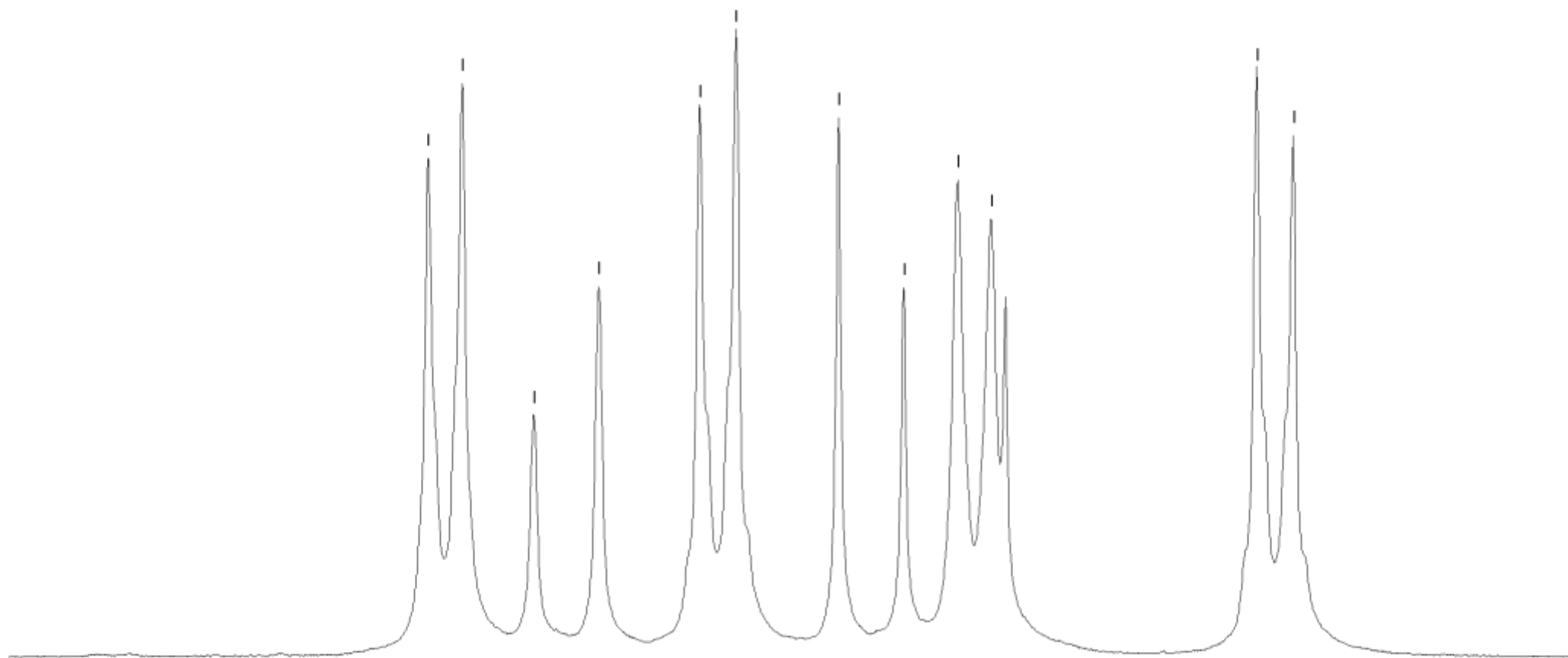
4.3 4.2 4.1 4.0 3.9 3.8 3.7 3.6 3.5 3.4 3.3 3.2 3.1 3.0 2.9 2.8 2.7 2.6 2.5 2.4 2.3 2.2 2.1 ppm

3.05

3.00

RMN H<sup>1</sup>

— 7.953  
— 7.912  
— 7.826  
— 7.748  
— 7.627  
— 7.583  
— 7.460  
— 7.382  
— 7.317  
— 7.277  
  
— 6.958  
— 6.914



8.4 8.3 8.2 8.1 8.0 7.9 7.8 7.7 7.6 7.5 7.4 7.3 7.2 7.1 7.0 6.9 6.8 6.7 ppm

1.81

1.00

2.01

1.11

1.74

1.87

RMN C<sup>13</sup>

