

## **Technical Note**

# **Design Kit**

**(for ANSOFT Designer™ / Nexxim™)**

# **User's Manual**

---

Document No. PX10401EJ03V0TN (3rd edition)

Date Published December 2005 CP(K)

© NEC Compound Semiconductor Devices, Ltd. 2003, 2005  
Printed in Japan

**Ansoft Designer and Nexxim are either registered trademarks or trademarks of Ansoft Corporation in the United States and/or other countries.**

**Windows and Windows XP are either registered trademarks or trademarks of Microsoft Corporation in the United States and/or other countries.**

When the product(s) listed in this document is subject to any applicable import or export control laws and regulation of the authority having competent jurisdiction, such product(s) shall not be imported or exported without obtaining the import or export license.

- **The information in this document is current as of December, 2005. The information is subject to change without notice. For actual design-in, refer to the latest publications of NEC's data sheets or data books, etc., for the most up-to-date specifications of NEC semiconductor products. Not all products and/or types are available in every country. Please check with an NEC sales representative for availability and additional information.**
  - No part of this document may be copied or reproduced in any form or by any means without prior written consent of NEC. NEC assumes no responsibility for any errors that may appear in this document.
  - NEC does not assume any liability for infringement of patents, copyrights or other intellectual property rights of third parties by or arising from the use of NEC semiconductor products listed in this document or any other liability arising from the use of such products. No license, express, implied or otherwise, is granted under any patents, copyrights or other intellectual property rights of NEC or others.
  - Descriptions of circuits, software and other related information in this document are provided for illustrative purposes in semiconductor product operation and application examples. The incorporation of these circuits, software and information in the design of customer's equipment shall be done under the full responsibility of customer. NEC assumes no responsibility for any losses incurred by customers or third parties arising from the use of these circuits, software and information.
  - While NEC endeavours to enhance the quality, reliability and safety of NEC semiconductor products, customers agree and acknowledge that the possibility of defects thereof cannot be eliminated entirely. To minimize risks of damage to property or injury (including death) to persons arising from defects in NEC semiconductor products, customers must incorporate sufficient safety measures in their design, such as redundancy, fire-containment, and anti-failure features.
  - NEC semiconductor products are classified into the following three quality grades:  
"Standard", "Special" and "Specific". The "Specific" quality grade applies only to semiconductor products developed based on a customer-designated "quality assurance program" for a specific application. The recommended applications of a semiconductor product depend on its quality grade, as indicated below. Customers must check the quality grade of each semiconductor product before using it in a particular application.  
"Standard": Computers, office equipment, communications equipment, test and measurement equipment, audio and visual equipment, home electronic appliances, machine tools, personal electronic equipment and industrial robots  
"Special": Transportation equipment (automobiles, trains, ships, etc.), traffic control systems, anti-disaster systems, anti-crime systems, safety equipment and medical equipment (not specifically designed for life support)  
"Specific": Aircraft, aerospace equipment, submersible repeaters, nuclear reactor control systems, life support systems and medical equipment for life support, etc.
- The quality grade of NEC semiconductor products is "Standard" unless otherwise expressly specified in NEC's data sheets or data books, etc. If customers wish to use NEC semiconductor products in applications not intended by NEC, they must contact an NEC sales representative in advance to determine NEC's willingness to support a given application.
- (Note)
- (1) "NEC" as used in this statement means NEC Corporation, NEC Compound Semiconductor Devices, Ltd. and also includes its majority-owned subsidiaries.
  - (2) "NEC semiconductor products" means any semiconductor product developed or manufactured by or for NEC (as defined above).

M8E 00.4-0110

### Major Revisions in This Edition

| Page       | Description  |
|------------|--|
| Throughout | Addition of Nexxim   |
| p.6        | <b>2. DESIGN KIT DOWNLOAD AND INSTALLATION</b><br>Change of folder configuration created after unzipping the downloaded file |
| p.11       | <b>3. DESIGN KIT APPLICATION (COMMON TO Designer AND Nexxim)</b><br>Addition of (2) How to use S-parameter library           |
| p.13       | Addition of <b>4. LAYOUT USING FOOTPRINT INFORMATION</b>   |

The mark ★ shows major revised points.

## CONTENTS

|  |    |
|--|----|
| 1. INTRODUCTION .....  | 5  |
| 2. DESIGN KIT DOWNLOAD AND INSTALLATION.....                   | 6  |
| 3. DESIGN KIT APPLICATION (COMMON TO Designer AND Nexxim)..... | 7  |
| ★ 4. LAYOUT USING FOOTPRINT INFORMATION.....                   | 13 |
| 5. DEMONSTRATION.....  | 14 |

## ★ 1. INTRODUCTION

This manual is intended for users who use the design kit (in which the parameters of NEC Compound Semiconductor Devices, Ltd. products are supplied for ANSOFT Designer and Nexxim: design kit hereinafter). This manual describes how to use the design kit, from installation to performing simulation on the schematic screen of the Designer or Nexxim.

Although the required operations can basically be performed by operating the design kit in accordance with the figures in this manual, some operations may differ partially depending on the environment used.

This manual is described based on the following environment. See the manuals for the PC, etc. used in the actual environment.

### <Environment used in this manual>

|  |  |
|--|--|
| Platform   | :PC  |
| OS   | :Windows™ 2000 <sup>Note</sup> , Windows XP™ |
| ANSOFT Designer or Nexxim                        | :Version2.2                                  |
| ANSOFT Designer or Nexxim installation directory | :C:/Ansoft/Designer2                         |

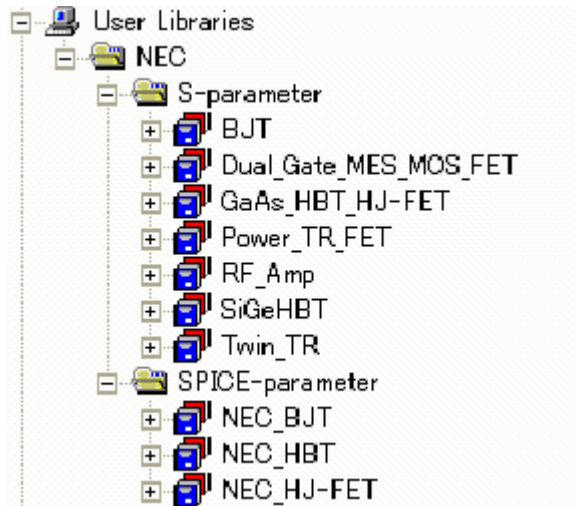
**Note** Recommended

## ★ 2. DESIGN KIT DOWNLOAD AND INSTALLATION

Download the design kit and unzip it using the compression/extraction application included with the kit.

- Unzip destination C:/Ansoft/Designer2/userlib
- After unzipping the downloaded file, the following folder will be created.  
C:/Ansoft/Designer2/userlib/NEC

Library configuration



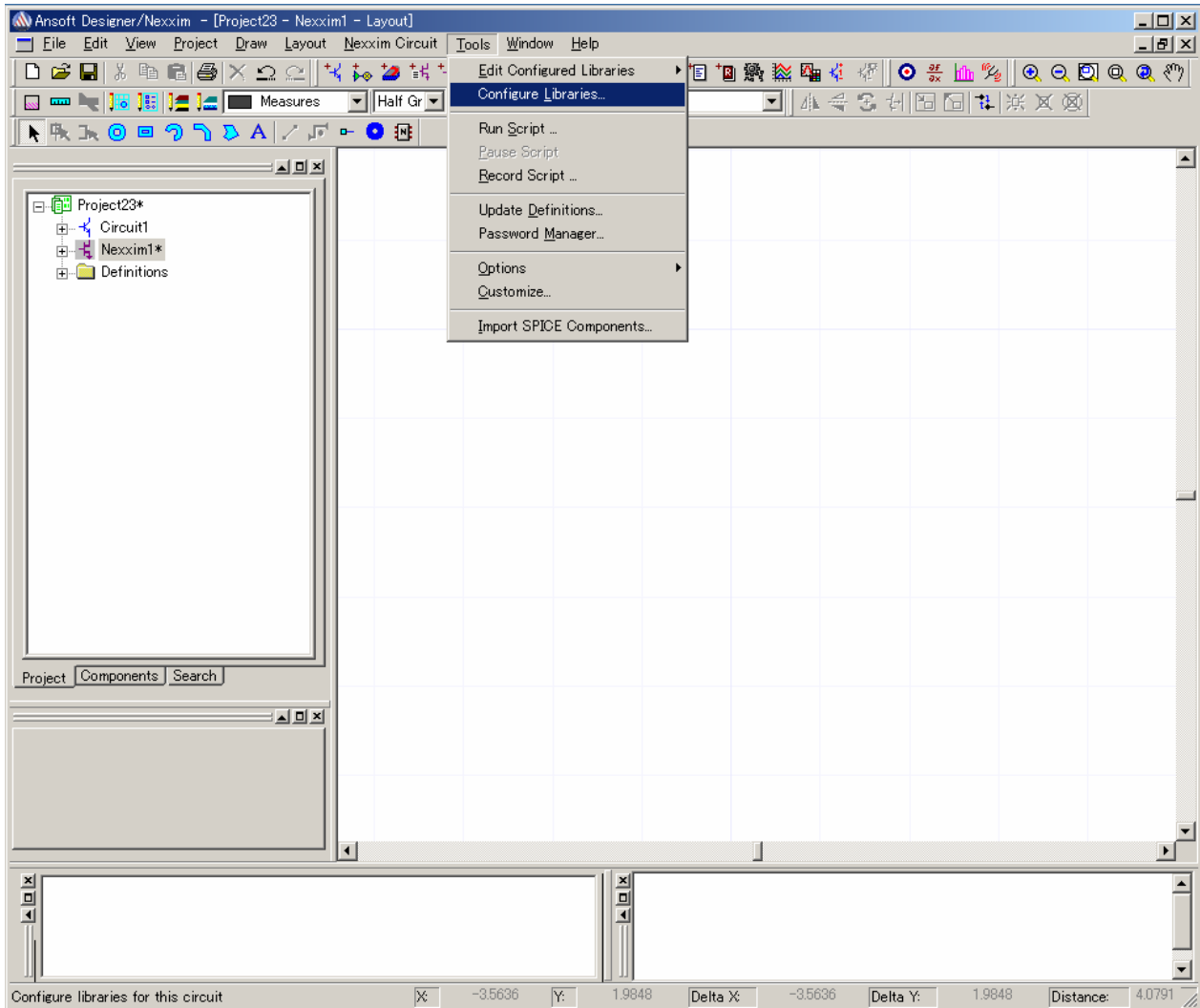
**Caution** NEC\_HJ-FET in the SPICE-parameter folder can be used for Nexxim only.

### 3. DESIGN KIT APPLICATION (COMMON TO Designer AND Nexxim)

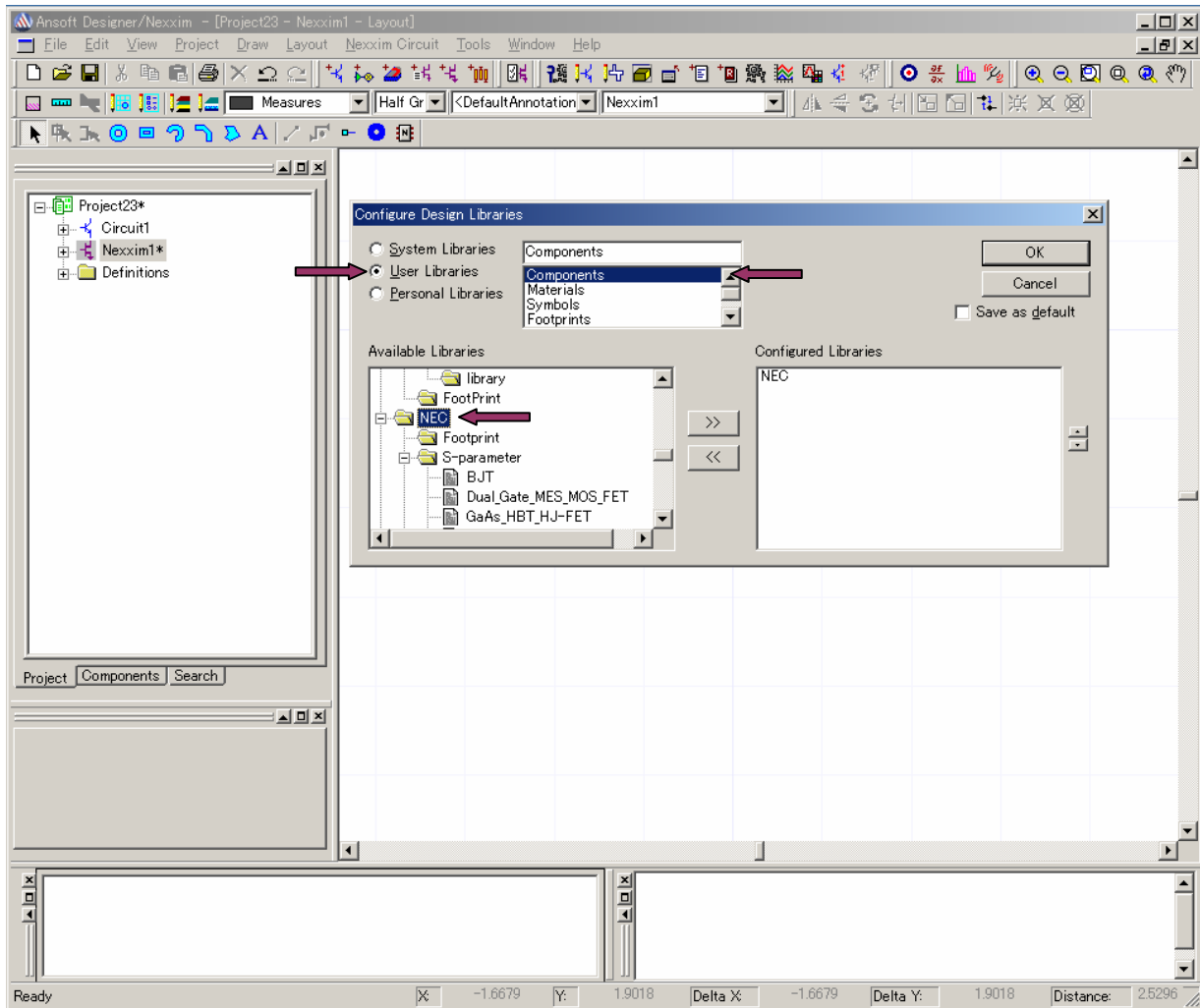
#### (1) Startup of Designer or Nexxim

<1> Create a Circuit Design or Nexxim Circuit Design folder for a new project (e.g., Project 1).

Execute [Configure Libraries...] in the [Tools] menu.

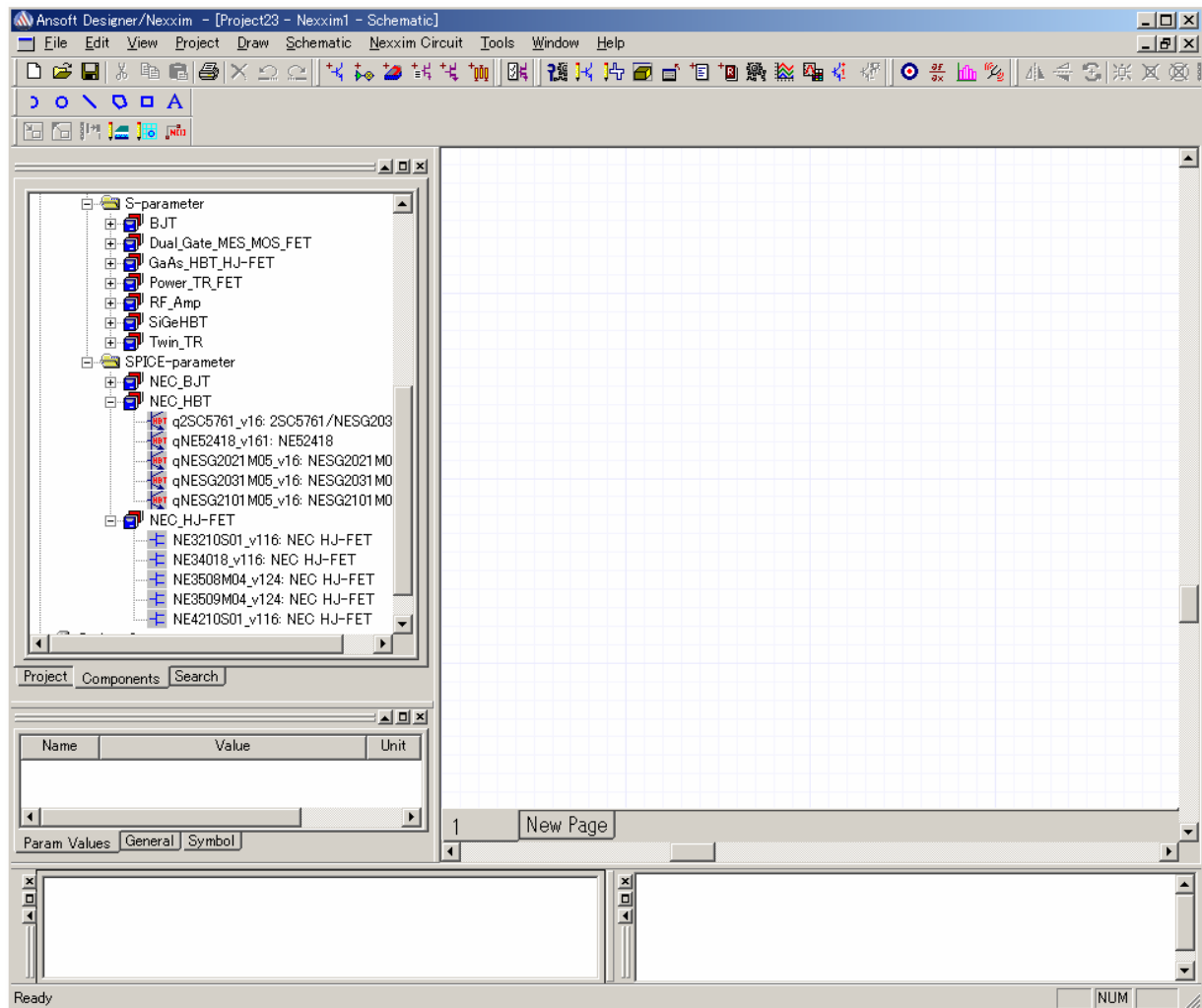


- <2> Select the [User Libraries] option button, and then
- select "Components" from the item list, select the NEC folder and click the >> button;
  - "NEC" is then displayed in the right-hand screen.
  - select "Symbols" from the item list, select the NEC folder again and click the >> button;
  - "NEC" is then displayed in the right-hand screen.
  - select "Footprints" from the item list, select the NEC folder again and click the >> button;
  - "NEC" is then displayed in the right-hand screen.

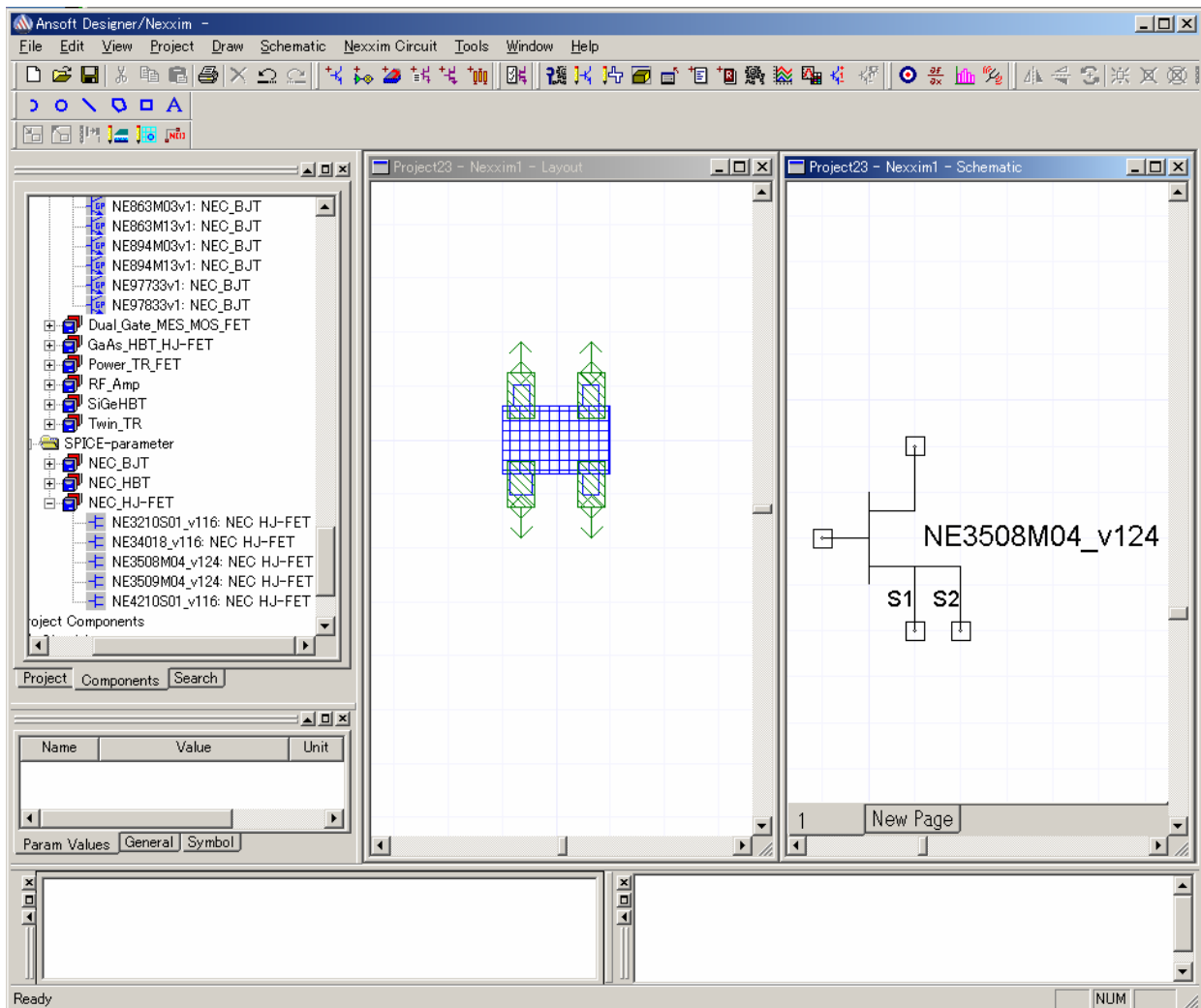




<3> All of the NEC\_S-parameter and NEC\_SPICE-parameter library components are displayed in the left-hand screen.



<4> Double-click a part number. The corresponding device component will then be displayed on the circuit diagram.

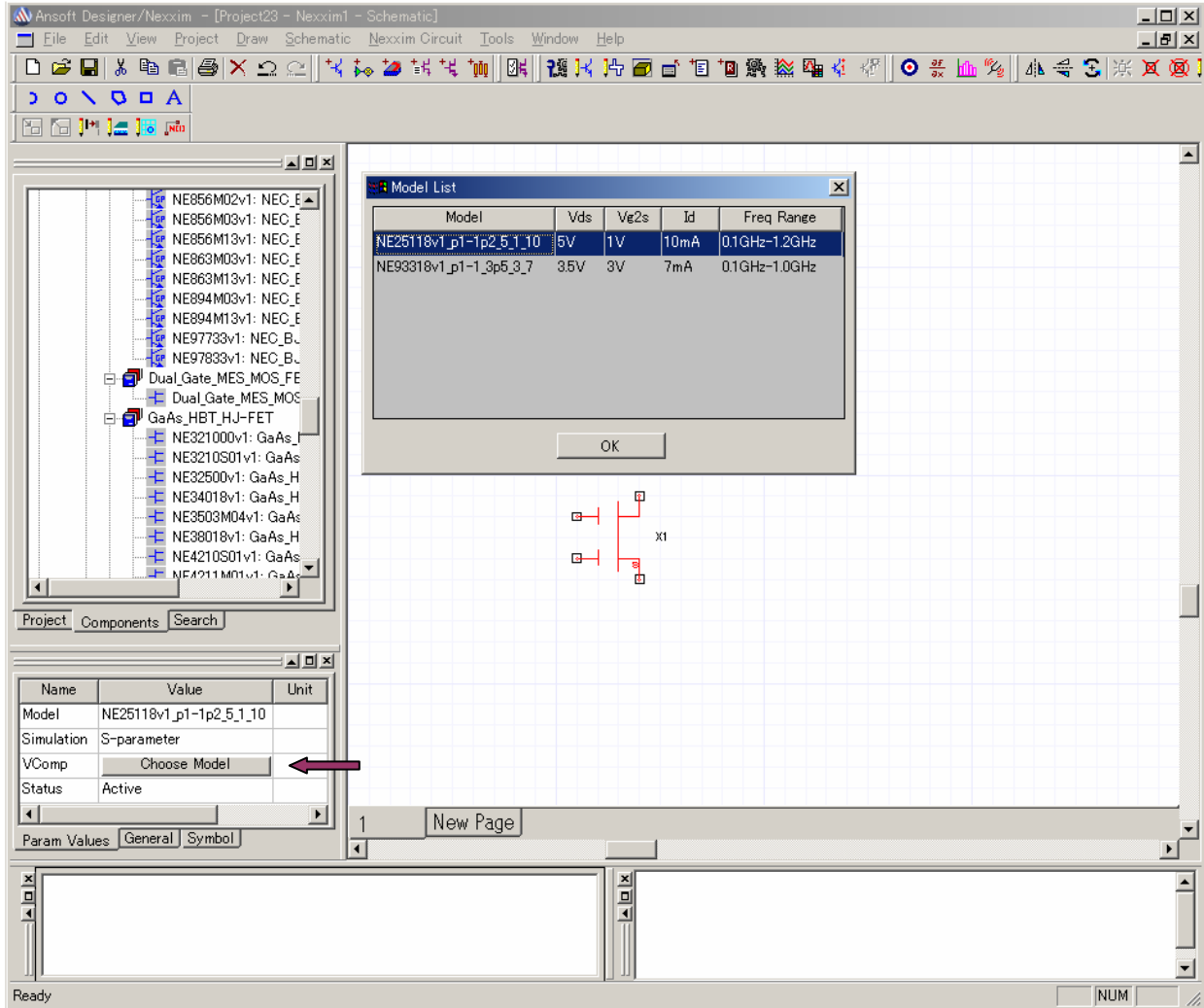


★ (2) How to use S-parameter library

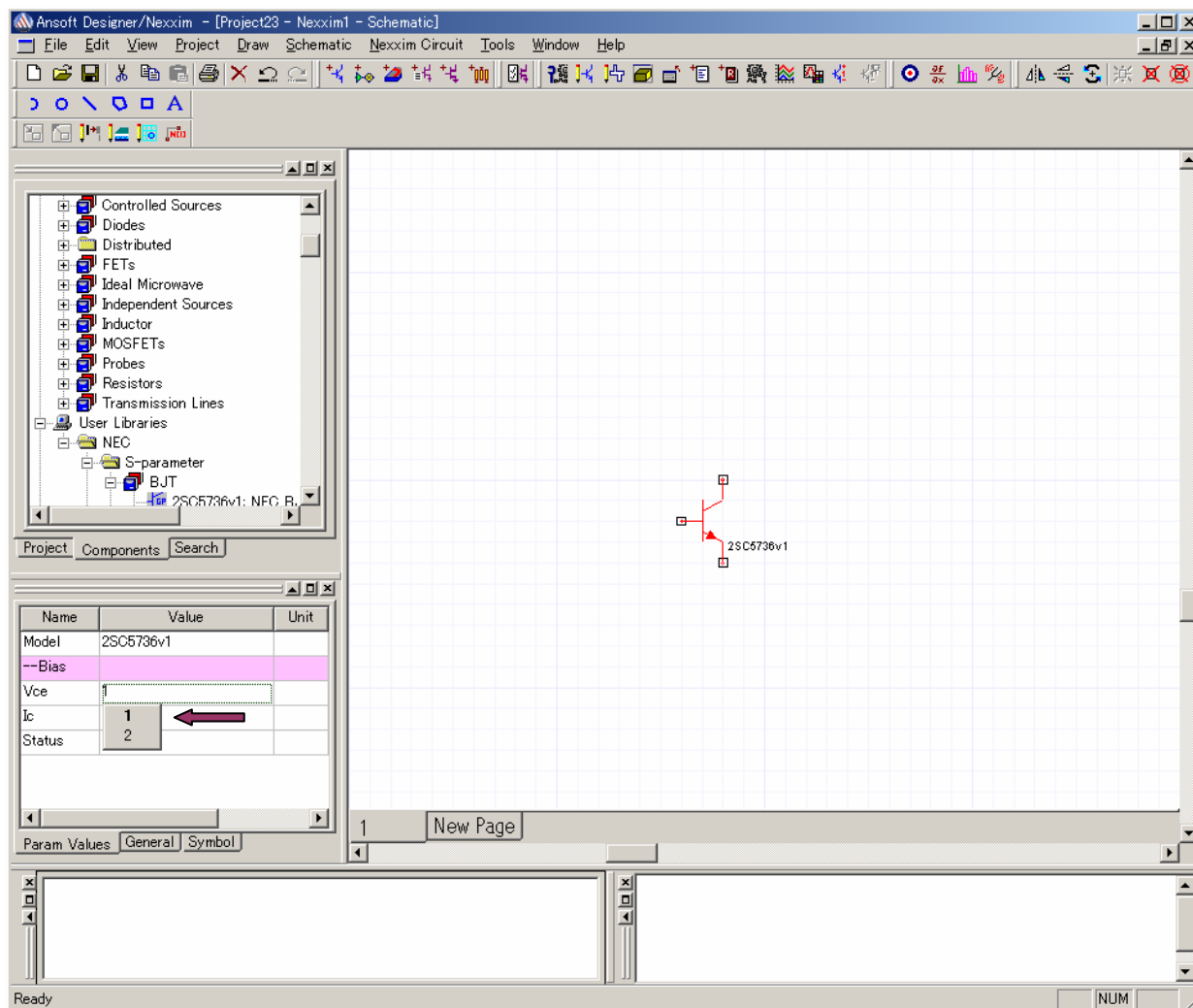
The S-parameter library is divided into two structures, the uses of which differ.

Selection of a device or bias condition can be performed using items in the Property window that is displayed when a device component is placed on the circuit diagram.

<1> Call an S-parameter by clicking the [Choose Bias] or [Choose Model] button.



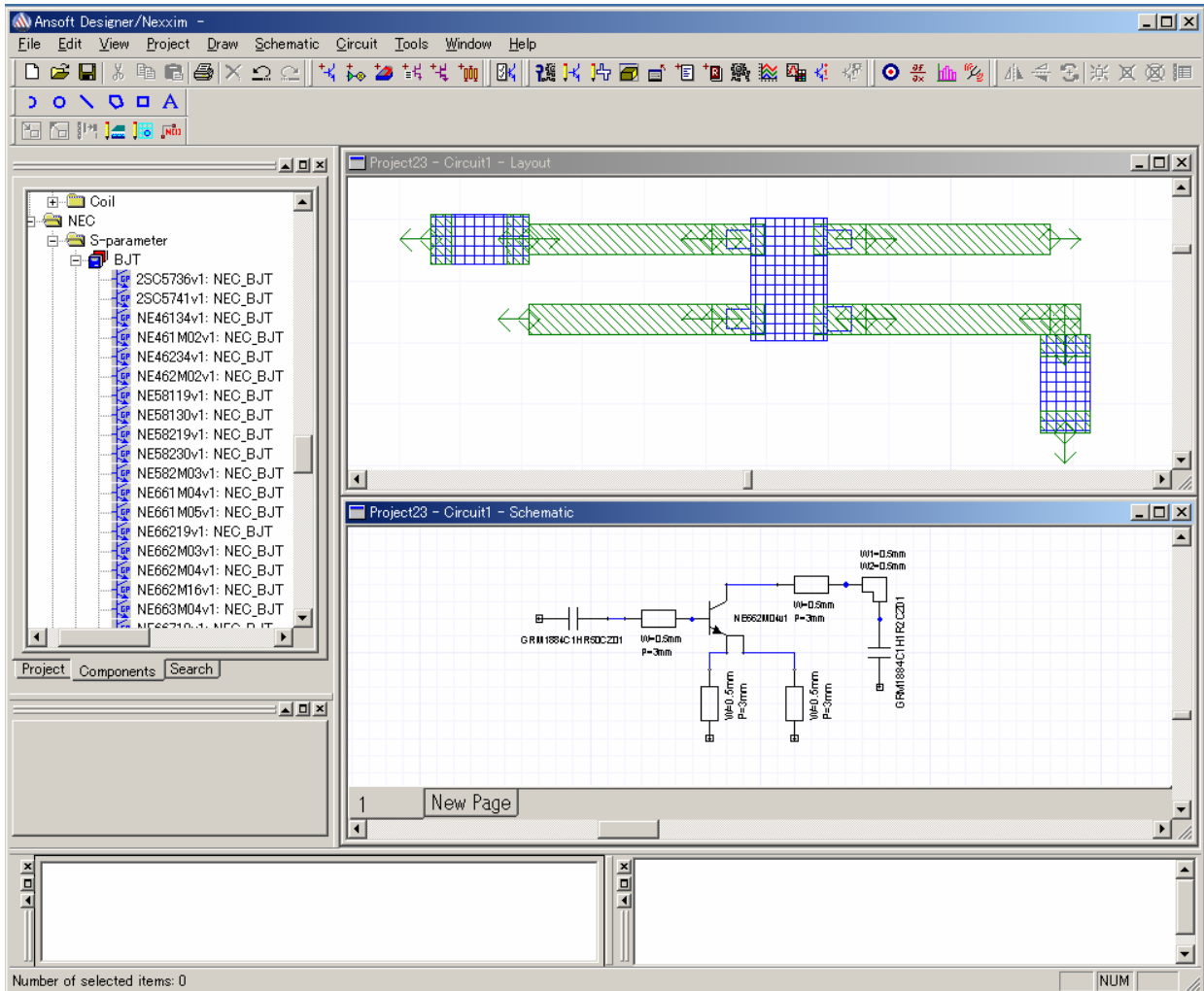
<2> Select the bias conditions such as  $V_{ce}$  and  $I_c$  to call the S-parameter.



## ★ 4. LAYOUT USING FOOTPRINT INFORMATION

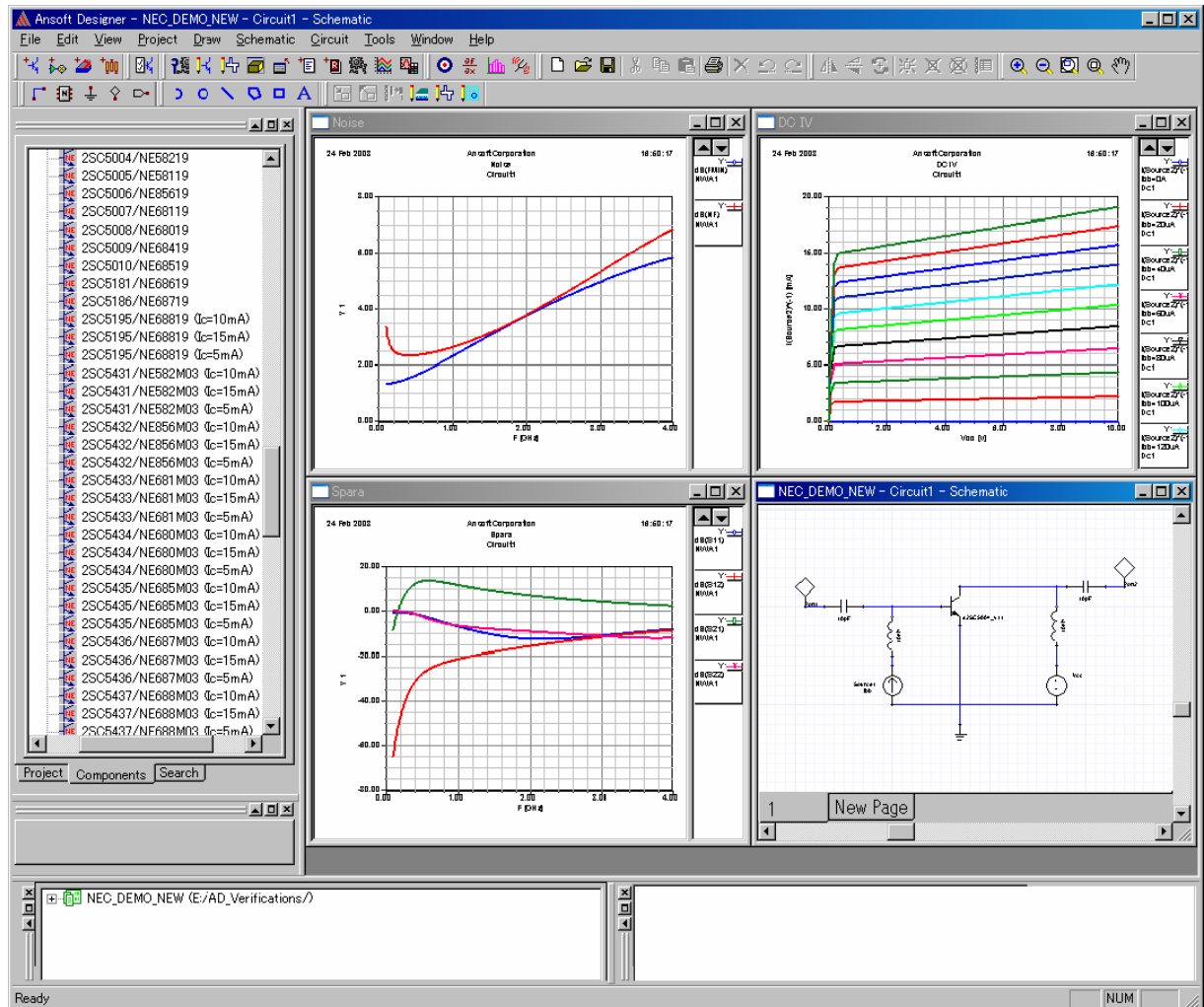
Footprint information of devices has been added to both the S-parameter and SPICE-parameter libraries, so use the information during board designing.

For devices that do not include footprint information, "Non Footprint" is displayed in the Property window.



## 5. DEMONSTRATION

How to use library components



The handling of basic parts is the same as the handling of standard Designer components.

---

► For further information, please contact

**NEC Compound Semiconductor Devices, Ltd.** <http://www.ncsd.necel.com/>

E-mail: [salesinfo@ml.ncsd.necel.com](mailto:salesinfo@ml.ncsd.necel.com) (sales and general)

[techinfo@ml.ncsd.necel.com](mailto:techinfo@ml.ncsd.necel.com) (technical)

Sales Division TEL: +81-44-435-1573 FAX: +81-44-435-1579

**NEC Compound Semiconductor Devices Hong Kong Limited**

E-mail: [ncsd-hk@elhk.nec.com.hk](mailto:ncsd-hk@elhk.nec.com.hk) (sales, technical and general)

Hong Kong Head Office TEL: +852-3107-7303 FAX: +852-3107-7309

Taipei Branch Office TEL: +886-2-8712-0478 FAX: +886-2-2545-3859

Korea Branch Office TEL: +82-2-558-2120 FAX: +82-2-558-5209

**NEC Electronics (Europe) GmbH** <http://www.ee.nec.de/>

TEL: +49-211-6503-0 FAX: +49-211-6503-1327

**California Eastern Laboratories, Inc.** <http://www.cel.com/>

TEL: +1-408-988-3500 FAX: +1-408-988-0279