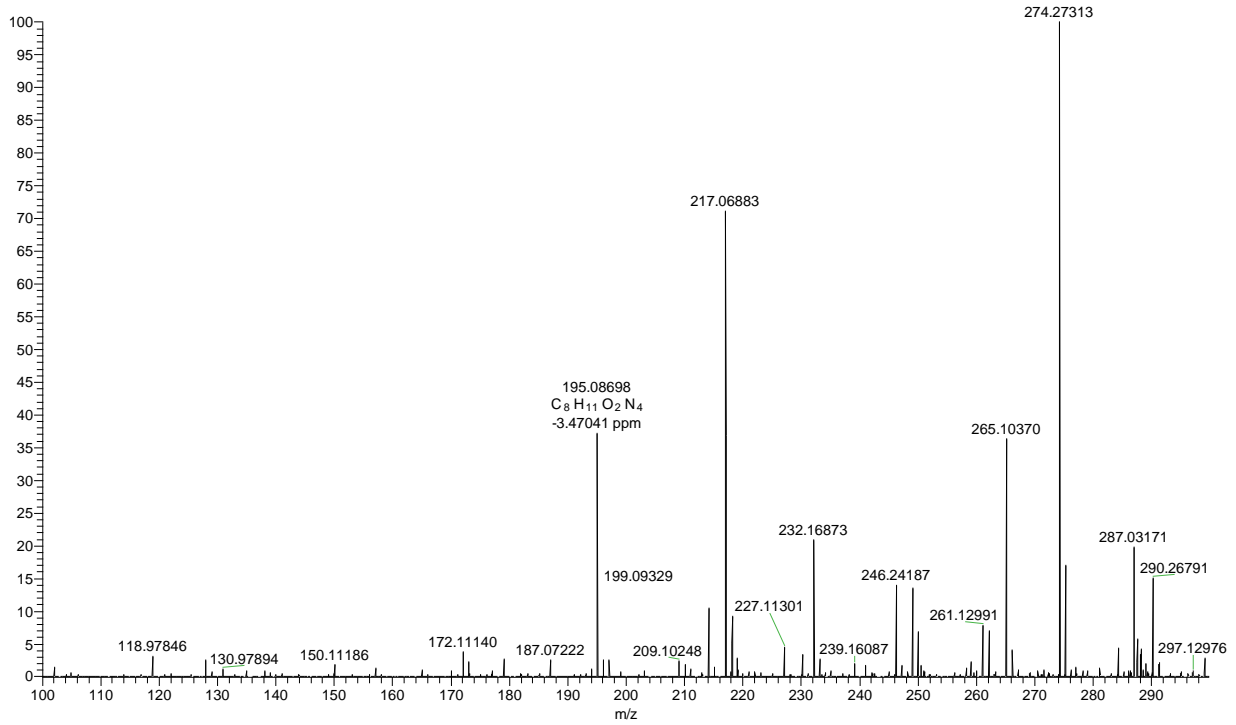


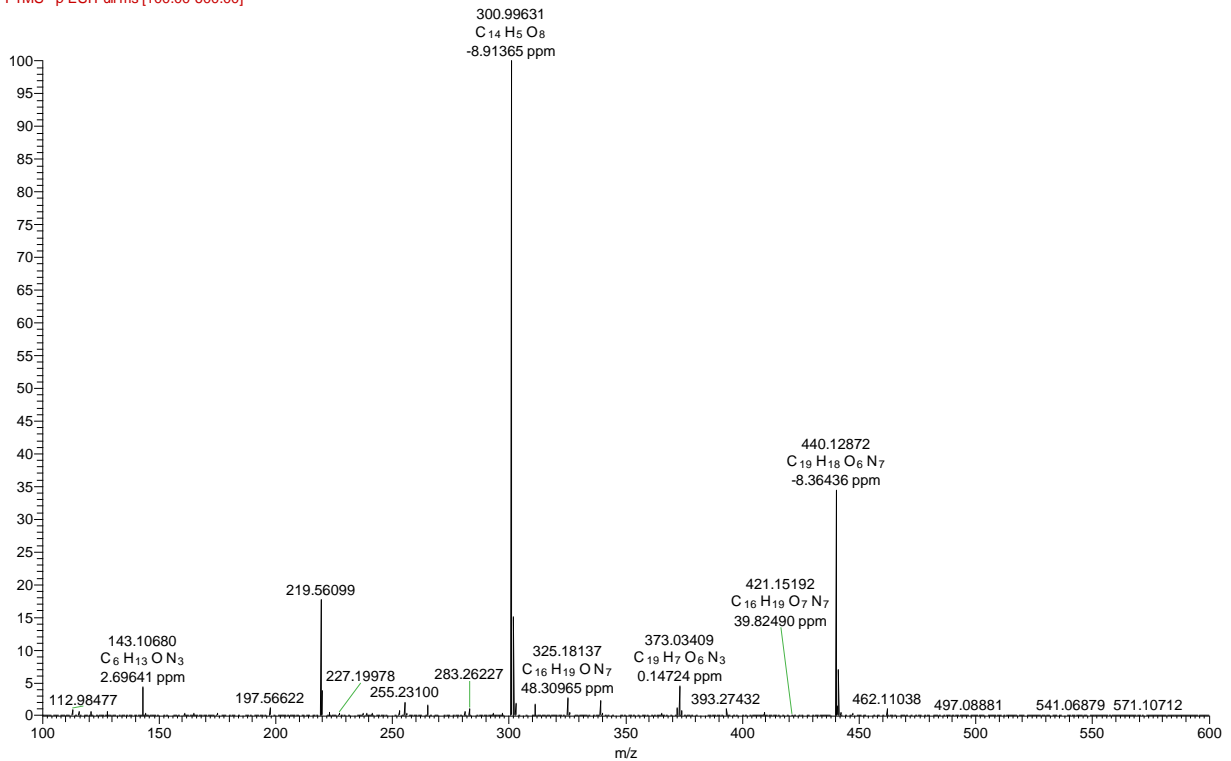
## Positivo

positivo #5 RT: 0.18 AV: 1 NL: 5.37E7  
T: FTMS + p ESI Full ms [100.00-600.00]



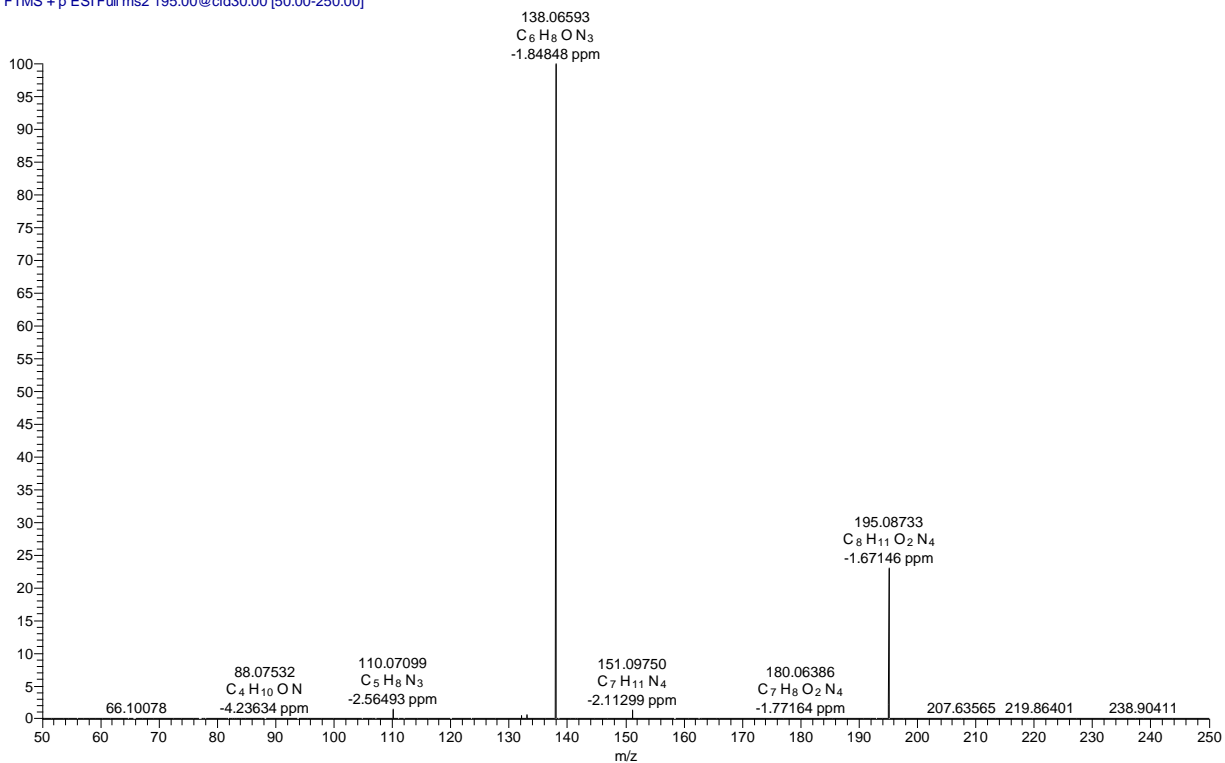
## Negativo

negativo\_130814160030 #3 RT: 0.09 AV: 1 NL: 1.46E8  
F: FTMS - p ESI Full ms [100.00-600.00]



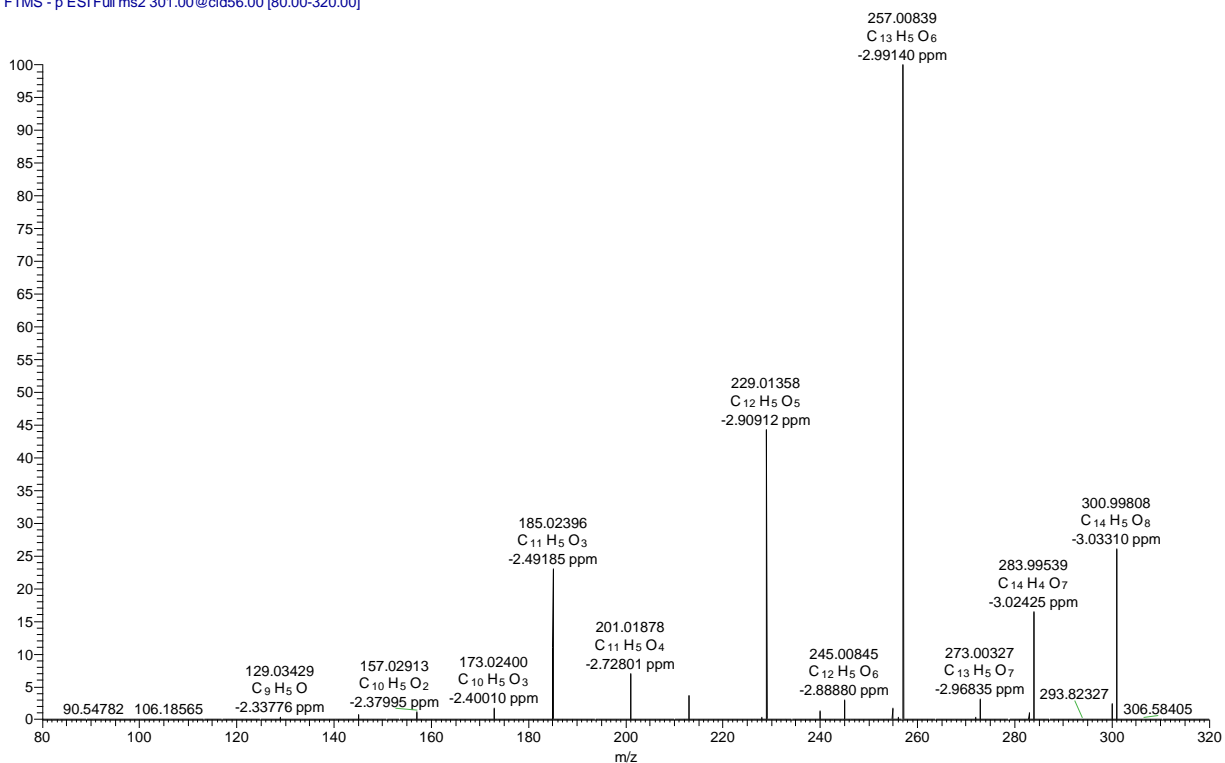
## MS2 Cafeina

MS2cafeina #14 RT: 0.20 AV: 1 NL: 1.05E7  
T: FTMS + p ESI Full ms2 195.00@cid30.00 [50.00-250.00]



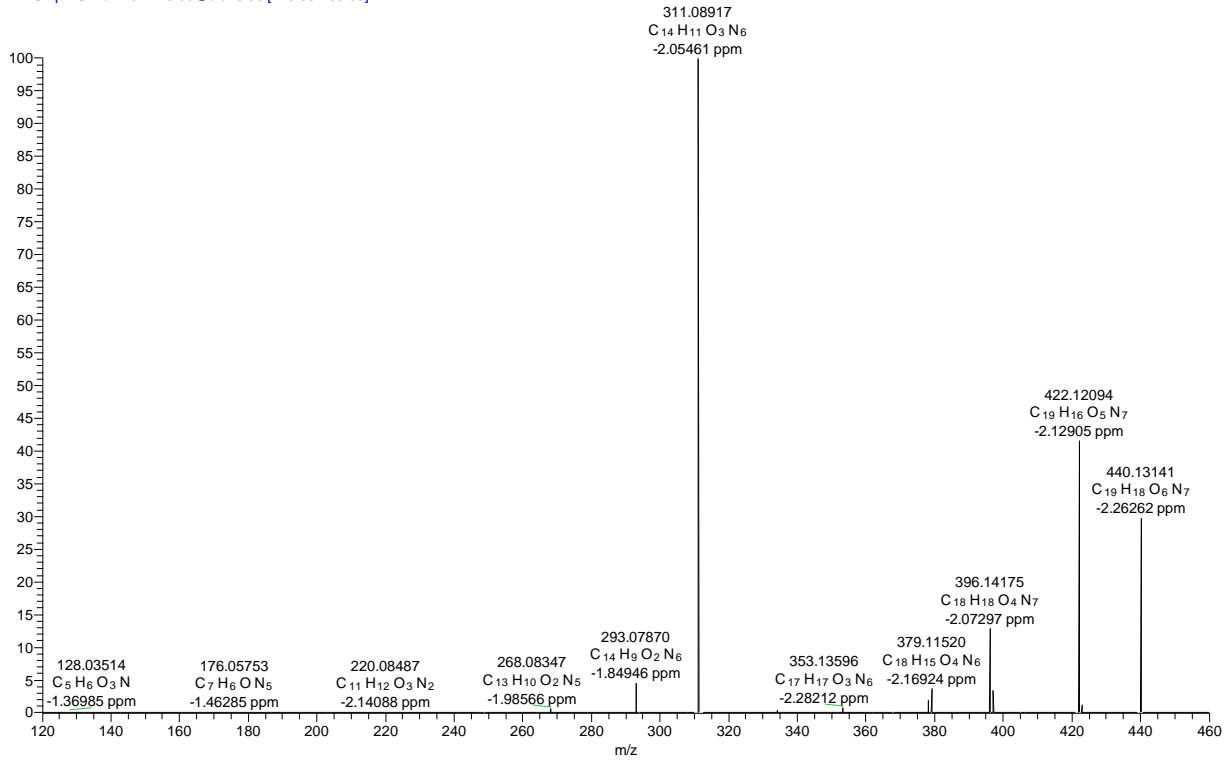
## MS2 Acido Elagico

MS2elagico #14 RT: 0.20 AV: 1 NL: 4.03E7  
T: FTMS - p ESI Full ms2 301.00@cid56.00 [80.00-320.00]



# MS2 Acido Folico

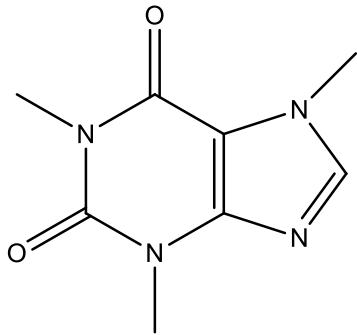
MS2AF #14 RT: 0.20 AV: 1 NL: 9.21E7  
T: FTMS - p ESI Full ms2 440.00@cid26.00 [120.00-460.00]



## Cafeína

Fórmula química:  $C_8H_{10}N_4O_2$

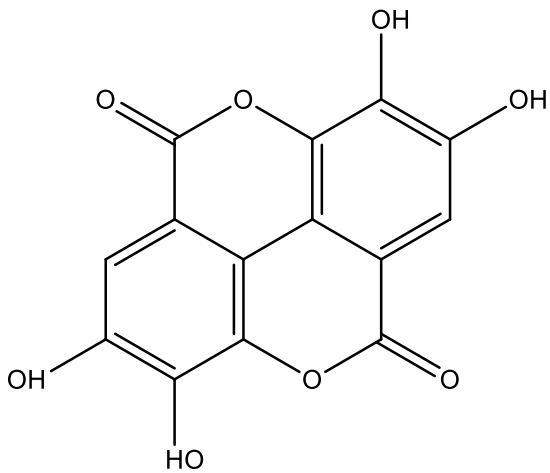
Massa em alta resolução: 194,07983



## Ácido Elágico

Fórmula química:  $C_{14}H_6O_8$

Massa em alta resolução: 302,00572



## Ácido Fólico – Vitamina B9

Fórmula química:  $C_{19}H_{19}N_7O_6$

Massa em alta resolução: 441,13913

