

# FLG243 – Cartografia Temática

**ArcGis**  
**Método Isarítmico**

**Professores**

Ligia Vizeu Barrozo

Reinaldo Paul Pérez Machado

**Elaboração**

William Cabral de Miranda

Topology: [dropdown] [icons] [Editor] [Task: Create New Feature] [Target: [dropdown]]

Layers [dropdown]

- ArcToolbox
  - 3D Analyst Tools
  - Analysis Tools
  - Cartography Tools
  - Conversion Tools
  - Data Interoperability Tools
  - Data Management Tools
  - Geocoding Tools
  - Geostatistical Analyst Tool
  - Linear Referencing Tools
  - Mobile Tools
  - Multidimension Tools
  - Network Analyst Tools
  - Samples
  - Schematics Tools
  - Server Tools
  - Spatial Analyst Tools
  - Spatial Statistics Tools
  - Tracking Analyst Tools

Add Data

Look in: Método isaritmico

- mun\_RMSP.shp
- munic\_Cetesb\_Dissolve.shp ← Máscara
- PM10.shp ← Estações de monitoramento

Name: [text box] [Add]

Show of type: Datasets and Layers (\*.lyr) [Cancel]

Display Source Selection Favorites Index Search Results [icons]

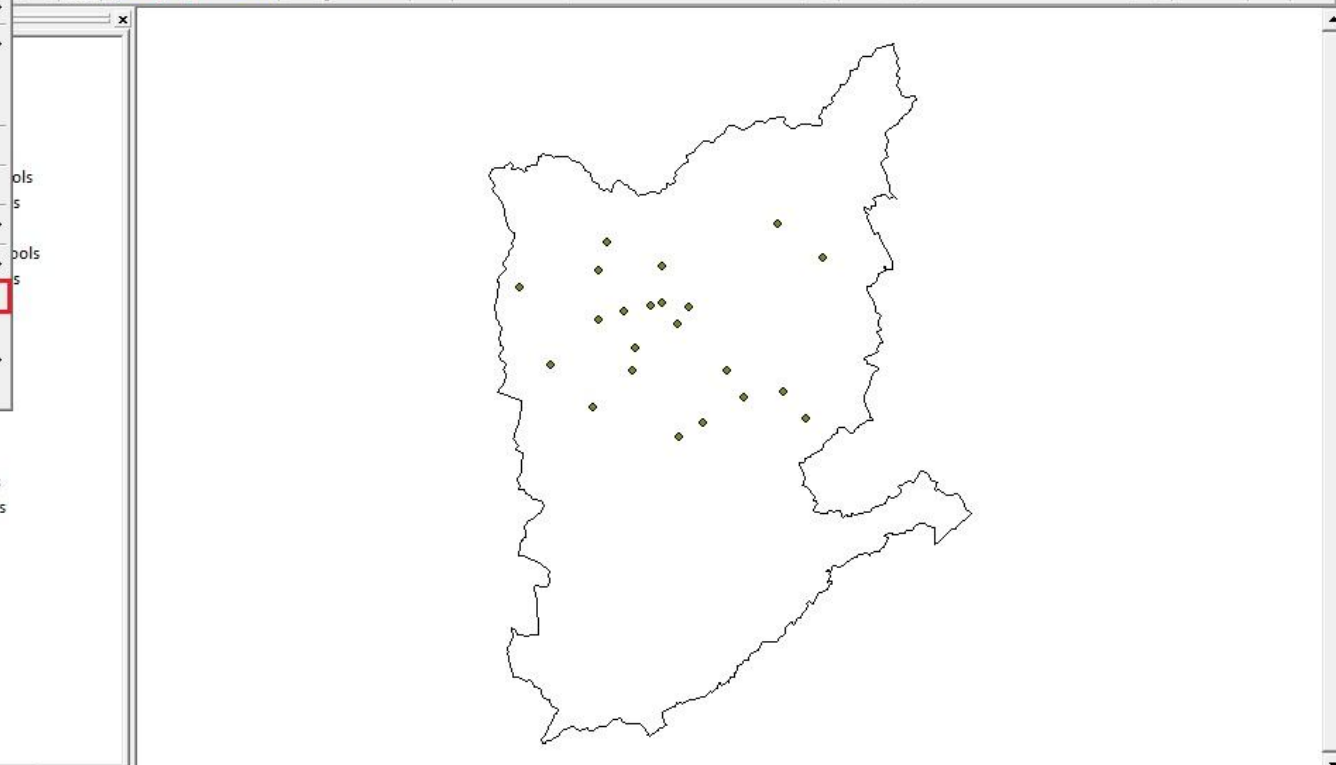
Drawing [icons] [Anal] [10] [B I U A] [43%] [313986.417 7404031.555 Meters]

**Layers**

- PM10
  - ◆
- munic\_Cetesb\_Dissolve
  -

Topology: [Dropdown]

Editor [Dropdown] Task: Create New Feature Target: [Dropdown]



**Layers**

- PM10
- munic\_Cetesb\_Dissolve

**ArcToolbox**

- 3D Analyst Tools
- Analysis Tools
- Cartography Tools
- Conversion Tools
- Data Interoperability Tools
- Data Management Tools
- Geocoding Tools
- Geostatistical Analyst Tools
- Linear Referencing Tools
- Mobile Tools
- Multidimension Tools
- Network Analyst Tools
- Samples
- Schematics Tools
- Server Tools
- Spatial Analyst Tools
- Spatial Statistics Tools
- Tracking Analyst Tools

**Customize**

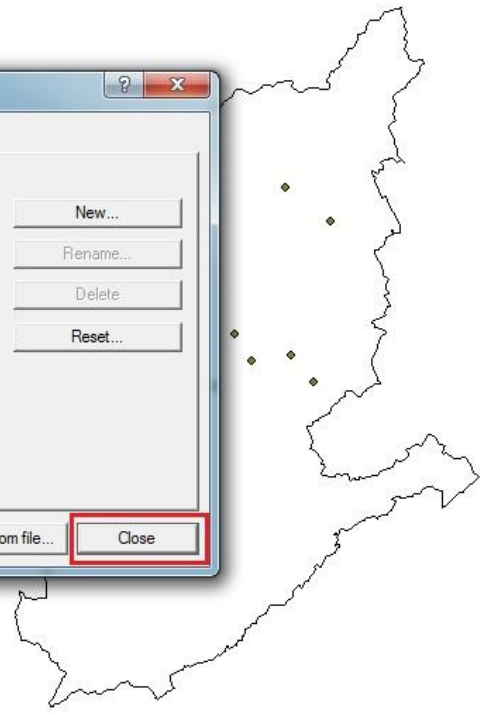
Toolbars | Commands | Options

Toolbars:

- Publisher
- Raster Painting
- Representation
- Route Editing
- Schematic
- Schematic Editor
- Schematic Network Analyst
- Spatial Adjustment
- Spatial Analyst** *Habitar Spatial Analyst*
- Standard
- Street Map
- Survey Analyst
- Survey Editor

Buttons: New..., Rename..., Delete, Reset...

Buttons: Keyboard..., Add from file..., **Close**



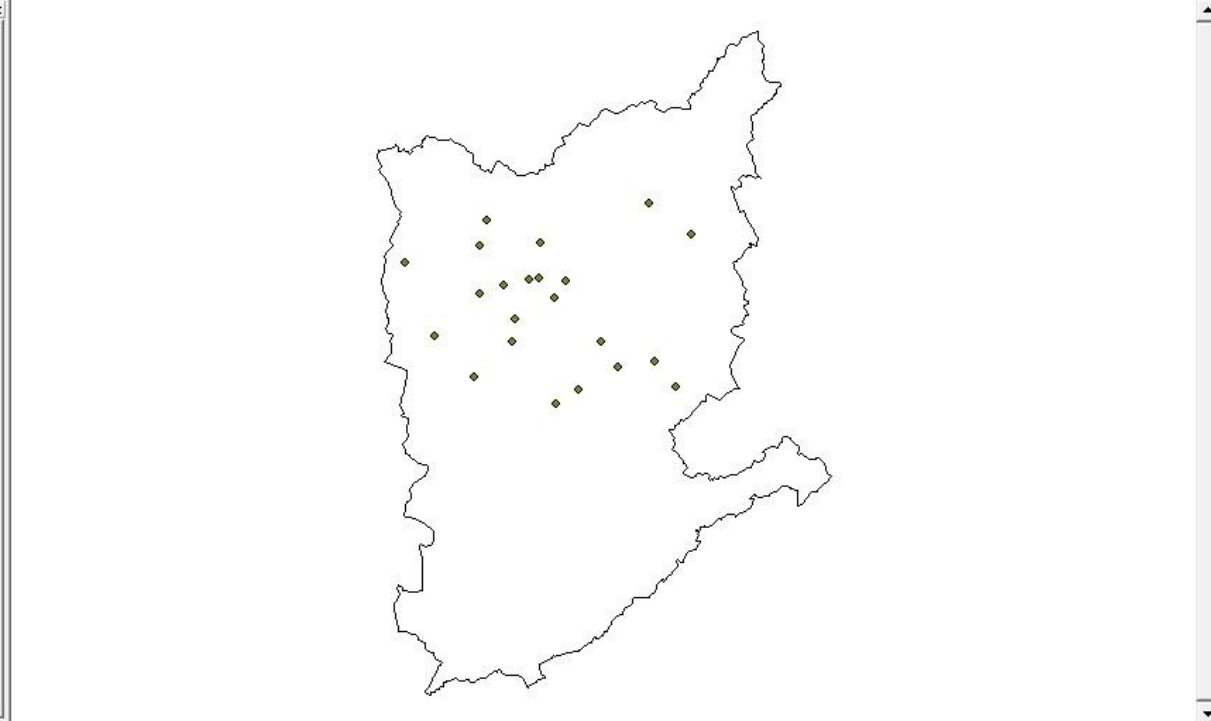


**Layers**

- PM10
  -
- munic\_Cetesb\_Dissolve
  -

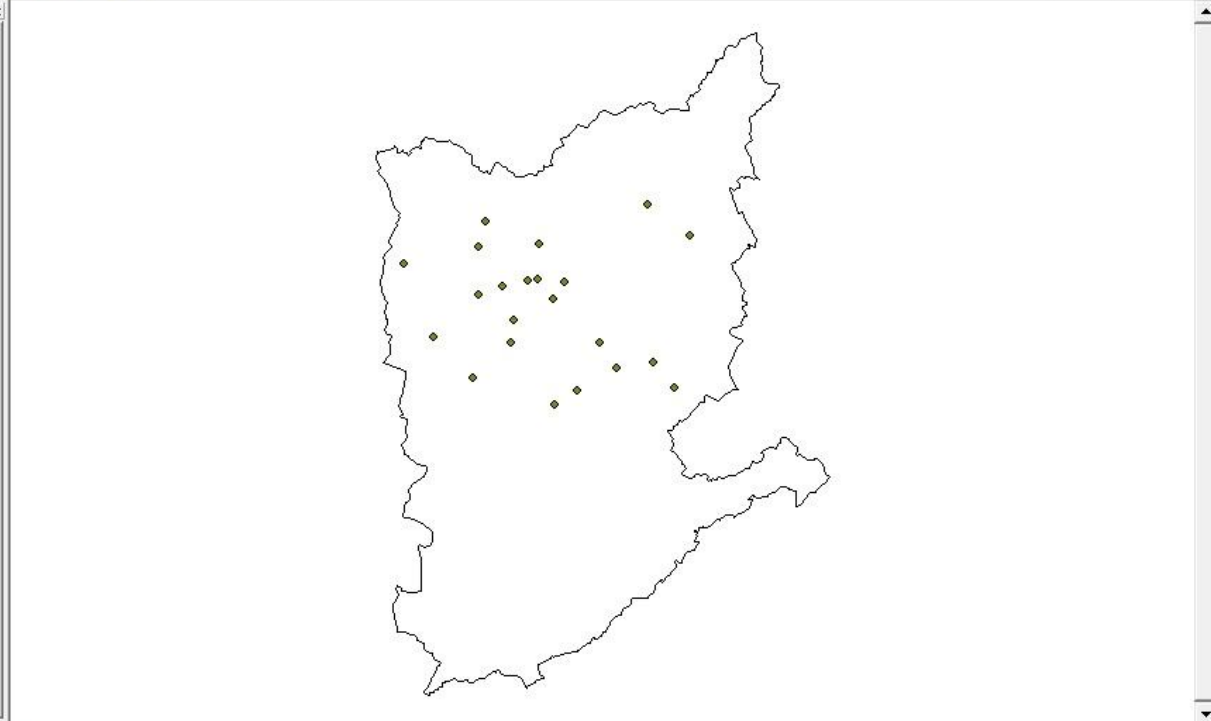
**ArcToolbox**

- 3D Analyst Tools
- Analysis Tools
- Cartography Tools
- Conversion Tools
- Data Interoperability Tools
- Data Management Tools
- Geocoding Tools
- Geostatistical Analyst Tools
- Linear Referencing Tools
- Mobile Tools
- Multidimension Tools
- Network Analyst Tools
- Samples
- Schematics Tools
- Server Tools
- Spatial Analyst Tools
- Spatial Statistics Tools
- Tracking Analyst Tools



- Distance
- Density...
- Interpolate to Raster
- Surface Analysis
- Cell Statistics...
- Neighborhood Statistics...
- Zonal Statistics...
- Zonal Histogram ...
- Reclassify...
- Raster Calculator...
- Convert
- Options...**

- ArcToolbox
  - 3D Analyst Tools
  - Analysis Tools
  - Cartography Tools
  - Conversion Tools
  - Data Interoperability Tools
  - Data Management Tools
  - Geocoding Tools
  - Geostatistical Analyst Tools
  - Linear Referencing Tools
  - Mobile Tools
  - Multidimension Tools
  - Network Analyst Tools
  - Samples
  - Schematics Tools
  - Server Tools
  - Spatial Analyst Tools
  - Spatial Statistics Tools
  - Tracking Analyst Tools





**Layers**

- PM10
  - munic\_Cetesb\_Dissolve

**ArcToolbox**

- 3D Analyst Tools
- Analysis Tools
- Cartography Tools
- Conversion Tools
- Data Interoperability Tools
- Data Management Tools
- Geocoding Tools
- Geostatistical Analyst Tools
- Linear Referencing Tools
- Mobile Tools
- Multidimension Tools
- Network Analyst Tools
- Samples
- Schematics Tools
- Server Tools
- Spatial Analyst Tools
- Spatial Statistics Tools
- Tracking Analyst Tools

**Options**

General | Extent | Cell Size

Working directory: C:\Users\Ligia\Desktop\Tuto

Analysis mask: <None>

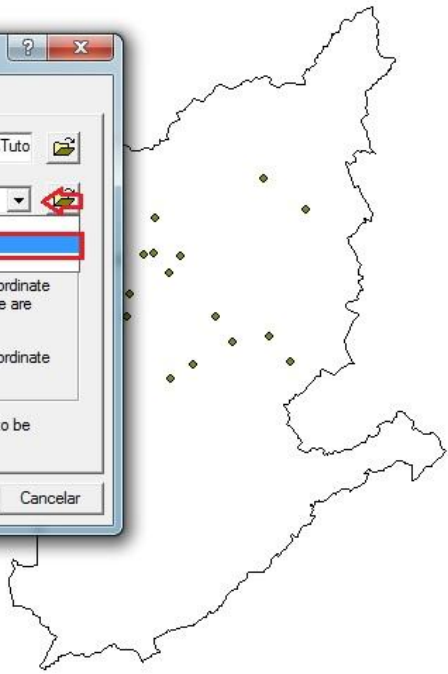
Analysis Coordinate System: munic\_Cetesb\_Dissolve (PM10)

Analysis output will be saved in the same coordinate system as the input (or first raster input if there are multiple inputs).

Analysis output will be saved in the same coordinate system as the active data frame.

Display warning message if raster inputs have to be projected during analysis operation.

OK Cancel





**Layers**

- PM10
  - munic\_Cetesb\_Dissolve

**ArcToolbox**

- 3D Analyst Tools
- Analysis Tools
- Cartography Tools
- Conversion Tools
- Data Interoperability Tools
- Data Management Tools
- Geocoding Tools
- Geostatistical Analyst Tools
- Linear Referencing Tools
- Mobile Tools
- Multidimension Tools
- Network Analyst Tools
- Samples
- Schematics Tools
- Server Tools
- Spatial Analyst Tools
- Spatial Statistics Tools
- Tracking Analyst Tools

**Options**

General **Extent** Cell Size

Analysis extent: Intersection of Inputs [dropdown] [icon]

Top: [input]

Left: [input] Right: [input]

Bottom: [input]

Snap extent to: <None> [dropdown] [icon]

OK Cancel

**Choose a dataset to use as analysis extent**

Look in: Método isaritmico

- mun\_RMSP.shp
- munic\_Cetesb\_Dissolve.shp**
- PM10.shp

Name: [input] **Add**

Show of type: Geodatasets [dropdown] Cancel

**Layers**

- PM10
  - munic\_Cetesb\_Dissolve

**ArcToolbox**

- 3D Analyst Tools
- Analysis Tools
- Cartography Tools
- Conversion Tools
- Data Interoperability Tools
- Data Management Tools
- Geocoding Tools
- Geostatistical Analyst Tools
- Linear Referencing Tools
- Mobile Tools
- Multidimension Tools
- Network Analyst Tools
- Samples
- Schematics Tools
- Server Tools
- Spatial Analyst Tools
- Spatial Statistics Tools
- Tracking Analyst Tools

**Options**

General Extent Cell Size

Analysis extent: Same as Dataset 'munic' [dropdown]

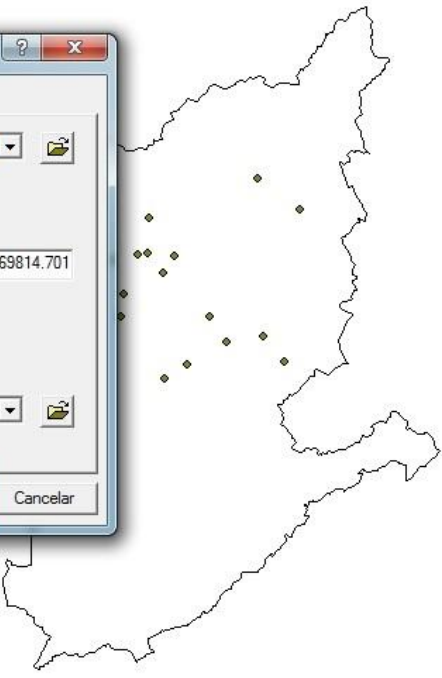
Top: -2574351.86

Left: 313483.83 Right: 369814.701

Bottom: -2656257.97

Snap extent to: <None> [dropdown]

OK Cancel



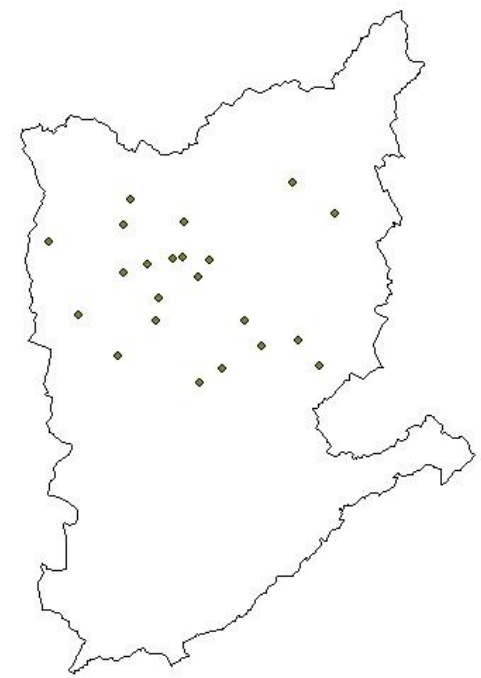
- Spatial Analyst ▾
  - Distance
  - Density...
  - Interpolate to Raster
  - Surface Analysis
  - Cell Statistics...
  - Neighborhood Statistics...
  - Zonal Statistics...
  - Zonal Histogram ...
  - Reclassify...
  - Raster Calculator...
  - Convert
  - Options...

- Inverse Distance Weighted...
- Spline...
- Kriging...
- Analysis Tools
- Cartography Tools
- Conversion Tools
- Data Interoperability Tools
- Data Management Tools
- Geocoding Tools
- Geostatistical Analyst Tools
- Linear Referencing Tools
- Mobile Tools
- Multidimension Tools
- Network Analyst Tools
- Samples
- Schematics Tools
- Server Tools
- Spatial Analyst Tools
- Spatial Statistics Tools
- Tracking Analyst Tools

Topology: [Dropdown]

Editor [Dropdown]

Task: Create New Feature Target: [Dropdown]



Display Source Selection

Favorites Index Search Results

Drawing [Icons] Arial 10 B I U [Icons] 43%

Interpolate a surface from points using an inverse distance weighted technique

271108.426 7428695.808 Meters

**Layers**

- PM10
- ◆
- unic\_Cetesb\_Dissolve
- [ ]

**ArcToolbox**

- 3D Analyst Tools
- Analysis Tools
- Cartography Tools
- Conversion Tools
- Data Interoperability Tools
- Data Management Tools
- Geocoding Tools
- Geostatistical Analyst Tools
- Linear Referencing Tools
- Mobile Tools
- Multidimension Tools
- Network Analyst Tools
- Samples
- Schematics Tools
- Server Tools
- Spatial Analyst Tools
- Spatial Statistics Tools
- Tracking Analyst Tools

**Inverse Distance Weighted**

Input points: PM10

Z value field: Shape

Power: Escolher variável Média

Search radius type: [ ]

Search Radius Settings

Number of points: 12

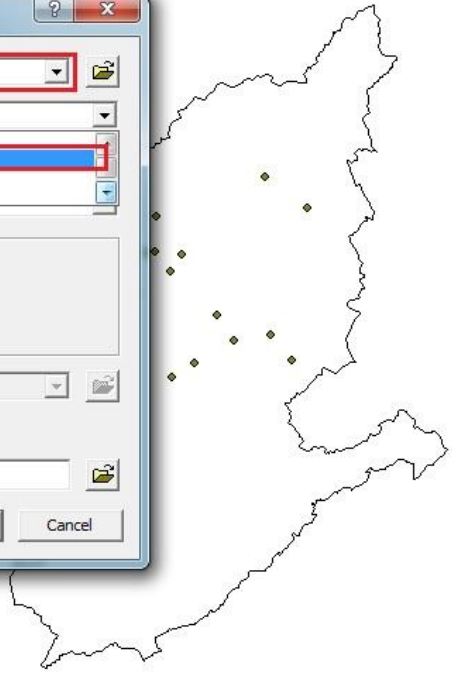
Maximum distance: [ ]

Use barrier polylines: [ ]

Output cell size: 225.323483

Output raster: <Temporary>

OK Cancel



**Layers**

- PM10
  - munic\_Cetesb\_Dissolve

**ArcToolbox**

- 3D Analyst Tools
- Analysis Tools
- Cartography Tools
- Conversion Tools
- Data Interoperability Tools
- Data Management Tools
- Geocoding Tools
- Geostatistical Analyst Tools
- Linear Referencing Tools
- Mobile Tools
- Multidimension Tools
- Network Analyst Tools
- Samples
- Schematics Tools
- Server Tools
- Spatial Analyst Tools
- Spatial Statistics Tools
- Tracking Analyst Tools

**Inverse Distance Weighted**

Input points: PM10

Z value field: Média

Power: 2

Search radius type: Variable

Search Radius Settings

Number of points: 12

Maximum distance: [Empty]

Use barrier polylines: [Empty]

Output cell size: 225.323483

Output raster: <Temporary>

OK Cancel

**Save As**

Look in: Tutorial\_Mapa

Name: PM10\_medial

Save as type: ESRI GRID

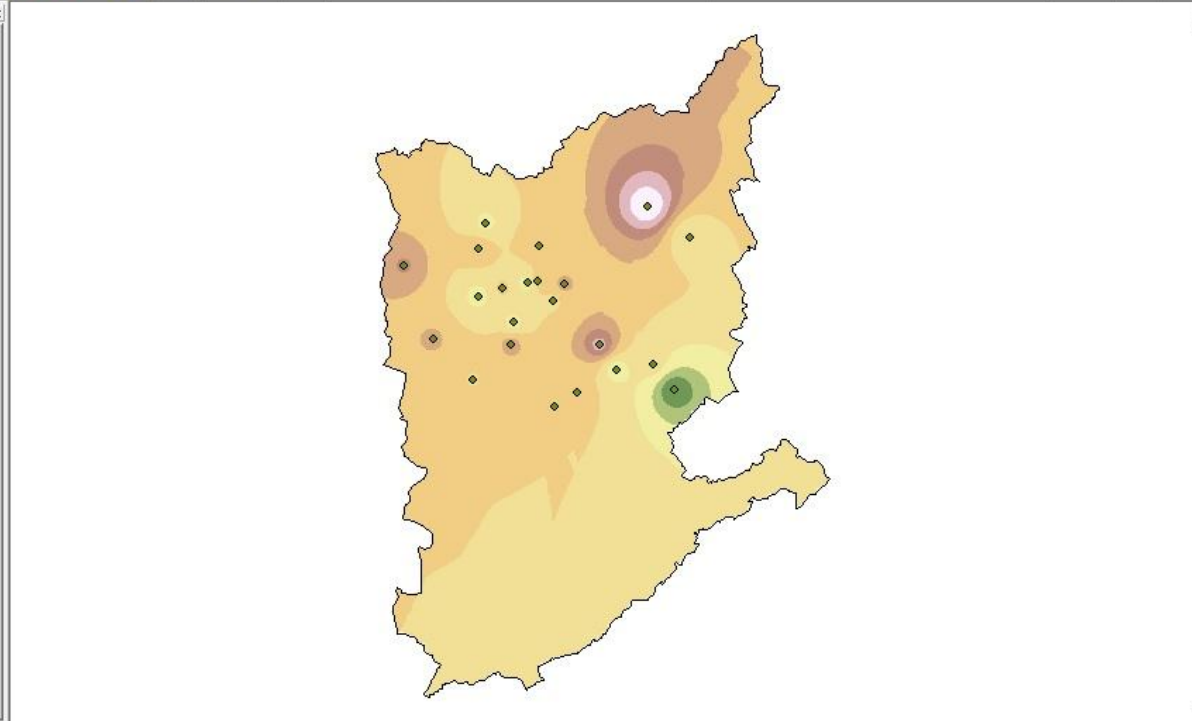
Save Cancel

**Layers**

- PM10
  - munic\_Cetesb\_Dissolve
- PM10\_media
  - 36.4221077 - 41.918357
  - 41.91835701 - 47.41460631
  - 47.41460632 - 52.91085561
  - 52.91085562 - 58.40710492
  - 58.40710493 - 63.90335422
  - 63.90335423 - 69.39960353
  - 69.39960354 - 74.89585283
  - 74.89585284 - 80.39210214
  - 80.39210215 - 85.88835144

**ArcToolbox**

- 3D Analyst Tools
- Analysis Tools
- Cartography Tools
- Conversion Tools
- Data Interoperability Tools
- Data Management Tools
- Geocoding Tools
- Geostatistical Analyst Tools
- Linear Referencing Tools
- Mobile Tools
- Multidimension Tools
- Network Analyst Tools
- Samples
- Schematics Tools
- Server Tools
- Spatial Analyst Tools
- Spatial Statistics Tools
- Tracking Analyst Tools









**Layers**

- PM10
  - PM10\_media
- munic\_Cetesb\_Dissolve
- PM10\_media

Legend for PM10\_media:

- 36.4221077 - 41.918357
- 41.91835701 - 47.41460631
- 47.41460632 - 52.91085561
- 52.91085562 - 58.40710492
- 58.40710493 - 63.90335422
- 63.90335423 - 69.39960353
- 69.39960354 - 74.89585283
- 74.89585284 - 80.39210214
- 80.39210215 - 85.88835144

**Reclassify**

Input raster: PM10\_media  
 Reclass field:

Set values to reclassify:

Old values	New values
36.422108 - 40	1
40 - 50	2
50 - 60	3
60 - 70	4
70 - 80	5

Buttons: Classify... Unique Add Entry Delete Entries Precision... Load... Save...

Change missing values to NoData

Output raster: <Temporary>

**OK** Cancel

**Save As**

Look in: Tutorial\_Mapas

pm10\_media

Name: pm10mediaRec

Save as type: ESRI GRID

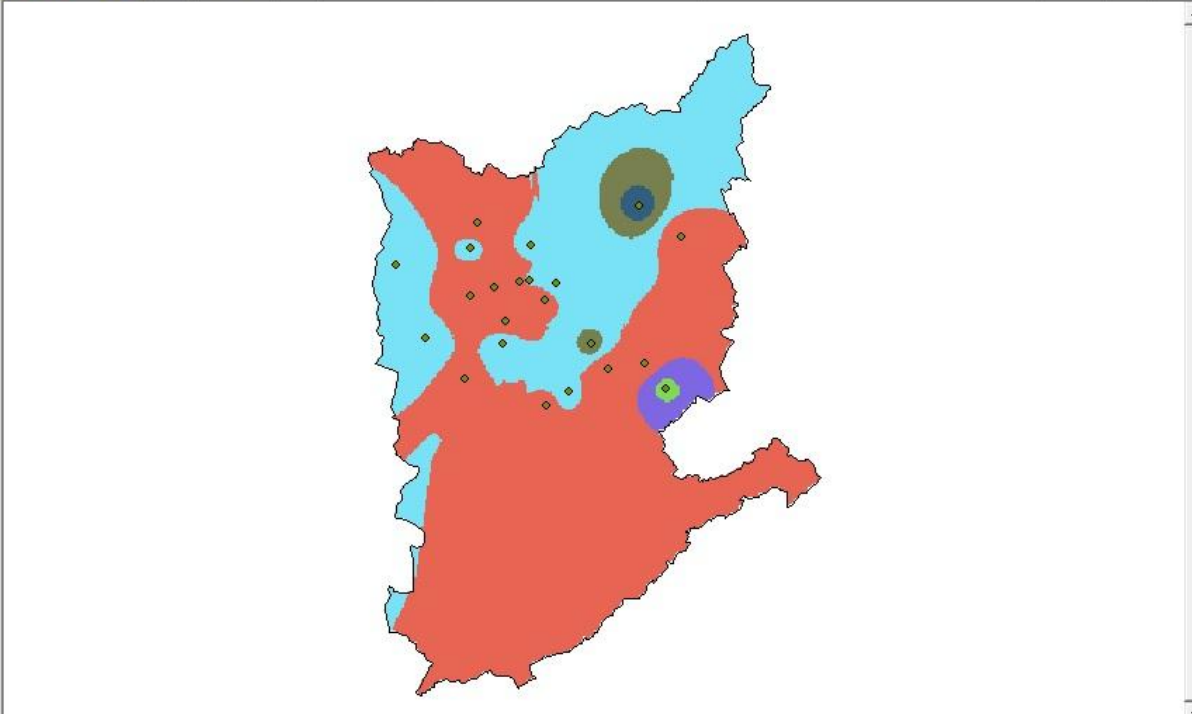
**Save** Cancel

**Layers**

- PM10
  - munic\_Cetesb\_Dissolve
  - pm10mediaRec
    - 1
    - 2
    - 3
    - 4
    - 5
    - 6
  - PM10\_media
    - 36.4221077 - 41.918357
    - 41.91835701 - 47.41460631
    - 47.41460632 - 52.91085561
    - 52.91085562 - 58.40710492
    - 58.40710493 - 63.90335422
    - 63.90335423 - 69.39960353
    - 69.39960354 - 74.89585283
    - 74.89585284 - 80.39210214
    - 80.39210215 - 85.88835144

**ArcToolbox**

- 3D Analyst Tools
- Analysis Tools
- Cartography Tools
- Conversion Tools
- Data Interoperability Tools
- Data Management Tools
- Geocoding Tools
- Geostatistical Analyst Tools
- Linear Referencing Tools
- Mobile Tools
- Multidimension Tools
- Network Analyst Tools
- Samples
- Schematics Tools
- Server Tools
- Spatial Analyst Tools
- Spatial Statistics Tools
- Tracking Analyst Tools



**Layers**

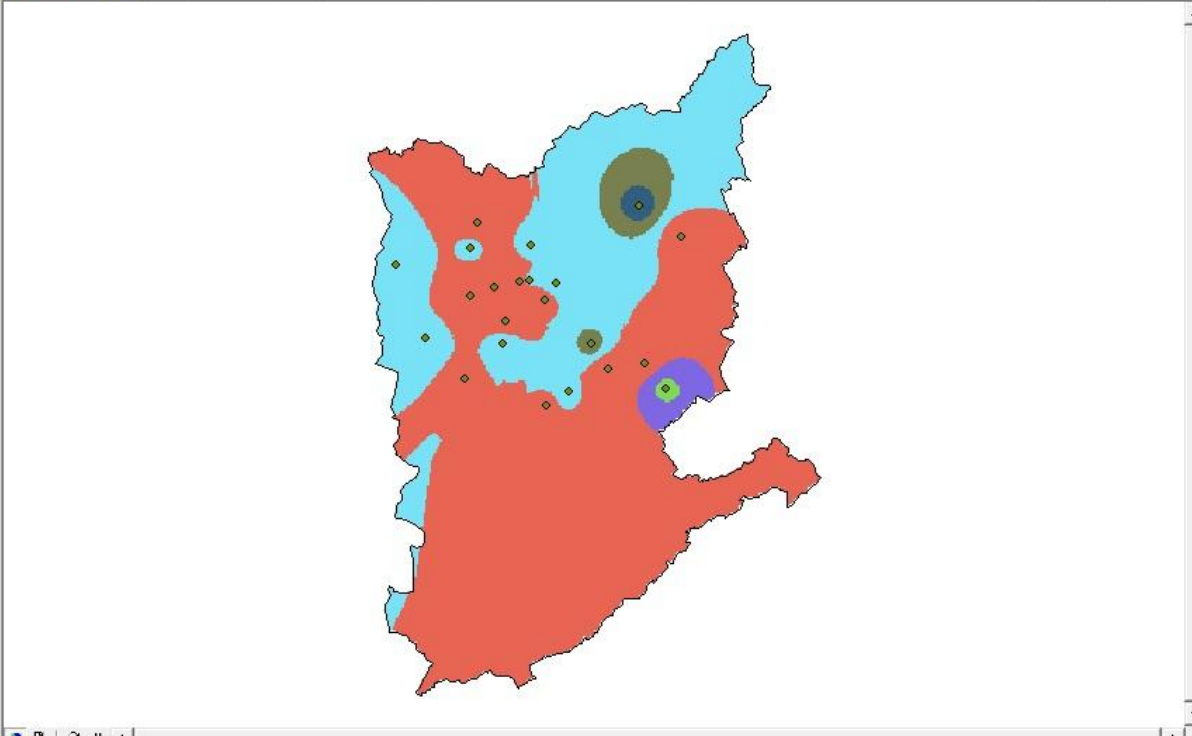
- PM10
  - munic\_Cetesb\_Dissolve
  - pm10mediaRes
    - 1
    - 2
    - 3
    - 4
    - 5
    - 6
  - PM10\_medi
    - 36.42210
    - 41.91835
    - 47.41460
    - 52.91085
    - 58.40710
    - 63.90335
    - 69.39960
    - 74.89580
    - 80.39210215 - 85.88835144

**ArcToolbox**

- 3D Analyst Tools
- Analysis Tools
- Cartography Tools
- Conversion Tools
- Data Interoperability Tools
- Management Tools
- Modeling Tools
- Statistical Analyst Tools
- Referencing Tools
- Geoprocessing Tools
- Dimension Tools
- Network Analyst Tools
- Network Analyst Tools
- Statistics Tools
- Geoprocessing Tools

**Context Menu (over pm10mediaRes):**

- Copy
- Remove
- Open Attribute Table
- Joins and Relates
- Zoom To Layer
- Zoom To Make Visible
- Zoom To Raster Resolution
- Visible Scale Range
- Data
- Save As Layer File...
- Properties...**



**Layers**

- PM10
  - munic\_Cetesb\_Dissolve
  - pm10mediaRec
    - 1
    - 2
    - 3
    - 4
    - 5
    - 6
- PM10\_media
  - 36.4221077 - 41.918357
  - 41.91835701 - 47.41460631
  - 47.41460632 - 52.91085561
  - 52.91085562 - 58.40710492
  - 58.40710493 - 63.90335422
  - 63.90335423 - 69.39960353
  - 69.39960354 - 74.89585283
  - 74.89585284 - 80.39210214
  - 80.39210215 - 85.88835144

**ArcToolbox**

- 3D Analysis
- Analysis Tools
- Cartography
- Conversion
- Data Interoperability
- Data Management
- Geocoding
- Geostatistical Analysis
- Linear Referencing
- Mobile Data Collection
- Multidimensional Data
- Network Analyst
- Samples
- Schematic Diagramming
- Server Tools
- Spatial Analyst
- Spatial Statistics
- Tracking Analyst

**Layer Properties**

General | Source | Extent | Display | **Symbology** | Fields | Joins & Relates

Show: **Unique Values** | Draw raster assigning a color to each value | Import...

Value Field: VALUE | Color Scheme: [Dropdown]

Symbol	<VALUE>	Label	Count
[Blue Box]	<all other values>	<all other values>	
<b>&lt;Heading&gt;</b>			
[Light Red Box]	1	1	127
[Light Orange Box]	2	2	968
[Orange Box]	3	3	32895
[Dark Orange Box]	4	4	15831
[Red-Orange Box]	5	5	1434
[Dark Red Box]	6	6	281

Add All Values | Add Values... | Remove | Default Colors

Display NoData as [Dropdown]

OK | Cancel | Aplicar

**Layers**

- PM10
  - pm10mediaRec
    - 1
    - 2
    - 3
    - 4
    - 5
    - 6
- PM10\_media
  - 36.4221077 - 41.918357
  - 41.91835701 - 47.41460631
  - 47.41460632 - 52.91085561
  - 52.91085562 - 58.40710492
  - 58.40710493 - 63.90335422
  - 63.90335423 - 69.39960353
  - 69.39960354 - 74.89585283
  - 74.89585284 - 80.39210214
  - 80.39210215 - 85.88835144

**ArcToolbox**

- 3D Analysis Tools
- Analysis Tools
- Cartography Tools
- Conversion Tools
- Data Interoperability Tools
- Data Management Tools
- Geocoding Tools
- Geostatistical Tools
- Linear Referencing Tools
- Mobile Tools
- Multidimensional Tools
- Network Analysis Tools
- Samples Tools
- Schematic Tools
- Server Tools
- Spatial Analyst Tools
- Spatial Statistics Tools
- Tracking Tools

**Layer Properties**

General | Source | Extent | Display | Symbology | Fields | Joins & Relates

Show: Unique Values

Draw raster assigning a color to each value

Value Field: VALUE

Color Scheme: [Color Ramp]

Symbol	<VALUE>	Label	Count
[Blue Box]	<all other values>	<all other values>	
<b>&lt;Heading&gt;</b>			
[Red Box]	1	30	127
[Light Red Box]	2	40	968
[Light Red Box]	3	50	32895
[Light Red Box]	4	60	15831
[Light Red Box]	5	70	1434
[Red Box]	6	> 80	281

Buttons: Add All Values, Add Values..., Remove, Default Colors

Display NoData as: [dropdown]

Buttons: OK, Cancel, Aplicar



**Layers**

- PM10
  - pm10mediaRec
    - 1
    - 2
    - 3
    - 4
    - 5
    - 6
- PM10\_media
  - 36.4221077 - 41.918357
  - 41.91835701 - 47.41460631
  - 47.41460632 - 52.91085561
  - 52.91085562 - 58.40710492
  - 58.40710493 - 63.90335422
  - 63.90335423 - 69.39960353
  - 69.39960354 - 74.89585283
  - 74.89585284 - 80.39210214
  - 80.39210215 - 85.88835144

**ArcToolbox**

- 3D Analysis Tools
- Analysis Tools
- Cartography Tools
- Conversion Tools
- Data Interoperability Tools
- Data Management Tools
- Geocoding Tools
- Geostatistical Analysis Tools
- Linear Referencing Tools
- Mobile Data Collection Tools
- Multidimensional Data Tools
- Network Analysis Tools
- Samples Tools
- Schematic Diagramming Tools
- Server Tools
- Spatial Analyst Tools
- Spatial Statistics Tools
- Tracking Tools

**Layer Properties**

General | Source | Extent | Display | Symbology | Fields | Joins & Relates

Show: Unique Values

Draw raster assigning a color to each value

Value Field: VALUE

Color Scheme: [Red gradient]

Symbol	<VALUE>	Label	Count
[Blue square]	<all other values>	<all other values>	
<Heading>			
[Light red square]	1	30	127
[Light red square]	2	40	968
[Light red square]	3	50	32895
[Light red square]	4	60	15831
[Light red square]	5	70	1434
[Dark red square]	6	>80	281

Buttons: Add All Values, Add Values..., Remove, Default Colors

Display NoData as: [Dropdown]

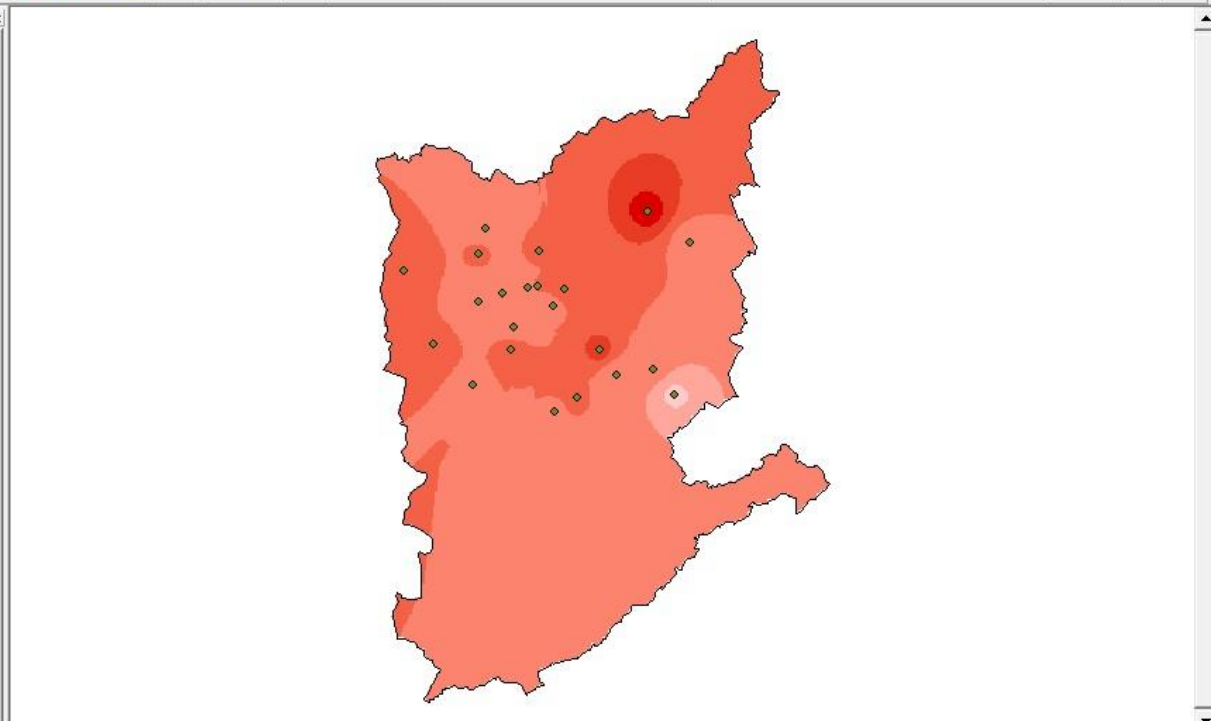
Buttons: OK, Cancel, Aplicar

**Layers**

- PM10
  - munic\_Cetesb\_Dissolve
  - pm10mediaRec
    - 30
    - 40
    - 50
    - 60
    - 70
    - >80
- PM10\_media
  - 36.4221077 - 41.918357
  - 41.91835701 - 47.41460631
  - 47.41460632 - 52.91085561
  - 52.91085562 - 58.40710492
  - 58.40710493 - 63.90335422
  - 63.90335423 - 69.39960353
  - 69.39960354 - 74.89585283
  - 74.89585284 - 80.39210214
  - 80.39210215 - 85.88835144

**ArcToolbox**

- 3D Analyst Tools
- Analysis Tools
- Cartography Tools
- Conversion Tools
- Data Interoperability Tools
- Data Management Tools
- Geocoding Tools
- Geostatistical Analyst Tools
- Linear Referencing Tools
- Mobile Tools
- Multidimension Tools
- Network Analyst Tools
- Samples
- Schematics Tools
- Server Tools
- Spatial Analyst Tools
- Spatial Statistics Tools
- Tracking Analyst Tools

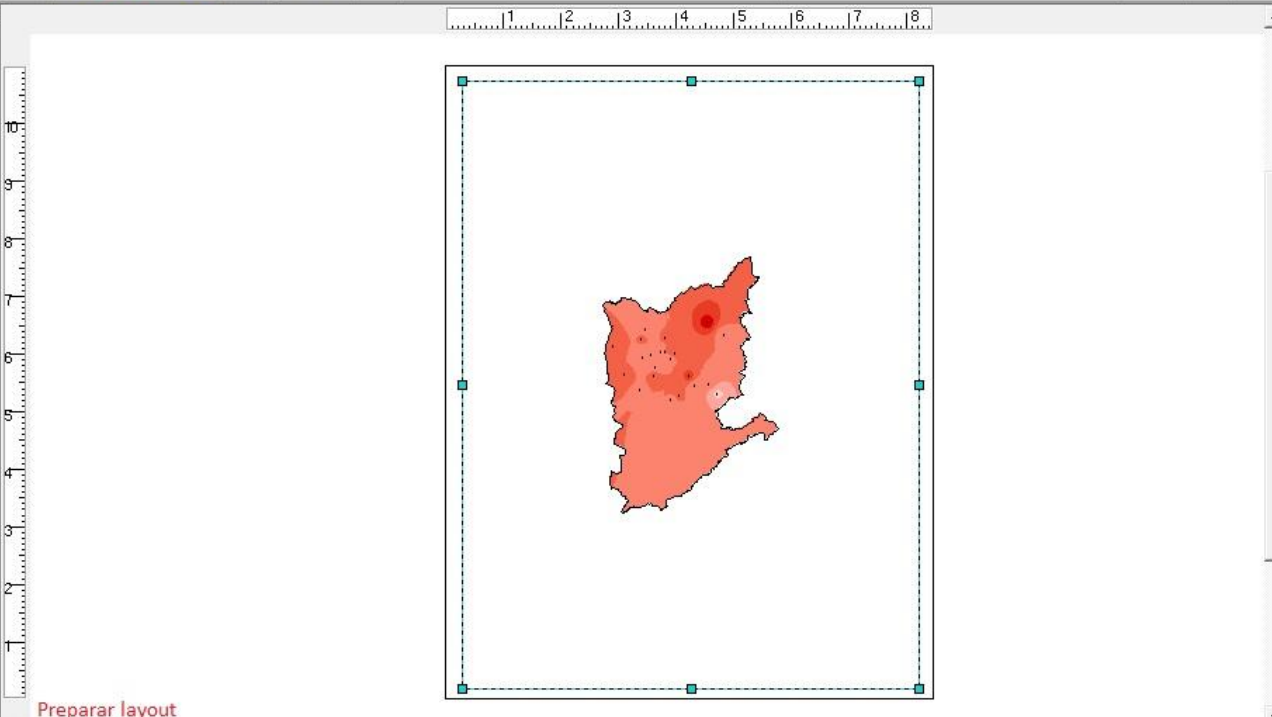


**Layers**

- PM10
  - pm10mediaRec
    - 30
    - 40
    - 50
    - 60
    - 70
    - >80
- PM10\_media
  - 36.4221077 - 41.918357
  - 41.91835701 - 47.41460631
  - 47.41460632 - 52.91085561
  - 52.91085562 - 58.40710492
  - 58.40710493 - 63.90335422
  - 63.90335423 - 69.39960353
  - 69.39960354 - 74.89585283
  - 74.89585284 - 80.39210214
  - 80.39210215 - 85.88835144

**ArcToolbox**

- 3D Analyst Tools
- Analysis Tools
- Cartography Tools
- Conversion Tools
- Data Interoperability Tools
- Data Management Tools
- Geocoding Tools
- Geostatistical Analyst Tools
- Linear Referencing Tools
- Mobile Tools
- Multidimension Tools
- Network Analyst Tools
- Samples
- Schematics Tools
- Server Tools
- Spatial Analyst Tools
- Spatial Statistics Tools
- Tracking Analyst Tools





**Layers**

- PM10
  - pm10mediaRec
    - 30
    - 40
    - 50
    - 60
    - 70
    - >80
  - PM10\_media
    - 36.4221077 - 41.918357
    - 41.91835701 - 47.4146063
    - 47.41460632 - 52.9108556
    - 52.91085562 - 58.4071049
    - 58.40710493 - 63.9033542
    - 63.90335423 - 69.3996035
    - 69.39960354 - 74.8958528
    - 74.89585284 - 80.3921021
    - 80.39210215 - 85.8883514
- New Data Frame
  - PM10

Display Source Selection

**ArcToolbox**

- 3D Analyst Tools
- Analysis Tools
- Cartography Tools
- Conversion Tools
- Data Interoperability Tools
- Data Management Tools
- Geocoding Tools
- Geostatistical Analyst Tools
- Linear Referencing Tools
- Mobile Tools
- Multidimension Tools
- Network Analyst Tools
- Samples
- Schematics Tools
- Server Tools
- Spatial Analyst Tools
- Spatial Statistics Tools
- Tracking Analyst Tools

Favorites Index Search Results

**Add Data**

Look in: Método isaritmico

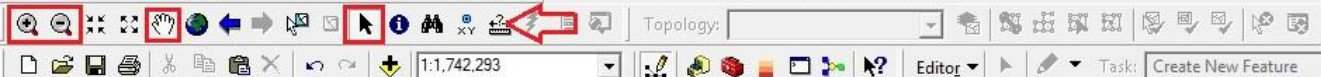
- mun\_RMSP.shp
- munic\_Cetesb\_Dissolve.shp
- PM10.shp

Iserir shape da Região Metropolitana de SP

Name: mun\_RMSP.shp [Add]

Show of type: Datasets and Layers (\*.lyr) [Cancel]

Usar as ferramentas para organizar o layout

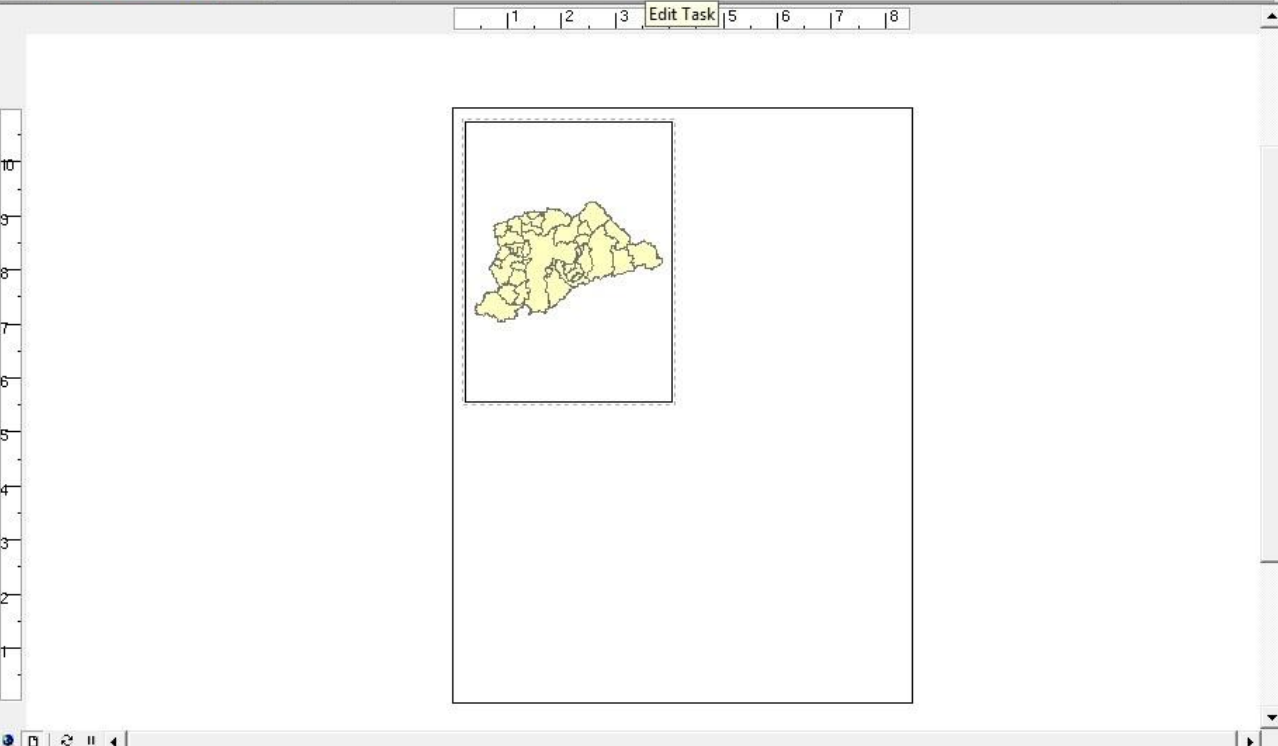


**Layers**

- PM10
  - mun\_RMSP
  - munic\_Cetesb\_Dissolve
  - pm10mediaRec
    - 30
    - 40
    - 50
    - 60
    - 70
    - >80
  - PM10\_media
    - 36.4221077 - 41.918357
    - 41.91835701 - 47.4146063
    - 47.41460632 - 52.9108556
    - 52.91085562 - 58.4071049
    - 58.40710493 - 63.9033542
    - 63.90335423 - 69.3996035
    - 69.39960354 - 74.8958528
    - 74.89585284 - 80.3921021
    - 80.39210215 - 85.8883514
- New Data Frame**

**ArcToolbox**

- 3D Analyst Tools
- Analysis Tools
- Cartography Tools
- Conversion Tools
- Data Interoperability Tools
- Data Management Tools
- Geocoding Tools
- Geostatistical Analyst Tools
- Linear Referencing Tools
- Mobile Tools
- Multidimension Tools
- Network Analyst Tools
- Samples
- Schematics Tools
- Server Tools
- Spatial Analyst Tools
- Spatial Statistics Tools
- Tracking Analyst Tools



**Layers**

- PM10
  - mun\_RMSP
    - Editor**
  - munic\_Cetesb\_Dissolve
- pm10mediaRec
  - 30
  - 40
  - 50
  - 60
  - 70
  - >80
- PM10\_media
  - 36.4221077 - 41.918357
  - 41.91835701 - 47.4146063
  - 47.41460632 - 52.9108556
  - 52.91085562 - 58.4071049
  - 58.40710493 - 63.9033542
  - 63.90335423 - 69.3996035
  - 69.39960354 - 74.8958528
  - 74.89585284 - 80.3921021
  - 80.39210215 - 85.8883514

**ArcToolbox**

- 3D Analyst Tools
- Analysis Tools
- Cartography Tools
- Conversion Tools
- Data Interoperability Tools
- Data Management Tools
- Geocoding Tools
- Geostatistical Analyst Tools
- Linear Referencing Tools
- Mobile Tools
- Multidimension Tools
- Network Analyst Tools
- Samples
- Schematics Tools
- Server Tools
- Spatial Analyst Tools
- Spatial Statistics Tools
- Tracking Analyst Tools

**Symbol Selector**

Category: All

Green	Blue
Sun	Hollow
Lake	Rose
Beige	Yellow

Preview

Options

Fill Color: [Dropdown]

Outline Width: 0.40

Outline Color: [Dropdown]

Properties...

More Symbols [Dropdown]

Save... Reset

**OK** Cancel



**Layers**

- PM10
  - mun\_RMSP
  - munic\_Cetesb\_Dissolve
  - pm10mediaRec
    - 30
    - 40
    - 50
    - 60
    - 70
    - >80
  - PM10\_media
    - 36.4221077 - 41.918357
    - 41.91835701 - 47.4146063
    - 47.41460632 - 52.9108556
    - 52.91085562 - 58.4071049
    - 58.40710493 - 63.9033542
    - 63.90335423 - 69.3996035
    - 69.39960354 - 74.8958528
    - 74.89585284 - 80.3921021
    - 80.39210215 - 85.8883514
- New Data Frame**

Display Source Selection

**ArcToolbox**

- 3D Analyst Tools
- Analysis Tools
- Cartography Tools
- Conversion Tools
- Data Interoperability Tools
- Data Management Tools
- Geocoding Tools
- Geostatistical Analyst Tools
- Linear Referencing Tools
- Mobile Tools
- Multidimension Tools
- Network Analyst Tools
- Samples
- Schematics Tools
- Server Tools
- Spatial Analyst Tools
- Spatial Statistics Tools
- Tracking Analyst Tools

Favorites Index Search Results

**Legend Wizard**

Choose which layers you want to include in your legend

Map Layers:	Legend Items:
PM10	pm10mediaRec
mun_RMSP	
munic_Cetesb_Dissolve	
pm10mediaRec	
PM10_media	

Set the number of columns in your legend: 1

Preview

< Voltar **Avançar >** Cancelar

**Layers**

- PM10
  - pm10mediaRec
    - 30
    - 40
    - 50
    - 60
    - 70
    - >80
- PM10\_media
  - 36.4221077 - 41.918357
  - 41.91835701 - 47.41460631
  - 47.41460632 - 52.91085561
  - 52.91085562 - 58.40710492
  - 58.40710493 - 63.90335422
  - 63.90335423 - 69.39960353
  - 69.39960354 - 74.89585283
  - 74.89585284 - 80.39210214
  - 80.39210215 - 85.88835144

**ArcToolbox**

- 3D Analyst Tools
- Analysis Tools
- Cartography Tools
- Conversion Tools
- Data Interoperability Tools
- Data Management Tools
- Geocoding Tools
- Geostatistical Analyst Tools
- Linear Referencing Tools
- Mobile Tools
- Multidimension Tools
- Network Analyst Tools
- Samples
- Schematics Tools
- Server Tools
- Spatial Analyst Tools
- Spatial Statistics Tools
- Tracking Analyst Tools

**Legend Wizard**

Legend Title

PM10 - Média (1985-2005)

Legend Title font properties

Color: [Black]

Size: 15

Font: Arial

Title Justification

You can use this to control the justification of the title with the rest of the legend.

Preview

< Voltar Avançar > Cancelar

**Layers**

- PM10
  - munic\_Cetesb\_Dissolve
  - pm10mediaRec
    - 30
    - 40
    - 50
    - 60
    - 70
    - >80
- PM10\_media
  - 36.4221077 - 41.918357
  - 41.91835701 - 47.41460631
  - 47.41460632 - 52.91085561
  - 52.91085562 - 58.40710492
  - 58.40710493 - 63.90335422
  - 63.90335423 - 69.39960353
  - 69.39960354 - 74.89585283
  - 74.89585284 - 80.39210214
  - 80.39210215 - 85.88835144

**ArcToolbox**

- 3D Analyst Tools
- Analysis Tools
- Cartography Tools
- Conversion Tools
- Data Interoperability Tools
- Data Management Tools
- Geocoding Tools
- Geostatistical Analyst Tools
- Linear Referencing Tools
- Mobile Tools
- Multidimension Tools
- Network Analyst Tools
- Samples
- Schematics Tools
- Server Tools
- Spatial Analyst Tools
- Spatial Statistics Tools
- Tracking Analyst Tools

**Legend Wizard**

Legend Frame

Border

Background

Drop Shadow

Gap: 10.00 Rounding: 0 %

Preview

< Voltar **Avançar >** Cancelar

Display Source Selection Favorites Index Search Results Drawing Arial 10 B I U A 43% -7.08 5.63 Inches

**Layers**

- PM10
  - munic\_Cetesb\_Dissolve
  - pm10mediaRec
    - 30
    - 40
    - 50
    - 60
    - 70
    - >80
- PM10\_media
  - 36.4221077 - 41.918357
  - 41.91835701 - 47.41460631
  - 47.41460632 - 52.91085561
  - 52.91085562 - 58.40710492
  - 58.40710493 - 63.90335422
  - 63.90335423 - 69.39960353
  - 69.39960354 - 74.89585283
  - 74.89585284 - 80.39210214
  - 80.39210215 - 85.88835144

**ArcToolbox**

- 3D Analyst Tools
- Analysis Tools
- Cartography Tools
- Conversion Tools
- Data Interoperability Tools
- Data Management Tools
- Geocoding Tools
- Geostatistical Analyst Tools
- Linear Referencing Tools
- Mobile Tools
- Multidimension Tools
- Network Analyst Tools
- Samples
- Schematics Tools
- Server Tools
- Spatial Analyst Tools
- Spatial Statistics Tools
- Tracking Analyst Tools

**Legend Wizard**

You can change the size and shape of the symbol patch used to represent line and polygon features in your legend.

Select one or more legend items whose patches you want to change.

Legend Items:

- pm10mediaRec

Patch:

Width: 30.00 (pts.)

Height: 15.00 (pts.)

Line: [Line Style]

Area: [Area Color]

Preview

< Voltar **Avançar >** Cancelar





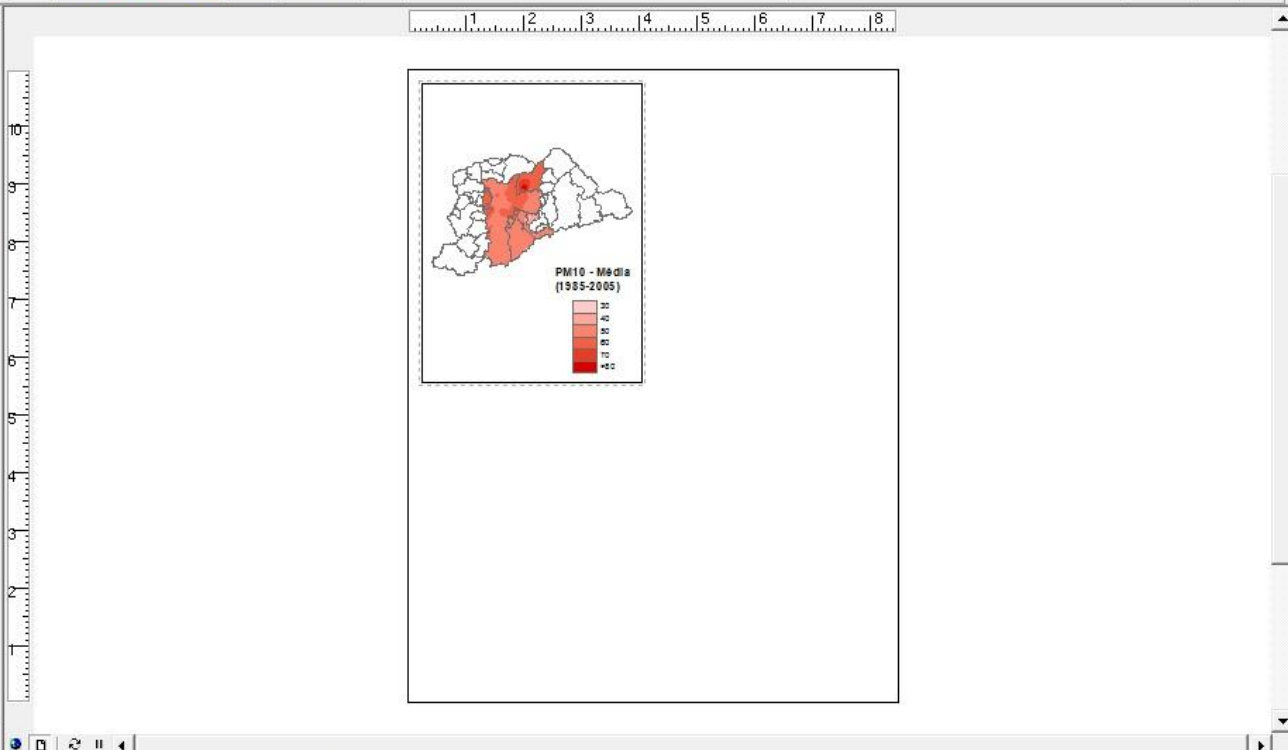


Map navigation and layout tools including pan, zoom, and print icons. A dropdown menu is open from the 'Insert' menu, listing options: Title, Text, Neatline..., Legend..., North Arrow..., **Scale Bar...** (highlighted), Scale Text..., Picture..., and Object...

Layers panel showing a tree view of map layers. The 'pm10mediaRec' layer is expanded, showing a legend with color-coded values: 30, 40, 50, 60, 70, and >80. Below it, the 'PM10\_media' layer is expanded, showing a legend with 11 numerical ranges and their corresponding colors.

Toolbox containing various ArcGIS tool categories such as 3D Analyst Tools, Analysis Tools, Cartography Tools, Conversion Tools, Data Interoperability Tools, Data Management Tools, Geocoding Tools, Geostatistical Analyst Tools, Linear Referencing Tools, Mobile Tools, Multidimension Tools, Network Analyst Tools, Samples, Schematics Tools, Server Tools, Spatial Analyst Tools, Spatial Statistics Tools, and Tracking Analyst Tools.

Map navigation and task controls including a scale bar (1:1,742,293), a task dropdown menu set to 'Create New Feature', and a target dropdown menu.



Scale Bar Selector

Preview

Scale to fit page

Properties...

More Styles

Save... Reset

OK Cancel

Scale Bar

Scale and Units | Numbers and Marks | Format

Scale

Division value: Auto

Number of divisions: 2

Number of subdivisions: 4

Show one division before zero

When resizing...  
Adjust division value

Units

Division Units: Kilometers

Label Position: after labels

Label: Km Symbol...

Gap: 3 pt

OK Cancel Aplicar

- 47.41460632 - 52.9108556
- 52.91085562 - 58.4071049
- 58.40710493 - 63.9033542
- 63.90335423 - 69.3996035
- 69.39960354 - 74.8958528
- 74.89585284 - 80.3921021
- 80.39210215 - 85.8883514

New Data Frame

Display Source Selection

Spatial Statistics Tools

Tracking Analyst Tools

Favorites Index Search Results

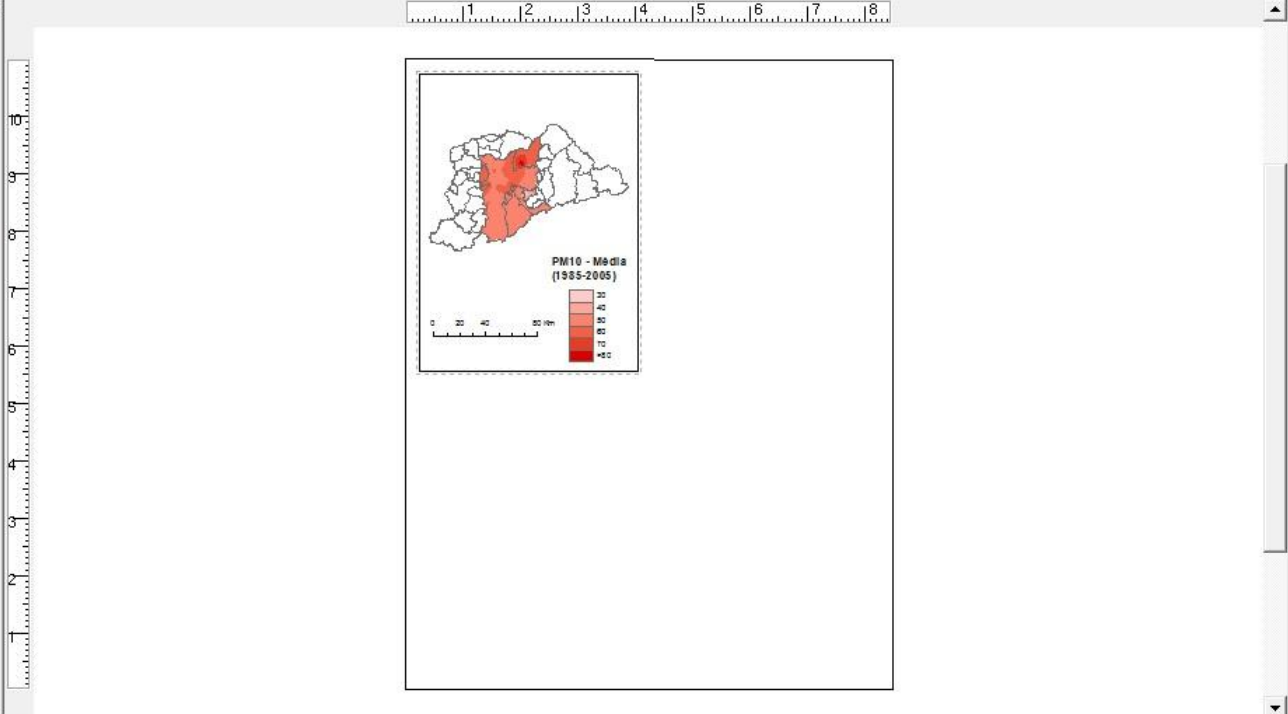
**Layers**

- PM10
- mun\_RMSP
  -
- munic\_Cetesb\_Dis
- pm10mediaRec
  - 30
  - 40
  - 50
  - 60
  - 70
  - >80
- PM10\_media
  - 36.4221077 - 41.918357
  - 41.91835701 - 47.4146063
  - 47.41460632 - 52.9108556
  - 52.91085562 - 58.4071049
  - 58.40710493 - 63.9033542
  - 63.90335423 - 69.3996035
  - 69.39960354 - 74.8958528
  - 74.89585284 - 80.3921021
  - 80.39210215 - 85.8883514

New Data Frame

Toolbox

- 3D Analyst Tools
- Analysis Tools
- Cartography Tools
- Conversion Tools
- Data Interoperability Tools
- Data Management Tools
- Geocoding Tools
- Geostatistical Analyst Tools
- Linear Referencing Tools
- Mobile Tools
- Multidimension Tools
- Network Analyst Tools
- Samples
- Schematics Tools
- Server Tools
- Spatial Analyst Tools
- Spatial Statistics Tools
- Tracking Analyst Tools



**Layers**

- PM10
  - mun\_RMSP
  - pm10mediaRec
    - 30
    - 40
    - 50
    - 60
    - 70
    - >80
  - PM10\_media
    - 36.4221077 - 41.918357
    - 41.91835701 - 47.4146063
    - 47.41460632 - 52.9108556
    - 52.91085562 - 58.4071049
    - 58.40710493 - 63.9033542
    - 63.90335423 - 69.3996035
    - 69.39960354 - 74.8958528
    - 74.89585284 - 80.3921021
    - 80.39210215 - 85.8883514
- New Data Frame

**ArcToolbox**

- 3D Analyst Tools
- Analysis Tools
- Cartography Tools
- Conversion Tools
- Data Interoperability Tools
- Data Management Tools
- Geocoding Tools
- Geostatistical Analyst Tools
- Linear Referencing Tools
- Mobile Tools
- Multidimension Tools
- Network Analyst Tools
- Samples
- Schematics Tools
- Server Tools
- Spatial Analyst Tools
- Spatial Statistics Tools
- Tracking Analyst Tools

**Properties**

Text | Size and Position

Text:  
Fonte: CETESB 2006

Font: Arial 10.00

Angle: 0.00 Character Spacing: 0.00

Leading: 0.00

About Formatting Text Change Symbol...

OK Cancel Aplicar

Media (005)

Clique duplo para editar - Inserir a Fonte



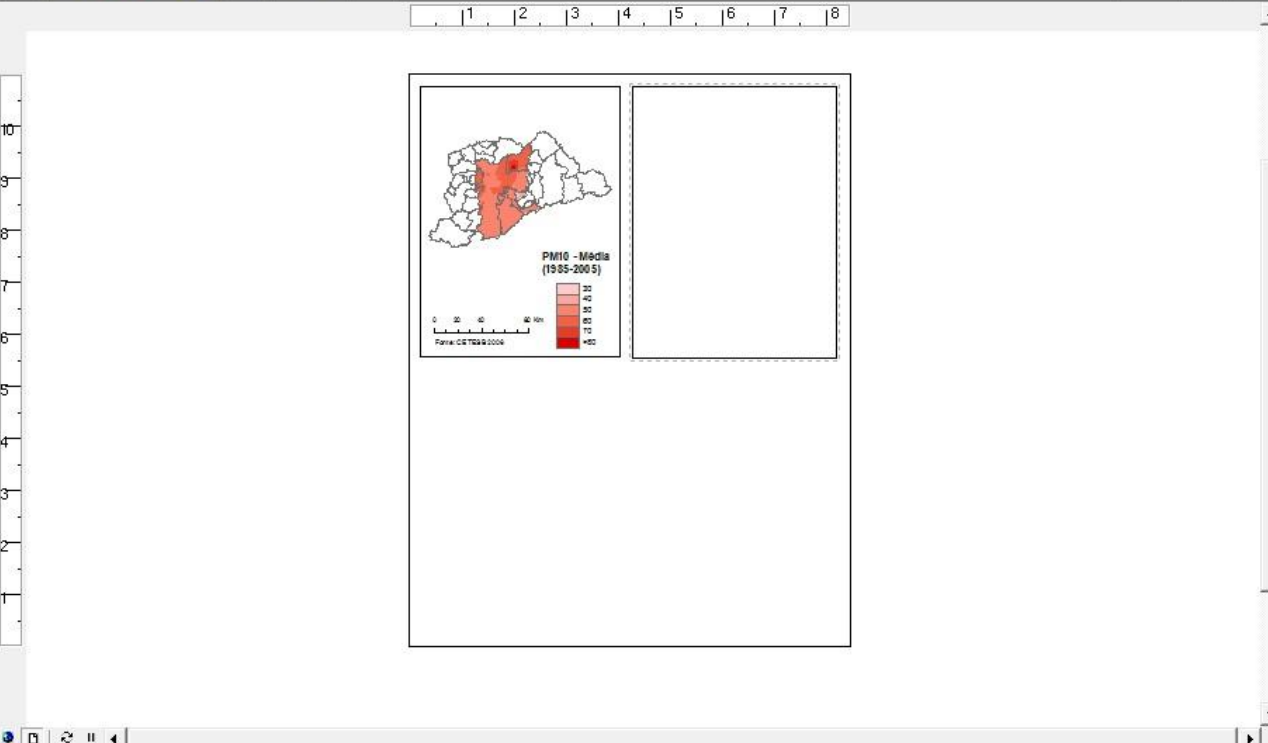
**Layers**

- PM10
- mun\_RMSP
- munic\_Cetesb\_Dissolve
- pm10mediaRec
  - 30
  - 40
  - 50
  - 60
  - 70
  - >80
- PM10\_media
  - 36.4221077 - 41.918357
  - 41.91835701 - 47.4146063
  - 47.41460632 - 52.9108556
  - 52.91085562 - 58.4071049
  - 58.40710493 - 63.9033542
  - 63.90335423 - 69.3996035
  - 69.39960354 - 74.8958528
  - 74.89585284 - 80.3921021
  - 80.39210215 - 85.8883514
- New Data Frame**

Clickar, segurar e arrastar para o dataframe abaixo

**ArcToolbox**

- 3D Analyst Tools
- Analysis Tools
- Cartography Tools
- Conversion Tools
- Data Interoperability Tools
- Data Management Tools
- Geocoding Tools
- Geostatistical Analyst Tools
- Linear Referencing Tools
- Mobile Tools
- Multidimension Tools
- Network Analyst Tools
- Samples
- Schematics Tools
- Server Tools
- Spatial Analyst Tools
- Spatial Statistics Tools
- Tracking Analyst Tools



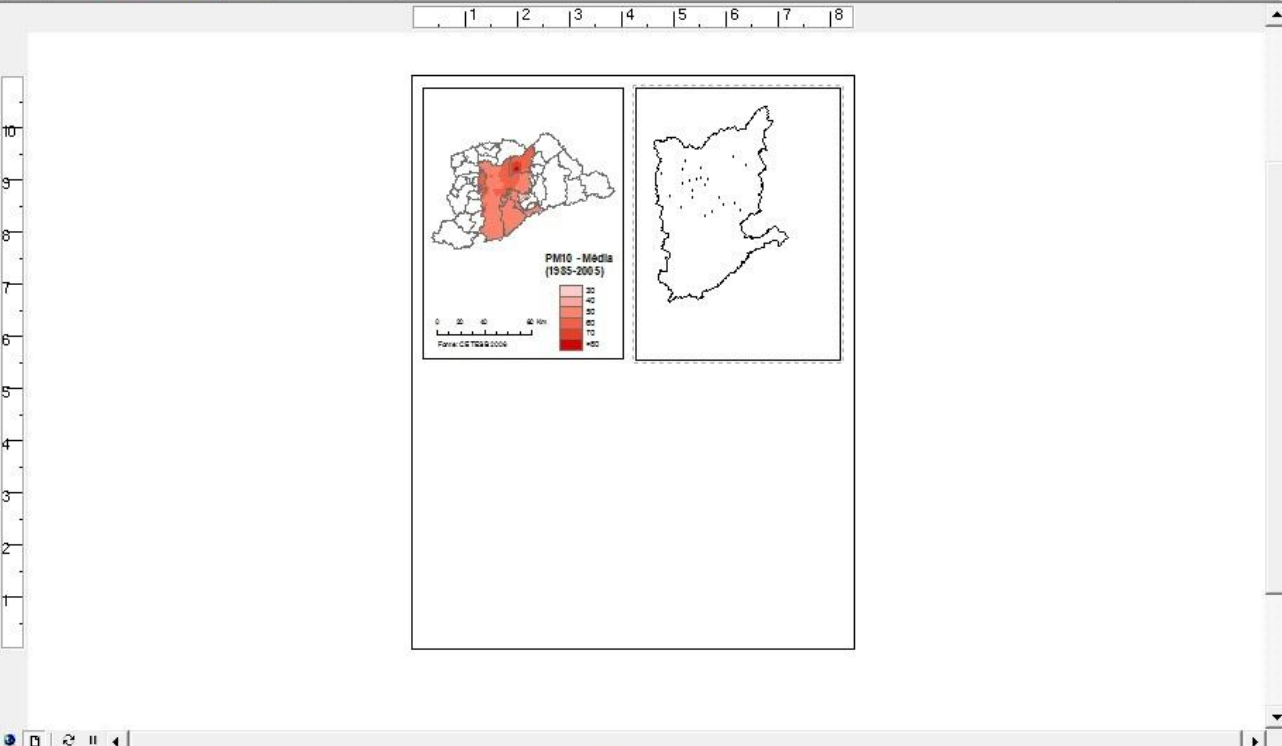


- pm10mediaRec
  - 30
  - 40
  - 50
  - 60
  - 70
  - >80
- PM10\_media
  - 36.4221077 - 41.918357
  - 41.91835701 - 47.4146063
  - 47.41460632 - 52.9108556
  - 52.91085562 - 58.4071049
  - 58.40710493 - 63.9033542
  - 63.90335423 - 69.3996035
  - 69.39960354 - 74.8958528
  - 74.89585284 - 80.3921021
  - 80.39210215 - 85.8883514
- New Data Frame
  - PM10
    - mun\_RMSP
    - munic\_Cetesb\_Dissolve

ArcToolbox

- 3D Analyst Tools
- Analysis Tools
- Cartography Tools
- Conversion Tools
- Data Interoperability Tools
- Data Management Tools
- Geocoding Tools
- Geostatistical Analyst Tools
- Linear Referencing Tools
- Mobile Tools
- Multidimension Tools
- Network Analyst Tools
- Samples
- Schematics Tools
- Server Tools
- Spatial Analyst Tools
- Spatial Statistics Tools
- Tracking Analyst Tools

Elaborar um mapa Isaritmico para o ano 1988 - Seguir os passos anteriores





- Title
- Text**
- Neatline...
- Legend...
- North Arrow...
- Scale Bar...
- Scale Text...
- Picture...
- Object...

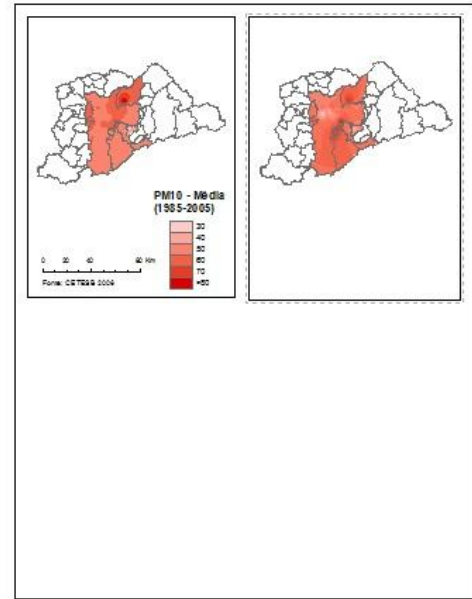
**New Data Frame**

- PM10
  - mun\_RMSP
  - munic\_Cetesb\_Dis
  - pm10\_1988\_rec
    - 0
    - 10
    - 20
    - 30
    - 40
    - 50
    - 60
    - 70
    - 80
    - 90
    - 100
    - 110
    - >120
  - pm10\_1988
    - 0.292411089 - 13.8069349
    - 13.806935 - 27.3214589
    - 27.32145891 - 40.8359828

Toolbox

- 3D Analyst Tools
- Analysis Tools
- Cartography Tools
- Conversion Tools
- Data Interoperability Tools
- Data Management Tools
- Geocoding Tools
- Geostatistical Analyst Tools
- Linear Referencing Tools
- Mobile Tools
- Multidimension Tools
- Network Analyst Tools
- Samples
- Schematics Tools
- Server Tools
- Spatial Analyst Tools
- Spatial Statistics Tools
- Tracking Analyst Tools

Inserir Legenda, Escala e Fonte - Seguir os passos anteriores



1:1,703,808

ArcToolbox

- 3D Analyst Tools
- Analysis Tools
- Cartography Tools
- Conversion Tools
- Data Interoperability Tools
- Data Management Tools
- Geocoding Tools
- Geostatistical Analyst Tools
- Linear Referencing Tools
- Mobile Tools
- Multidimension Tools
- Network Analyst Tools
- Samples
- Schematics Tools
- Server Tools
- Spatial Analyst Tools
- Spatial Statistics Tools
- Tracking Analyst Tools

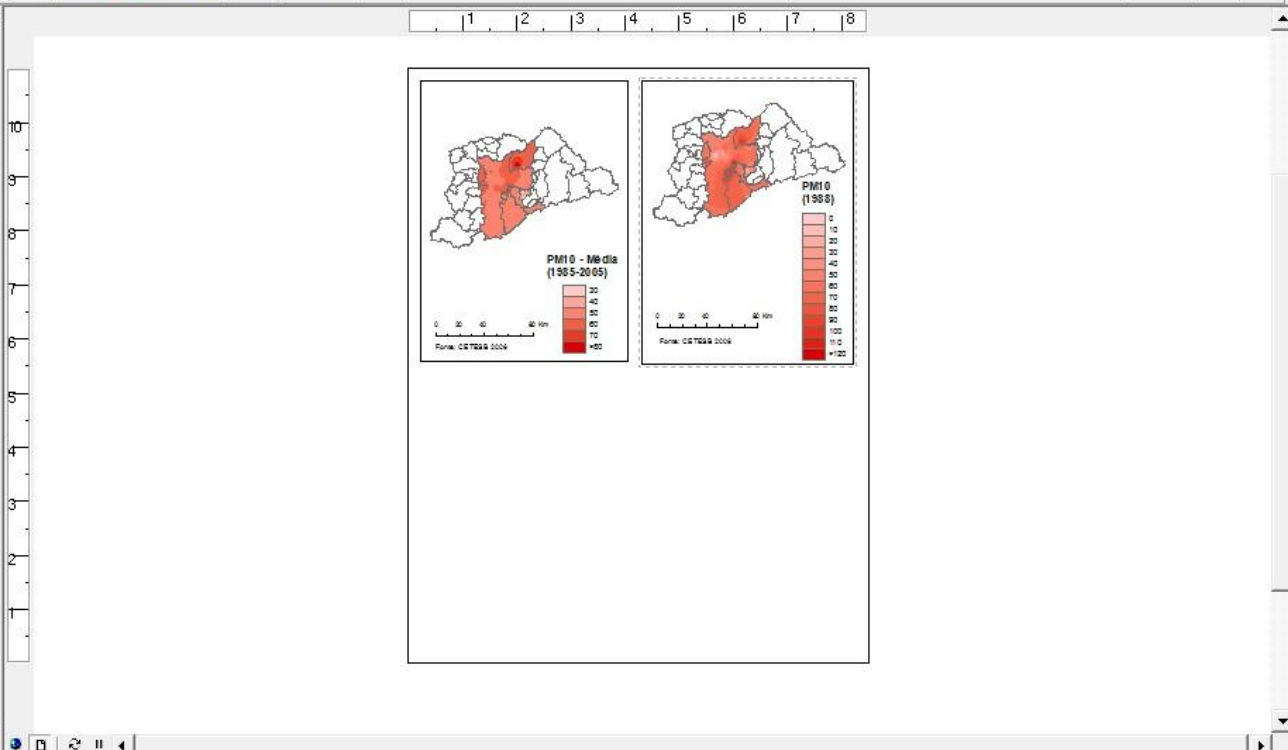
69.39960354 - 74.8958528  
74.89585284 - 80.3921021  
80.39210215 - 85.8883514

New Data Frame

- PM10
  - mun\_RMSP
  - pm10\_1988\_rec
    - 0
    - 10
    - 20
    - 30
    - 40
    - 50
    - 60
    - 70
    - 80
    - 90
    - 100
    - 110
    - >120
  - pm10\_1988

Display Source Selection

Favorites Index Search Results





Legend for pm10\_1988\_rec:

- 0
- 10
- 20
- 30
- 40
- 50
- 60
- 70
- 80
- 90
- 100
- 110
- >120

Legend for pm10\_1988:

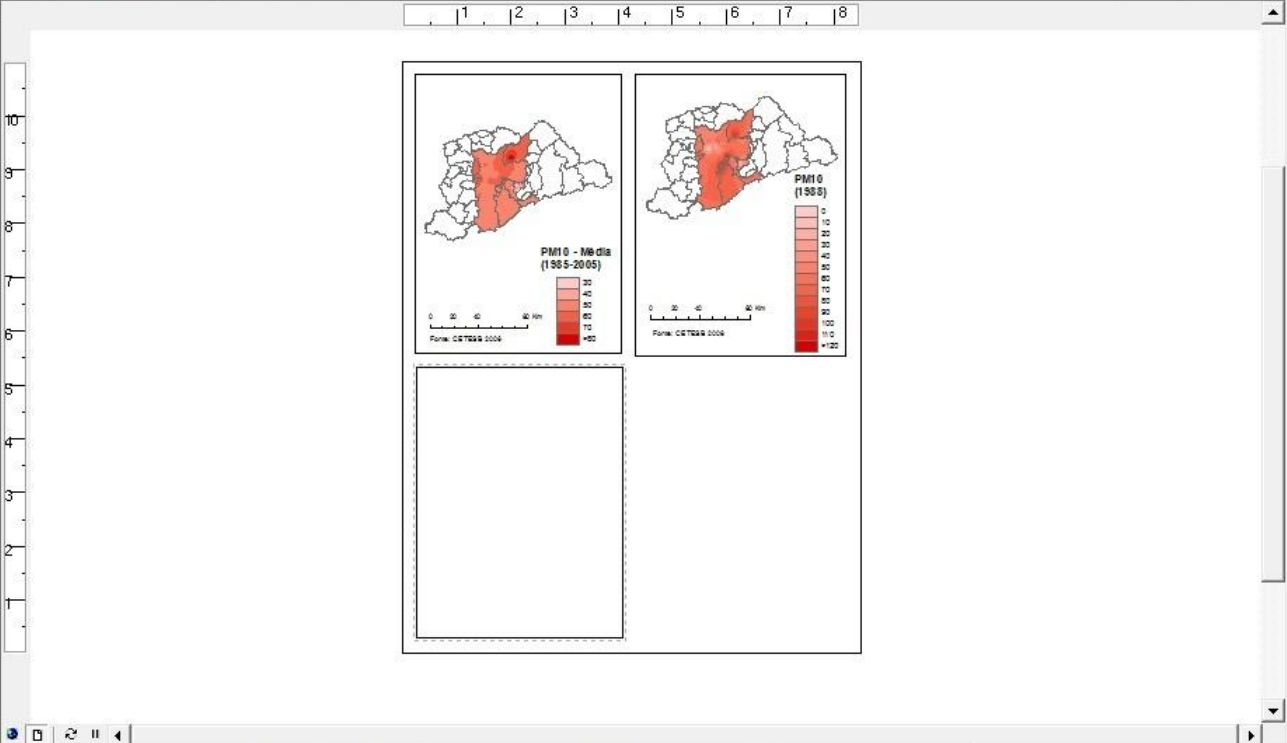
- 0.292411089 - 13.8069349
- 13.806935 - 27.3214589
- 27.32145891 - 40.8359828
- 40.83598281 - 54.3505067
- 54.35050671 - 67.8650306
- 67.86503062 - 81.3795545
- 81.37955452 - 94.8940784
- 94.89407842 - 108.408602
- 108.4086024 - 121.923126

New Data Frame 2

ArcToolbox

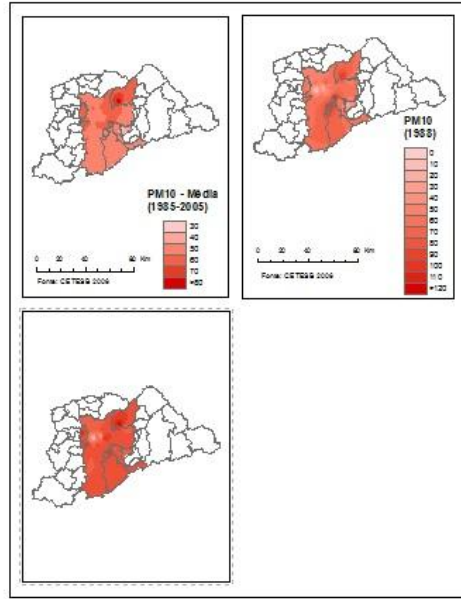
- 3D Analyst Tools
- Analysis Tools
- Cartography Tools
- Conversion Tools
- Data Interoperability Tools
- Data Management Tools
- Geocoding Tools
- Geostatistical Analyst Tools
- Linear Referencing Tools
- Mobile Tools
- Multidimension Tools
- Network Analyst Tools
- Samples
- Schematics Tools
- Server Tools
- Spatial Analyst Tools
- Spatial Statistics Tools
- Tracking Analyst Tools

Elaborar um mapa  
Isaritmico para o ano  
1995  
-Seguir os passos  
anteriores



- 108.4086024 - 1
- New Data Frame 2**
  - PM10
    - mun\_Cetesb\_Dis:
      - mun\_RMSP
    - pm10\_1995\_rec
      - 0
      - 10
      - 20
      - 30
      - 40
      - 50
      - 60
      - 70
      - 80
      - 90
      - >100
    - pm10\_1995
      - 0.362166077 - 11.9869458
      - 11.98694582 - 23.6117255
      - 23.61172556 - 35.2365052
      - 35.2365053 - 46.86128503

Inserir Legenda, Escala e Fonte



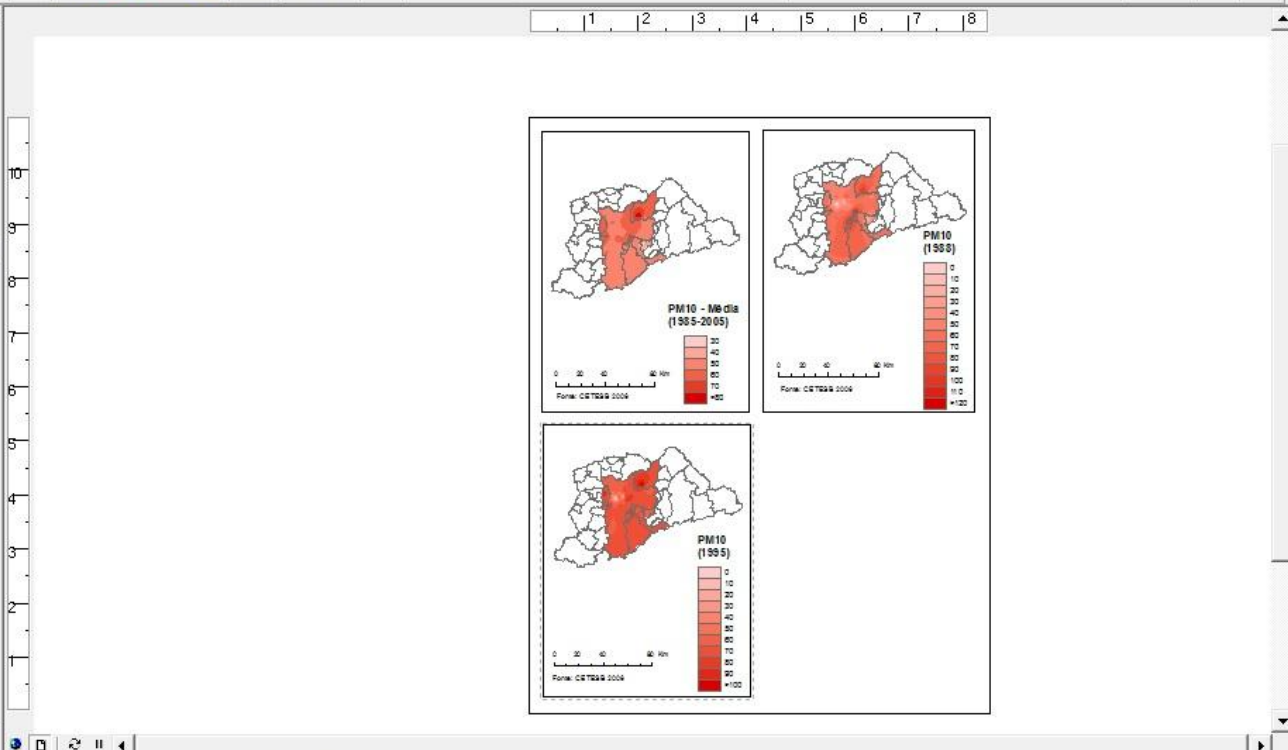
108.4086024 - 121.923126

New Data Frame 2

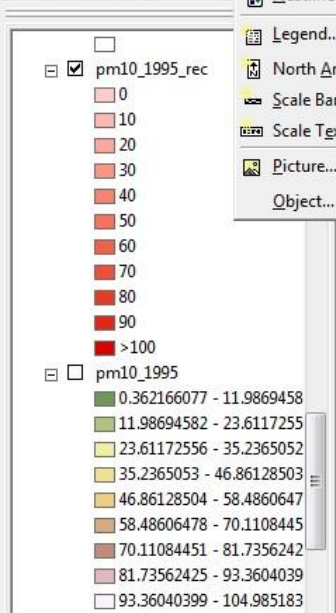
- PM10
  - mun\_Cetesb\_Dissolve
  - mun\_RMSP
  - pm10\_1995
    - 0
    - 10
    - 20
    - 30
    - 40
    - 50
    - 60
    - 70
    - 80
    - 90
    - >100
  - pm10\_1995
    - 0.362166077 - 11.9869458
    - 11.98694582 - 23.6117255
    - 23.61172556 - 35.2365052
    - 35.2365053 - 46.86128503

ArcToolbox

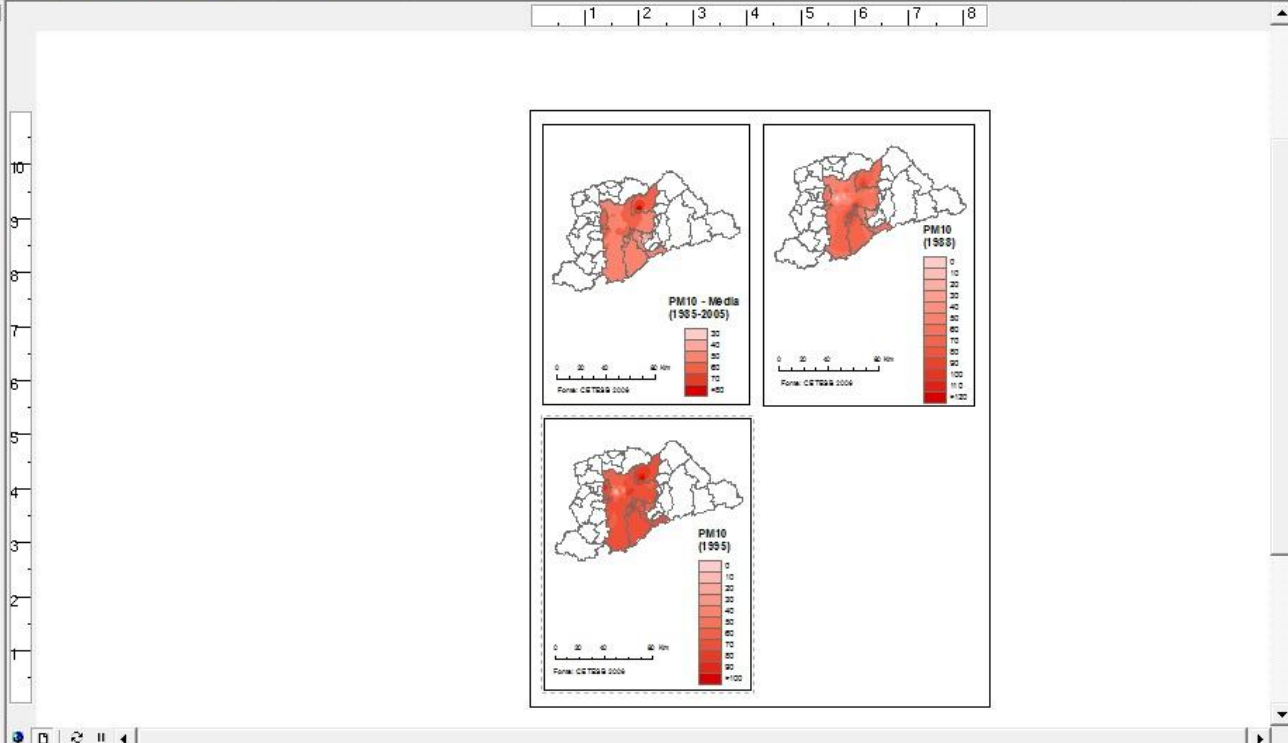
- 3D Analyst Tools
- Analysis Tools
- Cartography Tools
- Conversion Tools
- Data Interoperability Tools
- Data Management Tools
- Geocoding Tools
- Geostatistical Analyst Tools
- Linear Referencing Tools
- Mobile Tools
- Multidimension Tools
- Network Analyst Tools
- Samples
- Schematics Tools
- Server Tools
- Spatial Analyst Tools
- Spatial Statistics Tools
- Tracking Analyst Tools







- Toolbox
- 3D Analyst Tools
- Analysis Tools
- Cartography Tools
- Conversion Tools
- Data Interoperability Tools
- Data Management Tools
- Geocoding Tools
- Geostatistical Analyst Tools
- Linear Referencing Tools
- Mobile Tools
- Multidimension Tools
- Network Analyst Tools
- Samples
- Schematics Tools
- Server Tools
- Spatial Analyst Tools
- Spatial Statistics Tools
- Tracking Analyst Tools





Legend

- 30
- 40
- 50
- 60
- 70
- 80
- 90
- >100

pm10\_1995

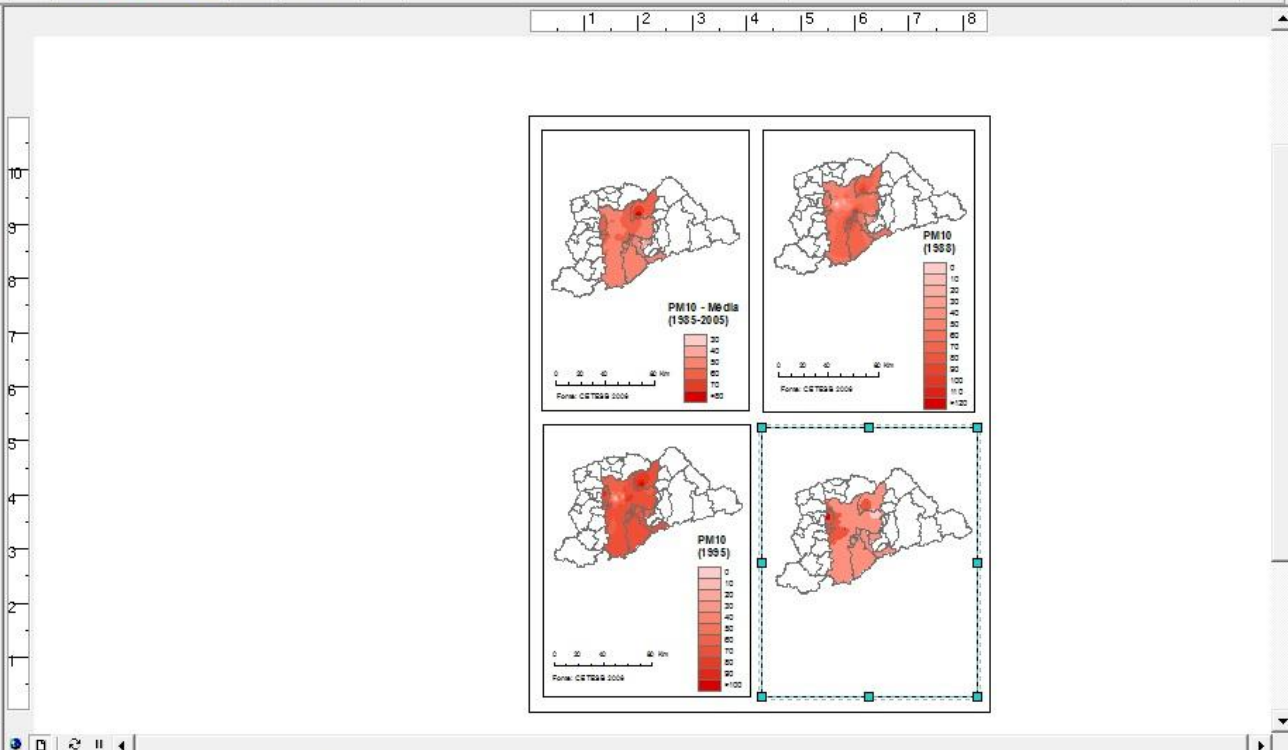
- 0.362166077 - 11.9869458
- 11.98694582 - 23.6117255
- 23.61172556 - 35.2365052
- 35.2365053 - 46.86128503
- 46.86128504 - 58.4860647
- 58.48606478 - 70.1108445
- 70.11084451 - 81.7356242
- 81.73562425 - 93.3604039
- 93.36040399 - 104.985183

New Data Frame 3

- PM10
  - munic\_Cetesb\_Dissolve
  - mun\_RMSP**

ArcToolbox

- 3D Analyst Tools
- Analysis Tools
- Cartography Tools
- Conversion Tools
- Data Interoperability Tools
- Data Management Tools
- Geocoding Tools
- Geostatistical Analyst Tools
- Linear Referencing Tools
- Mobile Tools
- Multidimension Tools
- Network Analyst Tools
- Samples
- Schematics Tools
- Server Tools
- Spatial Analyst Tools
- Spatial Statistics Tools
- Tracking Analyst Tools



- Title
- Text**
- Neatline...
- Legend...
- North Arrow...
- Scale Bar...
- Scale Text...
- Picture...
- Object...

- 30
  - 40
  - 50
  - 60
  - 70
  - 80
  - 90
  - >100
- pm10\_1995
- 0.362166077 - 11.9869458
  - 11.98694582 - 23.6117255
  - 23.61172556 - 35.2365052
  - 35.2365053 - 46.86128503
  - 46.86128504 - 58.4860647
  - 58.48606478 - 70.1108445
  - 70.11084451 - 81.7356242
  - 81.73562425 - 93.3604039
  - 93.36040399 - 104.985183

- New Data Frame 3
- PM10
  - munic\_Cetesb\_Dissolve
  - mun\_RMSP**

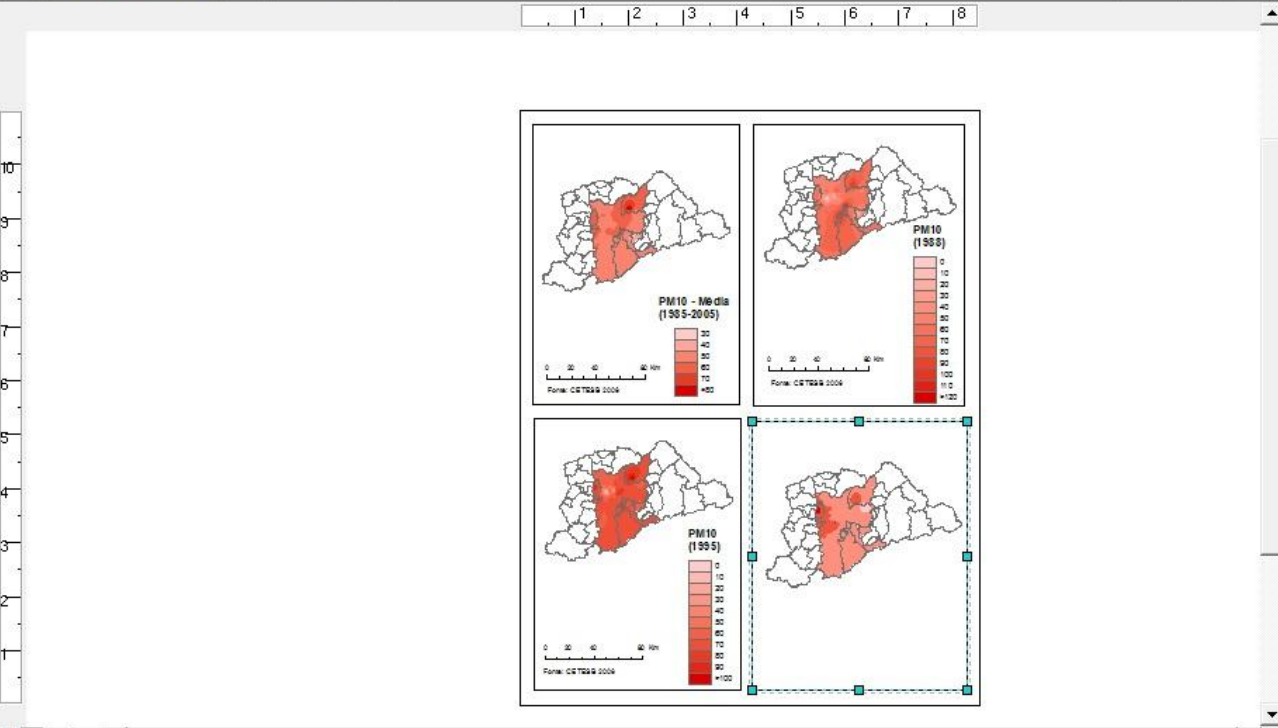
- Toolbox
- 3D Analyst Tools
  - Analysis Tools
  - Cartography Tools
  - Conversion Tools
  - Data Interoperability Tools
  - Data Management Tools
  - Geocoding Tools
  - Geostatistical Analyst Tools
  - Linear Referencing Tools
  - Mobile Tools
  - Multidimension Tools
  - Network Analyst Tools
  - Samples
  - Schematics Tools
  - Server Tools
  - Spatial Analyst Tools
  - Spatial Statistics Tools
  - Tracking Analyst Tools

Topology: [Dropdown]

1:1,673,272

Editor [Dropdown]

Task: Create New Feature Target: [Dropdown]



**ArcToolbox**

- 3D Analyst Tools
- Analysis Tools
- Cartography Tools
- Conversion Tools
- Data Interoperability Tools
- Data Management Tools
- Geocoding Tools
- Geostatistical Analyst Tools
- Linear Referencing Tools
- Mobile Tools
- Multidimension Tools
- Network Analyst Tools
- Samples
- Schematics Tools
- Server Tools
- Spatial Analyst Tools
- Spatial Statistics Tools
- Tracking Analyst Tools

**Legend**

- 30
- 40
- 50
- 60
- 70
- 80
- 90
- >100

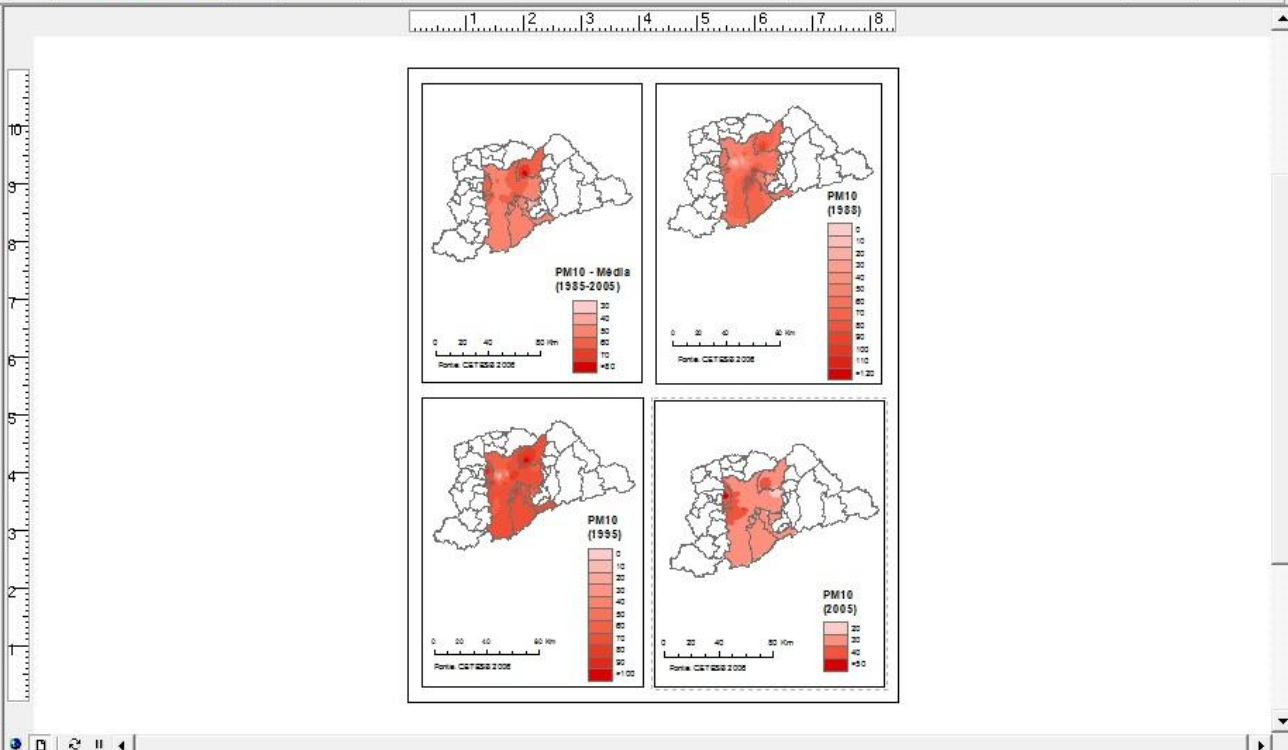
**pm10\_1995**

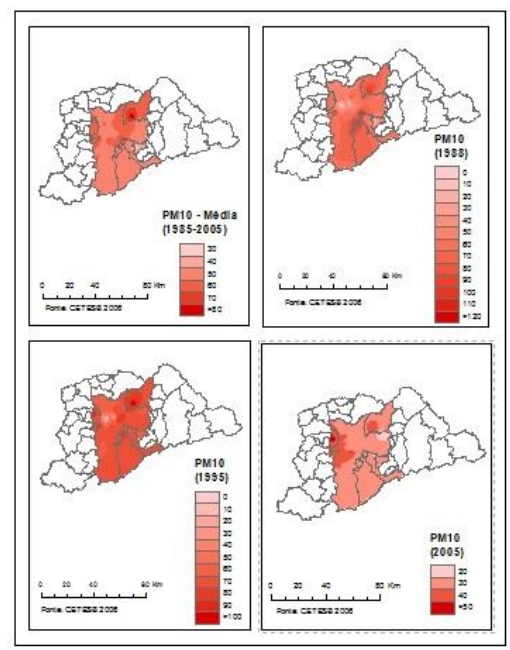
- 0.362166077 - 11.9869458
- 11.98694582 - 23.6117255
- 23.61172556 - 35.2365052
- 35.2365053 - 46.86128503
- 46.86128504 - 58.4860647
- 58.48606478 - 70.1108445
- 70.11084451 - 81.7356242
- 81.73562425 - 93.3604039
- 93.36040399 - 104.985183

**New Data Frame 3**

- PM10
  - munic\_Cetesb\_Dissolve
  - mun\_RMSP**

Display Source Selection Favorites Index Search Results





North Arrow Selector

Preview:

Scale to fit page

Properties...

More Styles

Save... Reset

**OK** Cancel

93.36040399 - 104.985183

**New Data Frame 3**

- PM10
  - munic\_Cetesb\_Dissolve
  - mun\_RMSP

Spatial Statistics Tools

Tracking Analyst Tools

Display Source Selection

Favorites Index Search Results

Task: Create New Feature

1 2 3 4 5 6 7 8

PM10 - Media (1985-2005)

PM10 (1988)

PM10 (1995)

PM10 (2005)

0 20 40 60 Km

Roma, CST 2000 2008

0 20 40 60 Km

Roma, CST 2000 2008

0 20 40 60 Km

Roma, CST 2000 2008

0 20 40 60 Km

Roma, CST 2000 2008

Insert a north arrow in Layout view

-6.48 3.61 Inches

43%

Legend

- 30
- 40
- 50
- 60
- 70
- 80
- 90
- >100

pm10\_1995

- 0.362166077 - 11.9869458
- 11.98694582 - 23.6117255
- 23.61172556 - 35.2365052
- 35.2365053 - 46.86128503
- 46.86128504 - 58.4860647
- 58.48606478 - 70.1108445
- 70.11084451 - 81.7356242
- 81.73562425 - 93.3604039
- 93.36040399 - 104.985183

New Data Frame 3

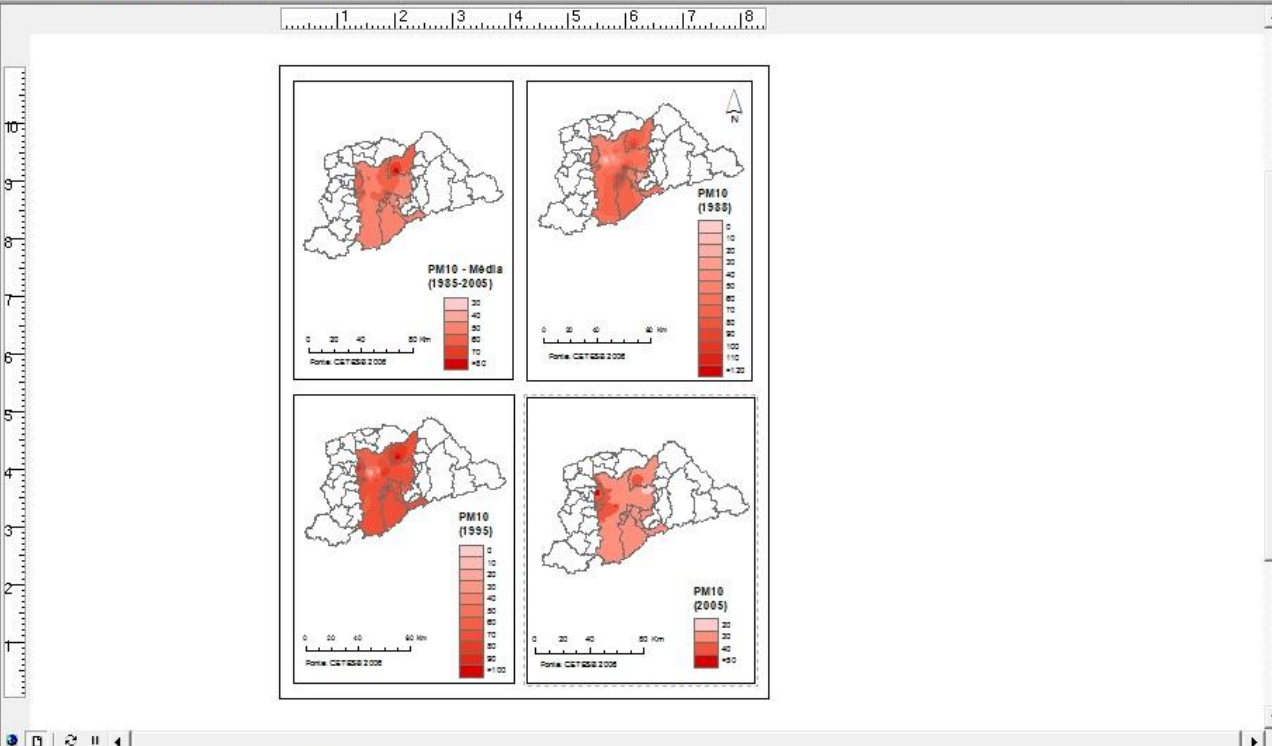
- PM10
- mun\_Cetesb\_Dissolve
- mun\_RMSP

Display Source Selection

ArcToolbox

- 3D Analyst Tools
- Analysis Tools
- Cartography Tools
- Conversion Tools
- Data Interoperability Tools
- Data Management Tools
- Geocoding Tools
- Geostatistical Analyst Tools
- Linear Referencing Tools
- Mobile Tools
- Multidimension Tools
- Network Analyst Tools
- Samples
- Schematics Tools
- Server Tools
- Spatial Analyst Tools
- Spatial Statistics Tools
- Tracking Analyst Tools

Favorites Index Search Results

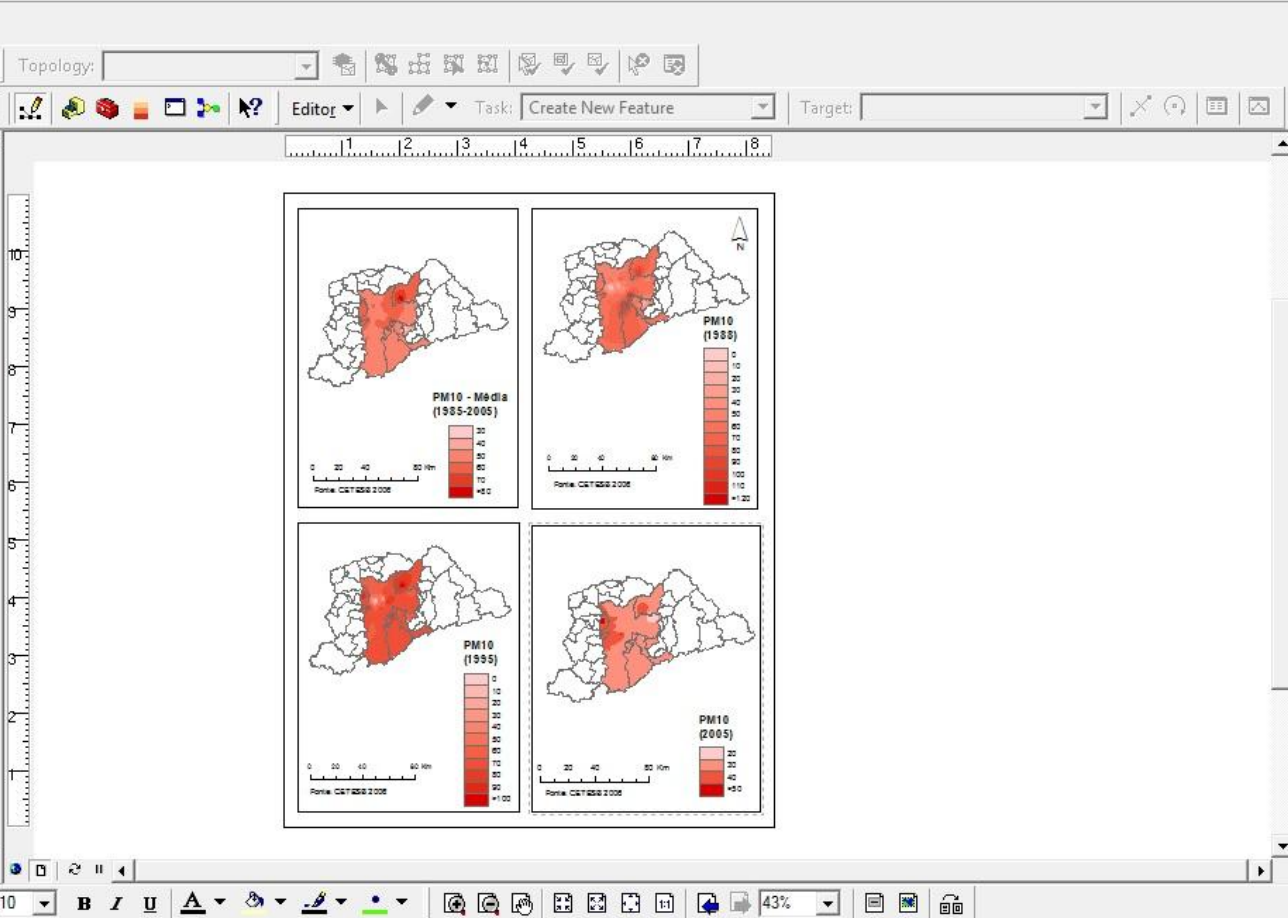




- New... Ctrl+N
- Open... Ctrl+O
- Save Ctrl+S
- Save As...
- Save A Copy...
- Add Data...
- Add Data From Resource Center...
- Page and Print Setup...
- Print Preview...
- Print...
- Document Properties...
- Import from ArcView project...
- Export Map...**
- 1 C:\Users\Ligia\Desk...\PM10.mxd
- 2 ...\Mapas\_variação\_antimicrobi...
- 3 C:\Users\Ligia...\coroplético.mxd
- 4 C:\Us...\Densidade\_dem\_SP.mxd
- 5 C:\Users\Ligia...\Distritos\_SP.mxd
- 6 C:\Users\Ligi...\TB\_SP\_0609a.mxd
- Exit Alt+F4

- ArcToolbox
  - 3D Analyst Tools
  - Analysis Tools
  - Cartography Tools
  - Conversion Tools
  - Data Interoperability Tools
  - Data Management Tools
  - Geocoding Tools
  - Geostatistical Analyst Tools
  - Linear Referencing Tools
  - Mobile Tools
  - Multidimension Tools
  - Network Analyst Tools
  - Samples
  - Schematics Tools
  - Server Tools
  - Spatial Analyst Tools
  - Spatial Statistics Tools
  - Tracking Analyst Tools

- munic\_Cetesb\_Dissolve
- mun\_RMSP





Legend for pm10\_1995:

- 30
- 40
- 50
- 60
- 70
- 80
- 90
- >100

pm10\_1995

- 0.362166077 - 11.9869458
- 11.98694582 - 23.6117255
- 23.61172556 - 35.2365052
- 35.2365053 - 46.86128503
- 46.86128504 - 58.4860647
- 58.48606478 - 70.1108445
- 70.11084451 - 81.7356242
- 81.73562425 - 93.3604039
- 93.36040399 - 104.985183

New Data Frame 3

- PM10
  - munic\_Cetesb\_Dissolve
  - mun\_RMSP**

ArcToolbox

- 3D Analyst
- Analysis Tools
- Cartography
- Conversion
- Data Interop
- Data Management
- Geocoding
- Geostatistical
- Linear Referencing
- Mobile Tools
- Multidimensional
- Network Analyst
- Samples
- Schematics
- Server Tools
- Spatial Analyst
- Spatial Statistics
- Tracking Analyst

Export Map dialog box

Salvar em: Tutorial\_Mapa

Locais

Área de Trabalho

Bibliotecas

Computador

Rede

52.jpg 53.jpg 54.jpg 55.jpg

56.jpg

Nome: Mapa\_PM10.jpg

Tipo: JPEG (\*.jpg)

Salvar Cancelar

Options

General Format

Resolution: 300 dpi

Width: 2550 pixels

Height: 3300 pixels

Write World File

Clip Output to Graphics Extent

