


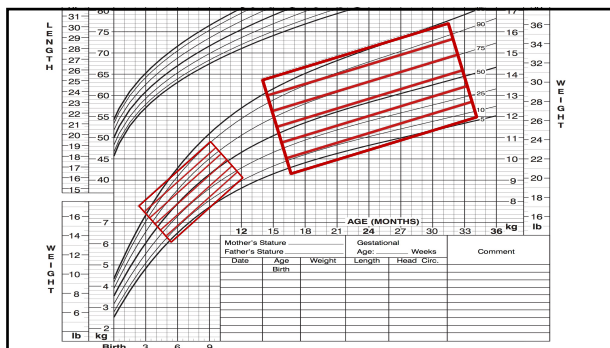
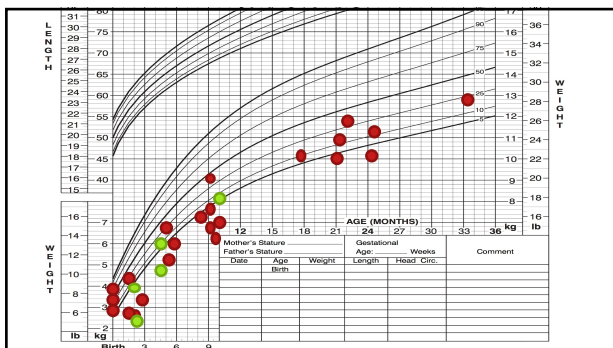
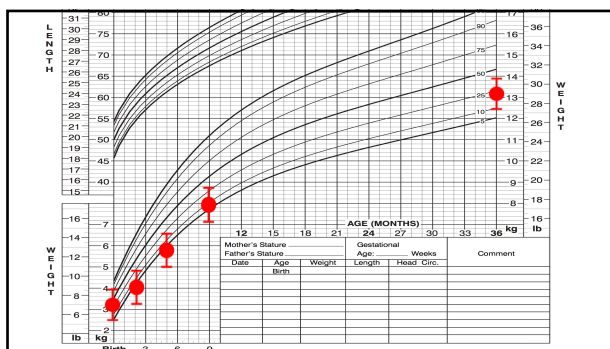
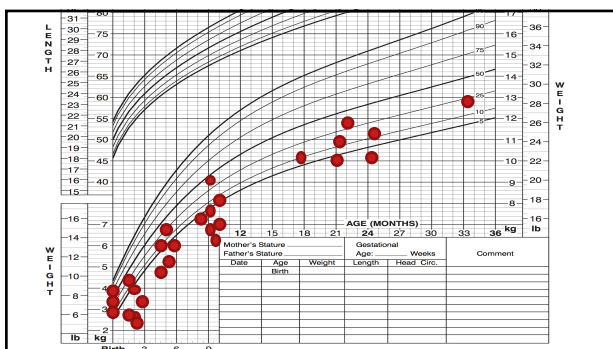
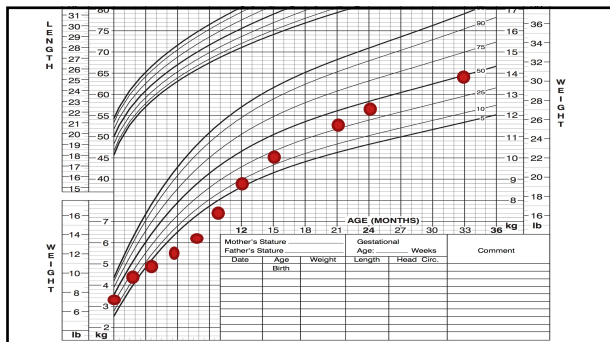


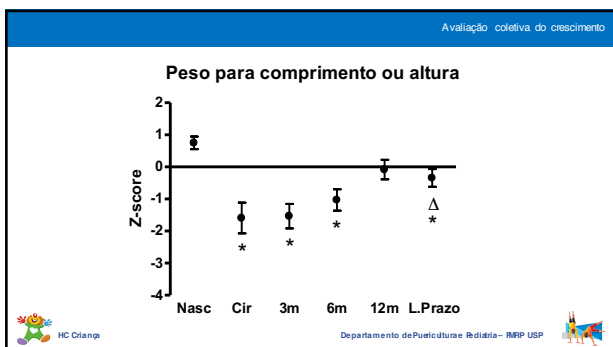
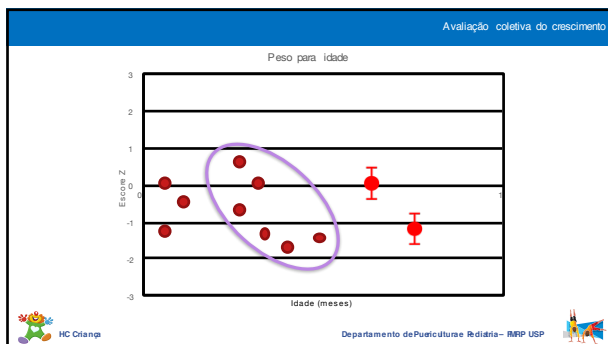
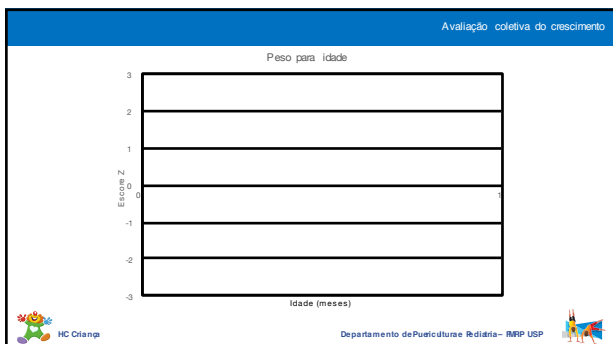
## Como avaliar coletivamente o crescimento?

Fabio Carmona

DEPARTAMENTO DE PUERICULTURA E PEDIATRIA  
Faculdade de Medicina de Ribeirão Preto  
Universidade de São Paulo



Avaliação coletiva do crescimento

*Cardiology in the Young* (2012), 22, 507-513  
doi:10.1017/S1047951111002009 © Cambridge University Press, 2012

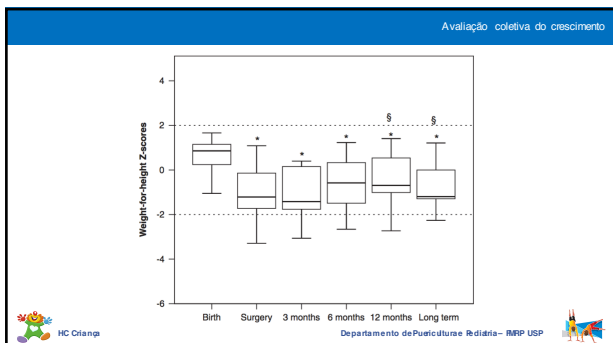
*Original Article*

**Catch-up growth in children after repair of Tetralogy of Fallot**

Fabio Carmona, Lucas S. Hatanaka, Marco A. Barbieri, Heloisa Bettiol, Roseli B. D. Toffano, Jacqueline P. Monteiro, Paulo H. Manso, Ana P. C. P. Carlotti

Department of Paediatrics, Hospital das Clínicas of the Faculty of Medicine of Ribeirão Preto, University of São Paulo, Ribeirão Preto, São Paulo, Brazil

HC Citanga | Departamento de Puericultura e Rediatria - IMRP USP



Avaliação coletiva do crescimento

ACTA PÆDIATRICA  
PEDIATRIC JOURNAL

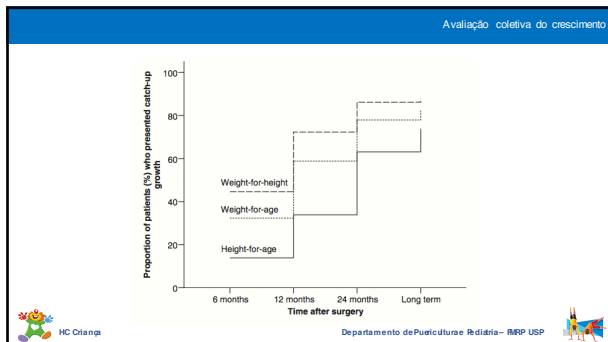
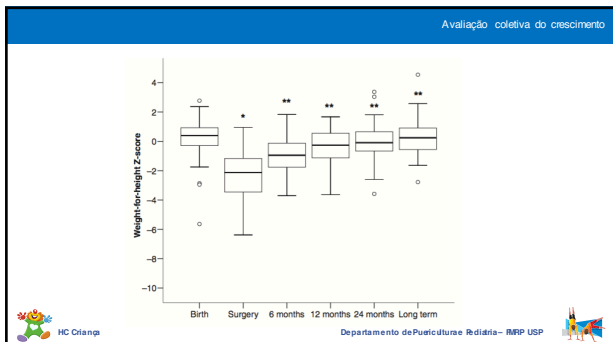
Acta Paediatrica ISSN 0803-5253

REGULAR ARTICLE

**Growth after ventricular septal defect repair: does defect size matter? A 10-year experience**

PH Manso (phtmanso@uol.com.br), F Carmona, ADN Jácomo, H Bettiol, MA Barbieri, APCP Carlotti  
Department of Pediatrics, Hospital das Clínicas, Faculty of Medicine of Ribeirão Preto, University of São Paulo, SP, Brazil

HC Citanga | Departamento de Puericultura e Rediatria - IMRP USP



Avaliação coletiva do crescimento

## Então como fazer isto?

- CDC Epi Info
  - <http://www.cdc.gov/epiinfo/index.html>
  - Curva: CDC/NCHS 2000.
- WHO Anthro
  - <http://www.who.int/childgrowth/software/en/>
  - Curvas: CDC/NCHS 2000 & WHO 2006.
- LMS Growth (para Excel)
  - <http://www.healthforallchildren.com/shop-base/shop/software/lmsgrowth/>
  - Curvas: British 1990; UK-WHO preterm & term; CDC/NCHS 2000; WHO 2006

Departamento de Puericultura e Pediatria - IMRP USP

Avaliação coletiva do crescimento

Departamento de Puericultura e Pediatria - IMRP USP

**Obrigado.**

carmona@fmrp.usp.br

DEPARTAMENTO DE PUERICULTURA E PEDIATRIA  
 Faculdade de Medicina de Ribeirão Preto  
 Universidade de São Paulo