



Aula Prática

Diptera - Nematocera

Carlos E. Winter

[originais de Alda Backx]



Aedes sp.

Mosquito de cor escura
 Áreas claras e pernas com faixas brancas
 Probóscide negra com palpos com manchas brancas

Pupa

Larva

Adulto

Ovos

2

Aedes sp.

Hospedeiros: mamíferos

ADULTOS

♂

♀

Larva

Pupa

Larva com sifão respiratório – posição vertical

Pupa flutua na superfície
 Apresenta trompeta respiratória

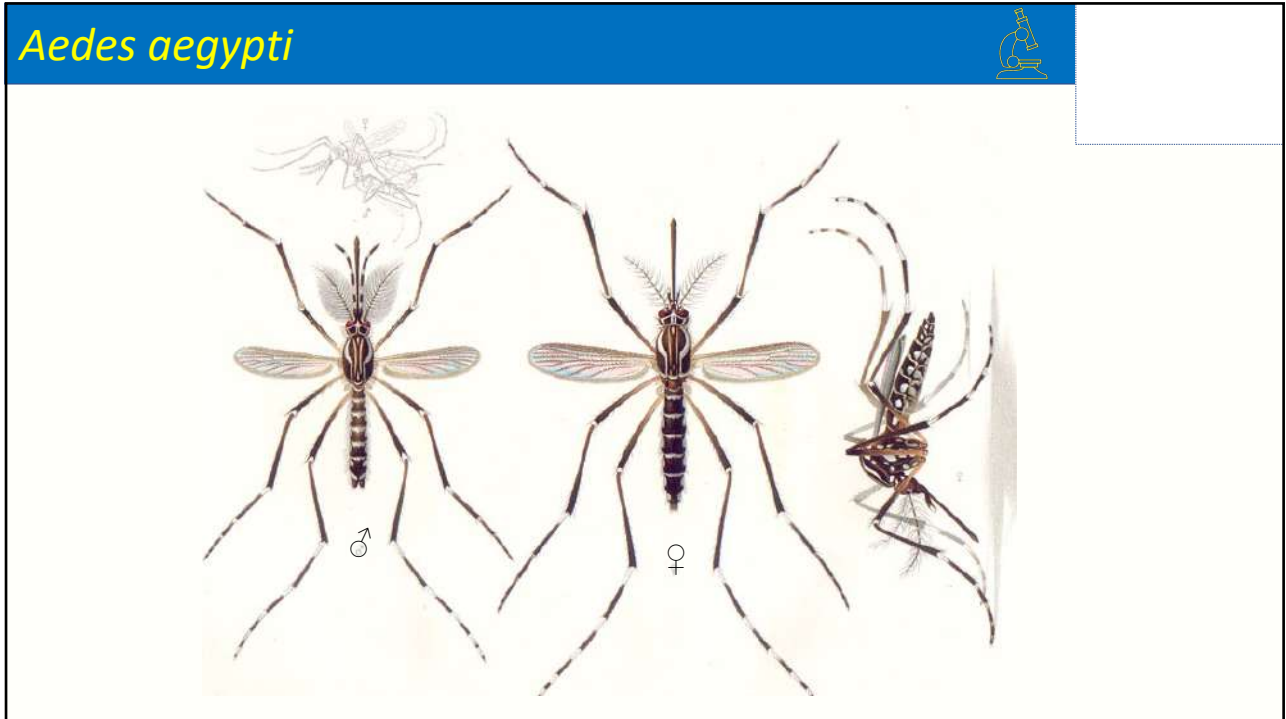
TROMPETAS RESPIRATORIAS

CEFALOTORAX

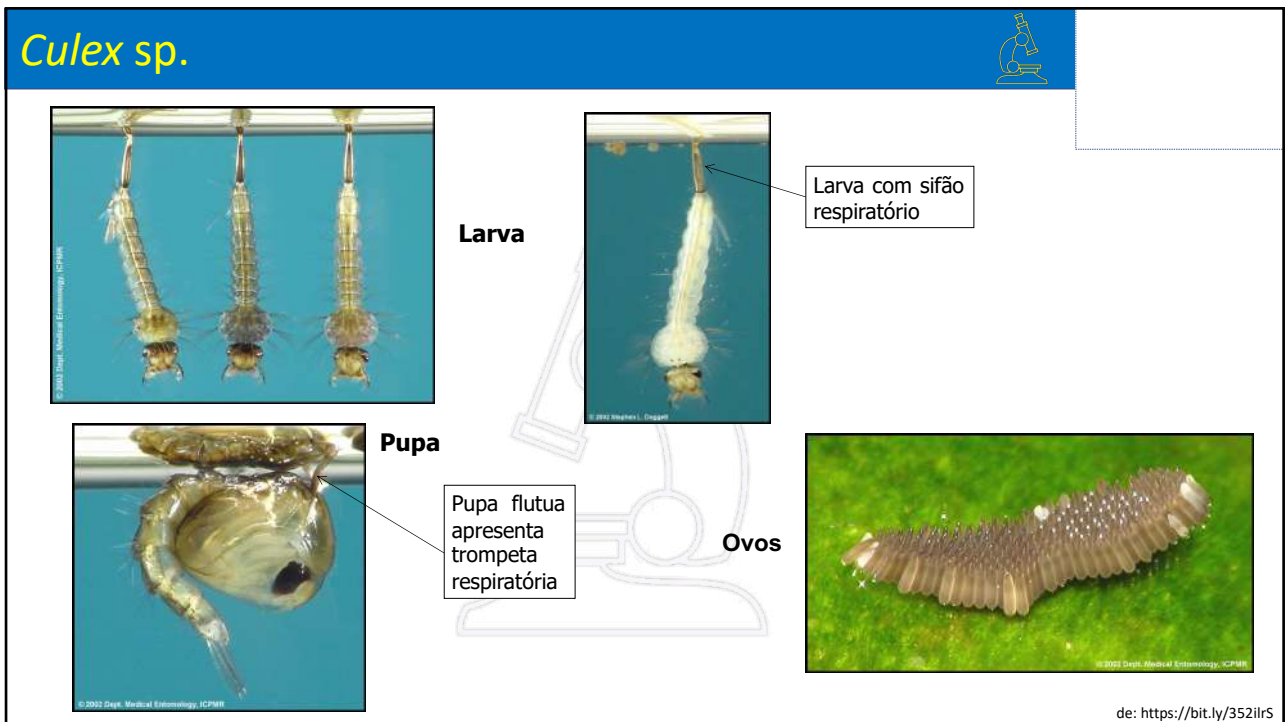
ABDOME

Aedes (Stegomyia) aegypti (Linnaeus)

3



4



5

Culex sp.

Adulto

♂

♀

Machos:
aparelho bucal incapaz de perfurar a pele, antenas muito plumosas de grande tamanho

Fêmea: é hematófaga, com probóscide longa

Hospedeiros: mamíferos e aves

de: <https://bit.ly/352lirS>


6


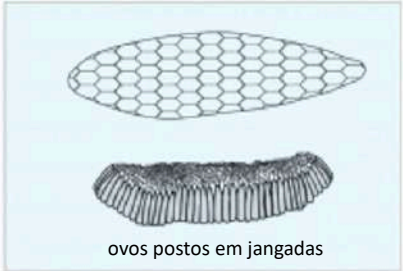


Culex quinquefasciatus

♂


♀



7

Aedes sp. x Culex sp. 

<i>Aedes sp.</i>	<i>Culex sp.</i>	
 ovos postos individualmente	 ovos postos em jangadas	OVOS
 sifão respiratório curto e robusto	 sifão respiratório longo e delgado	LARVAS

8

Aedes sp. x Culex sp. 

<i>Aedes aegypti</i>	<i>Culex quinquefasciatus</i>
	

<https://bit.ly/3N6QbNA>

9

Simulium spp.



- Tórax arqueado
- Pernas curtas
- Antenas em forma de chifre
- Asas com nervuras em somente uma parte
- Aspecto de "búfalo"
- **Hospedeiros:** mamíferos e aves

10

Simulium spp.



11