

## 23.3: RLC Series AC Circuits

### Learning Objectives

By the end of this section, you will be able to:

- Calculate the impedance, phase angle, resonant frequency, power, power factor, voltage, and/or current in a RLC series circuit.
- Draw the circuit diagram for an RLC series circuit.
- Explain the significance of the resonant frequency.

### Impedance

When alone in an AC circuit, inductors, capacitors, and resistors all impede current. How do they behave when all three occur together? Interestingly, their individual resistances in ohms do not simply add. Because inductors and capacitors behave in opposite ways, they partially to totally cancel each other's effect. [Figure](#) shows an *RLC* series circuit with an AC voltage source, the behavior of which is the subject of this section. The crux of the analysis of an *RLC* circuit is the frequency dependence of  $X_L$  and  $X_C$ , and the effect they have on the phase of voltage versus current (established in the preceding section). These give rise to the frequency dependence of the circuit, with important “resonance” features that are the basis of many applications, such as radio tuners.

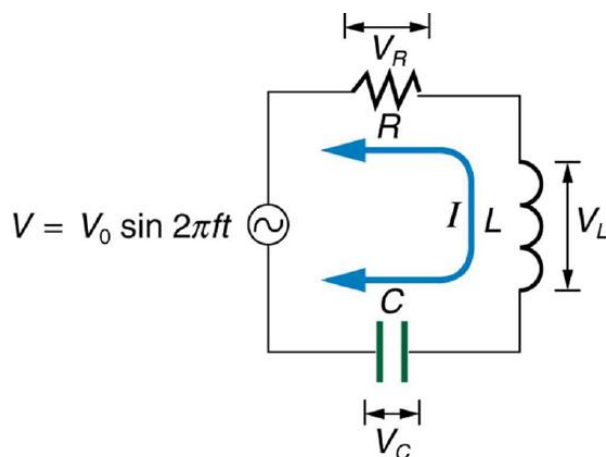


Figure 23.3.1: An RLC series circuit with an AC voltage source.

The combined effect of resistance  $R$ , inductive reactance  $X_L$ , and capacitive reactance  $X_C$  is defined to be **impedance**, an AC analogue to resistance in a DC circuit. Current, voltage, and impedance in an *RLC* circuit are related by an AC version of Ohm's law:

$$I_0 = \frac{V_0}{Z} \text{ or } I_{rms} = \frac{V_{rms}}{Z}. \quad (23.3.1)$$

Here  $I_0$  is the peak current,  $V_0$  the peak source voltage, and  $Z$  is the impedance of the circuit. The units of impedance are ohms, and its effect on the circuit is as you might expect: the greater the impedance, the smaller the current. To get an expression for  $Z$  in terms of  $R$ ,  $X_L$ , and  $X_C$ , we will now examine how the voltages across the various components are related to the source voltage. Those voltages are labeled  $V_R$ ,  $V_L$  and  $V_C$  in [Figure](#).

Conservation of charge requires current to be the same in each part of the circuit at all times, so that we can say the currents in  $R$ ,  $L$ , and  $C$  are equal and in phase. But we know from the preceding section that the voltage across the inductor  $V_L$  leads the current by one-fourth of a cycle, the voltage across the capacitor  $V_C$  follows the current by one-fourth of a cycle, and the voltage across the resistor  $V_R$  is exactly in phase with the current. [Figure](#) shows these relationships in one graph, as well as showing the total voltage around the circuit  $V = V_R + V_L + V_C$ , where all four voltages are the instantaneous values. According to Kirchhoff's loop rule, the total voltage around the circuit  $V$  is also the voltage of the source.

You can see from [Figure](#) that while  $V_R$  is in phase with the current,  $V_L$  leads by  $90^\circ$ , and  $V_C$  follows by  $90^\circ$ . Thus  $V_L$  and  $V_C$  are  $180^\circ$  out of phase (crest to trough) and tend to cancel, although not completely unless they have the same magnitude. Since the

peak voltages are not aligned (not in phase), the peak voltage  $V_0$  of the source does not equal the sum of the peak voltages across  $R$ ,  $L$ , and  $C$ . The actual relationship is

$$V_0 = \sqrt{V_{0R}^2 + (V_{0L} - V_{0C})^2}, \quad (23.3.2)$$

where  $V_{0R}$ ,  $V_{0L}$ , and  $V_{0C}$  are the peak voltages across  $R$ ,  $L$ , and  $C$ , respectively. Now, using Ohm's law and definitions from [Reactance, Inductive and Capacitive](#), we substitute  $V_0 = I_0 Z$  into the above, as well as  $V_{0R} = I_0 R$ ,  $V_{0L} = I_0 X_L$ , and  $V_{0C} = I_0 X_C$ , yielding

$$I_0 Z = \sqrt{I_0^2 R^2 + (I_0 X_L - I_0 X_C)^2} = I_0 \sqrt{R^2 + (X_L - X_C)^2}. \quad (23.3.3)$$

$I_0$  cancels to yield an expression for  $Z$ :

$$Z = \sqrt{R^2 + (X_L - X_C)^2}, \quad (23.3.4)$$

which is the impedance of an  $RLC$  series AC circuit. For circuits without a resistor, take  $R = 0$ ; for those without an inductor, take  $X_L = 0$ ; and for those without a capacitor, take  $X_C = 0$ .

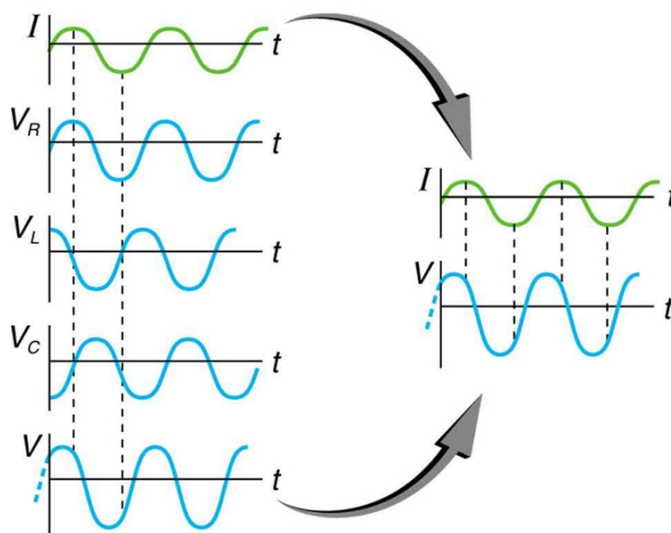


Figure 23.3.2: This graph shows the relationships of the voltages in an  $RLC$  circuit to the current. The voltages across the circuit elements add to equal the voltage of the source, which is seen to be out of phase with the current.

### Example 23.3.1 : Calculating Impedance and Current

An  $RLC$  series circuit has a  $40.0 \Omega$  resistor, a  $3.00 \text{ mH}$  inductor, and a  $5.00 \mu\text{F}$  capacitor. (a) Find the circuit's impedance at  $60.0 \text{ Hz}$  and  $10.0 \text{ kHz}$ , noting that these frequencies and the values for  $L$  and  $C$  are the same as in [link](#) and [link](#). (b) If the voltage source has  $V_{rms} = 120 \text{ V}$ , what is  $I_{rms}$  at each frequency?

#### Strategy

For each frequency, we use  $Z = \sqrt{R^2 + (X_L - X_C)^2}$  to find the impedance and then Ohm's law to find current. We can take advantage of the results of the previous two examples rather than calculate the reactances again.

#### Solution for (a)

At  $60.0 \text{ Hz}$ , the values of the reactances were found in [link](#) to be  $X_L = 1.13 \Omega$  and in [link](#) to be  $X_C = 531 \Omega$ . Entering these and the given  $40.0 \Omega$  for resistance into  $Z = \sqrt{R^2 + (X_L - X_C)^2}$  yields

$$Z = \sqrt{R^2 + (X_L - X_C)^2} \quad (23.3.5)$$

$$= \sqrt{(40.0)^2 + (1.13 \Omega - 531 \Omega)^2} \quad (23.3.6)$$

$$= 531 \Omega \text{ at } 60.0 \text{ Hz}. \quad (23.3.7)$$

Similarly, at 10.0 kHz,  $X_L = 188 \Omega$  and  $X_C = 3.18 \Omega$ , so that

$$Z = \sqrt{(40.0 \Omega)^2 + (188 \Omega - 3.18 \Omega)^2} \quad (23.3.8)$$

$$= 190 \Omega \text{ at } 10.0 \text{ kHz}. \quad (23.3.9)$$

#### Discussion for (a)

In both cases, the result is nearly the same as the largest value, and the impedance is definitely not the sum of the individual values. It is clear that  $X_L$  dominates at high frequency and  $X_C$  dominates at low frequency.

#### Solution for (b)

The current  $I_{rms}$  can be found using the AC version of Ohm's law in Equation  $I_{rms} = V_{rms}/Z$ .

$$I_{rms} = \frac{V_{rms}}{Z} = \frac{120 \text{ V}}{531 \Omega} = 0.226 \text{ A at } 60.0 \text{ Hz}. \quad (23.3.10)$$

Finally, at 10.0 kHz we find

$$I_{rms} = \frac{V_{rms}}{Z} = \frac{120 \text{ V}}{180 \Omega} = 0.633 \text{ A at } 10.0 \text{ Hz}. \quad (23.3.11)$$

#### Discussion for (a)

The current at 60.0 Hz is the same (to three digits) as found for the capacitor alone in [\[link\]](#). The capacitor dominates at low frequency. The current at 10.0 kHz is only slightly different from that found for the inductor alone in [\[link\]](#). The inductor dominates at high frequency.

## Resonance in RLC Series AC Circuits

How does an RLC circuit behave as a function of the frequency of the driving voltage source? Combining Ohm's law,  $I_{rms} = V_{rms}/Z$ , and the expression for impedance  $Z$  from  $Z = \sqrt{R^2 + (X_L - X_C)^2}$  gives

$$I_{rms} = \frac{V_{rms}}{\sqrt{R^2 + (X_L - X_C)^2}}. \quad (23.3.12)$$

The reactances vary with frequency, with  $X_L$  large at high frequencies and  $X_C$  large at low frequencies, as we have seen in three previous examples. At some intermediate frequency  $f_0$ , the reactances will be equal and cancel, giving  $Z = R$ —this is a minimum value for impedance, and a maximum value for  $I_{rms}$  results. We can get an expression for  $f_0$  by taking

$$X_L = X_C. \quad (23.3.13)$$

Substituting the definitions of  $X_L$  and  $X_C$ ,

$$2\pi f_0 L = \frac{1}{2\pi f_0 C}. \quad (23.3.14)$$

Solving this expression for  $f_0$  yields

$$f_0 = \frac{1}{2\pi\sqrt{LC}}, \quad (23.3.15)$$

where  $F_0$  is the resonant frequency of an RLC series circuit. This is also the *natural frequency* at which the circuit would oscillate if not driven by the voltage source. At  $f_0$ , the effects of the inductor and capacitor cancel, so that  $Z = R$ , and  $I_{rms}$  is a maximum.

Resonance in AC circuits is analogous to mechanical resonance, where resonance is defined to be a forced oscillation—in this case, forced by the voltage source—at the natural frequency of the system. The receiver in a radio is an RLC circuit that oscillates best at its  $f_0$ . A variable capacitor is often used to adjust  $f_0$  to receive a desired frequency and to reject others. [Figure](#) is a graph of current as a function of frequency, illustrating a resonant peak in  $I_{rms}$  at  $f_0$ . The two curves are for two different circuits, which differ only in the amount of resistance in them. The peak is lower and broader for the higher-resistance circuit. Thus the higher-resistance circuit does not resonate as strongly and would not be as selective in a radio receiver, for example.

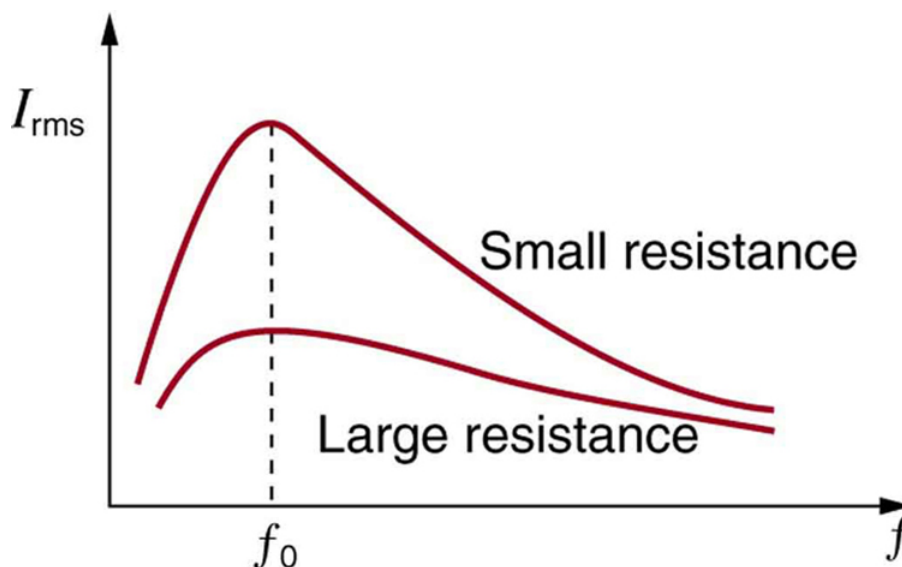


Figure 23.3.3: A graph of current versus frequency for two RLC series circuits differing only in the amount of resistance. Both have a resonance at  $f_0$  but that for the higher resistance is lower and broader. The driving AC voltage source has a fixed amplitude  $V_0$ .

### Example 23.3.2: Calculating Resonant Frequency and Current

For the same RLC series circuit having a  $40.0\ \Omega$  resistor, a  $3.00\ \text{mH}$  inductor, and a  $5.00\ \mu\text{F}$  capacitor: (a) Find the resonant frequency. (b) Calculate  $I_{rms}$  at resonance if  $V_{rms}$  is  $120\ \text{V}$ .

#### Strategy

The resonant frequency is found by using the expression in  $f_0 = \frac{1}{2\pi\sqrt{LC}}$ .

The current at that frequency is the same as if the resistor alone were in the circuit.

#### Solution for (a)

Entering the given values for  $L$  and  $C$  into the expression given for  $f_0$  in  $f_0 = \frac{1}{2\pi\sqrt{LC}}$  yields

$$f_0 = \frac{1}{2\pi\sqrt{LC}} \quad (23.3.16)$$

$$= \frac{1}{2\pi\sqrt{(3.00 \times 10^{-3}\ \text{H})(5.00 \times 10^{-6}\ \text{F})}} = 1.30\ \text{kHz}. \quad (23.3.17)$$

#### Discussion for (a)

We see that the resonant frequency is between  $60.0\ \text{Hz}$  and  $10.0\ \text{kHz}$ , the two frequencies chosen in earlier examples. This was to be expected, since the capacitor dominated at the low frequency and the inductor dominated at the high frequency. Their effects are the same at this intermediate frequency.

#### Solution for (b)

The current is given by Ohm's law. At resonance, the two reactances are equal and cancel, so that the impedance equals the resistance alone. Thus,

$$I_{rms} = \frac{V_{rms}}{Z} = \frac{120\ \text{V}}{40.0\ \Omega} = 3.00\ \text{A}. \quad (23.3.18)$$

#### Discussion for (b)

At resonance, the current is greater than at the higher and lower frequencies considered for the same circuit in the preceding example.

## Power in RLC Series AC Circuits

If current varies with frequency in an  $RLC$  circuit, then the power delivered to it also varies with frequency. But the average power is not simply current times voltage, as it is in purely resistive circuits. As was seen in [Figure](#), voltage and current are out of phase in an  $RLC$  circuit. There is a **phase angle**  $\phi$  between the source voltage  $V$  and the current  $I$ , which can be found from

$$\cos \phi = \frac{R}{Z}. \quad (23.3.19)$$

For example, at the resonant frequency or in a purely resistive circuit  $Z = R$ , so that  $\cos \phi = 1$ . This implies that  $\phi = 0^\circ$  and that voltage and current are in phase, as expected for resistors. At other frequencies, average power is less than at resonance. This is both because voltage and current are out of phase and because  $I_{rms}$  is lower. The fact that source voltage and current are out of phase affects the power delivered to the circuit. It can be shown that the *average power* is

$$P_{ave} = I_{rms} V_{rms} \cos \phi, \quad (23.3.20)$$

thus  $\cos \phi$  is called the power factor, which can range from 0 to 1. Power factors near 1 are desirable when designing an efficient motor, for example. At the resonant frequency,  $\cos \phi = 1$ .

### Example 23.3.3 : Calculating the Power Factor and Power

For the same  $RLC$  series circuit having a  $40.0 \Omega$  resistor, a  $3.00 \text{ mH}$  inductor, a  $5.00 \mu\text{F}$  capacitor, and a voltage source with a  $V_{rms}$  of  $120 \text{ V}$ : (a) Calculate the power factor and phase angle for  $f = 60.0 \text{ Hz}$ .

(b) What is the average power at  $50.0 \text{ Hz}$ ? (c) Find the average power at the circuit's resonant frequency.

#### Strategy and Solution for (a)

The power factor at  $60.0 \text{ Hz}$  is found from

$$\cos \phi = \frac{R}{Z}. \quad (23.3.21)$$

We know  $Z = 531 \Omega$  from [Example](#), so that

$$\cos \phi = \frac{40.0 \Omega}{531 \Omega} = 0.0753 \text{ at } 60.0 \text{ Hz}. \quad (23.3.22)$$

This small value indicates the voltage and current are significantly out of phase. In fact, the phase angle is

$$\phi = \cos^{-1} 0.0753 = 85.7^\circ \text{ at } 60.0 \text{ Hz}. \quad (23.3.23)$$

#### Discussion for (a)

The phase angle is close to  $90^\circ$ , consistent with the fact that the capacitor dominates the circuit at this low frequency (a pure  $RC$  circuit has its voltage and current  $90^\circ$  out of phase).

#### Strategy and Solution for (b)

The average power at  $60.0 \text{ Hz}$  is

$$P_{ave} = I_{rms} V_{rms} \cos \phi. \quad (23.3.24)$$

$I_{rms}$  was found to be  $0.226 \text{ A}$  in [Example](#). Entering the known values gives

$$P_{ave} = (0.226 \text{ A})(120 \text{ V})(0.0753) = 2.04 \text{ W at } 60.0 \text{ Hz}. \quad (23.3.25)$$

#### Strategy and Solution for (c)

At the resonant frequency, we know  $\cos \phi = 1$ , and  $I_{rms}$  was found to be  $6.00 \text{ A}$  in [Example](#). Thus,

$$P_{ave} = (3.00 \text{ A})(120 \text{ V})(1) = 360 \text{ W}$$

at resonance ( $1.30 \text{ kHz}$ )

#### Discussion

Both the current and the power factor are greater at resonance, producing significantly greater power than at higher and lower frequencies.

Power delivered to an  $RLC$  series AC circuit is dissipated by the resistance alone. The inductor and capacitor have energy input and output but do not dissipate it out of the circuit. Rather they transfer energy back and forth to one another, with the resistor dissipating exactly what the voltage source puts into the circuit. This assumes no significant electromagnetic radiation from the inductor and capacitor, such as radio waves. Such radiation can happen and may even be desired, as we will see in the next chapter on electromagnetic radiation, but it can also be suppressed as is the case in this chapter. The circuit is analogous to the wheel of a car driven over a corrugated road as shown in Figure. The regularly spaced bumps in the road are analogous to the voltage source, driving the wheel up and down. The shock absorber is analogous to the resistance damping and limiting the amplitude of the oscillation. Energy within the system goes back and forth between kinetic (analogous to maximum current, and energy stored in an inductor) and potential energy stored in the car spring (analogous to no current, and energy stored in the electric field of a capacitor). The amplitude of the wheels' motion is a maximum if the bumps in the road are hit at the resonant frequency.

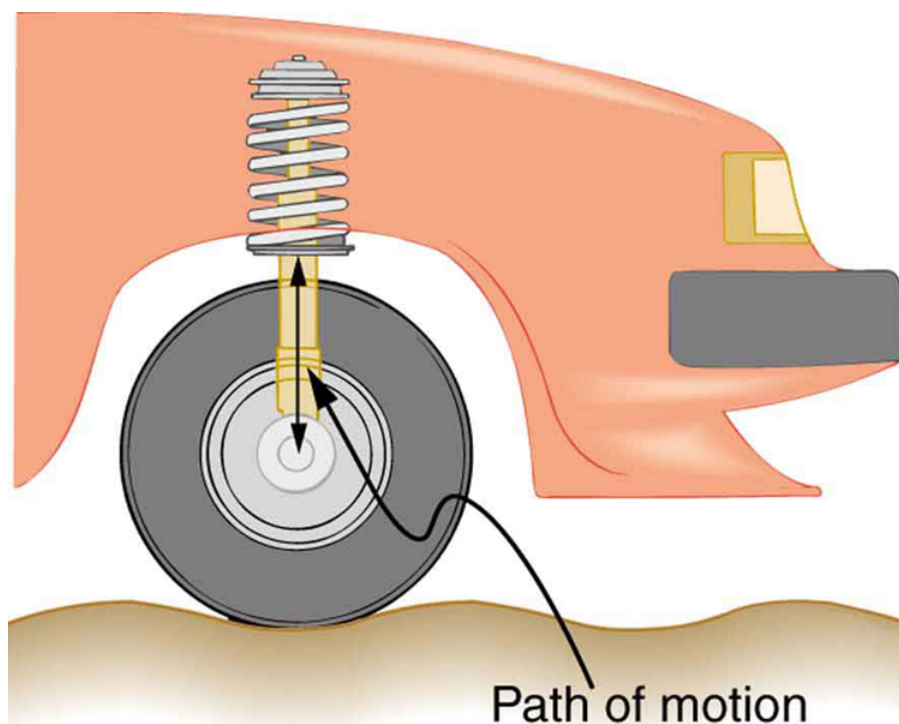


Figure 23.3.4: The forced but damped motion of the wheel on the car spring is analogous to an  $RLC$  series AC circuit. The shock absorber damps the motion and dissipates energy, analogous to the resistance in an  $RLC$  circuit. The mass and spring determine the resonant frequency.

A pure  $LC$  circuit with negligible resistance oscillates at  $f_0$ , the same resonant frequency as an  $RLC$  circuit. It can serve as a frequency standard or clock circuit—for example, in a digital wristwatch. With a very small resistance, only a very small energy input is necessary to maintain the oscillations. The circuit is analogous to a car with no shock absorbers. Once it starts oscillating, it continues at its natural frequency for some time. Figure shows the analogy between an  $LC$  circuit and a mass on a spring.

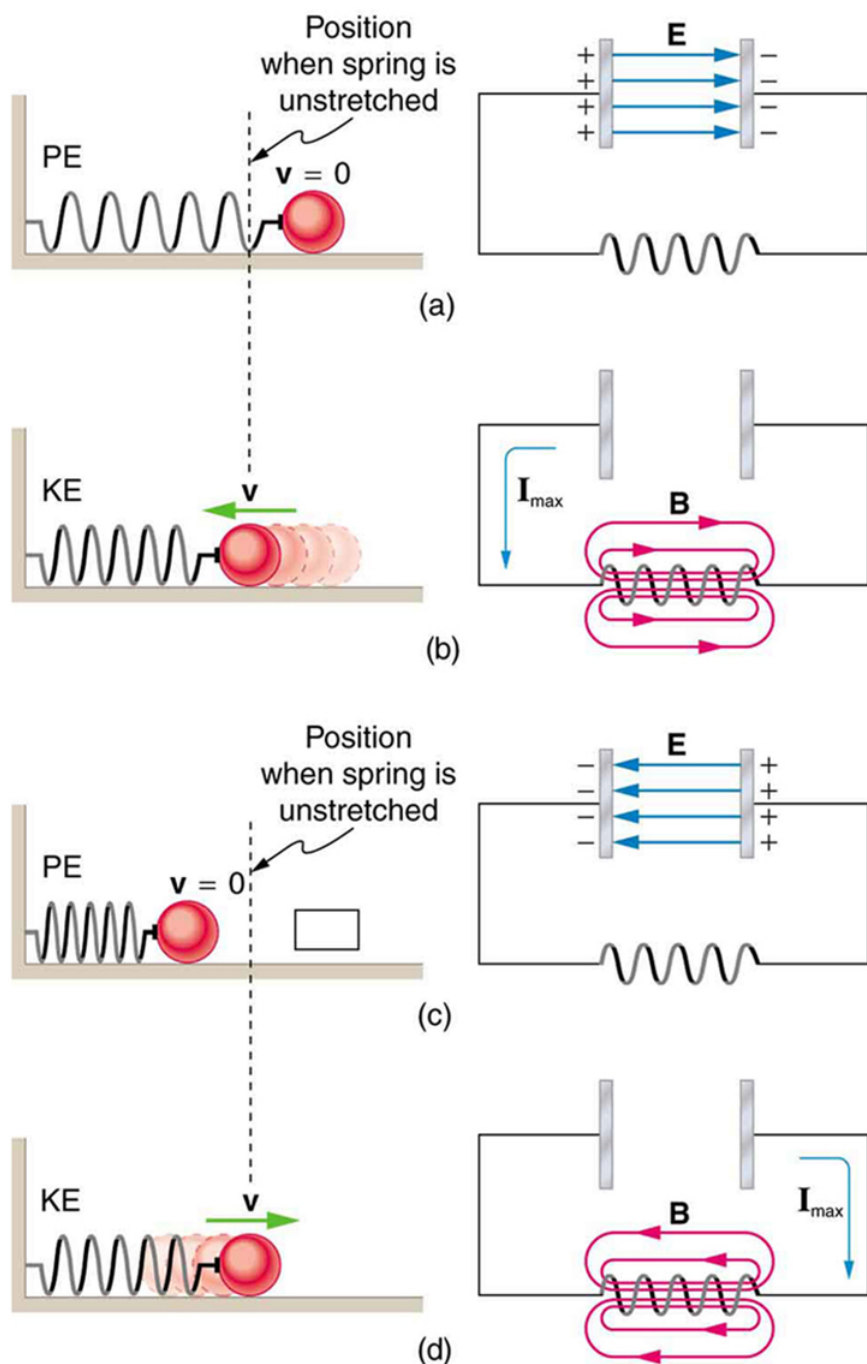


Figure 23.3.5: An LC circuit is analogous to a mass oscillating on a spring with no friction and no driving force. Energy moves back and forth between the inductor and capacitor, just as it moves from kinetic to potential in the mass-spring system.

PHET EXPLORATIONS: CIRCUIT CONSTRUCTION KIT (AC + DC), VIRTUAL LAB

Build circuits with capacitors, inductors, resistors and AC or DC voltage sources, and inspect them using lab instruments such as voltmeters and ammeters.



# PhET Interactive Simulation

Figure 23.3.6: [Circuit Construction Kit \(AC+DC\), Virtual Lab](#)

## Summary

- The AC analogy to resistance is impedance  $Z$ , the combined effect of resistors, inductors, and capacitors, defined by the AC version of Ohm's law:

$$I_0 = \frac{V_0}{Z} \text{ or } I_{rms} = \frac{V_{rms}}{Z}, \quad (23.3.26)$$

where  $I_0$  is the peak current and  $V_0$  is the peak source voltage.

- Impedance has units of ohms and is given by  $Z = \sqrt{R^2 + (X_L - X_C)^2}$ .
- The resonant frequency  $f_0$ , at which  $X_L = X_C$ , is

$$f_0 = \frac{1}{2\pi\sqrt{LC}}. \quad (23.3.27)$$

- In an AC circuit, there is a phase angle  $\phi$  between source voltage  $V$  and the current  $I$  which can be found from

$$\cos \phi = \frac{R}{Z}, \quad (23.3.28)$$

- $\phi = 0^\circ$  for a purely resistive circuit or an  $RLC$  circuit at resonance.
- The average power delivered to an  $RLC$  circuit is affected by the phase angle and is given by

$$P_{ave} = I_{rms} V_{rms} \cos \phi, \quad (23.3.29)$$

$\cos \phi$  is called the power factor, which ranges from 0 to 1.

## Glossary

### impedance

the AC analogue to resistance in a DC circuit; it is the combined effect of resistance, inductive reactance, and capacitive reactance in the form  $Z = \sqrt{R^2 + (X_L - X_C)^2}$

### resonant frequency

the frequency at which the impedance in a circuit is at a minimum, and also the frequency at which the circuit would oscillate if not driven by a voltage source; calculated by  $f_0 = \frac{1}{2\pi\sqrt{LC}}$

### phase angle

denoted by  $\phi$ , the amount by which the voltage and current are out of phase with each other in a circuit

### power factor

the amount by which the power delivered in the circuit is less than the theoretical maximum of the circuit due to voltage and current being out of phase; calculated by  $(\cos \phi)$

This page titled [23.3: RLC Series AC Circuits](#) is shared under a [CC BY 4.0](#) license and was authored, remixed, and/or curated by [OpenStax](#) via [source content](#) that was edited to the style and standards of the LibreTexts platform.