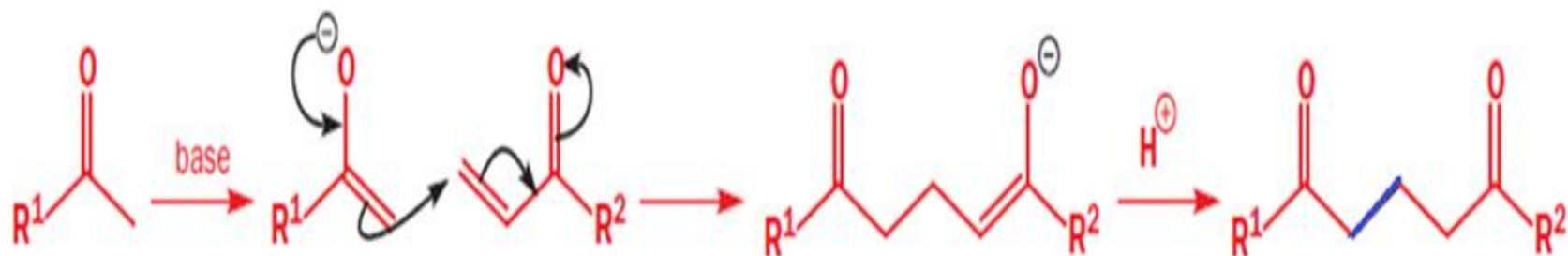


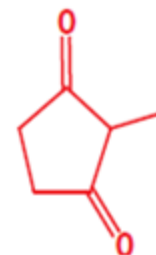
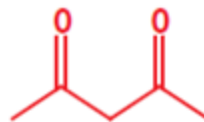
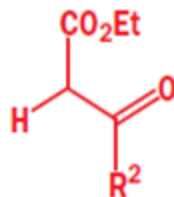
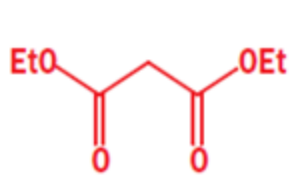
ADIÇÃO CONJUGADA DE ENOLATOS

FORMAÇÃO DE COMPOSTOS DI-CARBONÍLICOS

ADIÇÃO CONJUGADA :

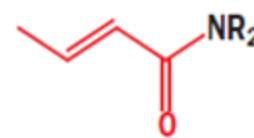
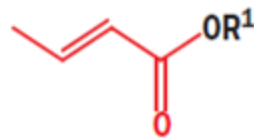
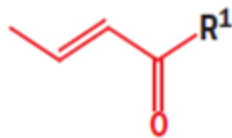
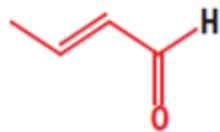


NUCLEÓFILOS :

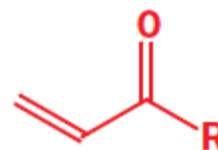
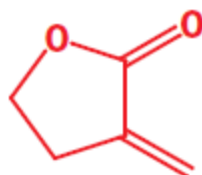
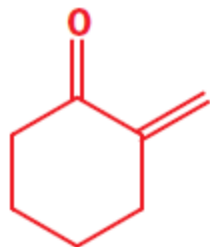


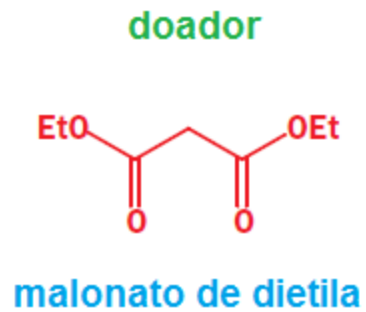
CETONAS

ACEPTORES :

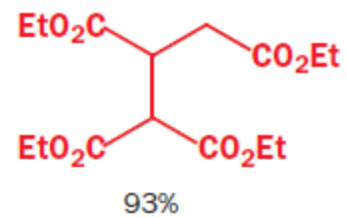
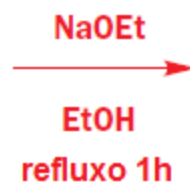
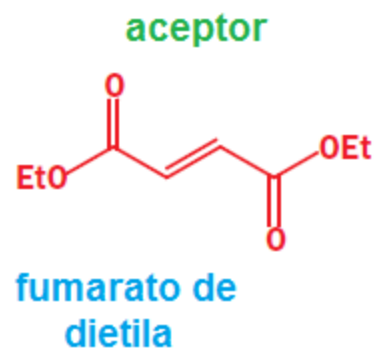


OUTROS ACEPTORES DE MICHAEL

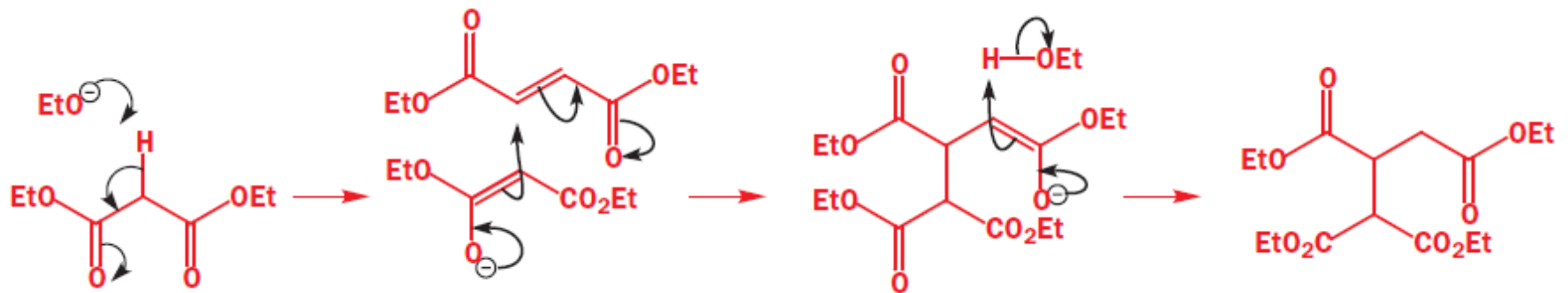




+



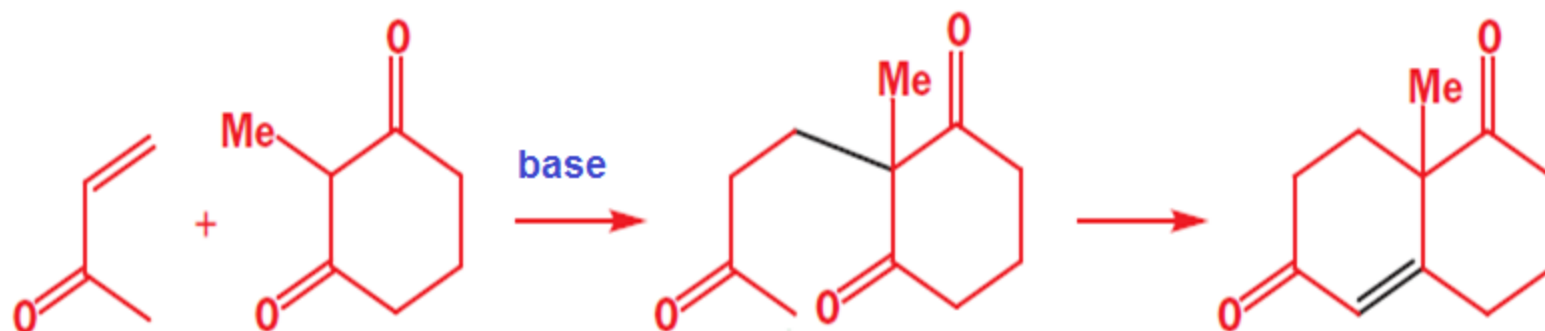
mecanismo :



ADIÇÃO DE MICHAEL

UTILIZA HIDRÓXIDO OU ETÓXIDO EM QUANTIDADE CATALÍTICA !!!

A ANELAÇÃO DE ROBINSON



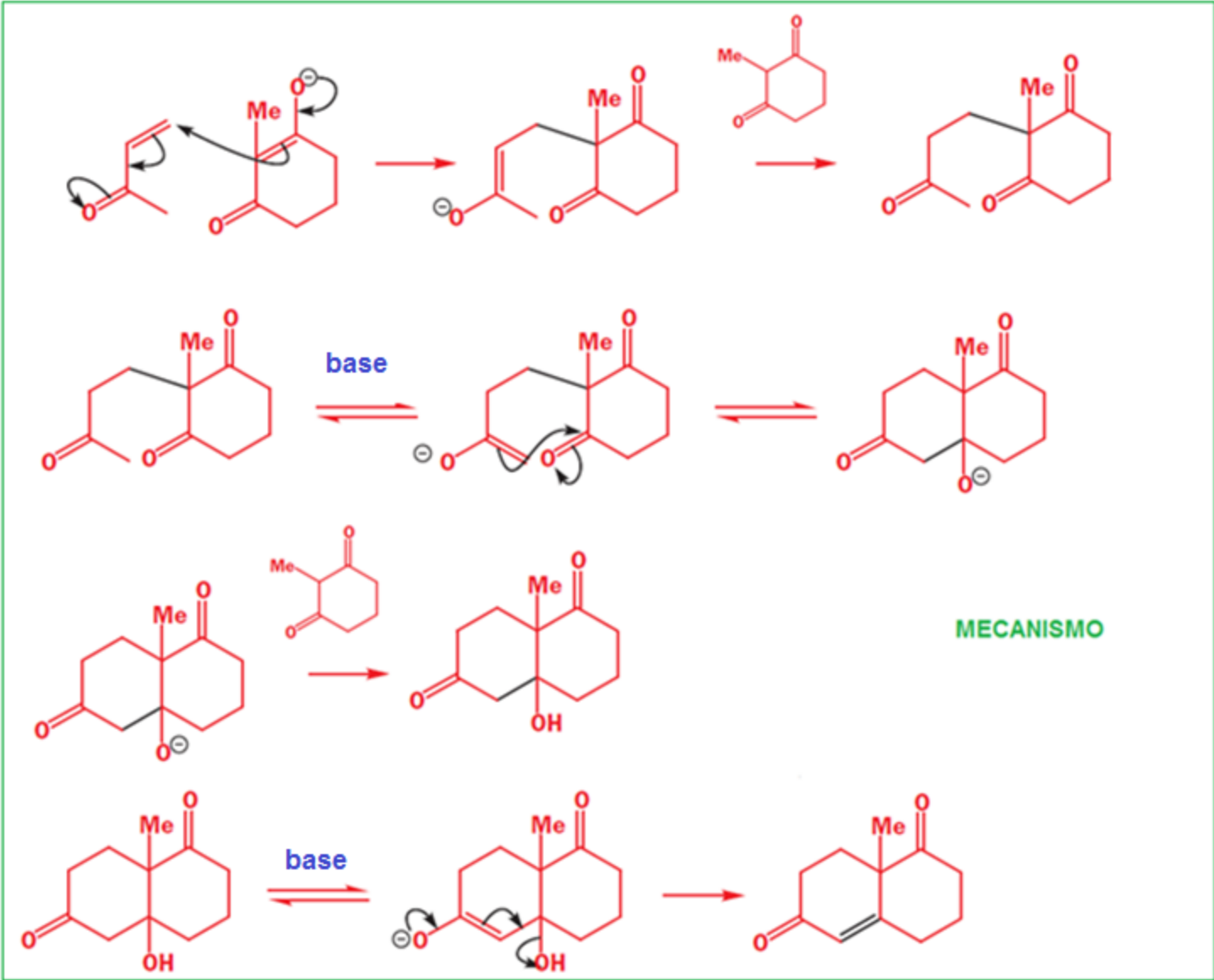
FORMAÇÃO DE UM COMPOSTO CÍCLICO UTILIZANDO:

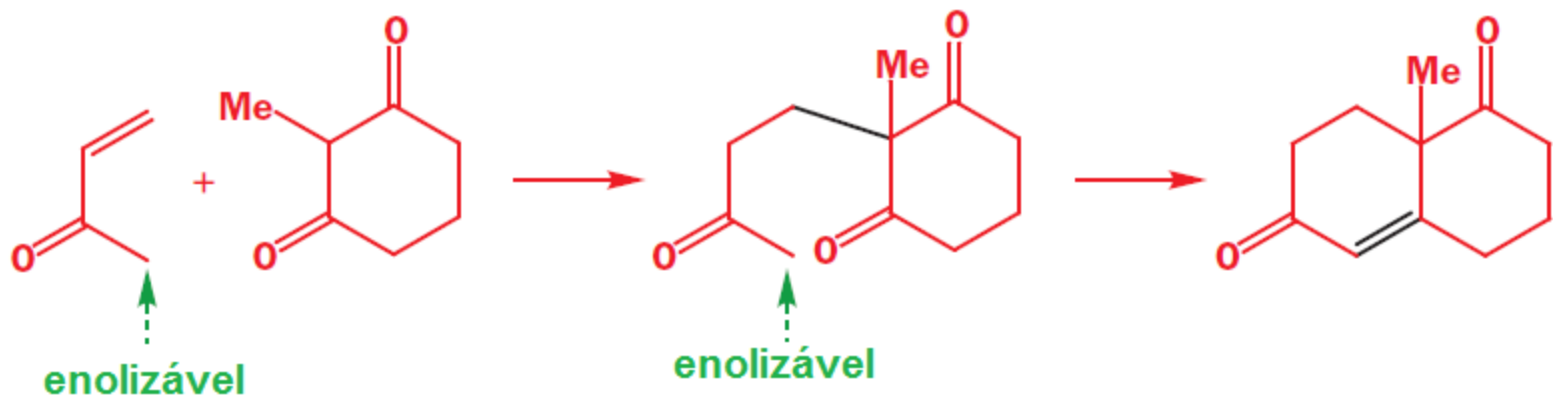


UM COMPOSTO CARBONÍLICO ENOLIZÁVEL

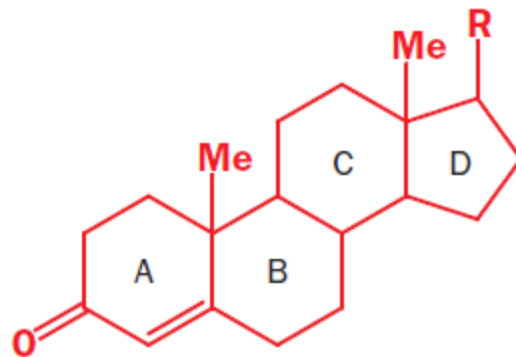


UM COMPOSTO CARBONÍLICO α,β - INSATURADO



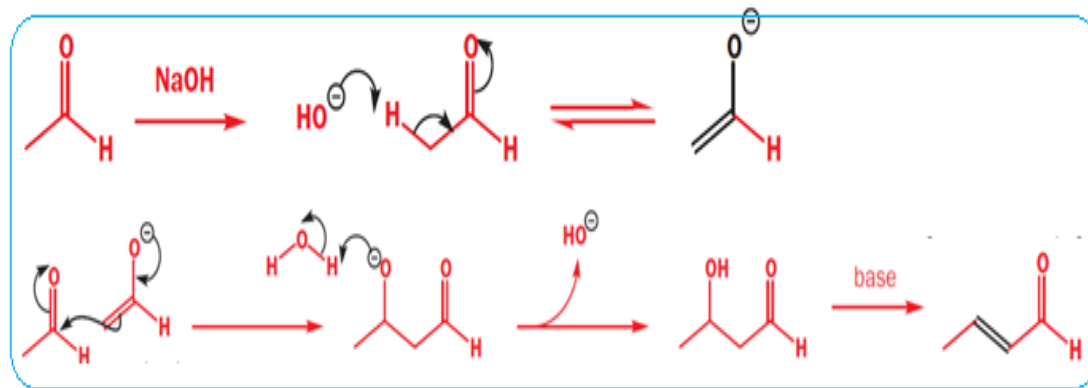


COMO POR EXEMPLO NA SÍNTESE DOS ANÉIS A e B DE ESTERÓIDES

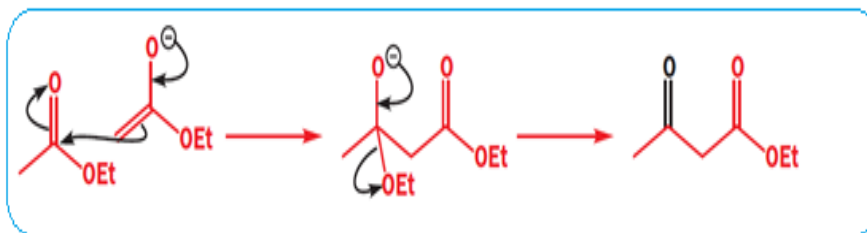


REAÇÕES DO CARBONO ALFA-CARBONÍLICO

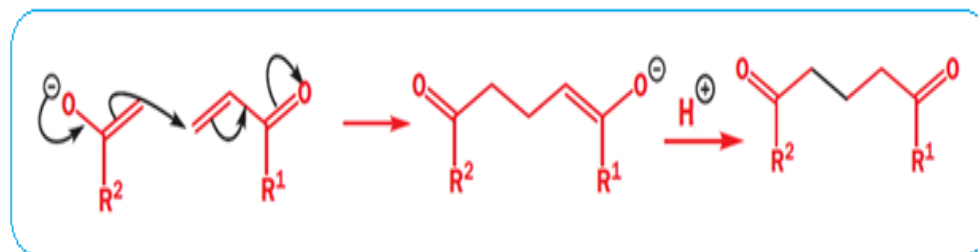
CONDENSAÇÃO ALDÓLICA



ACILAÇÃO DO CARBONO



ADIÇÃO CONJUGADA



ALQUILAÇÃO DE ENOLATOS

