

Grupo 3

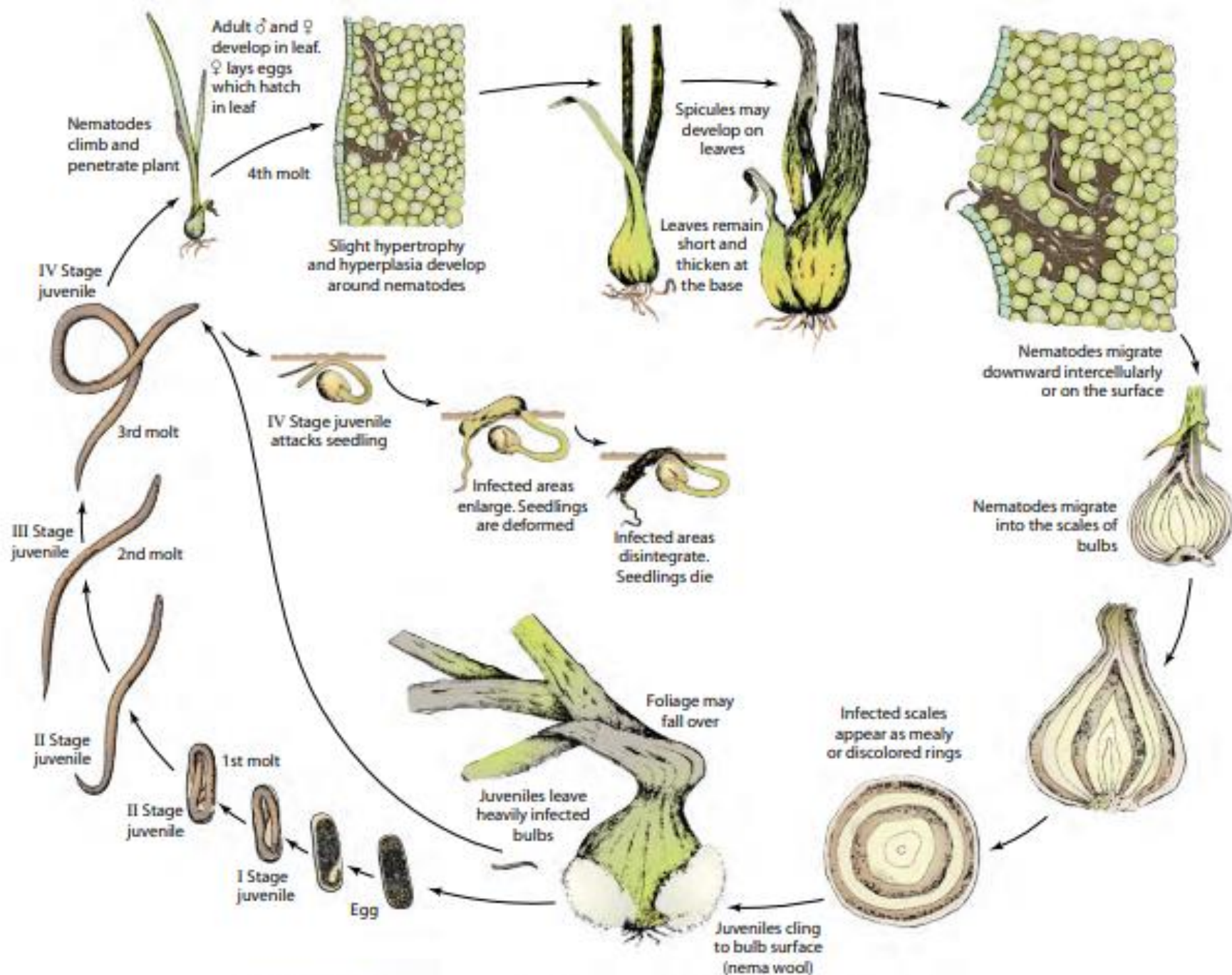


FIGURE 15-27 Disease cycle of the stem and bulb nematode *Ditylenchus dipsaci*.

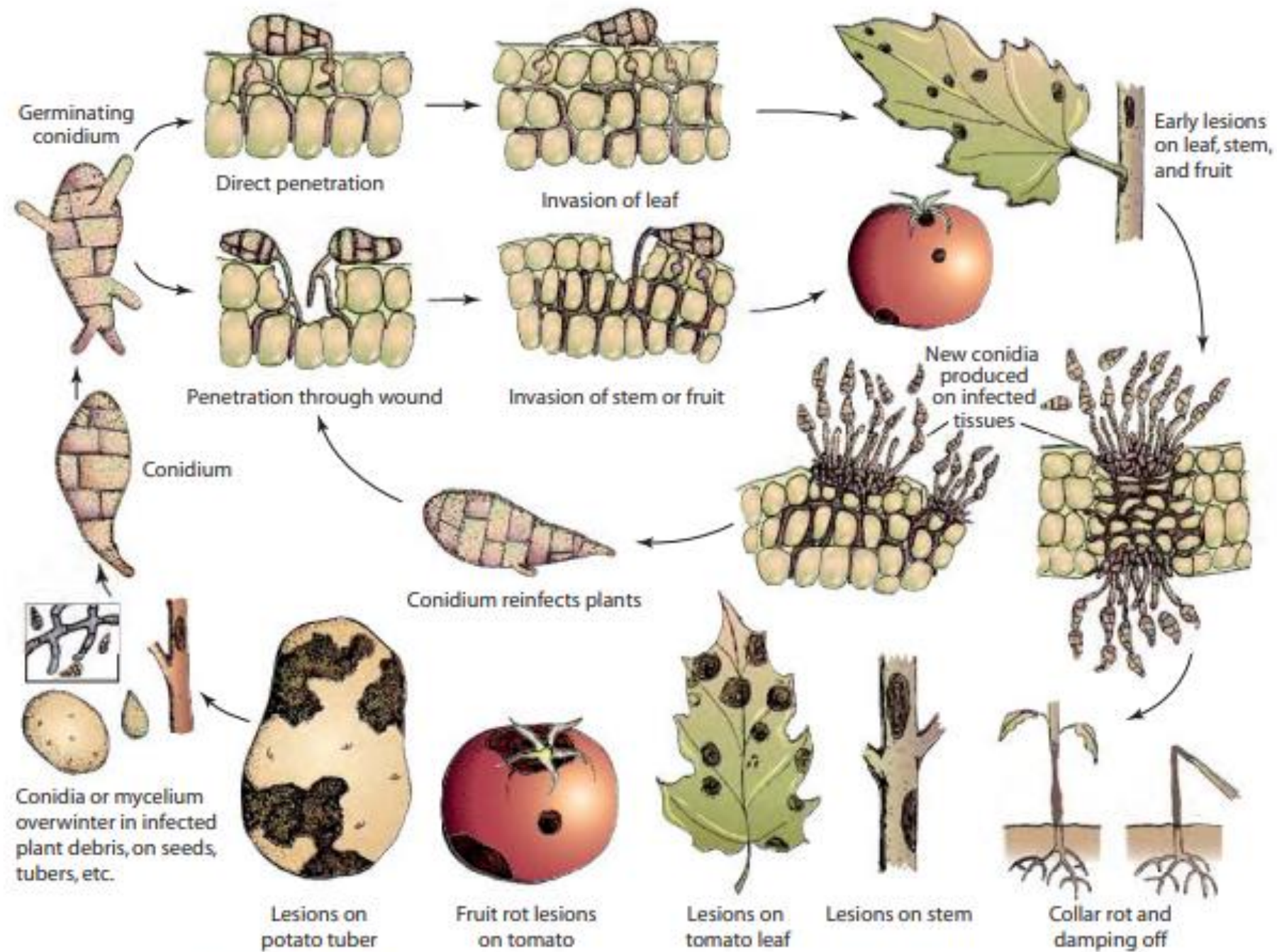


FIGURE 11-53 Development and symptoms of diseases caused by *Alternaria*.

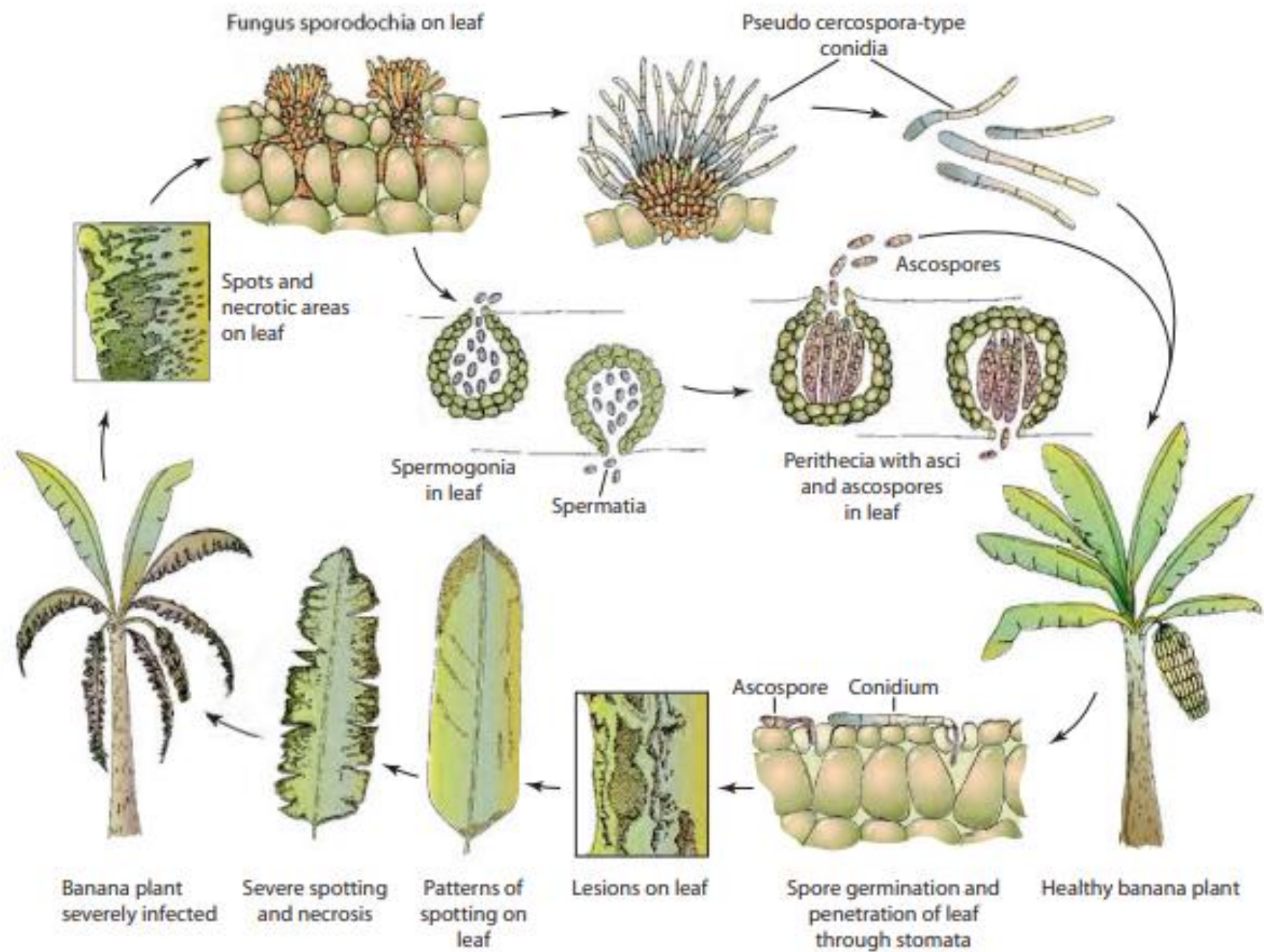
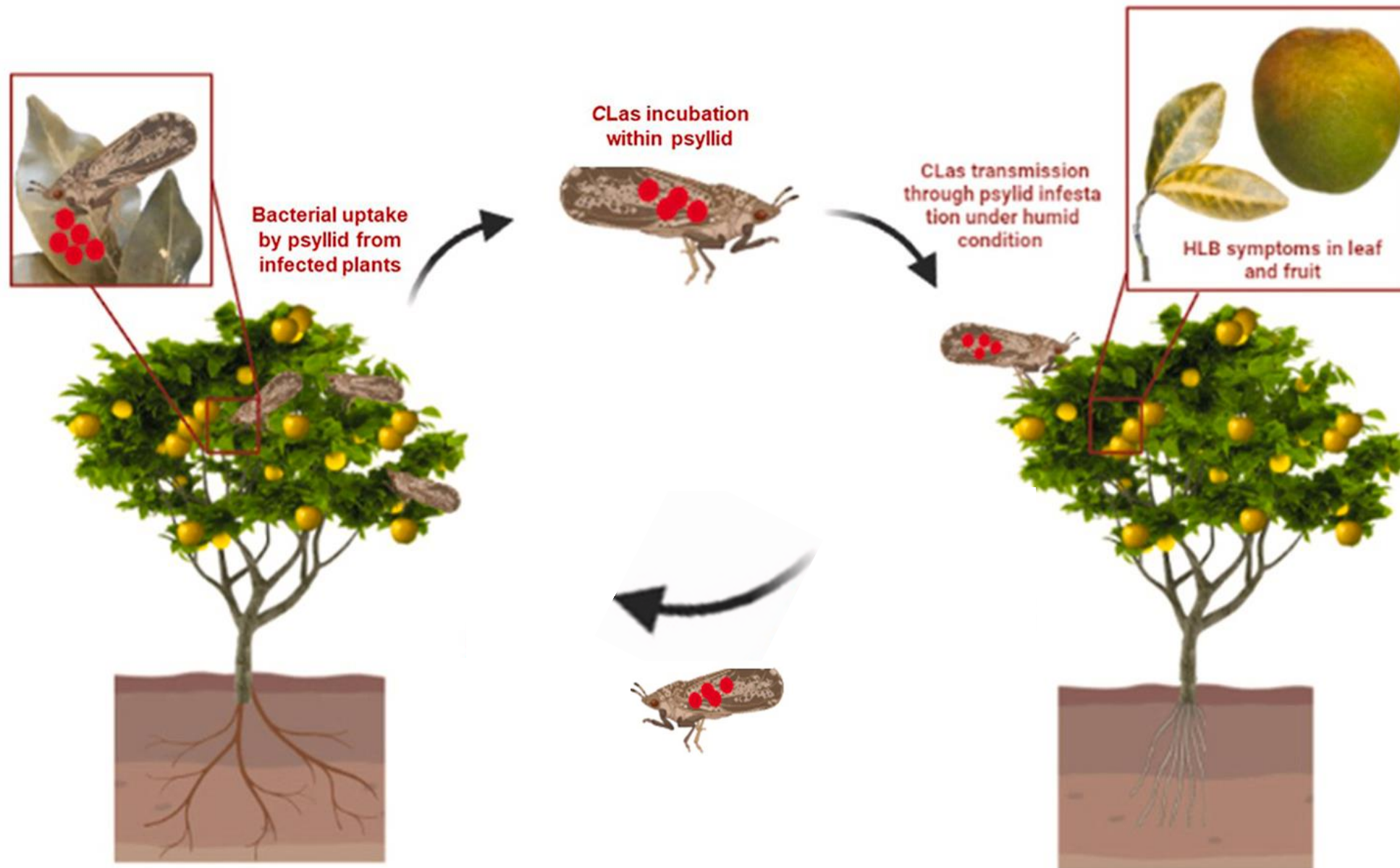


FIGURE 11-57 Development of Sigatoka disease of banana caused by *Mycosphaerella musicola* or *M. fijiensis*.



Ciclo da doença em citros causada por *Candidatus Liberibacter* spp.