

Equideocultura

Roberta Ariboni Brandi

Quem sou eu?



Classificação

Reino: animalia;

Sub-reino: metazoa;

Filo: chordata

Sub-filo: vertebrata

Classe: Mammalia

Sub-classe: Eutheria

Ordem: Perissodactyforme

Sub-ordem: Hippomorpha

Gênero: equus

Subgêneros: caballus, asinus, Hippotigris

Espécies: *Equus caballus*

Equus asinus (*E.a.asinus*, *E.a. hemionus*,

E.a. onager, *E.a. hemippus*)

Eqqus Hippotigres (*E.h. zebra*, *E.h. burchelli*,

E.h. chapmanni)



Manejo de espécies



Horsemanship

Entendimento entre o homem e o cavalo, de forma que o homem, a partir do entendimento do cavalo, adeque suas atitudes para que a convivência seja o mais harmônica possível.

O horsemanship é uma filosofia de trabalho, onde adentra-se ao mundo do cavalo, descobrindo como ele se comunica, se organiza, sua hierarquia e como responde as atitudes do homem.



EVOLUTION OF THE HORSE



Por que o cavalo?



“sinta o cavalo”

Respeito

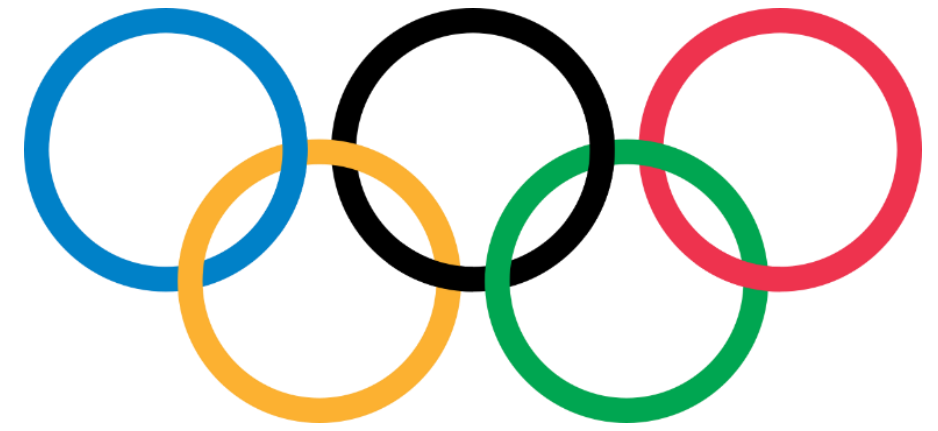
A close-up photograph of a horse's face, focusing on its eyes and nose. The horse is dark-colored, and the background is a soft, out-of-focus field of tall grasses in warm, golden-brown tones, suggesting a sunset or sunrise. The text is overlaid on the right side of the image.

The riders
hands are
not to
control
the horse
but to feel
the horses
thoughts.



Olimpíada pan-americanos





RIO 2007

XV jogos pan-americanos
XV juegos panamericanos
XV pan american games

Formas de atuação

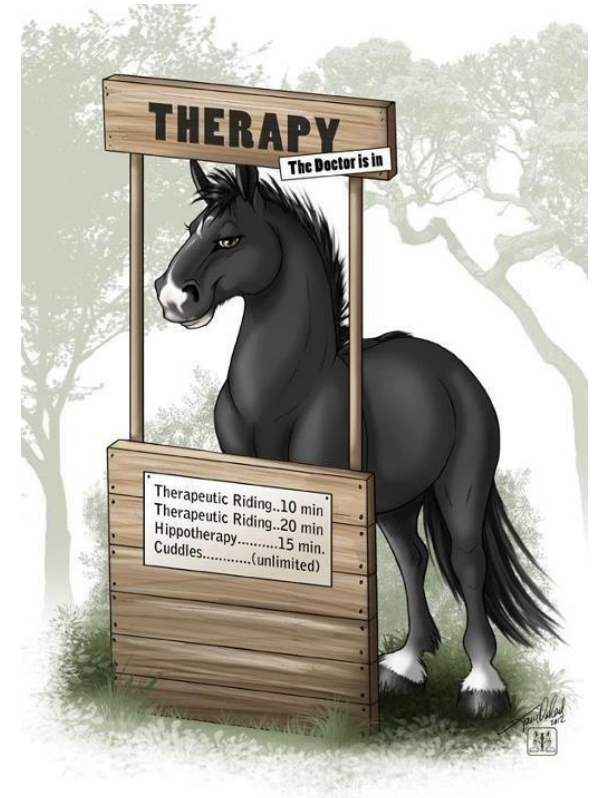
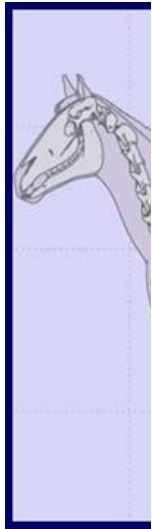


Horses by Hawk
www.cafePress.com/profile/34678981



Therapeutic Riding...10 min
Therapeutic Riding...20 min
Hippotherapy.....15 min.
Cuddles.....(unlimited)

Cavalo Terapeuta



Benefits

Psychological

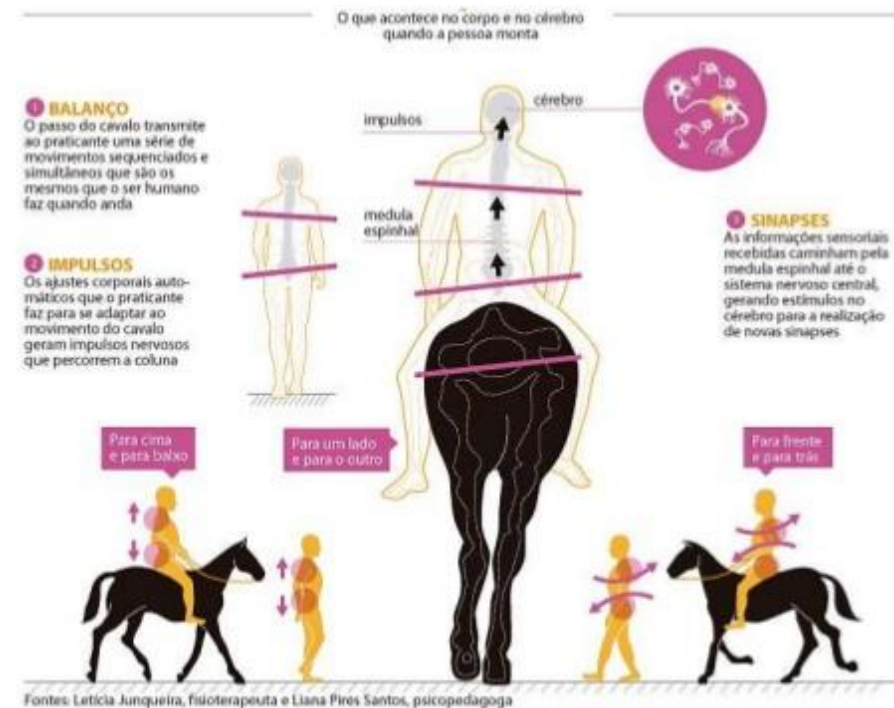
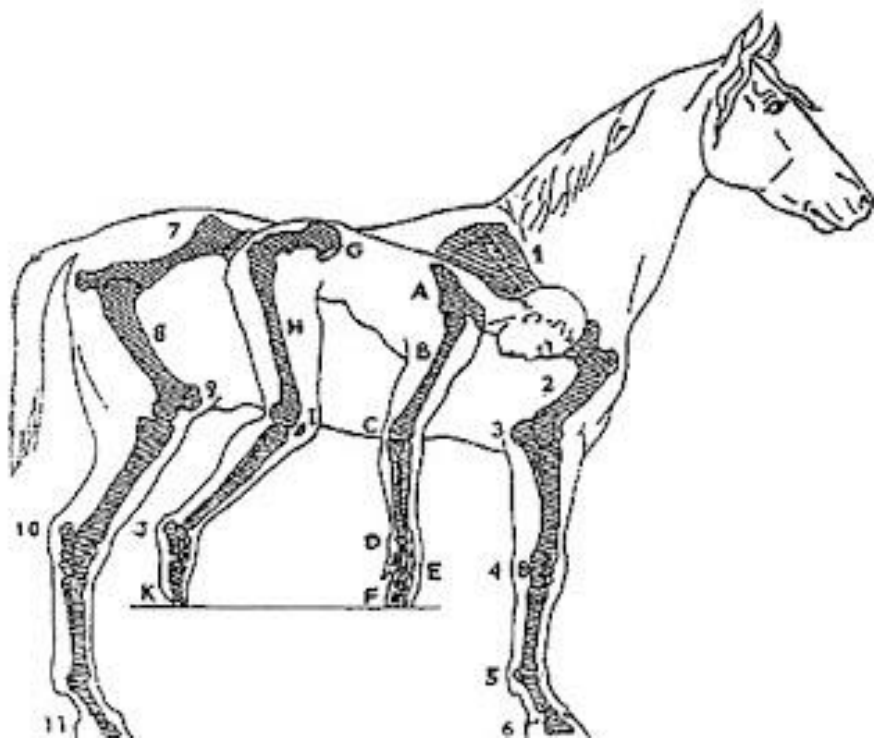
Social

Physical

Mental



lifeprinciples.co.za



O QUE PASSA NA CABEÇA DE UM CAVALO?

- ✓ A natureza do cavalo;
 - ✓ Gregário;
 - ✓ Predado;
 - ✓ Herbívoro;
 - ✓ Livre- poder de decisão;
- ✓ A organização;
- ✓ As emoções;
- ✓ A linguagem corporal;



Bem-estar



The basic needs of a horse:

The 6 F's according to Fed up Fred



Forage



Freedom



Friends



SaFety



ComFort



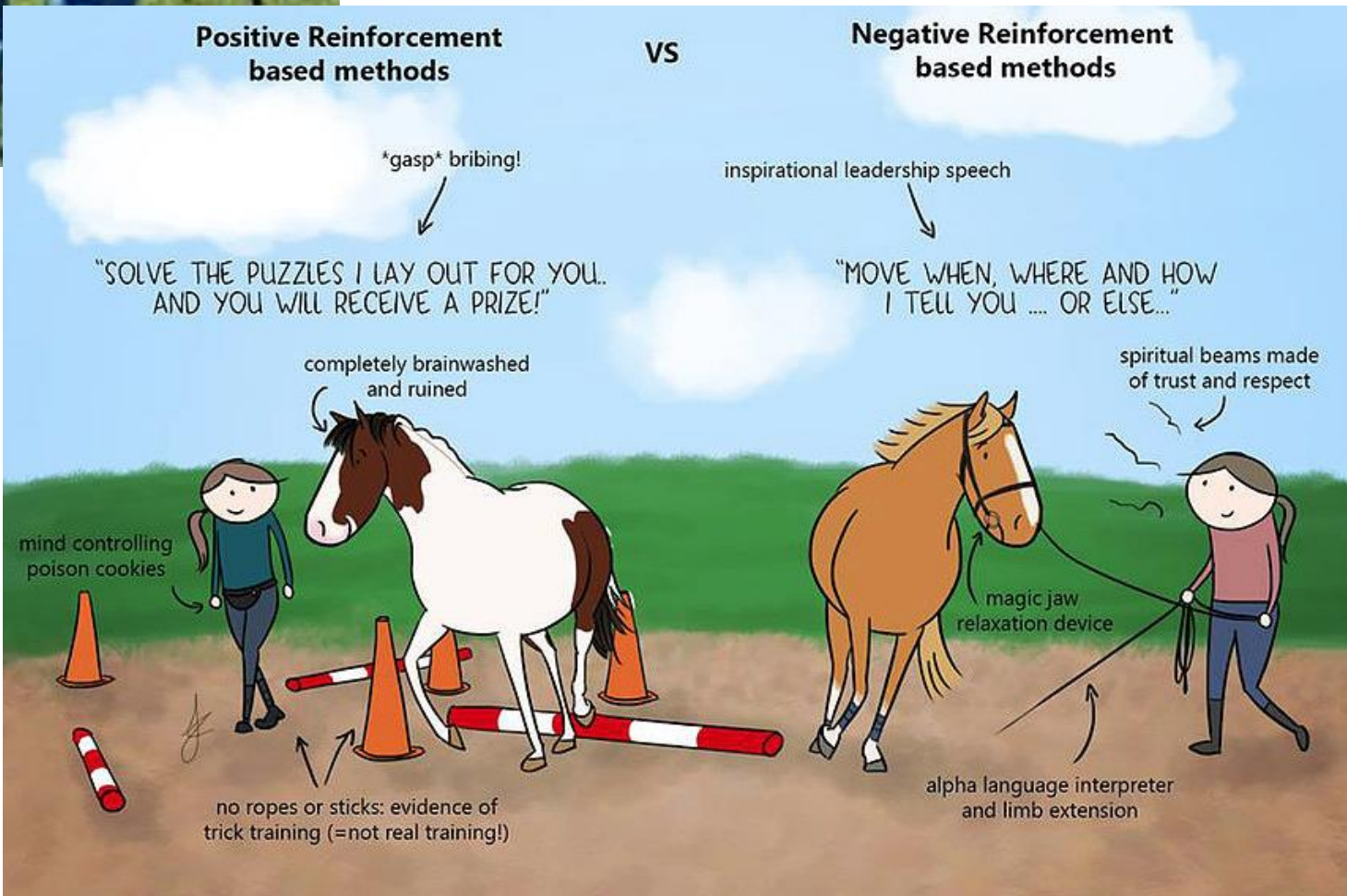
Fun

Instalações





Doma



Animais atletas



Julgamento e exterior



Melhoramento genético!

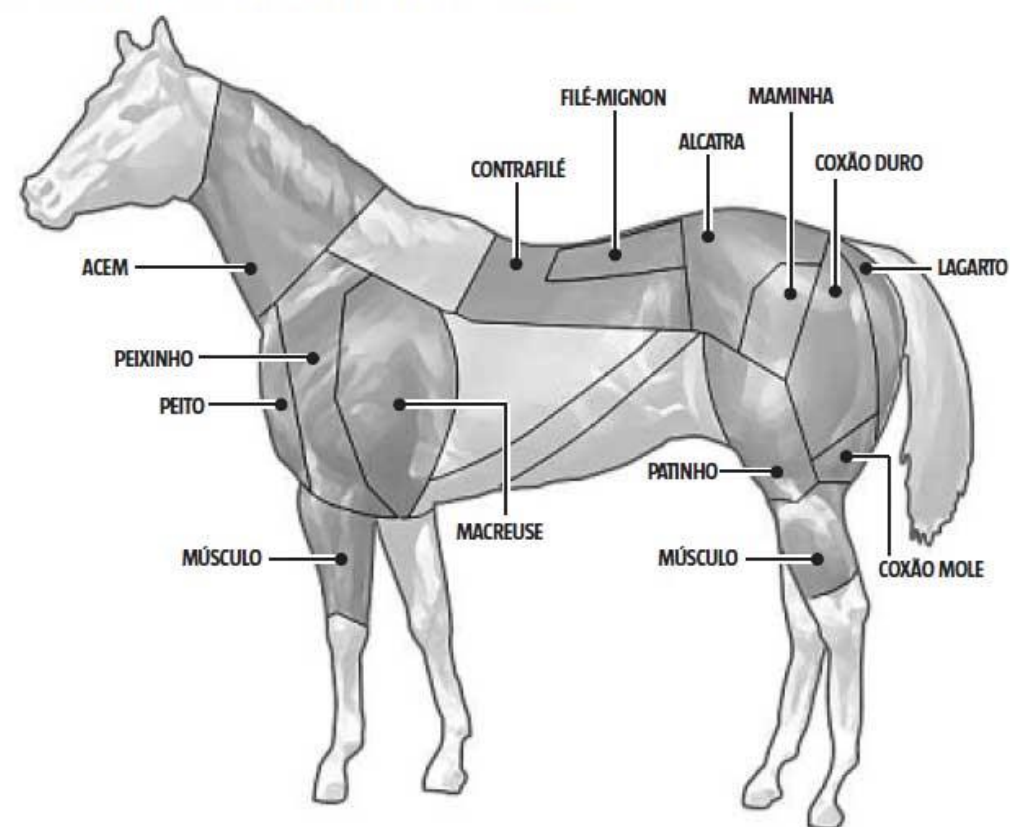


Carne de cavalo



■ PARECE, MAS NÃO É

Cortes de equinos são muito semelhantes aos de bovinos. Confira



Produção de carne



Carne	Água (%)	Proteína (%)	Lipídios (%)	Minerais (%)	Calorias (un/100g)
Equina	71,0	22,6	5,5	0,9	136,4
Bovina	68,3	20,0	10,7	11,1	181,5
Vitela	68,0	20,0	11,0	1,0	184,3
Suína	65,1	19,0	15,0	0,9	217,4
Cordeiro	72,0	21,0	6,1	0,9	142,8
Ovelha	64,8	17,0	17,2	1,0	229,6

Fonte: Stanciu (2015)

Leite de égua/ Jumenta



Tabela 1 – Composição do leite de alguns mamíferos

Espécie	Matéria Seca (g/L)	Proteína (g/L)	Gordura (g/L)	Lactose (g/L)	Cinzas (g/L)	Energia (kJ/L)
Humana	107-129	9-19	21-40	63-70	2-3	2843
Equina	93-116	14-32	3-42	56-72	3-5	1636-2050
Asinina	88-117	14-20	3-18	58-74	3-5	1607-1803
Bovina	118-130	30-39	33-54	44-56	7-8	2709-2843
Ovina	181-200	45-70	50-90	41-59	8-10	4038-4439
Caprina	119-163	30-52	30-72	32-50	7-9	2802-2894
Bubalina	157-172	27-47	53-90	32-49	8-9	4244-4779
Camelídea	119-150	24-42	20-60	35-51	6,9-9	2410-3286

Fonte: Adaptado de Clayes et al. (2014).

Rangel et al., 2015



18 a 30 €/litro.



21,85 €



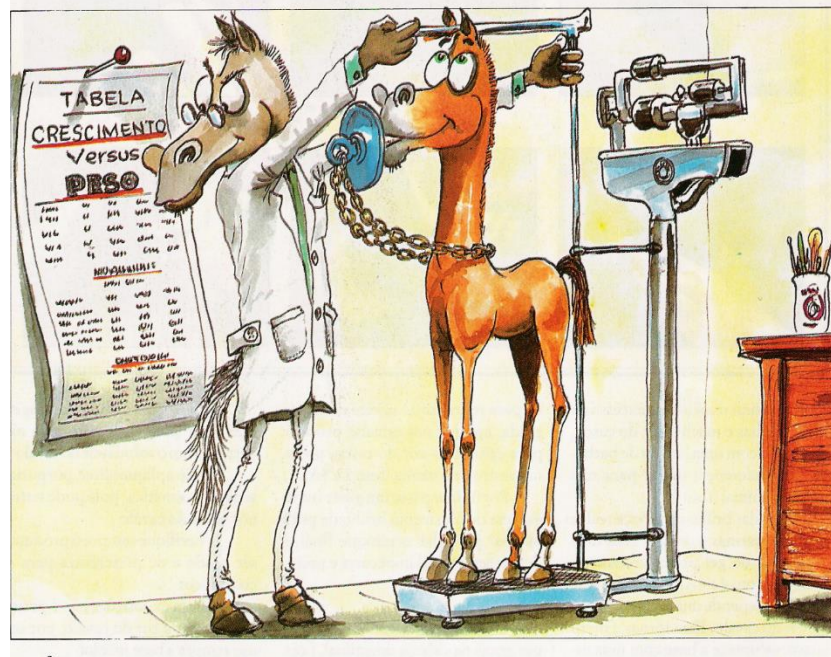
39,50 €



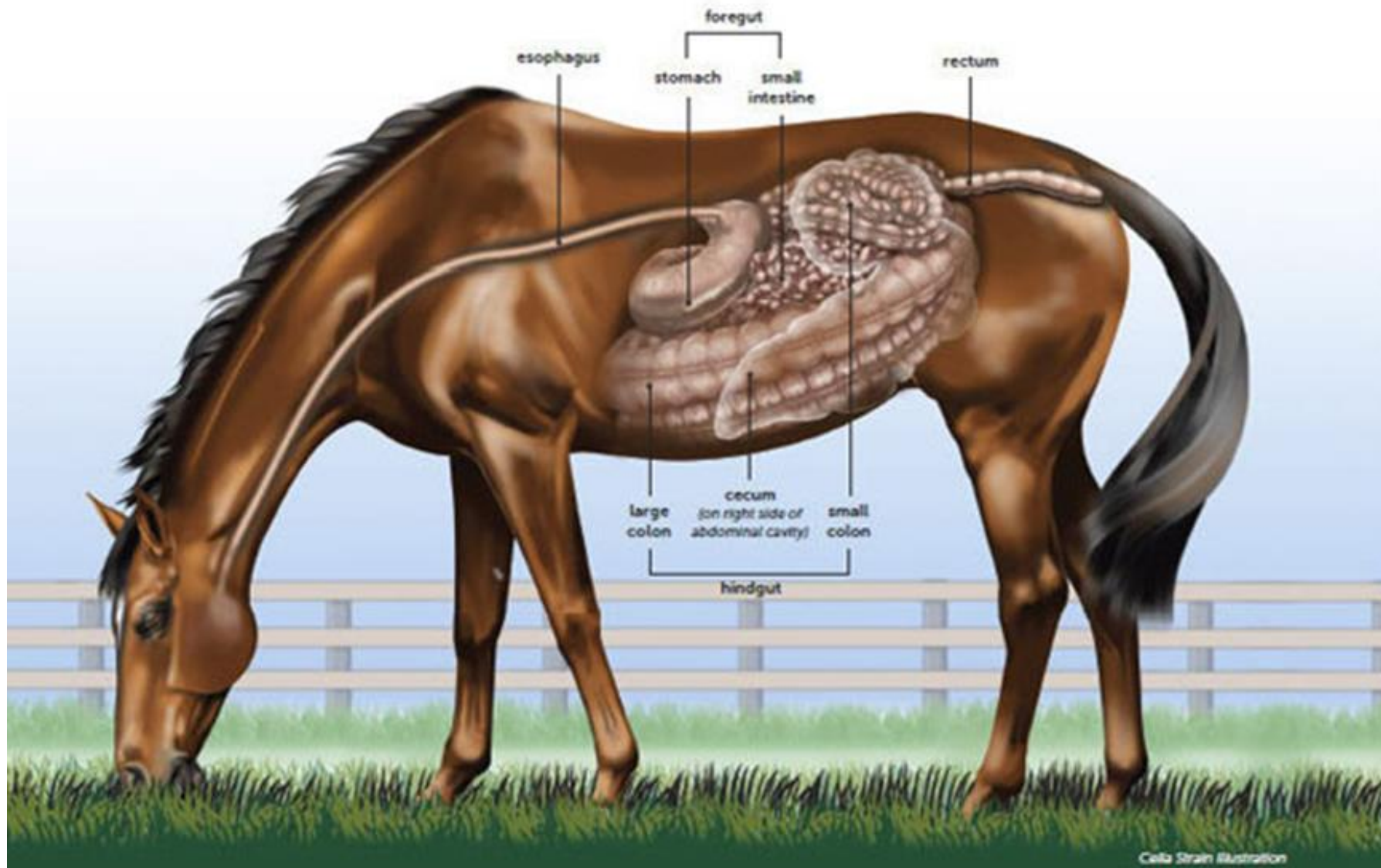
R\$ 25,00/L

Profa. Dra. Roberta Ariboni Brandi

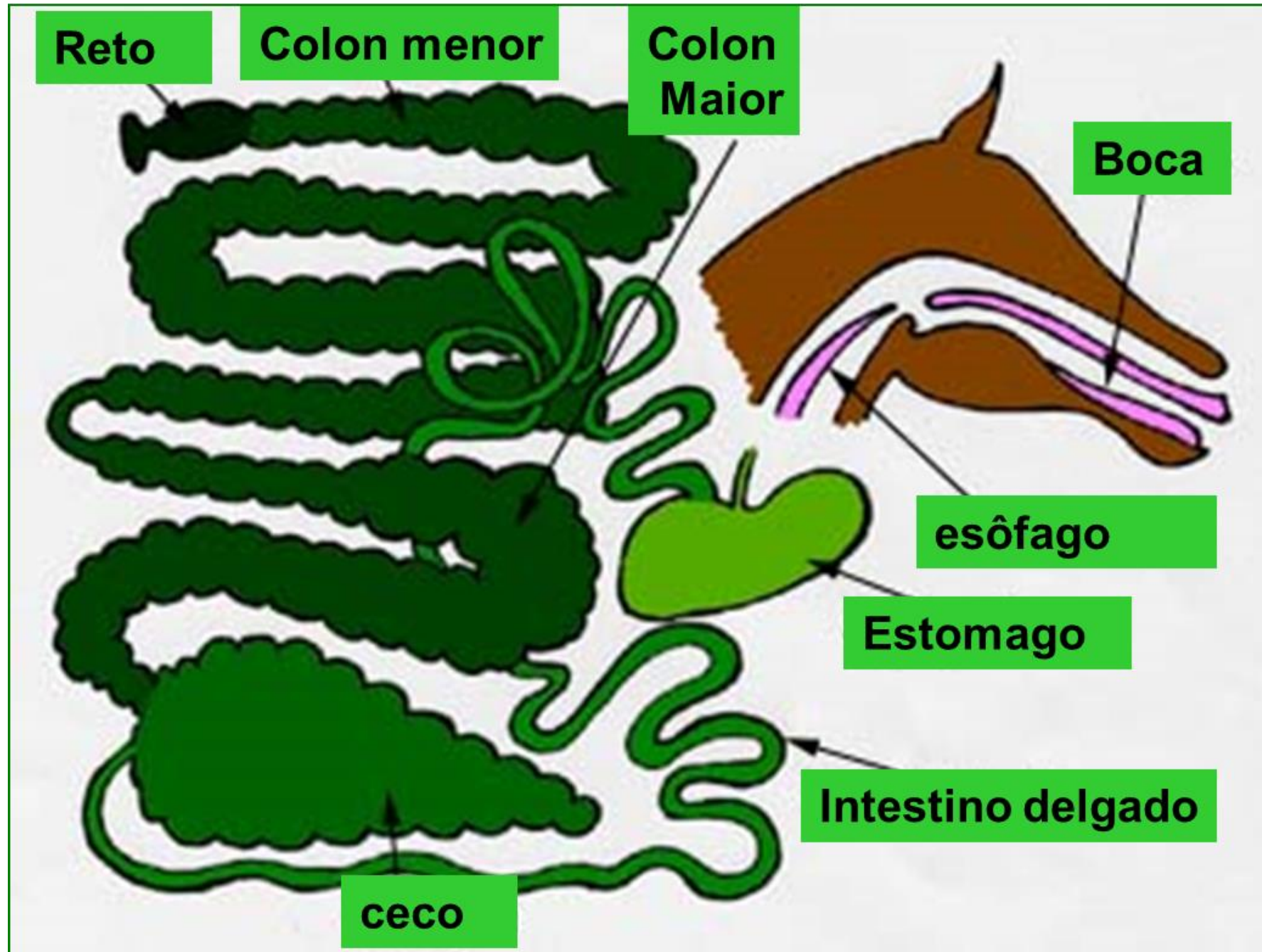
Manejo de fases



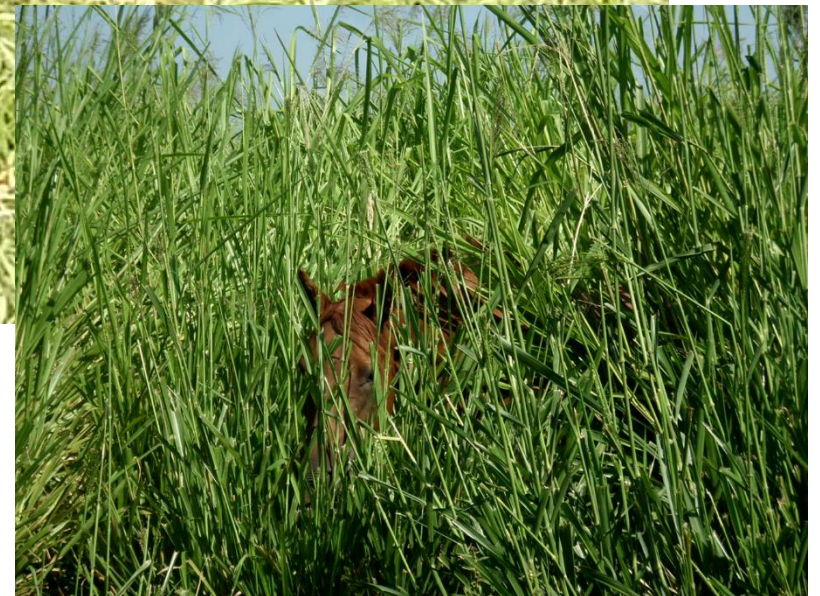
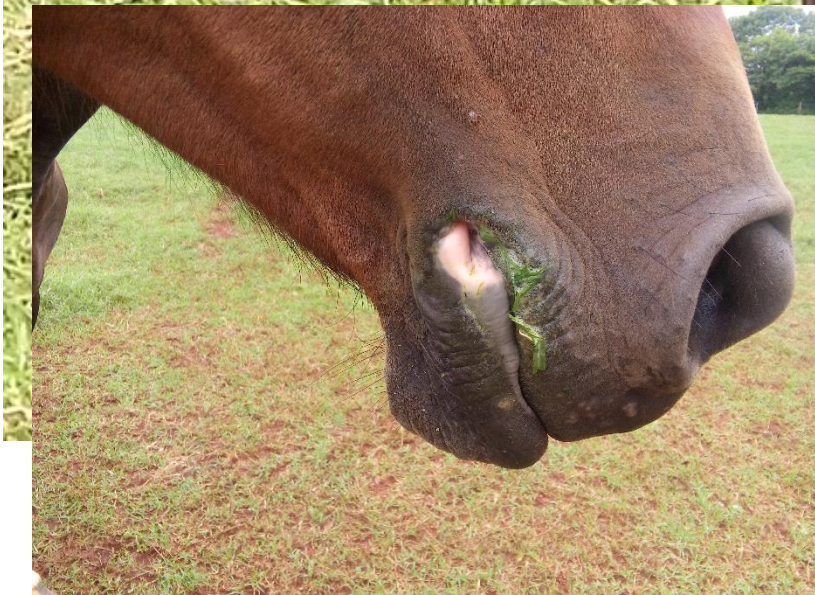
O sistema digestório de equinos



O sistema digestório de equinos



Produção de forrageiras para equinos



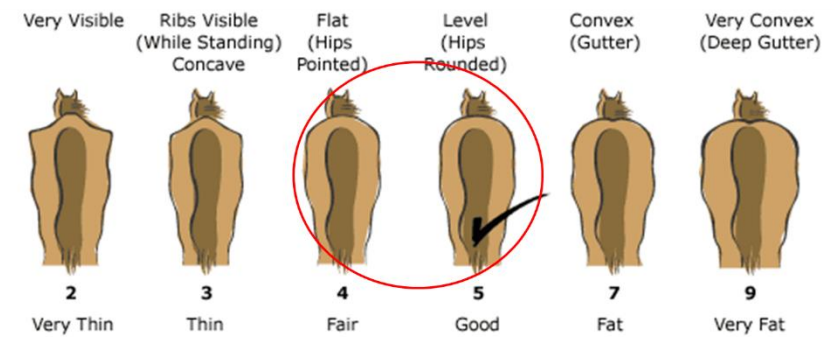
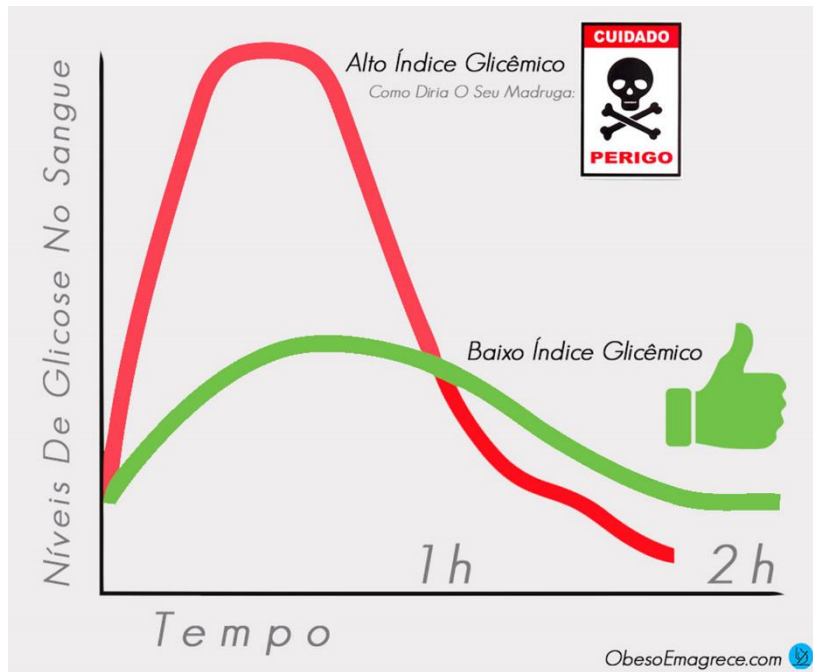
Escolha dos ingredientes da dieta



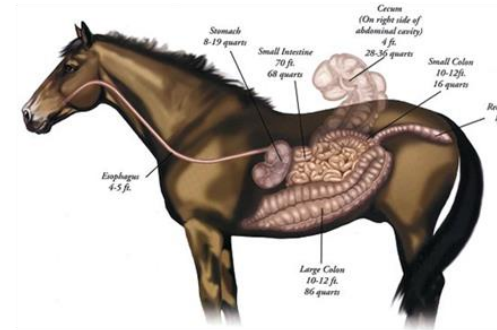
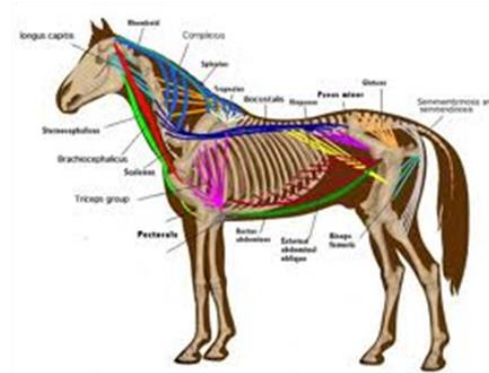
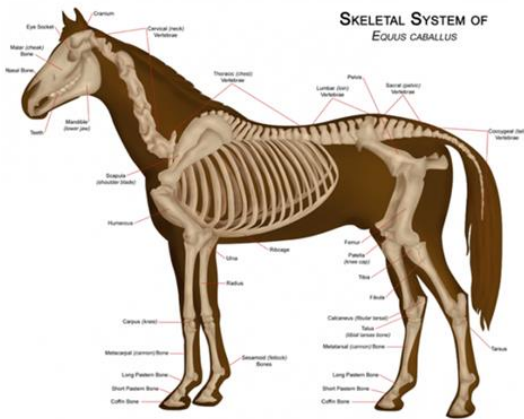
A dieta



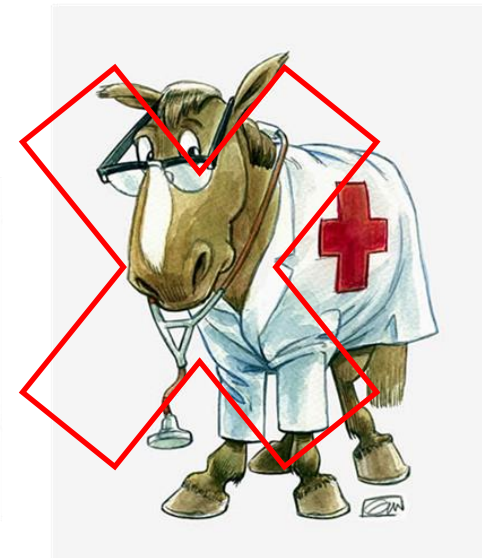
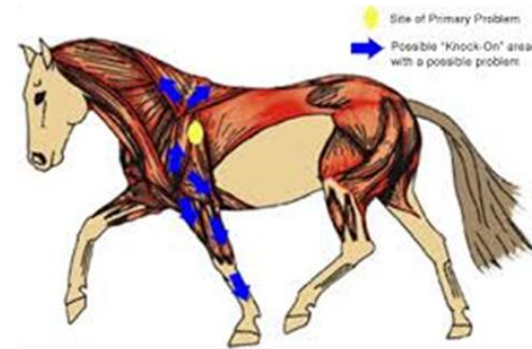
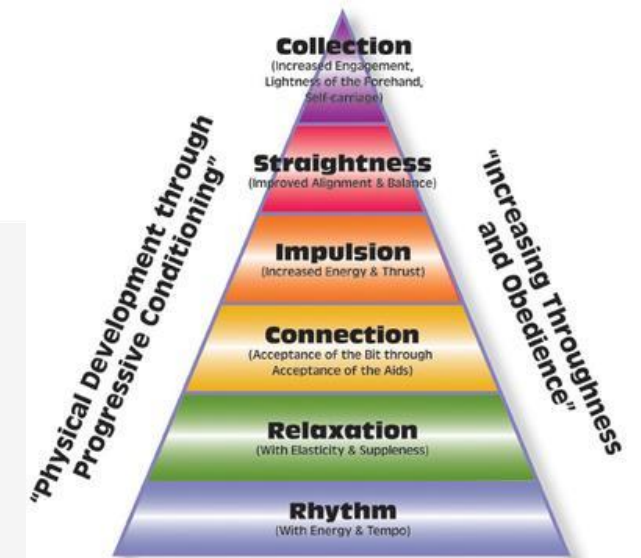
Tendências da nutrição



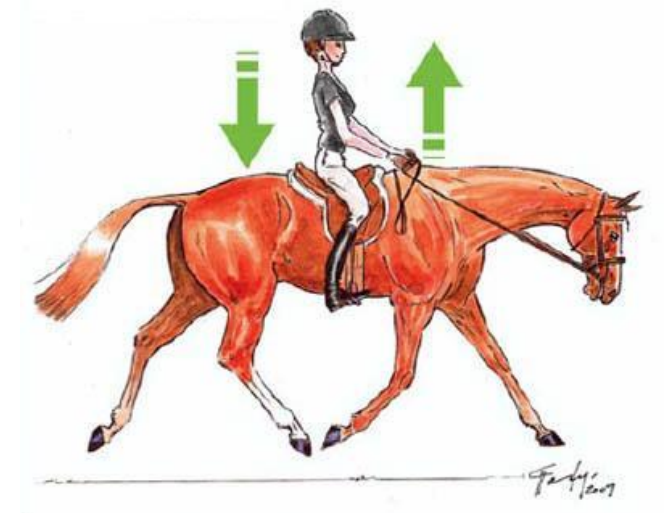
Treinamento de cavalos



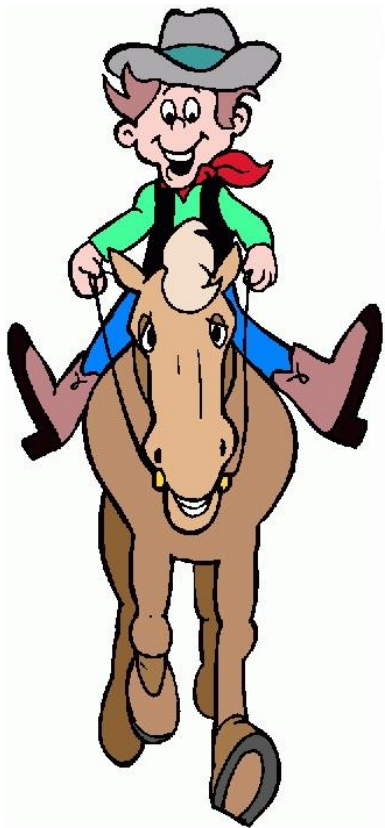
Pyramid of Training



Treinamento de cavalos



Modalidades atléticas



Gestão

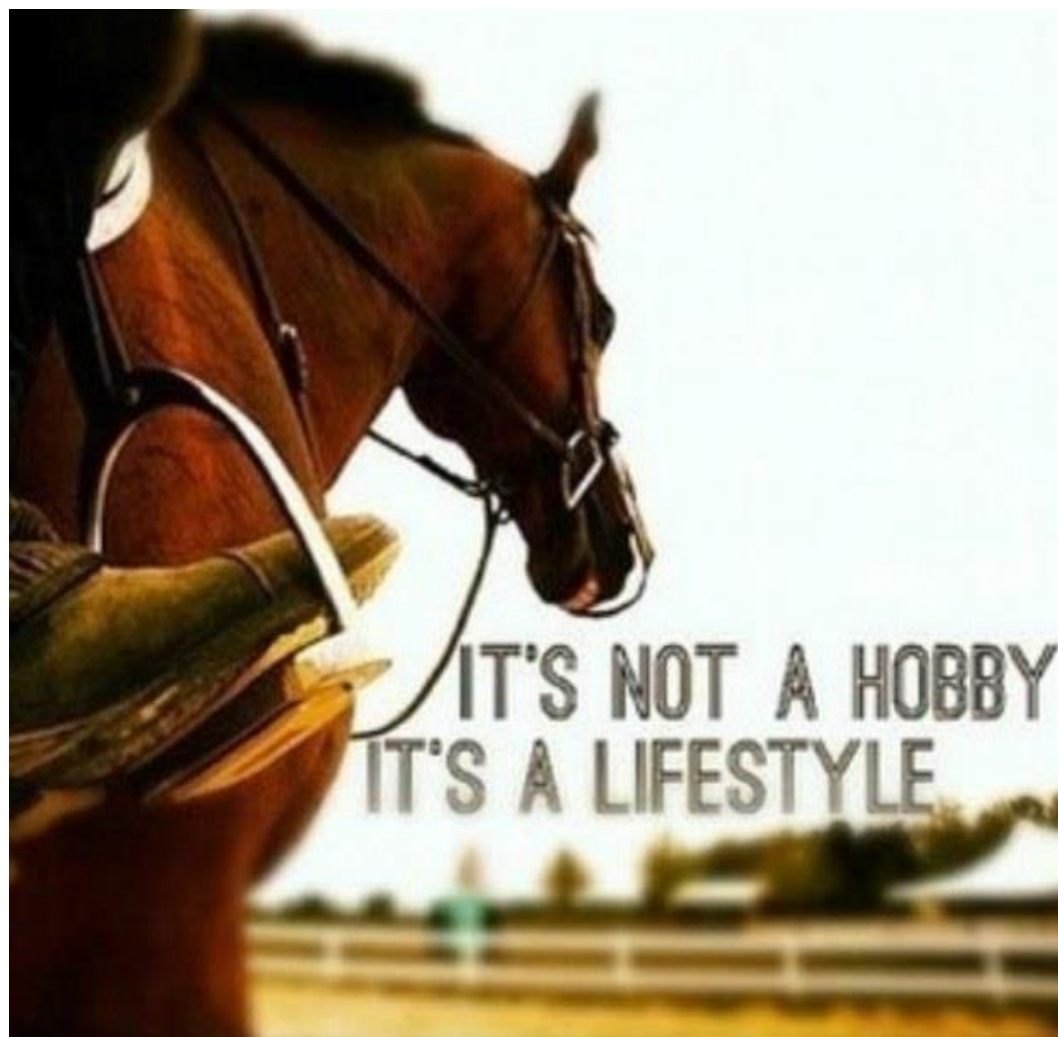
Eqüinocultura: atividade lucrativa ou Hobby?

PRODUÇÃO
X
PRODUTIVIDADE



Considerações finais





equoterapia.esalq@usp.br



robertabrandi@usp.br



@equinoculturaesalq