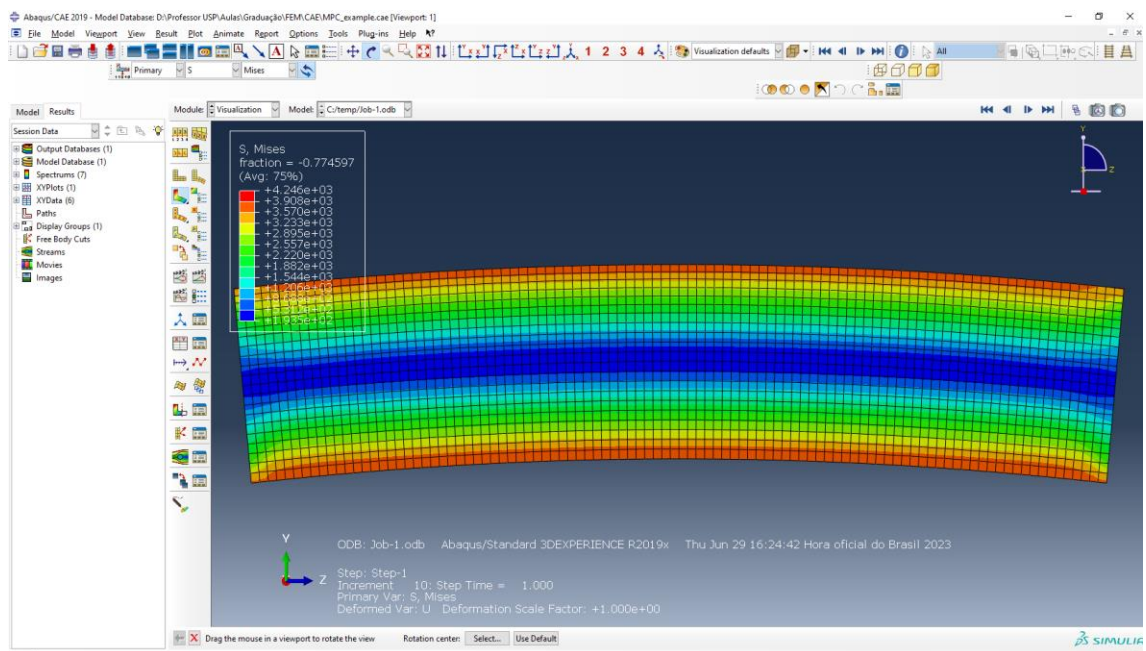
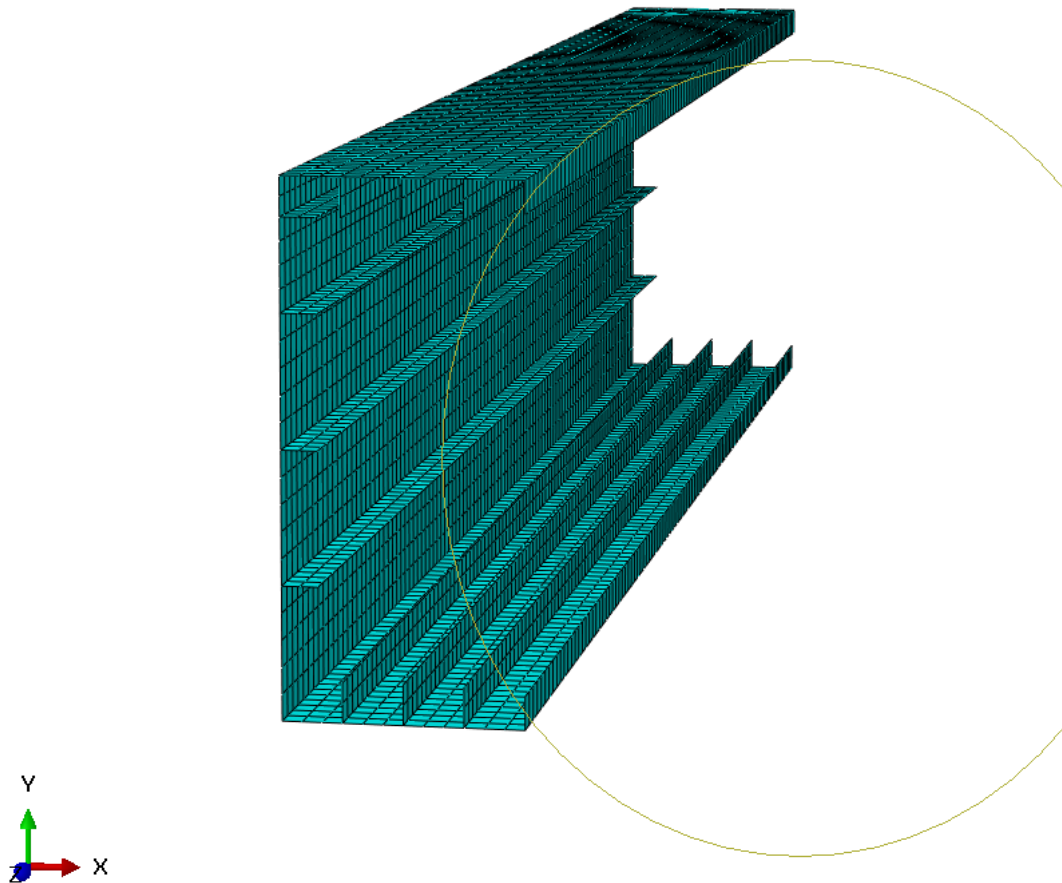
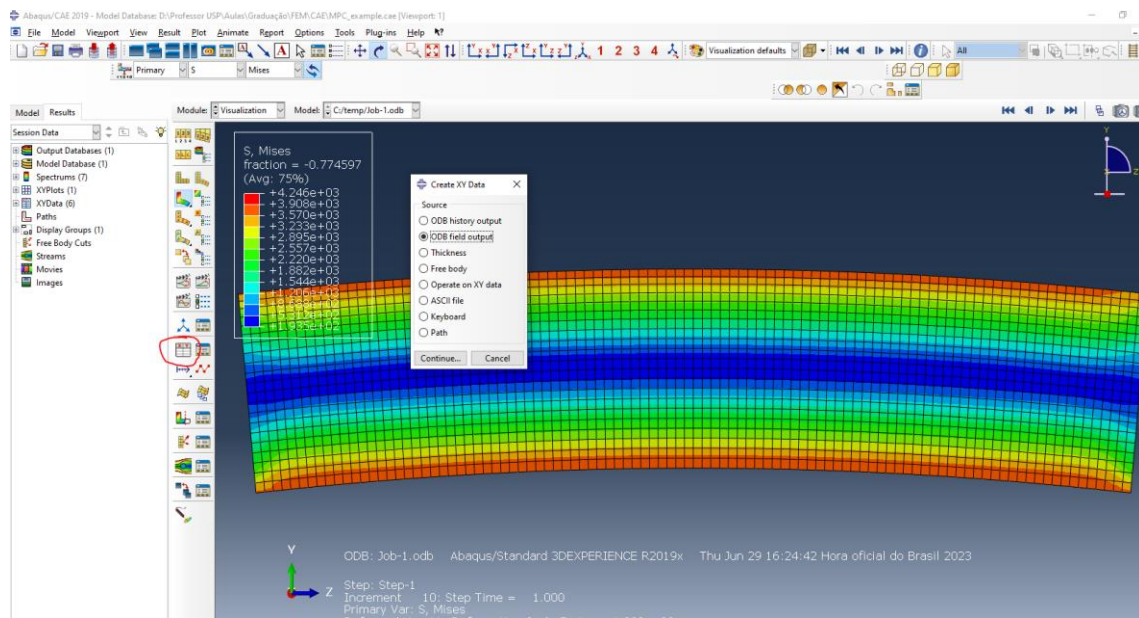


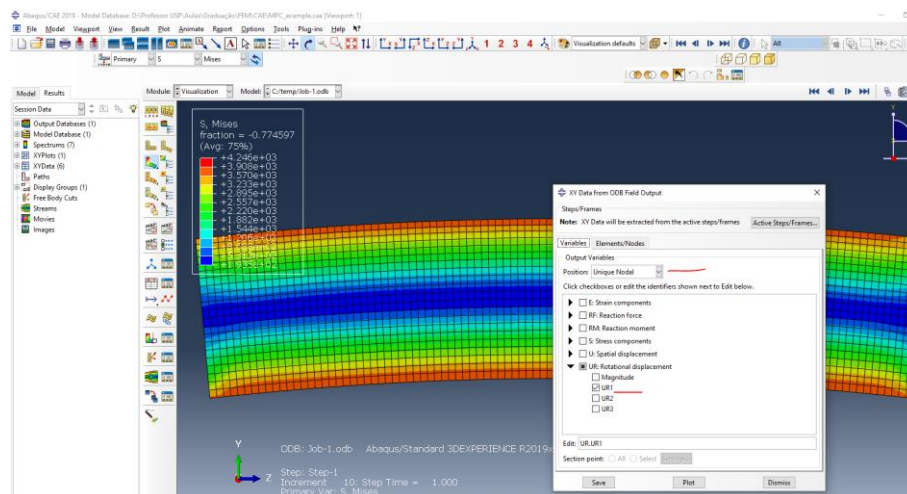
Exemplo de viga com carregamento aplicado nos extremos usando rotações em vez de momento.



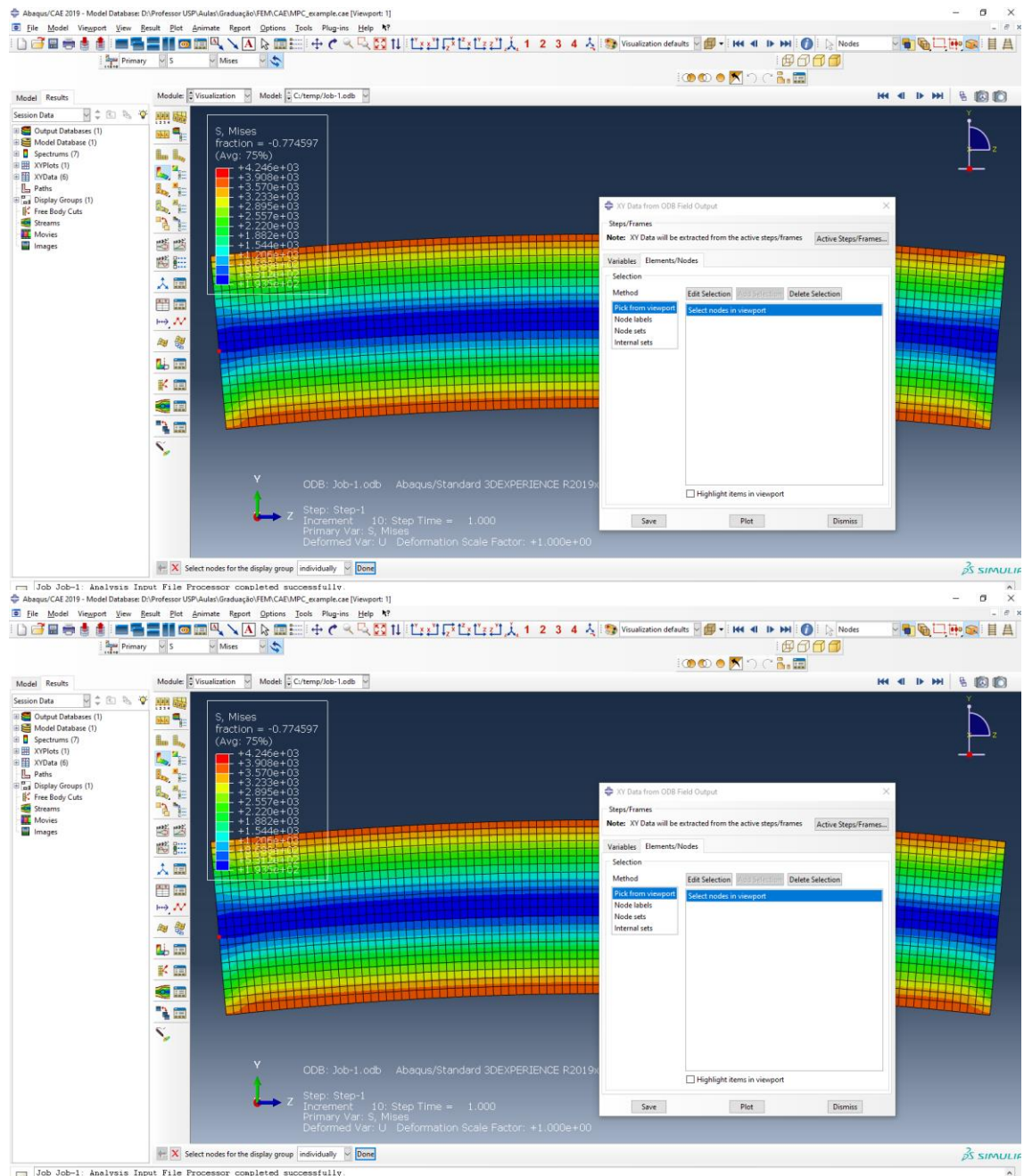
Plot Momento-Rotação

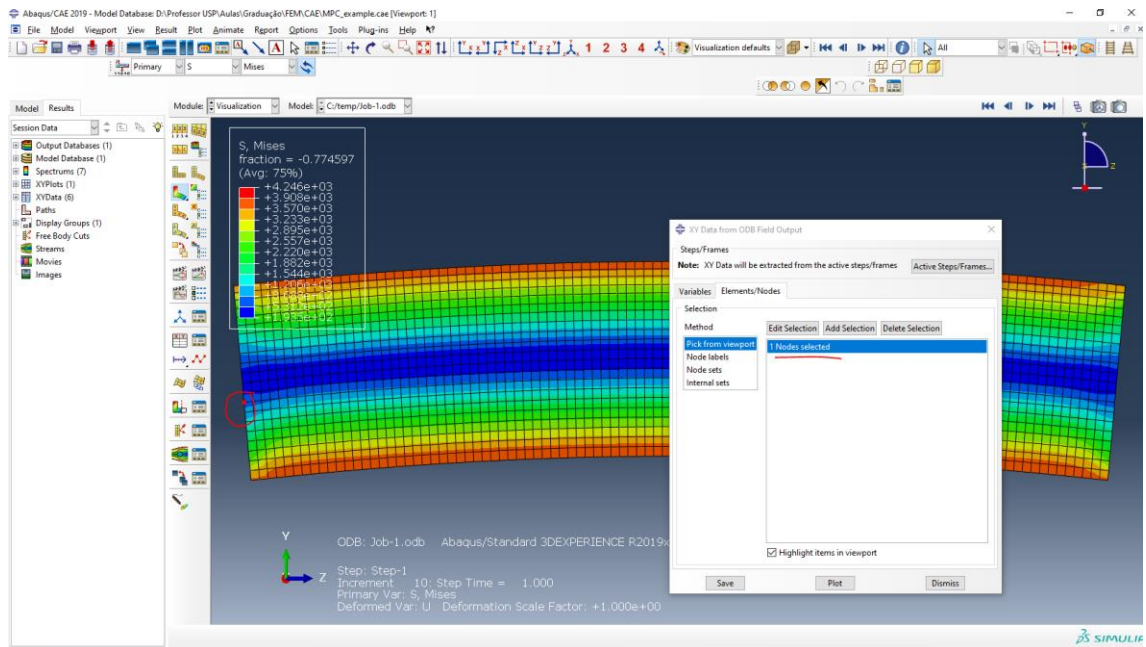


Rotação aplicada

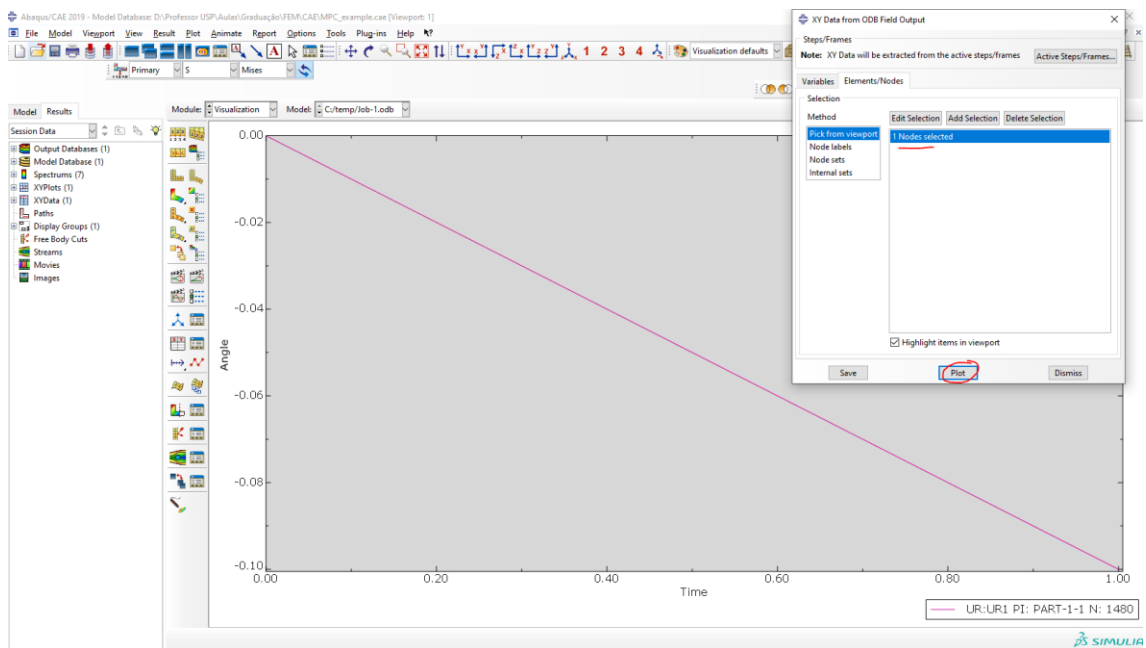


Selecionar um nó da face onde foram aplicadas as rotações

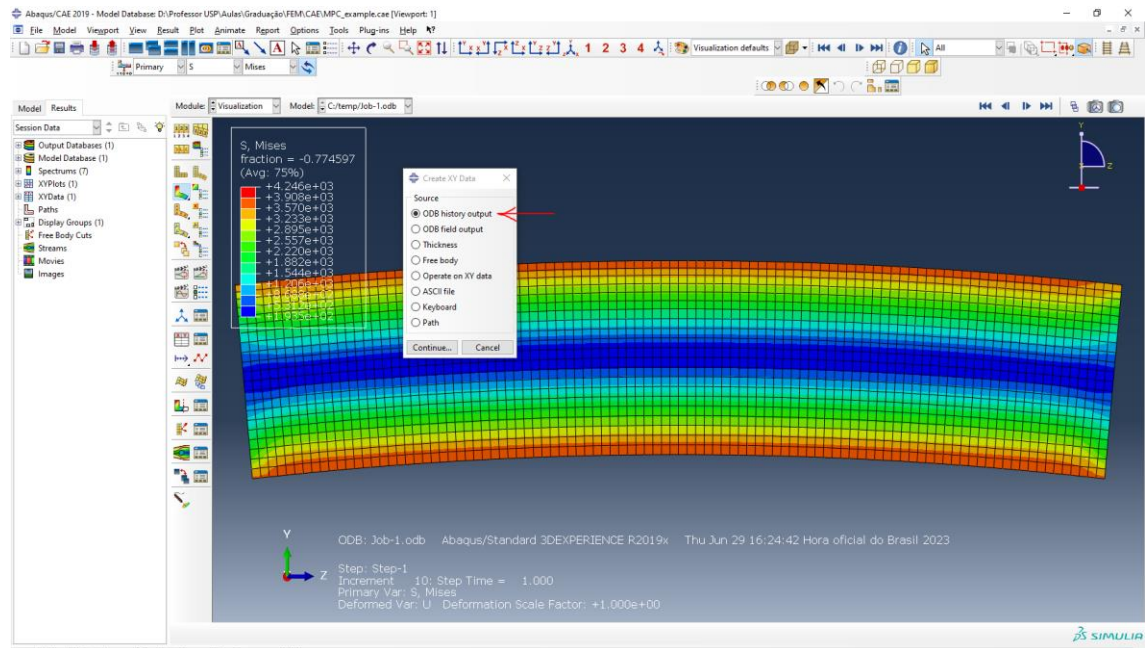




Plot results



Momento fletor associado à rotação imposta θ_y



Escolher reaction moment results (para os dois RP)

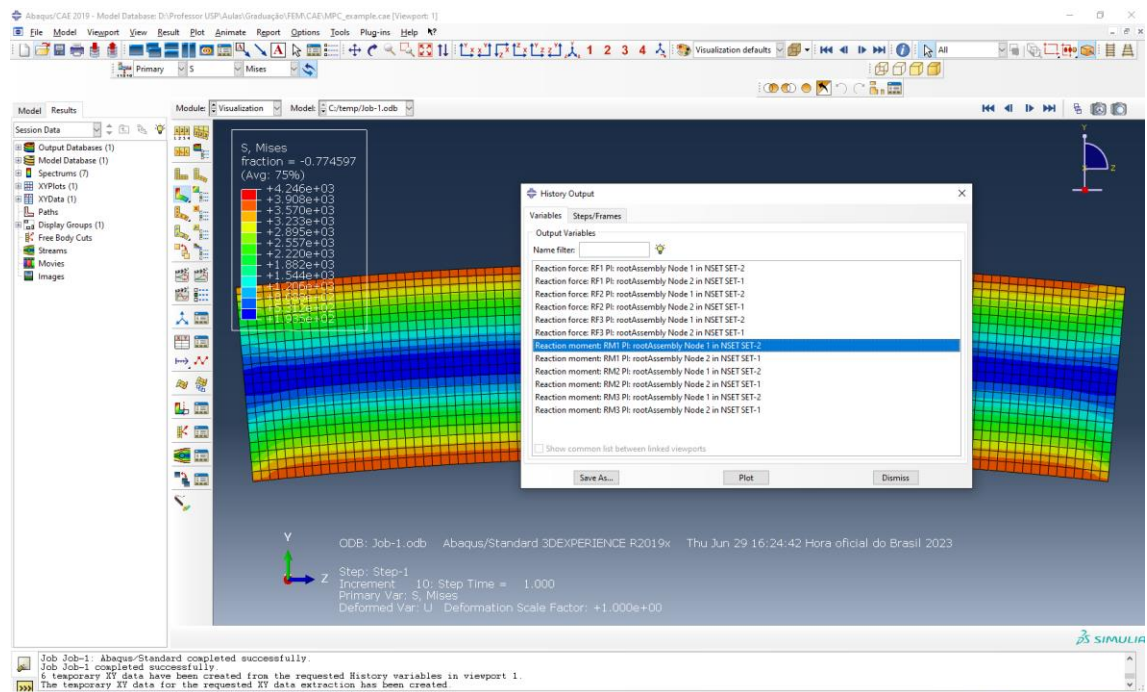
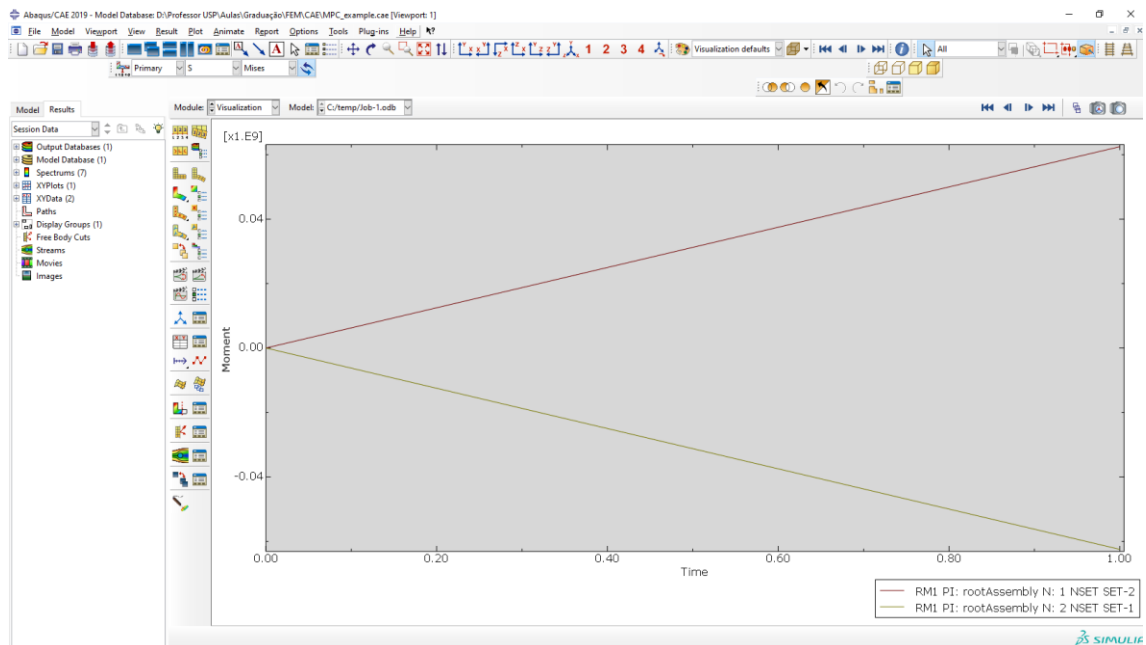
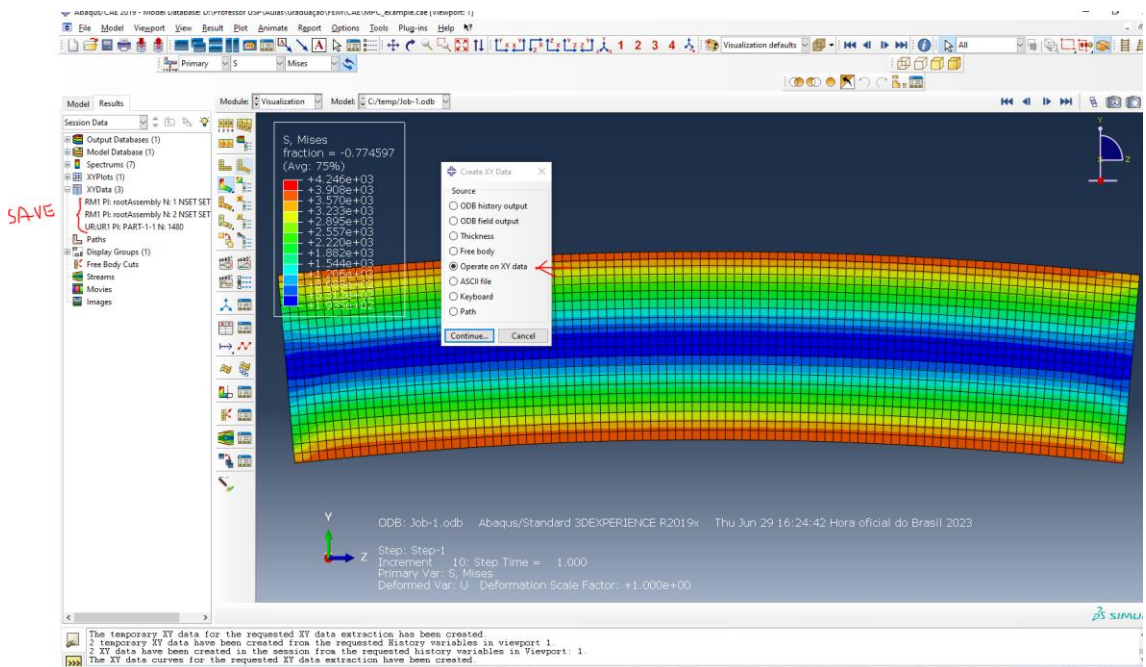


Gráfico do momento resultante aplicado associado à rotação aplicada



Finalmente graficar Momento versus Rotação para identificar em qual instante da análise devemos verificar o fator de segurança em cada elemento associado ao momento fletor da norma.



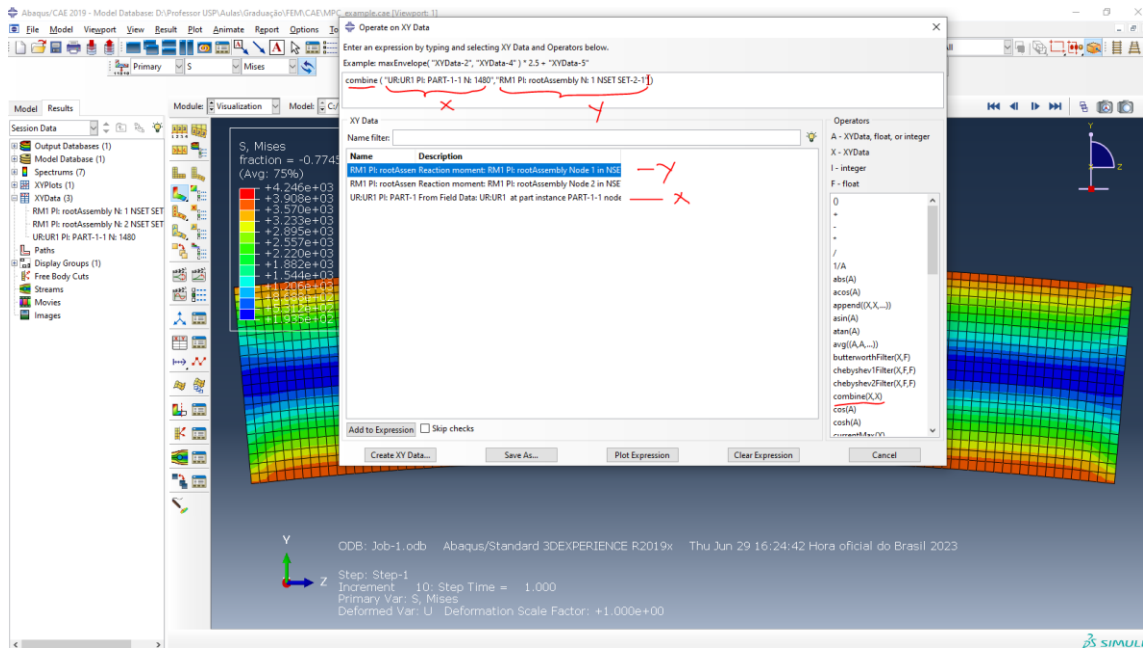


Grafico M vs rotação

