



ESCOLA POLITÉCNICA DA UNIVERSIDADE DE SÃO PAULO

PMR 3203

Laboratório 3

Torneamento convencional

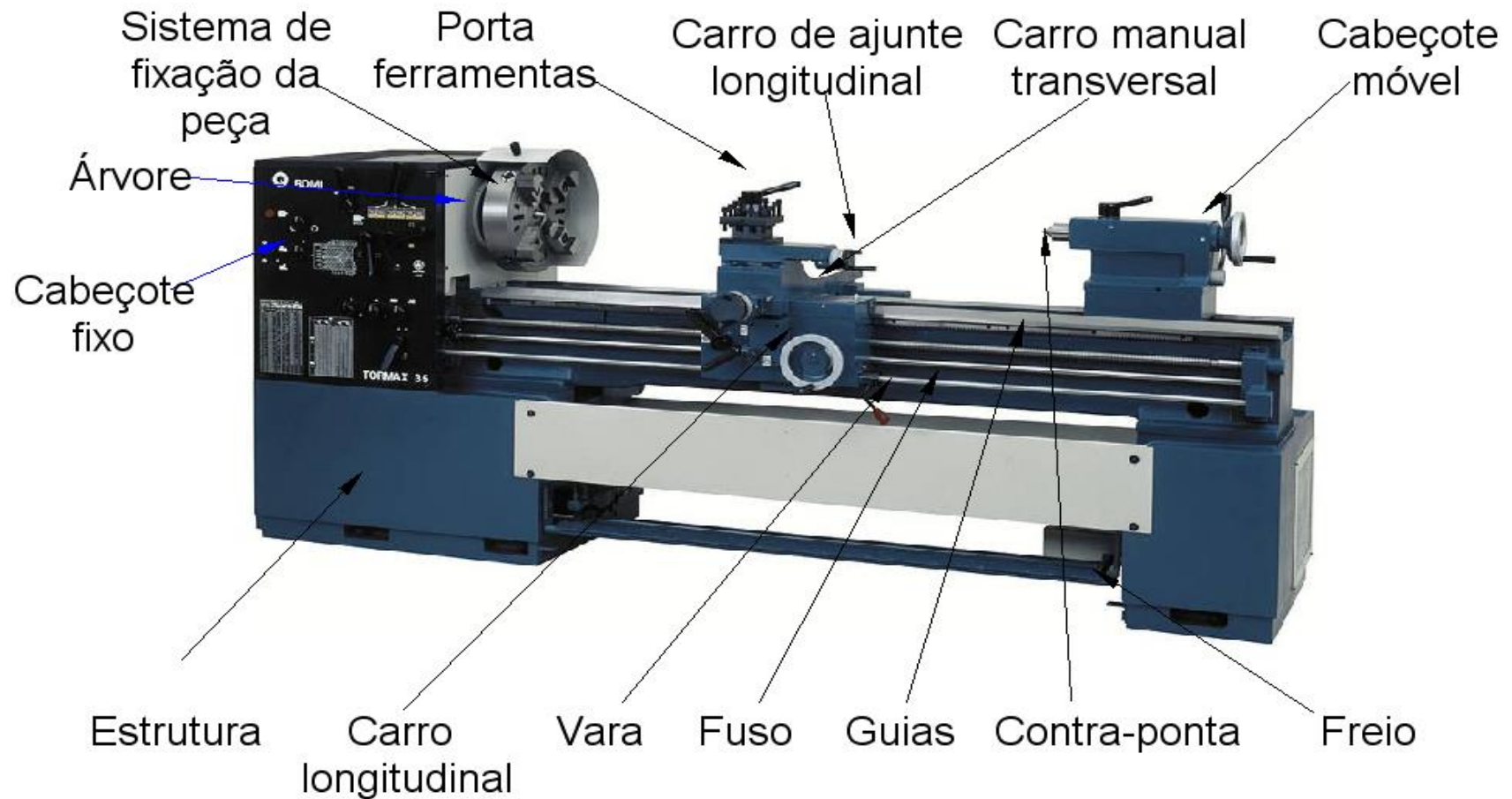
Nome:

NUSP:

2023.1

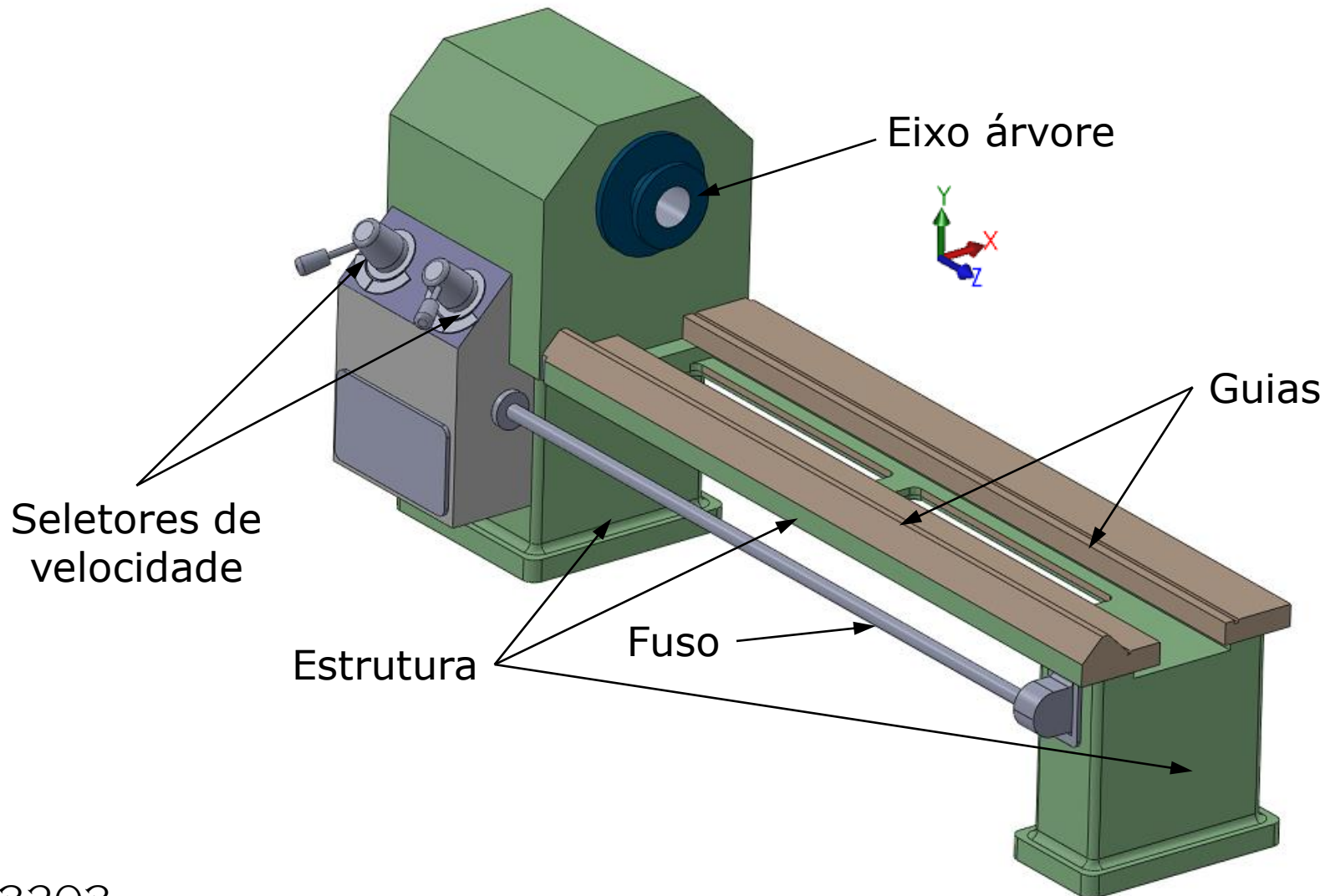


Torno convencional





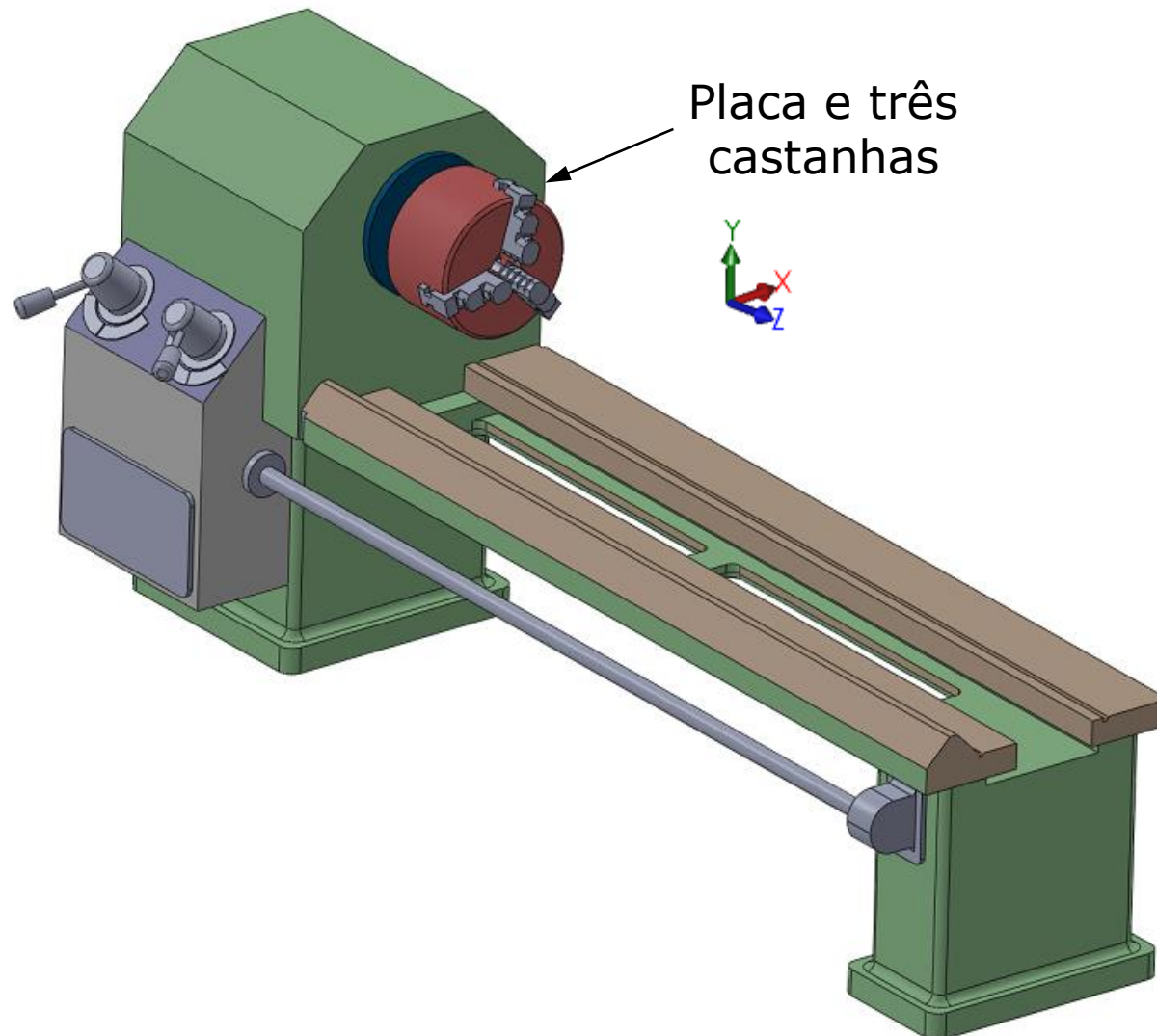
Torno de bancada Constituintes





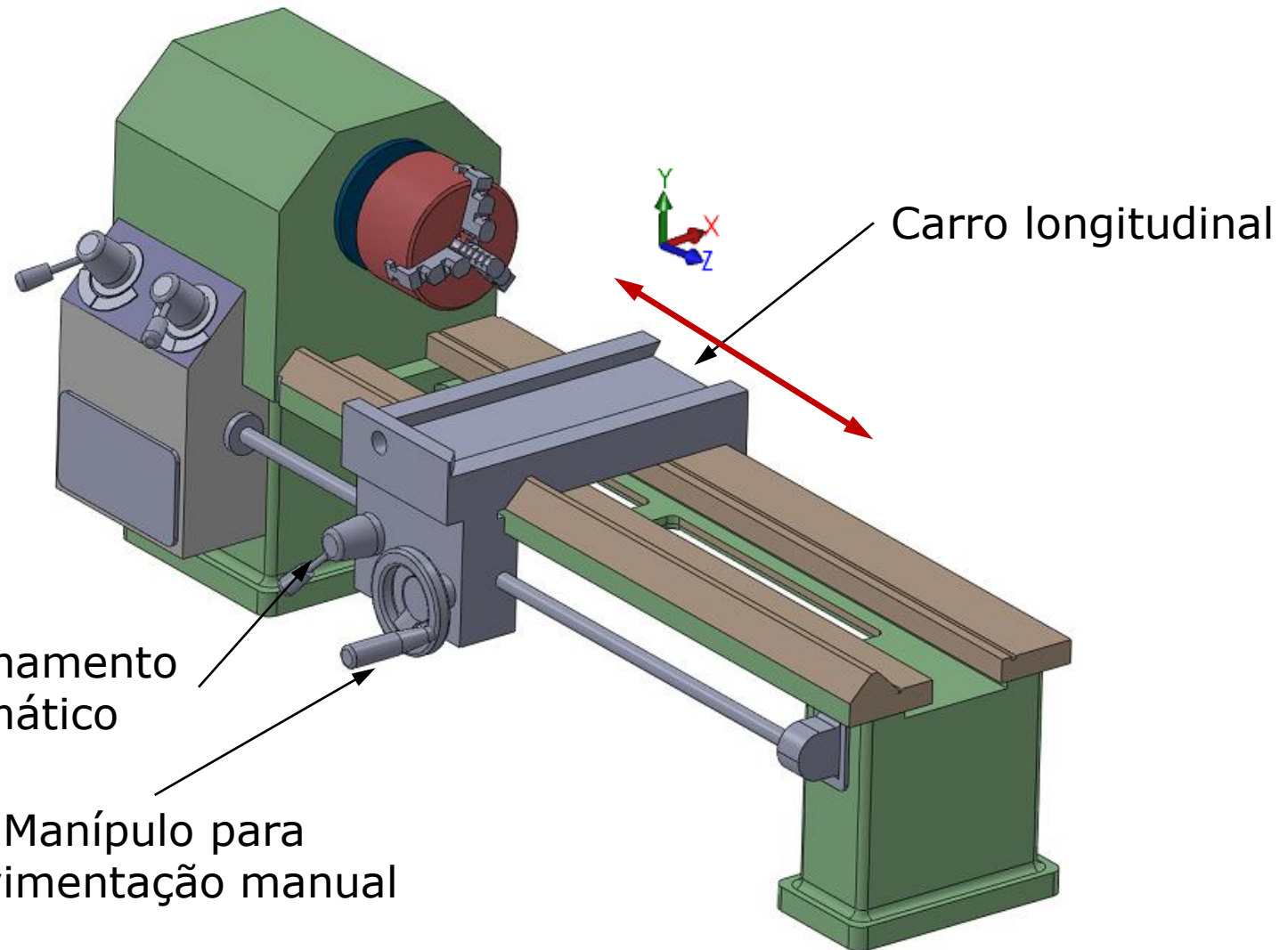
Torno de bancada

Constituintes



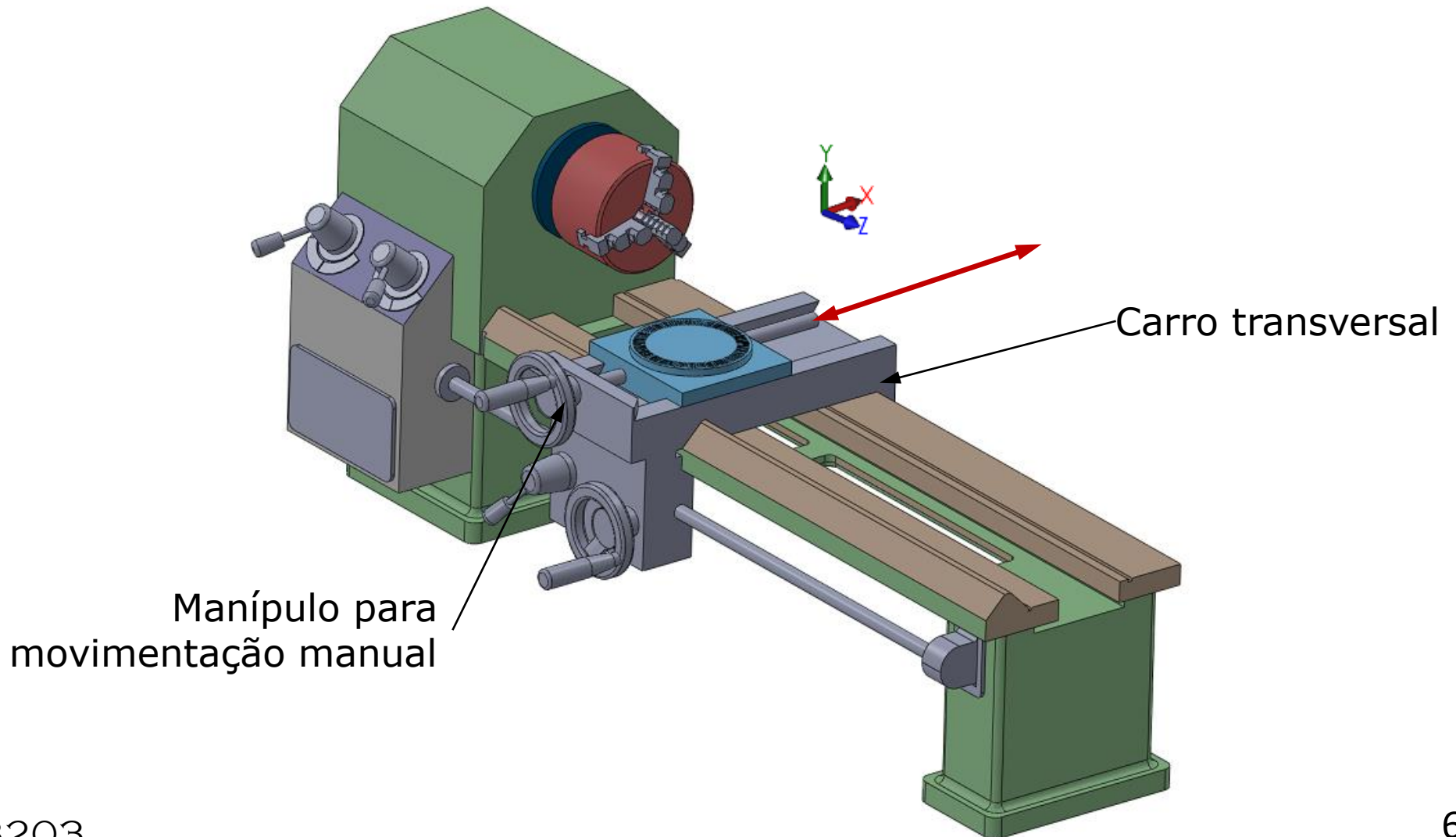


Torno de bancada Constituintes



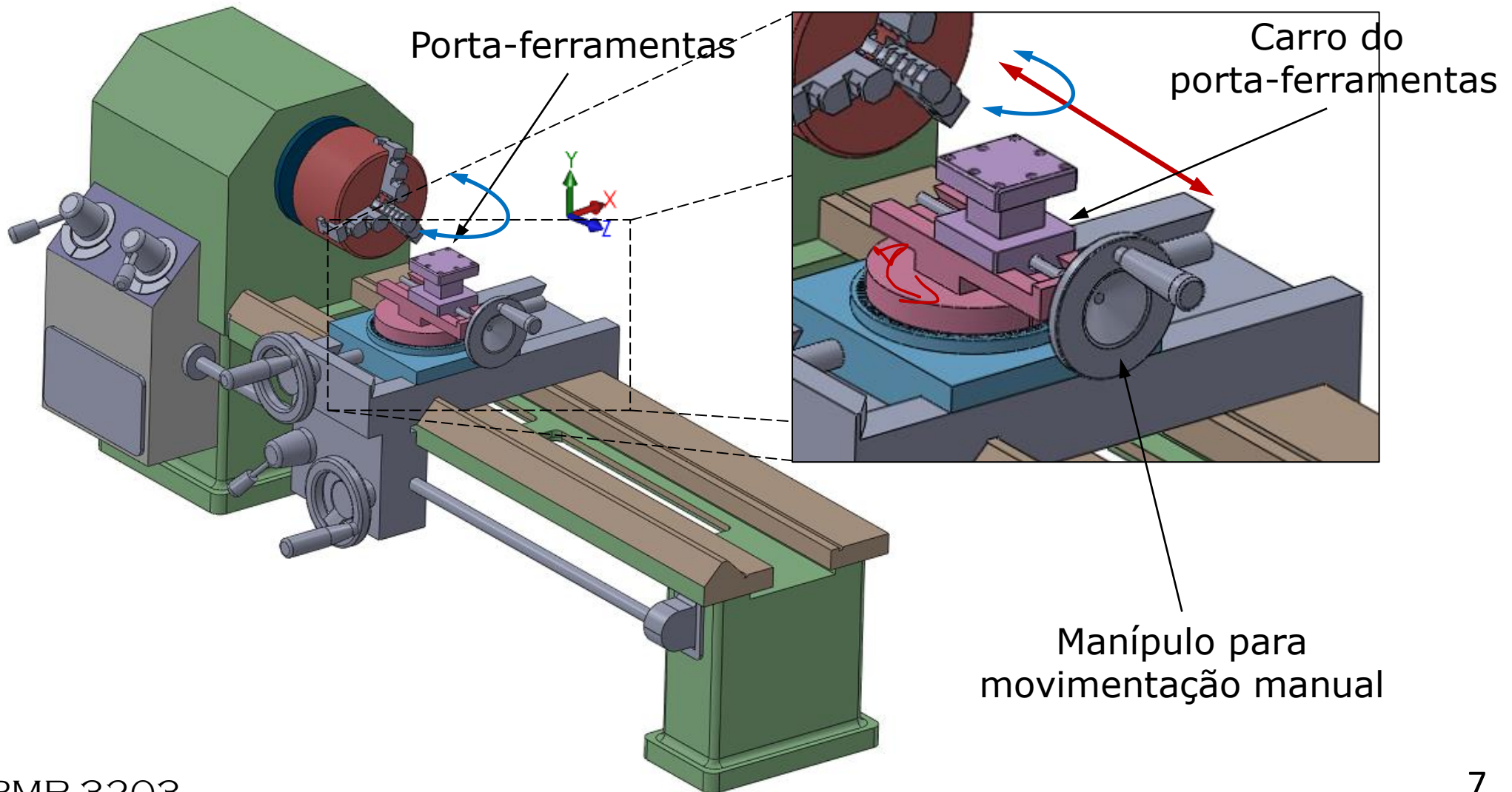


Torno de bancada Constituintes



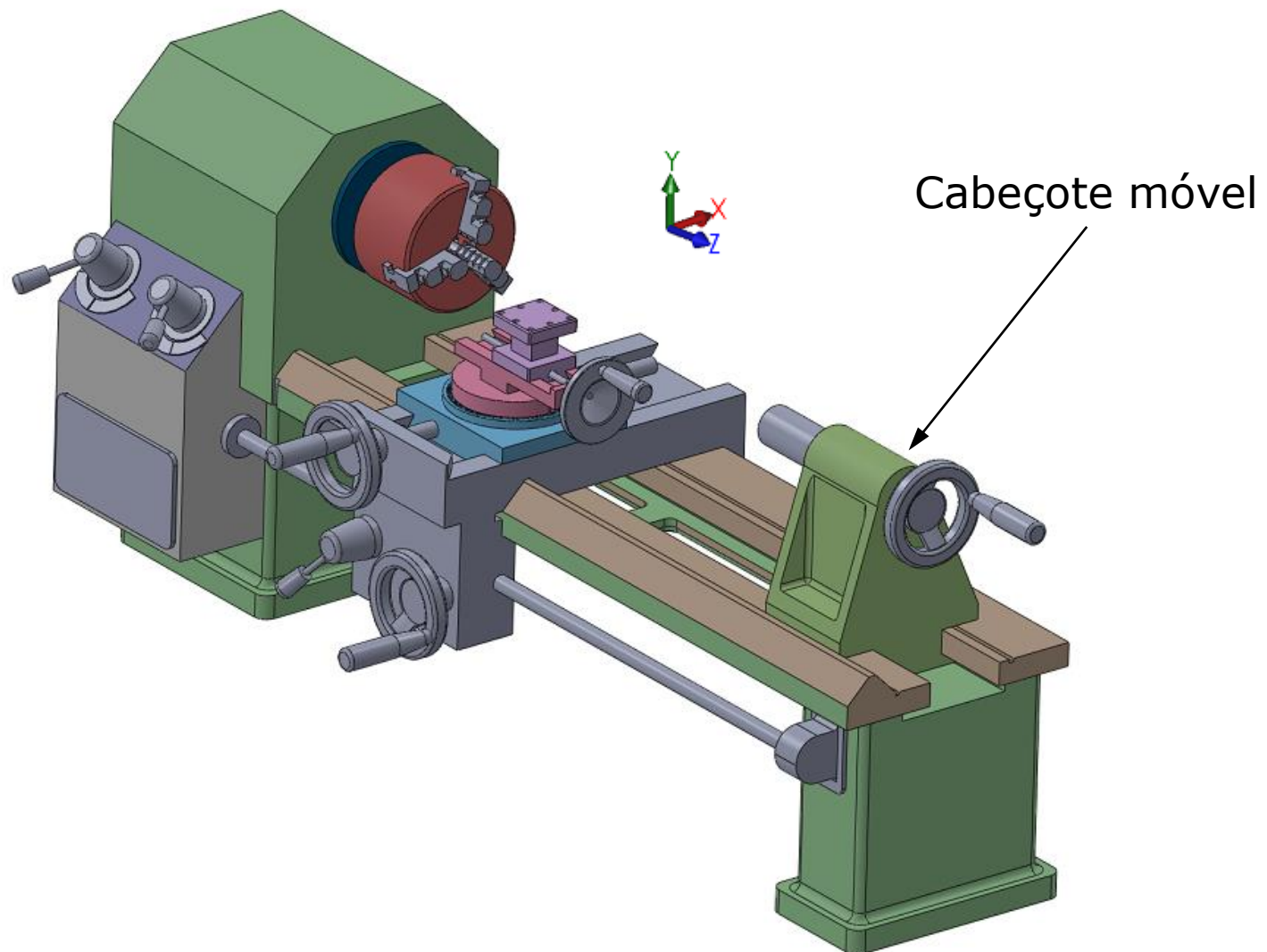


Torno de bancada Constituintes





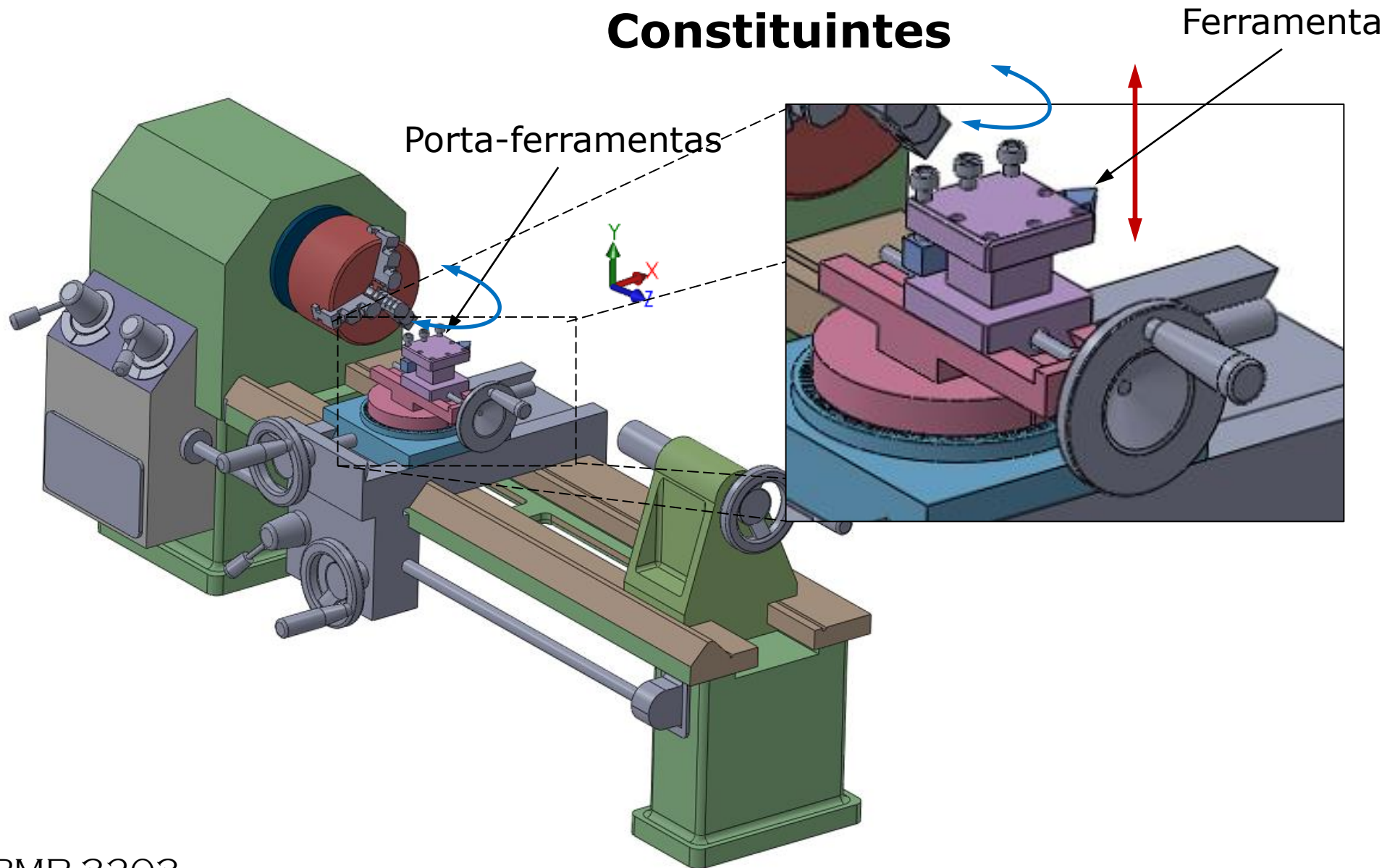
Torno de bancada Constituintes





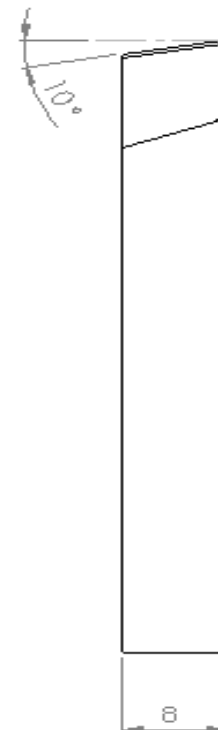
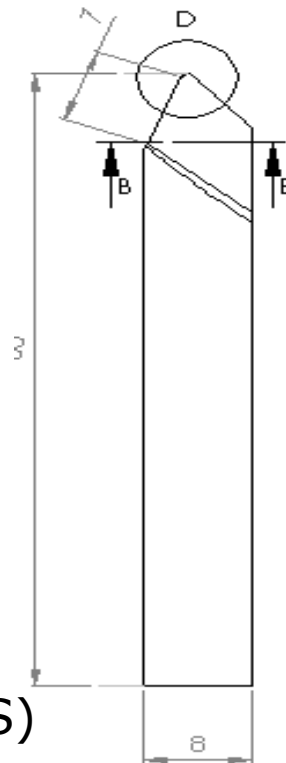
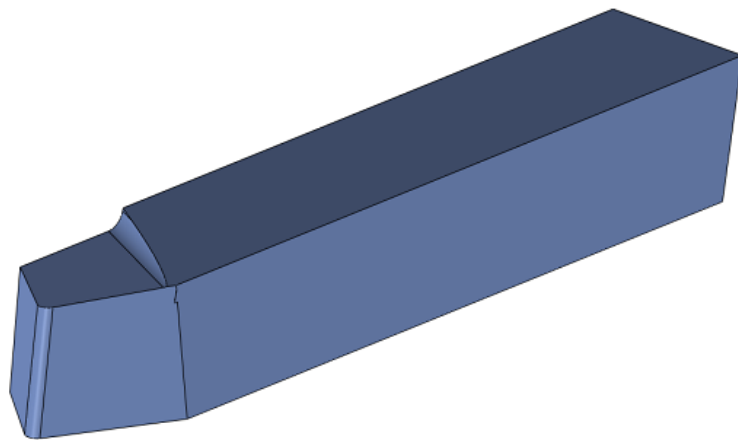
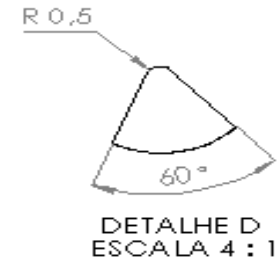
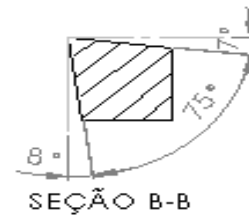
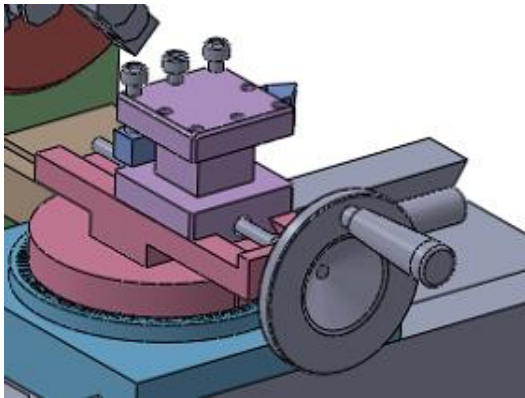
Torno de bancada

Constituintes





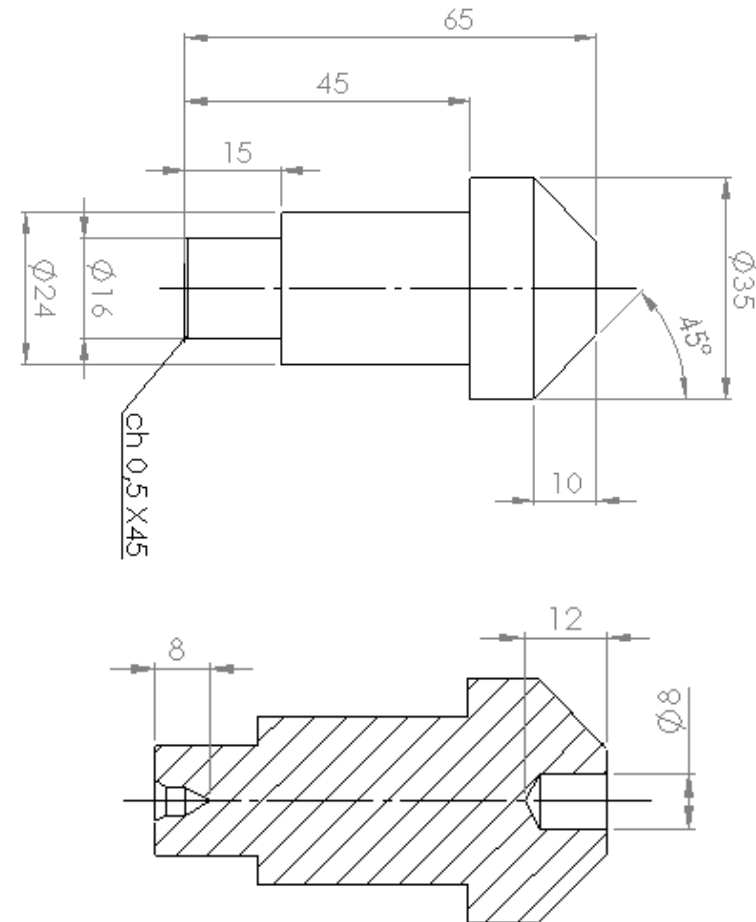
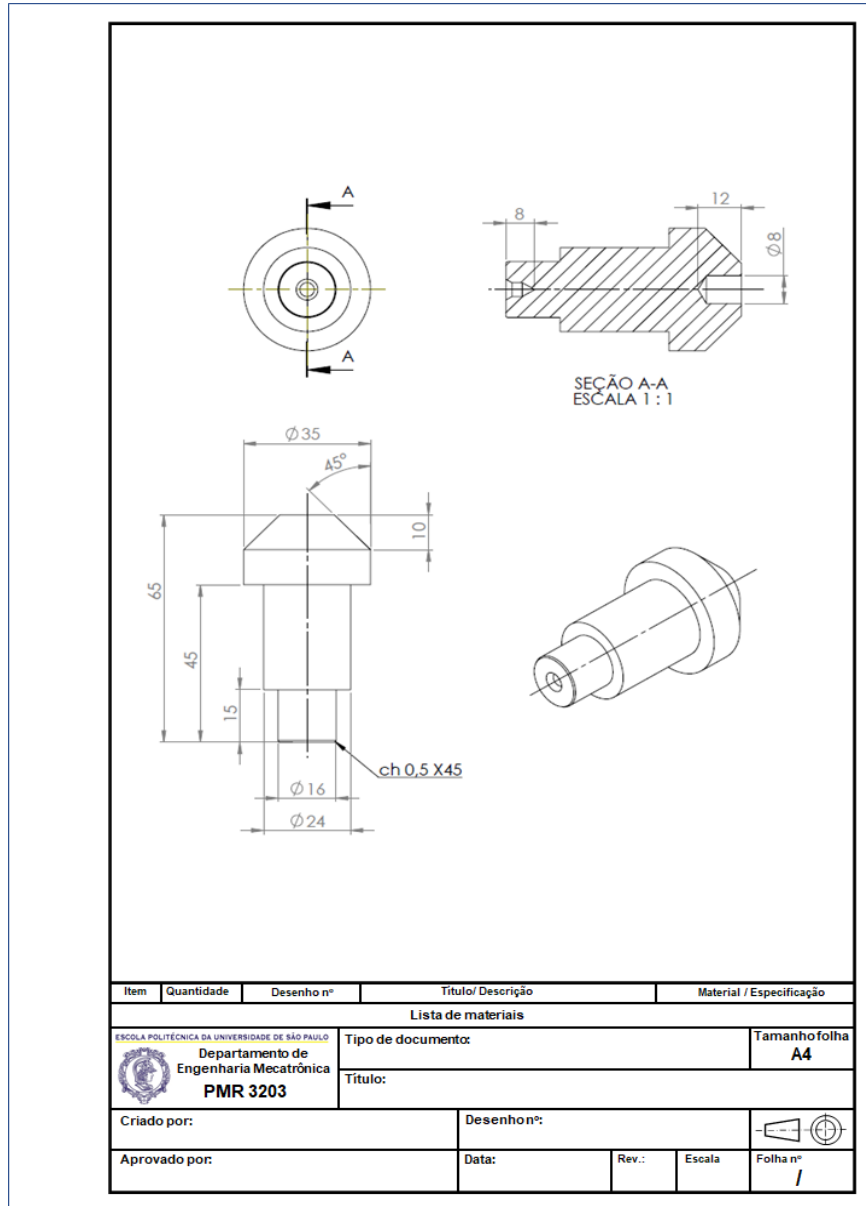
Ferramenta



Ferramenta: Aço rápido 1841 (HSS)



Desenho da Peça#1



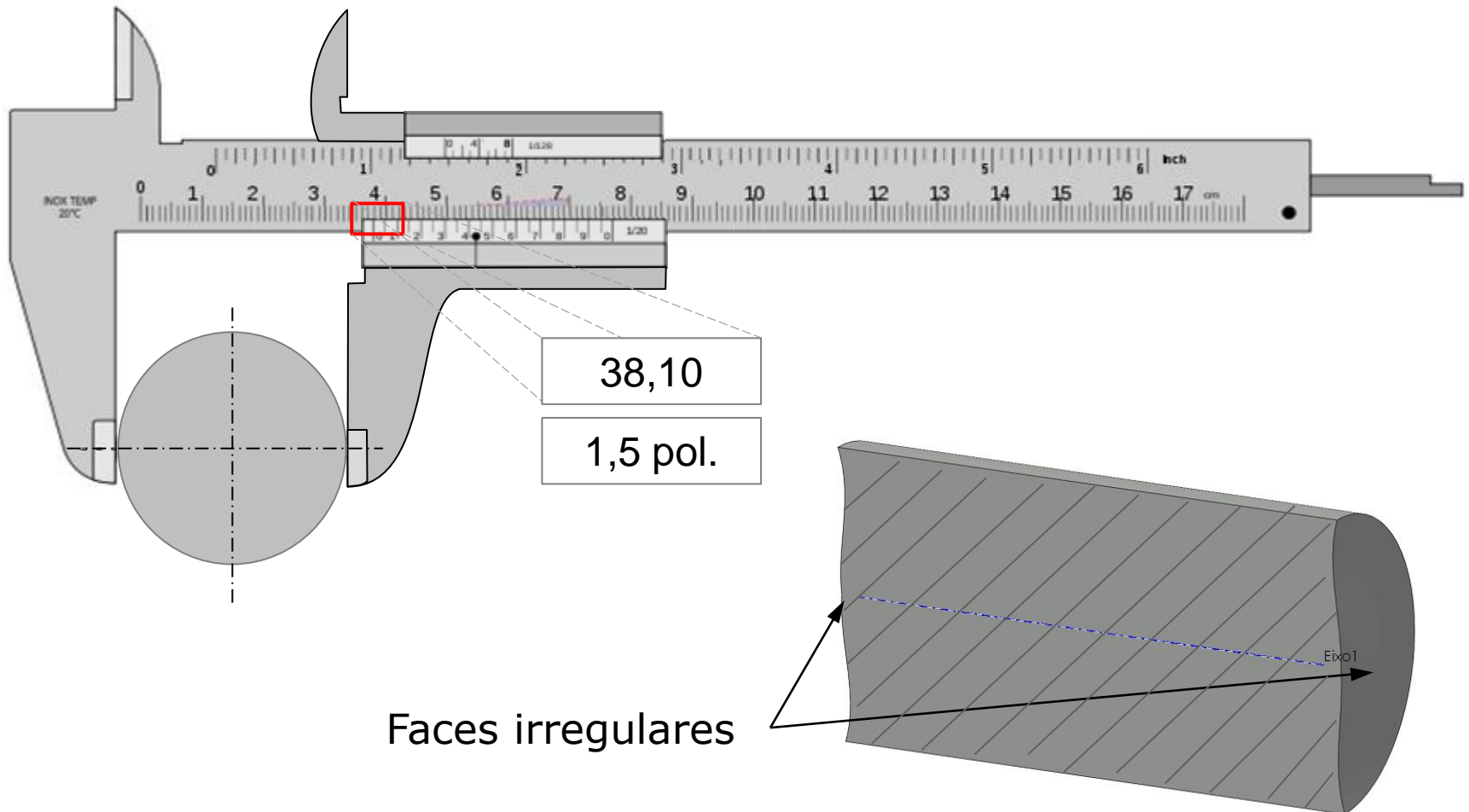
Material: Nylon

$$V_{C_{\text{Nylon}}} = 250 : 500 \text{ m/min}$$

$$n = \frac{V_c \cdot 1000}{\pi \cdot D}$$

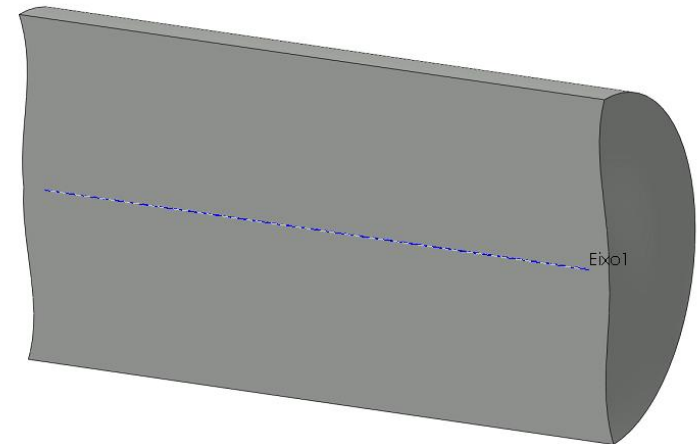
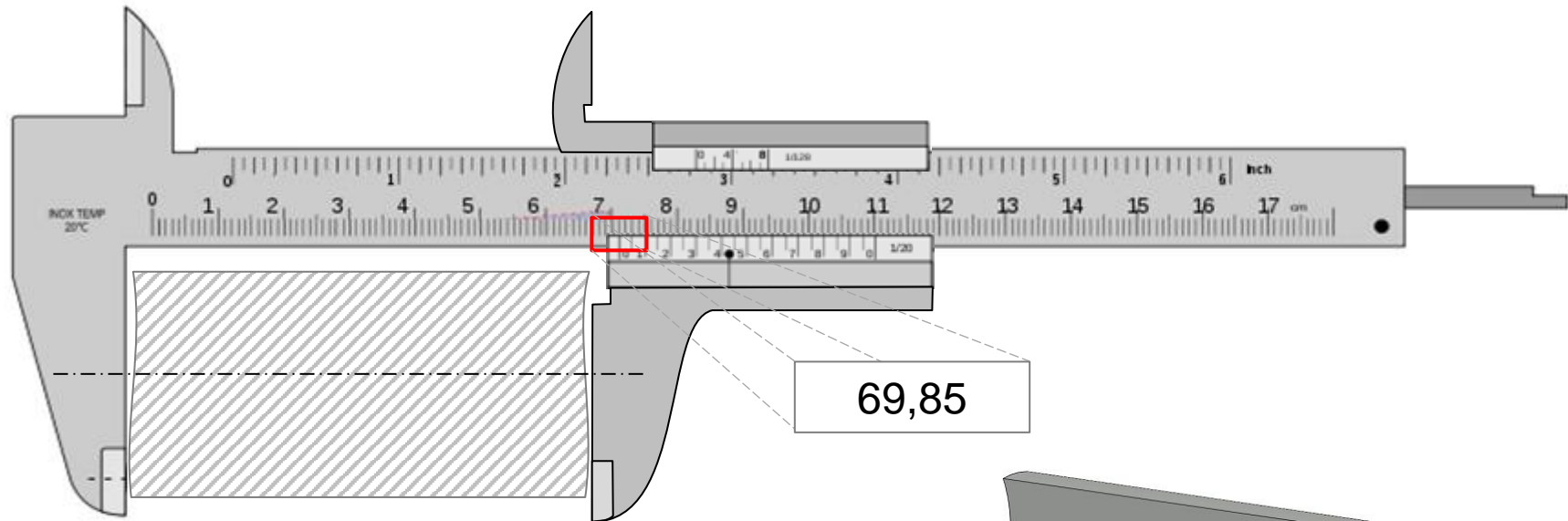


Dimensões da matéria prima



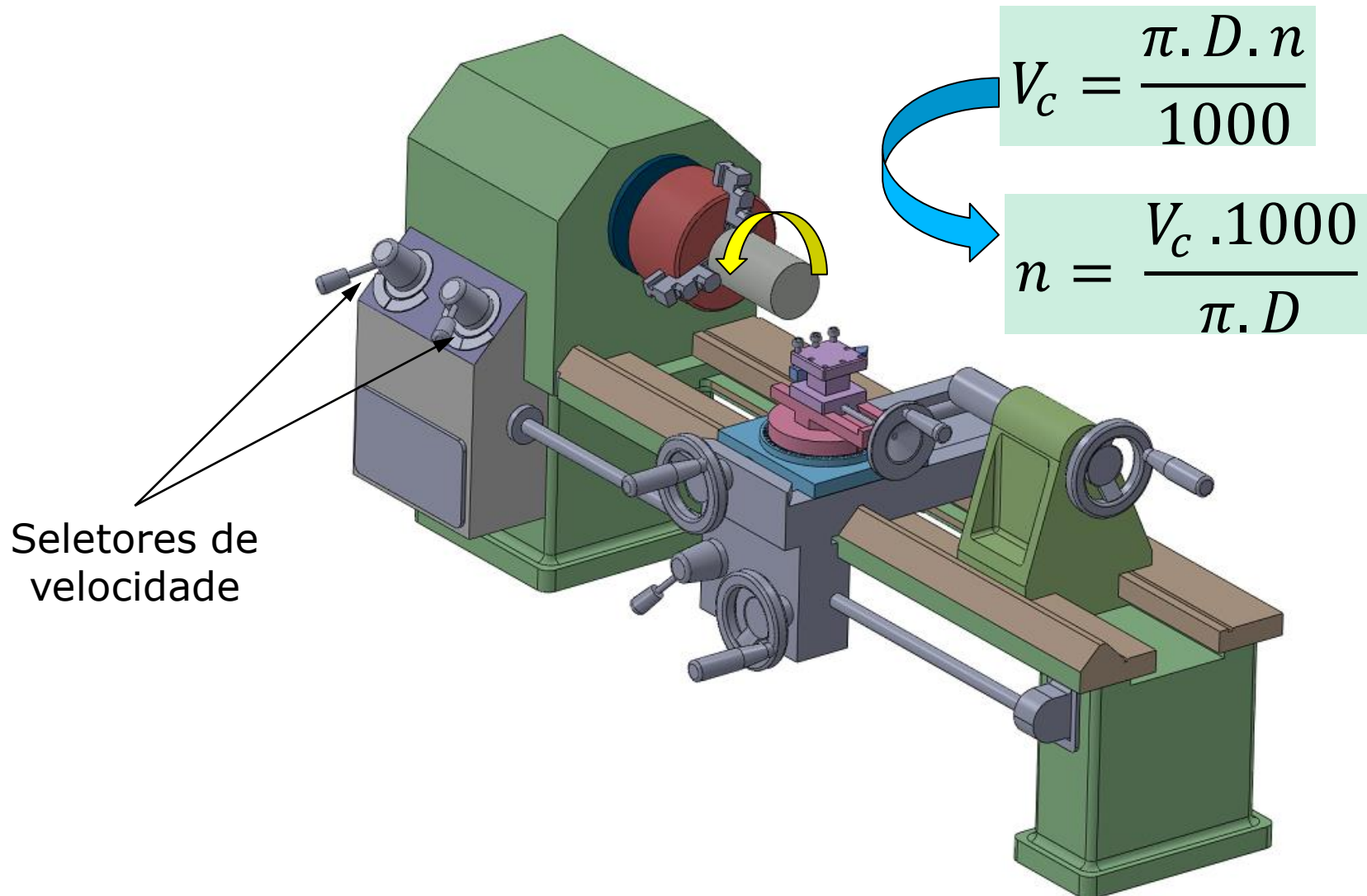


Dimensões da matéria prima



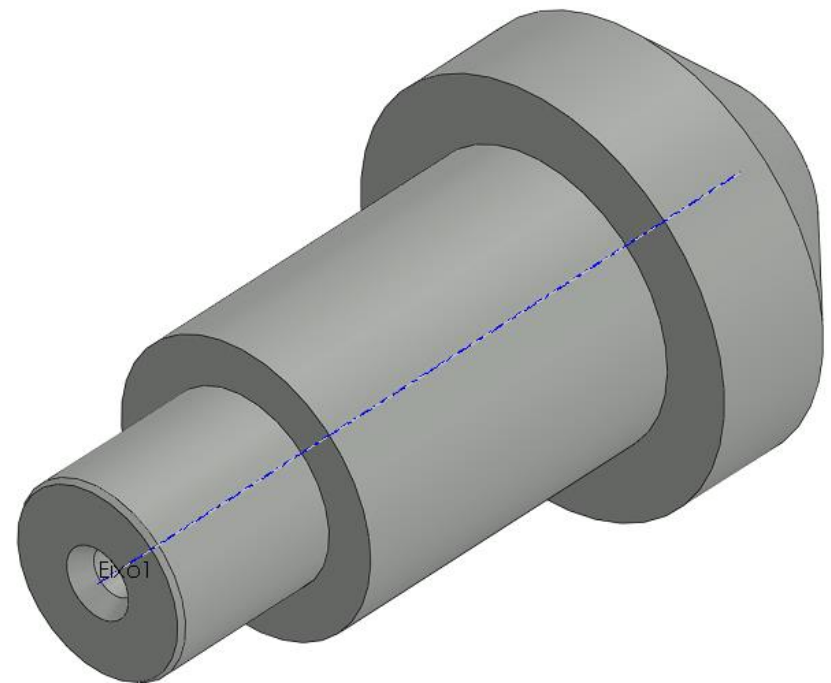
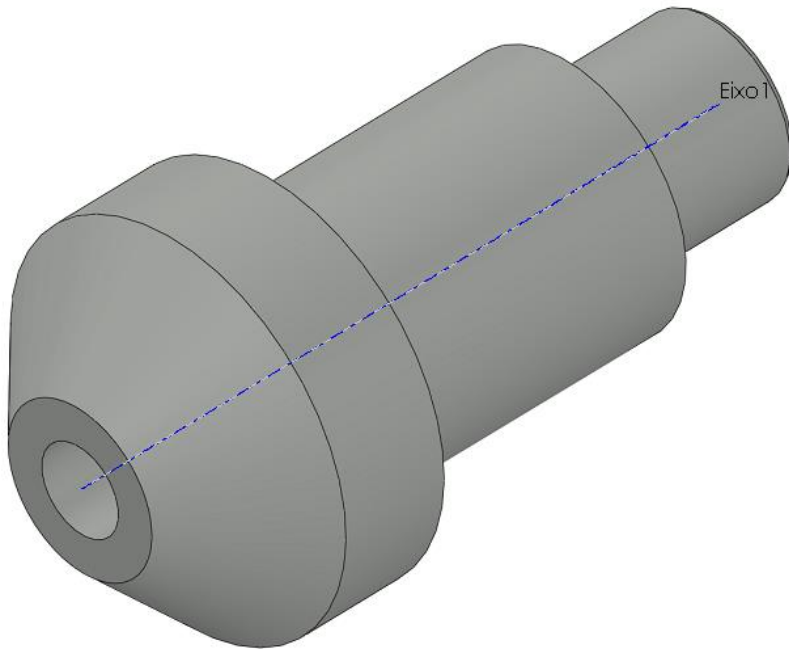


Ajuste da velocidade da árvore (rpm)





Peça pronta





Vídeos

https://www.youtube.com/watch?v=Vm5Chb_2JxA

<https://www.youtube.com/watch?v=wwYQdi68074>

<https://www.youtube.com/watch?v=oxBJ9fsLDbo>

<https://www.youtube.com/watch?v=tFwlpynHTZA>

<https://www.youtube.com/watch?v=s2EK5nRy3x4>



- Fim -